

Competitor Report

UCAS

Client Name: Rosehill College

Report Type: Competitor Report

Cycles Included: 2011 2012 2013 2014 2015

Competitor List: British Council, Bangladesh
Education Dept & Manpower Bureau, Hong Kong
Evesham Connexions
Careers Office, Ramsgate
Walsall Careers Service
Eastlea Community School, London E16
Whitton School, Twickenham
Christian Brothers School, Belfast
Brent Adult Guidance Service, London Nw10
Swedish Folk High School, Brighton
Taipei Kuei Shan School
Trafford College
Hmp East Sutton Park

Technical Notes and Definitions

Note: Age Groups

The definition used for applicant age has been updated to be in line with standard UCAS analytical reporting.

Note: Provider Tariff Group

This report classifies higher education providers by tariff group instead of Mission Group, in line with standard UCAS analytical reporting. The tariff grouping of providers is based on the average levels of attainment of their accepted applicants (summarised through UCAS Tariff points) in a period of application cycles spanning from 2004 to 2011. Each group of providers accounted for around a third of all UK 18 year old acceptances in these cycles, with the following categories: 'Higher tariff', 'Medium tariff', 'Lower tariff'.

Note: Applicants and Buzz Words

An applicant is only assigned to a school if they used that school's buzz word when making an application.

Note: Graph Clarity and Small Numbers

Graph lines are only plotted where the mean number of applicants or applications over 5 years is above 10 in order to maintain clarity. If no lines meet the criteria then no graph is plotted.

Note: Offers and Acceptances

The definition of an offer only applies to main scheme applications and to those applicants that made at least one main scheme application. Acceptances refers to applicants who at the end of the cycle are placed for entry into higher education, which may include those applying through non-main scheme routes (e.g. Clearing) that do not count towards the total number of offers made.

Note: Glossary

A glossary page is located at the end of the report.

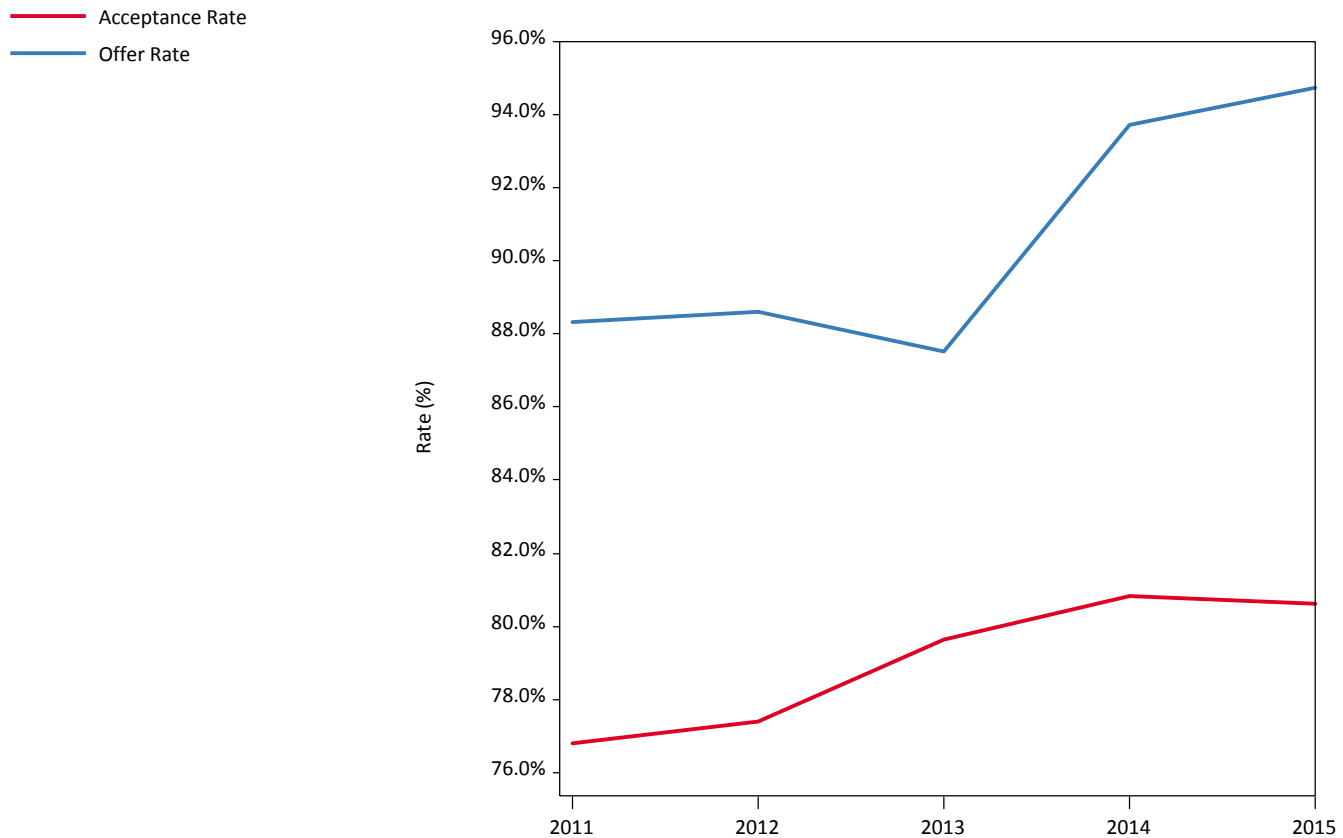
Note: Competitor Report

The Competitor Report contains aggregated data from a section of apply centres which is then rounded. To see your own data please use your copy of the Progression Report.

1. Summary

1.1 - Offer and Acceptance Rates Graph

Offer and acceptance rates of the applicants.



1.2 - Summary Statistics Data Table

Summary statistics of applicants, offers, and acceptances.

	2011	2012	2013	2014	2015
Applicants	2,285	1,990	2,185	2,635	2,400
Main Scheme Applicants	2,270	1,975	2,165	2,625	2,375
Applications Made	10,580	9,230	10,045	12,075	10,890
Applicants Offered	2,010	1,755	1,895	2,460	2,250
Total Offers	5,670	5,515	5,875	7,375	7,025
Acceptances	1,755	1,545	1,735	2,130	1,935

1.3 - Summary Statistics Rates Table

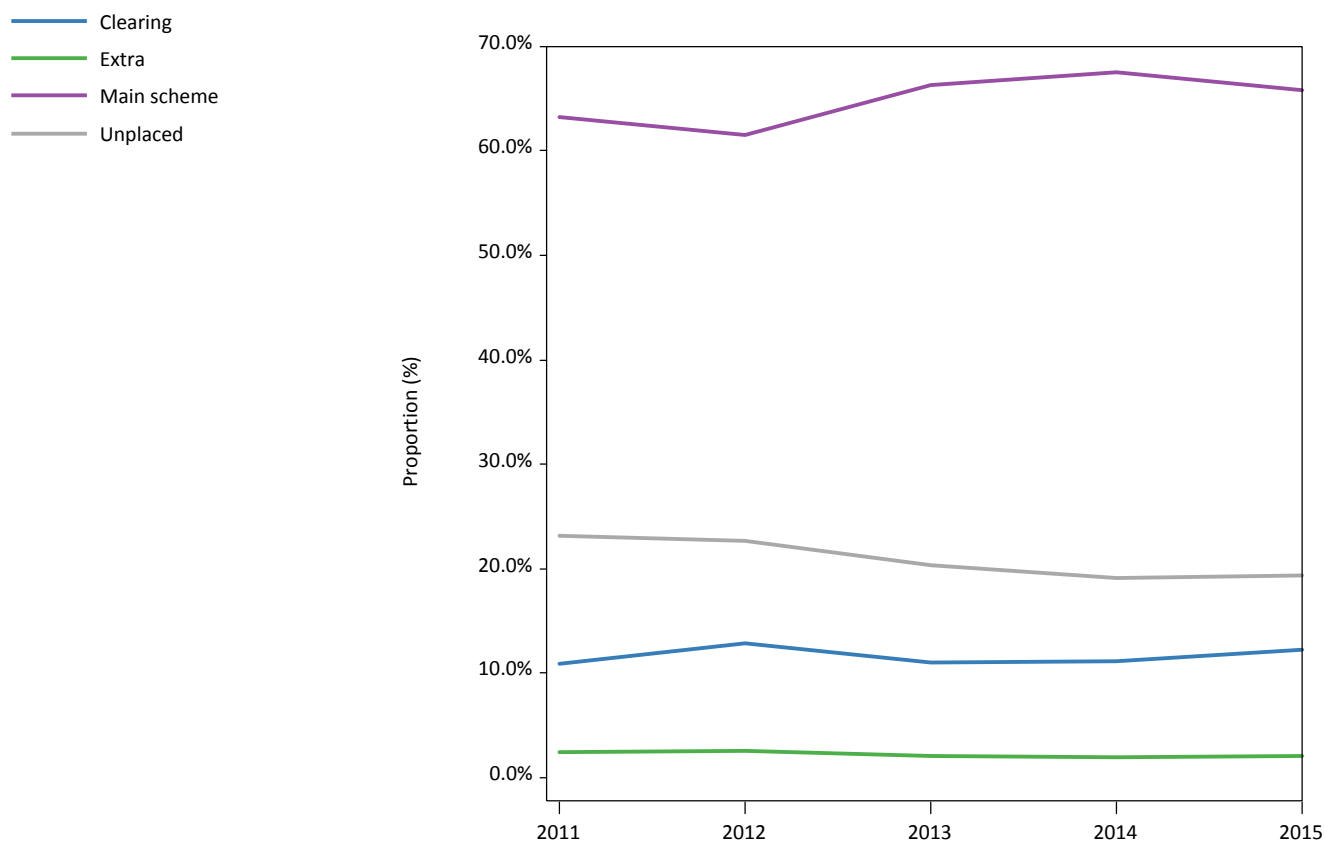
Offer and acceptance rates for the applicants.

	2011	2012	2013	2014	2015
Acceptance Rate	76.8%	77.4%	79.6%	80.8%	80.6%
Offer Rate	88.3%	88.6%	87.5%	93.7%	94.7%

2. Acceptance Route

2.1 - Acceptance Route Proportion Graph

The proportion of applicant acceptances by acceptance route.



2.2 - Acceptance Route Data Table

The numbers of applicant acceptances by acceptance route.

Route	2011	2012	2013	2014	2015
Adjustment	5	10	5	5	10
Clearing	250	255	240	295	295
Extra	55	50	45	50	50
Main scheme	1,445	1,225	1,450	1,780	1,580
RPA	0	0	0	0	0
Unplaced	530	450	445	505	465
Total	2,285	1,990	2,185	2,635	2,400

2.3 - Acceptance Route Proportion Table

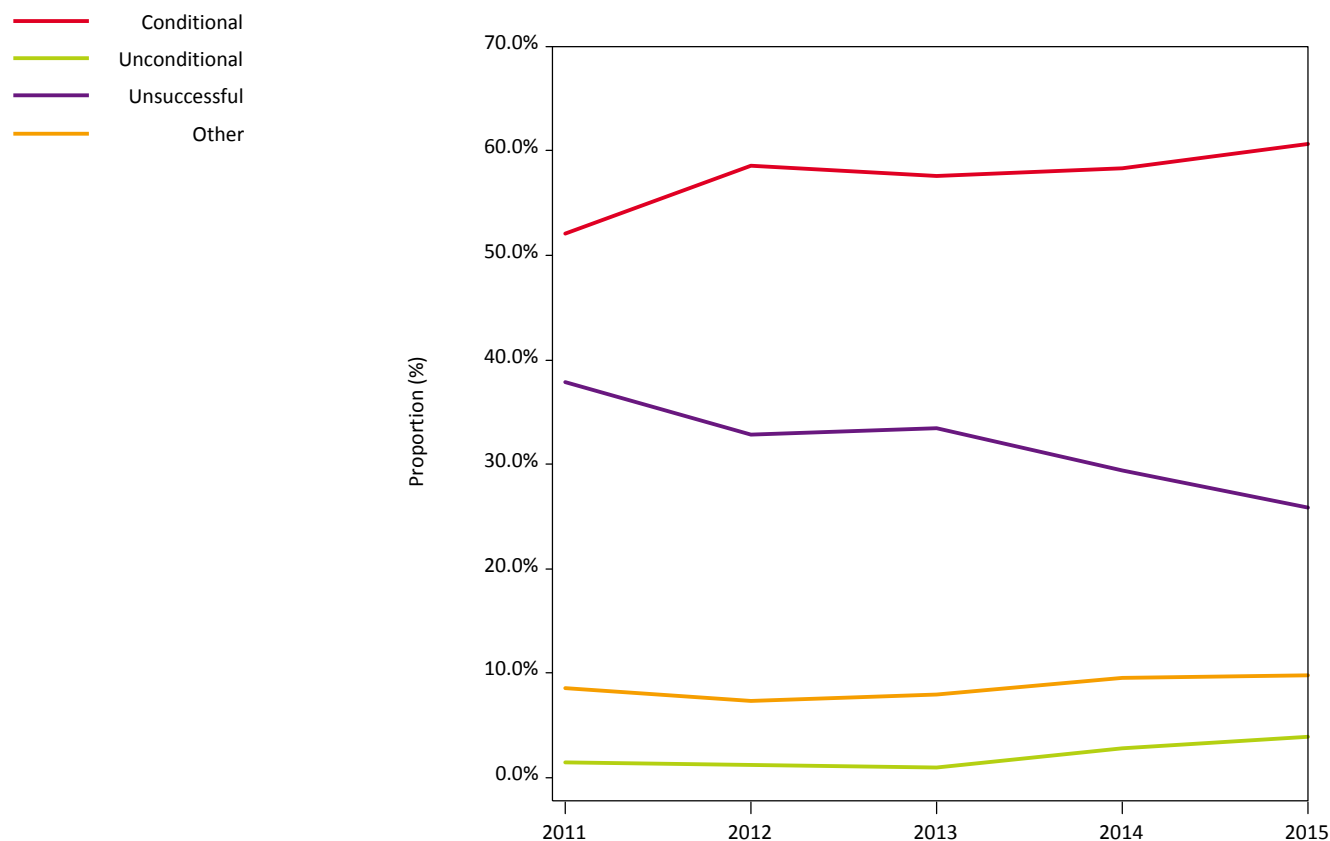
The proportion of applicant acceptances by acceptance route.

Route	2011	2012	2013	2014	2015
Adjustment	0.2%	0.5%	0.2%	0.2%	0.4%
Clearing	10.9%	12.8%	11.0%	11.2%	12.3%
Extra	2.4%	2.5%	2.1%	1.9%	2.1%
Main scheme	63.2%	61.6%	66.4%	67.6%	65.8%
RPA	0.0%	0.0%	0.0%	0.0%	0.0%
Unplaced	23.2%	22.6%	20.4%	19.2%	19.4%

3. Provider Decisions

3.1 - Provider Decisions Proportions Graph

The provider decisions proportions by decision status for main scheme applications.



3.2 - Provider Decisions Data Table

The numbers of provider decisions by decision status for main scheme applications.

Decision	2011	2012	2013	2014	2015
Conditional	5,515	5,405	5,780	7,040	6,605
Unconditional	155	110	95	335	420
Unsuccessful	4,005	3,035	3,365	3,545	2,810
Other	905	680	800	1,155	1,060
Total	10,580	9,230	10,045	12,075	10,890

3.3 - Provider Decisions Proportions Table

The provider decisions proportions by decision status for main scheme applications.

Decision	2011	2012	2013	2014	2015
Conditional	52.1%	58.6%	57.5%	58.3%	60.7%
Unconditional	1.5%	1.2%	0.9%	2.8%	3.9%
Unsuccessful	37.9%	32.9%	33.5%	29.4%	25.8%
Other	8.6%	7.4%	8.0%	9.6%	9.7%

4. Applicant Replies

4.1 - Applicant Reply Proportion Graph

The applicant reply proportions by reply status for main scheme applications.



4.2 - Applicant Reply Data Table

The numbers of applicant replies by reply status for main scheme applications.

Applicant Reply	2011	2012	2013	2014	2015
Firm Reply	1,855	1,610	1,745	2,160	1,985
Insurance Reply	1,385	1,310	1,370	1,645	1,505
Decline	2,395	2,580	2,720	3,510	3,505
Other	4,945	3,725	4,205	4,760	3,895
Total	10,580	9,230	10,045	12,075	10,890

4.3 - Applicant Reply Proportion Table

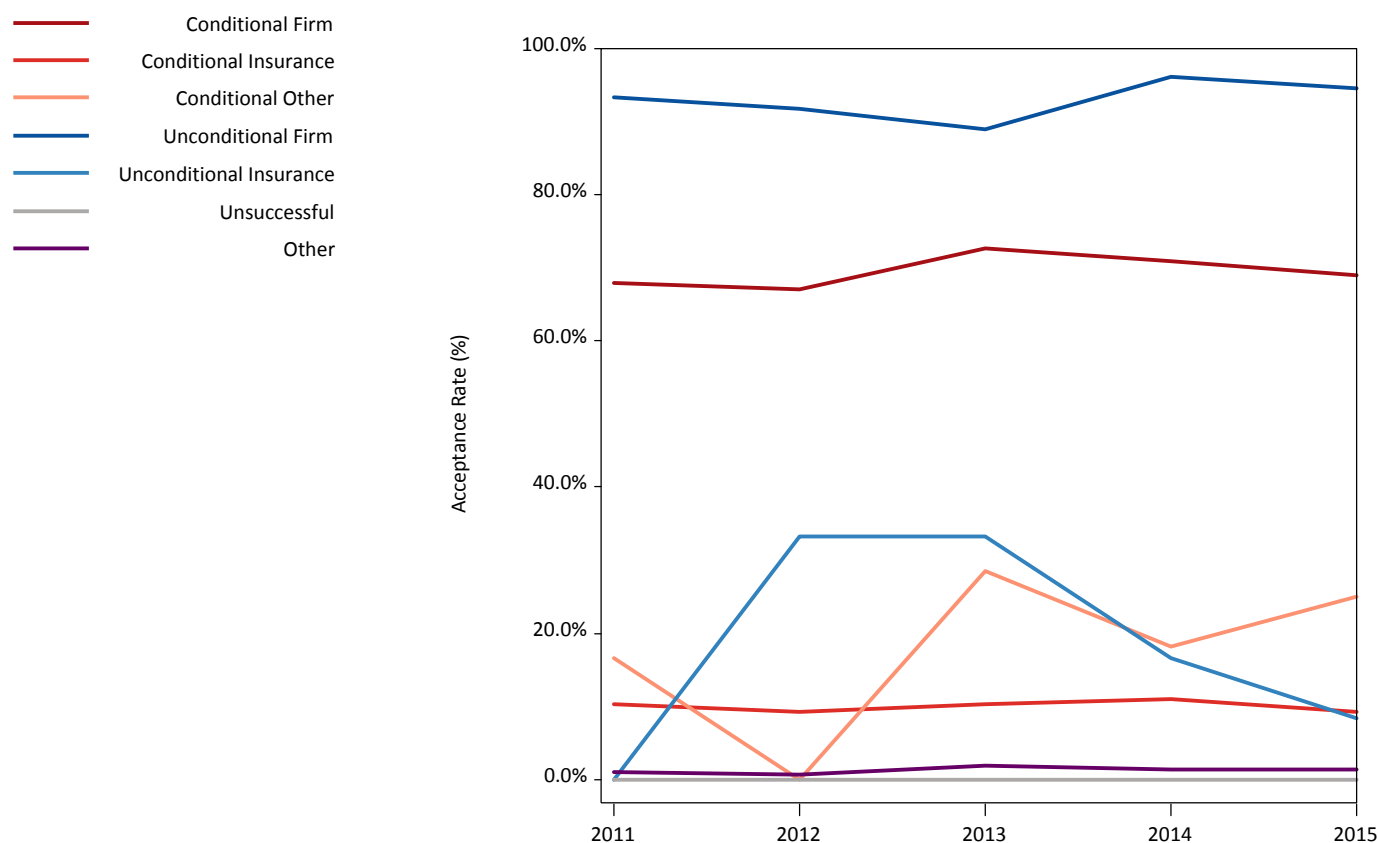
The applicant reply proportions by reply status for main scheme applications.

Applicant Reply	2011	2012	2013	2014	2015
Firm Reply	17.5%	17.4%	17.4%	17.9%	18.2%
Insurance Reply	13.1%	14.2%	13.6%	13.6%	13.8%
Decline	22.6%	28.0%	27.1%	29.1%	32.2%
Other	46.7%	40.4%	41.9%	39.4%	35.8%

5. Decisions and Replies

5.1 - Decisions and Replies Graph

The acceptance rates by decision and reply status for main scheme applications.



5.2 - Decisions and Replies Acceptance Rates Table

The acceptance rates by decision and reply status for main scheme applications.

Decision and Response	2011	2012	2013	2014	2015
Conditional Firm	68.0%	67.1%	72.6%	70.9%	69.0%
Conditional Insurance	10.3%	9.3%	10.3%	11.0%	9.3%
Conditional Other	16.7%	0.0%	28.6%	18.2%	25.0%
Unconditional Firm	93.3%	91.7%	88.9%	96.2%	94.6%
Unconditional Insurance	0.0%	33.3%	33.3%	16.7%	8.3%
Unconditional Other	0.0%	0.0%	0.0%	0.0%	0.0%
Unsuccessful	0.0%	0.0%	0.0%	0.0%	0.0%
Other	1.1%	0.7%	1.9%	1.3%	1.4%

5.3 - Decisions and Replies Data Table

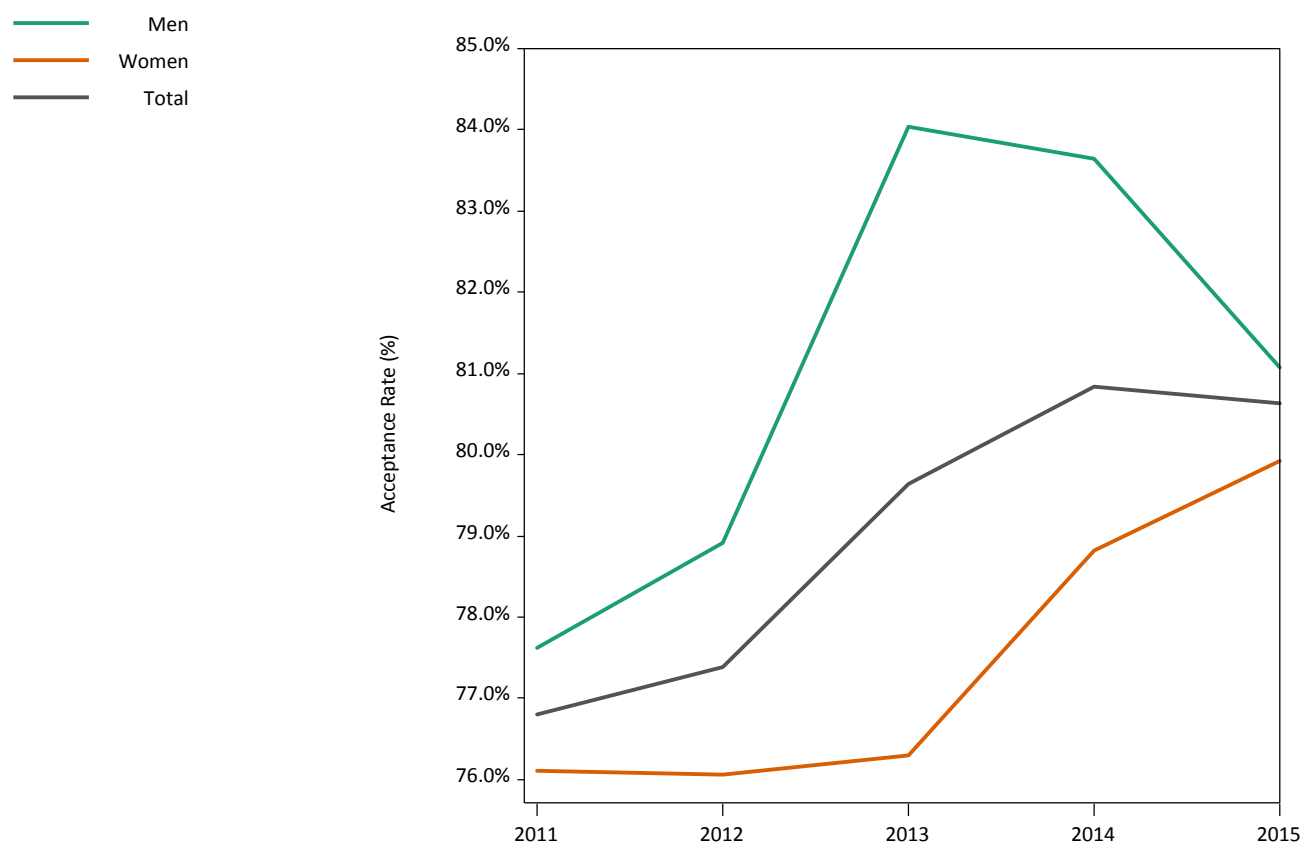
The numbers of applications and acceptances by decision and reply for main scheme applications.

Decision and Reply		2011	2012	2013	2014	2015
Conditional Firm	Applications	1,780	1,550	1,700	2,030	1,805
	Applications Accepted	1,215	1,040	1,235	1,440	1,245
Conditional Insurance	Applications	1,365	1,295	1,355	1,585	1,445
	Applications Accepted	140	120	140	175	135
Conditional Decline	Applications	2,335	2,545	2,690	3,375	3,335
	Applications Accepted	0	0	0	0	0
Conditional Other	Applications	30	15	35	55	20
	Applications Accepted	5	0	10	10	5
Unconditional Firm	Applications	75	60	45	130	185
	Applications Accepted	70	55	45	125	175
Unconditional Insurance	Applications	20	15	15	60	60
	Applications Accepted	0	5	5	10	5
Unconditional Decline	Applications	60	35	35	135	170
	Applications Accepted	0	0	0	0	0
Unconditional Other	Applications	5	0	0	5	5
	Applications Accepted	0	0	0	0	0
Unsuccessful	Applications	4,005	3,035	3,365	3,545	2,810
	Applications Accepted	0	0	0	0	0
Other	Applications	905	680	800	1,155	1,060
	Applications Accepted	10	5	15	15	15

6. Sex - Acceptances

6.1 - Acceptance Rates by Sex Graph

The acceptance rates by sex.



6.2 - Acceptances by sex Data Table

The numbers of applicants and acceptances by sex.

Sex		2011	2012	2013	2014	2015
Men	Applicants	1,050	925	940	1,100	1,030
	Applicants Accepted	810	735	790	920	840
Women	Applicants	1,235	1,065	1,245	1,535	1,370
	Applicants Accepted	940	810	950	1,205	1,095
Total	Applicants	2,285	1,990	2,185	2,635	2,400
	Applicants Accepted	1,755	1,545	1,735	2,130	1,935

6.3 - Acceptance Rates by Sex Table

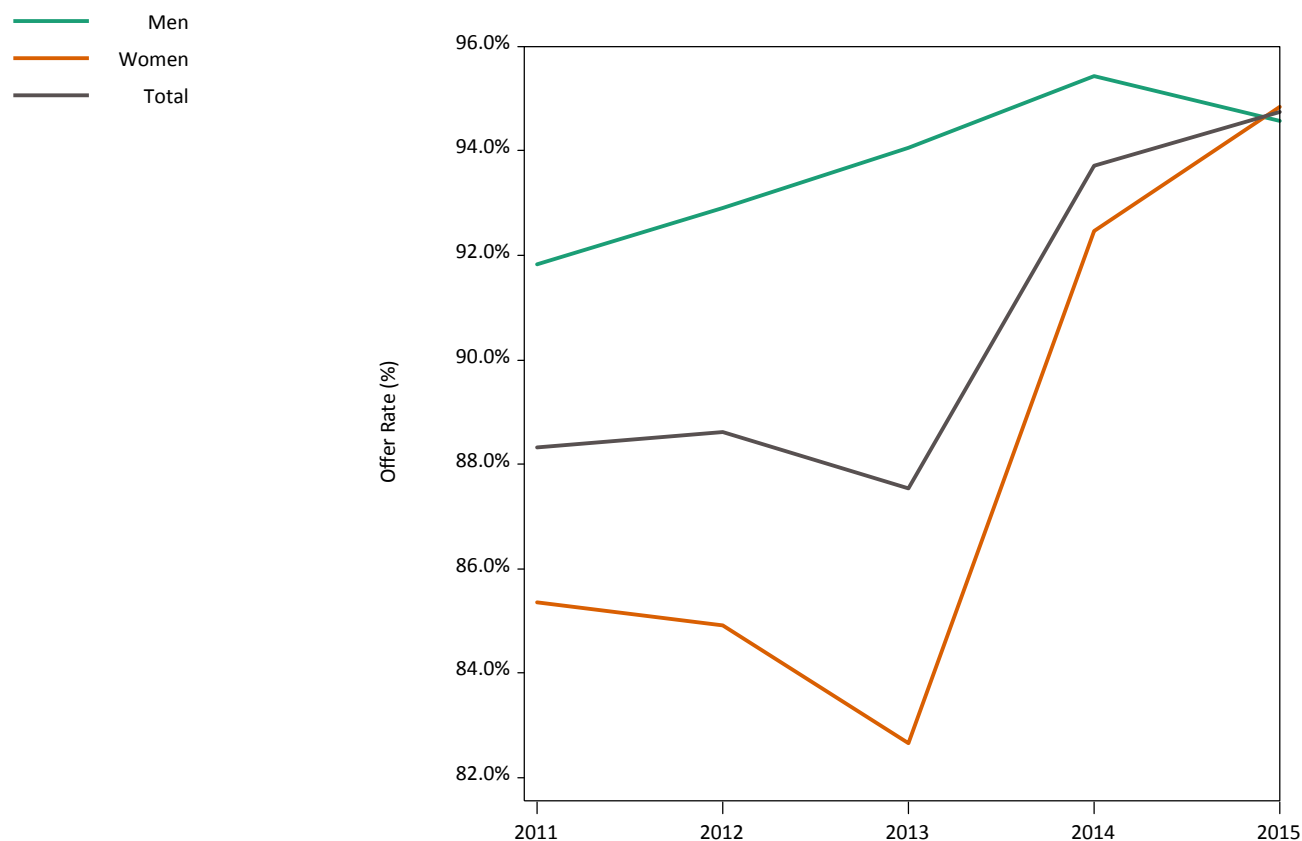
The acceptance rates by sex.

Sex	2011	2012	2013	2014	2015
Men	77.6%	78.9%	84.0%	83.6%	81.1%
Women	76.1%	76.1%	76.3%	78.8%	79.9%
Total	76.8%	77.4%	79.6%	80.8%	80.6%

7. Sex - Offers

7.1 - Offer Rates (Applicant Level) by Sex Graph

The offer rates (applicant level) by sex.



7.2 - Offers by Sex Data Table

The numbers of applicants and offers by sex.

Sex		2011	2012	2013	2014	2015
Men	Applicants	1,040	915	925	1,095	1,015
	Applicants Offered	955	850	875	1,045	965
Women	Applicants	1,230	1,060	1,240	1,525	1,360
	Applicants Offered	1,050	900	1,025	1,415	1,290
Total	Applicants	2,270	1,975	2,165	2,625	2,375
	Applicants Offered	2,010	1,755	1,895	2,460	2,250

7.3 - Offer Rates (Applicant Level) by Sex Table

The offer rates (applicant level) by sex.

Sex	2011	2012	2013	2014	2015
Men	91.8%	92.9%	94.1%	95.4%	94.6%
Women	85.4%	84.9%	82.7%	92.5%	94.9%
Total	88.3%	88.6%	87.5%	93.7%	94.7%

8. Age Group - Acceptances

8.1 - Acceptance Rates by Age Group Graph

The acceptance rates by age group.



8.2 - Acceptances by Age Group Data Table

The numbers of applicants and acceptances by age group.

Age Group		2011	2012	2013	2014	2015
17 and under	Applicants	0	0	5	0	0
	Applicants Accepted	0	0	0	0	0
18	Applicants	690	575	595	845	805
	Applicants Accepted	535	445	490	710	660
19	Applicants	665	585	585	715	695
	Applicants Accepted	545	490	510	610	625
20	Applicants	275	260	330	325	320
	Applicants Accepted	195	205	265	265	245
21 and over	Applicants	655	570	670	750	580
	Applicants Accepted	480	400	470	540	410
All	Applicants	2,285	1,990	2,185	2,635	2,400
	Applicants Accepted	1,755	1,545	1,735	2,130	1,935

8.3 - Acceptance Rates by Age Group Table

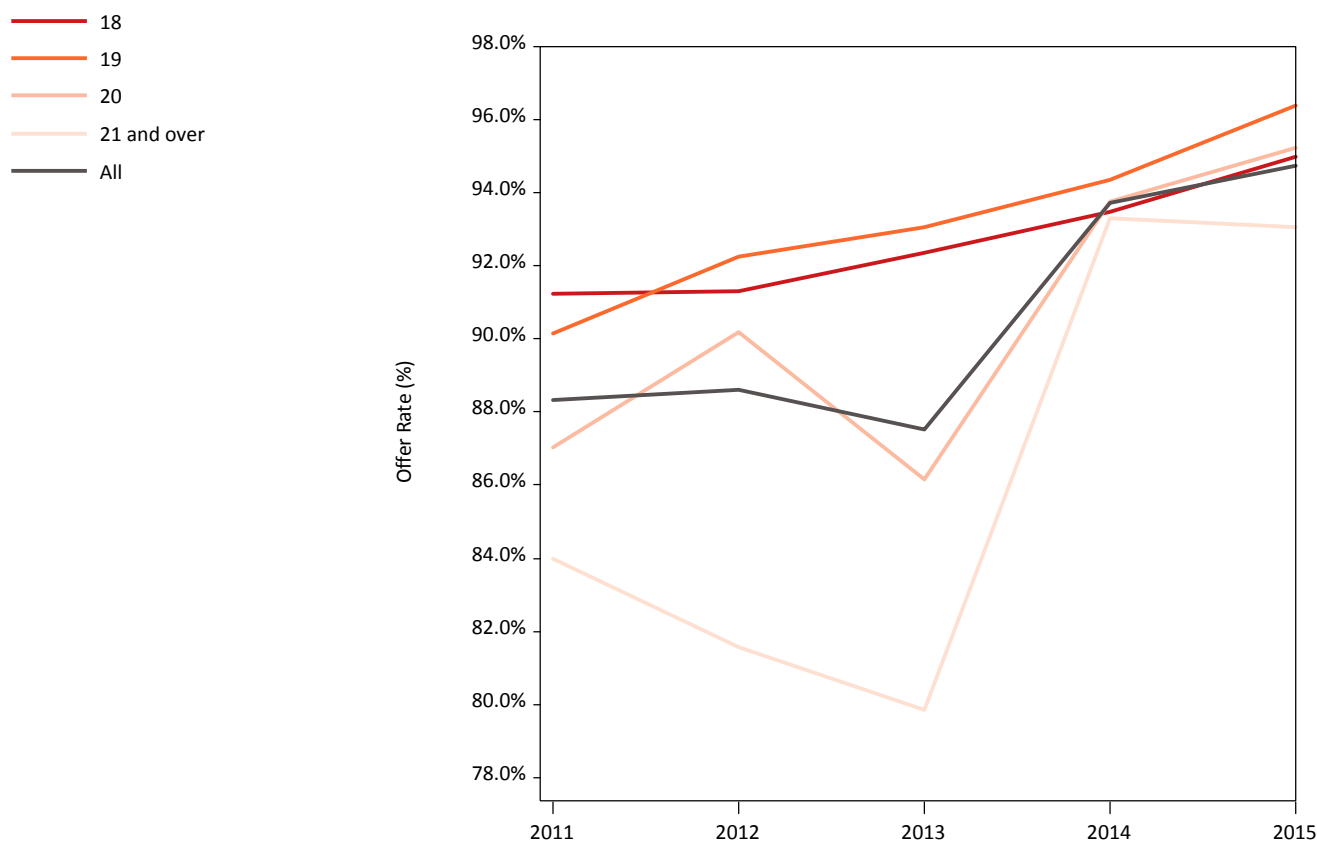
The acceptance rates by age group.

Age Group	2011	2012	2013	2014	2015
17 and under	0.0%	0.0%	100.0%	0.0%	0.0%
18	78.3%	77.4%	82.4%	84.0%	81.4%
19	82.0%	83.8%	87.2%	85.3%	89.9%
20	70.9%	78.8%	80.3%	83.1%	78.1%
21 and over	73.3%	70.2%	70.1%	72.0%	69.8%
All	76.8%	77.4%	79.6%	80.8%	80.6%

9. Age Group - Offers

9.1 - Offer Rates (Applicant Level) by Age Group Graph

The offer rates (applicant level) by age group.



9.2 - Offers by Age Group Data Table

The numbers of applicants and offers by age group.

Age Group		2011	2012	2013	2014	2015
17 and under	Applicants	0	0	5	0	0
	Applicants Offered	0	0	5	0	0
18	Applicants	685	575	590	845	800
	Applicants Offered	625	525	545	790	755
19	Applicants	660	580	575	710	690
	Applicants Offered	595	535	535	675	665
20	Applicants	270	255	325	320	315
	Applicants Offered	235	230	280	300	295
21 and over	Applicants	655	570	670	745	575
	Applicants Offered	550	465	530	695	535
All	Applicants	2,270	1,975	2,165	2,625	2,375
	Applicants Offered	2,010	1,755	1,895	2,460	2,250

9.3 - Offer Rates (Applicant Level) by Age Group Table

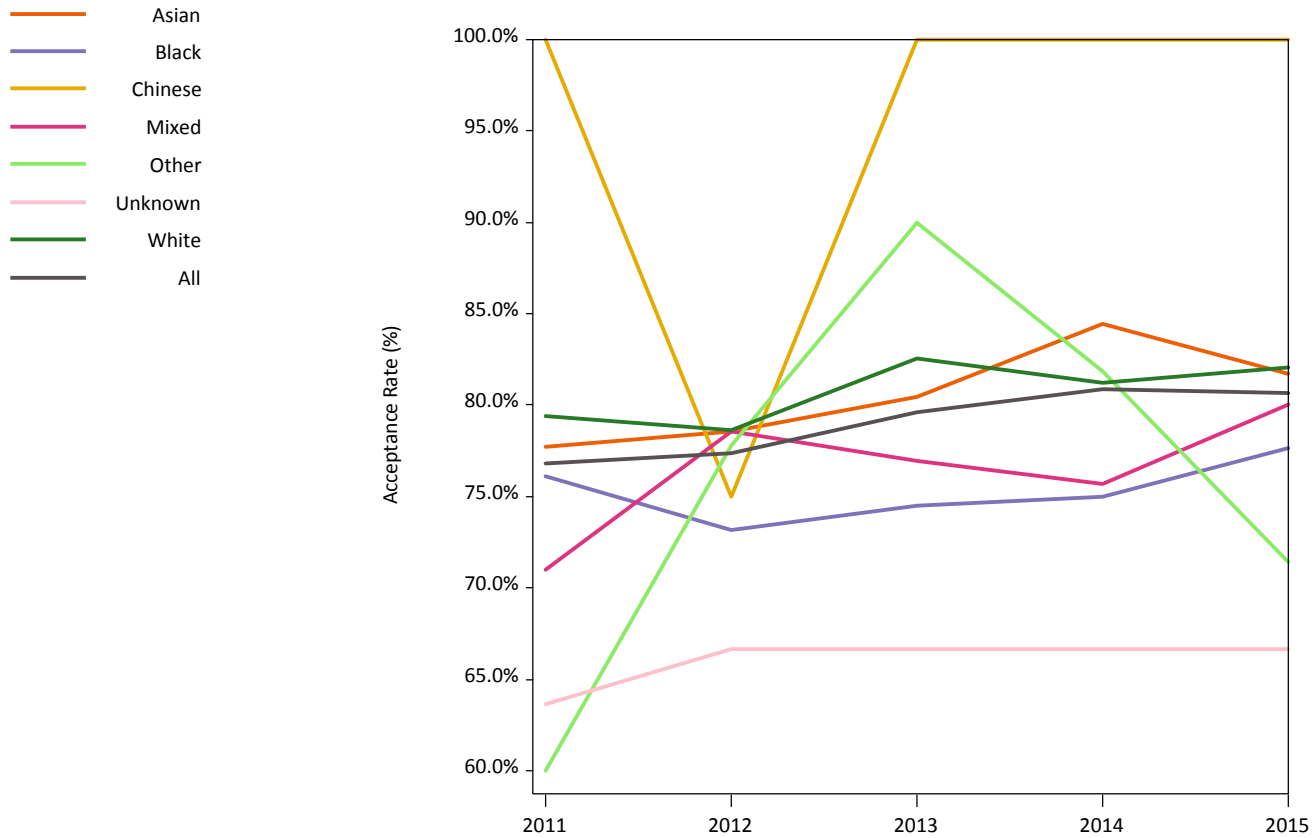
The offer rates (applicant level) by age group.

Age Group	2011	2012	2013	2014	2015
17 and under	0.0%	0.0%	100.0%	0.0%	0.0%
18	91.2%	91.3%	92.4%	93.5%	95.0%
19	90.2%	92.2%	93.0%	94.4%	96.4%
20	87.0%	90.2%	86.2%	93.8%	95.2%
21 and over	84.0%	81.6%	79.9%	93.3%	93.0%
All	88.3%	88.6%	87.5%	93.7%	94.7%

10. Ethnic Group - Acceptances

10.1 - Acceptance Rates by Ethnic Group Graph

The acceptance rates by ethnic group.



10.2 - Acceptance Rates by Ethnic Group Table

The acceptance rates by ethnic group.

Ethnic	2011	2012	2013	2014	2015
Asian	77.7%	78.6%	80.4%	84.5%	81.7%
Black	76.1%	73.2%	74.5%	75.0%	77.6%
Chinese	100.0%	75.0%	100.0%	100.0%	100.0%
Mixed	71.0%	78.6%	76.9%	75.7%	80.0%
Other	60.0%	77.8%	90.0%	81.8%	71.4%
Unknown	63.6%	66.7%	66.7%	66.7%	66.7%
White	79.4%	78.6%	82.6%	81.2%	82.0%
All	76.8%	77.4%	79.6%	80.8%	80.6%

10.3 - Acceptances by Ethnic Group Data Table

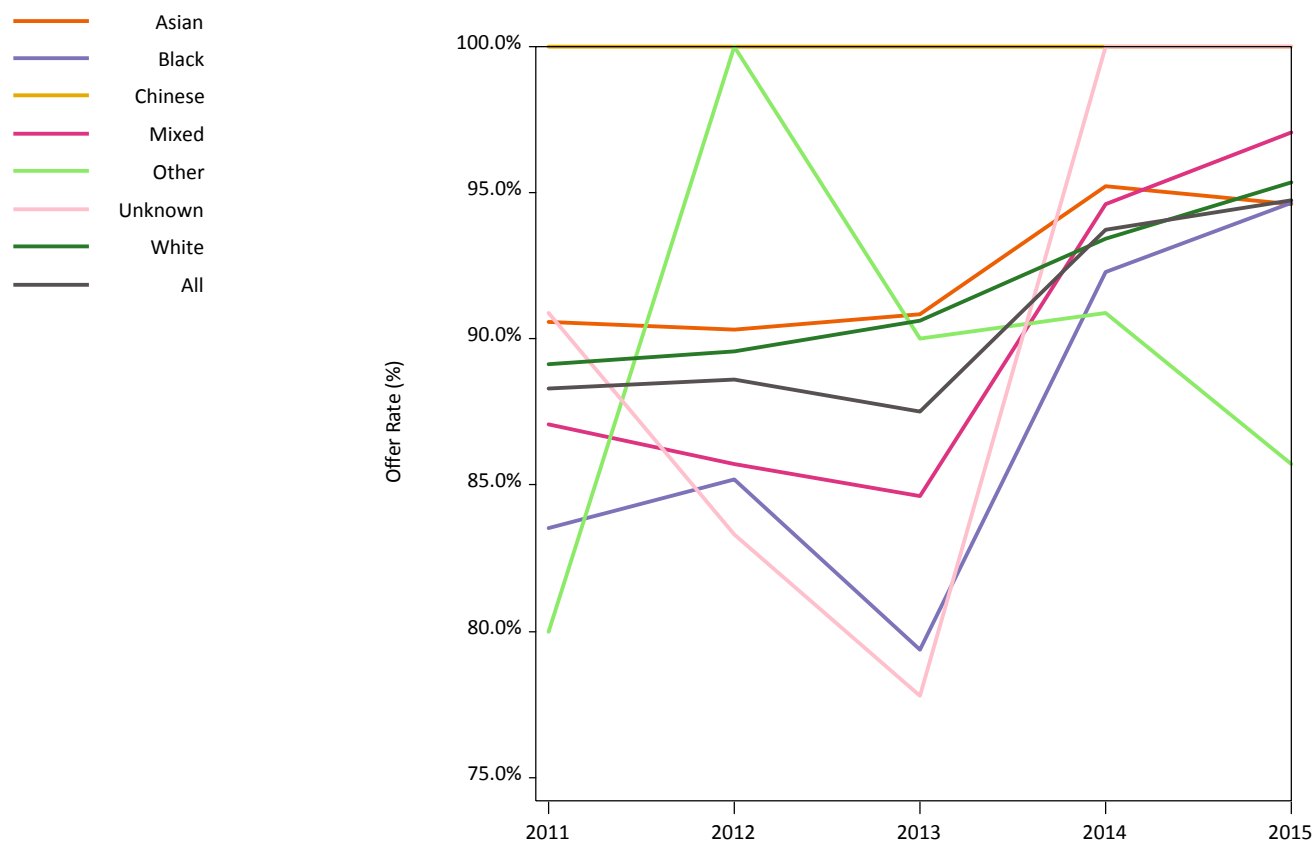
The numbers of applicants and acceptances by ethnic group.

Ethnic		2011	2012	2013	2014	2015
Asian	Applicants	695	630	715	740	655
	Applicants Accepted	540	495	575	630	530
Black	Applicants	460	410	490	460	380
	Applicants Accepted	345	300	365	345	300
Chinese	Applicants	15	20	5	20	10
	Applicants Accepted	10	15	5	20	10
Mixed	Applicants	155	140	130	185	175
	Applicants Accepted	110	110	95	140	140
Other	Applicants	25	45	50	55	70
	Applicants Accepted	15	35	45	50	50
Unknown	Applicants	55	30	45	30	30
	Applicants Accepted	35	20	30	20	15
White	Applicants	875	725	745	1,145	1,085
	Applicants Accepted	695	565	615	930	890
All	Applicants	2,285	1,990	2,185	2,635	2,400
	Applicants Accepted	1,755	1,545	1,735	2,130	1,935

11. Ethnic Group - Offers

11.1 - Offer Rates (Applicant Level) by Ethnic Group Graph

The offer rates (applicant level) by ethnic group.



11.2 - Offer Rates (Applicant Level) by Ethnic Group Table

The offer rates (applicant level) by ethnic group.

Ethnic	2011	2012	2013	2014	2015
Asian	90.6%	90.3%	90.8%	95.2%	94.6%
Black	83.5%	85.2%	79.4%	92.3%	94.7%
Chinese	100.0%	100.0%	100.0%	100.0%	100.0%
Mixed	87.1%	85.7%	84.6%	94.6%	97.1%
Other	80.0%	100.0%	90.0%	90.9%	85.7%
Unknown	90.9%	83.3%	77.8%	100.0%	100.0%
White	89.1%	89.6%	90.6%	93.4%	95.3%
All	88.3%	88.6%	87.5%	93.7%	94.7%

11.3 - Offers by Ethnic Group Data Table

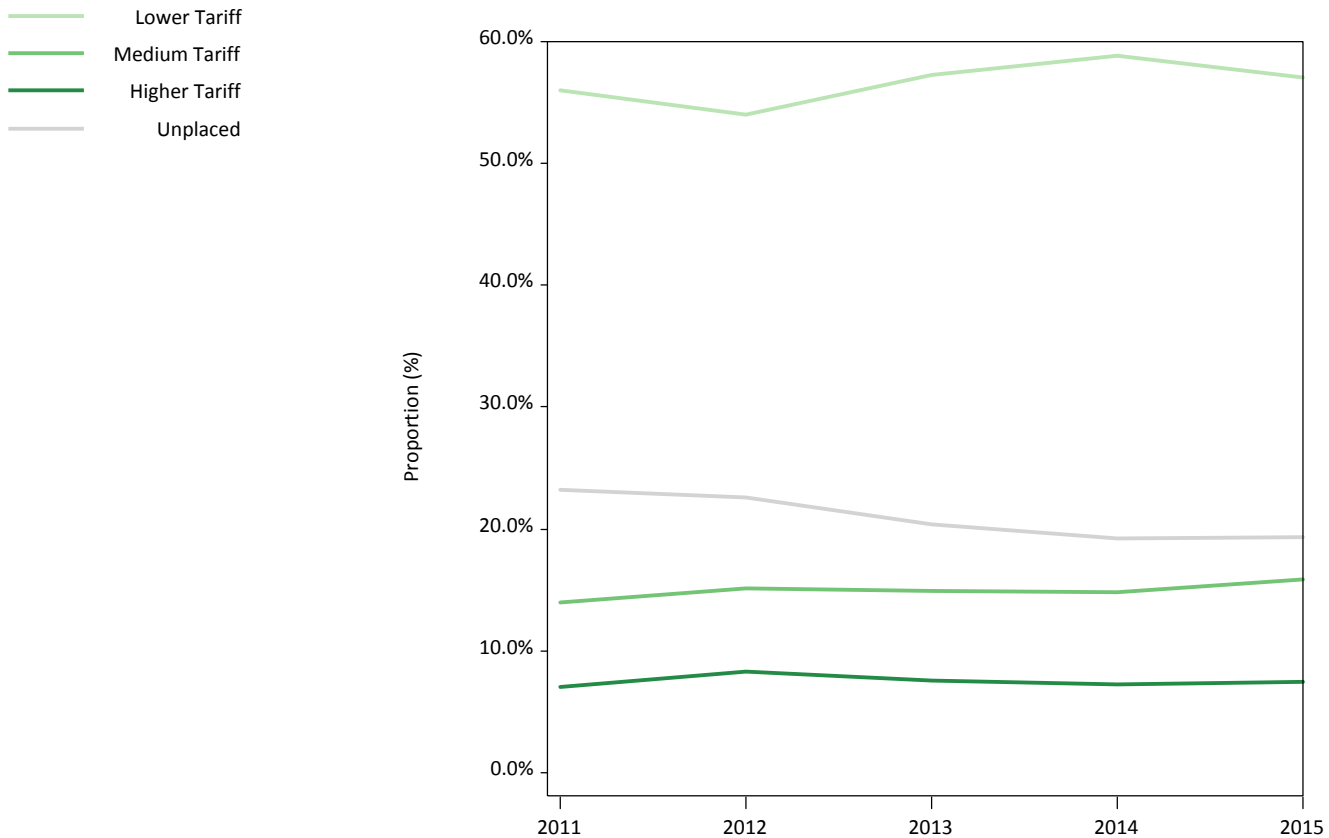
The numbers of applicants and offers by ethnic group

Ethnic		2011	2012	2013	2014	2015
Asian	Applicants	690	620	710	735	650
	Applicants Offered	625	560	645	700	610
Black	Applicants	455	405	485	455	375
	Applicants Offered	380	345	385	420	355
Chinese	Applicants	15	20	5	20	10
	Applicants Offered	15	15	5	15	10
Mixed	Applicants	155	140	130	185	170
	Applicants Offered	135	120	105	175	165
Other	Applicants	25	45	50	55	70
	Applicants Offered	20	40	45	50	60
Unknown	Applicants	55	30	45	30	30
	Applicants Offered	50	25	40	30	25
White	Applicants	875	720	745	1,140	1,075
	Applicants Offered	780	645	675	1,065	1,025
All	Applicants	2,270	1,975	2,165	2,625	2,375
	Applicants Offered	2,010	1,755	1,895	2,460	2,250

12. Provider Tariff Group - Acceptances

12.1 - Applicant Placement Proportions by Provider Group Graph

The applicant placements proportions by the tariff group of the accepting provider.



12.2 - Provider Tariff Group Data Table

The number of acceptances by the tariff group of the accepting provider.

Tariff Group	2011	2012	2013	2014	2015
Lower Tariff	1,275	1,075	1,250	1,550	1,370
Medium Tariff	320	300	325	390	380
Higher Tariff	160	165	165	190	180
Unplaced	530	450	445	505	465
Total	2,285	1,990	2,185	2,635	2,400

12.3 - Applicant Placement Proportions by Provider Group Table

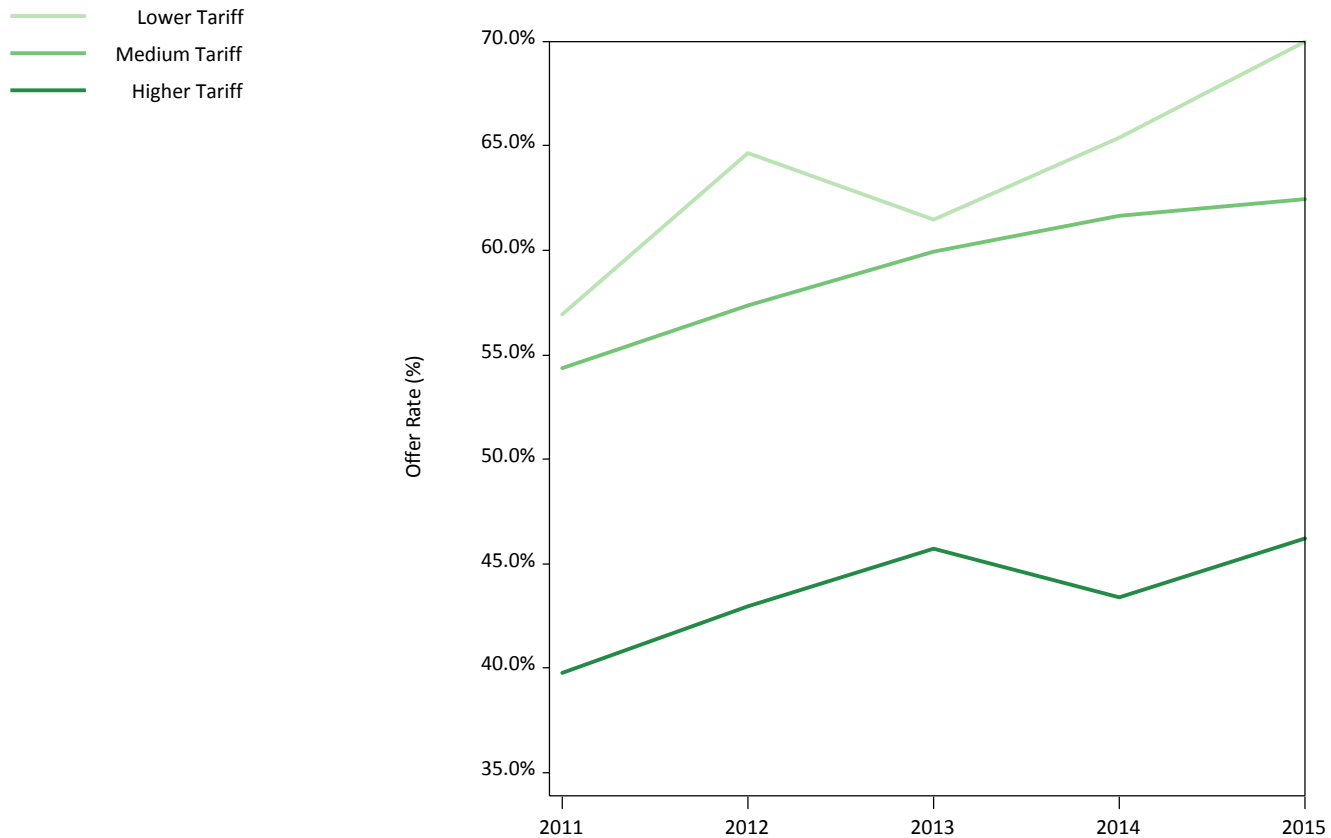
The applicant placements proportions by the tariff group of the accepting provider.

Tariff Group	2011	2012	2013	2014	2015
Lower Tariff	56.0%	54.0%	57.2%	58.8%	57.1%
Medium Tariff	14.0%	15.1%	14.9%	14.8%	15.8%
Higher Tariff	7.0%	8.3%	7.6%	7.2%	7.5%
Unplaced	23.2%	22.6%	20.4%	19.2%	19.4%

13. Provider Tariff Group - Offers

13.1 - Offer Rates (Application Level) by Provider Tariff Group Graph

The applicant offer rates (application level) by the tariff group of the provider applied to.



13.2 - Provider Tariff Group Data Table

The numbers of offers by the tariff group of the provider applied to.

Tariff Group		2011	2012	2013	2014	2015
Lower Tariff	Applications to	6,580	5,805	6,330	7,610	6,665
	Received Offers	3,745	3,755	3,890	4,975	4,665
Medium Tariff	Applications to	2,290	1,970	2,010	2,530	2,515
	Received Offers	1,245	1,130	1,205	1,560	1,570
Higher Tariff	Applications to	1,710	1,455	1,705	1,935	1,710
	Received Offers	680	625	785	840	790

13.3 - Offer Rates (Application Level) by Provider Tariff Group Table

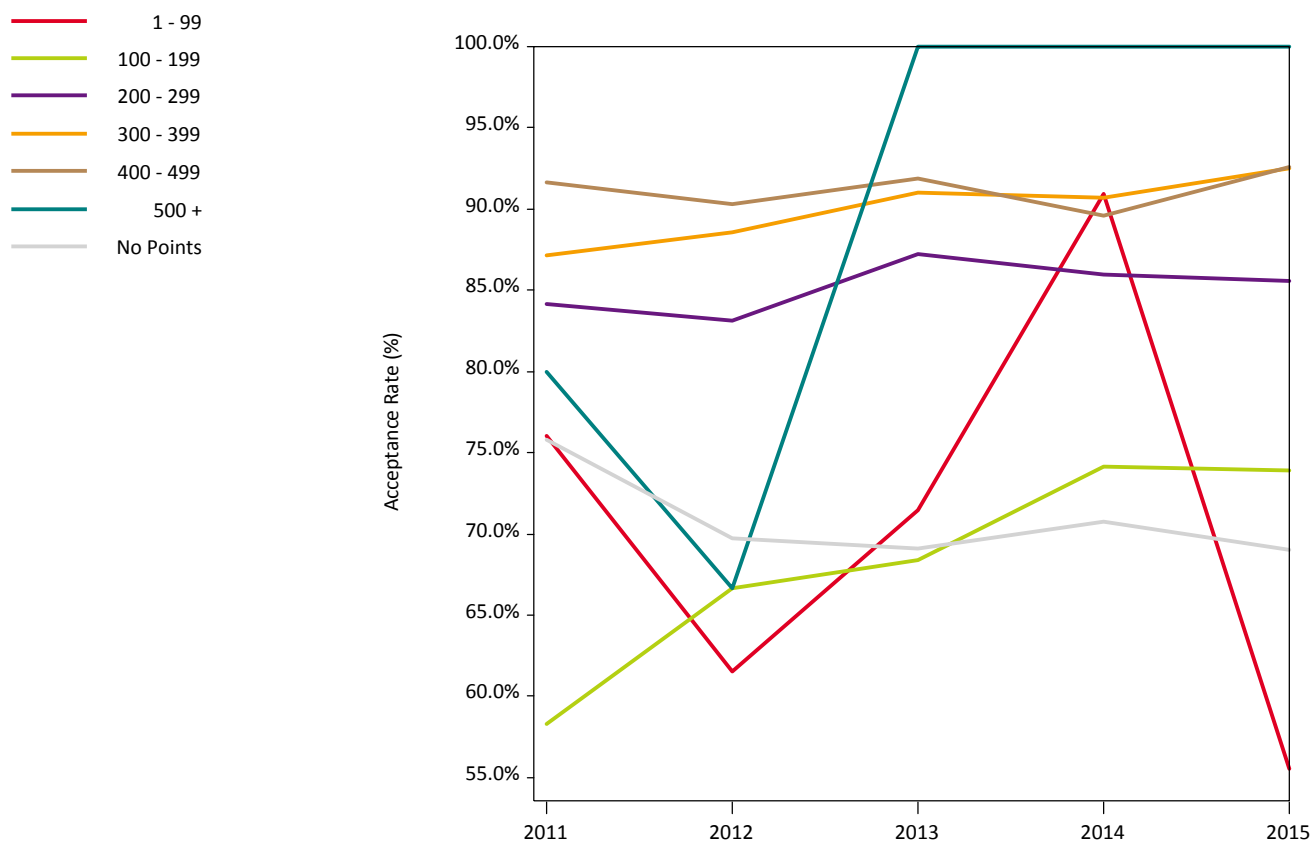
The offer rates (application level) by the tariff group of the provider applied to.

Tariff Group	2011	2012	2013	2014	2015
Lower Tariff	56.9%	64.7%	61.5%	65.4%	70.0%
Medium Tariff	54.4%	57.4%	60.0%	61.7%	62.4%
Higher Tariff	39.8%	43.0%	45.7%	43.4%	46.2%

14. Applicant Tariff Band - Acceptances

14.1 - Applicant Tariff Band Acceptance Rates Graph

The acceptance rates by applicant tariff band.



14.2 - Applicant Tariff Band Acceptance Rates Table

The acceptance rates by applicant tariff band.

Tariff Band	2011	2012	2013	2014	2015
1 - 99	76.0%	61.5%	71.4%	90.9%	55.6%
100 - 199	58.3%	66.7%	68.4%	74.1%	73.9%
200 - 299	84.1%	83.2%	87.3%	85.9%	85.6%
300 - 399	87.2%	88.6%	91.0%	90.7%	92.5%
400 - 499	91.7%	90.3%	91.9%	89.6%	92.6%
500 +	80.0%	66.7%	100.0%	100.0%	100.0%
No Points	75.8%	69.7%	69.1%	70.7%	69.0%

14.3 - Applicant Tariff Band Acceptances Data Table

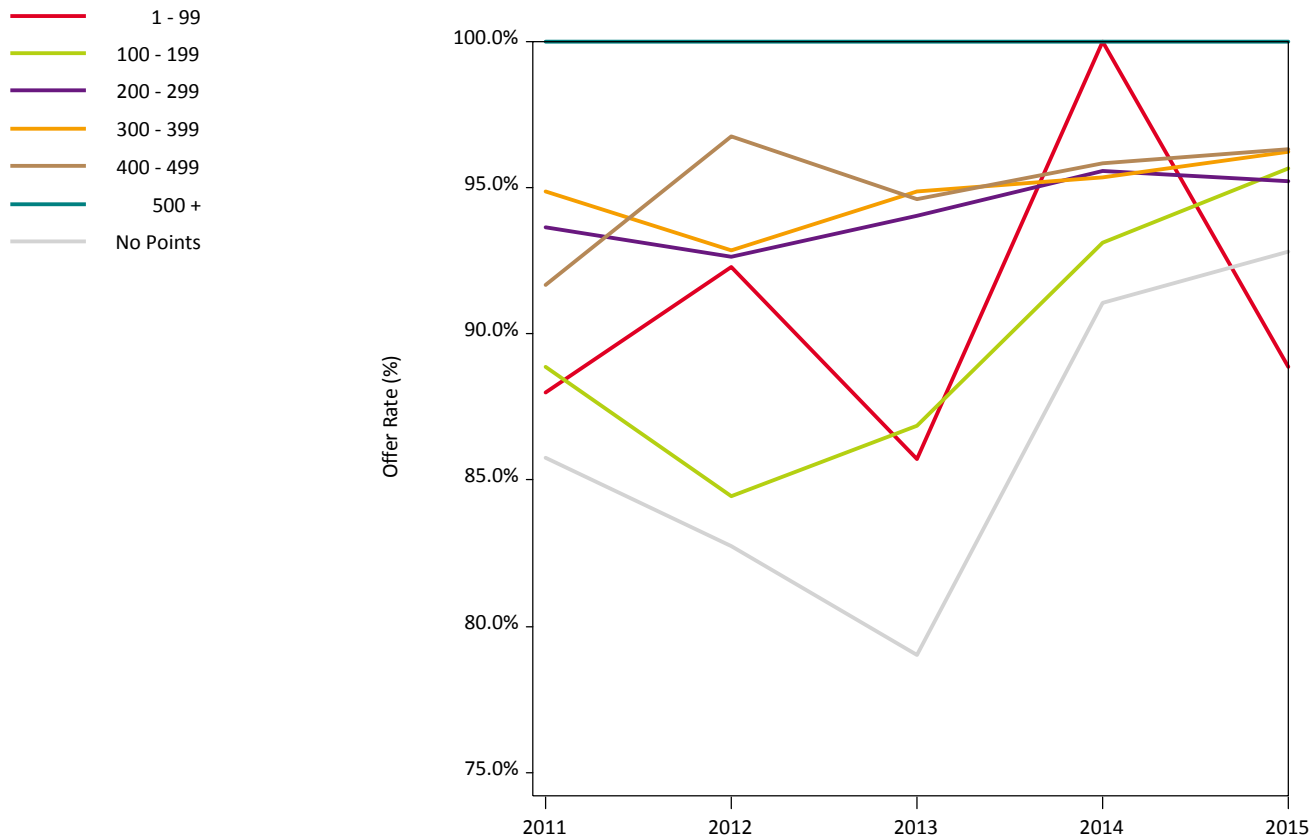
Table shows numbers of applicants and acceptances by applicant tariff band.

Tariff Group		2011	2012	2013	2014	2015
1 - 99	Applicants	125	65	70	55	45
	Applicants Accepted	95	35	55	45	25
100 - 199	Applicants	180	225	190	290	230
	Applicants Accepted	105	150	135	215	170
200 - 299	Applicants	315	475	510	675	625
	Applicants Accepted	265	395	445	580	535
300 - 399	Applicants	195	350	390	430	400
	Applicants Accepted	165	310	355	390	370
400 - 499	Applicants	60	155	185	240	270
	Applicants Accepted	55	140	170	215	245
500 +	Applicants	25	15	15	40	45
	Applicants Accepted	20	15	15	40	45
No Points	Applicants	1,385	710	825	905	790
	Applicants Accepted	1,045	495	570	640	545

15. Applicant Tariff Band - Offers

15.1 - Applicant Tariff Band Offer Rates (Applicant Level) Graph

The offer rates (applicant level) by applicant tariff band.



15.2 - Applicant Tariff Band Offer Rates (Applicant Level) Table

The offer rates (applicant level) by applicant tariff band.

Tariff Band	2011	2012	2013	2014	2015
1 - 99	88.0%	92.3%	85.7%	100.0%	88.9%
100 - 199	88.9%	84.4%	86.8%	93.1%	95.7%
200 - 299	93.7%	92.6%	94.1%	95.6%	95.2%
300 - 399	94.9%	92.9%	94.9%	95.3%	96.3%
400 - 499	91.7%	96.8%	94.6%	95.8%	96.3%
500 +	100.0%	100.0%	100.0%	100.0%	100.0%
No Points	85.8%	82.7%	79.0%	91.1%	92.8%

15.3 - Applicant Tariff Band Offers Data Table

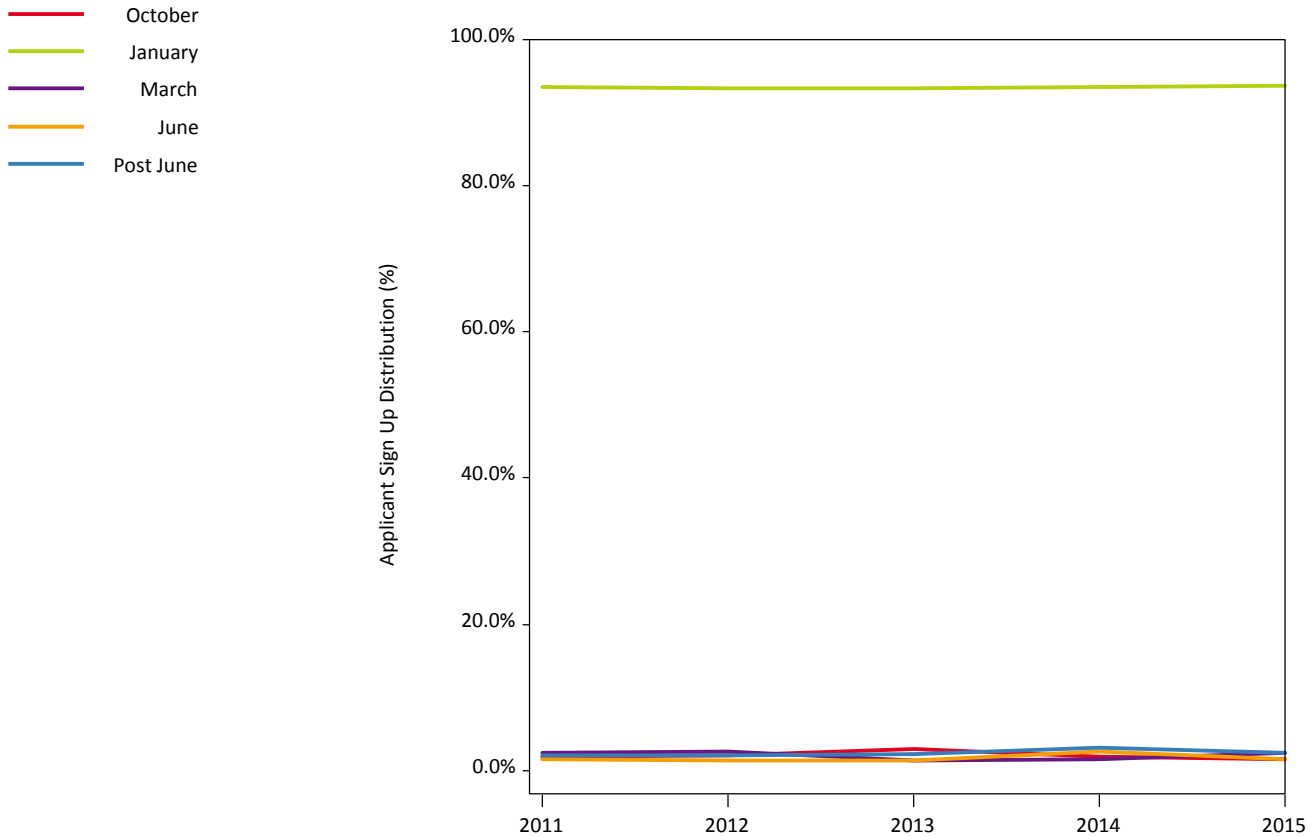
Table shows numbers of applicants and offers by applicant tariff band.

Tariff Group		2011	2012	2013	2014	2015
1 - 99	Applicants	125	65	70	55	45
	Applicants Offered	110	60	60	50	40
100 - 199	Applicants	180	225	190	290	230
	Applicants Offered	160	185	160	270	220
200 - 299	Applicants	315	475	505	675	625
	Applicants Offered	295	440	480	645	595
300 - 399	Applicants	195	350	390	430	400
	Applicants Offered	180	325	370	410	385
400 - 499	Applicants	60	155	185	240	270
	Applicants Offered	55	150	175	230	260
500 +	Applicants	25	15	15	40	45
	Applicants Offered	25	15	15	40	45
No Points	Applicants	1,370	695	810	895	765
	Applicants Offered	1,180	575	640	820	710

16. Applicants Applied by UCAS Deadline

16.1 - Proportion Applied by UCAS Deadlines Graph

The proportion of applicants that applied by the UCAS deadlines.



16.2 - Applied by UCAS Deadlines Data Table

The number of applicants that applied by the UCAS deadlines.

Deadline	2011	2012	2013	2014	2015
October	45	40	65	50	35
January	2,135	1,860	2,040	2,460	2,245
March	55	50	30	40	60
June	35	25	30	70	35
Post June	10	15	20	10	25
Total	2,285	1,990	2,185	2,635	2,400

16.3 - Proportion Applied by UCAS Deadlines Table

The proportion of applicants that applied by the UCAS deadlines.

Deadline	2011	2012	2013	2014	2015
October	1.9%	2.0%	2.9%	1.9%	1.5%
January	93.5%	93.4%	93.3%	93.4%	93.6%
March	2.5%	2.6%	1.5%	1.5%	2.4%
June	1.6%	1.3%	1.5%	2.7%	1.5%
Post June	2.1%	2.1%	2.3%	3.1%	2.5%

17. Applicant Tariff Band - Detailed

17.1 - Detailed Tariff Band Data Table - Applicants and Acceptances

The number of applicants and acceptances by applicant tariff band.

Tariff Group		2011	2012	2013	2014	2015
1 - 39	Applicants	55	25	20	10	5
	Applicants Accepted	45	20	15	10	0
40 - 79	Applicants	45	20	30	20	15
	Applicants Accepted	35	5	20	15	10
80 - 119	Applicants	40	35	35	40	40
	Applicants Accepted	20	20	25	30	25
120 - 159	Applicants	60	85	85	90	70
	Applicants Accepted	30	50	55	70	50
160 - 199	Applicants	105	125	95	180	145
	Applicants Accepted	65	90	70	140	115
200 - 239	Applicants	120	150	155	215	185
	Applicants Accepted	95	120	135	175	155
240 - 279	Applicants	130	185	210	235	195
	Applicants Accepted	110	155	175	210	170
280 - 319	Applicants	115	205	210	280	295
	Applicants Accepted	100	180	195	245	260
320 - 359	Applicants	80	160	160	165	165
	Applicants Accepted	70	140	150	155	145
360 - 399	Applicants	55	130	165	205	185
	Applicants Accepted	50	120	145	185	175
400 - 439	Applicants	35	120	155	205	215
	Applicants Accepted	30	110	140	180	195
440 - 479	Applicants	20	25	20	30	40
	Applicants Accepted	15	25	20	30	40
480 - 519	Applicants	10	10	15	10	20
	Applicants Accepted	10	10	15	10	20
520 - 559	Applicants	10	5	5	15	10
	Applicants Accepted	10	5	5	15	10
560 - 599	Applicants	5	5	5	5	10
	Applicants Accepted	0	0	5	5	5
600 - 639	Applicants	5	5	0	0	5
	Applicants Accepted	5	5	0	0	5
640 - 679	Applicants	0	0	0	5	5
	Applicants Accepted	0	0	0	5	5
680 - 719	Applicants	0	0	0	5	5
	Applicants Accepted	0	0	0	5	5
720 - 759	Applicants	0	0	0	0	5
	Applicants Accepted	0	0	0	0	5
760 - 799	Applicants	0	0	0	0	0
	Applicants Accepted	0	0	0	0	0
800 +	Applicants	0	0	0	0	0
	Applicants Accepted	0	0	0	0	0

17.2 - Detailed Tariff Band Data Table - Applicants and Offers

The number of applicants and offers by applicant tariff band.

Tariff Group		2011	2012	2013	2014	2015
1 - 39	Applicants	55	25	20	10	5
	Applicants Offered	50	20	15	10	5
40 - 79	Applicants	45	20	30	20	15
	Applicants Offered	40	20	25	15	15
80 - 119	Applicants	40	35	35	40	40
	Applicants Offered	35	30	30	40	35
120 - 159	Applicants	60	85	80	90	70
	Applicants Offered	55	70	70	90	70
160 - 199	Applicants	105	125	95	180	145
	Applicants Offered	90	105	85	165	135
200 - 239	Applicants	120	150	155	215	185
	Applicants Offered	115	140	145	205	180
240 - 279	Applicants	130	185	210	235	195
	Applicants Offered	120	170	200	225	185
280 - 319	Applicants	115	205	210	280	295
	Applicants Offered	110	190	200	270	280
320 - 359	Applicants	80	160	160	165	165
	Applicants Offered	80	145	150	160	155
360 - 399	Applicants	55	130	165	205	185
	Applicants Offered	55	120	155	195	180
400 - 439	Applicants	35	120	155	205	215
	Applicants Offered	35	115	145	190	205
440 - 479	Applicants	20	25	20	30	40
	Applicants Offered	20	25	20	30	40
480 - 519	Applicants	10	10	15	10	20
	Applicants Offered	10	10	15	10	20
520 - 559	Applicants	10	5	5	15	10
	Applicants Offered	10	5	5	15	10
560 - 599	Applicants	5	5	5	5	10
	Applicants Offered	5	0	5	5	10
600 - 639	Applicants	5	5	0	0	5
	Applicants Offered	5	5	0	0	5
640 - 679	Applicants	0	0	0	5	5
	Applicants Offered	0	0	0	5	5
680 - 719	Applicants	0	0	0	5	5
	Applicants Offered	0	0	0	5	5
720 - 759	Applicants	0	0	0	0	5
	Applicants Offered	0	0	0	0	5
760 - 799	Applicants	0	0	0	0	0
	Applicants Offered	0	0	0	0	0
800 +	Applicants	0	0	0	0	0
	Applicants Offered	0	0	0	0	0

18. Subject Group - Acceptances

18.1 - Acceptances by Subject Group Table

The number of acceptances by subject group.

Subject Groups	2011	2012	2013	2014	2015
Group A Medicine and Dentistry	5	0	5	5	5
Group B Subjects Allied to Medicine	245	240	320	360	290
Group C Biological Sciences	185	145	175	230	215
Group D Veterinary Sciences, Agriculture and related subjects	5	5	0	5	5
Group F Physical Sciences	50	40	50	35	50
Group G Mathematical Sciences	15	15	10	10	10
Group H Engineering	95	95	110	140	130
Group I Computer Sciences	105	120	115	155	130
Group J Technologies	10	5	5	10	5
Group K Architecture, Building and Planning	25	15	10	20	15
Group L Social studies	110	95	95	145	130
Group M Law	105	120	125	130	120
Group N Business and Administrative studies	215	180	215	230	225
Group P Mass Communication and Documentation	35	25	25	30	35
Group Q Linguistics, Classics and related subjects	30	20	20	25	20
Group R European Languages, Literature and related subjects	0	0	5	5	0
Group T Eastern, Asiatic, African, American and Australasian Languages, Literature and related subjects	5	0	0	0	0
Group V Historical and Philosophical studies	15	20	25	35	25
Group W Creative Arts and Design	205	160	175	290	290
Group X Education	75	45	50	65	65
Y Combined arts	45	25	15	40	20
Y Combined sciences	35	35	40	35	25
Y Combined social sciences	30	30	40	25	30
Y Sciences combined with social sciences or arts	80	70	65	50	55
Y Social sciences combined with arts	25	20	30	30	30
Z General, other combined & unknown	5	10	10	15	5

19. Most Popular Providers by Acceptances, Offers and Applications

19.1 - Most Popular Providers Acceptances Table

The most popular providers for applicants in 2015 by acceptances.

Provider - 2015		2011	2012	2013	2014	2015
1	Birmingham City University	310	305	405	450	365
2	University of Wolverhampton	285	230	250	310	255
3	Coventry University	115	130	145	180	140
4	Aston University, Birmingham	80	100	110	90	90
5	University of Worcester	25	30	25	75	85
6	De Montfort University	50	25	55	60	70
7	The University of Birmingham	85	75	70	75	65
8	Nottingham Trent University	55	45	55	80	55
9	Staffordshire University	60	50	60	60	45
10	Newman University, Birmingham	35	30	30	55	40
	University College Birmingham	40	35	25	40	40
12	The Manchester Metropolitan University	35	25	25	30	35
13	Birmingham Metropolitan College (Formerly Matthew Boulton College)	30	25	35	40	30
	University of the Arts London	20	15	5	25	30
15	University of Derby	30	20	20	20	25

19.2 - Most Popular Providers Offers Table

The most popular providers for applicants in 2015 by offers.

Provider - 2015		2011	2012	2013	2014	2015
1	University of Wolverhampton	825	815	800	1,155	925
2	Birmingham City University	725	730	760	930	810
3	Coventry University	420	590	590	685	620
4	Aston University, Birmingham	275	250	300	320	330
5	University of Worcester	80	90	110	260	275
6	De Montfort University	190	180	215	245	245
7	Nottingham Trent University	190	160	200	245	230
	The University of Birmingham	250	225	255	270	230
9	Newman University, Birmingham	170	140	125	160	185
10	Staffordshire University	155	180	215	250	185
11	The Manchester Metropolitan University	140	105	135	140	170
12	University of Derby	150	115	115	125	130
13	University of Leicester	70	65	80	75	85
14	University College Birmingham	80	80	55	85	75
15	Keele University	110	80	75	90	75

19.3 - Most Popular Providers Applications Table

The most popular providers for applicants in 2015 by applications.

Provider - 2015		2011	2012	2013	2014	2015
1	Birmingham City University	1,360	1,230	1,345	1,575	1,310
2	University of Wolverhampton	1,190	1,080	1,200	1,290	1,005
3	Coventry University	905	940	1,035	1,170	980
4	The University of Birmingham	660	565	645	755	605
5	Aston University, Birmingham	500	410	470	530	525
6	University of Worcester	200	205	285	545	465
7	De Montfort University	325	275	300	350	345
8	Nottingham Trent University	325	245	265	315	300
9	Staffordshire University	380	270	340	425	285
10	The Manchester Metropolitan University	235	190	185	210	240
11	Newman University, Birmingham	265	185	165	205	225
12	University of Derby	255	200	210	210	190
13	University of the Arts London	105	100	90	165	185
14	The University of Nottingham	190	130	160	175	135
15	Keele University	230	180	185	165	130

20. Most Popular Subject Lines by Acceptances, Offers and Applications

20.1 - Most Popular Subject Lines Acceptances Table

The most popular subject lines for applicants in 2015 by acceptances.

Subject line - 2015		2011	2012	2013	2014	2015
1	W2 - Design studies	115	100	100	155	160
2	B7 - Nursing	110	125	165	190	120
3	M1 - Law by Area	85	95	100	95	105
4	I1 - Computer Science	85	85	90	105	95
5	C6 - Sport and Exercise Science	70	60	70	110	90
6	NN - Combinations within Business & Admin. Studies	80	60	115	90	85
7	C8 - Psychology	75	60	60	80	80
8	L5 - Social Work	60	30	45	80	65
9	B9 - Others in Subjects allied to Medicine	45	40	55	85	55
10	X3 - Academic studies in Education	30	25	30	30	40
11	N1 - Business studies	20	25	15	30	40
12	B8 - Medical Technology	15	20	25	20	35
13	H6 - Electronic and Electrical Engineering	20	20	30	20	35
14	H3 - Mechanical Engineering	20	20	20	40	30
15	B2 - Pharmacology, Toxicology and Pharmacy	30	25	35	25	30

20.2 - Most Popular Subject Lines Offers Table

The most popular subject lines for applicants in 2015 by offers.

Subject Line - 2015		2011	2012	2013	2014	2015
1	M1 - Law by Area	300	390	415	380	480
2	W2 - Design studies	210	215	245	430	385
3	I1 - Computer Science	280	365	340	405	375
4	C8 - Psychology	310	320	290	360	350
5	C6 - Sport and Exercise Science	245	225	215	370	310
6	NN - Combinations within Business & Admin. Studies	300	270	355	345	285
7	B7 - Nursing	170	220	280	350	215
8	L5 - Social Work	100	80	115	190	205
9	N2 - Management studies	185	160	200	195	185
10	Y Combs of science/engineering with social studies/bus/law	125	135	90	80	170
11	H6 - Electronic and Electrical Engineering	110	90	105	75	165
12	B9 - Others in Subjects allied to Medicine	140	135	180	380	160
13	H3 - Mechanical Engineering	80	80	80	140	150
14	N4 - Accounting	95	80	100	75	140
	X3 - Academic studies in Education	90	70	95	105	140

20.3 - Most Popular Subject Lines Applications Table

The most popular subject lines for applicants in 2015 by applications.

Subject Line - 2015		2011	2012	2013	2014	2015
1	B7 - Nursing	965	1,110	1,730	1,815	1,270
2	W2 - Design studies	575	500	510	795	760
3	M1 - Law by Area	520	560	540	520	585
4	I1 - Computer Science	385	465	440	530	485
5	C8 - Psychology	450	400	345	420	420
6	C6 - Sport and Exercise Science	355	295	290	495	385
7	NN - Combinations within Business & Admin. Studies	435	395	450	480	350
8	L5 - Social Work	360	250	295	370	330
9	B9 - Others in Subjects allied to Medicine	300	260	330	555	300
10	B8 - Medical Technology	135	150	190	220	240
	N2 - Management studies	300	220	265	245	240
12	H6 - Electronic and Electrical Engineering	170	140	145	125	230
13	H3 - Mechanical Engineering	120	115	105	190	195
14	X3 - Academic studies in Education	145	110	140	160	195
15	Y Combs of science/engineering with social studies/bus/law	165	160	105	105	185

21. Glossary

Term	Definition
Acceptance	An applicant who at the end of the cycle has been placed for entry into higher education.
Acceptance rate	The number of acceptances divided by the number of applicants.
Adjustment	An acceptance route where applicants who have met and exceeded the conditions of their firm choice choose to take up an alternative offer.
Age	This analysis uses country-specific age definitions that align with the cut off points for school and college cohorts within the different administrations of the UK. For England and Wales, ages are defined on the 31 August, for Northern Ireland on the 1 July and for Scotland on the 28 February the following year. Defining ages in this way matches the assignment of children to school cohorts. For applicants outside of the UK the cohort cut off for England and Wales has been used.
Clearing	An acceptance route available late in the application cycle.
Conditional firm	An offer made by a provider dependent on achieving specified conditions which has been accepted by the applicant as their first choice.
Conditional offer	Offer made by provider depend on meeting specified conditions which may include academic and/or non academic conditions.
Extra	An acceptance route where applicants who held no offers after using all five main scheme choices make additional choices.
Firm choice	An offer made by a provider which has been confirmed by the applicant as their first choice. These can be either conditional (dependent on achieving specified conditions) or unconditional (applicant has met specified conditions and are assumed to be accepted or placed at the provider).
Insurance choice	An offer made by a provider which has been confirmed by the applicant as their second choice, in case the conditions of the firm choice are not met. These can be either conditional (dependent on achieving specified requirements) or unconditional (no further requirements to be met).
Main scheme	The main UCAS application scheme through which up to five providers/courses can be applied to. This opens in September and closes to new applications on 30 June the following year.
Offer	Provider decision to grant a place to an applicant; may be subject to satisfying academic and/or other criteria. Based on choice state at the June 30th deadline.
Provider	A higher education provider - a university or college.
Provider tariff group	The grouping of providers based on the average levels of attainment of their accepted applicants (summarised through UCAS Tariff points) in a period of application cycles spanning from 2004 to 2011. Each group of providers accounted for around a third of all UK 18 year old acceptances in these cycles. Each group of providers accounted for around a third of all UK 18 year old acceptances in these cycles, with the following categories: 'Higher tariff', 'Medium tariff' and 'Lower tariff'.
RPA	Record of Prior Acceptance, where an application is submitted to UCAS by a provider when an unconditional firm has been offered and accepted by the applicant.
Tariff	A numerical summary of qualification level.
Unconditional offer	Offer made by provider when it is satisfied that the applicant has met specific conditions.