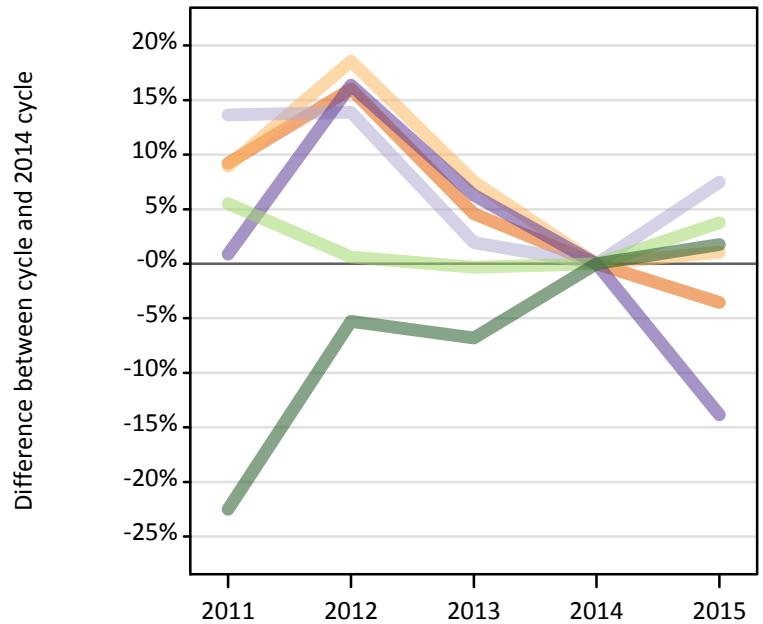
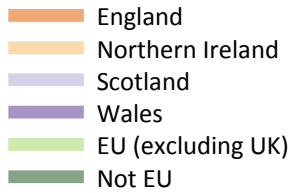


Applicants at the interim November comparison point (2015 cycle)

B.1 Applicants by domicile group at the November interim comparison point (third Monday in month)

Difference between cycle and 2014 cycle



B.2 Applicants by domicile group at the November interim comparison point (third Monday in month)

Domicile of applicant	2011	2012	2013	2014	2015
England	112,020	118,980	107,250	102,560	98,930
Northern Ireland	3,650	3,970	3,600	3,350	3,380
Scotland	4,240	4,250	3,800	3,730	4,010
Wales	4,850	5,590	5,110	4,810	4,140
--UK	124,760	132,790	119,760	114,450	110,460
EU (excluding UK)	9,470	9,030	8,950	8,980	9,320
Not EU	13,530	16,540	16,270	17,460	17,770
--All	147,760	158,360	144,980	140,890	137,540

B.3 Applicants by domicile group at the November interim comparison point (third Monday in month)

Difference between cycle and 2014 cycle

Domicile of applicant	2011	2012	2013	2014	2015
England	9%	16%	5%	0%	-4%
Northern Ireland	9%	19%	7%	0%	1%
Scotland	14%	14%	2%	0%	7%
Wales	1%	16%	6%	0%	-14%
--UK	9%	16%	5%	0%	-3%
EU (excluding UK)	6%	1%	0%	0%	4%
Not EU	-22%	-5%	-7%	0%	2%
--All	5%	12%	3%	0%	-2%

B.4 Increases between November interim comparison point and the January deadline in previous cycles Rounded to nearest 10 per cent

Domicile of applicant	2011	2012	2013	2014
England	280%	220%	270%	300%
Northern Ireland	420%	360%	440%	480%
Scotland	840%	820%	950%	1000%
Wales	340%	270%	300%	340%
--UK	300%	250%	300%	330%
EU (excluding UK)	330%	300%	320%	340%
Not EU	180%	160%	190%	190%
--All	290%	240%	290%	310%

B.5 Technical notes and definitions

Applicants have been able to submit applications for all 2015 courses since early September.

This statistical release covers all applicants, including those who have applied for courses with a 15 October deadline.

Applicant totals are those at the third Monday of the month for each cycle (the 'interim comparison point').

The date of the interim comparison point varies from cycle to cycle. For the November interim comparison point the dates for the 2011 to 2015 cycles are 15/11/2010, 21/11/2011, 19/11/2012, 18/11/2013 and 17/11/2014 respectively.

Cycle to cycle proportional changes at the interim comparison points before the January deadline are often different (in both size and direction) from the proportional changes at the January deadline.

Counts of the number of applicants reported have been rounded to the nearest 10, this may result in instances where totals do not equal the sum of the components. Proportional changes are calculated from unrounded data and are presented rounded (to nearest 1 per cent or 10 per cent as appropriate).

Applicants

Individuals who have made an application through UCAS during the cycle reported (including applications for deferred entry.)

Domicile

Declared area of permanent residence. The Channel Islands and the Isle of Man are reported under 'Not EU'.