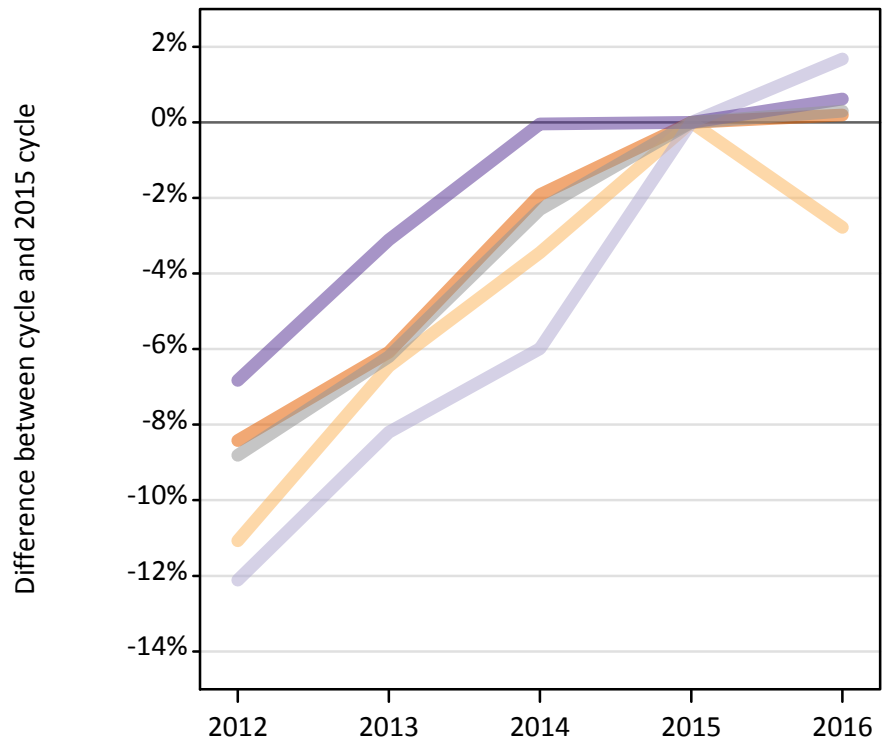
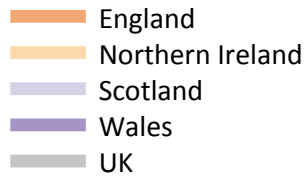


Applications by country and type of provider at the 30 June deadline

I.5.1 Applications by domicile and country of provider : All domiciles

Difference between cycle and 2015 cycle



I.5.2 Applications by domicile and country of provider : All domiciles

Domicile of applicant and country of provider		2012	2013	2014	2015	2016
All domiciles	England	2,210,010	2,266,440	2,367,110	2,413,220	2,417,850
	Northern Ireland	58,570	61,610	63,590	65,860	64,030
	Scotland	266,340	278,200	284,900	303,060	308,140
	Wales	102,040	106,110	109,470	109,520	110,200
	UK	2,636,960	2,712,360	2,825,070	2,891,650	2,900,210

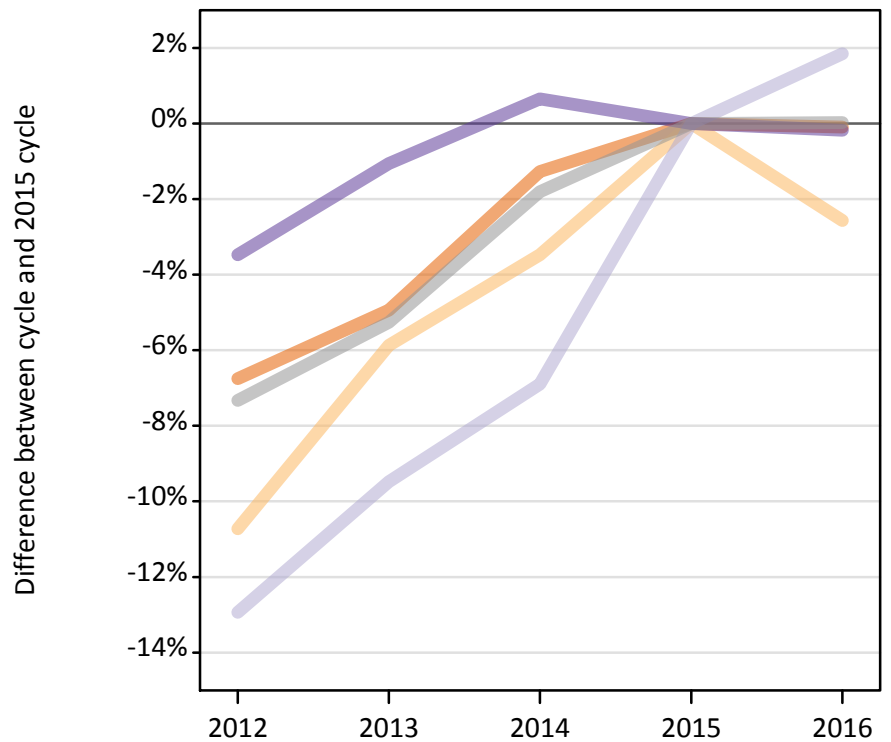
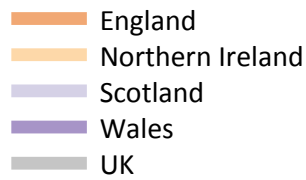
I.5.3 Applications by domicile and country of provider : All domiciles

Difference between cycle and 2015 cycle

Domicile of applicant and country of provider		2012	2013	2014	2015	2016
All domiciles	England	-8%	-6%	-2%	0%	0%
	Northern Ireland	-11%	-6%	-3%	0%	-3%
	Scotland	-12%	-8%	-6%	0%	2%
	Wales	-7%	-3%	-0%	0%	1%
	UK	-9%	-6%	-2%	0%	0%

I.5.4 Applications by domicile and country of provider : UK

Difference between cycle and 2015 cycle



I.5.5 Applications by domicile and country of provider : UK

Domicile of applicant and country of provider		2012	2013	2014	2015	2016
UK	England	1,847,430	1,883,260	1,956,080	1,981,180	1,979,290
	Northern Ireland	53,940	56,870	58,320	60,420	58,870
	Scotland	202,830	210,880	216,880	232,950	237,260
	Wales	89,930	92,180	93,770	93,170	93,000
	UK	2,194,130	2,243,190	2,325,050	2,367,720	2,368,420

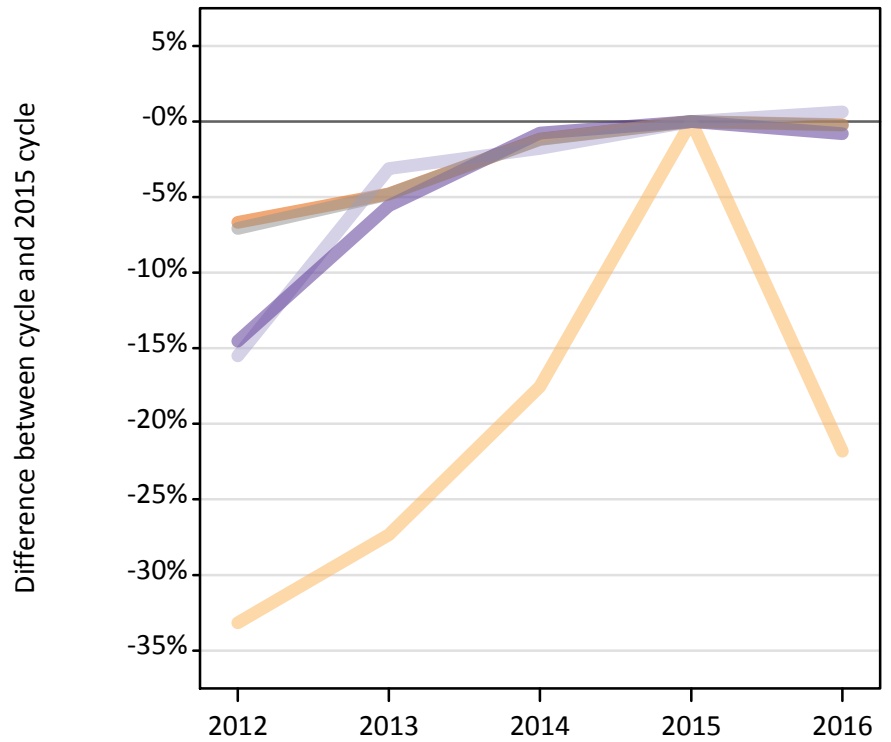
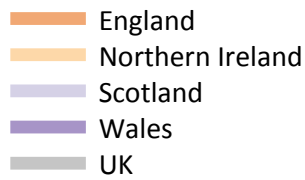
I.5.6 Applications by domicile and country of provider : UK

Difference between cycle and 2015 cycle

Domicile of applicant and country of provider		2012	2013	2014	2015	2016
UK	England	-7%	-5%	-1%	0%	-0%
	Northern Ireland	-11%	-6%	-3%	0%	-3%
	Scotland	-13%	-9%	-7%	0%	2%
	Wales	-3%	-1%	1%	0%	-0%
	UK	-7%	-5%	-2%	0%	0%

I.5.7 Applications by domicile and country of provider : England

Difference between cycle and 2015 cycle



I.5.8 Applications by domicile and country of provider : England

Domicile of applicant and country of provider		2012	2013	2014	2015	2016
England	England	1,763,610	1,799,080	1,867,540	1,889,510	1,885,420
	Northern Ireland	2,260	2,460	2,790	3,380	2,650
	Scotland	31,540	36,160	36,660	37,330	37,560
	Wales	44,240	48,870	51,370	51,760	51,340
	UK	1,841,650	1,886,570	1,958,350	1,981,970	1,976,970

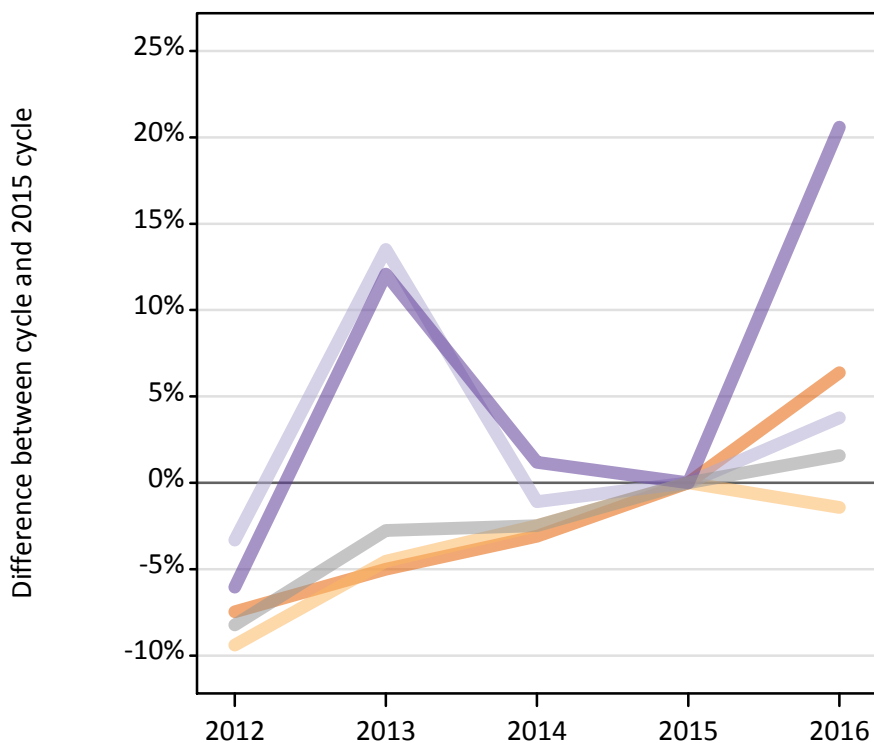
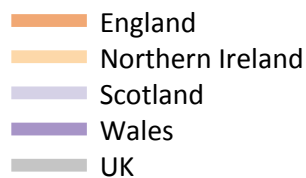
I.5.9 Applications by domicile and country of provider : England

Difference between cycle and 2015 cycle

Domicile of applicant and country of provider		2012	2013	2014	2015	2016
England	England	-7%	-5%	-1%	0%	-0%
	Northern Ireland	-33%	-27%	-18%	0%	-22%
	Scotland	-15%	-3%	-2%	0%	1%
	Wales	-15%	-6%	-1%	0%	-1%
	UK	-7%	-5%	-1%	0%	-0%

I.5.10 Applications by domicile and country of provider : Northern Ireland

Difference between cycle and 2015 cycle



I.5.11 Applications by domicile and country of provider : Northern Ireland

Domicile of applicant and country of provider		2012	2013	2014	2015	2016
Northern Ireland	England	24,960	25,620	26,140	26,970	28,700
	Northern Ireland	51,380	54,130	55,300	56,700	55,890
	Scotland	8,570	10,070	8,770	8,870	9,200
	Wales	1,100	1,320	1,190	1,180	1,420
	UK	86,010	91,130	91,390	93,720	95,200

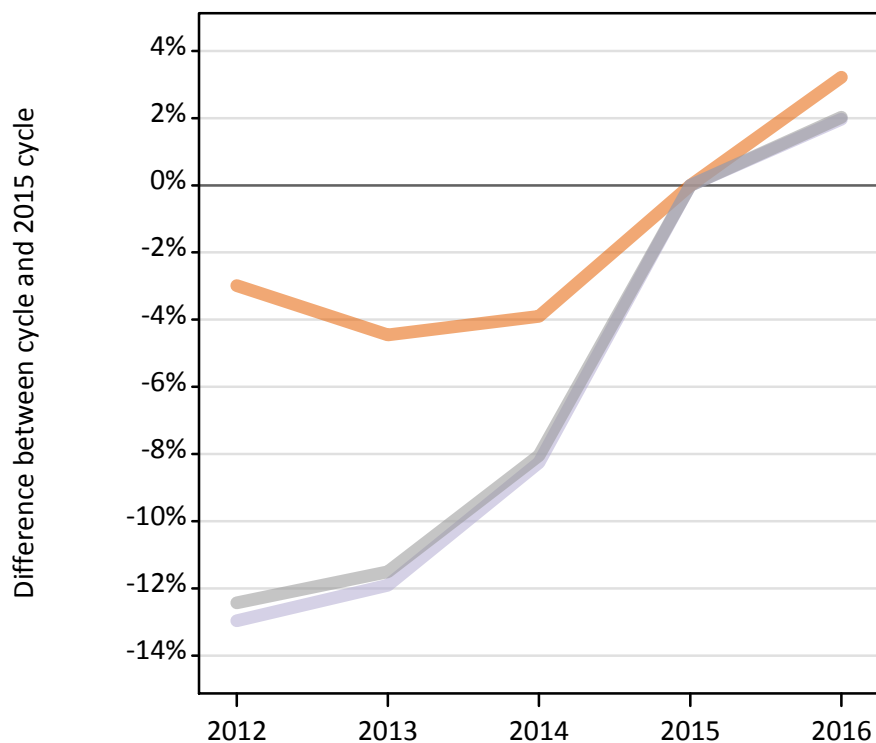
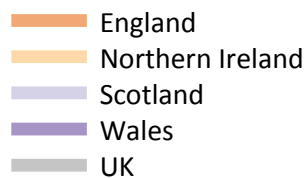
I.5.12 Applications by domicile and country of provider : Northern Ireland

Difference between cycle and 2015 cycle

Domicile of applicant and country of provider		2012	2013	2014	2015	2016
Northern Ireland	England	-7%	-5%	-3%	0%	6%
	Northern Ireland	-9%	-5%	-2%	0%	-1%
	Scotland	-3%	14%	-1%	0%	4%
	Wales	-6%	12%	1%	0%	21%
	UK	-8%	-3%	-2%	0%	2%

I.5.13 Applications by domicile and country of provider : Scotland

Difference between cycle and 2015 cycle



I.5.14 Applications by domicile and country of provider : Scotland

Domicile of applicant and country of provider		2012	2013	2014	2015	2016
Scotland	England	9,810	9,660	9,720	10,120	10,440
	Northern Ireland	210	200	140	230	230
	Scotland	161,620	163,580	170,370	185,700	189,350
	Wales	250	250	260	250	230
	UK	171,890	173,690	180,490	196,280	200,260

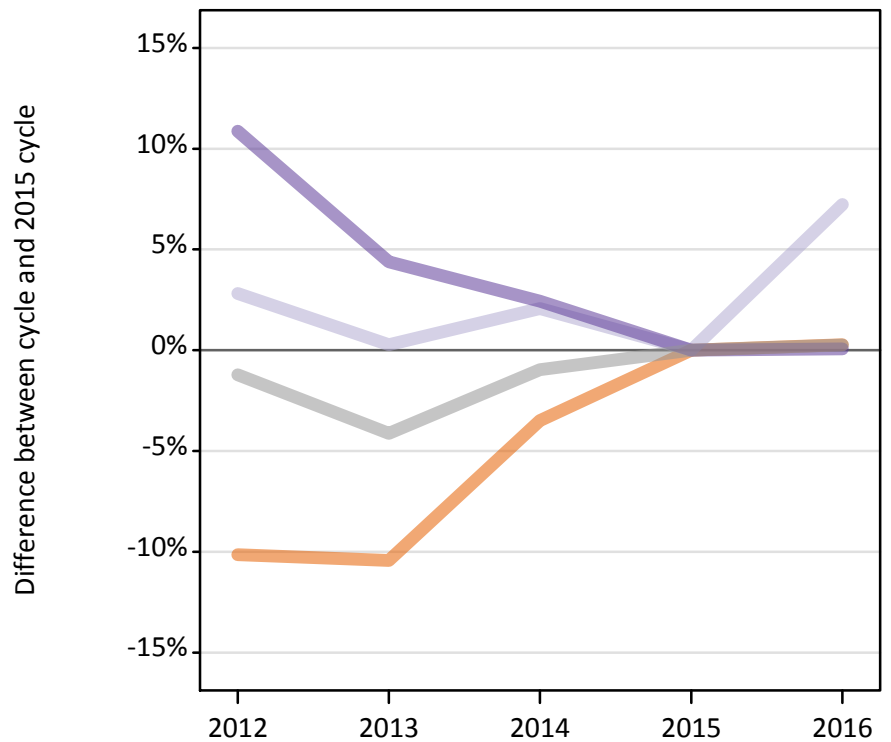
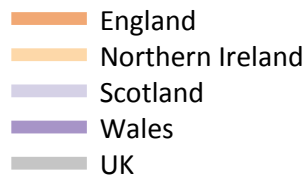
I.5.15 Applications by domicile and country of provider : Scotland

Difference between cycle and 2015 cycle

Domicile of applicant and country of provider		2012	2013	2014	2015	2016
Scotland	England	-3%	-4%	-4%	0%	3%
	Northern Ireland	-8%	-12%	-37%	0%	4%
	Scotland	-13%	-12%	-8%	0%	2%
	Wales	3%	1%	5%	0%	-6%
	UK	-12%	-12%	-8%	0%	2%

I.5.16 Applications by domicile and country of provider : Wales

Difference between cycle and 2015 cycle



I.5.17 Applications by domicile and country of provider : Wales

Domicile of applicant and country of provider		2012	2013	2014	2015	2016
Wales	England	49,050	48,900	52,690	54,590	54,740
	Northern Ireland	90	90	90	110	100
	Scotland	1,090	1,070	1,090	1,060	1,140
	Wales	44,330	41,740	40,960	39,990	40,010
	UK	94,580	91,790	94,830	95,750	96,000

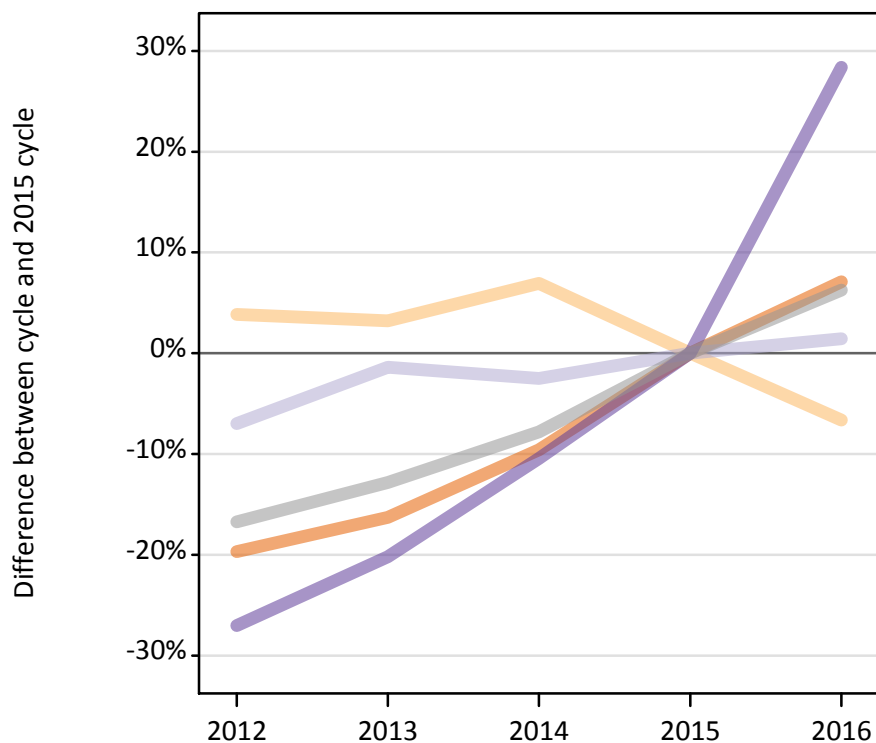
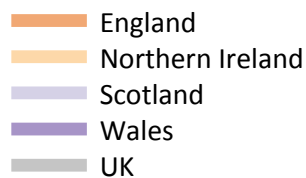
I.5.18 Applications by domicile and country of provider : Wales

Difference between cycle and 2015 cycle

Domicile of applicant and country of provider		2012	2013	2014	2015	2016
Wales	England	-10%	-10%	-3%	0%	0%
	Northern Ireland	-15%	-22%	-16%	0%	-6%
	Scotland	3%	0%	2%	0%	7%
	Wales	11%	4%	2%	0%	0%
	UK	-1%	-4%	-1%	0%	0%

I.5.19 Applications by domicile and country of provider : EU (excluding UK)

Difference between cycle and 2015 cycle



I.5.20 Applications by domicile and country of provider : EU (excluding UK)

Domicile of applicant and country of provider		2012	2013	2014	2015	2016
EU (excluding UK)	England	126,840	132,210	142,780	157,920	169,130
	Northern Ireland	3,570	3,550	3,680	3,440	3,210
	Scotland	43,610	46,240	45,720	46,890	47,570
	Wales	4,550	4,980	5,590	6,240	8,010
	UK	178,580	186,980	197,770	214,490	227,920

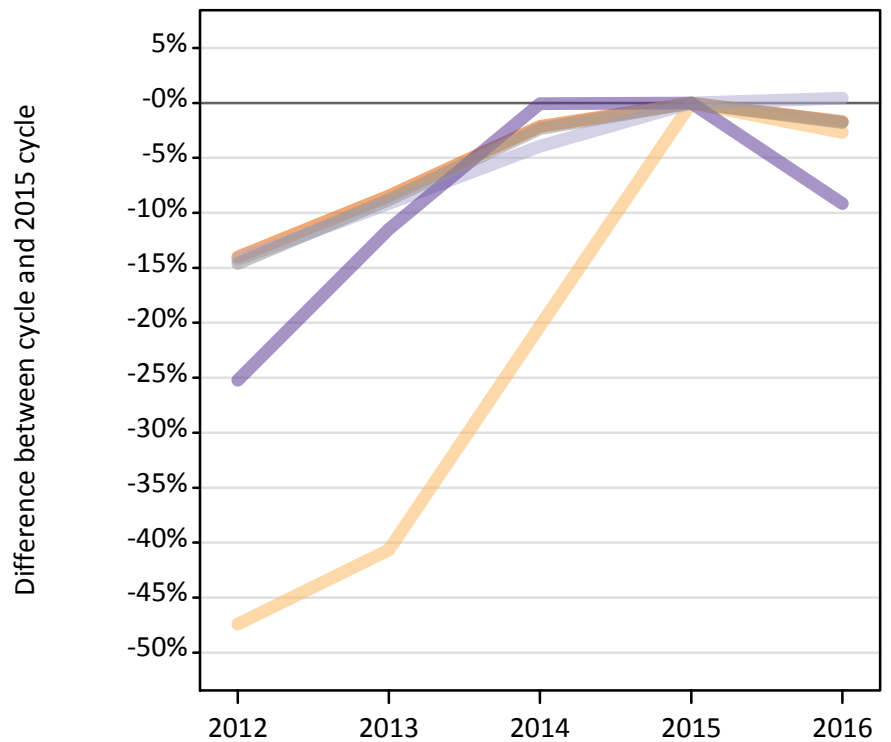
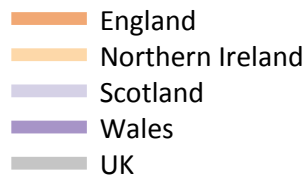
I.5.21 Applications by domicile and country of provider : EU (excluding UK)

Difference between cycle and 2015 cycle

Domicile of applicant and country of provider		2012	2013	2014	2015	2016
EU (excluding UK)	England	-20%	-16%	-10%	0%	7%
	Northern Ireland	4%	3%	7%	0%	-7%
	Scotland	-7%	-1%	-2%	0%	1%
	Wales	-27%	-20%	-10%	0%	28%
	UK	-17%	-13%	-8%	0%	6%

I.5.22 Applications by domicile and country of provider : Not EU

Difference between cycle and 2015 cycle



I.5.23 Applications by domicile and country of provider : Not EU

Domicile of applicant and country of provider		2012	2013	2014	2015	2016
Not EU	England	235,730	250,970	268,250	274,120	269,420
	Northern Ireland	1,050	1,190	1,590	2,000	1,950
	Scotland	19,910	21,080	22,300	23,210	23,310
	Wales	7,560	8,950	10,110	10,110	9,190
	UK	264,250	282,190	302,240	309,440	303,870

I.5.24 Applications by domicile and country of provider : Not EU

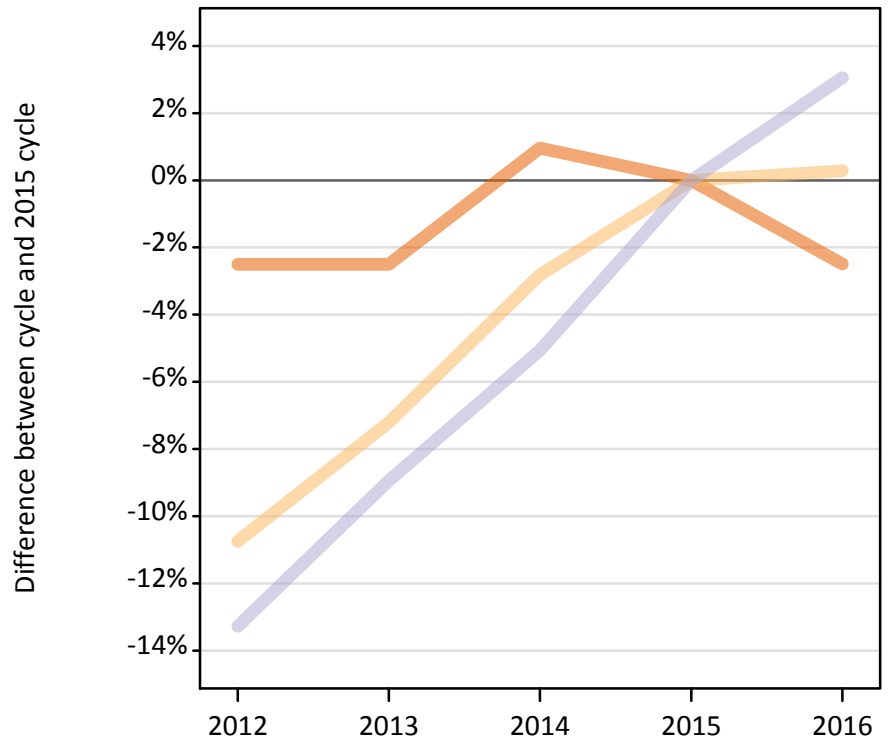
Difference between cycle and 2015 cycle

Domicile of applicant and country of provider		2012	2013	2014	2015	2016
Not EU	England	-14%	-8%	-2%	0%	-2%
	Northern Ireland	-47%	-41%	-20%	0%	-3%
	Scotland	-14%	-9%	-4%	0%	0%
	Wales	-25%	-11%	-0%	0%	-9%
	UK	-15%	-9%	-2%	0%	-2%

I.5.25 Applications by domicile and tariff group of provider : All domiciles

Difference between cycle and 2015 cycle

- 1. Lower tariff
- 2. Medium tariff
- 3. Higher tariff



I.5.26 Applications by domicile and tariff group of provider : All domiciles

Domicile of applicant and tariff group of provider		2012	2013	2014	2015	2016
All domiciles	1. Lower tariff	961,740	961,740	995,890	986,390	961,860
	2. Medium tariff	809,720	841,810	881,730	907,240	909,810
	3. Higher tariff	865,500	908,820	947,450	998,030	1,028,530
	All	2,636,960	2,712,360	2,825,070	2,891,650	2,900,210

I.5.27 Applications by domicile and tariff group of provider : All domiciles

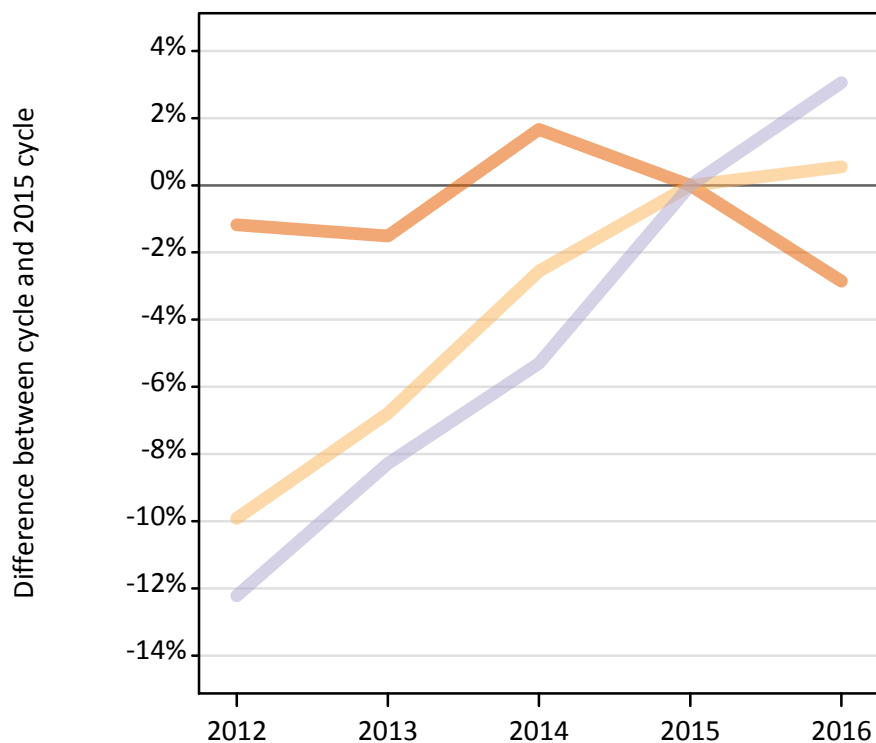
Difference between cycle and 2015 cycle

Domicile of applicant and tariff group of provider		2012	2013	2014	2015	2016
All domiciles	1. Lower tariff	-2%	-2%	1%	0%	-2%
	2. Medium tariff	-11%	-7%	-3%	0%	0%
	3. Higher tariff	-13%	-9%	-5%	0%	3%
	All	-9%	-6%	-2%	0%	0%

I.5.28 Applications by domicile and tariff group of provider : UK

Difference between cycle and 2015 cycle

- 1. Lower tariff
- 2. Medium tariff
- 3. Higher tariff



I.5.29 Applications by domicile and tariff group of provider : UK

Domicile of applicant and tariff group of provider		2012	2013	2014	2015	2016
UK	1. Lower tariff	878,410	875,470	903,720	888,890	863,520
	2. Medium tariff	687,210	711,090	743,320	762,860	767,090
	3. Higher tariff	628,510	656,630	678,020	715,970	737,820
	All	2,194,130	2,243,190	2,325,050	2,367,720	2,368,420

I.5.30 Applications by domicile and tariff group of provider : UK

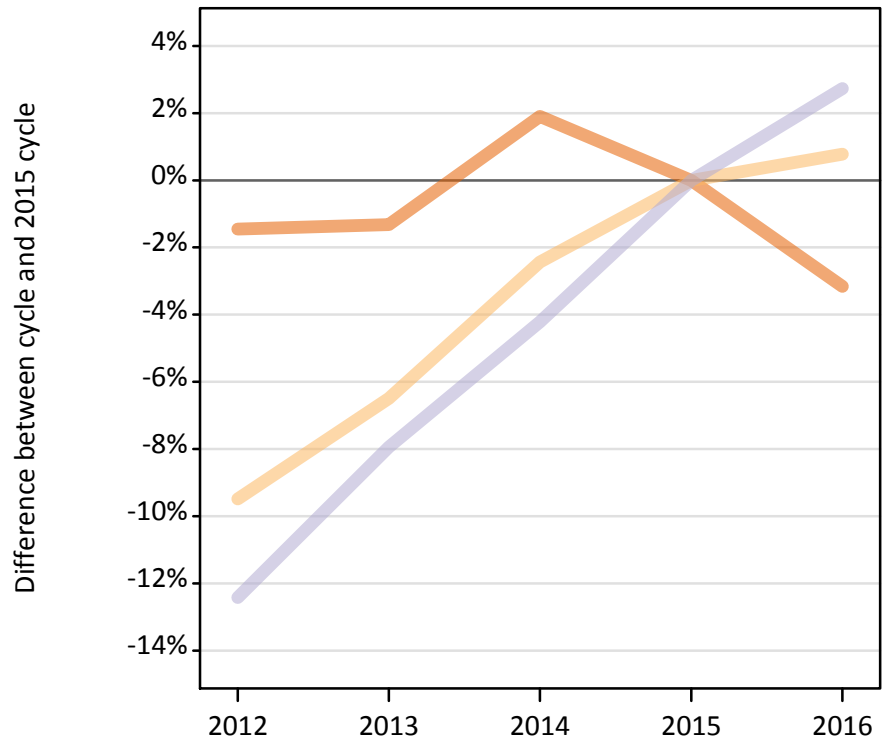
Difference between cycle and 2015 cycle

Domicile of applicant and tariff group of provider		2012	2013	2014	2015	2016
UK	1. Lower tariff	-1%	-2%	2%	0%	-3%
	2. Medium tariff	-10%	-7%	-3%	0%	1%
	3. Higher tariff	-12%	-8%	-5%	0%	3%
	All	-7%	-5%	-2%	0%	0%

I.5.31 Applications by domicile and tariff group of provider : England

Difference between cycle and 2015 cycle

- 1. Lower tariff
- 2. Medium tariff
- 3. Higher tariff



I.5.32 Applications by domicile and tariff group of provider : England

Domicile of applicant and tariff group of provider		2012	2013	2014	2015	2016
England	1. Lower tariff	791,220	792,340	818,170	802,900	777,560
	2. Medium tariff	548,500	566,640	591,240	605,980	610,680
	3. Higher tariff	501,930	527,590	548,950	573,100	588,730
	All	1,841,650	1,886,570	1,958,350	1,981,970	1,976,970

I.5.33 Applications by domicile and tariff group of provider : England

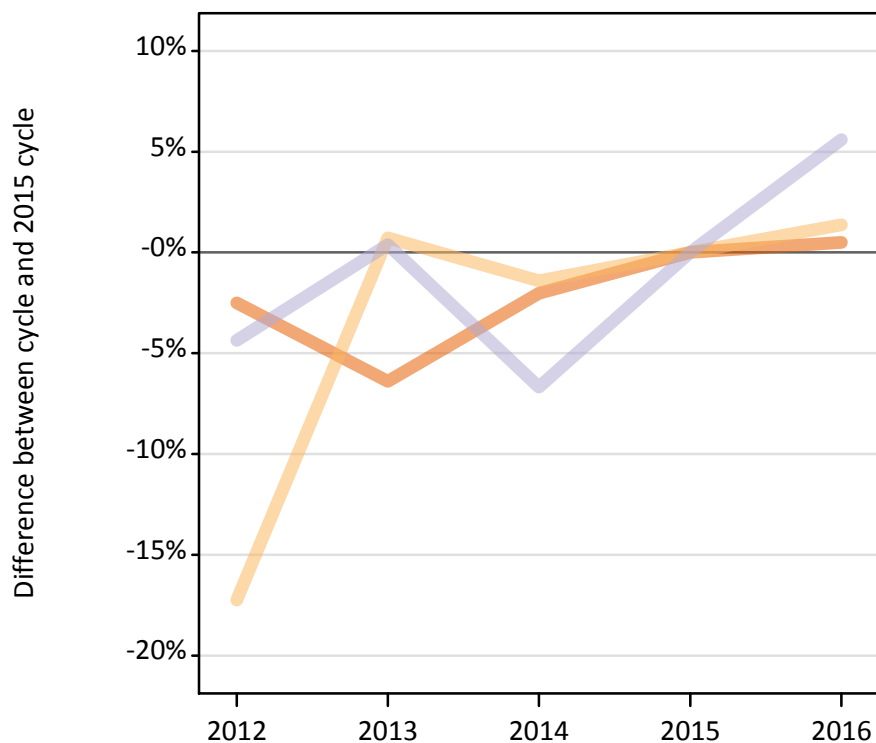
Difference between cycle and 2015 cycle

Domicile of applicant and tariff group of provider		2012	2013	2014	2015	2016
England	1. Lower tariff	-1%	-1%	2%	0%	-3%
	2. Medium tariff	-9%	-6%	-2%	0%	1%
	3. Higher tariff	-12%	-8%	-4%	0%	3%
	All	-7%	-5%	-1%	0%	-0%

I.5.34 Applications by domicile and tariff group of provider : Northern Ireland

Difference between cycle and 2015 cycle

- 1. Lower tariff
- 2. Medium tariff
- 3. Higher tariff



I.5.35 Applications by domicile and tariff group of provider : Northern Ireland

Domicile of applicant and tariff group of provider		2012	2013	2014	2015	2016
Northern Ireland	1. Lower tariff	44,080	42,320	44,290	45,210	45,440
	2. Medium tariff	28,650	34,870	34,130	34,620	35,090
	3. Higher tariff	13,290	13,950	12,970	13,890	14,670
	All	86,010	91,130	91,390	93,720	95,200

I.5.36 Applications by domicile and tariff group of provider : Northern Ireland

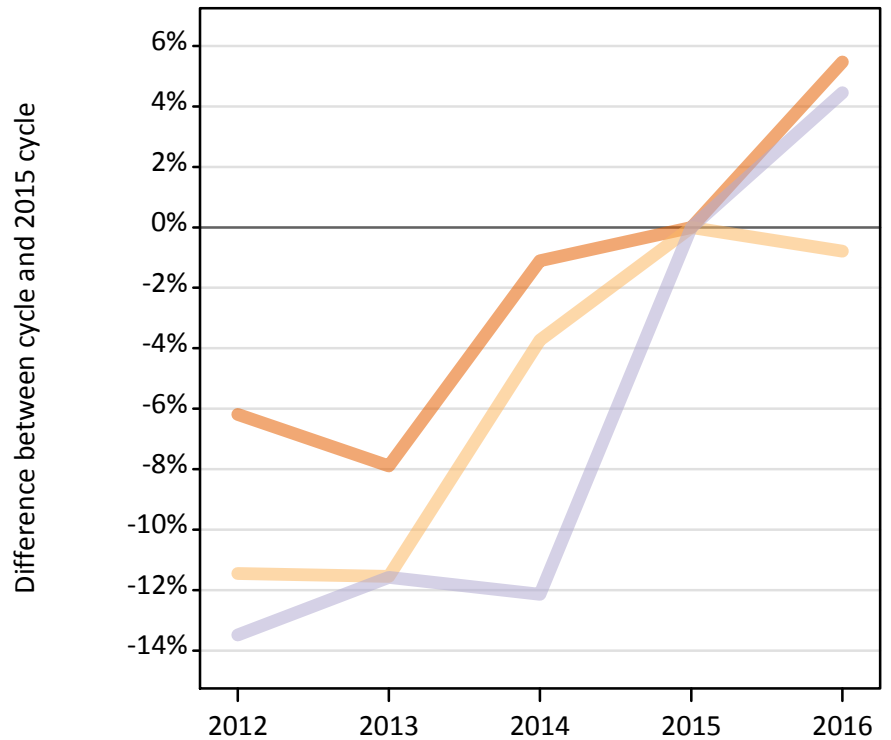
Difference between cycle and 2015 cycle

Domicile of applicant and tariff group of provider		2012	2013	2014	2015	2016
Northern Ireland	1. Lower tariff	-2%	-6%	-2%	0%	1%
	2. Medium tariff	-17%	1%	-1%	0%	1%
	3. Higher tariff	-4%	0%	-7%	0%	6%
	All	-8%	-3%	-2%	0%	2%

I.5.37 Applications by domicile and tariff group of provider : Scotland

Difference between cycle and 2015 cycle

- 1. Lower tariff
- 2. Medium tariff
- 3. Higher tariff



I.5.38 Applications by domicile and tariff group of provider : Scotland

Domicile of applicant and tariff group of provider		2012	2013	2014	2015	2016
Scotland	1. Lower tariff	2,710	2,660	2,860	2,890	3,050
	2. Medium tariff	81,200	81,120	88,280	91,700	90,980
	3. Higher tariff	87,980	89,920	89,350	101,690	106,220
	All	171,890	173,690	180,490	196,280	200,260

I.5.39 Applications by domicile and tariff group of provider : Scotland

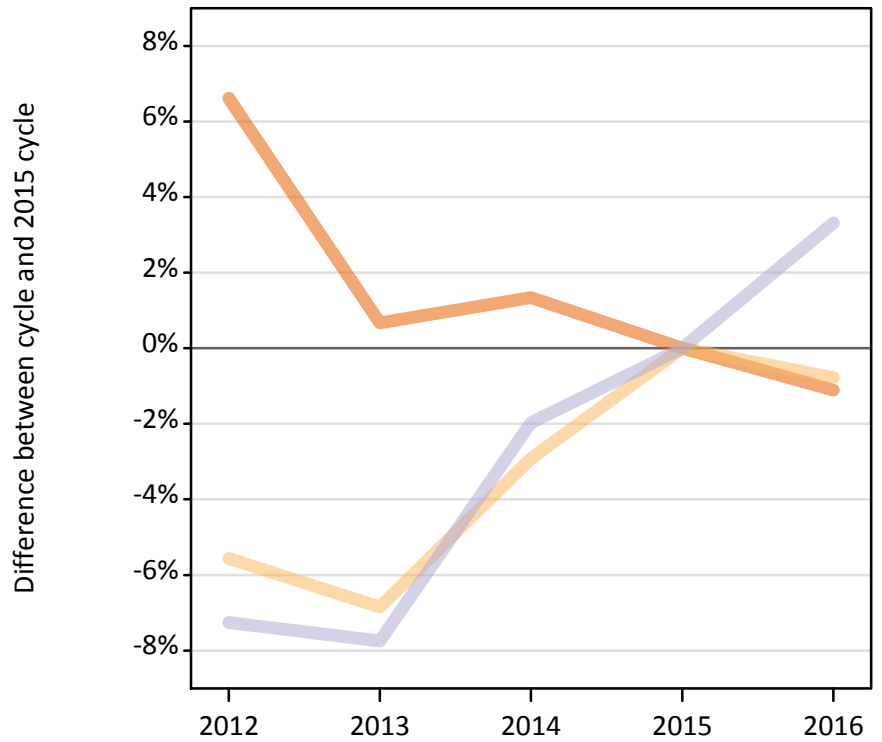
Difference between cycle and 2015 cycle

Domicile of applicant and tariff group of provider		2012	2013	2014	2015	2016
Scotland	1. Lower tariff	-6%	-8%	-1%	0%	5%
	2. Medium tariff	-11%	-12%	-4%	0%	-1%
	3. Higher tariff	-13%	-12%	-12%	0%	4%
	All	-12%	-12%	-8%	0%	2%

I.5.40 Applications by domicile and tariff group of provider : Wales

Difference between cycle and 2015 cycle

- 1. Lower tariff
- 2. Medium tariff
- 3. Higher tariff



I.5.41 Applications by domicile and tariff group of provider : Wales

Domicile of applicant and tariff group of provider		2012	2013	2014	2015	2016
Wales	1. Lower tariff	40,400	38,150	38,400	37,890	37,480
	2. Medium tariff	28,860	28,470	29,670	30,560	30,330
	3. Higher tariff	25,310	25,180	26,750	27,290	28,200
	All	94,580	91,790	94,830	95,750	96,000

I.5.42 Applications by domicile and tariff group of provider : Wales

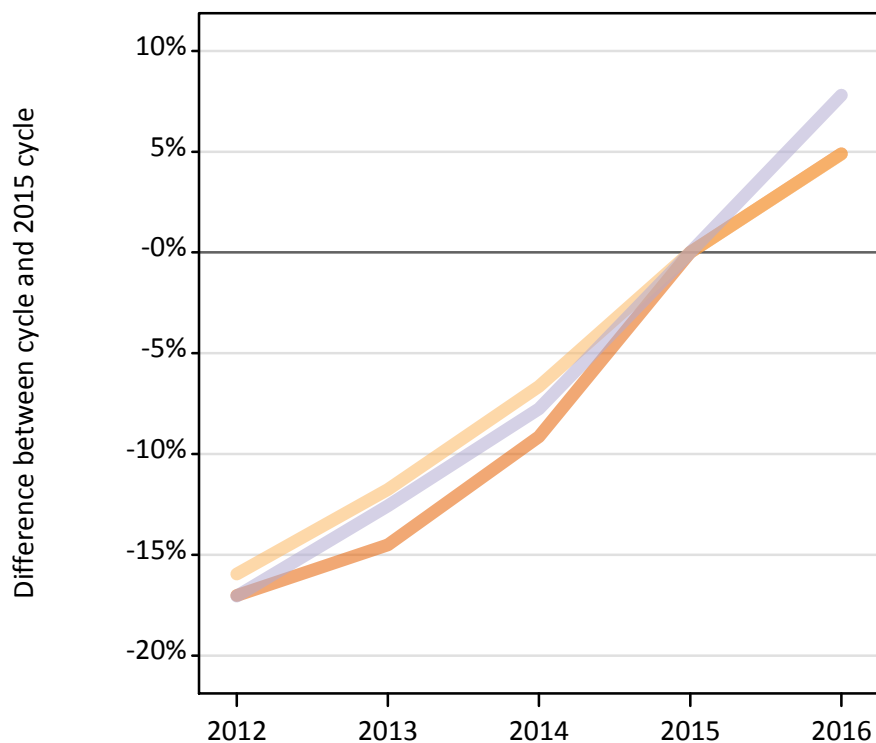
Difference between cycle and 2015 cycle

Domicile of applicant and tariff group of provider		2012	2013	2014	2015	2016
Wales	1. Lower tariff	7%	1%	1%	0%	-1%
	2. Medium tariff	-6%	-7%	-3%	0%	-1%
	3. Higher tariff	-7%	-8%	-2%	0%	3%
	All	-1%	-4%	-1%	0%	0%

I.5.43 Applications by domicile and tariff group of provider : EU (excluding UK)

Difference between cycle and 2015 cycle

- 1. Lower tariff
- 2. Medium tariff
- 3. Higher tariff



I.5.44 Applications by domicile and tariff group of provider : EU (excluding UK)

Domicile of applicant and tariff group of provider		2012	2013	2014	2015	2016
EU (excluding UK)	1. Lower tariff	44,440	45,790	48,660	53,550	56,180
	2. Medium tariff	50,310	52,820	55,880	59,860	62,780
	3. Higher tariff	83,830	88,370	93,230	101,070	108,960
	All	178,580	186,980	197,770	214,490	227,920

I.5.45 Applications by domicile and tariff group of provider : EU (excluding UK)

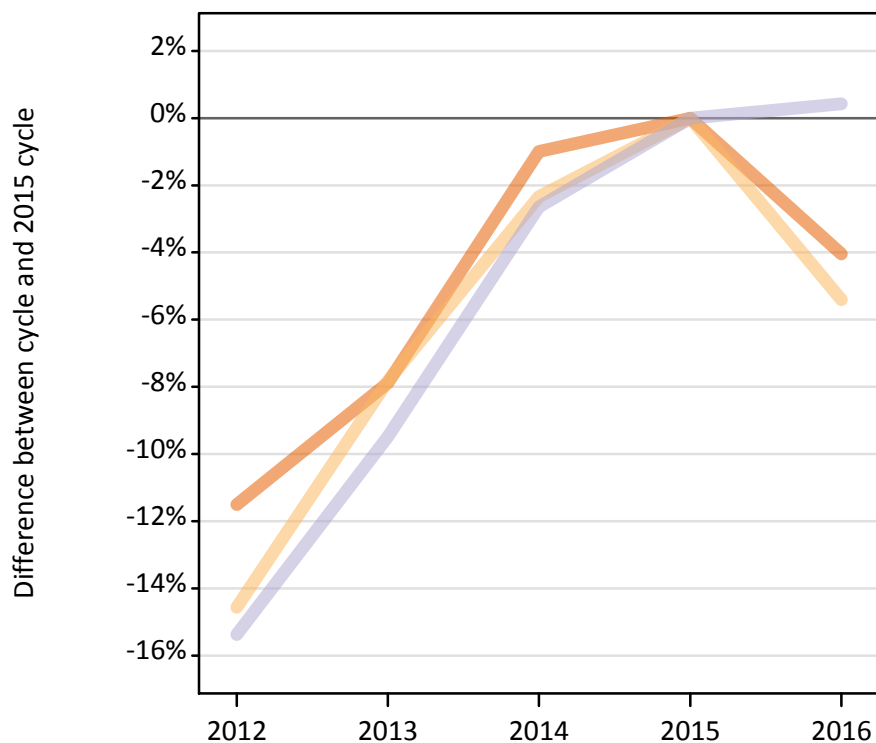
Difference between cycle and 2015 cycle

Domicile of applicant and tariff group of provider		2012	2013	2014	2015	2016
EU (excluding UK)	1. Lower tariff	-17%	-15%	-9%	0%	5%
	2. Medium tariff	-16%	-12%	-7%	0%	5%
	3. Higher tariff	-17%	-13%	-8%	0%	8%
	All	-17%	-13%	-8%	0%	6%

I.5.46 Applications by domicile and tariff group of provider : Not EU

Difference between cycle and 2015 cycle

- 1. Lower tariff
- 2. Medium tariff
- 3. Higher tariff



I.5.47 Applications by domicile and tariff group of provider : Not EU

Domicile of applicant and tariff group of provider		2012	2013	2014	2015	2016
Not EU	1. Lower tariff	38,890	40,480	43,510	43,940	42,170
	2. Medium tariff	72,200	77,900	82,530	84,510	79,940
	3. Higher tariff	153,160	163,810	176,200	180,990	181,760
	All	264,250	282,190	302,240	309,440	303,870

I.5.48 Applications by domicile and tariff group of provider : Not EU

Difference between cycle and 2015 cycle

Domicile of applicant and tariff group of provider		2012	2013	2014	2015	2016
Not EU	1. Lower tariff	-12%	-8%	-1%	0%	-4%
	2. Medium tariff	-15%	-8%	-2%	0%	-5%
	3. Higher tariff	-15%	-9%	-3%	0%	0%
	All	-15%	-9%	-2%	0%	-2%

I.5.49 Technical notes and definitions

Applicants have been able to submit applications for all 2016 courses since early September.

People who submit their applications to UCAS by the January deadline are considered 'on time' applicants for the large majority of courses offered through UCAS. Some art and design courses have a later deadline of 24 March. By definition all main scheme applications have been received by the 30 June deadline.

Counts of the number of applicants reported have been rounded to the nearest 10 applicants, this may result in instances where totals do not equal the sum of the components. Proportional changes have been rounded to the nearest whole percentage point.

Age

This statistical release uses country-specific age definitions which align with the cut off points for school/college cohorts within the different administrations of the UK. For England and Wales ages are defined on the 31 August, for Northern Ireland on the 1 July and for Scotland on the 28 February the following year. Defining ages in this way matches the assignment of children to school cohorts. For applicants outside of the UK the cohort cut off for England and Wales has been used.

Applicant

A person who has made an application in the UCAS system during the cycle reported (including applications for deferred entry). Records of prior acceptance (RPAs) are excluded.

Application

An application to a course at a provider made by an applicant in the UCAS main scheme. Applicants may make up to five main scheme applications.

Country of provider

An applicant may be counted once for each provider country they have applied to in the main scheme. If an applicant has applied to providers in multiple countries then the applicant is counted once within each country of provider applied to.

This statistical release excludes a small number of applications to a provider based in the EU.

Domicile

Declared area of permanent residence. The Channel Islands and the Isle of Man have been assigned as 'Not EU'.

First time applicant

An applicant that did not apply to the UCAS scheme in the previous cycle.

Main scheme

The main UCAS application scheme through which up to five providers/courses can be applied to. This opens in September and closes to new applications on 30 June the following year.

Reapplicant

An applicant that applied to the UCAS scheme in the previous cycle.

Subject group

The JACS3 classification used to classify courses into subject groups.

The values reported against subject groups in the 2015 cycle have been restated from those which appeared in the equivalent report in 2015.

Tariff group of provider

Providers are grouped as higher, medium or lower tariff based on their average levels of attainment of their accepted applicants (summarised through UCAS Tariff points) in recent cycles. Each group of providers accounted for around a third of all UK 18 year old acceptances in recent cycles.