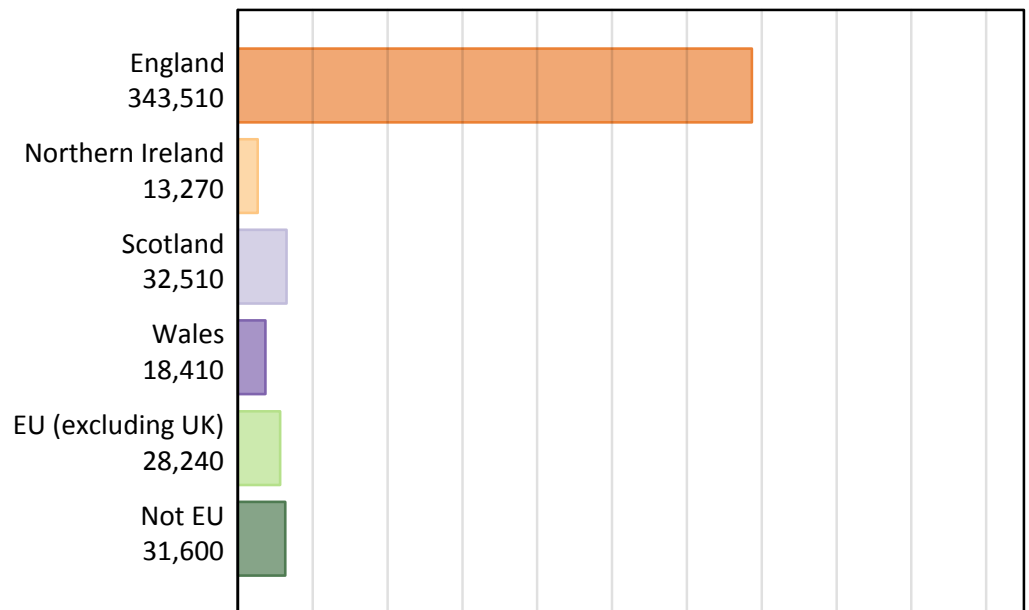


Analysis at 00:05 on Monday 22 August 2016 (4 days after A level results day)

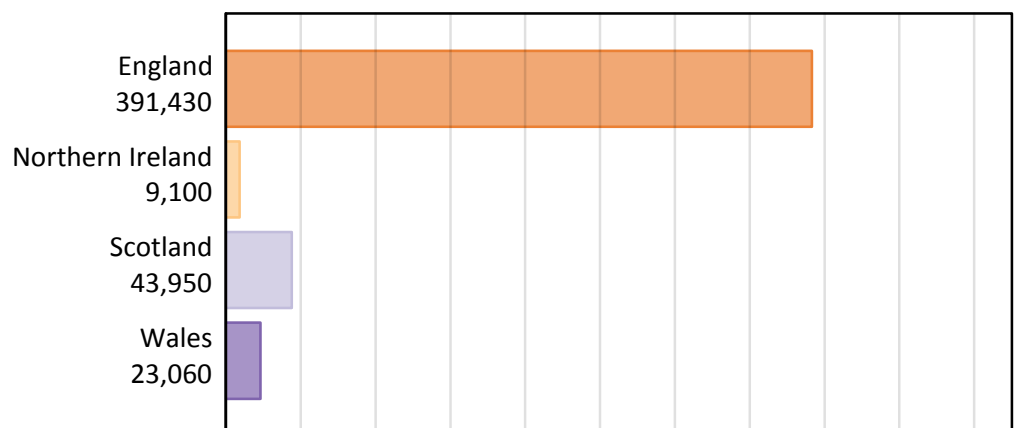
## B.1 Placed applicants by country of provider and domicile, 2016 cycle

Domicile of applicant	Country of provider				
	England	Northern Ireland	Scotland	Wales	UK
England	328,160	290	4,770	10,290	343,510
Northern Ireland	3,740	8,240	1,120	170	13,270
Scotland	1,590	20	30,870	40	32,510
Wales	7,970	10	130	10,300	18,410
EU (excluding UK)	22,070	340	4,550	1,280	28,240
Not EU	27,900	200	2,520	980	31,600
All	391,430	9,100	43,950	23,060	467,530

## B.2 Placed applicants by domicile group

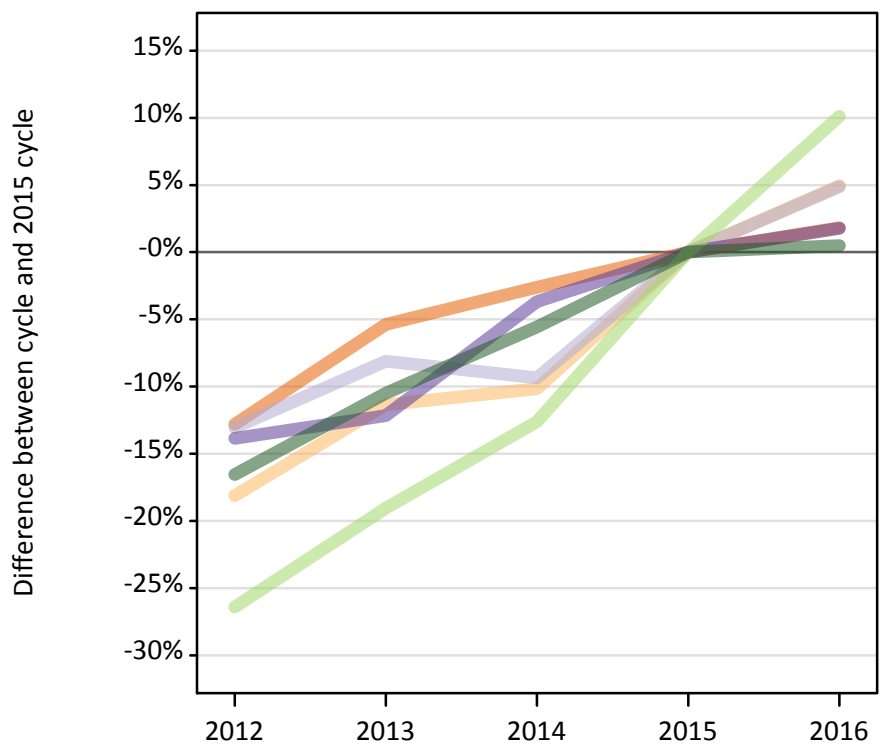


## B.3 Placed applicants by country of provider



#### B.4 Placed applicants at 4 days after A level results day: providers in England

Selected applicant domiciles: difference between cycle and 2015 cycle (at 4 days after A level results day)



#### B.5 Placed applicants at 4 days after A level results day: providers in England

Placed applicants by domicile (at 4 days after A level results day)

Domicile of applicant	2012	2013	2014	2015	2016
England	281,020	304,950	313,840	322,270	328,160
Northern Ireland	2,920	3,160	3,200	3,570	3,740
Scotland	1,320	1,390	1,380	1,520	1,590
Wales	6,740	6,880	7,540	7,830	7,970
EU (excluding UK)	14,750	16,230	17,510	20,040	22,070
Not EU	23,170	24,850	26,220	27,760	27,900

#### B.6 Placed applicants at 4 days after A level results day: providers in England

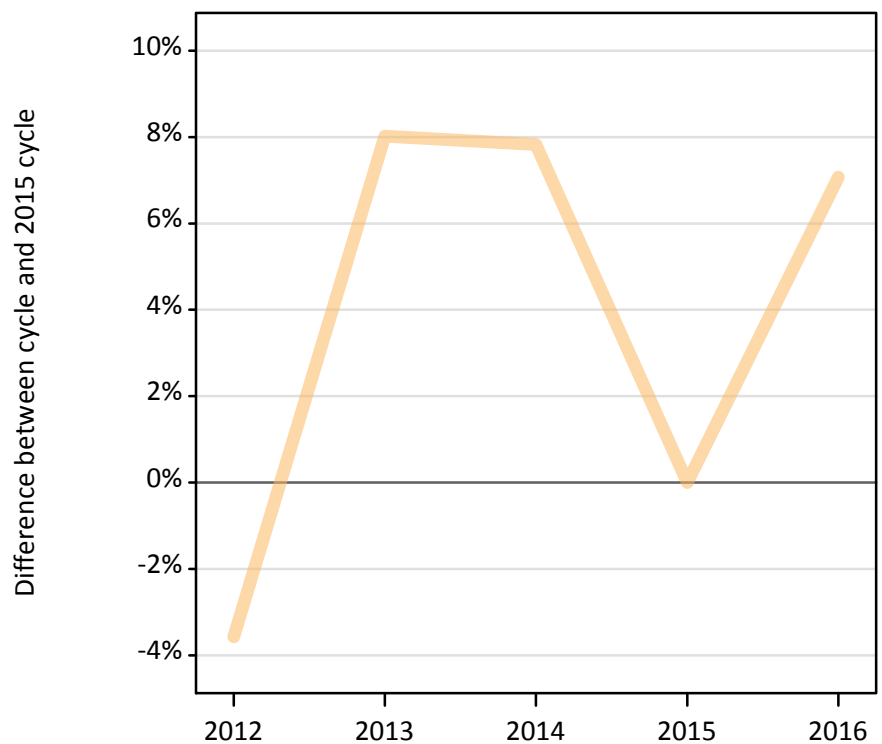
Selected applicant domiciles: difference between cycle and 2015 cycle (at 4 days after A level results day)

Domicile of applicant	2012	2013	2014	2015	2016
England	-13%	-5%	-3%	0%	2%
Northern Ireland	-18%	-11%	-10%	0%	5%
Scotland	-13%	-8%	-9%	0%	5%
Wales	-14%	-12%	-4%	0%	2%
EU (excluding UK)	-26%	-19%	-13%	0%	10%
Not EU	-17%	-10%	-6%	0%	0%

### B.7 Placed applicants at 4 days after A level results day: providers in Northern Ireland

Selected applicant domiciles: difference between cycle and 2015 cycle (at 4 days after A level results day)

— Northern Ireland



### B.8 Placed applicants at 4 days after A level results day: providers in Northern Ireland

Placed applicants by domicile (at 4 days after A level results day)

Domicile of applicant	2012	2013	2014	2015	2016
England	220	230	330	540	290
Northern Ireland	7,420	8,310	8,290	7,690	8,240
Scotland	30	10	20	20	20
Wales	0	0	10	10	10
EU (excluding UK)	410	430	460	380	340
Not EU	150	170	170	140	200

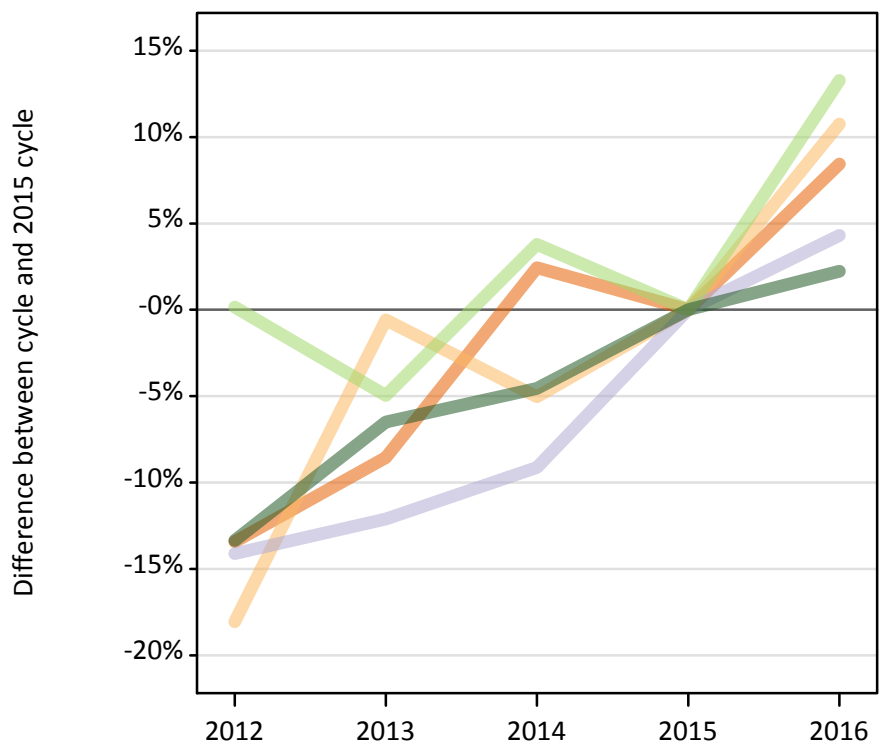
### B.9 Placed applicants at 4 days after A level results day: providers in Northern Ireland

Selected applicant domiciles: difference between cycle and 2015 cycle (at 4 days after A level results day)

Domicile of applicant	2012	2013	2014	2015	2016
Northern Ireland	-4%	8%	8%	0%	7%

### B.10 Placed applicants at 4 days after A level results day: providers in Scotland

Selected applicant domiciles: difference between cycle and 2015 cycle (at 4 days after A level results day)



### B.11 Placed applicants at 4 days after A level results day: providers in Scotland

Placed applicants by domicile (at 4 days after A level results day)

Domicile of applicant	2012	2013	2014	2015	2016
England	3,810	4,020	4,510	4,400	4,770
Northern Ireland	830	1,010	960	1,010	1,120
Scotland	25,420	26,010	26,890	29,590	30,870
Wales	110	100	100	110	130
EU (excluding UK)	4,020	3,810	4,170	4,010	4,550
Not EU	2,130	2,300	2,350	2,460	2,520

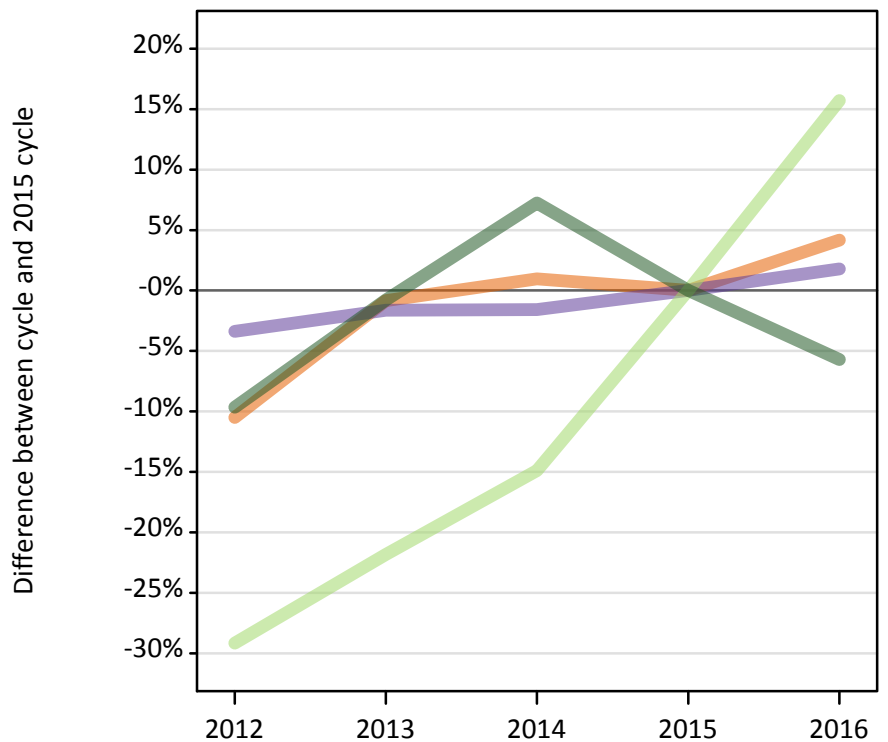
### B.12 Placed applicants at 4 days after A level results day: providers in Scotland

Selected applicant domiciles: difference between cycle and 2015 cycle (at 4 days after A level results day)

Domicile of applicant	2012	2013	2014	2015	2016
England	-13%	-9%	2%	0%	8%
Northern Ireland	-18%	-1%	-5%	0%	11%
Scotland	-14%	-12%	-9%	0%	4%
EU (excluding UK)	0%	-5%	4%	0%	13%
Not EU	-13%	-6%	-5%	0%	2%

### B.13 Placed applicants at 4 days after A level results day: providers in Wales

Selected applicant domiciles: difference between cycle and 2015 cycle (at 4 days after A level results day)



### B.14 Placed applicants at 4 days after A level results day: providers in Wales

Placed applicants by domicile (at 4 days after A level results day)

Domicile of applicant	2012	2013	2014	2015	2016
England	8,840	9,800	9,970	9,880	10,290
Northern Ireland	130	150	150	150	170
Scotland	40	60	60	40	40
Wales	9,780	9,960	9,960	10,120	10,300
EU (excluding UK)	790	870	940	1,110	1,280
Not EU	940	1,030	1,110	1,040	980

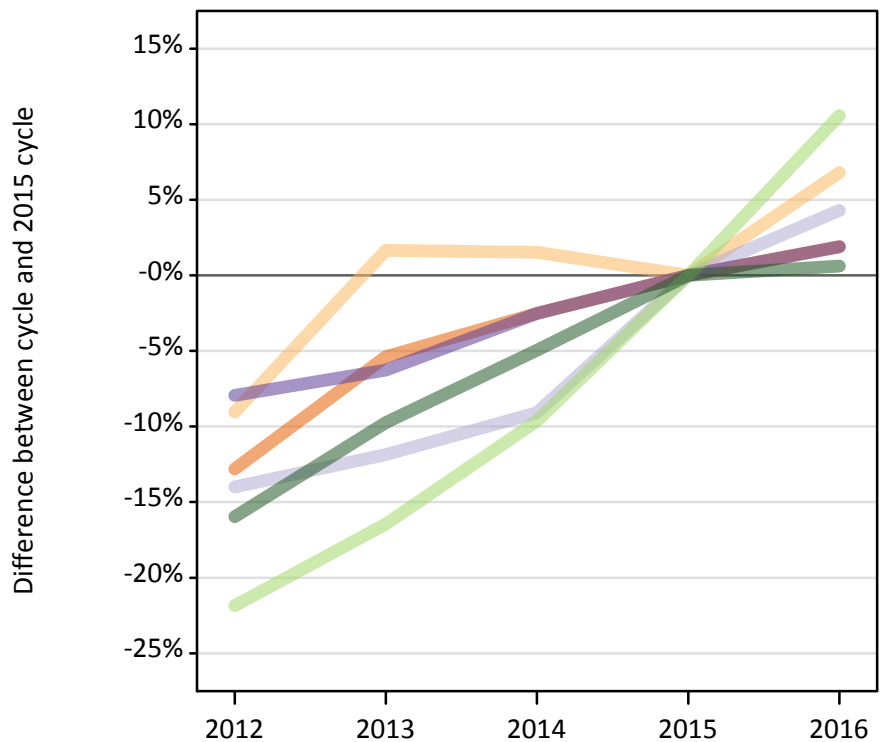
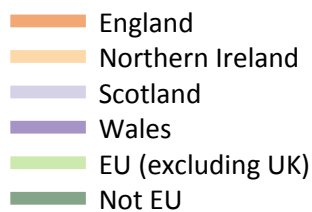
### B.15 Placed applicants at 4 days after A level results day: providers in Wales

Selected applicant domiciles: difference between cycle and 2015 cycle (at 4 days after A level results day)

Domicile of applicant	2012	2013	2014	2015	2016
England	-10%	-1%	1%	0%	4%
Wales	-3%	-2%	-2%	0%	2%
EU (excluding UK)	-29%	-22%	-15%	0%	16%
Not EU	-10%	-1%	7%	0%	-6%

### B.16 Placed applicants at 4 days after A level results day: providers in the UK

Selected applicant domiciles: difference between cycle and 2015 cycle (at 4 days after A level results day)



### B.17 Placed applicants at 4 days after A level results day: providers in the UK

Placed applicants by domicile (at 4 days after A level results day)

Domicile of applicant	2012	2013	2014	2015	2016
England	293,890	319,000	328,640	337,090	343,510
Northern Ireland	11,300	12,630	12,610	12,420	13,270
Scotland	26,810	27,480	28,340	31,170	32,510
Wales	16,630	16,930	17,610	18,070	18,410
EU (excluding UK)	19,960	21,340	23,080	25,540	28,240
Not EU	26,390	28,350	29,850	31,400	31,600

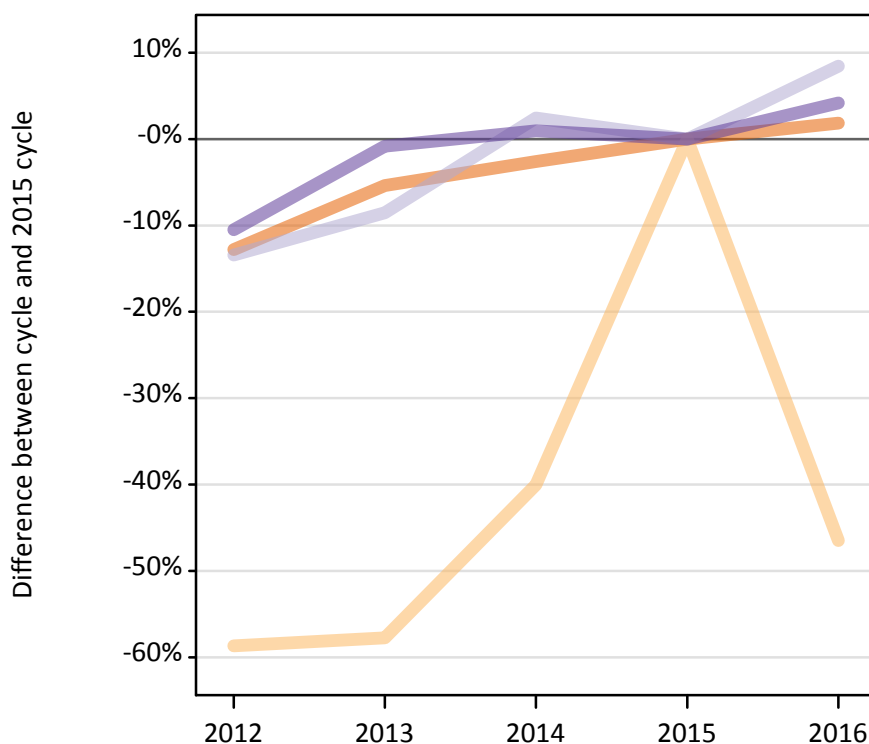
### B.18 Placed applicants at 4 days after A level results day: providers in the UK

Selected applicant domiciles: difference between cycle and 2015 cycle (at 4 days after A level results day)

Domicile of applicant	2012	2013	2014	2015	2016
England	-13%	-5%	-3%	0%	2%
Northern Ireland	-9%	2%	2%	0%	7%
Scotland	-14%	-12%	-9%	0%	4%
Wales	-8%	-6%	-3%	0%	2%
EU (excluding UK)	-22%	-16%	-10%	0%	11%
Not EU	-16%	-10%	-5%	0%	1%

### B.19 Placed applicants at 4 days after A level results day: domiciled in England

Selected provider countries: difference between cycle and 2015 cycle (at 4 days after A level results day)



### B.20 Placed applicants at 4 days after A level results day: domiciled in England

Placed applicants by provider country (at 4 days after A level results day)

Country of provider	2012	2013	2014	2015	2016
England	281,020	304,950	313,840	322,270	328,160
Northern Ireland	220	230	330	540	290
Scotland	3,810	4,020	4,510	4,400	4,770
Wales	8,840	9,800	9,970	9,880	10,290

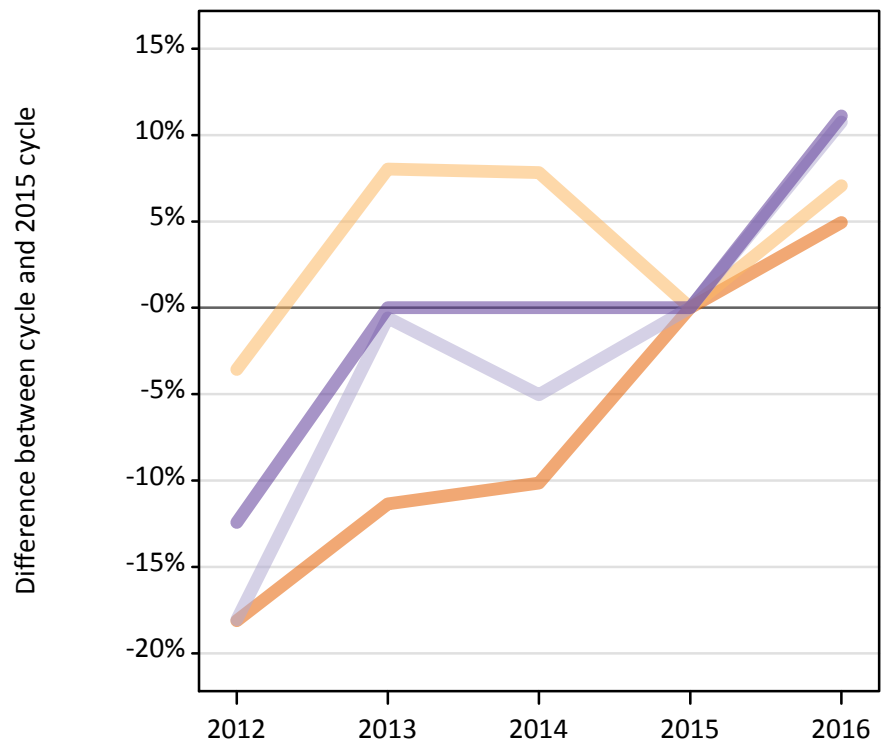
### B.21 Placed applicants at 4 days after A level results day: domiciled in England

Selected provider countries: difference between cycle and 2015 cycle (at 4 days after A level results day)

Country of provider	2012	2013	2014	2015	2016
England	-13%	-5%	-3%	0%	2%
Northern Ireland	-59%	-58%	-40%	0%	-46%
Scotland	-13%	-9%	2%	0%	8%
Wales	-10%	-1%	1%	0%	4%

### B.22 Placed applicants at 4 days after A level results day: domiciled in Northern Ireland

Selected provider countries: difference between cycle and 2015 cycle (at 4 days after A level results day)



### B.23 Placed applicants at 4 days after A level results day: domiciled in Northern Ireland

Placed applicants by provider country (at 4 days after A level results day)

Country of provider	2012	2013	2014	2015	2016
England	2,920	3,160	3,200	3,570	3,740
Northern Ireland	7,420	8,310	8,290	7,690	8,240
Scotland	830	1,010	960	1,010	1,120
Wales	130	150	150	150	170

### B.24 Placed applicants at 4 days after A level results day: domiciled in Northern Ireland

Selected provider countries: difference between cycle and 2015 cycle (at 4 days after A level results day)

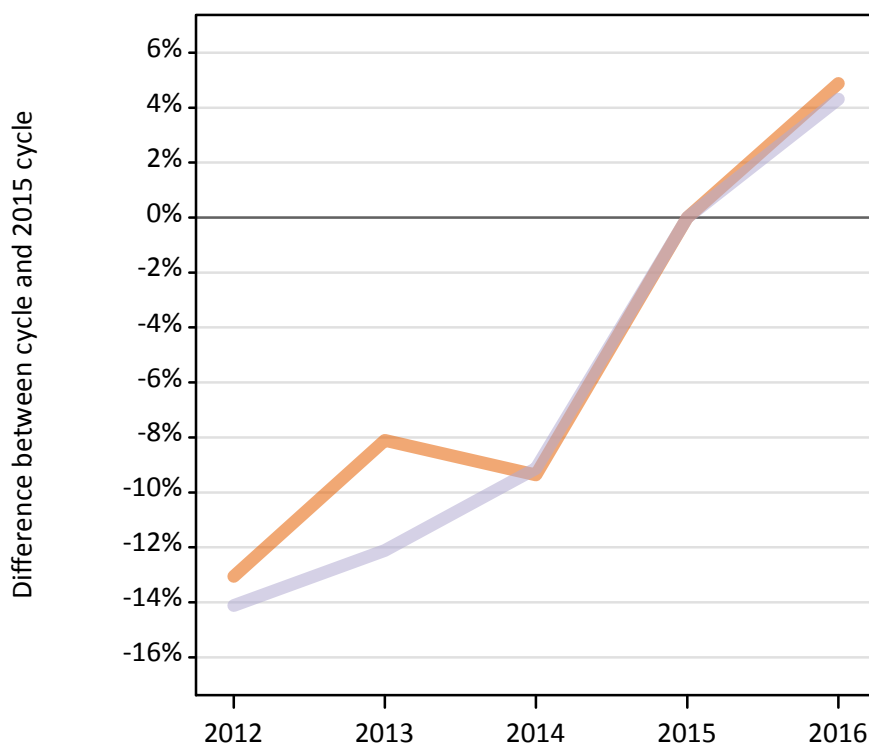
Country of provider	2012	2013	2014	2015	2016
England	-18%	-11%	-10%	0%	5%
Northern Ireland	-4%	8%	8%	0%	7%
Scotland	-18%	-1%	-5%	0%	11%
Wales	-12%	0%	0%	0%	11%



### B.25 Placed applicants at 4 days after A level results day: domiciled in Scotland

Selected provider countries: difference between cycle and 2015 cycle (at 4 days after A level results day)

England  
Scotland



### B.26 Placed applicants at 4 days after A level results day: domiciled in Scotland

Placed applicants by provider country (at 4 days after A level results day)

Country of provider	2012	2013	2014	2015	2016
England	1,320	1,390	1,380	1,520	1,590
Northern Ireland	30	10	20	20	20
Scotland	25,420	26,010	26,890	29,590	30,870
Wales	40	60	60	40	40

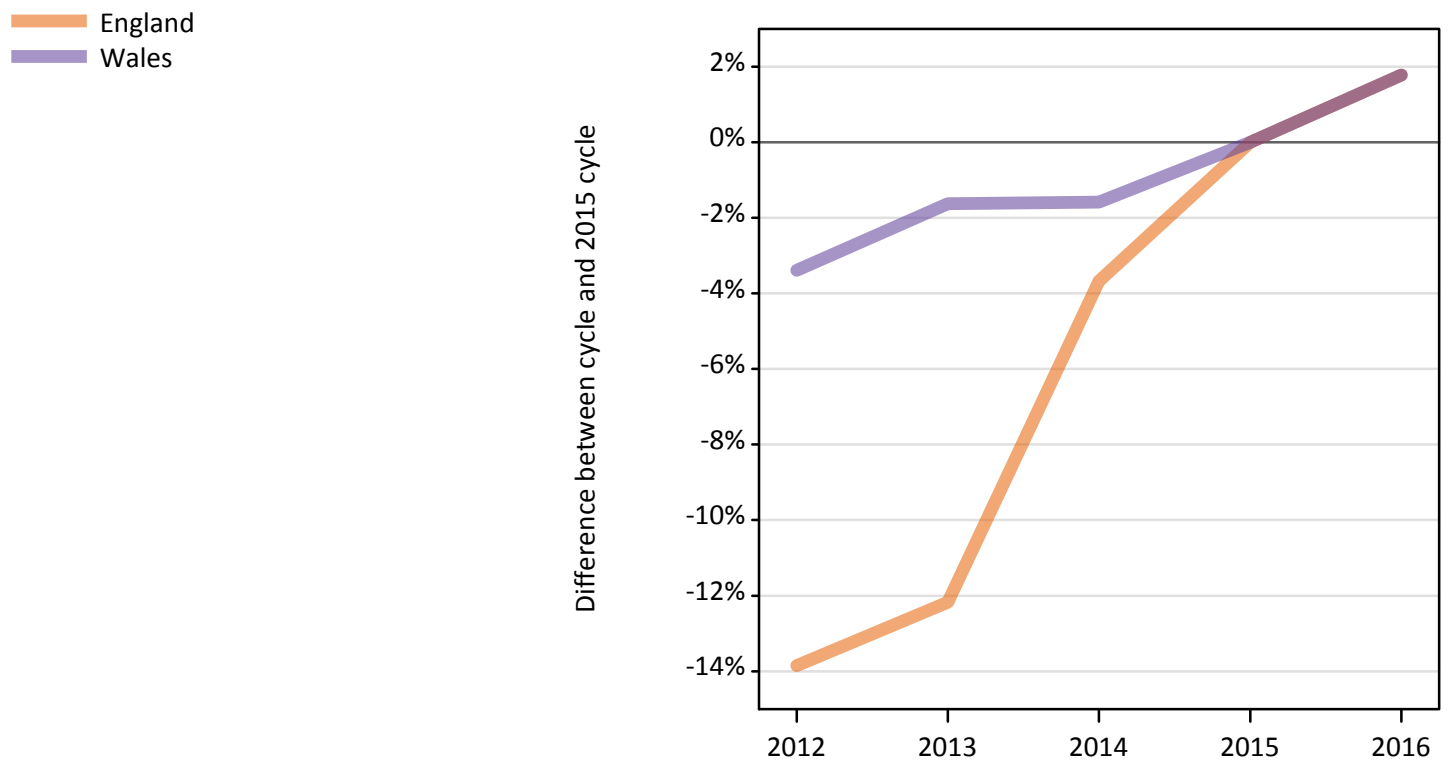
### B.27 Placed applicants at 4 days after A level results day: domiciled in Scotland

Selected provider countries: difference between cycle and 2015 cycle (at 4 days after A level results day)

Country of provider	2012	2013	2014	2015	2016
England	-13%	-8%	-9%	0%	5%
Scotland	-14%	-12%	-9%	0%	4%

### B.28 Placed applicants at 4 days after A level results day: domiciled in Wales

Selected provider countries: difference between cycle and 2015 cycle (at 4 days after A level results day)



### B.29 Placed applicants at 4 days after A level results day: domiciled in Wales

Placed applicants by provider country (at 4 days after A level results day)

Country of provider	2012	2013	2014	2015	2016
England	6,740	6,880	7,540	7,830	7,970
Northern Ireland	0	0	10	10	10
Scotland	110	100	100	110	130
Wales	9,780	9,960	9,960	10,120	10,300

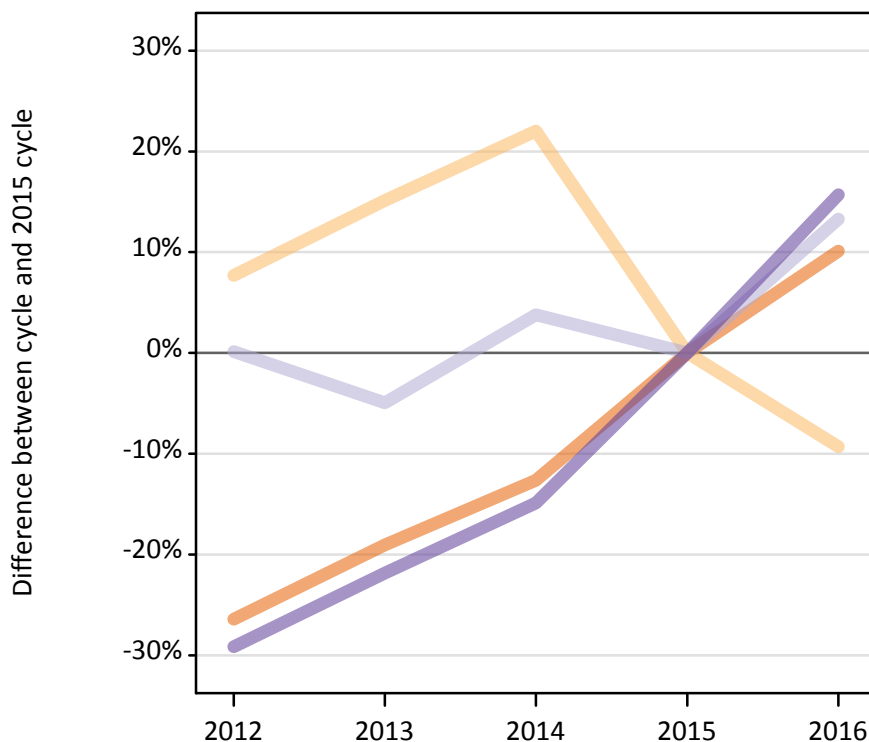
### B.30 Placed applicants at 4 days after A level results day: domiciled in Wales

Selected provider countries: difference between cycle and 2015 cycle (at 4 days after A level results day)

Country of provider	2012	2013	2014	2015	2016
England	-14%	-12%	-4%	0%	2%
Wales	-3%	-2%	-2%	0%	2%

### B.31 Placed applicants at 4 days after A level results day: domiciled in EU (excluding UK)

Selected provider countries: difference between cycle and 2015 cycle (at 4 days after A level results day)



### B.32 Placed applicants at 4 days after A level results day: domiciled in EU (excluding UK)

Placed applicants by provider country (at 4 days after A level results day)

Country of provider	2012	2013	2014	2015	2016
England	14,750	16,230	17,510	20,040	22,070
Northern Ireland	410	430	460	380	340
Scotland	4,020	3,810	4,170	4,010	4,550
Wales	790	870	940	1,110	1,280

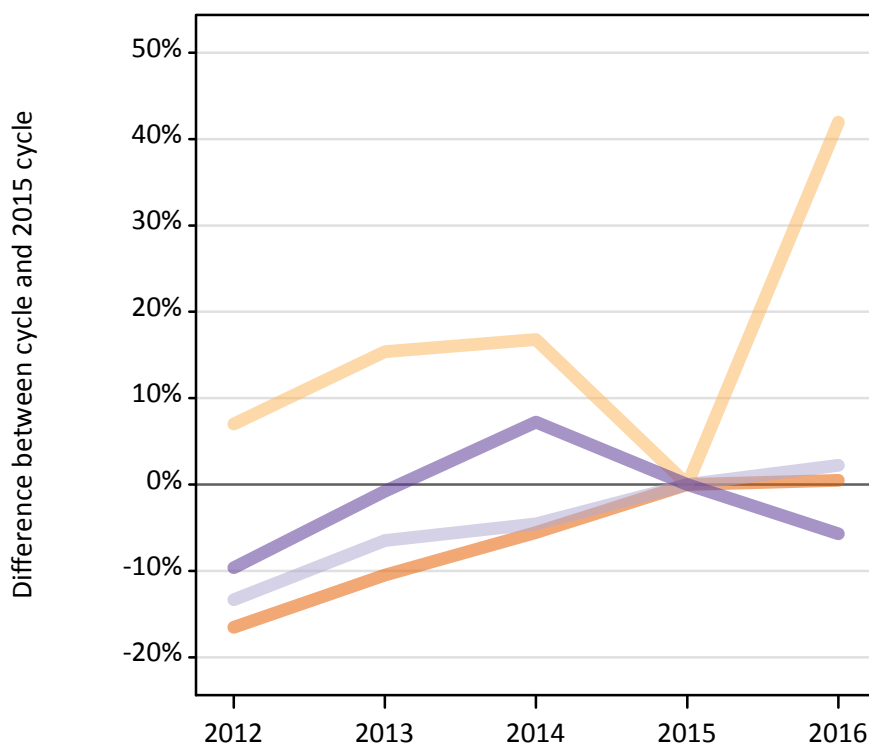
### B.33 Placed applicants at 4 days after A level results day: domiciled in EU (excluding UK)

Selected provider countries: difference between cycle and 2015 cycle (at 4 days after A level results day)

Country of provider	2012	2013	2014	2015	2016
England	-26%	-19%	-13%	0%	10%
Northern Ireland	8%	15%	22%	0%	-9%
Scotland	0%	-5%	4%	0%	13%
Wales	-29%	-22%	-15%	0%	16%

### B.34 Placed applicants at 4 days after A level results day: domiciled in Not EU

Selected provider countries: difference between cycle and 2015 cycle (at 4 days after A level results day)



### B.35 Placed applicants at 4 days after A level results day: domiciled in Not EU

Placed applicants by provider country (at 4 days after A level results day)

Country of provider	2012	2013	2014	2015	2016
England	23,170	24,850	26,220	27,760	27,900
Northern Ireland	150	170	170	140	200
Scotland	2,130	2,300	2,350	2,460	2,520
Wales	940	1,030	1,110	1,040	980

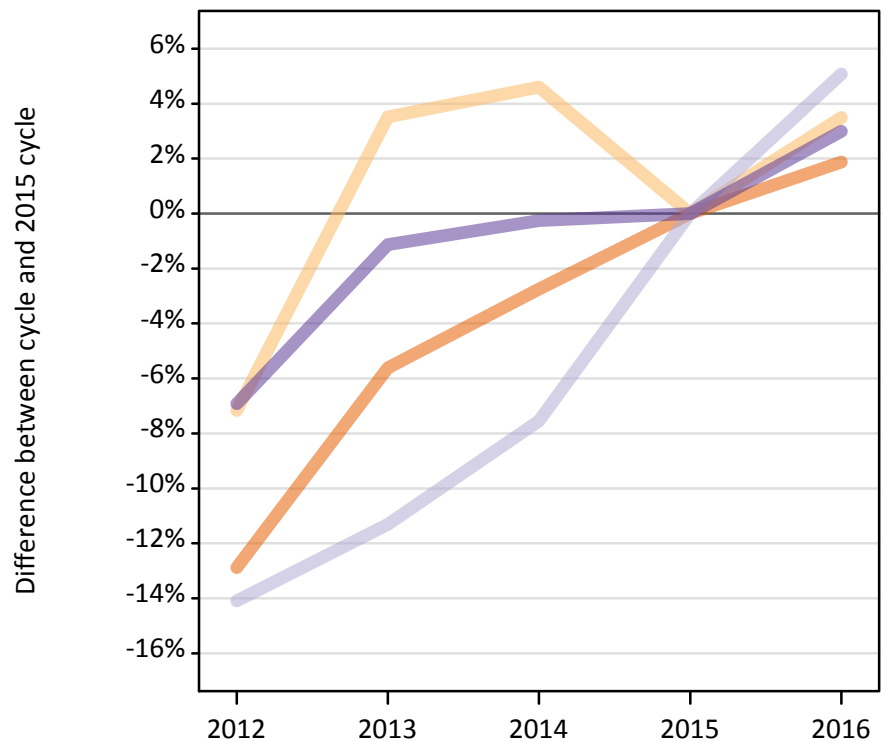
### B.36 Placed applicants at 4 days after A level results day: domiciled in Not EU

Selected provider countries: difference between cycle and 2015 cycle (at 4 days after A level results day)

Country of provider	2012	2013	2014	2015	2016
England	-17%	-10%	-6%	0%	0%
Northern Ireland	7%	15%	17%	0%	42%
Scotland	-13%	-6%	-5%	0%	2%
Wales	-10%	-1%	7%	0%	-6%

### B.37 Placed applicants at 4 days after A level results day: domiciled in UK

Selected provider countries: difference between cycle and 2015 cycle (at 4 days after A level results day)



### B.38 Placed applicants at 4 days after A level results day: domiciled in UK

Placed applicants by provider country (at 4 days after A level results day)

Country of provider	2012	2013	2014	2015	2016
England	292,000	316,380	325,960	335,180	341,460
Northern Ireland	7,670	8,550	8,640	8,260	8,550
Scotland	30,160	31,140	32,460	35,110	36,890
Wales	18,800	19,970	20,150	20,200	20,800

### B.39 Placed applicants at 4 days after A level results day: domiciled in UK

Selected provider countries: difference between cycle and 2015 cycle (at 4 days after A level results day)

Country of provider	2012	2013	2014	2015	2016
England	-13%	-6%	-3%	0%	2%
Northern Ireland	-7%	4%	5%	0%	3%
Scotland	-14%	-11%	-8%	0%	5%
Wales	-7%	-1%	-0%	0%	3%