

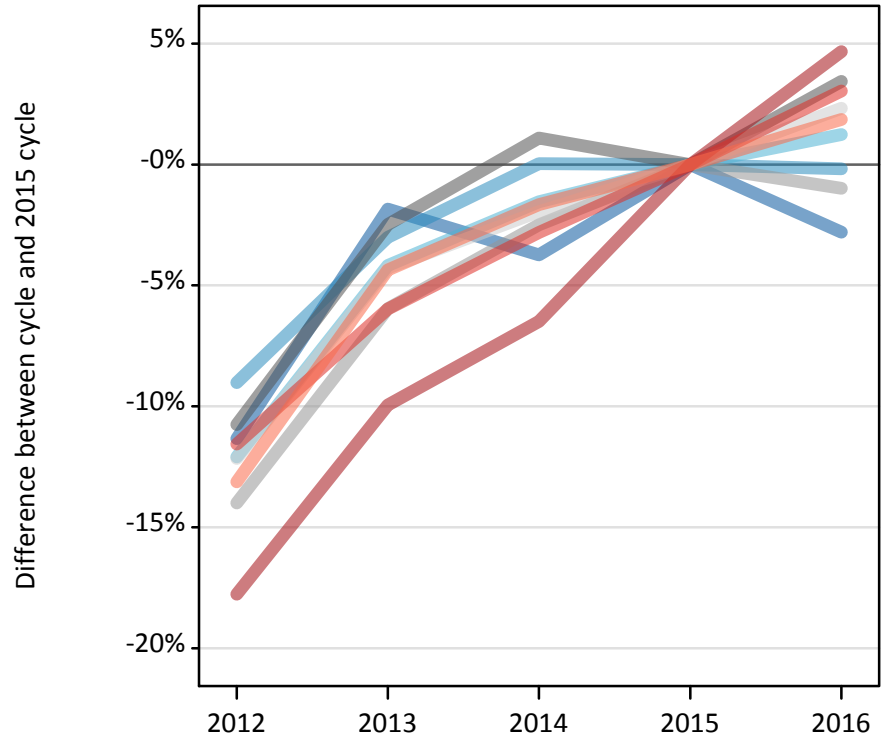
Daily Clearing Analysis: Region

Analysis at 00:05 on Monday 22 August 2016 (4 days after A level results day)

R.1 Placed applicants by region of domicile: 4 days after A level results day

Placed applicants: change relative to 2015 cycle totals

- North East
- North West
- Yorkshire and The Humber
- East Midlands
- West Midlands
- East of England
- London
- South East
- South West



R.2 Placed applicants by region of domicile: 4 days after A level results day

Applicant Status	Domicile	2012	2013	2014	2015	2016
Placed	North East	13,130	14,540	14,260	14,810	14,400
	North West	40,710	43,410	44,760	44,750	44,670
	Yorkshire and The Humber	27,400	29,870	30,690	31,170	31,560
	East Midlands	23,120	25,260	26,190	25,910	26,800
	West Midlands	31,210	34,120	35,380	36,280	35,930
	East of England	30,890	33,660	34,480	35,170	35,990
	London	51,270	56,140	58,290	62,340	65,250
	South East	48,900	51,990	53,740	55,290	56,970
	South West	27,260	30,010	30,860	31,380	31,960
	(England total)	293,890	319,000	328,640	337,090	343,510
	Scotland	26,810	27,480	28,340	31,170	32,510
	Northern Ireland	11,300	12,630	12,610	12,420	13,270
	Wales	16,630	16,930	17,610	18,070	18,410
	UK	348,630	376,040	387,200	398,750	407,700

R.3 Placed applicants by region of domicile: 4 days after A level results day

Placed applicants: change relative to 2015 cycle totals

Applicant Status	Domicile	2012	2013	2014	2015	2016
Placed	North East	-11%	-2%	-4%	0%	-3%
	North West	-9%	-3%	0%	0%	-0%
	Yorkshire and The Humber	-12%	-4%	-2%	0%	1%
	East Midlands	-11%	-2%	1%	0%	3%
	West Midlands	-14%	-6%	-2%	0%	-1%
	East of England	-12%	-4%	-2%	0%	2%
	London	-18%	-10%	-6%	0%	5%
	South East	-12%	-6%	-3%	0%	3%
	South West	-13%	-4%	-2%	0%	2%
	(England total)	-13%	-5%	-3%	0%	2%
	Scotland	-14%	-12%	-9%	0%	4%
	Northern Ireland	-9%	2%	2%	0%	7%
	Wales	-8%	-6%	-3%	0%	2%
	UK	-13%	-6%	-3%	0%	2%

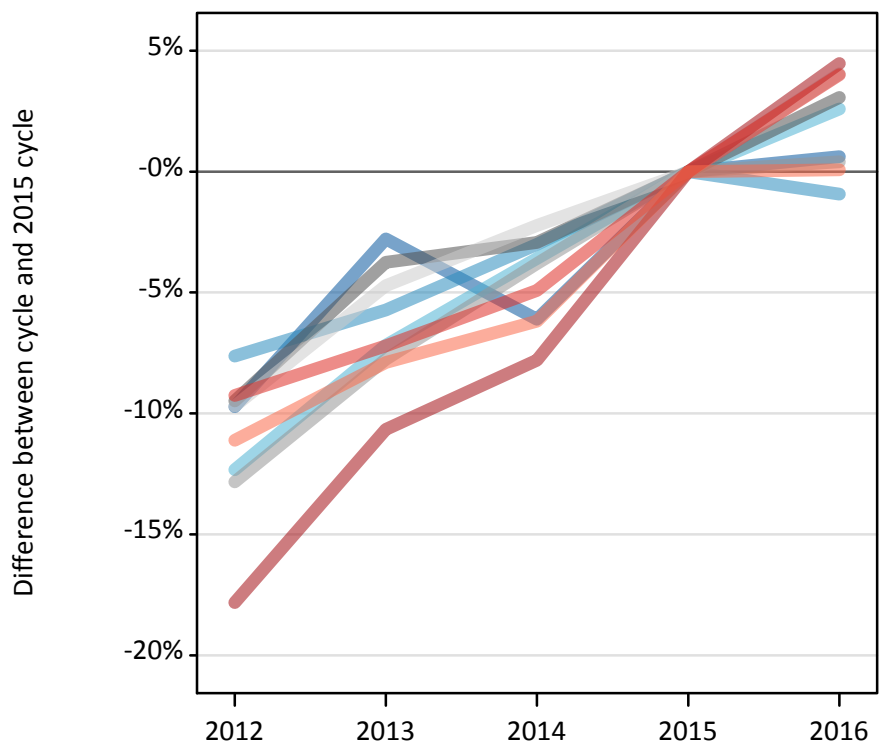
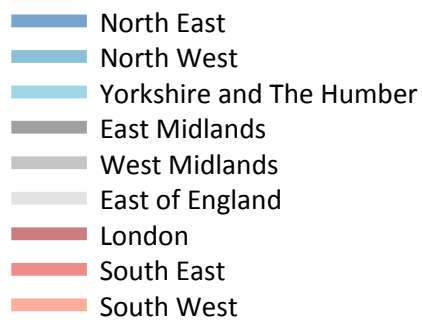
R.4 Placed applicants by region of domicile: 4 days after A level results day

Placed applicants: absolute change relative to 2015 cycle totals

Applicant Status	Domicile	2012	2013	2014	2015	2016
Placed	North East	-1,680	-270	-550	0	-420
	North West	-4,040	-1,340	10	0	-80
	Yorkshire and The Humber	-3,770	-1,300	-480	0	390
	East Midlands	-2,790	-640	280	0	890
	West Midlands	-5,080	-2,160	-900	0	-360
	East of England	-4,280	-1,500	-690	0	820
	London	-11,070	-6,200	-4,050	0	2,910
	South East	-6,390	-3,300	-1,550	0	1,680
	South West	-4,120	-1,370	-520	0	580
	(England total)	-43,200	-18,100	-8,450	0	6,420
	Scotland	-4,360	-3,690	-2,830	0	1,340
	Northern Ireland	-1,120	210	190	0	850
	Wales	-1,430	-1,130	-450	0	340
	UK	-50,120	-22,710	-11,550	0	8,950

R.5 Placed 18 year old applicants by region of domicile: 4 days after A level results day

Placed 18 year old applicants: change relative to 2015 cycle totals



R.6 Placed 18 year old applicants by region of domicile: 4 days after A level results day

Applicant Status	Domicile	2012	2013	2014	2015	2016
Placed	North East	7,230	7,790	7,520	8,010	8,060
	North West	23,880	24,370	25,070	25,850	25,610
	Yorkshire and The Humber	15,740	16,670	17,310	17,960	18,420
	East Midlands	13,550	14,410	14,530	14,970	15,430
	West Midlands	17,640	18,670	19,470	20,240	20,320
	East of England	19,130	20,180	20,710	21,180	22,040
	London	26,920	29,260	30,200	32,750	34,220
	South East	29,580	30,250	31,000	32,600	33,900
	South West	14,920	15,460	15,750	16,790	16,800
	(England total)	168,600	177,060	181,560	190,350	194,810
	Scotland	13,840	13,960	14,210	14,310	14,550
	Northern Ireland	7,270	7,880	7,670	7,590	7,860
	Wales	9,300	9,300	9,610	10,080	10,280
	UK	199,010	208,210	213,040	222,320	227,500

R.7 Placed 18 year old applicants by region of domicile: 4 days after A level results day

Placed 18 year old applicants: change relative to 2015 cycle totals

Applicant Status	Domicile	2012	2013	2014	2015	2016
Placed	North East	-10%	-3%	-6%	0%	1%
	North West	-8%	-6%	-3%	0%	-1%
	Yorkshire and The Humber	-12%	-7%	-4%	0%	3%
	East Midlands	-9%	-4%	-3%	0%	3%
	West Midlands	-13%	-8%	-4%	0%	0%
	East of England	-10%	-5%	-2%	0%	4%
	London	-18%	-11%	-8%	0%	4%
	South East	-9%	-7%	-5%	0%	4%
	South West	-11%	-8%	-6%	0%	0%
	(England total)	-11%	-7%	-5%	0%	2%
	Scotland	-3%	-2%	-1%	0%	2%
	Northern Ireland	-4%	4%	1%	0%	4%
	Wales	-8%	-8%	-5%	0%	2%
	UK	-10%	-6%	-4%	0%	2%

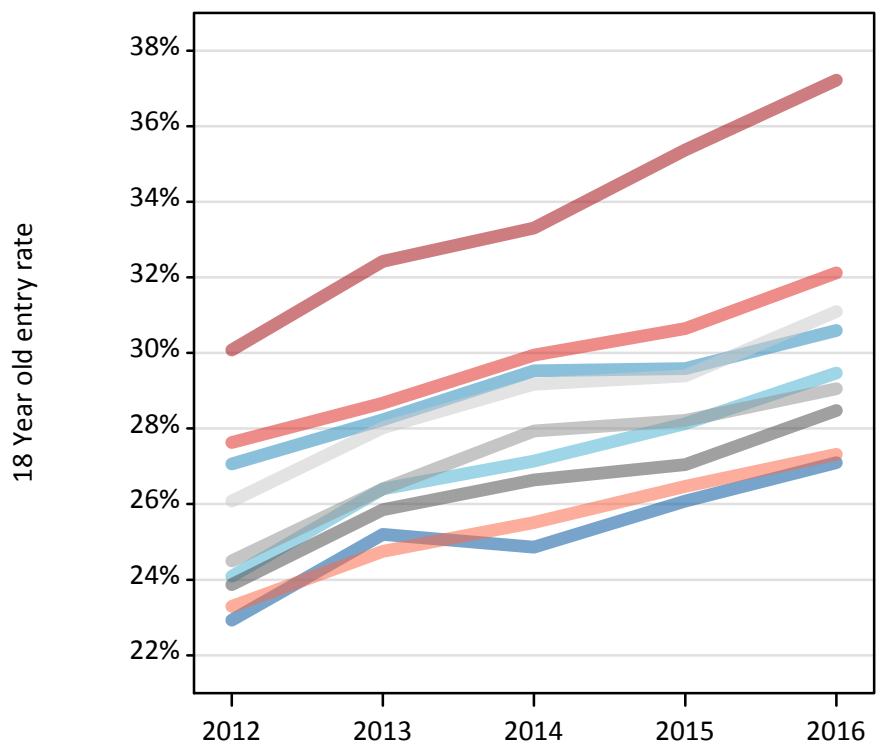
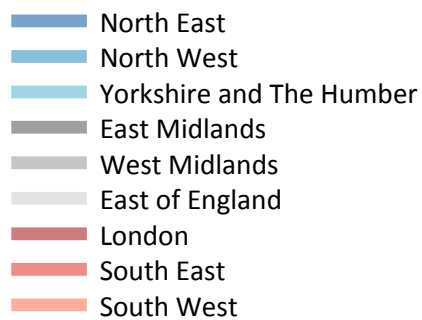
R.8 Placed 18 year old applicants by region of domicile: 4 days after A level results day

Placed 18 year old applicants: absolute change relative to 2015 cycle totals

Applicant Status	Domicile	2012	2013	2014	2015	2016
Placed	North East	-780	-220	-490	0	50
	North West	-1,970	-1,480	-780	0	-240
	Yorkshire and The Humber	-2,210	-1,290	-640	0	470
	East Midlands	-1,420	-560	-440	0	460
	West Midlands	-2,600	-1,570	-770	0	80
	East of England	-2,050	-1,000	-470	0	860
	London	-5,840	-3,490	-2,550	0	1,460
	South East	-3,020	-2,350	-1,600	0	1,310
	South West	-1,860	-1,320	-1,040	0	10
	(England total)	-21,750	-13,290	-8,790	0	4,460
	Scotland	-470	-350	-100	0	250
	Northern Ireland	-320	290	80	0	270
	Wales	-780	-780	-470	0	210
	UK	-23,320	-14,120	-9,280	0	5,180

R.9 Placed 18 year old applicants by region of domicile: 4 days after A level results day

Placed 18 year old applicants: entry rate



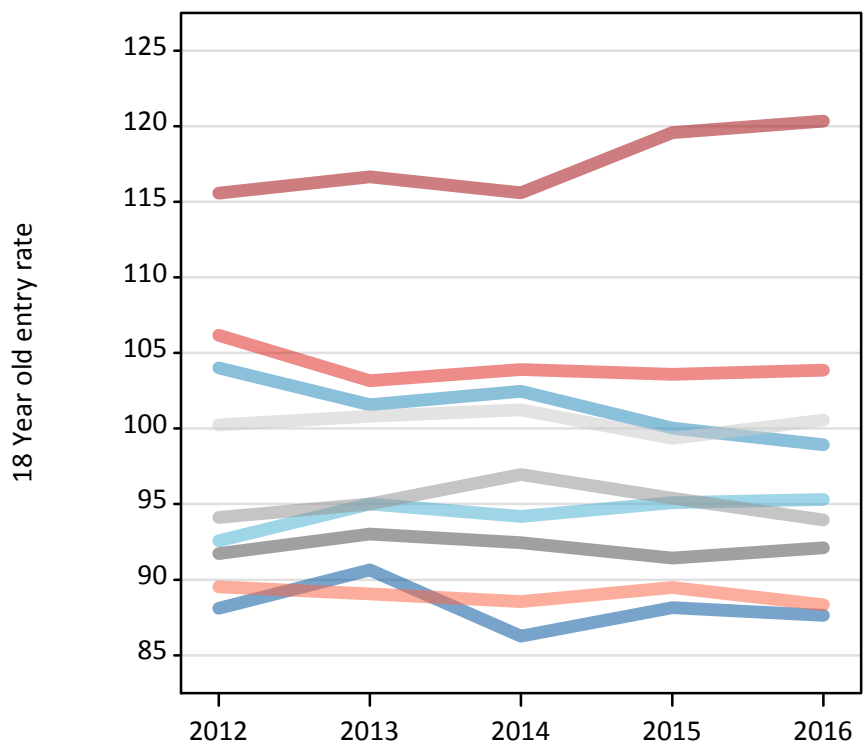
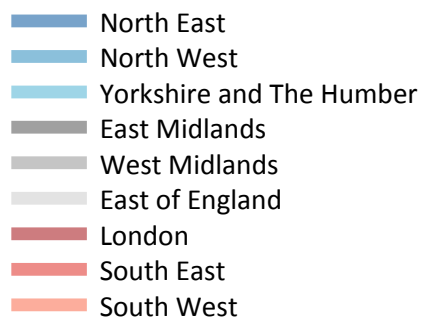
R.10 Placed 18 year old applicants by region of domicile: 4 days after A level results day

Placed 18 year old applicants: entry rate

Applicant Status	Domicile	2012	2013	2014	2015	2016
Placed	North East	22.9%	25.2%	24.9%	26.1%	27.1%
	North West	27.1%	28.2%	29.5%	29.6%	30.6%
	Yorkshire and The Humber	24.1%	26.4%	27.1%	28.1%	29.5%
	East Midlands	23.9%	25.9%	26.6%	27.0%	28.5%
	West Midlands	24.5%	26.4%	27.9%	28.2%	29.1%
	East of England	26.1%	28.0%	29.2%	29.4%	31.1%
	London	30.1%	32.4%	33.3%	35.4%	37.2%
	South East	27.6%	28.7%	29.9%	30.6%	32.1%
	South West	23.3%	24.8%	25.5%	26.5%	27.3%
	(England total)	26.0%	27.8%	28.8%	29.6%	30.9%
	Scotland	22.3%	22.7%	23.2%	23.8%	24.7%
	Northern Ireland	28.9%	32.2%	31.6%	30.6%	32.1%
	Wales	24.1%	24.6%	25.6%	26.7%	28.3%
	UK	25.7%	27.4%	28.3%	29.0%	30.4%

R.11 Placed 18 year old applicants by region of domicile: 4 days after A level results day

Placed 18 year old applicants: entry rates (indexed to 100 = England)



R.12 Placed 18 year old applicants by region of domicile: 4 days after A level results day

Placed 18 year old applicants: entry rate (indexed to 100 = England)

Applicant Status	Domicile	2012	2013	2014	2015	2016
Placed	North East	88	91	86	88	88
	North West	104	102	102	100	99
	Yorkshire and The Humber	93	95	94	95	95
	East Midlands	92	93	92	91	92
	West Midlands	94	95	97	95	94
	East of England	100	101	101	99	101
	London	116	117	116	120	120
	South East	106	103	104	104	104
	South West	90	89	89	89	88
	(England total)	100	100	100	100	100