

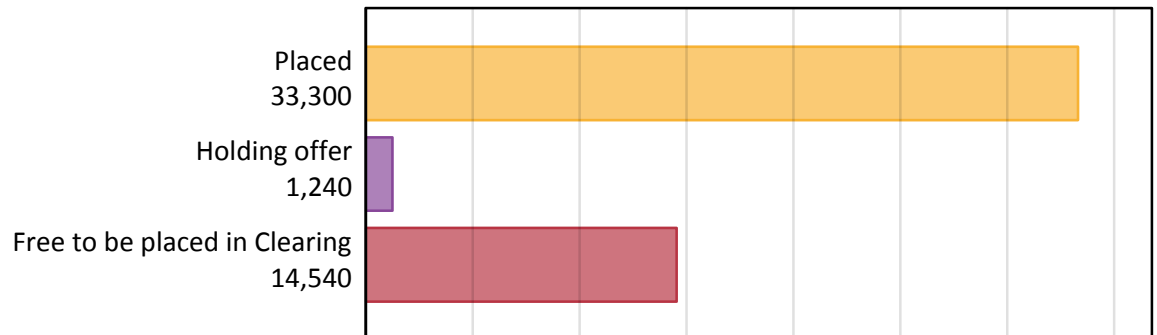
Daily Clearing Analysis: Overview

Analysis at 00:05 on Tuesday 30 August 2016 (12 days after A level results day)

A.1 Applicants by type and status from Scotland, 2016 cycle

Applicant type	Status	2016
Main scheme	Placed (Clearing)	1,150
	Placed (Adjustment)	10
	Placed (Firm)	29,730
	Placed (Insurance)	1,470
	Placed (Other)	670
	Holding offer	1,240
	Free to be placed in Clearing	14,540
Direct to Clearing	Placed (Direct to Clearing)	280
	Other (Direct to Clearing)	360
All applicants	Placed	33,300

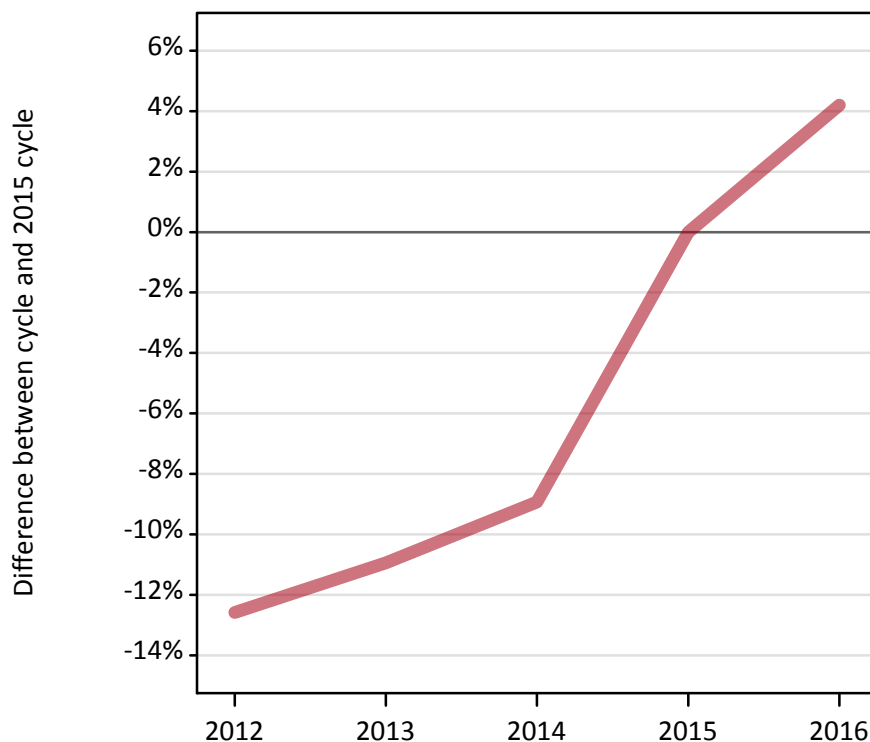
A.2 Summary of applicants who are placed, holding offers or free to be placed in Clearing (Scotland)



A.3 All placed applicants from Scotland: 12 days after A level results day

All placed applicants: difference between cycle and 2015 cycle

Placed



A.4 All placed applicants from Scotland: 12 days after A level results day

All placed applicants: applicants at 12 days after A level results day

Applicant type	Status	2012	2013	2014	2015	2016
All applicants	Placed	27,940	28,460	29,110	31,960	33,300

A.5 All placed applicants from Scotland: 12 days after A level results day

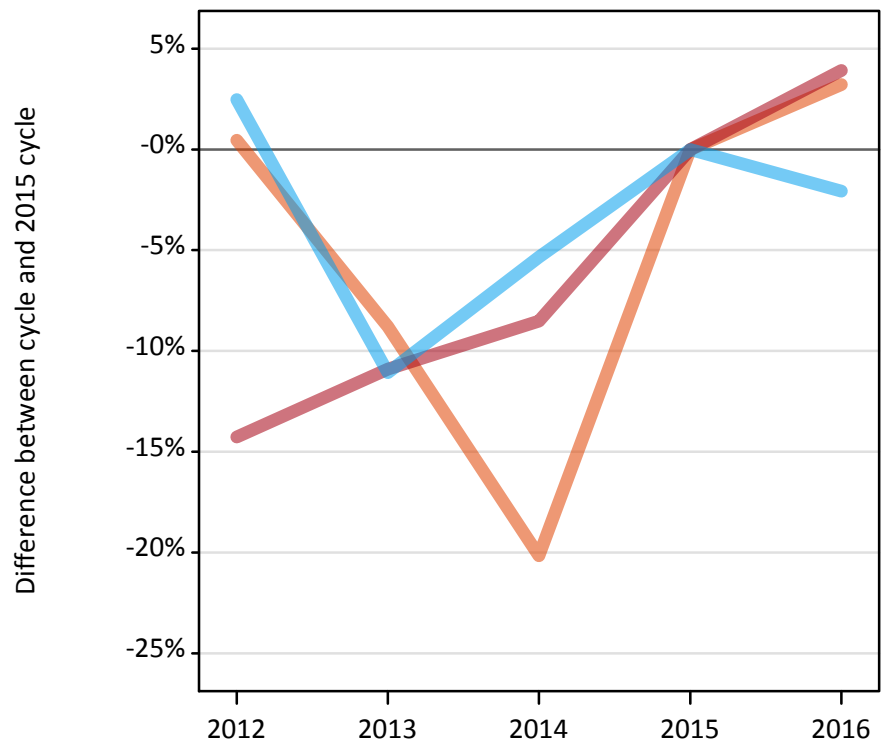
All placed applicants: difference between cycle and 2015 cycle

Applicant type	Status	2012	2013	2014	2015	2016
All applicants	Placed	-13%	-11%	-9%	0%	4%

A.6 Placed main scheme applicants from Scotland: 12 days after A level results day

Selected placed routes: difference between cycle and 2015 cycle

- Placed (Clearing)
- Placed (Firm)
- Placed (Insurance)



A.7 Placed main scheme applicants from Scotland: 12 days after A level results day

All Main scheme placed routes (excluding Adjustment): applicants at 12 days after A level results day

Applicant type	Status	2012	2013	2014	2015	2016
Main scheme	Placed (Clearing)	1,120	1,020	890	1,120	1,150
	Placed (Firm)	24,520	25,490	26,170	28,610	29,730
	Placed (Insurance)	1,540	1,330	1,420	1,500	1,470
	Placed (Other)	610	480	510	550	670

A.8 Placed main scheme applicants from Scotland: 12 days after A level results day

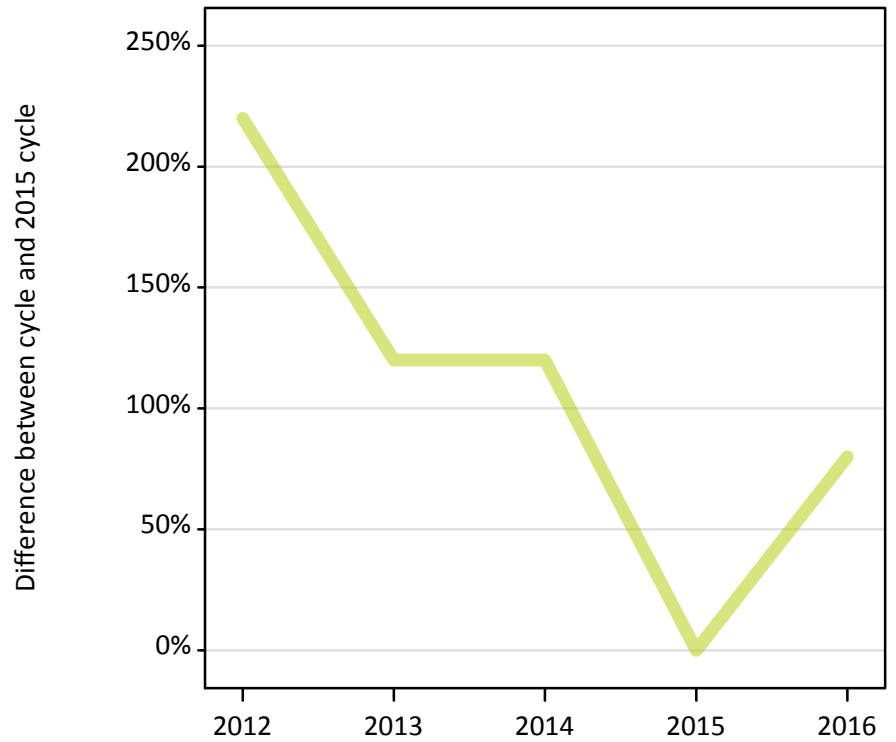
Selected placed routes: difference between cycle and 2015 cycle

Applicant type	Status	2012	2013	2014	2015	2016
Main scheme	Placed (Clearing)	0%	-9%	-20%	0%	3%
	Placed (Firm)	-14%	-11%	-9%	0%	4%
	Placed (Insurance)	2%	-11%	-5%	0%	-2%

A.9 Main scheme applicants placed through adjustment: 12 days after A level results day

Placed through adjustment: difference between cycle and 2015 cycle

Placed (Adjustment)



A.10 Main scheme applicants placed through adjustment: 12 days after A level results day

Placed through adjustment: applicants at 12 days after A level results day

Applicant type	Status	2012	2013	2014	2015	2016
Main scheme	Placed (Adjustment)	20	10	10	10	10

A.11 Main scheme applicants placed through adjustment: 12 days after A level results day

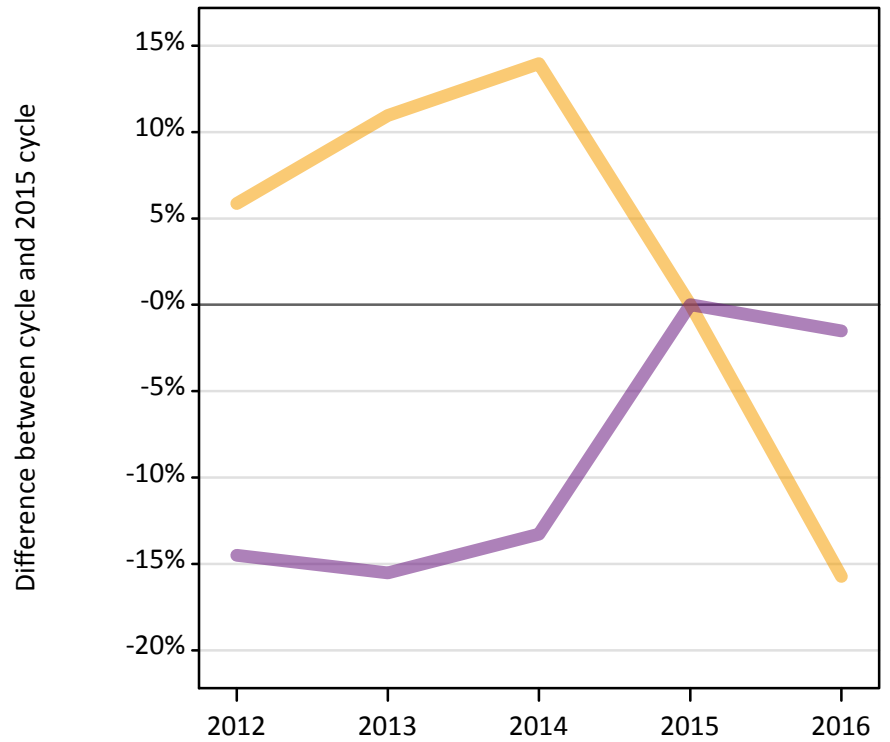
Placed through adjustment: difference between cycle and 2015 cycle

Applicant type	Status	2012	2013	2014	2015	2016
Main scheme	Placed (Adjustment)	220%	120%	120%	0%	80%

A.12 Main scheme applicants not currently placed from Scotland: 12 days after A level results day

Applicants in unplaced states: difference between cycle and 2015 cycle

— Holding offer
— Free to be placed in Clearing



A.13 Main scheme applicants not currently placed from Scotland: 12 days after A level results day

Applicants in unplaced states: applicants at 12 days after A level results day

Applicant type	Status	2012	2013	2014	2015	2016
Main scheme	Holding offer	1,560	1,630	1,670	1,470	1,240
	Free to be placed in Clearing	12,620	12,470	12,800	14,760	14,540

A.14 Main scheme applicants not currently placed from Scotland: 12 days after A level results day

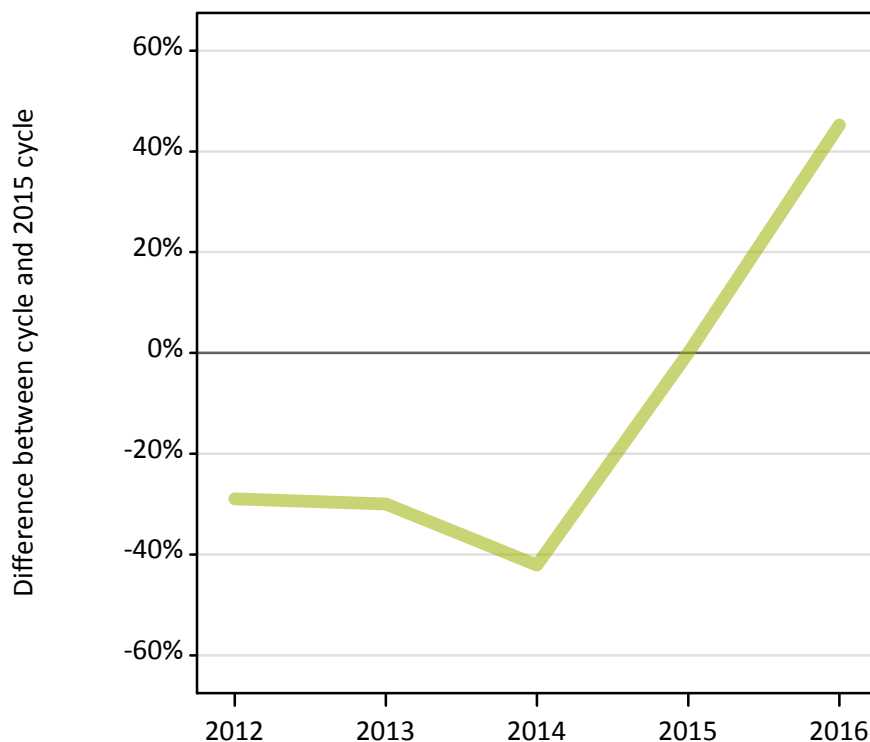
Applicants in unplaced states: difference between cycle and 2015 cycle

Applicant type	Status	2012	2013	2014	2015	2016
Main scheme	Holding offer	6%	11%	14%	0%	-16%
	Free to be placed in Clearing	-15%	-16%	-13%	0%	-2%

A.15 Direct to Clearing applicants from Scotland: 12 days after A level results day

Placed (Direct to Clearing): difference between cycle and 2015 cycle

Placed (Direct to Clearing)



A.16 Direct to Clearing applicants from Scotland: 12 days after A level results day

Direct to Clearing 12 days after A level results day

Applicant type	Status	2012	2013	2014	2015	2016
Direct to Clearing	Placed (Direct to Clearing)	140	130	110	190	280
	Other (Direct to Clearing)	270	280	260	360	360

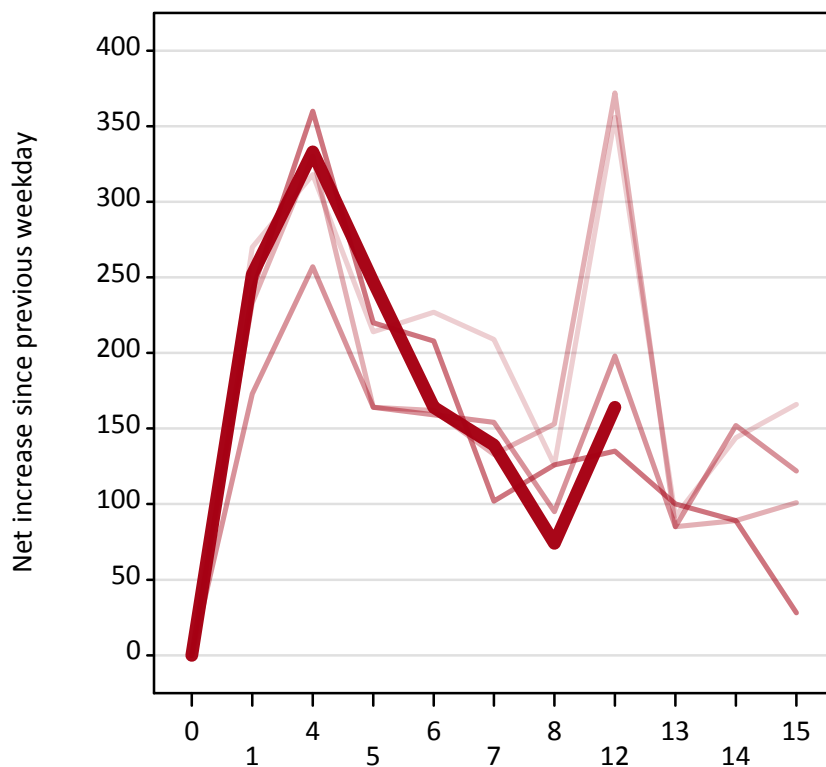
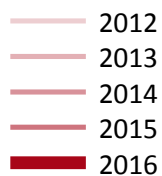
A.17 Direct to Clearing applicants from Scotland: 12 days after A level results day

Placed (Direct to Clearing): difference between cycle and 2015 cycle

Applicant type	Status	2012	2013	2014	2015	2016
Direct to Clearing	Placed (Direct to Clearing)	-29%	-30%	-42%	0%	45%

A.18 All Placed: Daily net change (from Scotland)

Net increase since previous weekday (2016 cycle up to 12 days after A level results day)



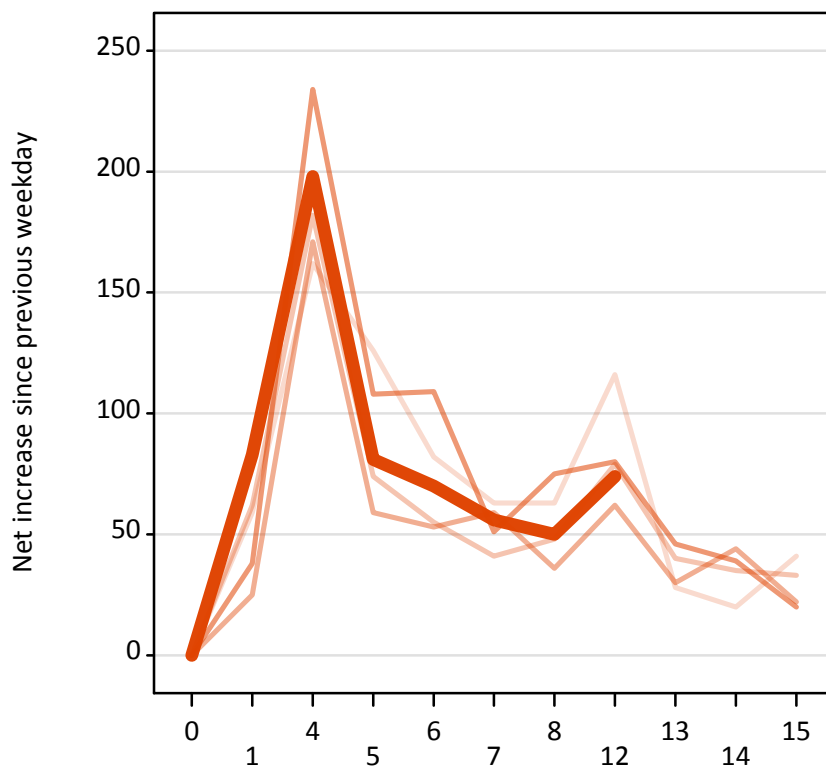
A.19 All Placed: Daily net change (from Scotland)

Net increase since previous weekday (2016 cycle up to 12 days after A level results day)

Applicant status, days since A level results day		2012	2013	2014	2015	2016
All Placed	0	0	0	0	0	0
	1	270	230	170	240	250
	4	320	330	260	360	330
	5	210	160	160	220	250
	6	230	160	160	210	160
	7	210	130	150	100	140
	8	130	150	100	130	70
	12	360	370	200	140	160
	13	90	90	90	100	
	14	140	90	150	90	
	15	170	100	120	30	

A.20 Placed through Clearing only: Daily net change (from Scotland)

Net increase since previous weekday (2016 cycle up to 12 days after A level results day)



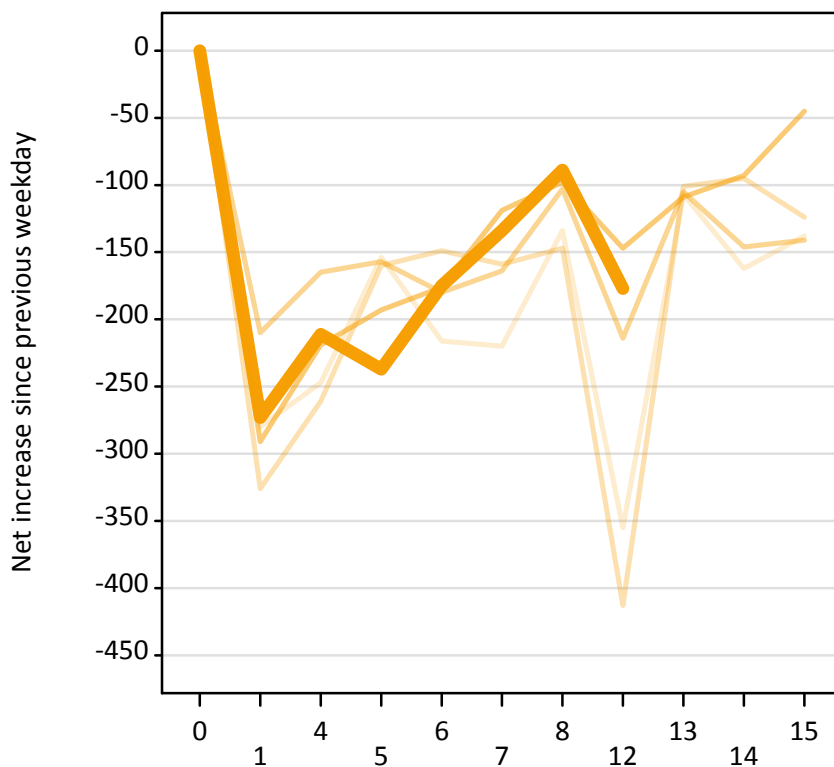
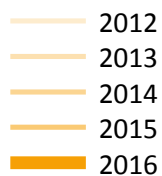
A.21 Placed through Clearing only: Daily net change (from Scotland)

Net increase since previous weekday (2016 cycle up to 12 days after A level results day)

Applicant status, days since A level results day		2012	2013	2014	2015	2016
Placed through Clearing only	0	0	0	0	0	0
	1	60	60	30	40	80
	4	160	180	170	230	200
	5	130	70	60	110	80
	6	80	60	50	110	70
	7	60	40	60	50	60
	8	60	50	40	80	50
	12	120	80	60	80	70
	13	30	40	30	50	
	14	20	40	40	40	
	15	40	30	20	20	

A.22 Holding Offer: Daily net change (from Scotland)

Net increase since previous weekday (2016 cycle up to 12 days after A level results day)



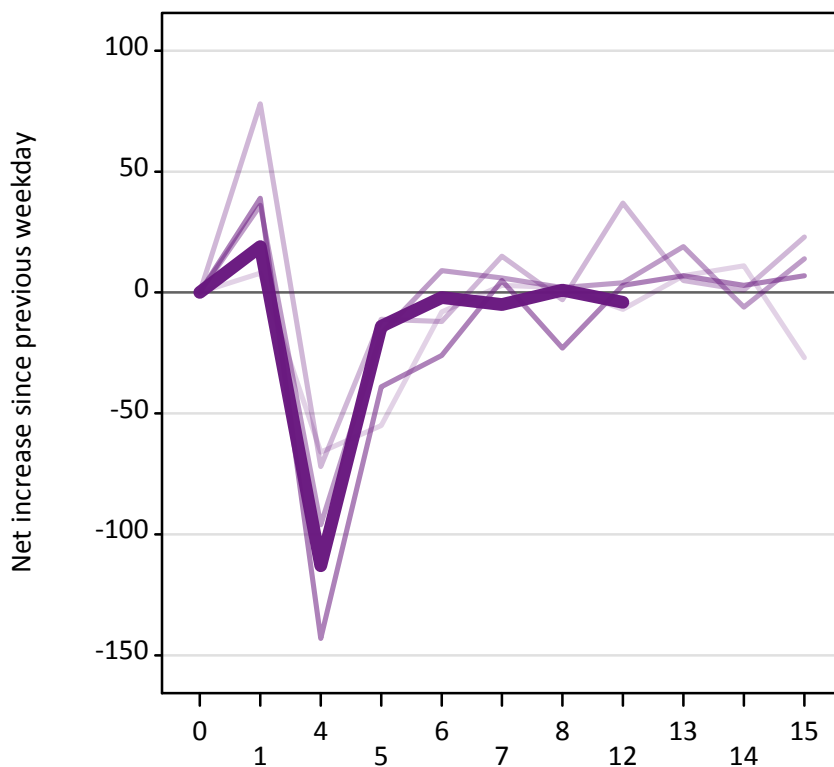
A.23 Holding Offer: Daily net change (from Scotland)

Net increase since previous weekday (2016 cycle up to 12 days after A level results day)

Applicant status, days since A level results day		2012	2013	2014	2015	2016
Holding Offer	0	0	0	0	0	0
	1	-280	-330	-210	-290	-270
	4	-250	-260	-170	-220	-210
	5	-150	-160	-160	-190	-240
	6	-220	-150	-180	-180	-180
	7	-220	-160	-160	-120	-130
	8	-130	-150	-100	-100	-90
	12	-360	-410	-210	-150	-180
	13	-110	-100	-110	-110	
	14	-160	-100	-150	-90	
	15	-140	-120	-140	-50	

A.24 Free to be placed in Clearing: Daily net change (from Scotland)

Net increase since previous weekday (2016 cycle up to 12 days after A level results day)



A.25 Free to be placed in Clearing: Daily net change (from Scotland)

Net increase since previous weekday (2016 cycle up to 12 days after A level results day)

Applicant status, days since A level results day		2012	2013	2014	2015	2016
Free to be placed in Clearing	0	0	0	0	0	0
	1	10	80	40	40	20
	4	-70	-70	-100	-140	-110
	5	-60	-10	-20	-40	-10
	6	-10	-10	10	-30	0
	7	0	20	10	10	-10
	8	0	0	0	-20	0
	12	-10	40	0	0	0
	13	10	10	20	10	
	14	10	0	-10	0	
	15	-30	20	10	10	