

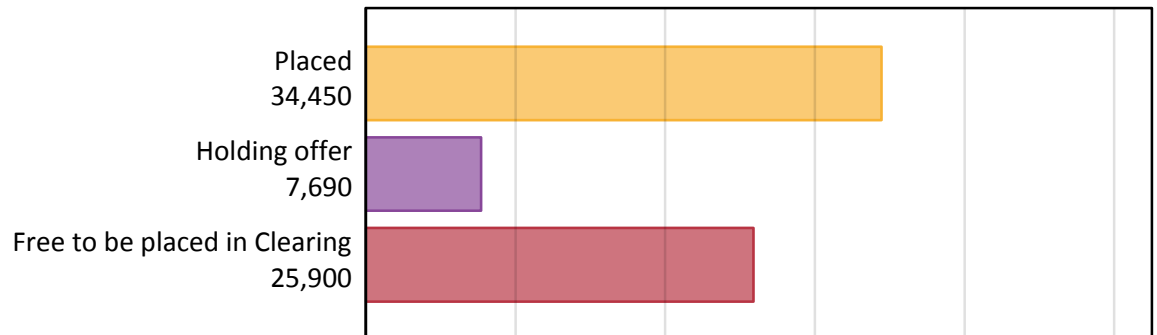
Daily Clearing Analysis: Overview

Analysis at 00:05 on Friday 2 September 2016 (15 days after A level results day)

A.1 Applicants by type and status from outside the EU, 2016 cycle

Applicant type	Status	2016
Main scheme	Placed (Clearing)	2,850
	Placed (Adjustment)	70
	Placed (Firm)	25,390
	Placed (Insurance)	3,580
	Placed (Other)	2,040
	Holding offer	7,690
	Free to be placed in Clearing	25,900
Direct to Clearing	Placed (Direct to Clearing)	520
	Other (Direct to Clearing)	680
All applicants	Placed	34,450

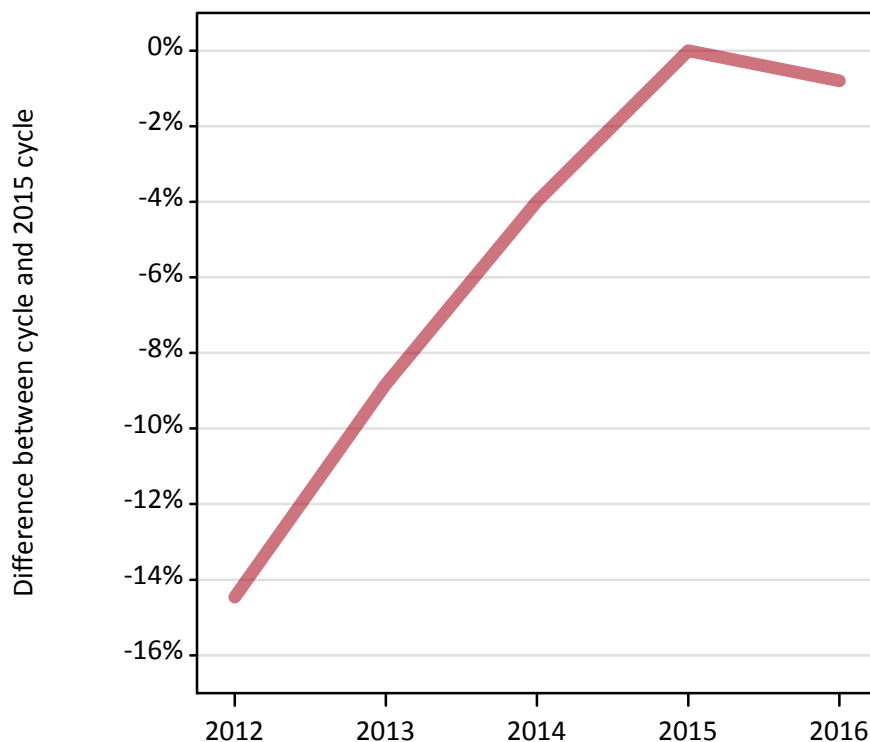
A.2 Summary of applicants who are placed, holding offers or free to be placed in Clearing (outside the EU)



A.3 All placed applicants from outside the EU: 15 days after A level results day

All placed applicants: difference between cycle and 2015 cycle

Placed



A.4 All placed applicants from outside the EU: 15 days after A level results day

All placed applicants: applicants at 15 days after A level results day

Applicant type	Status	2012	2013	2014	2015	2016
All applicants	Placed	29,710	31,660	33,340	34,730	34,450

A.5 All placed applicants from outside the EU: 15 days after A level results day

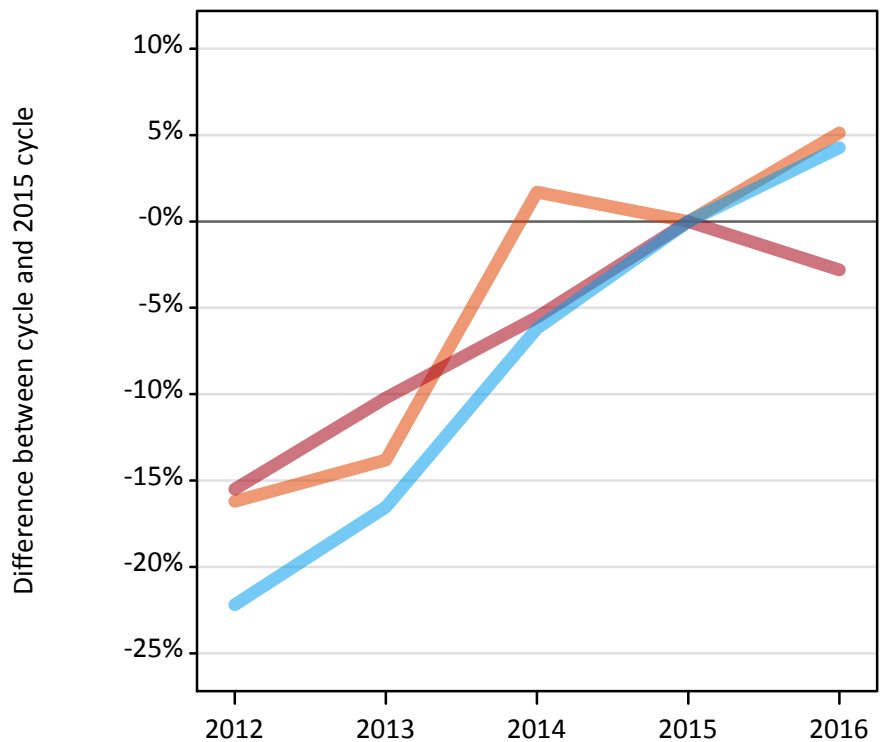
All placed applicants: difference between cycle and 2015 cycle

Applicant type	Status	2012	2013	2014	2015	2016
All applicants	Placed	-14%	-9%	-4%	0%	-1%

A.6 Placed main scheme applicants from outside the EU: 15 days after A level results day

Selected placed routes: difference between cycle and 2015 cycle

- Placed (Clearing)
- Placed (Firm)
- Placed (Insurance)



A.7 Placed main scheme applicants from outside the EU: 15 days after A level results day

All Main scheme placed routes (excluding Adjustment): applicants at 15 days after A level results day

Applicant type	Status	2012	2013	2014	2015	2016
Main scheme	Placed (Clearing)	2,270	2,340	2,760	2,710	2,850
	Placed (Firm)	22,080	23,460	24,680	26,130	25,390
	Placed (Insurance)	2,670	2,870	3,220	3,440	3,580
	Placed (Other)	2,210	2,500	2,200	1,890	2,040

A.8 Placed main scheme applicants from outside the EU: 15 days after A level results day

Selected placed routes: difference between cycle and 2015 cycle

Applicant type	Status	2012	2013	2014	2015	2016
Main scheme	Placed (Clearing)	-16%	-14%	2%	0%	5%
	Placed (Firm)	-15%	-10%	-6%	0%	-3%
	Placed (Insurance)	-22%	-17%	-6%	0%	4%

A.9 Main scheme applicants placed through adjustment: 15 days after A level results day

Placed through adjustment: difference between cycle and 2015 cycle

Placed (Adjustment)



A.10 Main scheme applicants placed through adjustment: 15 days after A level results day

Placed through adjustment: applicants at 15 days after A level results day

Applicant type	Status	2012	2013	2014	2015	2016
Main scheme	Placed (Adjustment)	70	60	90	70	70

A.11 Main scheme applicants placed through adjustment: 15 days after A level results day

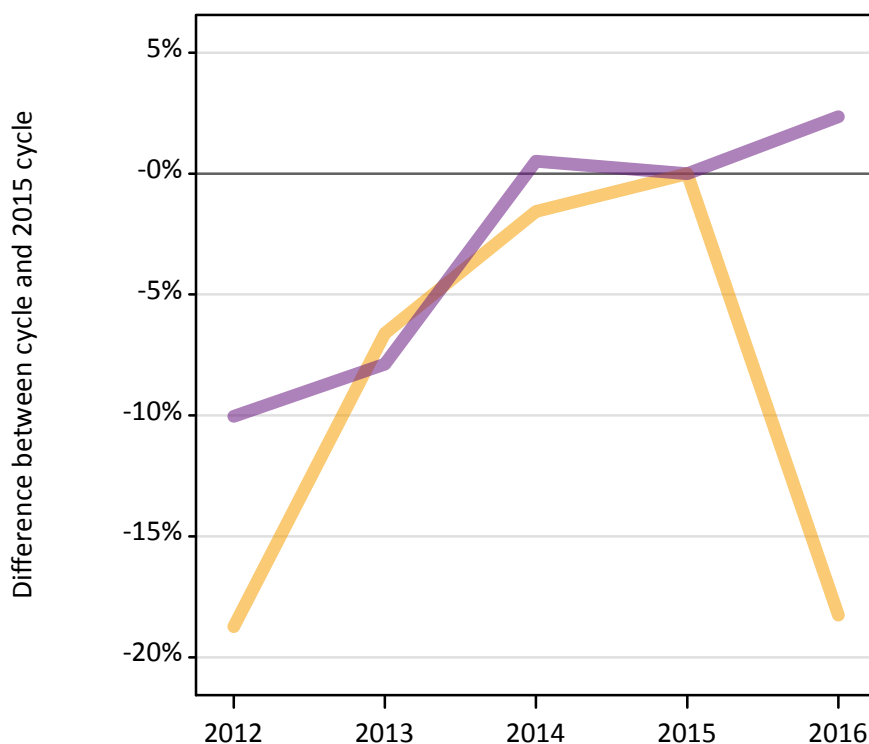
Placed through adjustment: difference between cycle and 2015 cycle

Applicant type	Status	2012	2013	2014	2015	2016
Main scheme	Placed (Adjustment)	-6%	-17%	19%	0%	-8%

A.12 Main scheme applicants not currently placed from outside the EU: 15 days after A level results day

Applicants in unplaced states: difference between cycle and 2015 cycle

— Holding offer
— Free to be placed in Clearing



A.13 Main scheme applicants not currently placed from outside the EU: 15 days after A level results day

Applicants in unplaced states: applicants at 15 days after A level results day

Applicant type	Status	2012	2013	2014	2015	2016
Main scheme	Holding offer	7,640	8,780	9,260	9,400	7,690
	Free to be placed in Clearing	22,760	23,310	25,440	25,300	25,900

A.14 Main scheme applicants not currently placed from outside the EU: 15 days after A level results day

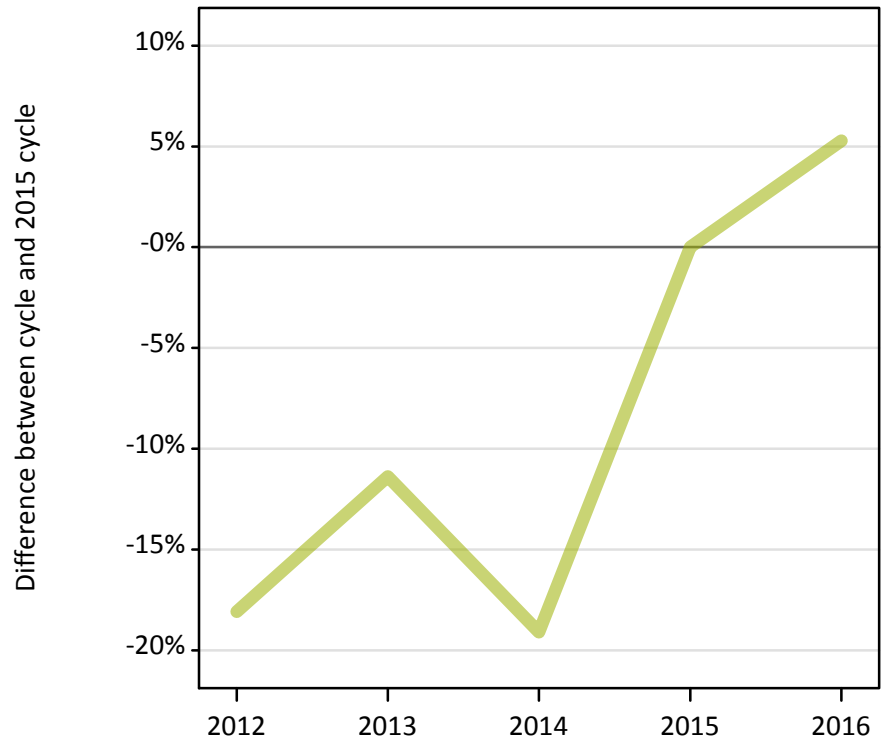
Applicants in unplaced states: difference between cycle and 2015 cycle

Applicant type	Status	2012	2013	2014	2015	2016
Main scheme	Holding offer	-19%	-7%	-2%	0%	-18%
	Free to be placed in Clearing	-10%	-8%	1%	0%	2%

A.15 Direct to Clearing applicants from outside the EU: 15 days after A level results day

Placed (Direct to Clearing): difference between cycle and 2015 cycle

Placed (Direct to Clearing)



A.16 Direct to Clearing applicants from outside the EU: 15 days after A level results day

Direct to Clearing 15 days after A level results day

Applicant type	Status	2012	2013	2014	2015	2016
Direct to Clearing	Placed (Direct to Clearing)	400	440	400	490	520
	Other (Direct to Clearing)	780	850	720	810	680

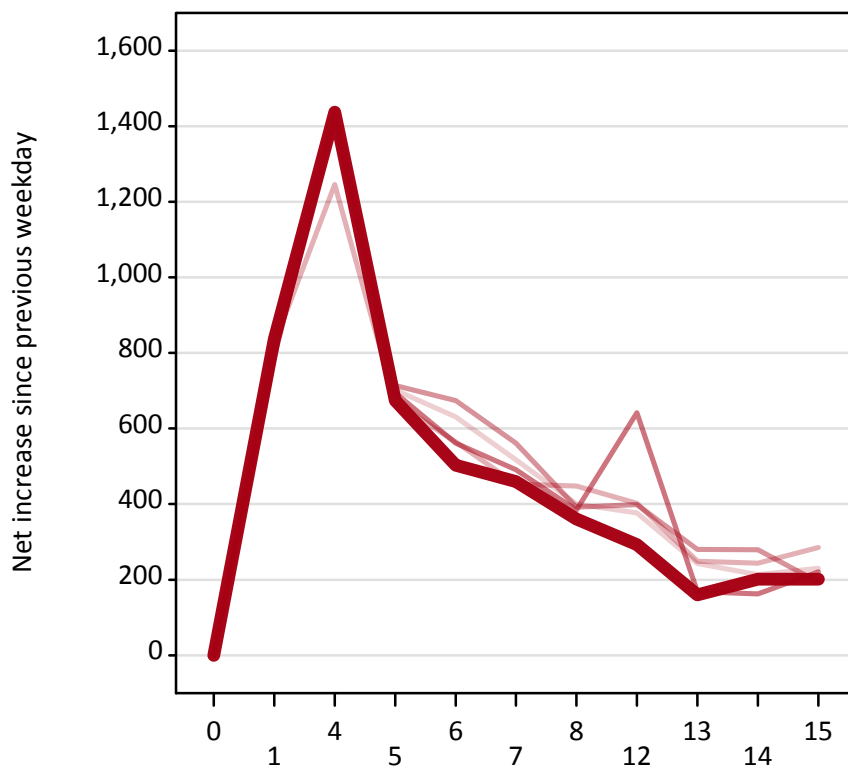
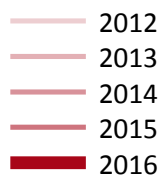
A.17 Direct to Clearing applicants from outside the EU: 15 days after A level results day

Placed (Direct to Clearing): difference between cycle and 2015 cycle

Applicant type	Status	2012	2013	2014	2015	2016
Direct to Clearing	Placed (Direct to Clearing)	-18%	-11%	-19%	0%	5%

A.18 All Placed: Daily net change (from outside the EU)

Net increase since previous weekday (2016 cycle up to 15 days after A level results day)



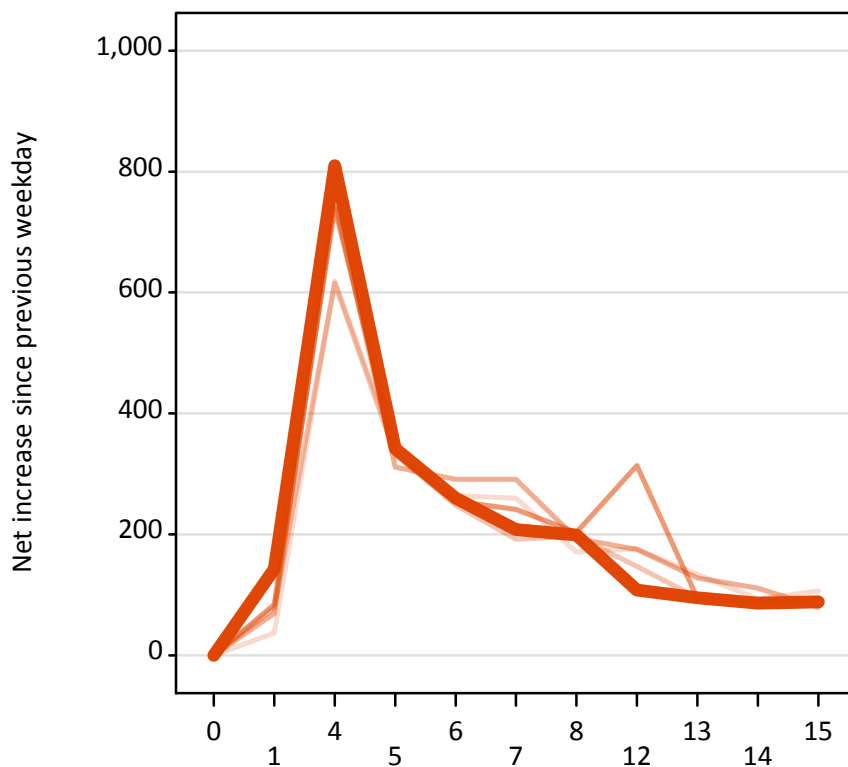
A.19 All Placed: Daily net change (from outside the EU)

Net increase since previous weekday (2016 cycle up to 15 days after A level results day)

Applicant status, days since A level results day		2012	2013	2014	2015	2016
All Placed	0	0	0	0	0	0
	1	790	820	850	790	840
	4	1,430	1,250	1,440	1,420	1,440
	5	700	670	710	690	670
	6	630	570	670	560	500
	7	520	450	560	490	460
	8	400	450	390	380	360
	12	380	400	400	640	290
	13	240	250	280	170	160
	14	210	240	280	160	200
	15	230	290	190	220	200

A.20 Placed through Clearing only: Daily net change (from outside the EU)

Net increase since previous weekday (2016 cycle up to 15 days after A level results day)



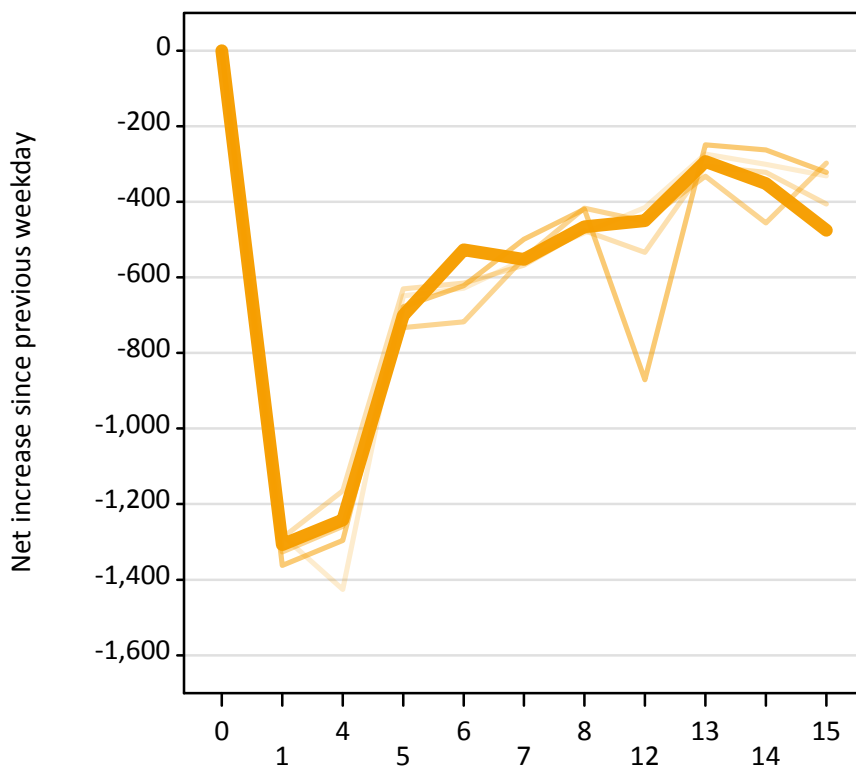
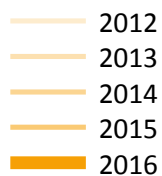
A.21 Placed through Clearing only: Daily net change (from outside the EU)

Net increase since previous weekday (2016 cycle up to 15 days after A level results day)

Applicant status, days since A level results day		2012	2013	2014	2015	2016
Placed through Clearing only	0	0	0	0	0	0
	1	40	80	70	80	140
	4	620	620	750	740	810
	5	340	330	310	340	340
	6	260	250	290	260	260
	7	260	190	290	240	210
	8	170	200	190	200	200
	12	180	150	180	310	110
	13	130	100	130	90	100
	14	90	90	110	90	90
	15	110	100	80	90	90

A.22 Holding Offer: Daily net change (from outside the EU)

Net increase since previous weekday (2016 cycle up to 15 days after A level results day)



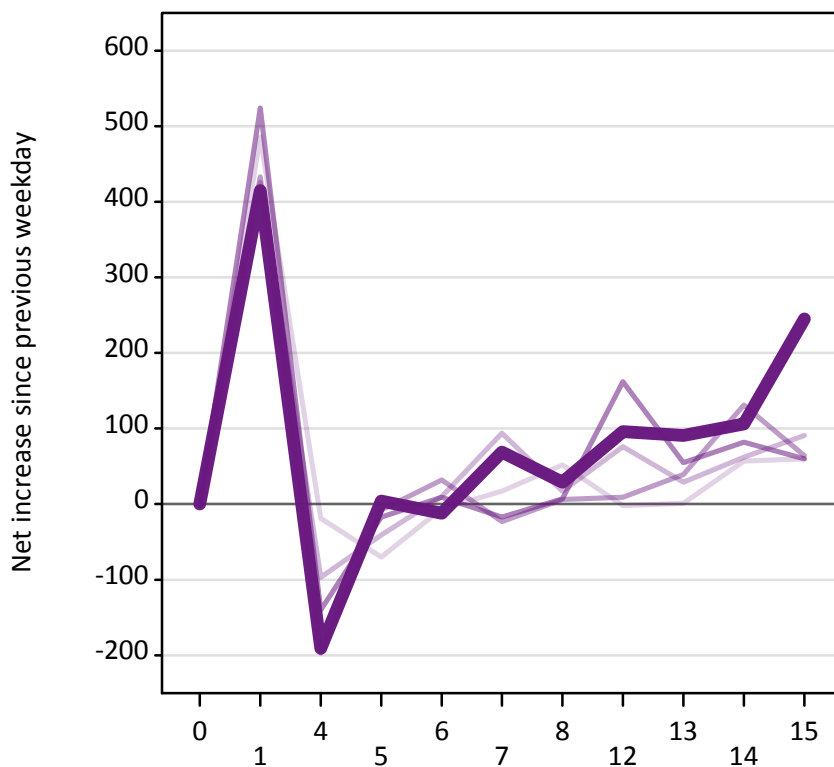
A.23 Holding Offer: Daily net change (from outside the EU)

Net increase since previous weekday (2016 cycle up to 15 days after A level results day)

Applicant status, days since A level results day		2012	2013	2014	2015	2016
Holding Offer	0	0	0	0	0	0
	1	-1,280	-1,290	-1,330	-1,360	-1,310
	4	-1,430	-1,170	-1,260	-1,300	-1,240
	5	-650	-630	-730	-680	-700
	6	-630	-620	-720	-620	-530
	7	-550	-570	-550	-500	-550
	8	-480	-480	-420	-420	-470
	12	-420	-530	-450	-870	-450
	13	-270	-310	-330	-250	-290
	14	-300	-320	-460	-260	-350
	15	-330	-410	-300	-320	-480

A.24 Free to be placed in Clearing: Daily net change (from outside the EU)

Net increase since previous weekday (2016 cycle up to 15 days after A level results day)



A.25 Free to be placed in Clearing: Daily net change (from outside the EU)

Net increase since previous weekday (2016 cycle up to 15 days after A level results day)

Applicant status, days since A level results day		2012	2013	2014	2015	2016
Free to be placed in Clearing	0	0	0	0	0	0
	1	490	430	430	520	420
	4	-20	-100	-200	-140	-190
	5	-70	-40	-10	-20	0
	6	-10	10	30	10	-10
	7	20	90	-20	-20	70
	8	50	20	10	10	30
	12	0	80	10	160	100
	13	0	30	40	60	90
	14	60	60	130	80	110
	15	60	90	60	60	250