

Analysis at 00:05 on Friday 2 September 2016 (15 days after A level results day)

C.1 Placed applicants by country of domicile and age group, 2016 cycle (15 days after A level results day)

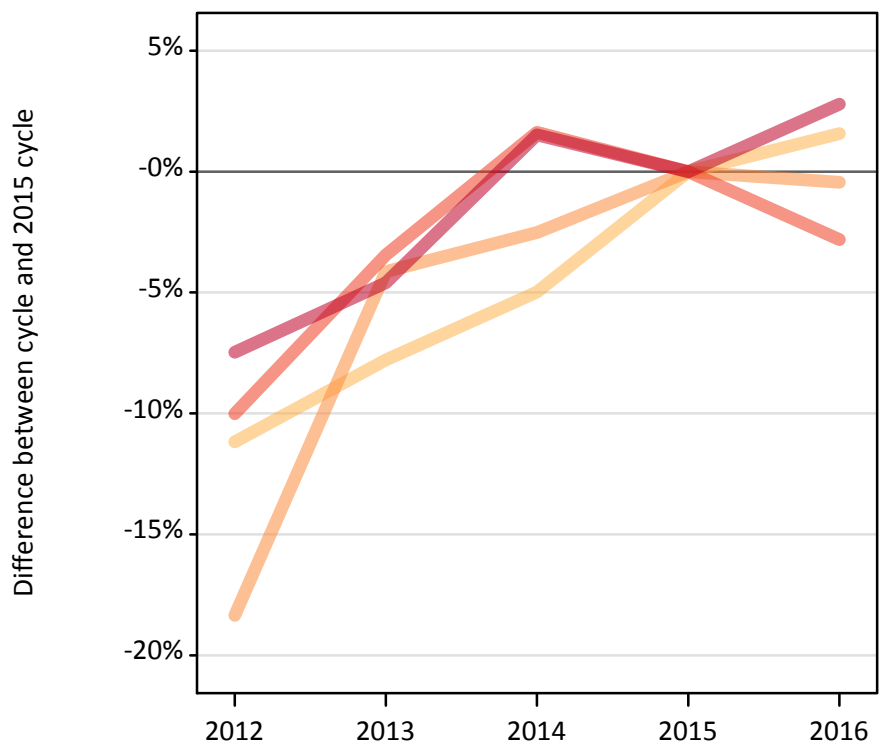
Domicile of applicant	Age group	2016
England	17	770
	18	203,730
	19	76,710
	20 to 24	53,190
	25 and over	34,120
Northern Ireland	17	30
	18	8,590
	19	2,690
	20 to 24	2,490
	25 and over	920
Scotland	17	440
	18	14,640
	19	4,310
	20 to 24	8,160
	25 and over	5,980
Wales	17	20
	18	10,620
	19	3,770
	20 to 24	3,010
	25 and over	1,960
UK	17	1,260
	18	237,570
	19	87,470
	20 to 24	66,850
	25 and over	42,990

C.2 Proportion of 18 year old population placed by country of domicile, 2016 cycle (15 days after A level results day)

Domicile of applicant	Age group	2016
England	18	32%
Northern Ireland	18	35%
Scotland	18	25%
Wales	18	29%

C.3 Placed applicants from England by age group at 15 days after A level results day

Selected age groups: difference between cycle and 2015 cycle



C.4 Placed applicants from England by age group at 15 days after A level results day

All age groups

Domicile of applicant	Age group	2012	2013	2014	2015	2016
England	17	670	650	690	760	770
	18	178,170	184,970	190,600	200,590	203,730
	19	62,910	73,870	75,110	77,050	76,710
	20 to 24	49,240	52,840	55,620	54,730	53,190
	25 and over	30,720	31,680	33,700	33,200	34,120

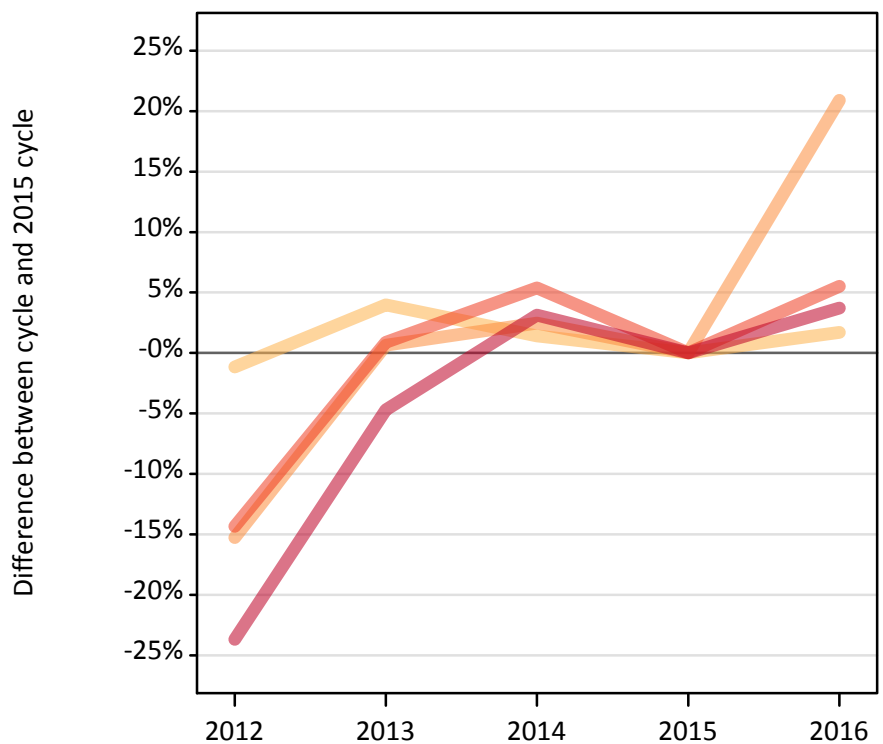
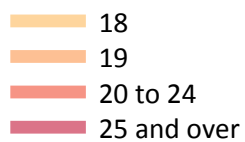
C.5 Placed applicants from England by age group at 15 days after A level results day

Selected age groups: difference between cycle and 2015 cycle

Domicile of applicant	Age group	2012	2013	2014	2015	2016
England	18	-11%	-8%	-5%	0%	2%
	19	-18%	-4%	-3%	0%	-0%
	20 to 24	-10%	-3%	2%	0%	-3%
	25 and over	-7%	-5%	2%	0%	3%

C.6 Placed applicants from Northern Ireland by age group at 15 days after A level results day

Selected age groups: difference between cycle and 2015 cycle



C.7 Placed applicants from Northern Ireland by age group at 15 days after A level results day

All age groups

Domicile of applicant	Age group	2012	2013	2014	2015	2016
Northern Ireland	17	40	20	20	20	30
	18	8,350	8,780	8,560	8,450	8,590
	19	1,880	2,240	2,280	2,220	2,690
	20 to 24	2,020	2,380	2,490	2,360	2,490
	25 and over	680	850	920	890	920

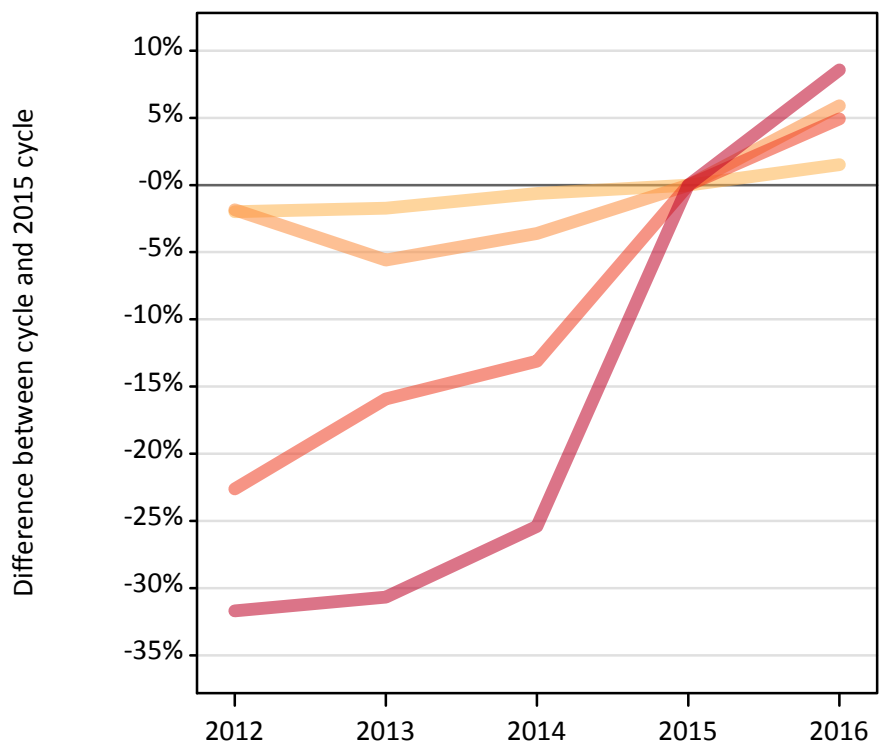
C.8 Placed applicants from Northern Ireland by age group at 15 days after A level results day

Selected age groups: difference between cycle and 2015 cycle

Domicile of applicant	Age group	2012	2013	2014	2015	2016
Northern Ireland	18	-1%	4%	1%	0%	2%
	19	-15%	1%	2%	0%	21%
	20 to 24	-14%	1%	5%	0%	6%
	25 and over	-24%	-5%	3%	0%	4%

C.9 Placed applicants from Scotland by age group at 15 days after A level results day

Selected age groups: difference between cycle and 2015 cycle



C.10 Placed applicants from Scotland by age group at 15 days after A level results day

All age groups

Domicile of applicant	Age group	2012	2013	2014	2015	2016
Scotland	17	430	370	350	400	440
	18	14,130	14,170	14,330	14,420	14,640
	19	3,990	3,840	3,920	4,070	4,310
	20 to 24	6,020	6,540	6,760	7,780	8,160
	25 and over	3,770	3,820	4,110	5,510	5,980

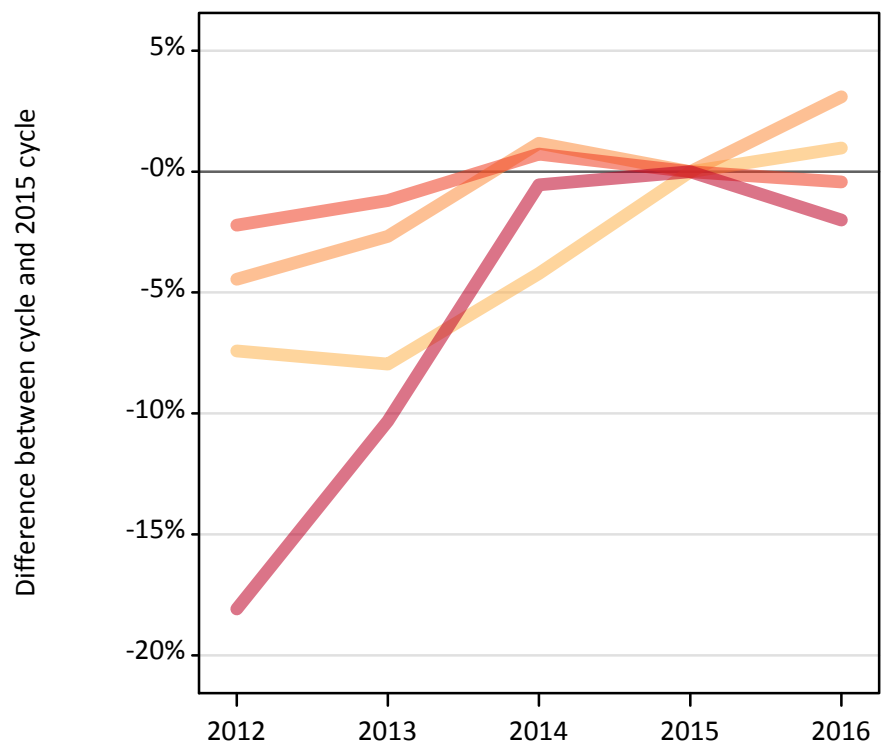
C.11 Placed applicants from Scotland by age group at 15 days after A level results day

Selected age groups: difference between cycle and 2015 cycle

Domicile of applicant	Age group	2012	2013	2014	2015	2016
Scotland	18	-2%	-2%	-1%	0%	2%
	19	-2%	-6%	-4%	0%	6%
	20 to 24	-23%	-16%	-13%	0%	5%
	25 and over	-32%	-31%	-25%	0%	9%

C.12 Placed applicants from Wales by age group at 15 days after A level results day

Selected age groups: difference between cycle and 2015 cycle



C.13 Placed applicants from Wales by age group at 15 days after A level results day

All age groups

Domicile of applicant	Age group	2012	2013	2014	2015	2016
Wales	17	20	30	20	20	20
	18	9,730	9,680	10,070	10,510	10,620
	19	3,490	3,560	3,700	3,660	3,770
	20 to 24	2,960	2,990	3,050	3,020	3,010
	25 and over	1,640	1,790	1,990	2,000	1,960

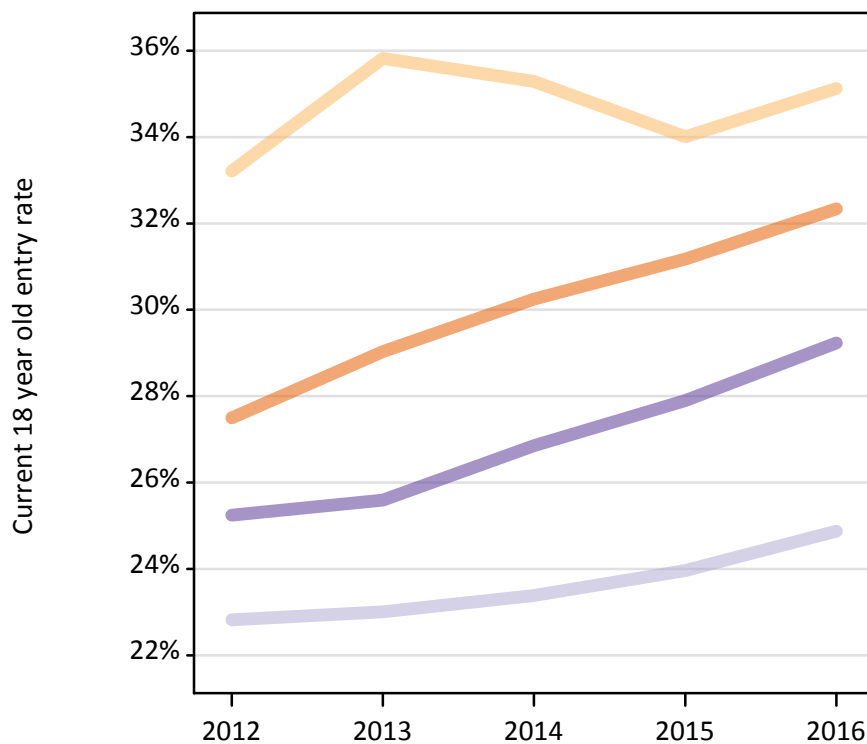
C.14 Placed applicants from Wales by age group at 15 days after A level results day

Selected age groups: difference between cycle and 2015 cycle

Domicile of applicant	Age group	2012	2013	2014	2015	2016
Wales	18	-7%	-8%	-4%	0%	1%
	19	-4%	-3%	1%	0%	3%
	20 to 24	-2%	-1%	1%	0%	-0%
	25 and over	-18%	-10%	-1%	0%	-2%

C.15 Entry rates for 18 year olds by UK country of domicile: 15 days after A level results day

Placed 18 year old applicants as a proportion of the 18 year old population



C.16 Entry rates for 18 year olds by UK country of domicile: 15 days after A level results day

Placed 18 year old applicants as a proportion of the 18 year old population

Domicile of applicant	Age group	2012	2013	2014	2015	2016
England	18	27.5%	29.0%	30.2%	31.2%	32.3%
Northern Ireland	18	33.2%	35.8%	35.3%	34.0%	35.1%
Scotland	18	22.8%	23.0%	23.4%	24.0%	24.9%
Wales	18	25.2%	25.6%	26.9%	27.9%	29.2%