

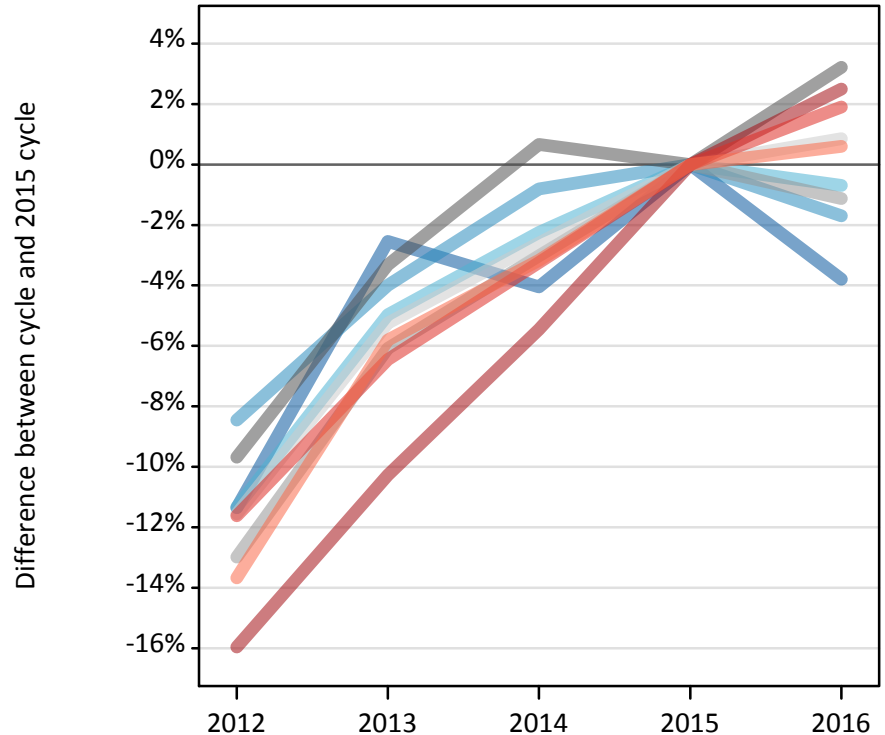
Daily Clearing Analysis: Region

Analysis at 00:05 on Friday 2 September 2016 (15 days after A level results day)

R.1 Placed applicants by region of domicile: 15 days after A level results day

Placed applicants: change relative to 2015 cycle totals

- North East
- North West
- Yorkshire and The Humber
- East Midlands
- West Midlands
- East of England
- London
- South East
- South West



R.2 Placed applicants by region of domicile: 15 days after A level results day

Applicant Status	Domicile	2012	2013	2014	2015	2016
Placed	North East	14,150	15,560	15,320	15,960	15,360
	North West	44,560	46,730	48,290	48,680	47,850
	Yorkshire and The Humber	29,940	32,090	33,010	33,770	33,540
	East Midlands	25,020	26,790	27,890	27,710	28,600
	West Midlands	34,130	36,830	38,030	39,220	38,780
	East of England	33,420	35,810	36,810	37,790	38,120
	London	59,230	63,240	66,640	70,480	72,240
	South East	52,150	55,200	57,090	59,000	60,120
	South West	29,110	31,760	32,650	33,720	33,920
	(England total)	321,710	344,000	355,720	366,320	368,510
	Scotland	28,340	28,740	29,470	32,180	33,520
	Northern Ireland	12,980	14,270	14,270	13,940	14,720
	Wales	17,840	18,040	18,820	19,210	19,370
	UK	380,870	405,050	418,280	431,640	436,130

R.3 Placed applicants by region of domicile: 15 days after A level results day

Placed applicants: change relative to 2015 cycle totals

Applicant Status	Domicile	2012	2013	2014	2015	2016
Placed	North East	-11%	-3%	-4%	0%	-4%
	North West	-8%	-4%	-1%	0%	-2%
	Yorkshire and The Humber	-11%	-5%	-2%	0%	-1%
	East Midlands	-10%	-3%	1%	0%	3%
	West Midlands	-13%	-6%	-3%	0%	-1%
	East of England	-12%	-5%	-3%	0%	1%
	London	-16%	-10%	-5%	0%	2%
	South East	-12%	-6%	-3%	0%	2%
	South West	-14%	-6%	-3%	0%	1%
	(England total)	-12%	-6%	-3%	0%	1%
	Scotland	-12%	-11%	-8%	0%	4%
	Northern Ireland	-7%	2%	2%	0%	6%
	Wales	-7%	-6%	-2%	0%	1%
	UK	-12%	-6%	-3%	0%	1%

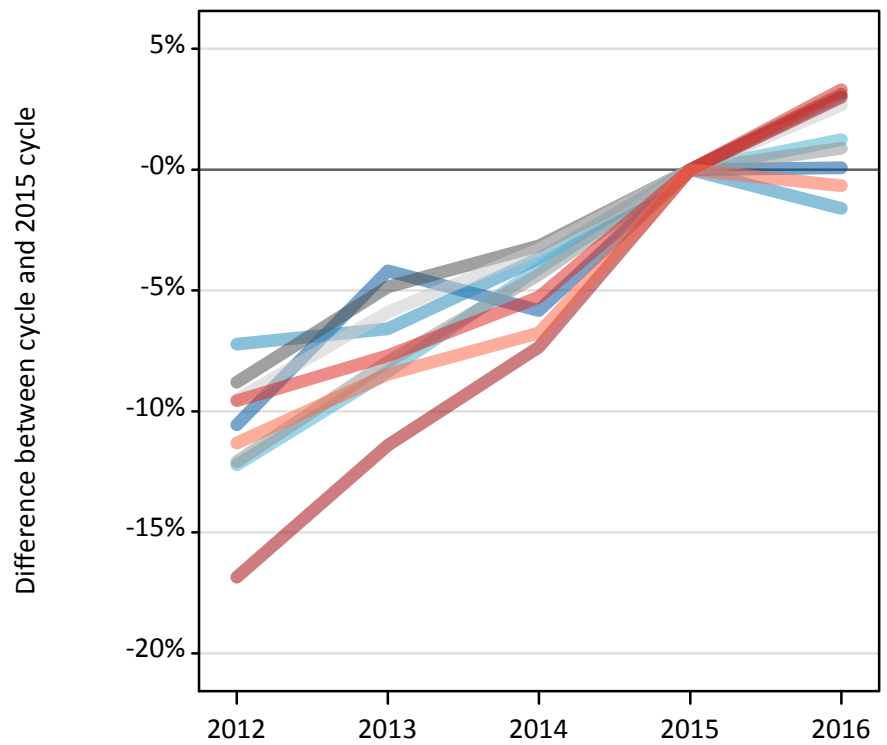
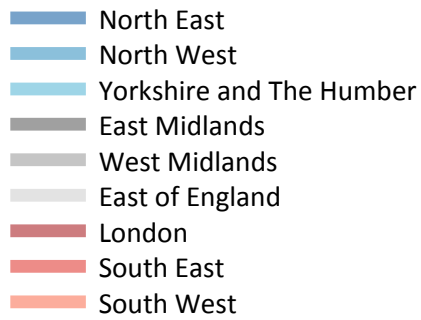
R.4 Placed applicants by region of domicile: 15 days after A level results day

Placed applicants: absolute change relative to 2015 cycle totals

Applicant Status	Domicile	2012	2013	2014	2015	2016
Placed	North East	-1,810	-410	-650	0	-610
	North West	-4,110	-1,940	-390	0	-830
	Yorkshire and The Humber	-3,830	-1,680	-760	0	-230
	East Midlands	-2,680	-920	180	0	890
	West Midlands	-5,090	-2,390	-1,180	0	-440
	East of England	-4,370	-1,980	-980	0	320
	London	-11,250	-7,240	-3,840	0	1,760
	South East	-6,860	-3,810	-1,910	0	1,120
	South West	-4,610	-1,960	-1,070	0	200
	(England total)	-44,610	-22,320	-10,600	0	2,180
	Scotland	-3,840	-3,440	-2,710	0	1,350
	Northern Ireland	-960	330	330	0	780
	Wales	-1,370	-1,170	-390	0	170
	UK	-50,780	-26,590	-13,370	0	4,480

R.5 Placed 18 year old applicants by region of domicile: 15 days after A level results day

Placed 18 year old applicants: change relative to 2015 cycle totals



R.6 Placed 18 year old applicants by region of domicile: 15 days after A level results day

Applicant Status	Domicile	2012	2013	2014	2015	2016
Placed	North East	7,580	8,120	7,980	8,470	8,480
	North West	25,300	25,480	26,270	27,270	26,840
	Yorkshire and The Humber	16,580	17,310	18,120	18,890	19,120
	East Midlands	14,220	14,840	15,100	15,590	16,080
	West Midlands	18,680	19,560	20,320	21,250	21,430
	East of England	20,130	20,940	21,510	22,250	22,840
	London	29,490	31,430	32,870	35,470	36,540
	South East	30,690	31,330	32,150	33,940	35,060
	South West	15,480	15,980	16,280	17,460	17,340
	(England total)	178,170	184,970	190,600	200,590	203,730
	Scotland	14,130	14,170	14,330	14,420	14,640
	Northern Ireland	8,350	8,780	8,560	8,450	8,590
	Wales	9,730	9,680	10,070	10,510	10,620
	UK	210,380	217,590	223,560	233,960	237,570

R.7 Placed 18 year old applicants by region of domicile: 15 days after A level results day

Placed 18 year old applicants: change relative to 2015 cycle totals

Applicant Status	Domicile	2012	2013	2014	2015	2016
Placed	North East	-11%	-4%	-6%	0%	0%
	North West	-7%	-7%	-4%	0%	-2%
	Yorkshire and The Humber	-12%	-8%	-4%	0%	1%
	East Midlands	-9%	-5%	-3%	0%	3%
	West Midlands	-12%	-8%	-4%	0%	1%
	East of England	-10%	-6%	-3%	0%	3%
	London	-17%	-11%	-7%	0%	3%
	South East	-10%	-8%	-5%	0%	3%
	South West	-11%	-8%	-7%	0%	-1%
	(England total)	-11%	-8%	-5%	0%	2%
	Scotland	-2%	-2%	-1%	0%	2%
	Northern Ireland	-1%	4%	1%	0%	2%
	Wales	-7%	-8%	-4%	0%	1%
	UK	-10%	-7%	-4%	0%	2%

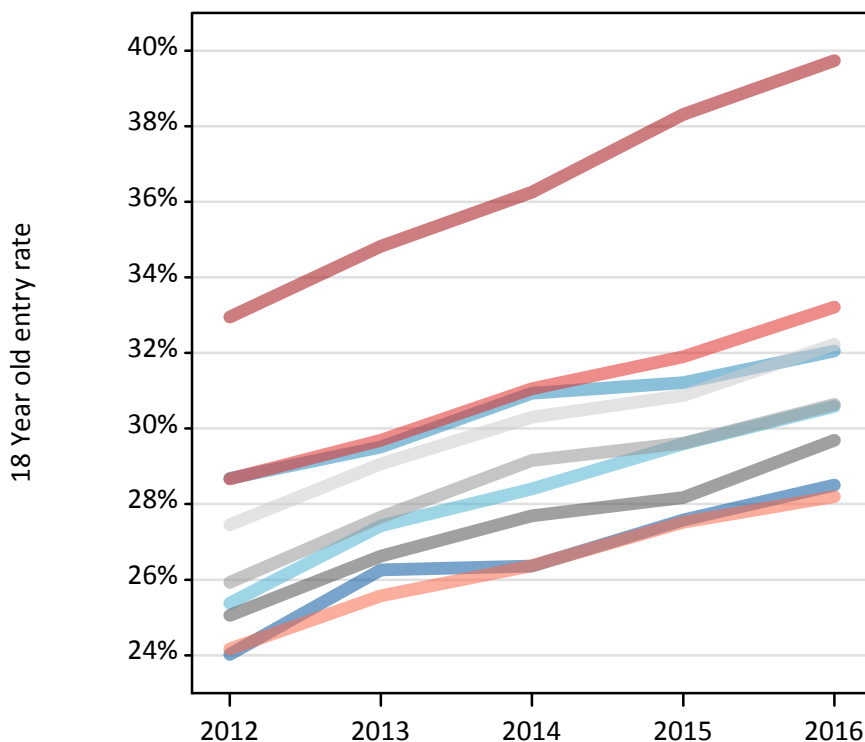
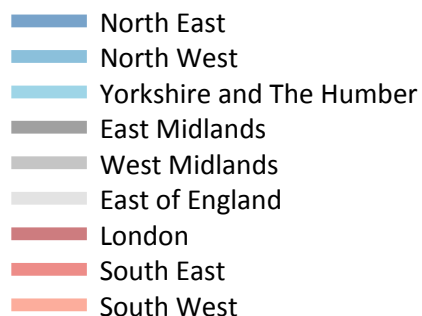
R.8 Placed 18 year old applicants by region of domicile: 15 days after A level results day

Placed 18 year old applicants: absolute change relative to 2015 cycle totals

Applicant Status	Domicile	2012	2013	2014	2015	2016
Placed	North East	-890	-360	-490	0	10
	North West	-1,970	-1,800	-1,000	0	-440
	Yorkshire and The Humber	-2,310	-1,580	-770	0	240
	East Midlands	-1,370	-760	-490	0	490
	West Midlands	-2,570	-1,690	-920	0	190
	East of England	-2,120	-1,310	-740	0	590
	London	-5,980	-4,050	-2,610	0	1,060
	South East	-3,240	-2,610	-1,790	0	1,120
	South West	-1,970	-1,480	-1,180	0	-120
	(England total)	-22,420	-15,620	-9,990	0	3,140
	Scotland	-290	-250	-90	0	220
	Northern Ireland	-100	340	120	0	140
	Wales	-780	-840	-440	0	100
	UK	-23,580	-16,370	-10,400	0	3,600

R.9 Placed 18 year old applicants by region of domicile: 15 days after A level results day

Placed 18 year old applicants: entry rate



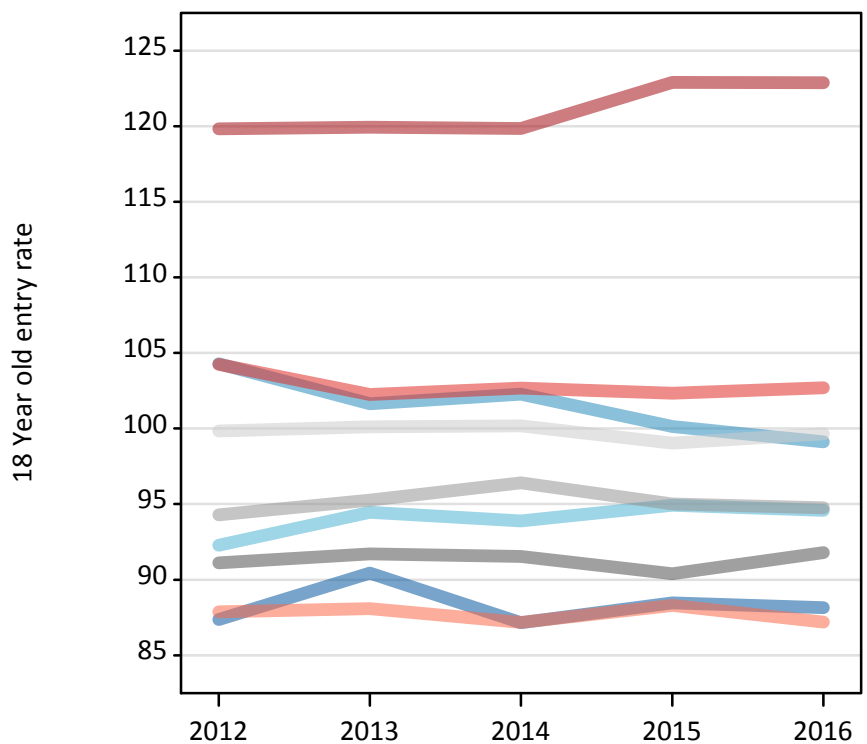
R.10 Placed 18 year old applicants by region of domicile: 15 days after A level results day

Placed 18 year old applicants: entry rate

Applicant Status	Domicile	2012	2013	2014	2015	2016
Placed	North East	24.0%	26.3%	26.4%	27.6%	28.5%
	North West	28.7%	29.5%	30.9%	31.2%	32.1%
	Yorkshire and The Humber	25.4%	27.4%	28.4%	29.6%	30.6%
	East Midlands	25.1%	26.6%	27.7%	28.2%	29.7%
	West Midlands	25.9%	27.7%	29.2%	29.6%	30.6%
	East of England	27.5%	29.1%	30.3%	30.9%	32.2%
	London	33.0%	34.8%	36.3%	38.3%	39.7%
	South East	28.7%	29.7%	31.1%	31.9%	33.2%
	South West	24.2%	25.6%	26.4%	27.5%	28.2%
	(England total)	27.5%	29.0%	30.2%	31.2%	32.3%
	Scotland	22.8%	23.0%	23.4%	24.0%	24.9%
	Northern Ireland	33.2%	35.8%	35.3%	34.0%	35.1%
	Wales	25.2%	25.6%	26.9%	27.9%	29.2%
	UK	27.2%	28.6%	29.7%	30.5%	31.7%

R.11 Placed 18 year old applicants by region of domicile: 15 days after A level results day

Placed 18 year old applicants: entry rates (indexed to 100 = England)



R.12 Placed 18 year old applicants by region of domicile: 15 days after A level results day

Placed 18 year old applicants: entry rate (indexed to 100 = England)

Applicant Status	Domicile	2012	2013	2014	2015	2016
Placed	North East	87	90	87	88	88
	North West	104	102	102	100	99
	Yorkshire and The Humber	92	94	94	95	95
	East Midlands	91	92	92	90	92
	West Midlands	94	95	96	95	95
	East of England	100	100	100	99	100
	London	120	120	120	123	123
	South East	104	102	103	102	103
	South West	88	88	87	88	87
	(England total)	100	100	100	100	100