

R72 Royal Holloway University of London

Cycle years: 2010 - 2015

Cycle Reference Point: End of Cycle

Applicant coverage: UK domiciled

Reporting groups: Sex, POLAR3, ethnic group

Applicant statistics: June deadline applicants, placed June deadline applicants, all placed applicants, June deadline applicants per 10,000 population, placed June deadline applicants per 10,000 population, all placed applicants per 10,000 population

Application statistics: June deadline applications, offers, offer rate, average offer rate, percentage point difference between offer rate and average offer rate, contribution of group to the average offer rate

Non-disclosure controls: To avoid the disclosure of information about any individual the following measures are taken

- Applicants, placed applicants, applications and offers are rounded to the nearest 5.
- Applicants/placed applicants per 10,000 population figures are reported as 0 if the applicant/placed applicant figures are rounded to 0.
- All statistics related to the offer rate are not reported when the number of applications for a group is less than 10. The percentage point difference between the offer rate and the average offer rate is not reported when the number of applications for a group is less than 50.
- Offer rates are reported as 0% if there are fewer than 5 offers, and 100% if the number of offers is within 5 of the number of applications. When the offer rate is reported as 0% or 100%, it is reported in italics.

Contents:

18 year old applicants:	P.1
18 year old applications:	P.2
18 year old applicants by sex:	P.3
18 year old applications by sex:	P.4
18 year old applicants by POLAR3 quintile:	P.7
18 year old applications by POLAR3 quintile:	P.8
18 year old applicants by ethnic group:	P.11
18 year old applications by ethnic group:	P.12
Applicants (all ages):	P.15
Applications (all ages):	P.16
Applicants (all ages) by sex:	P.17
Applications (all ages) by sex:	P.18
Applicants (all ages) by POLAR3 quintile:	P.19
Applications (all ages) by POLAR3 quintile:	P.20
Applicants (all ages) by ethnic group:	P.21
Applications (all ages) by ethnic group:	P.22

P.1 18 year old applicants

Statistic	2010	2011	2012	2013	2014	2015
June deadline applicants	6,070	5,895	6,415	6,430	6,985	8,295
Placed June deadline applicants	920	995	835	1,040	1,220	1,335
All placed applicants	1,080	1,120	1,090	1,160	1,260	1,410
June deadline applicants per 10,000 population	76.9	76.6	83.0	84.5	92.7	108.3
Placed June deadline applicants per 10,000	11.7	12.9	10.8	13.7	16.2	17.4
All placed applicants per 10,000 population	13.7	14.5	14.1	15.2	16.8	18.4

P.2 18 year old applications

Statistic	2010	2011	2012	2013	2014	2015
June deadline applications	6,150	5,960	6,520	6,530	7,135	8,450
Offers	5,405	5,020	5,920	5,820	6,440	7,485
Offer rate	87.9%	84.3%	90.8%	89.1%	90.2%	88.6%

P.3 18 year old applicants by sex

Statistic	Sex	2010	2011	2012	2013	2014	2015
June deadline applicants	Men	2,335	2,310	2,540	2,345	2,665	3,245
	Women	3,730	3,585	3,875	4,085	4,320	5,050
Placed June deadline applicants	Men	330	385	310	350	420	495
	Women	590	605	520	690	795	840
All placed applicants	Men	395	445	420	400	435	525
	Women	685	675	670	760	825	890
June deadline applicants per 10,000 population	Men	58.2	58.7	64.1	60.1	68.9	82.7
	Women	96.2	95.2	102.8	110.3	118.0	135.2
Placed June deadline applicants per 10,000 population	Men	8.2	9.8	7.8	8.9	10.9	12.6
	Women	15.3	16.1	13.8	18.6	21.7	22.5
All placed applicants per 10,000 population	Men	9.8	11.3	10.6	10.2	11.3	13.3
	Women	17.7	17.9	17.7	20.5	22.6	23.8

P.4 18 year old applications by sex

Statistic	Sex	2010	2011	2012	2013	2014	2015
June deadline applications	Men	2,370	2,335	2,590	2,390	2,720	3,315
	Women	3,775	3,625	3,930	4,140	4,415	5,135
Offers	Men	2,090	1,995	2,305	2,080	2,405	2,855
	Women	3,315	3,030	3,610	3,740	4,035	4,630
Offer rate	Men	88.2%	85.4%	89.1%	87.0%	88.4%	86.1%
	Women	87.7%	83.5%	92.0%	90.3%	91.3%	90.1%
Average offer rate	Men	88.5%	84.9%	90.0%	87.2%	88.4%	86.3%
	Women	87.6%	83.8%	91.3%	90.2%	91.4%	90.0%
Percentage point difference between offer rate and average offer rate	Men	-0.3	0.5	-1.0	-0.2	0.0	-0.2
	Women	0.2	-0.3	0.6	0.1	-0.0	0.2
Contribution of group to the average offer rate	Men	0.532	0.542	0.541	0.526	0.514	0.525
	Women	0.706	0.705	0.698	0.727	0.701	0.693

P.5 18 year old offer rate by sex

Note: The line for a group is not plotted when that group made fewer than 10 applications in any of the years from 2010-2015.

Men
Women



P.6 Percentage point difference between 18 year old offer rate and average offer rate by sex

Note: The line for a group is not plotted when that group made fewer than 50 applications in any of the years from 2010-2015.

Men
Women



P.7 18 year old applicants by POLAR3 quintile

Statistic	POLAR3 quintile	2010	2011	2012	2013	2014	2015
June deadline applicants	Quintile 1	285	265	300	370	410	470
	Quintile 2	600	570	655	710	810	925
	Quintile 3	1,090	1,035	1,165	1,190	1,310	1,540
	Quintile 4	1,630	1,590	1,700	1,760	1,890	2,285
	Quintile 5	2,450	2,410	2,575	2,390	2,550	3,050
Placed June deadline applicants	Quintile 1	45	40	55	70	85	55
	Quintile 2	90	100	90	110	135	180
	Quintile 3	145	180	140	175	215	250
	Quintile 4	270	265	220	285	345	370
	Quintile 5	375	405	325	395	430	475
All placed applicants	Quintile 1	55	45	65	75	85	60
	Quintile 2	100	105	115	120	145	190
	Quintile 3	165	200	190	200	220	260
	Quintile 4	320	300	285	325	355	385
	Quintile 5	440	460	430	440	455	515
June deadline applicants per 10,000 population	Quintile 1	19.3	18.6	21.1	26.6	29.3	33.5
	Quintile 2	39.2	38.0	43.7	48.0	55.2	62.3
	Quintile 3	68.5	67.2	75.6	78.0	87.0	100.4
	Quintile 4	102.4	101.6	107.1	112.5	122.6	145.8
	Quintile 5	144.4	145.7	153.2	144.5	156.5	182.2
Placed June deadline applicants per 10,000 population	Quintile 1	3.0	2.8	3.7	5.2	6.2	4.0
	Quintile 2	5.7	6.5	6.0	7.5	9.3	12.2
	Quintile 3	9.2	11.7	9.1	11.6	14.2	16.3
	Quintile 4	16.8	16.9	14.0	18.2	22.4	23.6
	Quintile 5	22.0	24.3	19.3	23.8	26.5	28.4
All placed applicants per 10,000 population	Quintile 1	3.6	3.1	4.5	5.2	6.3	4.1
	Quintile 2	6.4	7.1	7.6	8.1	9.8	12.8
	Quintile 3	10.3	12.9	12.4	13.2	14.5	16.8
	Quintile 4	20.2	19.0	17.9	20.8	23.0	24.7
	Quintile 5	25.9	27.9	25.7	26.6	27.8	30.8

P.8 18 year old applications by POLAR3 quintile

Statistic	POLAR3 quintile	2010	2011	2012	2013	2014	2015
June deadline applications	Quintile 1	295	270	310	375	420	480
	Quintile 2	610	580	665	720	820	940
	Quintile 3	1,105	1,045	1,185	1,205	1,335	1,570
	Quintile 4	1,650	1,605	1,725	1,790	1,935	2,320
	Quintile 5	2,480	2,440	2,610	2,425	2,610	3,110
Offers	Quintile 1	245	220	275	320	370	400
	Quintile 2	525	475	580	605	730	825
	Quintile 3	960	860	1,060	1,060	1,190	1,375
	Quintile 4	1,460	1,340	1,585	1,615	1,735	2,040
	Quintile 5	2,205	2,110	2,405	2,210	2,395	2,825
Offer rate	Quintile 1	83.6%	81.1%	88.4%	84.6%	87.6%	83.4%
	Quintile 2	86.2%	81.9%	87.2%	84.4%	89.0%	87.8%
	Quintile 3	87.1%	82.4%	89.2%	87.7%	89.2%	87.4%
	Quintile 4	88.5%	83.5%	91.7%	90.2%	89.8%	87.8%
	Quintile 5	88.9%	86.5%	92.2%	91.1%	91.9%	90.7%
Average offer rate	Quintile 1	84.4%	83.3%	88.4%	85.7%	88.6%	84.6%
	Quintile 2	86.9%	83.0%	89.2%	86.3%	89.5%	88.0%
	Quintile 3	87.1%	82.4%	89.7%	88.2%	89.3%	86.9%
	Quintile 4	88.1%	84.1%	91.1%	89.6%	89.5%	88.3%
	Quintile 5	88.9%	85.6%	91.9%	90.5%	91.8%	90.4%
Percentage point difference between offer rate and average offer rate	Quintile 1	-0.8	-2.2	-0.0	-1.1	-0.9	-1.3
	Quintile 2	-0.7	-1.1	-2.0	-1.9	-0.4	-0.2
	Quintile 3	-0.1	0.0	-0.5	-0.4	-0.1	0.5
	Quintile 4	0.4	-0.6	0.7	0.6	0.3	-0.4
	Quintile 5	0.0	0.9	0.3	0.5	0.1	0.4
Contribution of group to the average offer rate	Quintile 1	0.155	0.151	0.141	0.149	0.144	0.149
	Quintile 2	0.181	0.194	0.201	0.196	0.189	0.188
	Quintile 3	0.260	0.263	0.263	0.260	0.265	0.253
	Quintile 4	0.342	0.340	0.335	0.338	0.345	0.331
	Quintile 5	0.470	0.474	0.454	0.434	0.428	0.426

P.9 18 year old offer rate by POLAR3 quintile

Note: The line for a group is not plotted when that group made fewer than 10 applications in any of the years from 2010-2015.

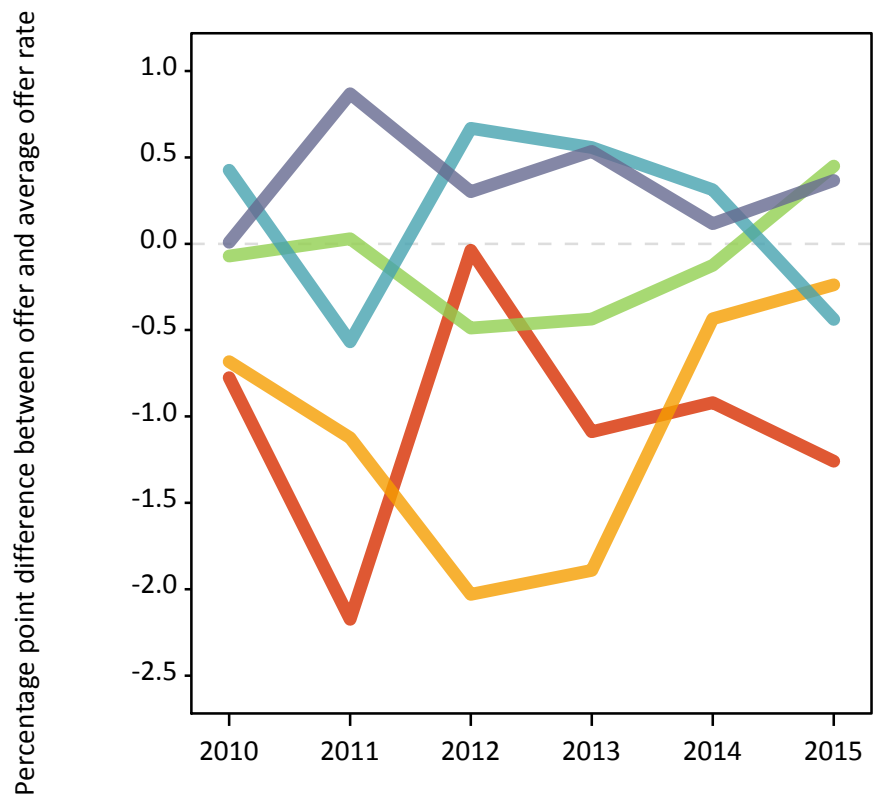
- Quintile 1
- Quintile 2
- Quintile 3
- Quintile 4
- Quintile 5



P.10 Percentage point difference between 18 year old offer rate and average offer rate by POLAR3 quintile

Note: The line for a group is not plotted when that group made fewer than 50 applications in any of the years from 2010-2015.

- Quintile 1
- Quintile 2
- Quintile 3
- Quintile 4
- Quintile 5



P.11 18 year old applicants by ethnic group

Statistic	Ethnic group	2010	2011	2012	2013	2014	2015
June deadline applicants	Asian	1,050	955	1,040	980	995	1,365
	Black	305	265	310	315	320	410
	Mixed	310	300	325	335	390	510
	White	4,215	4,210	4,535	4,610	5,065	5,680
	Other	135	110	155	150	160	250
Placed June deadline applicants	Asian	115	160	85	135	140	170
	Black	30	30	30	35	55	40
	Mixed	35	50	45	40	65	75
	White	705	720	650	805	930	1,000
	Other	20	20	20	25	25	35
All placed applicants	Asian	150	180	130	175	150	190
	Black	35	30	50	40	55	45
	Mixed	40	60	60	50	65	80
	White	810	805	820	860	955	1,045
	Other	30	25	25	30	25	35
June deadline applicants per 10,000 population	Asian	170.0	151.5	160.4	148.3	146.7	192.9
	Black	116.9	96.6	110.4	105.4	105.9	129.2
	Mixed	133.4	123.9	124.0	124.6	135.2	165.1
	White	62.8	65.0	70.3	73.2	82.1	91.2
	Other	174.0	133.3	174.0	167.6	174.1	258.6
Placed June deadline applicants per 10,000 population	Asian	18.9	25.4	13.3	20.2	20.8	23.9
	Black	11.5	10.2	11.0	11.1	17.5	12.6
	Mixed	15.1	20.6	16.5	14.8	22.6	25.0
	White	10.5	11.1	10.0	12.8	15.0	16.0
	Other	27.3	27.2	21.5	27.6	27.9	34.3
All placed applicants per 10,000 population	Asian	24.3	28.2	19.9	26.5	22.4	27.0
	Black	13.8	10.6	18.1	13.8	18.1	13.5
	Mixed	17.3	25.6	22.3	17.8	23.3	26.3
	White	12.0	12.5	12.7	13.7	15.5	16.8
	Other	36.4	33.3	28.3	30.9	27.9	36.3

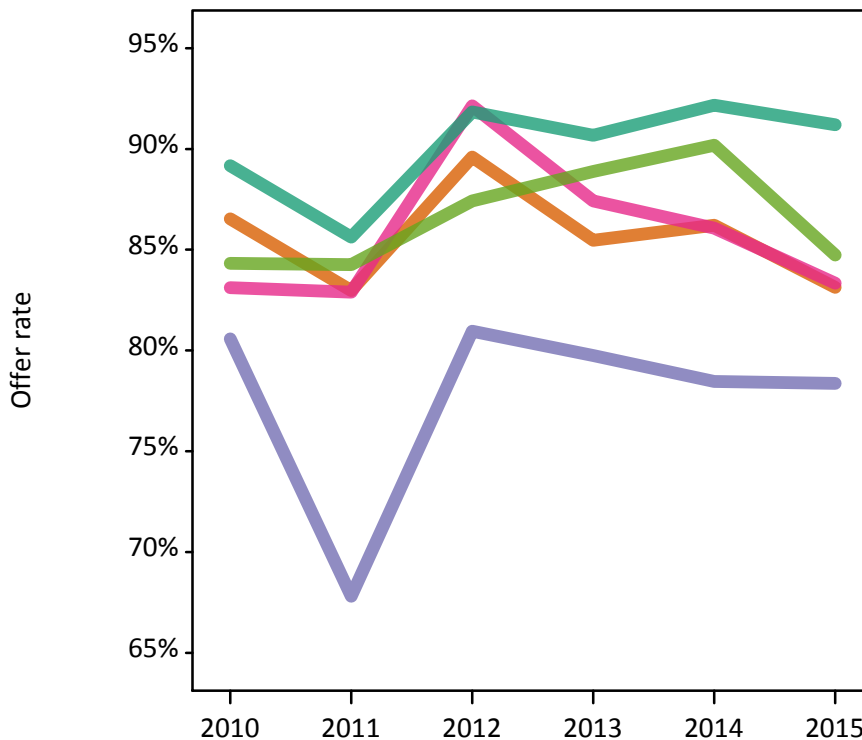
P.12 18 year old applications by ethnic group

Statistic	Ethnic group	2010	2011	2012	2013	2014	2015
June deadline applications	Asian	1,060	965	1,050	990	1,010	1,375
	Black	310	265	315	315	325	415
	Mixed	315	305	330	340	400	515
	White	4,275	4,260	4,610	4,685	5,185	5,810
	Other	135	110	160	155	165	250
Offers	Asian	920	800	940	845	870	1,145
	Black	250	180	255	250	255	325
	Mixed	260	250	305	300	345	430
	White	3,815	3,645	4,235	4,250	4,780	5,295
	Other	115	90	140	135	145	210
Offer rate	Asian	86.5%	83.0%	89.6%	85.5%	86.2%	83.1%
	Black	80.6%	67.8%	81.0%	79.7%	78.5%	78.4%
	Mixed	83.1%	82.9%	92.1%	87.4%	86.1%	83.3%
	White	89.2%	85.6%	91.8%	90.7%	92.2%	91.2%
	Other	84.3%	84.3%	87.4%	88.9%	90.2%	84.7%
Average offer rate	Asian	87.1%	84.3%	90.1%	85.6%	87.1%	83.2%
	Black	80.7%	70.6%	82.9%	80.7%	82.8%	79.5%
	Mixed	85.4%	83.8%	91.5%	88.6%	87.0%	85.2%
	White	88.9%	85.2%	91.6%	90.5%	91.7%	90.9%
	Other	85.6%	81.1%	87.3%	87.6%	88.3%	85.2%
Percentage point difference between offer rate and average offer rate	Asian	-0.5	-1.3	-0.5	-0.2	-0.9	-0.1
	Black	-0.1	-2.8	-2.0	-1.0	-4.4	-1.1
	Mixed	-2.3	-0.9	0.6	-1.2	-1.0	-1.8
	White	0.3	0.4	0.2	0.2	0.5	0.3
	Other	-1.2	3.2	0.2	1.3	1.9	-0.4
Contribution of group to the average offer rate	Asian	0.368	0.363	0.347	0.335	0.314	0.310
	Black	0.185	0.217	0.170	0.181	0.206	0.172
	Mixed	0.150	0.156	0.135	0.125	0.152	0.160
	White	0.776	0.791	0.775	0.776	0.788	0.752
	Other	0.147	0.140	0.142	0.144	0.139	0.122

P.13 18 year old offer rate by ethnic group

Note: The line for a group is not plotted when that group made fewer than 10 applications in any of the years from 2010-2015.

- Asian
- Black
- Mixed
- White
- Other



P.14 Percentage point difference between 18 year old offer rate and average offer rate by ethnic group

Note: The line for a group is not plotted when that group made fewer than 50 applications in any of the years from 2010-2015.

- Asian
- Black
- Mixed
- White
- Other



P.15 Applicants (all ages)

Statistic	2010	2011	2012	2013	2014	2015
June deadline applicants	9,770	9,530	9,255	9,575	10,545	12,205
Placed June deadline applicants	1,500	1,580	1,270	1,455	1,730	1,840
All placed applicants	1,735	1,780	1,650	1,675	1,840	1,970

P.16 Applications (all ages)

Statistic	2010	2011	2012	2013	2014	2015
June deadline applications	9,980	9,750	9,430	9,795	10,830	12,465
Offers	7,705	7,235	7,770	7,745	8,955	10,235
Offer rate	77.2%	74.2%	82.4%	79.1%	82.7%	82.1%

P.17 Applicants (all ages) by sex

Statistic	Sex	2010	2011	2012	2013	2014	2015
June deadline applicants	Men	3,975	3,975	3,925	3,820	4,325	5,125
	Women	5,795	5,555	5,330	5,750	6,220	7,080
Placed June deadline applicants	Men	610	670	515	550	660	730
	Women	890	910	760	910	1,075	1,110
All placed applicants	Men	715	765	690	655	705	780
	Women	1,020	1,010	960	1,020	1,130	1,190

P.18 Applications (all ages) by sex

Statistic	Sex	2010	2011	2012	2013	2014	2015
June deadline applications	Men	4,070	4,070	4,005	3,915	4,445	5,235
	Women	5,910	5,680	5,425	5,880	6,380	7,230
Offers	Men	3,160	3,045	3,230	3,005	3,585	4,120
	Women	4,545	4,190	4,535	4,740	5,370	6,115
Offer rate	Men	77.6%	74.8%	80.7%	76.8%	80.7%	78.7%
	Women	76.9%	73.8%	83.6%	80.6%	84.1%	84.6%

P.19 Applicants (all ages) by POLAR3 quintile

Statistic	POLAR3 quintile	2010	2011	2012	2013	2014	2015
June deadline applicants	Quintile 1	495	495	485	580	620	705
	Quintile 2	955	960	920	1,055	1,225	1,320
	Quintile 3	1,865	1,775	1,765	1,805	2,050	2,320
	Quintile 4	2,590	2,515	2,440	2,565	2,795	3,370
	Quintile 5	3,815	3,750	3,615	3,535	3,825	4,445
Placed June deadline applicants	Quintile 1	80	75	85	105	125	95
	Quintile 2	130	155	130	155	195	235
	Quintile 3	250	285	225	260	315	335
	Quintile 4	440	405	345	395	485	515
	Quintile 5	595	650	485	545	610	650
All placed applicants	Quintile 1	95	80	100	110	125	100
	Quintile 2	145	170	160	170	205	245
	Quintile 3	275	315	300	305	325	355
	Quintile 4	510	455	435	455	510	550
	Quintile 5	700	740	640	630	665	715

P.20 Applications (all ages) by POLAR3 quintile

Statistic	POLAR3 quintile	2010	2011	2012	2013	2014	2015
June deadline applications	Quintile 1	510	505	500	600	635	730
	Quintile 2	970	980	940	1,075	1,250	1,345
	Quintile 3	1,905	1,830	1,790	1,840	2,095	2,380
	Quintile 4	2,640	2,555	2,485	2,625	2,875	3,430
	Quintile 5	3,900	3,835	3,680	3,620	3,935	4,540
Offers	Quintile 1	355	345	395	440	515	560
	Quintile 2	720	690	730	815	995	1,090
	Quintile 3	1,400	1,300	1,435	1,420	1,680	1,900
	Quintile 4	2,045	1,880	2,065	2,110	2,365	2,790
	Quintile 5	3,145	2,990	3,115	2,940	3,370	3,860
Offer rate	Quintile 1	69.9%	67.8%	79.3%	73.2%	80.5%	77.1%
	Quintile 2	74.4%	70.4%	77.5%	75.8%	79.8%	81.0%
	Quintile 3	73.5%	71.0%	80.2%	77.2%	80.1%	79.8%
	Quintile 4	77.3%	73.6%	83.2%	80.4%	82.4%	81.4%
	Quintile 5	80.7%	78.0%	84.7%	81.2%	85.7%	85.1%

P.21 Applicants (all ages) by ethnic group

Statistic	Ethnic group	2010	2011	2012	2013	2014	2015
June deadline applicants	Asian	1,755	1,685	1,675	1,590	1,740	2,250
	Black	855	750	695	710	780	860
	Mixed	540	500	475	510	595	760
	White	6,240	6,255	6,020	6,395	7,025	7,785
	Other	270	225	290	280	305	400
Placed June deadline applicants	Asian	225	280	190	200	250	245
	Black	80	95	75	60	90	80
	Mixed	70	85	65	65	90	105
	White	1,055	1,050	890	1,080	1,245	1,335
	Other	40	50	40	45	50	50
All placed applicants	Asian	280	310	275	275	280	285
	Black	90	100	100	80	95	90
	Mixed	80	105	90	75	100	115
	White	1,195	1,180	1,105	1,175	1,300	1,405
	Other	50	55	60	50	50	55

P.22 Applications (all ages) by ethnic group

Statistic	Ethnic group	2010	2011	2012	2013	2014	2015
June deadline applications	Asian	1,790	1,715	1,690	1,620	1,775	2,280
	Black	865	760	700	715	795	870
	Mixed	550	510	490	520	610	770
	White	6,385	6,410	6,145	6,560	7,235	7,985
	Other	275	230	300	290	310	400
Offers	Asian	1,400	1,305	1,380	1,250	1,430	1,750
	Black	440	370	425	420	470	540
	Mixed	395	365	410	405	490	595
	White	5,180	4,950	5,245	5,395	6,255	6,925
	Other	200	160	230	215	240	305
Offer rate	Asian	78.3%	76.0%	81.7%	77.0%	80.4%	76.8%
	Black	50.7%	48.4%	60.8%	58.9%	59.2%	61.7%
	Mixed	72.1%	71.8%	83.1%	77.4%	80.3%	77.3%
	White	81.1%	77.2%	85.4%	82.2%	86.5%	86.7%
	Other	74.0%	69.7%	77.2%	75.3%	77.7%	76.1%

Technical Notes and Definitions

UCAS undergraduate scheme

Adjustment

Adjustment allows applicants who have met and exceeded the terms of their conditional firm offer to seek and find a place at another provider whilst keeping their place at their original firm choice provider.

Clearing

Clearing is a route for applicants that are not placed and holding no offers to find a place on courses with vacancies.

Cycle year

The UCAS application cycle which runs from September to October the following year. For example the 2015 cycle runs from September 2014 through to October 2015.

End of cycle

The point in the cycle to which the numbers in this report refer, and the point at which the cycle is closed such that no more applications or offers can be made, and no more applicants can be placed. Numbers reported at the end of cycle exclude information on a small number of applicants who cancelled during the cycle.

Extra

Applicants who are unsuccessful in obtaining an offer or decline all offers may be eligible to apply through Extra, where they can apply to one further course at a time. Extra operates from 25 February until early July. It provides applicants who are eligible the possibility of obtaining an offer before exam results are published and Clearing starts.

June 30 deadline

The deadline for main scheme applications. Applicants who apply after this date will go directly into Clearing.

Record of Prior Acceptance (RPA)

RPA is an acceptance route used when a provider informs UCAS of applicants it has accepted outside of the normal application process (e.g. individuals who have applied directly to the provider).

Reporting groups

Ethnic group

High level grouping of ethnic origin as declared by the applicant: 'White', 'Black', 'Asian', 'Mixed', 'Other', 'Unknown'. Applicants who declare themselves as 'Unknown' ethnic origin are not reported in these tables, but are included in the associated csv data file.

POLAR3 quintile

Developed by HEFCE, POLAR3 classifies small areas across the UK into five groups according to their level of young participation in Higher Education. Each of these groups represents around 20 per cent of young people and is ranked from Quintile 1 (areas with the lowest young participation rates, considered as the most disadvantaged) to Quintile 5 (highest young participation rates, considered most advantaged). POLAR3 is based on the participation rates of young people between 2005 and 2009 who entered Higher Education between 2005-06 and 2010-11, therefore is most suitable for applicants aged 19 and under. These groups are assigned using the postcode declared by the applicant at the time of their application. If a UK postcode is invalid, considered unsafe for measurement or there is no link to Census geography possible then the applicant is not assigned to a quintile. Applicants with no POLAR3 quintile are not reported.

Sex

Sex as declared by the applicant.

SIMD quintile

Scottish index of multiple deprivation (SIMD) for 2012 identifies small area concentrations of multiple deprivation across all of Scotland, providing a relative measure of deprivation amongst 6505 small areas (data zones) based on 7 socio-economic domains. These small areas are classified into five groups ranked from Quintile 1 (considered the most deprived) to Quintile 5 (considered least deprived), with equal populations in each quintile. Quintiles are assigned using the postcode declared by the applicant, applicants declaring invalid postcodes are classified as 'Not assigned' and are not reported.

SIMD is only defined for applicants domiciled in Scotland, therefore any applicants domiciled outside of Scotland cannot be assigned to an SIMD quintile and so are not reported for this measure.

SIMD is only reported for providers in Scotland. Application and entry rates by SIMD are reported in the 2015 End of Cycle Report and the 2016 cycle January deadline application rate report.

Statistics reported in the tables

All placed applicants

The number of applicants placed for entry into higher education at the provider through one of their choices, including any choices made through Extra, or via Adjustment, Clearing or RPA.

All placed applicants per 10,000 population

The number of total UK domiciled 18 year old placed applicants for entry into higher education at the provider divided by the number of UK 18 year olds in the population, multiplied by 10,000. This gives the number of 18 year olds, for every 10,000 in the population, that were placed at the provider through one of their choices, including any choices made through Extra, or via Adjustment, Clearing or RPA. It is an alternative way of expressing the entry rate to a provider. By referencing the underlying population this statistic shows how the number of placed applicants is changing in relation to the available pool of potential applicants and so gives the chance that somebody from the group will be placed at a provider.

This statistic is only reported for 18 year olds.

Average offer rate

The offer rate that you might expect if the predicted grades and subject choice of applicants were the only factors that influenced whether an applicant was made an offer by the provider. The average offer rate is calculated by dividing applicants according to their specific combination of grades (for A levels the best three predicted grades are used, for BTECs, International Baccalaureate and Scottish Highers and Advanced Highers, predicted grades along with any grades already achieved upon applying are used) and subject choice. For each combination the number of main scheme offers is divided by the number of main scheme applications, to give an overall offer rate. This is then multiplied by the number of applications made by the group for which the average offer rate is being calculated (for example POLAR3 quintile 1), to give an average number of offers for that group. These average number of offers are then added together across all combinations of predicted grade and subject and divided by the number of main scheme applications from the group to give the average offer rate.

The average offer rate does not attempt to control for any other factors that may play a part in the decision to make an offer, such as the subject of the qualifications studied, their relevance to a course, or the grade in each subject; higher numbers of A levels being studied; the exact profile of grades predicted; personal statements; teacher references; interviews; or any other criteria (such as work experience or portfolios) that may be part of the admissions decision.

This statistic is only reported for 18 year olds.

Contribution of group to the average offer rate

The way in which the average offer rate is defined means that the pattern of application and offers of a group (for example POLAR3 quintile 1) will always contribute, in part, to the average offer rate for that group. When this contribution is large, the average offer rate will mainly reflect the patterns for the group, meaning that the value of the average offer rate will be similar to the offer rate, the percentage point difference statistic will be small, and any real difference between the offer rate and what might be expected given the predicted grades and subject choices of the applicants will be difficult to detect.

Values of the contribution of group to the average offer rate range between 0 and 1. The closer the value is to 1 the greater the contribution a group makes to its own average offer rate.

This statistic is only reported for 18 year olds.

Placed June deadline applicants

An applicant who has been placed for entry into higher education at the provider through a June deadline application.

Placed June deadline applicants per 10,000 population

The number of UK domiciled 18 year old placed June deadline applicants at the provider divided by the number of UK 18 year olds in the population, multiplied by 10,000. This gives the number of 18 year olds, for every 10,000 in the population, that were placed at the provider through one of their June deadline applications. It is an alternative way of expressing the entry rate to a provider, but for placed June deadline applicants only. By referencing the underlying population this statistic shows how the number of placed June deadline applicants is changing in relation to the available pool of potential 18 year old applicants and so gives the chance that somebody from the group will be placed at a provider through a June deadline application.

This statistic is only reported for 18 year olds.

June deadline applications

An application (or choice) to a course in higher education to the provider that is made by the June 30 deadline. Each applicant can make up to five choices this way. The number of June deadline applications does not include choices made through the following routes: Clearing, Extra, Adjustment and RPAs. Applications made to October deadline courses received after the October deadline are not included in these statistics.

June deadline applicants

The number of applicants that made at least one application to the provider by the June 30 deadline.

June deadline applicants per 10,000 population

The number of UK domiciled 18 year old June deadline applicants to the provider divided by the number of UK 18 year olds in the population, multiplied by 10,000. This gives the number of 18 year olds, for every 10,000 in the population, who applied by the June 30 deadline. It is equivalent to the application rate. By referencing the underlying population this statistic shows how the number of June deadline applicants is changing in relation to the available pool of potential 18 year old applicants and so gives the chance that somebody from the group will apply to a provider by the June 30 deadline.

This statistic is only reported for 18 year olds.

Offers

An offer is defined as a provider's decision in response to an application to offer a place to an applicant, often subject to the applicant satisfying academic and/or other criteria, via a June deadline application (i.e. does not cover choices made through the following routes: Clearing, Extra, Adjustment and RPAs).

Offer rate

The number of offers made divided by the number of June deadline applications. This gives the proportion of all June deadline applications to the provider that received an offer.

Percentage point difference between offer rate and average offer rate

The offer rate minus the average offer rate.

The percentage point difference can be compared to the expected range of statistical variation resulting from the calculation of the average offer rate using the Average Offer Rate Lookup Table. Where the value of the percentage point difference lies outside of this range, the percentage point difference may be considered to represent a real difference between the offer rate and the average offer rate.

Other definitions

Age

This analysis uses country-specific age definitions that align with the cut off points for school and college cohorts within the different administrations of the UK. For England and Wales, ages are defined on the 31 August, for Northern Ireland on the 1 July and for Scotland on the 28 February the following year. Defining ages in this way matches the assignment of children to school cohorts. For applicants outside of the UK a cohort cut off of 31 August has been used.

Provider

A higher education provider - a university or college.

UK domiciled

Declared area of permanent residence within England, Northern Ireland, Scotland and Wales. Applicants from the Channel Islands and Isle of Man are not included.