

Northern Irish providers

Cycle years: 2011 - 2016

Cycle Reference Point: End of Cycle

Applicant coverage: UK domiciled

Reporting groups: Sex, POLAR3, ethnic group

Applicant statistics: June deadline applicants, placed June deadline applicants, all placed applicants, June deadline applicants per 10,000 population, placed June deadline applicants per 10,000 population, all placed applicants per 10,000 population

Application statistics: June deadline applications, offers, offer rate, average offer rate, percentage point difference between offer rate and average offer rate, contribution of group to the average offer rate

Non-disclosure controls: To avoid the disclosure of information about any individual the following measures are taken

- Applicants, placed applicants, applications and offers are rounded to the nearest 5.
- Applicants/placed applicants per 10,000 population figures are reported as 0 if the applicant/placed applicant figures are rounded to 0.
- All statistics related to the offer rate are not reported when the number of applications for a group is less than 10. The percentage point difference between the offer rate and the average offer rate is not reported when the number of applications for a group is less than 50.
- Offer rates are reported as 0% if there are fewer than 5 offers, and 100% if the number of offers is within 5 of the number of applications. When the offer rate is reported as 0% or 100%, it is reported in italics.

Contents:

18 year old applicants:	P.1
18 year old applications:	P.2
18 year old applicants by sex:	P.3
18 year old applications by sex:	P.4
18 year old applicants by POLAR3 quintile:	P.7
18 year old applications by POLAR3 quintile:	P.8
18 year old applicants by ethnic group:	P.11
18 year old applications by ethnic group:	P.12
Applicants (all ages):	P.15
Applications (all ages):	P.16
Applicants (all ages) by sex:	P.17
Applications (all ages) by sex:	P.18
Applicants (all ages) by POLAR3 quintile:	P.19
Applications (all ages) by POLAR3 quintile:	P.20
Applicants (all ages) by ethnic group:	P.21
Applications (all ages) by ethnic group:	P.22

P.1 18 year old applicants

Statistic	2011	2012	2013	2014	2015	2016
June deadline applicants	11,795	12,060	11,980	12,080	12,540	12,205
Placed June deadline applicants	5,300	5,595	5,805	5,575	5,080	5,130
All placed applicants	5,610	5,975	6,195	5,960	5,340	5,510
June deadline applicants per 10,000 population	153.2	155.9	157.4	160.4	163.7	162.8
Placed June deadline applicants per 10,000	68.8	72.3	76.3	74.0	66.3	68.5
All placed applicants per 10,000 population	72.9	77.2	81.4	79.1	69.7	73.5

P.2 18 year old applications

Statistic	2011	2012	2013	2014	2015	2016
June deadline applications	32,850	34,990	34,330	34,645	35,895	33,765
Offers	25,960	28,245	28,570	29,375	30,105	28,035
Offer rate	79.0%	80.7%	83.2%	84.8%	83.9%	83.0%

P.3 18 year old applicants by sex

Statistic	Sex	2011	2012	2013	2014	2015	2016
June deadline applicants	Men	5,225	5,260	5,310	5,355	5,420	5,320
	Women	6,575	6,805	6,665	6,730	7,120	6,885
Placed June deadline applicants	Men	2,475	2,550	2,740	2,575	2,275	2,395
	Women	2,825	3,045	3,065	3,000	2,800	2,735
All placed applicants	Men	2,605	2,720	2,890	2,745	2,375	2,545
	Women	3,005	3,250	3,300	3,215	2,960	2,965
June deadline applicants per 10,000 population	Men	132.8	132.6	136.1	138.3	138.1	138.5
	Women	174.5	180.5	179.9	183.8	190.6	188.4
Placed June deadline applicants per 10,000 population	Men	62.9	64.2	70.2	66.5	58.0	62.4
	Women	75.0	80.8	82.8	82.0	75.0	74.9
All placed applicants per 10,000 population	Men	66.2	68.6	74.1	71.0	60.6	66.3
	Women	79.8	86.3	89.1	87.8	79.2	81.2

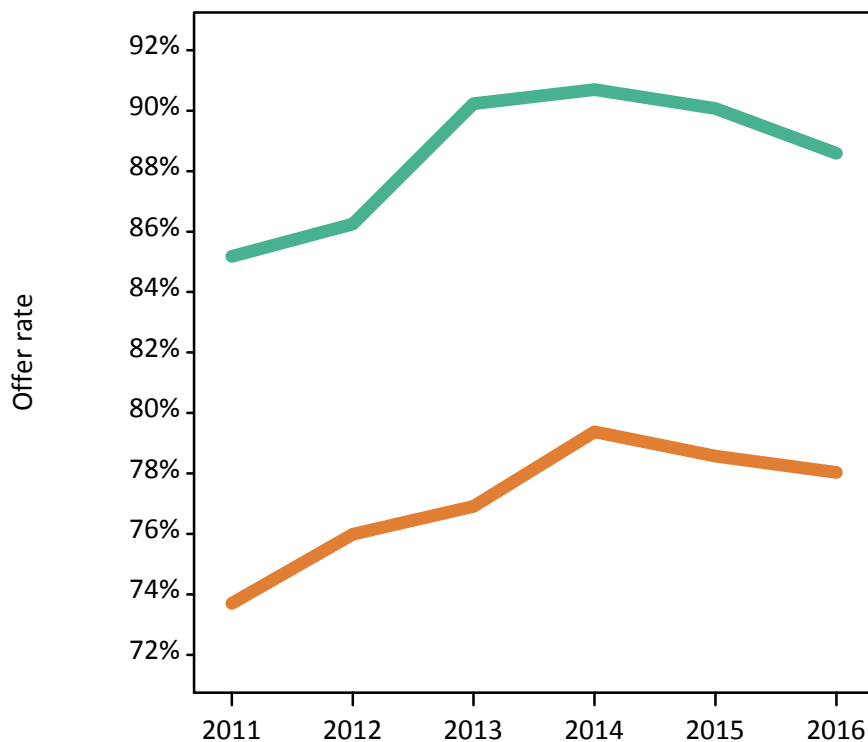
P.4 18 year old applications by sex

Statistic	Sex	2011	2012	2013	2014	2015	2016
June deadline applications	Men	15,220	16,145	16,260	16,570	16,495	16,000
	Women	17,635	18,850	18,070	18,075	19,400	17,765
Offers	Men	12,960	13,925	14,670	15,030	14,860	14,170
	Women	12,995	14,320	13,900	14,345	15,245	13,865
Offer rate	Men	85.2%	86.3%	90.2%	90.7%	90.1%	88.6%
	Women	73.7%	76.0%	76.9%	79.4%	78.6%	78.0%
Average offer rate	Men	85.5%	86.7%	90.6%	91.1%	90.4%	89.2%
	Women	73.5%	75.6%	76.6%	79.0%	78.3%	77.4%
Percentage point difference between offer rate and average offer rate	Men	-0.3	-0.4	-0.4	-0.4	-0.3	-0.7
	Women	0.2	0.4	0.3	0.3	0.2	0.6
Contribution of group to the average offer rate	Men	0.621	0.623	0.643	0.639	0.621	0.633
	Women	0.673	0.677	0.679	0.669	0.678	0.670

P.5 18 year old offer rate by sex

Note: The line for a group is not plotted when that group made fewer than 10 applications in any of the years from 2011-2016.

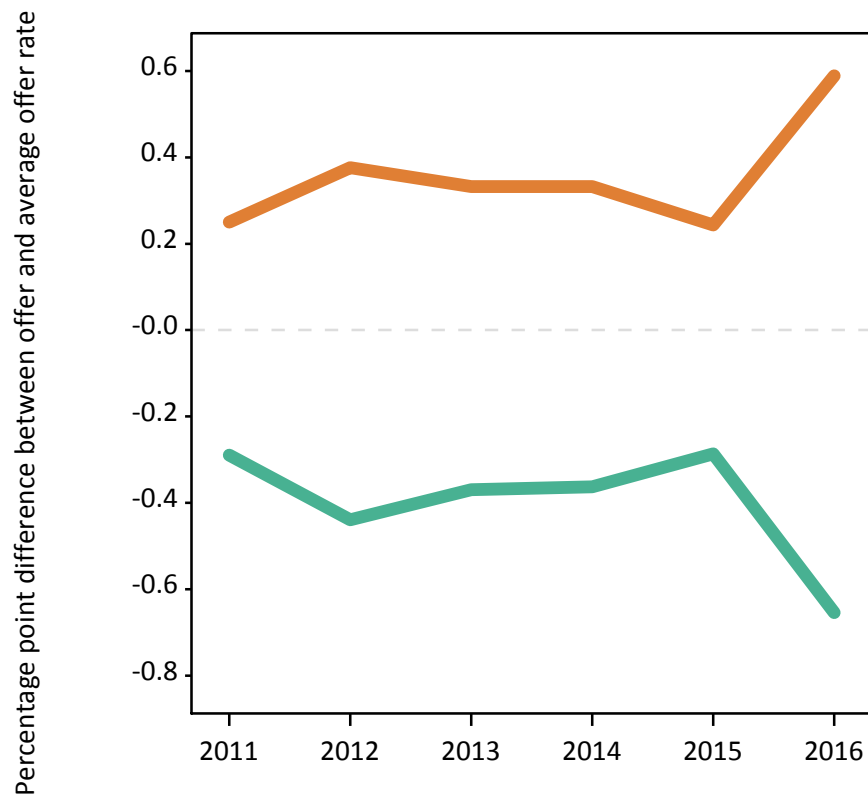
Men
Women



P.6 Percentage point difference between 18 year old offer rate and average offer rate by sex

Note: The line for a group is not plotted when that group made fewer than 50 applications in any of the years from 2011-2016.

Men
Women



P.7 18 year old applicants by POLAR3 quintile

Statistic	POLAR3 quintile	2011	2012	2013	2014	2015	2016
June deadline applicants	Quintile 1	780	810	800	860	905	865
	Quintile 2	1,220	1,215	1,170	1,285	1,295	1,340
	Quintile 3	1,795	1,890	1,920	1,930	2,005	2,055
	Quintile 4	3,530	3,510	3,465	3,530	3,660	3,540
	Quintile 5	4,440	4,610	4,600	4,460	4,655	4,360
Placed June deadline applicants	Quintile 1	305	325	340	360	295	325
	Quintile 2	475	505	555	550	475	525
	Quintile 3	815	890	930	895	840	820
	Quintile 4	1,625	1,700	1,760	1,700	1,555	1,595
	Quintile 5	2,065	2,170	2,205	2,060	1,905	1,850
All placed applicants	Quintile 1	315	345	365	385	310	345
	Quintile 2	510	545	590	595	495	575
	Quintile 3	860	955	985	950	895	895
	Quintile 4	1,720	1,820	1,880	1,825	1,635	1,705
	Quintile 5	2,195	2,305	2,360	2,200	1,995	1,975
June deadline applicants per 10,000 population	Quintile 1	54.2	56.9	57.3	61.9	64.7	63.9
	Quintile 2	81.0	81.1	79.3	87.8	87.1	92.8
	Quintile 3	116.7	122.5	125.8	128.2	130.6	136.8
	Quintile 4	225.4	221.3	221.6	229.0	233.7	229.3
	Quintile 5	268.4	274.5	278.1	273.4	278.1	263.8
Placed June deadline applicants per 10,000 population	Quintile 1	21.2	22.8	24.3	25.9	21.0	24.0
	Quintile 2	31.7	33.7	37.8	37.5	32.0	36.4
	Quintile 3	52.9	57.5	60.8	59.5	54.7	54.5
	Quintile 4	103.9	107.2	112.7	110.2	99.5	103.2
	Quintile 5	124.8	129.0	133.4	126.4	113.9	111.9
All placed applicants per 10,000 population	Quintile 1	22.1	24.1	26.3	27.5	22.1	25.6
	Quintile 2	33.9	36.2	40.1	40.6	33.3	39.8
	Quintile 3	55.8	61.8	64.5	63.3	58.2	59.5
	Quintile 4	109.8	114.7	120.1	118.3	104.4	110.3
	Quintile 5	132.5	137.2	142.7	134.8	119.3	119.5

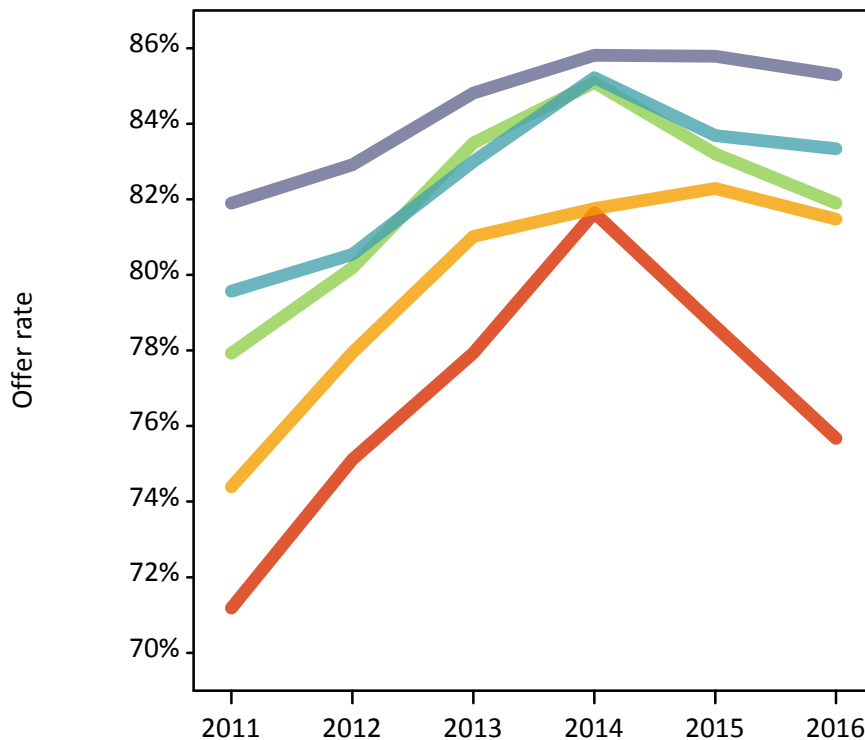
P.8 18 year old applications by POLAR3 quintile

Statistic	POLAR3 quintile	2011	2012	2013	2014	2015	2016
June deadline applications	Quintile 1	2,285	2,445	2,390	2,460	2,650	2,410
	Quintile 2	3,360	3,450	3,375	3,605	3,640	3,620
	Quintile 3	5,095	5,660	5,595	5,550	5,935	5,770
	Quintile 4	10,095	10,440	10,215	10,400	10,615	10,095
	Quintile 5	11,920	12,945	12,680	12,570	13,000	11,745
Offers	Quintile 1	1,630	1,840	1,860	2,010	2,085	1,825
	Quintile 2	2,500	2,690	2,735	2,950	2,995	2,950
	Quintile 3	3,970	4,535	4,675	4,720	4,940	4,725
	Quintile 4	8,030	8,410	8,480	8,865	8,880	8,415
	Quintile 5	9,760	10,735	10,755	10,785	11,150	10,015
Offer rate	Quintile 1	71.2%	75.1%	77.9%	81.6%	78.6%	75.7%
	Quintile 2	74.4%	77.9%	81.0%	81.8%	82.3%	81.5%
	Quintile 3	77.9%	80.2%	83.5%	85.1%	83.2%	81.9%
	Quintile 4	79.6%	80.5%	83.0%	85.2%	83.7%	83.3%
	Quintile 5	81.9%	82.9%	84.8%	85.8%	85.8%	85.3%
Average offer rate	Quintile 1	72.7%	77.4%	80.4%	83.6%	81.9%	78.9%
	Quintile 2	75.7%	78.7%	82.0%	82.8%	82.6%	81.9%
	Quintile 3	78.3%	80.5%	83.3%	85.1%	83.9%	82.7%
	Quintile 4	79.3%	80.0%	83.0%	84.6%	83.5%	82.9%
	Quintile 5	81.3%	82.5%	84.1%	85.6%	84.9%	84.5%
Percentage point difference between offer rate and average offer rate	Quintile 1	-1.5	-2.3	-2.5	-2.0	-3.2	-3.2
	Quintile 2	-1.3	-0.8	-1.0	-1.0	-0.3	-0.4
	Quintile 3	-0.4	-0.3	0.2	-0.0	-0.7	-0.8
	Quintile 4	0.3	0.5	-0.0	0.6	0.2	0.5
	Quintile 5	0.6	0.4	0.7	0.2	0.9	0.8
Contribution of group to the average offer rate	Quintile 1	0.165	0.152	0.165	0.161	0.158	0.159
	Quintile 2	0.176	0.177	0.165	0.179	0.169	0.170
	Quintile 3	0.221	0.225	0.223	0.221	0.223	0.231
	Quintile 4	0.368	0.353	0.353	0.350	0.343	0.353
	Quintile 5	0.423	0.426	0.424	0.416	0.415	0.402

P.9 18 year old offer rate by POLAR3 quintile

Note: The line for a group is not plotted when that group made fewer than 10 applications in any of the years from 2011-2016.

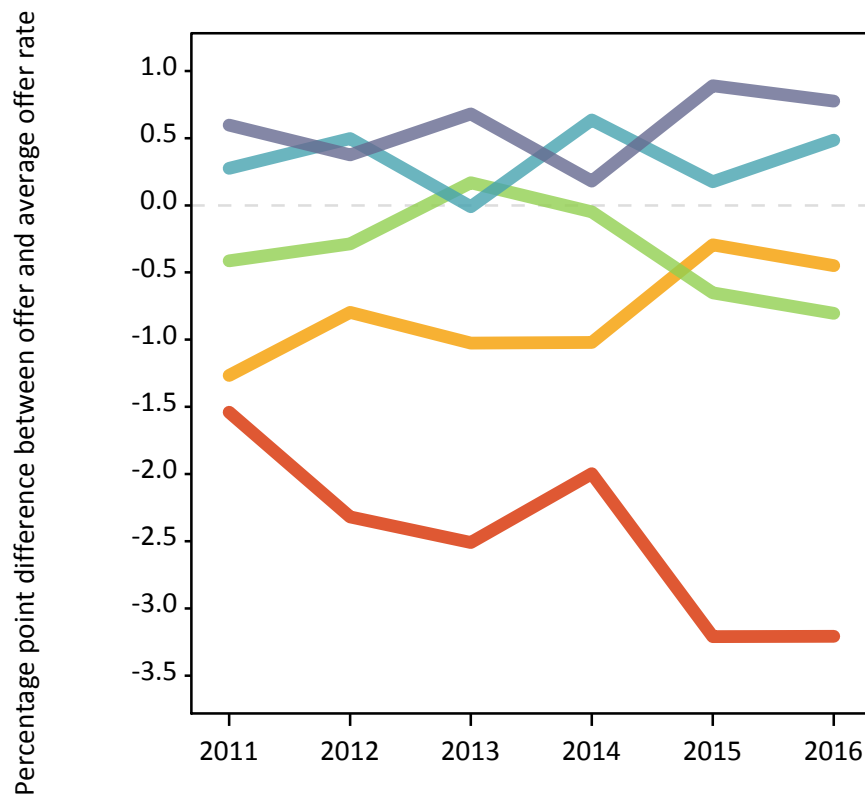
- Quintile 1
- Quintile 2
- Quintile 3
- Quintile 4
- Quintile 5



P.10 Percentage point difference between 18 year old offer rate and average offer rate by POLAR3 quintile

Note: The line for a group is not plotted when that group made fewer than 50 applications in any of the years from 2011-2016.

- Quintile 1
- Quintile 2
- Quintile 3
- Quintile 4
- Quintile 5



P.11 18 year old applicants by ethnic group

Statistic	Ethnic group	2011	2012	2013	2014	2015	2016
June deadline applicants	Asian	120	140	150	205	210	250
	Black	25	35	50	60	55	65
	Mixed	105	115	130	135	160	140
	White	11,505	11,720	11,605	11,630	12,045	11,685
	Other	15	20	20	30	30	25
Placed June deadline applicants	Asian	30	35	35	45	45	55
	Black	0	5	10	10	5	5
	Mixed	25	20	25	30	40	30
	White	5,230	5,515	5,730	5,490	4,975	5,025
	Other	5	5	5	5	5	0
All placed applicants	Asian	35	40	40	45	50	70
	Black	0	10	10	10	10	10
	Mixed	30	25	25	30	40	35
	White	5,530	5,885	6,110	5,865	5,230	5,390
	Other	5	5	5	5	5	0
June deadline applicants per 10,000 population	Asian	19.2	21.9	23.0	30.1	30.0	35.0
	Black	9.1	11.7	17.5	20.1	17.6	21.4
	Mixed	44.2	43.4	47.7	46.6	52.5	44.2
	White	177.7	181.5	184.4	188.5	193.4	193.2
	Other	21.0	20.3	24.3	31.2	29.0	25.2
Placed June deadline applicants per 10,000 population	Asian	4.8	5.4	5.6	6.3	6.5	7.6
	Black	0.0	2.5	2.7	2.6	1.6	1.9
	Mixed	11.1	8.4	8.9	9.7	12.6	10.2
	White	80.8	85.4	91.1	89.0	79.8	83.1
	Other	4.9	6.8	3.3	5.4	4.1	0.0
All placed applicants per 10,000 population	Asian	5.6	6.3	6.4	6.9	6.9	9.4
	Black	0.0	2.8	2.7	3.0	2.5	2.6
	Mixed	12.8	9.2	9.6	11.1	12.6	11.4
	White	85.4	91.1	97.1	95.0	83.9	89.1
	Other	4.9	6.8	3.3	6.4	4.1	0.0

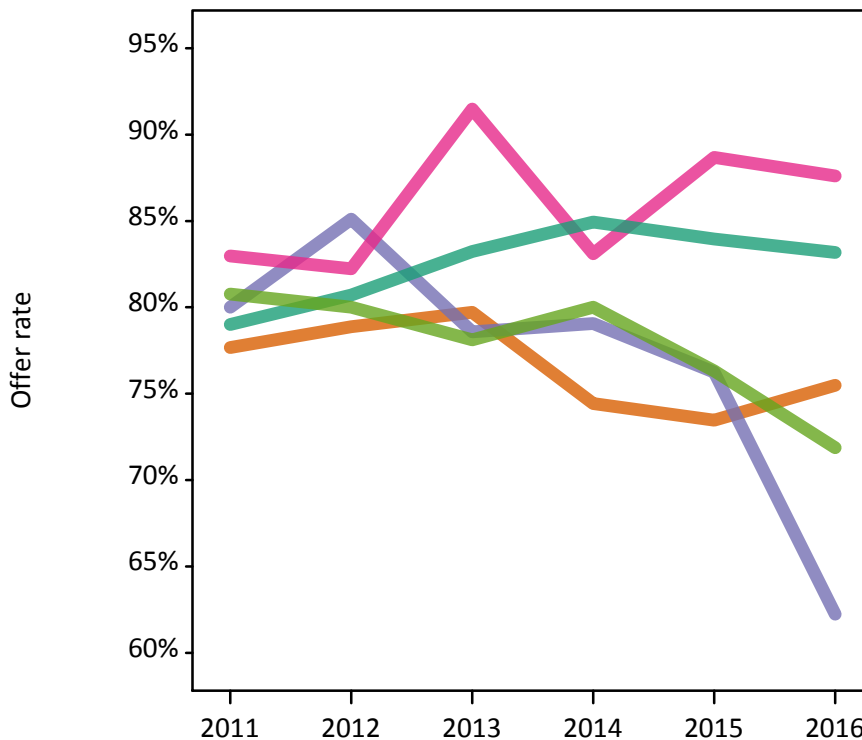
P.12 18 year old applications by ethnic group

Statistic	Ethnic group	2011	2012	2013	2014	2015	2016
June deadline applications	Asian	225	250	275	355	375	415
	Black	40	45	70	85	80	100
	Mixed	190	180	210	220	255	240
	White	32,330	34,420	33,700	33,900	35,065	32,905
	Other	25	30	30	50	40	30
Offers	Asian	175	200	220	265	275	315
	Black	30	40	55	70	60	60
	Mixed	155	150	195	180	225	210
	White	25,540	27,780	28,050	28,795	29,435	27,370
	Other	20	25	25	40	30	25
Offer rate	Asian	77.7%	78.9%	79.7%	74.4%	73.5%	75.5%
	Black	80.0%	85.1%	78.6%	79.1%	76.3%	62.2%
	Mixed	83.0%	82.2%	91.5%	83.1%	88.7%	87.6%
	White	79.0%	80.7%	83.2%	84.9%	83.9%	83.2%
	Other	80.8%	80.0%	78.1%	80.0%	76.3%	71.9%
Average offer rate	Asian	79.7%	82.2%	79.7%	79.1%	77.1%	80.1%
	Black	89.3%	77.6%	82.3%	80.0%	75.5%	68.8%
	Mixed	82.5%	84.1%	91.1%	84.8%	88.4%	86.7%
	White	79.0%	80.7%	83.2%	84.9%	83.9%	83.1%
	Other	86.3%	85.8%	88.1%	81.4%	70.1%	69.6%
Percentage point difference between offer rate and average offer rate	Asian	-2.1	-3.3	-0.0	-4.6	-3.7	-4.6
	Black	N/A	N/A	-3.7	-1.0	0.8	-6.6
	Mixed	0.5	-1.9	0.4	-1.7	0.2	0.9
	White	0.0	0.0	0.0	0.1	0.0	0.1
	Other	N/A	N/A	N/A	-1.4	N/A	N/A
Contribution of group to the average offer rate	Asian	0.122	0.109	0.105	0.083	0.099	0.119
	Black	0.072	0.139	0.167	0.148	0.182	0.101
	Mixed	0.097	0.103	0.091	0.099	0.090	0.079
	White	0.986	0.985	0.984	0.981	0.979	0.978
	Other	0.138	0.082	0.089	0.070	0.086	0.118

P.13 18 year old offer rate by ethnic group

Note: The line for a group is not plotted when that group made fewer than 10 applications in any of the years from 2011-2016.

- Asian
- Black
- Mixed
- White
- Other



P.14 Percentage point difference between 18 year old offer rate and average offer rate by ethnic group

Note: The line for a group is not plotted when that group made fewer than 50 applications in any of the years from 2011-2016.

- Asian
- Black
- Mixed
- White
- Other



P.15 Applicants (all ages)

Statistic	2011	2012	2013	2014	2015	2016
June deadline applicants	19,180	19,235	20,465	20,880	22,010	21,370
Placed June deadline applicants	8,380	8,670	9,470	9,290	8,940	9,080
All placed applicants	8,915	9,380	10,290	10,540	9,560	9,830

P.16 Applications (all ages)

Statistic	2011	2012	2013	2014	2015	2016
June deadline applications	52,185	53,935	56,860	58,240	60,345	58,765
Offers	37,230	39,915	41,940	43,720	45,135	43,585
Offer rate	71.3%	74.0%	73.8%	75.1%	74.8%	74.2%

P.17 Applicants (all ages) by sex

Statistic	Sex	2011	2012	2013	2014	2015	2016
June deadline applicants	Men	8,465	8,490	8,895	9,105	9,535	9,280
	Women	10,715	10,745	11,570	11,775	12,475	12,095
Placed June deadline applicants	Men	3,915	4,040	4,475	4,355	4,075	4,245
	Women	4,465	4,630	4,995	4,935	4,865	4,830
All placed applicants	Men	4,150	4,395	4,790	4,970	4,305	4,535
	Women	4,765	4,985	5,500	5,570	5,255	5,290

P.18 Applications (all ages) by sex

Statistic	Sex	2011	2012	2013	2014	2015	2016
June deadline applications	Men	23,655	24,860	25,935	26,820	27,285	27,220
	Women	28,535	29,075	30,930	31,420	33,060	31,545
Offers	Men	18,585	19,890	21,735	22,560	22,725	22,305
	Women	18,645	20,025	20,205	21,160	22,410	21,275
Offer rate	Men	78.6%	80.0%	83.8%	84.1%	83.3%	81.9%
	Women	65.3%	68.9%	65.3%	67.3%	67.8%	67.4%

P.19 Applicants (all ages) by POLAR3 quintile

Statistic	POLAR3 quintile	2011	2012	2013	2014	2015	2016
June deadline applicants	Quintile 1	1,490	1,550	1,720	1,805	1,830	1,860
	Quintile 2	2,170	2,145	2,215	2,500	2,570	2,565
	Quintile 3	3,085	3,185	3,485	3,405	3,655	3,635
	Quintile 4	5,630	5,495	5,810	5,965	6,335	6,035
	Quintile 5	6,750	6,805	7,195	7,165	7,565	7,195
Placed June deadline applicants	Quintile 1	580	615	745	740	630	715
	Quintile 2	855	895	975	1,020	985	1,030
	Quintile 3	1,330	1,450	1,585	1,530	1,530	1,470
	Quintile 4	2,500	2,560	2,785	2,725	2,665	2,750
	Quintile 5	3,095	3,140	3,365	3,255	3,110	3,085
All placed applicants	Quintile 1	610	655	805	810	670	770
	Quintile 2	915	970	1,060	1,170	1,050	1,120
	Quintile 3	1,405	1,570	1,720	1,770	1,645	1,600
	Quintile 4	2,665	2,800	3,030	3,095	2,855	2,965
	Quintile 5	3,295	3,370	3,655	3,670	3,315	3,340

P.20 Applications (all ages) by POLAR3 quintile

Statistic	POLAR3 quintile	2011	2012	2013	2014	2015	2016
June deadline applications	Quintile 1	4,285	4,515	5,015	5,200	5,130	5,160
	Quintile 2	5,870	5,925	6,130	6,855	6,950	6,860
	Quintile 3	8,640	9,215	9,815	9,540	10,105	10,140
	Quintile 4	15,530	15,710	16,360	16,920	17,680	17,160
	Quintile 5	17,720	18,450	19,440	19,610	20,335	19,210
Offers	Quintile 1	2,770	3,005	3,320	3,660	3,515	3,450
	Quintile 2	3,925	4,125	4,310	4,865	4,975	4,910
	Quintile 3	5,950	6,775	7,130	7,185	7,540	7,330
	Quintile 4	11,205	11,685	12,175	12,760	13,220	12,845
	Quintile 5	13,295	14,245	14,910	15,170	15,790	14,880
Offer rate	Quintile 1	64.6%	66.5%	66.2%	70.4%	68.6%	66.9%
	Quintile 2	66.8%	69.7%	70.3%	71.0%	71.5%	71.6%
	Quintile 3	68.8%	73.5%	72.7%	75.3%	74.6%	72.3%
	Quintile 4	72.1%	74.4%	74.4%	75.4%	74.8%	74.9%
	Quintile 5	75.0%	77.2%	76.7%	77.4%	77.6%	77.5%

P.21 Applicants (all ages) by ethnic group

Statistic	Ethnic group	2011	2012	2013	2014	2015	2016
June deadline applicants	Asian	250	330	360	475	760	545
	Black	110	135	190	230	235	215
	Mixed	185	185	210	235	285	240
	White	18,550	18,480	19,585	19,810	20,510	20,225
	Other	40	40	70	65	95	65
Placed June deadline applicants	Asian	60	90	85	110	240	125
	Black	15	20	30	50	45	30
	Mixed	50	45	50	55	70	55
	White	8,230	8,490	9,285	9,045	8,530	8,830
	Other	10	10	15	15	20	10
All placed applicants	Asian	70	155	100	265	255	150
	Black	15	40	35	165	50	40
	Mixed	55	50	50	75	70	65
	White	8,730	9,090	10,075	9,965	9,090	9,520
	Other	10	10	15	50	20	15

P.22 Applications (all ages) by ethnic group

Statistic	Ethnic group	2011	2012	2013	2014	2015	2016
June deadline applications	Asian	460	610	615	725	1,110	880
	Black	170	195	285	360	320	330
	Mixed	345	315	365	395	465	445
	White	51,055	52,635	55,385	56,535	58,090	56,830
	Other	70	60	110	110	130	105
Offers	Asian	305	425	425	490	695	585
	Black	85	105	155	200	150	170
	Mixed	245	230	305	300	360	345
	White	36,480	39,030	40,930	42,590	43,700	42,290
	Other	50	40	60	75	70	65
Offer rate	Asian	67.0%	70.1%	69.2%	67.3%	62.5%	66.3%
	Black	49.7%	53.6%	55.1%	56.3%	46.7%	51.5%
	Mixed	71.6%	73.0%	84.1%	75.6%	77.8%	77.2%
	White	71.5%	74.2%	73.9%	75.3%	75.2%	74.4%
	Other	70.0%	64.5%	56.5%	67.6%	55.0%	62.5%

Technical Notes and Definitions

UCAS undergraduate scheme

Adjustment

Adjustment allows applicants who have met and exceeded the terms of their conditional firm offer to seek and find a place at another provider whilst keeping their place at their original firm choice provider.

Clearing

Clearing is a route for applicants that are not placed and holding no offers to find a place on courses with vacancies.

Cycle year

The UCAS application cycle which runs from September to October the following year. For example the 2016 cycle runs from September 2015 through to October 2016.

End of cycle

The point in the cycle to which the numbers in this report refer, and the point at which the cycle is closed such that no more applications or offers can be made, and no more applicants can be placed. Numbers reported at the end of cycle exclude information on a small number of applicants who cancelled during the cycle.

Extra

Applicants who are unsuccessful in obtaining an offer or decline all offers may be eligible to apply through Extra, where they can apply to one further course at a time. Extra operates from 25 February until early July. It provides applicants who are eligible the possibility of obtaining an offer before exam results are published and Clearing starts.

June 30 deadline

The deadline for main scheme applications. Applicants who apply after this date will go directly into Clearing.

Record of Prior Acceptance (RPA)

RPA is an acceptance route used when a provider informs UCAS of applicants it has accepted outside of the normal application process (e.g. individuals who have applied directly to the provider).

Reporting groups

Ethnic group

High level grouping of ethnic origin as declared by the applicant: 'White', 'Black', 'Asian', 'Mixed', 'Other', 'Unknown'. Applicants who declare themselves as 'Unknown' ethnic origin are not reported in these tables, but are included in the associated csv data file.

POLAR3 quintile

Developed by HEFCE, POLAR3 classifies small areas across the UK into five groups according to their level of young participation in Higher Education. Each of these groups represents around 20 per cent of young people and is ranked from Quintile 1 (areas with the lowest young participation rates, considered as the most disadvantaged) to Quintile 5 (highest young participation rates, considered most advantaged). POLAR3 is based on the participation rates of young people between 2005 and 2009 who entered Higher Education between 2005-06 and 2010-11, therefore is most suitable for applicants aged 19 and under. These groups are assigned using the postcode declared by the applicant at the time of their application. If a UK postcode is invalid, considered unsafe for measurement or there is no link to Census geography possible then the applicant is not assigned to a quintile. Applicants with no POLAR3 quintile are not reported.

Sex

Sex as declared by the applicant.

SIMD quintile

Scottish index of multiple deprivation (SIMD) for 2012 identifies small area concentrations of multiple deprivation across all of Scotland, providing a relative measure of deprivation amongst 6505 small areas (data zones) based on 7 socio-economic domains. These small areas are classified into five groups ranked from Quintile 1 (considered the most deprived) to Quintile 5 (considered least deprived), with equal populations in each quintile. Quintiles are assigned using the postcode declared by the applicant, applicants declaring invalid postcodes are classified as 'Not assigned' and are not reported.

SIMD is only defined for applicants domiciled in Scotland, therefore any applicants domiciled outside of Scotland cannot be assigned to an SIMD quintile and so are not reported for this measure.

SIMD is only reported for providers in Scotland. Application and entry rates by SIMD are reported in the 2016 End of Cycle Report and the 2016 cycle January deadline application rate report.

Statistics reported in the tables

All placed applicants

The number of applicants placed for entry into higher education at the provider through one of their choices, including any choices made through Extra, or via Adjustment, Clearing or RPA.

All placed applicants per 10,000 population

The number of total UK domiciled 18 year old placed applicants for entry into higher education at the provider divided by the number of UK 18 year olds in the population, multiplied by 10,000. This gives the number of 18 year olds, for every 10,000 in the population, that were placed at the provider through one of their choices, including any choices made through Extra, or via Adjustment, Clearing or RPA. It is an alternative way of expressing the entry rate to a provider. By referencing the underlying population this statistic shows how the number of placed applicants is changing in relation to the available pool of potential applicants and so gives the chance that somebody from the group will be placed at a provider.

This statistic is only reported for 18 year olds.

Average offer rate

The offer rate that you might expect if the predicted grades and subject choice of applicants were the only factors that influenced whether an applicant was made an offer by the provider. The average offer rate is calculated by dividing applicants according to their specific combination of grades (for A levels the best three predicted grades are used, for BTECs, International Baccalaureate and Scottish Highers and Advanced Highers, predicted grades along with any grades already achieved upon applying are used) and subject choice. For each combination the number of main scheme offers is divided by the number of main scheme applications, to give an overall offer rate. This is then multiplied by the number of applications made by the group for which the average offer rate is being calculated (for example POLAR3 quintile 1), to give an average number of offers for that group. These average number of offers are then added together across all combinations of predicted grade and subject and divided by the number of main scheme applications from the group to give the average offer rate.

The average offer rate does not attempt to control for any other factors that may play a part in the decision to make an offer, such as the subject of the qualifications studied, their relevance to a course, or the grade in each subject; higher numbers of A levels being studied; the exact profile of grades predicted; personal statements; teacher references; interviews; or any other criteria (such as work experience or portfolios) that may be part of the admissions decision.

This statistic is only reported for 18 year olds.

Contribution of group to the average offer rate

The way in which the average offer rate is defined means that the pattern of application and offers of a group (for example POLAR3 quintile 1) will always contribute, in part, to the average offer rate for that group. When this contribution is large, the average offer rate will mainly reflect the patterns for the group, meaning that the value of the average offer rate will be similar to the offer rate, the percentage point difference statistic will be small, and any real difference between the offer rate and what might be expected given the predicted grades and subject choices of the applicants will be difficult to detect.

Values of the contribution of group to the average offer rate range between 0 and 1. The closer the value is to 1 the greater the contribution a group makes to its own average offer rate.

This statistic is only reported for 18 year olds.

Placed June deadline applicants

An applicant who has been placed for entry into higher education at the provider through a June deadline application.

Placed June deadline applicants per 10,000 population

The number of UK domiciled 18 year old placed June deadline applicants at the provider divided by the number of UK 18 year olds in the population, multiplied by 10,000. This gives the number of 18 year olds, for every 10,000 in the population, that were placed at the provider through one of their June deadline applications. It is an alternative way of expressing the entry rate to a provider, but for placed June deadline applicants only. By referencing the underlying population this statistic shows how the number of placed June deadline applicants is changing in relation to the available pool of potential 18 year old applicants and so gives the chance that somebody from the group will be placed at a provider through a June deadline application.

This statistic is only reported for 18 year olds.

June deadline applications

An application (or choice) to a course in higher education to the provider that is made by the June 30 deadline. Each applicant can make up to five choices this way. The number of June deadline applications does not include choices made through the following routes: Clearing, Extra, Adjustment and RPAs. Applications made to October deadline courses received after the October deadline are not included in these statistics.

June deadline applicants

The number of applicants that made at least one application to the provider by the June 30 deadline.

June deadline applicants per 10,000 population

The number of UK domiciled 18 year old June deadline applicants to the provider divided by the number of UK 18 year olds in the population, multiplied by 10,000. This gives the number of 18 year olds, for every 10,000 in the population, who applied by the June 30 deadline. It is equivalent to the application rate. By referencing the underlying population this statistic shows how the number of June deadline applicants is changing in relation to the available pool of potential 18 year old applicants and so gives the chance that somebody from the group will apply to a provider by the June 30 deadline.

This statistic is only reported for 18 year olds.

Offers

An offer is defined as a provider's decision in response to an application to offer a place to an applicant, often subject to the applicant satisfying academic and/or other criteria, via a June deadline application (i.e. does not cover choices made through the following routes: Clearing, Extra, Adjustment and RPAs).

Offer rate

The number of offers made divided by the number of June deadline applications. This gives the proportion of all June deadline applications to the provider that received an offer.

Percentage point difference between offer rate and average offer rate

The offer rate minus the average offer rate.

The percentage point difference can be compared to the expected range of statistical variation resulting from the calculation of the average offer rate using the Average Offer Rate Lookup Table. Where the value of the percentage point difference lies outside of this range, the percentage point difference may be considered to represent a real difference between the offer rate and the average offer rate.

Other definitions

Age

This analysis uses country-specific age definitions that align with the cut off points for school and college cohorts within the different administrations of the UK. For England and Wales, ages are defined on the 31 August, for Northern Ireland on the 1 July and for Scotland on the 28 February the following year. Defining ages in this way matches the assignment of children to school cohorts. For applicants outside of the UK a cohort cut off of 31 August has been used.

Provider

A higher education provider - a university or college.

UK domiciled

Declared area of permanent residence within England, Northern Ireland, Scotland and Wales. Applicants from the Channel Islands and Isle of Man are not included.