

B38 Bishop Grosseteste University

Cycle years: 2011 - 2016

Cycle Reference Point: End of Cycle

Applicant coverage: UK domiciled

Reporting groups: Sex, POLAR3, ethnic group

Applicant statistics: June deadline applicants, placed June deadline applicants, all placed applicants, June deadline applicants per 10,000 population, placed June deadline applicants per 10,000 population, all placed applicants per 10,000 population

Application statistics: June deadline applications, offers, offer rate, average offer rate, percentage point difference between offer rate and average offer rate, contribution of group to the average offer rate

Non-disclosure controls: To avoid the disclosure of information about any individual the following measures are taken

- Applicants, placed applicants, applications and offers are rounded to the nearest 5.
- Applicants/placed applicants per 10,000 population figures are reported as 0 if the applicant/placed applicant figures are rounded to 0.
- All statistics related to the offer rate are not reported when the number of applications for a group is less than 10. The percentage point difference between the offer rate and the average offer rate is not reported when the number of applications for a group is less than 50.
- Offer rates are reported as 0% if there are fewer than 5 offers, and 100% if the number of offers is within 5 of the number of applications. When the offer rate is reported as 0% or 100%, it is reported in italics.

Contents:

18 year old applicants:	P.1
18 year old applications:	P.2
18 year old applicants by sex:	P.3
18 year old applications by sex:	P.4
18 year old applicants by POLAR3 quintile:	P.7
18 year old applications by POLAR3 quintile:	P.8
18 year old applicants by ethnic group:	P.11
18 year old applications by ethnic group:	P.12
Applicants (all ages):	P.15
Applications (all ages):	P.16
Applicants (all ages) by sex:	P.17
Applications (all ages) by sex:	P.18
Applicants (all ages) by POLAR3 quintile:	P.19
Applications (all ages) by POLAR3 quintile:	P.20
Applicants (all ages) by ethnic group:	P.21
Applications (all ages) by ethnic group:	P.22

P.1 18 year old applicants

Statistic	2011	2012	2013	2014	2015	2016
June deadline applicants	945	1,095	940	940	1,000	840
Placed June deadline applicants	215	245	265	295	285	250
All placed applicants	305	295	300	320	320	275
June deadline applicants per 10,000 population	12.3	14.1	12.4	12.5	13.0	11.2
Placed June deadline applicants per 10,000	2.8	3.1	3.5	3.9	3.7	3.3
All placed applicants per 10,000 population	3.9	3.8	3.9	4.3	4.2	3.6

P.2 18 year old applications

Statistic	2011	2012	2013	2014	2015	2016
June deadline applications	1,040	1,175	1,065	1,050	1,140	950
Offers	445	560	645	705	955	855
Offer rate	42.6%	47.6%	60.4%	67.1%	83.8%	90.3%

P.3 18 year old applicants by sex

Statistic	Sex	2011	2012	2013	2014	2015	2016
June deadline applicants	Men	170	215	165	155	195	160
	Women	775	880	780	785	805	680
Placed June deadline applicants	Men	45	45	60	40	50	40
	Women	170	195	210	255	235	210
All placed applicants	Men	60	65	65	45	60	45
	Women	245	235	230	280	260	230
June deadline applicants per 10,000 population	Men	4.3	5.4	4.2	4.0	5.0	4.1
	Women	20.6	23.3	21.0	21.5	21.5	18.7
Placed June deadline applicants per 10,000 population	Men	1.1	1.2	1.5	1.0	1.3	1.1
	Women	4.6	5.2	5.6	7.0	6.2	5.7
All placed applicants per 10,000 population	Men	1.5	1.6	1.7	1.1	1.5	1.1
	Women	6.5	6.2	6.3	7.6	7.0	6.3

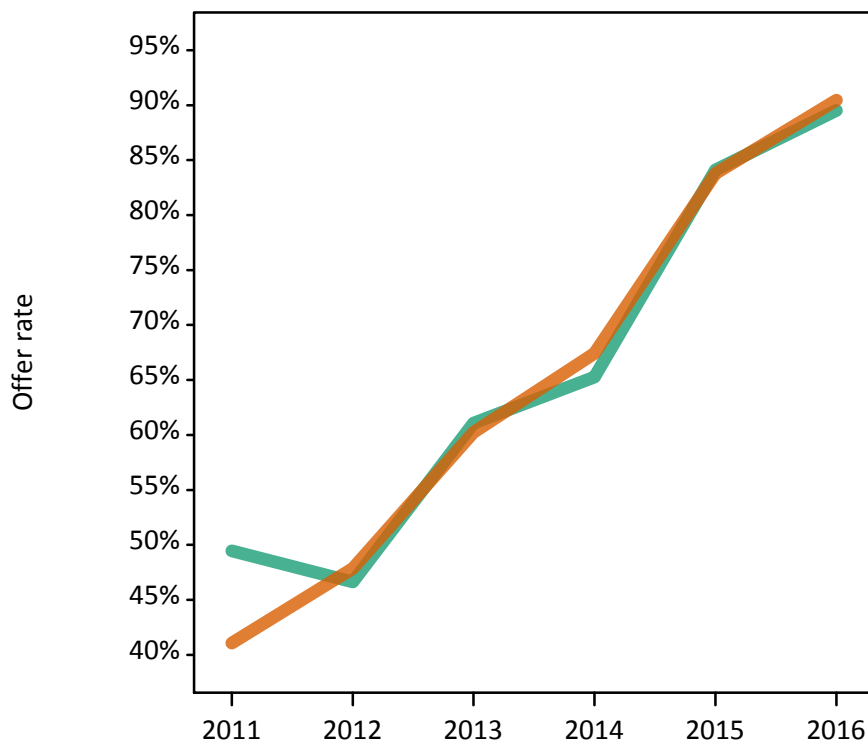
P.4 18 year old applications by sex

Statistic	Sex	2011	2012	2013	2014	2015	2016
June deadline applications	Men	190	225	185	165	215	170
	Women	850	955	880	880	925	775
Offers	Men	95	105	115	110	180	155
	Women	350	455	530	595	775	700
Offer rate	Men	49.5%	46.6%	61.1%	65.3%	84.1%	89.5%
	Women	41.1%	47.8%	60.2%	67.4%	83.8%	90.5%
Average offer rate	Men	41.2%	45.3%	61.5%	64.0%	82.8%	91.1%
	Women	42.9%	48.2%	60.1%	67.7%	84.1%	90.1%
Percentage point difference between offer rate and average offer rate	Men	8.3	1.4	-0.5	1.3	1.3	-1.5
	Women	-1.8	-0.3	0.1	-0.2	-0.3	0.3
Contribution of group to the average offer rate	Men	0.306	0.329	0.297	0.368	0.445	0.432
	Women	0.847	0.843	0.852	0.880	0.872	0.874

P.5 18 year old offer rate by sex

Note: The line for a group is not plotted when that group made fewer than 10 applications in any of the years from 2011-2016.

Men
Women



P.6 Percentage point difference between 18 year old offer rate and average offer rate by sex

Note: The line for a group is not plotted when that group made fewer than 50 applications in any of the years from 2011-2016.

Men
Women



P.7 18 year old applicants by POLAR3 quintile

Statistic	POLAR3 quintile	2011	2012	2013	2014	2015	2016
June deadline applicants	Quintile 1	185	220	170	170	205	175
	Quintile 2	210	240	210	190	215	210
	Quintile 3	215	220	230	235	225	200
	Quintile 4	190	215	195	210	230	155
	Quintile 5	150	195	135	135	125	105
Placed June deadline applicants	Quintile 1	45	60	40	50	55	55
	Quintile 2	50	55	75	65	60	75
	Quintile 3	45	50	70	80	75	60
	Quintile 4	50	45	45	65	75	45
	Quintile 5	25	35	35	30	20	15
All placed applicants	Quintile 1	65	70	45	60	60	60
	Quintile 2	65	65	85	75	65	80
	Quintile 3	65	60	80	90	85	65
	Quintile 4	65	55	50	70	80	50
	Quintile 5	45	45	40	35	25	15
June deadline applicants per 10,000 population	Quintile 1	12.7	15.6	12.1	12.2	14.7	12.8
	Quintile 2	13.8	16.0	14.3	13.0	14.3	14.4
	Quintile 3	14.0	14.3	15.0	15.6	14.6	13.2
	Quintile 4	12.1	13.5	12.5	13.8	14.8	10.0
	Quintile 5	9.1	11.6	8.2	8.2	7.4	6.3
Placed June deadline applicants per 10,000 population	Quintile 1	3.3	4.1	3.0	3.7	3.8	3.9
	Quintile 2	3.4	3.8	5.0	4.6	4.0	5.1
	Quintile 3	2.9	3.2	4.5	5.4	4.9	3.9
	Quintile 4	3.1	2.7	2.9	4.2	4.7	3.0
	Quintile 5	1.4	2.1	2.2	1.9	1.3	1.0
All placed applicants per 10,000 population	Quintile 1	4.4	4.8	3.2	4.2	4.4	4.3
	Quintile 2	4.5	4.4	5.7	5.0	4.4	5.4
	Quintile 3	4.2	3.9	5.1	5.9	5.7	4.4
	Quintile 4	4.0	3.6	3.3	4.5	5.2	3.3
	Quintile 5	2.8	2.7	2.4	2.0	1.5	1.0

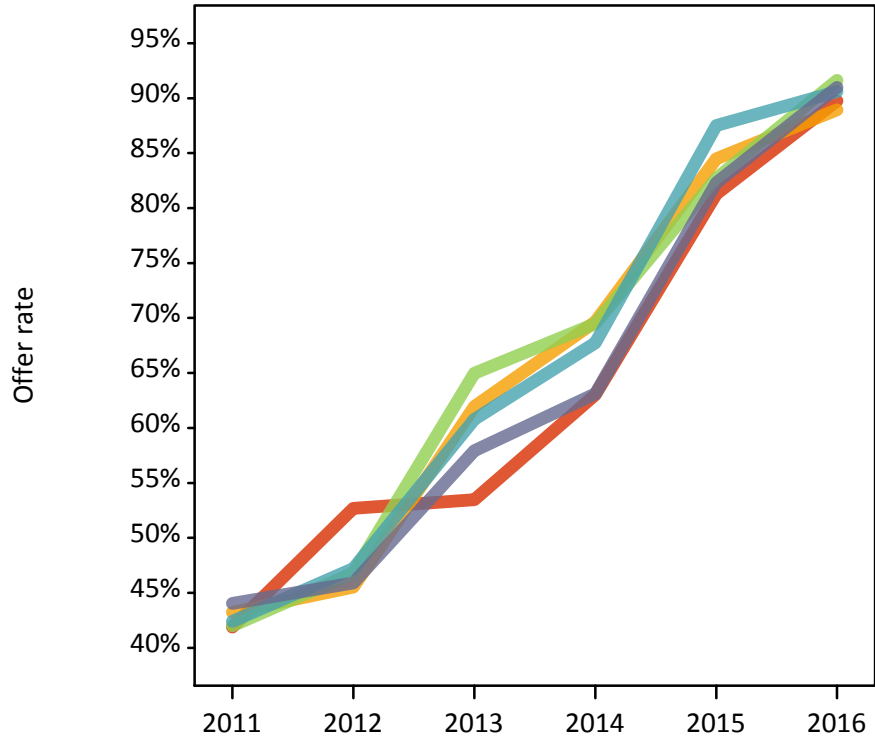
P.8 18 year old applications by POLAR3 quintile

Statistic	POLAR3 quintile	2011	2012	2013	2014	2015	2016
June deadline applications	Quintile 1	205	245	185	190	235	205
	Quintile 2	230	255	245	210	245	245
	Quintile 3	230	235	255	260	270	215
	Quintile 4	215	235	225	245	255	170
	Quintile 5	160	205	145	140	130	110
Offers	Quintile 1	85	130	100	120	190	185
	Quintile 2	100	115	155	145	205	215
	Quintile 3	95	110	165	180	225	195
	Quintile 4	90	110	140	165	225	155
	Quintile 5	70	95	85	90	105	100
Offer rate	Quintile 1	41.9%	52.7%	53.5%	63.0%	81.3%	89.8%
	Quintile 2	43.2%	45.5%	61.9%	69.7%	84.5%	88.9%
	Quintile 3	42.0%	46.8%	65.0%	69.5%	82.7%	91.6%
	Quintile 4	42.4%	47.2%	60.8%	67.8%	87.5%	90.6%
	Quintile 5	44.0%	45.9%	57.9%	63.1%	82.3%	91.0%
Average offer rate	Quintile 1	39.9%	49.0%	59.8%	67.1%	84.5%	90.8%
	Quintile 2	43.4%	48.1%	61.1%	66.6%	82.9%	91.2%
	Quintile 3	43.4%	46.1%	61.8%	66.0%	83.5%	89.3%
	Quintile 4	44.7%	47.2%	58.5%	68.7%	84.9%	89.8%
	Quintile 5	41.0%	47.8%	60.5%	66.9%	82.8%	89.8%
Percentage point difference between offer rate and average offer rate	Quintile 1	1.9	3.7	-6.3	-4.1	-3.3	-1.1
	Quintile 2	-0.2	-2.6	0.9	3.1	1.6	-2.2
	Quintile 3	-1.5	0.7	3.2	3.5	-0.8	2.3
	Quintile 4	-2.3	-0.0	2.3	-1.0	2.6	0.8
	Quintile 5	3.0	-1.9	-2.6	-3.8	-0.5	1.2
Contribution of group to the average offer rate	Quintile 1	0.276	0.319	0.276	0.290	0.355	0.373
	Quintile 2	0.297	0.295	0.324	0.314	0.364	0.391
	Quintile 3	0.294	0.280	0.339	0.349	0.381	0.383
	Quintile 4	0.284	0.301	0.323	0.331	0.380	0.381
	Quintile 5	0.228	0.277	0.234	0.241	0.271	0.317

P.9 18 year old offer rate by POLAR3 quintile

Note: The line for a group is not plotted when that group made fewer than 10 applications in any of the years from 2011-2016.

- Quintile 1
- Quintile 2
- Quintile 3
- Quintile 4
- Quintile 5



P.10 Percentage point difference between 18 year old offer rate and average offer rate by POLAR3 quintile

Note: The line for a group is not plotted when that group made fewer than 50 applications in any of the years from 2011-2016.

- Quintile 1
- Quintile 2
- Quintile 3
- Quintile 4
- Quintile 5



P.11 18 year old applicants by ethnic group

Statistic	Ethnic group	2011	2012	2013	2014	2015	2016
June deadline applicants	Asian	10	10	10	10	15	10
	Black	5	5	0	10	15	10
	Mixed	10	20	5	20	20	15
	White	920	1,055	920	900	945	800
	Other	0	0	0	0	0	0
Placed June deadline applicants	Asian	0	0	0	5	0	0
	Black	0	0	0	0	0	5
	Mixed	0	5	0	5	5	0
	White	215	235	265	290	275	245
	Other	0	0	0	0	0	0
All placed applicants	Asian	5	0	0	5	0	0
	Black	0	0	0	0	5	5
	Mixed	5	10	0	5	5	5
	White	295	285	295	315	310	265
	Other	0	0	0	0	0	0
June deadline applicants per 10,000 population	Asian	1.7	1.9	1.5	1.8	2.1	1.5
	Black	1.1	1.1	0.0	2.6	5.0	3.8
	Mixed	4.1	7.7	2.6	6.6	6.8	4.8
	White	14.2	16.3	14.6	14.6	15.2	13.2
	Other	0.0	0.0	0.0	0.0	0.0	0.0
Placed June deadline applicants per 10,000 population	Asian	0.0	0.0	0.0	0.4	0.0	0.0
	Black	0.0	0.0	0.0	0.0	0.0	1.0
	Mixed	0.0	2.7	0.0	1.0	1.9	0.0
	White	3.3	3.6	4.2	4.7	4.4	4.1
	Other	0.0	0.0	0.0	0.0	0.0	0.0
All placed applicants per 10,000 population	Asian	0.5	0.0	0.0	0.4	0.0	0.0
	Black	0.0	0.0	0.0	0.0	1.3	1.0
	Mixed	1.7	3.8	0.0	1.0	1.9	1.0
	White	4.6	4.4	4.7	5.1	5.0	4.4
	Other	0.0	0.0	0.0	0.0	0.0	0.0

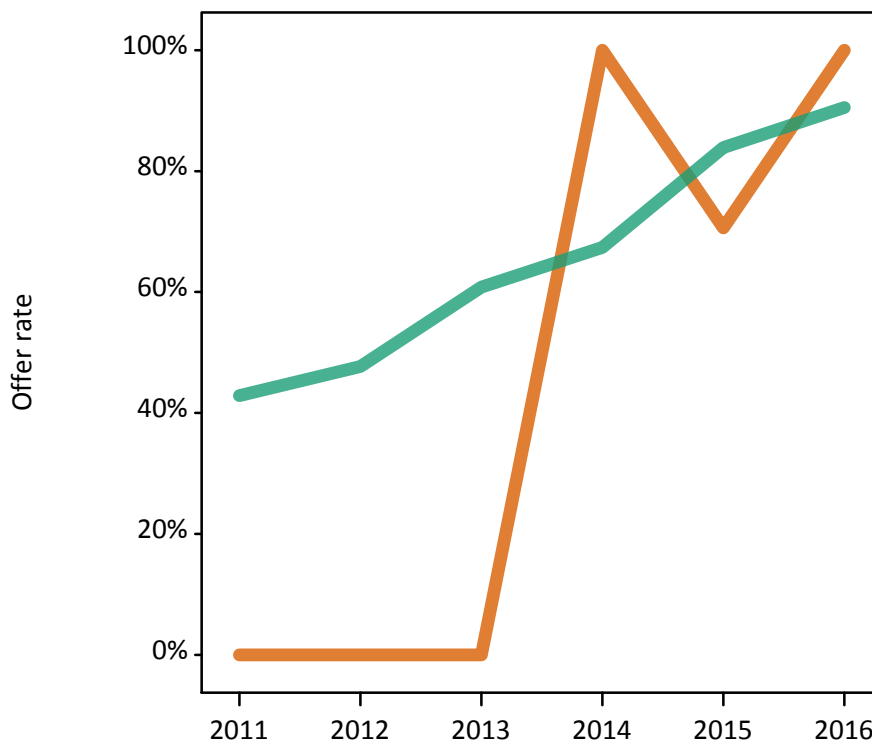
P.12 18 year old applications by ethnic group

Statistic	Ethnic group	2011	2012	2013	2014	2015	2016
June deadline applications	Asian	10	10	10	10	15	10
	Black	5	5	0	10	15	10
	Mixed	10	20	5	20	25	15
	White	1,010	1,135	1,040	1,005	1,080	905
	Other	0	0	0	0	0	0
Offers	Asian	0	5	5	10	10	10
	Black	0	0	0	5	15	10
	Mixed	5	10	5	10	20	15
	White	435	540	635	680	905	820
	Other	0	0	0	0	0	0
Offer rate	Asian	0.0%	0.0%	0.0%	100.0%	70.6%	100.0%
	Black	N/A	N/A	N/A	N/A	100.0%	100.0%
	Mixed	45.5%	47.6%	N/A	57.9%	100.0%	100.0%
	White	42.9%	47.7%	60.8%	67.4%	83.9%	90.5%
	Other	N/A	N/A	N/A	N/A	N/A	N/A
Average offer rate	Asian	31.6%	51.9%	46.5%	66.9%	77.6%	87.5%
	Black	N/A	N/A	N/A	N/A	91.1%	91.5%
	Mixed	38.6%	42.2%	N/A	67.5%	91.1%	96.5%
	White	42.7%	47.6%	60.6%	67.2%	83.6%	90.2%
	Other	N/A	N/A	N/A	N/A	N/A	N/A
Percentage point difference between offer rate and average offer rate	Asian	N/A	N/A	N/A	N/A	N/A	N/A
	Black	N/A	N/A	N/A	N/A	N/A	N/A
	Mixed	N/A	N/A	N/A	N/A	N/A	N/A
	White	0.2	0.1	0.2	0.2	0.2	0.3
	Other	N/A	N/A	N/A	N/A	N/A	N/A
Contribution of group to the average offer rate	Asian	0.047	0.052	0.137	0.138	0.123	0.187
	Black	N/A	N/A	N/A	N/A	0.284	0.234
	Mixed	0.132	0.125	N/A	0.236	0.179	0.321
	White	0.975	0.969	0.981	0.967	0.957	0.965
	Other	N/A	N/A	N/A	N/A	N/A	N/A

P.13 18 year old offer rate by ethnic group

Note: The line for a group is not plotted when that group made fewer than 10 applications in any of the years from 2011-2016.

- Asian
- Black
- Mixed
- White
- Other



P.14 Percentage point difference between 18 year old offer rate and average offer rate by ethnic group

Note: The line for a group is not plotted when that group made fewer than 50 applications in any of the years from 2011-2016.

- Asian
- Black
- Mixed
- White
- Other



P.15 Applicants (all ages)

Statistic	2011	2012	2013	2014	2015	2016
June deadline applicants	1,580	1,825	1,605	1,660	1,760	1,520
Placed June deadline applicants	425	495	540	645	670	585
All placed applicants	580	610	640	725	825	690

P.16 Applications (all ages)

Statistic	2011	2012	2013	2014	2015	2016
June deadline applications	1,770	2,080	1,885	1,945	2,055	1,800
Offers	740	1,035	1,090	1,255	1,660	1,500
Offer rate	41.7%	49.6%	57.9%	64.6%	80.9%	83.5%

P.17 Applicants (all ages) by sex

Statistic	Sex	2011	2012	2013	2014	2015	2016
June deadline applicants	Men	320	380	305	310	330	300
	Women	1,260	1,445	1,300	1,350	1,430	1,220
Placed June deadline applicants	Men	95	95	110	110	105	110
	Women	330	395	425	530	570	475
All placed applicants	Men	135	135	135	130	125	125
	Women	445	480	505	595	695	565

P.18 Applications (all ages) by sex

Statistic	Sex	2011	2012	2013	2014	2015	2016
June deadline applications	Men	370	430	365	365	375	340
	Women	1,400	1,650	1,520	1,580	1,680	1,460
Offers	Men	175	195	200	225	305	280
	Women	565	835	895	1,030	1,355	1,220
Offer rate	Men	47.2%	45.7%	54.5%	61.7%	82.1%	82.7%
	Women	40.3%	50.6%	58.7%	65.3%	80.6%	83.7%

P.19 Applicants (all ages) by POLAR3 quintile

Statistic	POLAR3 quintile	2011	2012	2013	2014	2015	2016
June deadline applicants	Quintile 1	330	365	290	325	380	335
	Quintile 2	335	410	360	345	360	385
	Quintile 3	370	400	375	410	405	350
	Quintile 4	325	365	360	365	385	265
	Quintile 5	225	285	225	220	220	175
Placed June deadline applicants	Quintile 1	90	110	95	120	140	130
	Quintile 2	100	115	135	140	140	155
	Quintile 3	100	115	135	170	175	130
	Quintile 4	95	95	110	145	145	115
	Quintile 5	40	55	65	65	65	50
All placed applicants	Quintile 1	120	130	110	140	175	150
	Quintile 2	125	140	160	155	180	165
	Quintile 3	140	145	150	195	205	170
	Quintile 4	120	125	140	165	180	140
	Quintile 5	80	75	80	75	80	60

P.20 Applications (all ages) by POLAR3 quintile

Statistic	POLAR3 quintile	2011	2012	2013	2014	2015	2016
June deadline applications	Quintile 1	375	415	340	375	450	400
	Quintile 2	380	470	425	405	420	470
	Quintile 3	405	455	445	485	500	410
	Quintile 4	370	415	420	440	445	310
	Quintile 5	240	325	250	240	230	200
Offers	Quintile 1	150	225	185	230	355	330
	Quintile 2	165	220	250	280	335	380
	Quintile 3	165	235	285	310	415	350
	Quintile 4	160	210	235	295	365	265
	Quintile 5	100	145	140	145	185	170
Offer rate	Quintile 1	39.4%	54.0%	54.7%	61.1%	79.5%	82.8%
	Quintile 2	43.7%	47.3%	58.4%	68.3%	79.8%	80.5%
	Quintile 3	40.9%	51.2%	63.7%	63.8%	82.6%	85.9%
	Quintile 4	42.6%	50.5%	55.2%	67.3%	81.9%	84.6%
	Quintile 5	42.4%	44.6%	55.6%	60.7%	79.2%	85.4%

P.21 Applicants (all ages) by ethnic group

Statistic	Ethnic group	2011	2012	2013	2014	2015	2016
June deadline applicants	Asian	15	35	25	25	30	20
	Black	10	5	10	15	30	20
	Mixed	15	30	20	25	30	30
	White	1,535	1,740	1,540	1,590	1,665	1,435
	Other	0	5	0	5	5	5
Placed June deadline applicants	Asian	0	0	5	10	5	0
	Black	0	0	0	5	5	5
	Mixed	0	10	5	5	10	10
	White	420	475	525	625	645	570
	Other	0	0	0	5	0	0
All placed applicants	Asian	5	5	5	10	10	5
	Black	5	0	0	5	5	5
	Mixed	5	15	5	5	15	10
	White	565	585	625	700	790	665
	Other	0	0	0	5	0	0

P.22 Applications (all ages) by ethnic group

Statistic	Ethnic group	2011	2012	2013	2014	2015	2016
June deadline applications	Asian	15	40	30	30	40	25
	Black	10	5	10	15	30	25
	Mixed	20	35	20	25	40	35
	White	1,720	1,985	1,820	1,865	1,940	1,710
	Other	5	5	0	5	5	5
Offers	Asian	0	10	10	15	25	15
	Black	0	0	5	5	20	20
	Mixed	5	15	10	15	40	30
	White	725	995	1,065	1,210	1,570	1,430
	Other	0	0	0	5	5	5
Offer rate	Asian	0.0%	28.6%	36.7%	50.0%	68.4%	73.9%
	Black	N/A	N/A	0.0%	37.5%	78.6%	75.0%
	Mixed	33.3%	48.5%	45.0%	59.3%	100.0%	100.0%
	White	42.3%	50.2%	58.6%	65.0%	80.9%	83.6%
	Other	N/A	N/A	N/A	N/A	N/A	N/A

Technical Notes and Definitions

UCAS undergraduate scheme

Adjustment

Adjustment allows applicants who have met and exceeded the terms of their conditional firm offer to seek and find a place at another provider whilst keeping their place at their original firm choice provider.

Clearing

Clearing is a route for applicants that are not placed and holding no offers to find a place on courses with vacancies.

Cycle year

The UCAS application cycle which runs from September to October the following year. For example the 2016 cycle runs from September 2015 through to October 2016.

End of cycle

The point in the cycle to which the numbers in this report refer, and the point at which the cycle is closed such that no more applications or offers can be made, and no more applicants can be placed. Numbers reported at the end of cycle exclude information on a small number of applicants who cancelled during the cycle.

Extra

Applicants who are unsuccessful in obtaining an offer or decline all offers may be eligible to apply through Extra, where they can apply to one further course at a time. Extra operates from 25 February until early July. It provides applicants who are eligible the possibility of obtaining an offer before exam results are published and Clearing starts.

June 30 deadline

The deadline for main scheme applications. Applicants who apply after this date will go directly into Clearing.

Record of Prior Acceptance (RPA)

RPA is an acceptance route used when a provider informs UCAS of applicants it has accepted outside of the normal application process (e.g. individuals who have applied directly to the provider).

Reporting groups

Ethnic group

High level grouping of ethnic origin as declared by the applicant: 'White', 'Black', 'Asian', 'Mixed', 'Other', 'Unknown'. Applicants who declare themselves as 'Unknown' ethnic origin are not reported in these tables, but are included in the associated csv data file.

POLAR3 quintile

Developed by HEFCE, POLAR3 classifies small areas across the UK into five groups according to their level of young participation in Higher Education. Each of these groups represents around 20 per cent of young people and is ranked from Quintile 1 (areas with the lowest young participation rates, considered as the most disadvantaged) to Quintile 5 (highest young participation rates, considered most advantaged). POLAR3 is based on the participation rates of young people between 2005 and 2009 who entered Higher Education between 2005-06 and 2010-11, therefore is most suitable for applicants aged 19 and under. These groups are assigned using the postcode declared by the applicant at the time of their application. If a UK postcode is invalid, considered unsafe for measurement or there is no link to Census geography possible then the applicant is not assigned to a quintile. Applicants with no POLAR3 quintile are not reported.

Sex

Sex as declared by the applicant.

SIMD quintile

Scottish index of multiple deprivation (SIMD) for 2012 identifies small area concentrations of multiple deprivation across all of Scotland, providing a relative measure of deprivation amongst 6505 small areas (data zones) based on 7 socio-economic domains. These small areas are classified into five groups ranked from Quintile 1 (considered the most deprived) to Quintile 5 (considered least deprived), with equal populations in each quintile. Quintiles are assigned using the postcode declared by the applicant, applicants declaring invalid postcodes are classified as 'Not assigned' and are not reported.

SIMD is only defined for applicants domiciled in Scotland, therefore any applicants domiciled outside of Scotland cannot be assigned to an SIMD quintile and so are not reported for this measure.

SIMD is only reported for providers in Scotland. Application and entry rates by SIMD are reported in the 2016 End of Cycle Report and the 2016 cycle January deadline application rate report.

Statistics reported in the tables

All placed applicants

The number of applicants placed for entry into higher education at the provider through one of their choices, including any choices made through Extra, or via Adjustment, Clearing or RPA.

All placed applicants per 10,000 population

The number of total UK domiciled 18 year old placed applicants for entry into higher education at the provider divided by the number of UK 18 year olds in the population, multiplied by 10,000. This gives the number of 18 year olds, for every 10,000 in the population, that were placed at the provider through one of their choices, including any choices made through Extra, or via Adjustment, Clearing or RPA. It is an alternative way of expressing the entry rate to a provider. By referencing the underlying population this statistic shows how the number of placed applicants is changing in relation to the available pool of potential applicants and so gives the chance that somebody from the group will be placed at a provider.

This statistic is only reported for 18 year olds.

Average offer rate

The offer rate that you might expect if the predicted grades and subject choice of applicants were the only factors that influenced whether an applicant was made an offer by the provider. The average offer rate is calculated by dividing applicants according to their specific combination of grades (for A levels the best three predicted grades are used, for BTECs, International Baccalaureate and Scottish Highers and Advanced Highers, predicted grades along with any grades already achieved upon applying are used) and subject choice. For each combination the number of main scheme offers is divided by the number of main scheme applications, to give an overall offer rate. This is then multiplied by the number of applications made by the group for which the average offer rate is being calculated (for example POLAR3 quintile 1), to give an average number of offers for that group. These average number of offers are then added together across all combinations of predicted grade and subject and divided by the number of main scheme applications from the group to give the average offer rate.

The average offer rate does not attempt to control for any other factors that may play a part in the decision to make an offer, such as the subject of the qualifications studied, their relevance to a course, or the grade in each subject; higher numbers of A levels being studied; the exact profile of grades predicted; personal statements; teacher references; interviews; or any other criteria (such as work experience or portfolios) that may be part of the admissions decision.

This statistic is only reported for 18 year olds.

Contribution of group to the average offer rate

The way in which the average offer rate is defined means that the pattern of application and offers of a group (for example POLAR3 quintile 1) will always contribute, in part, to the average offer rate for that group. When this contribution is large, the average offer rate will mainly reflect the patterns for the group, meaning that the value of the average offer rate will be similar to the offer rate, the percentage point difference statistic will be small, and any real difference between the offer rate and what might be expected given the predicted grades and subject choices of the applicants will be difficult to detect.

Values of the contribution of group to the average offer rate range between 0 and 1. The closer the value is to 1 the greater the contribution a group makes to its own average offer rate.

This statistic is only reported for 18 year olds.

Placed June deadline applicants

An applicant who has been placed for entry into higher education at the provider through a June deadline application.

Placed June deadline applicants per 10,000 population

The number of UK domiciled 18 year old placed June deadline applicants at the provider divided by the number of UK 18 year olds in the population, multiplied by 10,000. This gives the number of 18 year olds, for every 10,000 in the population, that were placed at the provider through one of their June deadline applications. It is an alternative way of expressing the entry rate to a provider, but for placed June deadline applicants only. By referencing the underlying population this statistic shows how the number of placed June deadline applicants is changing in relation to the available pool of potential 18 year old applicants and so gives the chance that somebody from the group will be placed at a provider through a June deadline application.

This statistic is only reported for 18 year olds.

June deadline applications

An application (or choice) to a course in higher education to the provider that is made by the June 30 deadline. Each applicant can make up to five choices this way. The number of June deadline applications does not include choices made through the following routes: Clearing, Extra, Adjustment and RPAs. Applications made to October deadline courses received after the October deadline are not included in these statistics.

June deadline applicants

The number of applicants that made at least one application to the provider by the June 30 deadline.

June deadline applicants per 10,000 population

The number of UK domiciled 18 year old June deadline applicants to the provider divided by the number of UK 18 year olds in the population, multiplied by 10,000. This gives the number of 18 year olds, for every 10,000 in the population, who applied by the June 30 deadline. It is equivalent to the application rate. By referencing the underlying population this statistic shows how the number of June deadline applicants is changing in relation to the available pool of potential 18 year old applicants and so gives the chance that somebody from the group will apply to a provider by the June 30 deadline.

This statistic is only reported for 18 year olds.

Offers

An offer is defined as a provider's decision in response to an application to offer a place to an applicant, often subject to the applicant satisfying academic and/or other criteria, via a June deadline application (i.e. does not cover choices made through the following routes: Clearing, Extra, Adjustment and RPAs).

Offer rate

The number of offers made divided by the number of June deadline applications. This gives the proportion of all June deadline applications to the provider that received an offer.

Percentage point difference between offer rate and average offer rate

The offer rate minus the average offer rate.

The percentage point difference can be compared to the expected range of statistical variation resulting from the calculation of the average offer rate using the Average Offer Rate Lookup Table. Where the value of the percentage point difference lies outside of this range, the percentage point difference may be considered to represent a real difference between the offer rate and the average offer rate.

Other definitions

Age

This analysis uses country-specific age definitions that align with the cut off points for school and college cohorts within the different administrations of the UK. For England and Wales, ages are defined on the 31 August, for Northern Ireland on the 1 July and for Scotland on the 28 February the following year. Defining ages in this way matches the assignment of children to school cohorts. For applicants outside of the UK a cohort cut off of 31 August has been used.

Provider

A higher education provider - a university or college.

UK domiciled

Declared area of permanent residence within England, Northern Ireland, Scotland and Wales. Applicants from the Channel Islands and Isle of Man are not included.