

## B56 The University of Bradford

**Cycle years:** 2011 - 2016

**Cycle Reference Point:** End of Cycle

**Applicant coverage:** UK domiciled

**Reporting groups:** Sex, POLAR3, ethnic group

**Applicant statistics:** June deadline applicants, placed June deadline applicants, all placed applicants, June deadline applicants per 10,000 population, placed June deadline applicants per 10,000 population, all placed applicants per 10,000 population

**Application statistics:** June deadline applications, offers, offer rate, average offer rate, percentage point difference between offer rate and average offer rate, contribution of group to the average offer rate

**Non-disclosure controls:** To avoid the disclosure of information about any individual the following measures are taken

- Applicants, placed applicants, applications and offers are rounded to the nearest 5.
- Applicants/placed applicants per 10,000 population figures are reported as 0 if the applicant/placed applicant figures are rounded to 0.
- All statistics related to the offer rate are not reported when the number of applications for a group is less than 10. The percentage point difference between the offer rate and the average offer rate is not reported when the number of applications for a group is less than 50.
- Offer rates are reported as 0% if there are fewer than 5 offers, and 100% if the number of offers is within 5 of the number of applications. When the offer rate is reported as 0% or 100%, it is reported in italics.

### Contents:

18 year old applicants:	P.1
18 year old applications:	P.2
18 year old applicants by sex:	P.3
18 year old applications by sex:	P.4
18 year old applicants by POLAR3 quintile:	P.7
18 year old applications by POLAR3 quintile:	P.8
18 year old applicants by ethnic group:	P.11
18 year old applications by ethnic group:	P.12
Applicants (all ages):	P.15
Applications (all ages):	P.16
Applicants (all ages) by sex:	P.17
Applications (all ages) by sex:	P.18
Applicants (all ages) by POLAR3 quintile:	P.19
Applications (all ages) by POLAR3 quintile:	P.20
Applicants (all ages) by ethnic group:	P.21
Applications (all ages) by ethnic group:	P.22

## P.1 18 year old applicants

Statistic	2011	2012	2013	2014	2015	2016
June deadline applicants	4,665	5,070	4,275	4,630	4,460	4,355
Placed June deadline applicants	880	710	810	755	745	770
All placed applicants	1,290	1,040	1,065	965	1,005	1,015
June deadline applicants per 10,000 population	60.6	65.6	56.2	61.4	58.2	58.1
Placed June deadline applicants per 10,000	11.4	9.2	10.6	10.0	9.8	10.3
All placed applicants per 10,000 population	16.8	13.4	14.0	12.8	13.1	13.5

## P.2 18 year old applications

Statistic	2011	2012	2013	2014	2015	2016
June deadline applications	5,575	5,895	5,050	5,375	5,090	4,910
Offers	4,115	3,720	4,235	4,590	4,105	4,260
Offer rate	73.8%	63.1%	83.8%	85.3%	80.6%	86.7%

### P.3 18 year old applicants by sex

Statistic	Sex	2011	2012	2013	2014	2015	2016
June deadline applicants	Men	2,255	2,295	2,045	2,055	1,945	2,060
	Women	2,415	2,775	2,230	2,575	2,520	2,300
Placed June deadline applicants	Men	395	330	380	340	315	370
	Women	485	380	430	415	430	400
All placed applicants	Men	605	470	505	430	445	480
	Women	690	570	560	535	560	535
June deadline applicants per 10,000 population	Men	57.3	57.8	52.3	53.1	49.5	53.6
	Women	64.1	73.7	60.2	70.3	67.4	62.9
Placed June deadline applicants per 10,000 population	Men	10.0	8.4	9.7	8.7	8.1	9.6
	Women	12.9	10.1	11.6	11.3	11.5	10.9
All placed applicants per 10,000 population	Men	15.3	11.8	13.0	11.1	11.3	12.4
	Women	18.3	15.2	15.1	14.6	15.0	14.6

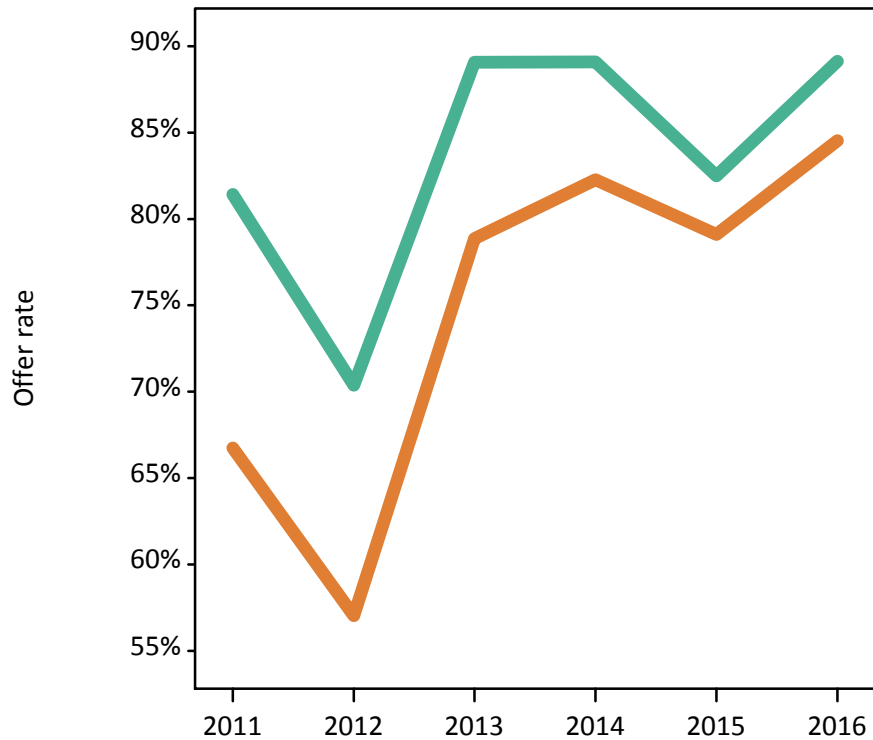
### P.4 18 year old applications by sex

Statistic	Sex	2011	2012	2013	2014	2015	2016
June deadline applications	Men	2,670	2,690	2,445	2,430	2,235	2,345
	Women	2,910	3,200	2,605	2,950	2,860	2,570
Offers	Men	2,175	1,895	2,180	2,165	1,840	2,090
	Women	1,940	1,825	2,055	2,425	2,260	2,170
Offer rate	Men	81.4%	70.4%	89.1%	89.1%	82.5%	89.1%
	Women	66.7%	57.0%	78.9%	82.3%	79.1%	84.5%
Average offer rate	Men	82.3%	71.3%	89.9%	90.5%	83.2%	90.1%
	Women	65.9%	56.2%	78.1%	81.1%	78.6%	83.7%
Percentage point difference between offer rate and average offer rate	Men	-0.9	-1.0	-0.8	-1.4	-0.7	-1.0
	Women	0.8	0.8	0.7	1.1	0.5	0.9
Contribution of group to the average offer rate	Men	0.665	0.655	0.687	0.655	0.654	0.651
	Women	0.692	0.710	0.706	0.716	0.730	0.682

### P.5 18 year old offer rate by sex

Note: The line for a group is not plotted when that group made fewer than 10 applications in any of the years from 2011-2016.

Men  
Women



### P.6 Percentage point difference between 18 year old offer rate and average offer rate by sex

Note: The line for a group is not plotted when that group made fewer than 50 applications in any of the years from 2011-2016.

Men  
Women



## P.7 18 year old applicants by POLAR3 quintile

Statistic	POLAR3 quintile	2011	2012	2013	2014	2015	2016
June deadline applicants	Quintile 1	655	780	615	750	665	700
	Quintile 2	1,065	1,260	1,060	1,145	1,170	1,190
	Quintile 3	1,335	1,400	1,205	1,305	1,315	1,240
	Quintile 4	860	870	765	780	735	695
	Quintile 5	745	755	620	640	565	520
Placed June deadline applicants	Quintile 1	115	100	115	95	90	115
	Quintile 2	215	205	210	210	210	230
	Quintile 3	285	250	285	270	285	300
	Quintile 4	155	85	120	100	95	85
	Quintile 5	110	70	80	80	60	45
All placed applicants	Quintile 1	150	140	145	130	130	140
	Quintile 2	295	275	275	255	270	295
	Quintile 3	415	365	375	330	390	380
	Quintile 4	235	130	155	130	125	115
	Quintile 5	190	125	120	120	90	75
June deadline applicants per 10,000 population	Quintile 1	45.6	54.7	44.3	53.9	47.4	52.0
	Quintile 2	70.9	83.9	71.9	78.3	78.8	82.4
	Quintile 3	86.7	90.7	79.1	86.7	85.8	82.6
	Quintile 4	54.8	54.8	49.0	50.6	47.0	44.9
	Quintile 5	44.9	44.9	37.5	39.2	33.9	31.5
Placed June deadline applicants per 10,000 population	Quintile 1	8.1	7.0	8.3	6.8	6.5	8.4
	Quintile 2	14.2	13.6	14.3	14.3	14.2	15.8
	Quintile 3	18.4	16.3	18.6	17.8	18.7	19.9
	Quintile 4	10.0	5.5	7.7	6.6	6.1	5.4
	Quintile 5	6.5	4.1	4.8	4.8	3.6	2.7
All placed applicants per 10,000 population	Quintile 1	10.4	10.0	10.3	9.3	9.2	10.5
	Quintile 2	19.7	18.4	18.5	17.6	18.0	20.5
	Quintile 3	27.0	23.8	24.5	21.9	25.5	25.4
	Quintile 4	15.1	8.1	9.9	8.5	8.0	7.5
	Quintile 5	11.5	7.4	7.2	7.2	5.4	4.5

## P.8 18 year old applications by POLAR3 quintile

Statistic	POLAR3 quintile	2011	2012	2013	2014	2015	2016
June deadline applications	Quintile 1	750	855	680	835	715	760
	Quintile 2	1,320	1,500	1,320	1,400	1,355	1,355
	Quintile 3	1,770	1,795	1,560	1,620	1,640	1,520
	Quintile 4	950	955	835	835	785	735
	Quintile 5	775	775	650	685	590	535
Offers	Quintile 1	545	525	545	685	565	655
	Quintile 2	970	920	1,115	1,220	1,090	1,155
	Quintile 3	1,305	1,145	1,315	1,370	1,330	1,320
	Quintile 4	715	610	690	715	635	645
	Quintile 5	570	515	565	585	475	475
Offer rate	Quintile 1	72.6%	61.5%	80.4%	82.3%	78.9%	86.4%
	Quintile 2	73.5%	61.5%	84.3%	87.3%	80.5%	85.4%
	Quintile 3	73.7%	63.7%	84.5%	84.7%	81.1%	86.9%
	Quintile 4	75.4%	63.8%	82.3%	86.0%	81.1%	87.5%
	Quintile 5	73.5%	66.0%	86.6%	85.7%	80.8%	89.2%
Average offer rate	Quintile 1	73.0%	63.0%	80.2%	83.8%	79.3%	85.8%
	Quintile 2	72.9%	61.4%	83.9%	86.2%	79.9%	85.6%
	Quintile 3	74.0%	63.1%	84.5%	85.1%	81.6%	86.9%
	Quintile 4	75.4%	65.0%	82.9%	84.8%	81.3%	87.1%
	Quintile 5	73.3%	64.5%	87.0%	86.5%	80.2%	89.9%
Percentage point difference between offer rate and average offer rate	Quintile 1	-0.4	-1.5	0.2	-1.6	-0.4	0.6
	Quintile 2	0.5	0.1	0.4	1.1	0.6	-0.3
	Quintile 3	-0.3	0.5	0.0	-0.4	-0.5	0.0
	Quintile 4	-0.1	-1.2	-0.6	1.2	-0.2	0.4
	Quintile 5	0.1	1.5	-0.4	-0.8	0.6	-0.7
Contribution of group to the average offer rate	Quintile 1	0.250	0.246	0.269	0.257	0.237	0.247
	Quintile 2	0.331	0.333	0.359	0.347	0.349	0.352
	Quintile 3	0.416	0.402	0.406	0.391	0.415	0.391
	Quintile 4	0.289	0.279	0.290	0.265	0.271	0.250
	Quintile 5	0.302	0.268	0.292	0.269	0.277	0.245

### P.9 18 year old offer rate by POLAR3 quintile

Note: The line for a group is not plotted when that group made fewer than 10 applications in any of the years from 2011-2016.

- Quintile 1
- Quintile 2
- Quintile 3
- Quintile 4
- Quintile 5



### P.10 Percentage point difference between 18 year old offer rate and average offer rate by POLAR3 quintile

Note: The line for a group is not plotted when that group made fewer than 50 applications in any of the years from 2011-2016.

- Quintile 1
- Quintile 2
- Quintile 3
- Quintile 4
- Quintile 5



## P.11 18 year old applicants by ethnic group

Statistic	Ethnic group	2011	2012	2013	2014	2015	2016
June deadline applicants	Asian	2,040	2,205	2,010	2,160	2,095	2,205
	Black	305	365	290	295	320	335
	Mixed	130	155	110	115	130	150
	White	2,110	2,225	1,755	1,945	1,775	1,550
	Other	50	95	75	90	90	75
Placed June deadline applicants	Asian	515	420	510	470	470	555
	Black	40	30	40	35	40	35
	Mixed	20	20	15	15	20	15
	White	280	225	230	215	205	145
	Other	15	10	10	15	10	10
All placed applicants	Asian	710	635	665	610	655	720
	Black	90	60	60	55	55	55
	Mixed	25	35	20	20	25	20
	White	430	290	285	250	245	190
	Other	20	15	20	20	15	15
June deadline applicants per 10,000 population	Asian	323.9	340.3	304.8	318.7	296.3	306.4
	Black	111.6	128.9	97.3	97.3	100.5	107.1
	Mixed	54.1	59.9	41.1	39.6	42.8	47.4
	White	32.6	34.4	27.9	31.5	28.5	25.6
	Other	64.2	105.1	80.5	96.7	95.4	76.5
Placed June deadline applicants per 10,000 population	Asian	82.0	65.0	77.0	69.6	66.1	77.1
	Black	14.6	11.0	14.1	10.9	12.9	11.5
	Mixed	7.4	8.4	4.8	5.2	6.2	5.4
	White	4.3	3.5	3.6	3.5	3.3	2.4
	Other	18.5	12.4	11.0	16.1	8.3	11.1
All placed applicants per 10,000 population	Asian	112.7	97.9	101.0	90.1	92.8	100.2
	Black	33.3	21.0	20.5	17.8	17.3	17.3
	Mixed	10.7	12.7	7.0	7.6	8.1	7.0
	White	6.6	4.5	4.5	4.1	3.9	3.2
	Other	25.9	18.1	23.2	23.6	16.6	16.1



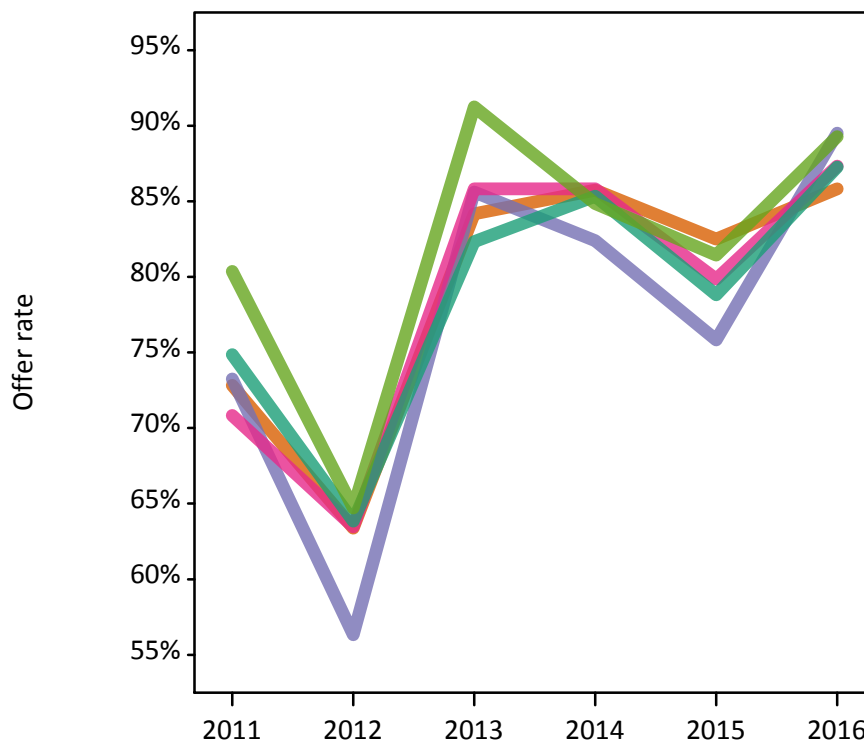
## P.12 18 year old applications by ethnic group

Statistic	Ethnic group	2011	2012	2013	2014	2015	2016
June deadline applications	Asian	2,780	2,865	2,650	2,740	2,605	2,670
	Black	315	370	305	300	325	345
	Mixed	145	165	120	120	150	160
	White	2,250	2,350	1,855	2,090	1,865	1,610
	Other	55	100	80	100	95	85
Offers	Asian	2,025	1,815	2,230	2,350	2,150	2,290
	Black	230	210	260	250	250	305
	Mixed	100	105	105	105	120	140
	White	1,685	1,500	1,530	1,780	1,470	1,405
	Other	45	65	75	85	80	75
Offer rate	Asian	72.8%	63.4%	84.2%	85.7%	82.5%	85.8%
	Black	73.2%	56.3%	85.6%	82.4%	75.8%	89.5%
	Mixed	70.8%	63.5%	85.8%	85.8%	79.9%	87.3%
	White	74.9%	63.8%	82.3%	85.3%	78.8%	87.3%
	Other	80.4%	64.7%	91.3%	84.8%	81.4%	89.3%
Average offer rate	Asian	73.9%	63.6%	85.1%	86.5%	82.7%	86.7%
	Black	73.1%	59.3%	86.6%	85.5%	79.9%	87.1%
	Mixed	73.4%	64.7%	82.1%	85.7%	82.5%	85.8%
	White	73.5%	62.9%	81.3%	83.7%	77.5%	86.6%
	Other	77.0%	66.4%	87.8%	86.6%	82.3%	87.2%
Percentage point difference between offer rate and average offer rate	Asian	-1.1	-0.2	-0.9	-0.8	-0.2	-0.8
	Black	0.2	-3.0	-1.0	-3.1	-4.1	2.4
	Mixed	-2.6	-1.2	3.7	0.1	-2.6	1.5
	White	1.3	1.0	1.0	1.7	1.4	0.6
	Other	3.3	-1.7	3.4	-1.8	-0.9	2.1
Contribution of group to the average offer rate	Asian	0.648	0.628	0.653	0.628	0.628	0.648
	Black	0.195	0.180	0.194	0.160	0.194	0.180
	Mixed	0.172	0.153	0.175	0.135	0.153	0.139
	White	0.596	0.572	0.545	0.549	0.527	0.490
	Other	0.128	0.150	0.156	0.141	0.150	0.141

### P.13 18 year old offer rate by ethnic group

Note: The line for a group is not plotted when that group made fewer than 10 applications in any of the years from 2011-2016.

- Asian
- Black
- Mixed
- White
- Other



### P.14 Percentage point difference between 18 year old offer rate and average offer rate by ethnic group

Note: The line for a group is not plotted when that group made fewer than 50 applications in any of the years from 2011-2016.

- Asian
- Black
- Mixed
- White
- Other



### P.15 Applicants (all ages)

Statistic	2011	2012	2013	2014	2015	2016
June deadline applicants	11,060	11,390	10,170	10,740	10,375	9,920
Placed June deadline applicants	1,930	1,520	1,815	1,675	1,655	1,585
All placed applicants	2,805	2,320	2,495	2,200	2,215	2,170

### P.16 Applications (all ages)

Statistic	2011	2012	2013	2014	2015	2016
June deadline applications	13,285	13,245	11,830	12,315	11,695	11,185
Offers	7,935	6,710	8,525	8,970	8,205	8,325
Offer rate	59.7%	50.6%	72.1%	72.8%	70.2%	74.4%

### P.17 Applicants (all ages) by sex

Statistic	Sex	2011	2012	2013	2014	2015	2016
June deadline applicants	Men	5,020	4,910	4,410	4,410	4,135	4,295
	Women	6,040	6,480	5,760	6,330	6,240	5,625
Placed June deadline applicants	Men	830	660	770	680	640	685
	Women	1,105	860	1,040	1,000	1,015	905
All placed applicants	Men	1,260	990	1,080	905	910	950
	Women	1,545	1,330	1,415	1,295	1,305	1,220

### P.18 Applications (all ages) by sex

Statistic	Sex	2011	2012	2013	2014	2015	2016
June deadline applications	Men	6,070	5,815	5,220	5,210	4,725	4,940
	Women	7,215	7,425	6,610	7,105	6,970	6,245
Offers	Men	4,165	3,395	4,070	4,060	3,400	3,835
	Women	3,770	3,310	4,460	4,910	4,805	4,490
Offer rate	Men	68.7%	58.4%	77.9%	77.9%	72.0%	77.7%
	Women	52.2%	44.6%	67.5%	69.1%	68.9%	71.8%

### P.19 Applicants (all ages) by POLAR3 quintile

Statistic	POLAR3 quintile	2011	2012	2013	2014	2015	2016
June deadline applicants	Quintile 1	1,970	2,070	1,890	2,070	1,925	1,875
	Quintile 2	2,705	2,795	2,565	2,745	2,755	2,660
	Quintile 3	3,030	3,085	2,715	2,870	2,775	2,660
	Quintile 4	1,830	1,885	1,675	1,745	1,645	1,565
	Quintile 5	1,495	1,525	1,300	1,290	1,255	1,125
Placed June deadline applicants	Quintile 1	305	235	295	275	265	255
	Quintile 2	525	415	495	455	475	450
	Quintile 3	600	495	585	580	540	570
	Quintile 4	295	220	255	220	230	200
	Quintile 5	200	145	175	155	145	105
All placed applicants	Quintile 1	440	380	395	365	355	335
	Quintile 2	710	600	680	590	615	615
	Quintile 3	850	770	795	735	745	765
	Quintile 4	455	315	355	290	300	270
	Quintile 5	345	250	255	220	195	170

### P.20 Applications (all ages) by POLAR3 quintile

Statistic	POLAR3 quintile	2011	2012	2013	2014	2015	2016
June deadline applications	Quintile 1	2,255	2,320	2,075	2,270	2,090	2,040
	Quintile 2	3,360	3,310	3,105	3,265	3,145	3,050
	Quintile 3	4,020	3,930	3,410	3,510	3,365	3,210
	Quintile 4	2,050	2,060	1,850	1,885	1,775	1,670
	Quintile 5	1,570	1,590	1,370	1,365	1,300	1,175
Offers	Quintile 1	1,215	1,055	1,340	1,505	1,380	1,405
	Quintile 2	2,015	1,625	2,220	2,390	2,235	2,290
	Quintile 3	2,495	2,060	2,555	2,640	2,410	2,440
	Quintile 4	1,240	1,085	1,340	1,400	1,265	1,275
	Quintile 5	955	865	1,055	1,020	910	890
Offer rate	Quintile 1	53.8%	45.4%	64.7%	66.3%	66.0%	68.8%
	Quintile 2	59.9%	49.1%	71.6%	73.1%	71.0%	75.0%
	Quintile 3	62.0%	52.5%	74.8%	75.2%	71.6%	75.9%
	Quintile 4	60.6%	52.6%	72.4%	74.5%	71.2%	76.5%
	Quintile 5	61.0%	54.5%	77.1%	74.5%	69.8%	75.7%

## P.21 Applicants (all ages) by ethnic group

Statistic	Ethnic group	2011	2012	2013	2014	2015	2016
June deadline applicants	Asian	4,360	4,465	4,120	4,330	4,170	4,285
	Black	1,460	1,505	1,330	1,275	1,330	1,200
	Mixed	310	345	285	310	345	315
	White	4,680	4,725	4,140	4,530	4,205	3,775
	Other	150	245	195	215	210	210
Placed June deadline applicants	Asian	955	740	950	855	880	940
	Black	175	140	175	165	145	125
	Mixed	50	45	45	45	50	40
	White	710	555	595	575	540	440
	Other	25	30	25	25	25	25
All placed applicants	Asian	1,345	1,170	1,315	1,155	1,240	1,285
	Black	325	270	255	225	195	180
	Mixed	70	70	70	60	65	55
	White	980	715	750	680	640	560
	Other	40	50	45	50	40	45

## P.22 Applications (all ages) by ethnic group

Statistic	Ethnic group	2011	2012	2013	2014	2015	2016
June deadline applications	Asian	5,975	5,775	5,280	5,470	5,080	5,215
	Black	1,590	1,600	1,440	1,335	1,380	1,245
	Mixed	350	375	330	340	385	340
	White	5,085	5,095	4,445	4,840	4,485	4,015
	Other	165	270	215	235	230	230
Offers	Asian	3,890	3,160	4,085	4,255	3,845	4,080
	Black	660	565	805	780	780	755
	Mixed	195	185	240	250	255	255
	White	3,025	2,595	3,150	3,455	3,100	2,960
	Other	95	135	165	175	150	175
Offer rate	Asian	65.1%	54.7%	77.3%	77.8%	75.7%	78.2%
	Black	41.6%	35.4%	56.1%	58.5%	56.5%	60.7%
	Mixed	56.3%	49.6%	72.6%	72.8%	66.2%	74.8%
	White	59.5%	51.0%	70.8%	71.4%	69.1%	73.8%
	Other	56.9%	51.1%	76.9%	73.3%	65.4%	75.3%

## Technical Notes and Definitions

### UCAS undergraduate scheme

#### Adjustment

Adjustment allows applicants who have met and exceeded the terms of their conditional firm offer to seek and find a place at another provider whilst keeping their place at their original firm choice provider.

#### Clearing

Clearing is a route for applicants that are not placed and holding no offers to find a place on courses with vacancies.

#### Cycle year

The UCAS application cycle which runs from September to October the following year. For example the 2016 cycle runs from September 2015 through to October 2016.

#### End of cycle

The point in the cycle to which the numbers in this report refer, and the point at which the cycle is closed such that no more applications or offers can be made, and no more applicants can be placed. Numbers reported at the end of cycle exclude information on a small number of applicants who cancelled during the cycle.

#### Extra

Applicants who are unsuccessful in obtaining an offer or decline all offers may be eligible to apply through Extra, where they can apply to one further course at a time. Extra operates from 25 February until early July. It provides applicants who are eligible the possibility of obtaining an offer before exam results are published and Clearing starts.

#### June 30 deadline

The deadline for main scheme applications. Applicants who apply after this date will go directly into Clearing.

#### Record of Prior Acceptance (RPA)

RPA is an acceptance route used when a provider informs UCAS of applicants it has accepted outside of the normal application process (e.g. individuals who have applied directly to the provider).

### Reporting groups

#### Ethnic group

High level grouping of ethnic origin as declared by the applicant: 'White', 'Black', 'Asian', 'Mixed', 'Other', 'Unknown'. Applicants who declare themselves as 'Unknown' ethnic origin are not reported in these tables, but are included in the associated csv data file.

#### POLAR3 quintile

Developed by HEFCE, POLAR3 classifies small areas across the UK into five groups according to their level of young participation in Higher Education. Each of these groups represents around 20 per cent of young people and is ranked from Quintile 1 (areas with the lowest young participation rates, considered as the most disadvantaged) to Quintile 5 (highest young participation rates, considered most advantaged). POLAR3 is based on the participation rates of young people between 2005 and 2009 who entered Higher Education between 2005-06 and 2010-11, therefore is most suitable for applicants aged 19 and under. These groups are assigned using the postcode declared by the applicant at the time of their application. If a UK postcode is invalid, considered unsafe for measurement or there is no link to Census geography possible then the applicant is not assigned to a quintile. Applicants with no POLAR3 quintile are not reported.

#### Sex

Sex as declared by the applicant.

### **SIMD quintile**

Scottish index of multiple deprivation (SIMD) for 2012 identifies small area concentrations of multiple deprivation across all of Scotland, providing a relative measure of deprivation amongst 6505 small areas (data zones) based on 7 socio-economic domains. These small areas are classified into five groups ranked from Quintile 1 (considered the most deprived) to Quintile 5 (considered least deprived), with equal populations in each quintile. Quintiles are assigned using the postcode declared by the applicant, applicants declaring invalid postcodes are classified as 'Not assigned' and are not reported.

SIMD is only defined for applicants domiciled in Scotland, therefore any applicants domiciled outside of Scotland cannot be assigned to an SIMD quintile and so are not reported for this measure.

SIMD is only reported for providers in Scotland. Application and entry rates by SIMD are reported in the 2016 End of Cycle Report and the 2016 cycle January deadline application rate report.

### **Statistics reported in the tables**

#### **All placed applicants**

The number of applicants placed for entry into higher education at the provider through one of their choices, including any choices made through Extra, or via Adjustment, Clearing or RPA.

#### **All placed applicants per 10,000 population**

The number of total UK domiciled 18 year old placed applicants for entry into higher education at the provider divided by the number of UK 18 year olds in the population, multiplied by 10,000. This gives the number of 18 year olds, for every 10,000 in the population, that were placed at the provider through one of their choices, including any choices made through Extra, or via Adjustment, Clearing or RPA. It is an alternative way of expressing the entry rate to a provider. By referencing the underlying population this statistic shows how the number of placed applicants is changing in relation to the available pool of potential applicants and so gives the chance that somebody from the group will be placed at a provider.

This statistic is only reported for 18 year olds.

#### **Average offer rate**

The offer rate that you might expect if the predicted grades and subject choice of applicants were the only factors that influenced whether an applicant was made an offer by the provider. The average offer rate is calculated by dividing applicants according to their specific combination of grades (for A levels the best three predicted grades are used, for BTECs, International Baccalaureate and Scottish Highers and Advanced Highers, predicted grades along with any grades already achieved upon applying are used) and subject choice. For each combination the number of main scheme offers is divided by the number of main scheme applications, to give an overall offer rate. This is then multiplied by the number of applications made by the group for which the average offer rate is being calculated (for example POLAR3 quintile 1), to give an average number of offers for that group. These average number of offers are then added together across all combinations of predicted grade and subject and divided by the number of main scheme applications from the group to give the average offer rate.

The average offer rate does not attempt to control for any other factors that may play a part in the decision to make an offer, such as the subject of the qualifications studied, their relevance to a course, or the grade in each subject; higher numbers of A levels being studied; the exact profile of grades predicted; personal statements; teacher references; interviews; or any other criteria (such as work experience or portfolios) that may be part of the admissions decision.

This statistic is only reported for 18 year olds.



### Contribution of group to the average offer rate

The way in which the average offer rate is defined means that the pattern of application and offers of a group (for example POLAR3 quintile 1) will always contribute, in part, to the average offer rate for that group. When this contribution is large, the average offer rate will mainly reflect the patterns for the group, meaning that the value of the average offer rate will be similar to the offer rate, the percentage point difference statistic will be small, and any real difference between the offer rate and what might be expected given the predicted grades and subject choices of the applicants will be difficult to detect.

Values of the contribution of group to the average offer rate range between 0 and 1. The closer the value is to 1 the greater the contribution a group makes to its own average offer rate.

This statistic is only reported for 18 year olds.

### Placed June deadline applicants

An applicant who has been placed for entry into higher education at the provider through a June deadline application.

### Placed June deadline applicants per 10,000 population

The number of UK domiciled 18 year old placed June deadline applicants at the provider divided by the number of UK 18 year olds in the population, multiplied by 10,000. This gives the number of 18 year olds, for every 10,000 in the population, that were placed at the provider through one of their June deadline applications. It is an alternative way of expressing the entry rate to a provider, but for placed June deadline applicants only. By referencing the underlying population this statistic shows how the number of placed June deadline applicants is changing in relation to the available pool of potential 18 year old applicants and so gives the chance that somebody from the group will be placed at a provider through a June deadline application.

This statistic is only reported for 18 year olds.

### June deadline applications

An application (or choice) to a course in higher education to the provider that is made by the June 30 deadline. Each applicant can make up to five choices this way. The number of June deadline applications does not include choices made through the following routes: Clearing, Extra, Adjustment and RPAs. Applications made to October deadline courses received after the October deadline are not included in these statistics.

### June deadline applicants

The number of applicants that made at least one application to the provider by the June 30 deadline.

### June deadline applicants per 10,000 population

The number of UK domiciled 18 year old June deadline applicants to the provider divided by the number of UK 18 year olds in the population, multiplied by 10,000. This gives the number of 18 year olds, for every 10,000 in the population, who applied by the June 30 deadline. It is equivalent to the application rate. By referencing the underlying population this statistic shows how the number of June deadline applicants is changing in relation to the available pool of potential 18 year old applicants and so gives the chance that somebody from the group will apply to a provider by the June 30 deadline.

This statistic is only reported for 18 year olds.

### Offers

An offer is defined as a provider's decision in response to an application to offer a place to an applicant, often subject to the applicant satisfying academic and/or other criteria, via a June deadline application (i.e. does not cover choices made through the following routes: Clearing, Extra, Adjustment and RPAs).

### Offer rate

The number of offers made divided by the number of June deadline applications. This gives the proportion of all June deadline applications to the provider that received an offer.

### Percentage point difference between offer rate and average offer rate

The offer rate minus the average offer rate.

The percentage point difference can be compared to the expected range of statistical variation resulting from the calculation of the average offer rate using the Average Offer Rate Lookup Table. Where the value of the percentage point difference lies outside of this range, the percentage point difference may be considered to represent a real difference between the offer rate and the average offer rate.

### Other definitions

#### Age

This analysis uses country-specific age definitions that align with the cut off points for school and college cohorts within the different administrations of the UK. For England and Wales, ages are defined on the 31 August, for Northern Ireland on the 1 July and for Scotland on the 28 February the following year. Defining ages in this way matches the assignment of children to school cohorts. For applicants outside of the UK a cohort cut off of 31 August has been used.

#### Provider

A higher education provider - a university or college.

#### UK domiciled

Declared area of permanent residence within England, Northern Ireland, Scotland and Wales. Applicants from the Channel Islands and Isle of Man are not included.