

## D26 De Montfort University

**Cycle years:** 2011 - 2016

**Cycle Reference Point:** End of Cycle

**Applicant coverage:** UK domiciled

**Reporting groups:** Sex, POLAR3, ethnic group

**Applicant statistics:** June deadline applicants, placed June deadline applicants, all placed applicants, June deadline applicants per 10,000 population, placed June deadline applicants per 10,000 population, all placed applicants per 10,000 population

**Application statistics:** June deadline applications, offers, offer rate, average offer rate, percentage point difference between offer rate and average offer rate, contribution of group to the average offer rate

**Non-disclosure controls:** To avoid the disclosure of information about any individual the following measures are taken

- Applicants, placed applicants, applications and offers are rounded to the nearest 5.
- Applicants/placed applicants per 10,000 population figures are reported as 0 if the applicant/placed applicant figures are rounded to 0.
- All statistics related to the offer rate are not reported when the number of applications for a group is less than 10. The percentage point difference between the offer rate and the average offer rate is not reported when the number of applications for a group is less than 50.
- Offer rates are reported as 0% if there are fewer than 5 offers, and 100% if the number of offers is within 5 of the number of applications. When the offer rate is reported as 0% or 100%, it is reported in italics.

### Contents:

18 year old applicants:	P.1
18 year old applications:	P.2
18 year old applicants by sex:	P.3
18 year old applications by sex:	P.4
18 year old applicants by POLAR3 quintile:	P.7
18 year old applications by POLAR3 quintile:	P.8
18 year old applicants by ethnic group:	P.11
18 year old applications by ethnic group:	P.12
Applicants (all ages):	P.15
Applications (all ages):	P.16
Applicants (all ages) by sex:	P.17
Applications (all ages) by sex:	P.18
Applicants (all ages) by POLAR3 quintile:	P.19
Applications (all ages) by POLAR3 quintile:	P.20
Applicants (all ages) by ethnic group:	P.21
Applications (all ages) by ethnic group:	P.22

## P.1 18 year old applicants

Statistic	2011	2012	2013	2014	2015	2016
June deadline applicants	11,025	10,190	9,650	9,310	11,145	11,795
Placed June deadline applicants	1,815	1,710	1,730	1,715	2,275	2,630
All placed applicants	2,305	2,060	2,035	2,210	2,905	3,190
June deadline applicants per 10,000 population	143.1	131.7	126.8	123.6	145.4	157.3
Placed June deadline applicants per 10,000	23.6	22.1	22.8	22.7	29.7	35.1
All placed applicants per 10,000 population	29.9	26.6	26.8	29.4	37.9	42.6

## P.2 18 year old applications

Statistic	2011	2012	2013	2014	2015	2016
June deadline applications	11,925	10,890	10,255	9,825	11,715	12,440
Offers	8,695	7,980	8,350	8,275	9,885	10,135
Offer rate	72.9%	73.3%	81.4%	84.2%	84.4%	81.5%

### P.3 18 year old applicants by sex

Statistic	Sex	2011	2012	2013	2014	2015	2016
June deadline applicants	Men	4,520	3,915	3,885	3,770	4,590	5,025
	Women	6,505	6,275	5,760	5,540	6,555	6,770
Placed June deadline applicants	Men	780	655	710	730	985	1,205
	Women	1,035	1,060	1,020	985	1,290	1,430
All placed applicants	Men	1,005	795	825	960	1,260	1,460
	Women	1,300	1,265	1,215	1,255	1,645	1,730
June deadline applicants per 10,000 population	Men	114.8	98.7	99.6	97.4	117.0	130.8
	Women	172.7	166.4	155.5	151.3	175.3	185.2
Placed June deadline applicants per 10,000 population	Men	19.8	16.5	18.2	18.8	25.1	31.3
	Women	27.5	28.1	27.6	26.9	34.6	39.1
All placed applicants per 10,000 population	Men	25.5	20.0	21.1	24.7	32.2	38.0
	Women	34.5	33.6	32.7	34.3	44.0	47.4

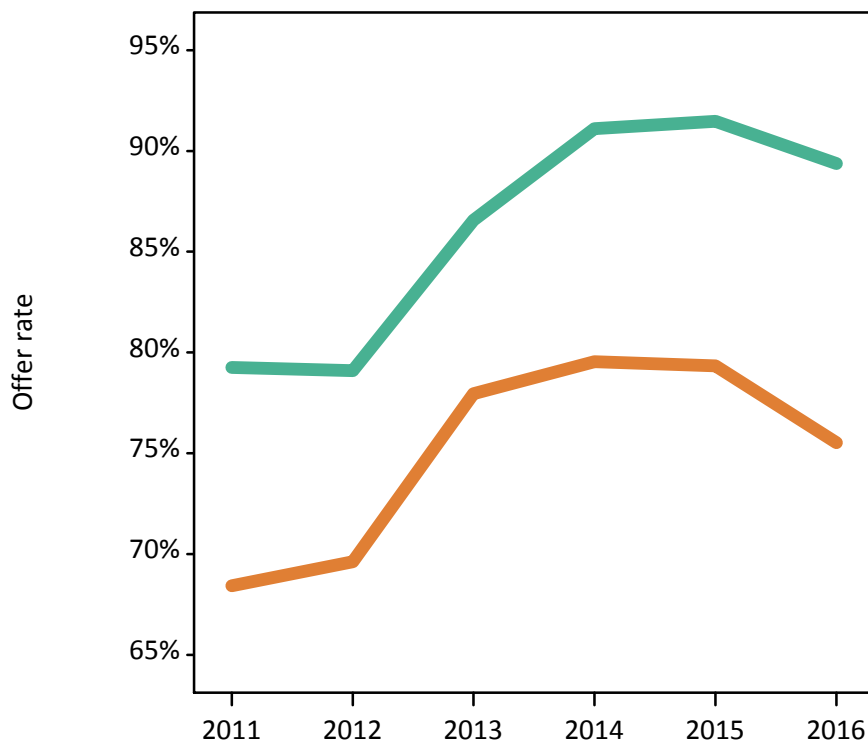
### P.4 18 year old applications by sex

Statistic	Sex	2011	2012	2013	2014	2015	2016
June deadline applications	Men	4,955	4,190	4,160	3,980	4,880	5,340
	Women	6,970	6,695	6,095	5,845	6,835	7,105
Offers	Men	3,925	3,315	3,600	3,625	4,465	4,770
	Women	4,770	4,660	4,750	4,650	5,420	5,365
Offer rate	Men	79.3%	79.1%	86.6%	91.1%	91.5%	89.4%
	Women	68.4%	69.6%	78.0%	79.5%	79.3%	75.5%
Average offer rate	Men	79.4%	79.6%	87.0%	91.6%	91.9%	89.6%
	Women	68.3%	69.3%	77.7%	79.2%	79.0%	75.4%
Percentage point difference between offer rate and average offer rate	Men	-0.1	-0.5	-0.4	-0.5	-0.4	-0.2
	Women	0.1	0.3	0.3	0.3	0.3	0.1
Contribution of group to the average offer rate	Men	0.581	0.574	0.598	0.616	0.608	0.617
	Women	0.702	0.733	0.726	0.739	0.720	0.712

### P.5 18 year old offer rate by sex

Note: The line for a group is not plotted when that group made fewer than 10 applications in any of the years from 2011-2016.

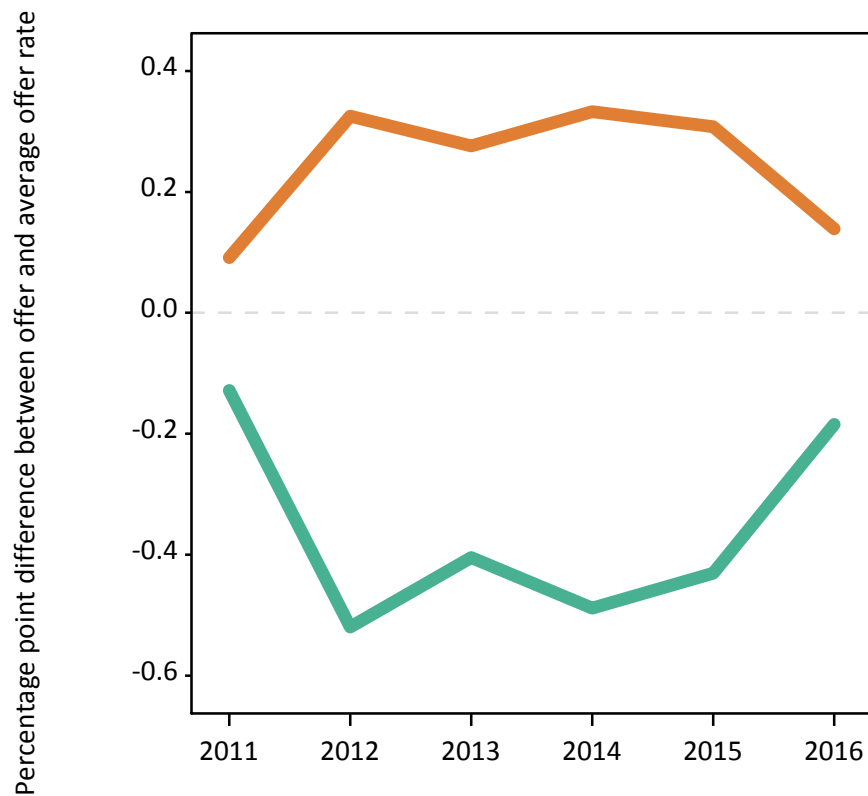
Men  
Women



### P.6 Percentage point difference between 18 year old offer rate and average offer rate by sex

Note: The line for a group is not plotted when that group made fewer than 50 applications in any of the years from 2011-2016.

Men  
Women



## P.7 18 year old applicants by POLAR3 quintile

Statistic	POLAR3 quintile	2011	2012	2013	2014	2015	2016
June deadline applicants	Quintile 1	1,325	1,245	1,230	1,280	1,505	1,550
	Quintile 2	2,035	1,985	1,925	1,915	2,435	2,500
	Quintile 3	2,400	2,200	2,130	2,020	2,450	2,635
	Quintile 4	2,525	2,300	2,180	1,965	2,345	2,560
	Quintile 5	2,730	2,450	2,170	2,110	2,380	2,490
Placed June deadline applicants	Quintile 1	205	215	235	235	320	315
	Quintile 2	325	285	330	305	480	520
	Quintile 3	365	375	375	370	495	585
	Quintile 4	465	425	400	385	500	620
	Quintile 5	455	410	390	415	475	585
All placed applicants	Quintile 1	245	255	275	295	390	390
	Quintile 2	395	340	395	395	595	620
	Quintile 3	460	440	435	470	640	710
	Quintile 4	585	510	480	500	640	755
	Quintile 5	620	510	450	545	635	710
June deadline applicants per 10,000 population	Quintile 1	92.3	87.3	88.2	91.9	107.3	114.7
	Quintile 2	135.2	132.4	130.5	130.9	164.0	173.0
	Quintile 3	155.9	142.3	139.7	134.3	159.6	175.4
	Quintile 4	161.1	144.9	139.5	127.4	149.9	165.9
	Quintile 5	164.8	146.0	131.3	129.4	142.3	150.8
Placed June deadline applicants per 10,000 population	Quintile 1	14.3	15.1	16.9	16.8	22.9	23.4
	Quintile 2	21.6	19.1	22.5	21.0	32.2	35.8
	Quintile 3	23.7	24.3	24.5	24.5	32.4	39.0
	Quintile 4	29.7	26.7	25.4	25.0	31.9	40.0
	Quintile 5	27.5	24.5	23.5	25.4	28.5	35.3
All placed applicants per 10,000 population	Quintile 1	17.0	17.8	19.6	21.3	27.8	28.7
	Quintile 2	26.4	22.7	26.7	26.9	40.0	42.8
	Quintile 3	30.0	28.5	28.5	31.3	41.7	47.2
	Quintile 4	37.2	32.1	30.8	32.6	40.9	48.8
	Quintile 5	37.4	30.5	27.2	33.4	38.1	43.0

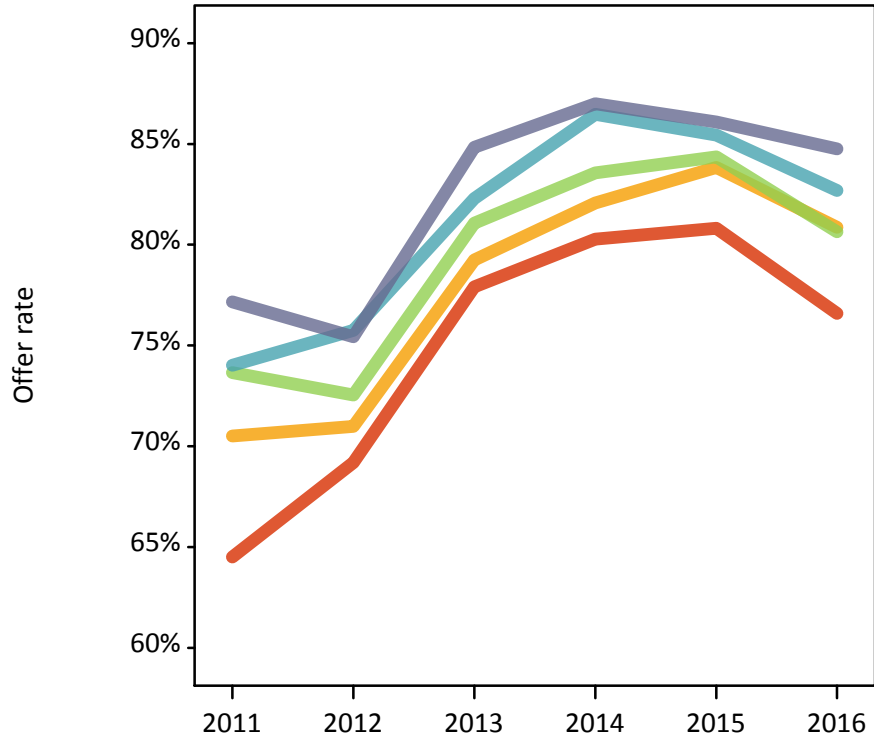
## P.8 18 year old applications by POLAR3 quintile

Statistic	POLAR3 quintile	2011	2012	2013	2014	2015	2016
June deadline applications	Quintile 1	1,435	1,345	1,310	1,345	1,565	1,630
	Quintile 2	2,185	2,095	2,035	2,010	2,565	2,635
	Quintile 3	2,570	2,315	2,240	2,115	2,550	2,780
	Quintile 4	2,775	2,485	2,345	2,110	2,470	2,715
	Quintile 5	2,945	2,640	2,315	2,230	2,530	2,630
Offers	Quintile 1	925	930	1,020	1,080	1,265	1,245
	Quintile 2	1,540	1,490	1,610	1,650	2,150	2,130
	Quintile 3	1,895	1,680	1,815	1,770	2,155	2,240
	Quintile 4	2,055	1,885	1,930	1,825	2,110	2,245
	Quintile 5	2,270	1,990	1,965	1,940	2,180	2,230
Offer rate	Quintile 1	64.5%	69.2%	77.9%	80.3%	80.8%	76.6%
	Quintile 2	70.5%	71.0%	79.3%	82.1%	83.8%	80.9%
	Quintile 3	73.7%	72.5%	81.1%	83.6%	84.4%	80.6%
	Quintile 4	74.0%	75.8%	82.3%	86.5%	85.4%	82.7%
	Quintile 5	77.2%	75.4%	84.8%	87.0%	86.1%	84.8%
Average offer rate	Quintile 1	67.9%	69.3%	79.2%	82.1%	82.2%	78.8%
	Quintile 2	71.7%	72.3%	79.4%	82.4%	84.1%	81.0%
	Quintile 3	73.9%	73.2%	81.6%	83.7%	84.2%	81.0%
	Quintile 4	72.8%	74.2%	82.2%	85.0%	84.9%	81.9%
	Quintile 5	75.5%	75.2%	83.6%	86.9%	85.7%	83.8%
Percentage point difference between offer rate and average offer rate	Quintile 1	-3.4	-0.1	-1.3	-1.8	-1.4	-2.2
	Quintile 2	-1.2	-1.3	-0.2	-0.4	-0.3	-0.1
	Quintile 3	-0.3	-0.7	-0.5	-0.1	0.2	-0.4
	Quintile 4	1.2	1.6	0.1	1.5	0.5	0.8
	Quintile 5	1.7	0.2	1.3	0.1	0.4	1.0
Contribution of group to the average offer rate	Quintile 1	0.192	0.195	0.201	0.208	0.190	0.187
	Quintile 2	0.236	0.253	0.269	0.274	0.266	0.263
	Quintile 3	0.265	0.265	0.276	0.284	0.266	0.269
	Quintile 4	0.285	0.283	0.289	0.275	0.261	0.269
	Quintile 5	0.311	0.310	0.298	0.311	0.279	0.268

### P.9 18 year old offer rate by POLAR3 quintile

Note: The line for a group is not plotted when that group made fewer than 10 applications in any of the years from 2011-2016.

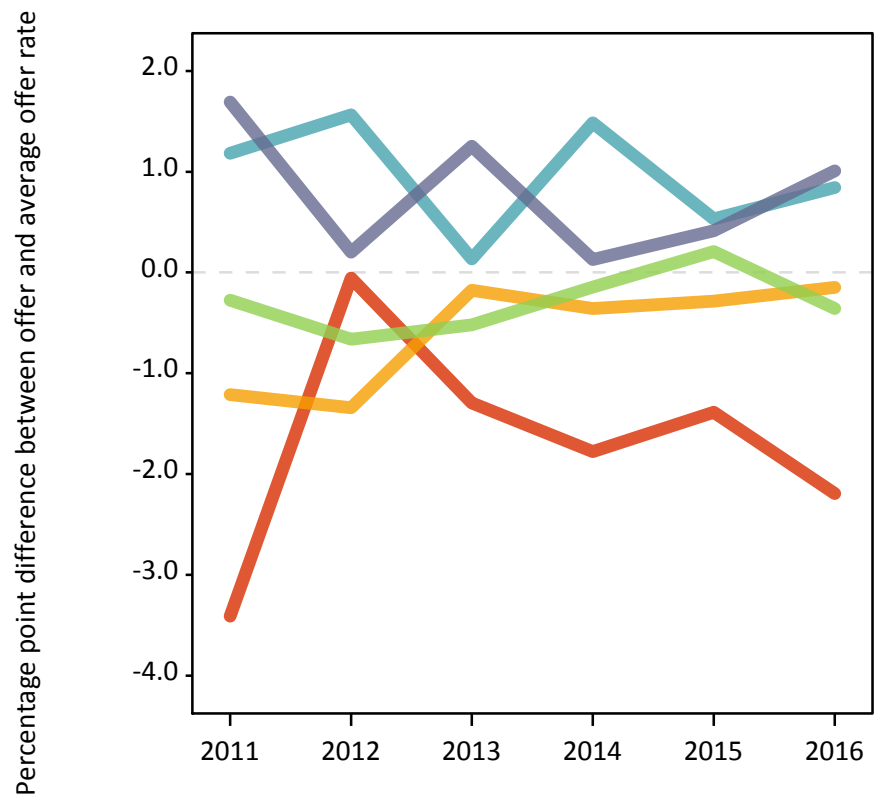
- Quintile 1
- Quintile 2
- Quintile 3
- Quintile 4
- Quintile 5



### P.10 Percentage point difference between 18 year old offer rate and average offer rate by POLAR3 quintile

Note: The line for a group is not plotted when that group made fewer than 50 applications in any of the years from 2011-2016.

- Quintile 1
- Quintile 2
- Quintile 3
- Quintile 4
- Quintile 5



## P.11 18 year old applicants by ethnic group

Statistic	Ethnic group	2011	2012	2013	2014	2015	2016
June deadline applicants	Asian	2,140	1,980	1,840	1,935	2,220	2,340
	Black	1,195	1,045	1,135	1,070	1,450	1,755
	Mixed	410	370	385	370	495	525
	White	7,130	6,685	6,145	5,805	6,775	6,945
	Other	90	75	115	95	150	160
Placed June deadline applicants	Asian	410	355	375	425	495	555
	Black	180	185	220	205	355	440
	Mixed	65	60	65	70	105	135
	White	1,140	1,095	1,045	990	1,290	1,470
	Other	10	10	20	20	25	20
All placed applicants	Asian	600	490	500	600	680	715
	Black	260	240	295	310	545	610
	Mixed	75	75	80	85	130	160
	White	1,345	1,230	1,130	1,175	1,495	1,655
	Other	15	15	25	30	40	30
June deadline applicants per 10,000 population	Asian	339.2	305.7	278.7	285.0	313.4	325.4
	Black	437.5	371.1	382.6	353.0	454.9	560.9
	Mixed	168.9	142.4	142.4	128.3	160.2	167.2
	White	110.2	103.5	97.7	94.1	108.8	114.8
	Other	111.1	82.5	124.6	103.1	154.6	160.1
Placed June deadline applicants per 10,000 population	Asian	65.4	54.5	57.2	62.4	69.9	77.1
	Black	66.6	65.7	73.4	67.3	111.2	140.9
	Mixed	26.8	23.8	23.7	23.6	33.4	42.6
	White	17.6	17.0	16.6	16.0	20.7	24.3
	Other	13.6	11.3	21.0	21.5	25.9	21.2
All placed applicants per 10,000 population	Asian	94.9	76.0	75.8	88.6	96.2	99.5
	Black	95.8	85.2	99.0	102.3	171.5	195.3
	Mixed	31.0	28.0	29.6	29.9	41.5	51.2
	White	20.7	19.0	18.0	19.1	24.0	27.4
	Other	16.0	18.1	26.5	30.1	40.5	30.2



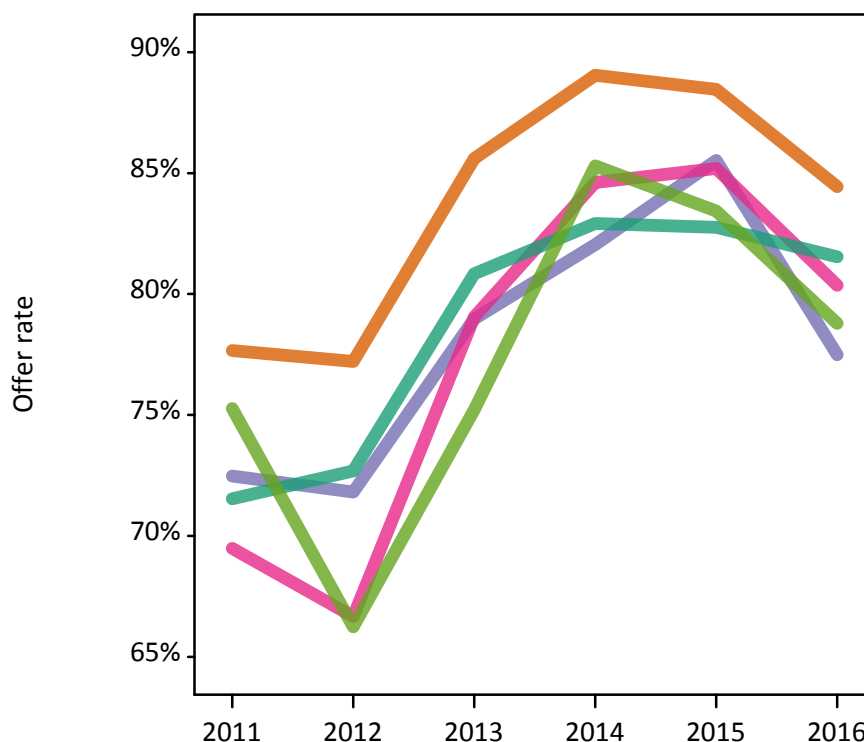
## P.12 18 year old applications by ethnic group

Statistic	Ethnic group	2011	2012	2013	2014	2015	2016
June deadline applications	Asian	2,475	2,245	2,055	2,120	2,400	2,550
	Black	1,250	1,090	1,165	1,105	1,470	1,800
	Mixed	440	385	400	390	520	550
	White	7,590	7,055	6,480	6,075	7,100	7,305
	Other	95	75	115	100	155	165
Offers	Asian	1,925	1,730	1,760	1,885	2,125	2,155
	Black	905	780	920	905	1,260	1,395
	Mixed	305	260	315	330	445	440
	White	5,430	5,130	5,240	5,035	5,875	5,955
	Other	70	50	90	85	130	130
Offer rate	Asian	77.7%	77.2%	85.6%	89.0%	88.5%	84.4%
	Black	72.5%	71.8%	79.0%	82.0%	85.5%	77.5%
	Mixed	69.5%	66.7%	79.1%	84.6%	85.2%	80.4%
	White	71.5%	72.7%	80.8%	82.9%	82.8%	81.5%
	Other	75.3%	66.2%	75.2%	85.3%	83.4%	78.8%
Average offer rate	Asian	77.8%	78.1%	85.5%	88.5%	87.6%	83.7%
	Black	73.2%	74.3%	81.7%	84.9%	85.6%	80.4%
	Mixed	72.1%	71.4%	80.1%	85.5%	85.7%	81.5%
	White	71.2%	71.7%	80.2%	82.5%	82.9%	80.9%
	Other	75.4%	71.0%	78.7%	85.0%	86.7%	82.7%
Percentage point difference between offer rate and average offer rate	Asian	-0.1	-0.9	0.1	0.6	0.8	0.7
	Black	-0.7	-2.5	-2.7	-2.9	-0.1	-2.9
	Mixed	-2.6	-4.7	-1.0	-0.9	-0.5	-1.1
	White	0.3	1.0	0.6	0.4	-0.1	0.7
	Other	-0.1	-4.8	-3.4	0.3	-3.3	-4.0
Contribution of group to the average offer rate	Asian	0.398	0.401	0.379	0.387	0.338	0.336
	Black	0.197	0.194	0.215	0.217	0.200	0.236
	Mixed	0.101	0.104	0.103	0.123	0.111	0.091
	White	0.727	0.734	0.713	0.708	0.680	0.667
	Other	0.069	0.084	0.077	0.135	0.060	0.061

### P.13 18 year old offer rate by ethnic group

Note: The line for a group is not plotted when that group made fewer than 10 applications in any of the years from 2011-2016.

- Asian
- Black
- Mixed
- White
- Other



### P.14 Percentage point difference between 18 year old offer rate and average offer rate by ethnic group

Note: The line for a group is not plotted when that group made fewer than 50 applications in any of the years from 2011-2016.

- Asian
- Black
- Mixed
- White
- Other



### P.15 Applicants (all ages)

Statistic	2011	2012	2013	2014	2015	2016
June deadline applicants	22,120	19,785	19,290	19,335	21,715	22,815
Placed June deadline applicants	3,985	3,560	3,860	3,825	4,470	5,000
All placed applicants	4,890	4,385	4,600	4,955	5,780	6,205

### P.16 Applications (all ages)

Statistic	2011	2012	2013	2014	2015	2016
June deadline applications	24,650	21,735	21,000	20,775	23,325	24,485
Offers	15,110	13,630	14,980	15,055	17,150	17,490
Offer rate	61.3%	62.7%	71.3%	72.5%	73.5%	71.4%

### P.17 Applicants (all ages) by sex

Statistic	Sex	2011	2012	2013	2014	2015	2016
June deadline applicants	Men	9,240	7,815	7,610	7,670	8,860	9,475
	Women	12,880	11,975	11,680	11,670	12,855	13,340
Placed June deadline applicants	Men	1,785	1,410	1,585	1,625	1,930	2,225
	Women	2,200	2,150	2,275	2,200	2,540	2,780
All placed applicants	Men	2,215	1,760	1,915	2,160	2,560	2,805
	Women	2,675	2,625	2,685	2,795	3,225	3,400

### P.18 Applications (all ages) by sex

Statistic	Sex	2011	2012	2013	2014	2015	2016
June deadline applications	Men	10,420	8,650	8,370	8,250	9,625	10,240
	Women	14,225	13,085	12,630	12,525	13,700	14,250
Offers	Men	7,070	5,970	6,535	6,745	7,960	8,265
	Women	8,040	7,660	8,445	8,310	9,190	9,225
Offer rate	Men	67.8%	69.0%	78.1%	81.7%	82.7%	80.7%
	Women	56.5%	58.6%	66.9%	66.3%	67.1%	64.7%

### P.19 Applicants (all ages) by POLAR3 quintile

Statistic	POLAR3 quintile	2011	2012	2013	2014	2015	2016
June deadline applicants	Quintile 1	3,010	2,800	2,790	3,080	3,385	3,595
	Quintile 2	4,415	4,080	4,065	4,295	4,920	5,000
	Quintile 3	4,830	4,295	4,230	4,115	4,740	5,060
	Quintile 4	4,795	4,165	4,100	3,850	4,320	4,605
	Quintile 5	5,040	4,420	4,075	3,965	4,295	4,425
Placed June deadline applicants	Quintile 1	545	480	560	600	710	725
	Quintile 2	775	660	790	780	955	985
	Quintile 3	765	730	810	760	940	1,070
	Quintile 4	945	845	865	845	940	1,125
	Quintile 5	950	840	825	830	915	1,080
All placed applicants	Quintile 1	640	590	645	750	875	890
	Quintile 2	920	815	960	1,025	1,205	1,210
	Quintile 3	945	885	965	1,010	1,210	1,320
	Quintile 4	1,160	1,020	1,040	1,085	1,215	1,410
	Quintile 5	1,220	1,065	975	1,080	1,260	1,350

### P.20 Applications (all ages) by POLAR3 quintile

Statistic	POLAR3 quintile	2011	2012	2013	2014	2015	2016
June deadline applications	Quintile 1	3,410	3,140	3,055	3,320	3,610	3,875
	Quintile 2	4,870	4,405	4,395	4,575	5,260	5,325
	Quintile 3	5,265	4,605	4,545	4,360	5,005	5,395
	Quintile 4	5,415	4,630	4,520	4,190	4,695	4,960
	Quintile 5	5,650	4,920	4,445	4,300	4,690	4,800
Offers	Quintile 1	1,790	1,720	1,965	2,200	2,415	2,465
	Quintile 2	2,840	2,620	2,990	3,145	3,755	3,705
	Quintile 3	3,230	2,895	3,255	3,200	3,685	3,830
	Quintile 4	3,460	3,070	3,365	3,160	3,580	3,705
	Quintile 5	3,775	3,310	3,380	3,325	3,665	3,700
Offer rate	Quintile 1	52.6%	54.7%	64.2%	66.3%	66.9%	63.6%
	Quintile 2	58.3%	59.5%	68.0%	68.8%	71.4%	69.6%
	Quintile 3	61.4%	62.8%	71.6%	73.4%	73.7%	71.0%
	Quintile 4	63.8%	66.3%	74.5%	75.5%	76.3%	74.7%
	Quintile 5	66.8%	67.2%	76.0%	77.3%	78.2%	77.1%

## P.21 Applicants (all ages) by ethnic group

Statistic	Ethnic group	2011	2012	2013	2014	2015	2016
June deadline applicants	Asian	4,615	4,110	3,975	4,015	4,500	4,580
	Black	3,240	2,945	2,990	3,045	3,780	4,355
	Mixed	860	775	770	840	1,000	1,060
	White	13,025	11,605	11,195	11,090	11,980	12,295
	Other	210	240	240	245	300	360
Placed June deadline applicants	Asian	880	775	875	885	1,005	1,095
	Black	490	485	550	565	805	960
	Mixed	150	135	150	165	210	245
	White	2,415	2,110	2,215	2,140	2,365	2,610
	Other	30	35	40	45	55	60
All placed applicants	Asian	1,215	1,090	1,170	1,295	1,430	1,450
	Black	650	665	730	855	1,185	1,345
	Mixed	170	165	190	205	275	305
	White	2,785	2,380	2,420	2,505	2,770	2,975
	Other	35	55	55	65	80	85

## P.22 Applications (all ages) by ethnic group

Statistic	Ethnic group	2011	2012	2013	2014	2015	2016
June deadline applications	Asian	5,455	4,785	4,530	4,445	4,990	5,075
	Black	3,580	3,220	3,170	3,195	3,990	4,570
	Mixed	940	840	845	915	1,075	1,130
	White	14,240	12,500	12,080	11,840	12,765	13,135
	Other	230	270	255	260	330	400
Offers	Asian	3,660	3,305	3,590	3,575	4,040	3,935
	Black	1,725	1,635	1,855	1,990	2,595	2,795
	Mixed	535	495	570	650	775	805
	White	8,925	7,975	8,680	8,550	9,390	9,550
	Other	140	150	190	205	230	285
Offer rate	Asian	67.1%	69.0%	79.3%	80.5%	80.9%	77.5%
	Black	48.2%	50.8%	58.5%	62.2%	65.0%	61.2%
	Mixed	57.0%	58.9%	67.7%	70.9%	72.0%	71.1%
	White	62.7%	63.8%	71.9%	72.2%	73.6%	72.7%
	Other	59.7%	55.6%	74.4%	77.9%	69.1%	71.3%

## Technical Notes and Definitions

### UCAS undergraduate scheme

#### Adjustment

Adjustment allows applicants who have met and exceeded the terms of their conditional firm offer to seek and find a place at another provider whilst keeping their place at their original firm choice provider.

#### Clearing

Clearing is a route for applicants that are not placed and holding no offers to find a place on courses with vacancies.

#### Cycle year

The UCAS application cycle which runs from September to October the following year. For example the 2016 cycle runs from September 2015 through to October 2016.

#### End of cycle

The point in the cycle to which the numbers in this report refer, and the point at which the cycle is closed such that no more applications or offers can be made, and no more applicants can be placed. Numbers reported at the end of cycle exclude information on a small number of applicants who cancelled during the cycle.

#### Extra

Applicants who are unsuccessful in obtaining an offer or decline all offers may be eligible to apply through Extra, where they can apply to one further course at a time. Extra operates from 25 February until early July. It provides applicants who are eligible the possibility of obtaining an offer before exam results are published and Clearing starts.

#### June 30 deadline

The deadline for main scheme applications. Applicants who apply after this date will go directly into Clearing.

#### Record of Prior Acceptance (RPA)

RPA is an acceptance route used when a provider informs UCAS of applicants it has accepted outside of the normal application process (e.g. individuals who have applied directly to the provider).

### Reporting groups

#### Ethnic group

High level grouping of ethnic origin as declared by the applicant: 'White', 'Black', 'Asian', 'Mixed', 'Other', 'Unknown'. Applicants who declare themselves as 'Unknown' ethnic origin are not reported in these tables, but are included in the associated csv data file.

#### POLAR3 quintile

Developed by HEFCE, POLAR3 classifies small areas across the UK into five groups according to their level of young participation in Higher Education. Each of these groups represents around 20 per cent of young people and is ranked from Quintile 1 (areas with the lowest young participation rates, considered as the most disadvantaged) to Quintile 5 (highest young participation rates, considered most advantaged). POLAR3 is based on the participation rates of young people between 2005 and 2009 who entered Higher Education between 2005-06 and 2010-11, therefore is most suitable for applicants aged 19 and under. These groups are assigned using the postcode declared by the applicant at the time of their application. If a UK postcode is invalid, considered unsafe for measurement or there is no link to Census geography possible then the applicant is not assigned to a quintile. Applicants with no POLAR3 quintile are not reported.

#### Sex

Sex as declared by the applicant.

### **SIMD quintile**

Scottish index of multiple deprivation (SIMD) for 2012 identifies small area concentrations of multiple deprivation across all of Scotland, providing a relative measure of deprivation amongst 6505 small areas (data zones) based on 7 socio-economic domains. These small areas are classified into five groups ranked from Quintile 1 (considered the most deprived) to Quintile 5 (considered least deprived), with equal populations in each quintile. Quintiles are assigned using the postcode declared by the applicant, applicants declaring invalid postcodes are classified as 'Not assigned' and are not reported.

SIMD is only defined for applicants domiciled in Scotland, therefore any applicants domiciled outside of Scotland cannot be assigned to an SIMD quintile and so are not reported for this measure.

SIMD is only reported for providers in Scotland. Application and entry rates by SIMD are reported in the 2016 End of Cycle Report and the 2016 cycle January deadline application rate report.

### **Statistics reported in the tables**

#### **All placed applicants**

The number of applicants placed for entry into higher education at the provider through one of their choices, including any choices made through Extra, or via Adjustment, Clearing or RPA.

#### **All placed applicants per 10,000 population**

The number of total UK domiciled 18 year old placed applicants for entry into higher education at the provider divided by the number of UK 18 year olds in the population, multiplied by 10,000. This gives the number of 18 year olds, for every 10,000 in the population, that were placed at the provider through one of their choices, including any choices made through Extra, or via Adjustment, Clearing or RPA. It is an alternative way of expressing the entry rate to a provider. By referencing the underlying population this statistic shows how the number of placed applicants is changing in relation to the available pool of potential applicants and so gives the chance that somebody from the group will be placed at a provider.

This statistic is only reported for 18 year olds.

#### **Average offer rate**

The offer rate that you might expect if the predicted grades and subject choice of applicants were the only factors that influenced whether an applicant was made an offer by the provider. The average offer rate is calculated by dividing applicants according to their specific combination of grades (for A levels the best three predicted grades are used, for BTECs, International Baccalaureate and Scottish Highers and Advanced Highers, predicted grades along with any grades already achieved upon applying are used) and subject choice. For each combination the number of main scheme offers is divided by the number of main scheme applications, to give an overall offer rate. This is then multiplied by the number of applications made by the group for which the average offer rate is being calculated (for example POLAR3 quintile 1), to give an average number of offers for that group. These average number of offers are then added together across all combinations of predicted grade and subject and divided by the number of main scheme applications from the group to give the average offer rate.

The average offer rate does not attempt to control for any other factors that may play a part in the decision to make an offer, such as the subject of the qualifications studied, their relevance to a course, or the grade in each subject; higher numbers of A levels being studied; the exact profile of grades predicted; personal statements; teacher references; interviews; or any other criteria (such as work experience or portfolios) that may be part of the admissions decision.

This statistic is only reported for 18 year olds.



### Contribution of group to the average offer rate

The way in which the average offer rate is defined means that the pattern of application and offers of a group (for example POLAR3 quintile 1) will always contribute, in part, to the average offer rate for that group. When this contribution is large, the average offer rate will mainly reflect the patterns for the group, meaning that the value of the average offer rate will be similar to the offer rate, the percentage point difference statistic will be small, and any real difference between the offer rate and what might be expected given the predicted grades and subject choices of the applicants will be difficult to detect.

Values of the contribution of group to the average offer rate range between 0 and 1. The closer the value is to 1 the greater the contribution a group makes to its own average offer rate.

This statistic is only reported for 18 year olds.

### Placed June deadline applicants

An applicant who has been placed for entry into higher education at the provider through a June deadline application.

### Placed June deadline applicants per 10,000 population

The number of UK domiciled 18 year old placed June deadline applicants at the provider divided by the number of UK 18 year olds in the population, multiplied by 10,000. This gives the number of 18 year olds, for every 10,000 in the population, that were placed at the provider through one of their June deadline applications. It is an alternative way of expressing the entry rate to a provider, but for placed June deadline applicants only. By referencing the underlying population this statistic shows how the number of placed June deadline applicants is changing in relation to the available pool of potential 18 year old applicants and so gives the chance that somebody from the group will be placed at a provider through a June deadline application.

This statistic is only reported for 18 year olds.

### June deadline applications

An application (or choice) to a course in higher education to the provider that is made by the June 30 deadline. Each applicant can make up to five choices this way. The number of June deadline applications does not include choices made through the following routes: Clearing, Extra, Adjustment and RPAs. Applications made to October deadline courses received after the October deadline are not included in these statistics.

### June deadline applicants

The number of applicants that made at least one application to the provider by the June 30 deadline.

### June deadline applicants per 10,000 population

The number of UK domiciled 18 year old June deadline applicants to the provider divided by the number of UK 18 year olds in the population, multiplied by 10,000. This gives the number of 18 year olds, for every 10,000 in the population, who applied by the June 30 deadline. It is equivalent to the application rate. By referencing the underlying population this statistic shows how the number of June deadline applicants is changing in relation to the available pool of potential 18 year old applicants and so gives the chance that somebody from the group will apply to a provider by the June 30 deadline.

This statistic is only reported for 18 year olds.

### Offers

An offer is defined as a provider's decision in response to an application to offer a place to an applicant, often subject to the applicant satisfying academic and/or other criteria, via a June deadline application (i.e. does not cover choices made through the following routes: Clearing, Extra, Adjustment and RPAs).

### Offer rate

The number of offers made divided by the number of June deadline applications. This gives the proportion of all June deadline applications to the provider that received an offer.

### Percentage point difference between offer rate and average offer rate

The offer rate minus the average offer rate.

The percentage point difference can be compared to the expected range of statistical variation resulting from the calculation of the average offer rate using the Average Offer Rate Lookup Table. Where the value of the percentage point difference lies outside of this range, the percentage point difference may be considered to represent a real difference between the offer rate and the average offer rate.

### Other definitions

#### Age

This analysis uses country-specific age definitions that align with the cut off points for school and college cohorts within the different administrations of the UK. For England and Wales, ages are defined on the 31 August, for Northern Ireland on the 1 July and for Scotland on the 28 February the following year. Defining ages in this way matches the assignment of children to school cohorts. For applicants outside of the UK a cohort cut off of 31 August has been used.

#### Provider

A higher education provider - a university or college.

#### UK domiciled

Declared area of permanent residence within England, Northern Ireland, Scotland and Wales. Applicants from the Channel Islands and Isle of Man are not included.