

K12 Keele University

Cycle years: 2011 - 2016

Cycle Reference Point: End of Cycle

Applicant coverage: UK domiciled

Reporting groups: Sex, POLAR3, ethnic group

Applicant statistics: June deadline applicants, placed June deadline applicants, all placed applicants, June deadline applicants per 10,000 population, placed June deadline applicants per 10,000 population, all placed applicants per 10,000 population

Application statistics: June deadline applications, offers, offer rate, average offer rate, percentage point difference between offer rate and average offer rate, contribution of group to the average offer rate

Non-disclosure controls: To avoid the disclosure of information about any individual the following measures are taken

- Applicants, placed applicants, applications and offers are rounded to the nearest 5.
- Applicants/placed applicants per 10,000 population figures are reported as 0 if the applicant/placed applicant figures are rounded to 0.
- All statistics related to the offer rate are not reported when the number of applications for a group is less than 10. The percentage point difference between the offer rate and the average offer rate is not reported when the number of applications for a group is less than 50.
- Offer rates are reported as 0% if there are fewer than 5 offers, and 100% if the number of offers is within 5 of the number of applications. When the offer rate is reported as 0% or 100%, it is reported in italics.

Contents:

18 year old applicants:	P.1
18 year old applications:	P.2
18 year old applicants by sex:	P.3
18 year old applications by sex:	P.4
18 year old applicants by POLAR3 quintile:	P.7
18 year old applications by POLAR3 quintile:	P.8
18 year old applicants by ethnic group:	P.11
18 year old applications by ethnic group:	P.12
Applicants (all ages):	P.15
Applications (all ages):	P.16
Applicants (all ages) by sex:	P.17
Applications (all ages) by sex:	P.18
Applicants (all ages) by POLAR3 quintile:	P.19
Applications (all ages) by POLAR3 quintile:	P.20
Applicants (all ages) by ethnic group:	P.21
Applications (all ages) by ethnic group:	P.22

P.1 18 year old applicants

Statistic	2011	2012	2013	2014	2015	2016
June deadline applicants	9,650	9,610	9,650	9,625	8,995	9,175
Placed June deadline applicants	1,110	1,025	990	1,135	1,110	1,110
All placed applicants	1,145	1,145	1,150	1,230	1,475	1,565
June deadline applicants per 10,000 population	125.3	124.2	126.8	127.8	117.4	122.4
Placed June deadline applicants per 10,000	14.4	13.3	13.0	15.1	14.5	14.8
All placed applicants per 10,000 population	14.9	14.8	15.1	16.3	19.2	20.9

P.2 18 year old applications

Statistic	2011	2012	2013	2014	2015	2016
June deadline applications	10,140	10,055	10,080	10,030	9,335	9,525
Offers	6,625	6,420	6,980	7,495	7,005	6,845
Offer rate	65.4%	63.9%	69.2%	74.7%	75.1%	71.9%

P.3 18 year old applicants by sex

Statistic	Sex	2011	2012	2013	2014	2015	2016
June deadline applicants	Men	4,355	4,005	4,025	4,105	3,680	3,645
	Women	5,295	5,605	5,625	5,525	5,315	5,525
Placed June deadline applicants	Men	500	430	420	495	465	465
	Women	610	595	570	640	645	645
All placed applicants	Men	520	485	505	535	635	690
	Women	625	660	645	695	835	875
June deadline applicants per 10,000 population	Men	110.7	100.9	103.0	106.0	93.8	94.9
	Women	140.6	148.7	151.8	150.9	142.2	151.2
Placed June deadline applicants per 10,000 population	Men	12.7	10.8	10.8	12.8	11.9	12.1
	Women	16.2	15.8	15.4	17.5	17.3	17.6
All placed applicants per 10,000 population	Men	13.2	12.2	12.9	13.8	16.2	18.0
	Women	16.6	17.5	17.4	19.0	22.4	23.9

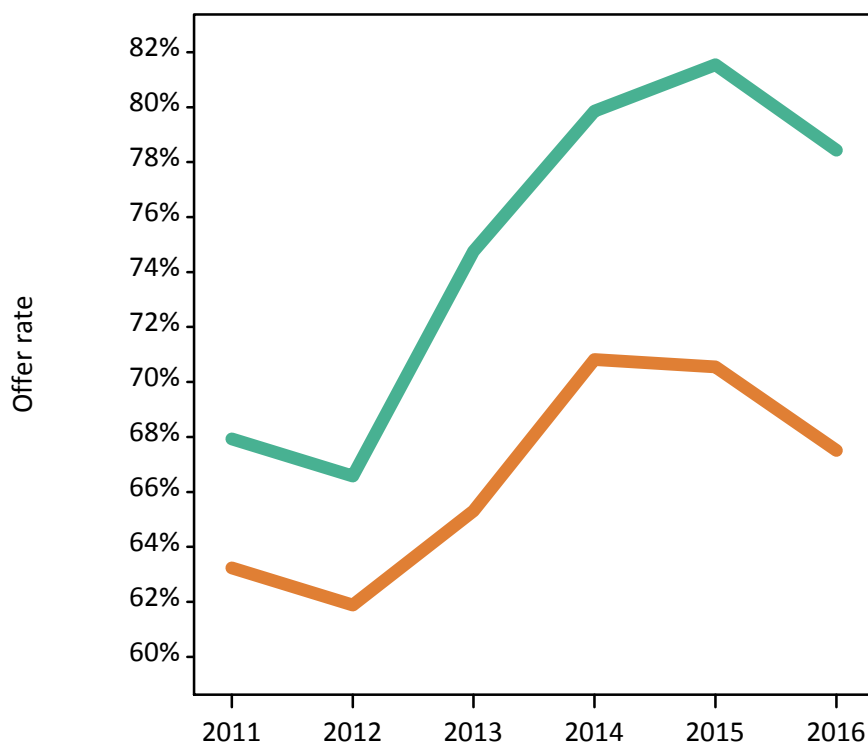
P.4 18 year old applications by sex

Statistic	Sex	2011	2012	2013	2014	2015	2016
June deadline applications	Men	4,605	4,230	4,195	4,300	3,820	3,795
	Women	5,530	5,825	5,885	5,730	5,515	5,735
Offers	Men	3,130	2,815	3,135	3,435	3,115	2,975
	Women	3,500	3,605	3,840	4,060	3,890	3,870
Offer rate	Men	67.9%	66.6%	74.8%	79.9%	81.5%	78.4%
	Women	63.2%	61.9%	65.3%	70.8%	70.5%	67.5%
Average offer rate	Men	68.6%	67.7%	76.1%	80.5%	82.1%	79.0%
	Women	62.7%	61.0%	64.4%	70.4%	70.1%	67.1%
Percentage point difference between offer rate and average offer rate	Men	-0.7	-1.2	-1.3	-0.6	-0.6	-0.6
	Women	0.6	0.8	0.9	0.5	0.4	0.4
Contribution of group to the average offer rate	Men	0.567	0.563	0.566	0.566	0.560	0.557
	Women	0.640	0.682	0.690	0.674	0.695	0.707

P.5 18 year old offer rate by sex

Note: The line for a group is not plotted when that group made fewer than 10 applications in any of the years from 2011-2016.

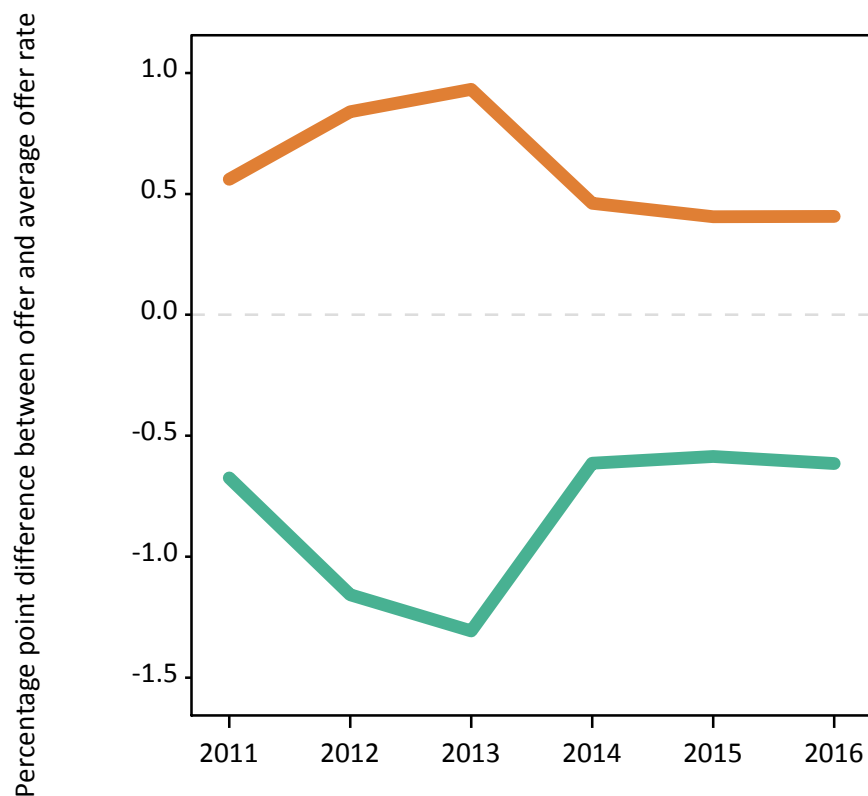
Men
Women



P.6 Percentage point difference between 18 year old offer rate and average offer rate by sex

Note: The line for a group is not plotted when that group made fewer than 50 applications in any of the years from 2011-2016.

Men
Women



P.7 18 year old applicants by POLAR3 quintile

Statistic	POLAR3 quintile	2011	2012	2013	2014	2015	2016
June deadline applicants	Quintile 1	1,100	1,140	1,080	1,115	1,190	1,175
	Quintile 2	1,625	1,650	1,620	1,710	1,625	1,660
	Quintile 3	1,885	1,870	1,990	1,945	1,845	1,845
	Quintile 4	2,145	2,110	2,210	2,125	1,930	2,045
	Quintile 5	2,885	2,815	2,740	2,715	2,390	2,420
Placed June deadline applicants	Quintile 1	115	140	115	150	200	165
	Quintile 2	180	180	165	200	205	230
	Quintile 3	200	200	230	195	215	230
	Quintile 4	260	235	210	255	225	230
	Quintile 5	350	265	270	330	265	250
All placed applicants	Quintile 1	120	155	130	160	245	205
	Quintile 2	190	195	180	220	265	300
	Quintile 3	205	225	260	210	285	315
	Quintile 4	265	260	250	275	305	355
	Quintile 5	365	305	320	370	375	385
June deadline applicants per 10,000 population	Quintile 1	76.5	80.0	77.4	80.2	85.1	87.2
	Quintile 2	108.0	110.0	109.9	116.9	109.3	114.7
	Quintile 3	122.6	121.2	130.4	129.4	120.1	122.6
	Quintile 4	136.8	132.9	141.4	137.8	123.4	132.5
	Quintile 5	174.3	167.6	165.8	166.6	142.9	146.4
Placed June deadline applicants per 10,000 population	Quintile 1	8.1	10.0	8.4	10.8	14.2	12.1
	Quintile 2	12.1	11.9	11.3	13.8	13.9	15.8
	Quintile 3	12.9	13.0	15.0	13.0	13.9	15.3
	Quintile 4	16.5	14.8	13.3	16.6	14.4	15.0
	Quintile 5	21.3	15.8	16.3	20.3	15.8	15.2
All placed applicants per 10,000 population	Quintile 1	8.3	11.0	9.5	11.6	17.5	15.3
	Quintile 2	12.6	13.0	12.3	15.0	17.7	20.6
	Quintile 3	13.2	14.4	17.1	13.8	18.4	21.0
	Quintile 4	17.0	16.3	16.0	17.7	19.4	22.9
	Quintile 5	22.0	18.3	19.5	22.6	22.5	23.4

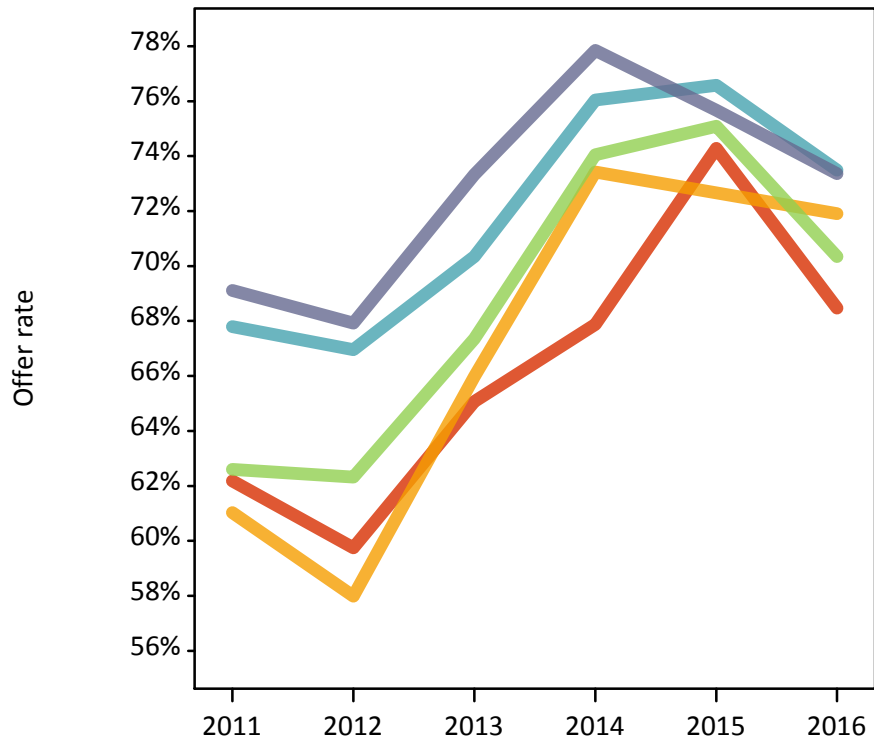
P.8 18 year old applications by POLAR3 quintile

Statistic	POLAR3 quintile	2011	2012	2013	2014	2015	2016
June deadline applications	Quintile 1	1,195	1,235	1,150	1,190	1,260	1,235
	Quintile 2	1,725	1,735	1,695	1,800	1,695	1,735
	Quintile 3	1,960	1,960	2,075	2,015	1,905	1,910
	Quintile 4	2,250	2,195	2,315	2,210	2,010	2,135
	Quintile 5	2,995	2,900	2,835	2,805	2,450	2,475
Offers	Quintile 1	745	740	750	805	935	845
	Quintile 2	1,055	1,005	1,120	1,325	1,230	1,250
	Quintile 3	1,225	1,220	1,395	1,490	1,430	1,345
	Quintile 4	1,525	1,470	1,625	1,680	1,540	1,570
	Quintile 5	2,070	1,970	2,080	2,185	1,855	1,815
Offer rate	Quintile 1	62.2%	59.7%	65.1%	67.9%	74.3%	68.5%
	Quintile 2	61.0%	58.0%	66.0%	73.4%	72.7%	71.9%
	Quintile 3	62.6%	62.3%	67.4%	74.0%	75.1%	70.4%
	Quintile 4	67.8%	67.0%	70.3%	76.0%	76.6%	73.5%
	Quintile 5	69.1%	67.9%	73.3%	77.9%	75.7%	73.4%
Average offer rate	Quintile 1	63.4%	60.4%	65.2%	69.3%	74.3%	68.5%
	Quintile 2	61.6%	59.5%	66.8%	72.9%	73.0%	71.3%
	Quintile 3	63.8%	63.3%	68.0%	74.8%	75.0%	70.6%
	Quintile 4	67.3%	66.7%	70.3%	76.4%	76.7%	74.1%
	Quintile 5	67.9%	66.2%	72.4%	76.8%	75.5%	73.0%
Percentage point difference between offer rate and average offer rate	Quintile 1	-1.3	-0.6	-0.1	-1.5	0.0	-0.0
	Quintile 2	-0.5	-1.5	-0.8	0.6	-0.3	0.6
	Quintile 3	-1.2	-1.0	-0.6	-0.7	0.1	-0.3
	Quintile 4	0.5	0.2	0.0	-0.4	-0.1	-0.7
	Quintile 5	1.2	1.7	0.9	1.1	0.2	0.4
Contribution of group to the average offer rate	Quintile 1	0.214	0.212	0.209	0.213	0.222	0.217
	Quintile 2	0.245	0.244	0.237	0.249	0.261	0.259
	Quintile 3	0.262	0.257	0.263	0.262	0.268	0.268
	Quintile 4	0.286	0.284	0.289	0.282	0.282	0.294
	Quintile 5	0.360	0.364	0.348	0.347	0.338	0.336

P.9 18 year old offer rate by POLAR3 quintile

Note: The line for a group is not plotted when that group made fewer than 10 applications in any of the years from 2011-2016.

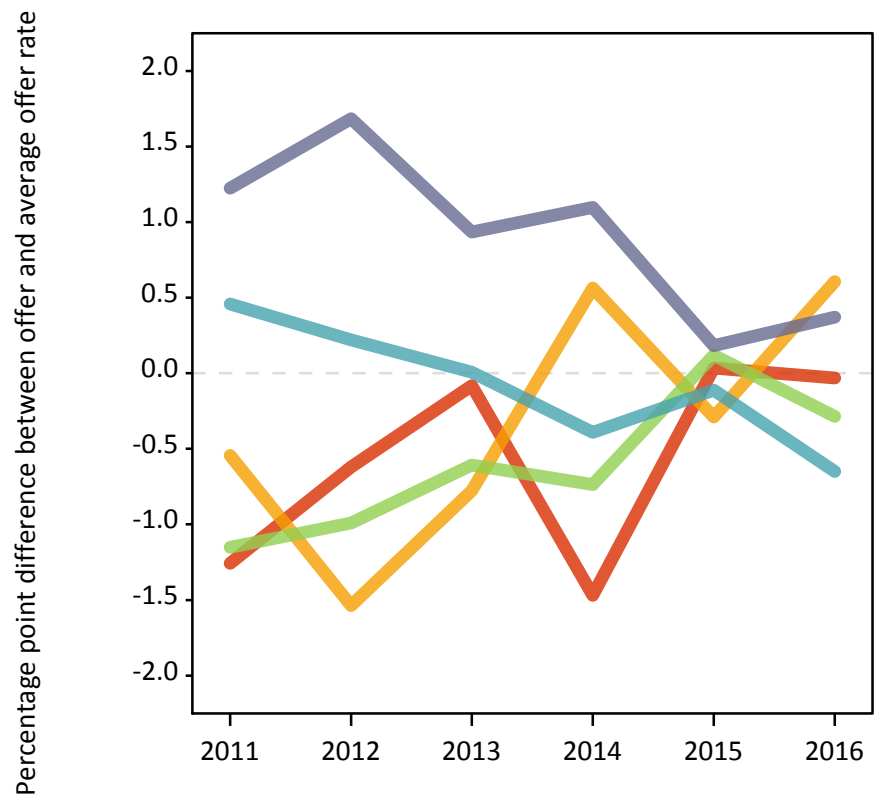
- Quintile 1
- Quintile 2
- Quintile 3
- Quintile 4
- Quintile 5



P.10 Percentage point difference between 18 year old offer rate and average offer rate by POLAR3 quintile

Note: The line for a group is not plotted when that group made fewer than 50 applications in any of the years from 2011-2016.

- Quintile 1
- Quintile 2
- Quintile 3
- Quintile 4
- Quintile 5



P.11 18 year old applicants by ethnic group

Statistic	Ethnic group	2011	2012	2013	2014	2015	2016
June deadline applicants	Asian	1,685	1,495	1,450	1,435	1,430	1,640
	Black	525	410	570	590	555	570
	Mixed	310	315	320	310	345	375
	White	6,975	7,260	7,165	7,140	6,495	6,380
	Other	90	90	105	100	110	140
Placed June deadline applicants	Asian	105	75	95	125	105	165
	Black	35	30	45	40	60	70
	Mixed	30	30	30	30	35	45
	White	920	875	815	925	895	815
	Other	5	5	5	10	10	5
All placed applicants	Asian	110	100	120	145	185	285
	Black	40	40	55	50	90	110
	Mixed	35	40	35	30	55	70
	White	950	950	925	990	1,120	1,075
	Other	5	10	10	10	15	15
June deadline applicants per 10,000 population	Asian	267.7	231.2	219.5	211.9	201.8	227.8
	Black	192.4	145.6	191.3	194.6	174.7	182.5
	Mixed	128.4	120.2	119.1	108.1	112.5	119.5
	White	107.8	112.4	113.9	115.7	104.2	105.5
	Other	113.6	102.8	116.9	109.6	116.2	139.0
Placed June deadline applicants per 10,000 population	Asian	17.0	11.6	14.1	18.3	14.7	23.2
	Black	13.5	11.0	14.8	13.5	18.5	21.7
	Mixed	12.8	12.3	10.7	10.4	11.7	14.0
	White	14.2	13.6	12.9	15.0	14.4	13.5
	Other	8.6	6.8	7.7	9.7	9.3	7.1
All placed applicants per 10,000 population	Asian	17.3	15.1	18.2	21.2	26.0	39.9
	Black	13.9	14.6	18.5	16.8	28.0	35.8
	Mixed	14.0	14.6	12.2	10.8	18.2	21.9
	White	14.7	14.7	14.7	16.0	18.0	17.8
	Other	8.6	11.3	11.0	10.7	13.5	14.1

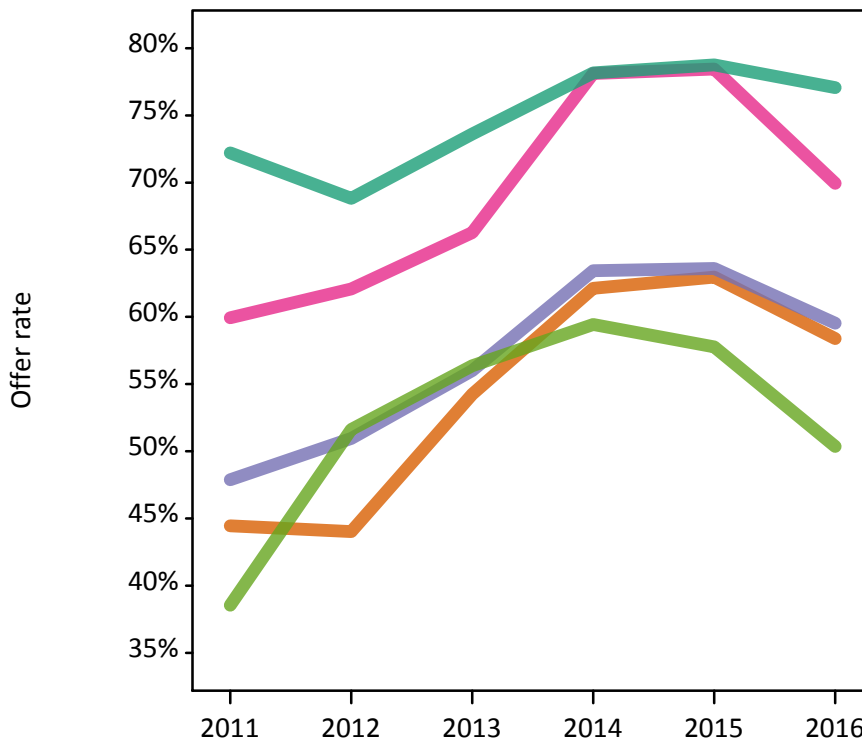
P.12 18 year old applications by ethnic group

Statistic	Ethnic group	2011	2012	2013	2014	2015	2016
June deadline applications	Asian	1,745	1,535	1,490	1,480	1,465	1,705
	Black	540	425	580	600	565	590
	Mixed	320	335	335	320	360	385
	White	7,375	7,630	7,520	7,480	6,760	6,635
	Other	95	95	110	105	115	140
Offers	Asian	775	675	805	920	925	995
	Black	260	215	325	380	360	350
	Mixed	195	210	220	250	285	270
	White	5,325	5,250	5,535	5,845	5,325	5,115
	Other	35	50	60	65	65	70
Offer rate	Asian	44.4%	44.0%	54.2%	62.1%	63.0%	58.4%
	Black	47.9%	50.9%	56.0%	63.4%	63.6%	59.5%
	Mixed	59.9%	62.1%	66.3%	78.1%	78.5%	69.9%
	White	72.2%	68.8%	73.6%	78.2%	78.7%	77.1%
	Other	38.5%	51.6%	56.4%	59.4%	57.8%	50.4%
Average offer rate	Asian	48.7%	48.3%	56.8%	64.8%	64.5%	59.8%
	Black	52.0%	52.5%	59.6%	66.0%	65.1%	60.2%
	Mixed	61.2%	61.0%	69.3%	78.7%	77.6%	70.7%
	White	70.8%	67.9%	72.6%	77.3%	78.3%	76.5%
	Other	44.7%	52.7%	60.7%	62.8%	58.4%	52.8%
Percentage point difference between offer rate and average offer rate	Asian	-4.3	-4.3	-2.5	-2.7	-1.5	-1.4
	Black	-4.2	-1.6	-3.6	-2.6	-1.4	-0.7
	Mixed	-1.2	1.1	-3.0	-0.6	0.8	-0.7
	White	1.4	1.0	1.0	0.8	0.4	0.6
	Other	-6.2	-1.1	-4.4	-3.4	-0.7	-2.4
Contribution of group to the average offer rate	Asian	0.347	0.342	0.312	0.272	0.301	0.331
	Black	0.164	0.154	0.159	0.151	0.160	0.161
	Mixed	0.109	0.126	0.122	0.119	0.122	0.113
	White	0.790	0.815	0.799	0.792	0.779	0.765
	Other	0.073	0.060	0.076	0.119	0.126	0.101

P.13 18 year old offer rate by ethnic group

Note: The line for a group is not plotted when that group made fewer than 10 applications in any of the years from 2011-2016.

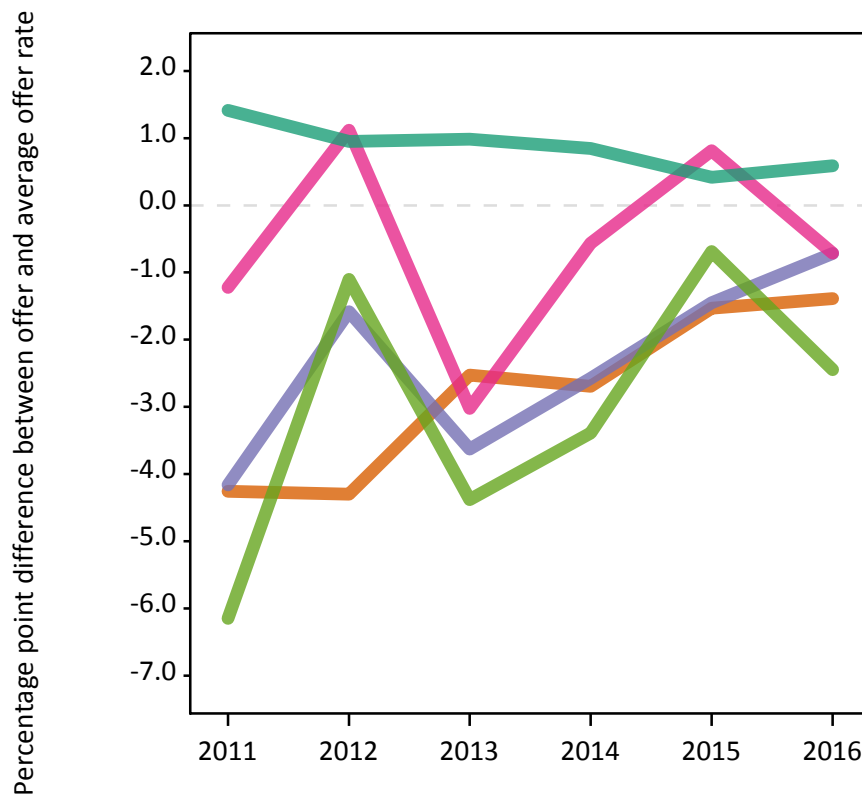
- Asian
- Black
- Mixed
- White
- Other



P.14 Percentage point difference between 18 year old offer rate and average offer rate by ethnic group

Note: The line for a group is not plotted when that group made fewer than 50 applications in any of the years from 2011-2016.

- Asian
- Black
- Mixed
- White
- Other



P.15 Applicants (all ages)

Statistic	2011	2012	2013	2014	2015	2016
June deadline applicants	16,195	15,265	15,580	15,695	15,220	15,005
Placed June deadline applicants	1,805	1,555	1,580	1,845	1,870	1,765
All placed applicants	1,885	1,805	1,855	2,035	2,445	2,515

P.16 Applications (all ages)

Statistic	2011	2012	2013	2014	2015	2016
June deadline applications	17,140	16,125	16,360	16,465	15,895	15,660
Offers	9,280	8,350	9,390	10,435	10,000	9,525
Offer rate	54.2%	51.8%	57.4%	63.4%	62.9%	60.8%

P.17 Applicants (all ages) by sex

Statistic	Sex	2011	2012	2013	2014	2015	2016
June deadline applicants	Men	7,205	6,325	6,310	6,545	6,185	5,860
	Women	8,990	8,940	9,270	9,150	9,035	9,150
Placed June deadline applicants	Men	795	645	655	785	805	745
	Women	1,010	905	925	1,060	1,065	1,020
All placed applicants	Men	820	755	790	870	1,090	1,125
	Women	1,065	1,050	1,065	1,170	1,355	1,390

P.18 Applications (all ages) by sex

Statistic	Sex	2011	2012	2013	2014	2015	2016
June deadline applications	Men	7,650	6,715	6,615	6,880	6,485	6,120
	Women	9,485	9,410	9,745	9,580	9,410	9,535
Offers	Men	4,435	3,755	4,290	4,855	4,610	4,225
	Women	4,845	4,590	5,095	5,580	5,390	5,300
Offer rate	Men	57.9%	55.9%	64.9%	70.6%	71.1%	69.0%
	Women	51.1%	48.8%	52.3%	58.2%	57.3%	55.6%

P.19 Applicants (all ages) by POLAR3 quintile

Statistic	POLAR3 quintile	2011	2012	2013	2014	2015	2016
June deadline applicants	Quintile 1	2,145	2,125	2,050	2,145	2,225	2,180
	Quintile 2	2,850	2,785	2,765	2,890	2,785	2,765
	Quintile 3	3,170	2,980	3,215	3,170	3,150	3,045
	Quintile 4	3,510	3,255	3,445	3,335	3,175	3,175
	Quintile 5	4,490	4,085	4,085	4,130	3,855	3,790
Placed June deadline applicants	Quintile 1	225	240	215	270	320	285
	Quintile 2	305	275	265	335	335	340
	Quintile 3	320	295	345	335	350	365
	Quintile 4	425	345	340	405	400	350
	Quintile 5	520	395	415	500	465	415
All placed applicants	Quintile 1	235	270	240	295	395	370
	Quintile 2	325	320	305	370	430	465
	Quintile 3	340	355	395	365	455	505
	Quintile 4	440	395	405	445	520	540
	Quintile 5	540	460	505	560	640	635

P.20 Applications (all ages) by POLAR3 quintile

Statistic	POLAR3 quintile	2011	2012	2013	2014	2015	2016
June deadline applications	Quintile 1	2,330	2,350	2,220	2,315	2,350	2,315
	Quintile 2	3,035	2,945	2,915	3,050	2,925	2,900
	Quintile 3	3,340	3,150	3,365	3,310	3,275	3,165
	Quintile 4	3,725	3,415	3,605	3,490	3,335	3,320
	Quintile 5	4,675	4,225	4,235	4,275	3,980	3,895
Offers	Quintile 1	1,115	1,035	1,080	1,220	1,370	1,250
	Quintile 2	1,525	1,370	1,530	1,850	1,760	1,720
	Quintile 3	1,740	1,585	1,890	2,085	2,045	1,915
	Quintile 4	2,140	1,900	2,175	2,300	2,170	2,110
	Quintile 5	2,750	2,435	2,705	2,970	2,635	2,500
Offer rate	Quintile 1	47.8%	44.1%	48.7%	52.6%	58.2%	53.9%
	Quintile 2	50.2%	46.6%	52.5%	60.7%	60.1%	59.3%
	Quintile 3	52.1%	50.3%	56.1%	63.0%	62.5%	60.5%
	Quintile 4	57.4%	55.6%	60.3%	65.9%	65.1%	63.5%
	Quintile 5	58.8%	57.7%	63.8%	69.5%	66.3%	64.1%

P.21 Applicants (all ages) by ethnic group

Statistic	Ethnic group	2011	2012	2013	2014	2015	2016
June deadline applicants	Asian	3,075	2,635	2,590	2,590	2,695	2,865
	Black	1,255	1,105	1,175	1,210	1,255	1,275
	Mixed	515	490	545	550	575	605
	White	11,025	10,730	10,945	11,020	10,310	9,855
	Other	185	220	205	225	245	260
Placed June deadline applicants	Asian	190	130	160	225	230	270
	Black	75	70	70	85	100	115
	Mixed	50	55	50	50	60	65
	White	1,465	1,285	1,280	1,455	1,445	1,280
	Other	10	10	10	20	20	20
All placed applicants	Asian	195	180	225	270	370	470
	Black	80	95	90	105	150	195
	Mixed	55	65	55	55	85	100
	White	1,530	1,435	1,450	1,575	1,785	1,695
	Other	15	15	15	20	30	35

P.22 Applications (all ages) by ethnic group

Statistic	Ethnic group	2011	2012	2013	2014	2015	2016
June deadline applications	Asian	3,210	2,735	2,680	2,675	2,785	2,985
	Black	1,295	1,155	1,200	1,240	1,280	1,310
	Mixed	540	520	565	565	600	630
	White	11,755	11,400	11,580	11,650	10,830	10,320
	Other	190	225	215	230	255	265
Offers	Asian	1,220	995	1,195	1,425	1,515	1,540
	Black	475	370	475	595	585	565
	Mixed	270	285	330	375	410	380
	White	7,195	6,590	7,240	7,885	7,285	6,840
	Other	55	70	95	110	120	115
Offer rate	Asian	38.0%	36.4%	44.6%	53.3%	54.4%	51.5%
	Black	36.8%	32.0%	39.7%	48.0%	45.9%	43.3%
	Mixed	50.2%	55.1%	58.0%	66.0%	68.3%	60.0%
	White	61.2%	57.8%	62.5%	67.7%	67.3%	66.3%
	Other	30.2%	32.1%	43.5%	46.8%	46.5%	44.2%

Technical Notes and Definitions

UCAS undergraduate scheme

Adjustment

Adjustment allows applicants who have met and exceeded the terms of their conditional firm offer to seek and find a place at another provider whilst keeping their place at their original firm choice provider.

Clearing

Clearing is a route for applicants that are not placed and holding no offers to find a place on courses with vacancies.

Cycle year

The UCAS application cycle which runs from September to October the following year. For example the 2016 cycle runs from September 2015 through to October 2016.

End of cycle

The point in the cycle to which the numbers in this report refer, and the point at which the cycle is closed such that no more applications or offers can be made, and no more applicants can be placed. Numbers reported at the end of cycle exclude information on a small number of applicants who cancelled during the cycle.

Extra

Applicants who are unsuccessful in obtaining an offer or decline all offers may be eligible to apply through Extra, where they can apply to one further course at a time. Extra operates from 25 February until early July. It provides applicants who are eligible the possibility of obtaining an offer before exam results are published and Clearing starts.

June 30 deadline

The deadline for main scheme applications. Applicants who apply after this date will go directly into Clearing.

Record of Prior Acceptance (RPA)

RPA is an acceptance route used when a provider informs UCAS of applicants it has accepted outside of the normal application process (e.g. individuals who have applied directly to the provider).

Reporting groups

Ethnic group

High level grouping of ethnic origin as declared by the applicant: 'White', 'Black', 'Asian', 'Mixed', 'Other', 'Unknown'. Applicants who declare themselves as 'Unknown' ethnic origin are not reported in these tables, but are included in the associated csv data file.

POLAR3 quintile

Developed by HEFCE, POLAR3 classifies small areas across the UK into five groups according to their level of young participation in Higher Education. Each of these groups represents around 20 per cent of young people and is ranked from Quintile 1 (areas with the lowest young participation rates, considered as the most disadvantaged) to Quintile 5 (highest young participation rates, considered most advantaged). POLAR3 is based on the participation rates of young people between 2005 and 2009 who entered Higher Education between 2005-06 and 2010-11, therefore is most suitable for applicants aged 19 and under. These groups are assigned using the postcode declared by the applicant at the time of their application. If a UK postcode is invalid, considered unsafe for measurement or there is no link to Census geography possible then the applicant is not assigned to a quintile. Applicants with no POLAR3 quintile are not reported.

Sex

Sex as declared by the applicant.

SIMD quintile

Scottish index of multiple deprivation (SIMD) for 2012 identifies small area concentrations of multiple deprivation across all of Scotland, providing a relative measure of deprivation amongst 6505 small areas (data zones) based on 7 socio-economic domains. These small areas are classified into five groups ranked from Quintile 1 (considered the most deprived) to Quintile 5 (considered least deprived), with equal populations in each quintile. Quintiles are assigned using the postcode declared by the applicant, applicants declaring invalid postcodes are classified as 'Not assigned' and are not reported.

SIMD is only defined for applicants domiciled in Scotland, therefore any applicants domiciled outside of Scotland cannot be assigned to an SIMD quintile and so are not reported for this measure.

SIMD is only reported for providers in Scotland. Application and entry rates by SIMD are reported in the 2016 End of Cycle Report and the 2016 cycle January deadline application rate report.

Statistics reported in the tables

All placed applicants

The number of applicants placed for entry into higher education at the provider through one of their choices, including any choices made through Extra, or via Adjustment, Clearing or RPA.

All placed applicants per 10,000 population

The number of total UK domiciled 18 year old placed applicants for entry into higher education at the provider divided by the number of UK 18 year olds in the population, multiplied by 10,000. This gives the number of 18 year olds, for every 10,000 in the population, that were placed at the provider through one of their choices, including any choices made through Extra, or via Adjustment, Clearing or RPA. It is an alternative way of expressing the entry rate to a provider. By referencing the underlying population this statistic shows how the number of placed applicants is changing in relation to the available pool of potential applicants and so gives the chance that somebody from the group will be placed at a provider.

This statistic is only reported for 18 year olds.

Average offer rate

The offer rate that you might expect if the predicted grades and subject choice of applicants were the only factors that influenced whether an applicant was made an offer by the provider. The average offer rate is calculated by dividing applicants according to their specific combination of grades (for A levels the best three predicted grades are used, for BTECs, International Baccalaureate and Scottish Highers and Advanced Highers, predicted grades along with any grades already achieved upon applying are used) and subject choice. For each combination the number of main scheme offers is divided by the number of main scheme applications, to give an overall offer rate. This is then multiplied by the number of applications made by the group for which the average offer rate is being calculated (for example POLAR3 quintile 1), to give an average number of offers for that group. These average number of offers are then added together across all combinations of predicted grade and subject and divided by the number of main scheme applications from the group to give the average offer rate.

The average offer rate does not attempt to control for any other factors that may play a part in the decision to make an offer, such as the subject of the qualifications studied, their relevance to a course, or the grade in each subject; higher numbers of A levels being studied; the exact profile of grades predicted; personal statements; teacher references; interviews; or any other criteria (such as work experience or portfolios) that may be part of the admissions decision.

This statistic is only reported for 18 year olds.

Contribution of group to the average offer rate

The way in which the average offer rate is defined means that the pattern of application and offers of a group (for example POLAR3 quintile 1) will always contribute, in part, to the average offer rate for that group. When this contribution is large, the average offer rate will mainly reflect the patterns for the group, meaning that the value of the average offer rate will be similar to the offer rate, the percentage point difference statistic will be small, and any real difference between the offer rate and what might be expected given the predicted grades and subject choices of the applicants will be difficult to detect.

Values of the contribution of group to the average offer rate range between 0 and 1. The closer the value is to 1 the greater the contribution a group makes to its own average offer rate.

This statistic is only reported for 18 year olds.

Placed June deadline applicants

An applicant who has been placed for entry into higher education at the provider through a June deadline application.

Placed June deadline applicants per 10,000 population

The number of UK domiciled 18 year old placed June deadline applicants at the provider divided by the number of UK 18 year olds in the population, multiplied by 10,000. This gives the number of 18 year olds, for every 10,000 in the population, that were placed at the provider through one of their June deadline applications. It is an alternative way of expressing the entry rate to a provider, but for placed June deadline applicants only. By referencing the underlying population this statistic shows how the number of placed June deadline applicants is changing in relation to the available pool of potential 18 year old applicants and so gives the chance that somebody from the group will be placed at a provider through a June deadline application.

This statistic is only reported for 18 year olds.

June deadline applications

An application (or choice) to a course in higher education to the provider that is made by the June 30 deadline. Each applicant can make up to five choices this way. The number of June deadline applications does not include choices made through the following routes: Clearing, Extra, Adjustment and RPAs. Applications made to October deadline courses received after the October deadline are not included in these statistics.

June deadline applicants

The number of applicants that made at least one application to the provider by the June 30 deadline.

June deadline applicants per 10,000 population

The number of UK domiciled 18 year old June deadline applicants to the provider divided by the number of UK 18 year olds in the population, multiplied by 10,000. This gives the number of 18 year olds, for every 10,000 in the population, who applied by the June 30 deadline. It is equivalent to the application rate. By referencing the underlying population this statistic shows how the number of June deadline applicants is changing in relation to the available pool of potential 18 year old applicants and so gives the chance that somebody from the group will apply to a provider by the June 30 deadline.

This statistic is only reported for 18 year olds.

Offers

An offer is defined as a provider's decision in response to an application to offer a place to an applicant, often subject to the applicant satisfying academic and/or other criteria, via a June deadline application (i.e. does not cover choices made through the following routes: Clearing, Extra, Adjustment and RPAs).

Offer rate

The number of offers made divided by the number of June deadline applications. This gives the proportion of all June deadline applications to the provider that received an offer.

Percentage point difference between offer rate and average offer rate

The offer rate minus the average offer rate.

The percentage point difference can be compared to the expected range of statistical variation resulting from the calculation of the average offer rate using the Average Offer Rate Lookup Table. Where the value of the percentage point difference lies outside of this range, the percentage point difference may be considered to represent a real difference between the offer rate and the average offer rate.

Other definitions

Age

This analysis uses country-specific age definitions that align with the cut off points for school and college cohorts within the different administrations of the UK. For England and Wales, ages are defined on the 31 August, for Northern Ireland on the 1 July and for Scotland on the 28 February the following year. Defining ages in this way matches the assignment of children to school cohorts. For applicants outside of the UK a cohort cut off of 31 August has been used.

Provider

A higher education provider - a university or college.

UK domiciled

Declared area of permanent residence within England, Northern Ireland, Scotland and Wales. Applicants from the Channel Islands and Isle of Man are not included.