

K60 Kings College London (University of London)

Cycle years: 2011 - 2016

Cycle Reference Point: End of Cycle

Applicant coverage: UK domiciled

Reporting groups: Sex, POLAR3, ethnic group

Applicant statistics: June deadline applicants, placed June deadline applicants, all placed applicants, June deadline applicants per 10,000 population, placed June deadline applicants per 10,000 population, all placed applicants per 10,000 population

Application statistics: June deadline applications, offers, offer rate, average offer rate, percentage point difference between offer rate and average offer rate, contribution of group to the average offer rate

Non-disclosure controls: To avoid the disclosure of information about any individual the following measures are taken

- Applicants, placed applicants, applications and offers are rounded to the nearest 5.
- Applicants/placed applicants per 10,000 population figures are reported as 0 if the applicant/placed applicant figures are rounded to 0.
- All statistics related to the offer rate are not reported when the number of applications for a group is less than 10. The percentage point difference between the offer rate and the average offer rate is not reported when the number of applications for a group is less than 50.
- Offer rates are reported as 0% if there are fewer than 5 offers, and 100% if the number of offers is within 5 of the number of applications. When the offer rate is reported as 0% or 100%, it is reported in italics.

Contents:

18 year old applicants:	P.1
18 year old applications:	P.2
18 year old applicants by sex:	P.3
18 year old applications by sex:	P.4
18 year old applicants by POLAR3 quintile:	P.7
18 year old applications by POLAR3 quintile:	P.8
18 year old applicants by ethnic group:	P.11
18 year old applications by ethnic group:	P.12
Applicants (all ages):	P.15
Applications (all ages):	P.16
Applicants (all ages) by sex:	P.17
Applications (all ages) by sex:	P.18
Applicants (all ages) by POLAR3 quintile:	P.19
Applications (all ages) by POLAR3 quintile:	P.20
Applicants (all ages) by ethnic group:	P.21
Applications (all ages) by ethnic group:	P.22

P.1 18 year old applicants

Statistic	2011	2012	2013	2014	2015	2016
June deadline applicants	11,185	9,175	9,775	10,885	12,145	11,735
Placed June deadline applicants	1,510	1,605	1,565	1,720	1,725	1,785
All placed applicants	1,575	1,685	1,690	1,840	1,885	1,960
June deadline applicants per 10,000 population	145.3	118.6	128.4	144.5	158.5	156.5
Placed June deadline applicants per 10,000	19.6	20.8	20.6	22.8	22.5	23.8
All placed applicants per 10,000 population	20.4	21.8	22.2	24.5	24.6	26.2

P.2 18 year old applications

Statistic	2011	2012	2013	2014	2015	2016
June deadline applications	11,645	9,545	10,145	11,295	12,495	12,185
Offers	5,020	5,410	6,130	7,130	8,330	8,075
Offer rate	43.1%	56.7%	60.4%	63.1%	66.7%	66.3%

P.3 18 year old applicants by sex

Statistic	Sex	2011	2012	2013	2014	2015	2016
June deadline applicants	Men	4,395	3,695	3,775	4,235	4,475	4,355
	Women	6,790	5,480	6,000	6,650	7,675	7,375
Placed June deadline applicants	Men	615	640	600	645	615	615
	Women	895	965	965	1,075	1,110	1,170
All placed applicants	Men	640	670	645	695	680	685
	Women	930	1,010	1,045	1,150	1,205	1,275
June deadline applicants per 10,000 population	Men	111.7	93.1	96.6	109.4	114.0	113.4
	Women	180.4	145.4	161.9	181.7	205.3	201.9
Placed June deadline applicants per 10,000 population	Men	15.6	16.1	15.4	16.7	15.7	16.0
	Women	23.8	25.7	26.0	29.3	29.8	32.0
All placed applicants per 10,000 population	Men	16.3	16.9	16.5	17.9	17.4	17.8
	Women	24.7	26.8	28.2	31.4	32.2	34.9

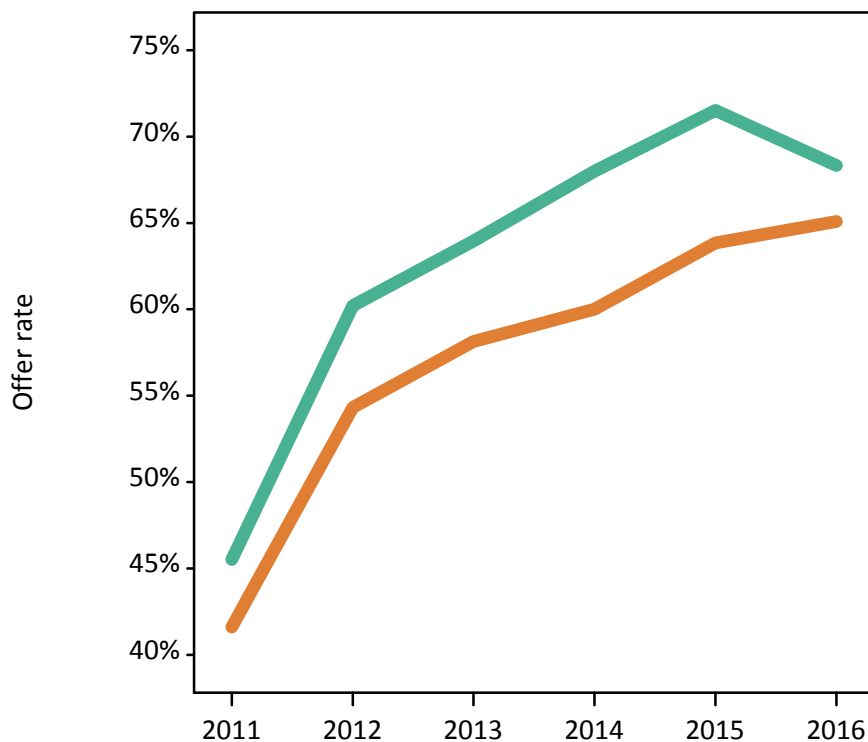
P.4 18 year old applications by sex

Statistic	Sex	2011	2012	2013	2014	2015	2016
June deadline applications	Men	4,555	3,835	3,930	4,395	4,615	4,505
	Women	7,090	5,710	6,220	6,900	7,880	7,680
Offers	Men	2,075	2,310	2,510	2,990	3,300	3,080
	Women	2,950	3,100	3,615	4,140	5,030	5,000
Offer rate	Men	45.5%	60.2%	64.0%	68.0%	71.5%	68.3%
	Women	41.6%	54.3%	58.1%	60.0%	63.8%	65.1%
Average offer rate	Men	45.8%	60.7%	64.2%	67.8%	72.3%	68.4%
	Women	41.4%	54.0%	58.0%	60.1%	63.4%	65.0%
Percentage point difference between offer rate and average offer rate	Men	-0.3	-0.5	-0.3	0.1	-0.7	-0.1
	Women	0.2	0.3	0.2	-0.1	0.4	0.0
Contribution of group to the average offer rate	Men	0.480	0.502	0.499	0.514	0.513	0.503
	Women	0.666	0.665	0.684	0.690	0.715	0.708

P.5 18 year old offer rate by sex

Note: The line for a group is not plotted when that group made fewer than 10 applications in any of the years from 2011-2016.

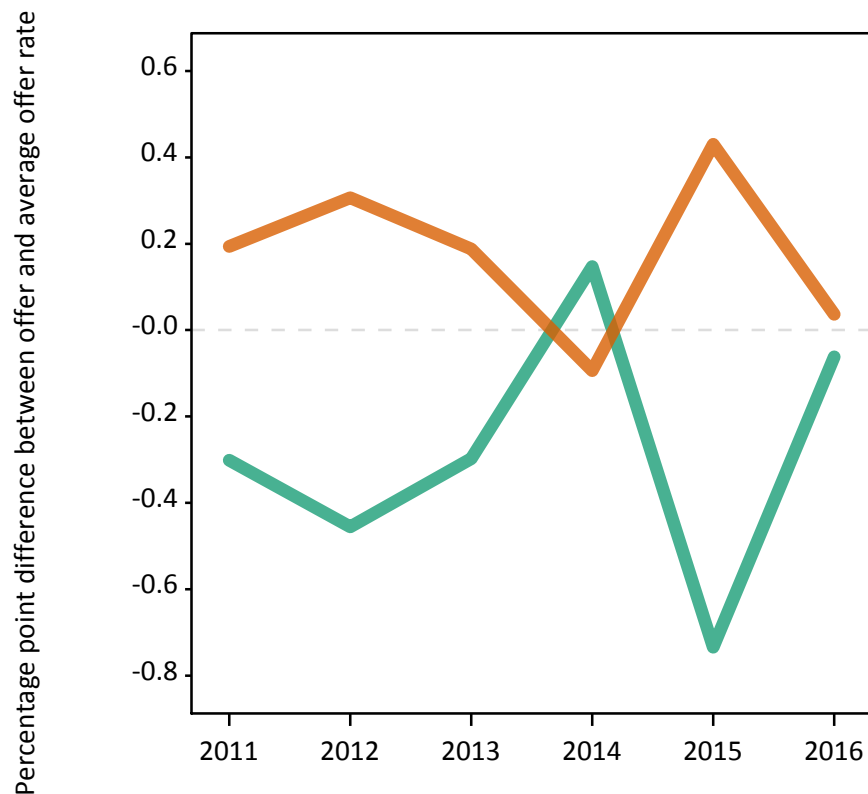
Men
Women



P.6 Percentage point difference between 18 year old offer rate and average offer rate by sex

Note: The line for a group is not plotted when that group made fewer than 50 applications in any of the years from 2011-2016.

Men
Women



P.7 18 year old applicants by POLAR3 quintile

Statistic	POLAR3 quintile	2011	2012	2013	2014	2015	2016
June deadline applicants	Quintile 1	520	440	475	600	675	595
	Quintile 2	1,030	830	955	1,125	1,275	1,205
	Quintile 3	1,965	1,650	1,820	2,090	2,375	2,340
	Quintile 4	2,780	2,320	2,420	2,720	3,035	2,890
	Quintile 5	4,865	3,895	4,075	4,320	4,735	4,630
Placed June deadline applicants	Quintile 1	70	60	55	85	90	90
	Quintile 2	125	135	130	165	170	160
	Quintile 3	240	255	265	315	305	315
	Quintile 4	390	395	385	435	455	425
	Quintile 5	690	750	720	715	700	785
All placed applicants	Quintile 1	70	65	60	90	95	95
	Quintile 2	130	140	140	175	190	175
	Quintile 3	250	270	285	345	335	345
	Quintile 4	400	410	410	455	485	465
	Quintile 5	720	785	785	775	775	875
June deadline applicants per 10,000 population	Quintile 1	36.2	30.7	33.9	43.3	48.2	44.2
	Quintile 2	68.4	55.4	64.7	77.0	86.0	83.2
	Quintile 3	127.6	107.0	119.3	138.8	154.7	155.5
	Quintile 4	177.5	146.3	154.8	176.5	193.9	187.3
	Quintile 5	294.0	231.8	246.6	265.0	282.9	280.4
Placed June deadline applicants per 10,000 population	Quintile 1	4.9	4.2	4.0	6.1	6.4	6.8
	Quintile 2	8.2	8.9	9.0	11.3	11.6	11.0
	Quintile 3	15.5	16.6	17.5	21.0	19.8	20.9
	Quintile 4	24.8	24.8	24.6	28.2	29.2	27.6
	Quintile 5	41.7	44.6	43.6	43.9	41.8	47.5
All placed applicants per 10,000 population	Quintile 1	5.0	4.6	4.3	6.3	6.9	7.1
	Quintile 2	8.7	9.3	9.6	11.9	12.7	12.0
	Quintile 3	16.1	17.5	18.7	22.8	21.7	22.8
	Quintile 4	25.5	25.8	26.3	29.6	31.0	30.0
	Quintile 5	43.6	46.8	47.5	47.6	46.4	53.0

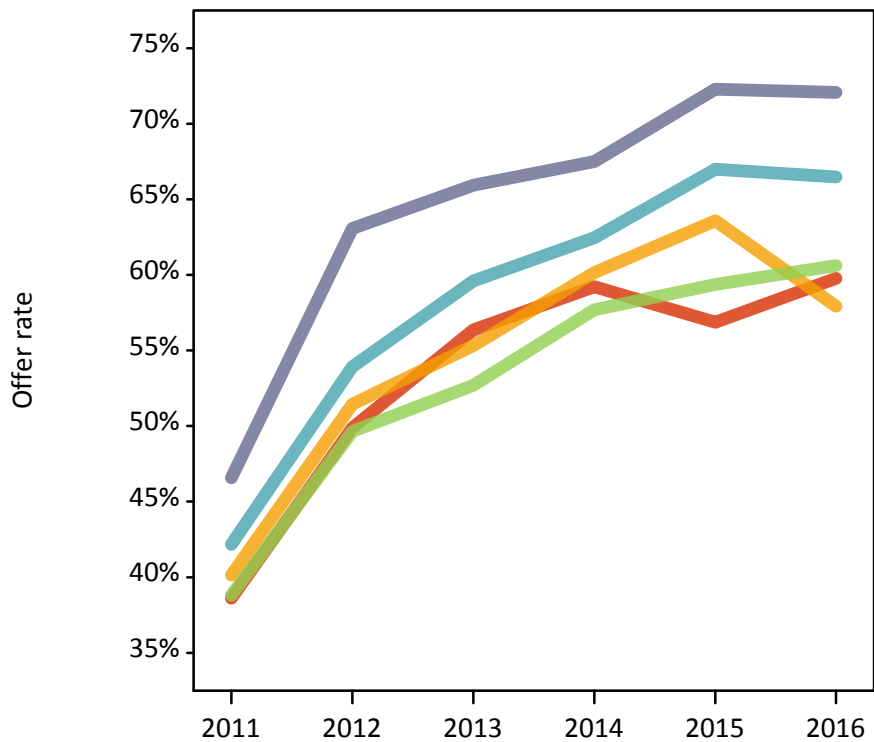
P.8 18 year old applications by POLAR3 quintile

Statistic	POLAR3 quintile	2011	2012	2013	2014	2015	2016
June deadline applications	Quintile 1	530	450	490	620	690	610
	Quintile 2	1,070	865	980	1,155	1,305	1,250
	Quintile 3	2,050	1,705	1,885	2,180	2,430	2,425
	Quintile 4	2,900	2,420	2,520	2,825	3,130	3,000
	Quintile 5	5,065	4,065	4,250	4,490	4,890	4,825
Offers	Quintile 1	205	225	275	365	395	365
	Quintile 2	430	445	540	695	830	725
	Quintile 3	795	845	995	1,255	1,440	1,470
	Quintile 4	1,225	1,305	1,500	1,765	2,095	1,995
	Quintile 5	2,360	2,565	2,800	3,030	3,535	3,480
Offer rate	Quintile 1	38.6%	49.9%	56.4%	59.2%	56.9%	59.8%
	Quintile 2	40.1%	51.4%	55.3%	60.2%	63.6%	57.9%
	Quintile 3	38.8%	49.6%	52.7%	57.7%	59.4%	60.6%
	Quintile 4	42.2%	53.9%	59.6%	62.5%	67.0%	66.5%
	Quintile 5	46.6%	63.1%	65.9%	67.5%	72.3%	72.1%
Average offer rate	Quintile 1	39.5%	53.3%	57.0%	59.9%	58.7%	57.9%
	Quintile 2	41.8%	53.6%	57.7%	60.1%	63.1%	61.0%
	Quintile 3	39.0%	51.5%	54.3%	58.7%	61.4%	61.5%
	Quintile 4	42.6%	54.9%	58.7%	62.6%	66.8%	66.9%
	Quintile 5	45.8%	60.9%	65.2%	66.8%	71.3%	70.8%
Percentage point difference between offer rate and average offer rate	Quintile 1	-0.9	-3.4	-0.6	-0.7	-1.8	1.9
	Quintile 2	-1.6	-2.1	-2.4	0.0	0.5	-3.0
	Quintile 3	-0.2	-1.9	-1.6	-1.1	-2.0	-0.9
	Quintile 4	-0.4	-1.0	0.9	-0.2	0.2	-0.4
	Quintile 5	0.7	2.2	0.8	0.7	1.0	1.2
Contribution of group to the average offer rate	Quintile 1	0.095	0.107	0.114	0.109	0.112	0.112
	Quintile 2	0.143	0.157	0.153	0.154	0.160	0.150
	Quintile 3	0.229	0.238	0.243	0.246	0.247	0.253
	Quintile 4	0.286	0.297	0.289	0.292	0.289	0.285
	Quintile 5	0.476	0.478	0.473	0.452	0.450	0.454

P.9 18 year old offer rate by POLAR3 quintile

Note: The line for a group is not plotted when that group made fewer than 10 applications in any of the years from 2011-2016.

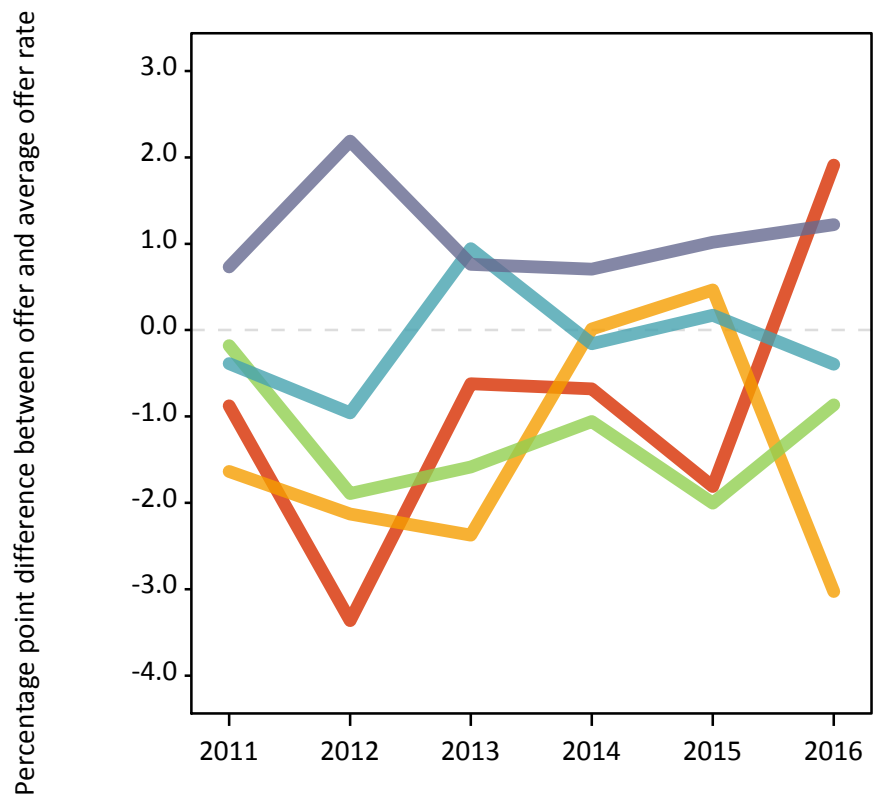
- Quintile 1
- Quintile 2
- Quintile 3
- Quintile 4
- Quintile 5



P.10 Percentage point difference between 18 year old offer rate and average offer rate by POLAR3 quintile

Note: The line for a group is not plotted when that group made fewer than 50 applications in any of the years from 2011-2016.

- Quintile 1
- Quintile 2
- Quintile 3
- Quintile 4
- Quintile 5



P.11 18 year old applicants by ethnic group

Statistic	Ethnic group	2011	2012	2013	2014	2015	2016
June deadline applicants	Asian	3,150	2,675	2,805	3,045	3,365	3,590
	Black	795	665	770	860	930	985
	Mixed	625	540	555	645	760	735
	White	6,140	4,845	5,170	5,815	6,465	5,830
	Other	335	335	355	410	470	455
Placed June deadline applicants	Asian	410	435	405	440	490	550
	Black	70	65	60	75	80	95
	Mixed	85	100	95	115	110	135
	White	895	935	945	1,020	965	935
	Other	40	55	40	55	65	60
All placed applicants	Asian	435	465	445	490	565	615
	Black	75	70	65	90	85	110
	Mixed	85	105	105	120	125	150
	White	920	970	1,010	1,070	1,020	1,010
	Other	40	55	45	60	75	60
June deadline applicants per 10,000 population	Asian	500.1	413.1	425.1	449.3	475.3	498.7
	Black	291.1	235.4	259.3	284.4	292.5	315.4
	Mixed	258.5	207.3	205.6	224.9	246.8	233.6
	White	94.8	75.0	82.2	94.2	103.7	96.3
	Other	414.8	379.7	393.7	442.6	487.6	456.3
Placed June deadline applicants per 10,000 population	Asian	65.2	66.9	61.1	64.6	69.4	76.3
	Black	26.3	22.7	19.9	25.4	24.8	30.0
	Mixed	34.3	38.0	35.1	40.3	36.3	42.3
	White	13.8	14.5	15.0	16.5	15.5	15.5
	Other	46.9	59.9	43.0	59.1	67.4	60.4
All placed applicants per 10,000 population	Asian	69.2	71.6	67.5	72.4	79.7	85.5
	Black	27.1	24.9	21.2	29.0	27.0	35.5
	Mixed	35.5	39.5	38.1	41.7	40.5	47.4
	White	14.2	15.0	16.1	17.3	16.3	16.7
	Other	50.6	61.0	47.4	64.5	77.8	60.4

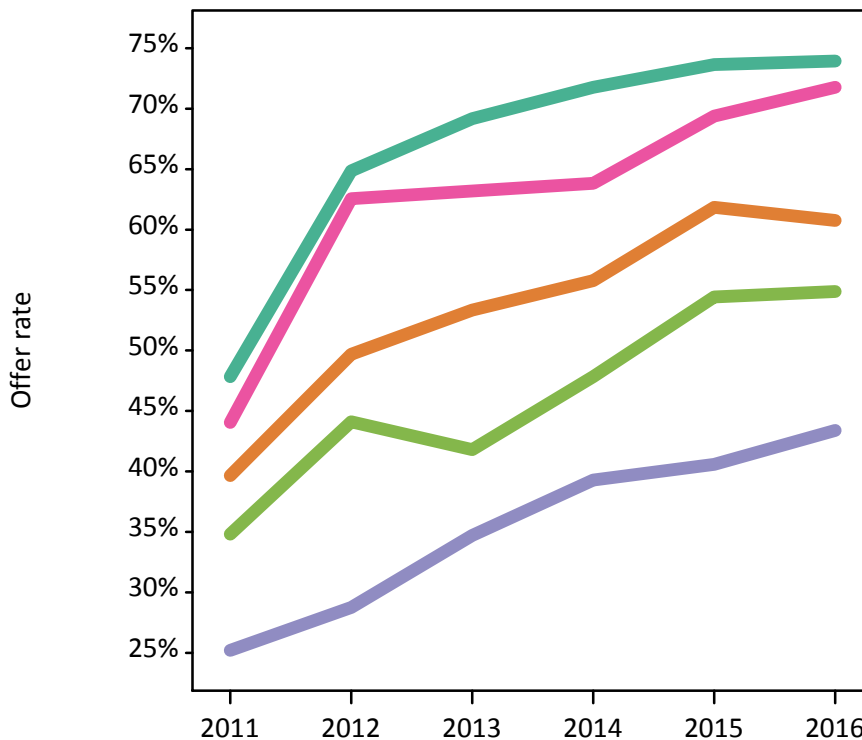
P.12 18 year old applications by ethnic group

Statistic	Ethnic group	2011	2012	2013	2014	2015	2016
June deadline applications	Asian	3,375	2,870	2,995	3,215	3,495	3,785
	Black	830	690	800	890	950	1,020
	Mixed	645	560	575	670	785	765
	White	6,290	4,950	5,270	5,965	6,600	5,980
	Other	360	355	380	440	495	480
Offers	Asian	1,340	1,425	1,600	1,795	2,160	2,300
	Black	210	200	280	350	385	445
	Mixed	285	350	365	430	545	550
	White	3,010	3,210	3,645	4,280	4,865	4,420
	Other	125	155	160	210	270	265
Offer rate	Asian	39.7%	49.7%	53.4%	55.8%	61.8%	60.8%
	Black	25.2%	28.7%	34.7%	39.3%	40.6%	43.4%
	Mixed	44.0%	62.5%	63.2%	63.8%	69.4%	71.8%
	White	47.8%	64.8%	69.2%	71.8%	73.7%	73.9%
	Other	34.8%	44.1%	41.8%	47.8%	54.4%	54.9%
Average offer rate	Asian	40.5%	50.3%	54.5%	57.1%	63.2%	62.1%
	Black	29.2%	32.4%	38.4%	43.3%	45.7%	49.2%
	Mixed	43.3%	61.3%	61.9%	65.7%	69.2%	69.3%
	White	46.9%	63.8%	67.8%	69.7%	71.9%	72.0%
	Other	35.9%	49.5%	46.2%	53.2%	57.2%	59.8%
Percentage point difference between offer rate and average offer rate	Asian	-0.8	-0.7	-1.2	-1.4	-1.4	-1.4
	Black	-3.9	-3.7	-3.7	-4.0	-5.1	-5.8
	Mixed	0.8	1.2	1.3	-1.9	0.2	2.5
	White	1.0	1.1	1.4	2.0	1.8	2.0
	Other	-1.1	-5.4	-4.4	-5.4	-2.7	-4.9
Contribution of group to the average offer rate	Asian	0.441	0.440	0.428	0.413	0.395	0.415
	Black	0.167	0.199	0.194	0.176	0.170	0.170
	Mixed	0.114	0.123	0.114	0.134	0.121	0.123
	White	0.652	0.627	0.630	0.628	0.620	0.584
	Other	0.085	0.105	0.110	0.108	0.101	0.096

P.13 18 year old offer rate by ethnic group

Note: The line for a group is not plotted when that group made fewer than 10 applications in any of the years from 2011-2016.

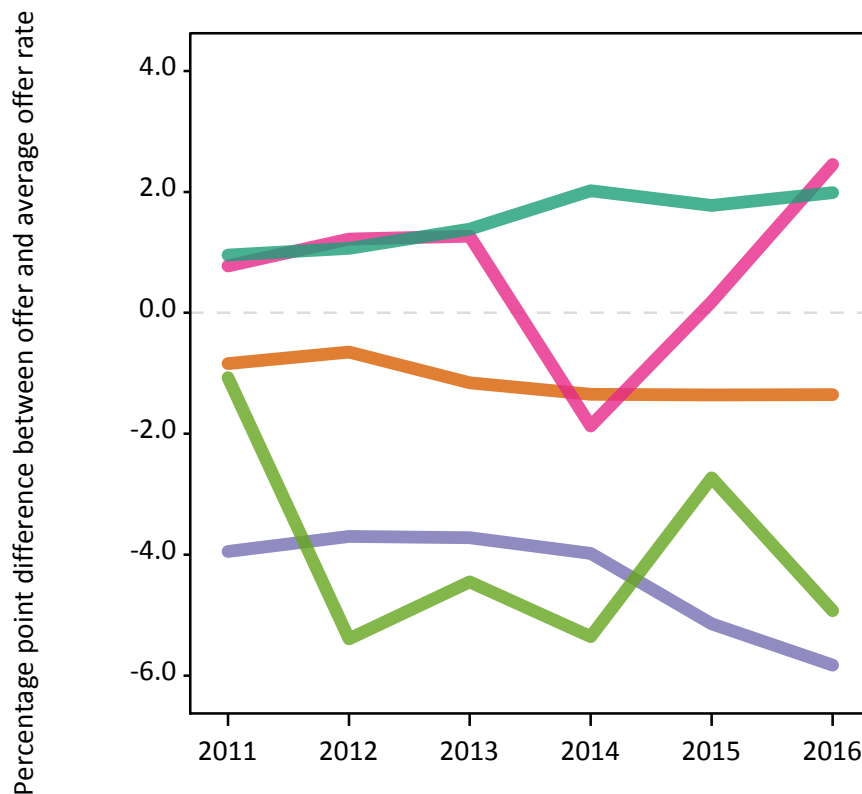
- Asian
- Black
- Mixed
- White
- Other



P.14 Percentage point difference between 18 year old offer rate and average offer rate by ethnic group

Note: The line for a group is not plotted when that group made fewer than 50 applications in any of the years from 2011-2016.

- Asian
- Black
- Mixed
- White
- Other



P.15 Applicants (all ages)

Statistic	2011	2012	2013	2014	2015	2016
June deadline applicants	25,985	22,295	23,415	25,890	26,235	25,760
Placed June deadline applicants	2,860	3,000	2,950	3,305	3,365	3,475
All placed applicants	2,975	3,170	3,195	3,505	3,685	3,820

P.16 Applications (all ages)

Statistic	2011	2012	2013	2014	2015	2016
June deadline applications	27,295	23,340	24,480	27,085	27,285	26,925
Offers	7,790	8,470	9,535	11,010	12,825	12,630
Offer rate	28.5%	36.3%	38.9%	40.7%	47.0%	46.9%

P.17 Applicants (all ages) by sex

Statistic	Sex	2011	2012	2013	2014	2015	2016
June deadline applicants	Men	9,245	7,900	8,160	9,035	9,060	8,940
	Women	16,740	14,395	15,255	16,855	17,175	16,820
Placed June deadline applicants	Men	1,115	1,140	1,125	1,225	1,195	1,210
	Women	1,745	1,860	1,825	2,080	2,170	2,265
All placed applicants	Men	1,155	1,210	1,200	1,295	1,325	1,345
	Women	1,825	1,965	1,990	2,210	2,360	2,475

P.18 Applications (all ages) by sex

Statistic	Sex	2011	2012	2013	2014	2015	2016
June deadline applications	Men	9,705	8,260	8,585	9,470	9,455	9,385
	Women	17,585	15,080	15,895	17,620	17,830	17,540
Offers	Men	3,190	3,560	3,925	4,570	5,190	4,855
	Women	4,595	4,910	5,610	6,440	7,635	7,775
Offer rate	Men	32.9%	43.1%	45.7%	48.3%	54.9%	51.7%
	Women	26.1%	32.5%	35.3%	36.6%	42.8%	44.3%

P.19 Applicants (all ages) by POLAR3 quintile

Statistic	POLAR3 quintile	2011	2012	2013	2014	2015	2016
June deadline applicants	Quintile 1	1,415	1,295	1,370	1,645	1,625	1,505
	Quintile 2	2,580	2,245	2,520	2,905	2,885	2,810
	Quintile 3	5,695	4,970	5,300	5,725	5,840	5,830
	Quintile 4	6,520	5,570	5,710	6,485	6,585	6,365
	Quintile 5	9,675	8,125	8,425	9,060	9,180	9,060
Placed June deadline applicants	Quintile 1	130	130	130	180	165	175
	Quintile 2	235	255	270	325	315	320
	Quintile 3	550	545	550	630	620	675
	Quintile 4	710	740	710	875	900	835
	Quintile 5	1,230	1,320	1,275	1,280	1,350	1,450
All placed applicants	Quintile 1	135	140	145	185	180	190
	Quintile 2	245	265	290	340	345	345
	Quintile 3	570	580	590	675	685	740
	Quintile 4	735	780	775	920	980	920
	Quintile 5	1,280	1,390	1,380	1,375	1,480	1,600

P.20 Applications (all ages) by POLAR3 quintile

Statistic	POLAR3 quintile	2011	2012	2013	2014	2015	2016
June deadline applications	Quintile 1	1,455	1,335	1,415	1,700	1,680	1,555
	Quintile 2	2,700	2,345	2,610	3,005	2,965	2,915
	Quintile 3	6,005	5,180	5,500	6,005	6,065	6,090
	Quintile 4	6,860	5,825	5,995	6,775	6,845	6,635
	Quintile 5	10,170	8,560	8,865	9,525	9,610	9,525
Offers	Quintile 1	325	365	455	570	625	610
	Quintile 2	650	700	865	1,080	1,210	1,130
	Quintile 3	1,365	1,445	1,645	2,005	2,355	2,395
	Quintile 4	1,895	2,030	2,300	2,785	3,240	3,125
	Quintile 5	3,530	3,885	4,230	4,545	5,330	5,290
Offer rate	Quintile 1	22.5%	27.2%	32.2%	33.6%	37.3%	39.3%
	Quintile 2	24.1%	29.8%	33.2%	36.0%	40.8%	38.8%
	Quintile 3	22.7%	27.9%	29.9%	33.4%	38.8%	39.3%
	Quintile 4	27.6%	34.9%	38.4%	41.1%	47.3%	47.1%
	Quintile 5	34.7%	45.4%	47.7%	47.7%	55.5%	55.5%

P.21 Applicants (all ages) by ethnic group

Statistic	Ethnic group	2011	2012	2013	2014	2015	2016
June deadline applicants	Asian	6,100	5,135	5,385	5,955	6,155	6,585
	Black	4,200	3,835	3,825	3,985	3,855	4,025
	Mixed	1,385	1,230	1,300	1,495	1,630	1,575
	White	13,095	10,905	11,675	13,055	13,110	12,115
	Other	785	850	865	1,030	1,040	1,020
Placed June deadline applicants	Asian	665	710	650	750	815	915
	Black	170	175	150	195	205	265
	Mixed	170	165	165	200	220	235
	White	1,745	1,795	1,850	2,000	1,955	1,875
	Other	70	110	80	110	120	130
All placed applicants	Asian	695	760	725	830	935	1,035
	Black	175	190	160	215	240	300
	Mixed	175	175	185	210	240	260
	White	1,810	1,885	1,970	2,085	2,070	2,030
	Other	75	115	90	120	135	135

P.22 Applications (all ages) by ethnic group

Statistic	Ethnic group	2011	2012	2013	2014	2015	2016
June deadline applications	Asian	6,530	5,510	5,755	6,320	6,460	6,990
	Black	4,340	3,960	3,950	4,110	3,955	4,135
	Mixed	1,465	1,280	1,360	1,570	1,705	1,655
	White	13,670	11,335	12,095	13,570	13,590	12,585
	Other	840	900	925	1,110	1,100	1,095
Offers	Asian	1,965	2,100	2,290	2,645	3,190	3,370
	Black	390	430	535	615	745	850
	Mixed	445	520	570	660	840	840
	White	4,670	5,015	5,710	6,580	7,420	6,920
	Other	200	270	265	365	425	445
Offer rate	Asian	30.1%	38.1%	39.8%	41.9%	49.3%	48.2%
	Black	9.0%	10.8%	13.5%	15.0%	18.8%	20.6%
	Mixed	30.5%	40.7%	42.0%	41.9%	49.3%	50.8%
	White	34.2%	44.3%	47.2%	48.5%	54.6%	55.0%
	Other	23.7%	29.8%	28.8%	33.1%	38.8%	40.5%

Technical Notes and Definitions

UCAS undergraduate scheme

Adjustment

Adjustment allows applicants who have met and exceeded the terms of their conditional firm offer to seek and find a place at another provider whilst keeping their place at their original firm choice provider.

Clearing

Clearing is a route for applicants that are not placed and holding no offers to find a place on courses with vacancies.

Cycle year

The UCAS application cycle which runs from September to October the following year. For example the 2016 cycle runs from September 2015 through to October 2016.

End of cycle

The point in the cycle to which the numbers in this report refer, and the point at which the cycle is closed such that no more applications or offers can be made, and no more applicants can be placed. Numbers reported at the end of cycle exclude information on a small number of applicants who cancelled during the cycle.

Extra

Applicants who are unsuccessful in obtaining an offer or decline all offers may be eligible to apply through Extra, where they can apply to one further course at a time. Extra operates from 25 February until early July. It provides applicants who are eligible the possibility of obtaining an offer before exam results are published and Clearing starts.

June 30 deadline

The deadline for main scheme applications. Applicants who apply after this date will go directly into Clearing.

Record of Prior Acceptance (RPA)

RPA is an acceptance route used when a provider informs UCAS of applicants it has accepted outside of the normal application process (e.g. individuals who have applied directly to the provider).

Reporting groups

Ethnic group

High level grouping of ethnic origin as declared by the applicant: 'White', 'Black', 'Asian', 'Mixed', 'Other', 'Unknown'. Applicants who declare themselves as 'Unknown' ethnic origin are not reported in these tables, but are included in the associated csv data file.

POLAR3 quintile

Developed by HEFCE, POLAR3 classifies small areas across the UK into five groups according to their level of young participation in Higher Education. Each of these groups represents around 20 per cent of young people and is ranked from Quintile 1 (areas with the lowest young participation rates, considered as the most disadvantaged) to Quintile 5 (highest young participation rates, considered most advantaged). POLAR3 is based on the participation rates of young people between 2005 and 2009 who entered Higher Education between 2005-06 and 2010-11, therefore is most suitable for applicants aged 19 and under. These groups are assigned using the postcode declared by the applicant at the time of their application. If a UK postcode is invalid, considered unsafe for measurement or there is no link to Census geography possible then the applicant is not assigned to a quintile. Applicants with no POLAR3 quintile are not reported.

Sex

Sex as declared by the applicant.

SIMD quintile

Scottish index of multiple deprivation (SIMD) for 2012 identifies small area concentrations of multiple deprivation across all of Scotland, providing a relative measure of deprivation amongst 6505 small areas (data zones) based on 7 socio-economic domains. These small areas are classified into five groups ranked from Quintile 1 (considered the most deprived) to Quintile 5 (considered least deprived), with equal populations in each quintile. Quintiles are assigned using the postcode declared by the applicant, applicants declaring invalid postcodes are classified as 'Not assigned' and are not reported.

SIMD is only defined for applicants domiciled in Scotland, therefore any applicants domiciled outside of Scotland cannot be assigned to an SIMD quintile and so are not reported for this measure.

SIMD is only reported for providers in Scotland. Application and entry rates by SIMD are reported in the 2016 End of Cycle Report and the 2016 cycle January deadline application rate report.

Statistics reported in the tables

All placed applicants

The number of applicants placed for entry into higher education at the provider through one of their choices, including any choices made through Extra, or via Adjustment, Clearing or RPA.

All placed applicants per 10,000 population

The number of total UK domiciled 18 year old placed applicants for entry into higher education at the provider divided by the number of UK 18 year olds in the population, multiplied by 10,000. This gives the number of 18 year olds, for every 10,000 in the population, that were placed at the provider through one of their choices, including any choices made through Extra, or via Adjustment, Clearing or RPA. It is an alternative way of expressing the entry rate to a provider. By referencing the underlying population this statistic shows how the number of placed applicants is changing in relation to the available pool of potential applicants and so gives the chance that somebody from the group will be placed at a provider.

This statistic is only reported for 18 year olds.

Average offer rate

The offer rate that you might expect if the predicted grades and subject choice of applicants were the only factors that influenced whether an applicant was made an offer by the provider. The average offer rate is calculated by dividing applicants according to their specific combination of grades (for A levels the best three predicted grades are used, for BTECs, International Baccalaureate and Scottish Highers and Advanced Highers, predicted grades along with any grades already achieved upon applying are used) and subject choice. For each combination the number of main scheme offers is divided by the number of main scheme applications, to give an overall offer rate. This is then multiplied by the number of applications made by the group for which the average offer rate is being calculated (for example POLAR3 quintile 1), to give an average number of offers for that group. These average number of offers are then added together across all combinations of predicted grade and subject and divided by the number of main scheme applications from the group to give the average offer rate.

The average offer rate does not attempt to control for any other factors that may play a part in the decision to make an offer, such as the subject of the qualifications studied, their relevance to a course, or the grade in each subject; higher numbers of A levels being studied; the exact profile of grades predicted; personal statements; teacher references; interviews; or any other criteria (such as work experience or portfolios) that may be part of the admissions decision.

This statistic is only reported for 18 year olds.

Contribution of group to the average offer rate

The way in which the average offer rate is defined means that the pattern of application and offers of a group (for example POLAR3 quintile 1) will always contribute, in part, to the average offer rate for that group. When this contribution is large, the average offer rate will mainly reflect the patterns for the group, meaning that the value of the average offer rate will be similar to the offer rate, the percentage point difference statistic will be small, and any real difference between the offer rate and what might be expected given the predicted grades and subject choices of the applicants will be difficult to detect.

Values of the contribution of group to the average offer rate range between 0 and 1. The closer the value is to 1 the greater the contribution a group makes to its own average offer rate.

This statistic is only reported for 18 year olds.

Placed June deadline applicants

An applicant who has been placed for entry into higher education at the provider through a June deadline application.

Placed June deadline applicants per 10,000 population

The number of UK domiciled 18 year old placed June deadline applicants at the provider divided by the number of UK 18 year olds in the population, multiplied by 10,000. This gives the number of 18 year olds, for every 10,000 in the population, that were placed at the provider through one of their June deadline applications. It is an alternative way of expressing the entry rate to a provider, but for placed June deadline applicants only. By referencing the underlying population this statistic shows how the number of placed June deadline applicants is changing in relation to the available pool of potential 18 year old applicants and so gives the chance that somebody from the group will be placed at a provider through a June deadline application.

This statistic is only reported for 18 year olds.

June deadline applications

An application (or choice) to a course in higher education to the provider that is made by the June 30 deadline. Each applicant can make up to five choices this way. The number of June deadline applications does not include choices made through the following routes: Clearing, Extra, Adjustment and RPAs. Applications made to October deadline courses received after the October deadline are not included in these statistics.

June deadline applicants

The number of applicants that made at least one application to the provider by the June 30 deadline.

June deadline applicants per 10,000 population

The number of UK domiciled 18 year old June deadline applicants to the provider divided by the number of UK 18 year olds in the population, multiplied by 10,000. This gives the number of 18 year olds, for every 10,000 in the population, who applied by the June 30 deadline. It is equivalent to the application rate. By referencing the underlying population this statistic shows how the number of June deadline applicants is changing in relation to the available pool of potential 18 year old applicants and so gives the chance that somebody from the group will apply to a provider by the June 30 deadline.

This statistic is only reported for 18 year olds.

Offers

An offer is defined as a provider's decision in response to an application to offer a place to an applicant, often subject to the applicant satisfying academic and/or other criteria, via a June deadline application (i.e. does not cover choices made through the following routes: Clearing, Extra, Adjustment and RPAs).

Offer rate

The number of offers made divided by the number of June deadline applications. This gives the proportion of all June deadline applications to the provider that received an offer.

Percentage point difference between offer rate and average offer rate

The offer rate minus the average offer rate.

The percentage point difference can be compared to the expected range of statistical variation resulting from the calculation of the average offer rate using the Average Offer Rate Lookup Table. Where the value of the percentage point difference lies outside of this range, the percentage point difference may be considered to represent a real difference between the offer rate and the average offer rate.

Other definitions

Age

This analysis uses country-specific age definitions that align with the cut off points for school and college cohorts within the different administrations of the UK. For England and Wales, ages are defined on the 31 August, for Northern Ireland on the 1 July and for Scotland on the 28 February the following year. Defining ages in this way matches the assignment of children to school cohorts. For applicants outside of the UK a cohort cut off of 31 August has been used.

Provider

A higher education provider - a university or college.

UK domiciled

Declared area of permanent residence within England, Northern Ireland, Scotland and Wales. Applicants from the Channel Islands and Isle of Man are not included.