

L14 Lancaster University

Cycle years: 2011 - 2016

Cycle Reference Point: End of Cycle

Applicant coverage: UK domiciled

Reporting groups: Sex, POLAR3, ethnic group

Applicant statistics: June deadline applicants, placed June deadline applicants, all placed applicants, June deadline applicants per 10,000 population, placed June deadline applicants per 10,000 population, all placed applicants per 10,000 population

Application statistics: June deadline applications, offers, offer rate, average offer rate, percentage point difference between offer rate and average offer rate, contribution of group to the average offer rate

Non-disclosure controls: To avoid the disclosure of information about any individual the following measures are taken

- Applicants, placed applicants, applications and offers are rounded to the nearest 5.
- Applicants/placed applicants per 10,000 population figures are reported as 0 if the applicant/placed applicant figures are rounded to 0.
- All statistics related to the offer rate are not reported when the number of applications for a group is less than 10. The percentage point difference between the offer rate and the average offer rate is not reported when the number of applications for a group is less than 50.
- Offer rates are reported as 0% if there are fewer than 5 offers, and 100% if the number of offers is within 5 of the number of applications. When the offer rate is reported as 0% or 100%, it is reported in italics.

Contents:

18 year old applicants:	P.1
18 year old applications:	P.2
18 year old applicants by sex:	P.3
18 year old applications by sex:	P.4
18 year old applicants by POLAR3 quintile:	P.7
18 year old applications by POLAR3 quintile:	P.8
18 year old applicants by ethnic group:	P.11
18 year old applications by ethnic group:	P.12
Applicants (all ages):	P.15
Applications (all ages):	P.16
Applicants (all ages) by sex:	P.17
Applications (all ages) by sex:	P.18
Applicants (all ages) by POLAR3 quintile:	P.19
Applications (all ages) by POLAR3 quintile:	P.20
Applicants (all ages) by ethnic group:	P.21
Applications (all ages) by ethnic group:	P.22

P.1 18 year old applicants

Statistic	2011	2012	2013	2014	2015	2016
June deadline applicants	9,540	9,930	8,485	7,835	9,440	9,020
Placed June deadline applicants	1,625	1,570	1,545	1,255	1,510	1,670
All placed applicants	1,670	1,695	1,785	1,580	1,715	1,890
June deadline applicants per 10,000 population	123.9	128.4	111.5	104.0	123.2	120.4
Placed June deadline applicants per 10,000	21.1	20.3	20.3	16.7	19.7	22.3
All placed applicants per 10,000 population	21.7	21.9	23.5	21.0	22.4	25.2

P.2 18 year old applications

Statistic	2011	2012	2013	2014	2015	2016
June deadline applications	9,965	10,270	8,760	8,080	9,740	9,315
Offers	9,075	9,335	7,975	7,200	8,355	8,495
Offer rate	91.1%	90.9%	91.0%	89.1%	85.8%	91.2%

P.3 18 year old applicants by sex

Statistic	Sex	2011	2012	2013	2014	2015	2016
June deadline applicants	Men	4,800	5,140	4,255	3,850	4,675	4,535
	Women	4,745	4,790	4,230	3,985	4,770	4,485
Placed June deadline applicants	Men	795	790	750	640	730	800
	Women	830	780	795	615	780	865
All placed applicants	Men	815	850	875	815	835	935
	Women	855	845	910	765	880	955
June deadline applicants per 10,000 population	Men	121.9	129.7	109.0	99.5	119.1	118.1
	Women	125.9	127.1	114.1	108.8	127.6	122.7
Placed June deadline applicants per 10,000 population	Men	20.2	20.0	19.2	16.5	18.7	20.9
	Women	22.0	20.7	21.5	16.8	20.8	23.7
All placed applicants per 10,000 population	Men	20.7	21.4	22.4	21.1	21.3	24.3
	Women	22.7	22.5	24.6	20.8	23.6	26.2

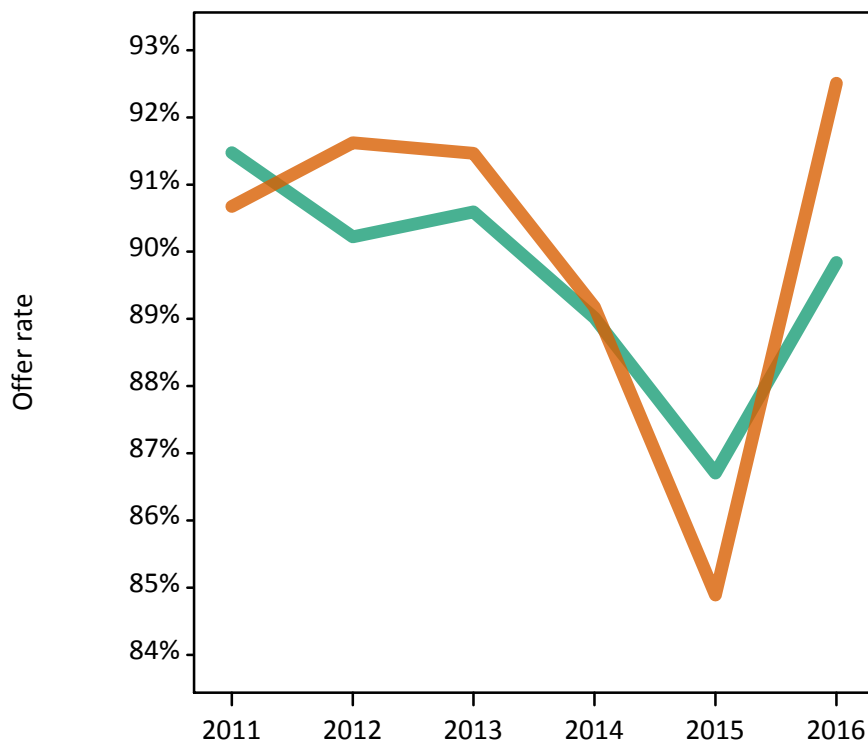
P.4 18 year old applications by sex

Statistic	Sex	2011	2012	2013	2014	2015	2016
June deadline applications	Men	5,010	5,320	4,400	3,985	4,835	4,685
	Women	4,955	4,955	4,360	4,095	4,905	4,630
Offers	Men	4,585	4,800	3,985	3,550	4,195	4,210
	Women	4,490	4,540	3,985	3,650	4,165	4,285
Offer rate	Men	91.5%	90.2%	90.6%	89.0%	86.7%	89.8%
	Women	90.7%	91.6%	91.5%	89.2%	84.9%	92.5%
Average offer rate	Men	91.4%	90.4%	90.9%	89.3%	87.0%	90.3%
	Women	90.8%	91.4%	91.1%	88.9%	84.6%	92.1%
Percentage point difference between offer rate and average offer rate	Men	0.1	-0.2	-0.3	-0.2	-0.3	-0.4
	Women	-0.1	0.2	0.3	0.2	0.3	0.4
Contribution of group to the average offer rate	Men	0.634	0.645	0.651	0.649	0.651	0.653
	Women	0.630	0.619	0.647	0.658	0.656	0.649

P.5 18 year old offer rate by sex

Note: The line for a group is not plotted when that group made fewer than 10 applications in any of the years from 2011-2016.

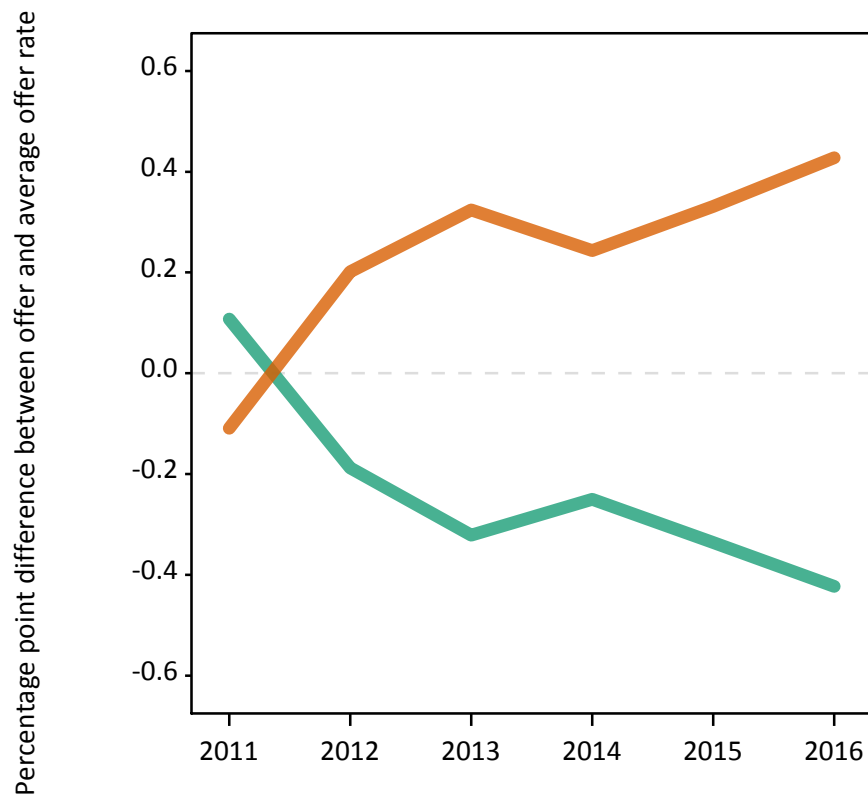
Men
Women



P.6 Percentage point difference between 18 year old offer rate and average offer rate by sex

Note: The line for a group is not plotted when that group made fewer than 50 applications in any of the years from 2011-2016.

Men
Women



P.7 18 year old applicants by POLAR3 quintile

Statistic	POLAR3 quintile	2011	2012	2013	2014	2015	2016
June deadline applicants	Quintile 1	860	875	780	730	940	935
	Quintile 2	1,270	1,350	1,175	1,140	1,355	1,240
	Quintile 3	1,755	1,870	1,600	1,470	1,805	1,780
	Quintile 4	2,370	2,455	2,055	1,875	2,400	2,260
	Quintile 5	3,265	3,370	2,865	2,600	2,915	2,775
Placed June deadline applicants	Quintile 1	145	155	145	120	140	155
	Quintile 2	215	210	210	185	195	225
	Quintile 3	315	310	315	240	310	335
	Quintile 4	415	400	390	340	410	415
	Quintile 5	530	495	490	370	450	535
All placed applicants	Quintile 1	150	155	165	135	160	170
	Quintile 2	220	225	235	235	230	250
	Quintile 3	320	345	360	305	335	375
	Quintile 4	430	430	435	420	460	470
	Quintile 5	545	540	590	485	525	615
June deadline applicants per 10,000 population	Quintile 1	59.7	61.4	56.1	52.5	67.1	69.1
	Quintile 2	84.4	89.9	79.7	78.0	91.2	85.7
	Quintile 3	114.0	121.1	104.8	97.6	117.7	118.5
	Quintile 4	151.4	154.7	131.5	121.6	153.3	146.3
	Quintile 5	197.3	200.5	173.3	159.4	174.1	168.0
Placed June deadline applicants per 10,000 population	Quintile 1	10.2	10.8	10.5	8.5	10.0	11.6
	Quintile 2	14.4	14.1	14.3	12.7	13.2	15.4
	Quintile 3	20.3	20.2	20.5	15.9	20.1	22.2
	Quintile 4	26.4	25.1	24.9	22.1	26.1	26.8
	Quintile 5	32.0	29.5	29.5	22.6	26.8	32.4
All placed applicants per 10,000 population	Quintile 1	10.4	11.0	11.8	9.8	11.3	12.6
	Quintile 2	14.8	14.9	15.9	15.9	15.4	17.2
	Quintile 3	20.8	22.3	23.7	20.1	21.9	25.1
	Quintile 4	27.4	27.0	27.8	27.1	29.3	30.6
	Quintile 5	32.9	32.3	35.6	29.7	31.4	37.2

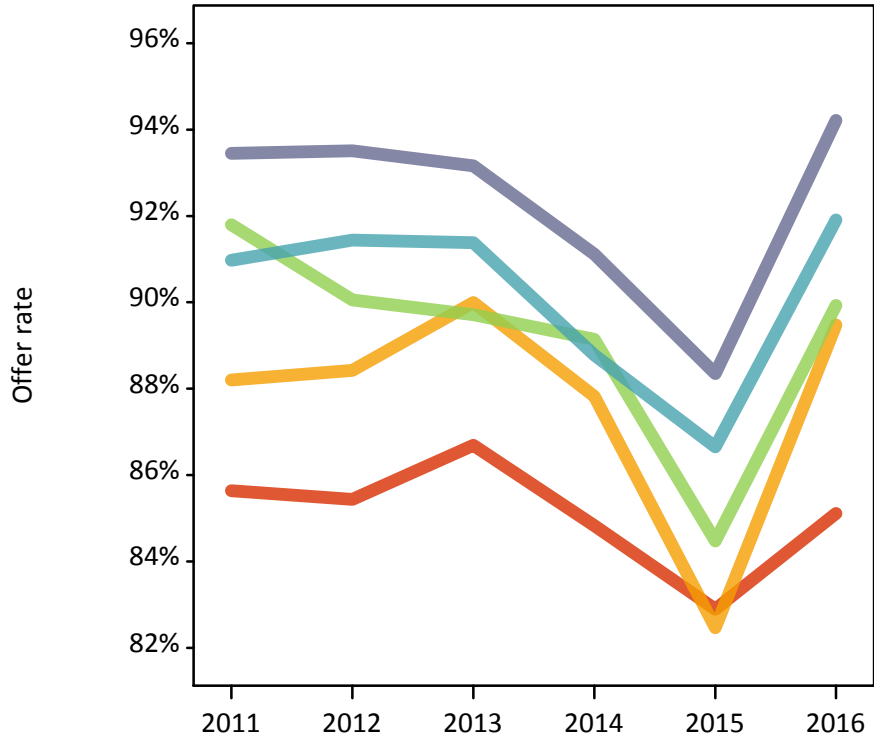
P.8 18 year old applications by POLAR3 quintile

Statistic	POLAR3 quintile	2011	2012	2013	2014	2015	2016
June deadline applications	Quintile 1	905	920	820	745	980	975
	Quintile 2	1,320	1,390	1,220	1,190	1,395	1,275
	Quintile 3	1,840	1,920	1,655	1,510	1,870	1,825
	Quintile 4	2,480	2,560	2,125	1,945	2,490	2,335
	Quintile 5	3,390	3,465	2,940	2,665	2,980	2,870
Offers	Quintile 1	775	785	710	630	815	830
	Quintile 2	1,165	1,230	1,095	1,045	1,150	1,140
	Quintile 3	1,690	1,730	1,485	1,345	1,580	1,645
	Quintile 4	2,260	2,340	1,940	1,725	2,155	2,145
	Quintile 5	3,170	3,240	2,735	2,430	2,630	2,705
Offer rate	Quintile 1	85.6%	85.4%	86.7%	84.8%	82.9%	85.1%
	Quintile 2	88.2%	88.4%	90.0%	87.8%	82.5%	89.5%
	Quintile 3	91.8%	90.1%	89.7%	89.1%	84.5%	89.9%
	Quintile 4	91.0%	91.4%	91.4%	88.8%	86.7%	91.9%
	Quintile 5	93.5%	93.5%	93.2%	91.1%	88.4%	94.2%
Average offer rate	Quintile 1	86.8%	87.0%	88.2%	86.0%	84.0%	86.9%
	Quintile 2	88.5%	88.8%	89.4%	88.4%	82.9%	90.3%
	Quintile 3	91.5%	90.0%	90.3%	89.4%	84.5%	89.9%
	Quintile 4	91.2%	91.2%	91.0%	88.9%	86.7%	92.0%
	Quintile 5	93.0%	93.1%	93.0%	90.3%	87.8%	93.2%
Percentage point difference between offer rate and average offer rate	Quintile 1	-1.2	-1.5	-1.5	-1.2	-1.1	-1.8
	Quintile 2	-0.3	-0.4	0.6	-0.6	-0.4	-0.8
	Quintile 3	0.3	0.1	-0.6	-0.2	0.0	0.0
	Quintile 4	-0.2	0.2	0.4	-0.1	-0.0	-0.1
	Quintile 5	0.4	0.4	0.2	0.8	0.6	1.0
Contribution of group to the average offer rate	Quintile 1	0.207	0.196	0.200	0.203	0.208	0.199
	Quintile 2	0.224	0.217	0.226	0.237	0.228	0.226
	Quintile 3	0.260	0.264	0.267	0.270	0.266	0.278
	Quintile 4	0.319	0.316	0.315	0.316	0.323	0.321
	Quintile 5	0.413	0.407	0.409	0.411	0.385	0.383

P.9 18 year old offer rate by POLAR3 quintile

Note: The line for a group is not plotted when that group made fewer than 10 applications in any of the years from 2011-2016.

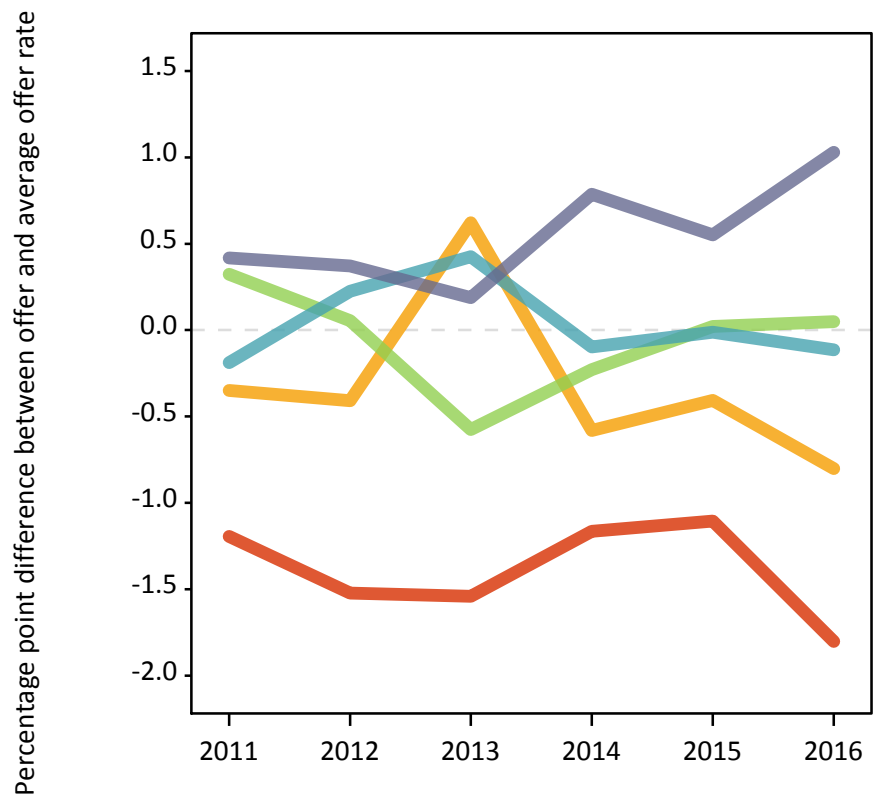
- Quintile 1
- Quintile 2
- Quintile 3
- Quintile 4
- Quintile 5



P.10 Percentage point difference between 18 year old offer rate and average offer rate by POLAR3 quintile

Note: The line for a group is not plotted when that group made fewer than 50 applications in any of the years from 2011-2016.

- Quintile 1
- Quintile 2
- Quintile 3
- Quintile 4
- Quintile 5



P.11 18 year old applicants by ethnic group

Statistic	Ethnic group	2011	2012	2013	2014	2015	2016
June deadline applicants	Asian	525	665	625	650	945	790
	Black	190	205	235	260	295	265
	Mixed	240	285	260	235	320	300
	White	8,490	8,690	7,280	6,610	7,740	7,535
	Other	40	45	35	50	80	75
Placed June deadline applicants	Asian	50	75	60	70	90	90
	Black	15	20	35	25	25	25
	Mixed	40	35	35	45	50	35
	White	1,500	1,430	1,410	1,110	1,335	1,505
	Other	5	5	5	5	5	5
All placed applicants	Asian	55	80	85	110	115	120
	Black	20	30	45	45	40	40
	Mixed	40	40	40	60	65	45
	White	1,540	1,535	1,605	1,350	1,480	1,665
	Other	5	5	5	5	10	10
June deadline applicants per 10,000 population	Asian	83.3	102.5	94.5	95.6	133.5	110.1
	Black	70.2	73.2	79.8	85.8	93.0	85.3
	Mixed	99.5	109.4	95.4	81.3	103.5	96.0
	White	131.1	134.6	115.7	107.2	124.2	124.6
	Other	46.9	52.0	39.7	53.7	82.0	75.5
Placed June deadline applicants per 10,000 population	Asian	8.3	11.6	8.8	10.0	12.6	12.2
	Black	5.9	7.8	11.5	8.9	8.2	8.0
	Mixed	16.5	13.1	12.2	15.3	15.6	11.1
	White	23.2	22.1	22.4	18.0	21.4	24.9
	Other	3.7	6.8	4.4	5.4	7.3	7.1
All placed applicants per 10,000 population	Asian	9.0	12.7	12.7	16.5	16.0	16.4
	Black	6.6	10.7	14.8	14.8	12.3	13.1
	Mixed	16.9	15.0	15.2	20.9	20.4	14.0
	White	23.8	23.8	25.5	21.9	23.8	27.5
	Other	3.7	7.9	4.4	6.4	11.4	11.1

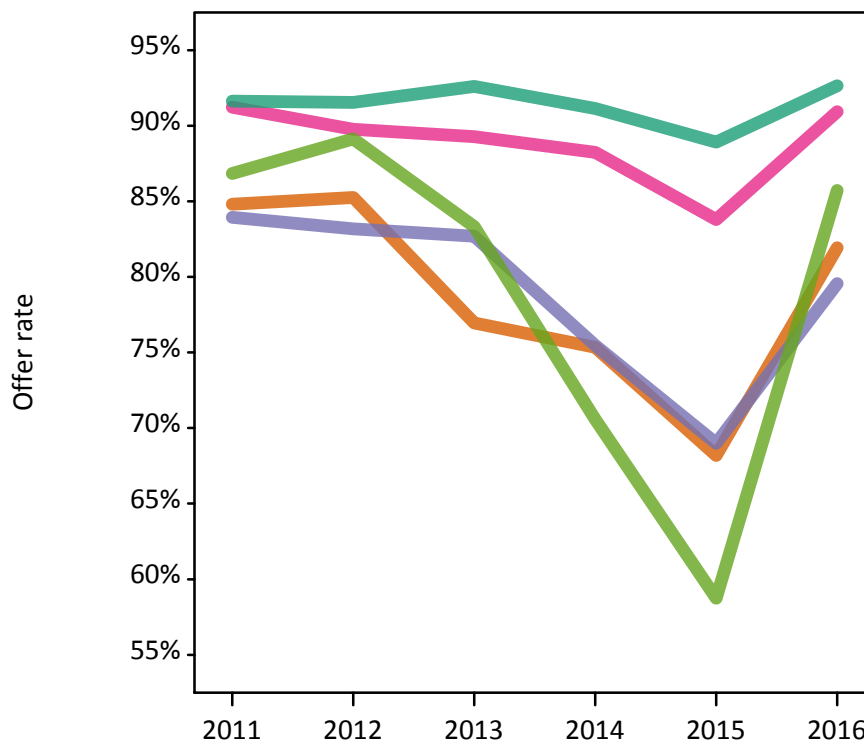
P.12 18 year old applications by ethnic group

Statistic	Ethnic group	2011	2012	2013	2014	2015	2016
June deadline applications	Asian	535	680	630	665	960	810
	Black	195	210	235	260	300	270
	Mixed	250	295	260	240	320	310
	White	8,890	9,005	7,545	6,830	8,015	7,800
	Other	40	45	35	50	80	75
Offers	Asian	450	580	485	500	655	660
	Black	160	175	195	195	205	215
	Mixed	230	265	235	210	270	280
	White	8,145	8,245	6,985	6,225	7,130	7,225
	Other	35	40	30	35	45	65
Offer rate	Asian	84.8%	85.3%	76.9%	75.3%	68.2%	81.9%
	Black	83.9%	83.2%	82.7%	75.5%	69.0%	79.6%
	Mixed	91.2%	89.8%	89.3%	88.2%	83.8%	90.9%
	White	91.6%	91.6%	92.6%	91.1%	88.9%	92.7%
	Other	86.8%	89.1%	83.3%	70.6%	58.8%	85.7%
Average offer rate	Asian	87.9%	86.3%	79.7%	77.2%	70.6%	84.6%
	Black	86.4%	85.8%	84.2%	77.7%	71.5%	83.5%
	Mixed	90.0%	89.8%	89.9%	88.5%	83.8%	91.3%
	White	91.4%	91.4%	92.3%	90.8%	88.5%	92.2%
	Other	90.0%	90.1%	86.2%	73.1%	64.7%	83.5%
Percentage point difference between offer rate and average offer rate	Asian	-3.1	-1.1	-2.7	-1.8	-2.4	-2.6
	Black	-2.5	-2.6	-1.5	-2.2	-2.5	-4.0
	Mixed	1.2	-0.1	-0.6	-0.3	0.0	-0.4
	White	0.2	0.2	0.3	0.3	0.4	0.4
	Other	N/A	N/A	N/A	-2.5	-6.0	2.2
Contribution of group to the average offer rate	Asian	0.192	0.198	0.231	0.242	0.241	0.222
	Black	0.150	0.156	0.156	0.215	0.159	0.173
	Mixed	0.134	0.117	0.144	0.137	0.135	0.132
	White	0.908	0.895	0.886	0.877	0.857	0.866
	Other	0.109	0.105	0.102	0.197	0.114	0.174

P.13 18 year old offer rate by ethnic group

Note: The line for a group is not plotted when that group made fewer than 10 applications in any of the years from 2011-2016.

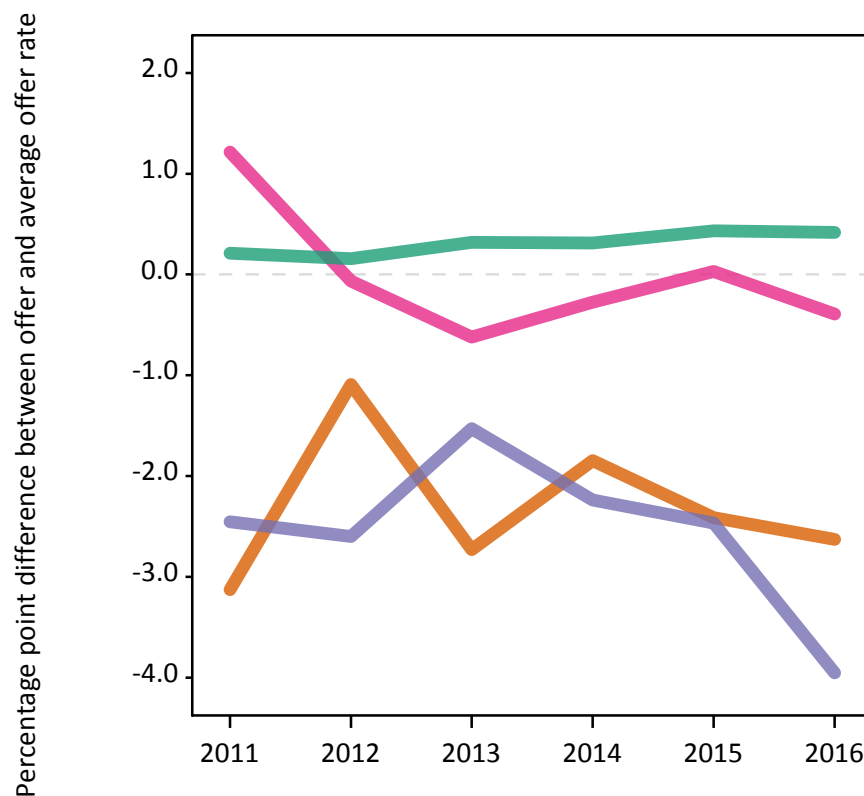
- Asian
- Black
- Mixed
- White
- Other



P.14 Percentage point difference between 18 year old offer rate and average offer rate by ethnic group

Note: The line for a group is not plotted when that group made fewer than 50 applications in any of the years from 2011-2016.

- Asian
- Black
- Mixed
- White
- Other



P.15 Applicants (all ages)

Statistic	2011	2012	2013	2014	2015	2016
June deadline applicants	12,620	12,405	11,160	10,870	13,085	12,100
Placed June deadline applicants	2,155	1,945	2,020	1,710	2,020	2,195
All placed applicants	2,220	2,110	2,340	2,120	2,305	2,485

P.16 Applications (all ages)

Statistic	2011	2012	2013	2014	2015	2016
June deadline applications	13,210	12,875	11,605	11,275	13,545	12,560
Offers	11,210	11,035	9,760	9,190	10,630	10,715
Offer rate	84.9%	85.7%	84.1%	81.5%	78.5%	85.3%

P.17 Applicants (all ages) by sex

Statistic	Sex	2011	2012	2013	2014	2015	2016
June deadline applicants	Men	6,365	6,550	5,635	5,450	6,665	6,215
	Women	6,250	5,855	5,525	5,425	6,420	5,885
Placed June deadline applicants	Men	1,075	1,010	995	875	1,030	1,095
	Women	1,080	930	1,025	830	990	1,105
All placed applicants	Men	1,105	1,090	1,170	1,105	1,175	1,270
	Women	1,115	1,020	1,170	1,015	1,130	1,215

P.18 Applications (all ages) by sex

Statistic	Sex	2011	2012	2013	2014	2015	2016
June deadline applications	Men	6,675	6,800	5,875	5,665	6,920	6,435
	Women	6,535	6,075	5,730	5,605	6,620	6,120
Offers	Men	5,730	5,785	4,910	4,595	5,540	5,420
	Women	5,480	5,250	4,850	4,590	5,090	5,290
Offer rate	Men	85.9%	85.1%	83.6%	81.1%	80.0%	84.2%
	Women	83.8%	86.4%	84.7%	81.9%	76.9%	86.5%

P.19 Applicants (all ages) by POLAR3 quintile

Statistic	POLAR3 quintile	2011	2012	2013	2014	2015	2016
June deadline applicants	Quintile 1	1,260	1,200	1,110	1,160	1,395	1,340
	Quintile 2	1,715	1,730	1,630	1,625	1,965	1,735
	Quintile 3	2,325	2,310	2,125	2,080	2,490	2,375
	Quintile 4	3,110	3,025	2,660	2,590	3,235	3,000
	Quintile 5	4,165	4,110	3,620	3,390	3,960	3,590
Placed June deadline applicants	Quintile 1	200	200	205	180	205	225
	Quintile 2	280	260	290	255	275	300
	Quintile 3	405	380	390	335	415	430
	Quintile 4	565	495	480	460	520	545
	Quintile 5	700	605	655	480	595	685
All placed applicants	Quintile 1	210	210	230	210	230	245
	Quintile 2	285	280	330	310	315	335
	Quintile 3	415	420	455	420	465	485
	Quintile 4	585	535	555	560	590	620
	Quintile 5	720	670	775	620	690	790

P.20 Applications (all ages) by POLAR3 quintile

Statistic	POLAR3 quintile	2011	2012	2013	2014	2015	2016
June deadline applications	Quintile 1	1,330	1,270	1,180	1,195	1,460	1,415
	Quintile 2	1,790	1,810	1,710	1,710	2,035	1,790
	Quintile 3	2,435	2,375	2,200	2,140	2,575	2,455
	Quintile 4	3,270	3,155	2,755	2,700	3,365	3,105
	Quintile 5	4,345	4,240	3,745	3,495	4,065	3,735
Offers	Quintile 1	990	985	905	885	1,080	1,085
	Quintile 2	1,440	1,475	1,405	1,350	1,505	1,475
	Quintile 3	2,065	2,010	1,795	1,720	2,015	2,065
	Quintile 4	2,815	2,760	2,355	2,240	2,670	2,690
	Quintile 5	3,875	3,785	3,290	2,975	3,320	3,345
Offer rate	Quintile 1	74.4%	77.4%	76.8%	74.0%	74.0%	76.8%
	Quintile 2	80.4%	81.7%	82.2%	78.8%	74.0%	82.5%
	Quintile 3	84.8%	84.7%	81.6%	80.3%	78.2%	84.1%
	Quintile 4	86.1%	87.4%	85.3%	82.9%	79.3%	86.7%
	Quintile 5	89.2%	89.3%	87.9%	85.1%	81.7%	89.5%

P.21 Applicants (all ages) by ethnic group

Statistic	Ethnic group	2011	2012	2013	2014	2015	2016
June deadline applicants	Asian	790	955	1,020	1,120	1,605	1,315
	Black	375	360	425	470	575	495
	Mixed	350	395	365	365	475	435
	White	10,950	10,540	9,175	8,760	10,175	9,630
	Other	60	80	90	95	145	130
Placed June deadline applicants	Asian	90	115	85	100	125	150
	Black	30	35	55	45	40	45
	Mixed	60	50	50	65	65	60
	White	1,950	1,720	1,815	1,490	1,765	1,915
	Other	5	10	10	10	10	10
All placed applicants	Asian	95	130	130	165	160	200
	Black	35	45	70	70	60	65
	Mixed	60	60	60	85	85	75
	White	2,000	1,850	2,055	1,790	1,965	2,110
	Other	5	10	10	10	15	20

P.22 Applications (all ages) by ethnic group

Statistic	Ethnic group	2011	2012	2013	2014	2015	2016
June deadline applications	Asian	800	975	1,040	1,145	1,635	1,345
	Black	375	365	430	475	585	505
	Mixed	370	405	370	380	480	445
	White	11,515	10,970	9,590	9,115	10,585	10,030
	Other	60	80	90	95	145	135
Offers	Asian	635	770	685	735	955	1,005
	Black	265	250	295	290	335	325
	Mixed	305	330	300	300	350	375
	White	9,885	9,560	8,355	7,765	8,825	8,835
	Other	50	65	60	60	85	105
Offer rate	Asian	79.0%	79.1%	66.1%	63.9%	58.5%	74.8%
	Black	69.8%	68.5%	69.4%	61.4%	57.6%	64.5%
	Mixed	83.4%	81.5%	80.9%	78.9%	72.7%	84.7%
	White	85.9%	87.1%	87.1%	85.2%	83.3%	88.1%
	Other	82.0%	81.5%	65.2%	63.5%	59.7%	76.3%

Technical Notes and Definitions

UCAS undergraduate scheme

Adjustment

Adjustment allows applicants who have met and exceeded the terms of their conditional firm offer to seek and find a place at another provider whilst keeping their place at their original firm choice provider.

Clearing

Clearing is a route for applicants that are not placed and holding no offers to find a place on courses with vacancies.

Cycle year

The UCAS application cycle which runs from September to October the following year. For example the 2016 cycle runs from September 2015 through to October 2016.

End of cycle

The point in the cycle to which the numbers in this report refer, and the point at which the cycle is closed such that no more applications or offers can be made, and no more applicants can be placed. Numbers reported at the end of cycle exclude information on a small number of applicants who cancelled during the cycle.

Extra

Applicants who are unsuccessful in obtaining an offer or decline all offers may be eligible to apply through Extra, where they can apply to one further course at a time. Extra operates from 25 February until early July. It provides applicants who are eligible the possibility of obtaining an offer before exam results are published and Clearing starts.

June 30 deadline

The deadline for main scheme applications. Applicants who apply after this date will go directly into Clearing.

Record of Prior Acceptance (RPA)

RPA is an acceptance route used when a provider informs UCAS of applicants it has accepted outside of the normal application process (e.g. individuals who have applied directly to the provider).

Reporting groups

Ethnic group

High level grouping of ethnic origin as declared by the applicant: 'White', 'Black', 'Asian', 'Mixed', 'Other', 'Unknown'. Applicants who declare themselves as 'Unknown' ethnic origin are not reported in these tables, but are included in the associated csv data file.

POLAR3 quintile

Developed by HEFCE, POLAR3 classifies small areas across the UK into five groups according to their level of young participation in Higher Education. Each of these groups represents around 20 per cent of young people and is ranked from Quintile 1 (areas with the lowest young participation rates, considered as the most disadvantaged) to Quintile 5 (highest young participation rates, considered most advantaged). POLAR3 is based on the participation rates of young people between 2005 and 2009 who entered Higher Education between 2005-06 and 2010-11, therefore is most suitable for applicants aged 19 and under. These groups are assigned using the postcode declared by the applicant at the time of their application. If a UK postcode is invalid, considered unsafe for measurement or there is no link to Census geography possible then the applicant is not assigned to a quintile. Applicants with no POLAR3 quintile are not reported.

Sex

Sex as declared by the applicant.

SIMD quintile

Scottish index of multiple deprivation (SIMD) for 2012 identifies small area concentrations of multiple deprivation across all of Scotland, providing a relative measure of deprivation amongst 6505 small areas (data zones) based on 7 socio-economic domains. These small areas are classified into five groups ranked from Quintile 1 (considered the most deprived) to Quintile 5 (considered least deprived), with equal populations in each quintile. Quintiles are assigned using the postcode declared by the applicant, applicants declaring invalid postcodes are classified as 'Not assigned' and are not reported.

SIMD is only defined for applicants domiciled in Scotland, therefore any applicants domiciled outside of Scotland cannot be assigned to an SIMD quintile and so are not reported for this measure.

SIMD is only reported for providers in Scotland. Application and entry rates by SIMD are reported in the 2016 End of Cycle Report and the 2016 cycle January deadline application rate report.

Statistics reported in the tables

All placed applicants

The number of applicants placed for entry into higher education at the provider through one of their choices, including any choices made through Extra, or via Adjustment, Clearing or RPA.

All placed applicants per 10,000 population

The number of total UK domiciled 18 year old placed applicants for entry into higher education at the provider divided by the number of UK 18 year olds in the population, multiplied by 10,000. This gives the number of 18 year olds, for every 10,000 in the population, that were placed at the provider through one of their choices, including any choices made through Extra, or via Adjustment, Clearing or RPA. It is an alternative way of expressing the entry rate to a provider. By referencing the underlying population this statistic shows how the number of placed applicants is changing in relation to the available pool of potential applicants and so gives the chance that somebody from the group will be placed at a provider.

This statistic is only reported for 18 year olds.

Average offer rate

The offer rate that you might expect if the predicted grades and subject choice of applicants were the only factors that influenced whether an applicant was made an offer by the provider. The average offer rate is calculated by dividing applicants according to their specific combination of grades (for A levels the best three predicted grades are used, for BTECs, International Baccalaureate and Scottish Highers and Advanced Highers, predicted grades along with any grades already achieved upon applying are used) and subject choice. For each combination the number of main scheme offers is divided by the number of main scheme applications, to give an overall offer rate. This is then multiplied by the number of applications made by the group for which the average offer rate is being calculated (for example POLAR3 quintile 1), to give an average number of offers for that group. These average number of offers are then added together across all combinations of predicted grade and subject and divided by the number of main scheme applications from the group to give the average offer rate.

The average offer rate does not attempt to control for any other factors that may play a part in the decision to make an offer, such as the subject of the qualifications studied, their relevance to a course, or the grade in each subject; higher numbers of A levels being studied; the exact profile of grades predicted; personal statements; teacher references; interviews; or any other criteria (such as work experience or portfolios) that may be part of the admissions decision.

This statistic is only reported for 18 year olds.

Contribution of group to the average offer rate

The way in which the average offer rate is defined means that the pattern of application and offers of a group (for example POLAR3 quintile 1) will always contribute, in part, to the average offer rate for that group. When this contribution is large, the average offer rate will mainly reflect the patterns for the group, meaning that the value of the average offer rate will be similar to the offer rate, the percentage point difference statistic will be small, and any real difference between the offer rate and what might be expected given the predicted grades and subject choices of the applicants will be difficult to detect.

Values of the contribution of group to the average offer rate range between 0 and 1. The closer the value is to 1 the greater the contribution a group makes to its own average offer rate.

This statistic is only reported for 18 year olds.

Placed June deadline applicants

An applicant who has been placed for entry into higher education at the provider through a June deadline application.

Placed June deadline applicants per 10,000 population

The number of UK domiciled 18 year old placed June deadline applicants at the provider divided by the number of UK 18 year olds in the population, multiplied by 10,000. This gives the number of 18 year olds, for every 10,000 in the population, that were placed at the provider through one of their June deadline applications. It is an alternative way of expressing the entry rate to a provider, but for placed June deadline applicants only. By referencing the underlying population this statistic shows how the number of placed June deadline applicants is changing in relation to the available pool of potential 18 year old applicants and so gives the chance that somebody from the group will be placed at a provider through a June deadline application.

This statistic is only reported for 18 year olds.

June deadline applications

An application (or choice) to a course in higher education to the provider that is made by the June 30 deadline. Each applicant can make up to five choices this way. The number of June deadline applications does not include choices made through the following routes: Clearing, Extra, Adjustment and RPAs. Applications made to October deadline courses received after the October deadline are not included in these statistics.

June deadline applicants

The number of applicants that made at least one application to the provider by the June 30 deadline.

June deadline applicants per 10,000 population

The number of UK domiciled 18 year old June deadline applicants to the provider divided by the number of UK 18 year olds in the population, multiplied by 10,000. This gives the number of 18 year olds, for every 10,000 in the population, who applied by the June 30 deadline. It is equivalent to the application rate. By referencing the underlying population this statistic shows how the number of June deadline applicants is changing in relation to the available pool of potential 18 year old applicants and so gives the chance that somebody from the group will apply to a provider by the June 30 deadline.

This statistic is only reported for 18 year olds.

Offers

An offer is defined as a provider's decision in response to an application to offer a place to an applicant, often subject to the applicant satisfying academic and/or other criteria, via a June deadline application (i.e. does not cover choices made through the following routes: Clearing, Extra, Adjustment and RPAs).

Offer rate

The number of offers made divided by the number of June deadline applications. This gives the proportion of all June deadline applications to the provider that received an offer.

Percentage point difference between offer rate and average offer rate

The offer rate minus the average offer rate.

The percentage point difference can be compared to the expected range of statistical variation resulting from the calculation of the average offer rate using the Average Offer Rate Lookup Table. Where the value of the percentage point difference lies outside of this range, the percentage point difference may be considered to represent a real difference between the offer rate and the average offer rate.

Other definitions

Age

This analysis uses country-specific age definitions that align with the cut off points for school and college cohorts within the different administrations of the UK. For England and Wales, ages are defined on the 31 August, for Northern Ireland on the 1 July and for Scotland on the 28 February the following year. Defining ages in this way matches the assignment of children to school cohorts. For applicants outside of the UK a cohort cut off of 31 August has been used.

Provider

A higher education provider - a university or college.

UK domiciled

Declared area of permanent residence within England, Northern Ireland, Scotland and Wales. Applicants from the Channel Islands and Isle of Man are not included.