

L27 Leeds Beckett University

Cycle years: 2011 - 2016

Cycle Reference Point: End of Cycle

Applicant coverage: UK domiciled

Reporting groups: Sex, POLAR3, ethnic group

Applicant statistics: June deadline applicants, placed June deadline applicants, all placed applicants, June deadline applicants per 10,000 population, placed June deadline applicants per 10,000 population, all placed applicants per 10,000 population

Application statistics: June deadline applications, offers, offer rate, average offer rate, percentage point difference between offer rate and average offer rate, contribution of group to the average offer rate

Non-disclosure controls: To avoid the disclosure of information about any individual the following measures are taken

- Applicants, placed applicants, applications and offers are rounded to the nearest 5.
- Applicants/placed applicants per 10,000 population figures are reported as 0 if the applicant/placed applicant figures are rounded to 0.
- All statistics related to the offer rate are not reported when the number of applications for a group is less than 10. The percentage point difference between the offer rate and the average offer rate is not reported when the number of applications for a group is less than 50.
- Offer rates are reported as 0% if there are fewer than 5 offers, and 100% if the number of offers is within 5 of the number of applications. When the offer rate is reported as 0% or 100%, it is reported in italics.

Contents:

18 year old applicants:	P.1
18 year old applications:	P.2
18 year old applicants by sex:	P.3
18 year old applications by sex:	P.4
18 year old applicants by POLAR3 quintile:	P.7
18 year old applications by POLAR3 quintile:	P.8
18 year old applicants by ethnic group:	P.11
18 year old applications by ethnic group:	P.12
Applicants (all ages):	P.15
Applications (all ages):	P.16
Applicants (all ages) by sex:	P.17
Applications (all ages) by sex:	P.18
Applicants (all ages) by POLAR3 quintile:	P.19
Applications (all ages) by POLAR3 quintile:	P.20
Applicants (all ages) by ethnic group:	P.21
Applications (all ages) by ethnic group:	P.22

P.1 18 year old applicants

Statistic	2011	2012	2013	2014	2015	2016
June deadline applicants	21,040	19,315	15,275	16,250	14,725	14,785
Placed June deadline applicants	3,750	2,435	2,585	2,935	3,340	3,130
All placed applicants	3,885	2,960	3,560	3,820	3,910	3,670
June deadline applicants per 10,000 population	273.2	249.7	200.7	215.8	192.2	197.2
Placed June deadline applicants per 10,000	48.7	31.5	34.0	39.0	43.6	41.8
All placed applicants per 10,000 population	50.5	38.3	46.8	50.7	51.1	49.0

P.2 18 year old applications

Statistic	2011	2012	2013	2014	2015	2016
June deadline applications	23,520	21,070	16,245	17,310	15,685	15,745
Offers	14,360	10,700	12,205	13,535	12,460	12,525
Offer rate	61.1%	50.8%	75.1%	78.2%	79.4%	79.5%

P.3 18 year old applicants by sex

Statistic	Sex	2011	2012	2013	2014	2015	2016
June deadline applicants	Men	9,515	8,255	6,685	7,170	6,320	6,230
	Women	11,530	11,065	8,585	9,085	8,400	8,555
Placed June deadline applicants	Men	1,845	1,080	1,265	1,430	1,605	1,420
	Women	1,905	1,350	1,320	1,505	1,735	1,715
All placed applicants	Men	1,900	1,345	1,745	1,845	1,845	1,650
	Women	1,990	1,615	1,815	1,975	2,065	2,025
June deadline applicants per 10,000 population	Men	241.8	208.1	171.3	185.2	161.1	162.2
	Women	306.1	293.5	231.7	248.1	224.8	234.1
Placed June deadline applicants per 10,000 population	Men	46.9	27.3	32.4	36.9	40.8	36.9
	Women	50.6	35.9	35.6	41.1	46.5	46.9
All placed applicants per 10,000 population	Men	48.3	33.9	44.7	47.7	47.0	42.9
	Women	52.8	42.9	49.0	54.0	55.3	55.4

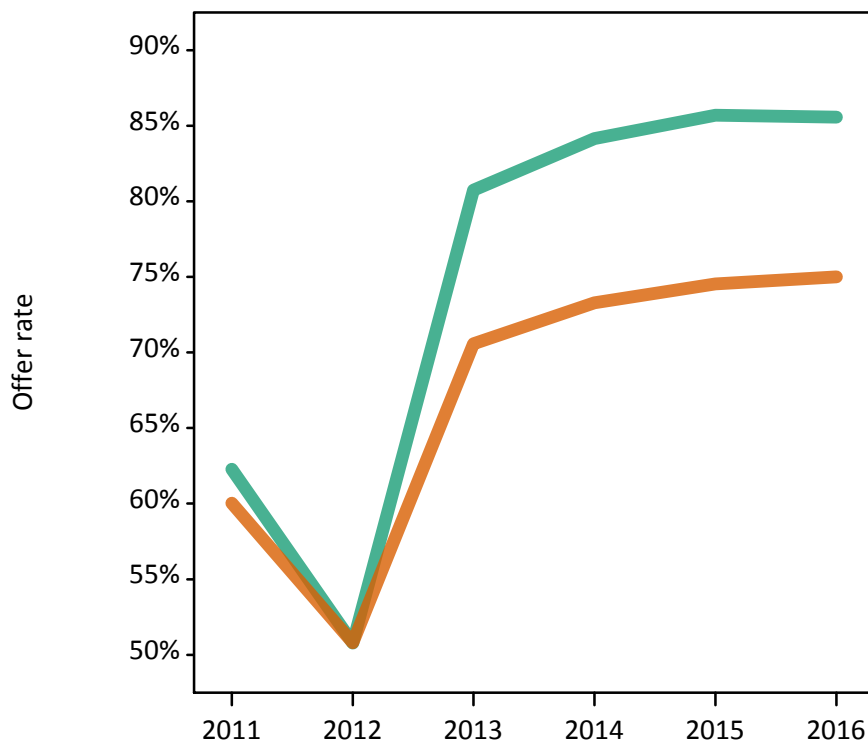
P.4 18 year old applications by sex

Statistic	Sex	2011	2012	2013	2014	2015	2016
June deadline applications	Men	10,915	9,245	7,285	7,830	6,890	6,760
	Women	12,605	11,825	8,960	9,480	8,795	8,985
Offers	Men	6,795	4,695	5,880	6,590	5,905	5,785
	Women	7,565	6,005	6,325	6,945	6,555	6,740
Offer rate	Men	62.3%	50.8%	80.7%	84.2%	85.7%	85.6%
	Women	60.0%	50.8%	70.6%	73.3%	74.5%	75.0%
Average offer rate	Men	64.0%	53.3%	81.7%	84.7%	86.2%	86.0%
	Women	58.5%	48.8%	69.8%	72.8%	74.1%	74.7%
Percentage point difference between offer rate and average offer rate	Men	-1.7	-2.5	-0.9	-0.6	-0.5	-0.4
	Women	1.5	2.0	0.8	0.5	0.4	0.3
Contribution of group to the average offer rate	Men	0.617	0.611	0.622	0.628	0.622	0.609
	Women	0.668	0.696	0.693	0.693	0.704	0.706

P.5 18 year old offer rate by sex

Note: The line for a group is not plotted when that group made fewer than 10 applications in any of the years from 2011-2016.

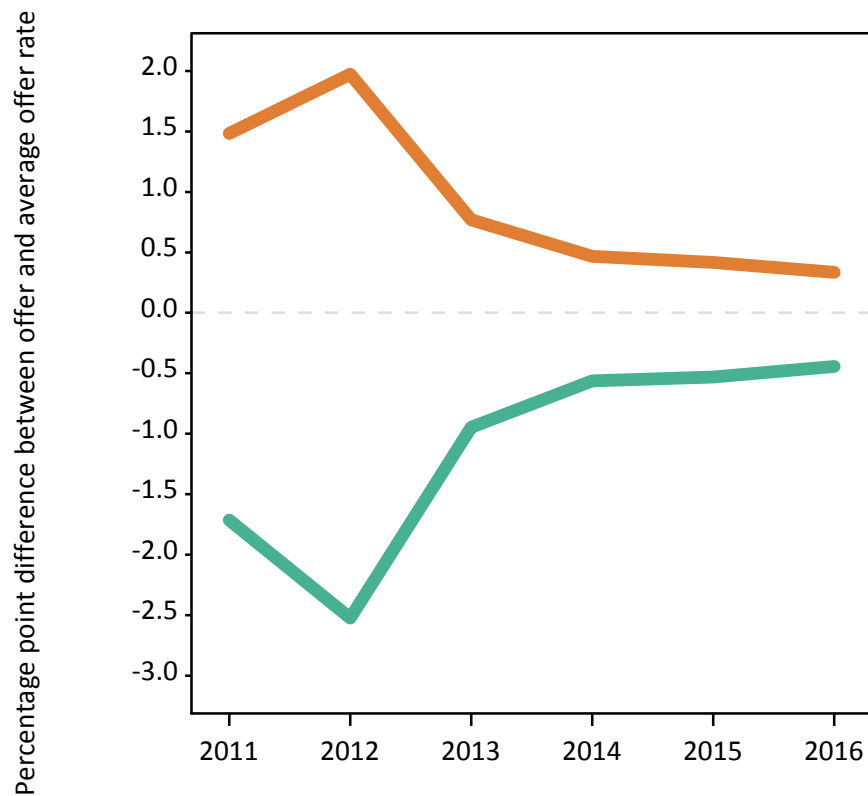
Men
Women



P.6 Percentage point difference between 18 year old offer rate and average offer rate by sex

Note: The line for a group is not plotted when that group made fewer than 50 applications in any of the years from 2011-2016.

Men
Women



P.7 18 year old applicants by POLAR3 quintile

Statistic	POLAR3 quintile	2011	2012	2013	2014	2015	2016
June deadline applicants	Quintile 1	3,000	2,975	2,360	2,740	2,520	2,560
	Quintile 2	3,865	3,660	2,995	3,135	2,965	2,975
	Quintile 3	4,190	3,910	3,125	3,395	3,020	3,015
	Quintile 4	4,545	3,985	3,165	3,345	2,990	2,965
	Quintile 5	5,400	4,750	3,615	3,605	3,210	3,190
Placed June deadline applicants	Quintile 1	465	330	390	495	575	545
	Quintile 2	625	445	480	550	670	615
	Quintile 3	730	485	520	575	655	620
	Quintile 4	805	520	555	625	660	615
	Quintile 5	1,115	645	630	690	775	720
All placed applicants	Quintile 1	490	400	520	620	660	645
	Quintile 2	650	545	670	705	780	715
	Quintile 3	755	585	705	740	790	715
	Quintile 4	835	640	755	800	770	745
	Quintile 5	1,150	785	905	955	910	835
June deadline applicants per 10,000 population	Quintile 1	208.6	208.8	169.2	196.8	180.0	189.5
	Quintile 2	257.2	244.0	203.1	214.2	199.6	205.9
	Quintile 3	272.3	253.3	204.8	225.7	196.6	200.7
	Quintile 4	290.3	251.3	202.4	217.1	191.0	192.0
	Quintile 5	326.2	282.8	218.6	221.1	191.7	193.2
Placed June deadline applicants per 10,000 population	Quintile 1	32.5	23.2	28.0	35.4	41.0	40.5
	Quintile 2	41.6	29.8	32.6	37.5	45.1	42.6
	Quintile 3	47.4	31.5	34.1	38.3	42.7	41.2
	Quintile 4	51.3	32.9	35.6	40.4	42.2	39.8
	Quintile 5	67.4	38.5	38.2	42.2	46.4	43.5
All placed applicants per 10,000 population	Quintile 1	34.0	28.1	37.4	44.4	47.0	47.6
	Quintile 2	43.2	36.5	45.3	48.2	52.6	49.3
	Quintile 3	49.0	37.8	46.2	49.1	51.5	47.6
	Quintile 4	53.2	40.5	48.2	51.9	49.1	48.3
	Quintile 5	69.5	46.7	54.8	58.4	54.4	50.5

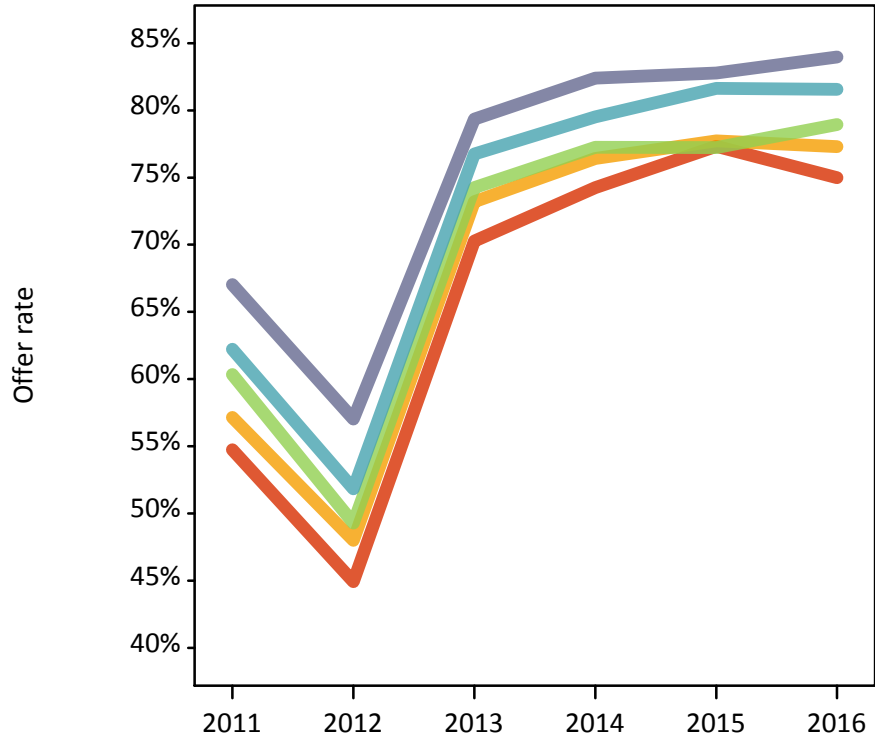
P.8 18 year old applications by POLAR3 quintile

Statistic	POLAR3 quintile	2011	2012	2013	2014	2015	2016
June deadline applications	Quintile 1	3,380	3,275	2,535	2,980	2,720	2,745
	Quintile 2	4,385	4,010	3,185	3,340	3,175	3,190
	Quintile 3	4,675	4,270	3,300	3,600	3,185	3,215
	Quintile 4	5,010	4,330	3,355	3,550	3,180	3,155
	Quintile 5	6,025	5,145	3,840	3,800	3,405	3,355
Offers	Quintile 1	1,850	1,470	1,785	2,210	2,105	2,060
	Quintile 2	2,505	1,925	2,335	2,555	2,465	2,465
	Quintile 3	2,820	2,105	2,450	2,785	2,460	2,540
	Quintile 4	3,115	2,245	2,575	2,825	2,595	2,575
	Quintile 5	4,040	2,935	3,050	3,135	2,820	2,815
Offer rate	Quintile 1	54.7%	44.9%	70.3%	74.3%	77.3%	75.0%
	Quintile 2	57.1%	48.0%	73.2%	76.4%	77.7%	77.3%
	Quintile 3	60.3%	49.3%	74.2%	77.3%	77.2%	78.9%
	Quintile 4	62.2%	51.8%	76.7%	79.5%	81.6%	81.6%
	Quintile 5	67.0%	57.0%	79.4%	82.4%	82.8%	84.0%
Average offer rate	Quintile 1	55.9%	46.1%	71.9%	75.7%	77.6%	76.9%
	Quintile 2	58.4%	48.5%	73.2%	75.9%	78.7%	77.9%
	Quintile 3	60.2%	49.9%	74.2%	77.4%	77.0%	78.6%
	Quintile 4	61.9%	51.9%	76.6%	79.2%	81.3%	80.8%
	Quintile 5	65.8%	55.2%	78.6%	81.9%	82.2%	82.9%
Percentage point difference between offer rate and average offer rate	Quintile 1	-1.2	-1.2	-1.6	-1.4	-0.3	-1.9
	Quintile 2	-1.3	-0.5	0.0	0.5	-1.0	-0.6
	Quintile 3	0.1	-0.7	0.1	-0.2	0.2	0.4
	Quintile 4	0.3	-0.1	0.2	0.4	0.4	0.7
	Quintile 5	1.2	1.8	0.8	0.5	0.6	1.1
Contribution of group to the average offer rate	Quintile 1	0.190	0.206	0.214	0.229	0.226	0.228
	Quintile 2	0.221	0.229	0.241	0.237	0.251	0.250
	Quintile 3	0.231	0.239	0.246	0.243	0.246	0.244
	Quintile 4	0.244	0.242	0.251	0.245	0.248	0.245
	Quintile 5	0.310	0.304	0.306	0.295	0.292	0.288

P.9 18 year old offer rate by POLAR3 quintile

Note: The line for a group is not plotted when that group made fewer than 10 applications in any of the years from 2011-2016.

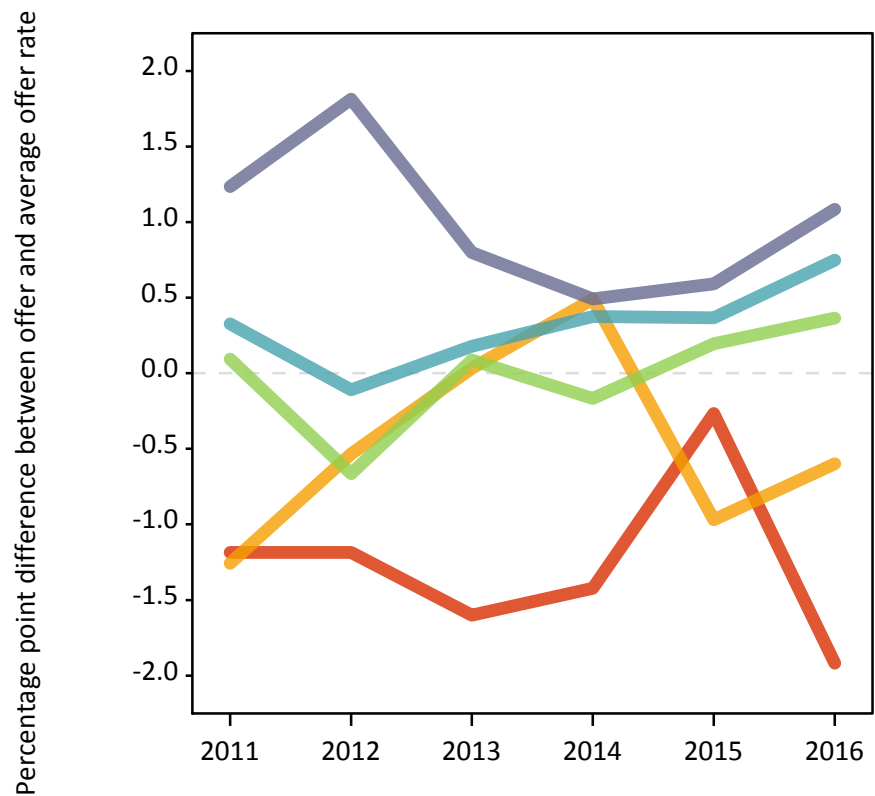
- Quintile 1
- Quintile 2
- Quintile 3
- Quintile 4
- Quintile 5



P.10 Percentage point difference between 18 year old offer rate and average offer rate by POLAR3 quintile

Note: The line for a group is not plotted when that group made fewer than 50 applications in any of the years from 2011-2016.

- Quintile 1
- Quintile 2
- Quintile 3
- Quintile 4
- Quintile 5



P.11 18 year old applicants by ethnic group

Statistic	Ethnic group	2011	2012	2013	2014	2015	2016
June deadline applicants	Asian	1,550	1,520	1,155	1,305	1,255	1,420
	Black	365	440	340	350	360	370
	Mixed	600	600	445	560	470	510
	White	18,440	16,640	13,235	13,945	12,535	12,370
	Other	45	70	65	70	65	70
Placed June deadline applicants	Asian	215	125	160	170	210	215
	Black	50	30	50	65	70	55
	Mixed	130	80	80	130	135	115
	White	3,345	2,195	2,280	2,555	2,900	2,720
	Other	5	5	10	10	10	15
All placed applicants	Asian	220	200	265	280	280	295
	Black	55	55	90	100	90	75
	Mixed	140	100	120	170	160	140
	White	3,460	2,600	3,055	3,255	3,360	3,130
	Other	5	10	20	15	15	25
June deadline applicants per 10,000 population	Asian	246.1	234.6	175.0	192.3	177.2	197.2
	Black	133.9	157.0	114.5	115.1	112.8	117.9
	Mixed	247.3	231.1	163.8	194.3	152.4	161.5
	White	284.8	257.7	210.3	226.0	201.2	204.5
	Other	56.8	81.4	72.8	74.1	69.5	72.5
Placed June deadline applicants per 10,000 population	Asian	34.0	19.0	24.0	24.9	29.7	29.9
	Black	18.3	11.0	17.5	21.8	22.6	17.6
	Mixed	53.7	30.3	29.2	44.5	43.8	37.2
	White	51.7	34.0	36.2	41.4	46.5	45.0
	Other	6.2	5.7	13.2	10.7	12.4	16.1
All placed applicants per 10,000 population	Asian	35.2	30.6	39.9	41.3	39.7	40.7
	Black	20.1	18.8	29.6	32.3	27.6	23.6
	Mixed	57.4	37.6	45.1	58.7	51.2	43.9
	White	53.4	40.3	48.6	52.7	53.9	51.8
	Other	8.6	9.0	22.1	14.0	14.5	23.2

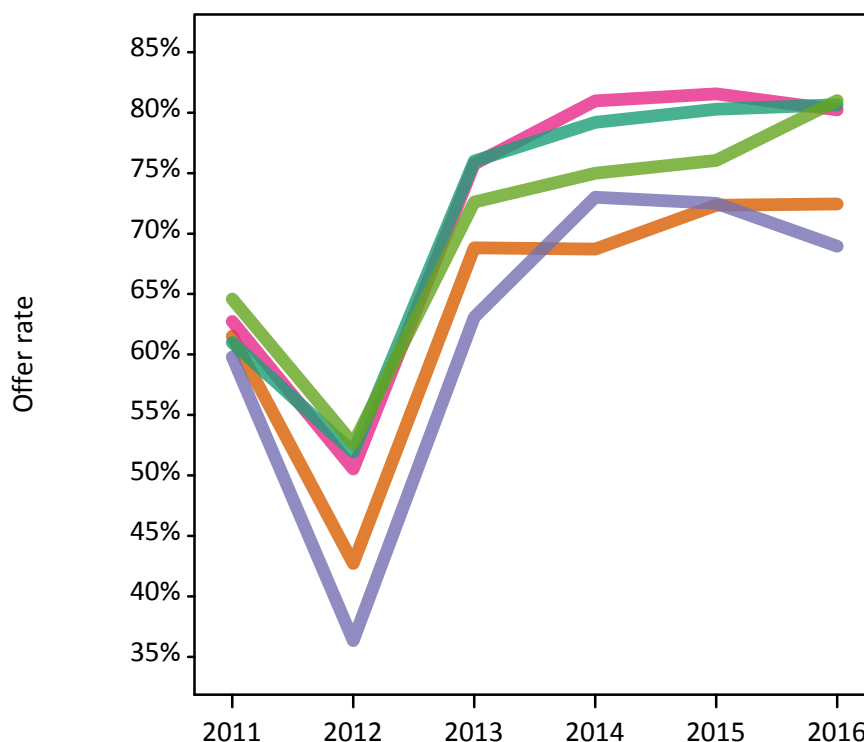
P.12 18 year old applications by ethnic group

Statistic	Ethnic group	2011	2012	2013	2014	2015	2016
June deadline applications	Asian	1,820	1,700	1,250	1,420	1,360	1,570
	Black	395	465	350	375	370	380
	Mixed	665	660	460	590	505	540
	White	20,545	18,130	14,075	14,820	13,335	13,120
	Other	50	75	75	75	70	80
Offers	Asian	1,120	725	860	975	985	1,140
	Black	235	170	220	275	270	260
	Mixed	415	335	345	475	410	435
	White	12,530	9,415	10,700	11,735	10,710	10,580
	Other	30	40	55	55	55	65
Offer rate	Asian	61.5%	42.7%	68.8%	68.7%	72.3%	72.5%
	Black	59.8%	36.3%	63.1%	73.0%	72.5%	68.9%
	Mixed	62.7%	50.5%	75.8%	81.0%	81.5%	80.2%
	White	61.0%	51.9%	76.0%	79.2%	80.3%	80.6%
	Other	64.6%	52.6%	72.6%	75.0%	76.1%	81.0%
Average offer rate	Asian	65.3%	46.6%	73.3%	72.8%	76.2%	75.5%
	Black	61.6%	47.6%	73.1%	76.6%	78.1%	76.1%
	Mixed	62.4%	52.7%	76.8%	81.6%	81.7%	81.0%
	White	60.6%	51.2%	75.3%	78.6%	79.7%	80.1%
	Other	65.5%	54.3%	80.3%	82.4%	79.0%	75.4%
Percentage point difference between offer rate and average offer rate	Asian	-3.8	-3.8	-4.4	-4.1	-3.9	-3.1
	Black	-1.8	-11.2	-10.0	-3.6	-5.6	-7.2
	Mixed	0.4	-2.1	-1.1	-0.7	-0.1	-0.8
	White	0.4	0.8	0.7	0.6	0.6	0.5
	Other	N/A	-1.7	-7.7	-7.4	-3.0	5.7
Contribution of group to the average offer rate	Asian	0.198	0.206	0.204	0.206	0.198	0.225
	Black	0.071	0.078	0.087	0.068	0.092	0.078
	Mixed	0.066	0.080	0.086	0.083	0.082	0.087
	White	0.888	0.877	0.884	0.872	0.867	0.854
	Other	0.046	0.048	0.063	0.069	0.081	0.080

P.13 18 year old offer rate by ethnic group

Note: The line for a group is not plotted when that group made fewer than 10 applications in any of the years from 2011-2016.

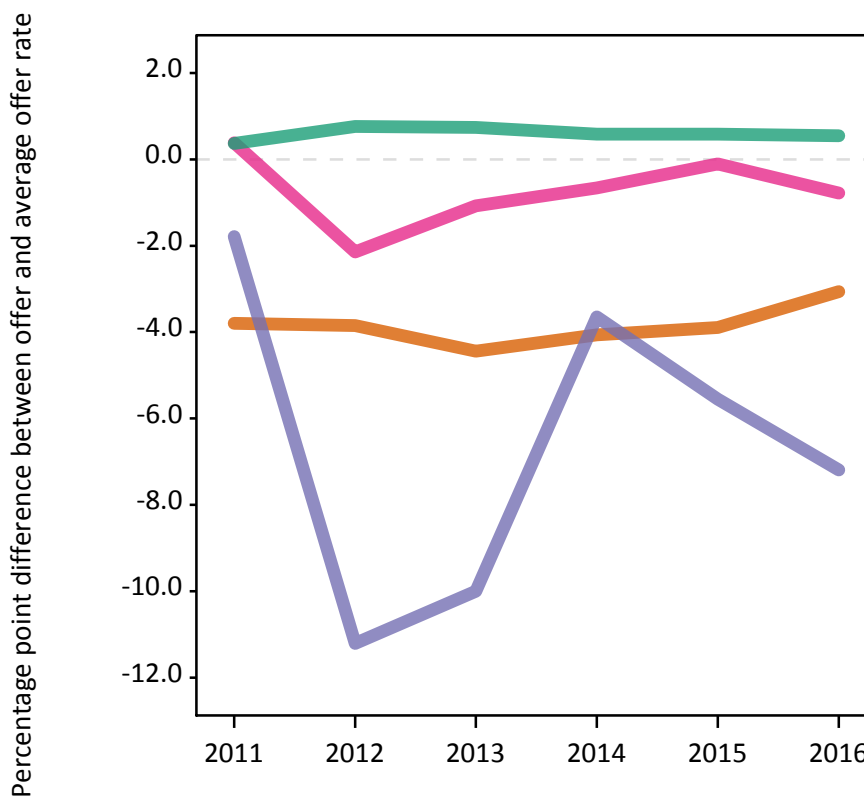
- Asian
- Black
- Mixed
- White
- Other



P.14 Percentage point difference between 18 year old offer rate and average offer rate by ethnic group

Note: The line for a group is not plotted when that group made fewer than 50 applications in any of the years from 2011-2016.

- Asian
- Black
- Mixed
- White
- Other



P.15 Applicants (all ages)

Statistic	2011	2012	2013	2014	2015	2016
June deadline applicants	39,070	34,005	28,075	28,990	25,600	25,280
Placed June deadline applicants	7,260	4,570	4,935	5,220	5,480	5,035
All placed applicants	7,555	5,810	6,855	6,995	6,715	6,120

P.16 Applications (all ages)

Statistic	2011	2012	2013	2014	2015	2016
June deadline applications	44,645	37,655	30,395	31,260	27,560	27,240
Offers	24,415	17,070	20,075	21,590	19,650	19,220
Offer rate	54.7%	45.3%	66.1%	69.1%	71.3%	70.5%

P.17 Applicants (all ages) by sex

Statistic	Sex	2011	2012	2013	2014	2015	2016
June deadline applicants	Men	18,790	15,635	13,045	13,570	11,540	11,100
	Women	20,280	18,370	15,030	15,425	14,060	14,180
Placed June deadline applicants	Men	3,890	2,295	2,615	2,705	2,800	2,420
	Women	3,365	2,275	2,315	2,515	2,680	2,615
All placed applicants	Men	4,025	2,985	3,685	3,675	3,430	2,965
	Women	3,535	2,825	3,170	3,320	3,285	3,155

P.18 Applications (all ages) by sex

Statistic	Sex	2011	2012	2013	2014	2015	2016
June deadline applications	Men	22,030	17,815	14,440	15,035	12,720	12,220
	Women	22,620	19,840	15,955	16,225	14,845	15,020
Offers	Men	12,490	8,275	10,320	11,245	9,955	9,445
	Women	11,930	8,800	9,760	10,345	9,695	9,775
Offer rate	Men	56.7%	46.4%	71.5%	74.8%	78.3%	77.3%
	Women	52.7%	44.3%	61.2%	63.8%	65.3%	65.1%

P.19 Applicants (all ages) by POLAR3 quintile

Statistic	POLAR3 quintile	2011	2012	2013	2014	2015	2016
June deadline applicants	Quintile 1	6,355	6,000	4,895	5,410	4,815	4,755
	Quintile 2	7,565	6,690	5,570	5,730	5,220	5,265
	Quintile 3	7,735	6,825	5,605	5,895	5,160	5,040
	Quintile 4	7,960	6,700	5,665	5,735	4,960	4,905
	Quintile 5	9,375	7,720	6,295	6,160	5,400	5,205
Placed June deadline applicants	Quintile 1	1,075	715	850	940	990	960
	Quintile 2	1,305	840	915	970	1,090	1,005
	Quintile 3	1,360	900	980	1,015	1,065	960
	Quintile 4	1,490	935	1,015	1,080	1,055	955
	Quintile 5	2,005	1,170	1,160	1,210	1,270	1,130
All placed applicants	Quintile 1	1,125	925	1,155	1,245	1,200	1,155
	Quintile 2	1,370	1,090	1,290	1,290	1,330	1,230
	Quintile 3	1,415	1,125	1,365	1,345	1,350	1,155
	Quintile 4	1,545	1,195	1,385	1,445	1,285	1,180
	Quintile 5	2,075	1,465	1,645	1,655	1,540	1,365

P.20 Applications (all ages) by POLAR3 quintile

Statistic	POLAR3 quintile	2011	2012	2013	2014	2015	2016
June deadline applications	Quintile 1	7,360	6,735	5,385	5,940	5,240	5,175
	Quintile 2	8,760	7,465	6,005	6,180	5,645	5,685
	Quintile 3	8,755	7,515	6,015	6,355	5,505	5,425
	Quintile 4	8,950	7,360	6,135	6,135	5,345	5,265
	Quintile 5	10,720	8,505	6,810	6,585	5,785	5,570
Offers	Quintile 1	3,525	2,630	3,195	3,725	3,465	3,355
	Quintile 2	4,475	3,145	3,760	4,095	3,910	3,845
	Quintile 3	4,730	3,270	4,005	4,365	3,870	3,815
	Quintile 4	5,100	3,515	4,250	4,405	3,995	3,885
	Quintile 5	6,540	4,470	4,840	4,955	4,380	4,225
Offer rate	Quintile 1	47.9%	39.1%	59.3%	62.7%	66.1%	64.8%
	Quintile 2	51.1%	42.1%	62.6%	66.2%	69.3%	67.7%
	Quintile 3	54.0%	43.5%	66.5%	68.7%	70.3%	70.3%
	Quintile 4	57.0%	47.8%	69.3%	71.8%	74.8%	73.8%
	Quintile 5	61.0%	52.5%	71.1%	75.3%	75.7%	75.9%

P.21 Applicants (all ages) by ethnic group

Statistic	Ethnic group	2011	2012	2013	2014	2015	2016
June deadline applicants	Asian	3,415	3,160	2,500	2,645	2,480	2,650
	Black	1,620	1,670	1,275	1,210	1,165	1,210
	Mixed	1,325	1,160	900	1,080	965	955
	White	32,410	27,675	23,095	23,785	20,695	20,175
	Other	180	230	190	195	185	185
Placed June deadline applicants	Asian	495	265	335	330	385	390
	Black	215	140	170	160	185	160
	Mixed	290	160	170	230	245	200
	White	6,210	3,965	4,195	4,450	4,600	4,240
	Other	30	20	40	30	40	35
All placed applicants	Asian	525	475	625	600	575	580
	Black	235	240	285	275	250	225
	Mixed	305	215	250	320	310	265
	White	6,430	4,790	5,585	5,715	5,490	4,970
	Other	35	40	65	50	55	55

P.22 Applications (all ages) by ethnic group

Statistic	Ethnic group	2011	2012	2013	2014	2015	2016
June deadline applications	Asian	4,060	3,575	2,740	2,885	2,710	2,940
	Black	1,865	1,850	1,385	1,325	1,250	1,285
	Mixed	1,505	1,290	970	1,170	1,050	1,025
	White	36,870	30,560	24,960	25,590	22,230	21,670
	Other	205	255	215	210	205	205
Offers	Asian	2,155	1,335	1,625	1,750	1,750	1,925
	Black	700	480	560	590	625	605
	Mixed	790	570	635	825	765	710
	White	20,585	14,540	17,045	18,260	16,295	15,765
	Other	110	95	140	125	130	140
Offer rate	Asian	53.1%	37.3%	59.3%	60.6%	64.6%	65.5%
	Black	37.5%	26.1%	40.4%	44.7%	50.1%	47.2%
	Mixed	52.4%	44.1%	65.6%	70.8%	72.9%	69.0%
	White	55.8%	47.6%	68.3%	71.3%	73.3%	72.8%
	Other	54.1%	37.8%	64.4%	58.8%	63.9%	68.9%

Technical Notes and Definitions

UCAS undergraduate scheme

Adjustment

Adjustment allows applicants who have met and exceeded the terms of their conditional firm offer to seek and find a place at another provider whilst keeping their place at their original firm choice provider.

Clearing

Clearing is a route for applicants that are not placed and holding no offers to find a place on courses with vacancies.

Cycle year

The UCAS application cycle which runs from September to October the following year. For example the 2016 cycle runs from September 2015 through to October 2016.

End of cycle

The point in the cycle to which the numbers in this report refer, and the point at which the cycle is closed such that no more applications or offers can be made, and no more applicants can be placed. Numbers reported at the end of cycle exclude information on a small number of applicants who cancelled during the cycle.

Extra

Applicants who are unsuccessful in obtaining an offer or decline all offers may be eligible to apply through Extra, where they can apply to one further course at a time. Extra operates from 25 February until early July. It provides applicants who are eligible the possibility of obtaining an offer before exam results are published and Clearing starts.

June 30 deadline

The deadline for main scheme applications. Applicants who apply after this date will go directly into Clearing.

Record of Prior Acceptance (RPA)

RPA is an acceptance route used when a provider informs UCAS of applicants it has accepted outside of the normal application process (e.g. individuals who have applied directly to the provider).

Reporting groups

Ethnic group

High level grouping of ethnic origin as declared by the applicant: 'White', 'Black', 'Asian', 'Mixed', 'Other', 'Unknown'. Applicants who declare themselves as 'Unknown' ethnic origin are not reported in these tables, but are included in the associated csv data file.

POLAR3 quintile

Developed by HEFCE, POLAR3 classifies small areas across the UK into five groups according to their level of young participation in Higher Education. Each of these groups represents around 20 per cent of young people and is ranked from Quintile 1 (areas with the lowest young participation rates, considered as the most disadvantaged) to Quintile 5 (highest young participation rates, considered most advantaged). POLAR3 is based on the participation rates of young people between 2005 and 2009 who entered Higher Education between 2005-06 and 2010-11, therefore is most suitable for applicants aged 19 and under. These groups are assigned using the postcode declared by the applicant at the time of their application. If a UK postcode is invalid, considered unsafe for measurement or there is no link to Census geography possible then the applicant is not assigned to a quintile. Applicants with no POLAR3 quintile are not reported.

Sex

Sex as declared by the applicant.

SIMD quintile

Scottish index of multiple deprivation (SIMD) for 2012 identifies small area concentrations of multiple deprivation across all of Scotland, providing a relative measure of deprivation amongst 6505 small areas (data zones) based on 7 socio-economic domains. These small areas are classified into five groups ranked from Quintile 1 (considered the most deprived) to Quintile 5 (considered least deprived), with equal populations in each quintile. Quintiles are assigned using the postcode declared by the applicant, applicants declaring invalid postcodes are classified as 'Not assigned' and are not reported.

SIMD is only defined for applicants domiciled in Scotland, therefore any applicants domiciled outside of Scotland cannot be assigned to an SIMD quintile and so are not reported for this measure.

SIMD is only reported for providers in Scotland. Application and entry rates by SIMD are reported in the 2016 End of Cycle Report and the 2016 cycle January deadline application rate report.

Statistics reported in the tables

All placed applicants

The number of applicants placed for entry into higher education at the provider through one of their choices, including any choices made through Extra, or via Adjustment, Clearing or RPA.

All placed applicants per 10,000 population

The number of total UK domiciled 18 year old placed applicants for entry into higher education at the provider divided by the number of UK 18 year olds in the population, multiplied by 10,000. This gives the number of 18 year olds, for every 10,000 in the population, that were placed at the provider through one of their choices, including any choices made through Extra, or via Adjustment, Clearing or RPA. It is an alternative way of expressing the entry rate to a provider. By referencing the underlying population this statistic shows how the number of placed applicants is changing in relation to the available pool of potential applicants and so gives the chance that somebody from the group will be placed at a provider.

This statistic is only reported for 18 year olds.

Average offer rate

The offer rate that you might expect if the predicted grades and subject choice of applicants were the only factors that influenced whether an applicant was made an offer by the provider. The average offer rate is calculated by dividing applicants according to their specific combination of grades (for A levels the best three predicted grades are used, for BTECs, International Baccalaureate and Scottish Highers and Advanced Highers, predicted grades along with any grades already achieved upon applying are used) and subject choice. For each combination the number of main scheme offers is divided by the number of main scheme applications, to give an overall offer rate. This is then multiplied by the number of applications made by the group for which the average offer rate is being calculated (for example POLAR3 quintile 1), to give an average number of offers for that group. These average number of offers are then added together across all combinations of predicted grade and subject and divided by the number of main scheme applications from the group to give the average offer rate.

The average offer rate does not attempt to control for any other factors that may play a part in the decision to make an offer, such as the subject of the qualifications studied, their relevance to a course, or the grade in each subject; higher numbers of A levels being studied; the exact profile of grades predicted; personal statements; teacher references; interviews; or any other criteria (such as work experience or portfolios) that may be part of the admissions decision.

This statistic is only reported for 18 year olds.

Contribution of group to the average offer rate

The way in which the average offer rate is defined means that the pattern of application and offers of a group (for example POLAR3 quintile 1) will always contribute, in part, to the average offer rate for that group. When this contribution is large, the average offer rate will mainly reflect the patterns for the group, meaning that the value of the average offer rate will be similar to the offer rate, the percentage point difference statistic will be small, and any real difference between the offer rate and what might be expected given the predicted grades and subject choices of the applicants will be difficult to detect.

Values of the contribution of group to the average offer rate range between 0 and 1. The closer the value is to 1 the greater the contribution a group makes to its own average offer rate.

This statistic is only reported for 18 year olds.

Placed June deadline applicants

An applicant who has been placed for entry into higher education at the provider through a June deadline application.

Placed June deadline applicants per 10,000 population

The number of UK domiciled 18 year old placed June deadline applicants at the provider divided by the number of UK 18 year olds in the population, multiplied by 10,000. This gives the number of 18 year olds, for every 10,000 in the population, that were placed at the provider through one of their June deadline applications. It is an alternative way of expressing the entry rate to a provider, but for placed June deadline applicants only. By referencing the underlying population this statistic shows how the number of placed June deadline applicants is changing in relation to the available pool of potential 18 year old applicants and so gives the chance that somebody from the group will be placed at a provider through a June deadline application.

This statistic is only reported for 18 year olds.

June deadline applications

An application (or choice) to a course in higher education to the provider that is made by the June 30 deadline. Each applicant can make up to five choices this way. The number of June deadline applications does not include choices made through the following routes: Clearing, Extra, Adjustment and RPAs. Applications made to October deadline courses received after the October deadline are not included in these statistics.

June deadline applicants

The number of applicants that made at least one application to the provider by the June 30 deadline.

June deadline applicants per 10,000 population

The number of UK domiciled 18 year old June deadline applicants to the provider divided by the number of UK 18 year olds in the population, multiplied by 10,000. This gives the number of 18 year olds, for every 10,000 in the population, who applied by the June 30 deadline. It is equivalent to the application rate. By referencing the underlying population this statistic shows how the number of June deadline applicants is changing in relation to the available pool of potential 18 year old applicants and so gives the chance that somebody from the group will apply to a provider by the June 30 deadline.

This statistic is only reported for 18 year olds.

Offers

An offer is defined as a provider's decision in response to an application to offer a place to an applicant, often subject to the applicant satisfying academic and/or other criteria, via a June deadline application (i.e. does not cover choices made through the following routes: Clearing, Extra, Adjustment and RPAs).

Offer rate

The number of offers made divided by the number of June deadline applications. This gives the proportion of all June deadline applications to the provider that received an offer.

Percentage point difference between offer rate and average offer rate

The offer rate minus the average offer rate.

The percentage point difference can be compared to the expected range of statistical variation resulting from the calculation of the average offer rate using the Average Offer Rate Lookup Table. Where the value of the percentage point difference lies outside of this range, the percentage point difference may be considered to represent a real difference between the offer rate and the average offer rate.

Other definitions

Age

This analysis uses country-specific age definitions that align with the cut off points for school and college cohorts within the different administrations of the UK. For England and Wales, ages are defined on the 31 August, for Northern Ireland on the 1 July and for Scotland on the 28 February the following year. Defining ages in this way matches the assignment of children to school cohorts. For applicants outside of the UK a cohort cut off of 31 August has been used.

Provider

A higher education provider - a university or college.

UK domiciled

Declared area of permanent residence within England, Northern Ireland, Scotland and Wales. Applicants from the Channel Islands and Isle of Man are not included.