

L46 Liverpool Hope University

Cycle years: 2011 - 2016

Cycle Reference Point: End of Cycle

Applicant coverage: UK domiciled

Reporting groups: Sex, POLAR3, ethnic group

Applicant statistics: June deadline applicants, placed June deadline applicants, all placed applicants, June deadline applicants per 10,000 population, placed June deadline applicants per 10,000 population, all placed applicants per 10,000 population

Application statistics: June deadline applications, offers, offer rate, average offer rate, percentage point difference between offer rate and average offer rate, contribution of group to the average offer rate

Non-disclosure controls: To avoid the disclosure of information about any individual the following measures are taken

- Applicants, placed applicants, applications and offers are rounded to the nearest 5.
- Applicants/placed applicants per 10,000 population figures are reported as 0 if the applicant/placed applicant figures are rounded to 0.
- All statistics related to the offer rate are not reported when the number of applications for a group is less than 10. The percentage point difference between the offer rate and the average offer rate is not reported when the number of applications for a group is less than 50.
- Offer rates are reported as 0% if there are fewer than 5 offers, and 100% if the number of offers is within 5 of the number of applications. When the offer rate is reported as 0% or 100%, it is reported in italics.

Contents:

18 year old applicants:	P.1
18 year old applications:	P.2
18 year old applicants by sex:	P.3
18 year old applications by sex:	P.4
18 year old applicants by POLAR3 quintile:	P.7
18 year old applications by POLAR3 quintile:	P.8
18 year old applicants by ethnic group:	P.11
18 year old applications by ethnic group:	P.12
Applicants (all ages):	P.15
Applications (all ages):	P.16
Applicants (all ages) by sex:	P.17
Applications (all ages) by sex:	P.18
Applicants (all ages) by POLAR3 quintile:	P.19
Applications (all ages) by POLAR3 quintile:	P.20
Applicants (all ages) by ethnic group:	P.21
Applications (all ages) by ethnic group:	P.22

P.1 18 year old applicants

Statistic	2011	2012	2013	2014	2015	2016
June deadline applicants	4,265	3,610	3,285	4,145	4,620	4,775
Placed June deadline applicants	780	615	545	625	695	670
All placed applicants	960	730	670	735	820	790
June deadline applicants per 10,000 population	55.4	46.6	43.2	55.0	60.3	63.7
Placed June deadline applicants per 10,000	10.1	8.0	7.2	8.3	9.1	9.0
All placed applicants per 10,000 population	12.4	9.5	8.8	9.7	10.7	10.5

P.2 18 year old applications

Statistic	2011	2012	2013	2014	2015	2016
June deadline applications	4,770	3,925	3,550	4,515	4,950	5,085
Offers	4,120	3,520	3,150	3,945	4,350	4,535
Offer rate	86.4%	89.7%	88.7%	87.4%	87.9%	89.2%

P.3 18 year old applicants by sex

Statistic	Sex	2011	2012	2013	2014	2015	2016
June deadline applicants	Men	1,335	1,210	1,010	1,310	1,365	1,405
	Women	2,930	2,400	2,275	2,835	3,260	3,370
Placed June deadline applicants	Men	190	185	140	180	170	165
	Women	595	430	410	450	525	505
All placed applicants	Men	245	215	170	210	205	205
	Women	710	515	500	525	610	585
June deadline applicants per 10,000 population	Men	33.9	30.5	25.9	33.9	34.7	36.5
	Women	77.9	63.7	61.4	77.4	87.2	92.2
Placed June deadline applicants per 10,000 population	Men	4.8	4.7	3.5	4.6	4.4	4.3
	Women	15.7	11.4	11.0	12.3	14.0	13.8
All placed applicants per 10,000 population	Men	6.3	5.5	4.3	5.4	5.3	5.4
	Women	18.9	13.7	13.5	14.3	16.3	16.0

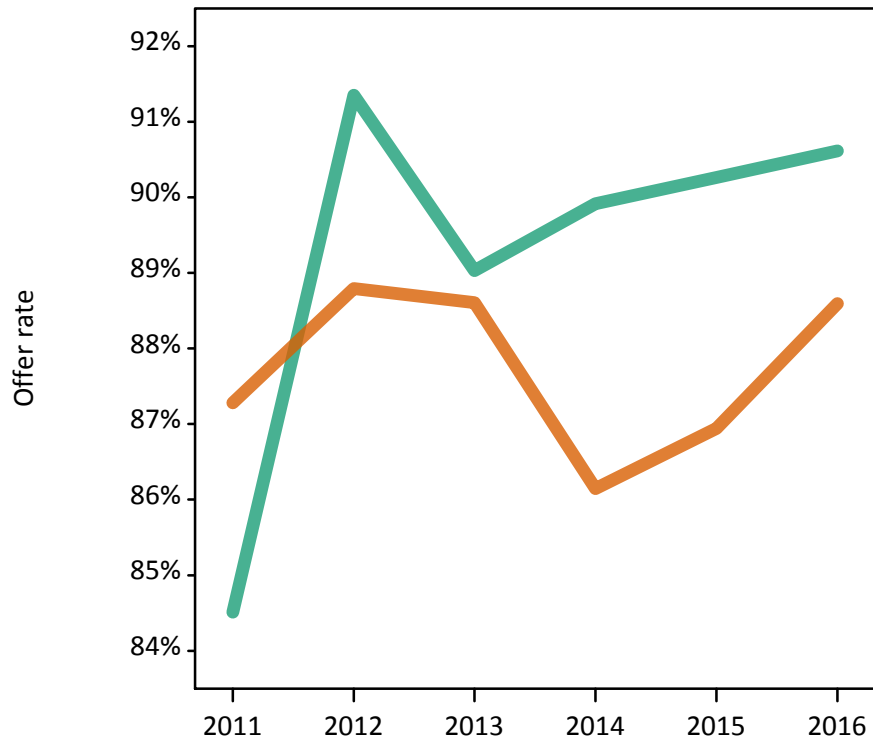
P.4 18 year old applications by sex

Statistic	Sex	2011	2012	2013	2014	2015	2016
June deadline applications	Men	1,460	1,330	1,105	1,450	1,450	1,490
	Women	3,310	2,595	2,450	3,070	3,500	3,595
Offers	Men	1,235	1,215	980	1,300	1,305	1,350
	Women	2,890	2,305	2,170	2,645	3,045	3,185
Offer rate	Men	84.5%	91.4%	89.0%	89.9%	90.3%	90.6%
	Women	87.3%	88.8%	88.6%	86.1%	86.9%	88.6%
Average offer rate	Men	85.7%	91.9%	89.6%	90.6%	91.2%	91.3%
	Women	86.8%	88.5%	88.3%	85.8%	86.6%	88.3%
Percentage point difference between offer rate and average offer rate	Men	-1.1	-0.6	-0.6	-0.7	-0.9	-0.7
	Women	0.5	0.3	0.3	0.3	0.4	0.3
Contribution of group to the average offer rate	Men	0.511	0.539	0.539	0.533	0.502	0.499
	Women	0.784	0.764	0.792	0.780	0.794	0.792

P.5 18 year old offer rate by sex

Note: The line for a group is not plotted when that group made fewer than 10 applications in any of the years from 2011-2016.

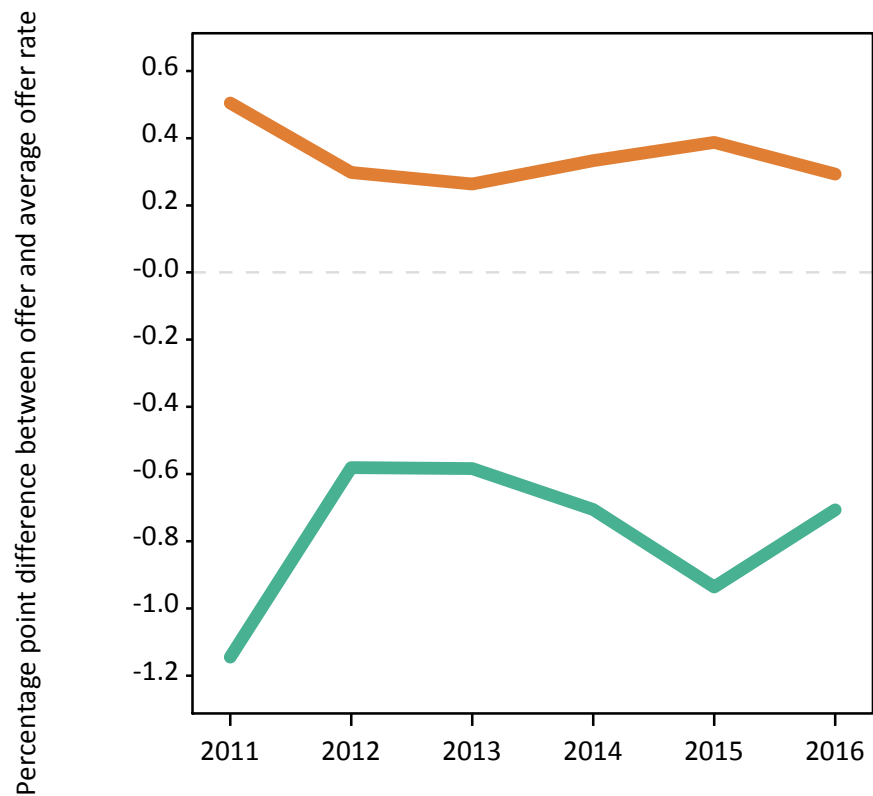
Men
Women



P.6 Percentage point difference between 18 year old offer rate and average offer rate by sex

Note: The line for a group is not plotted when that group made fewer than 50 applications in any of the years from 2011-2016.

Men
Women



P.7 18 year old applicants by POLAR3 quintile

Statistic	POLAR3 quintile	2011	2012	2013	2014	2015	2016
June deadline applicants	Quintile 1	775	670	615	880	960	905
	Quintile 2	840	750	715	815	995	975
	Quintile 3	770	680	575	730	815	870
	Quintile 4	1,005	825	715	915	950	1,040
	Quintile 5	865	680	660	805	890	960
Placed June deadline applicants	Quintile 1	165	120	105	125	165	115
	Quintile 2	155	155	120	130	140	160
	Quintile 3	140	100	95	115	110	105
	Quintile 4	180	125	125	140	145	155
	Quintile 5	145	110	100	115	135	130
All placed applicants	Quintile 1	190	145	125	145	185	140
	Quintile 2	190	180	140	160	170	180
	Quintile 3	170	120	115	130	120	120
	Quintile 4	220	160	150	160	175	185
	Quintile 5	185	125	135	135	160	160
June deadline applicants per 10,000 population	Quintile 1	54.1	47.1	44.1	63.2	68.4	67.0
	Quintile 2	55.8	50.0	48.5	55.7	66.9	67.4
	Quintile 3	50.2	44.0	37.7	48.4	53.2	58.0
	Quintile 4	64.2	51.9	45.7	59.2	60.8	67.3
	Quintile 5	52.2	40.5	39.9	49.3	53.3	58.1
Placed June deadline applicants per 10,000 population	Quintile 1	11.3	8.4	7.7	9.1	11.7	8.7
	Quintile 2	10.4	10.5	8.0	9.0	9.4	11.1
	Quintile 3	9.0	6.5	6.2	7.5	7.3	6.9
	Quintile 4	11.4	7.9	7.9	9.1	9.3	10.1
	Quintile 5	8.7	6.7	6.2	7.0	7.9	8.0
All placed applicants per 10,000 population	Quintile 1	13.3	10.1	9.0	10.4	13.3	10.4
	Quintile 2	12.7	12.1	9.6	11.1	11.6	12.4
	Quintile 3	11.0	7.7	7.5	8.5	7.9	8.0
	Quintile 4	14.0	10.1	9.5	10.4	11.3	11.9
	Quintile 5	11.2	7.6	8.1	8.4	9.6	9.7

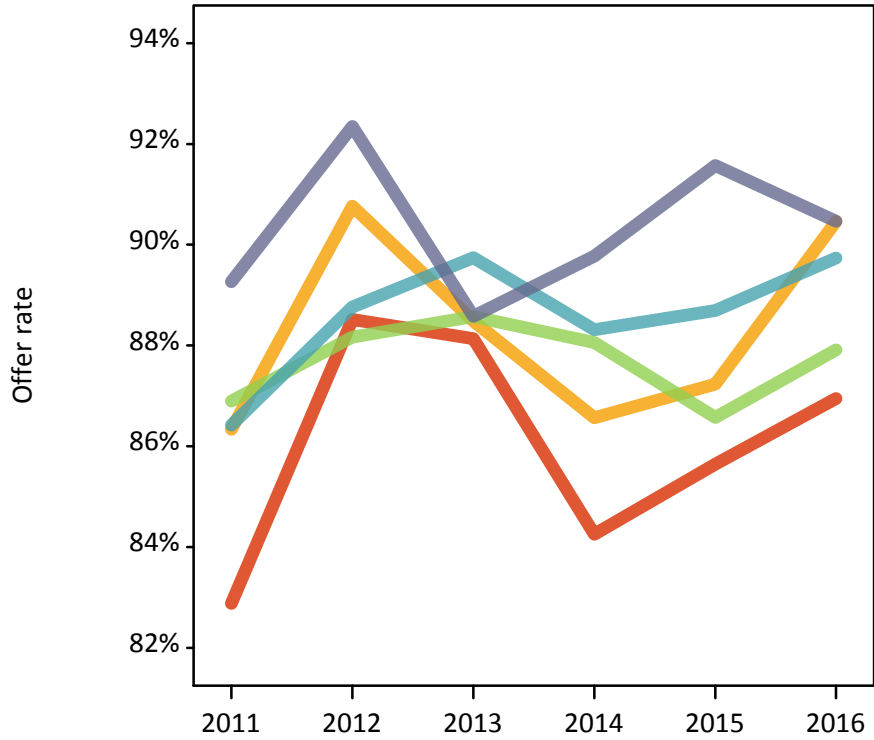
P.8 18 year old applications by POLAR3 quintile

Statistic	POLAR3 quintile	2011	2012	2013	2014	2015	2016
June deadline applications	Quintile 1	890	750	665	960	1,045	975
	Quintile 2	945	835	775	910	1,065	1,050
	Quintile 3	845	710	605	780	865	910
	Quintile 4	1,110	900	780	985	1,015	1,100
	Quintile 5	970	730	720	880	950	1,030
Offers	Quintile 1	735	665	585	810	895	845
	Quintile 2	815	755	685	785	930	950
	Quintile 3	735	625	535	685	750	800
	Quintile 4	960	800	700	870	900	990
	Quintile 5	865	675	635	790	870	930
Offer rate	Quintile 1	82.9%	88.5%	88.1%	84.3%	85.6%	86.9%
	Quintile 2	86.3%	90.8%	88.5%	86.6%	87.2%	90.5%
	Quintile 3	86.9%	88.2%	88.6%	88.1%	86.6%	87.9%
	Quintile 4	86.4%	88.8%	89.7%	88.3%	88.7%	89.7%
	Quintile 5	89.3%	92.3%	88.6%	89.8%	91.6%	90.5%
Average offer rate	Quintile 1	84.6%	89.0%	89.1%	86.1%	87.3%	87.8%
	Quintile 2	85.6%	89.8%	89.1%	87.0%	88.6%	89.1%
	Quintile 3	86.7%	89.9%	88.8%	87.4%	86.1%	89.3%
	Quintile 4	87.6%	89.4%	88.6%	87.7%	87.7%	89.9%
	Quintile 5	87.3%	90.5%	88.0%	88.5%	89.7%	89.7%
Percentage point difference between offer rate and average offer rate	Quintile 1	-1.7	-0.5	-1.0	-1.9	-1.7	-0.9
	Quintile 2	0.7	1.0	-0.7	-0.4	-1.3	1.4
	Quintile 3	0.2	-1.7	-0.2	0.6	0.5	-1.4
	Quintile 4	-1.1	-0.6	1.1	0.6	1.0	-0.1
	Quintile 5	2.0	1.8	0.6	1.3	1.8	0.8
Contribution of group to the average offer rate	Quintile 1	0.294	0.314	0.316	0.326	0.299	0.291
	Quintile 2	0.296	0.315	0.342	0.308	0.297	0.296
	Quintile 3	0.268	0.289	0.293	0.282	0.267	0.266
	Quintile 4	0.328	0.329	0.352	0.325	0.303	0.299
	Quintile 5	0.304	0.320	0.330	0.315	0.300	0.310

P.9 18 year old offer rate by POLAR3 quintile

Note: The line for a group is not plotted when that group made fewer than 10 applications in any of the years from 2011-2016.

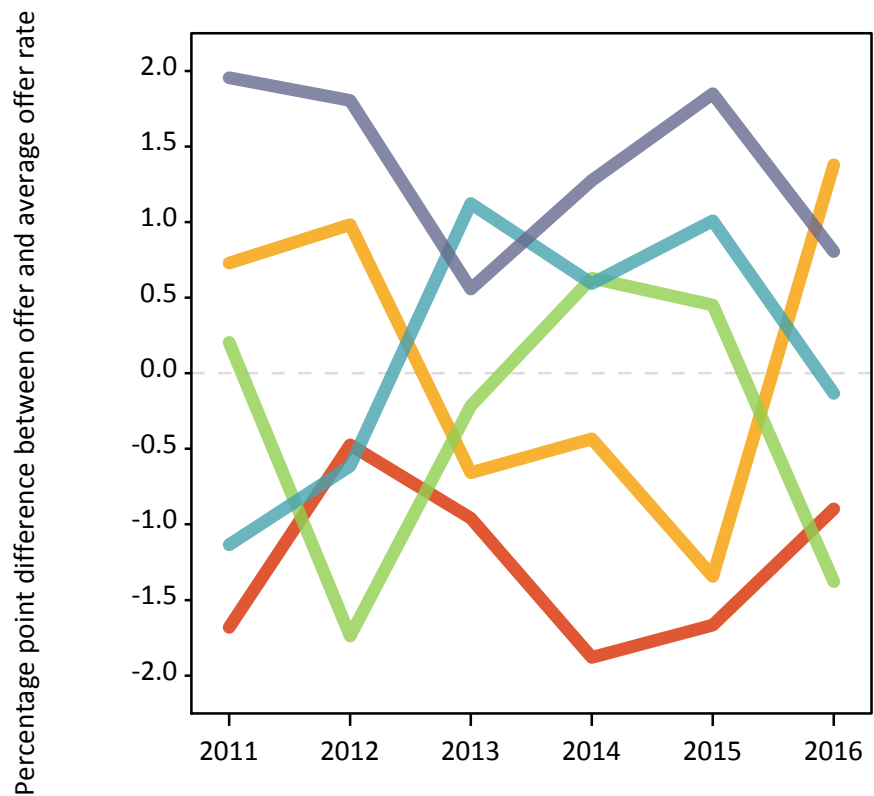
- Quintile 1
- Quintile 2
- Quintile 3
- Quintile 4
- Quintile 5



P.10 Percentage point difference between 18 year old offer rate and average offer rate by POLAR3 quintile

Note: The line for a group is not plotted when that group made fewer than 50 applications in any of the years from 2011-2016.

- Quintile 1
- Quintile 2
- Quintile 3
- Quintile 4
- Quintile 5



P.11 18 year old applicants by ethnic group

Statistic	Ethnic group	2011	2012	2013	2014	2015	2016
June deadline applicants	Asian	105	95	70	95	155	165
	Black	40	55	50	75	105	75
	Mixed	85	80	75	85	150	130
	White	4,015	3,360	3,075	3,870	4,180	4,360
	Other	15	10	15	15	20	25
Placed June deadline applicants	Asian	10	5	10	10	5	15
	Black	0	5	5	10	10	5
	Mixed	15	10	15	15	20	15
	White	755	590	515	595	655	640
	Other	0	0	0	0	0	0
All placed applicants	Asian	10	10	15	15	5	15
	Black	0	5	10	10	15	10
	Mixed	20	10	20	15	20	15
	White	920	700	620	690	775	745
	Other	0	0	0	0	0	0
June deadline applicants per 10,000 population	Asian	16.7	14.7	10.6	14.0	21.9	23.2
	Black	15.4	19.5	17.2	25.1	33.6	24.6
	Mixed	35.9	30.7	27.0	29.9	48.3	42.0
	White	62.0	52.0	48.9	62.7	67.1	72.1
	Other	16.0	11.3	18.7	14.0	21.8	23.2
Placed June deadline applicants per 10,000 population	Asian	1.3	1.1	1.5	1.6	0.4	1.8
	Black	0.0	1.8	2.0	2.6	3.8	1.9
	Mixed	5.4	3.5	5.9	4.5	5.8	4.1
	White	11.7	9.2	8.2	9.6	10.5	10.6
	Other	0.0	0.0	0.0	0.0	0.0	0.0
All placed applicants per 10,000 population	Asian	1.7	1.7	2.0	2.1	0.7	2.2
	Black	0.0	1.8	3.7	3.6	4.4	2.6
	Mixed	7.8	4.2	7.4	5.2	7.1	4.8
	White	14.2	10.8	9.9	11.2	12.4	12.3
	Other	0.0	0.0	0.0	0.0	0.0	0.0

P.12 18 year old applications by ethnic group

Statistic	Ethnic group	2011	2012	2013	2014	2015	2016
June deadline applications	Asian	110	95	75	100	160	180
	Black	45	55	50	75	110	80
	Mixed	90	85	80	90	155	135
	White	4,500	3,665	3,325	4,225	4,490	4,655
	Other	15	10	20	15	20	25
Offers	Asian	90	85	60	85	125	150
	Black	25	45	35	60	90	50
	Mixed	80	80	70	80	135	125
	White	3,905	3,290	2,975	3,705	3,980	4,180
	Other	15	10	15	15	15	20
Offer rate	Asian	81.8%	90.6%	79.7%	85.3%	77.5%	83.1%
	Black	60.5%	78.9%	70.6%	75.3%	81.1%	66.7%
	Mixed	87.0%	92.0%	85.2%	85.7%	85.3%	91.2%
	White	86.8%	89.8%	89.4%	87.7%	88.6%	89.8%
	Other	100.0%	100.0%	72.2%	100.0%	66.7%	80.8%
Average offer rate	Asian	89.2%	93.2%	88.3%	90.2%	88.4%	89.0%
	Black	75.5%	89.0%	85.6%	85.9%	89.1%	87.4%
	Mixed	83.3%	91.4%	86.8%	85.0%	87.4%	91.9%
	White	86.5%	89.5%	88.9%	87.3%	87.9%	89.1%
	Other	89.5%	95.1%	77.8%	90.0%	85.5%	88.7%
Percentage point difference between offer rate and average offer rate	Asian	-7.4	-2.6	-8.6	-4.9	-10.9	-5.8
	Black	N/A	-10.1	-15.1	-10.6	-8.0	-20.8
	Mixed	3.6	0.6	-1.6	0.7	-2.1	-0.8
	White	0.2	0.3	0.5	0.3	0.7	0.7
	Other	N/A	N/A	N/A	N/A	N/A	N/A
Contribution of group to the average offer rate	Asian	0.143	0.204	0.236	0.174	0.151	0.150
	Black	0.163	0.148	0.244	0.152	0.129	0.118
	Mixed	0.148	0.178	0.181	0.167	0.154	0.115
	White	0.951	0.944	0.950	0.945	0.921	0.925
	Other	0.085	0.084	0.237	0.075	0.273	0.115

P.13 18 year old offer rate by ethnic group

Note: The line for a group is not plotted when that group made fewer than 10 applications in any of the years from 2011-2016.

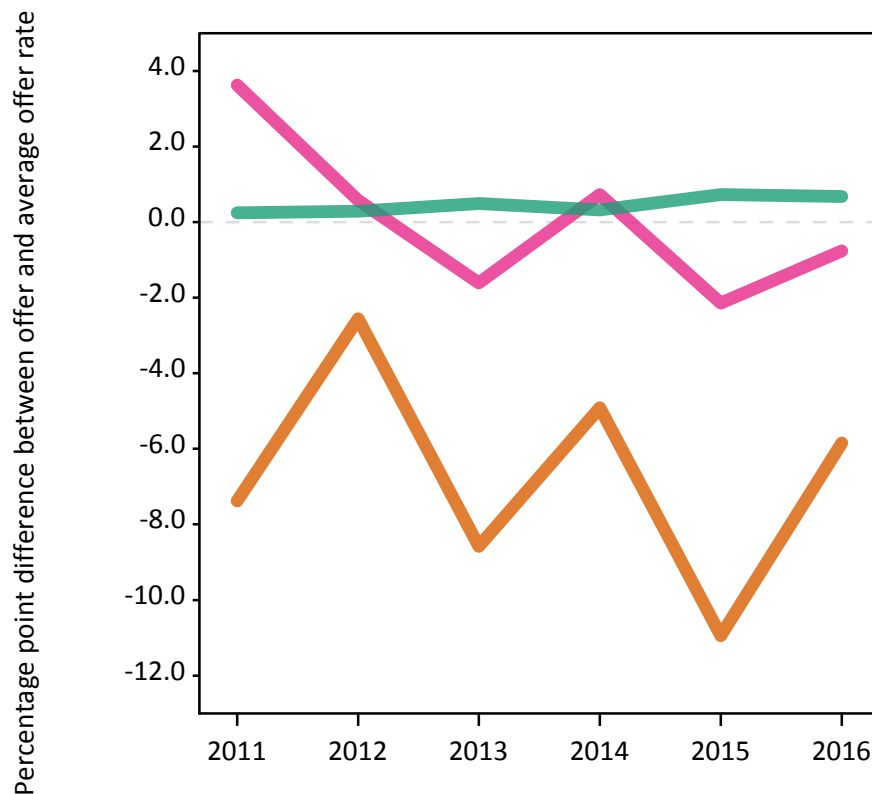
- Asian
- Black
- Mixed
- White
- Other



P.14 Percentage point difference between 18 year old offer rate and average offer rate by ethnic group

Note: The line for a group is not plotted when that group made fewer than 50 applications in any of the years from 2011-2016.

- Asian
- Black
- Mixed
- White
- Other



P.15 Applicants (all ages)

Statistic	2011	2012	2013	2014	2015	2016
June deadline applicants	7,955	6,545	5,965	7,295	7,610	7,880
Placed June deadline applicants	1,420	1,165	1,025	1,205	1,235	1,215
All placed applicants	1,710	1,440	1,330	1,445	1,525	1,450

P.16 Applications (all ages)

Statistic	2011	2012	2013	2014	2015	2016
June deadline applications	9,055	7,350	6,590	8,130	8,340	8,555
Offers	6,890	5,890	5,250	6,560	6,800	7,145
Offer rate	76.1%	80.2%	79.7%	80.7%	81.5%	83.5%

P.17 Applicants (all ages) by sex

Statistic	Sex	2011	2012	2013	2014	2015	2016
June deadline applicants	Men	2,785	2,350	1,970	2,475	2,490	2,525
	Women	5,170	4,195	3,990	4,820	5,120	5,360
Placed June deadline applicants	Men	410	380	280	380	355	330
	Women	1,005	785	745	820	885	880
All placed applicants	Men	505	475	405	470	460	425
	Women	1,210	965	925	975	1,065	1,025

P.18 Applications (all ages) by sex

Statistic	Sex	2011	2012	2013	2014	2015	2016
June deadline applications	Men	3,165	2,680	2,210	2,780	2,725	2,750
	Women	5,895	4,670	4,380	5,345	5,610	5,810
Offers	Men	2,330	2,200	1,760	2,315	2,270	2,305
	Women	4,560	3,690	3,490	4,245	4,530	4,835
Offer rate	Men	73.6%	82.2%	79.6%	83.1%	83.3%	84.0%
	Women	77.4%	79.0%	79.7%	79.4%	80.7%	83.3%

P.19 Applicants (all ages) by POLAR3 quintile

Statistic	POLAR3 quintile	2011	2012	2013	2014	2015	2016
June deadline applicants	Quintile 1	1,615	1,425	1,305	1,695	1,710	1,650
	Quintile 2	1,615	1,405	1,255	1,490	1,640	1,625
	Quintile 3	1,395	1,145	1,060	1,255	1,355	1,390
	Quintile 4	1,775	1,370	1,220	1,520	1,505	1,635
	Quintile 5	1,540	1,195	1,105	1,325	1,385	1,550
Placed June deadline applicants	Quintile 1	300	285	240	285	305	255
	Quintile 2	300	295	225	275	275	295
	Quintile 3	230	170	170	190	195	185
	Quintile 4	315	215	205	250	235	245
	Quintile 5	270	200	180	205	220	225
All placed applicants	Quintile 1	350	350	300	335	365	315
	Quintile 2	360	350	290	330	340	345
	Quintile 3	285	205	230	230	240	220
	Quintile 4	385	280	255	285	300	295
	Quintile 5	330	245	245	255	275	270

P.20 Applications (all ages) by POLAR3 quintile

Statistic	POLAR3 quintile	2011	2012	2013	2014	2015	2016
June deadline applications	Quintile 1	1,875	1,675	1,465	1,885	1,915	1,810
	Quintile 2	1,865	1,595	1,385	1,695	1,820	1,810
	Quintile 3	1,525	1,235	1,150	1,370	1,450	1,470
	Quintile 4	2,005	1,520	1,355	1,690	1,640	1,750
	Quintile 5	1,765	1,315	1,215	1,475	1,495	1,685
Offers	Quintile 1	1,330	1,290	1,140	1,465	1,490	1,470
	Quintile 2	1,425	1,290	1,110	1,390	1,485	1,520
	Quintile 3	1,165	975	910	1,085	1,170	1,210
	Quintile 4	1,560	1,240	1,085	1,375	1,370	1,475
	Quintile 5	1,395	1,095	995	1,235	1,275	1,445
Offer rate	Quintile 1	71.0%	76.9%	77.8%	77.9%	78.0%	81.0%
	Quintile 2	76.4%	80.9%	80.3%	81.8%	81.4%	84.0%
	Quintile 3	76.4%	78.8%	78.9%	79.2%	80.6%	82.2%
	Quintile 4	77.9%	81.7%	79.9%	81.5%	83.4%	84.4%
	Quintile 5	78.9%	83.2%	81.9%	83.5%	85.1%	85.8%

P.21 Applicants (all ages) by ethnic group

Statistic	Ethnic group	2011	2012	2013	2014	2015	2016
June deadline applicants	Asian	225	205	160	205	245	290
	Black	195	210	200	215	255	215
	Mixed	205	185	155	190	255	260
	White	7,275	5,895	5,390	6,625	6,785	7,025
	Other	35	30	45	50	45	60
Placed June deadline applicants	Asian	20	20	15	25	10	20
	Black	15	25	30	25	30	20
	Mixed	30	30	30	30	30	30
	White	1,345	1,085	945	1,115	1,155	1,135
	Other	5	5	5	5	5	5
All placed applicants	Asian	25	30	30	35	25	30
	Black	20	30	45	30	45	30
	Mixed	40	35	40	40	40	40
	White	1,610	1,325	1,200	1,325	1,405	1,330
	Other	5	10	5	10	5	10

P.22 Applications (all ages) by ethnic group

Statistic	Ethnic group	2011	2012	2013	2014	2015	2016
June deadline applications	Asian	235	210	165	220	255	305
	Black	205	225	205	225	265	240
	Mixed	235	215	175	210	275	275
	White	8,310	6,640	5,970	7,405	7,470	7,640
	Other	45	35	55	60	50	70
Offers	Asian	170	170	120	160	190	235
	Black	90	120	110	135	155	135
	Mixed	160	160	130	155	215	215
	White	6,415	5,400	4,835	6,060	6,190	6,485
	Other	35	30	40	40	35	50
Offer rate	Asian	71.7%	79.7%	73.3%	73.1%	73.7%	77.1%
	Black	43.4%	52.2%	53.1%	60.0%	57.7%	56.7%
	Mixed	69.5%	75.6%	74.4%	75.1%	78.8%	78.5%
	White	77.2%	81.3%	81.0%	81.8%	82.9%	84.9%
	Other	78.3%	85.3%	75.0%	67.2%	63.5%	72.1%

Technical Notes and Definitions

UCAS undergraduate scheme

Adjustment

Adjustment allows applicants who have met and exceeded the terms of their conditional firm offer to seek and find a place at another provider whilst keeping their place at their original firm choice provider.

Clearing

Clearing is a route for applicants that are not placed and holding no offers to find a place on courses with vacancies.

Cycle year

The UCAS application cycle which runs from September to October the following year. For example the 2016 cycle runs from September 2015 through to October 2016.

End of cycle

The point in the cycle to which the numbers in this report refer, and the point at which the cycle is closed such that no more applications or offers can be made, and no more applicants can be placed. Numbers reported at the end of cycle exclude information on a small number of applicants who cancelled during the cycle.

Extra

Applicants who are unsuccessful in obtaining an offer or decline all offers may be eligible to apply through Extra, where they can apply to one further course at a time. Extra operates from 25 February until early July. It provides applicants who are eligible the possibility of obtaining an offer before exam results are published and Clearing starts.

June 30 deadline

The deadline for main scheme applications. Applicants who apply after this date will go directly into Clearing.

Record of Prior Acceptance (RPA)

RPA is an acceptance route used when a provider informs UCAS of applicants it has accepted outside of the normal application process (e.g. individuals who have applied directly to the provider).

Reporting groups

Ethnic group

High level grouping of ethnic origin as declared by the applicant: 'White', 'Black', 'Asian', 'Mixed', 'Other', 'Unknown'. Applicants who declare themselves as 'Unknown' ethnic origin are not reported in these tables, but are included in the associated csv data file.

POLAR3 quintile

Developed by HEFCE, POLAR3 classifies small areas across the UK into five groups according to their level of young participation in Higher Education. Each of these groups represents around 20 per cent of young people and is ranked from Quintile 1 (areas with the lowest young participation rates, considered as the most disadvantaged) to Quintile 5 (highest young participation rates, considered most advantaged). POLAR3 is based on the participation rates of young people between 2005 and 2009 who entered Higher Education between 2005-06 and 2010-11, therefore is most suitable for applicants aged 19 and under. These groups are assigned using the postcode declared by the applicant at the time of their application. If a UK postcode is invalid, considered unsafe for measurement or there is no link to Census geography possible then the applicant is not assigned to a quintile. Applicants with no POLAR3 quintile are not reported.

Sex

Sex as declared by the applicant.

SIMD quintile

Scottish index of multiple deprivation (SIMD) for 2012 identifies small area concentrations of multiple deprivation across all of Scotland, providing a relative measure of deprivation amongst 6505 small areas (data zones) based on 7 socio-economic domains. These small areas are classified into five groups ranked from Quintile 1 (considered the most deprived) to Quintile 5 (considered least deprived), with equal populations in each quintile. Quintiles are assigned using the postcode declared by the applicant, applicants declaring invalid postcodes are classified as 'Not assigned' and are not reported.

SIMD is only defined for applicants domiciled in Scotland, therefore any applicants domiciled outside of Scotland cannot be assigned to an SIMD quintile and so are not reported for this measure.

SIMD is only reported for providers in Scotland. Application and entry rates by SIMD are reported in the 2016 End of Cycle Report and the 2016 cycle January deadline application rate report.

Statistics reported in the tables

All placed applicants

The number of applicants placed for entry into higher education at the provider through one of their choices, including any choices made through Extra, or via Adjustment, Clearing or RPA.

All placed applicants per 10,000 population

The number of total UK domiciled 18 year old placed applicants for entry into higher education at the provider divided by the number of UK 18 year olds in the population, multiplied by 10,000. This gives the number of 18 year olds, for every 10,000 in the population, that were placed at the provider through one of their choices, including any choices made through Extra, or via Adjustment, Clearing or RPA. It is an alternative way of expressing the entry rate to a provider. By referencing the underlying population this statistic shows how the number of placed applicants is changing in relation to the available pool of potential applicants and so gives the chance that somebody from the group will be placed at a provider.

This statistic is only reported for 18 year olds.

Average offer rate

The offer rate that you might expect if the predicted grades and subject choice of applicants were the only factors that influenced whether an applicant was made an offer by the provider. The average offer rate is calculated by dividing applicants according to their specific combination of grades (for A levels the best three predicted grades are used, for BTECs, International Baccalaureate and Scottish Highers and Advanced Highers, predicted grades along with any grades already achieved upon applying are used) and subject choice. For each combination the number of main scheme offers is divided by the number of main scheme applications, to give an overall offer rate. This is then multiplied by the number of applications made by the group for which the average offer rate is being calculated (for example POLAR3 quintile 1), to give an average number of offers for that group. These average number of offers are then added together across all combinations of predicted grade and subject and divided by the number of main scheme applications from the group to give the average offer rate.

The average offer rate does not attempt to control for any other factors that may play a part in the decision to make an offer, such as the subject of the qualifications studied, their relevance to a course, or the grade in each subject; higher numbers of A levels being studied; the exact profile of grades predicted; personal statements; teacher references; interviews; or any other criteria (such as work experience or portfolios) that may be part of the admissions decision.

This statistic is only reported for 18 year olds.

Contribution of group to the average offer rate

The way in which the average offer rate is defined means that the pattern of application and offers of a group (for example POLAR3 quintile 1) will always contribute, in part, to the average offer rate for that group. When this contribution is large, the average offer rate will mainly reflect the patterns for the group, meaning that the value of the average offer rate will be similar to the offer rate, the percentage point difference statistic will be small, and any real difference between the offer rate and what might be expected given the predicted grades and subject choices of the applicants will be difficult to detect.

Values of the contribution of group to the average offer rate range between 0 and 1. The closer the value is to 1 the greater the contribution a group makes to its own average offer rate.

This statistic is only reported for 18 year olds.

Placed June deadline applicants

An applicant who has been placed for entry into higher education at the provider through a June deadline application.

Placed June deadline applicants per 10,000 population

The number of UK domiciled 18 year old placed June deadline applicants at the provider divided by the number of UK 18 year olds in the population, multiplied by 10,000. This gives the number of 18 year olds, for every 10,000 in the population, that were placed at the provider through one of their June deadline applications. It is an alternative way of expressing the entry rate to a provider, but for placed June deadline applicants only. By referencing the underlying population this statistic shows how the number of placed June deadline applicants is changing in relation to the available pool of potential 18 year old applicants and so gives the chance that somebody from the group will be placed at a provider through a June deadline application.

This statistic is only reported for 18 year olds.

June deadline applications

An application (or choice) to a course in higher education to the provider that is made by the June 30 deadline. Each applicant can make up to five choices this way. The number of June deadline applications does not include choices made through the following routes: Clearing, Extra, Adjustment and RPAs. Applications made to October deadline courses received after the October deadline are not included in these statistics.

June deadline applicants

The number of applicants that made at least one application to the provider by the June 30 deadline.

June deadline applicants per 10,000 population

The number of UK domiciled 18 year old June deadline applicants to the provider divided by the number of UK 18 year olds in the population, multiplied by 10,000. This gives the number of 18 year olds, for every 10,000 in the population, who applied by the June 30 deadline. It is equivalent to the application rate. By referencing the underlying population this statistic shows how the number of June deadline applicants is changing in relation to the available pool of potential 18 year old applicants and so gives the chance that somebody from the group will apply to a provider by the June 30 deadline.

This statistic is only reported for 18 year olds.

Offers

An offer is defined as a provider's decision in response to an application to offer a place to an applicant, often subject to the applicant satisfying academic and/or other criteria, via a June deadline application (i.e. does not cover choices made through the following routes: Clearing, Extra, Adjustment and RPAs).

Offer rate

The number of offers made divided by the number of June deadline applications. This gives the proportion of all June deadline applications to the provider that received an offer.

Percentage point difference between offer rate and average offer rate

The offer rate minus the average offer rate.

The percentage point difference can be compared to the expected range of statistical variation resulting from the calculation of the average offer rate using the Average Offer Rate Lookup Table. Where the value of the percentage point difference lies outside of this range, the percentage point difference may be considered to represent a real difference between the offer rate and the average offer rate.

Other definitions

Age

This analysis uses country-specific age definitions that align with the cut off points for school and college cohorts within the different administrations of the UK. For England and Wales, ages are defined on the 31 August, for Northern Ireland on the 1 July and for Scotland on the 28 February the following year. Defining ages in this way matches the assignment of children to school cohorts. For applicants outside of the UK a cohort cut off of 31 August has been used.

Provider

A higher education provider - a university or college.

UK domiciled

Declared area of permanent residence within England, Northern Ireland, Scotland and Wales. Applicants from the Channel Islands and Isle of Man are not included.