

N84 The University of Nottingham

Cycle years: 2011 - 2016

Cycle Reference Point: End of Cycle

Applicant coverage: UK domiciled

Reporting groups: Sex, POLAR3, ethnic group

Applicant statistics: June deadline applicants, placed June deadline applicants, all placed applicants, June deadline applicants per 10,000 population, placed June deadline applicants per 10,000 population, all placed applicants per 10,000 population

Application statistics: June deadline applications, offers, offer rate, average offer rate, percentage point difference between offer rate and average offer rate, contribution of group to the average offer rate

Non-disclosure controls: To avoid the disclosure of information about any individual the following measures are taken

- Applicants, placed applicants, applications and offers are rounded to the nearest 5.
- Applicants/placed applicants per 10,000 population figures are reported as 0 if the applicant/placed applicant figures are rounded to 0.
- All statistics related to the offer rate are not reported when the number of applications for a group is less than 10. The percentage point difference between the offer rate and the average offer rate is not reported when the number of applications for a group is less than 50.
- Offer rates are reported as 0% if there are fewer than 5 offers, and 100% if the number of offers is within 5 of the number of applications. When the offer rate is reported as 0% or 100%, it is reported in italics.

Contents:

18 year old applicants:	P.1
18 year old applications:	P.2
18 year old applicants by sex:	P.3
18 year old applications by sex:	P.4
18 year old applicants by POLAR3 quintile:	P.7
18 year old applications by POLAR3 quintile:	P.8
18 year old applicants by ethnic group:	P.11
18 year old applications by ethnic group:	P.12
Applicants (all ages):	P.15
Applications (all ages):	P.16
Applicants (all ages) by sex:	P.17
Applications (all ages) by sex:	P.18
Applicants (all ages) by POLAR3 quintile:	P.19
Applications (all ages) by POLAR3 quintile:	P.20
Applicants (all ages) by ethnic group:	P.21
Applications (all ages) by ethnic group:	P.22

P.1 18 year old applicants

Statistic	2011	2012	2013	2014	2015	2016
June deadline applicants	26,825	28,645	27,580	25,100	25,900	27,805
Placed June deadline applicants	3,980	3,970	3,935	3,740	4,010	4,080
All placed applicants	4,050	4,220	4,195	3,905	4,485	4,550
June deadline applicants per 10,000 population	348.3	370.3	362.4	333.3	338.1	371.0
Placed June deadline applicants per 10,000	51.7	51.3	51.7	49.6	52.3	54.4
All placed applicants per 10,000 population	52.6	54.6	55.2	51.9	58.5	60.7

P.2 18 year old applications

Statistic	2011	2012	2013	2014	2015	2016
June deadline applications	27,980	29,680	28,490	25,885	26,665	28,570
Offers	19,020	20,650	20,965	20,045	20,940	22,585
Offer rate	68.0%	69.6%	73.6%	77.4%	78.5%	79.1%

P.3 18 year old applicants by sex

Statistic	Sex	2011	2012	2013	2014	2015	2016
June deadline applicants	Men	12,630	13,500	12,685	10,995	11,630	12,260
	Women	14,190	15,145	14,895	14,110	14,270	15,545
Placed June deadline applicants	Men	1,920	1,910	1,830	1,685	1,890	1,880
	Women	2,065	2,060	2,105	2,050	2,120	2,200
All placed applicants	Men	1,950	2,010	1,940	1,775	2,110	2,090
	Women	2,100	2,210	2,260	2,130	2,375	2,460
June deadline applicants per 10,000 population	Men	321.0	340.4	325.0	284.0	296.3	319.2
	Women	376.8	401.8	401.9	385.4	381.9	425.4
Placed June deadline applicants per 10,000 population	Men	48.7	48.1	46.9	43.6	48.1	48.9
	Women	54.8	54.7	56.8	56.1	56.7	60.2
All placed applicants per 10,000 population	Men	49.6	50.7	49.6	45.9	53.8	54.4
	Women	55.7	58.6	61.0	58.2	63.5	67.4

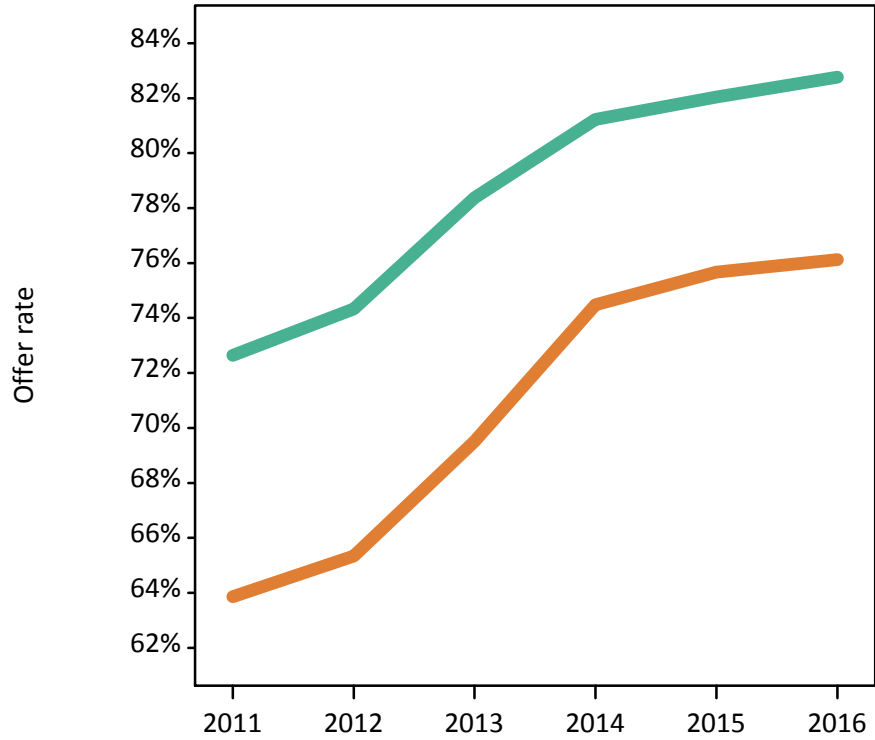
P.4 18 year old applications by sex

Statistic	Sex	2011	2012	2013	2014	2015	2016
June deadline applications	Men	13,115	13,960	13,105	11,325	11,970	12,605
	Women	14,870	15,720	15,380	14,560	14,695	15,965
Offers	Men	9,525	10,380	10,270	9,200	9,820	10,435
	Women	9,495	10,270	10,690	10,845	11,120	12,155
Offer rate	Men	72.6%	74.3%	78.4%	81.2%	82.0%	82.8%
	Women	63.9%	65.3%	69.5%	74.5%	75.7%	76.1%
Average offer rate	Men	73.2%	74.6%	78.7%	81.6%	82.5%	83.1%
	Women	63.4%	65.1%	69.3%	74.2%	75.3%	75.8%
Percentage point difference between offer rate and average offer rate	Men	-0.5	-0.3	-0.3	-0.3	-0.5	-0.4
	Women	0.5	0.3	0.2	0.3	0.4	0.3
Contribution of group to the average offer rate	Men	0.601	0.604	0.594	0.584	0.597	0.587
	Women	0.648	0.648	0.654	0.676	0.671	0.674

P.5 18 year old offer rate by sex

Note: The line for a group is not plotted when that group made fewer than 10 applications in any of the years from 2011-2016.

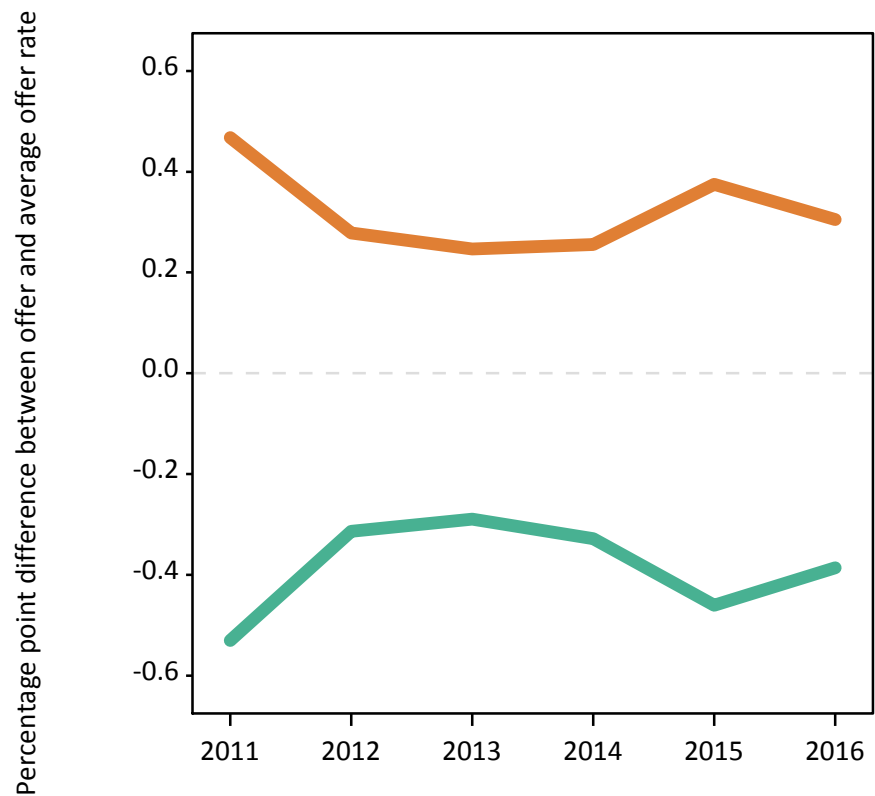
Men
Women



P.6 Percentage point difference between 18 year old offer rate and average offer rate by sex

Note: The line for a group is not plotted when that group made fewer than 50 applications in any of the years from 2011-2016.

Men
Women



P.7 18 year old applicants by POLAR3 quintile

Statistic	POLAR3 quintile	2011	2012	2013	2014	2015	2016
June deadline applicants	Quintile 1	1,765	1,735	1,695	1,790	1,820	2,010
	Quintile 2	2,800	3,160	3,045	2,895	3,070	3,245
	Quintile 3	4,150	4,530	4,340	4,125	4,220	4,425
	Quintile 4	6,235	6,690	6,400	5,635	5,870	6,365
	Quintile 5	11,825	12,485	12,065	10,615	10,865	11,665
Placed June deadline applicants	Quintile 1	245	195	220	225	230	260
	Quintile 2	365	405	440	430	450	485
	Quintile 3	560	615	595	605	595	660
	Quintile 4	935	920	890	840	910	910
	Quintile 5	1,870	1,830	1,785	1,640	1,815	1,755
All placed applicants	Quintile 1	250	205	235	235	250	285
	Quintile 2	370	435	460	440	480	535
	Quintile 3	570	650	630	630	660	745
	Quintile 4	950	975	940	880	1,015	995
	Quintile 5	1,905	1,950	1,930	1,715	2,055	1,975
June deadline applicants per 10,000 population	Quintile 1	122.9	121.8	121.6	128.7	129.8	148.7
	Quintile 2	186.2	210.8	206.7	198.0	206.7	224.3
	Quintile 3	269.6	293.2	284.5	274.0	274.7	294.4
	Quintile 4	398.1	421.7	409.3	365.7	375.0	412.4
	Quintile 5	714.4	743.3	729.6	650.8	649.0	706.2
Placed June deadline applicants per 10,000 population	Quintile 1	17.0	13.7	15.7	16.2	16.3	19.3
	Quintile 2	24.2	27.1	29.9	29.3	30.2	33.4
	Quintile 3	36.5	40.0	39.1	40.2	38.6	43.9
	Quintile 4	59.8	58.0	56.8	54.4	58.1	58.9
	Quintile 5	113.0	109.0	107.9	100.4	108.4	106.2
All placed applicants per 10,000 population	Quintile 1	17.4	14.5	16.8	16.9	17.9	21.1
	Quintile 2	24.7	29.1	31.2	30.0	32.4	36.9
	Quintile 3	37.0	42.1	41.2	42.0	43.0	49.7
	Quintile 4	60.6	61.4	60.2	57.2	65.0	64.5
	Quintile 5	115.0	116.1	116.7	105.2	122.9	119.6

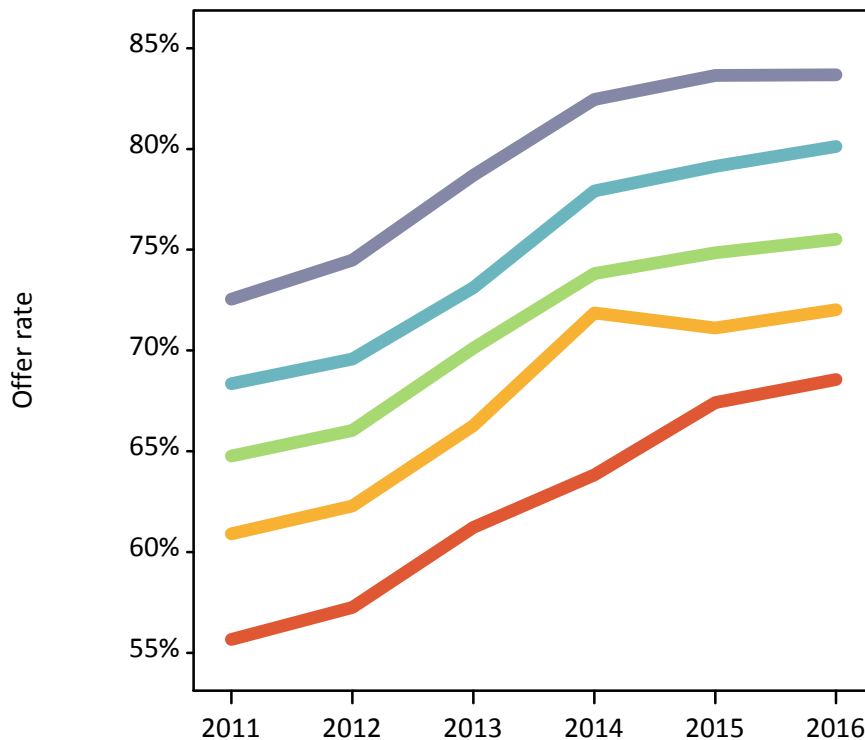
P.8 18 year old applications by POLAR3 quintile

Statistic	POLAR3 quintile	2011	2012	2013	2014	2015	2016
June deadline applications	Quintile 1	1,910	1,805	1,775	1,875	1,900	2,095
	Quintile 2	2,970	3,305	3,150	2,990	3,185	3,340
	Quintile 3	4,325	4,695	4,480	4,250	4,345	4,550
	Quintile 4	6,475	6,940	6,630	5,795	5,995	6,520
	Quintile 5	12,255	12,895	12,415	10,930	11,175	11,970
Offers	Quintile 1	1,065	1,035	1,085	1,200	1,280	1,435
	Quintile 2	1,810	2,060	2,085	2,150	2,265	2,405
	Quintile 3	2,800	3,100	3,140	3,135	3,255	3,435
	Quintile 4	4,425	4,825	4,850	4,515	4,745	5,225
	Quintile 5	8,890	9,605	9,770	9,015	9,345	10,020
Offer rate	Quintile 1	55.7%	57.3%	61.2%	63.8%	67.4%	68.6%
	Quintile 2	60.9%	62.3%	66.3%	71.9%	71.1%	72.0%
	Quintile 3	64.8%	66.0%	70.1%	73.8%	74.9%	75.5%
	Quintile 4	68.3%	69.6%	73.1%	77.9%	79.1%	80.1%
	Quintile 5	72.5%	74.5%	78.7%	82.5%	83.6%	83.7%
Average offer rate	Quintile 1	57.7%	60.0%	62.6%	66.1%	69.1%	70.1%
	Quintile 2	62.4%	62.7%	66.9%	72.4%	72.6%	73.4%
	Quintile 3	65.9%	66.3%	70.9%	74.6%	75.5%	76.3%
	Quintile 4	68.5%	70.1%	73.3%	77.2%	79.0%	79.9%
	Quintile 5	71.4%	73.6%	77.9%	82.0%	82.8%	82.8%
Percentage point difference between offer rate and average offer rate	Quintile 1	-2.1	-2.7	-1.4	-2.3	-1.7	-1.6
	Quintile 2	-1.5	-0.5	-0.6	-0.5	-1.5	-1.4
	Quintile 3	-1.1	-0.2	-0.7	-0.8	-0.6	-0.8
	Quintile 4	-0.1	-0.5	-0.2	0.8	0.2	0.2
	Quintile 5	1.2	0.8	0.7	0.4	0.9	0.9
Contribution of group to the average offer rate	Quintile 1	0.146	0.129	0.131	0.155	0.143	0.141
	Quintile 2	0.165	0.164	0.165	0.171	0.176	0.175
	Quintile 3	0.199	0.202	0.197	0.213	0.210	0.203
	Quintile 4	0.266	0.267	0.268	0.260	0.259	0.261
	Quintile 5	0.486	0.480	0.482	0.476	0.472	0.468

P.9 18 year old offer rate by POLAR3 quintile

Note: The line for a group is not plotted when that group made fewer than 10 applications in any of the years from 2011-2016.

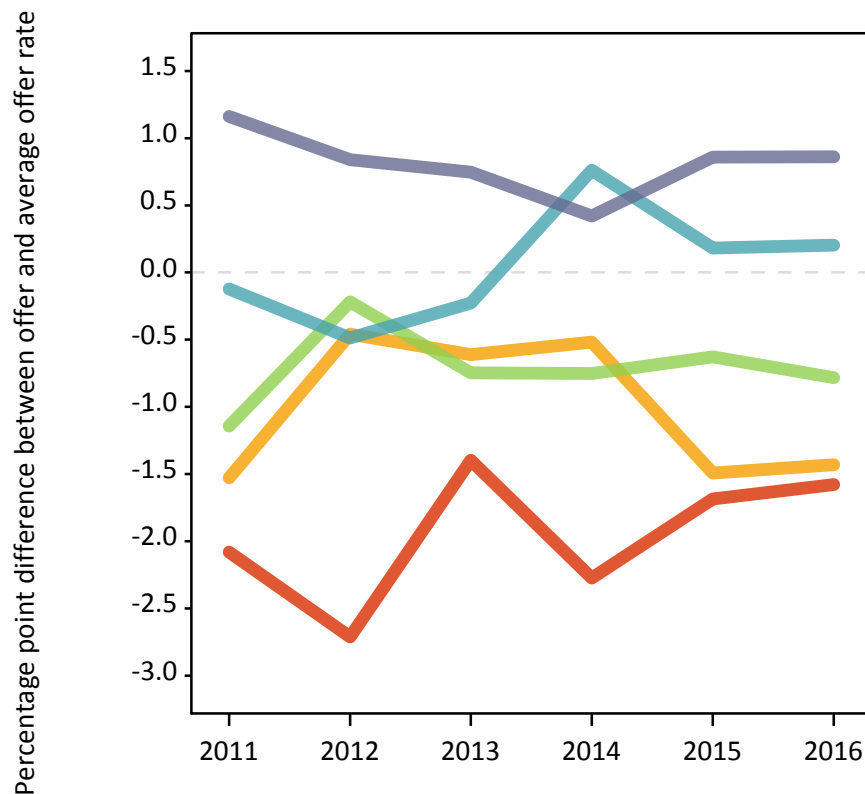
- Quintile 1
- Quintile 2
- Quintile 3
- Quintile 4
- Quintile 5



P.10 Percentage point difference between 18 year old offer rate and average offer rate by POLAR3 quintile

Note: The line for a group is not plotted when that group made fewer than 50 applications in any of the years from 2011-2016.

- Quintile 1
- Quintile 2
- Quintile 3
- Quintile 4
- Quintile 5



P.11 18 year old applicants by ethnic group

Statistic	Ethnic group	2011	2012	2013	2014	2015	2016
June deadline applicants	Asian	2,780	3,105	3,105	2,795	3,130	3,300
	Black	835	1,020	1,105	1,190	1,260	1,520
	Mixed	1,045	1,155	1,160	1,025	1,195	1,275
	White	21,785	22,930	21,835	19,720	19,885	21,195
	Other	205	235	240	255	270	310
Placed June deadline applicants	Asian	350	370	380	335	410	385
	Black	100	115	140	160	150	215
	Mixed	150	170	160	165	185	195
	White	3,330	3,270	3,200	3,035	3,220	3,220
	Other	30	25	30	30	25	25
All placed applicants	Asian	360	405	420	365	505	485
	Black	105	140	170	175	180	255
	Mixed	150	185	175	175	200	230
	White	3,375	3,435	3,380	3,145	3,545	3,510
	Other	30	30	30	35	35	30
June deadline applicants per 10,000 population	Asian	440.8	479.8	470.9	411.8	442.5	458.8
	Black	305.8	362.6	371.8	392.6	395.8	485.4
	Mixed	432.3	443.4	428.7	356.3	387.5	405.6
	White	336.5	355.1	347.0	319.7	319.2	350.4
	Other	251.9	266.7	264.7	271.8	279.1	312.2
Placed June deadline applicants per 10,000 population	Asian	55.2	56.8	57.8	49.4	58.1	53.4
	Black	36.2	40.1	47.8	52.5	47.1	68.4
	Mixed	61.9	65.3	59.5	56.7	59.3	62.6
	White	51.4	50.6	50.9	49.2	51.7	53.2
	Other	35.8	27.1	32.0	33.3	27.0	24.2
All placed applicants per 10,000 population	Asian	56.8	62.2	64.0	54.0	71.4	67.4
	Black	39.1	49.4	57.3	57.1	56.9	82.1
	Mixed	62.8	70.6	64.0	60.5	64.2	72.8
	White	52.1	53.2	53.7	50.9	56.9	58.0
	Other	35.8	33.9	32.0	37.6	34.2	29.2

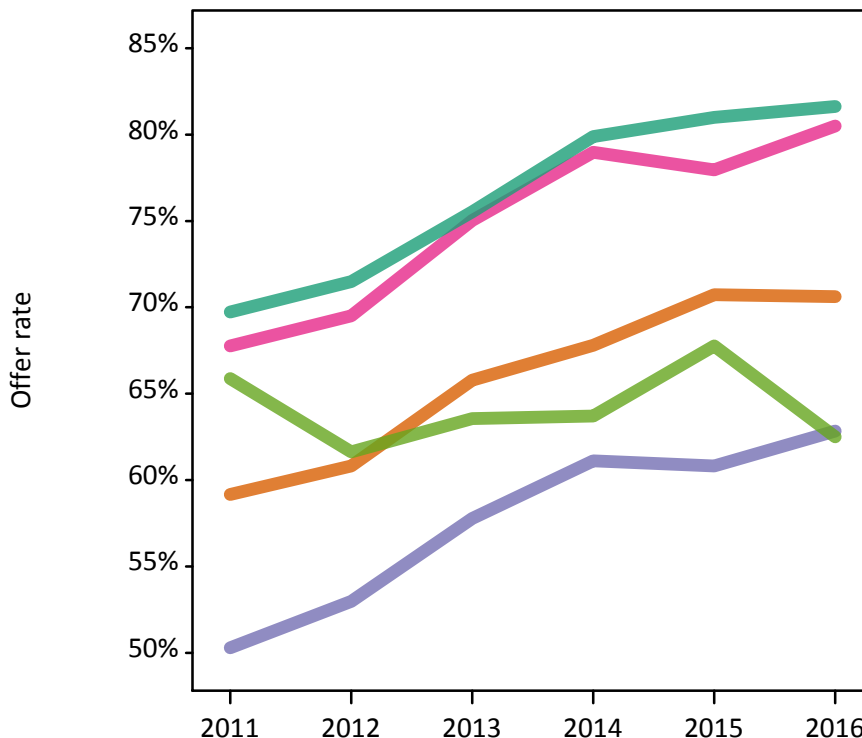
P.12 18 year old applications by ethnic group

Statistic	Ethnic group	2011	2012	2013	2014	2015	2016
June deadline applications	Asian	2,865	3,170	3,175	2,870	3,190	3,360
	Black	855	1,045	1,125	1,215	1,275	1,545
	Mixed	1,090	1,175	1,195	1,045	1,225	1,300
	White	22,785	23,845	22,605	20,375	20,535	21,840
	Other	210	245	245	260	275	310
Offers	Asian	1,695	1,930	2,090	1,945	2,255	2,375
	Black	430	555	650	740	775	970
	Mixed	740	820	895	825	955	1,050
	White	15,890	17,045	17,070	16,275	16,630	17,825
	Other	140	150	155	165	185	195
Offer rate	Asian	59.2%	60.8%	65.8%	67.8%	70.7%	70.6%
	Black	50.3%	53.0%	57.8%	61.1%	60.8%	62.8%
	Mixed	67.8%	69.5%	75.0%	79.0%	78.0%	80.5%
	White	69.7%	71.5%	75.5%	79.9%	81.0%	81.6%
	Other	65.9%	61.6%	63.6%	63.7%	67.8%	62.5%
Average offer rate	Asian	60.3%	61.1%	65.9%	68.8%	71.0%	71.4%
	Black	54.0%	55.8%	59.0%	62.8%	63.7%	65.2%
	Mixed	67.8%	68.5%	74.6%	78.1%	78.8%	80.2%
	White	69.4%	71.4%	75.4%	79.6%	80.7%	81.3%
	Other	67.2%	63.6%	66.0%	67.3%	68.4%	68.6%
Percentage point difference between offer rate and average offer rate	Asian	-1.1	-0.3	-0.1	-1.0	-0.2	-0.8
	Black	-3.7	-2.8	-1.2	-1.7	-2.8	-2.4
	Mixed	-0.0	1.0	0.4	0.9	-0.9	0.3
	White	0.3	0.1	0.1	0.2	0.3	0.3
	Other	-1.4	-2.0	-2.4	-3.6	-0.6	-6.1
Contribution of group to the average offer rate	Asian	0.223	0.212	0.214	0.217	0.224	0.217
	Black	0.112	0.122	0.132	0.155	0.140	0.147
	Mixed	0.091	0.088	0.089	0.088	0.089	0.089
	White	0.839	0.829	0.822	0.819	0.802	0.798
	Other	0.054	0.059	0.063	0.076	0.071	0.081

P.13 18 year old offer rate by ethnic group

Note: The line for a group is not plotted when that group made fewer than 10 applications in any of the years from 2011-2016.

- Asian
- Black
- Mixed
- White
- Other



P.14 Percentage point difference between 18 year old offer rate and average offer rate by ethnic group

Note: The line for a group is not plotted when that group made fewer than 50 applications in any of the years from 2011-2016.

- Asian
- Black
- Mixed
- White
- Other



P.15 Applicants (all ages)

Statistic	2011	2012	2013	2014	2015	2016
June deadline applicants	40,175	40,575	39,850	37,855	38,870	40,935
Placed June deadline applicants	5,835	5,425	5,330	5,385	5,725	5,775
All placed applicants	5,975	5,810	5,805	5,705	6,480	6,450

P.16 Applications (all ages)

Statistic	2011	2012	2013	2014	2015	2016
June deadline applications	43,000	42,775	41,670	39,590	40,295	42,395
Offers	24,390	25,410	26,005	25,765	26,695	28,960
Offer rate	56.7%	59.4%	62.4%	65.1%	66.3%	68.3%

P.17 Applicants (all ages) by sex

Statistic	Sex	2011	2012	2013	2014	2015	2016
June deadline applicants	Men	18,180	18,285	17,740	16,060	16,990	17,825
	Women	21,995	22,290	22,110	21,800	21,885	23,110
Placed June deadline applicants	Men	2,735	2,530	2,440	2,360	2,595	2,575
	Women	3,100	2,895	2,895	3,025	3,130	3,200
All placed applicants	Men	2,795	2,675	2,615	2,500	2,935	2,870
	Women	3,180	3,135	3,190	3,205	3,545	3,580

P.18 Applications (all ages) by sex

Statistic	Sex	2011	2012	2013	2014	2015	2016
June deadline applications	Men	19,100	19,045	18,385	16,690	17,550	18,415
	Women	23,900	23,735	23,285	22,900	22,745	23,980
Offers	Men	12,255	12,785	12,830	11,940	12,600	13,565
	Women	12,130	12,625	13,175	13,825	14,095	15,395
Offer rate	Men	64.2%	67.1%	69.8%	71.5%	71.8%	73.7%
	Women	50.8%	53.2%	56.6%	60.4%	62.0%	64.2%

P.19 Applicants (all ages) by POLAR3 quintile

Statistic	POLAR3 quintile	2011	2012	2013	2014	2015	2016
June deadline applicants	Quintile 1	3,620	3,445	3,365	3,690	3,720	3,950
	Quintile 2	4,920	5,055	5,075	5,115	5,300	5,440
	Quintile 3	6,495	6,600	6,560	6,420	6,565	6,840
	Quintile 4	8,945	9,180	8,985	8,260	8,455	9,025
	Quintile 5	16,080	16,220	15,795	14,300	14,730	15,510
Placed June deadline applicants	Quintile 1	485	385	405	445	475	485
	Quintile 2	620	615	655	710	710	780
	Quintile 3	850	835	840	865	880	970
	Quintile 4	1,315	1,215	1,190	1,180	1,245	1,240
	Quintile 5	2,550	2,370	2,240	2,170	2,395	2,280
All placed applicants	Quintile 1	500	420	450	480	535	525
	Quintile 2	640	665	700	745	785	865
	Quintile 3	875	885	910	915	995	1,105
	Quintile 4	1,340	1,305	1,285	1,250	1,405	1,360
	Quintile 5	2,610	2,530	2,455	2,305	2,735	2,570

P.20 Applications (all ages) by POLAR3 quintile

Statistic	POLAR3 quintile	2011	2012	2013	2014	2015	2016
June deadline applications	Quintile 1	4,205	3,815	3,670	4,010	3,935	4,180
	Quintile 2	5,460	5,440	5,375	5,395	5,560	5,685
	Quintile 3	6,940	6,960	6,880	6,725	6,805	7,090
	Quintile 4	9,480	9,610	9,370	8,570	8,675	9,285
	Quintile 5	16,805	16,865	16,305	14,810	15,210	15,975
Offers	Quintile 1	1,575	1,490	1,555	1,785	1,865	2,130
	Quintile 2	2,490	2,625	2,765	2,925	3,025	3,320
	Quintile 3	3,625	3,825	3,975	4,100	4,195	4,515
	Quintile 4	5,585	5,885	5,980	5,775	5,970	6,580
	Quintile 5	11,060	11,540	11,685	11,135	11,575	12,315
Offer rate	Quintile 1	37.5%	39.0%	42.4%	44.5%	47.4%	51.0%
	Quintile 2	45.6%	48.3%	51.4%	54.2%	54.4%	58.4%
	Quintile 3	52.2%	55.0%	57.8%	61.0%	61.6%	63.7%
	Quintile 4	58.9%	61.2%	63.8%	67.4%	68.8%	70.9%
	Quintile 5	65.8%	68.4%	71.7%	75.2%	76.1%	77.1%

P.21 Applicants (all ages) by ethnic group

Statistic	Ethnic group	2011	2012	2013	2014	2015	2016
June deadline applicants	Asian	4,505	4,820	4,855	4,470	5,035	5,195
	Black	2,250	2,455	2,500	2,695	2,995	3,370
	Mixed	1,590	1,640	1,700	1,610	1,815	1,945
	White	31,140	30,900	30,110	28,340	28,210	29,475
	Other	350	425	435	435	495	585
Placed June deadline applicants	Asian	565	550	515	500	600	605
	Black	180	205	245	265	295	395
	Mixed	230	230	220	235	265	285
	White	4,755	4,350	4,275	4,300	4,480	4,380
	Other	50	35	45	45	45	50
All placed applicants	Asian	585	605	590	560	735	745
	Black	200	255	290	300	365	460
	Mixed	235	250	245	255	290	325
	White	4,845	4,605	4,595	4,505	4,950	4,800
	Other	50	50	50	50	60	60

P.22 Applications (all ages) by ethnic group

Statistic	Ethnic group	2011	2012	2013	2014	2015	2016
June deadline applications	Asian	4,715	4,970	4,980	4,610	5,150	5,310
	Black	2,420	2,615	2,600	2,825	3,105	3,495
	Mixed	1,690	1,700	1,760	1,665	1,875	2,005
	White	33,465	32,705	31,610	29,705	29,320	30,605
	Other	365	450	450	450	510	605
Offers	Asian	2,355	2,645	2,780	2,705	3,085	3,330
	Black	695	855	955	1,115	1,210	1,550
	Mixed	980	1,030	1,145	1,090	1,250	1,380
	White	19,975	20,445	20,745	20,435	20,665	22,105
	Other	185	235	230	235	285	340
Offer rate	Asian	50.0%	53.2%	55.8%	58.6%	59.9%	62.8%
	Black	28.7%	32.8%	36.7%	39.4%	39.0%	44.3%
	Mixed	58.1%	60.4%	65.2%	65.4%	66.5%	69.0%
	White	59.7%	62.5%	65.6%	68.8%	70.5%	72.2%
	Other	50.8%	52.2%	51.3%	52.7%	56.2%	56.5%

Technical Notes and Definitions

UCAS undergraduate scheme

Adjustment

Adjustment allows applicants who have met and exceeded the terms of their conditional firm offer to seek and find a place at another provider whilst keeping their place at their original firm choice provider.

Clearing

Clearing is a route for applicants that are not placed and holding no offers to find a place on courses with vacancies.

Cycle year

The UCAS application cycle which runs from September to October the following year. For example the 2016 cycle runs from September 2015 through to October 2016.

End of cycle

The point in the cycle to which the numbers in this report refer, and the point at which the cycle is closed such that no more applications or offers can be made, and no more applicants can be placed. Numbers reported at the end of cycle exclude information on a small number of applicants who cancelled during the cycle.

Extra

Applicants who are unsuccessful in obtaining an offer or decline all offers may be eligible to apply through Extra, where they can apply to one further course at a time. Extra operates from 25 February until early July. It provides applicants who are eligible the possibility of obtaining an offer before exam results are published and Clearing starts.

June 30 deadline

The deadline for main scheme applications. Applicants who apply after this date will go directly into Clearing.

Record of Prior Acceptance (RPA)

RPA is an acceptance route used when a provider informs UCAS of applicants it has accepted outside of the normal application process (e.g. individuals who have applied directly to the provider).

Reporting groups

Ethnic group

High level grouping of ethnic origin as declared by the applicant: 'White', 'Black', 'Asian', 'Mixed', 'Other', 'Unknown'. Applicants who declare themselves as 'Unknown' ethnic origin are not reported in these tables, but are included in the associated csv data file.

POLAR3 quintile

Developed by HEFCE, POLAR3 classifies small areas across the UK into five groups according to their level of young participation in Higher Education. Each of these groups represents around 20 per cent of young people and is ranked from Quintile 1 (areas with the lowest young participation rates, considered as the most disadvantaged) to Quintile 5 (highest young participation rates, considered most advantaged). POLAR3 is based on the participation rates of young people between 2005 and 2009 who entered Higher Education between 2005-06 and 2010-11, therefore is most suitable for applicants aged 19 and under. These groups are assigned using the postcode declared by the applicant at the time of their application. If a UK postcode is invalid, considered unsafe for measurement or there is no link to Census geography possible then the applicant is not assigned to a quintile. Applicants with no POLAR3 quintile are not reported.

Sex

Sex as declared by the applicant.

SIMD quintile

Scottish index of multiple deprivation (SIMD) for 2012 identifies small area concentrations of multiple deprivation across all of Scotland, providing a relative measure of deprivation amongst 6505 small areas (data zones) based on 7 socio-economic domains. These small areas are classified into five groups ranked from Quintile 1 (considered the most deprived) to Quintile 5 (considered least deprived), with equal populations in each quintile. Quintiles are assigned using the postcode declared by the applicant, applicants declaring invalid postcodes are classified as 'Not assigned' and are not reported.

SIMD is only defined for applicants domiciled in Scotland, therefore any applicants domiciled outside of Scotland cannot be assigned to an SIMD quintile and so are not reported for this measure.

SIMD is only reported for providers in Scotland. Application and entry rates by SIMD are reported in the 2016 End of Cycle Report and the 2016 cycle January deadline application rate report.

Statistics reported in the tables

All placed applicants

The number of applicants placed for entry into higher education at the provider through one of their choices, including any choices made through Extra, or via Adjustment, Clearing or RPA.

All placed applicants per 10,000 population

The number of total UK domiciled 18 year old placed applicants for entry into higher education at the provider divided by the number of UK 18 year olds in the population, multiplied by 10,000. This gives the number of 18 year olds, for every 10,000 in the population, that were placed at the provider through one of their choices, including any choices made through Extra, or via Adjustment, Clearing or RPA. It is an alternative way of expressing the entry rate to a provider. By referencing the underlying population this statistic shows how the number of placed applicants is changing in relation to the available pool of potential applicants and so gives the chance that somebody from the group will be placed at a provider.

This statistic is only reported for 18 year olds.

Average offer rate

The offer rate that you might expect if the predicted grades and subject choice of applicants were the only factors that influenced whether an applicant was made an offer by the provider. The average offer rate is calculated by dividing applicants according to their specific combination of grades (for A levels the best three predicted grades are used, for BTECs, International Baccalaureate and Scottish Highers and Advanced Highers, predicted grades along with any grades already achieved upon applying are used) and subject choice. For each combination the number of main scheme offers is divided by the number of main scheme applications, to give an overall offer rate. This is then multiplied by the number of applications made by the group for which the average offer rate is being calculated (for example POLAR3 quintile 1), to give an average number of offers for that group. These average number of offers are then added together across all combinations of predicted grade and subject and divided by the number of main scheme applications from the group to give the average offer rate.

The average offer rate does not attempt to control for any other factors that may play a part in the decision to make an offer, such as the subject of the qualifications studied, their relevance to a course, or the grade in each subject; higher numbers of A levels being studied; the exact profile of grades predicted; personal statements; teacher references; interviews; or any other criteria (such as work experience or portfolios) that may be part of the admissions decision.

This statistic is only reported for 18 year olds.

Contribution of group to the average offer rate

The way in which the average offer rate is defined means that the pattern of application and offers of a group (for example POLAR3 quintile 1) will always contribute, in part, to the average offer rate for that group. When this contribution is large, the average offer rate will mainly reflect the patterns for the group, meaning that the value of the average offer rate will be similar to the offer rate, the percentage point difference statistic will be small, and any real difference between the offer rate and what might be expected given the predicted grades and subject choices of the applicants will be difficult to detect.

Values of the contribution of group to the average offer rate range between 0 and 1. The closer the value is to 1 the greater the contribution a group makes to its own average offer rate.

This statistic is only reported for 18 year olds.

Placed June deadline applicants

An applicant who has been placed for entry into higher education at the provider through a June deadline application.

Placed June deadline applicants per 10,000 population

The number of UK domiciled 18 year old placed June deadline applicants at the provider divided by the number of UK 18 year olds in the population, multiplied by 10,000. This gives the number of 18 year olds, for every 10,000 in the population, that were placed at the provider through one of their June deadline applications. It is an alternative way of expressing the entry rate to a provider, but for placed June deadline applicants only. By referencing the underlying population this statistic shows how the number of placed June deadline applicants is changing in relation to the available pool of potential 18 year old applicants and so gives the chance that somebody from the group will be placed at a provider through a June deadline application.

This statistic is only reported for 18 year olds.

June deadline applications

An application (or choice) to a course in higher education to the provider that is made by the June 30 deadline. Each applicant can make up to five choices this way. The number of June deadline applications does not include choices made through the following routes: Clearing, Extra, Adjustment and RPAs. Applications made to October deadline courses received after the October deadline are not included in these statistics.

June deadline applicants

The number of applicants that made at least one application to the provider by the June 30 deadline.

June deadline applicants per 10,000 population

The number of UK domiciled 18 year old June deadline applicants to the provider divided by the number of UK 18 year olds in the population, multiplied by 10,000. This gives the number of 18 year olds, for every 10,000 in the population, who applied by the June 30 deadline. It is equivalent to the application rate. By referencing the underlying population this statistic shows how the number of June deadline applicants is changing in relation to the available pool of potential 18 year old applicants and so gives the chance that somebody from the group will apply to a provider by the June 30 deadline.

This statistic is only reported for 18 year olds.

Offers

An offer is defined as a provider's decision in response to an application to offer a place to an applicant, often subject to the applicant satisfying academic and/or other criteria, via a June deadline application (i.e. does not cover choices made through the following routes: Clearing, Extra, Adjustment and RPAs).

Offer rate

The number of offers made divided by the number of June deadline applications. This gives the proportion of all June deadline applications to the provider that received an offer.

Percentage point difference between offer rate and average offer rate

The offer rate minus the average offer rate.

The percentage point difference can be compared to the expected range of statistical variation resulting from the calculation of the average offer rate using the Average Offer Rate Lookup Table. Where the value of the percentage point difference lies outside of this range, the percentage point difference may be considered to represent a real difference between the offer rate and the average offer rate.

Other definitions

Age

This analysis uses country-specific age definitions that align with the cut off points for school and college cohorts within the different administrations of the UK. For England and Wales, ages are defined on the 31 August, for Northern Ireland on the 1 July and for Scotland on the 28 February the following year. Defining ages in this way matches the assignment of children to school cohorts. For applicants outside of the UK a cohort cut off of 31 August has been used.

Provider

A higher education provider - a university or college.

UK domiciled

Declared area of permanent residence within England, Northern Ireland, Scotland and Wales. Applicants from the Channel Islands and Isle of Man are not included.