

## N91 Nottingham Trent University

**Cycle years:** 2011 - 2016

**Cycle Reference Point:** End of Cycle

**Applicant coverage:** UK domiciled

**Reporting groups:** Sex, POLAR3, ethnic group

**Applicant statistics:** June deadline applicants, placed June deadline applicants, all placed applicants, June deadline applicants per 10,000 population, placed June deadline applicants per 10,000 population, all placed applicants per 10,000 population

**Application statistics:** June deadline applications, offers, offer rate, average offer rate, percentage point difference between offer rate and average offer rate, contribution of group to the average offer rate

**Non-disclosure controls:** To avoid the disclosure of information about any individual the following measures are taken

- Applicants, placed applicants, applications and offers are rounded to the nearest 5.
- Applicants/placed applicants per 10,000 population figures are reported as 0 if the applicant/placed applicant figures are rounded to 0.
- All statistics related to the offer rate are not reported when the number of applications for a group is less than 10. The percentage point difference between the offer rate and the average offer rate is not reported when the number of applications for a group is less than 50.
- Offer rates are reported as 0% if there are fewer than 5 offers, and 100% if the number of offers is within 5 of the number of applications. When the offer rate is reported as 0% or 100%, it is reported in italics.

### Contents:

18 year old applicants:	P.1
18 year old applications:	P.2
18 year old applicants by sex:	P.3
18 year old applications by sex:	P.4
18 year old applicants by POLAR3 quintile:	P.7
18 year old applications by POLAR3 quintile:	P.8
18 year old applicants by ethnic group:	P.11
18 year old applications by ethnic group:	P.12
Applicants (all ages):	P.15
Applications (all ages):	P.16
Applicants (all ages) by sex:	P.17
Applications (all ages) by sex:	P.18
Applicants (all ages) by POLAR3 quintile:	P.19
Applications (all ages) by POLAR3 quintile:	P.20
Applicants (all ages) by ethnic group:	P.21
Applications (all ages) by ethnic group:	P.22

## P.1 18 year old applicants

Statistic	2011	2012	2013	2014	2015	2016
June deadline applicants	21,760	19,115	18,410	19,010	20,700	21,000
Placed June deadline applicants	3,465	3,180	3,340	4,025	3,625	3,595
All placed applicants	3,655	3,585	3,650	4,470	4,075	4,150
June deadline applicants per 10,000 population	282.5	247.1	241.9	252.4	270.2	280.2
Placed June deadline applicants per 10,000	45.0	41.1	43.9	53.4	47.3	47.9
All placed applicants per 10,000 population	47.4	46.3	48.0	59.4	53.2	55.4

## P.2 18 year old applications

Statistic	2011	2012	2013	2014	2015	2016
June deadline applications	23,640	20,725	19,720	20,415	22,245	22,520
Offers	16,960	15,465	16,865	17,805	19,485	19,515
Offer rate	71.7%	74.6%	85.5%	87.2%	87.6%	86.7%

### P.3 18 year old applicants by sex

Statistic	Sex	2011	2012	2013	2014	2015	2016
June deadline applicants	Men	9,415	8,185	8,065	8,160	8,500	8,780
	Women	12,345	10,925	10,340	10,850	12,200	12,220
Placed June deadline applicants	Men	1,520	1,340	1,425	1,660	1,370	1,500
	Women	1,945	1,840	1,915	2,365	2,255	2,090
All placed applicants	Men	1,605	1,535	1,570	1,865	1,570	1,760
	Women	2,050	2,050	2,080	2,610	2,505	2,390
June deadline applicants per 10,000 population	Men	239.2	206.4	206.6	210.8	216.6	228.6
	Women	327.8	289.9	279.1	296.4	326.5	334.4
Placed June deadline applicants per 10,000 population	Men	38.6	33.7	36.5	42.8	35.0	39.1
	Women	51.6	48.8	51.6	64.6	60.3	57.2
All placed applicants per 10,000 population	Men	40.8	38.7	40.2	48.1	40.0	45.8
	Women	54.4	54.4	56.1	71.2	67.1	65.4

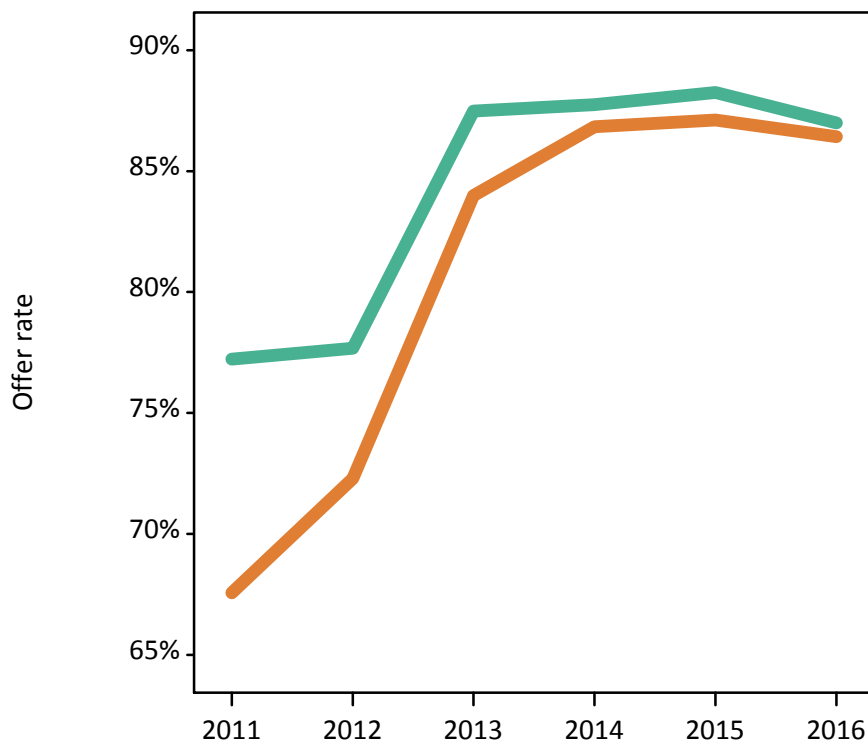
### P.4 18 year old applications by sex

Statistic	Sex	2011	2012	2013	2014	2015	2016
June deadline applications	Men	10,230	8,925	8,675	8,760	9,180	9,440
	Women	13,415	11,805	11,050	11,650	13,065	13,080
Offers	Men	7,900	6,930	7,585	7,690	8,100	8,210
	Women	9,060	8,535	9,280	10,120	11,385	11,305
Offer rate	Men	77.2%	77.7%	87.5%	87.8%	88.3%	87.0%
	Women	67.6%	72.3%	84.0%	86.8%	87.1%	86.4%
Average offer rate	Men	76.2%	77.1%	86.9%	87.8%	88.8%	87.2%
	Women	68.4%	72.7%	84.4%	86.8%	86.7%	86.3%
Percentage point difference between offer rate and average offer rate	Men	1.1	0.5	0.6	-0.0	-0.5	-0.2
	Women	-0.8	-0.4	-0.4	0.0	0.4	0.1
Contribution of group to the average offer rate	Men	0.584	0.587	0.601	0.600	0.587	0.598
	Women	0.683	0.688	0.687	0.699	0.710	0.710

### P.5 18 year old offer rate by sex

Note: The line for a group is not plotted when that group made fewer than 10 applications in any of the years from 2011-2016.

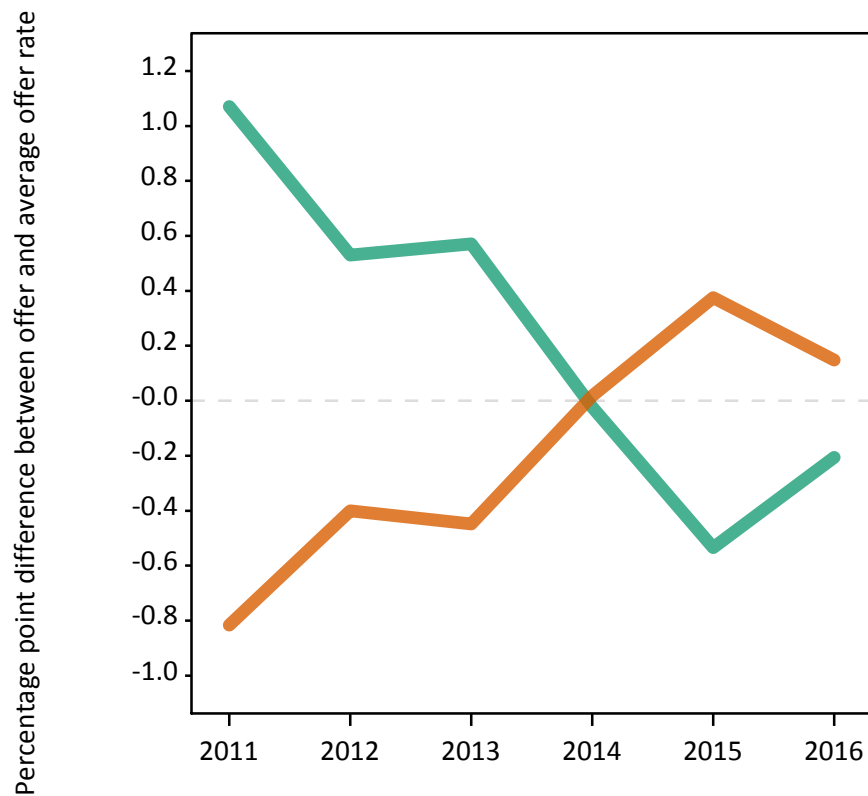
Men  
Women



### P.6 Percentage point difference between 18 year old offer rate and average offer rate by sex

Note: The line for a group is not plotted when that group made fewer than 50 applications in any of the years from 2011-2016.

Men  
Women



## P.7 18 year old applicants by POLAR3 quintile

Statistic	POLAR3 quintile	2011	2012	2013	2014	2015	2016
June deadline applicants	Quintile 1	2,470	2,180	2,180	2,335	2,580	2,570
	Quintile 2	3,520	3,225	3,070	3,320	3,590	3,555
	Quintile 3	3,990	3,560	3,610	3,670	4,040	3,995
	Quintile 4	5,065	4,320	4,240	4,205	4,690	4,755
	Quintile 5	6,685	5,795	5,290	5,445	5,750	6,040
Placed June deadline applicants	Quintile 1	395	365	445	455	470	445
	Quintile 2	555	500	605	705	630	620
	Quintile 3	605	600	655	800	690	625
	Quintile 4	835	690	750	910	780	845
	Quintile 5	1,075	1,015	880	1,150	1,050	1,035
All placed applicants	Quintile 1	415	415	470	510	520	505
	Quintile 2	580	580	650	775	705	710
	Quintile 3	630	670	720	870	775	735
	Quintile 4	880	775	820	1,015	880	970
	Quintile 5	1,145	1,135	990	1,295	1,185	1,210
June deadline applicants per 10,000 population	Quintile 1	171.8	153.0	156.3	167.7	184.3	190.3
	Quintile 2	234.1	215.2	208.4	226.8	241.6	245.8
	Quintile 3	259.4	230.5	236.8	243.8	263.0	265.7
	Quintile 4	323.4	272.2	271.0	272.9	299.6	308.0
	Quintile 5	403.7	344.9	320.0	333.9	343.4	365.5
Placed June deadline applicants per 10,000 population	Quintile 1	27.6	25.8	31.8	32.8	33.7	33.1
	Quintile 2	36.9	33.3	41.1	48.0	42.5	43.0
	Quintile 3	39.2	38.9	43.0	53.2	44.9	41.7
	Quintile 4	53.4	43.5	48.0	59.0	49.7	54.9
	Quintile 5	64.8	60.5	53.3	70.4	62.7	62.8
All placed applicants per 10,000 population	Quintile 1	28.9	29.2	33.7	36.7	37.2	37.6
	Quintile 2	38.7	38.7	44.0	52.9	47.5	49.2
	Quintile 3	40.9	43.4	47.1	57.9	50.5	49.0
	Quintile 4	56.1	49.0	52.3	65.7	56.2	62.8
	Quintile 5	69.2	67.6	60.0	79.4	70.7	73.4

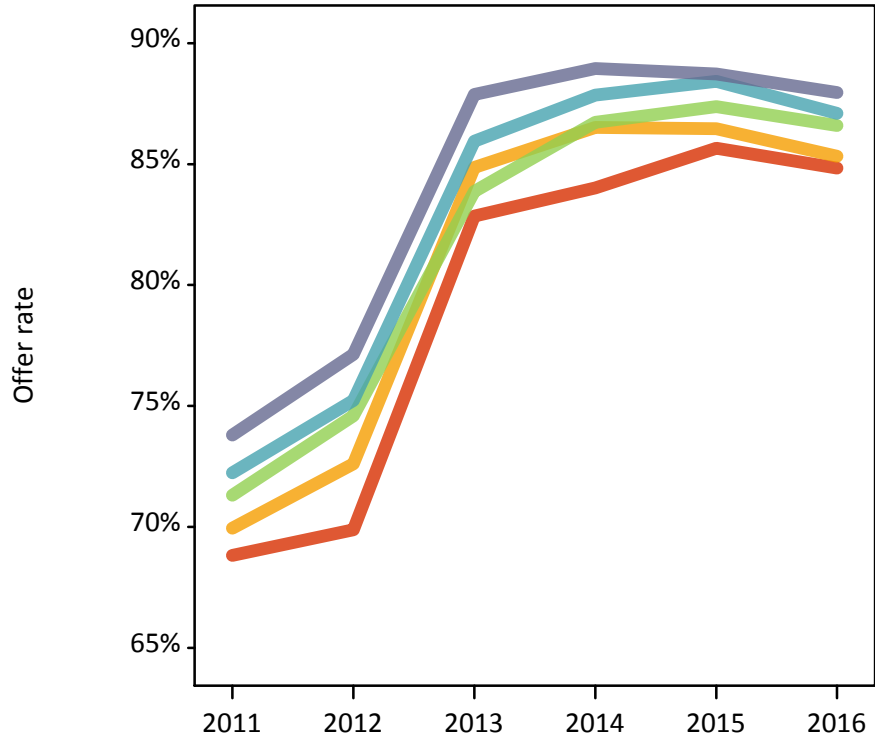
## P.8 18 year old applications by POLAR3 quintile

Statistic	POLAR3 quintile	2011	2012	2013	2014	2015	2016
June deadline applications	Quintile 1	2,810	2,445	2,385	2,570	2,850	2,840
	Quintile 2	3,865	3,545	3,385	3,565	3,950	3,825
	Quintile 3	4,330	3,835	3,850	3,910	4,305	4,305
	Quintile 4	5,460	4,645	4,470	4,520	4,975	5,045
	Quintile 5	7,145	6,230	5,615	5,805	6,105	6,405
Offers	Quintile 1	1,935	1,710	1,975	2,160	2,440	2,410
	Quintile 2	2,705	2,575	2,870	3,085	3,415	3,260
	Quintile 3	3,085	2,860	3,230	3,390	3,760	3,725
	Quintile 4	3,945	3,495	3,840	3,970	4,395	4,395
	Quintile 5	5,275	4,805	4,935	5,160	5,420	5,635
Offer rate	Quintile 1	68.8%	69.9%	82.9%	84.0%	85.7%	84.8%
	Quintile 2	70.0%	72.6%	84.9%	86.5%	86.5%	85.3%
	Quintile 3	71.3%	74.6%	83.9%	86.7%	87.4%	86.6%
	Quintile 4	72.2%	75.2%	85.9%	87.9%	88.4%	87.1%
	Quintile 5	73.8%	77.1%	87.9%	89.0%	88.7%	88.0%
Average offer rate	Quintile 1	70.3%	71.3%	84.0%	85.4%	86.9%	85.2%
	Quintile 2	70.3%	74.3%	85.1%	86.5%	86.7%	85.7%
	Quintile 3	71.9%	74.8%	84.6%	87.2%	87.4%	86.5%
	Quintile 4	71.9%	74.6%	85.8%	87.9%	87.9%	86.9%
	Quintile 5	72.9%	75.9%	86.8%	88.0%	88.3%	87.7%
Percentage point difference between offer rate and average offer rate	Quintile 1	-1.5	-1.4	-1.2	-1.3	-1.3	-0.4
	Quintile 2	-0.4	-1.7	-0.3	0.0	-0.3	-0.4
	Quintile 3	-0.6	-0.2	-0.7	-0.4	-0.1	0.1
	Quintile 4	0.3	0.6	0.1	-0.1	0.5	0.2
	Quintile 5	0.9	1.2	1.1	0.9	0.4	0.2
Contribution of group to the average offer rate	Quintile 1	0.177	0.188	0.184	0.182	0.185	0.183
	Quintile 2	0.208	0.222	0.224	0.224	0.225	0.218
	Quintile 3	0.216	0.227	0.241	0.233	0.231	0.230
	Quintile 4	0.264	0.266	0.270	0.261	0.263	0.263
	Quintile 5	0.349	0.356	0.340	0.342	0.329	0.343

### P.9 18 year old offer rate by POLAR3 quintile

Note: The line for a group is not plotted when that group made fewer than 10 applications in any of the years from 2011-2016.

- Quintile 1
- Quintile 2
- Quintile 3
- Quintile 4
- Quintile 5



### P.10 Percentage point difference between 18 year old offer rate and average offer rate by POLAR3 quintile

Note: The line for a group is not plotted when that group made fewer than 50 applications in any of the years from 2011-2016.

- Quintile 1
- Quintile 2
- Quintile 3
- Quintile 4
- Quintile 5



## P.11 18 year old applicants by ethnic group

Statistic	Ethnic group	2011	2012	2013	2014	2015	2016
June deadline applicants	Asian	2,130	1,850	1,740	1,825	1,985	2,000
	Black	1,180	1,050	1,130	1,190	1,485	1,400
	Mixed	770	665	665	765	880	940
	White	17,475	15,365	14,725	15,040	16,125	16,420
	Other	130	125	115	135	165	160
Placed June deadline applicants	Asian	305	280	275	330	300	270
	Black	155	175	205	235	220	195
	Mixed	135	100	130	175	155	165
	White	2,845	2,600	2,695	3,250	2,920	2,930
	Other	10	20	20	25	20	25
All placed applicants	Asian	335	335	305	385	360	340
	Black	170	210	245	285	265	255
	Mixed	140	120	145	190	175	190
	White	2,980	2,885	2,920	3,575	3,240	3,325
	Other	15	25	25	25	25	30
June deadline applicants per 10,000 population	Asian	338.1	286.0	263.7	269.1	280.3	277.8
	Black	432.0	372.5	380.6	392.6	467.1	447.4
	Mixed	317.1	255.7	245.2	266.6	284.7	298.2
	White	269.9	238.0	234.0	243.8	258.8	271.5
	Other	159.3	142.4	126.8	142.9	173.3	162.2
Placed June deadline applicants per 10,000 population	Asian	48.6	43.1	42.0	49.0	42.7	37.7
	Black	57.1	61.8	69.7	77.5	69.7	62.0
	Mixed	55.7	37.6	48.5	60.1	49.6	52.4
	White	44.0	40.2	42.9	52.7	46.9	48.4
	Other	13.6	22.6	19.9	24.7	18.7	24.2
All placed applicants per 10,000 population	Asian	53.3	52.0	46.5	56.8	50.9	47.0
	Black	62.5	73.9	83.2	94.0	83.6	80.9
	Mixed	58.2	46.1	52.9	66.0	57.4	60.7
	White	46.0	44.7	46.4	58.0	52.0	55.0
	Other	17.3	26.0	25.4	25.8	23.9	29.2



## P.12 18 year old applications by ethnic group

Statistic	Ethnic group	2011	2012	2013	2014	2015	2016
June deadline applications	Asian	2,310	2,020	1,890	1,960	2,125	2,135
	Black	1,235	1,090	1,160	1,235	1,530	1,440
	Mixed	820	725	710	825	930	990
	White	19,055	16,700	15,805	16,195	17,420	17,710
	Other	135	135	120	140	175	165
Offers	Asian	1,590	1,450	1,580	1,695	1,845	1,810
	Black	835	770	930	1,060	1,305	1,190
	Mixed	580	500	625	720	815	850
	White	13,800	12,605	13,605	14,160	15,315	15,460
	Other	90	95	100	115	150	135
Offer rate	Asian	68.8%	71.8%	83.6%	86.5%	86.9%	84.9%
	Black	67.5%	70.7%	80.0%	86.0%	85.3%	82.8%
	Mixed	71.0%	69.3%	87.9%	87.4%	87.7%	86.0%
	White	72.4%	75.5%	86.1%	87.4%	87.9%	87.3%
	Other	66.7%	71.6%	81.8%	83.3%	84.1%	81.9%
Average offer rate	Asian	70.7%	73.3%	85.2%	87.2%	88.6%	86.6%
	Black	70.6%	75.6%	84.4%	88.0%	88.7%	86.6%
	Mixed	71.6%	71.4%	86.8%	87.9%	88.2%	86.7%
	White	72.0%	74.9%	85.6%	87.2%	87.3%	86.7%
	Other	69.2%	70.1%	84.2%	84.9%	86.4%	86.2%
Percentage point difference between offer rate and average offer rate	Asian	-1.9	-1.5	-1.6	-0.7	-1.7	-1.7
	Black	-3.1	-4.9	-4.4	-2.0	-3.4	-3.8
	Mixed	-0.6	-2.1	1.1	-0.5	-0.4	-0.7
	White	0.5	0.6	0.5	0.3	0.6	0.6
	Other	-2.6	1.6	-2.4	-1.5	-2.3	-4.3
Contribution of group to the average offer rate	Asian	0.183	0.196	0.193	0.180	0.174	0.170
	Black	0.122	0.129	0.142	0.137	0.138	0.131
	Mixed	0.078	0.093	0.091	0.091	0.089	0.085
	White	0.830	0.832	0.829	0.819	0.808	0.810
	Other	0.076	0.061	0.047	0.048	0.044	0.057

### P.13 18 year old offer rate by ethnic group

Note: The line for a group is not plotted when that group made fewer than 10 applications in any of the years from 2011-2016.

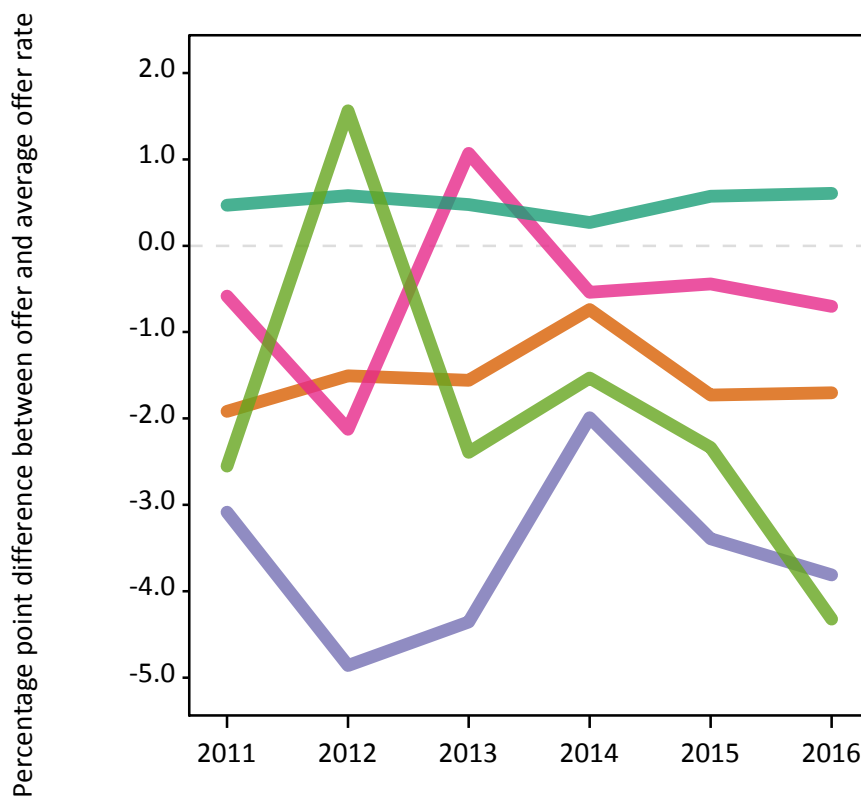
- Asian
- Black
- Mixed
- White
- Other



### P.14 Percentage point difference between 18 year old offer rate and average offer rate by ethnic group

Note: The line for a group is not plotted when that group made fewer than 50 applications in any of the years from 2011-2016.

- Asian
- Black
- Mixed
- White
- Other



### P.15 Applicants (all ages)

Statistic	2011	2012	2013	2014	2015	2016
June deadline applicants	36,580	30,285	30,085	31,105	33,160	32,920
Placed June deadline applicants	6,150	5,285	5,955	6,730	6,205	6,175
All placed applicants	6,545	6,110	6,610	7,515	7,140	7,290

### P.16 Applications (all ages)

Statistic	2011	2012	2013	2014	2015	2016
June deadline applications	40,550	33,430	32,820	33,950	36,255	35,930
Offers	26,255	23,175	26,370	27,745	30,050	29,220
Offer rate	64.8%	69.3%	80.4%	81.7%	82.9%	81.3%

### P.17 Applicants (all ages) by sex

Statistic	Sex	2011	2012	2013	2014	2015	2016
June deadline applicants	Men	16,380	13,400	13,575	13,740	14,280	14,305
	Women	20,200	16,885	16,515	17,365	18,880	18,615
Placed June deadline applicants	Men	2,780	2,300	2,580	2,835	2,545	2,700
	Women	3,370	2,985	3,375	3,895	3,660	3,475
All placed applicants	Men	2,970	2,715	2,900	3,215	3,000	3,250
	Women	3,575	3,395	3,710	4,300	4,140	4,040

### P.18 Applications (all ages) by sex

Statistic	Sex	2011	2012	2013	2014	2015	2016
June deadline applications	Men	18,240	14,850	14,885	14,990	15,670	15,725
	Women	22,305	18,580	17,935	18,965	20,585	20,205
Offers	Men	12,585	10,710	12,180	12,195	13,000	12,775
	Women	13,670	12,465	14,190	15,550	17,045	16,440
Offer rate	Men	69.0%	72.1%	81.8%	81.4%	83.0%	81.2%
	Women	61.3%	67.1%	79.1%	82.0%	82.8%	81.4%

### P.19 Applicants (all ages) by POLAR3 quintile

Statistic	POLAR3 quintile	2011	2012	2013	2014	2015	2016
June deadline applicants	Quintile 1	4,580	3,900	3,970	4,220	4,495	4,510
	Quintile 2	6,250	5,275	5,150	5,545	5,935	5,795
	Quintile 3	6,790	5,750	5,905	5,930	6,515	6,235
	Quintile 4	8,130	6,555	6,650	6,780	7,280	7,210
	Quintile 5	10,760	8,735	8,375	8,565	8,850	9,010
Placed June deadline applicants	Quintile 1	830	750	880	940	905	905
	Quintile 2	1,070	880	1,080	1,220	1,150	1,150
	Quintile 3	1,115	970	1,140	1,300	1,195	1,085
	Quintile 4	1,330	1,090	1,290	1,430	1,280	1,360
	Quintile 5	1,790	1,590	1,555	1,835	1,660	1,650
All placed applicants	Quintile 1	885	880	965	1,055	1,050	1,070
	Quintile 2	1,140	1,030	1,185	1,350	1,300	1,340
	Quintile 3	1,185	1,130	1,270	1,420	1,380	1,315
	Quintile 4	1,410	1,245	1,425	1,600	1,475	1,570
	Quintile 5	1,920	1,810	1,755	2,080	1,920	1,965

### P.20 Applications (all ages) by POLAR3 quintile

Statistic	POLAR3 quintile	2011	2012	2013	2014	2015	2016
June deadline applications	Quintile 1	5,330	4,500	4,515	4,795	5,130	5,155
	Quintile 2	7,065	5,965	5,785	6,120	6,670	6,425
	Quintile 3	7,530	6,300	6,425	6,445	7,090	6,795
	Quintile 4	8,875	7,095	7,105	7,305	7,795	7,715
	Quintile 5	11,680	9,500	8,950	9,215	9,485	9,665
Offers	Quintile 1	3,285	2,915	3,455	3,730	4,130	4,010
	Quintile 2	4,435	4,020	4,580	4,900	5,430	5,100
	Quintile 3	4,830	4,305	5,120	5,235	5,840	5,530
	Quintile 4	5,770	5,025	5,775	6,070	6,565	6,365
	Quintile 5	7,895	6,870	7,415	7,755	8,005	8,080
Offer rate	Quintile 1	61.6%	64.7%	76.5%	77.8%	80.5%	77.8%
	Quintile 2	62.8%	67.4%	79.1%	80.0%	81.5%	79.4%
	Quintile 3	64.1%	68.3%	79.7%	81.2%	82.4%	81.4%
	Quintile 4	65.0%	70.8%	81.3%	83.1%	84.2%	82.5%
	Quintile 5	67.6%	72.3%	82.9%	84.2%	84.4%	83.6%

## P.21 Applicants (all ages) by ethnic group

Statistic	Ethnic group	2011	2012	2013	2014	2015	2016
June deadline applicants	Asian	4,055	3,425	3,250	3,285	3,530	3,380
	Black	2,365	2,120	2,160	2,320	2,755	2,690
	Mixed	1,480	1,200	1,210	1,375	1,520	1,595
	White	28,260	23,155	23,095	23,740	24,895	24,775
	Other	260	265	275	265	325	310
Placed June deadline applicants	Asian	635	560	570	605	570	490
	Black	335	370	420	465	455	420
	Mixed	270	210	250	310	285	325
	White	4,860	4,080	4,645	5,280	4,820	4,870
	Other	30	45	45	50	50	45
All placed applicants	Asian	700	695	655	720	705	655
	Black	380	485	520	560	590	585
	Mixed	295	265	285	345	340	400
	White	5,110	4,585	5,060	5,800	5,400	5,560
	Other	35	55	60	55	65	55

## P.22 Applications (all ages) by ethnic group

Statistic	Ethnic group	2011	2012	2013	2014	2015	2016
June deadline applications	Asian	4,535	3,845	3,595	3,590	3,835	3,675
	Black	2,565	2,280	2,300	2,460	2,895	2,845
	Mixed	1,640	1,350	1,340	1,515	1,640	1,725
	White	31,330	25,525	25,165	25,960	27,380	27,170
	Other	280	295	315	285	340	325
Offers	Asian	2,890	2,605	2,840	2,910	3,190	2,915
	Black	1,490	1,450	1,700	1,890	2,260	2,105
	Mixed	1,010	890	1,060	1,210	1,345	1,380
	White	20,565	17,945	20,475	21,400	22,840	22,435
	Other	170	200	220	230	280	245
Offer rate	Asian	63.7%	67.8%	79.0%	81.1%	83.2%	79.4%
	Black	58.1%	63.7%	74.0%	76.7%	78.1%	74.0%
	Mixed	61.5%	66.2%	79.1%	79.9%	82.1%	80.0%
	White	65.6%	70.3%	81.4%	82.4%	83.4%	82.6%
	Other	60.5%	67.5%	69.2%	80.6%	81.8%	74.6%

## Technical Notes and Definitions

### UCAS undergraduate scheme

#### Adjustment

Adjustment allows applicants who have met and exceeded the terms of their conditional firm offer to seek and find a place at another provider whilst keeping their place at their original firm choice provider.

#### Clearing

Clearing is a route for applicants that are not placed and holding no offers to find a place on courses with vacancies.

#### Cycle year

The UCAS application cycle which runs from September to October the following year. For example the 2016 cycle runs from September 2015 through to October 2016.

#### End of cycle

The point in the cycle to which the numbers in this report refer, and the point at which the cycle is closed such that no more applications or offers can be made, and no more applicants can be placed. Numbers reported at the end of cycle exclude information on a small number of applicants who cancelled during the cycle.

#### Extra

Applicants who are unsuccessful in obtaining an offer or decline all offers may be eligible to apply through Extra, where they can apply to one further course at a time. Extra operates from 25 February until early July. It provides applicants who are eligible the possibility of obtaining an offer before exam results are published and Clearing starts.

#### June 30 deadline

The deadline for main scheme applications. Applicants who apply after this date will go directly into Clearing.

#### Record of Prior Acceptance (RPA)

RPA is an acceptance route used when a provider informs UCAS of applicants it has accepted outside of the normal application process (e.g. individuals who have applied directly to the provider).

### Reporting groups

#### Ethnic group

High level grouping of ethnic origin as declared by the applicant: 'White', 'Black', 'Asian', 'Mixed', 'Other', 'Unknown'. Applicants who declare themselves as 'Unknown' ethnic origin are not reported in these tables, but are included in the associated csv data file.

#### POLAR3 quintile

Developed by HEFCE, POLAR3 classifies small areas across the UK into five groups according to their level of young participation in Higher Education. Each of these groups represents around 20 per cent of young people and is ranked from Quintile 1 (areas with the lowest young participation rates, considered as the most disadvantaged) to Quintile 5 (highest young participation rates, considered most advantaged). POLAR3 is based on the participation rates of young people between 2005 and 2009 who entered Higher Education between 2005-06 and 2010-11, therefore is most suitable for applicants aged 19 and under. These groups are assigned using the postcode declared by the applicant at the time of their application. If a UK postcode is invalid, considered unsafe for measurement or there is no link to Census geography possible then the applicant is not assigned to a quintile. Applicants with no POLAR3 quintile are not reported.

#### Sex

Sex as declared by the applicant.

### **SIMD quintile**

Scottish index of multiple deprivation (SIMD) for 2012 identifies small area concentrations of multiple deprivation across all of Scotland, providing a relative measure of deprivation amongst 6505 small areas (data zones) based on 7 socio-economic domains. These small areas are classified into five groups ranked from Quintile 1 (considered the most deprived) to Quintile 5 (considered least deprived), with equal populations in each quintile. Quintiles are assigned using the postcode declared by the applicant, applicants declaring invalid postcodes are classified as 'Not assigned' and are not reported.

SIMD is only defined for applicants domiciled in Scotland, therefore any applicants domiciled outside of Scotland cannot be assigned to an SIMD quintile and so are not reported for this measure.

SIMD is only reported for providers in Scotland. Application and entry rates by SIMD are reported in the 2016 End of Cycle Report and the 2016 cycle January deadline application rate report.

### **Statistics reported in the tables**

#### **All placed applicants**

The number of applicants placed for entry into higher education at the provider through one of their choices, including any choices made through Extra, or via Adjustment, Clearing or RPA.

#### **All placed applicants per 10,000 population**

The number of total UK domiciled 18 year old placed applicants for entry into higher education at the provider divided by the number of UK 18 year olds in the population, multiplied by 10,000. This gives the number of 18 year olds, for every 10,000 in the population, that were placed at the provider through one of their choices, including any choices made through Extra, or via Adjustment, Clearing or RPA. It is an alternative way of expressing the entry rate to a provider. By referencing the underlying population this statistic shows how the number of placed applicants is changing in relation to the available pool of potential applicants and so gives the chance that somebody from the group will be placed at a provider.

This statistic is only reported for 18 year olds.

#### **Average offer rate**

The offer rate that you might expect if the predicted grades and subject choice of applicants were the only factors that influenced whether an applicant was made an offer by the provider. The average offer rate is calculated by dividing applicants according to their specific combination of grades (for A levels the best three predicted grades are used, for BTECs, International Baccalaureate and Scottish Highers and Advanced Highers, predicted grades along with any grades already achieved upon applying are used) and subject choice. For each combination the number of main scheme offers is divided by the number of main scheme applications, to give an overall offer rate. This is then multiplied by the number of applications made by the group for which the average offer rate is being calculated (for example POLAR3 quintile 1), to give an average number of offers for that group. These average number of offers are then added together across all combinations of predicted grade and subject and divided by the number of main scheme applications from the group to give the average offer rate.

The average offer rate does not attempt to control for any other factors that may play a part in the decision to make an offer, such as the subject of the qualifications studied, their relevance to a course, or the grade in each subject; higher numbers of A levels being studied; the exact profile of grades predicted; personal statements; teacher references; interviews; or any other criteria (such as work experience or portfolios) that may be part of the admissions decision.

This statistic is only reported for 18 year olds.



### Contribution of group to the average offer rate

The way in which the average offer rate is defined means that the pattern of application and offers of a group (for example POLAR3 quintile 1) will always contribute, in part, to the average offer rate for that group. When this contribution is large, the average offer rate will mainly reflect the patterns for the group, meaning that the value of the average offer rate will be similar to the offer rate, the percentage point difference statistic will be small, and any real difference between the offer rate and what might be expected given the predicted grades and subject choices of the applicants will be difficult to detect.

Values of the contribution of group to the average offer rate range between 0 and 1. The closer the value is to 1 the greater the contribution a group makes to its own average offer rate.

This statistic is only reported for 18 year olds.

### Placed June deadline applicants

An applicant who has been placed for entry into higher education at the provider through a June deadline application.

### Placed June deadline applicants per 10,000 population

The number of UK domiciled 18 year old placed June deadline applicants at the provider divided by the number of UK 18 year olds in the population, multiplied by 10,000. This gives the number of 18 year olds, for every 10,000 in the population, that were placed at the provider through one of their June deadline applications. It is an alternative way of expressing the entry rate to a provider, but for placed June deadline applicants only. By referencing the underlying population this statistic shows how the number of placed June deadline applicants is changing in relation to the available pool of potential 18 year old applicants and so gives the chance that somebody from the group will be placed at a provider through a June deadline application.

This statistic is only reported for 18 year olds.

### June deadline applications

An application (or choice) to a course in higher education to the provider that is made by the June 30 deadline. Each applicant can make up to five choices this way. The number of June deadline applications does not include choices made through the following routes: Clearing, Extra, Adjustment and RPAs. Applications made to October deadline courses received after the October deadline are not included in these statistics.

### June deadline applicants

The number of applicants that made at least one application to the provider by the June 30 deadline.

### June deadline applicants per 10,000 population

The number of UK domiciled 18 year old June deadline applicants to the provider divided by the number of UK 18 year olds in the population, multiplied by 10,000. This gives the number of 18 year olds, for every 10,000 in the population, who applied by the June 30 deadline. It is equivalent to the application rate. By referencing the underlying population this statistic shows how the number of June deadline applicants is changing in relation to the available pool of potential 18 year old applicants and so gives the chance that somebody from the group will apply to a provider by the June 30 deadline.

This statistic is only reported for 18 year olds.

### Offers

An offer is defined as a provider's decision in response to an application to offer a place to an applicant, often subject to the applicant satisfying academic and/or other criteria, via a June deadline application (i.e. does not cover choices made through the following routes: Clearing, Extra, Adjustment and RPAs).

### Offer rate

The number of offers made divided by the number of June deadline applications. This gives the proportion of all June deadline applications to the provider that received an offer.

### Percentage point difference between offer rate and average offer rate

The offer rate minus the average offer rate.

The percentage point difference can be compared to the expected range of statistical variation resulting from the calculation of the average offer rate using the Average Offer Rate Lookup Table. Where the value of the percentage point difference lies outside of this range, the percentage point difference may be considered to represent a real difference between the offer rate and the average offer rate.

### Other definitions

#### Age

This analysis uses country-specific age definitions that align with the cut off points for school and college cohorts within the different administrations of the UK. For England and Wales, ages are defined on the 31 August, for Northern Ireland on the 1 July and for Scotland on the 28 February the following year. Defining ages in this way matches the assignment of children to school cohorts. For applicants outside of the UK a cohort cut off of 31 August has been used.

#### Provider

A higher education provider - a university or college.

#### UK domiciled

Declared area of permanent residence within England, Northern Ireland, Scotland and Wales. Applicants from the Channel Islands and Isle of Man are not included.