

## R06 Ravensbourne

**Cycle years:** 2011 - 2016

**Cycle Reference Point:** End of Cycle

**Applicant coverage:** UK domiciled

**Reporting groups:** Sex, POLAR3, ethnic group

**Applicant statistics:** June deadline applicants, placed June deadline applicants, all placed applicants, June deadline applicants per 10,000 population, placed June deadline applicants per 10,000 population, all placed applicants per 10,000 population

**Application statistics:** June deadline applications, offers, offer rate, average offer rate, percentage point difference between offer rate and average offer rate, contribution of group to the average offer rate

**Non-disclosure controls:** To avoid the disclosure of information about any individual the following measures are taken

- Applicants, placed applicants, applications and offers are rounded to the nearest 5.
- Applicants/placed applicants per 10,000 population figures are reported as 0 if the applicant/placed applicant figures are rounded to 0.
- All statistics related to the offer rate are not reported when the number of applications for a group is less than 10. The percentage point difference between the offer rate and the average offer rate is not reported when the number of applications for a group is less than 50.
- Offer rates are reported as 0% if there are fewer than 5 offers, and 100% if the number of offers is within 5 of the number of applications. When the offer rate is reported as 0% or 100%, it is reported in italics.

### Contents:

18 year old applicants:	P.1
18 year old applications:	P.2
18 year old applicants by sex:	P.3
18 year old applications by sex:	P.4
18 year old applicants by POLAR3 quintile:	P.7
18 year old applications by POLAR3 quintile:	P.8
18 year old applicants by ethnic group:	P.11
18 year old applications by ethnic group:	P.12
Applicants (all ages):	P.15
Applications (all ages):	P.16
Applicants (all ages) by sex:	P.17
Applications (all ages) by sex:	P.18
Applicants (all ages) by POLAR3 quintile:	P.19
Applications (all ages) by POLAR3 quintile:	P.20
Applicants (all ages) by ethnic group:	P.21
Applications (all ages) by ethnic group:	P.22

## P.1 18 year old applicants

Statistic	2011	2012	2013	2014	2015	2016
June deadline applicants	1,105	1,150	1,175	1,295	1,310	1,290
Placed June deadline applicants	180	245	310	325	295	310
All placed applicants	205	265	330	340	325	350
June deadline applicants per 10,000 population	14.3	14.8	15.4	17.2	17.1	17.2
Placed June deadline applicants per 10,000	2.3	3.2	4.1	4.3	3.9	4.1
All placed applicants per 10,000 population	2.6	3.4	4.3	4.5	4.3	4.6

## P.2 18 year old applications

Statistic	2011	2012	2013	2014	2015	2016
June deadline applications	1,200	1,225	1,280	1,400	1,420	1,365
Offers	280	455	570	570	540	625
Offer rate	23.5%	37.1%	44.6%	40.7%	38.0%	45.7%

### P.3 18 year old applicants by sex

Statistic	Sex	2011	2012	2013	2014	2015	2016
June deadline applicants	Men	530	600	640	660	625	610
	Women	570	545	530	635	685	680
Placed June deadline applicants	Men	115	150	195	175	145	160
	Women	65	95	115	145	150	150
All placed applicants	Men	130	160	205	185	160	175
	Women	70	105	120	155	170	170
June deadline applicants per 10,000 population	Men	13.5	15.2	16.4	17.0	15.9	15.9
	Women	15.2	14.5	14.4	17.3	18.4	18.6
Placed June deadline applicants per 10,000 population	Men	2.9	3.8	4.9	4.5	3.7	4.2
	Women	1.8	2.5	3.2	4.0	4.1	4.1
All placed applicants per 10,000 population	Men	3.4	4.1	5.3	4.8	4.0	4.6
	Women	1.9	2.8	3.3	4.3	4.5	4.7

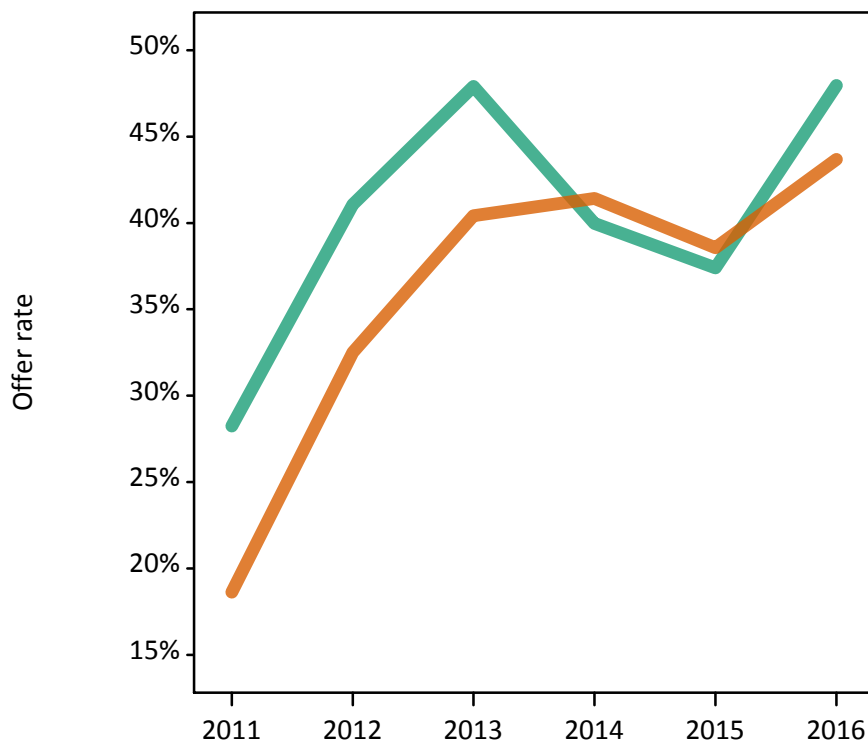
### P.4 18 year old applications by sex

Statistic	Sex	2011	2012	2013	2014	2015	2016
June deadline applications	Men	600	660	715	740	700	660
	Women	595	565	565	665	720	705
Offers	Men	170	270	345	295	260	315
	Women	110	185	230	275	280	310
Offer rate	Men	28.2%	41.1%	47.9%	40.0%	37.4%	48.0%
	Women	18.6%	32.5%	40.4%	41.4%	38.6%	43.7%
Average offer rate	Men	28.4%	38.4%	45.6%	39.2%	36.4%	45.9%
	Women	18.5%	35.6%	43.3%	42.3%	39.5%	45.6%
Percentage point difference between offer rate and average offer rate	Men	-0.2	2.6	2.3	0.8	1.0	2.0
	Women	0.2	-3.0	-2.9	-0.9	-0.9	-1.9
Contribution of group to the average offer rate	Men	0.602	0.631	0.642	0.607	0.595	0.568
	Women	0.598	0.570	0.546	0.563	0.608	0.596

### P.5 18 year old offer rate by sex

Note: The line for a group is not plotted when that group made fewer than 10 applications in any of the years from 2011-2016.

Men  
Women



### P.6 Percentage point difference between 18 year old offer rate and average offer rate by sex

Note: The line for a group is not plotted when that group made fewer than 50 applications in any of the years from 2011-2016.

Men  
Women



## P.7 18 year old applicants by POLAR3 quintile

Statistic	POLAR3 quintile	2011	2012	2013	2014	2015	2016
June deadline applicants	Quintile 1	80	85	90	95	125	100
	Quintile 2	145	170	145	165	190	200
	Quintile 3	300	260	285	360	340	310
	Quintile 4	265	270	335	340	315	325
	Quintile 5	310	355	315	335	335	350
Placed June deadline applicants	Quintile 1	10	15	20	25	30	25
	Quintile 2	20	30	45	45	40	50
	Quintile 3	45	55	65	95	85	70
	Quintile 4	40	50	85	80	60	70
	Quintile 5	60	85	90	80	80	90
All placed applicants	Quintile 1	15	20	25	25	30	35
	Quintile 2	25	35	50	45	45	55
	Quintile 3	50	65	70	100	95	80
	Quintile 4	45	55	90	85	70	75
	Quintile 5	70	90	95	85	90	100
June deadline applicants per 10,000 population	Quintile 1	5.6	5.9	6.4	7.0	9.1	7.3
	Quintile 2	9.6	11.5	10.0	11.3	12.9	13.8
	Quintile 3	19.6	16.8	18.6	23.8	22.0	20.7
	Quintile 4	16.9	17.0	21.4	21.9	20.1	21.0
	Quintile 5	18.8	21.2	19.0	20.5	20.1	21.3
Placed June deadline applicants per 10,000 population	Quintile 1	0.8	1.2	1.6	1.7	2.1	1.9
	Quintile 2	1.4	2.1	3.1	2.9	2.7	3.4
	Quintile 3	2.8	3.7	4.1	6.4	5.6	4.8
	Quintile 4	2.7	3.2	5.5	5.1	3.8	4.4
	Quintile 5	3.7	5.1	5.5	5.0	4.9	5.6
All placed applicants per 10,000 population	Quintile 1	0.9	1.3	1.8	1.7	2.1	2.5
	Quintile 2	1.6	2.2	3.3	3.1	3.0	3.9
	Quintile 3	3.2	4.1	4.6	6.6	6.1	5.4
	Quintile 4	3.0	3.5	5.7	5.5	4.3	4.8
	Quintile 5	4.2	5.4	5.6	5.3	5.4	6.0

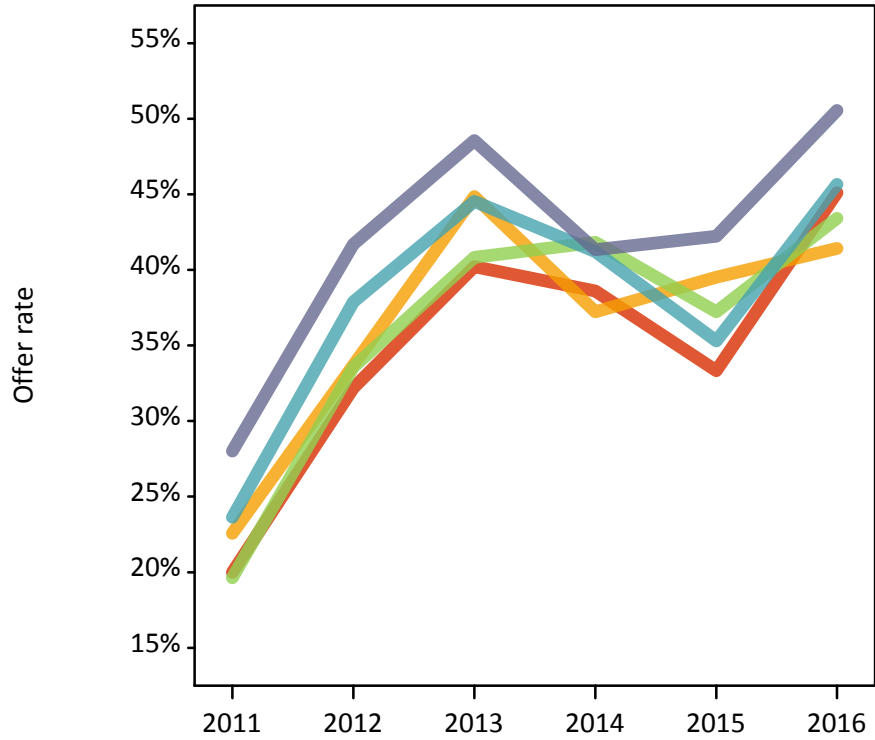
## P.8 18 year old applications by POLAR3 quintile

Statistic	POLAR3 quintile	2011	2012	2013	2014	2015	2016
June deadline applications	Quintile 1	85	85	95	115	130	100
	Quintile 2	155	180	165	180	210	210
	Quintile 3	325	280	310	385	370	335
	Quintile 4	290	295	355	365	335	345
	Quintile 5	340	380	345	360	365	360
Offers	Quintile 1	15	30	40	45	45	45
	Quintile 2	35	60	75	65	85	85
	Quintile 3	65	95	125	160	135	145
	Quintile 4	70	110	160	150	120	160
	Quintile 5	95	160	170	150	155	185
Offer rate	Quintile 1	20.0%	32.2%	40.2%	38.6%	33.3%	45.1%
	Quintile 2	22.6%	33.7%	44.8%	37.2%	39.5%	41.4%
	Quintile 3	19.6%	33.6%	40.8%	41.8%	37.2%	43.4%
	Quintile 4	23.6%	37.9%	44.5%	41.2%	35.3%	45.7%
	Quintile 5	28.0%	41.7%	48.6%	41.3%	42.2%	50.6%
Average offer rate	Quintile 1	22.4%	35.1%	43.2%	40.4%	39.2%	44.6%
	Quintile 2	23.9%	34.9%	44.2%	41.1%	38.0%	44.5%
	Quintile 3	19.8%	34.7%	42.4%	41.3%	36.4%	44.6%
	Quintile 4	24.6%	39.3%	45.1%	41.4%	37.9%	46.5%
	Quintile 5	25.8%	38.5%	46.0%	39.3%	39.5%	47.0%
Percentage point difference between offer rate and average offer rate	Quintile 1	-2.4	-2.9	-3.0	-1.8	-5.8	0.5
	Quintile 2	-1.3	-1.2	0.6	-3.8	1.5	-3.0
	Quintile 3	-0.2	-1.2	-1.6	0.5	0.9	-1.1
	Quintile 4	-1.0	-1.5	-0.5	-0.2	-2.5	-0.9
	Quintile 5	2.2	3.2	2.5	2.1	2.7	3.5
Contribution of group to the average offer rate	Quintile 1	0.139	0.129	0.159	0.122	0.156	0.134
	Quintile 2	0.219	0.230	0.189	0.182	0.211	0.220
	Quintile 3	0.355	0.304	0.319	0.333	0.309	0.304
	Quintile 4	0.312	0.310	0.328	0.309	0.294	0.298
	Quintile 5	0.366	0.378	0.349	0.325	0.322	0.338

### P.9 18 year old offer rate by POLAR3 quintile

Note: The line for a group is not plotted when that group made fewer than 10 applications in any of the years from 2011-2016.

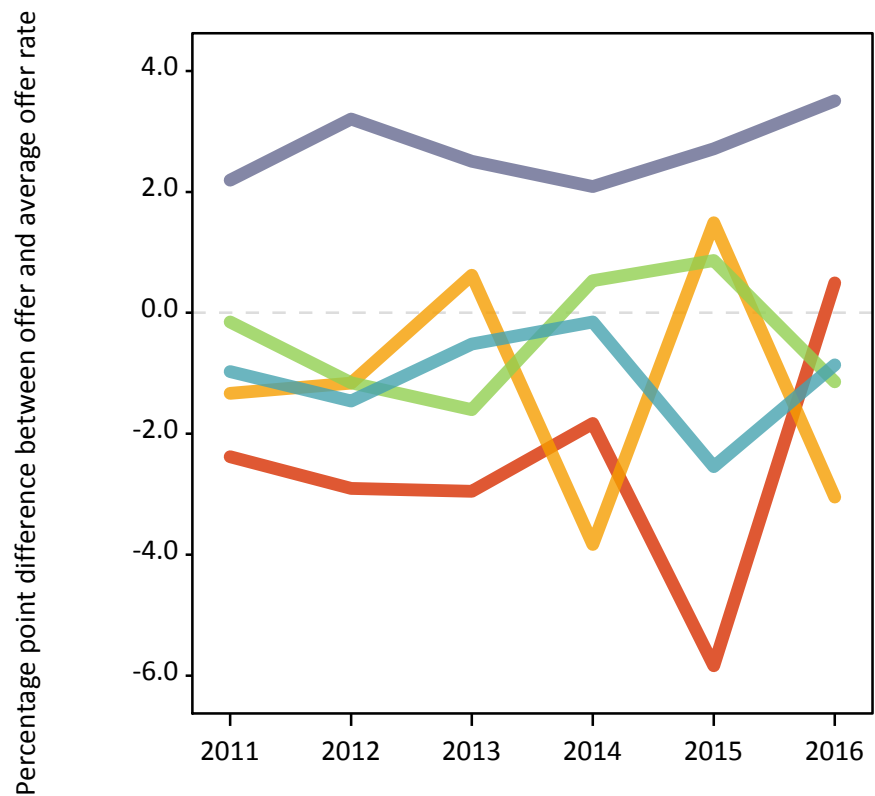
- Quintile 1
- Quintile 2
- Quintile 3
- Quintile 4
- Quintile 5



### P.10 Percentage point difference between 18 year old offer rate and average offer rate by POLAR3 quintile

Note: The line for a group is not plotted when that group made fewer than 50 applications in any of the years from 2011-2016.

- Quintile 1
- Quintile 2
- Quintile 3
- Quintile 4
- Quintile 5



## P.11 18 year old applicants by ethnic group

Statistic	Ethnic group	2011	2012	2013	2014	2015	2016
June deadline applicants	Asian	95	110	100	160	115	120
	Black	150	120	135	140	150	115
	Mixed	80	75	90	105	110	105
	White	755	810	820	840	895	890
	Other	15	30	30	45	35	50
Placed June deadline applicants	Asian	15	25	25	40	25	15
	Black	15	15	25	30	25	20
	Mixed	5	15	20	30	25	25
	White	145	185	230	210	215	240
	Other	0	5	5	10	5	10
All placed applicants	Asian	20	30	25	45	25	25
	Black	20	20	30	30	35	25
	Mixed	10	15	25	30	25	25
	White	160	195	240	220	235	260
	Other	0	5	5	10	10	10
June deadline applicants per 10,000 population	Asian	15.4	17.0	14.9	23.7	16.2	17.0
	Black	54.1	41.9	45.5	45.5	46.8	36.4
	Mixed	33.0	28.4	33.3	35.8	36.0	32.7
	White	11.7	12.5	13.0	13.6	14.4	14.7
	Other	18.5	32.8	32.0	46.2	35.3	51.4
Placed June deadline applicants per 10,000 population	Asian	2.1	3.9	3.8	6.2	3.7	2.4
	Black	5.1	5.7	9.1	10.2	7.5	6.1
	Mixed	2.9	5.0	7.0	9.7	7.5	7.3
	White	2.2	2.8	3.7	3.4	3.5	4.0
	Other	0.0	4.5	5.5	8.6	6.2	8.1
All placed applicants per 10,000 population	Asian	2.9	4.5	4.1	6.5	3.8	3.8
	Black	6.9	6.4	10.1	10.6	10.4	7.4
	Mixed	3.3	5.8	8.5	10.8	7.5	7.6
	White	2.4	3.0	3.8	3.6	3.7	4.3
	Other	0.0	5.7	5.5	9.7	8.3	10.1

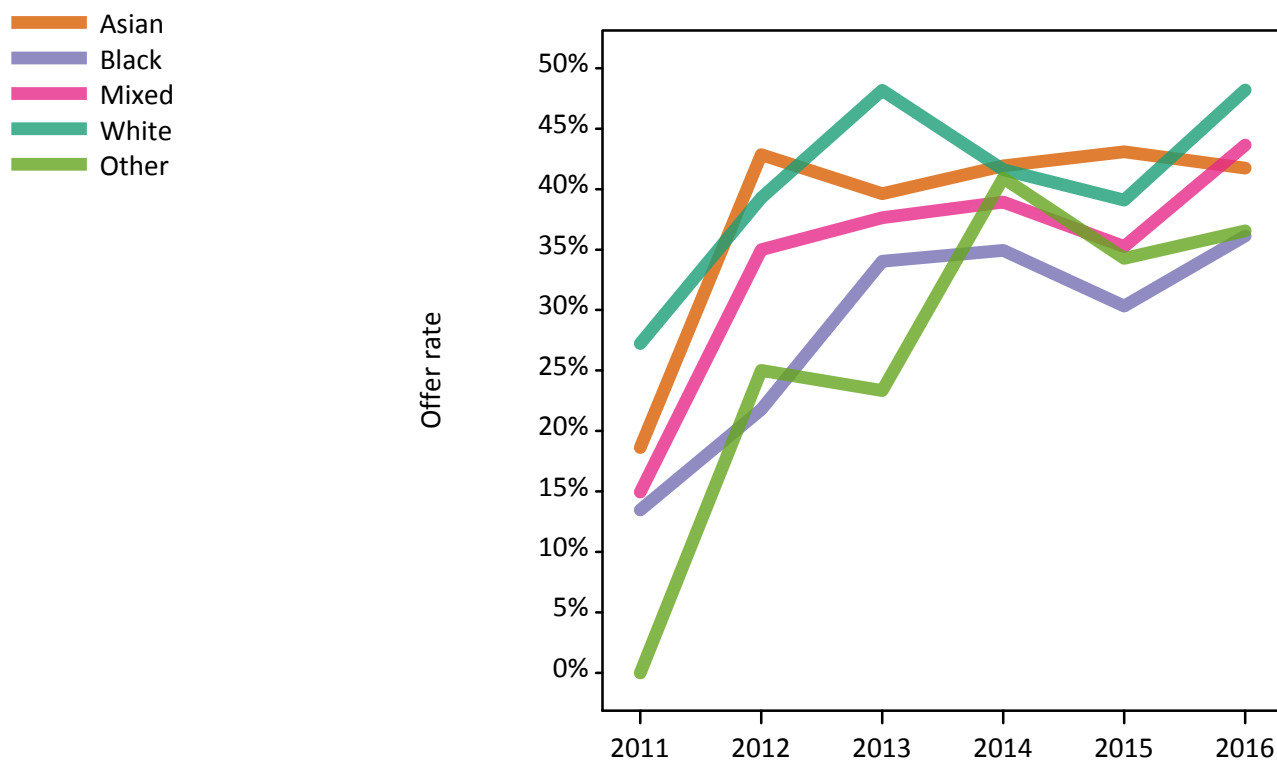


## P.12 18 year old applications by ethnic group

Statistic	Ethnic group	2011	2012	2013	2014	2015	2016
June deadline applications	Asian	100	110	105	165	125	125
	Black	155	125	145	145	155	120
	Mixed	85	80	95	115	120	110
	White	830	870	905	925	975	945
	Other	15	30	30	45	35	50
Offers	Asian	20	50	40	70	55	55
	Black	20	25	50	50	45	45
	Mixed	15	30	35	45	45	50
	White	225	340	435	385	380	455
	Other	0	10	5	20	10	20
Offer rate	Asian	18.6%	42.9%	39.6%	41.9%	43.1%	41.7%
	Black	13.5%	21.8%	34.0%	34.9%	30.3%	36.1%
	Mixed	14.9%	35.0%	37.6%	38.9%	35.2%	43.6%
	White	27.2%	39.3%	48.2%	41.6%	39.1%	48.2%
	Other	0.0%	25.0%	23.3%	40.9%	34.3%	36.5%
Average offer rate	Asian	15.1%	40.1%	42.0%	41.6%	40.2%	42.7%
	Black	16.1%	30.0%	41.9%	39.9%	37.1%	43.6%
	Mixed	23.7%	37.2%	45.9%	40.5%	38.6%	47.3%
	White	26.0%	38.1%	45.2%	40.5%	37.7%	46.3%
	Other	16.8%	31.9%	43.2%	42.0%	39.7%	44.9%
Percentage point difference between offer rate and average offer rate	Asian	3.6	2.8	-2.4	0.4	2.9	-0.9
	Black	-2.6	-8.2	-7.9	-5.0	-6.8	-7.5
	Mixed	-8.7	-2.2	-8.3	-1.6	-3.4	-3.7
	White	1.2	1.2	3.0	1.1	1.4	1.9
	Other	N/A	N/A	N/A	N/A	N/A	-8.3
Contribution of group to the average offer rate	Asian	0.164	0.214	0.215	0.238	0.214	0.189
	Black	0.207	0.195	0.200	0.186	0.192	0.159
	Mixed	0.152	0.142	0.123	0.140	0.161	0.163
	White	0.729	0.752	0.744	0.704	0.727	0.736
	Other	0.116	0.169	0.092	0.097	0.109	0.113

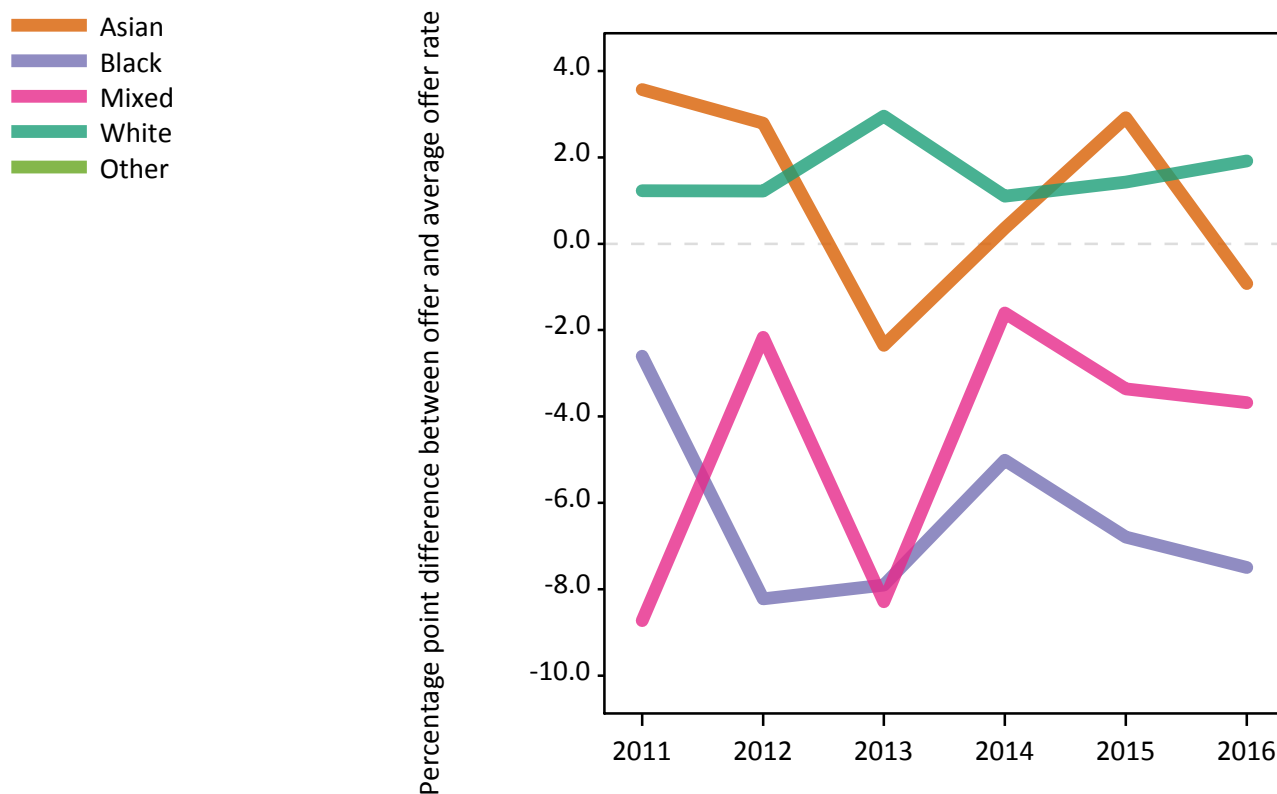
### P.13 18 year old offer rate by ethnic group

Note: The line for a group is not plotted when that group made fewer than 10 applications in any of the years from 2011-2016.



### P.14 Percentage point difference between 18 year old offer rate and average offer rate by ethnic group

Note: The line for a group is not plotted when that group made fewer than 50 applications in any of the years from 2011-2016.



### P.15 Applicants (all ages)

Statistic	2011	2012	2013	2014	2015	2016
June deadline applicants	3,125	2,885	2,725	2,945	3,005	2,810
Placed June deadline applicants	575	695	700	700	685	730
All placed applicants	650	770	795	755	775	825

### P.16 Applications (all ages)

Statistic	2011	2012	2013	2014	2015	2016
June deadline applications	3,420	3,070	2,940	3,220	3,215	2,985
Offers	895	1,180	1,265	1,265	1,220	1,375
Offer rate	26.2%	38.4%	43.0%	39.3%	38.0%	46.0%

### P.17 Applicants (all ages) by sex

Statistic	Sex	2011	2012	2013	2014	2015	2016
June deadline applicants	Men	1,580	1,500	1,455	1,520	1,415	1,310
	Women	1,540	1,385	1,275	1,430	1,595	1,500
Placed June deadline applicants	Men	390	430	420	380	335	370
	Women	185	265	285	320	350	360
All placed applicants	Men	440	480	480	415	380	420
	Women	210	290	315	340	400	405

### P.18 Applications (all ages) by sex

Statistic	Sex	2011	2012	2013	2014	2015	2016
June deadline applications	Men	1,795	1,640	1,600	1,720	1,550	1,430
	Women	1,625	1,430	1,340	1,495	1,660	1,560
Offers	Men	575	690	700	630	560	675
	Women	320	490	565	630	665	700
Offer rate	Men	32.1%	41.9%	43.8%	36.7%	36.0%	47.2%
	Women	19.7%	34.5%	42.1%	42.2%	39.9%	45.0%

### P.19 Applicants (all ages) by POLAR3 quintile

Statistic	POLAR3 quintile	2011	2012	2013	2014	2015	2016
June deadline applicants	Quintile 1	240	215	195	235	285	215
	Quintile 2	375	400	345	395	425	405
	Quintile 3	850	745	730	795	805	700
	Quintile 4	795	700	735	735	715	710
	Quintile 5	855	810	715	780	770	760
Placed June deadline applicants	Quintile 1	40	50	50	55	60	55
	Quintile 2	75	80	100	85	95	90
	Quintile 3	160	190	185	200	200	190
	Quintile 4	135	180	170	160	155	180
	Quintile 5	165	190	195	200	175	210
All placed applicants	Quintile 1	45	60	55	60	65	65
	Quintile 2	80	85	115	95	105	105
	Quintile 3	190	220	215	215	230	215
	Quintile 4	150	200	185	175	180	205
	Quintile 5	190	205	220	210	195	225

### P.20 Applications (all ages) by POLAR3 quintile

Statistic	POLAR3 quintile	2011	2012	2013	2014	2015	2016
June deadline applications	Quintile 1	260	230	210	265	305	225
	Quintile 2	410	430	380	425	460	425
	Quintile 3	935	800	785	865	865	760
	Quintile 4	870	745	790	810	755	760
	Quintile 5	940	850	775	840	820	795
Offers	Quintile 1	60	80	75	95	95	90
	Quintile 2	110	135	160	150	170	170
	Quintile 3	245	295	330	345	330	330
	Quintile 4	220	310	325	310	280	365
	Quintile 5	260	350	370	360	345	405
Offer rate	Quintile 1	23.8%	35.4%	36.5%	36.0%	31.3%	41.3%
	Quintile 2	26.8%	31.8%	42.3%	35.6%	37.1%	40.3%
	Quintile 3	26.0%	37.0%	42.0%	40.0%	38.1%	43.6%
	Quintile 4	25.1%	41.7%	41.0%	38.1%	36.8%	48.0%
	Quintile 5	27.8%	40.9%	47.9%	42.6%	42.2%	50.9%

## P.21 Applicants (all ages) by ethnic group

Statistic	Ethnic group	2011	2012	2013	2014	2015	2016
June deadline applicants	Asian	305	300	300	340	300	300
	Black	450	400	405	405	415	345
	Mixed	210	195	220	250	275	255
	White	2,055	1,885	1,690	1,815	1,890	1,745
	Other	70	80	90	115	90	125
Placed June deadline applicants	Asian	35	70	75	80	70	70
	Black	60	75	85	70	80	75
	Mixed	25	35	55	55	50	55
	White	440	490	460	470	445	490
	Other	10	15	25	20	25	30
All placed applicants	Asian	50	80	95	90	80	90
	Black	75	85	110	85	110	90
	Mixed	35	40	60	65	55	65
	White	480	525	500	490	485	525
	Other	10	20	25	20	35	35

## P.22 Applications (all ages) by ethnic group

Statistic	Ethnic group	2011	2012	2013	2014	2015	2016
June deadline applications	Asian	320	315	320	360	320	320
	Black	490	420	425	440	435	360
	Mixed	230	210	230	270	290	270
	White	2,270	2,010	1,845	2,005	2,030	1,865
	Other	75	85	95	115	95	130
Offers	Asian	60	120	135	140	145	155
	Black	85	110	150	145	135	140
	Mixed	40	65	95	100	100	115
	White	685	840	840	830	790	890
	Other	15	35	35	40	35	55
Offer rate	Asian	18.9%	37.9%	41.6%	39.4%	45.2%	48.6%
	Black	17.5%	25.7%	35.0%	32.8%	31.0%	38.7%
	Mixed	17.7%	31.4%	42.5%	36.8%	34.4%	43.3%
	White	30.2%	41.9%	45.6%	41.3%	38.9%	47.8%
	Other	21.3%	39.1%	38.5%	35.9%	37.9%	40.2%

## Technical Notes and Definitions

### UCAS undergraduate scheme

#### Adjustment

Adjustment allows applicants who have met and exceeded the terms of their conditional firm offer to seek and find a place at another provider whilst keeping their place at their original firm choice provider.

#### Clearing

Clearing is a route for applicants that are not placed and holding no offers to find a place on courses with vacancies.

#### Cycle year

The UCAS application cycle which runs from September to October the following year. For example the 2016 cycle runs from September 2015 through to October 2016.

#### End of cycle

The point in the cycle to which the numbers in this report refer, and the point at which the cycle is closed such that no more applications or offers can be made, and no more applicants can be placed. Numbers reported at the end of cycle exclude information on a small number of applicants who cancelled during the cycle.

#### Extra

Applicants who are unsuccessful in obtaining an offer or decline all offers may be eligible to apply through Extra, where they can apply to one further course at a time. Extra operates from 25 February until early July. It provides applicants who are eligible the possibility of obtaining an offer before exam results are published and Clearing starts.

#### June 30 deadline

The deadline for main scheme applications. Applicants who apply after this date will go directly into Clearing.

#### Record of Prior Acceptance (RPA)

RPA is an acceptance route used when a provider informs UCAS of applicants it has accepted outside of the normal application process (e.g. individuals who have applied directly to the provider).

### Reporting groups

#### Ethnic group

High level grouping of ethnic origin as declared by the applicant: 'White', 'Black', 'Asian', 'Mixed', 'Other', 'Unknown'. Applicants who declare themselves as 'Unknown' ethnic origin are not reported in these tables, but are included in the associated csv data file.

#### POLAR3 quintile

Developed by HEFCE, POLAR3 classifies small areas across the UK into five groups according to their level of young participation in Higher Education. Each of these groups represents around 20 per cent of young people and is ranked from Quintile 1 (areas with the lowest young participation rates, considered as the most disadvantaged) to Quintile 5 (highest young participation rates, considered most advantaged). POLAR3 is based on the participation rates of young people between 2005 and 2009 who entered Higher Education between 2005-06 and 2010-11, therefore is most suitable for applicants aged 19 and under. These groups are assigned using the postcode declared by the applicant at the time of their application. If a UK postcode is invalid, considered unsafe for measurement or there is no link to Census geography possible then the applicant is not assigned to a quintile. Applicants with no POLAR3 quintile are not reported.

#### Sex

Sex as declared by the applicant.

### **SIMD quintile**

Scottish index of multiple deprivation (SIMD) for 2012 identifies small area concentrations of multiple deprivation across all of Scotland, providing a relative measure of deprivation amongst 6505 small areas (data zones) based on 7 socio-economic domains. These small areas are classified into five groups ranked from Quintile 1 (considered the most deprived) to Quintile 5 (considered least deprived), with equal populations in each quintile. Quintiles are assigned using the postcode declared by the applicant, applicants declaring invalid postcodes are classified as 'Not assigned' and are not reported.

SIMD is only defined for applicants domiciled in Scotland, therefore any applicants domiciled outside of Scotland cannot be assigned to an SIMD quintile and so are not reported for this measure.

SIMD is only reported for providers in Scotland. Application and entry rates by SIMD are reported in the 2016 End of Cycle Report and the 2016 cycle January deadline application rate report.

### **Statistics reported in the tables**

#### **All placed applicants**

The number of applicants placed for entry into higher education at the provider through one of their choices, including any choices made through Extra, or via Adjustment, Clearing or RPA.

#### **All placed applicants per 10,000 population**

The number of total UK domiciled 18 year old placed applicants for entry into higher education at the provider divided by the number of UK 18 year olds in the population, multiplied by 10,000. This gives the number of 18 year olds, for every 10,000 in the population, that were placed at the provider through one of their choices, including any choices made through Extra, or via Adjustment, Clearing or RPA. It is an alternative way of expressing the entry rate to a provider. By referencing the underlying population this statistic shows how the number of placed applicants is changing in relation to the available pool of potential applicants and so gives the chance that somebody from the group will be placed at a provider.

This statistic is only reported for 18 year olds.

#### **Average offer rate**

The offer rate that you might expect if the predicted grades and subject choice of applicants were the only factors that influenced whether an applicant was made an offer by the provider. The average offer rate is calculated by dividing applicants according to their specific combination of grades (for A levels the best three predicted grades are used, for BTECs, International Baccalaureate and Scottish Highers and Advanced Highers, predicted grades along with any grades already achieved upon applying are used) and subject choice. For each combination the number of main scheme offers is divided by the number of main scheme applications, to give an overall offer rate. This is then multiplied by the number of applications made by the group for which the average offer rate is being calculated (for example POLAR3 quintile 1), to give an average number of offers for that group. These average number of offers are then added together across all combinations of predicted grade and subject and divided by the number of main scheme applications from the group to give the average offer rate.

The average offer rate does not attempt to control for any other factors that may play a part in the decision to make an offer, such as the subject of the qualifications studied, their relevance to a course, or the grade in each subject; higher numbers of A levels being studied; the exact profile of grades predicted; personal statements; teacher references; interviews; or any other criteria (such as work experience or portfolios) that may be part of the admissions decision.

This statistic is only reported for 18 year olds.



### Contribution of group to the average offer rate

The way in which the average offer rate is defined means that the pattern of application and offers of a group (for example POLAR3 quintile 1) will always contribute, in part, to the average offer rate for that group. When this contribution is large, the average offer rate will mainly reflect the patterns for the group, meaning that the value of the average offer rate will be similar to the offer rate, the percentage point difference statistic will be small, and any real difference between the offer rate and what might be expected given the predicted grades and subject choices of the applicants will be difficult to detect.

Values of the contribution of group to the average offer rate range between 0 and 1. The closer the value is to 1 the greater the contribution a group makes to its own average offer rate.

This statistic is only reported for 18 year olds.

### Placed June deadline applicants

An applicant who has been placed for entry into higher education at the provider through a June deadline application.

### Placed June deadline applicants per 10,000 population

The number of UK domiciled 18 year old placed June deadline applicants at the provider divided by the number of UK 18 year olds in the population, multiplied by 10,000. This gives the number of 18 year olds, for every 10,000 in the population, that were placed at the provider through one of their June deadline applications. It is an alternative way of expressing the entry rate to a provider, but for placed June deadline applicants only. By referencing the underlying population this statistic shows how the number of placed June deadline applicants is changing in relation to the available pool of potential 18 year old applicants and so gives the chance that somebody from the group will be placed at a provider through a June deadline application.

This statistic is only reported for 18 year olds.

### June deadline applications

An application (or choice) to a course in higher education to the provider that is made by the June 30 deadline. Each applicant can make up to five choices this way. The number of June deadline applications does not include choices made through the following routes: Clearing, Extra, Adjustment and RPAs. Applications made to October deadline courses received after the October deadline are not included in these statistics.

### June deadline applicants

The number of applicants that made at least one application to the provider by the June 30 deadline.

### June deadline applicants per 10,000 population

The number of UK domiciled 18 year old June deadline applicants to the provider divided by the number of UK 18 year olds in the population, multiplied by 10,000. This gives the number of 18 year olds, for every 10,000 in the population, who applied by the June 30 deadline. It is equivalent to the application rate. By referencing the underlying population this statistic shows how the number of June deadline applicants is changing in relation to the available pool of potential 18 year old applicants and so gives the chance that somebody from the group will apply to a provider by the June 30 deadline.

This statistic is only reported for 18 year olds.

### Offers

An offer is defined as a provider's decision in response to an application to offer a place to an applicant, often subject to the applicant satisfying academic and/or other criteria, via a June deadline application (i.e. does not cover choices made through the following routes: Clearing, Extra, Adjustment and RPAs).

### Offer rate

The number of offers made divided by the number of June deadline applications. This gives the proportion of all June deadline applications to the provider that received an offer.

### Percentage point difference between offer rate and average offer rate

The offer rate minus the average offer rate.

The percentage point difference can be compared to the expected range of statistical variation resulting from the calculation of the average offer rate using the Average Offer Rate Lookup Table. Where the value of the percentage point difference lies outside of this range, the percentage point difference may be considered to represent a real difference between the offer rate and the average offer rate.

### Other definitions

#### Age

This analysis uses country-specific age definitions that align with the cut off points for school and college cohorts within the different administrations of the UK. For England and Wales, ages are defined on the 31 August, for Northern Ireland on the 1 July and for Scotland on the 28 February the following year. Defining ages in this way matches the assignment of children to school cohorts. For applicants outside of the UK a cohort cut off of 31 August has been used.

#### Provider

A higher education provider - a university or college.

#### UK domiciled

Declared area of permanent residence within England, Northern Ireland, Scotland and Wales. Applicants from the Channel Islands and Isle of Man are not included.