

## S78 The University of Strathclyde

**Cycle years:** 2011 - 2016

**Cycle Reference Point:** End of Cycle

**Applicant coverage:** UK domiciled

**Reporting groups:** Sex, POLAR3, SIMD, ethnic group

**Applicant statistics:** June deadline applicants, placed June deadline applicants, all placed applicants, June deadline applicants per 10,000 population, placed June deadline applicants per 10,000 population, all placed applicants per 10,000 population

**Application statistics:** June deadline applications, offers, offer rate, average offer rate, percentage point difference between offer rate and average offer rate, contribution of group to the average offer rate

**Non-disclosure controls:** To avoid the disclosure of information about any individual the following measures are taken

- Applicants, placed applicants, applications and offers are rounded to the nearest 5.
- Applicants/placed applicants per 10,000 population figures are reported as 0 if the applicant/placed applicant figures are rounded to 0.
- All statistics related to the offer rate are not reported when the number of applications for a group is less than 10. The percentage point difference between the offer rate and the average offer rate is not reported when the number of applications for a group is less than 50.
- Offer rates are reported as 0% if there are fewer than 5 offers, and 100% if the number of offers is within 5 of the number of applications. When the offer rate is reported as 0% or 100%, it is reported in italics.

### Contents:

18 year old applicants:	P.1
18 year old applications:	P.2
18 year old applicants by sex:	P.3
18 year old applications by sex:	P.4
18 year old applicants by POLAR3 quintile:	P.7
18 year old applications by POLAR3 quintile:	P.8
18 year old, Scotland domiciled applicants by SIMD quintile:	P.11
18 year old, Scotland domiciled applications by SIMD quintile:	P.12
18 year old applicants by ethnic group:	P.15
18 year old applications by ethnic group:	P.16
Applicants (all ages):	P.19
Applications (all ages):	P.20
Applicants (all ages) by sex:	P.21
Applications (all ages) by sex:	P.22
Applicants (all ages) by POLAR3 quintile:	P.23
Applications (all ages) by POLAR3 quintile:	P.24
Scotland domiciled applicants (all ages) by SIMD quintile:	P.25
Scotland domiciled applications (all ages) by SIMD quintile:	P.26
Applicants (all ages) by ethnic group:	P.27
Applications (all ages) by ethnic group:	P.28

## P.1 18 year old applicants

Statistic	2011	2012	2013	2014	2015	2016
June deadline applicants	7,885	6,910	6,710	7,420	8,030	8,265
Placed June deadline applicants	1,740	1,710	1,830	1,995	2,080	2,035
All placed applicants	1,800	1,795	1,915	2,060	2,155	2,100
June deadline applicants per 10,000 population	102.4	89.3	88.2	98.5	104.8	110.3
Placed June deadline applicants per 10,000	22.6	22.1	24.0	26.5	27.1	27.1
All placed applicants per 10,000 population	23.4	23.2	25.2	27.4	28.1	28.0

## P.2 18 year old applications

Statistic	2011	2012	2013	2014	2015	2016
June deadline applications	11,015	9,290	9,065	10,200	11,250	11,385
Offers	6,585	6,295	6,775	7,310	7,705	7,260
Offer rate	59.8%	67.8%	74.8%	71.7%	68.5%	63.8%

### P.3 18 year old applicants by sex

Statistic	Sex	2011	2012	2013	2014	2015	2016
June deadline applicants	Men	3,720	3,270	3,310	3,500	3,820	3,730
	Women	4,170	3,640	3,405	3,920	4,210	4,535
Placed June deadline applicants	Men	890	840	960	1,005	1,030	975
	Women	850	870	870	995	1,050	1,060
All placed applicants	Men	925	890	1,015	1,040	1,075	1,010
	Women	875	905	900	1,020	1,080	1,095
June deadline applicants per 10,000 population	Men	94.5	82.5	84.8	90.4	97.3	97.1
	Women	110.7	96.5	91.8	107.1	112.7	124.2
Placed June deadline applicants per 10,000 population	Men	22.7	21.2	24.6	25.9	26.2	25.3
	Women	22.5	23.1	23.5	27.1	28.1	29.0
All placed applicants per 10,000 population	Men	23.5	22.5	26.0	26.9	27.4	26.3
	Women	23.3	24.0	24.3	27.9	28.9	29.9

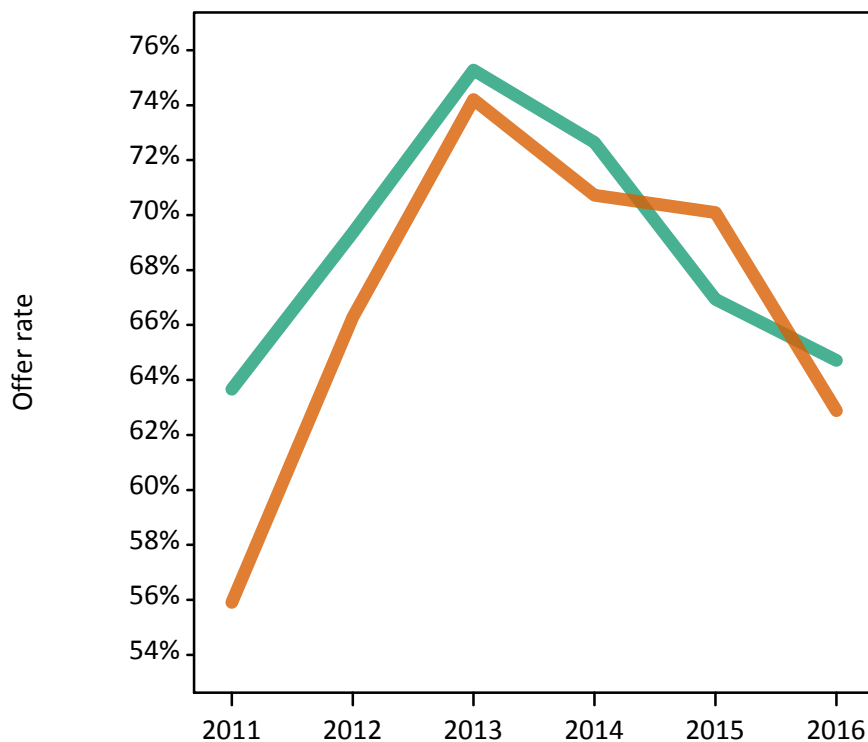
### P.4 18 year old applications by sex

Statistic	Sex	2011	2012	2013	2014	2015	2016
June deadline applications	Men	5,470	4,535	4,645	5,075	5,705	5,420
	Women	5,545	4,750	4,420	5,125	5,545	5,965
Offers	Men	3,485	3,145	3,495	3,685	3,820	3,510
	Women	3,100	3,150	3,280	3,625	3,885	3,750
Offer rate	Men	63.7%	69.4%	75.3%	72.6%	66.9%	64.7%
	Women	55.9%	66.3%	74.2%	70.7%	70.1%	62.9%
Average offer rate	Men	64.5%	70.3%	76.2%	74.2%	69.3%	66.3%
	Women	55.1%	65.4%	73.2%	69.2%	67.7%	61.4%
Percentage point difference between offer rate and average offer rate	Men	-0.9	-0.9	-0.9	-1.5	-2.3	-1.6
	Women	0.8	0.9	1.0	1.5	2.4	1.5
Contribution of group to the average offer rate	Men	0.641	0.634	0.647	0.641	0.641	0.619
	Women	0.646	0.650	0.629	0.644	0.631	0.654

### P.5 18 year old offer rate by sex

Note: The line for a group is not plotted when that group made fewer than 10 applications in any of the years from 2011-2016.

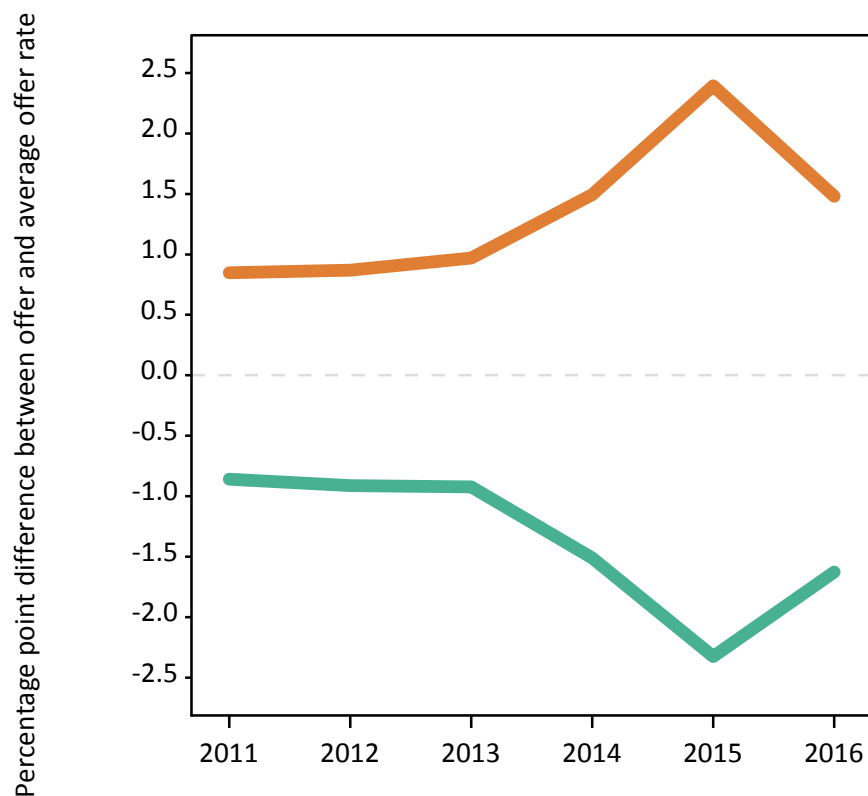
Men  
Women



### P.6 Percentage point difference between 18 year old offer rate and average offer rate by sex

Note: The line for a group is not plotted when that group made fewer than 50 applications in any of the years from 2011-2016.

Men  
Women



## P.7 18 year old applicants by POLAR3 quintile

Statistic	POLAR3 quintile	2011	2012	2013	2014	2015	2016
June deadline applicants	Quintile 1	280	265	255	360	345	390
	Quintile 2	845	715	710	770	925	895
	Quintile 3	1,170	1,120	1,015	1,155	1,190	1,325
	Quintile 4	1,815	1,505	1,515	1,695	1,855	1,875
	Quintile 5	3,760	3,300	3,210	3,430	3,700	3,745
Placed June deadline applicants	Quintile 1	35	50	55	70	70	75
	Quintile 2	165	150	155	160	215	200
	Quintile 3	225	265	265	295	270	310
	Quintile 4	370	355	405	420	450	460
	Quintile 5	945	885	945	1,050	1,065	990
All placed applicants	Quintile 1	35	55	55	75	75	80
	Quintile 2	175	165	165	170	225	215
	Quintile 3	235	275	275	300	285	320
	Quintile 4	380	370	420	430	475	475
	Quintile 5	970	930	1,000	1,085	1,090	1,015
June deadline applicants per 10,000 population	Quintile 1	19.5	18.5	18.4	25.7	24.8	28.7
	Quintile 2	56.1	47.6	48.3	52.6	62.3	61.9
	Quintile 3	76.1	72.5	66.4	76.6	77.6	88.2
	Quintile 4	115.9	95.0	96.8	109.9	118.4	121.4
	Quintile 5	227.3	196.3	194.1	210.2	221.1	226.7
Placed June deadline applicants per 10,000 population	Quintile 1	2.5	3.7	3.9	5.2	5.1	5.6
	Quintile 2	11.0	10.1	10.7	10.9	14.6	13.8
	Quintile 3	14.5	17.2	17.3	19.7	17.6	20.5
	Quintile 4	23.6	22.3	25.9	27.3	28.9	29.7
	Quintile 5	57.0	52.7	57.3	64.3	63.6	59.9
All placed applicants per 10,000 population	Quintile 1	2.5	3.8	4.0	5.5	5.3	5.8
	Quintile 2	11.7	10.9	11.2	11.5	15.2	14.7
	Quintile 3	15.1	17.9	18.1	20.0	18.6	21.3
	Quintile 4	24.3	23.3	26.8	27.9	30.4	30.6
	Quintile 5	58.7	55.4	60.4	66.5	65.1	61.4

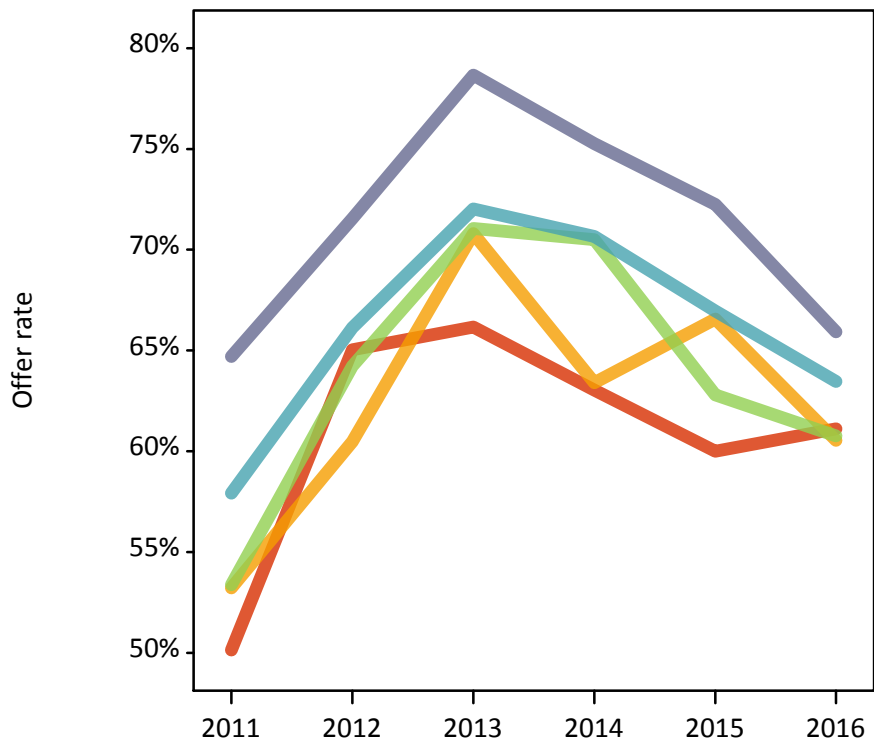
## P.8 18 year old applications by POLAR3 quintile

Statistic	POLAR3 quintile	2011	2012	2013	2014	2015	2016
June deadline applications	Quintile 1	365	350	330	470	450	505
	Quintile 2	1,195	980	940	1,065	1,285	1,215
	Quintile 3	1,645	1,505	1,395	1,585	1,670	1,800
	Quintile 4	2,505	1,995	2,015	2,305	2,605	2,615
	Quintile 5	5,290	4,450	4,365	4,760	5,235	5,205
Offers	Quintile 1	185	225	215	295	270	310
	Quintile 2	635	590	665	675	855	735
	Quintile 3	875	965	990	1,115	1,050	1,095
	Quintile 4	1,450	1,320	1,450	1,630	1,745	1,660
	Quintile 5	3,420	3,185	3,435	3,585	3,780	3,435
Offer rate	Quintile 1	50.1%	65.0%	66.2%	63.0%	60.0%	61.1%
	Quintile 2	53.2%	60.5%	70.8%	63.4%	66.6%	60.5%
	Quintile 3	53.4%	64.2%	71.1%	70.5%	62.8%	60.8%
	Quintile 4	57.9%	66.1%	72.0%	70.7%	67.0%	63.5%
	Quintile 5	64.7%	71.5%	78.7%	75.3%	72.3%	65.9%
Average offer rate	Quintile 1	54.9%	66.7%	67.4%	67.0%	65.5%	62.4%
	Quintile 2	56.5%	63.6%	72.0%	67.9%	67.3%	61.5%
	Quintile 3	56.7%	66.7%	73.5%	70.9%	66.2%	62.2%
	Quintile 4	58.9%	67.9%	73.7%	71.1%	68.6%	65.0%
	Quintile 5	62.1%	69.1%	76.8%	73.5%	69.7%	64.3%
Percentage point difference between offer rate and average offer rate	Quintile 1	-4.7	-1.7	-1.2	-3.9	-5.5	-1.3
	Quintile 2	-3.3	-3.1	-1.2	-4.5	-0.7	-1.0
	Quintile 3	-3.3	-2.4	-2.4	-0.4	-3.4	-1.5
	Quintile 4	-1.0	-1.8	-1.7	-0.4	-1.6	-1.5
	Quintile 5	2.6	2.4	1.9	1.7	2.5	1.6
Contribution of group to the average offer rate	Quintile 1	0.110	0.093	0.117	0.123	0.099	0.120
	Quintile 2	0.154	0.155	0.150	0.155	0.160	0.150
	Quintile 3	0.191	0.203	0.192	0.188	0.188	0.200
	Quintile 4	0.270	0.253	0.257	0.260	0.265	0.265
	Quintile 5	0.513	0.513	0.514	0.500	0.498	0.491

### P.9 18 year old offer rate by POLAR3 quintile

Note: The line for a group is not plotted when that group made fewer than 10 applications in any of the years from 2011-2016.

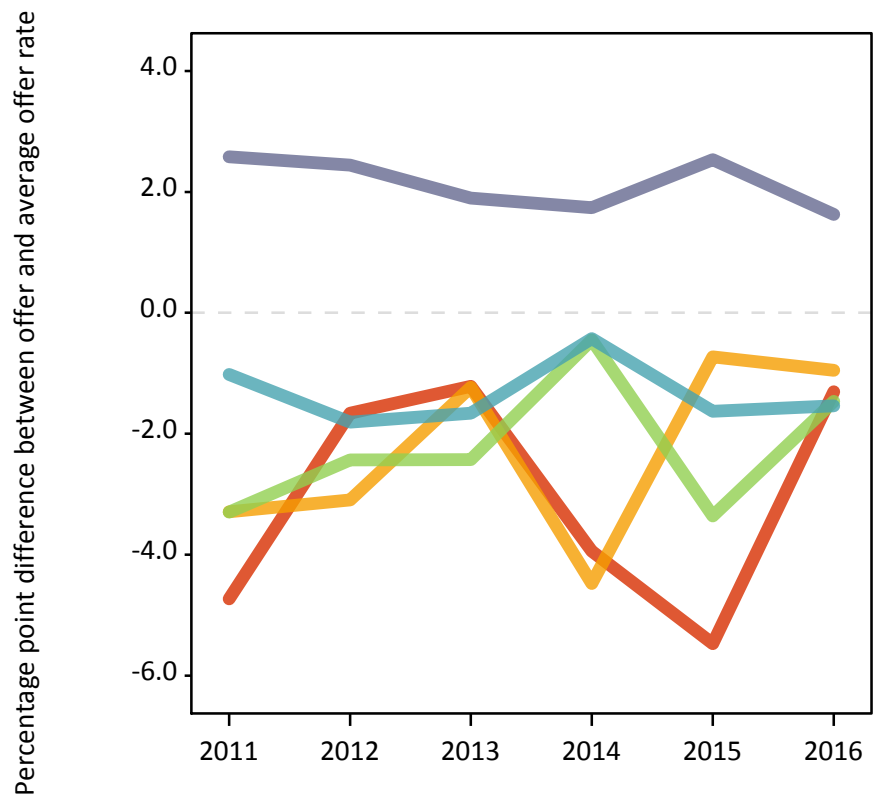
- Quintile 1
- Quintile 2
- Quintile 3
- Quintile 4
- Quintile 5



### P.10 Percentage point difference between 18 year old offer rate and average offer rate by POLAR3 quintile

Note: The line for a group is not plotted when that group made fewer than 50 applications in any of the years from 2011-2016.

- Quintile 1
- Quintile 2
- Quintile 3
- Quintile 4
- Quintile 5



**P.11 18 year old, Scotland domiciled applicants by SIMD quintile**

Statistic	SIMD quintile	2011	2012	2013	2014	2015	2016
June deadline applicants	Quintile 1	710	650	660	840	810	900
	Quintile 2	990	875	890	980	1,030	1,065
	Quintile 3	1,285	1,215	1,180	1,225	1,365	1,350
	Quintile 4	1,645	1,445	1,410	1,550	1,730	1,720
	Quintile 5	2,525	2,295	2,145	2,300	2,525	2,505
Placed June deadline applicants	Quintile 1	130	140	150	190	205	205
	Quintile 2	205	215	250	240	270	300
	Quintile 3	265	315	320	345	355	320
	Quintile 4	410	370	395	445	460	425
	Quintile 5	675	630	670	740	745	715
All placed applicants	Quintile 1	135	150	150	200	215	215
	Quintile 2	220	235	255	250	280	305
	Quintile 3	275	325	340	350	365	330
	Quintile 4	425	385	415	460	470	435
	Quintile 5	690	665	700	760	760	725
June deadline applicants per 10,000 population	Quintile 1	533.4	498.3	501.8	642.3	635.8	725.3
	Quintile 2	824.2	742.7	759.0	845.3	909.2	959.5
	Quintile 3	1,045.2	1,005.5	992.4	1,035.5	1,177.9	1,193.5
	Quintile 4	1,317.1	1,162.6	1,139.8	1,251.7	1,410.4	1,427.2
	Quintile 5	1,982.5	1,823.6	1,721.1	1,858.8	2,066.9	2,099.8
Placed June deadline applicants per 10,000 population	Quintile 1	95.9	108.7	113.6	144.9	159.9	164.2
	Quintile 2	169.0	184.4	211.7	208.5	239.6	269.1
	Quintile 3	215.9	262.3	270.3	291.3	305.3	284.5
	Quintile 4	326.9	296.1	320.7	360.4	376.0	354.5
	Quintile 5	528.2	501.7	539.2	597.2	608.4	600.5
All placed applicants per 10,000 population	Quintile 1	100.4	114.8	115.9	151.0	167.0	171.5
	Quintile 2	181.5	198.8	217.7	214.6	247.6	275.4
	Quintile 3	223.2	269.8	283.8	296.3	313.0	292.4
	Quintile 4	339.7	310.6	336.0	370.9	384.2	359.5
	Quintile 5	540.0	528.7	563.3	614.2	620.7	608.9

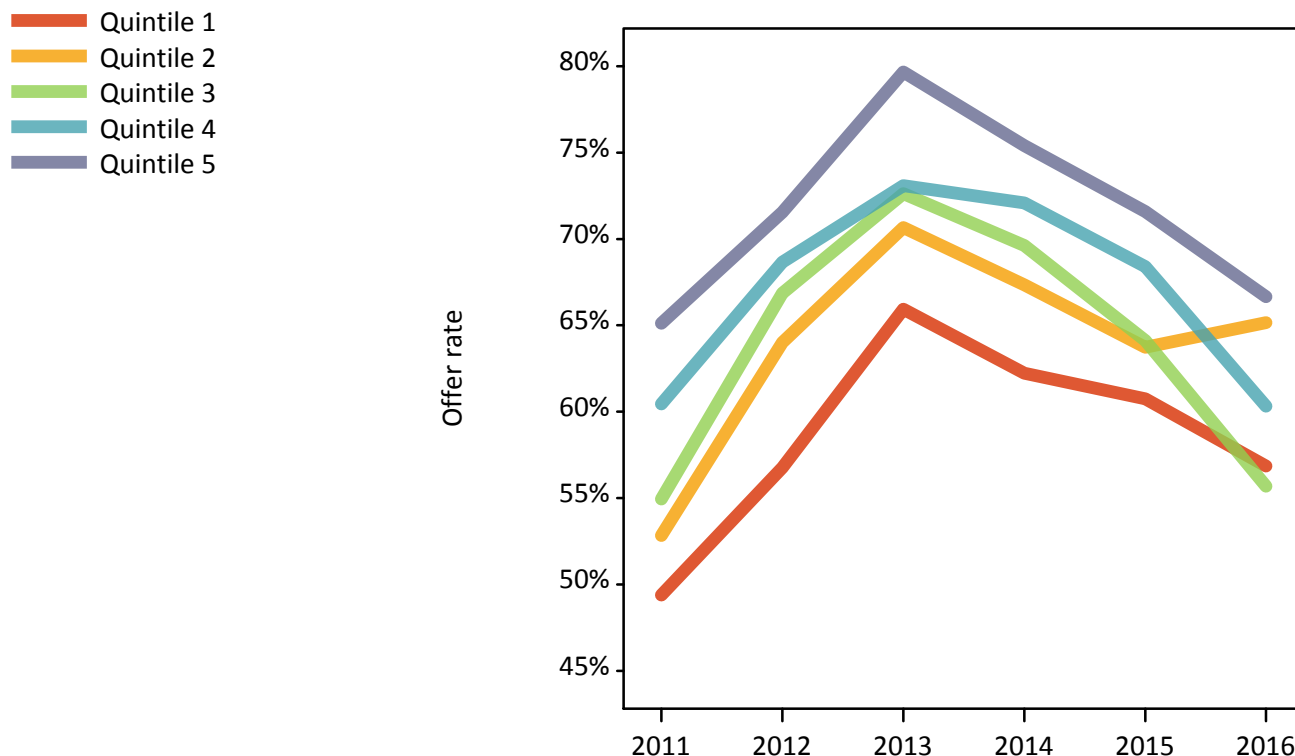


**P.12 18 year old, Scotland domiciled applications by SIMD quintile**

Statistic	SIMD quintile	2011	2012	2013	2014	2015	2016
June deadline applications	Quintile 1	1,050	915	920	1,195	1,170	1,305
	Quintile 2	1,450	1,205	1,215	1,385	1,510	1,505
	Quintile 3	1,800	1,655	1,635	1,725	1,925	1,900
	Quintile 4	2,310	1,935	1,920	2,140	2,455	2,395
	Quintile 5	3,650	3,130	2,930	3,215	3,610	3,525
Offers	Quintile 1	520	520	605	745	710	745
	Quintile 2	765	770	860	935	965	980
	Quintile 3	990	1,105	1,185	1,200	1,235	1,060
	Quintile 4	1,395	1,330	1,405	1,540	1,680	1,445
	Quintile 5	2,375	2,240	2,335	2,425	2,585	2,350
Offer rate	Quintile 1	49.4%	56.8%	65.9%	62.2%	60.7%	56.8%
	Quintile 2	52.8%	64.0%	70.7%	67.3%	63.7%	65.2%
	Quintile 3	54.9%	66.9%	72.6%	69.6%	64.1%	55.7%
	Quintile 4	60.4%	68.7%	73.1%	72.1%	68.4%	60.3%
	Quintile 5	65.1%	71.6%	79.7%	75.4%	71.6%	66.7%
Average offer rate	Quintile 1	54.6%	63.5%	68.9%	66.5%	64.1%	59.4%
	Quintile 2	56.1%	65.8%	72.6%	69.6%	65.0%	60.3%
	Quintile 3	56.5%	67.7%	73.2%	69.5%	66.7%	61.2%
	Quintile 4	59.2%	67.3%	73.6%	71.6%	68.1%	62.2%
	Quintile 5	62.3%	69.3%	77.3%	73.3%	68.8%	63.6%
Percentage point difference between offer rate and average offer rate	Quintile 1	-5.2	-6.8	-3.0	-4.3	-3.3	-2.5
	Quintile 2	-3.3	-1.8	-2.0	-2.3	-1.2	4.9
	Quintile 3	-1.6	-0.9	-0.6	0.1	-2.5	-5.5
	Quintile 4	1.2	1.4	-0.5	0.5	0.3	-1.9
	Quintile 5	2.9	2.3	2.4	2.2	2.7	3.1
Contribution of group to the average offer rate	Quintile 1	0.130	0.132	0.135	0.155	0.133	0.154
	Quintile 2	0.164	0.160	0.164	0.168	0.168	0.163
	Quintile 3	0.189	0.206	0.205	0.199	0.198	0.194
	Quintile 4	0.242	0.232	0.237	0.237	0.243	0.239
	Quintile 5	0.380	0.379	0.367	0.358	0.364	0.355

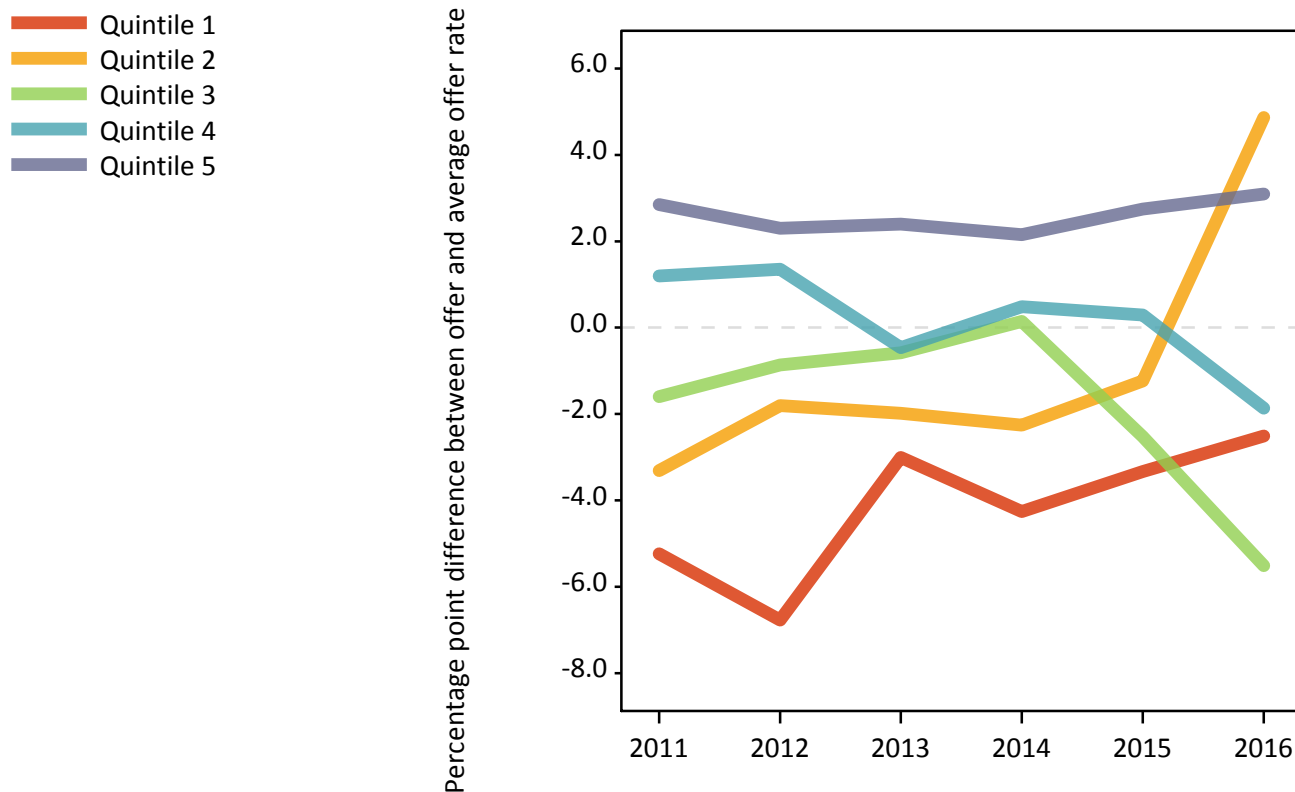
**P.13 18 year old, Scotland domiciled offer rate by SIMD quintile**

Note: The line for a group is not plotted when that group made fewer than 10 applications in any of the years from 2011-2016.



**P.14 Percentage point difference between 18 year old, Scotland domiciled offer rate and average offer rate by SIMD quintile**

Note: The line for a group is not plotted when that group made fewer than 50 applications in any of the years from 2011-2016.



## P.15 18 year old applicants by ethnic group

Statistic	Ethnic group	2011	2012	2013	2014	2015	2016
June deadline applicants	Asian	335	350	335	395	420	465
	Black	35	35	35	40	55	65
	Mixed	115	80	90	110	140	150
	White	7,365	6,415	6,215	6,825	7,365	7,495
	Other	20	15	25	35	30	40
Placed June deadline applicants	Asian	65	65	80	95	95	105
	Black	5	5	5	5	10	10
	Mixed	20	20	20	25	30	30
	White	1,645	1,615	1,720	1,860	1,935	1,870
	Other	5	0	5	10	5	10
All placed applicants	Asian	65	70	85	100	105	110
	Black	5	10	5	5	10	15
	Mixed	20	20	25	25	35	35
	White	1,705	1,690	1,795	1,915	1,995	1,925
	Other	5	0	5	10	10	10
June deadline applicants per 10,000 population	Asian	53.3	54.0	50.9	58.5	59.3	64.5
	Black	12.8	13.1	12.1	12.9	16.7	20.1
	Mixed	47.9	29.9	32.5	37.5	44.8	47.4
	White	113.7	99.4	98.8	110.6	118.2	123.9
	Other	25.9	19.2	25.4	35.5	33.2	41.3
Placed June deadline applicants per 10,000 population	Asian	10.0	9.7	12.0	14.2	13.1	14.9
	Black	1.1	2.5	1.3	1.3	3.5	3.2
	Mixed	8.3	7.7	7.8	8.3	10.4	10.2
	White	25.4	25.0	27.3	30.1	31.1	30.9
	Other	3.7	0.0	3.3	9.7	7.3	8.1
All placed applicants per 10,000 population	Asian	10.5	10.8	13.2	15.0	14.7	15.6
	Black	1.1	3.2	1.3	1.3	3.8	4.2
	Mixed	8.7	8.1	8.5	8.7	11.4	10.5
	White	26.3	26.2	28.5	31.1	32.0	31.8
	Other	4.9	0.0	3.3	10.7	9.3	10.1

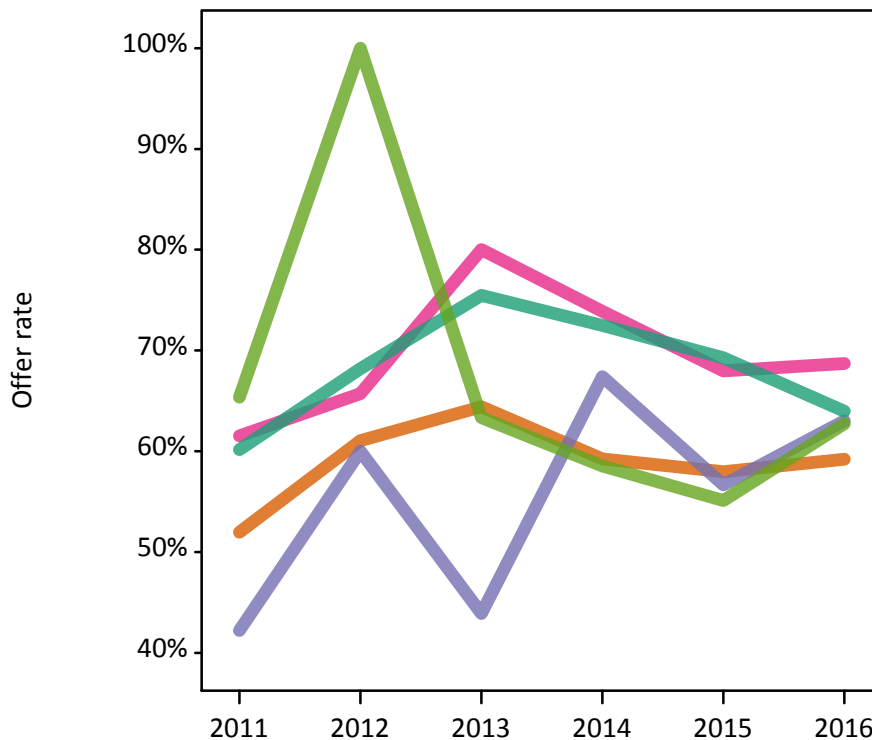
## P.16 18 year old applications by ethnic group

Statistic	Ethnic group	2011	2012	2013	2014	2015	2016
June deadline applications	Asian	505	490	475	550	615	695
	Black	45	45	40	45	60	75
	Mixed	145	105	110	135	180	180
	White	10,275	8,615	8,390	9,405	10,325	10,320
	Other	25	20	30	40	50	50
Offers	Asian	265	300	305	325	355	410
	Black	20	25	20	30	35	45
	Mixed	90	70	90	100	120	125
	White	6,180	5,875	6,330	6,815	7,155	6,600
	Other	15	15	20	25	25	30
Offer rate	Asian	52.0%	61.1%	64.4%	59.2%	58.0%	59.2%
	Black	42.2%	60.0%	43.9%	67.4%	56.7%	63.0%
	Mixed	61.5%	65.7%	80.0%	73.9%	68.0%	68.7%
	White	60.1%	68.2%	75.5%	72.5%	69.3%	64.0%
	Other	65.4%	100.0%	63.3%	58.5%	55.1%	62.7%
Average offer rate	Asian	59.5%	67.6%	70.8%	66.2%	65.3%	62.0%
	Black	49.6%	65.6%	59.8%	68.7%	63.4%	59.2%
	Mixed	61.0%	68.6%	80.3%	74.8%	68.0%	68.3%
	White	59.8%	67.8%	75.0%	72.0%	68.7%	63.8%
	Other	60.4%	79.6%	76.1%	59.2%	68.0%	67.7%
Percentage point difference between offer rate and average offer rate	Asian	-7.5	-6.5	-6.4	-7.0	-7.3	-2.7
	Black	N/A	N/A	N/A	N/A	-6.7	3.8
	Mixed	0.5	-2.9	-0.3	-0.9	-0.0	0.4
	White	0.4	0.4	0.5	0.4	0.6	0.2
	Other	N/A	N/A	N/A	N/A	N/A	-4.9
Contribution of group to the average offer rate	Asian	0.137	0.121	0.149	0.124	0.136	0.132
	Black	0.123	0.067	0.145	0.155	0.134	0.144
	Mixed	0.074	0.075	0.107	0.082	0.102	0.094
	White	0.939	0.934	0.934	0.929	0.926	0.916
	Other	0.018	0.070	0.077	0.136	0.102	0.117

**P.17 18 year old offer rate by ethnic group**

Note: The line for a group is not plotted when that group made fewer than 10 applications in any of the years from 2011-2016.

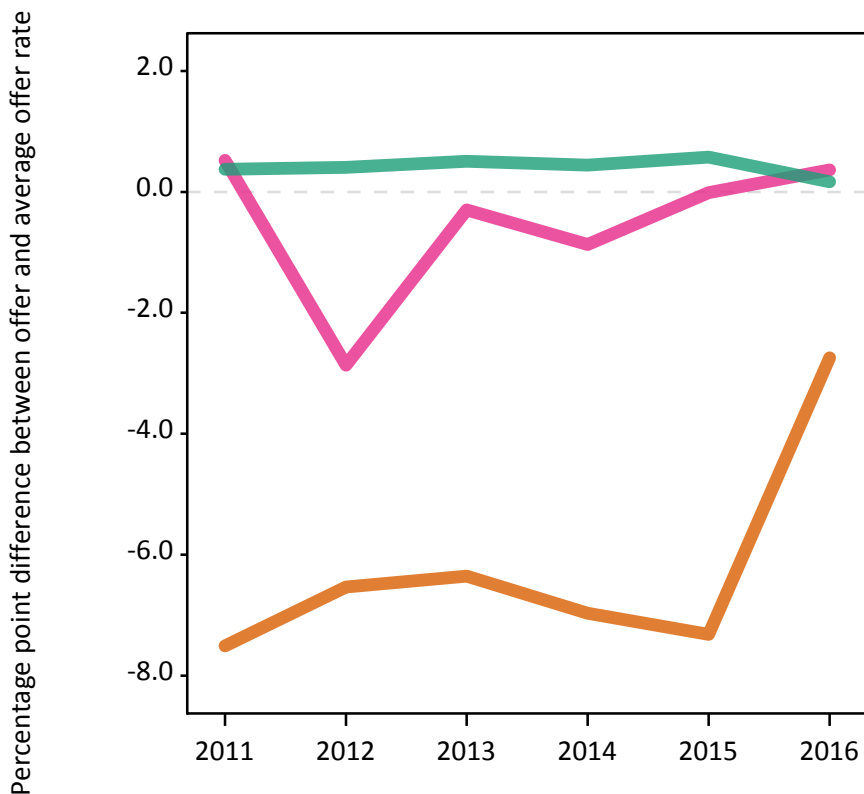
- Asian
- Black
- Mixed
- White
- Other



**P.18 Percentage point difference between 18 year old offer rate and average offer rate by ethnic group**

Note: The line for a group is not plotted when that group made fewer than 50 applications in any of the years from 2011-2016.

- Asian
- Black
- Mixed
- White
- Other



### P.19 Applicants (all ages)

Statistic	2011	2012	2013	2014	2015	2016
June deadline applicants	13,420	12,040	11,985	13,185	17,105	18,250
Placed June deadline applicants	2,470	2,465	2,620	2,920	3,695	3,755
All placed applicants	2,580	2,630	2,795	3,065	3,885	3,935

### P.20 Applications (all ages)

Statistic	2011	2012	2013	2014	2015	2016
June deadline applications	18,225	15,640	15,715	17,825	22,675	24,050
Offers	9,125	8,840	9,855	10,595	11,815	11,500
Offer rate	50.1%	56.5%	62.7%	59.4%	52.1%	47.8%

### P.21 Applicants (all ages) by sex

Statistic	Sex	2011	2012	2013	2014	2015	2016
June deadline applicants	Men	6,260	5,730	5,920	6,280	7,575	7,890
	Women	7,160	6,310	6,065	6,905	9,530	10,360
Placed June deadline applicants	Men	1,270	1,235	1,400	1,470	1,685	1,705
	Women	1,200	1,230	1,220	1,450	2,010	2,055
All placed applicants	Men	1,325	1,345	1,500	1,555	1,780	1,795
	Women	1,255	1,285	1,295	1,510	2,105	2,140

### P.22 Applications (all ages) by sex

Statistic	Sex	2011	2012	2013	2014	2015	2016
June deadline applications	Men	8,830	7,695	8,060	8,875	10,650	10,930
	Women	9,395	7,945	7,655	8,950	12,025	13,125
Offers	Men	4,825	4,530	5,190	5,420	5,705	5,515
	Women	4,305	4,305	4,665	5,175	6,110	5,980
Offer rate	Men	54.6%	58.9%	64.4%	61.1%	53.5%	50.5%
	Women	45.8%	54.2%	61.0%	57.8%	50.8%	45.6%

### P.23 Applicants (all ages) by POLAR3 quintile

Statistic	POLAR3 quintile	2011	2012	2013	2014	2015	2016
June deadline applicants	Quintile 1	680	620	650	775	1,005	1,080
	Quintile 2	1,665	1,480	1,480	1,595	2,175	2,220
	Quintile 3	2,140	2,015	1,895	2,160	2,735	3,040
	Quintile 4	2,980	2,625	2,690	2,990	3,850	4,145
	Quintile 5	5,925	5,270	5,240	5,640	7,300	7,670
Placed June deadline applicants	Quintile 1	75	105	90	130	180	190
	Quintile 2	265	255	260	280	410	430
	Quintile 3	335	385	390	440	535	600
	Quintile 4	520	530	580	635	810	825
	Quintile 5	1,265	1,185	1,290	1,435	1,755	1,700
All placed applicants	Quintile 1	75	115	95	135	190	200
	Quintile 2	280	275	275	300	435	455
	Quintile 3	350	405	415	460	565	635
	Quintile 4	545	565	605	660	860	855
	Quintile 5	1,320	1,265	1,395	1,510	1,830	1,770

### P.24 Applications (all ages) by POLAR3 quintile

Statistic	POLAR3 quintile	2011	2012	2013	2014	2015	2016
June deadline applications	Quintile 1	875	790	820	1,015	1,295	1,380
	Quintile 2	2,290	1,955	1,915	2,140	2,835	2,900
	Quintile 3	2,900	2,585	2,480	2,930	3,620	3,975
	Quintile 4	3,965	3,365	3,520	4,015	5,065	5,485
	Quintile 5	8,160	6,905	6,940	7,695	9,810	10,195
Offers	Quintile 1	330	405	415	495	550	630
	Quintile 2	955	960	1,090	1,115	1,350	1,310
	Quintile 3	1,305	1,380	1,470	1,685	1,730	1,815
	Quintile 4	1,970	1,855	2,105	2,350	2,605	2,565
	Quintile 5	4,540	4,225	4,745	4,930	5,560	5,125
Offer rate	Quintile 1	37.7%	51.1%	50.9%	48.9%	42.5%	45.6%
	Quintile 2	41.8%	49.2%	56.9%	52.1%	47.6%	45.3%
	Quintile 3	45.0%	53.3%	59.3%	57.6%	47.8%	45.6%
	Quintile 4	49.6%	55.1%	59.8%	58.5%	51.4%	46.7%
	Quintile 5	55.7%	61.2%	68.3%	64.1%	56.7%	50.3%



## P.25 Scotland domiciled applicants (all ages) by SIMD quintile

Statistic	SIMD quintile	2011	2012	2013	2014	2015	2016
June deadline applicants	Quintile 1	1,795	1,720	1,755	2,020	2,500	2,715
	Quintile 2	1,995	1,790	1,810	2,015	2,565	2,715
	Quintile 3	2,210	2,130	2,180	2,245	3,005	3,195
	Quintile 4	2,610	2,300	2,310	2,580	3,425	3,575
	Quintile 5	3,715	3,425	3,265	3,495	4,585	4,725
Placed June deadline applicants	Quintile 1	255	295	290	380	510	520
	Quintile 2	330	345	370	395	510	615
	Quintile 3	370	440	455	515	625	610
	Quintile 4	560	525	555	600	775	745
	Quintile 5	860	810	885	970	1,165	1,120
All placed applicants	Quintile 1	265	320	305	395	535	540
	Quintile 2	355	370	390	415	540	640
	Quintile 3	385	465	485	530	650	635
	Quintile 4	590	555	590	630	810	765
	Quintile 5	895	865	950	1,015	1,210	1,155

## P.26 Scotland domiciled applications (all ages) by SIMD quintile

Statistic	SIMD quintile	2011	2012	2013	2014	2015	2016
June deadline applications	Quintile 1	2,470	2,285	2,330	2,760	3,355	3,710
	Quintile 2	2,790	2,345	2,365	2,805	3,445	3,620
	Quintile 3	3,000	2,770	2,895	3,110	3,980	4,290
	Quintile 4	3,560	2,995	3,050	3,510	4,600	4,740
	Quintile 5	5,265	4,530	4,380	4,790	6,210	6,300
Offers	Quintile 1	920	1,005	1,205	1,350	1,455	1,580
	Quintile 2	1,175	1,210	1,335	1,510	1,555	1,715
	Quintile 3	1,400	1,575	1,750	1,770	1,920	1,715
	Quintile 4	1,900	1,790	1,970	2,150	2,455	2,170
	Quintile 5	3,065	2,835	3,095	3,190	3,660	3,325
Offer rate	Quintile 1	37.2%	44.1%	51.7%	48.9%	43.4%	42.5%
	Quintile 2	42.2%	51.6%	56.5%	53.9%	45.2%	47.4%
	Quintile 3	46.6%	56.8%	60.4%	56.9%	48.2%	39.9%
	Quintile 4	53.3%	59.8%	64.5%	61.3%	53.4%	45.8%
	Quintile 5	58.2%	62.6%	70.6%	66.5%	59.0%	52.8%

### P.27 Applicants (all ages) by ethnic group

Statistic	Ethnic group	2011	2012	2013	2014	2015	2016
June deadline applicants	Asian	770	705	745	820	940	1,060
	Black	215	215	195	210	255	275
	Mixed	215	170	170	190	290	330
	White	12,140	10,860	10,760	11,835	15,405	16,320
	Other	40	50	65	80	105	125
Placed June deadline applicants	Asian	100	115	135	155	180	190
	Black	15	15	15	20	30	30
	Mixed	35	30	35	40	55	55
	White	2,305	2,290	2,415	2,680	3,390	3,440
	Other	5	5	10	15	25	20
All placed applicants	Asian	105	130	145	170	205	205
	Black	15	20	15	20	35	40
	Mixed	35	35	40	45	60	60
	White	2,410	2,425	2,560	2,805	3,545	3,575
	Other	5	10	10	15	30	20

### P.28 Applications (all ages) by ethnic group

Statistic	Ethnic group	2011	2012	2013	2014	2015	2016
June deadline applications	Asian	1,095	950	985	1,125	1,305	1,500
	Black	255	255	220	240	300	320
	Mixed	270	205	210	235	395	425
	White	16,505	14,110	14,150	16,065	20,400	21,445
	Other	45	60	85	95	160	175
Offers	Asian	435	465	540	545	615	650
	Black	65	75	75	90	85	120
	Mixed	135	115	130	140	205	195
	White	8,440	8,140	9,025	9,740	10,795	10,365
	Other	25	30	50	45	65	80
Offer rate	Asian	39.8%	48.8%	54.6%	48.5%	47.2%	43.4%
	Black	24.5%	29.0%	34.2%	37.5%	28.4%	37.0%
	Mixed	49.3%	55.3%	61.3%	59.4%	51.8%	45.7%
	White	51.1%	57.7%	63.8%	60.6%	52.9%	48.3%
	Other	51.1%	46.8%	56.5%	45.8%	41.5%	45.7%

## Technical Notes and Definitions

### UCAS undergraduate scheme

#### Adjustment

Adjustment allows applicants who have met and exceeded the terms of their conditional firm offer to seek and find a place at another provider whilst keeping their place at their original firm choice provider.

#### Clearing

Clearing is a route for applicants that are not placed and holding no offers to find a place on courses with vacancies.

#### Cycle year

The UCAS application cycle which runs from September to October the following year. For example the 2016 cycle runs from September 2015 through to October 2016.

#### End of cycle

The point in the cycle to which the numbers in this report refer, and the point at which the cycle is closed such that no more applications or offers can be made, and no more applicants can be placed. Numbers reported at the end of cycle exclude information on a small number of applicants who cancelled during the cycle.

#### Extra

Applicants who are unsuccessful in obtaining an offer or decline all offers may be eligible to apply through Extra, where they can apply to one further course at a time. Extra operates from 25 February until early July. It provides applicants who are eligible the possibility of obtaining an offer before exam results are published and Clearing starts.

#### June 30 deadline

The deadline for main scheme applications. Applicants who apply after this date will go directly into Clearing.

#### Record of Prior Acceptance (RPA)

RPA is an acceptance route used when a provider informs UCAS of applicants it has accepted outside of the normal application process (e.g. individuals who have applied directly to the provider).

### Reporting groups

#### Ethnic group

High level grouping of ethnic origin as declared by the applicant: 'White', 'Black', 'Asian', 'Mixed', 'Other', 'Unknown'. Applicants who declare themselves as 'Unknown' ethnic origin are not reported in these tables, but are included in the associated csv data file.

#### POLAR3 quintile

Developed by HEFCE, POLAR3 classifies small areas across the UK into five groups according to their level of young participation in Higher Education. Each of these groups represents around 20 per cent of young people and is ranked from Quintile 1 (areas with the lowest young participation rates, considered as the most disadvantaged) to Quintile 5 (highest young participation rates, considered most advantaged). POLAR3 is based on the participation rates of young people between 2005 and 2009 who entered Higher Education between 2005-06 and 2010-11, therefore is most suitable for applicants aged 19 and under. These groups are assigned using the postcode declared by the applicant at the time of their application. If a UK postcode is invalid, considered unsafe for measurement or there is no link to Census geography possible then the applicant is not assigned to a quintile. Applicants with no POLAR3 quintile are not reported.

#### Sex

Sex as declared by the applicant.

### **SIMD quintile**

Scottish index of multiple deprivation (SIMD) for 2012 identifies small area concentrations of multiple deprivation across all of Scotland, providing a relative measure of deprivation amongst 6505 small areas (data zones) based on 7 socio-economic domains. These small areas are classified into five groups ranked from Quintile 1 (considered the most deprived) to Quintile 5 (considered least deprived), with equal populations in each quintile. Quintiles are assigned using the postcode declared by the applicant, applicants declaring invalid postcodes are classified as 'Not assigned' and are not reported.

SIMD is only defined for applicants domiciled in Scotland, therefore any applicants domiciled outside of Scotland cannot be assigned to an SIMD quintile and so are not reported for this measure.

SIMD is only reported for providers in Scotland. Application and entry rates by SIMD are reported in the 2016 End of Cycle Report and the 2016 cycle January deadline application rate report.

### **Statistics reported in the tables**

#### **All placed applicants**

The number of applicants placed for entry into higher education at the provider through one of their choices, including any choices made through Extra, or via Adjustment, Clearing or RPA.

#### **All placed applicants per 10,000 population**

The number of total UK domiciled 18 year old placed applicants for entry into higher education at the provider divided by the number of UK 18 year olds in the population, multiplied by 10,000. This gives the number of 18 year olds, for every 10,000 in the population, that were placed at the provider through one of their choices, including any choices made through Extra, or via Adjustment, Clearing or RPA. It is an alternative way of expressing the entry rate to a provider. By referencing the underlying population this statistic shows how the number of placed applicants is changing in relation to the available pool of potential applicants and so gives the chance that somebody from the group will be placed at a provider.

This statistic is only reported for 18 year olds.

#### **Average offer rate**

The offer rate that you might expect if the predicted grades and subject choice of applicants were the only factors that influenced whether an applicant was made an offer by the provider. The average offer rate is calculated by dividing applicants according to their specific combination of grades (for A levels the best three predicted grades are used, for BTECs, International Baccalaureate and Scottish Highers and Advanced Highers, predicted grades along with any grades already achieved upon applying are used) and subject choice. For each combination the number of main scheme offers is divided by the number of main scheme applications, to give an overall offer rate. This is then multiplied by the number of applications made by the group for which the average offer rate is being calculated (for example POLAR3 quintile 1), to give an average number of offers for that group. These average number of offers are then added together across all combinations of predicted grade and subject and divided by the number of main scheme applications from the group to give the average offer rate.

The average offer rate does not attempt to control for any other factors that may play a part in the decision to make an offer, such as the subject of the qualifications studied, their relevance to a course, or the grade in each subject; higher numbers of A levels being studied; the exact profile of grades predicted; personal statements; teacher references; interviews; or any other criteria (such as work experience or portfolios) that may be part of the admissions decision.

This statistic is only reported for 18 year olds.

### Contribution of group to the average offer rate

The way in which the average offer rate is defined means that the pattern of application and offers of a group (for example POLAR3 quintile 1) will always contribute, in part, to the average offer rate for that group. When this contribution is large, the average offer rate will mainly reflect the patterns for the group, meaning that the value of the average offer rate will be similar to the offer rate, the percentage point difference statistic will be small, and any real difference between the offer rate and what might be expected given the predicted grades and subject choices of the applicants will be difficult to detect.

Values of the contribution of group to the average offer rate range between 0 and 1. The closer the value is to 1 the greater the contribution a group makes to its own average offer rate.

This statistic is only reported for 18 year olds.

### Placed June deadline applicants

An applicant who has been placed for entry into higher education at the provider through a June deadline application.

### Placed June deadline applicants per 10,000 population

The number of UK domiciled 18 year old placed June deadline applicants at the provider divided by the number of UK 18 year olds in the population, multiplied by 10,000. This gives the number of 18 year olds, for every 10,000 in the population, that were placed at the provider through one of their June deadline applications. It is an alternative way of expressing the entry rate to a provider, but for placed June deadline applicants only. By referencing the underlying population this statistic shows how the number of placed June deadline applicants is changing in relation to the available pool of potential 18 year old applicants and so gives the chance that somebody from the group will be placed at a provider through a June deadline application.

This statistic is only reported for 18 year olds.

### June deadline applications

An application (or choice) to a course in higher education to the provider that is made by the June 30 deadline. Each applicant can make up to five choices this way. The number of June deadline applications does not include choices made through the following routes: Clearing, Extra, Adjustment and RPAs. Applications made to October deadline courses received after the October deadline are not included in these statistics.

### June deadline applicants

The number of applicants that made at least one application to the provider by the June 30 deadline.

### June deadline applicants per 10,000 population

The number of UK domiciled 18 year old June deadline applicants to the provider divided by the number of UK 18 year olds in the population, multiplied by 10,000. This gives the number of 18 year olds, for every 10,000 in the population, who applied by the June 30 deadline. It is equivalent to the application rate. By referencing the underlying population this statistic shows how the number of June deadline applicants is changing in relation to the available pool of potential 18 year old applicants and so gives the chance that somebody from the group will apply to a provider by the June 30 deadline.

This statistic is only reported for 18 year olds.

### Offers

An offer is defined as a provider's decision in response to an application to offer a place to an applicant, often subject to the applicant satisfying academic and/or other criteria, via a June deadline application (i.e. does not cover choices made through the following routes: Clearing, Extra, Adjustment and RPAs).

### Offer rate

The number of offers made divided by the number of June deadline applications. This gives the proportion of all June deadline applications to the provider that received an offer.

### Percentage point difference between offer rate and average offer rate

The offer rate minus the average offer rate.

The percentage point difference can be compared to the expected range of statistical variation resulting from the calculation of the average offer rate using the Average Offer Rate Lookup Table. Where the value of the percentage point difference lies outside of this range, the percentage point difference may be considered to represent a real difference between the offer rate and the average offer rate.

### Other definitions

#### Age

This analysis uses country-specific age definitions that align with the cut off points for school and college cohorts within the different administrations of the UK. For England and Wales, ages are defined on the 31 August, for Northern Ireland on the 1 July and for Scotland on the 28 February the following year. Defining ages in this way matches the assignment of children to school cohorts. For applicants outside of the UK a cohort cut off of 31 August has been used.

#### Provider

A higher education provider - a university or college.

#### UK domiciled

Declared area of permanent residence within England, Northern Ireland, Scotland and Wales. Applicants from the Channel Islands and Isle of Man are not included.