

Sex, area background and ethnic group

U40 University of the West of Scotland

Cycle years: 2011 - 2016

Cycle Reference Point: End of Cycle

Applicant coverage: UK domiciled

Reporting groups: Sex, POLAR3, SIMD, ethnic group

Applicant statistics: June deadline applicants, placed June deadline applicants, all placed applicants, June deadline applicants per 10,000 population, placed June deadline applicants per 10,000 population, all placed applicants per 10,000 population

Application statistics: June deadline applications, offers, offer rate, average offer rate, percentage point difference between offer rate and average offer rate, contribution of group to the average offer rate

Non-disclosure controls: To avoid the disclosure of information about any individual the following measures are taken

- Applicants, placed applicants, applications and offers are rounded to the nearest 5.
- Applicants/placed applicants per 10,000 population figures are reported as 0 if the applicant/placed applicant figures are rounded to 0.
- All statistics related to the offer rate are not reported when the number of applications for a group is less than 10. The percentage point difference between the offer rate and the average offer rate is not reported when the number of applications for a group is less than 50.
- Offer rates are reported as 0% if there are fewer than 5 offers, and 100% if the number of offers is within 5 of the number of applications. When the offer rate is reported as 0% or 100%, it is reported in italics.

Contents:

18 year old applicants:	P.1
18 year old applications:	P.2
18 year old applicants by sex:	P.3
18 year old applications by sex:	P.4
18 year old applicants by POLAR3 quintile:	P.7
18 year old applications by POLAR3 quintile:	P.8
18 year old, Scotland domiciled applicants by SIMD quintile:	P.11
18 year old, Scotland domiciled applications by SIMD quintile:	P.12
18 year old applicants by ethnic group:	P.15
18 year old applications by ethnic group:	P.16
Applicants (all ages):	P.19
Applications (all ages):	P.20
Applicants (all ages) by sex:	P.21
Applications (all ages) by sex:	P.22
Applicants (all ages) by POLAR3 quintile:	P.23
Applications (all ages) by POLAR3 quintile:	P.24
Scotland domiciled applicants (all ages) by SIMD quintile:	P.25
Scotland domiciled applications (all ages) by SIMD quintile:	P.26
Applicants (all ages) by ethnic group:	P.27
Applications (all ages) by ethnic group:	P.28

P.1 18 year old applicants

Statistic	2011	2012	2013	2014	2015	2016
June deadline applicants	3,500	3,665	3,695	4,080	3,915	3,595
Placed June deadline applicants	930	855	755	610	605	625
All placed applicants	1,255	1,100	970	740	870	810
June deadline applicants per 10,000 population	45.5	47.4	48.5	54.2	51.1	47.9
Placed June deadline applicants per 10,000	12.1	11.0	9.9	8.1	7.9	8.3
All placed applicants per 10,000 population	16.3	14.2	12.8	9.8	11.3	10.8

P.2 18 year old applications

Statistic	2011	2012	2013	2014	2015	2016
June deadline applications	4,900	4,925	4,885	5,425	4,920	4,525
Offers	3,405	3,615	3,310	3,380	3,185	3,110
Offer rate	69.5%	73.4%	67.8%	62.4%	64.8%	68.8%

P.3 18 year old applicants by sex

Statistic	Sex	2011	2012	2013	2014	2015	2016
June deadline applicants	Men	1,470	1,475	1,515	1,650	1,510	1,320
	Women	2,030	2,190	2,180	2,430	2,410	2,275
Placed June deadline applicants	Men	450	355	340	250	250	240
	Women	480	495	415	355	355	385
All placed applicants	Men	595	470	430	305	375	315
	Women	660	630	540	435	495	495
June deadline applicants per 10,000 population	Men	37.4	37.1	38.8	42.6	38.4	34.4
	Women	53.9	58.1	58.8	66.4	64.5	62.2
Placed June deadline applicants per 10,000 population	Men	11.4	9.0	8.7	6.5	6.4	6.3
	Women	12.8	13.2	11.3	9.8	9.5	10.5
All placed applicants per 10,000 population	Men	15.1	11.8	11.0	7.9	9.6	8.1
	Women	17.6	16.7	14.6	11.8	13.2	13.6

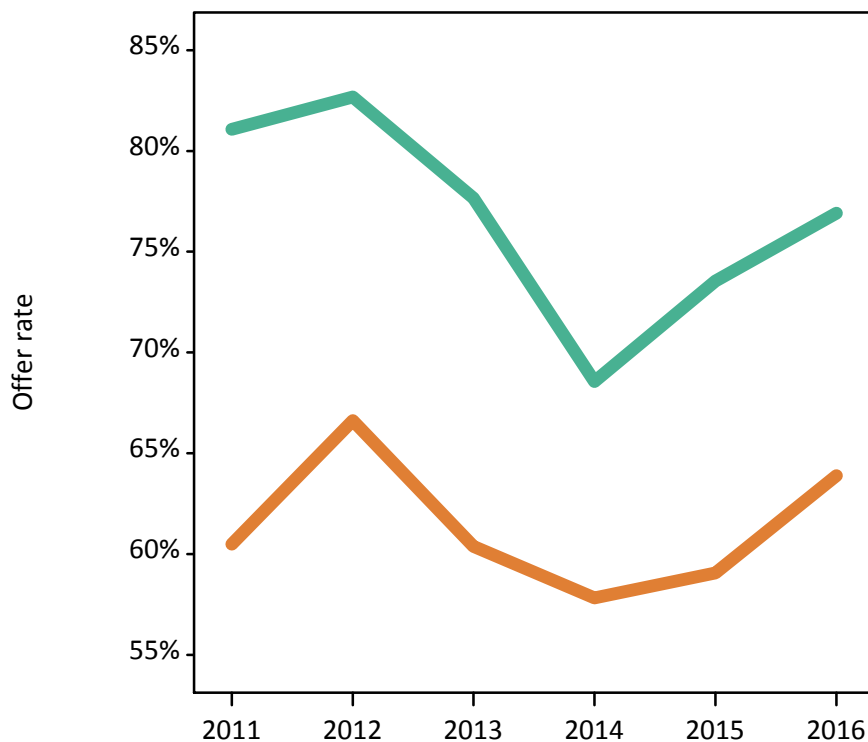
P.4 18 year old applications by sex

Statistic	Sex	2011	2012	2013	2014	2015	2016
June deadline applications	Men	2,135	2,080	2,090	2,290	1,935	1,700
	Women	2,765	2,845	2,790	3,135	2,985	2,820
Offers	Men	1,730	1,720	1,625	1,570	1,425	1,310
	Women	1,675	1,895	1,685	1,810	1,765	1,805
Offer rate	Men	81.1%	82.7%	77.7%	68.6%	73.5%	76.9%
	Women	60.5%	66.6%	60.4%	57.8%	59.1%	63.9%
Average offer rate	Men	80.0%	83.3%	77.5%	68.3%	73.3%	77.0%
	Women	61.3%	66.2%	60.5%	58.0%	59.2%	63.8%
Percentage point difference between offer rate and average offer rate	Men	1.0	-0.6	0.2	0.3	0.2	-0.1
	Women	-0.8	0.4	-0.2	-0.2	-0.2	0.1
Contribution of group to the average offer rate	Men	0.647	0.650	0.662	0.650	0.620	0.581
	Women	0.727	0.744	0.747	0.745	0.754	0.748

P.5 18 year old offer rate by sex

Note: The line for a group is not plotted when that group made fewer than 10 applications in any of the years from 2011-2016.

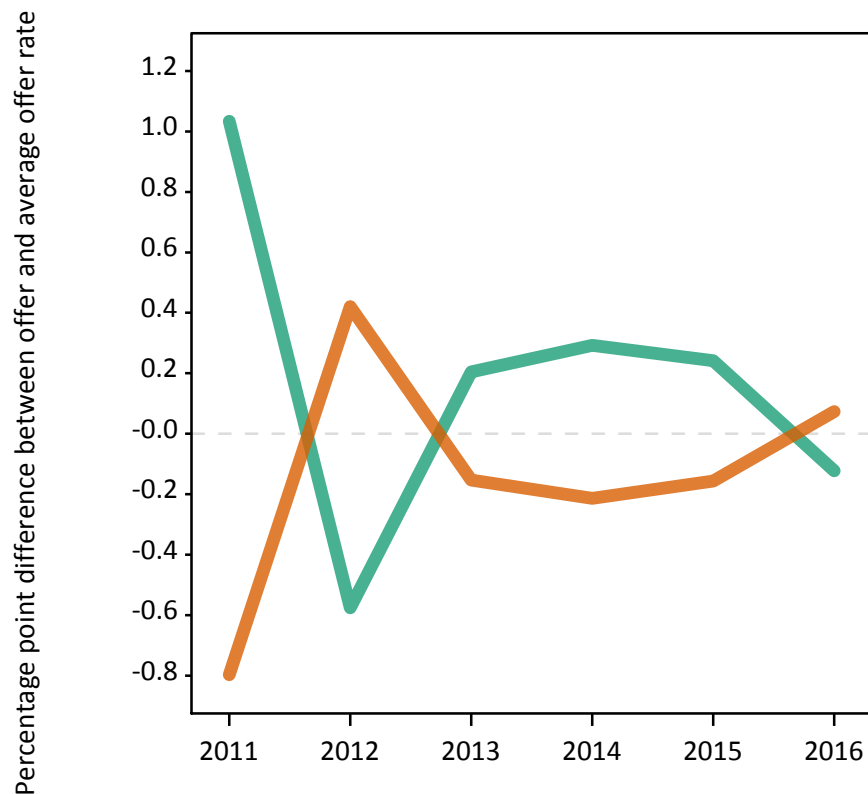
Men
Women



P.6 Percentage point difference between 18 year old offer rate and average offer rate by sex

Note: The line for a group is not plotted when that group made fewer than 50 applications in any of the years from 2011-2016.

Men
Women



P.7 18 year old applicants by POLAR3 quintile

Statistic	POLAR3 quintile	2011	2012	2013	2014	2015	2016
June deadline applicants	Quintile 1	225	220	240	285	300	260
	Quintile 2	560	565	575	695	620	615
	Quintile 3	690	760	720	760	765	745
	Quintile 4	870	895	885	990	955	810
	Quintile 5	1,155	1,215	1,265	1,345	1,275	1,150
Placed June deadline applicants	Quintile 1	50	55	50	35	35	30
	Quintile 2	160	140	100	110	80	105
	Quintile 3	200	190	170	105	125	140
	Quintile 4	230	205	170	145	150	130
	Quintile 5	295	265	265	210	215	215
All placed applicants	Quintile 1	65	75	65	45	50	40
	Quintile 2	200	180	130	125	115	125
	Quintile 3	270	230	215	135	175	175
	Quintile 4	320	260	225	175	205	165
	Quintile 5	400	350	340	255	320	300
June deadline applicants per 10,000 population	Quintile 1	15.5	15.6	17.2	20.5	21.5	19.4
	Quintile 2	37.2	37.7	39.0	47.5	41.7	42.4
	Quintile 3	45.0	49.3	47.3	50.4	49.7	49.6
	Quintile 4	55.5	56.3	56.5	64.2	61.1	52.3
	Quintile 5	69.8	72.4	76.6	82.4	76.0	69.5
Placed June deadline applicants per 10,000 population	Quintile 1	3.4	3.9	3.7	2.6	2.6	2.3
	Quintile 2	10.6	9.2	6.8	7.5	5.5	7.3
	Quintile 3	12.9	12.2	11.1	7.1	8.1	9.2
	Quintile 4	14.6	12.8	10.9	9.5	9.6	8.3
	Quintile 5	17.7	15.8	16.1	12.8	12.8	13.1
All placed applicants per 10,000 population	Quintile 1	4.5	5.2	4.5	3.2	3.6	3.0
	Quintile 2	13.4	11.9	8.8	8.7	7.7	8.6
	Quintile 3	17.5	14.8	14.0	9.1	11.5	11.6
	Quintile 4	20.4	16.5	14.5	11.4	13.2	10.6
	Quintile 5	24.1	20.8	20.4	15.7	19.1	18.2

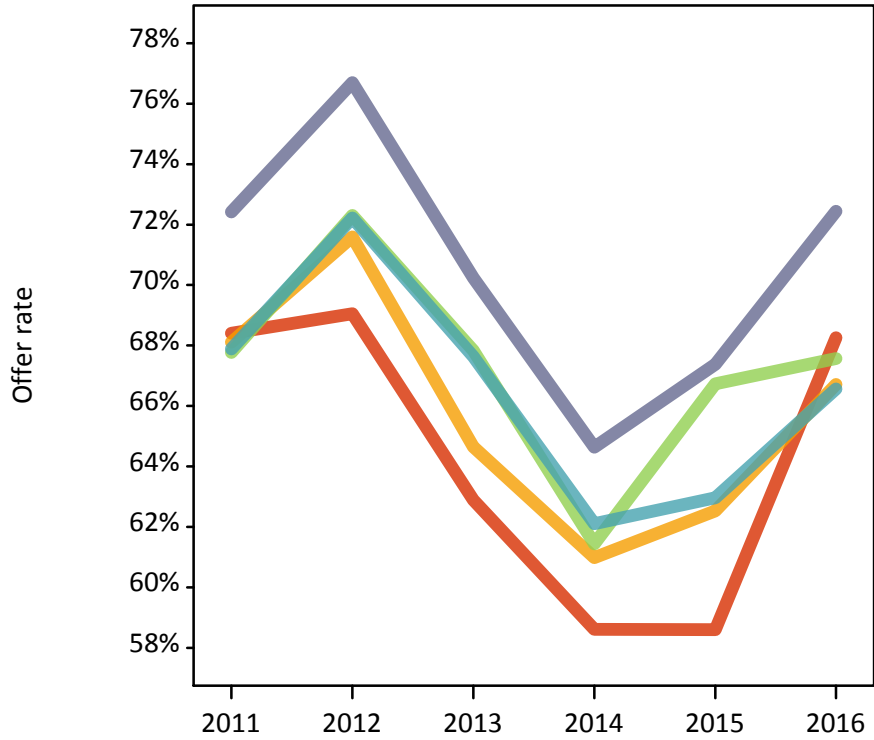
P.8 18 year old applications by POLAR3 quintile

Statistic	POLAR3 quintile	2011	2012	2013	2014	2015	2016
June deadline applications	Quintile 1	305	305	325	360	370	315
	Quintile 2	760	785	760	935	775	780
	Quintile 3	995	1,035	975	1,020	970	960
	Quintile 4	1,200	1,200	1,170	1,310	1,195	1,010
	Quintile 5	1,635	1,590	1,650	1,795	1,605	1,445
Offers	Quintile 1	210	210	205	210	220	215
	Quintile 2	520	560	490	570	485	520
	Quintile 3	675	750	660	625	645	650
	Quintile 4	815	870	790	815	755	670
	Quintile 5	1,185	1,220	1,160	1,160	1,080	1,045
Offer rate	Quintile 1	68.4%	69.1%	62.9%	58.6%	58.6%	68.3%
	Quintile 2	68.1%	71.6%	64.6%	61.0%	62.5%	66.7%
	Quintile 3	67.8%	72.3%	67.8%	61.4%	66.7%	67.6%
	Quintile 4	67.9%	72.2%	67.6%	62.1%	63.0%	66.6%
	Quintile 5	72.4%	76.7%	70.2%	64.6%	67.4%	72.4%
Average offer rate	Quintile 1	70.3%	69.6%	66.7%	61.6%	61.6%	69.5%
	Quintile 2	69.1%	73.4%	67.0%	60.9%	64.1%	68.0%
	Quintile 3	67.0%	72.5%	66.4%	61.8%	64.9%	67.8%
	Quintile 4	67.5%	72.7%	67.5%	62.4%	64.0%	67.2%
	Quintile 5	72.4%	75.2%	69.4%	63.7%	66.3%	70.9%
Percentage point difference between offer rate and average offer rate	Quintile 1	-1.9	-0.6	-3.8	-3.0	-3.0	-1.3
	Quintile 2	-1.0	-1.8	-2.4	0.1	-1.5	-1.2
	Quintile 3	0.8	-0.2	1.4	-0.3	1.9	-0.2
	Quintile 4	0.4	-0.5	0.2	-0.3	-1.1	-0.6
	Quintile 5	0.0	1.5	0.9	0.9	1.1	1.6
Contribution of group to the average offer rate	Quintile 1	0.158	0.145	0.129	0.133	0.137	0.160
	Quintile 2	0.199	0.208	0.201	0.209	0.200	0.217
	Quintile 3	0.243	0.251	0.244	0.228	0.239	0.255
	Quintile 4	0.288	0.285	0.278	0.277	0.282	0.266
	Quintile 5	0.372	0.359	0.377	0.366	0.370	0.360

P.9 18 year old offer rate by POLAR3 quintile

Note: The line for a group is not plotted when that group made fewer than 10 applications in any of the years from 2011-2016.

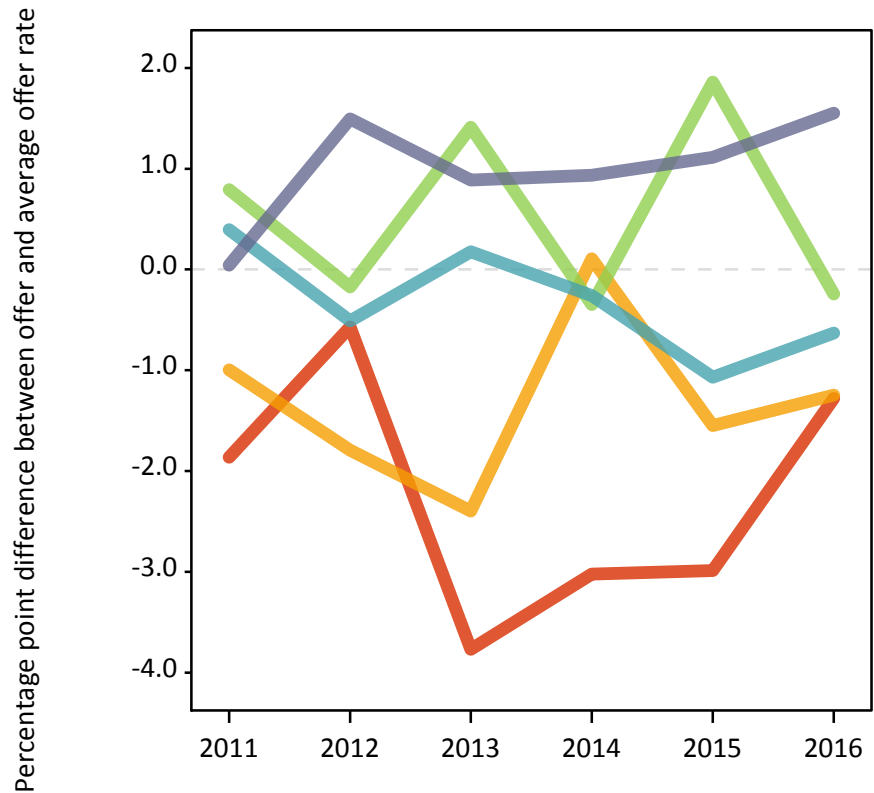
- Quintile 1
- Quintile 2
- Quintile 3
- Quintile 4
- Quintile 5



P.10 Percentage point difference between 18 year old offer rate and average offer rate by POLAR3 quintile

Note: The line for a group is not plotted when that group made fewer than 50 applications in any of the years from 2011-2016.

- Quintile 1
- Quintile 2
- Quintile 3
- Quintile 4
- Quintile 5



P.11 18 year old, Scotland domiciled applicants by SIMD quintile

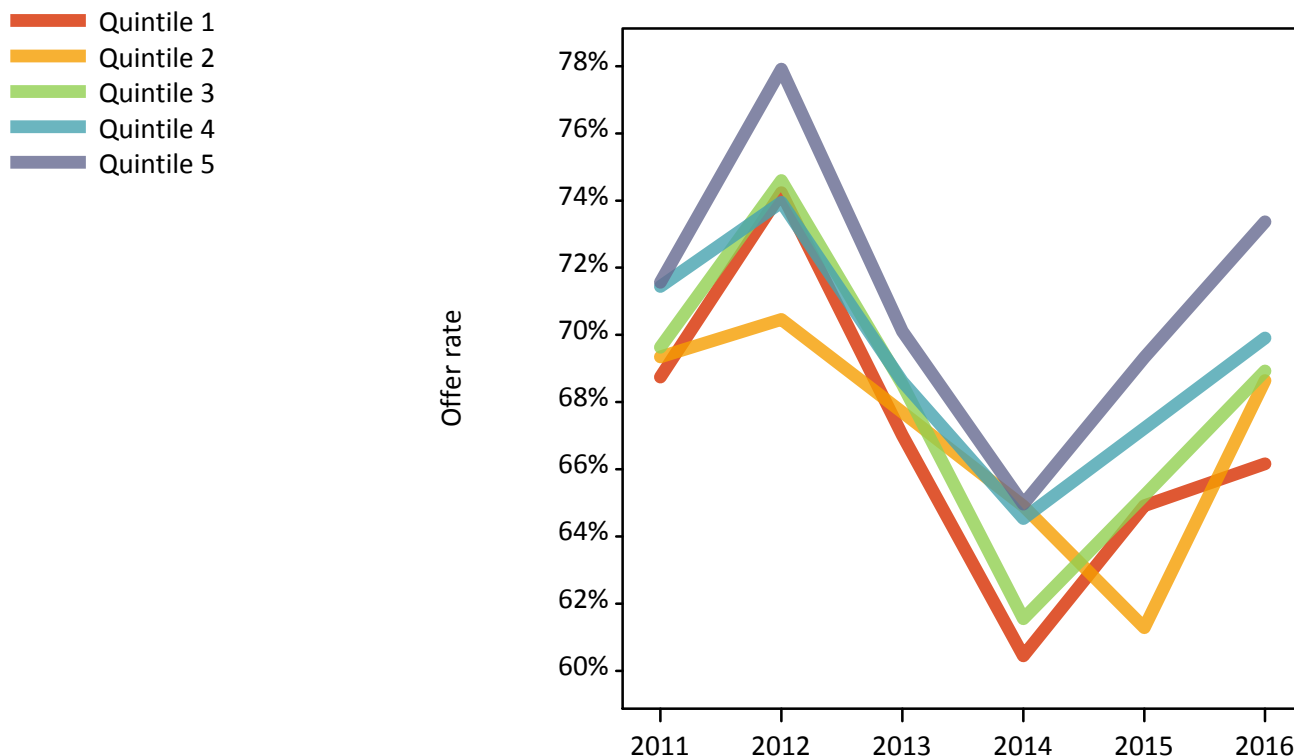
Statistic	SIMD quintile	2011	2012	2013	2014	2015	2016
June deadline applicants	Quintile 1	575	655	620	755	650	700
	Quintile 2	665	620	675	750	740	670
	Quintile 3	680	720	715	750	745	630
	Quintile 4	630	715	730	780	750	650
	Quintile 5	765	750	715	815	795	725
Placed June deadline applicants	Quintile 1	175	180	140	120	90	110
	Quintile 2	195	170	155	125	110	110
	Quintile 3	190	165	145	105	110	120
	Quintile 4	165	140	145	120	140	140
	Quintile 5	190	185	160	135	145	135
All placed applicants	Quintile 1	215	225	175	140	120	135
	Quintile 2	265	205	195	145	150	145
	Quintile 3	265	215	200	120	155	155
	Quintile 4	225	190	185	150	200	180
	Quintile 5	265	235	205	175	220	180
June deadline applicants per 10,000 population	Quintile 1	431.5	502.9	474.4	575.2	511.2	563.5
	Quintile 2	555.3	526.8	574.6	644.5	650.2	604.0
	Quintile 3	552.3	595.9	601.1	634.2	641.6	558.3
	Quintile 4	504.7	576.1	590.5	631.1	611.8	540.5
	Quintile 5	599.6	596.2	575.3	657.0	649.4	607.2
Placed June deadline applicants per 10,000 population	Quintile 1	129.6	137.8	107.5	90.0	70.6	87.7
	Quintile 2	162.3	142.8	133.2	106.0	97.8	100.8
	Quintile 3	154.0	137.4	120.1	88.9	95.7	104.2
	Quintile 4	132.2	112.6	117.1	96.2	115.0	114.6
	Quintile 5	149.9	145.3	128.4	110.7	117.9	114.7
All placed applicants per 10,000 population	Quintile 1	159.6	173.7	132.7	107.6	94.9	107.1
	Quintile 2	219.0	174.2	165.6	124.1	133.9	129.6
	Quintile 3	214.2	177.9	166.2	103.3	134.5	138.7
	Quintile 4	181.1	152.9	150.2	119.6	164.0	149.4
	Quintile 5	208.8	185.0	162.9	141.4	178.5	152.4

P.12 18 year old, Scotland domiciled applications by SIMD quintile

Statistic	SIMD quintile	2011	2012	2013	2014	2015	2016
June deadline applications	Quintile 1	835	950	860	1,035	840	920
	Quintile 2	970	845	940	1,040	950	845
	Quintile 3	990	990	935	980	920	800
	Quintile 4	870	930	925	1,015	960	835
	Quintile 5	1,040	1,005	975	1,115	1,005	905
Offers	Quintile 1	575	705	575	625	545	610
	Quintile 2	670	595	635	675	580	580
	Quintile 3	690	735	640	600	600	550
	Quintile 4	625	685	635	655	645	585
	Quintile 5	745	785	685	725	695	665
Offer rate	Quintile 1	68.7%	74.2%	67.0%	60.4%	64.9%	66.2%
	Quintile 2	69.3%	70.5%	67.7%	64.9%	61.3%	68.6%
	Quintile 3	69.6%	74.6%	68.5%	61.6%	65.2%	68.9%
	Quintile 4	71.4%	74.0%	68.6%	64.5%	67.2%	69.9%
	Quintile 5	71.6%	77.9%	70.1%	65.0%	69.3%	73.4%
Average offer rate	Quintile 1	70.1%	74.6%	69.5%	62.8%	66.4%	70.0%
	Quintile 2	68.6%	71.8%	67.4%	63.9%	63.7%	68.6%
	Quintile 3	70.8%	74.8%	68.0%	61.5%	65.4%	66.6%
	Quintile 4	69.6%	73.9%	68.5%	64.2%	64.9%	70.1%
	Quintile 5	71.6%	76.3%	68.8%	64.0%	67.8%	71.4%
Percentage point difference between offer rate and average offer rate	Quintile 1	-1.3	-0.4	-2.5	-2.3	-1.5	-3.8
	Quintile 2	0.7	-1.3	0.3	1.0	-2.5	0.0
	Quintile 3	-1.2	-0.2	0.5	0.0	-0.1	2.3
	Quintile 4	1.8	0.1	0.1	0.3	2.3	-0.2
	Quintile 5	-0.0	1.6	1.3	0.9	1.5	2.0
Contribution of group to the average offer rate	Quintile 1	0.210	0.224	0.211	0.221	0.204	0.246
	Quintile 2	0.229	0.209	0.227	0.222	0.226	0.217
	Quintile 3	0.230	0.234	0.222	0.204	0.213	0.206
	Quintile 4	0.217	0.215	0.221	0.217	0.220	0.220
	Quintile 5	0.250	0.246	0.233	0.237	0.246	0.237

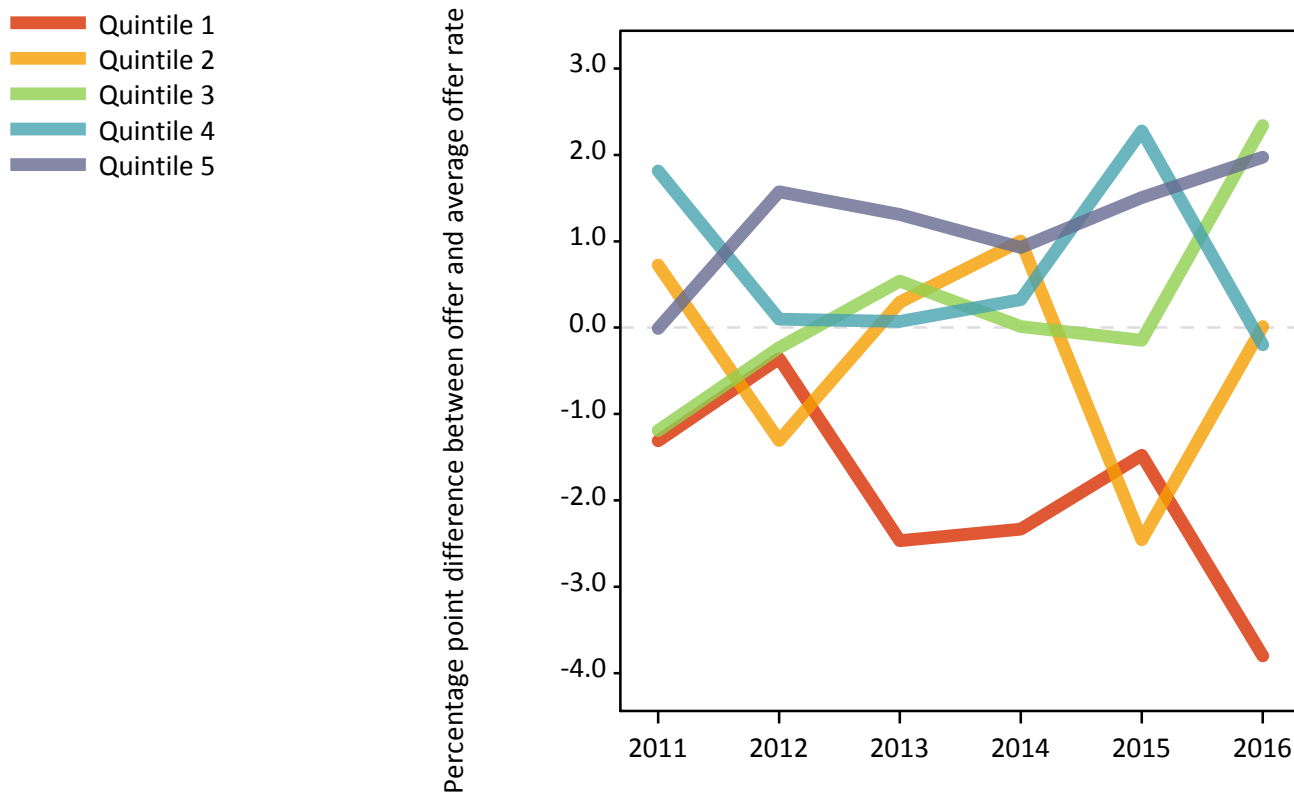
P.13 18 year old, Scotland domiciled offer rate by SIMD quintile

Note: The line for a group is not plotted when that group made fewer than 10 applications in any of the years from 2011-2016.



P.14 Percentage point difference between 18 year old, Scotland domiciled offer rate and average offer rate by SIMD quintile

Note: The line for a group is not plotted when that group made fewer than 50 applications in any of the years from 2011-2016.



P.15 18 year old applicants by ethnic group

Statistic	Ethnic group	2011	2012	2013	2014	2015	2016
June deadline applicants	Asian	115	165	160	160	160	155
	Black	20	25	30	40	30	45
	Mixed	35	30	35	45	55	55
	White	3,325	3,425	3,450	3,820	3,645	3,315
	Other	0	10	15	10	15	15
Placed June deadline applicants	Asian	35	35	25	15	20	20
	Black	5	5	5	0	5	5
	Mixed	5	5	10	5	5	10
	White	880	800	720	585	570	585
	Other	0	5	5	0	5	5
All placed applicants	Asian	60	60	40	25	40	40
	Black	10	10	5	5	5	5
	Mixed	10	5	10	5	5	10
	White	1,170	1,020	910	705	805	750
	Other	0	5	5	0	5	5
June deadline applicants per 10,000 population	Asian	17.9	25.5	24.1	23.9	22.9	21.8
	Black	8.0	8.5	9.8	12.5	8.8	14.1
	Mixed	14.5	11.9	12.6	15.3	17.8	16.8
	White	51.3	53.0	54.8	61.9	58.5	54.8
	Other	0.0	12.4	16.5	9.7	16.6	14.1
Placed June deadline applicants per 10,000 population	Asian	5.7	5.4	3.6	2.5	3.0	3.1
	Black	2.6	2.5	1.3	0.0	0.9	1.3
	Mixed	2.5	2.3	3.0	1.4	1.6	2.5
	White	13.6	12.4	11.4	9.5	9.1	9.7
	Other	0.0	3.4	3.3	0.0	5.2	3.0
All placed applicants per 10,000 population	Asian	9.5	9.1	6.4	3.7	5.4	5.6
	Black	4.0	3.6	1.7	1.3	1.6	1.9
	Mixed	4.1	2.7	3.3	1.4	2.3	2.9
	White	18.1	15.8	14.5	11.4	12.9	12.4
	Other	0.0	3.4	3.3	0.0	7.3	4.0

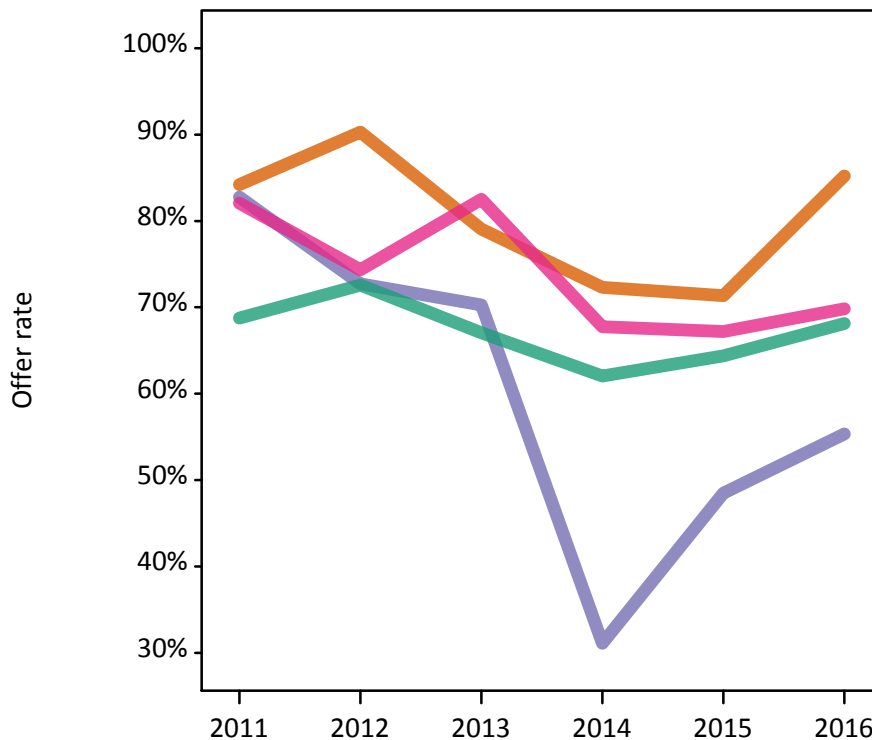
P.16 18 year old applications by ethnic group

Statistic	Ethnic group	2011	2012	2013	2014	2015	2016
June deadline applications	Asian	150	215	210	225	205	195
	Black	30	35	35	45	35	45
	Mixed	40	40	40	60	60	65
	White	4,670	4,610	4,570	5,070	4,585	4,180
	Other	0	20	15	10	20	25
Offers	Asian	130	195	165	160	145	165
	Black	25	25	25	15	15	25
	Mixed	30	30	35	40	40	45
	White	3,215	3,345	3,065	3,145	2,950	2,845
	Other	0	15	15	5	15	20
Offer rate	Asian	84.2%	90.3%	79.0%	72.3%	71.4%	85.2%
	Black	82.8%	72.7%	70.3%	31.1%	48.5%	55.3%
	Mixed	82.1%	74.4%	82.5%	67.7%	67.2%	69.8%
	White	68.8%	72.6%	67.0%	62.1%	64.4%	68.1%
	Other	N/A	100.0%	100.0%	100.0%	100.0%	100.0%
Average offer rate	Asian	83.4%	87.0%	79.4%	76.4%	74.3%	82.4%
	Black	79.1%	81.1%	72.9%	59.1%	62.9%	72.3%
	Mixed	75.1%	79.2%	79.0%	67.9%	69.0%	72.1%
	White	68.9%	72.6%	67.0%	61.6%	64.2%	68.0%
	Other	N/A	75.5%	90.5%	77.8%	77.0%	81.0%
Percentage point difference between offer rate and average offer rate	Asian	0.8	3.3	-0.4	-4.1	-2.9	2.8
	Black	N/A	N/A	N/A	N/A	N/A	N/A
	Mixed	N/A	N/A	N/A	-0.1	-1.8	-2.2
	White	-0.1	-0.1	-0.0	0.4	0.2	0.1
	Other	N/A	N/A	N/A	N/A	N/A	N/A
Contribution of group to the average offer rate	Asian	0.112	0.139	0.108	0.112	0.133	0.148
	Black	0.150	0.138	0.119	0.101	0.145	0.158
	Mixed	0.076	0.090	0.133	0.096	0.098	0.161
	White	0.958	0.944	0.943	0.940	0.940	0.935
	Other	N/A	0.105	0.061	0.068	0.065	0.081

P.17 18 year old offer rate by ethnic group

Note: The line for a group is not plotted when that group made fewer than 10 applications in any of the years from 2011-2016.

- Asian
- Black
- Mixed
- White
- Other



P.18 Percentage point difference between 18 year old offer rate and average offer rate by ethnic group

Note: The line for a group is not plotted when that group made fewer than 50 applications in any of the years from 2011-2016.

- Asian
- Black
- Mixed
- White
- Other



P.19 Applicants (all ages)

Statistic	2011	2012	2013	2014	2015	2016
June deadline applicants	9,850	10,400	10,925	11,700	13,315	13,175
Placed June deadline applicants	3,320	3,170	3,095	2,925	3,235	3,195
All placed applicants	4,105	3,850	3,730	3,305	3,985	3,825

P.20 Applications (all ages)

Statistic	2011	2012	2013	2014	2015	2016
June deadline applications	13,705	14,230	14,805	16,320	17,890	17,630
Offers	8,170	8,830	8,640	8,880	9,080	9,245
Offer rate	59.6%	62.0%	58.4%	54.4%	50.8%	52.4%

P.21 Applicants (all ages) by sex

Statistic	Sex	2011	2012	2013	2014	2015	2016
June deadline applicants	Men	3,860	4,015	4,265	4,400	4,595	4,520
	Women	5,990	6,385	6,660	7,300	8,720	8,655
Placed June deadline applicants	Men	1,365	1,285	1,280	1,125	1,170	1,110
	Women	1,955	1,885	1,815	1,795	2,065	2,085
All placed applicants	Men	1,715	1,575	1,530	1,280	1,495	1,380
	Women	2,390	2,275	2,195	2,030	2,490	2,440

P.22 Applications (all ages) by sex

Statistic	Sex	2011	2012	2013	2014	2015	2016
June deadline applications	Men	5,400	5,650	5,940	6,310	6,120	6,020
	Women	8,305	8,580	8,865	10,010	11,770	11,615
Offers	Men	3,775	4,035	4,040	3,925	3,770	3,775
	Women	4,395	4,795	4,600	4,955	5,310	5,475
Offer rate	Men	69.9%	71.4%	68.0%	62.2%	61.6%	62.7%
	Women	52.9%	55.9%	51.9%	49.5%	45.1%	47.1%

P.23 Applicants (all ages) by POLAR3 quintile

Statistic	POLAR3 quintile	2011	2012	2013	2014	2015	2016
June deadline applicants	Quintile 1	810	825	875	1,010	1,160	1,105
	Quintile 2	1,755	1,905	1,945	2,185	2,385	2,355
	Quintile 3	2,010	2,120	2,190	2,345	2,600	2,655
	Quintile 4	2,260	2,320	2,510	2,630	3,025	2,935
	Quintile 5	3,000	3,210	3,375	3,515	4,125	4,065
Placed June deadline applicants	Quintile 1	255	255	235	250	270	245
	Quintile 2	615	595	570	605	615	595
	Quintile 3	695	645	645	585	685	670
	Quintile 4	745	705	700	640	700	705
	Quintile 5	1,005	965	940	840	970	955
All placed applicants	Quintile 1	310	320	270	280	335	290
	Quintile 2	730	725	650	665	720	695
	Quintile 3	875	780	790	665	835	805
	Quintile 4	940	845	850	725	870	845
	Quintile 5	1,245	1,175	1,155	970	1,220	1,175

P.24 Applications (all ages) by POLAR3 quintile

Statistic	POLAR3 quintile	2011	2012	2013	2014	2015	2016
June deadline applications	Quintile 1	1,100	1,145	1,180	1,355	1,575	1,505
	Quintile 2	2,405	2,680	2,685	3,125	3,315	3,290
	Quintile 3	2,875	2,895	3,005	3,315	3,500	3,595
	Quintile 4	3,125	3,185	3,390	3,655	3,980	3,865
	Quintile 5	4,175	4,295	4,515	4,850	5,485	5,305
Offers	Quintile 1	635	665	655	705	755	750
	Quintile 2	1,390	1,590	1,505	1,635	1,655	1,710
	Quintile 3	1,655	1,820	1,750	1,785	1,815	1,900
	Quintile 4	1,850	1,940	1,985	2,015	2,015	1,995
	Quintile 5	2,630	2,800	2,730	2,735	2,825	2,850
Offer rate	Quintile 1	57.8%	57.9%	55.2%	51.8%	47.9%	50.0%
	Quintile 2	57.8%	59.4%	56.0%	52.4%	49.9%	51.9%
	Quintile 3	57.7%	62.8%	58.3%	53.8%	51.8%	52.9%
	Quintile 4	59.2%	60.9%	58.5%	55.1%	50.6%	51.6%
	Quintile 5	63.0%	65.2%	60.4%	56.3%	51.5%	53.7%

P.25 Scotland domiciled applicants (all ages) by SIMD quintile

Statistic	SIMD quintile	2011	2012	2013	2014	2015	2016
June deadline applicants	Quintile 1	2,375	2,590	2,550	3,000	3,175	3,245
	Quintile 2	2,015	2,040	2,230	2,410	2,685	2,695
	Quintile 3	1,850	1,975	2,095	2,130	2,460	2,365
	Quintile 4	1,495	1,640	1,780	1,845	2,160	2,150
	Quintile 5	1,640	1,675	1,700	1,760	2,190	2,135
Placed June deadline applicants	Quintile 1	865	875	765	850	890	905
	Quintile 2	730	695	680	650	675	680
	Quintile 3	650	580	620	550	615	585
	Quintile 4	480	460	505	400	510	505
	Quintile 5	550	505	485	430	490	475
All placed applicants	Quintile 1	1,025	1,055	900	940	1,065	1,065
	Quintile 2	900	815	815	720	810	820
	Quintile 3	815	720	755	615	745	700
	Quintile 4	595	575	620	470	655	590
	Quintile 5	695	610	590	510	630	575

P.26 Scotland domiciled applications (all ages) by SIMD quintile

Statistic	SIMD quintile	2011	2012	2013	2014	2015	2016
June deadline applications	Quintile 1	3,370	3,680	3,565	4,320	4,500	4,640
	Quintile 2	2,845	2,850	3,115	3,445	3,625	3,680
	Quintile 3	2,630	2,720	2,805	2,945	3,300	3,125
	Quintile 4	2,085	2,190	2,380	2,545	2,875	2,815
	Quintile 5	2,250	2,270	2,325	2,455	2,890	2,730
Offers	Quintile 1	1,940	2,235	2,020	2,285	2,345	2,445
	Quintile 2	1,685	1,745	1,830	1,865	1,810	1,940
	Quintile 3	1,555	1,670	1,680	1,660	1,675	1,615
	Quintile 4	1,310	1,425	1,415	1,400	1,505	1,480
	Quintile 5	1,475	1,540	1,420	1,440	1,490	1,520
Offer rate	Quintile 1	57.6%	60.8%	56.7%	52.9%	52.1%	52.7%
	Quintile 2	59.3%	61.2%	58.8%	54.1%	50.0%	52.6%
	Quintile 3	59.2%	61.3%	59.9%	56.5%	50.7%	51.6%
	Quintile 4	62.9%	65.1%	59.5%	55.0%	52.4%	52.6%
	Quintile 5	65.6%	67.9%	61.0%	58.6%	51.6%	55.8%

P.27 Applicants (all ages) by ethnic group

Statistic	Ethnic group	2011	2012	2013	2014	2015	2016
June deadline applicants	Asian	425	470	520	505	585	610
	Black	270	290	255	305	340	365
	Mixed	100	110	110	130	160	160
	White	9,010	9,470	9,960	10,690	12,095	11,915
	Other	15	30	45	45	70	55
Placed June deadline applicants	Asian	140	140	135	105	155	115
	Black	50	65	55	55	65	80
	Mixed	30	30	30	30	30	40
	White	3,085	2,920	2,850	2,720	2,950	2,920
	Other	5	10	15	10	25	15
All placed applicants	Asian	200	195	200	130	210	180
	Black	70	85	70	65	85	120
	Mixed	35	35	35	30	40	50
	White	3,755	3,515	3,390	3,015	3,605	3,425
	Other	5	10	15	10	30	20

P.28 Applications (all ages) by ethnic group

Statistic	Ethnic group	2011	2012	2013	2014	2015	2016
June deadline applications	Asian	585	645	695	690	785	795
	Black	350	365	325	385	435	495
	Mixed	120	145	140	175	195	210
	White	12,590	13,000	13,545	14,975	16,305	15,965
	Other	20	45	55	55	95	85
Offers	Asian	440	495	515	450	485	505
	Black	135	165	165	140	150	215
	Mixed	80	95	90	105	105	120
	White	7,475	8,015	7,815	8,135	8,235	8,315
	Other	15	30	35	30	55	50
Offer rate	Asian	74.7%	77.1%	74.0%	64.8%	62.0%	63.7%
	Black	38.0%	45.5%	50.5%	37.0%	34.8%	43.1%
	Mixed	69.5%	65.0%	65.0%	58.8%	54.6%	57.2%
	White	59.4%	61.7%	57.7%	54.3%	50.5%	52.1%
	Other	100.0%	63.6%	60.7%	50.9%	60.2%	58.3%

Technical Notes and Definitions

UCAS undergraduate scheme

Adjustment

Adjustment allows applicants who have met and exceeded the terms of their conditional firm offer to seek and find a place at another provider whilst keeping their place at their original firm choice provider.

Clearing

Clearing is a route for applicants that are not placed and holding no offers to find a place on courses with vacancies.

Cycle year

The UCAS application cycle which runs from September to October the following year. For example the 2016 cycle runs from September 2015 through to October 2016.

End of cycle

The point in the cycle to which the numbers in this report refer, and the point at which the cycle is closed such that no more applications or offers can be made, and no more applicants can be placed. Numbers reported at the end of cycle exclude information on a small number of applicants who cancelled during the cycle.

Extra

Applicants who are unsuccessful in obtaining an offer or decline all offers may be eligible to apply through Extra, where they can apply to one further course at a time. Extra operates from 25 February until early July. It provides applicants who are eligible the possibility of obtaining an offer before exam results are published and Clearing starts.

June 30 deadline

The deadline for main scheme applications. Applicants who apply after this date will go directly into Clearing.

Record of Prior Acceptance (RPA)

RPA is an acceptance route used when a provider informs UCAS of applicants it has accepted outside of the normal application process (e.g. individuals who have applied directly to the provider).

Reporting groups

Ethnic group

High level grouping of ethnic origin as declared by the applicant: 'White', 'Black', 'Asian', 'Mixed', 'Other', 'Unknown'. Applicants who declare themselves as 'Unknown' ethnic origin are not reported in these tables, but are included in the associated csv data file.

POLAR3 quintile

Developed by HEFCE, POLAR3 classifies small areas across the UK into five groups according to their level of young participation in Higher Education. Each of these groups represents around 20 per cent of young people and is ranked from Quintile 1 (areas with the lowest young participation rates, considered as the most disadvantaged) to Quintile 5 (highest young participation rates, considered most advantaged). POLAR3 is based on the participation rates of young people between 2005 and 2009 who entered Higher Education between 2005-06 and 2010-11, therefore is most suitable for applicants aged 19 and under. These groups are assigned using the postcode declared by the applicant at the time of their application. If a UK postcode is invalid, considered unsafe for measurement or there is no link to Census geography possible then the applicant is not assigned to a quintile. Applicants with no POLAR3 quintile are not reported.

Sex

Sex as declared by the applicant.

SIMD quintile

Scottish index of multiple deprivation (SIMD) for 2012 identifies small area concentrations of multiple deprivation across all of Scotland, providing a relative measure of deprivation amongst 6505 small areas (data zones) based on 7 socio-economic domains. These small areas are classified into five groups ranked from Quintile 1 (considered the most deprived) to Quintile 5 (considered least deprived), with equal populations in each quintile. Quintiles are assigned using the postcode declared by the applicant, applicants declaring invalid postcodes are classified as 'Not assigned' and are not reported.

SIMD is only defined for applicants domiciled in Scotland, therefore any applicants domiciled outside of Scotland cannot be assigned to an SIMD quintile and so are not reported for this measure.

SIMD is only reported for providers in Scotland. Application and entry rates by SIMD are reported in the 2016 End of Cycle Report and the 2016 cycle January deadline application rate report.

Statistics reported in the tables

All placed applicants

The number of applicants placed for entry into higher education at the provider through one of their choices, including any choices made through Extra, or via Adjustment, Clearing or RPA.

All placed applicants per 10,000 population

The number of total UK domiciled 18 year old placed applicants for entry into higher education at the provider divided by the number of UK 18 year olds in the population, multiplied by 10,000. This gives the number of 18 year olds, for every 10,000 in the population, that were placed at the provider through one of their choices, including any choices made through Extra, or via Adjustment, Clearing or RPA. It is an alternative way of expressing the entry rate to a provider. By referencing the underlying population this statistic shows how the number of placed applicants is changing in relation to the available pool of potential applicants and so gives the chance that somebody from the group will be placed at a provider.

This statistic is only reported for 18 year olds.

Average offer rate

The offer rate that you might expect if the predicted grades and subject choice of applicants were the only factors that influenced whether an applicant was made an offer by the provider. The average offer rate is calculated by dividing applicants according to their specific combination of grades (for A levels the best three predicted grades are used, for BTECs, International Baccalaureate and Scottish Highers and Advanced Highers, predicted grades along with any grades already achieved upon applying are used) and subject choice. For each combination the number of main scheme offers is divided by the number of main scheme applications, to give an overall offer rate. This is then multiplied by the number of applications made by the group for which the average offer rate is being calculated (for example POLAR3 quintile 1), to give an average number of offers for that group. These average number of offers are then added together across all combinations of predicted grade and subject and divided by the number of main scheme applications from the group to give the average offer rate.

The average offer rate does not attempt to control for any other factors that may play a part in the decision to make an offer, such as the subject of the qualifications studied, their relevance to a course, or the grade in each subject; higher numbers of A levels being studied; the exact profile of grades predicted; personal statements; teacher references; interviews; or any other criteria (such as work experience or portfolios) that may be part of the admissions decision.

This statistic is only reported for 18 year olds.

Contribution of group to the average offer rate

The way in which the average offer rate is defined means that the pattern of application and offers of a group (for example POLAR3 quintile 1) will always contribute, in part, to the average offer rate for that group. When this contribution is large, the average offer rate will mainly reflect the patterns for the group, meaning that the value of the average offer rate will be similar to the offer rate, the percentage point difference statistic will be small, and any real difference between the offer rate and what might be expected given the predicted grades and subject choices of the applicants will be difficult to detect.

Values of the contribution of group to the average offer rate range between 0 and 1. The closer the value is to 1 the greater the contribution a group makes to its own average offer rate.

This statistic is only reported for 18 year olds.

Placed June deadline applicants

An applicant who has been placed for entry into higher education at the provider through a June deadline application.

Placed June deadline applicants per 10,000 population

The number of UK domiciled 18 year old placed June deadline applicants at the provider divided by the number of UK 18 year olds in the population, multiplied by 10,000. This gives the number of 18 year olds, for every 10,000 in the population, that were placed at the provider through one of their June deadline applications. It is an alternative way of expressing the entry rate to a provider, but for placed June deadline applicants only. By referencing the underlying population this statistic shows how the number of placed June deadline applicants is changing in relation to the available pool of potential 18 year old applicants and so gives the chance that somebody from the group will be placed at a provider through a June deadline application.

This statistic is only reported for 18 year olds.

June deadline applications

An application (or choice) to a course in higher education to the provider that is made by the June 30 deadline. Each applicant can make up to five choices this way. The number of June deadline applications does not include choices made through the following routes: Clearing, Extra, Adjustment and RPAs. Applications made to October deadline courses received after the October deadline are not included in these statistics.

June deadline applicants

The number of applicants that made at least one application to the provider by the June 30 deadline.

June deadline applicants per 10,000 population

The number of UK domiciled 18 year old June deadline applicants to the provider divided by the number of UK 18 year olds in the population, multiplied by 10,000. This gives the number of 18 year olds, for every 10,000 in the population, who applied by the June 30 deadline. It is equivalent to the application rate. By referencing the underlying population this statistic shows how the number of June deadline applicants is changing in relation to the available pool of potential 18 year old applicants and so gives the chance that somebody from the group will apply to a provider by the June 30 deadline.

This statistic is only reported for 18 year olds.

Offers

An offer is defined as a provider's decision in response to an application to offer a place to an applicant, often subject to the applicant satisfying academic and/or other criteria, via a June deadline application (i.e. does not cover choices made through the following routes: Clearing, Extra, Adjustment and RPAs).

Offer rate

The number of offers made divided by the number of June deadline applications. This gives the proportion of all June deadline applications to the provider that received an offer.

Percentage point difference between offer rate and average offer rate

The offer rate minus the average offer rate.

The percentage point difference can be compared to the expected range of statistical variation resulting from the calculation of the average offer rate using the Average Offer Rate Lookup Table. Where the value of the percentage point difference lies outside of this range, the percentage point difference may be considered to represent a real difference between the offer rate and the average offer rate.

Other definitions

Age

This analysis uses country-specific age definitions that align with the cut off points for school and college cohorts within the different administrations of the UK. For England and Wales, ages are defined on the 31 August, for Northern Ireland on the 1 July and for Scotland on the 28 February the following year. Defining ages in this way matches the assignment of children to school cohorts. For applicants outside of the UK a cohort cut off of 31 August has been used.

Provider

A higher education provider - a university or college.

UK domiciled

Declared area of permanent residence within England, Northern Ireland, Scotland and Wales. Applicants from the Channel Islands and Isle of Man are not included.