

## W20 The University of Warwick

**Cycle years:** 2011 - 2016

**Cycle Reference Point:** End of Cycle

**Applicant coverage:** UK domiciled

**Reporting groups:** Sex, POLAR3, ethnic group

**Applicant statistics:** June deadline applicants, placed June deadline applicants, all placed applicants, June deadline applicants per 10,000 population, placed June deadline applicants per 10,000 population, all placed applicants per 10,000 population

**Application statistics:** June deadline applications, offers, offer rate, average offer rate, percentage point difference between offer rate and average offer rate, contribution of group to the average offer rate

**Non-disclosure controls:** To avoid the disclosure of information about any individual the following measures are taken

- Applicants, placed applicants, applications and offers are rounded to the nearest 5.
- Applicants/placed applicants per 10,000 population figures are reported as 0 if the applicant/placed applicant figures are rounded to 0.
- All statistics related to the offer rate are not reported when the number of applications for a group is less than 10. The percentage point difference between the offer rate and the average offer rate is not reported when the number of applications for a group is less than 50.
- Offer rates are reported as 0% if there are fewer than 5 offers, and 100% if the number of offers is within 5 of the number of applications. When the offer rate is reported as 0% or 100%, it is reported in italics.

### Contents:

18 year old applicants: P.1  
18 year old applications: P.2  
18 year old applicants by sex: P.3  
18 year old applications by sex: P.4  
18 year old applicants by POLAR3 quintile: P.7  
18 year old applications by POLAR3 quintile: P.8  
18 year old applicants by ethnic group: P.11  
18 year old applications by ethnic group: P.12  
Applicants (all ages): P.15  
Applications (all ages): P.16  
Applicants (all ages) by sex: P.17  
Applications (all ages) by sex: P.18  
Applicants (all ages) by POLAR3 quintile: P.19  
Applications (all ages) by POLAR3 quintile: P.20  
Applicants (all ages) by ethnic group: P.21  
Applications (all ages) by ethnic group: P.22

## P.1 18 year old applicants

Statistic	2011	2012	2013	2014	2015	2016
June deadline applicants	14,250	12,780	11,820	12,555	15,700	17,415
Placed June deadline applicants	1,955	1,965	2,060	2,015	2,450	2,385
All placed applicants	1,985	2,080	2,300	2,265	2,595	2,585
June deadline applicants per 10,000 population	185.0	165.2	155.3	166.7	204.9	232.3
Placed June deadline applicants per 10,000	25.4	25.4	27.1	26.8	32.0	31.8
All placed applicants per 10,000 population	25.8	26.9	30.2	30.1	33.8	34.5

## P.2 18 year old applications

Statistic	2011	2012	2013	2014	2015	2016
June deadline applications	14,450	12,910	11,945	12,705	15,930	17,625
Offers	9,275	8,690	9,045	10,150	13,425	14,655
Offer rate	64.2%	67.3%	75.7%	79.9%	84.3%	83.2%

### P.3 18 year old applicants by sex

Statistic	Sex	2011	2012	2013	2014	2015	2016
June deadline applicants	Men	7,640	6,940	6,375	6,795	8,295	9,290
	Women	6,610	5,840	5,445	5,760	7,405	8,120
Placed June deadline applicants	Men	1,040	1,130	1,150	1,095	1,330	1,285
	Women	915	840	910	920	1,120	1,100
All placed applicants	Men	1,055	1,180	1,270	1,220	1,395	1,390
	Women	930	900	1,030	1,040	1,200	1,195
June deadline applicants per 10,000 population	Men	194.1	175.0	163.3	175.5	211.4	241.9
	Women	175.5	154.9	146.9	157.4	198.1	222.3
Placed June deadline applicants per 10,000 population	Men	26.5	28.4	29.4	28.3	33.9	33.5
	Women	24.3	22.2	24.6	25.2	29.9	30.1
All placed applicants per 10,000 population	Men	26.9	29.7	32.5	31.6	35.5	36.1
	Women	24.6	23.9	27.8	28.5	32.1	32.7

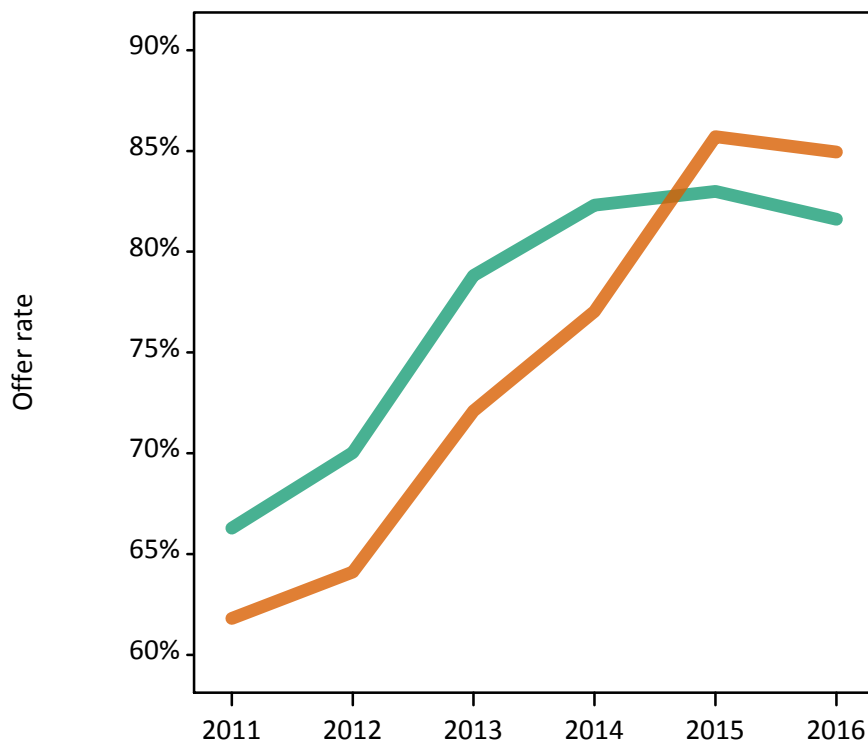
### P.4 18 year old applications by sex

Statistic	Sex	2011	2012	2013	2014	2015	2016
June deadline applications	Men	7,740	7,010	6,445	6,875	8,425	9,405
	Women	6,710	5,900	5,500	5,830	7,505	8,220
Offers	Men	5,130	4,910	5,080	5,660	6,990	7,675
	Women	4,145	3,780	3,965	4,490	6,435	6,980
Offer rate	Men	66.3%	70.0%	78.8%	82.3%	83.0%	81.6%
	Women	61.8%	64.1%	72.1%	77.0%	85.7%	84.9%
Average offer rate	Men	66.7%	70.3%	79.0%	82.4%	83.7%	82.1%
	Women	61.4%	63.8%	71.9%	77.0%	84.9%	84.4%
Percentage point difference between offer rate and average offer rate	Men	-0.4	-0.3	-0.2	-0.1	-0.7	-0.5
	Women	0.5	0.3	0.2	0.1	0.8	0.5
Contribution of group to the average offer rate	Men	0.641	0.655	0.651	0.649	0.643	0.647
	Women	0.586	0.590	0.591	0.586	0.599	0.596

### P.5 18 year old offer rate by sex

Note: The line for a group is not plotted when that group made fewer than 10 applications in any of the years from 2011-2016.

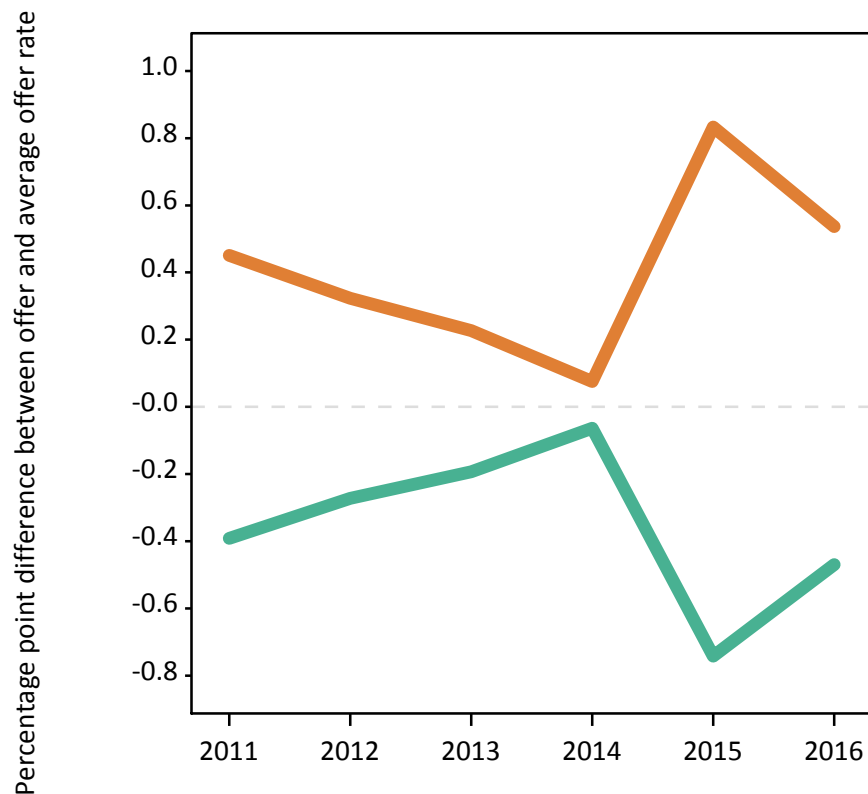
Men  
Women



### P.6 Percentage point difference between 18 year old offer rate and average offer rate by sex

Note: The line for a group is not plotted when that group made fewer than 50 applications in any of the years from 2011-2016.

Men  
Women



## P.7 18 year old applicants by POLAR3 quintile

Statistic	POLAR3 quintile	2011	2012	2013	2014	2015	2016
June deadline applicants	Quintile 1	725	675	600	735	860	1,020
	Quintile 2	1,515	1,370	1,265	1,375	1,775	1,980
	Quintile 3	2,230	2,000	1,885	1,985	2,550	2,825
	Quintile 4	3,370	3,125	2,820	3,010	3,705	4,150
	Quintile 5	6,370	5,585	5,235	5,425	6,775	7,355
Placed June deadline applicants	Quintile 1	100	95	105	110	115	135
	Quintile 2	205	230	205	225	270	220
	Quintile 3	285	300	310	305	385	410
	Quintile 4	470	490	505	485	605	565
	Quintile 5	890	845	935	890	1,070	1,050
All placed applicants	Quintile 1	105	100	115	120	120	145
	Quintile 2	210	235	225	260	290	250
	Quintile 3	290	320	355	345	405	445
	Quintile 4	475	515	570	530	640	605
	Quintile 5	900	900	1,040	1,010	1,130	1,130
June deadline applicants per 10,000 population	Quintile 1	50.3	47.2	42.9	53.0	61.5	75.6
	Quintile 2	100.9	91.5	85.7	94.1	119.6	136.8
	Quintile 3	145.0	129.4	123.6	131.8	166.0	188.0
	Quintile 4	215.3	196.8	180.2	195.4	236.8	268.8
	Quintile 5	384.8	332.6	316.7	332.6	404.8	445.3
Placed June deadline applicants per 10,000 population	Quintile 1	7.0	6.7	7.4	7.8	8.2	9.9
	Quintile 2	13.6	15.2	13.9	15.4	18.1	15.2
	Quintile 3	18.5	19.5	20.3	20.2	24.9	27.4
	Quintile 4	30.0	30.8	32.4	31.4	38.7	36.6
	Quintile 5	53.8	50.4	56.5	54.6	63.9	63.4
All placed applicants per 10,000 population	Quintile 1	7.2	7.0	8.1	8.6	8.6	10.8
	Quintile 2	13.9	15.6	15.2	17.6	19.5	17.2
	Quintile 3	18.8	20.9	23.1	22.9	26.5	29.5
	Quintile 4	30.4	32.5	36.4	34.5	40.8	39.2
	Quintile 5	54.4	53.7	62.8	61.9	67.6	68.5

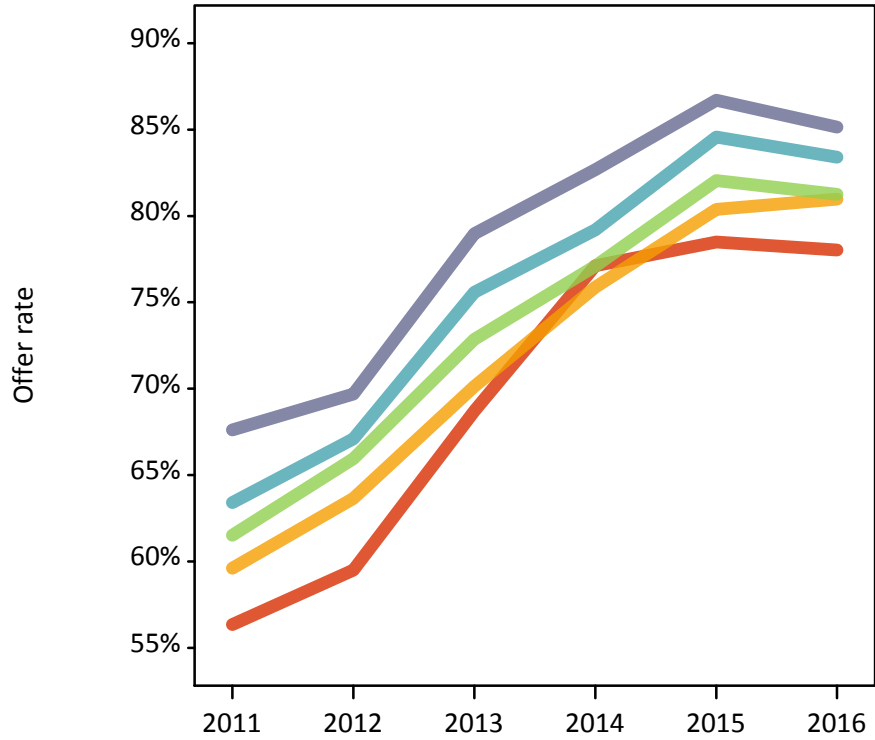
## P.8 18 year old applications by POLAR3 quintile

Statistic	POLAR3 quintile	2011	2012	2013	2014	2015	2016
June deadline applications	Quintile 1	740	680	605	750	875	1,035
	Quintile 2	1,555	1,390	1,280	1,395	1,810	2,005
	Quintile 3	2,265	2,015	1,905	2,010	2,590	2,875
	Quintile 4	3,405	3,160	2,845	3,045	3,775	4,195
	Quintile 5	6,445	5,635	5,290	5,475	6,850	7,435
Offers	Quintile 1	415	405	415	580	685	805
	Quintile 2	930	885	900	1,060	1,455	1,625
	Quintile 3	1,390	1,330	1,390	1,550	2,125	2,335
	Quintile 4	2,160	2,120	2,150	2,415	3,190	3,495
	Quintile 5	4,355	3,925	4,175	4,525	5,940	6,330
Offer rate	Quintile 1	56.4%	59.5%	68.7%	77.1%	78.5%	78.0%
	Quintile 2	59.6%	63.6%	70.1%	75.9%	80.4%	81.0%
	Quintile 3	61.5%	65.9%	72.9%	77.1%	82.1%	81.3%
	Quintile 4	63.4%	67.1%	75.6%	79.2%	84.6%	83.4%
	Quintile 5	67.6%	69.7%	79.0%	82.7%	86.7%	85.1%
Average offer rate	Quintile 1	58.6%	64.0%	71.3%	78.2%	80.1%	79.5%
	Quintile 2	61.4%	65.1%	72.1%	77.5%	81.3%	82.5%
	Quintile 3	62.7%	67.0%	74.4%	78.5%	83.7%	81.8%
	Quintile 4	64.2%	67.3%	76.4%	79.6%	84.7%	83.8%
	Quintile 5	66.1%	68.3%	77.2%	81.4%	85.5%	84.1%
Percentage point difference between offer rate and average offer rate	Quintile 1	-2.3	-4.5	-2.6	-1.1	-1.6	-1.5
	Quintile 2	-1.8	-1.5	-2.0	-1.6	-0.9	-1.5
	Quintile 3	-1.2	-1.1	-1.5	-1.4	-1.7	-0.5
	Quintile 4	-0.8	-0.2	-0.8	-0.4	-0.1	-0.4
	Quintile 5	1.5	1.4	1.7	1.3	1.2	1.1
Contribution of group to the average offer rate	Quintile 1	0.124	0.112	0.116	0.127	0.115	0.108
	Quintile 2	0.165	0.168	0.173	0.171	0.172	0.165
	Quintile 3	0.203	0.204	0.213	0.212	0.205	0.204
	Quintile 4	0.270	0.281	0.279	0.276	0.271	0.272
	Quintile 5	0.484	0.475	0.489	0.475	0.472	0.462

### P.9 18 year old offer rate by POLAR3 quintile

Note: The line for a group is not plotted when that group made fewer than 10 applications in any of the years from 2011-2016.

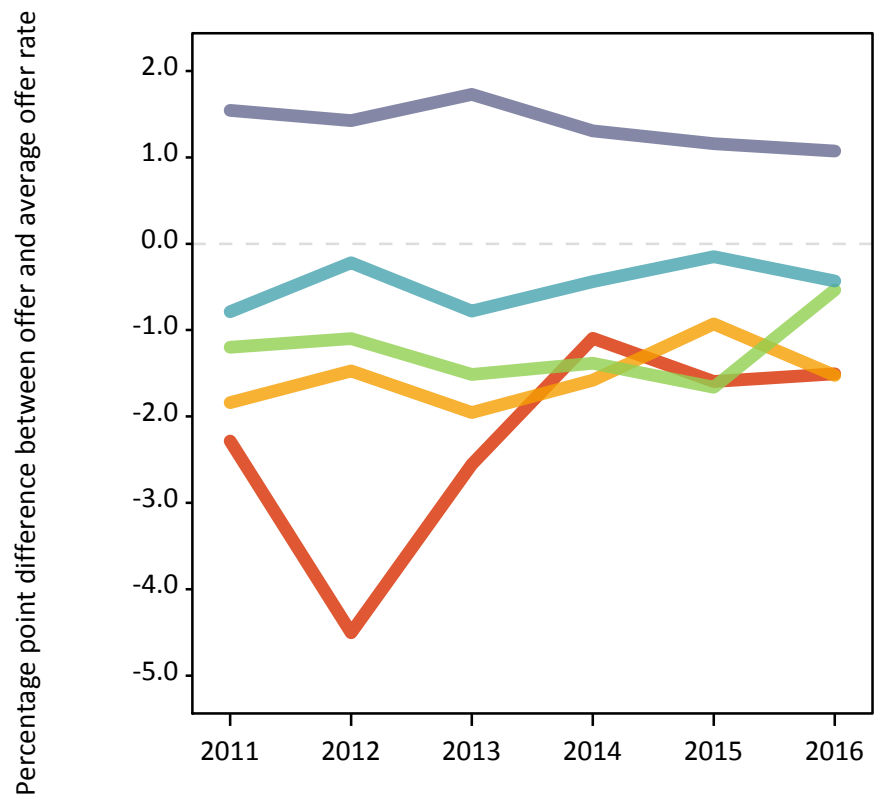
- Quintile 1
- Quintile 2
- Quintile 3
- Quintile 4
- Quintile 5



### P.10 Percentage point difference between 18 year old offer rate and average offer rate by POLAR3 quintile

Note: The line for a group is not plotted when that group made fewer than 50 applications in any of the years from 2011-2016.

- Quintile 1
- Quintile 2
- Quintile 3
- Quintile 4
- Quintile 5



## P.11 18 year old applicants by ethnic group

Statistic	Ethnic group	2011	2012	2013	2014	2015	2016
June deadline applicants	Asian	1,770	1,625	1,635	1,820	2,370	2,885
	Black	460	380	450	525	705	920
	Mixed	630	550	575	620	730	910
	White	11,140	9,975	8,945	9,370	11,535	12,290
	Other	120	135	120	135	180	205
Placed June deadline applicants	Asian	245	275	325	320	405	375
	Black	60	60	90	90	120	125
	Mixed	90	85	105	100	105	135
	White	1,530	1,505	1,505	1,490	1,760	1,695
	Other	20	25	20	10	30	25
All placed applicants	Asian	255	300	390	370	435	420
	Black	60	75	110	115	140	150
	Mixed	90	90	120	110	115	150
	White	1,545	1,570	1,635	1,640	1,830	1,805
	Other	20	25	25	15	35	30
June deadline applicants per 10,000 population	Asian	280.7	250.8	248.2	268.2	334.9	401.2
	Black	167.5	135.3	150.9	172.5	221.8	293.4
	Mixed	259.3	210.8	213.0	215.2	237.4	289.9
	White	172.0	154.5	142.2	151.9	185.2	203.1
	Other	150.6	152.6	134.5	147.2	184.7	205.5
Placed June deadline applicants per 10,000 population	Asian	38.9	42.3	49.1	47.2	56.9	52.1
	Black	21.6	21.3	31.0	29.4	38.0	39.3
	Mixed	36.3	31.9	39.6	34.8	34.1	43.2
	White	23.6	23.3	23.9	24.1	28.2	28.1
	Other	25.9	27.1	22.1	10.7	31.1	25.2
All placed applicants per 10,000 population	Asian	40.5	46.6	59.4	54.7	61.7	58.6
	Black	21.6	26.3	37.7	37.9	44.3	47.3
	Mixed	37.2	33.8	44.4	37.5	36.6	47.7
	White	23.8	24.3	26.0	26.6	29.4	29.8
	Other	25.9	29.4	26.5	16.1	36.3	29.2



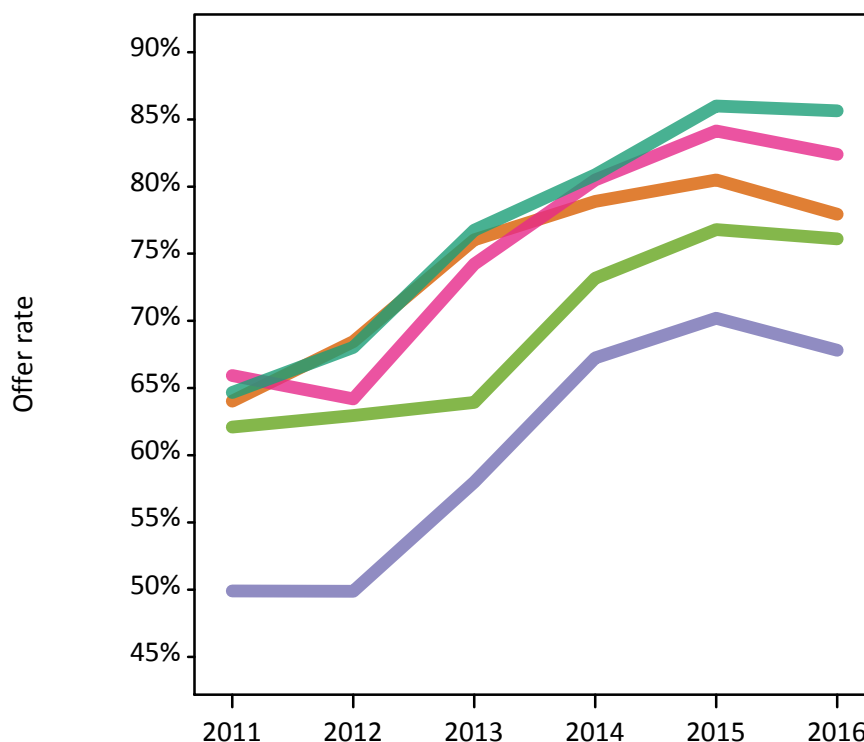
## P.12 18 year old applications by ethnic group

Statistic	Ethnic group	2011	2012	2013	2014	2015	2016
June deadline applications	Asian	1,790	1,640	1,655	1,840	2,405	2,915
	Black	465	380	450	525	715	925
	Mixed	635	555	580	625	745	920
	White	11,300	10,085	9,050	9,490	11,705	12,450
	Other	125	135	120	140	180	205
Offers	Asian	1,145	1,120	1,260	1,450	1,935	2,275
	Black	230	190	260	355	500	630
	Mixed	420	355	430	505	625	760
	White	7,310	6,860	6,945	7,675	10,065	10,665
	Other	75	85	80	100	140	155
Offer rate	Asian	64.0%	68.5%	76.0%	78.9%	80.5%	77.9%
	Black	49.9%	49.9%	58.0%	67.2%	70.2%	67.8%
	Mixed	65.9%	64.2%	74.2%	80.5%	84.1%	82.4%
	White	64.7%	68.0%	76.7%	80.9%	86.0%	85.6%
	Other	62.1%	63.0%	63.9%	73.2%	76.8%	76.1%
Average offer rate	Asian	63.1%	65.3%	73.9%	78.4%	80.3%	77.9%
	Black	50.4%	50.6%	58.3%	68.9%	75.2%	71.4%
	Mixed	63.7%	63.8%	73.9%	80.3%	84.7%	82.0%
	White	65.0%	68.6%	77.1%	80.9%	85.6%	85.5%
	Other	55.6%	61.3%	67.7%	72.8%	79.8%	75.3%
Percentage point difference between offer rate and average offer rate	Asian	0.9	3.1	2.1	0.5	0.2	0.0
	Black	-0.5	-0.7	-0.3	-1.7	-5.0	-3.5
	Mixed	2.2	0.4	0.3	0.2	-0.5	0.4
	White	-0.3	-0.5	-0.4	-0.0	0.3	0.2
	Other	6.5	1.7	-3.7	0.3	-3.0	0.8
Contribution of group to the average offer rate	Asian	0.220	0.222	0.227	0.236	0.234	0.241
	Black	0.107	0.133	0.146	0.146	0.130	0.145
	Mixed	0.093	0.093	0.104	0.094	0.083	0.093
	White	0.806	0.805	0.785	0.776	0.763	0.739
	Other	0.066	0.080	0.100	0.074	0.058	0.074

### P.13 18 year old offer rate by ethnic group

Note: The line for a group is not plotted when that group made fewer than 10 applications in any of the years from 2011-2016.

- Asian
- Black
- Mixed
- White
- Other



### P.14 Percentage point difference between 18 year old offer rate and average offer rate by ethnic group

Note: The line for a group is not plotted when that group made fewer than 50 applications in any of the years from 2011-2016.

- Asian
- Black
- Mixed
- White
- Other



### P.15 Applicants (all ages)

Statistic	2011	2012	2013	2014	2015	2016
June deadline applicants	20,145	17,255	16,840	18,545	21,270	23,005
Placed June deadline applicants	2,645	2,445	2,630	2,570	3,050	3,090
All placed applicants	2,690	2,590	2,955	2,890	3,260	3,345

### P.16 Applications (all ages)

Statistic	2011	2012	2013	2014	2015	2016
June deadline applications	20,440	17,435	17,040	18,775	21,580	23,320
Offers	11,350	10,190	10,945	12,155	15,950	17,510
Offer rate	55.5%	58.4%	64.2%	64.7%	73.9%	75.1%

### P.17 Applicants (all ages) by sex

Statistic	Sex	2011	2012	2013	2014	2015	2016
June deadline applicants	Men	10,585	9,165	8,875	9,745	11,025	12,145
	Women	9,560	8,090	7,965	8,805	10,245	10,860
Placed June deadline applicants	Men	1,355	1,370	1,435	1,355	1,625	1,625
	Women	1,290	1,075	1,195	1,215	1,425	1,465
All placed applicants	Men	1,380	1,435	1,595	1,520	1,730	1,765
	Women	1,310	1,155	1,360	1,370	1,530	1,580

### P.18 Applications (all ages) by sex

Statistic	Sex	2011	2012	2013	2014	2015	2016
June deadline applications	Men	10,735	9,260	8,990	9,870	11,195	12,320
	Women	9,705	8,170	8,055	8,905	10,385	11,000
Offers	Men	6,220	5,690	6,090	6,690	8,265	9,145
	Women	5,130	4,500	4,855	5,460	7,690	8,365
Offer rate	Men	57.9%	61.4%	67.7%	67.8%	73.8%	74.2%
	Women	52.9%	55.1%	60.3%	61.3%	74.0%	76.1%

### P.19 Applicants (all ages) by POLAR3 quintile

Statistic	POLAR3 quintile	2011	2012	2013	2014	2015	2016
June deadline applicants	Quintile 1	1,170	1,055	1,025	1,185	1,305	1,490
	Quintile 2	2,280	2,035	1,965	2,220	2,615	2,755
	Quintile 3	3,375	2,800	2,830	3,095	3,610	3,910
	Quintile 4	4,705	4,080	3,890	4,390	4,950	5,420
	Quintile 5	8,550	7,240	7,085	7,610	8,725	9,310
Placed June deadline applicants	Quintile 1	135	135	140	140	150	195
	Quintile 2	285	295	270	285	345	300
	Quintile 3	385	380	405	400	490	550
	Quintile 4	630	590	630	615	740	725
	Quintile 5	1,200	1,040	1,185	1,125	1,315	1,315
All placed applicants	Quintile 1	140	140	155	160	160	205
	Quintile 2	290	305	300	320	375	335
	Quintile 3	390	405	465	450	530	590
	Quintile 4	640	625	710	680	785	775
	Quintile 5	1,215	1,110	1,315	1,275	1,400	1,430

### P.20 Applications (all ages) by POLAR3 quintile

Statistic	POLAR3 quintile	2011	2012	2013	2014	2015	2016
June deadline applications	Quintile 1	1,195	1,060	1,040	1,205	1,330	1,510
	Quintile 2	2,340	2,065	1,995	2,260	2,660	2,810
	Quintile 3	3,430	2,825	2,865	3,130	3,665	3,980
	Quintile 4	4,750	4,125	3,925	4,440	5,030	5,480
	Quintile 5	8,660	7,310	7,170	7,695	8,825	9,415
Offers	Quintile 1	540	500	545	705	850	1,010
	Quintile 2	1,140	1,060	1,115	1,305	1,755	1,955
	Quintile 3	1,745	1,565	1,700	1,885	2,570	2,840
	Quintile 4	2,630	2,440	2,575	2,885	3,760	4,190
	Quintile 5	5,265	4,595	4,990	5,340	6,975	7,435
Offer rate	Quintile 1	45.3%	47.3%	52.3%	58.6%	64.0%	66.9%
	Quintile 2	48.7%	51.3%	55.9%	57.8%	65.9%	69.5%
	Quintile 3	50.8%	55.4%	59.3%	60.3%	70.1%	71.4%
	Quintile 4	55.3%	59.1%	65.6%	64.9%	74.7%	76.4%
	Quintile 5	60.8%	62.8%	69.6%	69.4%	79.0%	79.0%

## P.21 Applicants (all ages) by ethnic group

Statistic	Ethnic group	2011	2012	2013	2014	2015	2016
June deadline applicants	Asian	2,770	2,485	2,575	3,010	3,490	3,995
	Black	995	855	930	1,035	1,265	1,500
	Mixed	880	750	820	945	1,050	1,205
	White	15,020	12,740	12,130	13,100	14,885	15,645
	Other	220	220	205	260	290	320
Placed June deadline applicants	Asian	340	355	430	420	515	485
	Black	95	85	130	120	170	185
	Mixed	115	110	130	130	135	170
	White	2,040	1,840	1,905	1,860	2,150	2,170
	Other	30	35	25	20	40	30
All placed applicants	Asian	355	390	515	485	570	550
	Black	95	100	165	160	200	220
	Mixed	120	115	145	140	145	185
	White	2,060	1,925	2,070	2,045	2,250	2,305
	Other	30	35	30	30	45	40

## P.22 Applications (all ages) by ethnic group

Statistic	Ethnic group	2011	2012	2013	2014	2015	2016
June deadline applications	Asian	2,805	2,510	2,610	3,050	3,535	4,045
	Black	1,015	860	935	1,040	1,280	1,510
	Mixed	890	755	820	955	1,065	1,215
	White	15,235	12,875	12,285	13,265	15,110	15,880
	Other	225	225	205	265	290	320
Offers	Asian	1,480	1,405	1,600	1,820	2,430	2,795
	Black	335	260	360	455	670	850
	Mixed	505	445	535	630	775	915
	White	8,775	7,865	8,245	9,000	11,690	12,510
	Other	105	110	100	140	180	210
Offer rate	Asian	52.8%	56.0%	61.3%	59.6%	68.7%	69.1%
	Black	33.1%	29.9%	38.5%	43.9%	52.3%	56.3%
	Mixed	56.5%	58.8%	65.1%	65.6%	72.7%	75.1%
	White	57.6%	61.1%	67.1%	67.9%	77.4%	78.8%
	Other	47.6%	49.3%	49.5%	54.0%	61.3%	64.8%

## Technical Notes and Definitions

### UCAS undergraduate scheme

#### Adjustment

Adjustment allows applicants who have met and exceeded the terms of their conditional firm offer to seek and find a place at another provider whilst keeping their place at their original firm choice provider.

#### Clearing

Clearing is a route for applicants that are not placed and holding no offers to find a place on courses with vacancies.

#### Cycle year

The UCAS application cycle which runs from September to October the following year. For example the 2016 cycle runs from September 2015 through to October 2016.

#### End of cycle

The point in the cycle to which the numbers in this report refer, and the point at which the cycle is closed such that no more applications or offers can be made, and no more applicants can be placed. Numbers reported at the end of cycle exclude information on a small number of applicants who cancelled during the cycle.

#### Extra

Applicants who are unsuccessful in obtaining an offer or decline all offers may be eligible to apply through Extra, where they can apply to one further course at a time. Extra operates from 25 February until early July. It provides applicants who are eligible the possibility of obtaining an offer before exam results are published and Clearing starts.

#### June 30 deadline

The deadline for main scheme applications. Applicants who apply after this date will go directly into Clearing.

#### Record of Prior Acceptance (RPA)

RPA is an acceptance route used when a provider informs UCAS of applicants it has accepted outside of the normal application process (e.g. individuals who have applied directly to the provider).

### Reporting groups

#### Ethnic group

High level grouping of ethnic origin as declared by the applicant: 'White', 'Black', 'Asian', 'Mixed', 'Other', 'Unknown'. Applicants who declare themselves as 'Unknown' ethnic origin are not reported in these tables, but are included in the associated csv data file.

#### POLAR3 quintile

Developed by HEFCE, POLAR3 classifies small areas across the UK into five groups according to their level of young participation in Higher Education. Each of these groups represents around 20 per cent of young people and is ranked from Quintile 1 (areas with the lowest young participation rates, considered as the most disadvantaged) to Quintile 5 (highest young participation rates, considered most advantaged). POLAR3 is based on the participation rates of young people between 2005 and 2009 who entered Higher Education between 2005-06 and 2010-11, therefore is most suitable for applicants aged 19 and under. These groups are assigned using the postcode declared by the applicant at the time of their application. If a UK postcode is invalid, considered unsafe for measurement or there is no link to Census geography possible then the applicant is not assigned to a quintile. Applicants with no POLAR3 quintile are not reported.

#### Sex

Sex as declared by the applicant.

### **SIMD quintile**

Scottish index of multiple deprivation (SIMD) for 2012 identifies small area concentrations of multiple deprivation across all of Scotland, providing a relative measure of deprivation amongst 6505 small areas (data zones) based on 7 socio-economic domains. These small areas are classified into five groups ranked from Quintile 1 (considered the most deprived) to Quintile 5 (considered least deprived), with equal populations in each quintile. Quintiles are assigned using the postcode declared by the applicant, applicants declaring invalid postcodes are classified as 'Not assigned' and are not reported.

SIMD is only defined for applicants domiciled in Scotland, therefore any applicants domiciled outside of Scotland cannot be assigned to an SIMD quintile and so are not reported for this measure.

SIMD is only reported for providers in Scotland. Application and entry rates by SIMD are reported in the 2016 End of Cycle Report and the 2016 cycle January deadline application rate report.

### **Statistics reported in the tables**

#### **All placed applicants**

The number of applicants placed for entry into higher education at the provider through one of their choices, including any choices made through Extra, or via Adjustment, Clearing or RPA.

#### **All placed applicants per 10,000 population**

The number of total UK domiciled 18 year old placed applicants for entry into higher education at the provider divided by the number of UK 18 year olds in the population, multiplied by 10,000. This gives the number of 18 year olds, for every 10,000 in the population, that were placed at the provider through one of their choices, including any choices made through Extra, or via Adjustment, Clearing or RPA. It is an alternative way of expressing the entry rate to a provider. By referencing the underlying population this statistic shows how the number of placed applicants is changing in relation to the available pool of potential applicants and so gives the chance that somebody from the group will be placed at a provider.

This statistic is only reported for 18 year olds.

#### **Average offer rate**

The offer rate that you might expect if the predicted grades and subject choice of applicants were the only factors that influenced whether an applicant was made an offer by the provider. The average offer rate is calculated by dividing applicants according to their specific combination of grades (for A levels the best three predicted grades are used, for BTECs, International Baccalaureate and Scottish Highers and Advanced Highers, predicted grades along with any grades already achieved upon applying are used) and subject choice. For each combination the number of main scheme offers is divided by the number of main scheme applications, to give an overall offer rate. This is then multiplied by the number of applications made by the group for which the average offer rate is being calculated (for example POLAR3 quintile 1), to give an average number of offers for that group. These average number of offers are then added together across all combinations of predicted grade and subject and divided by the number of main scheme applications from the group to give the average offer rate.

The average offer rate does not attempt to control for any other factors that may play a part in the decision to make an offer, such as the subject of the qualifications studied, their relevance to a course, or the grade in each subject; higher numbers of A levels being studied; the exact profile of grades predicted; personal statements; teacher references; interviews; or any other criteria (such as work experience or portfolios) that may be part of the admissions decision.

This statistic is only reported for 18 year olds.



### Contribution of group to the average offer rate

The way in which the average offer rate is defined means that the pattern of application and offers of a group (for example POLAR3 quintile 1) will always contribute, in part, to the average offer rate for that group. When this contribution is large, the average offer rate will mainly reflect the patterns for the group, meaning that the value of the average offer rate will be similar to the offer rate, the percentage point difference statistic will be small, and any real difference between the offer rate and what might be expected given the predicted grades and subject choices of the applicants will be difficult to detect.

Values of the contribution of group to the average offer rate range between 0 and 1. The closer the value is to 1 the greater the contribution a group makes to its own average offer rate.

This statistic is only reported for 18 year olds.

### Placed June deadline applicants

An applicant who has been placed for entry into higher education at the provider through a June deadline application.

### Placed June deadline applicants per 10,000 population

The number of UK domiciled 18 year old placed June deadline applicants at the provider divided by the number of UK 18 year olds in the population, multiplied by 10,000. This gives the number of 18 year olds, for every 10,000 in the population, that were placed at the provider through one of their June deadline applications. It is an alternative way of expressing the entry rate to a provider, but for placed June deadline applicants only. By referencing the underlying population this statistic shows how the number of placed June deadline applicants is changing in relation to the available pool of potential 18 year old applicants and so gives the chance that somebody from the group will be placed at a provider through a June deadline application.

This statistic is only reported for 18 year olds.

### June deadline applications

An application (or choice) to a course in higher education to the provider that is made by the June 30 deadline. Each applicant can make up to five choices this way. The number of June deadline applications does not include choices made through the following routes: Clearing, Extra, Adjustment and RPAs. Applications made to October deadline courses received after the October deadline are not included in these statistics.

### June deadline applicants

The number of applicants that made at least one application to the provider by the June 30 deadline.

### June deadline applicants per 10,000 population

The number of UK domiciled 18 year old June deadline applicants to the provider divided by the number of UK 18 year olds in the population, multiplied by 10,000. This gives the number of 18 year olds, for every 10,000 in the population, who applied by the June 30 deadline. It is equivalent to the application rate. By referencing the underlying population this statistic shows how the number of June deadline applicants is changing in relation to the available pool of potential 18 year old applicants and so gives the chance that somebody from the group will apply to a provider by the June 30 deadline.

This statistic is only reported for 18 year olds.

### Offers

An offer is defined as a provider's decision in response to an application to offer a place to an applicant, often subject to the applicant satisfying academic and/or other criteria, via a June deadline application (i.e. does not cover choices made through the following routes: Clearing, Extra, Adjustment and RPAs).

### Offer rate

The number of offers made divided by the number of June deadline applications. This gives the proportion of all June deadline applications to the provider that received an offer.

### Percentage point difference between offer rate and average offer rate

The offer rate minus the average offer rate.

The percentage point difference can be compared to the expected range of statistical variation resulting from the calculation of the average offer rate using the Average Offer Rate Lookup Table. Where the value of the percentage point difference lies outside of this range, the percentage point difference may be considered to represent a real difference between the offer rate and the average offer rate.

### Other definitions

#### Age

This analysis uses country-specific age definitions that align with the cut off points for school and college cohorts within the different administrations of the UK. For England and Wales, ages are defined on the 31 August, for Northern Ireland on the 1 July and for Scotland on the 28 February the following year. Defining ages in this way matches the assignment of children to school cohorts. For applicants outside of the UK a cohort cut off of 31 August has been used.

#### Provider

A higher education provider - a university or college.

#### UK domiciled

Declared area of permanent residence within England, Northern Ireland, Scotland and Wales. Applicants from the Channel Islands and Isle of Man are not included.