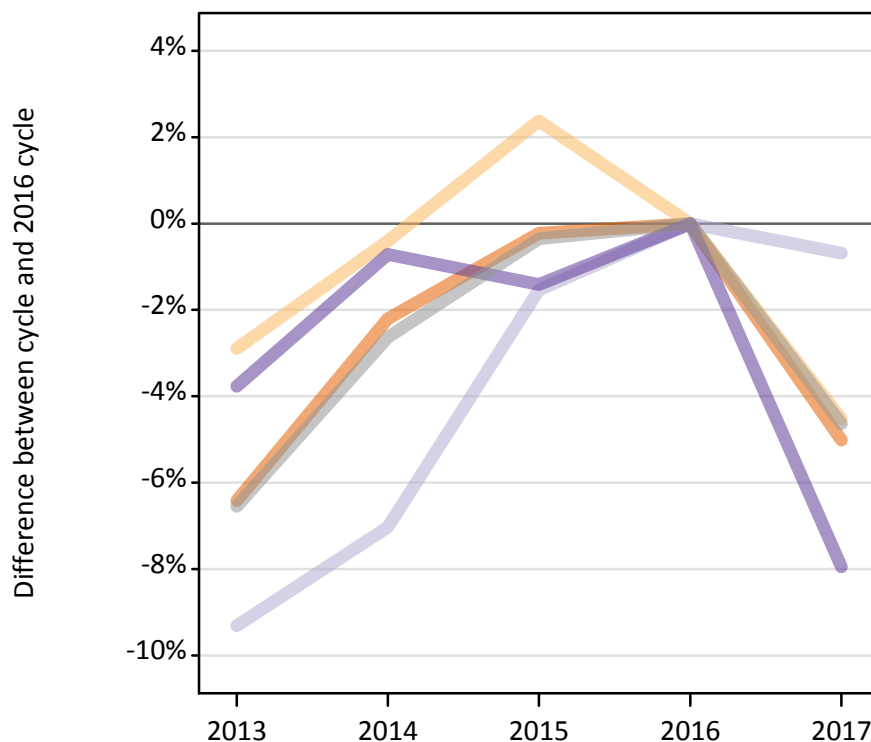
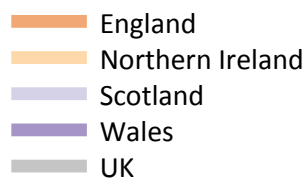


Applications by country and type of provider at the 15 January deadline

D.5.1 Applications by domicile and country of provider : All domiciles

Difference between cycle and 2016 cycle



D.5.2 Applications by domicile and country of provider : All domiciles

Domicile of applicant and country of provider		2013	2014	2015	2016	2017
All domiciles	England	2,036,020	2,127,670	2,170,680	2,175,610	2,066,600
	Northern Ireland	59,120	60,640	62,330	60,880	58,130
	Scotland	260,440	266,990	282,760	287,180	285,210
	Wales	95,020	98,040	97,350	98,740	90,890
	UK	2,450,590	2,553,340	2,613,120	2,622,410	2,500,830

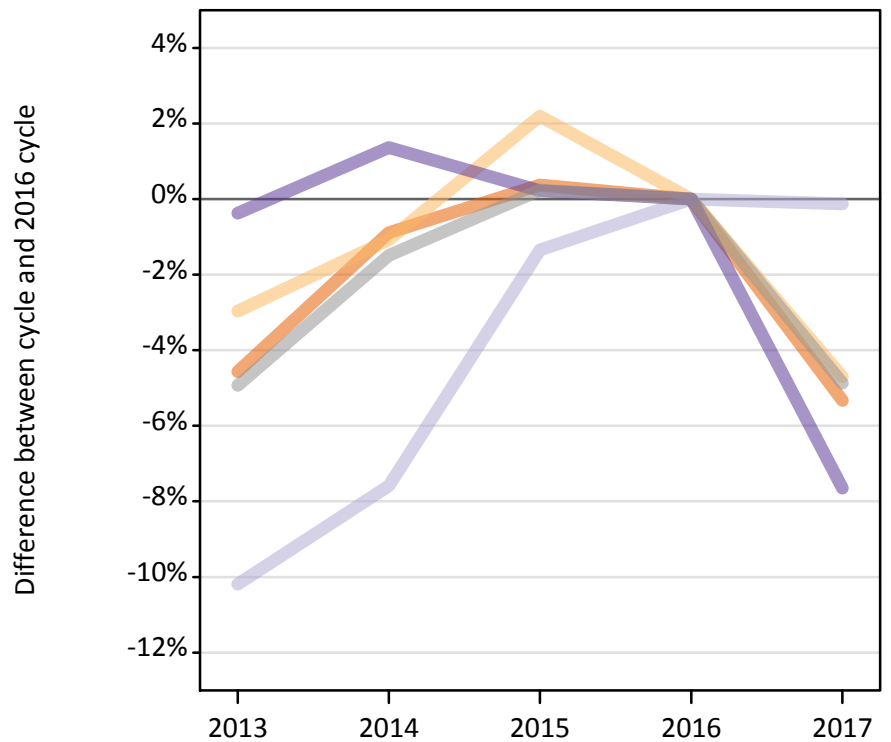
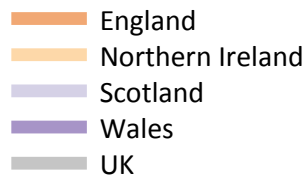
D.5.3 Applications by domicile and country of provider : All domiciles

Difference between cycle and 2016 cycle

Domicile of applicant and country of provider		2013	2014	2015	2016	2017
All domiciles	England	-6%	-2%	-0%	0%	-5%
	Northern Ireland	-3%	-0%	2%	0%	-5%
	Scotland	-9%	-7%	-2%	0%	-1%
	Wales	-4%	-1%	-1%	0%	-8%
	UK	-7%	-3%	-0%	0%	-5%

D.5.4 Applications by domicile and country of provider : UK

Difference between cycle and 2016 cycle



D.5.5 Applications by domicile and country of provider : UK

Domicile of applicant and country of provider		2013	2014	2015	2016	2017
UK	England	1,735,650	1,802,440	1,825,450	1,818,660	1,721,740
	Northern Ireland	55,120	56,190	58,050	56,800	54,130
	Scotland	200,940	206,760	220,730	223,730	223,460
	Wales	85,880	87,380	86,390	86,200	79,610
	UK	2,077,580	2,152,760	2,190,610	2,185,390	2,078,940

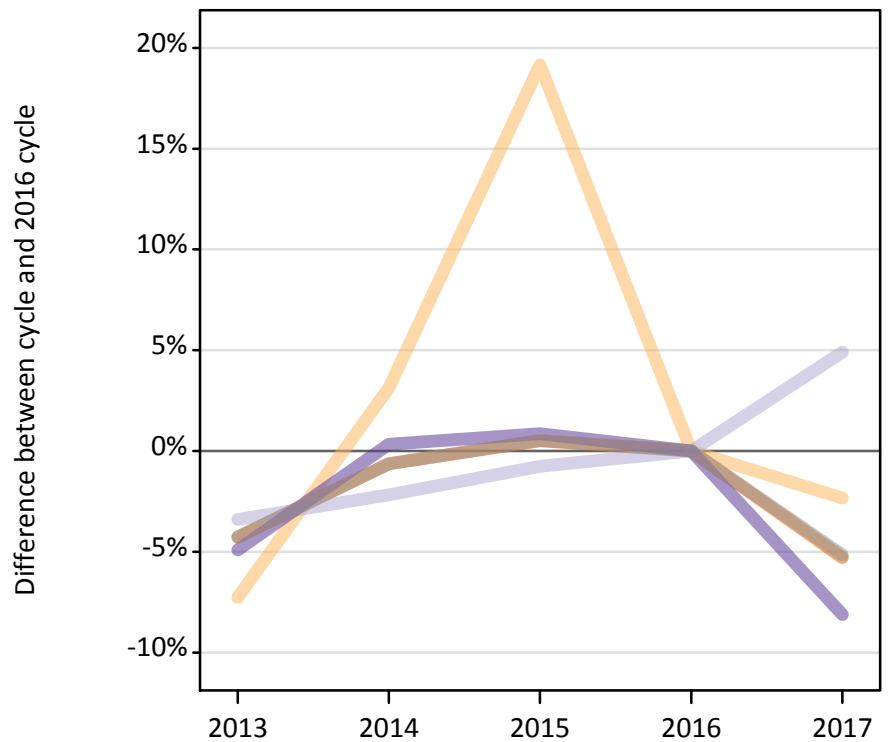
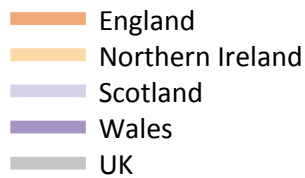
D.5.6 Applications by domicile and country of provider : UK

Difference between cycle and 2016 cycle

Domicile of applicant and country of provider		2013	2014	2015	2016	2017
UK	England	-5%	-1%	0%	0%	-5%
	Northern Ireland	-3%	-1%	2%	0%	-5%
	Scotland	-10%	-8%	-1%	0%	-0%
	Wales	-0%	1%	0%	0%	-8%
	UK	-5%	-1%	0%	0%	-5%

D.5.7 Applications by domicile and country of provider : England

Difference between cycle and 2016 cycle



D.5.8 Applications by domicile and country of provider : England

Domicile of applicant and country of provider		2013	2014	2015	2016	2017
England	England	1,655,250	1,718,100	1,738,000	1,729,150	1,637,710
	Northern Ireland	2,340	2,600	3,010	2,520	2,460
	Scotland	35,190	35,630	36,140	36,420	38,210
	Wales	46,720	49,300	49,560	49,130	45,150
	UK	1,739,490	1,805,630	1,826,710	1,817,220	1,723,530

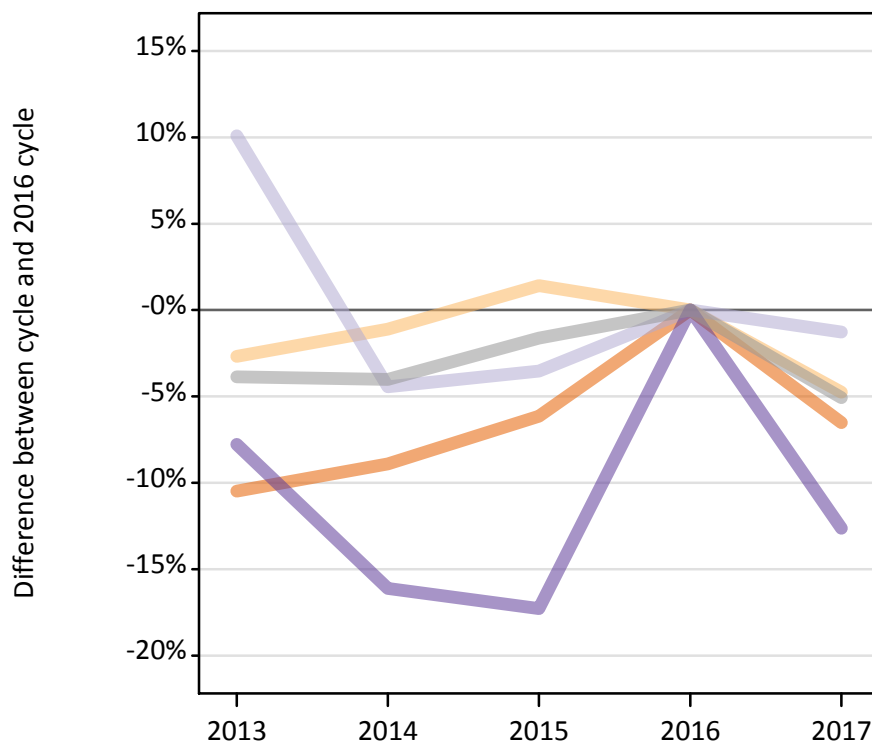
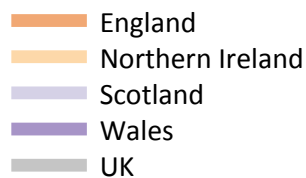
D.5.9 Applications by domicile and country of provider : England

Difference between cycle and 2016 cycle

Domicile of applicant and country of provider		2013	2014	2015	2016	2017
England	England	-4%	-1%	1%	0%	-5%
	Northern Ireland	-7%	3%	19%	0%	-2%
	Scotland	-3%	-2%	-1%	0%	5%
	Wales	-5%	0%	1%	0%	-8%
	UK	-4%	-1%	1%	0%	-5%

D.5.10 Applications by domicile and country of provider : Northern Ireland

Difference between cycle and 2016 cycle



D.5.11 Applications by domicile and country of provider : Northern Ireland

Domicile of applicant and country of provider		2013	2014	2015	2016	2017
Northern Ireland	England	24,820	25,260	26,020	27,730	25,920
	Northern Ireland	52,510	53,360	54,720	53,950	51,390
	Scotland	9,900	8,600	8,680	9,000	8,880
	Wales	1,270	1,160	1,140	1,380	1,200
	UK	88,500	88,370	90,550	92,060	87,390

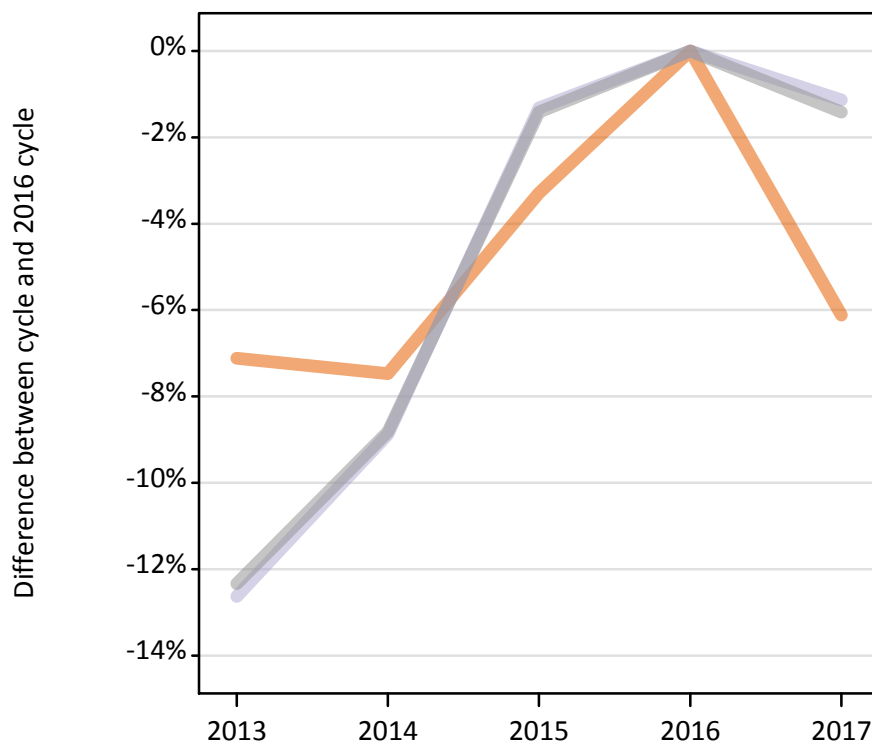
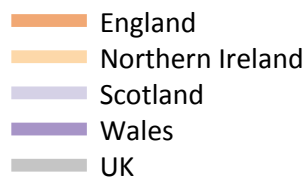
D.5.12 Applications by domicile and country of provider : Northern Ireland

Difference between cycle and 2016 cycle

Domicile of applicant and country of provider		2013	2014	2015	2016	2017
Northern Ireland	England	-10%	-9%	-6%	0%	-7%
	Northern Ireland	-3%	-1%	1%	0%	-5%
	Scotland	10%	-4%	-4%	0%	-1%
	Wales	-8%	-16%	-17%	0%	-13%
	UK	-4%	-4%	-2%	0%	-5%

D.5.13 Applications by domicile and country of provider : Scotland

Difference between cycle and 2016 cycle



D.5.14 Applications by domicile and country of provider : Scotland

Domicile of applicant and country of provider		2013	2014	2015	2016	2017
Scotland	England	8,940	8,910	9,310	9,630	9,040
	Northern Ireland	190	140	220	220	180
	Scotland	154,830	161,480	174,880	177,220	175,200
	Wales	210	220	220	210	200
	UK	164,170	170,750	184,630	187,270	184,620

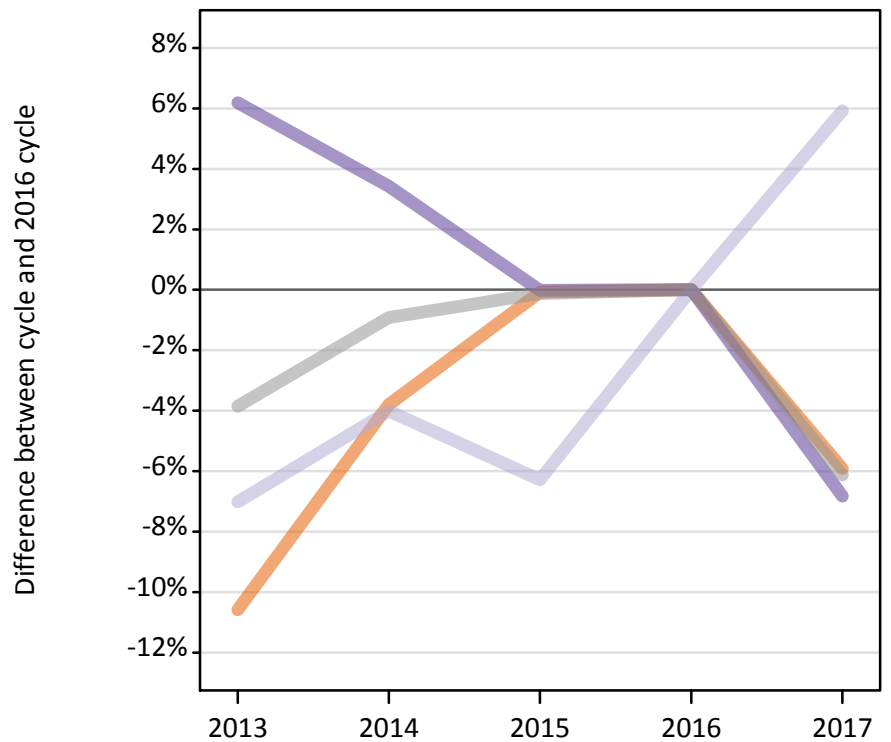
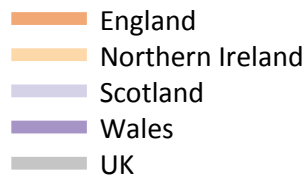
D.5.15 Applications by domicile and country of provider : Scotland

Difference between cycle and 2016 cycle

Domicile of applicant and country of provider		2013	2014	2015	2016	2017
Scotland	England	-7%	-7%	-3%	0%	-6%
	Northern Ireland	-17%	-37%	-2%	0%	-18%
	Scotland	-13%	-9%	-1%	0%	-1%
	Wales	2%	6%	5%	0%	-5%
	UK	-12%	-9%	-1%	0%	-1%

D.5.16 Applications by domicile and country of provider : Wales

Difference between cycle and 2016 cycle



D.5.17 Applications by domicile and country of provider : Wales

Domicile of applicant and country of provider		2013	2014	2015	2016	2017
Wales	England	46,640	50,180	52,120	52,160	49,070
	Northern Ireland	90	90	110	100	100
	Scotland	1,020	1,050	1,030	1,100	1,160
	Wales	37,680	36,700	35,480	35,480	33,060
	UK	85,420	88,020	88,730	88,840	83,400

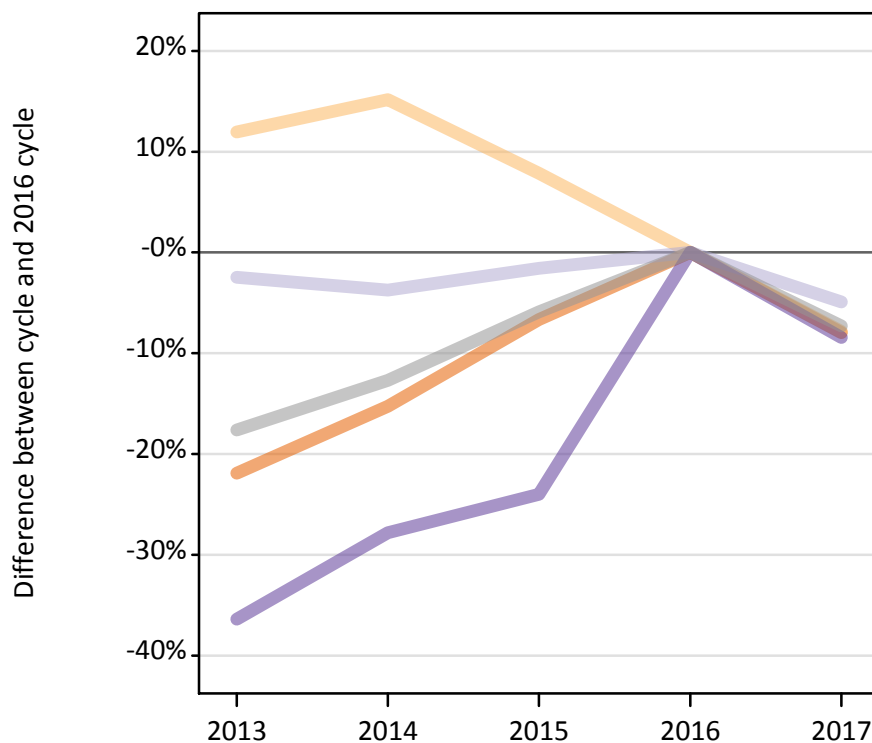
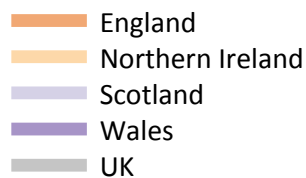
D.5.18 Applications by domicile and country of provider : Wales

Difference between cycle and 2016 cycle

Domicile of applicant and country of provider		2013	2014	2015	2016	2017
Wales	England	-11%	-4%	-0%	0%	-6%
	Northern Ireland	-15%	-12%	7%	0%	-1%
	Scotland	-7%	-4%	-6%	0%	6%
	Wales	6%	3%	-0%	0%	-7%
	UK	-4%	-1%	-0%	0%	-6%

D.5.19 Applications by domicile and country of provider : EU (excluding UK)

Difference between cycle and 2016 cycle



D.5.20 Applications by domicile and country of provider : EU (excluding UK)

Domicile of applicant and country of provider		2013	2014	2015	2016	2017
EU (excluding UK)	England	115,790	125,650	138,400	148,280	136,460
	Northern Ireland	3,280	3,370	3,160	2,930	2,700
	Scotland	43,340	42,770	43,740	44,430	42,250
	Wales	4,210	4,780	5,030	6,620	6,060
	UK	166,620	176,560	190,330	202,250	187,470

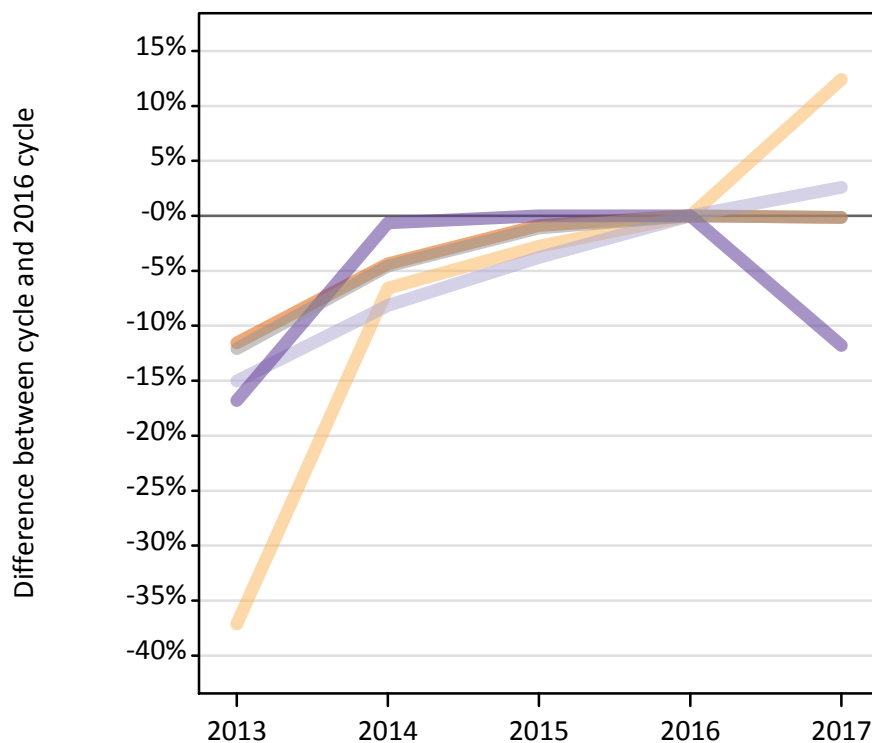
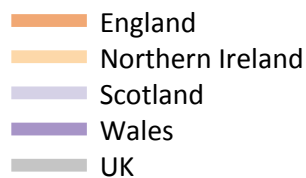
D.5.21 Applications by domicile and country of provider : EU (excluding UK)

Difference between cycle and 2016 cycle

Domicile of applicant and country of provider		2013	2014	2015	2016	2017
EU (excluding UK)	England	-22%	-15%	-7%	0%	-8%
	Northern Ireland	12%	15%	8%	0%	-8%
	Scotland	-2%	-4%	-2%	0%	-5%
	Wales	-36%	-28%	-24%	0%	-8%
	UK	-18%	-13%	-6%	0%	-7%

D.5.22 Applications by domicile and country of provider : Not EU

Difference between cycle and 2016 cycle



D.5.23 Applications by domicile and country of provider : Not EU

Domicile of applicant and country of provider		2013	2014	2015	2016	2017
Not EU	England	184,580	199,580	206,840	208,680	208,390
	Northern Ireland	730	1,080	1,120	1,150	1,300
	Scotland	16,160	17,460	18,300	19,010	19,510
	Wales	4,930	5,890	5,920	5,920	5,230
	UK	206,390	224,010	232,180	234,770	234,420

D.5.24 Applications by domicile and country of provider : Not EU

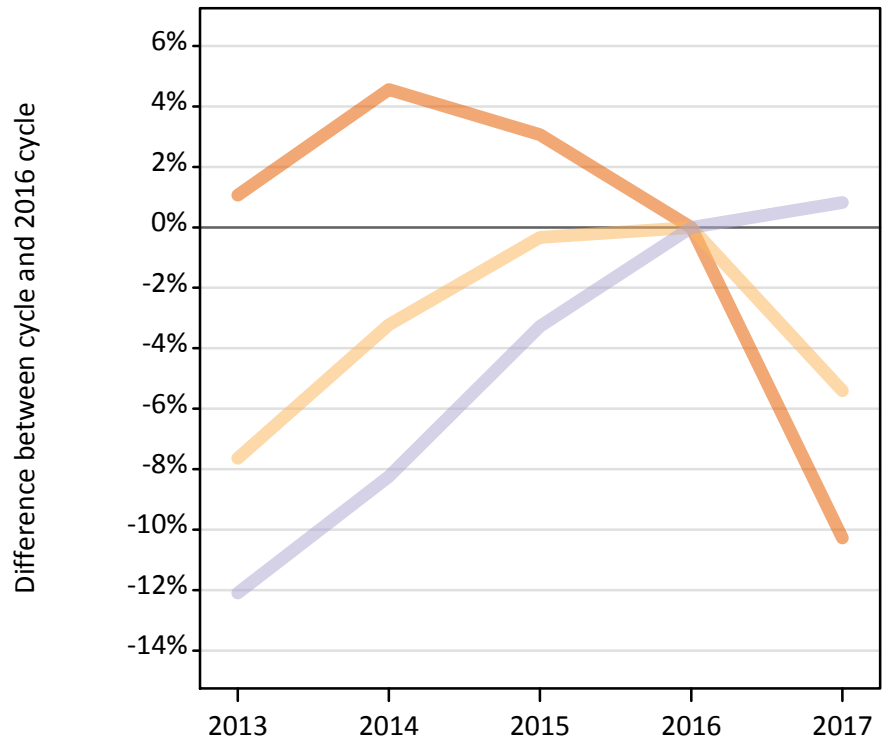
Difference between cycle and 2016 cycle

Domicile of applicant and country of provider		2013	2014	2015	2016	2017
Not EU	England	-12%	-4%	-1%	0%	-0%
	Northern Ireland	-37%	-7%	-3%	0%	12%
	Scotland	-15%	-8%	-4%	0%	3%
	Wales	-17%	-1%	0%	0%	-12%
	UK	-12%	-5%	-1%	0%	-0%

D.5.25 Applications by domicile and tariff group of provider : All domiciles

Difference between cycle and 2016 cycle

- 1. Lower tariff
- 2. Medium tariff
- 3. Higher tariff



D.5.26 Applications by domicile and tariff group of provider : All domiciles

Domicile of applicant and tariff group of provider		2013	2014	2015	2016	2017
All domiciles	1. Lower tariff	834,350	863,180	850,820	825,550	740,710
	2. Medium tariff	763,120	799,630	823,520	826,280	781,580
	3. Higher tariff	853,120	890,530	938,780	970,570	978,540
	All	2,450,590	2,553,340	2,613,120	2,622,410	2,500,830

D.5.27 Applications by domicile and tariff group of provider : All domiciles

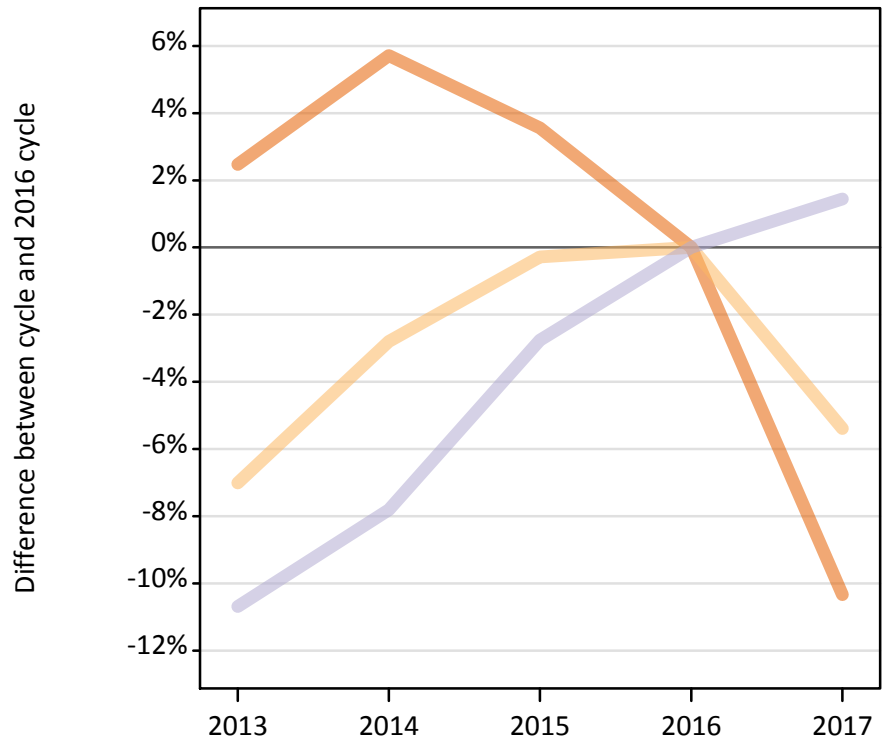
Difference between cycle and 2016 cycle

Domicile of applicant and tariff group of provider		2013	2014	2015	2016	2017
All domiciles	1. Lower tariff	1%	5%	3%	0%	-10%
	2. Medium tariff	-8%	-3%	-0%	0%	-5%
	3. Higher tariff	-12%	-8%	-3%	0%	1%
	All	-7%	-3%	-0%	0%	-5%

D.5.28 Applications by domicile and tariff group of provider : UK

Difference between cycle and 2016 cycle

- 1. Lower tariff
- 2. Medium tariff
- 3. Higher tariff



D.5.29 Applications by domicile and tariff group of provider : UK

Domicile of applicant and tariff group of provider		2013	2014	2015	2016	2017
UK	1. Lower tariff	774,580	799,070	782,840	755,910	677,770
	2. Medium tariff	665,650	695,820	713,810	715,840	677,230
	3. Higher tariff	637,360	657,880	693,960	713,640	723,940
	All	2,077,580	2,152,760	2,190,610	2,185,390	2,078,940

D.5.30 Applications by domicile and tariff group of provider : UK

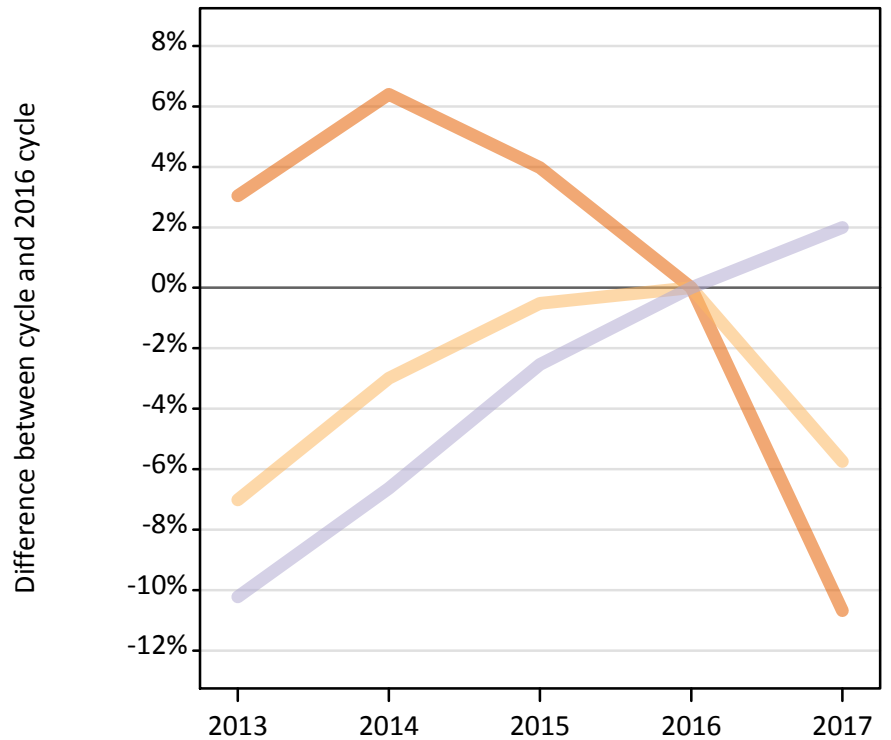
Difference between cycle and 2016 cycle

Domicile of applicant and tariff group of provider		2013	2014	2015	2016	2017
UK	1. Lower tariff	2%	6%	4%	0%	-10%
	2. Medium tariff	-7%	-3%	-0%	0%	-5%
	3. Higher tariff	-11%	-8%	-3%	0%	1%
	All	-5%	-1%	0%	0%	-5%

D.5.31 Applications by domicile and tariff group of provider : England

Difference between cycle and 2016 cycle

- 1. Lower tariff
- 2. Medium tariff
- 3. Higher tariff



D.5.32 Applications by domicile and tariff group of provider : England

Domicile of applicant and tariff group of provider		2013	2014	2015	2016	2017
England	1. Lower tariff	697,330	720,040	703,630	676,740	604,430
	2. Medium tariff	529,820	552,740	566,880	569,800	537,060
	3. Higher tariff	512,340	532,850	556,190	570,690	582,040
	All	1,739,490	1,805,630	1,826,710	1,817,220	1,723,530

D.5.33 Applications by domicile and tariff group of provider : England

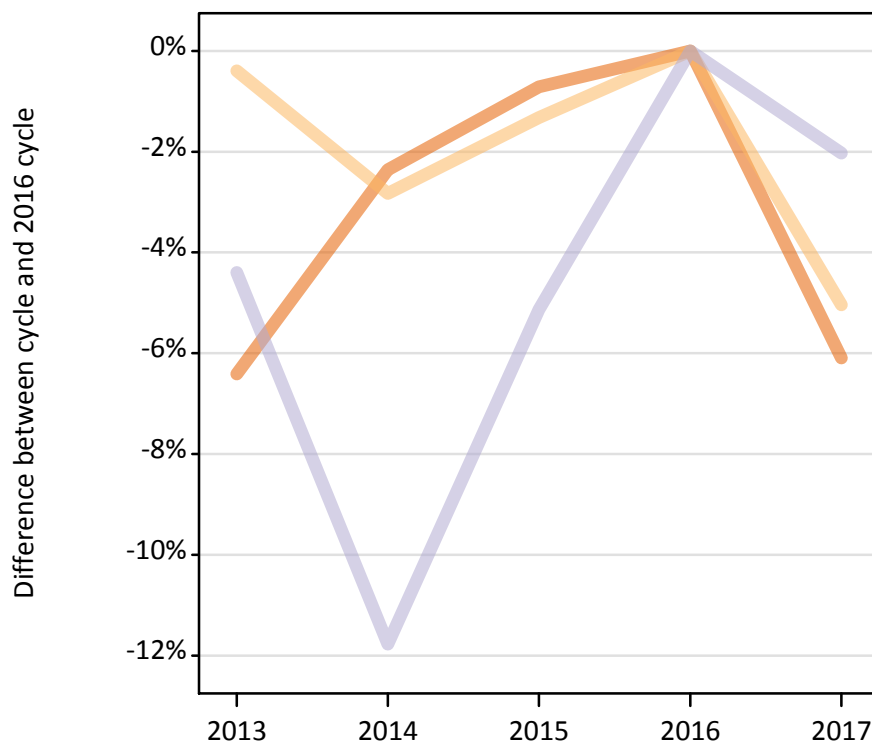
Difference between cycle and 2016 cycle

Domicile of applicant and tariff group of provider		2013	2014	2015	2016	2017
England	1. Lower tariff	3%	6%	4%	0%	-11%
	2. Medium tariff	-7%	-3%	-1%	0%	-6%
	3. Higher tariff	-10%	-7%	-3%	0%	2%
	All	-4%	-1%	1%	0%	-5%

D.5.34 Applications by domicile and tariff group of provider : Northern Ireland

Difference between cycle and 2016 cycle

- 1. Lower tariff
- 2. Medium tariff
- 3. Higher tariff



D.5.35 Applications by domicile and tariff group of provider : Northern Ireland

Domicile of applicant and tariff group of provider		2013	2014	2015	2016	2017
Northern Ireland	1. Lower tariff	40,700	42,470	43,180	43,490	40,840
	2. Medium tariff	34,010	33,180	33,690	34,140	32,420
	3. Higher tariff	13,790	12,730	13,680	14,420	14,130
	All	88,500	88,370	90,550	92,060	87,390

D.5.36 Applications by domicile and tariff group of provider : Northern Ireland

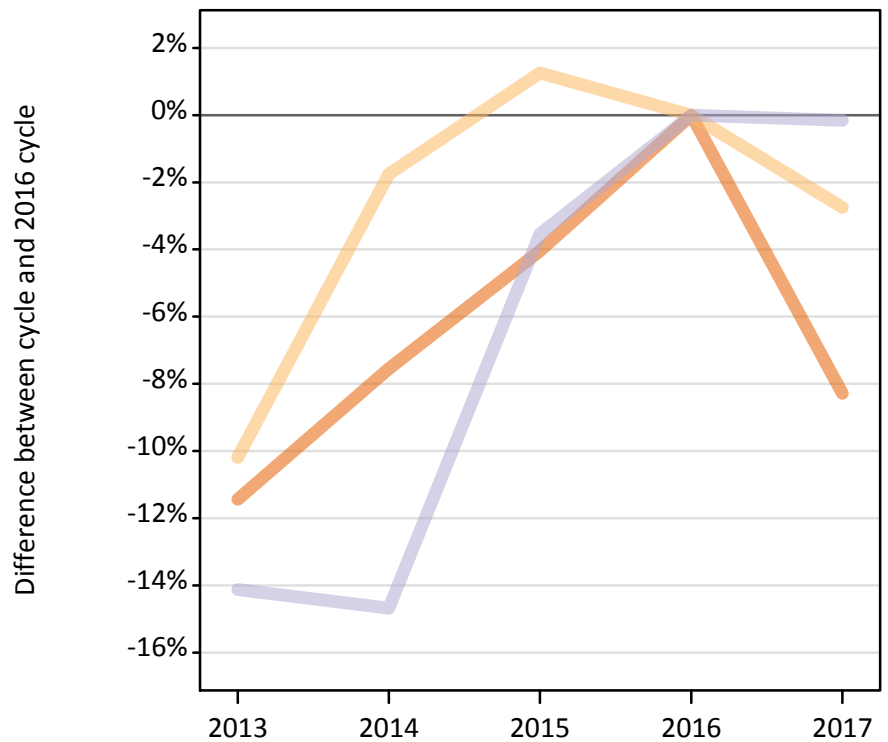
Difference between cycle and 2016 cycle

Domicile of applicant and tariff group of provider		2013	2014	2015	2016	2017
Northern Ireland	1. Lower tariff	-6%	-2%	-1%	0%	-6%
	2. Medium tariff	-0%	-3%	-1%	0%	-5%
	3. Higher tariff	-4%	-12%	-5%	0%	-2%
	All	-4%	-4%	-2%	0%	-5%

D.5.37 Applications by domicile and tariff group of provider : Scotland

Difference between cycle and 2016 cycle

- 1. Lower tariff
- 2. Medium tariff
- 3. Higher tariff



D.5.38 Applications by domicile and tariff group of provider : Scotland

Domicile of applicant and tariff group of provider		2013	2014	2015	2016	2017
Scotland	1. Lower tariff	2,280	2,380	2,470	2,570	2,360
	2. Medium tariff	74,930	81,970	84,480	83,440	81,150
	3. Higher tariff	86,960	86,400	97,670	101,260	101,110
	All	164,170	170,750	184,630	187,270	184,620

D.5.39 Applications by domicile and tariff group of provider : Scotland

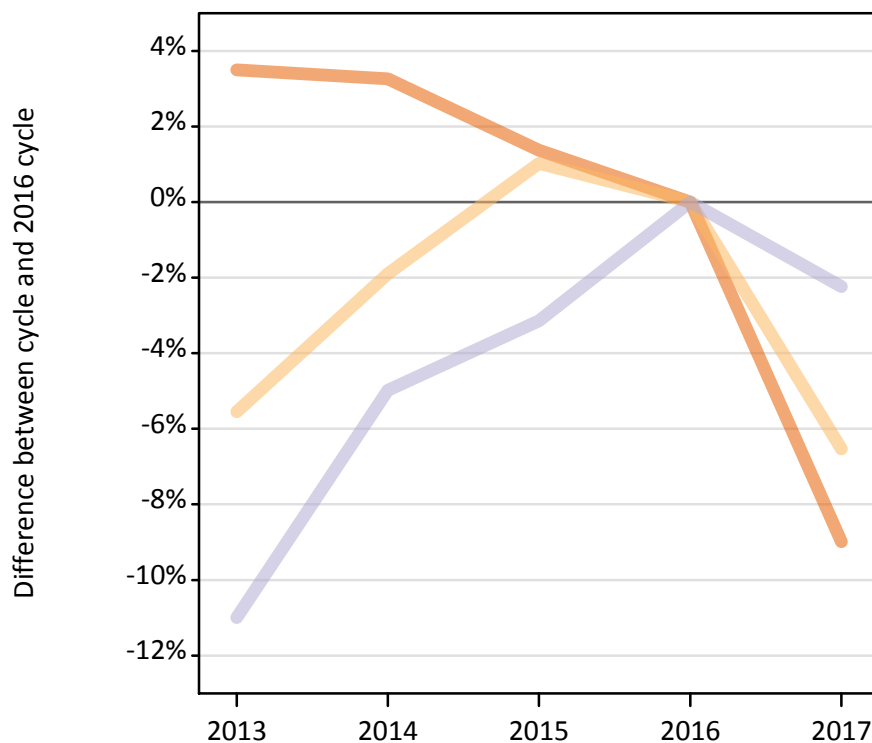
Difference between cycle and 2016 cycle

Domicile of applicant and tariff group of provider		2013	2014	2015	2016	2017
Scotland	1. Lower tariff	-11%	-8%	-4%	0%	-8%
	2. Medium tariff	-10%	-2%	1%	0%	-3%
	3. Higher tariff	-14%	-15%	-4%	0%	-0%
	All	-12%	-9%	-1%	0%	-1%

D.5.40 Applications by domicile and tariff group of provider : Wales

Difference between cycle and 2016 cycle

- 1. Lower tariff
- 2. Medium tariff
- 3. Higher tariff



D.5.41 Applications by domicile and tariff group of provider : Wales

Domicile of applicant and tariff group of provider		2013	2014	2015	2016	2017
Wales	1. Lower tariff	34,270	34,190	33,570	33,110	30,140
	2. Medium tariff	26,880	27,920	28,760	28,460	26,600
	3. Higher tariff	24,270	25,910	26,410	27,270	26,660
	All	85,420	88,020	88,730	88,840	83,400

D.5.42 Applications by domicile and tariff group of provider : Wales

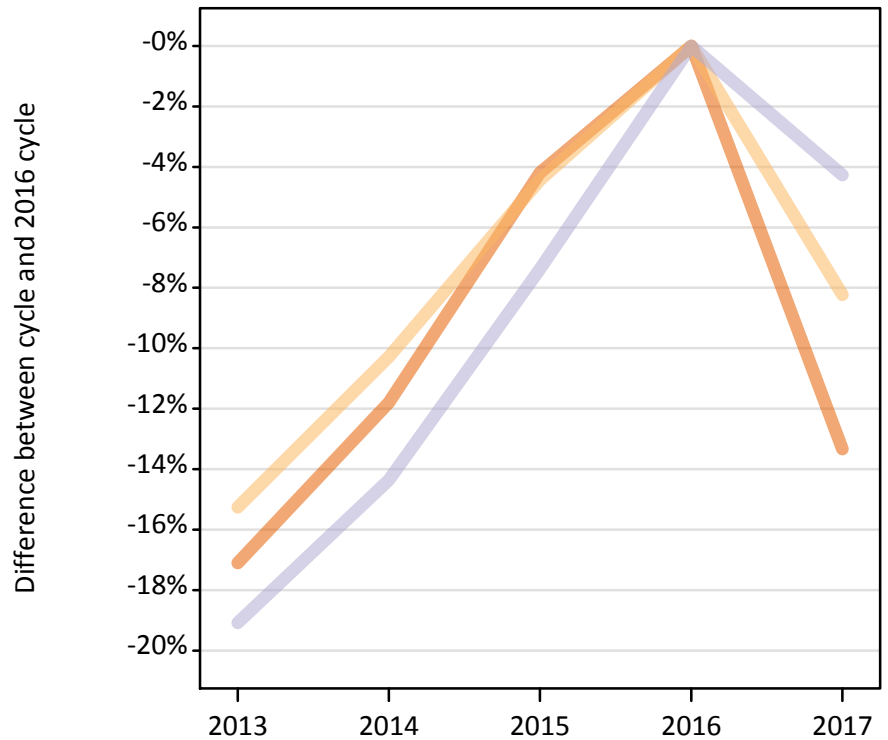
Difference between cycle and 2016 cycle

Domicile of applicant and tariff group of provider		2013	2014	2015	2016	2017
Wales	1. Lower tariff	3%	3%	1%	0%	-9%
	2. Medium tariff	-6%	-2%	1%	0%	-7%
	3. Higher tariff	-11%	-5%	-3%	0%	-2%
	All	-4%	-1%	-0%	0%	-6%

D.5.43 Applications by domicile and tariff group of provider : EU (excluding UK)

Difference between cycle and 2016 cycle

- 1. Lower tariff
- 2. Medium tariff
- 3. Higher tariff



D.5.44 Applications by domicile and tariff group of provider : EU (excluding UK)

Domicile of applicant and tariff group of provider		2013	2014	2015	2016	2017
EU (excluding UK)	1. Lower tariff	36,290	38,610	41,940	43,780	37,940
	2. Medium tariff	46,450	49,180	52,380	54,810	50,300
	3. Higher tariff	83,880	88,770	96,010	103,660	99,230
	All	166,620	176,560	190,330	202,250	187,470

D.5.45 Applications by domicile and tariff group of provider : EU (excluding UK)

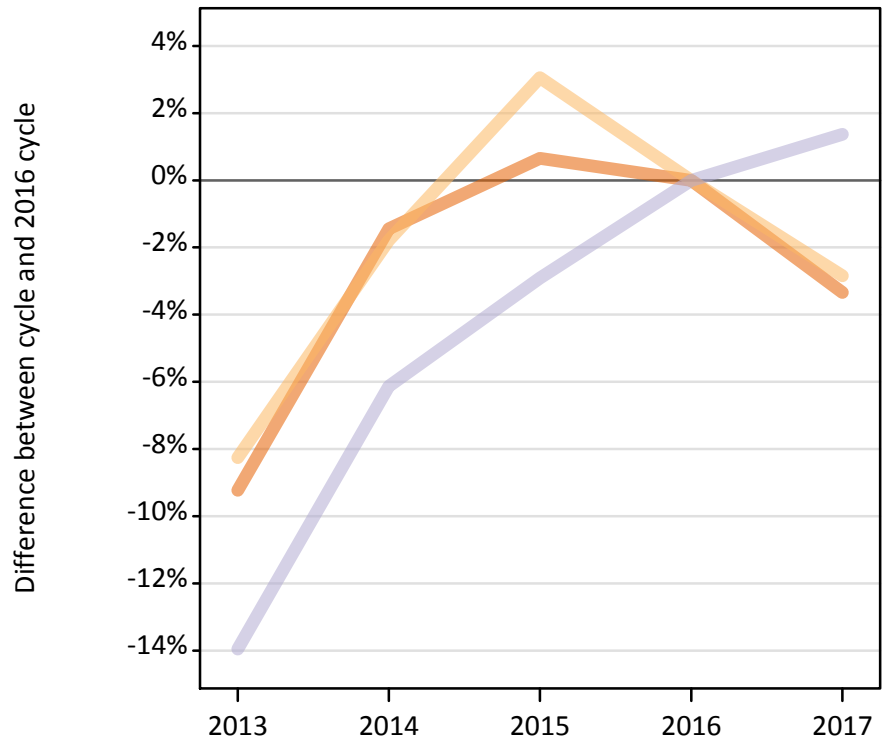
Difference between cycle and 2016 cycle

Domicile of applicant and tariff group of provider		2013	2014	2015	2016	2017
EU (excluding UK)	1. Lower tariff	-17%	-12%	-4%	0%	-13%
	2. Medium tariff	-15%	-10%	-4%	0%	-8%
	3. Higher tariff	-19%	-14%	-7%	0%	-4%
	All	-18%	-13%	-6%	0%	-7%

D.5.46 Applications by domicile and tariff group of provider : Not EU

Difference between cycle and 2016 cycle

- 1. Lower tariff
- 2. Medium tariff
- 3. Higher tariff



D.5.47 Applications by domicile and tariff group of provider : Not EU

Domicile of applicant and tariff group of provider		2013	2014	2015	2016	2017
Not EU	1. Lower tariff	23,480	25,490	26,040	25,870	25,000
	2. Medium tariff	51,030	54,640	57,330	55,630	54,050
	3. Higher tariff	131,880	143,880	148,810	153,270	155,370
	All	206,390	224,010	232,180	234,770	234,420

D.5.48 Applications by domicile and tariff group of provider : Not EU

Difference between cycle and 2016 cycle

Domicile of applicant and tariff group of provider		2013	2014	2015	2016	2017
Not EU	1. Lower tariff	-9%	-1%	1%	0%	-3%
	2. Medium tariff	-8%	-2%	3%	0%	-3%
	3. Higher tariff	-14%	-6%	-3%	0%	1%
	All	-12%	-5%	-1%	0%	-0%

D.5.49 Technical notes and definitions

Applicants have been able to submit applications for all 2017 courses since early September.

Applicants who submit their applications to UCAS by the January deadline are considered as 'on time' applicants for the large majority of courses offered through UCAS.

This statistical release covers all Main Scheme applicants who submit their applications to UCAS by the January deadline, including those who have applied for courses with a 15 October deadline. Counts of RPAs (records of prior acceptance) are not included.

Counts of the number of applicants reported have been rounded to the nearest 10 applicants, this may result in instances where totals do not equal the sum of the components. Proportional changes have been rounded to the nearest whole percentage point.

Age

This statistical release uses country-specific age definitions which align with the cut off points for school/college cohorts within the different administrations of the UK. For England and Wales ages are defined on the 31 August, for Northern Ireland on the 1 July and for Scotland on the 28 February the following year. Defining ages in this way matches the assignment of children to school cohorts. For applicants outside of the UK the cohort cut off for England and Wales has been used.

Applicant

A person who has made an application in the UCAS system during the cycle reported (including applications for deferred entry). Records of prior acceptance (RPAs) are excluded.

Application

An application to a course at a provider made by an applicant in the UCAS main scheme. Applicants may make up to five main scheme applications.

Country of provider

An applicant may be counted once for each provider country they have applied to in the main scheme. If an applicant has applied to providers in multiple countries then the applicant is counted once within each country of provider applied to.

This statistical release excludes a small number of applications to a provider based in the EU.

Domicile

Declared area of permanent residence. The Channel Islands and the Isle of Man have been assigned as 'Not EU'.

First time applicant

An applicant that did not apply to the UCAS scheme in the previous cycle.

Main scheme

The main UCAS application scheme through which up to five providers/courses can be applied to. This opens in September and closes to new applications on 30 June the following year.

Reapplicant

An applicant that applied to the UCAS scheme in the previous cycle.

Subject group

The JACS3 classification used to classify courses into subject groups.

Tariff group of provider

Providers are grouped as higher, medium or lower tariff based on their average levels of attainment of their accepted applicants (summarised through UCAS Tariff points) in recent cycles. Each group of providers accounted for around a third of all UK 18 year old acceptances in recent cycles.