

## B80 Bristol University of the West of England (UWE)

**Cycle years:** 2012 - 2017

**Cycle Reference Point:** End of Cycle

**Applicant coverage:** UK domiciled

**Reporting groups:** Sex, POLAR3, ethnic group

**Applicant statistics:** June deadline applicants, placed June deadline applicants, all placed applicants, June deadline applicants per 10,000 population, placed June deadline applicants per 10,000 population, all placed applicants per 10,000 population

**Application statistics:** June deadline applications, offers, offer rate, average offer rate, percentage point difference between offer rate and average offer rate, contribution of group to the average offer rate

**Non-disclosure controls:** To avoid the disclosure of information about any individual the following measures are taken

- Applicants, placed applicants, applications and offers are rounded to the nearest 5.
- Applicants/placed applicants per 10,000 population figures are reported as 0 if the applicant/placed applicant figures are rounded to 0.
- All statistics related to the offer rate are not reported when the number of applications for a group is less than 10. The percentage point difference between the offer rate and the average offer rate is not reported when the number of applications for a group is less than 50.
- Offer rates are reported as 0% if there are fewer than 5 offers, and 100% if the number of offers is within 5 of the number of applications. When the offer rate is reported as 0% or 100%, it is reported in italics.

### Contents:

18 year old applicants:	P.1
18 year old applications:	P.2
18 year old applicants by sex:	P.3
18 year old applications by sex:	P.4
18 year old applicants by POLAR3 quintile:	P.7
18 year old applications by POLAR3 quintile:	P.8
18 year old applicants by ethnic group:	P.11
18 year old applications by ethnic group:	P.12
Applicants (all ages):	P.15
Applications (all ages):	P.16
Applicants (all ages) by sex:	P.17
Applications (all ages) by sex:	P.18
Applicants (all ages) by POLAR3 quintile:	P.19
Applications (all ages) by POLAR3 quintile:	P.20
Applicants (all ages) by ethnic group:	P.21
Applications (all ages) by ethnic group:	P.22

## P.1 18 year old applicants

Statistic	2012	2013	2014	2015	2016	2017
June deadline applicants	11,700	11,495	10,630	10,630	9,610	11,540
Placed June deadline applicants	2,330	2,380	2,155	2,020	1,855	2,120
All placed applicants	2,670	2,700	2,420	2,270	2,245	2,550
June deadline applicants per 10,000 population	151.3	151.0	141.1	138.7	128.2	155.7
Placed June deadline applicants per 10,000	30.1	31.2	28.6	26.3	24.7	28.6
All placed applicants per 10,000 population	34.5	35.5	32.1	29.6	29.9	34.4

## P.2 18 year old applications

Statistic	2012	2013	2014	2015	2016	2017
June deadline applications	12,610	12,345	11,220	11,260	10,225	12,420
Offers	9,380	9,390	8,595	8,425	7,640	9,910
Offer rate	74.4%	76.1%	76.6%	74.8%	74.7%	79.8%

### P.3 18 year old applicants by sex

Statistic	Sex	2012	2013	2014	2015	2016	2017
June deadline applicants	Men	5,210	5,060	4,715	4,645	4,045	5,080
	Women	6,490	6,435	5,915	5,985	5,565	6,460
Placed June deadline applicants	Men	1,110	1,190	1,040	995	910	990
	Women	1,220	1,185	1,115	1,020	940	1,130
All placed applicants	Men	1,275	1,315	1,170	1,095	1,070	1,190
	Women	1,400	1,385	1,250	1,170	1,175	1,360
June deadline applicants per 10,000 population	Men	131.4	129.6	121.7	118.4	105.3	133.7
	Women	172.2	173.6	161.6	160.1	152.4	178.9
Placed June deadline applicants per 10,000 population	Men	27.9	30.5	26.9	25.4	23.7	26.1
	Women	32.4	32.0	30.5	27.3	25.8	31.3
All placed applicants per 10,000 population	Men	32.1	33.7	30.2	28.0	27.9	31.4
	Women	37.1	37.3	34.2	31.4	32.1	37.6

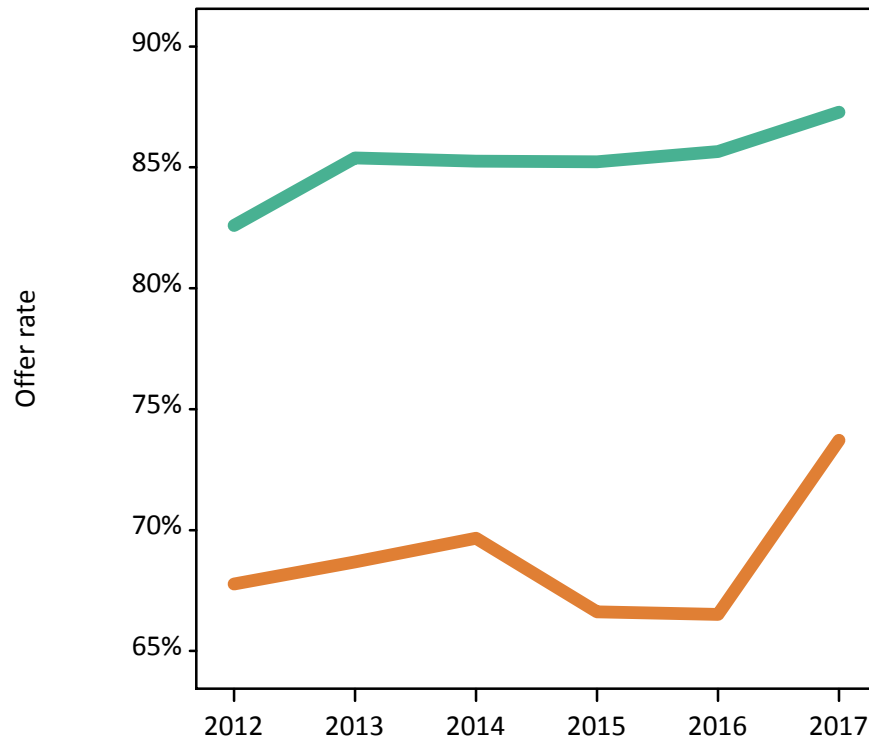
### P.4 18 year old applications by sex

Statistic	Sex	2012	2013	2014	2015	2016	2017
June deadline applications	Men	5,625	5,455	5,010	4,960	4,370	5,570
	Women	6,985	6,890	6,205	6,295	5,855	6,855
Offers	Men	4,645	4,660	4,275	4,230	3,745	4,860
	Women	4,735	4,730	4,325	4,195	3,895	5,050
Offer rate	Men	82.6%	85.4%	85.3%	85.2%	85.7%	87.3%
	Women	67.8%	68.7%	69.7%	66.6%	66.5%	73.7%
Average offer rate	Men	83.0%	85.9%	85.9%	85.3%	85.8%	87.1%
	Women	67.5%	68.2%	69.2%	66.5%	66.4%	73.9%
Percentage point difference between offer rate and average offer rate	Men	-0.4	-0.5	-0.6	-0.1	-0.1	0.2
	Women	0.3	0.4	0.5	0.1	0.1	-0.2
Contribution of group to the average offer rate	Men	0.644	0.650	0.651	0.650	0.649	0.642
	Women	0.713	0.723	0.718	0.724	0.738	0.709

### P.5 18 year old offer rate by sex

Note: The line for a group is not plotted when that group made fewer than 10 applications in any of the years from 2012-2017.

Men  
Women



### P.6 Percentage point difference between 18 year old offer rate and average offer rate by sex

Note: The line for a group is not plotted when that group made fewer than 50 applications in any of the years from 2012-2017.

Men  
Women



## P.7 18 year old applicants by POLAR3 quintile

Statistic	POLAR3 quintile	2012	2013	2014	2015	2016	2017
June deadline applicants	Quintile 1	1,325	1,345	1,340	1,390	1,335	1,615
	Quintile 2	1,785	1,880	1,725	1,750	1,630	1,935
	Quintile 3	2,285	2,230	2,035	2,015	1,820	2,280
	Quintile 4	2,880	2,790	2,490	2,530	2,190	2,595
	Quintile 5	3,405	3,235	3,020	2,925	2,620	3,080
Placed June deadline applicants	Quintile 1	310	295	280	280	275	315
	Quintile 2	320	360	355	320	300	350
	Quintile 3	455	430	425	385	360	435
	Quintile 4	550	580	485	490	435	470
	Quintile 5	685	705	610	535	480	550
All placed applicants	Quintile 1	345	340	320	315	330	365
	Quintile 2	380	405	390	365	360	420
	Quintile 3	510	485	470	435	420	505
	Quintile 4	640	670	540	545	525	575
	Quintile 5	795	795	695	600	605	675
June deadline applicants per 10,000 population	Quintile 1	92.9	96.5	96.4	99.2	99.0	121.4
	Quintile 2	119.0	127.7	117.9	117.8	112.6	136.2
	Quintile 3	148.0	146.1	135.1	131.2	121.1	153.0
	Quintile 4	181.4	178.4	161.7	161.5	141.8	170.0
	Quintile 5	202.7	195.6	185.1	174.7	158.5	187.6
Placed June deadline applicants per 10,000 population	Quintile 1	21.6	21.3	20.1	20.0	20.3	23.5
	Quintile 2	21.4	24.4	24.3	21.6	20.7	24.8
	Quintile 3	29.5	28.3	28.3	25.2	23.9	29.1
	Quintile 4	34.8	37.1	31.4	31.3	28.2	30.6
	Quintile 5	40.8	42.6	37.3	32.1	29.1	33.6
All placed applicants per 10,000 population	Quintile 1	24.2	24.3	22.9	22.5	24.6	27.5
	Quintile 2	25.2	27.4	26.7	24.7	24.8	29.6
	Quintile 3	32.9	31.9	31.4	28.4	27.8	33.8
	Quintile 4	40.4	42.9	35.0	34.9	34.0	37.7
	Quintile 5	47.3	48.1	42.7	35.9	36.5	41.1

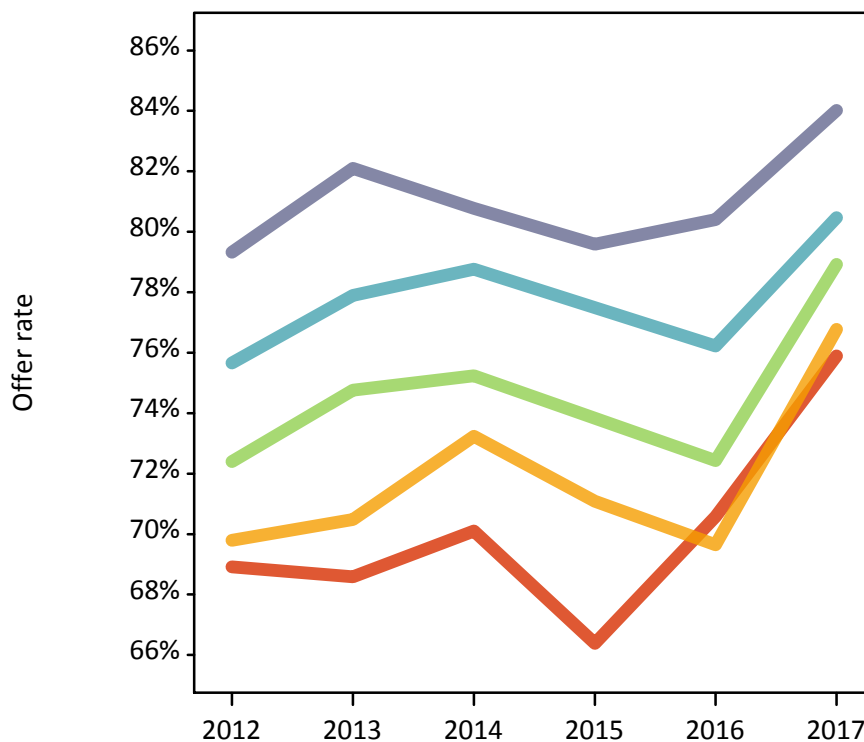
## P.8 18 year old applications by POLAR3 quintile

Statistic	POLAR3 quintile	2012	2013	2014	2015	2016	2017
June deadline applications	Quintile 1	1,540	1,505	1,435	1,530	1,490	1,790
	Quintile 2	1,920	2,025	1,840	1,855	1,735	2,090
	Quintile 3	2,470	2,400	2,170	2,140	1,935	2,460
	Quintile 4	3,055	2,975	2,625	2,655	2,305	2,760
	Quintile 5	3,605	3,420	3,135	3,055	2,735	3,285
Offers	Quintile 1	1,060	1,035	1,005	1,015	1,055	1,355
	Quintile 2	1,340	1,430	1,345	1,320	1,210	1,605
	Quintile 3	1,790	1,795	1,630	1,580	1,405	1,945
	Quintile 4	2,310	2,320	2,065	2,060	1,755	2,220
	Quintile 5	2,860	2,805	2,535	2,430	2,200	2,760
Offer rate	Quintile 1	68.9%	68.6%	70.1%	66.4%	70.6%	75.9%
	Quintile 2	69.8%	70.5%	73.2%	71.1%	69.6%	76.8%
	Quintile 3	72.4%	74.8%	75.2%	73.8%	72.4%	78.9%
	Quintile 4	75.7%	77.9%	78.8%	77.5%	76.2%	80.5%
	Quintile 5	79.3%	82.1%	80.8%	79.6%	80.4%	84.0%
Average offer rate	Quintile 1	69.6%	70.4%	71.4%	69.5%	71.6%	77.1%
	Quintile 2	70.3%	71.5%	72.7%	72.1%	70.8%	77.7%
	Quintile 3	72.7%	75.4%	75.0%	73.6%	73.4%	78.7%
	Quintile 4	75.3%	77.1%	78.4%	76.2%	75.5%	80.0%
	Quintile 5	78.8%	80.9%	81.0%	78.8%	79.0%	83.4%
Percentage point difference between offer rate and average offer rate	Quintile 1	-0.7	-1.8	-1.3	-3.1	-1.0	-1.2
	Quintile 2	-0.5	-1.0	0.5	-1.0	-1.1	-0.9
	Quintile 3	-0.3	-0.7	0.3	0.3	-1.0	0.2
	Quintile 4	0.4	0.8	0.3	1.3	0.7	0.4
	Quintile 5	0.5	1.2	-0.2	0.8	1.4	0.6
Contribution of group to the average offer rate	Quintile 1	0.214	0.209	0.228	0.216	0.245	0.225
	Quintile 2	0.235	0.243	0.247	0.239	0.243	0.243
	Quintile 3	0.266	0.263	0.272	0.263	0.263	0.263
	Quintile 4	0.308	0.298	0.299	0.299	0.290	0.288
	Quintile 5	0.370	0.362	0.376	0.352	0.369	0.352

### P.9 18 year old offer rate by POLAR3 quintile

Note: The line for a group is not plotted when that group made fewer than 10 applications in any of the years from 2012-2017.

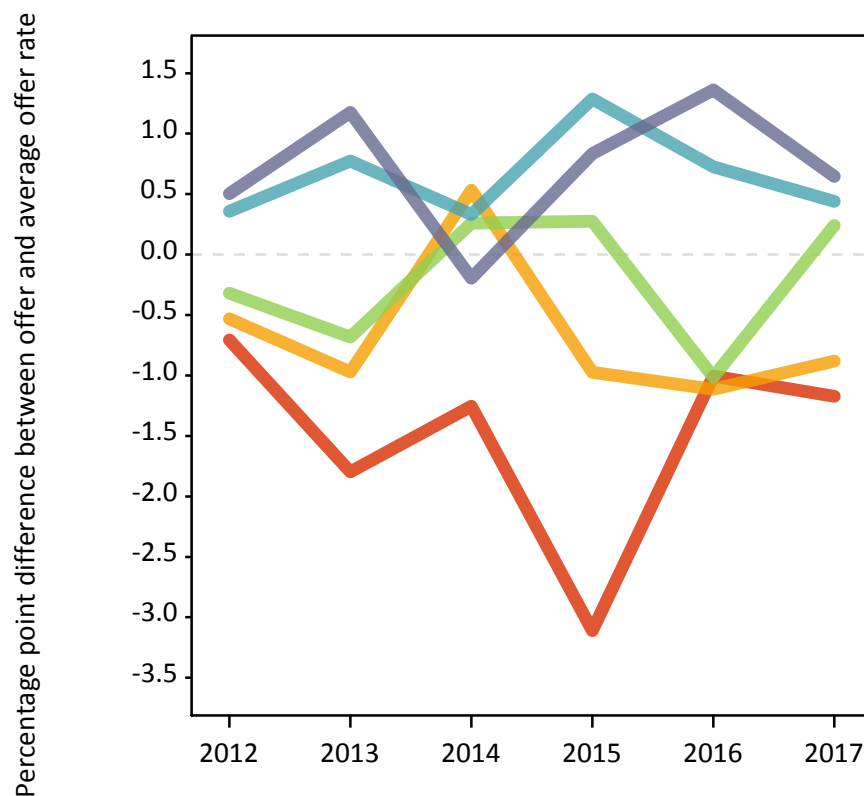
- Quintile 1
- Quintile 2
- Quintile 3
- Quintile 4
- Quintile 5



### P.10 Percentage point difference between 18 year old offer rate and average offer rate by POLAR3 quintile

Note: The line for a group is not plotted when that group made fewer than 50 applications in any of the years from 2012-2017.

- Quintile 1
- Quintile 2
- Quintile 3
- Quintile 4
- Quintile 5



## P.11 18 year old applicants by ethnic group

Statistic	Ethnic group	2012	2013	2014	2015	2016	2017
June deadline applicants	Asian	435	475	545	560	505	670
	Black	335	345	340	365	310	395
	Mixed	320	350	345	380	310	430
	White	10,530	10,225	9,330	9,210	8,365	9,900
	Other	50	65	50	75	90	100
Placed June deadline applicants	Asian	90	100	135	120	125	130
	Black	60	70	60	65	50	50
	Mixed	75	75	70	90	65	90
	White	2,090	2,110	1,875	1,715	1,595	1,830
	Other	15	15	15	20	20	15
All placed applicants	Asian	110	130	155	145	155	170
	Black	75	85	80	75	80	70
	Mixed	90	90	85	100	80	110
	White	2,380	2,370	2,075	1,915	1,900	2,160
	Other	15	20	15	20	25	25
June deadline applicants per 10,000 population	Asian	67.3	72.0	80.7	79.3	70.3	90.8
	Black	119.7	116.9	111.8	115.0	98.4	125.8
	Mixed	122.1	129.8	119.6	123.6	98.8	134.3
	White	163.1	162.5	151.2	147.8	138.3	166.8
	Other	58.8	70.6	52.6	75.7	90.4	97.1
Placed June deadline applicants per 10,000 population	Asian	13.9	15.0	19.6	17.1	17.1	17.4
	Black	20.6	23.9	19.1	20.4	15.3	16.2
	Mixed	28.8	27.7	24.7	29.2	21.0	28.0
	White	32.3	33.5	30.4	27.5	26.4	30.8
	Other	15.8	16.5	14.0	18.7	18.1	16.5
All placed applicants per 10,000 population	Asian	16.8	19.4	23.2	20.8	21.7	23.4
	Black	26.3	28.6	26.7	23.6	25.2	22.2
	Mixed	34.2	34.0	29.5	32.1	25.1	33.6
	White	36.8	37.7	33.6	30.7	31.4	36.4
	Other	18.1	19.9	15.0	21.8	24.1	26.2

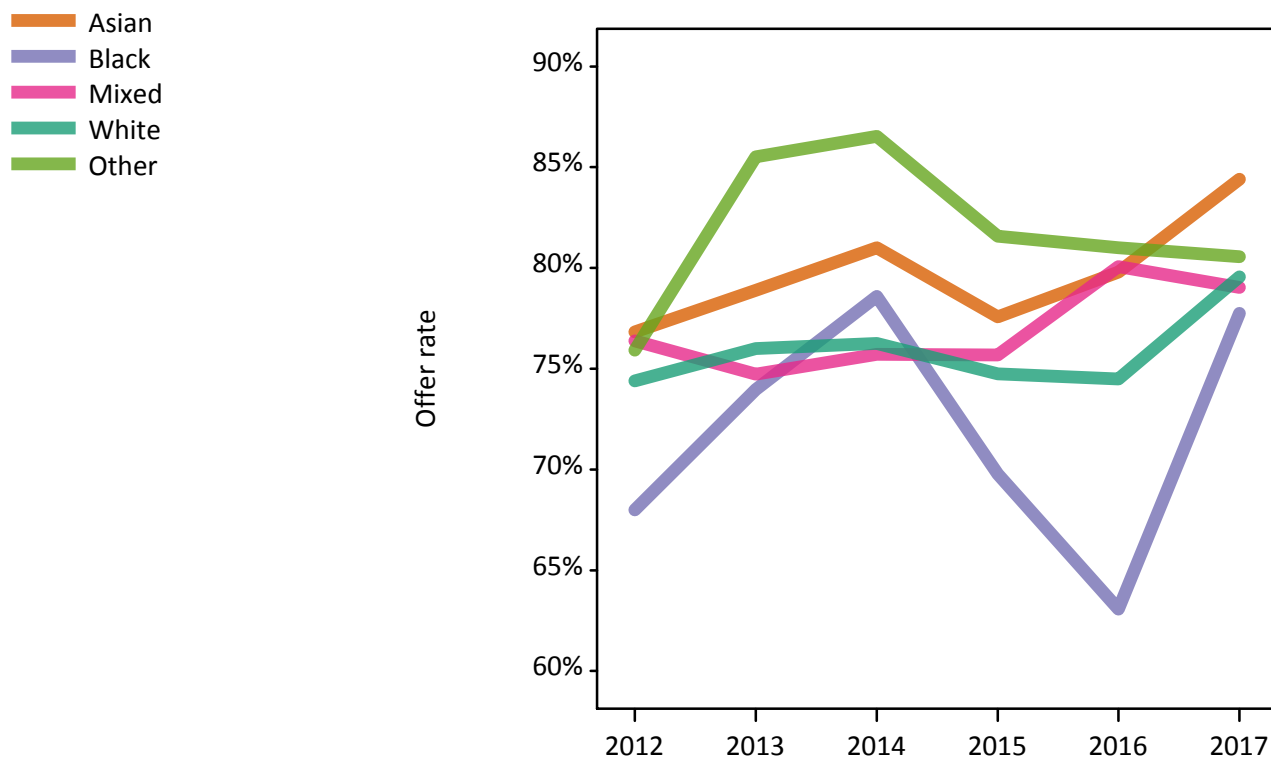


## P.12 18 year old applications by ethnic group

Statistic	Ethnic group	2012	2013	2014	2015	2016	2017
June deadline applications	Asian	490	505	595	600	570	745
	Black	355	360	355	385	325	425
	Mixed	345	370	350	405	325	475
	White	11,340	11,000	9,845	9,750	8,875	10,620
	Other	55	70	50	75	100	110
Offers	Asian	380	400	480	465	455	630
	Black	240	265	280	270	205	330
	Mixed	260	280	265	305	260	375
	White	8,435	8,360	7,505	7,285	6,610	8,450
	Other	40	60	45	60	80	85
Offer rate	Asian	76.8%	78.9%	81.0%	77.6%	79.8%	84.4%
	Black	68.0%	74.0%	78.6%	69.8%	63.1%	77.8%
	Mixed	76.4%	74.7%	75.7%	75.7%	80.1%	79.0%
	White	74.4%	76.0%	76.2%	74.7%	74.5%	79.6%
	Other	75.9%	85.5%	86.5%	81.6%	81.0%	80.6%
Average offer rate	Asian	78.9%	80.2%	82.4%	80.7%	79.2%	83.3%
	Black	72.2%	77.2%	78.8%	73.0%	68.3%	79.3%
	Mixed	75.5%	76.1%	76.4%	75.9%	77.3%	83.3%
	White	74.2%	75.8%	76.1%	74.4%	74.4%	79.3%
	Other	80.7%	84.6%	90.0%	86.2%	81.7%	85.4%
Percentage point difference between offer rate and average offer rate	Asian	-2.0	-1.3	-1.4	-3.2	0.6	1.1
	Black	-4.2	-3.2	-0.2	-3.2	-5.2	-1.5
	Mixed	0.9	-1.4	-0.6	-0.2	2.8	-4.3
	White	0.2	0.2	0.1	0.4	0.0	0.2
	Other	-4.8	0.9	-3.5	-4.7	-0.7	-4.9
Contribution of group to the average offer rate	Asian	0.163	0.159	0.178	0.165	0.191	0.164
	Black	0.141	0.123	0.156	0.139	0.139	0.127
	Mixed	0.108	0.118	0.114	0.122	0.118	0.125
	White	0.913	0.906	0.895	0.883	0.888	0.875
	Other	0.124	0.119	0.080	0.121	0.108	0.125

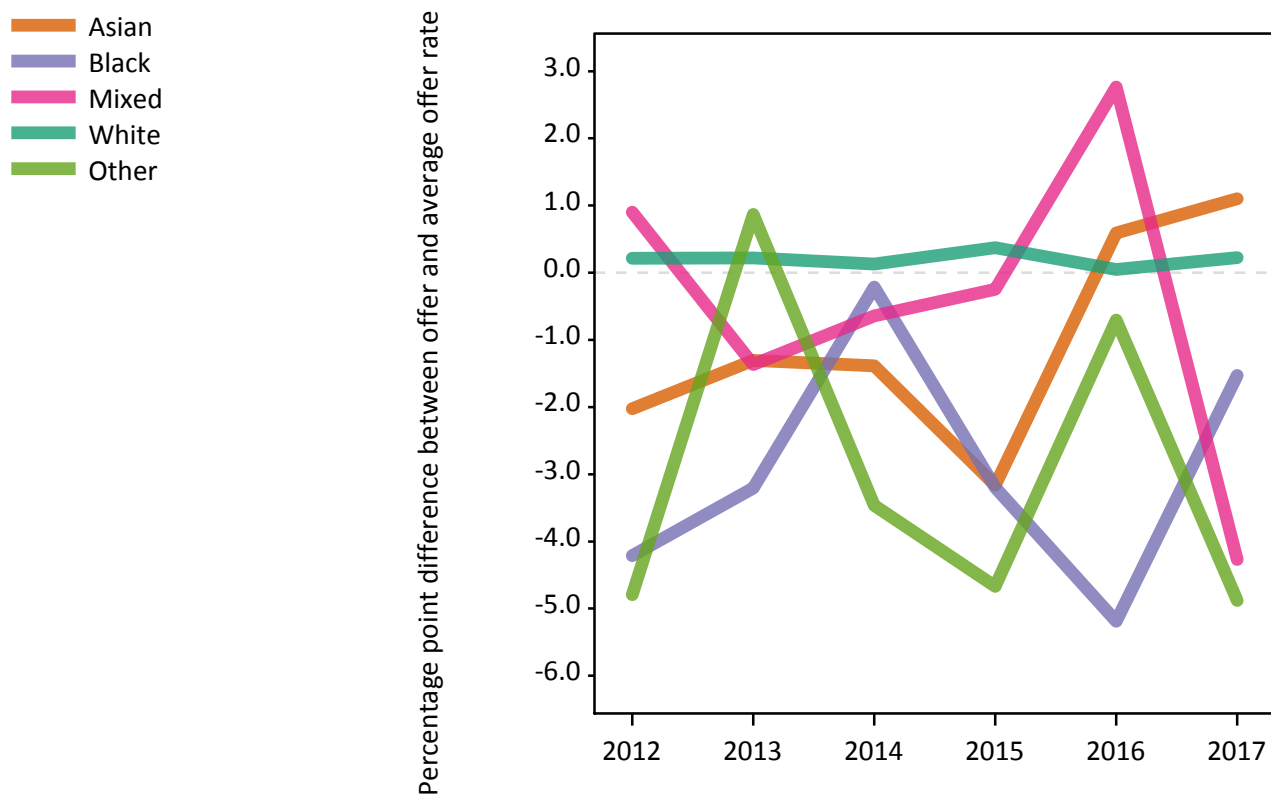
### P.13 18 year old offer rate by ethnic group

Note: The line for a group is not plotted when that group made fewer than 10 applications in any of the years from 2012-2017.



### P.14 Percentage point difference between 18 year old offer rate and average offer rate by ethnic group

Note: The line for a group is not plotted when that group made fewer than 50 applications in any of the years from 2012-2017.



### P.15 Applicants (all ages)

Statistic	2012	2013	2014	2015	2016	2017
June deadline applicants	24,905	25,285	24,180	23,710	22,640	24,600
Placed June deadline applicants	5,210	5,445	5,250	4,970	4,895	5,385
All placed applicants	6,175	6,335	5,910	5,650	5,810	6,390

### P.16 Applications (all ages)

Statistic	2012	2013	2014	2015	2016	2017
June deadline applications	27,660	27,795	26,295	25,790	25,020	27,355
Offers	16,705	17,455	16,670	16,255	15,305	18,960
Offer rate	60.4%	62.8%	63.4%	63.0%	61.2%	69.3%

### P.17 Applicants (all ages) by sex

Statistic	Sex	2012	2013	2014	2015	2016	2017
June deadline applicants	Men	10,815	10,860	10,280	10,005	9,105	10,535
	Women	14,090	14,425	13,900	13,705	13,535	14,065
Placed June deadline applicants	Men	2,435	2,625	2,385	2,315	2,225	2,465
	Women	2,780	2,820	2,865	2,655	2,670	2,920
All placed applicants	Men	2,870	3,005	2,710	2,615	2,655	2,960
	Women	3,305	3,335	3,200	3,030	3,155	3,430

### P.18 Applications (all ages) by sex

Statistic	Sex	2012	2013	2014	2015	2016	2017
June deadline applications	Men	12,065	11,945	11,260	10,980	10,110	11,930
	Women	15,595	15,850	15,040	14,810	14,905	15,425
Offers	Men	8,420	8,805	8,275	8,185	7,400	9,315
	Women	8,285	8,650	8,395	8,070	7,905	9,645
Offer rate	Men	69.8%	73.7%	73.5%	74.5%	73.2%	78.1%
	Women	53.1%	54.6%	55.8%	54.5%	53.0%	62.5%

### P.19 Applicants (all ages) by POLAR3 quintile

Statistic	POLAR3 quintile	2012	2013	2014	2015	2016	2017
June deadline applicants	Quintile 1	3,590	3,675	3,700	3,680	3,740	3,955
	Quintile 2	4,195	4,290	4,165	4,215	4,015	4,315
	Quintile 3	4,800	4,960	4,770	4,510	4,405	4,755
	Quintile 4	5,690	5,800	5,340	5,315	4,935	5,365
	Quintile 5	6,550	6,500	6,150	5,925	5,480	6,130
Placed June deadline applicants	Quintile 1	840	875	835	800	845	890
	Quintile 2	810	890	890	850	820	950
	Quintile 3	1,040	1,040	1,060	970	985	1,050
	Quintile 4	1,145	1,215	1,110	1,100	1,070	1,145
	Quintile 5	1,355	1,405	1,340	1,240	1,155	1,335
All placed applicants	Quintile 1	985	1,010	945	925	995	1,060
	Quintile 2	960	1,010	985	960	970	1,100
	Quintile 3	1,230	1,235	1,190	1,110	1,150	1,230
	Quintile 4	1,365	1,425	1,250	1,235	1,275	1,370
	Quintile 5	1,610	1,635	1,525	1,400	1,400	1,610

### P.20 Applications (all ages) by POLAR3 quintile

Statistic	POLAR3 quintile	2012	2013	2014	2015	2016	2017
June deadline applications	Quintile 1	4,275	4,205	4,210	4,200	4,420	4,610
	Quintile 2	4,645	4,765	4,550	4,555	4,455	4,775
	Quintile 3	5,355	5,505	5,220	4,945	4,870	5,310
	Quintile 4	6,185	6,270	5,720	5,720	5,305	5,855
	Quintile 5	7,110	6,975	6,530	6,300	5,890	6,715
Offers	Quintile 1	2,310	2,310	2,370	2,285	2,450	2,820
	Quintile 2	2,575	2,800	2,680	2,660	2,500	3,160
	Quintile 3	3,180	3,350	3,250	3,105	2,880	3,635
	Quintile 4	3,885	4,080	3,750	3,780	3,390	4,220
	Quintile 5	4,705	4,880	4,585	4,375	4,045	5,065
Offer rate	Quintile 1	54.1%	54.9%	56.3%	54.4%	55.4%	61.2%
	Quintile 2	55.4%	58.8%	59.0%	58.5%	56.0%	66.2%
	Quintile 3	59.3%	60.9%	62.3%	62.8%	59.1%	68.5%
	Quintile 4	62.8%	65.1%	65.5%	66.1%	63.9%	72.0%
	Quintile 5	66.2%	69.9%	70.2%	69.4%	68.7%	75.5%

## P.21 Applicants (all ages) by ethnic group

Statistic	Ethnic group	2012	2013	2014	2015	2016	2017
June deadline applicants	Asian	1,040	1,110	1,280	1,300	1,240	1,455
	Black	1,255	1,205	1,230	1,245	1,155	1,305
	Mixed	755	825	820	890	835	1,015
	White	21,595	21,860	20,605	19,950	19,060	20,415
	Other	155	180	145	195	225	255
Placed June deadline applicants	Asian	190	245	275	245	280	280
	Black	215	240	240	220	210	210
	Mixed	175	200	175	215	190	260
	White	4,580	4,695	4,500	4,235	4,145	4,540
	Other	30	40	30	35	45	55
All placed applicants	Asian	250	315	335	310	355	370
	Black	295	315	315	290	295	290
	Mixed	215	240	205	255	240	310
	White	5,355	5,390	4,985	4,705	4,825	5,290
	Other	35	50	40	40	60	70

## P.22 Applications (all ages) by ethnic group

Statistic	Ethnic group	2012	2013	2014	2015	2016	2017
June deadline applications	Asian	1,205	1,235	1,440	1,445	1,410	1,635
	Black	1,435	1,340	1,390	1,400	1,310	1,485
	Mixed	855	895	875	975	950	1,160
	White	23,880	24,010	22,330	21,610	20,945	22,600
	Other	170	195	155	205	255	295
Offers	Asian	745	825	995	960	935	1,195
	Black	650	650	730	675	580	780
	Mixed	540	560	560	630	605	825
	White	14,610	15,215	14,210	13,765	12,940	15,825
	Other	90	130	105	130	160	215
Offer rate	Asian	62.1%	66.8%	69.1%	66.6%	66.3%	73.2%
	Black	45.3%	48.7%	52.6%	48.3%	44.3%	52.5%
	Mixed	63.0%	62.8%	63.9%	64.6%	63.7%	71.1%
	White	61.2%	63.4%	63.6%	63.7%	61.8%	70.0%
	Other	54.8%	68.0%	68.6%	62.3%	63.3%	72.1%

## Technical Notes and Definitions

### UCAS undergraduate scheme

#### Adjustment

Adjustment allows applicants who have met and exceeded the terms of their conditional firm offer to seek and find a place at another provider whilst keeping their place at their original firm choice provider.

#### Clearing

Clearing is a route for applicants that are not placed and holding no offers to find a place on courses with vacancies.

#### Cycle year

The UCAS application cycle which runs from September to October the following year. For example the 2017 cycle runs from September 2016 through to October 2017.

#### End of cycle

The point in the cycle to which the numbers in this report refer, and the point at which the cycle is closed such that no more applications or offers can be made, and no more applicants can be placed. Numbers reported at the end of cycle exclude information on a small number of applicants who cancelled during the cycle.

#### Extra

Applicants who are unsuccessful in obtaining an offer or decline all offers may be eligible to apply through Extra, where they can apply to one further course at a time. Extra operates from 25 February until early July. It provides applicants who are eligible the possibility of obtaining an offer before exam results are published and Clearing starts.

#### June 30 deadline

The deadline for main scheme applications. Applicants who apply after this date will go directly into Clearing.

#### Record of Prior Acceptance (RPA)

RPA is an acceptance route used when a provider informs UCAS of applicants it has accepted outside of the normal application process (e.g. individuals who have applied directly to the provider).

### Reporting groups

#### Ethnic group

High level grouping of ethnic origin as declared by the applicant: 'White', 'Black', 'Asian', 'Mixed', 'Other', 'Unknown'. Applicants who declare themselves as 'Unknown' ethnic origin are not reported in these tables, but are included in the associated csv data file.

#### POLAR3 quintile

Developed by HEFCE, POLAR3 classifies small areas across the UK into five groups according to their level of young participation in Higher Education. Each of these groups represents around 20 per cent of young people and is ranked from Quintile 1 (areas with the lowest young participation rates, considered as the most disadvantaged) to Quintile 5 (highest young participation rates, considered most advantaged). POLAR3 is based on the participation rates of young people between 2005 and 2009 who entered Higher Education between 2005-06 and 2010-11, therefore is most suitable for applicants aged 19 and under. These groups are assigned using the postcode declared by the applicant at the time of their application. If a UK postcode is invalid, considered unsafe for measurement or there is no link to Census geography possible then the applicant is not assigned to a quintile. Applicants with no POLAR3 quintile are not reported.

#### Sex

Sex as declared by the applicant.

### **SIMD 2016 quintile**

Scottish index of multiple deprivation (SIMD) identifies small area concentrations of multiple deprivation across all of Scotland, providing a relative measure of deprivation amongst 6505 small areas (data zones) based on 7 socio-economic domains. These small areas are classified into five groups ranked from Quintile 1 (considered the most deprived) to Quintile 5 (considered least deprived), with equal populations in each quintile. Quintiles are assigned using the postcode declared by the applicant, applicants declaring invalid postcodes are classified as 'Not assigned' and are not reported.

SIMD is only defined for applicants domiciled in Scotland, therefore any applicants domiciled outside of Scotland cannot be assigned to an SIMD quintile and so are not reported for this measure.

SIMD is only reported for providers in Scotland. Application and entry rates by SIMD are reported in the 2017 End of Cycle Report and the 2017 cycle January deadline application rate report.

### **Statistics reported in the tables**

#### **All placed applicants**

The number of applicants placed for entry into higher education at the provider through one of their choices, including any choices made through Extra, or via Adjustment, Clearing or RPA.

#### **All placed applicants per 10,000 population**

The number of total UK domiciled 18 year old placed applicants for entry into higher education at the provider divided by the number of UK 18 year olds in the population, multiplied by 10,000. This gives the number of 18 year olds, for every 10,000 in the population, that were placed at the provider through one of their choices, including any choices made through Extra, or via Adjustment, Clearing or RPA. It is an alternative way of expressing the entry rate to a provider. By referencing the underlying population this statistic shows how the number of placed applicants is changing in relation to the available pool of potential applicants and so gives the chance that somebody from the group will be placed at a provider.

This statistic is only reported for 18 year olds.

#### **Average offer rate**

The offer rate that you might expect if the predicted grades and subject choice of applicants were the only factors that influenced whether an applicant was made an offer by the provider. The average offer rate is calculated by dividing applicants according to their specific combination of grades (for A levels the best three predicted grades are used, for BTECs, International Baccalaureate and Scottish Highers and Advanced Highers, predicted grades along with any grades already achieved upon applying are used) and subject choice. For each combination the number of main scheme offers is divided by the number of main scheme applications, to give an overall offer rate. This is then multiplied by the number of applications made by the group for which the average offer rate is being calculated (for example POLAR3 quintile 1), to give an average number of offers for that group. These average number of offers are then added together across all combinations of predicted grade and subject and divided by the number of main scheme applications from the group to give the average offer rate.

The average offer rate does not attempt to control for any other factors that may play a part in the decision to make an offer, such as the subject of the qualifications studied, their relevance to a course, or the grade in each subject; higher numbers of A levels being studied; the exact profile of grades predicted; personal statements; teacher references; interviews; or any other criteria (such as work experience or portfolios) that may be part of the admissions decision.

This statistic is only reported for 18 year olds.



### Contribution of group to the average offer rate

The way in which the average offer rate is defined means that the pattern of application and offers of a group (for example POLAR3 quintile 1) will always contribute, in part, to the average offer rate for that group. When this contribution is large, the average offer rate will mainly reflect the patterns for the group, meaning that the value of the average offer rate will be similar to the offer rate, the percentage point difference statistic will be small, and any real difference between the offer rate and what might be expected given the predicted grades and subject choices of the applicants will be difficult to detect.

Values of the contribution of group to the average offer rate range between 0 and 1. The closer the value is to 1 the greater the contribution a group makes to its own average offer rate.

This statistic is only reported for 18 year olds.

### Placed June deadline applicants

An applicant who has been placed for entry into higher education at the provider through a June deadline application.

### Placed June deadline applicants per 10,000 population

The number of UK domiciled 18 year old placed June deadline applicants at the provider divided by the number of UK 18 year olds in the population, multiplied by 10,000. This gives the number of 18 year olds, for every 10,000 in the population, that were placed at the provider through one of their June deadline applications. It is an alternative way of expressing the entry rate to a provider, but for placed June deadline applicants only. By referencing the underlying population this statistic shows how the number of placed June deadline applicants is changing in relation to the available pool of potential 18 year old applicants and so gives the chance that somebody from the group will be placed at a provider through a June deadline application.

This statistic is only reported for 18 year olds.

### June deadline applications

An application (or choice) to a course in higher education to the provider that is made by the June 30 deadline. Each applicant can make up to five choices this way. The number of June deadline applications does not include choices made through the following routes: Clearing, Extra, Adjustment and RPAs. Applications made to October deadline courses received after the October deadline are not included in these statistics.

### June deadline applicants

The number of applicants that made at least one application to the provider by the June 30 deadline.

### June deadline applicants per 10,000 population

The number of UK domiciled 18 year old June deadline applicants to the provider divided by the number of UK 18 year olds in the population, multiplied by 10,000. This gives the number of 18 year olds, for every 10,000 in the population, who applied by the June 30 deadline. It is equivalent to the application rate. By referencing the underlying population this statistic shows how the number of June deadline applicants is changing in relation to the available pool of potential 18 year old applicants and so gives the chance that somebody from the group will apply to a provider by the June 30 deadline.

This statistic is only reported for 18 year olds.

### Offers

An offer is defined as a provider's decision in response to an application to offer a place to an applicant, often subject to the applicant satisfying academic and/or other criteria, via a June deadline application (i.e. does not cover choices made through the following routes: Clearing, Extra, Adjustment and RPAs).

### Offer rate

The number of offers made divided by the number of June deadline applications. This gives the proportion of all June deadline applications to the provider that received an offer.

### Percentage point difference between offer rate and average offer rate

The offer rate minus the average offer rate.

The percentage point difference can be compared to the expected range of statistical variation resulting from the calculation of the average offer rate using the Average Offer Rate Lookup Table. Where the value of the percentage point difference lies outside of this range, the percentage point difference may be considered to represent a real difference between the offer rate and the average offer rate.

### Other definitions

#### Age

This analysis uses country-specific age definitions that align with the cut off points for school and college cohorts within the different administrations of the UK. For England and Wales, ages are defined on the 31 August, for Northern Ireland on the 1 July and for Scotland on the 28 February the following year. Defining ages in this way matches the assignment of children to school cohorts. For applicants outside of the UK a cohort cut off of 31 August has been used. Numbers for applicants aged 17 and under are included in the tables that report numbers for all age groups. Providers in Scotland typically receive a higher proportion of applicants aged 17 and under compared to providers elsewhere in the UK.

#### Provider

A higher education provider - a university or college.

#### UK domiciled

Declared area of permanent residence within England, Northern Ireland, Scotland and Wales. Applicants from the Channel Islands and Isle of Man are not included.