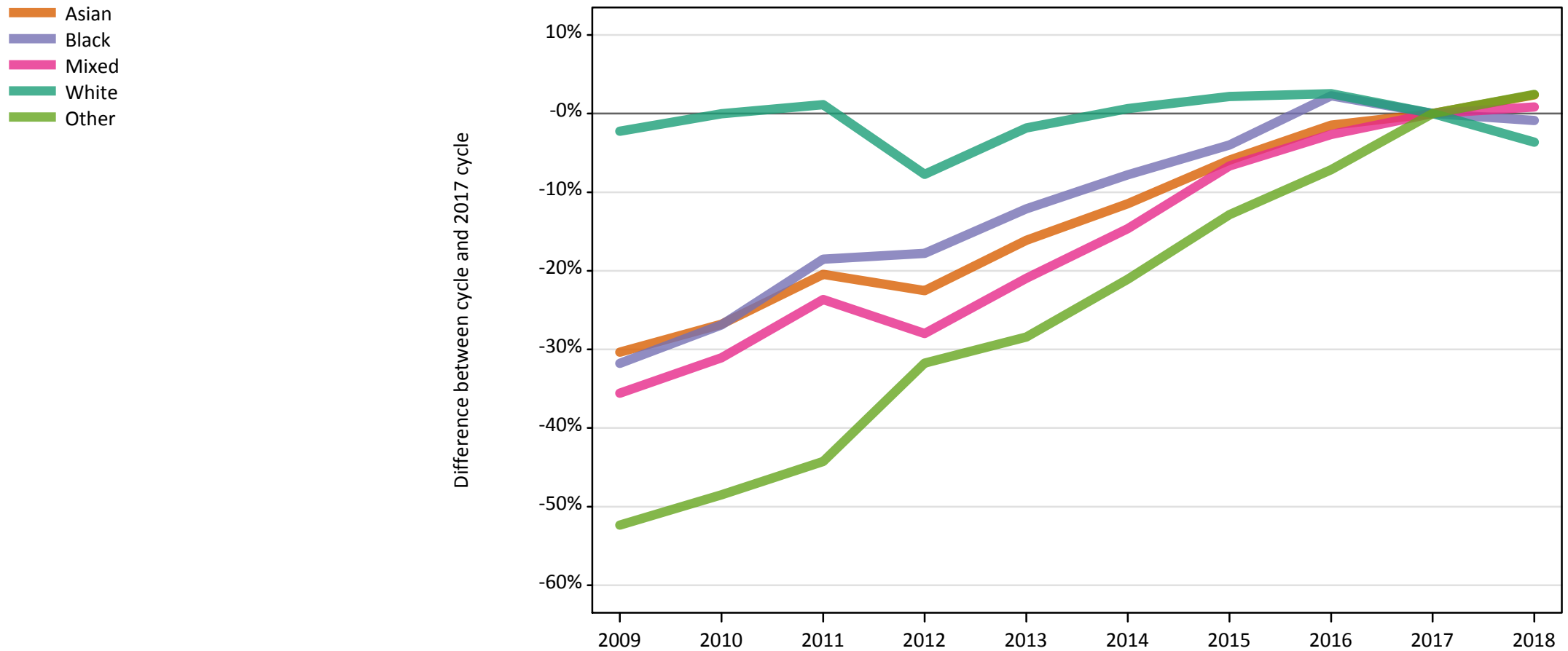


Daily Clearing Analysis: Ethnicity

Analysis at 00:05 on Friday 24 August 2018 (8 days after A level results day)

E.1 Placed applicants from UK by ethnic group: 8 days after A level results day

Placed applicants: change relative to 2017 cycle totals



Note: The percentage change is not plotted in the above chart for groups with fewer than 30 placed applicants in any one cycle.

E.2 Placed applicants from UK by ethnic group: 8 days after A level results day

Applicant Status	Ethnic group	2009	2010	2011	2012	2013	2014	2015	2016	2017	2018
Placed	Asian	34,110	35,850	38,960	37,940	41,060	43,340	46,070	48,240	48,960	50,130
	Black	19,960	21,380	23,830	24,050	25,700	26,970	28,080	29,910	29,240	28,990
	Mixed	11,950	12,790	14,170	13,370	14,670	15,840	17,320	18,060	18,560	18,710
	White	305,000	312,020	315,620	287,950	306,360	313,980	318,830	319,960	312,020	300,670
	Other	3,360	3,630	3,930	4,820	5,050	5,570	6,150	6,550	7,060	7,230

E.3 Placed applicants from UK by ethnic group: 8 days after A level results day

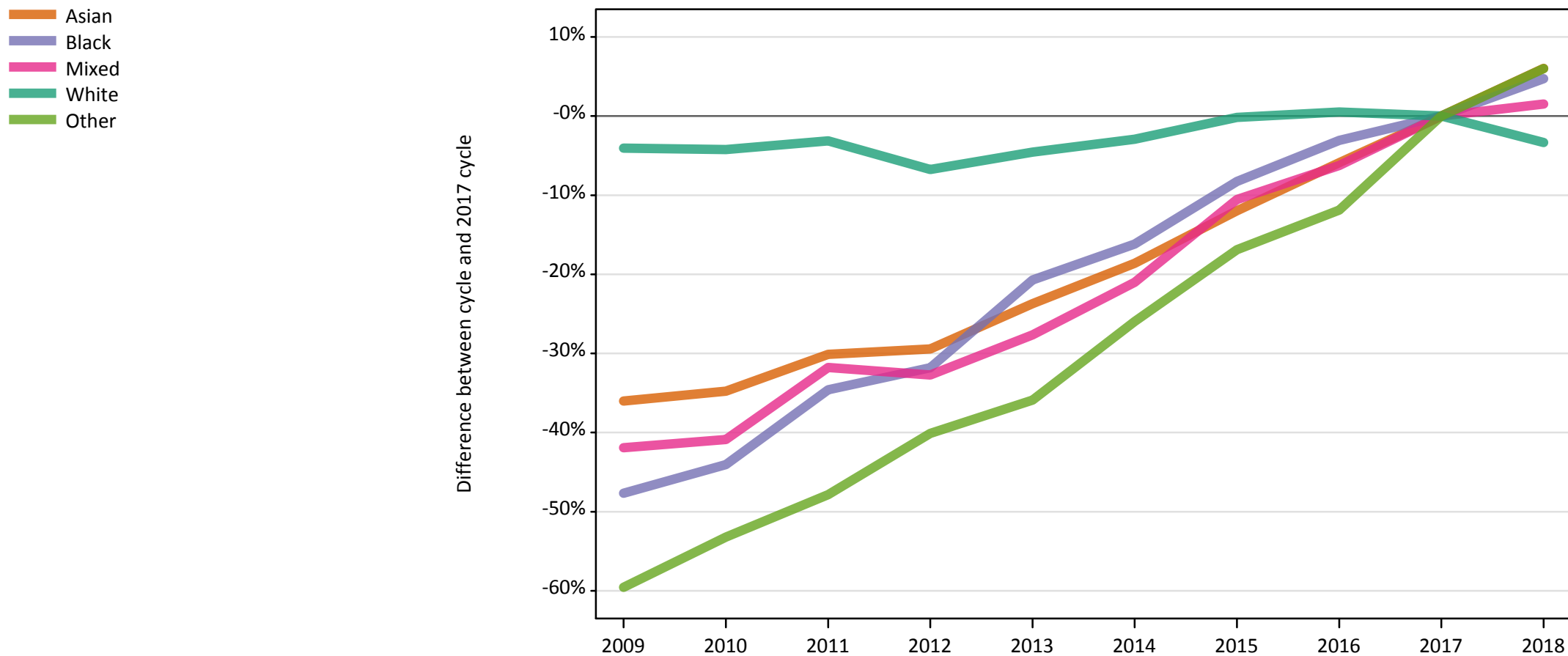
Placed applicants: change relative to 2017 cycle totals

Applicant Status	Ethnic group	2009	2010	2011	2012	2013	2014	2015	2016	2017	2018
Placed	Asian	-30%	-27%	-20%	-23%	-16%	-11%	-6%	-1%	0%	2%
	Black	-32%	-27%	-19%	-18%	-12%	-8%	-4%	2%	0%	-1%
	Mixed	-36%	-31%	-24%	-28%	-21%	-15%	-7%	-3%	0%	1%
	White	-2%	-0%	1%	-8%	-2%	1%	2%	3%	0%	-4%
	Other	-52%	-48%	-44%	-32%	-28%	-21%	-13%	-7%	0%	2%

Note: The percentage change is not recorded in the above table for groups with fewer than 10 placed applicants in that cycle or in the 2017 cycle.

E.4 Placed 18 year old applicants from UK by ethnic group: 8 days after A level results day

Placed 18 year old applicants: change relative to 2017 cycle totals



Note: The percentage change is not plotted in the above chart for groups with fewer than 30 placed applicants in any one cycle.

E.5 Placed 18 year old applicants from UK by ethnic group: 8 days after A level results day

Applicant Status	Ethnic group	2009	2010	2011	2012	2013	2014	2015	2016	2017	2018
Placed	Asian	18,260	18,620	19,950	20,140	21,780	23,230	25,130	26,860	28,540	30,260
	Black	6,250	6,680	7,810	8,150	9,470	10,010	10,960	11,580	11,950	12,510
	Mixed	6,040	6,150	7,100	7,000	7,530	8,220	9,310	9,760	10,410	10,570
	White	174,450	174,170	176,160	169,600	173,580	176,530	181,550	182,810	181,840	175,760
	Other	1,410	1,630	1,810	2,080	2,230	2,570	2,890	3,060	3,470	3,680

E.6 Placed 18 year old applicants from UK by ethnic group: 8 days after A level results day

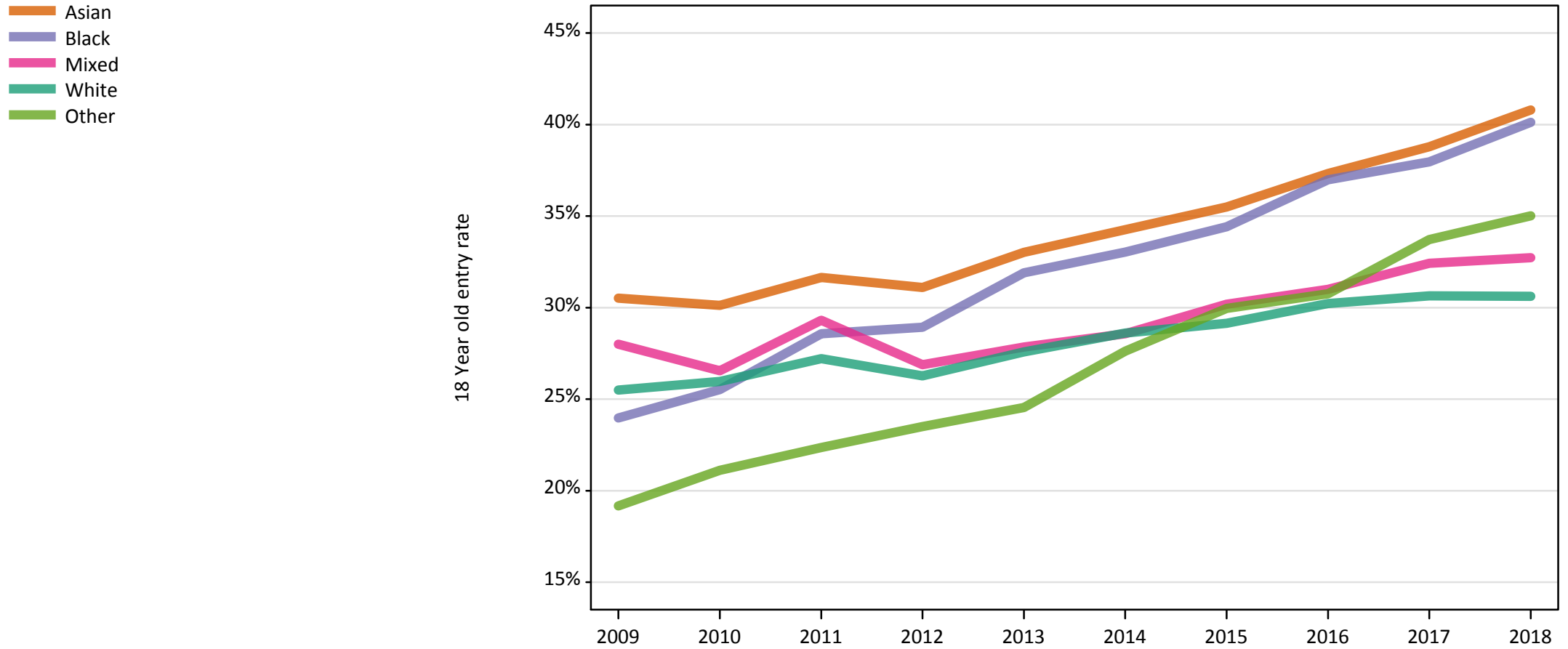
Placed 18 year old applicants: change relative to 2017 cycle totals

Applicant Status	Ethnic group	2009	2010	2011	2012	2013	2014	2015	2016	2017	2018
Placed	Asian	-36%	-35%	-30%	-29%	-24%	-19%	-12%	-6%	0%	6%
	Black	-48%	-44%	-35%	-32%	-21%	-16%	-8%	-3%	0%	5%
	Mixed	-42%	-41%	-32%	-33%	-28%	-21%	-11%	-6%	0%	2%
	White	-4%	-4%	-3%	-7%	-5%	-3%	-0%	1%	0%	-3%
	Other	-60%	-53%	-48%	-40%	-36%	-26%	-17%	-12%	0%	6%

Note: The percentage change is not recorded in the above table for groups with fewer than 10 placed applicants in that cycle or in the 2017 cycle.

E.7 Placed 18 year old applicants from UK by ethnic group: 8 days after A level results day

Placed 18 year old applicants: entry rate



E.8 Placed 18 year old applicants from UK by ethnic group: 8 days after A level results day

Placed 18 year old applicants: entry rate

Applicant Status	Ethnic group	2009	2010	2011	2012	2013	2014	2015	2016	2017	2018
Placed	Asian	30.5%	30.1%	31.7%	31.1%	33.0%	34.3%	35.5%	37.3%	38.8%	40.8%
	Black	24.0%	25.5%	28.6%	28.9%	31.9%	33.0%	34.4%	37.0%	38.0%	40.1%
	Mixed	28.0%	26.6%	29.3%	26.9%	27.8%	28.6%	30.2%	31.0%	32.4%	32.7%
	White	25.5%	26.0%	27.2%	26.3%	27.6%	28.6%	29.1%	30.2%	30.6%	30.6%
	Other	19.2%	21.1%	22.4%	23.5%	24.5%	27.6%	30.0%	30.8%	33.7%	35.0%

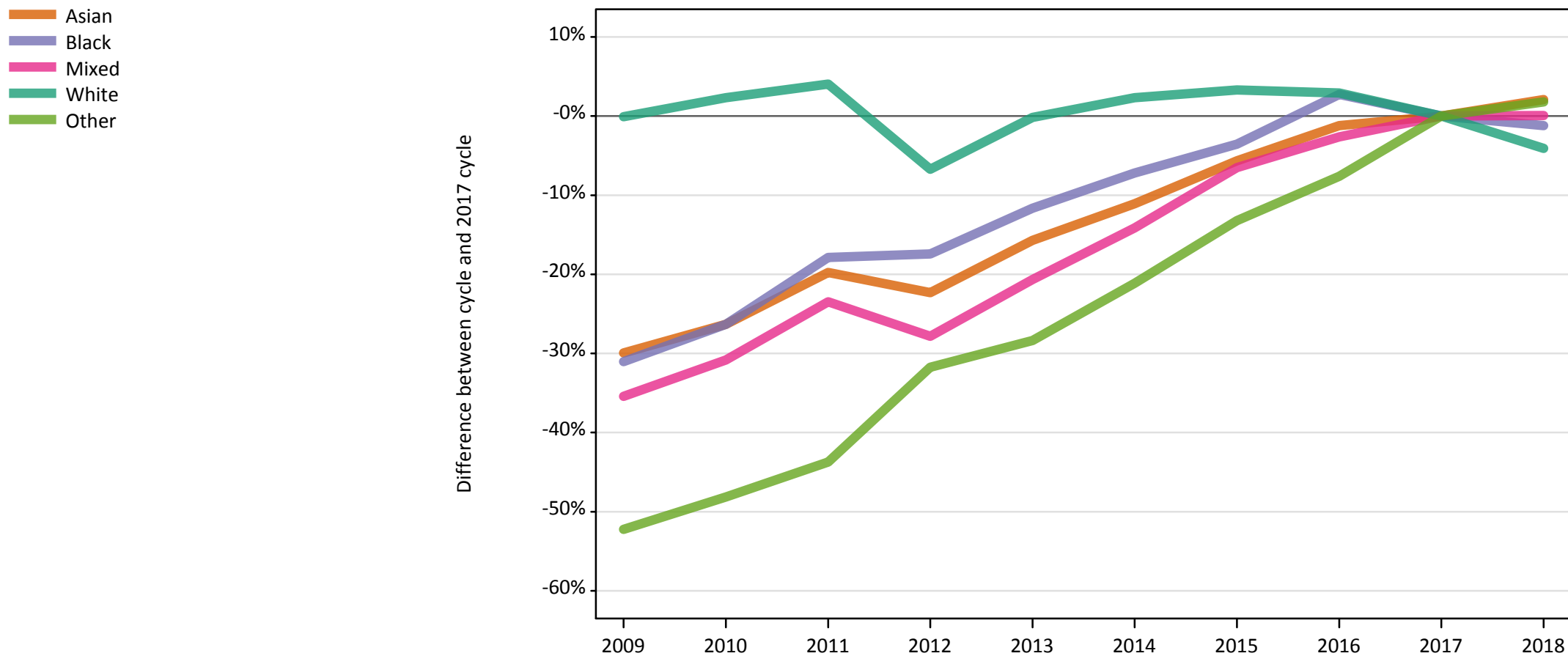
E.9 Placed 18 year old applicants from UK by ethnic group: 8 days after A level results day

Placed 18 year old applicants: entry rate (indexed to 100 = White ethnic group)

Applicant Status	Ethnic group	2009	2010	2011	2012	2013	2014	2015	2016	2017	2018
Placed	Asian	120	116	116	118	120	120	122	124	127	133
	Black	94	98	105	110	116	115	118	122	124	131
	Mixed	110	102	108	102	101	100	104	103	106	107
	White	100	100	100	100	100	100	100	100	100	100
	Other	75	81	82	89	89	97	103	102	110	114

E.10 Placed applicants from England by ethnic group: 8 days after A level results day

Placed applicants: change relative to 2017 cycle totals



Note: The percentage change is not plotted in the above chart for groups with fewer than 30 placed applicants in any one cycle.

E.11 Placed applicants from England by ethnic group: 8 days after A level results day

Applicant Status	Ethnic group	2009	2010	2011	2012	2013	2014	2015	2016	2017	2018
Placed	Asian	32,600	34,290	37,330	36,140	39,220	41,370	43,900	45,960	46,530	47,500
	Black	19,590	20,930	23,330	23,460	25,100	26,370	27,400	29,180	28,410	28,070
	Mixed	11,210	12,010	13,280	12,520	13,770	14,900	16,230	16,900	17,360	17,370
	White	250,860	256,890	261,230	234,140	250,650	256,870	259,310	258,350	251,040	240,810
	Other	3,210	3,490	3,790	4,590	4,820	5,310	5,840	6,220	6,730	6,850

E.12 Placed applicants from England by ethnic group: 8 days after A level results day

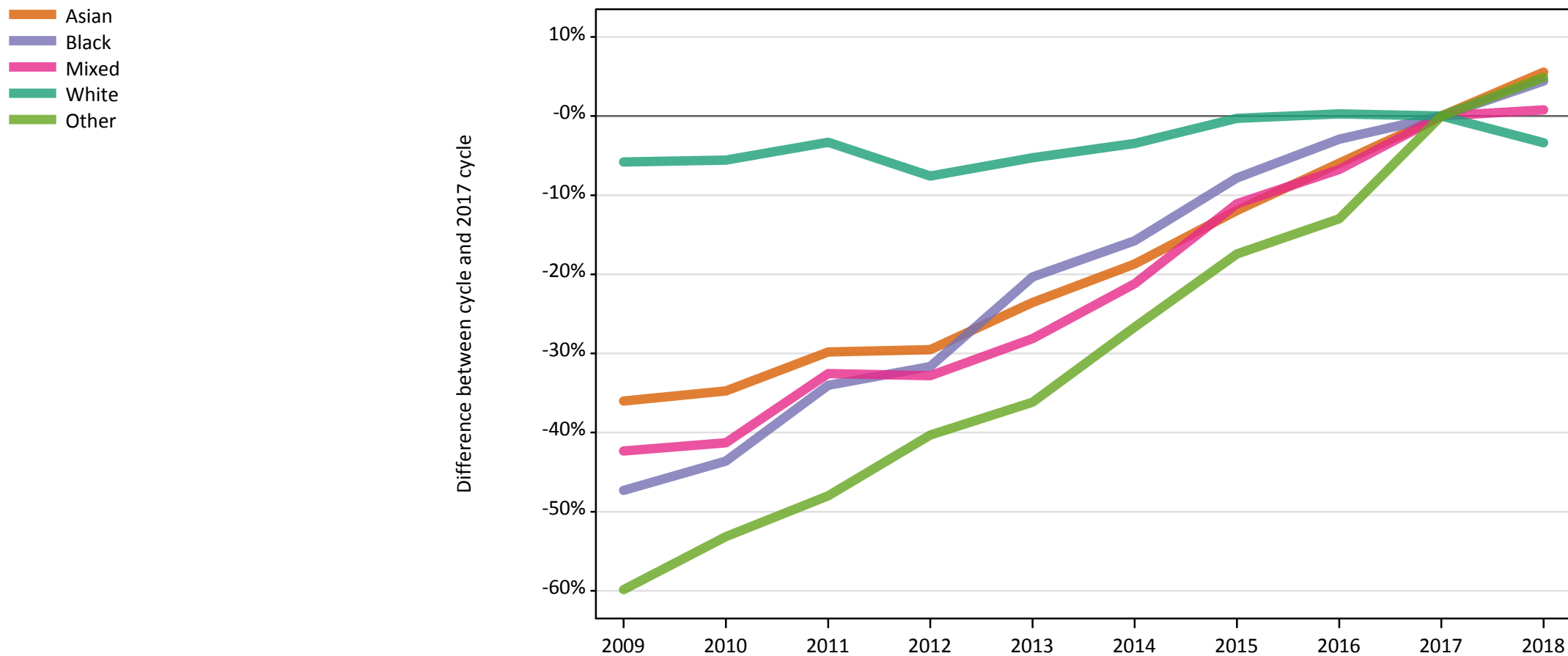
Placed applicants: change relative to 2017 cycle totals

Applicant Status	Ethnic group	2009	2010	2011	2012	2013	2014	2015	2016	2017	2018
Placed	Asian	-30%	-26%	-20%	-22%	-16%	-11%	-6%	-1%	0%	2%
	Black	-31%	-26%	-18%	-17%	-12%	-7%	-4%	3%	0%	-1%
	Mixed	-35%	-31%	-23%	-28%	-21%	-14%	-7%	-3%	0%	0%
	White	-0%	2%	4%	-7%	-0%	2%	3%	3%	0%	-4%
	Other	-52%	-48%	-44%	-32%	-28%	-21%	-13%	-8%	0%	2%

Note: The percentage change is not recorded in the above table for groups with fewer than 10 placed applicants in that cycle or in the 2017 cycle.

E.13 Placed 18 year old applicants from England by ethnic group: 8 days after A level results day

Placed 18 year old applicants: change relative to 2017 cycle totals



Note: The percentage change is not plotted in the above chart for groups with fewer than 30 placed applicants in any one cycle.

E.14 Placed 18 year old applicants from England by ethnic group: 8 days after A level results day

Applicant Status	Ethnic group	2009	2010	2011	2012	2013	2014	2015	2016	2017	2018
Placed	Asian	17,500	17,860	19,200	19,290	20,920	22,240	24,090	25,740	27,360	28,880
	Black	6,170	6,600	7,720	8,000	9,320	9,860	10,790	11,360	11,700	12,220
	Mixed	5,670	5,770	6,630	6,610	7,060	7,750	8,740	9,170	9,830	9,910
	White	142,210	142,570	145,940	139,520	143,020	145,750	150,530	151,380	150,950	145,870
	Other	1,350	1,570	1,740	2,000	2,140	2,460	2,770	2,920	3,350	3,510

E.15 Placed 18 year old applicants from England by ethnic group: 8 days after A level results day

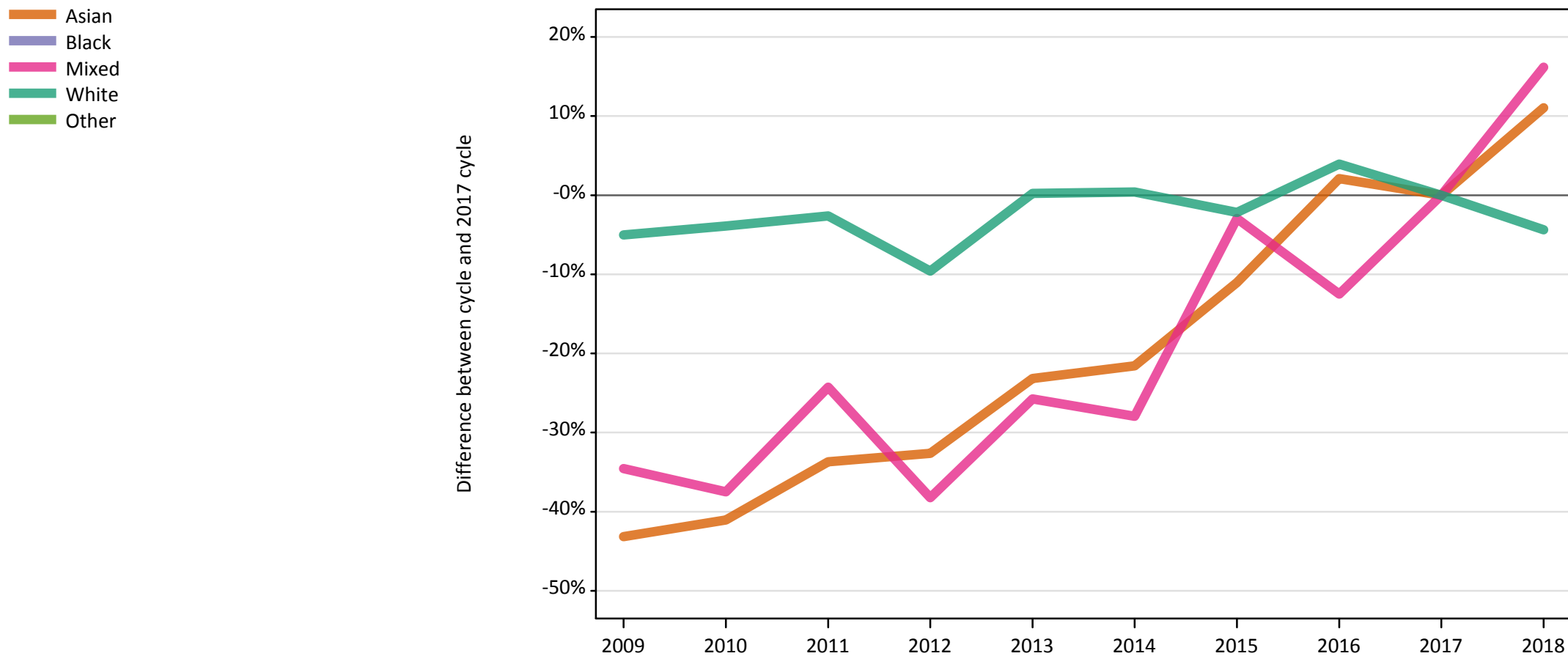
Placed 18 year old applicants: change relative to 2017 cycle totals

Applicant Status	Ethnic group	2009	2010	2011	2012	2013	2014	2015	2016	2017	2018
Placed	Asian	-36%	-35%	-30%	-30%	-24%	-19%	-12%	-6%	0%	6%
	Black	-47%	-44%	-34%	-32%	-20%	-16%	-8%	-3%	0%	4%
	Mixed	-42%	-41%	-33%	-33%	-28%	-21%	-11%	-7%	0%	1%
	White	-6%	-6%	-3%	-8%	-5%	-3%	-0%	0%	0%	-3%
	Other	-60%	-53%	-48%	-40%	-36%	-27%	-17%	-13%	0%	5%

Note: The percentage change is not recorded in the above table for groups with fewer than 10 placed applicants in that cycle or in the 2017 cycle.

E.16 Placed applicants from Northern Ireland by ethnic group: 8 days after A level results day

Placed applicants: change relative to 2017 cycle totals



Note: The percentage change is not plotted in the above chart for groups with fewer than 30 placed applicants in any one cycle.

E.17 Placed applicants from Northern Ireland by ethnic group: 8 days after A level results day

Applicant Status	Ethnic group	2009	2010	2011	2012	2013	2014	2015	2016	2017	2018
Placed	Asian	110	110	130	130	150	150	170	190	190	210
	Black	10	20	20	20	30	40	40	50	50	50
	Mixed	90	90	100	80	100	100	130	120	140	160
	White	12,700	12,850	13,020	12,080	13,400	13,420	13,080	13,890	13,370	12,780
	Other	10	20	10	10	10	20	10	20	20	20

E.18 Placed applicants from Northern Ireland by ethnic group: 8 days after A level results day

Placed applicants: change relative to 2017 cycle totals

Applicant Status	Ethnic group	2009	2010	2011	2012	2013	2014	2015	2016	2017	2018
Placed	Asian	-43%	-41%	-34%	-33%	-23%	-22%	-11%	2%	0%	11%
	Black	-76%	-67%	-69%	-57%	-43%	-20%	-33%	0%	0%	0%
	Mixed	-35%	-38%	-24%	-38%	-26%	-28%	-3%	-13%	0%	16%
	White	-5%	-4%	-3%	-10%	0%	0%	-2%	4%	0%	-4%
	Other	-67%	-29%	-54%	-42%	-54%	-17%	-50%	-13%	0%	-8%

Note: The percentage change is not recorded in the above table for groups with fewer than 10 placed applicants in that cycle or in the 2017 cycle.

E.19 Placed 18 year old applicants from Northern Ireland by ethnic group: 8 days after A level results day

Placed 18 year old applicants: change relative to 2017 cycle totals



Note: The percentage change is not plotted in the above chart for groups with fewer than 30 placed applicants in any one cycle.

E.20 Placed 18 year old applicants from Northern Ireland by ethnic group: 8 days after A level results day

Applicant Status	Ethnic group	2009	2010	2011	2012	2013	2014	2015	2016	2017	2018
Placed	Asian	70	60	70	70	80	80	90	100	110	130
	Black	10	0	10	10	20	10	10	20	20	10
	Mixed	60	50	70	50	60	60	80	70	80	100
	White	8,930	8,530	8,310	7,860	8,380	8,170	8,030	8,250	8,090	7,630
	Other	0	10	10	10	0	10	0	10	10	10

E.21 Placed 18 year old applicants from Northern Ireland by ethnic group: 8 days after A level results day

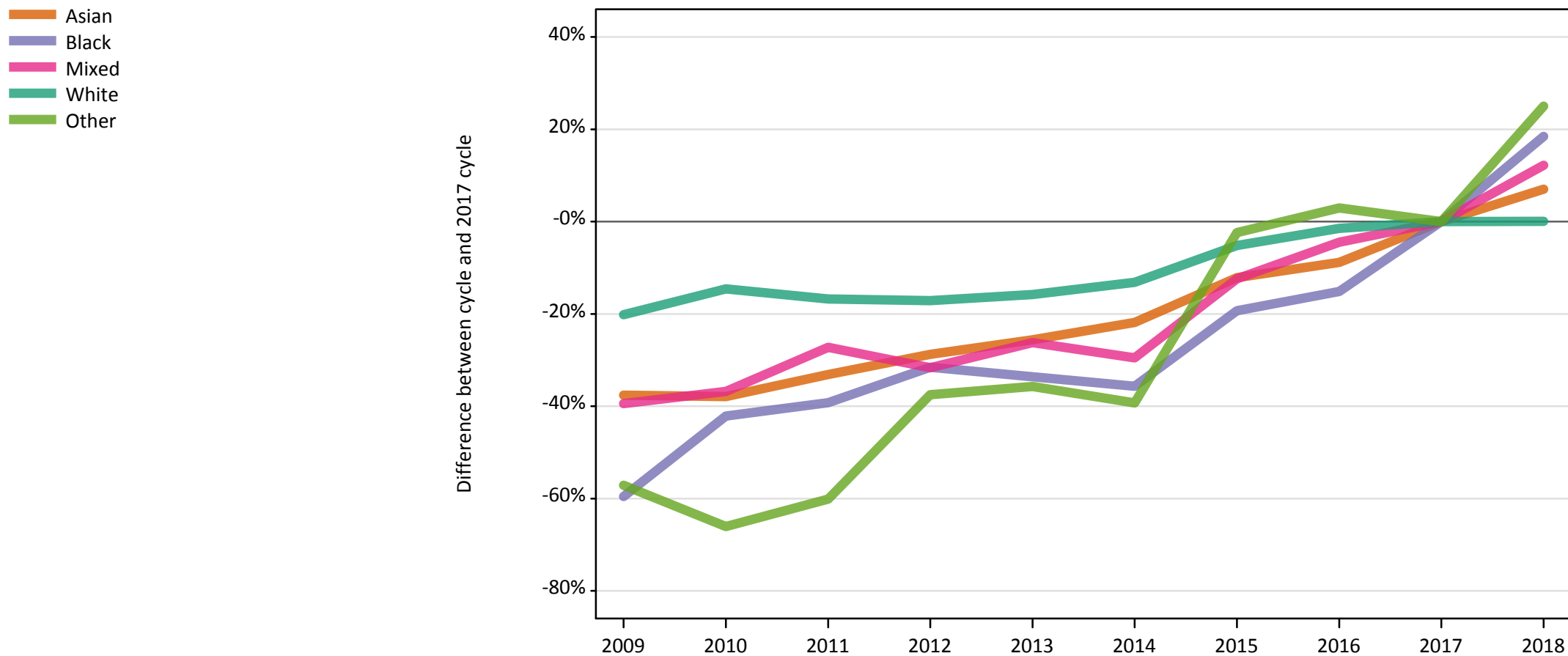
Placed 18 year old applicants: change relative to 2017 cycle totals

Applicant Status	Ethnic group	2009	2010	2011	2012	2013	2014	2015	2016	2017	2018
Placed	Asian	-42%	-44%	-41%	-42%	-32%	-29%	-19%	-9%	0%	12%
	Black	-68%		-58%	-63%	-16%	-32%	-37%	-5%	0%	-32%
	Mixed	-26%	-38%	-17%	-42%	-24%	-26%	3%	-6%	0%	22%
	White	10%	5%	3%	-3%	4%	1%	-1%	2%	0%	-6%
	Other		-30%	-50%	-50%		10%		0%	0%	30%

Note: The percentage change is not recorded in the above table for groups with fewer than 10 placed applicants in that cycle or in the 2017 cycle.

E.22 Placed applicants from Scotland by ethnic group: 8 days after A level results day

Placed applicants: change relative to 2017 cycle totals



Note: The percentage change is not plotted in the above chart for groups with fewer than 30 placed applicants in any one cycle.

E.23 Placed applicants from Scotland by ethnic group: 8 days after A level results day

Applicant Status	Ethnic group	2009	2010	2011	2012	2013	2014	2015	2016	2017	2018
Placed	Asian	930	930	1,000	1,060	1,110	1,170	1,310	1,360	1,490	1,600
	Black	200	280	290	330	320	310	390	410	480	570
	Mixed	370	380	440	410	450	430	530	580	610	680
	White	24,640	26,360	25,690	25,570	25,980	26,790	29,260	30,400	30,860	30,880
	Other	70	60	70	110	110	100	160	170	170	210

E.24 Placed applicants from Scotland by ethnic group: 8 days after A level results day

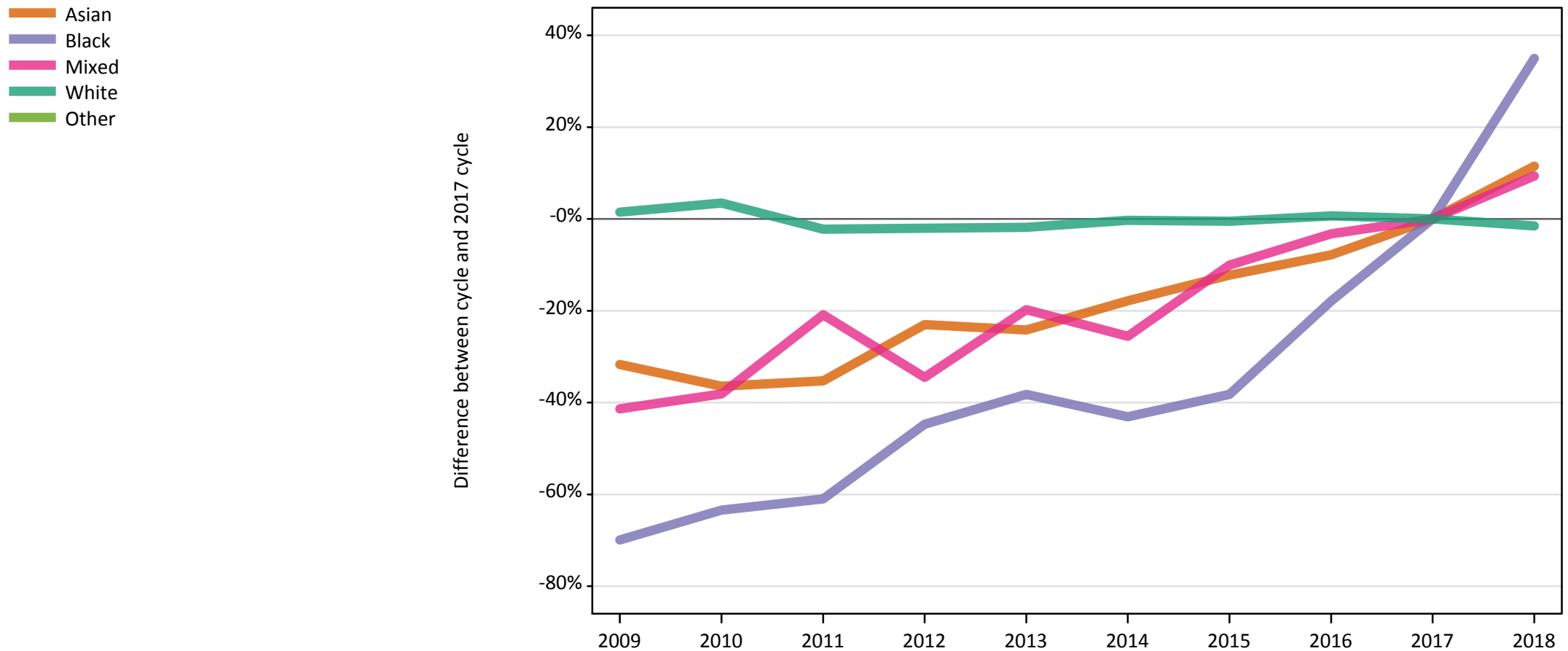
Placed applicants: change relative to 2017 cycle totals

Applicant Status	Ethnic group	2009	2010	2011	2012	2013	2014	2015	2016	2017	2018
Placed	Asian	-38%	-38%	-33%	-29%	-26%	-22%	-12%	-9%	0%	7%
	Black	-60%	-42%	-39%	-32%	-34%	-36%	-19%	-15%	0%	18%
	Mixed	-39%	-37%	-27%	-32%	-26%	-30%	-12%	-4%	0%	12%
	White	-20%	-15%	-17%	-17%	-16%	-13%	-5%	-1%	0%	0%
	Other	-57%	-66%	-60%	-38%	-36%	-39%	-2%	3%	0%	25%

Note: The percentage change is not recorded in the above table for groups with fewer than 10 placed applicants in that cycle or in the 2017 cycle.

E.25 Placed 18 year old applicants from Scotland by ethnic group: 8 days after A level results day

Placed 18 year old applicants: change relative to 2017 cycle totals



Note: The percentage change is not plotted in the above chart for groups with fewer than 30 placed applicants in any one cycle.

E.26 Placed 18 year old applicants from Scotland by ethnic group: 8 days after A level results day

Applicant Status	Ethnic group	2009	2010	2011	2012	2013	2014	2015	2016	2017	2018
Placed	Asian	460	430	440	520	510	560	600	630	680	760
	Black	40	50	50	70	80	70	80	100	120	170
	Mixed	160	170	220	180	220	210	250	270	280	300
	White	13,630	13,890	13,130	13,160	13,180	13,390	13,360	13,510	13,430	13,220
	Other	30	20	30	40	40	40	60	60	60	80

E.27 Placed 18 year old applicants from Scotland by ethnic group: 8 days after A level results day

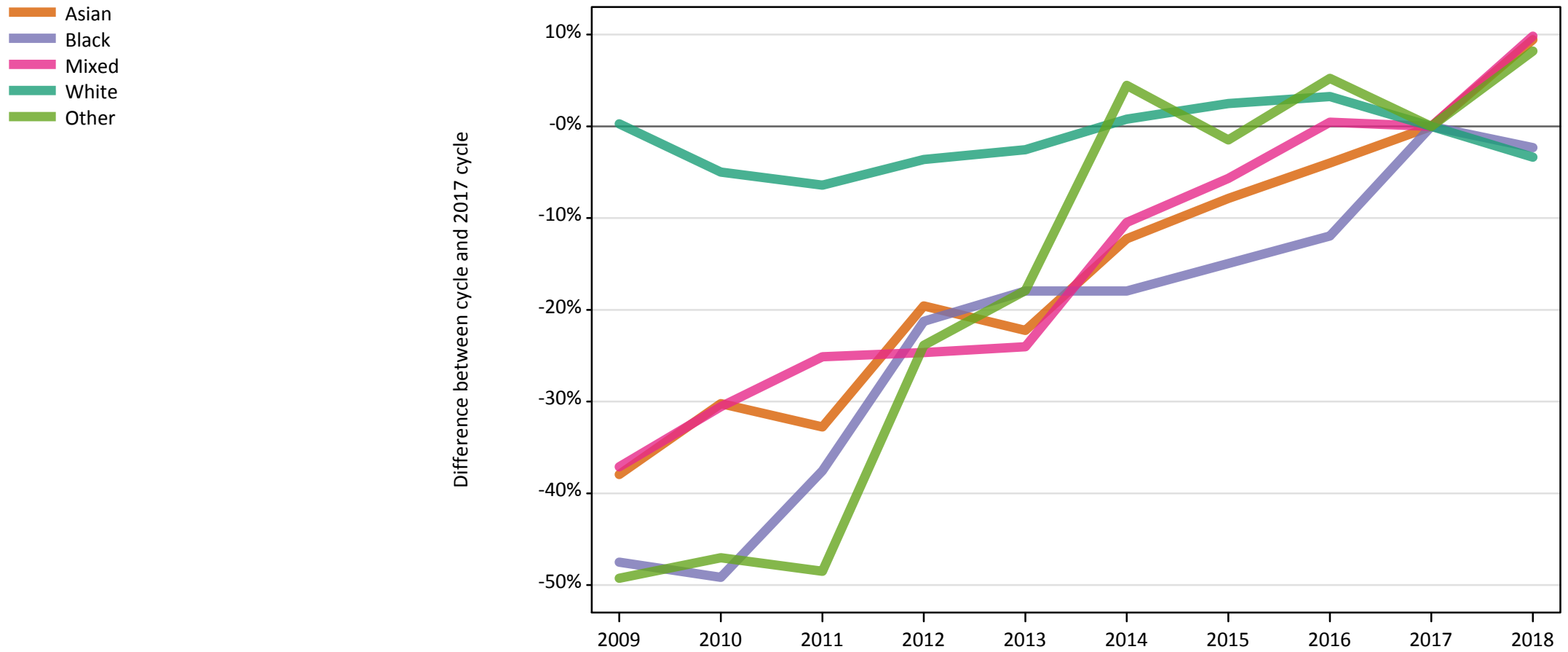
Placed 18 year old applicants: change relative to 2017 cycle totals

Applicant Status	Ethnic group	2009	2010	2011	2012	2013	2014	2015	2016	2017	2018
Placed	Asian	-32%	-36%	-35%	-23%	-24%	-18%	-12%	-8%	0%	12%
	Black	-70%	-63%	-61%	-45%	-38%	-43%	-38%	-18%	0%	35%
	Mixed	-41%	-38%	-21%	-35%	-20%	-26%	-10%	-3%	0%	9%
	White	1%	3%	-2%	-2%	-2%	-0%	-0%	1%	0%	-2%
	Other	-56%	-74%	-48%	-44%	-32%	-42%	-2%	2%	0%	24%

Note: The percentage change is not recorded in the above table for groups with fewer than 10 placed applicants in that cycle or in the 2017 cycle.

E.28 Placed applicants from Wales by ethnic group: 8 days after A level results day

Placed applicants: change relative to 2017 cycle totals



Note: The percentage change is not plotted in the above chart for groups with fewer than 30 placed applicants in any one cycle.

E.29 Placed applicants from Wales by ethnic group: 8 days after A level results day

Applicant Status	Ethnic group	2009	2010	2011	2012	2013	2014	2015	2016	2017	2018
Placed	Asian	470	520	510	600	580	660	690	720	750	820
	Black	160	150	190	240	250	250	260	270	300	290
	Mixed	290	320	340	350	350	410	430	460	460	500
	White	16,810	15,930	15,690	16,160	16,340	16,890	17,180	17,310	16,760	16,200
	Other	70	70	70	100	110	140	130	140	130	150

E.30 Placed applicants from Wales by ethnic group: 8 days after A level results day

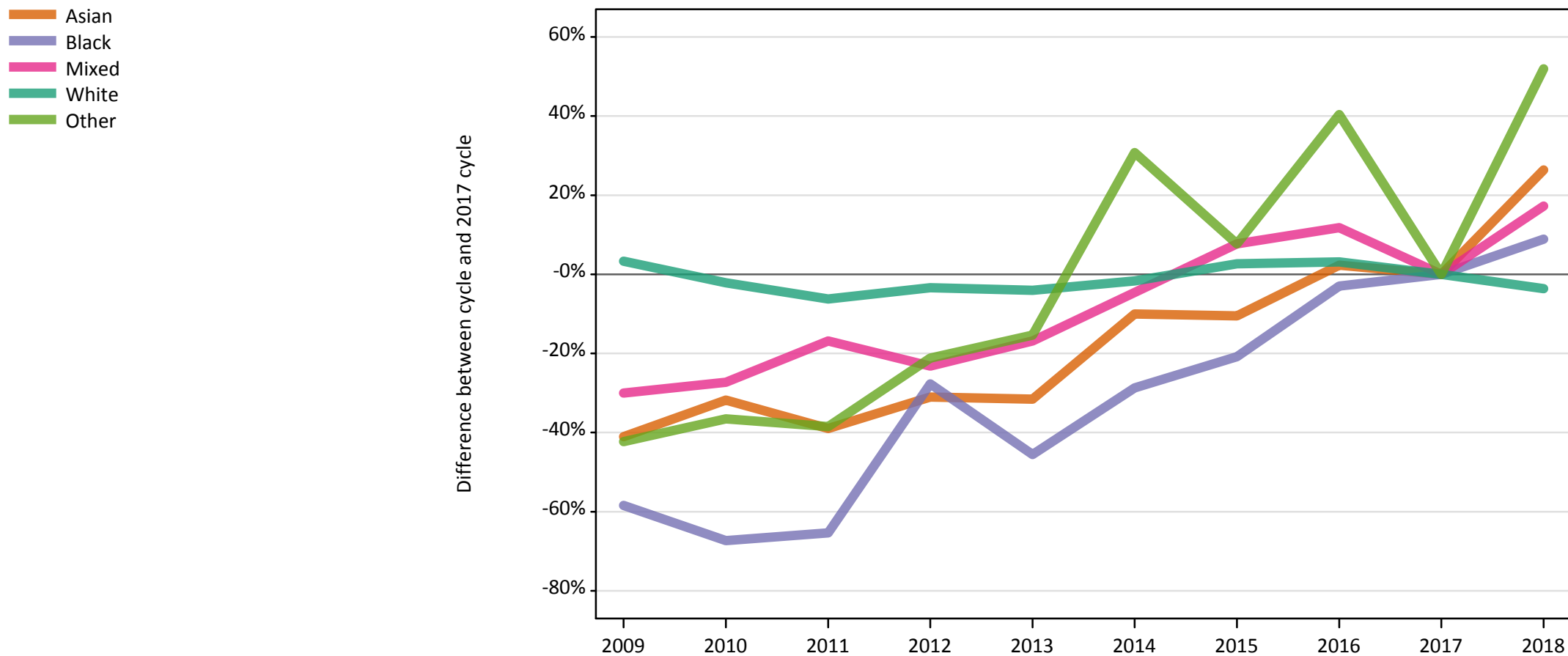
Placed applicants: change relative to 2017 cycle totals

Applicant Status	Ethnic group	2009	2010	2011	2012	2013	2014	2015	2016	2017	2018
Placed	Asian	-38%	-30%	-33%	-20%	-22%	-12%	-8%	-4%	0%	9%
	Black	-48%	-49%	-38%	-21%	-18%	-18%	-15%	-12%	0%	-2%
	Mixed	-37%	-31%	-25%	-25%	-24%	-10%	-6%	0%	0%	10%
	White	0%	-5%	-6%	-4%	-3%	1%	2%	3%	0%	-3%
	Other	-49%	-47%	-49%	-24%	-18%	4%	-1%	5%	0%	8%

Note: The percentage change is not recorded in the above table for groups with fewer than 10 placed applicants in that cycle or in the 2017 cycle.

E.31 Placed 18 year old applicants from Wales by ethnic group: 8 days after A level results day

Placed 18 year old applicants: change relative to 2017 cycle totals



Note: The percentage change is not plotted in the above chart for groups with fewer than 30 placed applicants in any one cycle.

E.32 Placed 18 year old applicants from Wales by ethnic group: 8 days after A level results day

Applicant Status	Ethnic group	2009	2010	2011	2012	2013	2014	2015	2016	2017	2018
Placed	Asian	230	270	240	270	270	350	350	400	390	490
	Black	40	30	40	70	60	70	80	100	100	110
	Mixed	150	160	180	170	180	210	240	250	220	260
	White	9,690	9,180	8,790	9,060	9,000	9,220	9,630	9,670	9,380	9,040
	Other	30	30	30	40	40	70	60	70	50	80

E.33 Placed 18 year old applicants from Wales by ethnic group: 8 days after A level results day

Placed 18 year old applicants: change relative to 2017 cycle totals

Applicant Status	Ethnic group	2009	2010	2011	2012	2013	2014	2015	2016	2017	2018
Placed	Asian	-41%	-32%	-39%	-31%	-32%	-10%	-11%	2%	0%	26%
	Black	-58%	-67%	-65%	-28%	-46%	-29%	-21%	-3%	0%	9%
	Mixed	-30%	-27%	-17%	-23%	-17%	-5%	8%	12%	0%	17%
	White	3%	-2%	-6%	-3%	-4%	-2%	3%	3%	0%	-4%
	Other	-42%	-37%	-38%	-21%	-15%	31%	8%	40%	0%	52%

Note: The percentage change is not recorded in the above table for groups with fewer than 10 placed applicants in that cycle or in the 2017 cycle.