

Confidential analysis for Registered centres 99999 Example Sixth Form College

Cycles: 2020 — 2024

Cycle Reference Point: End of cycle

Applicant coverage: This report contains data on all applicants from the following named registered centres.

99991 Example Competitor 1
99992 Example Competitor 2
99993 Example Competitor 3
99994 Example Competitor 4
99995 Example Competitor 5

Contents:

1. Overview
 2. Deadline applied by
 3. Choices, decisions, offers and replies
 4. Acceptance routes
 5. Decline my place
 6. Clearing Plus
 7. Acceptances and offers by provider tariff group
 8. Acceptances and offers by provider mission group
 9. Acceptances and offers by gender
 10. Acceptances and offers by ethnic group
 11. Acceptances and offers by qualification
 12. Acceptances and offers by HE provider
 13. Acceptances and offers by CAH1 subject group
 14. Acceptances and offers by CAH3 subject group
- Technical notes and definitions

The Competitor Report contains aggregated data for the registered centres above. To see your own data please use your copy of the Progression Report.

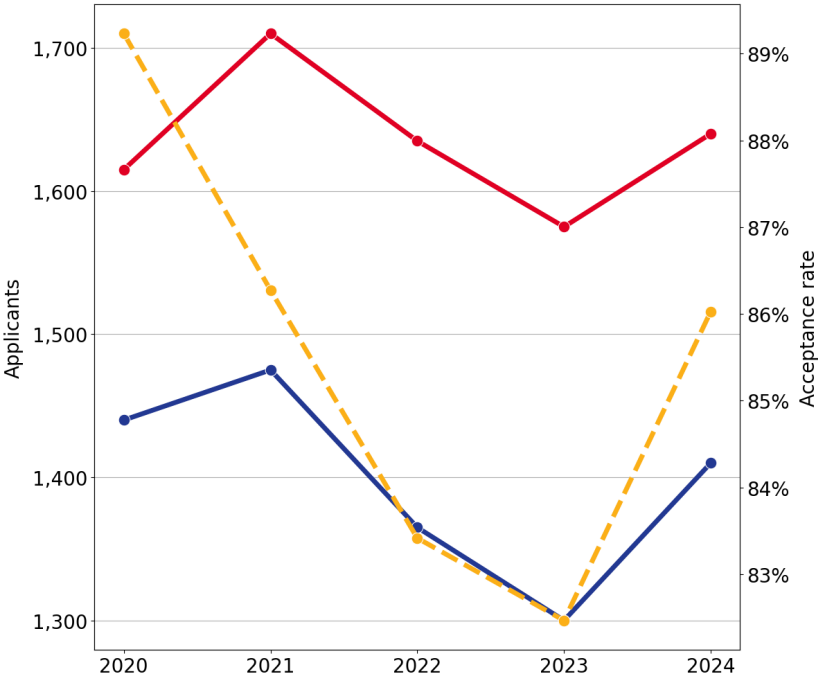
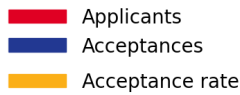
Note: All numbers are rounded to the nearest 5.

Note: To avoid the disclosure of information about any individual the following measures are taken:

- Percentages are reported as 0% if the numerator is less than 5.
- Percentages are reported as 100% if the numerator is within 5 of the denominator.

1. Overview

1.1 Applicants and acceptances



1.2 Overview stats

	2020	2021	2022	2023	2024
Applicants	1,615	1,710	1,635	1,575	1,640
Acceptances	1,440	1,475	1,365	1,300	1,410
Not placed	165	205	240	250	205
Withdrawn	10	30	30	25	25
Acceptance rate	89.2%	86.3%	83.4%	82.5%	86.0%

1.3 Applicants by application type

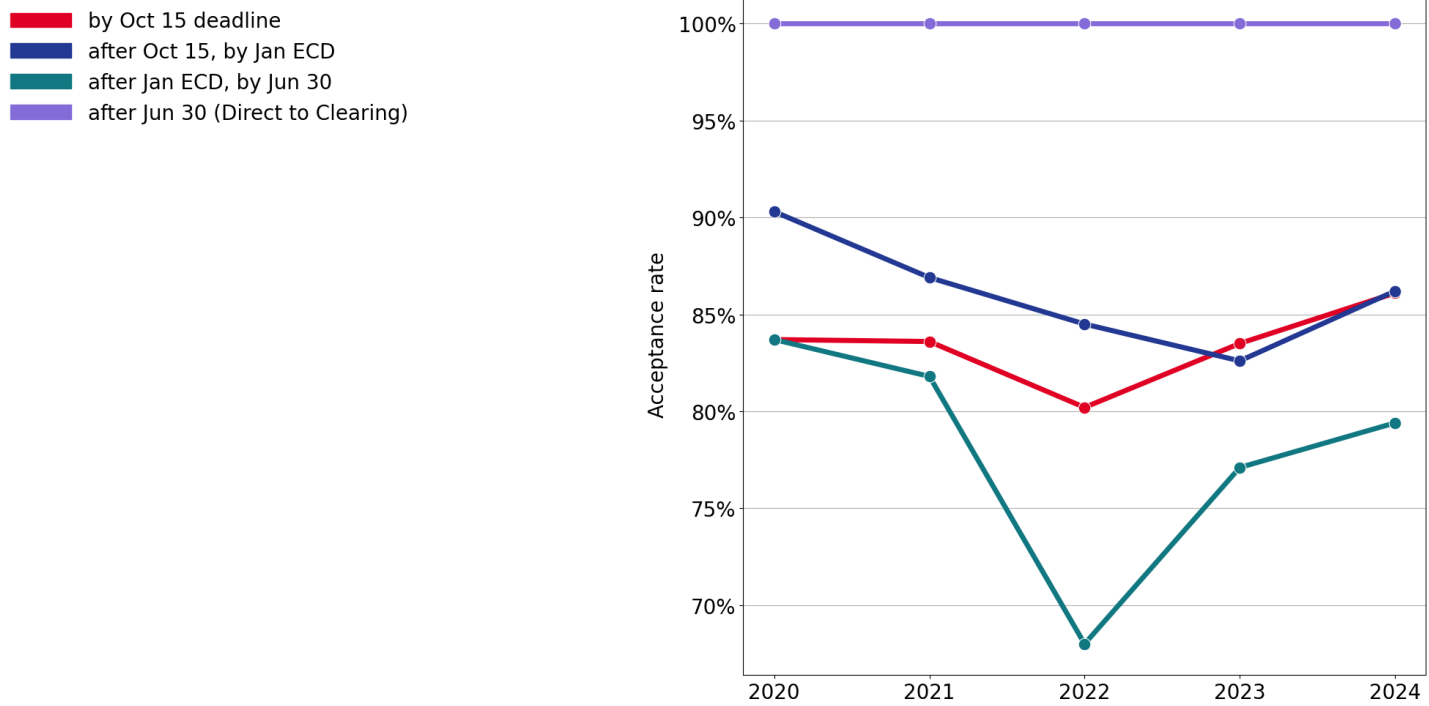
	2020	2021	2022	2023	2024
Main scheme applicants	1,600	1,705	1,625	1,565	1,620
Direct to Clearing applicants	15	10	5	5	15

1.4 Acceptances by entry year

	2020	2021	2022	2023	2024
Entering same cycle	1,340	1,360	1,310	1,200	1,310
Deferred entry	100	115	55	100	100
Deferral rate	6.9%	7.9%	4.0%	7.6%	7.2%

2. Deadline applied by

2.1 Acceptance rate by deadline applied by



2.2 Applicants by deadline applied by

Deadline	2020	2021	2022	2023	2024
by Oct 15 deadline	165	185	205	200	200
after Oct 15, by Jan ECD	1,345	1,465	1,370	1,320	1,385
after Jan ECD, by Jun 30	85	55	50	50	35
after Jun 30 (Direct to Clearing)	15	10	5	5	15

2.3 Proportion of applicants by deadline applied by

Deadline	2020	2021	2022	2023	2024
by Oct 15 deadline	10.3%	10.7%	12.7%	12.7%	12.3%
after Oct 15, by Jan ECD	83.4%	85.6%	83.8%	83.8%	84.6%
after Jan ECD, by Jun 30	5.3%	3.2%	3.1%	3.0%	2.1%
after Jun 30 (Direct to Clearing)	1.1%	0.5%	0.4%	0.4%	1.0%

2.4 Number of applicants offered by deadline applied by
Applicants who received at least one offer to a main scheme choice

Deadline	2020	2021	2022	2023	2024
by Oct 15 deadline	165	175	190	190	195
after Oct 15, by Jan ECD	1,315	1,440	1,345	1,305	1,370
after Jan ECD, by Jun 30	80	45	40	40	35

2.5 Offer rate (applicant level) by deadline applied by
Applicants who received at least one offer to a main scheme choice

Deadline	2020	2021	2022	2023	2024
by Oct 15 deadline	100.0%	94.5%	92.3%	94.5%	96.0%
after Oct 15, by Jan ECD	97.8%	98.4%	98.0%	98.9%	99.0%
after Jan ECD, by Jun 30	93.0%	83.6%	84.0%	83.3%	100.0%

2.6 Number of acceptances by deadline applied by

Deadline	2020	2021	2022	2023	2024
by Oct 15 deadline	140	155	165	165	175
after Oct 15, by Jan ECD	1,215	1,275	1,155	1,090	1,195
after Jan ECD, by Jun 30	70	45	35	35	25
after Jun 30 (Direct to Clearing)	15	5	5	5	15

2.7 Acceptance rate by deadline applied by

Deadline	2020	2021	2022	2023	2024
by Oct 15 deadline	83.7%	83.6%	80.2%	83.5%	86.1%
after Oct 15, by Jan ECD	90.3%	86.9%	84.5%	82.6%	86.2%
after Jan ECD, by Jun 30	83.7%	81.8%	68.0%	77.1%	79.4%
after Jun 30 (Direct to Clearing)	100.0%	100.0%	100.0%	100.0%	100.0%

3. Choices, decisions, offers and replies

Main scheme choices only (submitted by 30 June deadline). Decisions and replies taken as at 30 June.

3.1 Applicants by number of choices

Number of choices	2020	2021	2022	2023	2024
1	90	75	45	45	35
2	65	40	30	25	30
3	70	85	50	45	45
4	125	120	65	65	85
5	1,250	1,380	1,435	1,390	1,430
All	1,600	1,705	1,625	1,565	1,620

3.2 Provider decisions to choices

Provider decision	2020	2021	2022	2023	2024
Offer - Conditional	4,745	5,550	4,960	5,015	5,445
Offer - Unconditional	825	485	575	450	450
Reject	1,050	1,305	1,660	1,485	1,380
Other	550	460	500	485	435
All	7,175	7,800	7,695	7,430	7,710

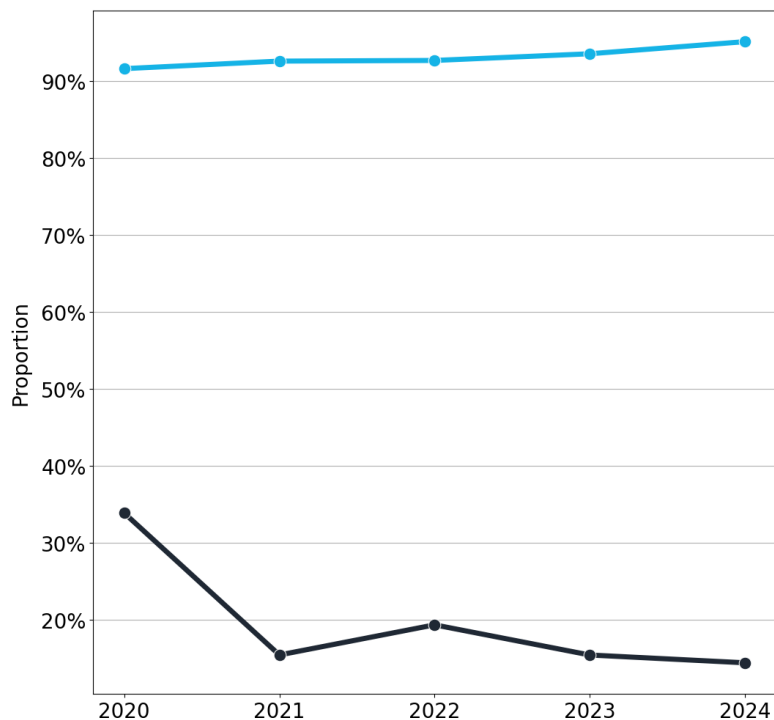
3.3 Proportion of choices by decisions

Provider decision	2020	2021	2022	2023	2024
Offer - Conditional	66.2%	71.1%	64.5%	67.5%	70.6%
Offer - Unconditional	11.5%	6.2%	7.4%	6.1%	5.8%
Reject	14.7%	16.7%	21.6%	20.0%	17.9%
Other	7.6%	5.9%	6.5%	6.5%	5.7%

3.4 Proportion of main scheme applicants with a conditional or unconditional offer

At least one conditional or unconditional offer

■ at least one conditional offer
■ at least one unconditional offer



3.5 Applicants with an offer

At least one offer

	2020	2021	2022	2023	2024
Main scheme applicants	1,600	1,705	1,625	1,565	1,620
Applicants with an offer	1,560	1,660	1,575	1,535	1,600
- Applicants with a conditional offer	1,465	1,575	1,510	1,465	1,545
- Applicants with an unconditional offer	540	260	315	240	235
Proportion of applicants with an offer	97.7%	97.5%	96.9%	97.8%	98.6%
- Proportion of applicants with a conditional offer	91.6%	92.6%	92.7%	93.6%	95.1%
- Proportion of applicants with an unconditional offer	33.8%	15.4%	19.3%	15.4%	14.4%

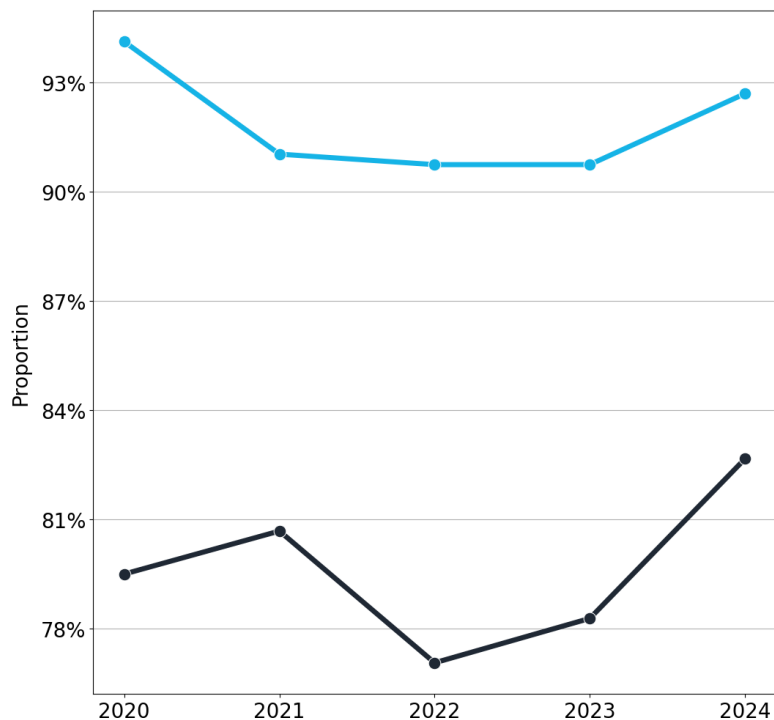
3.6 Applicants by number of offers received

Regardless of number of choices

Number of offers (conditional or unconditional)	2020	2021	2022	2023	2024
0	35	45	50	35	25
1	190	170	150	155	130
2	200	185	235	195	180
3	245	295	310	295	300
4	390	440	430	410	455
5	540	570	455	480	535

3.7 Proportion of main scheme applicants with a firm or insurance choice

- Set a firm choice (at least one offer)
- Set an insurance choice (at least two offers)



3.8 Applicants with a firm or insurance choice

	2020	2021	2022	2023	2024
Applicants with at least one offer	1,560	1,660	1,575	1,535	1,600
Applicants with a firm choice	1,470	1,510	1,430	1,390	1,480
Proportion of applicants with a firm choice	94.1%	91.0%	90.7%	90.7%	92.7%
Applicants with at least two offers	1,370	1,490	1,425	1,375	1,470
Applicants with an insurance choice	1,090	1,205	1,100	1,080	1,215
Proportion of applicants with an insurance choice	79.5%	80.7%	77.1%	78.3%	82.7%

3.9 Applicant replies to offer

Applicant Reply	2020	2021	2022	2023	2024
Firm	1,470	1,510	1,430	1,390	1,480
Insurance	1,090	1,205	1,100	1,080	1,215
Decline	2,985	3,250	2,955	2,970	3,165
Other	30	70	50	30	30
All	5,575	6,035	5,535	5,465	5,895

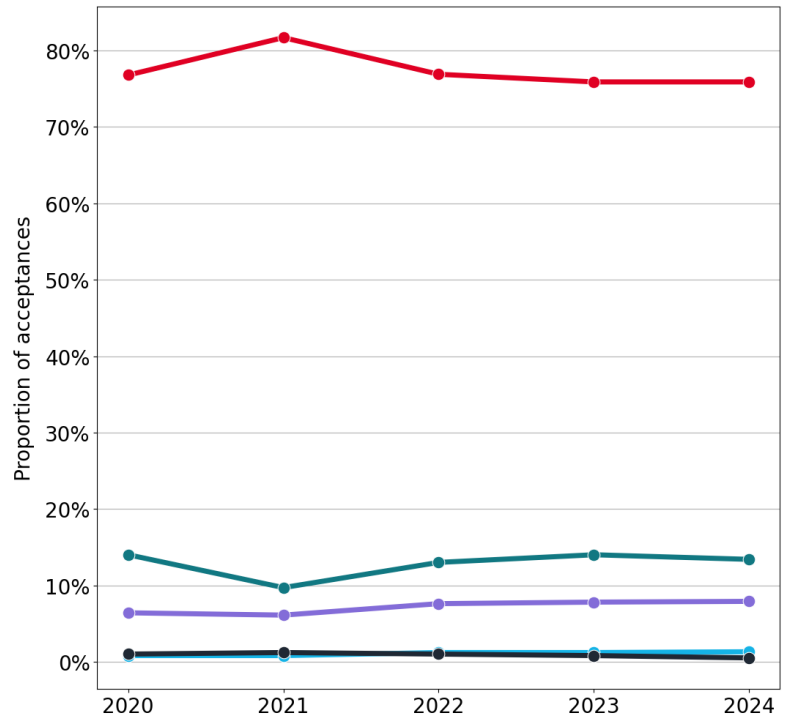
3.10 Proportion of offers by reply

Applicant Reply	2020	2021	2022	2023	2024
Firm	26.4%	25.0%	25.8%	25.5%	25.1%
Insurance	19.6%	19.9%	19.9%	19.7%	20.6%
Decline	53.5%	53.9%	53.4%	54.3%	53.7%
Other	0.5%	1.1%	0.9%	0.5%	0.5%

4. Acceptance routes

4.1 Proportion of acceptances by route

- Firm choice
- Insurance choice
- Main scheme Clearing
- Extra
- Adjustment
- Direct Clearing
- Other main scheme choice



4.2 Acceptances by route

Route	2020	2021	2022	2023	2024
Firm choice	1,105	1,205	1,050	985	1,070
Insurance choice	90	90	105	100	110
Main scheme Clearing	200	145	175	180	190
Extra	10	10	15	15	20
Adjustment	0	0	0	0	0
Direct Clearing	15	5	5	5	15
Other main scheme choice	15	20	15	10	5
All	1,440	1,475	1,365	1,300	1,410

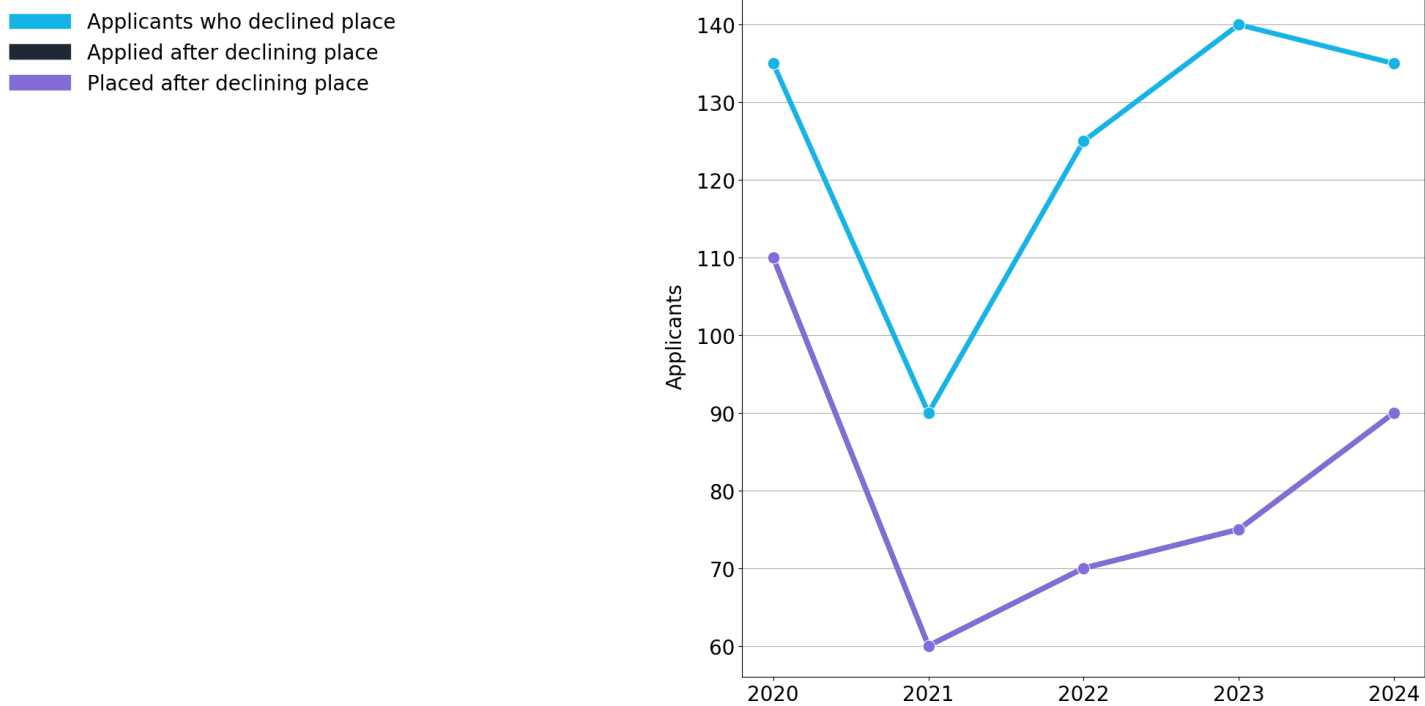
4.3 Proportion of acceptances by route

Route	2020	2021	2022	2023	2024
Firm choice	76.8%	81.7%	76.9%	75.9%	75.9%
Insurance choice	6.4%	6.1%	7.6%	7.8%	7.9%
Main scheme Clearing	14.0%	9.7%	13.0%	14.0%	13.4%
Extra	0.8%	0.8%	1.2%	1.2%	1.3%
Adjustment	0.0%	0.0%	0.0%	0.0%	0.0%
Direct Clearing	1.0%	0.4%	0.4%	0.4%	1.0%
Other main scheme choice	1.0%	1.2%	1.0%	0.8%	0.5%

5. Decline my place

Introduced in 2019, Decline my place is a tool which allows 'placed' applicants to release themselves into Clearing. Once Clearing opens, applicants who are holding a firm unconditional place can use the 'Decline my place' button in their application if they no longer want to go to their firm choice. Once an applicant has declined their place, they release themselves into the Clearing process, and are free to be placed through Clearing. To find out more about how Decline my place works, please see the following: www.ucas.com/applying/after-you-apply/clearing-and-results-day/results-day/declining-your-firm-place.

5.1 Decline my place stats



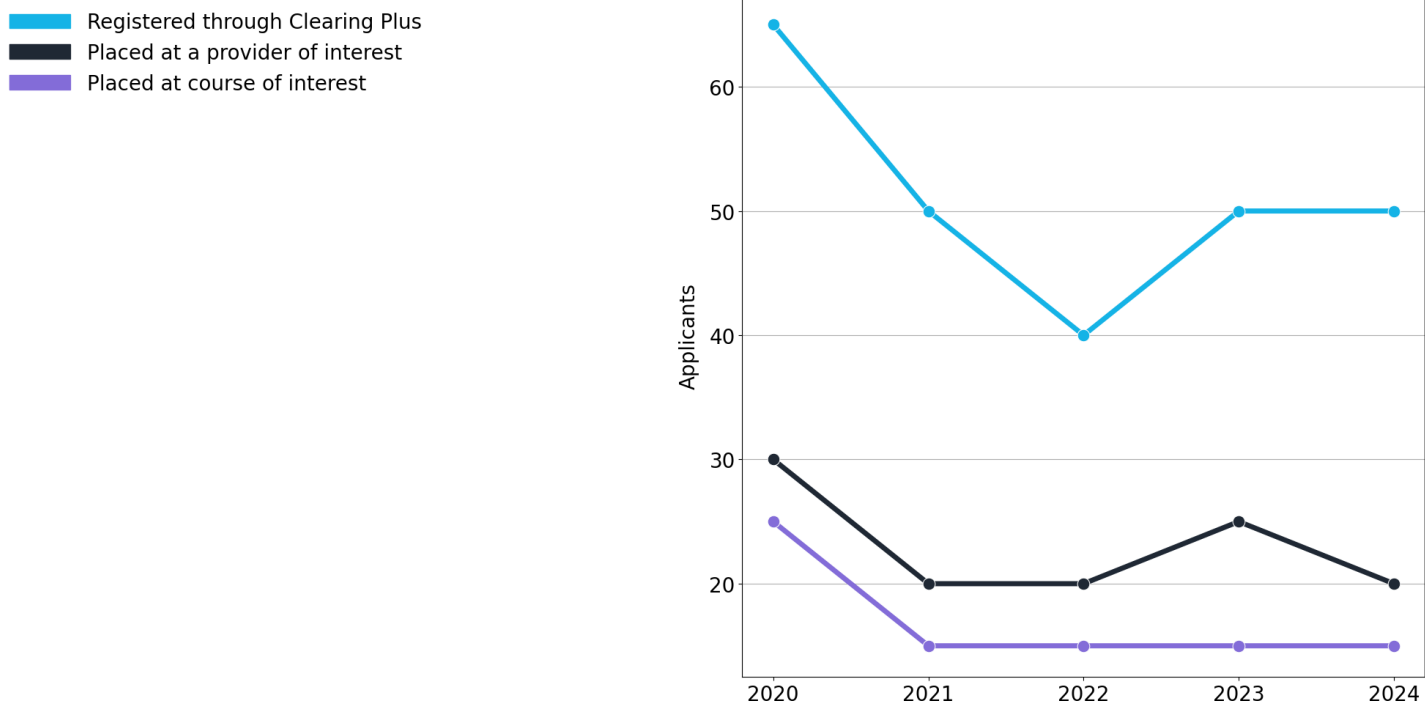
5.2 Decline my place stats

	2020	2021	2022	2023	2024
Applicants who declined their original place	135	90	125	140	135
Applied after declining their original place	110	60	70	75	90
Placed after declining their original place	110	60	70	75	90

6. Clearing Plus

Introduced in 2020, Clearing Plus is a tool which allows 'unplaced' applicants to find tailored course matches in Clearing. It is available once Clearing opens and can be used by those who have been unsuccessful in the main scheme or are applying directly to Clearing. Applicants can register interest in their matched courses which notifies the relevant provider(s) that the applicant would like to be considered for a place. To find out more about how Clearing Plus works, please see the following:
www.ucas.com/applying/after-you-apply/clearing-and-results-day/what-clearing/your-clearing-matches.

6.1 Clearing Plus stats



6.2 Clearing Plus stats

	2020	2021	2022	2023	2024
Applicants registered through Clearing Plus	65	50	40	50	50
Placed at a provider in which they registered interest through Clearing Plus	30	20	20	25	20
Placed on a course in which they registered interest through Clearing Plus	25	15	15	15	15

7. Acceptances and offers by provider tariff group

7.1 Proportion of acceptances by provider tariff group



7.2 Acceptances by provider tariff group

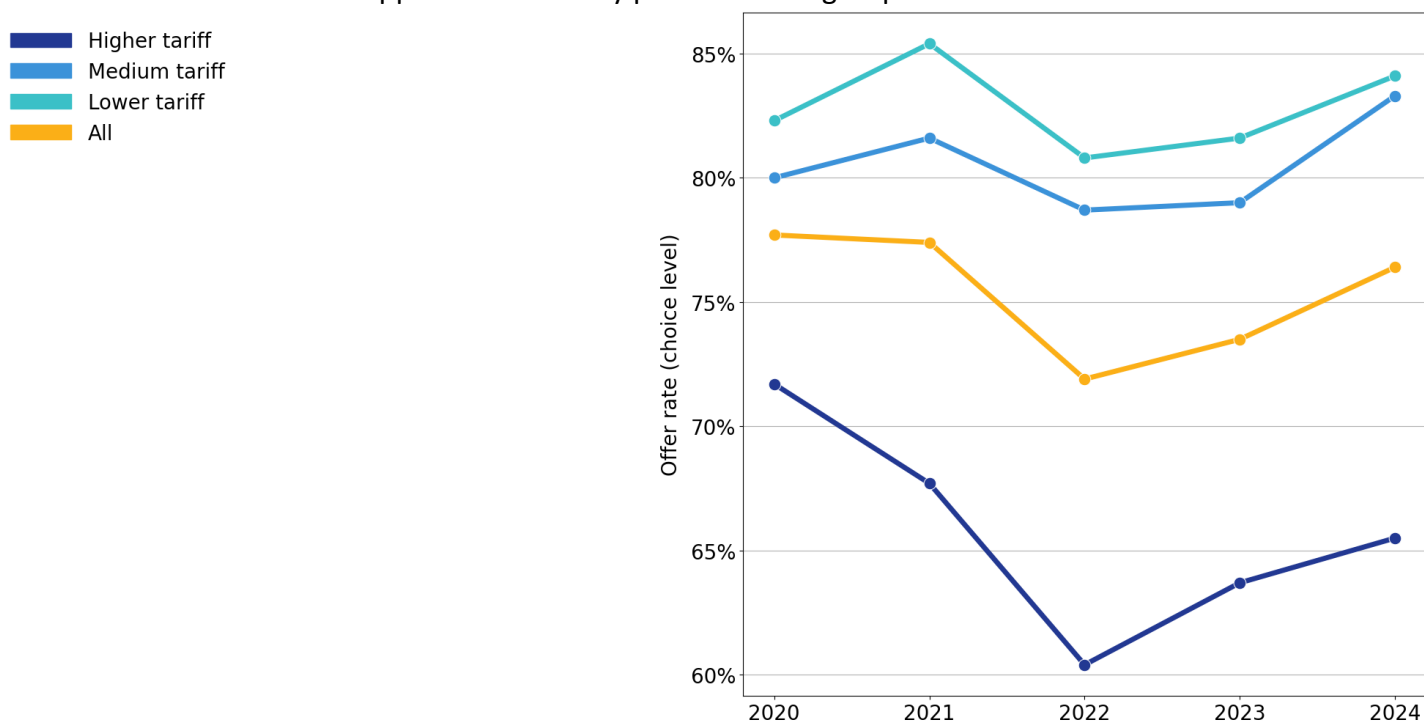
Provider tariff group	2020	2021	2022	2023	2024
Lower tariff	545	500	465	400	425
Medium tariff	465	450	445	460	500
Higher tariff	430	525	455	440	485
All	1,440	1,475	1,365	1,300	1,410

7.3 Proportion of acceptances by provider tariff group

Provider tariff group	2020	2021	2022	2023	2024
Lower tariff	37.7%	33.9%	34.0%	30.9%	30.0%
Medium tariff	32.4%	30.6%	32.7%	35.3%	35.5%
Higher tariff	29.9%	35.5%	33.2%	33.8%	34.5%

7.4 Offer rate (choice level) by provider tariff group

Offer rate for main scheme applicant choices by provider tariff group



7.5 Offers (choice level) by provider tariff group

Number of offers for main scheme applicant choices by provider tariff group

Provider tariff group	2020	2021	2022	2023	2024
Lower tariff	1,805	2,000	1,775	1,625	1,765
Medium tariff	1,905	1,980	1,875	1,925	2,115
Higher tariff	1,865	2,050	1,880	1,915	2,010
All	5,575	6,035	5,535	5,465	5,895

7.6 Offer rate (choice level) by provider tariff group

Offer rate for main scheme applicant choices by provider tariff group

Provider tariff group	2020	2021	2022	2023	2024
Lower tariff	82.3%	85.4%	80.8%	81.6%	84.1%
Medium tariff	80.0%	81.6%	78.7%	79.0%	83.3%
Higher tariff	71.7%	67.7%	60.4%	63.7%	65.5%
All	77.7%	77.4%	71.9%	73.5%	76.4%

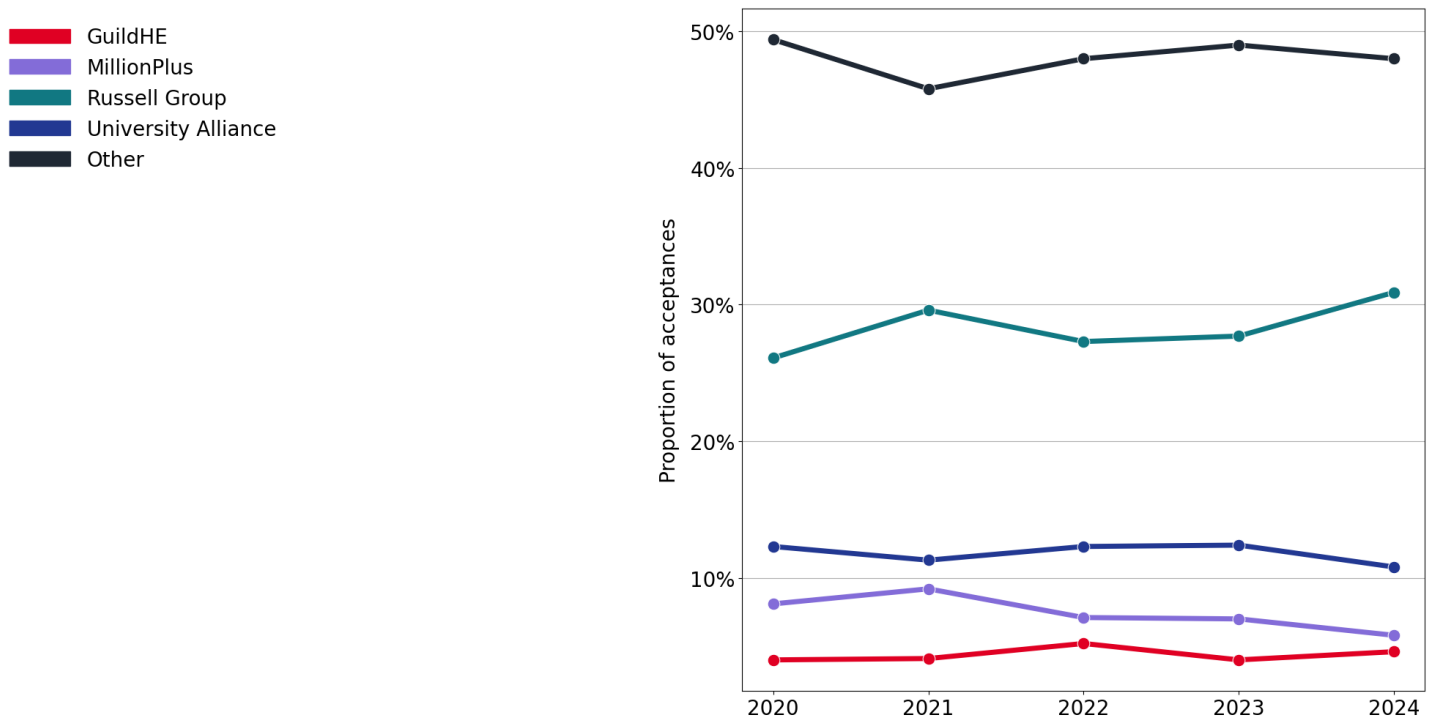
7.7 Main scheme applicant choices by provider tariff group

Number of main scheme applicant choices by provider tariff group

Provider tariff group	2020	2021	2022	2023	2024
Lower tariff	2,190	2,340	2,200	1,995	2,100
Medium tariff	2,380	2,430	2,380	2,435	2,540
Higher tariff	2,600	3,030	3,115	3,000	3,070
All	7,175	7,800	7,695	7,430	7,710

8. Acceptances and offers by provider mission group

8.1 Proportion of acceptances by provider mission group



8.2 Acceptances by provider mission group

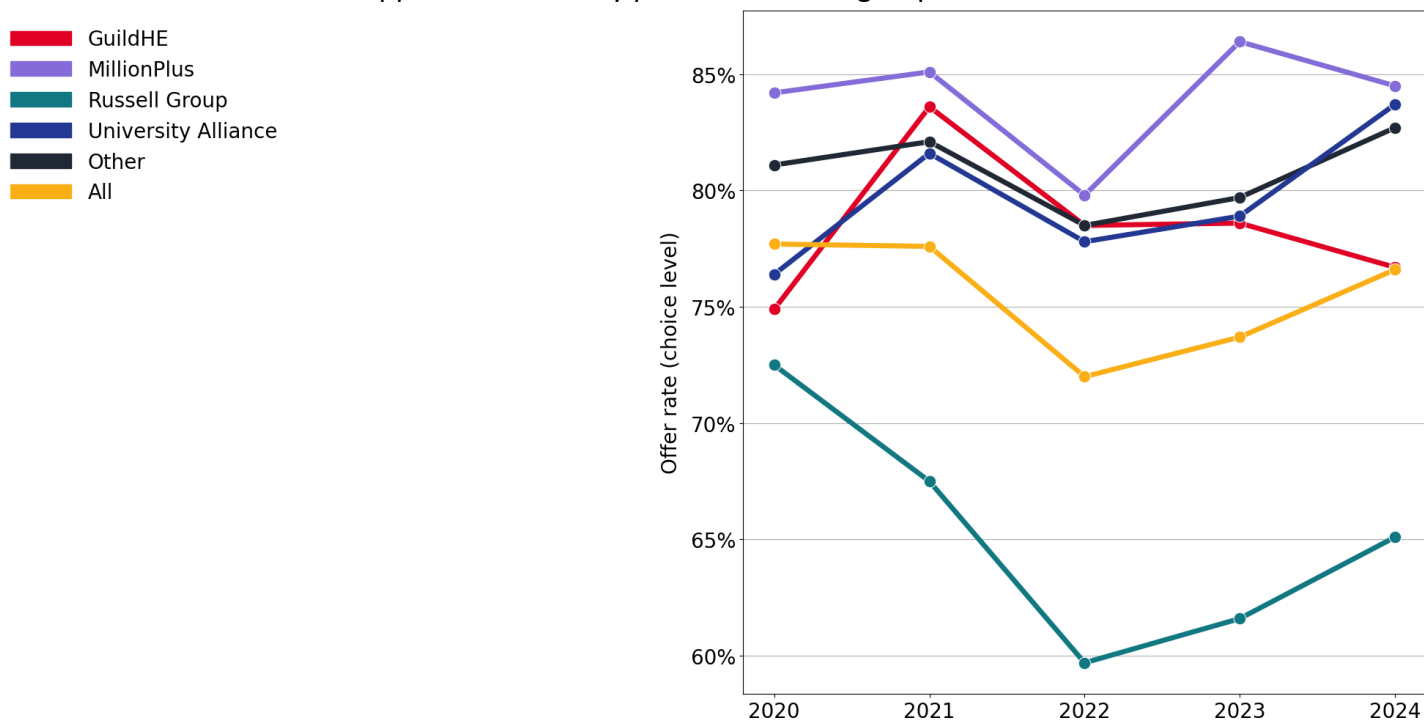
Provider mission group	2020	2021	2022	2023	2024
GuildHE	60	60	70	50	65
MillionPlus	120	135	100	90	80
Russell Group	380	445	375	360	440
University Alliance	180	170	170	160	155
Other	715	685	665	640	685
All	1,450	1,495	1,380	1,310	1,420

8.3 Proportion of acceptances by provider mission group

Provider mission group	2020	2021	2022	2023	2024
GuildHE	4.0%	4.1%	5.2%	4.0%	4.6%
MillionPlus	8.1%	9.2%	7.1%	7.0%	5.8%
Russell Group	26.1%	29.6%	27.3%	27.7%	30.9%
University Alliance	12.3%	11.3%	12.3%	12.4%	10.8%
Other	49.4%	45.8%	48.0%	49.0%	48.0%

8.4 Offer rate (choice level) by provider mission group

Offer rate for main scheme applicant choices by provider mission group



8.5 Offers (choice level) by provider mission group

Number of offers for main scheme applicant choices by provider mission group

Provider mission group	2020	2021	2022	2023	2024
GuildHE	200	275	260	255	255
MillionPlus	420	510	415	425	375
Russell Group	1,635	1,740	1,595	1,615	1,750
University Alliance	755	840	735	735	760
Other	2,620	2,755	2,585	2,500	2,815
All	5,630	6,120	5,590	5,530	5,960

8.6 Offer rate (choice level) by provider mission group

Offer rate for main scheme applicant choices by provider mission group

Provider mission group	2020	2021	2022	2023	2024
GuildHE	74.9%	83.6%	78.5%	78.6%	76.7%
MillionPlus	84.2%	85.1%	79.8%	86.4%	84.5%
Russell Group	72.5%	67.5%	59.7%	61.6%	65.1%
University Alliance	76.4%	81.6%	77.8%	78.9%	83.7%
Other	81.1%	82.1%	78.5%	79.7%	82.7%
All	77.7%	77.6%	72.0%	73.7%	76.6%

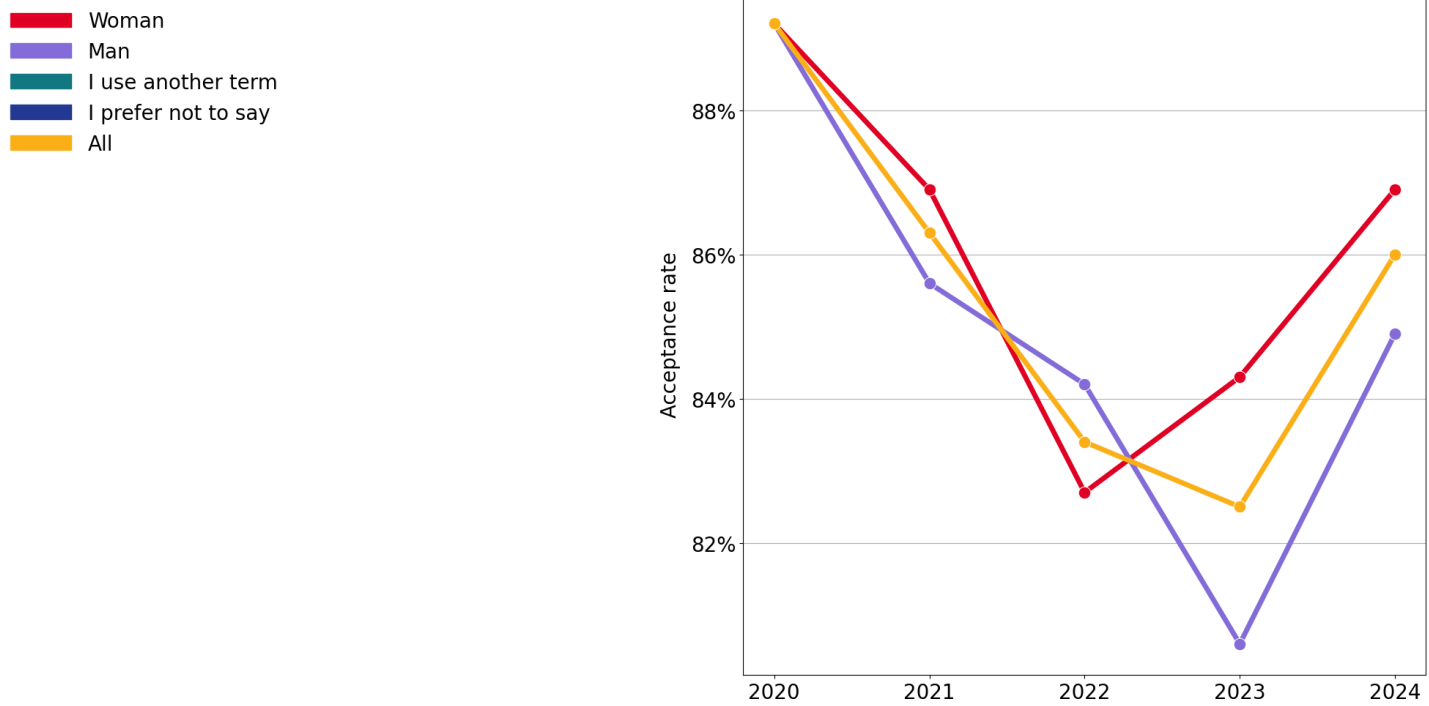
8.7 Main scheme applicant choices by provider mission group

Number of main scheme applicant choices by provider mission group

Provider mission group	2020	2021	2022	2023	2024
GuildHE	265	330	330	325	335
MillionPlus	500	600	520	490	445
Russell Group	2,255	2,580	2,670	2,620	2,690
University Alliance	985	1,030	945	935	910
Other	3,230	3,355	3,290	3,140	3,410
All	7,240	7,895	7,760	7,505	7,785

9. Acceptances by gender

9.1 Acceptance rate by gender



9.2 Applicants by gender

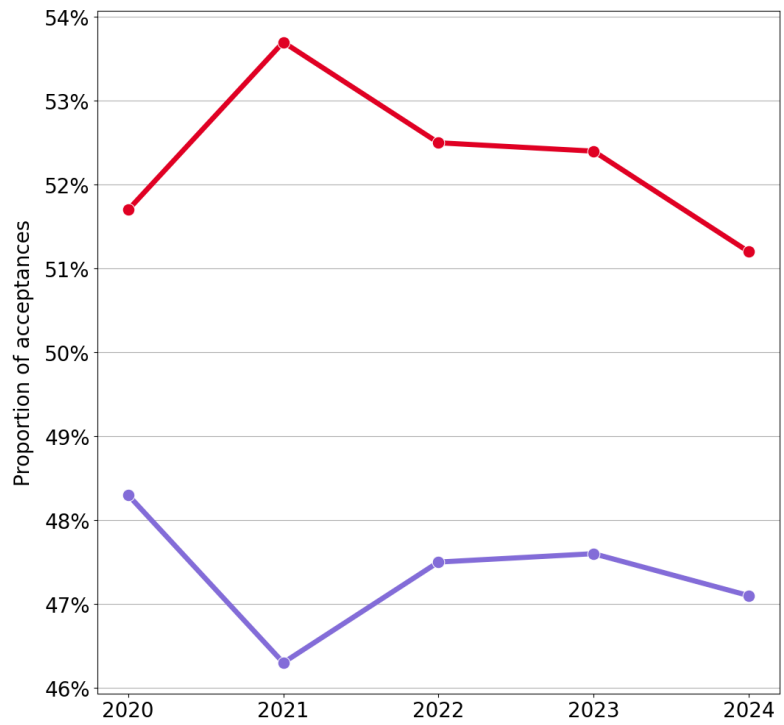
Gender	2020	2021	2022	2023	2024
Woman	835	915	865	805	830
Man	780	800	770	765	780
I use another term	0	0	0	0	10
I prefer not to say	0	0	0	0	15
All	1,615	1,710	1,635	1,575	1,640

9.3 Acceptance rate by gender

Gender	2020	2021	2022	2023	2024
Woman	89.2%	86.9%	82.7%	84.3%	86.9%
Man	89.2%	85.6%	84.2%	80.6%	84.9%
I use another term	0.0%	0.0%	0.0%	0.0%	100.0%
I prefer not to say	0.0%	0.0%	0.0%	0.0%	100.0%
All	89.2%	86.3%	83.4%	82.5%	86.0%

9.4 Proportion of acceptances by gender

- Woman
- Man
- I use another term
- I prefer not to say



9.5 Acceptances by gender

Gender	2020	2021	2022	2023	2024
Woman	745	795	715	680	720
Man	695	685	645	620	665
I use another term	0	0	0	0	10
I prefer not to say	0	0	0	0	10
All	1,440	1,475	1,365	1,300	1,410

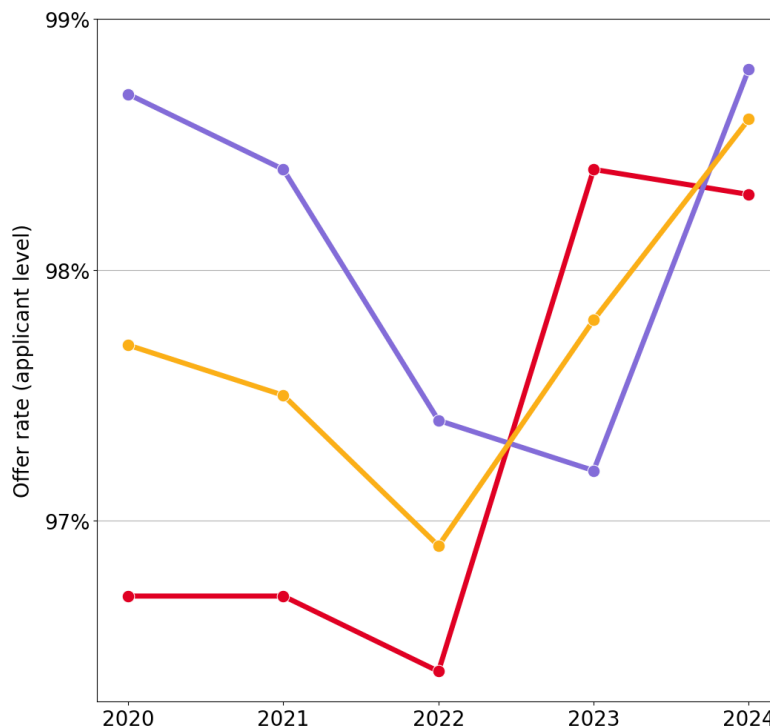
9.6 Proportion of acceptances by gender

Gender	2020	2021	2022	2023	2024
Woman	51.7%	53.7%	52.5%	52.4%	51.2%
Man	48.3%	46.3%	47.5%	47.6%	47.1%
I use another term	0.0%	0.0%	0.0%	0.0%	0.9%
I prefer not to say	0.0%	0.0%	0.0%	0.0%	0.9%

9.7 Offer rate (applicant level) by gender

Offer rate for main scheme applicants by gender

- Woman
- Man
- I use another term
- I prefer not to say
- All



9.8 Offers (applicant level) by gender

Number of main scheme applicants with offers by gender

Gender	2020	2021	2022	2023	2024
Woman	800	885	835	790	810
Man	765	775	740	740	765
I use another term	0	0	0	0	10
I prefer not to say	0	0	0	0	15
All	1,560	1,660	1,575	1,535	1,600

9.9 Offer rate (applicant level) by gender

Offer rate for main scheme applicants by gender

Gender	2020	2021	2022	2023	2024
Woman	96.7%	96.7%	96.4%	98.4%	98.3%
Man	98.7%	98.4%	97.4%	97.2%	98.8%
I use another term	0.0%	0.0%	0.0%	0.0%	100.0%
I prefer not to say	0.0%	0.0%	0.0%	0.0%	100.0%
All	97.7%	97.5%	96.9%	97.8%	98.6%

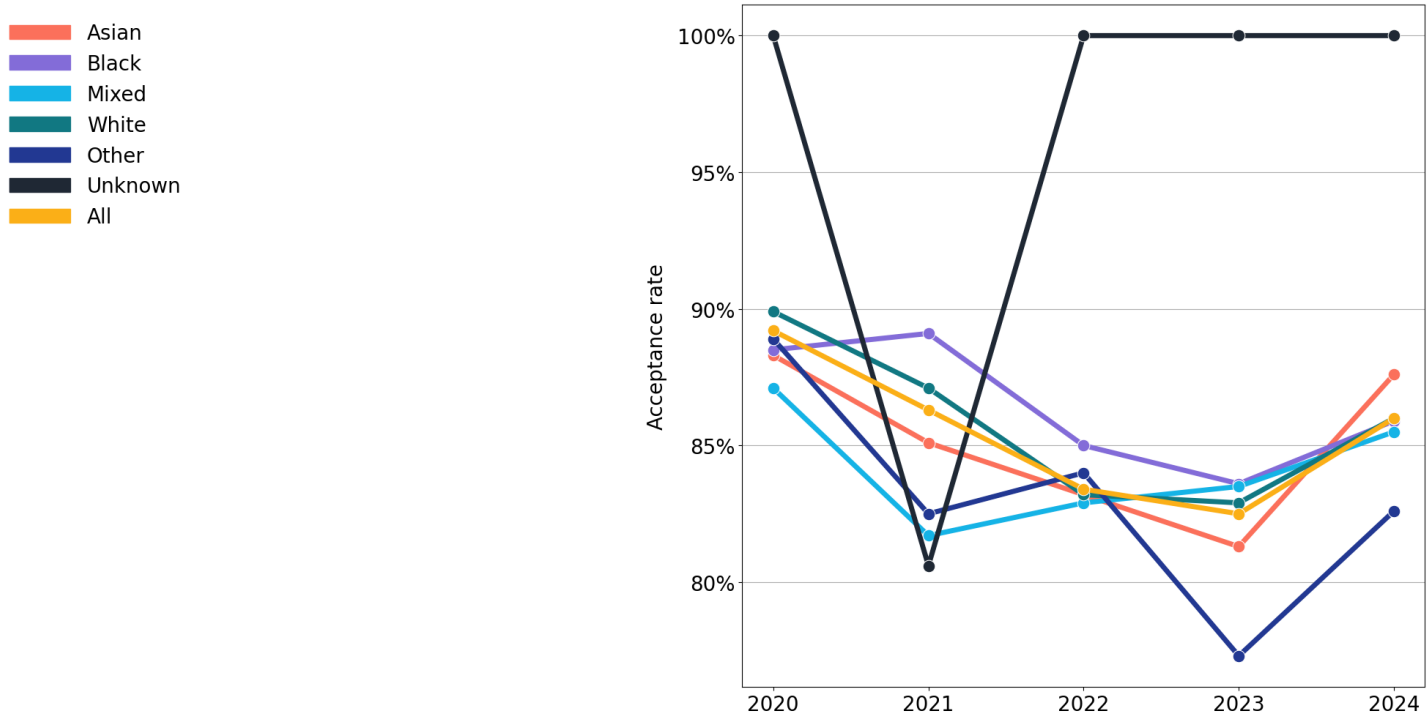
9.10 Main scheme applicants by gender

Number of main scheme applicants by gender

Gender	2020	2021	2022	2023	2024
Woman	825	915	865	805	820
Man	775	790	760	760	775
I use another term	0	0	0	0	10
I prefer not to say	0	0	0	0	15
All	1,600	1,705	1,625	1,565	1,620

10. Acceptances by ethnic group

10.1 Acceptance rate by ethnic group



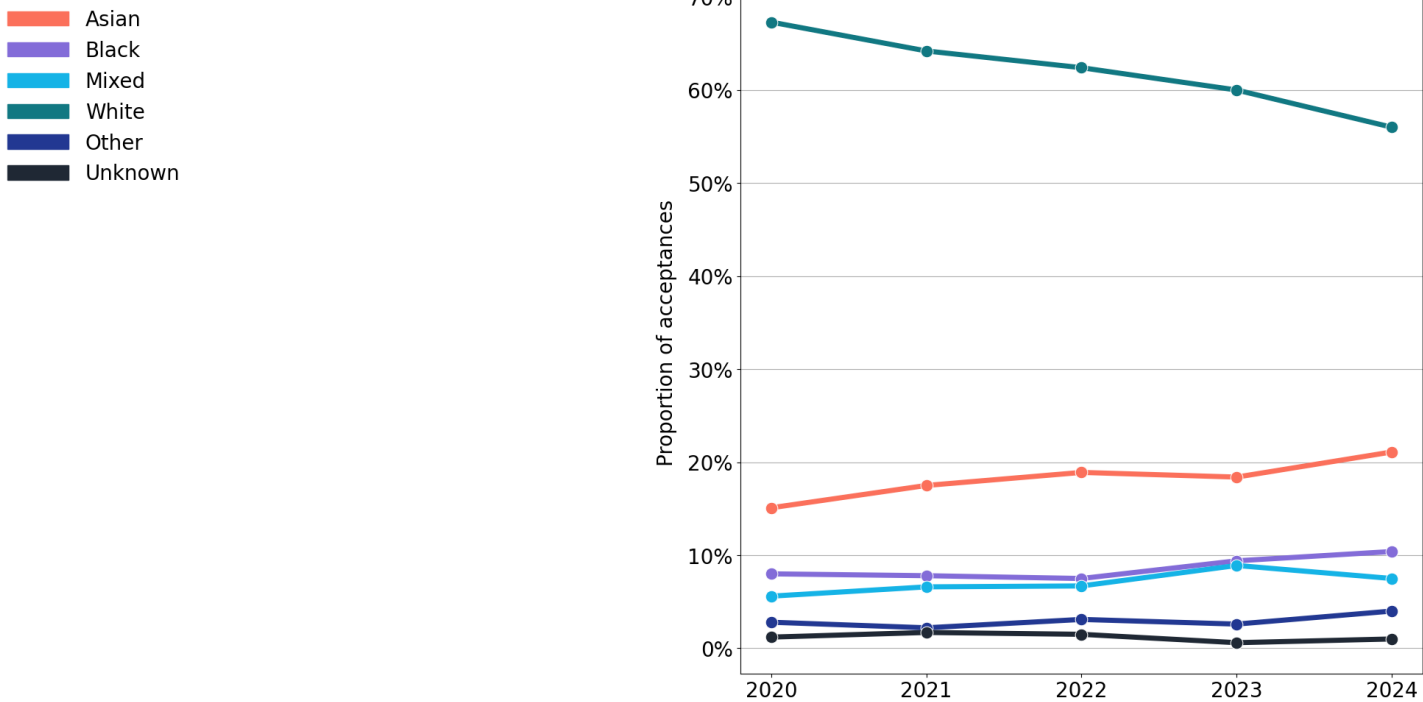
10.2 Applicants by ethnic group

Ethnic group	2020	2021	2022	2023	2024
Asian	245	305	310	295	340
Black	130	130	120	145	170
Mixed	95	120	110	140	125
White	1,080	1,090	1,020	940	920
Other	45	40	50	45	70
Unknown	20	30	20	10	20
All	1,615	1,710	1,635	1,575	1,640

10.3 Acceptance rate by ethnic group

Ethnic group	2020	2021	2022	2023	2024
Asian	88.3%	85.1%	83.2%	81.3%	87.6%
Black	88.5%	89.1%	85.0%	83.6%	85.9%
Mixed	87.1%	81.7%	82.9%	83.5%	85.5%
White	89.9%	87.1%	83.2%	82.9%	86.0%
Other	88.9%	82.5%	84.0%	77.3%	82.6%
Unknown	100.0%	80.6%	100.0%	100.0%	100.0%
All	89.2%	86.3%	83.4%	82.5%	86.0%

10.4 Proportion of acceptances by ethnic group



10.5 Acceptances by ethnic group

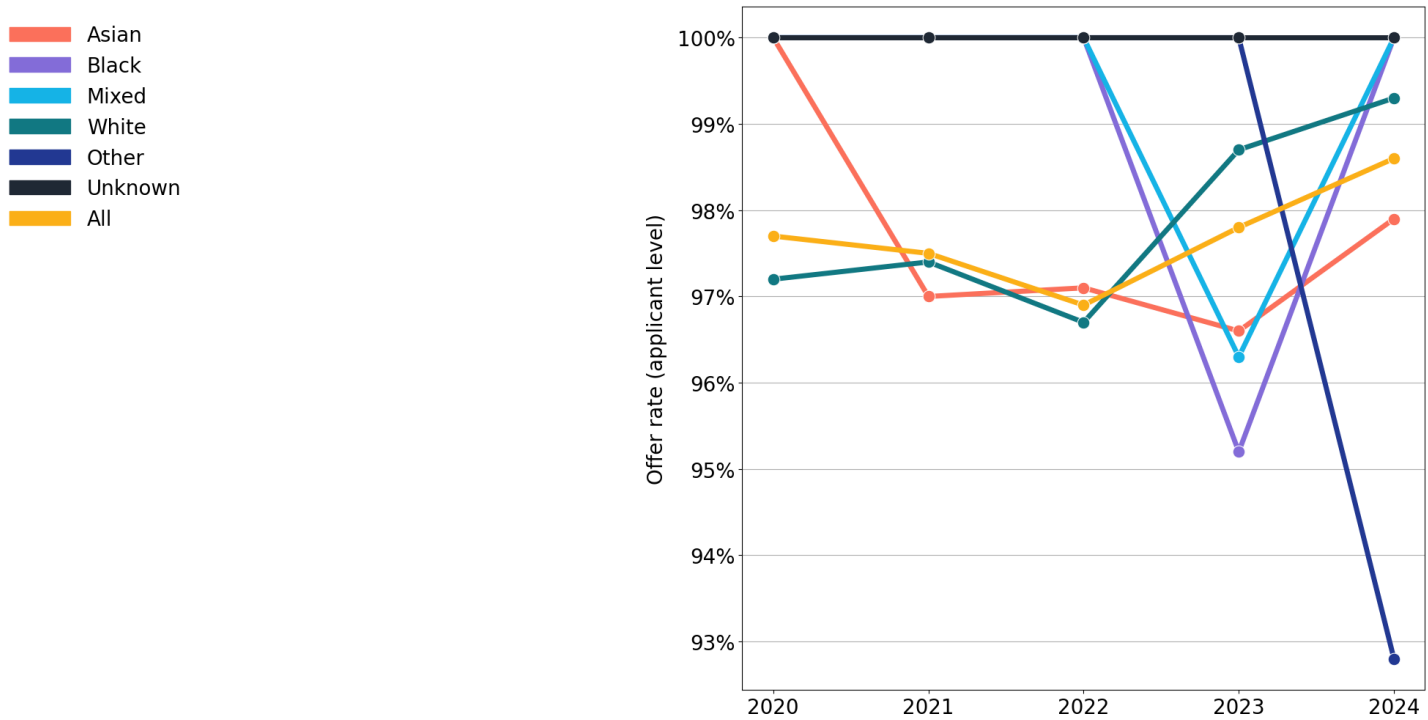
Ethnic group	2020	2021	2022	2023	2024
Asian	220	260	255	240	295
Black	115	115	100	120	145
Mixed	80	100	90	115	105
White	970	950	850	780	790
Other	40	35	40	35	55
Unknown	15	25	20	10	15
All	1,440	1,475	1,365	1,300	1,410

10.6 Proportion of acceptances by ethnic group

Ethnic group	2020	2021	2022	2023	2024
Asian	15.1%	17.5%	18.9%	18.4%	21.1%
Black	8.0%	7.8%	7.5%	9.4%	10.4%
Mixed	5.6%	6.6%	6.7%	8.9%	7.5%
White	67.3%	64.2%	62.4%	60.0%	56.0%
Other	2.8%	2.2%	3.1%	2.6%	4.0%
Unknown	1.2%	1.7%	1.5%	0.6%	1.0%

10.7 Offer rate (applicant level) by ethnic group

Offer rate for main scheme applicants by ethnic group



10.8 Offers (applicant level) by ethnic group

Number of main scheme applicants with offers by ethnic group

Ethnic group	2020	2021	2022	2023	2024
Asian	240	295	300	285	330
Black	130	125	115	140	165
Mixed	90	115	105	130	120
White	1,035	1,055	985	925	905
Other	45	40	50	45	65
Unknown	20	30	20	10	15
All	1,560	1,660	1,575	1,535	1,600

10.9 Offer rate (applicant level) by ethnic group

Offer rate for main scheme applicants by ethnic group

Ethnic group	2020	2021	2022	2023	2024
Asian	100.0%	97.0%	97.1%	96.6%	97.9%
Black	100.0%	100.0%	100.0%	95.2%	100.0%
Mixed	100.0%	100.0%	100.0%	96.3%	100.0%
White	97.2%	97.4%	96.7%	98.7%	99.3%
Other	100.0%	100.0%	100.0%	100.0%	92.8%
Unknown	100.0%	100.0%	100.0%	100.0%	100.0%
All	97.7%	97.5%	96.9%	97.8%	98.6%

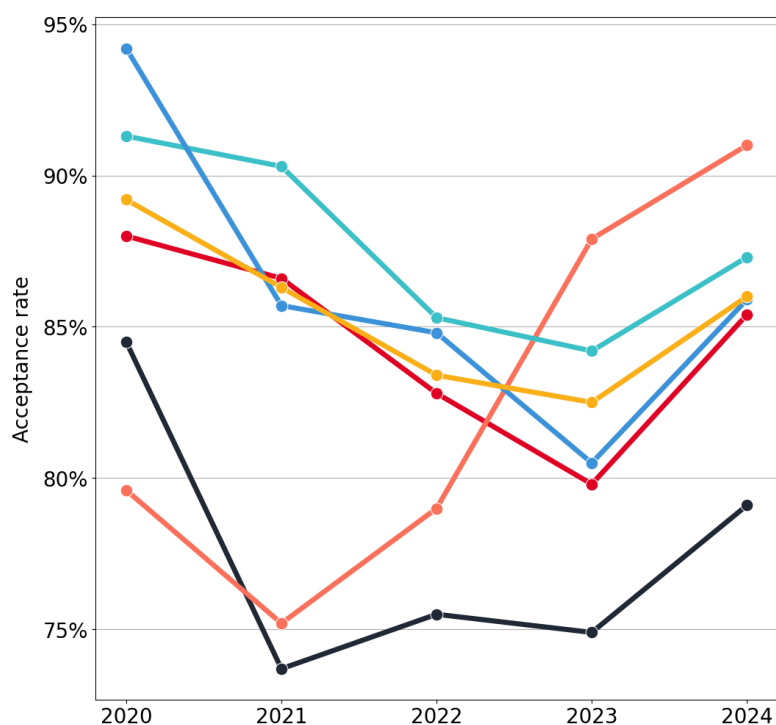
10.10 Main scheme applicants by ethnic group
Number of main scheme applicants by ethnic group

Ethnic group	2020	2021	2022	2023	2024
Asian	245	300	310	295	335
Black	130	125	120	145	170
Mixed	90	120	110	135	120
White	1,065	1,085	1,020	935	910
Other	45	40	50	45	70
Unknown	20	30	20	10	20
All	1,600	1,705	1,625	1,565	1,620

11. Acceptances by qualification

11.1 Acceptance rate by qualification

- No A level, BTEC or SQA
- BTEC
- SQA
- BTEC and SQA
- A level
- A level and BTEC
- A level and SQA
- A level, BTEC and SQA
- All



11.2 Applicants by qualification

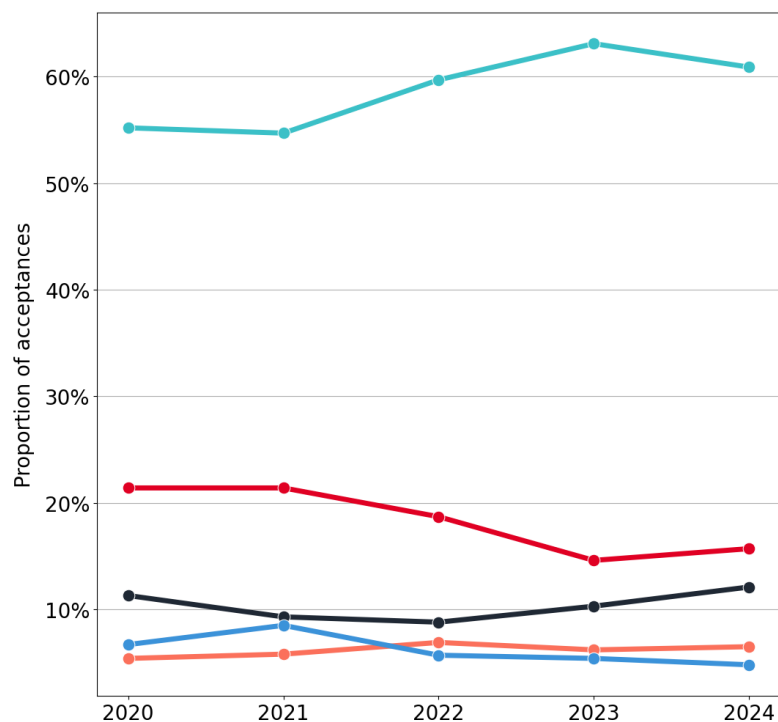
Qualification	2020	2021	2022	2023	2024
No A level, BTEC or SQA	195	185	160	180	215
BTEC	350	365	310	240	260
SQA	100	115	120	90	100
BTEC and SQA	0	0	0	0	0
A level	870	895	955	975	985
A level and BTEC	105	145	90	85	80
A level and SQA	0	5	0	5	0
A level, BTEC and SQA	0	0	0	0	0
All	1,615	1,710	1,635	1,575	1,640

11.3 Acceptance rate by qualification

Qualification	2020	2021	2022	2023	2024
No A level, BTEC or SQA	84.5%	73.7%	75.5%	74.9%	79.1%
BTEC	88.0%	86.6%	82.8%	79.8%	85.4%
SQA	79.6%	75.2%	79.0%	87.9%	91.0%
BTEC and SQA	0.0%	0.0%	0.0%	0.0%	0.0%
A level	91.3%	90.3%	85.3%	84.2%	87.3%
A level and BTEC	94.2%	85.7%	84.8%	80.5%	85.9%
A level and SQA	0.0%	100.0%	0.0%	100.0%	0.0%
A level, BTEC and SQA	0.0%	0.0%	0.0%	0.0%	0.0%
All	89.2%	86.3%	83.4%	82.5%	86.0%

11.4 Proportion of acceptances by qualification

- No A level, BTEC or SQA
- BTEC
- SQA
- BTEC and SQA
- A level
- A level and BTEC
- A level and SQA
- A level, BTEC and SQA



11.5 Acceptances by qualification

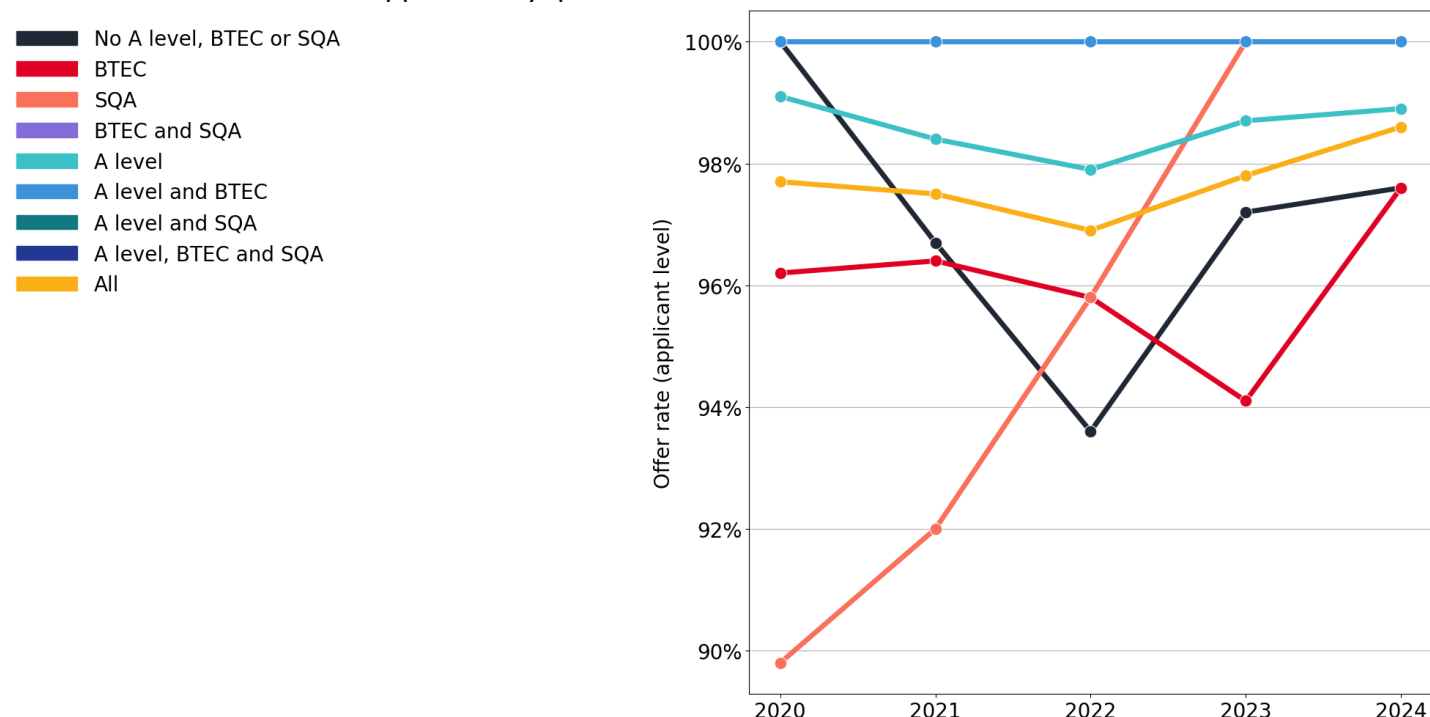
Qualification	2020	2021	2022	2023	2024
No A level, BTEC or SQA	165	135	120	135	170
BTEC	310	315	255	190	220
SQA	80	85	95	80	90
BTEC and SQA	0	0	0	0	0
A level	795	810	815	820	860
A level and BTEC	95	125	80	70	65
A level and SQA	0	5	0	5	0
A level, BTEC and SQA	0	0	0	0	0
All	1,440	1,475	1,365	1,300	1,410

11.6 Proportion of acceptances by qualification

Qualification	2020	2021	2022	2023	2024
No A level, BTEC or SQA	11.3%	9.3%	8.8%	10.3%	12.1%
BTEC	21.4%	21.4%	18.7%	14.6%	15.7%
SQA	5.4%	5.8%	6.9%	6.2%	6.5%
BTEC and SQA	0.0%	0.0%	0.0%	0.0%	0.0%
A level	55.2%	54.7%	59.7%	63.1%	60.9%
A level and BTEC	6.7%	8.5%	5.7%	5.4%	4.8%
A level and SQA	0.0%	0.3%	0.0%	0.4%	0.0%
A level, BTEC and SQA	0.0%	0.0%	0.0%	0.0%	0.0%

11.7 Offer rate (applicant level) by qualification

Offer rate for main scheme applicants by qualification



11.8 Offers (applicant level) by qualification

Number of main scheme applicants with offers by qualification

Qualification	2020	2021	2022	2023	2024
No A level, BTEC or SQA	185	175	145	170	205
BTEC	330	345	295	220	245
SQA	90	105	115	90	100
BTEC and SQA	0	0	0	0	0
A level	860	880	935	960	965
A level and BTEC	100	145	90	85	75
A level and SQA	0	5	0	5	0
A level, BTEC and SQA	0	0	0	0	0
All	1,560	1,660	1,575	1,535	1,600

11.9 Offer rate (applicant level) by qualification

Offer rate for main scheme applicants by qualification

Qualification	2020	2021	2022	2023	2024
No A level, BTEC or SQA	100.0%	96.7%	93.6%	97.2%	97.6%
BTEC	96.2%	96.4%	95.8%	94.1%	97.6%
SQA	89.8%	92.0%	95.8%	100.0%	100.0%
BTEC and SQA	0.0%	0.0%	0.0%	0.0%	0.0%
A level	99.1%	98.4%	97.9%	98.7%	98.9%
A level and BTEC	100.0%	100.0%	100.0%	100.0%	100.0%
A level and SQA	0.0%	100.0%	0.0%	100.0%	0.0%
A level, BTEC and SQA	0.0%	0.0%	0.0%	0.0%	0.0%
All	97.7%	97.5%	96.9%	97.8%	98.6%

11.10 Main scheme applicants by qualification

Number of main scheme applicants by qualification

Qualification	2020	2021	2022	2023	2024
No A level, BTEC or SQA	190	185	155	175	210
BTEC	345	360	305	235	255
SQA	100	115	120	90	100
BTEC and SQA	0	0	0	0	0
A level	865	895	955	970	975
A level and BTEC	100	145	90	85	75
A level and SQA	0	5	0	5	0
A level, BTEC and SQA	0	0	0	0	0
All	1,600	1,705	1,625	1,565	1,620

12. Acceptances and offers by HE provider

12.1 Acceptances by HE provider

Top 20, 2024 rank

HEP and rank		2020	2021	2022	2023	2024
1	De Montfort University	185	130	135	115	105
2	University of Nottingham	50	50	35	45	50
	University of Birmingham	50	45	25	40	50
4	Nottingham Trent University	75	70	50	50	45
5	University of Derby	45	40	30	50	40
	University of Leicester	25	30	25	35	40
7	Aston University, Birmingham	15	25	20	20	35
8	University of Bristol	20	25	25	25	30
	University of Staffordshire	50	50	35	25	30
	University of Southampton	15	15	20	15	30
	University of Surrey	10	5	15	15	30
12	Cardiff University	20	30	20	25	25
	Birmingham City University	30	25	25	20	25
	Loughborough University	25	25	20	20	25
	Royal Holloway, University of London	20	10	20	20	25
	King's College London, University of London	15	25	10	15	25
	Queen Mary University of London	20	15	15	10	25
	UCL (University College London)	10	20	5	10	25
19	University of Manchester	20	25	30	30	20
	University of Liverpool	20	15	20	25	20
	University of Portsmouth	20	15	15	25	20
	Bournemouth University	15	20	10	15	20
	Coventry University	25	25	20	15	20
	University of Glasgow	15	25	25	15	20
	University of Leeds	15	15	10	10	20

12.2 Total different HE providers applicants accepted to

	2020	2021	2022	2023	2024
Number of HE providers	97	95	97	92	96

12.3 Offers (choice level) by HE provider Top 20, 2024 rank

HEP and rank		2020	2021	2022	2023	2024
1	De Montfort University	415	355	345	255	325
2	Nottingham Trent University	265	255	210	195	215
3	University of Birmingham	185	165	130	140	170
4	University of Nottingham	210	195	180	185	165
5	University of Leicester	115	120	130	130	150
6	University of Derby	160	160	110	120	145
7	Birmingham City University	120	130	115	130	130
	University of Southampton	90	80	105	90	130
9	Cardiff University	95	120	105	110	125
	Coventry University	120	130	120	95	125
11	University of Bristol	110	115	90	115	120
12	Aston University, Birmingham	85	90	100	85	115
13	University of Manchester	110	140	110	120	110
	Loughborough University	130	115	95	105	110
	University of Exeter	85	105	85	85	110
	Queen Mary University of London	60	70	75	75	110
	University of Surrey	70	65	60	70	110
18	University of Leeds	95	100	75	105	95
	Manchester Metropolitan University	55	100	85	80	95
	University of Reading	60	55	70	75	95

12.4 Total different HE providers applicants received offers from

	2020	2021	2022	2023	2024
Number of HE providers	136	140	137	140	135

13. Acceptances and offers by CAH1 subject group

13.1 Acceptances by CAH1 subject group

CAH1 subject group	2020	2021	2022	2023	2024
(CAH01) medicine and dentistry	35	45	30	45	40
(CAH02) subjects allied to medicine	155	160	170	140	155
(CAH03) biological and sport sciences	100	105	70	85	85
(CAH04) psychology	80	75	80	75	75
(CAH05) veterinary sciences	5	5	10	10	10
(CAH06) agriculture, food and related studies	5	10	5	10	10
(CAH07) physical sciences	50	45	45	45	50
(CAH09) mathematical sciences	30	30	35	25	25
(CAH10) engineering and technology	125	110	80	65	105
(CAH11) computing	95	90	95	100	130
(CAH13) architecture, building and planning	25	25	25	25	25
(CAH15) social sciences	160	145	145	145	155
(CAH16) law	70	80	60	80	75
(CAH17) business and management	160	175	195	170	175
(CAH19) language and area studies	55	45	45	35	30
(CAH20) historical, philosophical and religious studies	45	65	40	60	45
(CAH22) education and teaching	50	40	30	35	25
(CAH23) combined and general studies	5	5	0	5	5
(CAH24) media, journalism and communications	35	30	30	30	30
(CAH25) design, and creative and performing arts	135	155	145	95	135
(CAH26) geography, earth and environmental studies	25	30	25	30	25
All	1,445	1,475	1,365	1,300	1,410

13.2 Offers (choice level) by CAH1 subject group

CAH1 subject group	2020	2021	2022	2023	2024
(CAH01) medicine and dentistry	95	90	50	95	80
(CAH02) subjects allied to medicine	530	610	540	520	585
(CAH03) biological and sport sciences	425	485	315	370	395
(CAH04) psychology	380	365	390	325	380
(CAH05) veterinary sciences	10	15	20	25	15
(CAH06) agriculture, food and related studies	20	30	35	40	30
(CAH07) physical sciences	190	185	210	180	235
(CAH09) mathematical sciences	135	145	130	110	115
(CAH10) engineering and technology	490	440	355	310	410
(CAH11) computing	405	400	395	400	555
(CAH13) architecture, building and planning	90	110	110	115	95
(CAH15) social sciences	675	630	635	730	715
(CAH16) law	305	340	235	300	310
(CAH17) business and management	680	825	870	760	825
(CAH19) language and area studies	230	200	210	155	130
(CAH20) historical, philosophical and religious studies	215	260	205	280	220
(CAH22) education and teaching	140	125	90	115	95
(CAH23) combined and general studies	20	20	10	10	10
(CAH24) media, journalism and communications	125	140	145	155	125
(CAH25) design, and creative and performing arts	305	480	480	320	440
(CAH26) geography, earth and environmental studies	110	135	115	145	140
All	5,575	6,035	5,535	5,465	5,895

14. Acceptances and offers by CAH3 subject group

14.1 Acceptances by CAH3 subject group

Top 20, 2024 rank

CAH3 subject group and rank		2020	2021	2022	2023	2024
1	(CAH16-01-01) law	70	80	60	80	75
2	(CAH04-01-01) psychology (non-specific)	75	70	70	70	65
	(CAH11-01-01) computer science	50	50	55	55	65
4	(CAH15-02-01) economics	40	40	45	40	60
5	(CAH25-01-03) design studies	40	60	55	40	55
6	(CAH03-02-01) sport and exercise sciences	60	60	45	40	45
7	(CAH01-01-02) medicine (non-specific)	30	40	20	40	35
	(CAH15-03-01) politics	25	30	30	35	35
9	(CAH15-01-02) sociology	45	35	35	35	30
	(CAH20-01-01) history	30	40	25	30	30
	(CAH17-01-04) management studies	10	20	20	25	30
	(CAH17-01-07) finance	20	20	30	25	30
	(CAH17-01-08) accounting	20	25	30	25	30
14	(CAH17-01-02) business studies	40	60	45	40	25
	(CAH02-04-02) adult nursing	35	40	30	25	25
	(CAH09-01-01) mathematics	30	25	30	25	25
	(CAH17-01-01) business and management (non-specific)	25	15	30	25	25
	(CAH02-05-03) biomedical sciences (non-specific)	25	30	35	20	25
	(CAH11-01-06) computer games and animation	25	20	10	20	25
	(CAH24-01-05) media studies	20	15	20	20	25
	(CAH10-01-02) mechanical engineering	30	30	20	15	25
	(CAH11-01-04) software engineering	10	15	15	15	25
	(CAH17-01-03) marketing	20	15	20	15	25

14.2 Total different CAH3 subject groups applicants accepted to

	2020	2021	2022	2023	2024
Number of CAH3 subject groups	94	90	86	83	89

14.3 Offers (choice level) by CAH3 subject group Top 20, 2024 rank

CAH3 subject group and rank		2020	2021	2022	2023	2024
1	(CAH04-01-01) psychology (non-specific)	340	315	335	290	335
2	(CAH11-01-01) computer science	240	205	250	245	325
3	(CAH16-01-01) law	305	340	235	300	310
4	(CAH15-02-01) economics	190	185	190	195	270
5	(CAH25-01-03) design studies	105	190	205	150	200
6	(CAH03-02-01) sport and exercise sciences	220	250	175	185	190
7	(CAH15-03-01) politics	120	130	105	175	155
8	(CAH15-01-02) sociology	210	165	195	200	150
9	(CAH17-01-02) business studies	150	205	185	170	145
10	(CAH17-01-03) marketing	80	100	95	90	140
11	(CAH17-01-08) accounting	100	115	120	115	135
12	(CAH20-01-01) history	145	160	130	155	125
	(CAH02-05-03) biomedical sciences (non-specific)	120	150	125	95	125
14	(CAH17-01-01) business and management (non-specific)	85	105	145	115	120
15	(CAH17-01-07) finance	95	100	115	125	115
	(CAH17-01-04) management studies	80	120	120	100	115
	(CAH07-02-01) chemistry	75	70	95	60	115
18	(CAH09-01-01) mathematics	130	140	120	110	110
19	(CAH24-01-05) media studies	80	90	90	100	100
20	(CAH10-01-02) mechanical engineering	110	135	95	95	90

14.4 Total different CAH3 subject groups applicants received offers for

	2020	2021	2022	2023	2024
Number of CAH3 subject groups	124	124	120	123	127

Technical notes and definitions

Applicant

A person who has made an application in the UCAS system during the cycle reported. This includes those who submit applications for deferred entry.

Acceptance / Placed applicant

An applicant who at the end of the cycle has been placed for entry into higher education.

Acceptance rate

The number of acceptances divided by the number of applicants.

Withdrawn

An applicant who no longer wishes to be considered for a place and completely withdraws their application.

Main scheme

The main UCAS application scheme through which up to five providers/courses can be applied to. This opens in September and closes to new applications on 30 June the following year.

Direct to Clearing

Applicants who register to apply after 30 June. Applicants cannot make parallel applications through this route - only one application will be active at a given point in time.

Deferred

An application for deferred entry. Most applications are into the academic year that starts immediately at the end of the application cycle.

Deadline

One of key application deadlines during the UCAS application cycle. May be: 15 October for medicine and dentistry courses or applications to Oxford or Cambridge; the equal consideration deadline (ECD) in January for most undergraduate courses; 30 June for any other main scheme choices. Applicants who apply after 30 June can only enter directly into Clearing.

Choice

An applicant's application to a course at a provider.

Offers (Choice level)

The number of main scheme applicant choices which have received an offer as captured at 30 June deadline.

Offers (Applicant level)

The number of main scheme applicants holding at least one offer as captured at 30 June deadline.

Offer Rate (Applicant level)

The number of main scheme applicants holding at least one offer divided by the number of main scheme applicants as captured at 30 June deadline.

Offer Rate (Choice level)

The number of main scheme applicant choices which have received an offer divided by the number of main scheme applicant choices as captured at 30 June deadline.

Provider decision

Applications are referred to providers who consider the application and return a decision. The decision can be to make an offer (conditional or unconditional) or to reject the application. Applications that are yet to receive a decision are classified as 'Other'. In this report, if an application is withdrawn, it is classified as 'Reject'.

Reply

When an applicant receives an offer to their application, they may respond by setting the offer as the 'Firm' choice, 'Insurance', or to 'decline' the offer. If an applicant received at least one offer, they may choose at most one to be their Firm, at most one to be their Insurance choice if they have at least two offers, and other offers must be declined.

Acceptance route

Firm Choice, Insurance choice, Main Scheme Clearing, Direct Clearing, Adjustment, Extra, Other Main Scheme Choice

Firm Choice

The applicant was accepted to their first choice. In order to be defined as placed at their firm choice, an applicant must have been placed at the provider with which they hold their firm choice at 30 June.

Insurance Choice

The applicant was accepted to their second choice. In order to be defined as placed at their insurance choice, an applicant must have been placed at the provider with which they hold their insurance choice at 30 June.

Other Main Scheme Choice

An applicant who applied by 30 June and was accepted to a main scheme choice but had not responded, or was awaiting an offer, at 30 June.

Main Scheme Clearing

An applicant was unsuccessful in the main scheme (i.e. applied before 30 June) and subsequently found a place using Clearing.

Direct Clearing

An applicant who applied via Clearing without an initial application through the main scheme.

Adjustment

A route where applicants who have met and exceeded the conditions of their firm choice choose to take up an alternative offer

Extra

A route where applicants who held no offers after using all of their main scheme choices, make additional choices.

Decline My Place

Introduced in 2019, Decline my place is a tool which allows 'placed' applicants to release themselves into Clearing. Once Clearing opens, applicants who are holding a firm unconditional place can use the 'Decline my place' button in their application if they no longer want to go to their firm choice. Once an applicant has declined their place, they release themselves into the Clearing process, and are free to be placed through Clearing. To find out more about how Decline my place works, please see the following:
www.ucas.com/applying/after-you-apply/clearing-and-results-day/results-day/declining-your-firm-place.

Clearing Plus

Introduced in 2020, Clearing Plus is a tool which allows 'unplaced' applicants to find tailored course matches in Clearing. It is available once Clearing opens and can be used by those who have been unsuccessful in the main scheme or are applying directly to Clearing. Applicants can register interest in their matched courses which notifies the relevant provider(s) that the applicant would like to be considered for a place. To find out more about how Clearing Plus works, please see the following:
www.ucas.com/applying/after-you-apply/clearing-and-results-day/what-clearing/your-clearing-matches.

Provider tariff group

The grouping of providers based on the average levels of attainment of their accepted applicants (summarised through UCAS Tariff points) in a period of application cycles spanning from 2004 to 2011. Each group of providers accounted for around a third of all UK 18 year old acceptances in these cycles, with the following categories: 'Higher tariff', 'Medium tariff' and 'Lower tariff'.

Mission Group

For further information on mission groups, please refer to the following document:
<https://www.ucas.com/file/642566/download?token=WH5IEHa5>

Qualification

Indicates if an applicant has achieved the specified qualification or combination (at least one) as identified either on application or through Awarding Body Linkage process. Please note: This flag is not updated beyond the end of the application cycle for each applicant (i.e. if an applicant applied in the 2017 cycle without achieving an A level, but went on to obtain this qualification in 2018, the value for the applicant applying in 2017 would remain 'A level qualification not identified').

CAH1 subject group

Common aggregation hierarchy 1, the classification used to categorise HECoS course subject codes into 21 subject groups. A course may be associated with up to 5 individual subject codes each with a respective percentage weight. Summing these weightings can create fractions of offers and applications which, when rounded, may be different to the totals seen elsewhere in the report. For more information about HECoS and the common aggregation hierarchy, go to www.hesa.ac.uk/support/documentation/hecos.

CAH3 subject Group

Common aggregation hierarchy 3, the classification used to categorise HECoS course subject codes into 167 subject groups. A course may be associated with up to 5 individual subject codes each with a respective percentage weight. Summing these weightings can create fractions of offers and applications which, when rounded, may be different to the totals seen elsewhere in the report. For more information about HECoS and the common aggregation hierarchy, go to www.hesa.ac.uk/support/documentation/hecos.