

June Deadline Analysis: Sex and age

Applicants by sex and age at the 30 June deadline

I.2.1 Applicants by sex : All domiciles

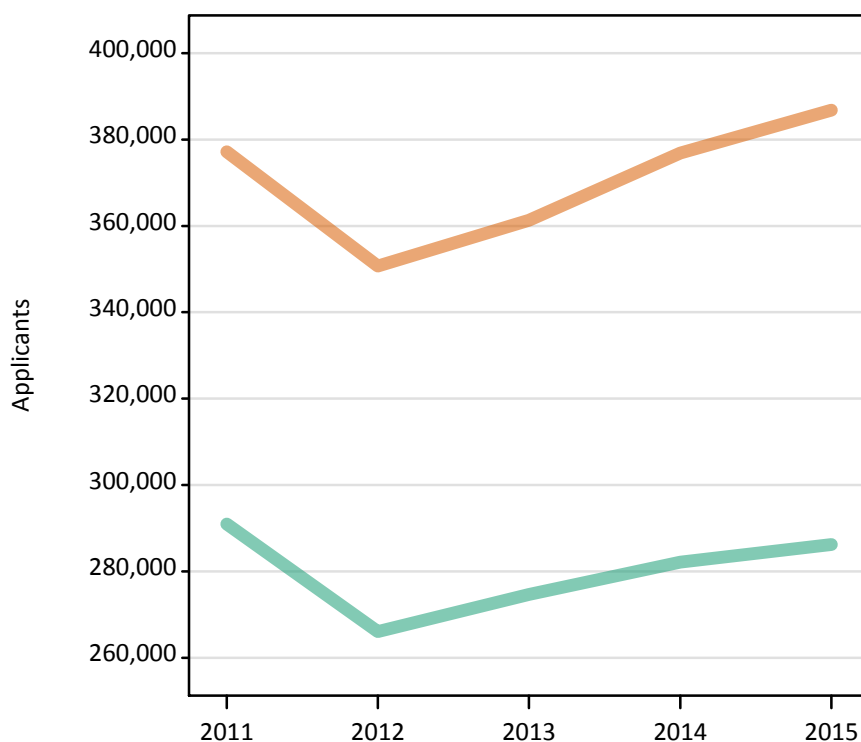
Difference between cycle and 2014 cycle

Men
Women



I.2.2 Applicants by sex : All domiciles

Men
Women



I.2.3 Applicants by age and sex : All domiciles

Age group and sex of applicant		2011	2012	2013	2014	2015
Under 18	Women	5,220	5,260	5,580	6,340	6,450
	Men	3,880	4,110	4,510	4,810	5,100
18	Women	165,370	161,980	164,560	169,690	179,180
	Men	132,200	127,310	129,790	133,980	137,840
19	Women	73,320	63,620	69,470	72,330	73,350
	Men	62,470	53,450	58,720	59,750	60,790
20-24	Women	75,790	68,440	70,460	74,180	72,970
	Men	63,100	55,530	56,390	57,620	56,250
25-29	Women	22,930	20,440	20,900	22,010	22,490
	Men	13,490	11,560	11,720	11,850	11,890
30-34	Women	13,180	12,110	12,090	12,500	12,470
	Men	6,720	5,770	5,550	5,620	5,480
35 and over	Women	21,360	18,840	18,220	19,810	19,880
	Men	9,110	8,290	7,960	8,540	8,900
All ages	Women	377,180	350,680	361,270	376,860	386,800
	Men	290,970	266,020	274,640	282,170	286,240

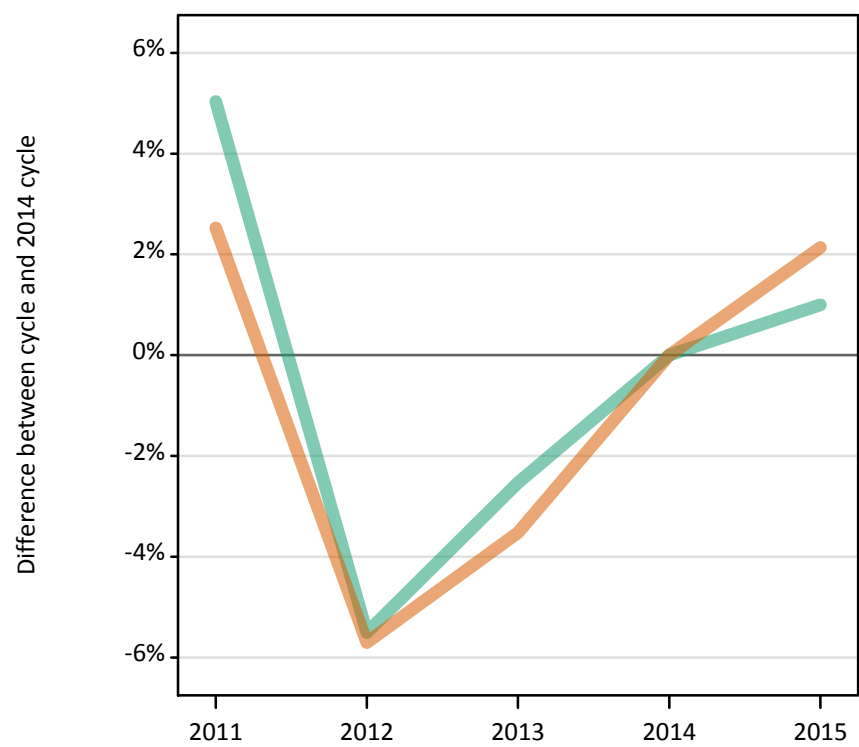
I.2.4 Applicants by age and sex : All domiciles

Difference between cycle and 2014 cycle

Age group and sex of applicant		2011	2012	2013	2014	2015
Under 18	Women	-18%	-17%	-12%	0%	2%
	Men	-19%	-14%	-6%	0%	6%
18	Women	-3%	-5%	-3%	0%	6%
	Men	-1%	-5%	-3%	0%	3%
19	Women	1%	-12%	-4%	0%	1%
	Men	5%	-11%	-2%	0%	2%
20-24	Women	2%	-8%	-5%	0%	-2%
	Men	10%	-4%	-2%	0%	-2%
25-29	Women	4%	-7%	-5%	0%	2%
	Men	14%	-2%	-1%	0%	0%
30-34	Women	5%	-3%	-3%	0%	-0%
	Men	20%	3%	-1%	0%	-2%
35 and over	Women	8%	-5%	-8%	0%	0%
	Men	7%	-3%	-7%	0%	4%
All ages	Women	0%	-7%	-4%	0%	3%
	Men	3%	-6%	-3%	0%	1%

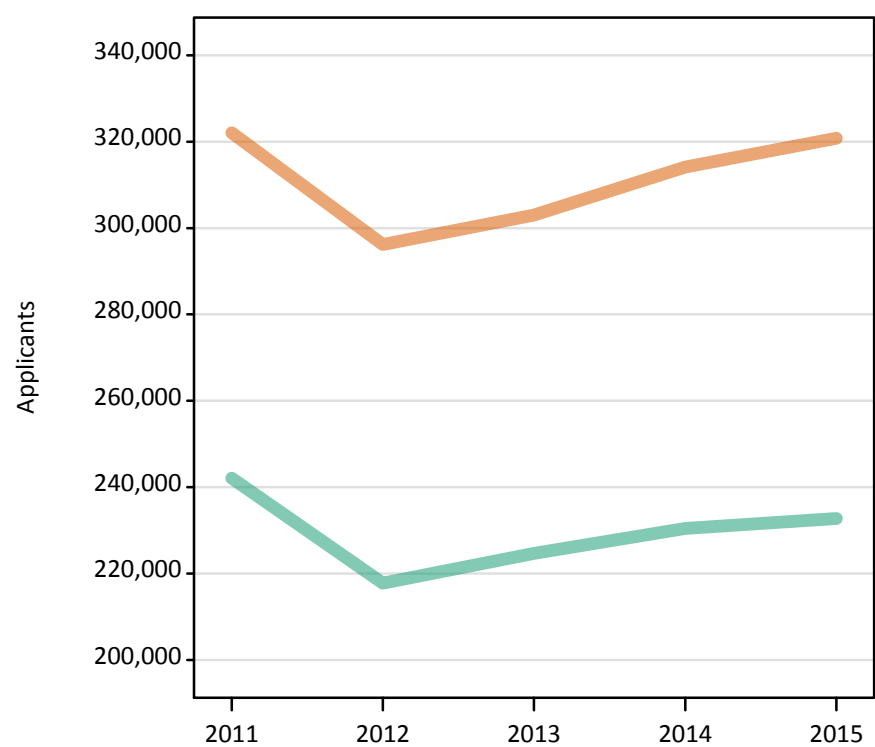
I.2.5 Applicants by sex : UK
Difference between cycle and 2014 cycle

Men
Women



I.2.6 Applicants by sex : UK

Men
Women



I.2.7 Applicants by age and sex : UK

Age group and sex of applicant		2011	2012	2013	2014	2015
Under 18	Women	1,350	1,050	940	1,000	1,030
	Men	910	780	740	710	780
18	Women	148,350	144,270	144,900	148,460	155,970
	Men	119,030	113,150	114,490	117,510	119,880
19	Women	58,050	48,510	53,640	55,030	55,440
	Men	49,490	41,010	45,830	46,390	47,000
20-24	Women	59,930	53,680	55,020	58,040	56,510
	Men	46,900	40,450	41,350	42,630	41,670
25-29	Women	20,860	18,700	19,130	20,210	20,500
	Men	11,090	9,490	9,770	10,070	9,980
30-34	Women	12,580	11,570	11,560	12,000	11,940
	Men	5,990	5,100	4,930	5,040	4,930
35 and over	Women	20,940	18,420	17,850	19,390	19,430
	Men	8,650	7,810	7,520	8,130	8,520
All ages	Women	322,060	296,200	303,040	314,120	320,820
	Men	242,070	217,770	224,630	230,460	232,770

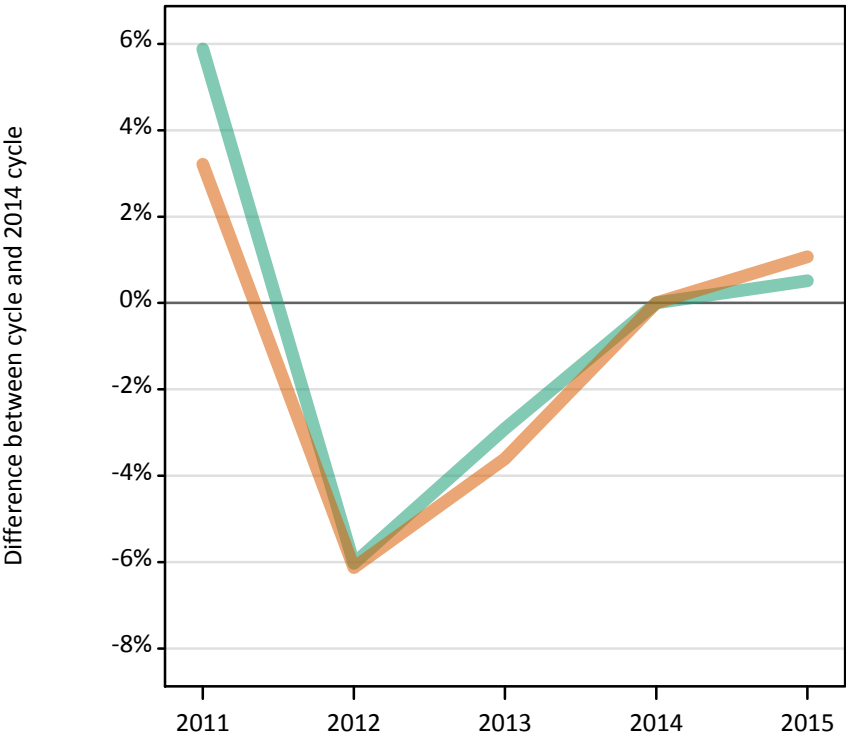
I.2.8 Applicants by age and sex : UK

Difference between cycle and 2014 cycle

Age group and sex of applicant		2011	2012	2013	2014	2015
Under 18	Women	34%	4%	-6%	0%	2%
	Men	29%	10%	4%	0%	10%
18	Women	-0%	-3%	-2%	0%	5%
	Men	1%	-4%	-3%	0%	2%
19	Women	5%	-12%	-3%	0%	1%
	Men	7%	-12%	-1%	0%	1%
20-24	Women	3%	-8%	-5%	0%	-3%
	Men	10%	-5%	-3%	0%	-2%
25-29	Women	3%	-7%	-5%	0%	1%
	Men	10%	-6%	-3%	0%	-1%
30-34	Women	5%	-4%	-4%	0%	-1%
	Men	19%	1%	-2%	0%	-2%
35 and over	Women	8%	-5%	-8%	0%	0%
	Men	6%	-4%	-7%	0%	5%
All ages	Women	3%	-6%	-4%	0%	2%
	Men	5%	-6%	-3%	0%	1%

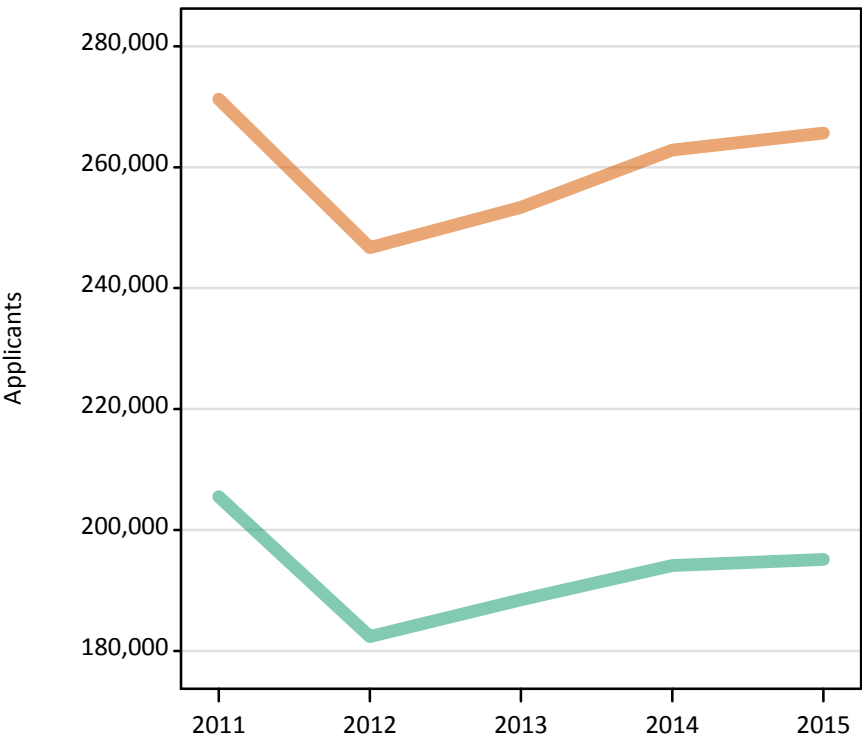
I.2.9 Applicants by sex : England
Difference between cycle and 2014 cycle

Men
Women



I.2.10 Applicants by sex : England

Men
Women



I.2.11 Applicants by age and sex : England

Age group and sex of applicant		2011	2012	2013	2014	2015
Under 18	Women	730	510	490	550	530
	Men	510	420	420	420	490
18	Women	124,000	119,920	121,030	124,140	130,690
	Men	100,450	95,260	96,510	99,420	101,680
19	Women	50,650	41,380	46,420	47,720	48,080
	Men	43,860	35,560	40,310	40,750	41,230
20-24	Women	49,540	43,650	44,560	47,100	44,610
	Men	39,240	32,710	33,070	34,480	33,160
25-29	Women	17,390	15,440	15,700	16,500	15,980
	Men	8,910	7,560	7,690	7,970	7,550
30-34	Women	10,730	9,870	9,770	10,080	9,570
	Men	5,030	4,150	4,010	4,090	3,850
35 and over	Women	18,240	15,940	15,390	16,740	16,190
	Men	7,510	6,720	6,440	6,960	7,130
All ages	Women	271,260	246,710	253,350	262,830	265,640
	Men	205,510	182,380	188,450	194,100	195,100

I.2.12 Applicants by age and sex : England

Difference between cycle and 2014 cycle

Age group and sex of applicant		2011	2012	2013	2014	2015
Under 18	Women	32%	-7%	-11%	0%	-5%
	Men	20%	1%	-0%	0%	17%
18	Women	-0%	-3%	-3%	0%	5%
	Men	1%	-4%	-3%	0%	2%
19	Women	6%	-13%	-3%	0%	1%
	Men	8%	-13%	-1%	0%	1%
20-24	Women	5%	-7%	-5%	0%	-5%
	Men	14%	-5%	-4%	0%	-4%
25-29	Women	5%	-6%	-5%	0%	-3%
	Men	12%	-5%	-4%	0%	-5%
30-34	Women	6%	-2%	-3%	0%	-5%
	Men	23%	1%	-2%	0%	-6%
35 and over	Women	9%	-5%	-8%	0%	-3%
	Men	8%	-3%	-7%	0%	3%
All ages	Women	3%	-6%	-4%	0%	1%
	Men	6%	-6%	-3%	0%	1%

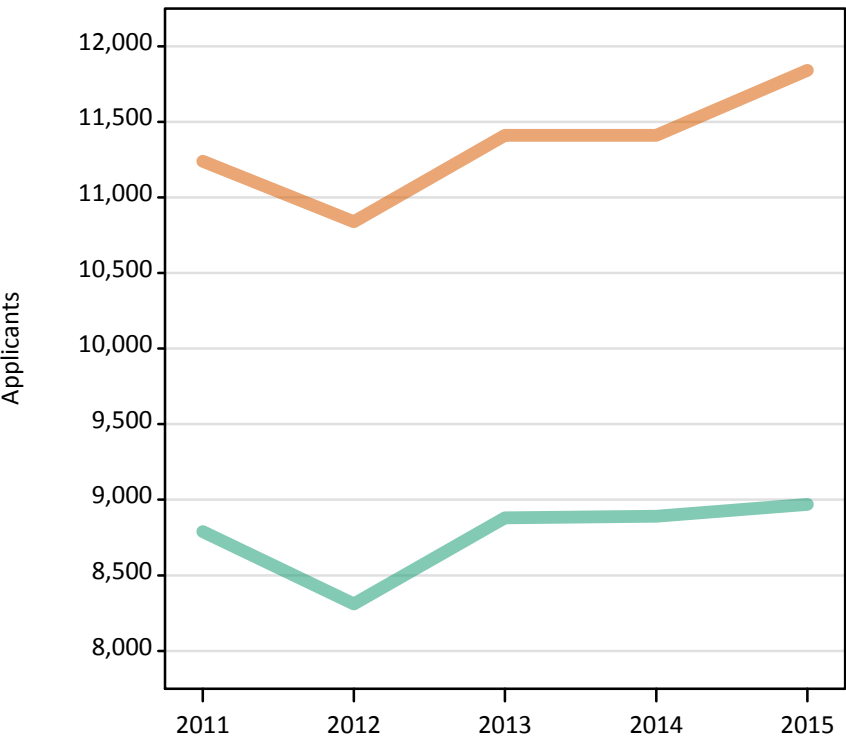
I.2.13 Applicants by sex : Northern Ireland
Difference between cycle and 2014 cycle

Men
Women



I.2.14 Applicants by sex : Northern Ireland

Men
Women



I.2.15 Applicants by age and sex : Northern Ireland

Age group and sex of applicant		2011	2012	2013	2014	2015
Under 18	Women	30	30	20	20	20
	Men	20	20	20	10	10
18	Women	6,740	6,710	6,540	6,410	6,840
	Men	5,220	5,000	5,170	5,090	5,130
19	Women	1,720	1,530	1,700	1,690	1,710
	Men	1,390	1,230	1,340	1,430	1,460
20-24	Women	1,830	1,740	2,010	2,110	2,090
	Men	1,590	1,570	1,810	1,810	1,780
25-29	Women	480	430	570	600	580
	Men	350	280	320	300	310
30-34	Women	180	180	260	270	280
	Men	110	110	110	120	140
35 and over	Women	270	220	320	320	320
	Men	110	120	130	130	130
All ages	Women	11,240	10,840	11,410	11,410	11,840
	Men	8,790	8,310	8,880	8,890	8,970

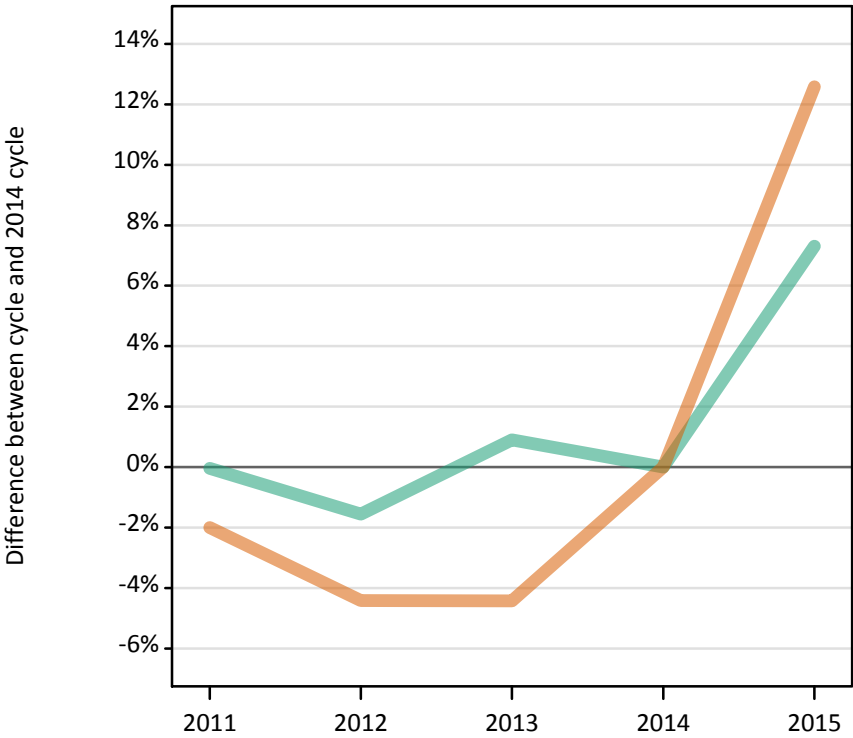
I.2.16 Applicants by age and sex : Northern Ireland

Difference between cycle and 2014 cycle

Age group and sex of applicant		2011	2012	2013	2014	2015
Under 18	Women	53%	94%	6%	0%	24%
	Men	100%	55%	73%	0%	9%
18	Women	5%	5%	2%	0%	7%
	Men	2%	-2%	1%	0%	1%
19	Women	2%	-9%	1%	0%	1%
	Men	-2%	-14%	-6%	0%	3%
20-24	Women	-13%	-17%	-5%	0%	-1%
	Men	-12%	-13%	-0%	0%	-2%
25-29	Women	-19%	-29%	-5%	0%	-3%
	Men	16%	-6%	7%	0%	5%
30-34	Women	-33%	-33%	-2%	0%	6%
	Men	-7%	-9%	-8%	0%	18%
35 and over	Women	-17%	-31%	-1%	0%	-2%
	Men	-16%	-10%	-4%	0%	-3%
All ages	Women	-1%	-5%	0%	0%	4%
	Men	-1%	-6%	-0%	0%	1%

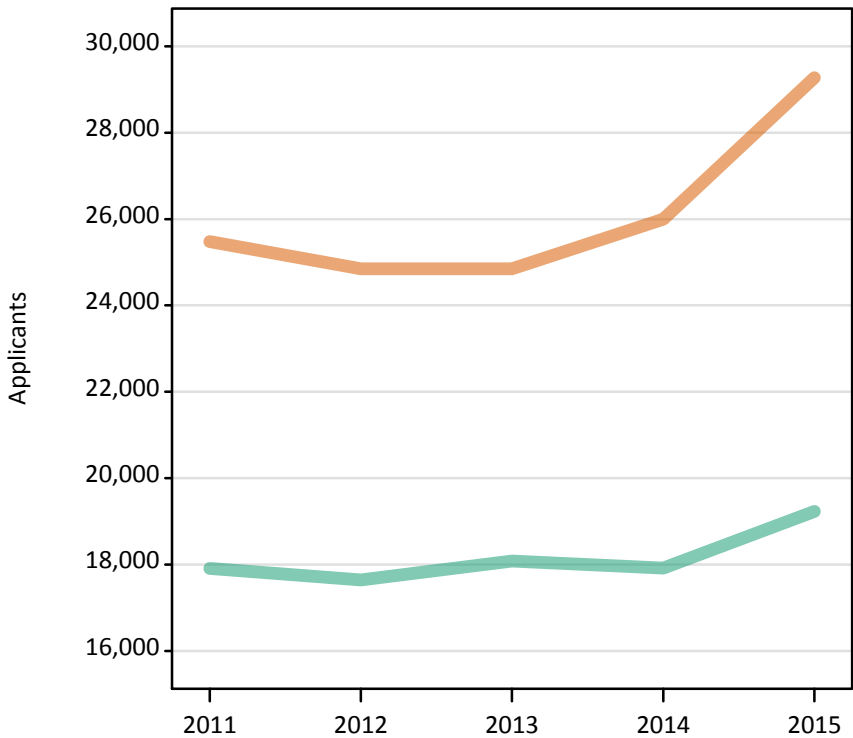
I.2.17 Applicants by sex : Scotland
Difference between cycle and 2014 cycle

Men
Women



I.2.18 Applicants by sex : Scotland

Men
Women



I.2.19 Applicants by age and sex : Scotland

Age group and sex of applicant		2011	2012	2013	2014	2015
Under 18	Women	560	490	410	420	460
	Men	370	320	280	260	270
18	Women	11,010	11,030	10,920	11,320	11,470
	Men	8,350	8,070	8,110	8,040	8,100
19	Women	3,270	3,300	3,210	3,210	3,340
	Men	2,350	2,380	2,350	2,320	2,410
20-24	Women	5,920	5,670	5,960	6,270	7,320
	Men	4,200	4,320	4,710	4,570	5,000
25-29	Women	1,970	1,900	1,890	2,090	3,000
	Men	1,330	1,210	1,310	1,340	1,690
30-34	Women	1,120	980	1,020	1,110	1,520
	Men	620	610	620	630	750
35 and over	Women	1,640	1,470	1,440	1,580	2,170
	Men	710	720	690	750	1,010
All ages	Women	25,480	24,850	24,850	26,000	29,270
	Men	17,910	17,640	18,080	17,920	19,230

I.2.20 Applicants by age and sex : Scotland

Difference between cycle and 2014 cycle

Age group and sex of applicant		2011	2012	2013	2014	2015
Under 18	Women	34%	16%	-2%	0%	9%
	Men	40%	23%	7%	0%	3%
18	Women	-3%	-3%	-3%	0%	1%
	Men	4%	0%	1%	0%	1%
19	Women	2%	3%	0%	0%	4%
	Men	1%	3%	1%	0%	4%
20-24	Women	-6%	-10%	-5%	0%	17%
	Men	-8%	-5%	3%	0%	9%
25-29	Women	-6%	-9%	-10%	0%	43%
	Men	-1%	-10%	-2%	0%	26%
30-34	Women	1%	-11%	-7%	0%	37%
	Men	-1%	-2%	-1%	0%	20%
35 and over	Women	3%	-7%	-9%	0%	37%
	Men	-6%	-5%	-8%	0%	33%
All ages	Women	-2%	-4%	-4%	0%	13%
	Men	-0%	-2%	1%	0%	7%

I.2.21 Applicants by sex : Wales

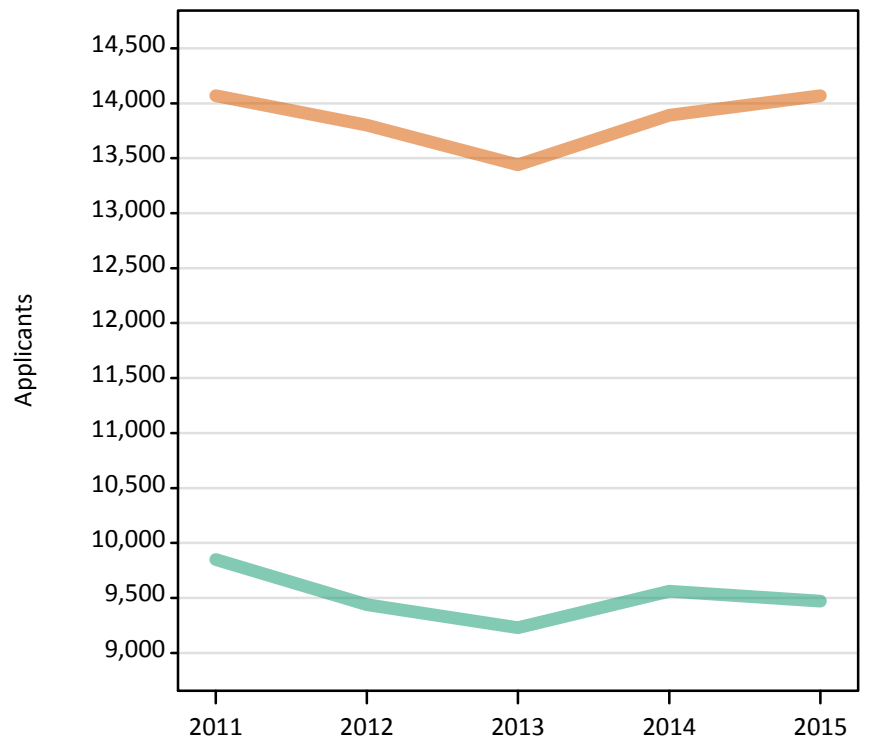
Difference between cycle and 2014 cycle

Men
Women



I.2.22 Applicants by sex : Wales

Men
Women



I.2.23 Applicants by age and sex : Wales

Age group and sex of applicant		2011	2012	2013	2014	2015
Under 18	Women	30	10	30	20	20
	Men	20	20	20	20	0
18	Women	6,610	6,610	6,410	6,590	6,970
	Men	5,020	4,810	4,710	4,950	4,960
19	Women	2,420	2,300	2,320	2,420	2,310
	Men	1,890	1,840	1,830	1,890	1,900
20-24	Women	2,640	2,610	2,490	2,550	2,490
	Men	1,870	1,840	1,770	1,760	1,740
25-29	Women	1,020	930	970	1,020	950
	Men	500	440	450	460	430
30-34	Women	550	540	510	550	570
	Men	230	230	190	200	180
35 and over	Women	800	790	710	740	760
	Men	320	260	260	290	260
All ages	Women	14,070	13,800	13,440	13,890	14,070
	Men	9,850	9,440	9,230	9,560	9,470

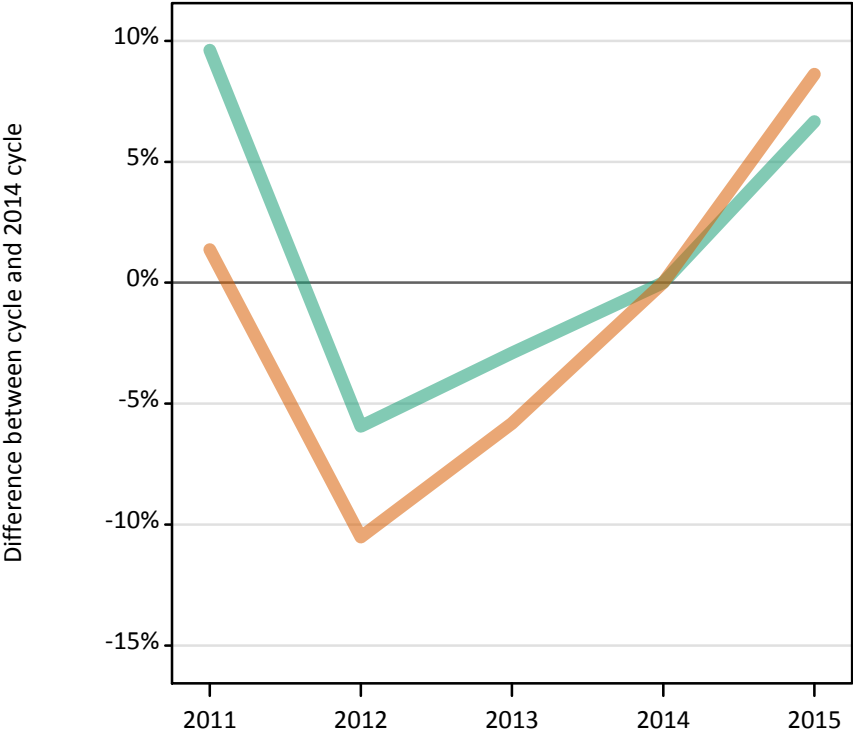
I.2.24 Applicants by age and sex : Wales

Difference between cycle and 2014 cycle

Age group and sex of applicant		2011	2012	2013	2014	2015
Under 18	Women	120%	-13%	67%	0%	40%
	Men	20%	0%	33%	0%	-80%
18	Women	0%	0%	-3%	0%	6%
	Men	1%	-3%	-5%	0%	0%
19	Women	0%	-5%	-4%	0%	-4%
	Men	0%	-3%	-3%	0%	0%
20-24	Women	4%	2%	-3%	0%	-2%
	Men	6%	5%	1%	0%	-1%
25-29	Women	0%	-8%	-5%	0%	-6%
	Men	9%	-4%	-3%	0%	-5%
30-34	Women	-1%	-3%	-8%	0%	2%
	Men	15%	14%	-6%	0%	-9%
35 and over	Women	8%	6%	-5%	0%	3%
	Men	11%	-9%	-9%	0%	-10%
All ages	Women	1%	-1%	-3%	0%	1%
	Men	3%	-1%	-4%	0%	-1%

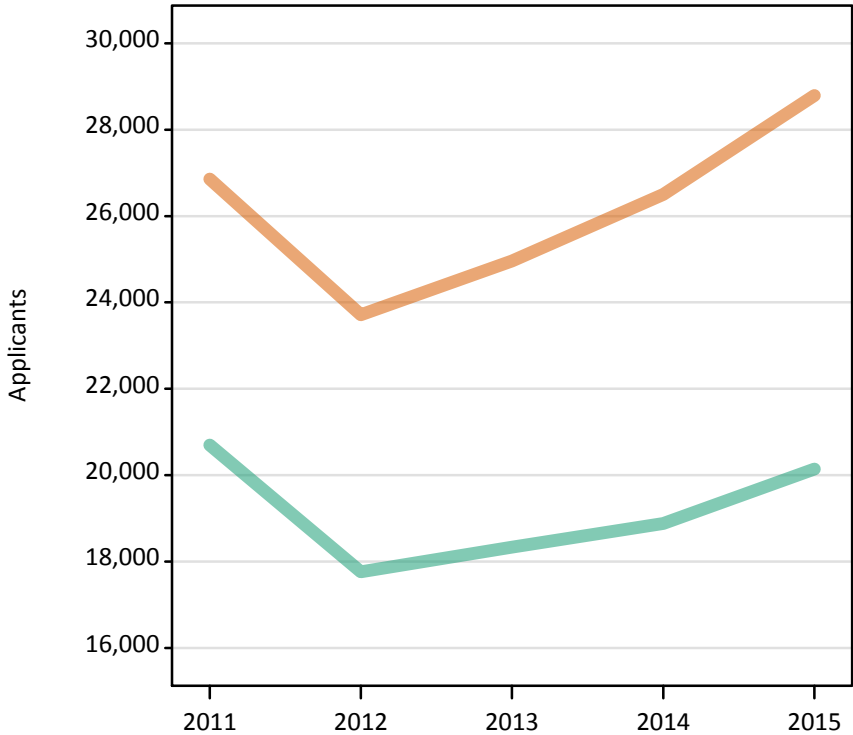
I.2.25 Applicants by sex : EU (excluding UK)
Difference between cycle and 2014 cycle

Men
Women



I.2.26 Applicants by sex : EU (excluding UK)

Men
Women



I.2.27 Applicants by age and sex : EU (excluding UK)

Age group and sex of applicant		2011	2012	2013	2014	2015
Under 18	Women	1,920	1,880	1,910	2,180	2,400
	Men	1,160	1,070	1,200	1,270	1,530
18	Women	8,350	7,880	8,340	8,890	10,030
	Men	5,400	5,360	5,530	5,980	6,660
19	Women	7,760	6,960	7,390	7,920	8,490
	Men	6,150	5,220	5,500	5,490	5,890
20-24	Women	7,410	5,860	6,200	6,360	6,650
	Men	6,620	5,070	5,100	5,250	5,080
25-29	Women	1,020	770	770	790	850
	Men	970	680	650	600	700
30-34	Women	250	210	200	190	200
	Men	240	200	190	170	160
35 and over	Women	160	160	140	180	180
	Men	160	150	160	140	130
All ages	Women	26,860	23,710	24,960	26,500	28,790
	Men	20,700	17,760	18,330	18,880	20,140

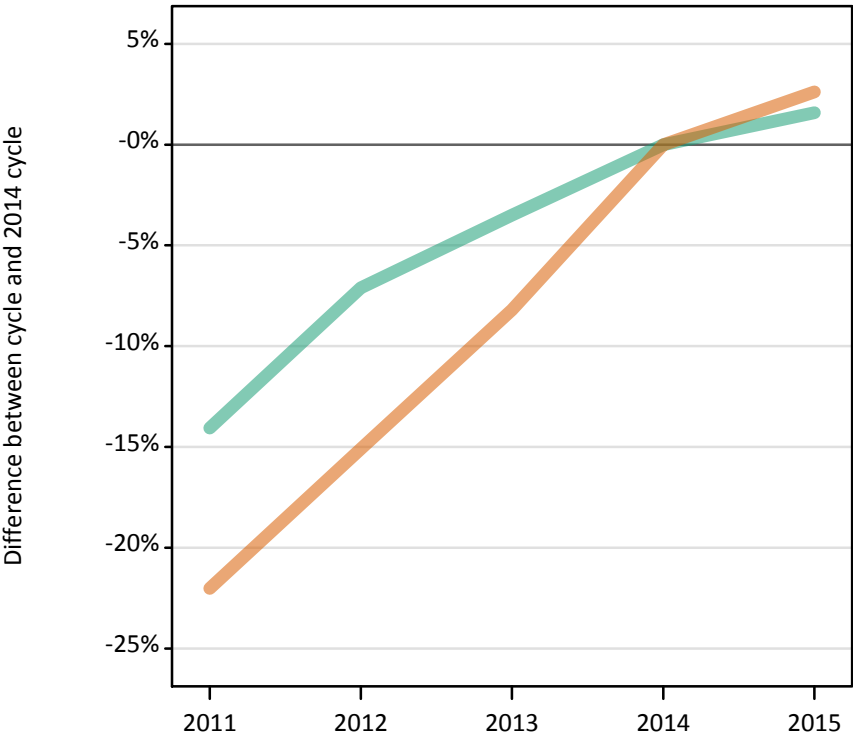
I.2.28 Applicants by age and sex : EU (excluding UK)

Difference between cycle and 2014 cycle

Age group and sex of applicant		2011	2012	2013	2014	2015
Under 18	Women	-12%	-14%	-12%	0%	10%
	Men	-9%	-16%	-5%	0%	20%
18	Women	-6%	-11%	-6%	0%	13%
	Men	-10%	-10%	-7%	0%	12%
19	Women	-2%	-12%	-7%	0%	7%
	Men	12%	-5%	0%	0%	7%
20-24	Women	17%	-8%	-3%	0%	5%
	Men	26%	-3%	-3%	0%	-3%
25-29	Women	28%	-3%	-2%	0%	7%
	Men	62%	14%	9%	0%	17%
30-34	Women	33%	10%	9%	0%	5%
	Men	40%	21%	14%	0%	-7%
35 and over	Women	-8%	-7%	-20%	0%	4%
	Men	18%	13%	19%	0%	-5%
All ages	Women	1%	-11%	-6%	0%	9%
	Men	10%	-6%	-3%	0%	7%

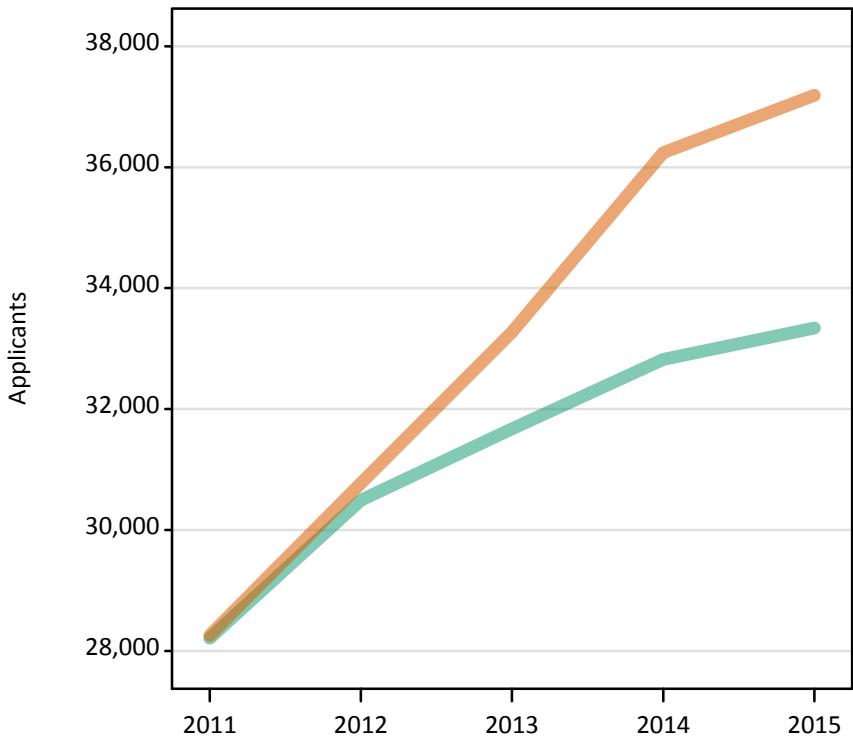
I.2.29 Applicants by sex : Not EU
Difference between cycle and 2014 cycle

Men
Women



I.2.30 Applicants by sex : Not EU

Men
Women



I.2.31 Applicants by age and sex : Not EU

Age group and sex of applicant		2011	2012	2013	2014	2015
Under 18	Women	1,960	2,340	2,720	3,150	3,030
	Men	1,800	2,260	2,570	2,820	2,800
18	Women	8,670	9,830	11,320	12,350	13,190
	Men	7,770	8,810	9,770	10,500	11,290
19	Women	7,510	8,140	8,430	9,380	9,420
	Men	6,830	7,220	7,400	7,870	7,900
20-24	Women	8,450	8,900	9,240	9,790	9,810
	Men	9,580	10,010	9,930	9,740	9,500
25-29	Women	1,060	970	1,000	1,020	1,140
	Men	1,440	1,390	1,310	1,190	1,200
30-34	Women	360	340	320	310	340
	Men	490	470	430	410	400
35 and over	Women	260	250	230	240	260
	Men	300	330	270	280	250
All ages	Women	28,260	30,770	33,270	36,240	37,190
	Men	28,210	30,490	31,670	32,820	33,340

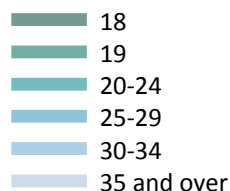
I.2.32 Applicants by age and sex : Not EU

Difference between cycle and 2014 cycle

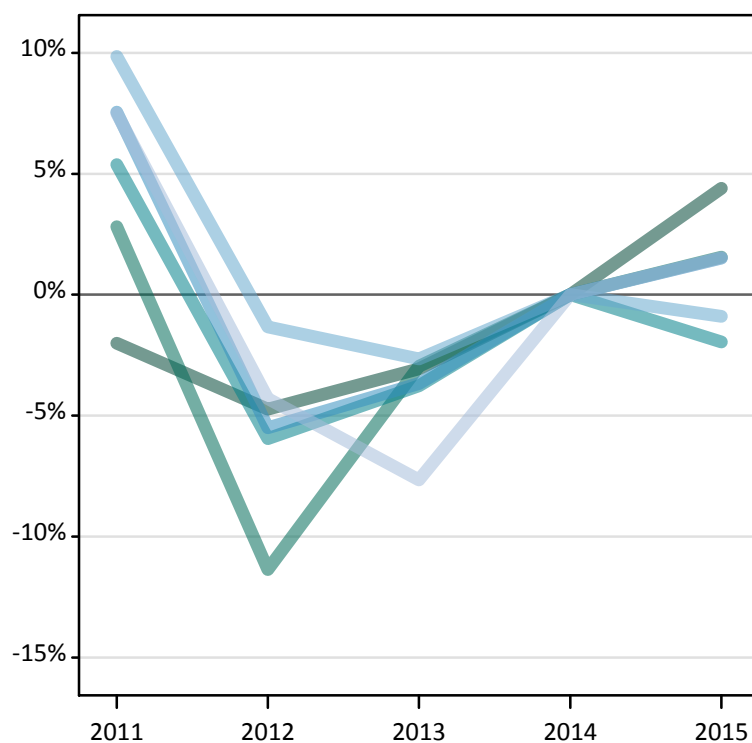
Age group and sex of applicant		2011	2012	2013	2014	2015
Under 18	Women	-38%	-26%	-14%	0%	-4%
	Men	-36%	-20%	-9%	0%	-1%
18	Women	-30%	-20%	-8%	0%	7%
	Men	-26%	-16%	-7%	0%	8%
19	Women	-20%	-13%	-10%	0%	0%
	Men	-13%	-8%	-6%	0%	0%
20-24	Women	-14%	-9%	-6%	0%	0%
	Men	-2%	3%	2%	0%	-2%
25-29	Women	4%	-4%	-2%	0%	13%
	Men	21%	17%	10%	0%	1%
30-34	Women	16%	8%	4%	0%	9%
	Men	20%	14%	4%	0%	-4%
35 and over	Women	8%	3%	-5%	0%	9%
	Men	8%	18%	-2%	0%	-11%
All ages	Women	-22%	-15%	-8%	0%	3%
	Men	-14%	-7%	-3%	0%	2%

I.2.33 Applicants by domicile and age : All domiciles

Difference between cycle and 2014 cycle



Difference between cycle and 2014 cycle



I.2.34 Applicants by domicile and age : All domiciles

Domicile and age group		2011	2012	2013	2014	2015
All domiciles	Under 18	9,100	9,380	10,090	11,140	11,550
	18	297,570	289,300	294,360	303,670	317,020
	19	135,790	117,070	128,180	132,080	134,140
	20-24	138,890	123,960	126,840	131,800	129,220
	25-29	36,420	32,000	32,620	33,870	34,380
	30-34	19,900	17,880	17,640	18,120	17,960
	35 and over	30,470	27,130	26,180	28,350	28,780

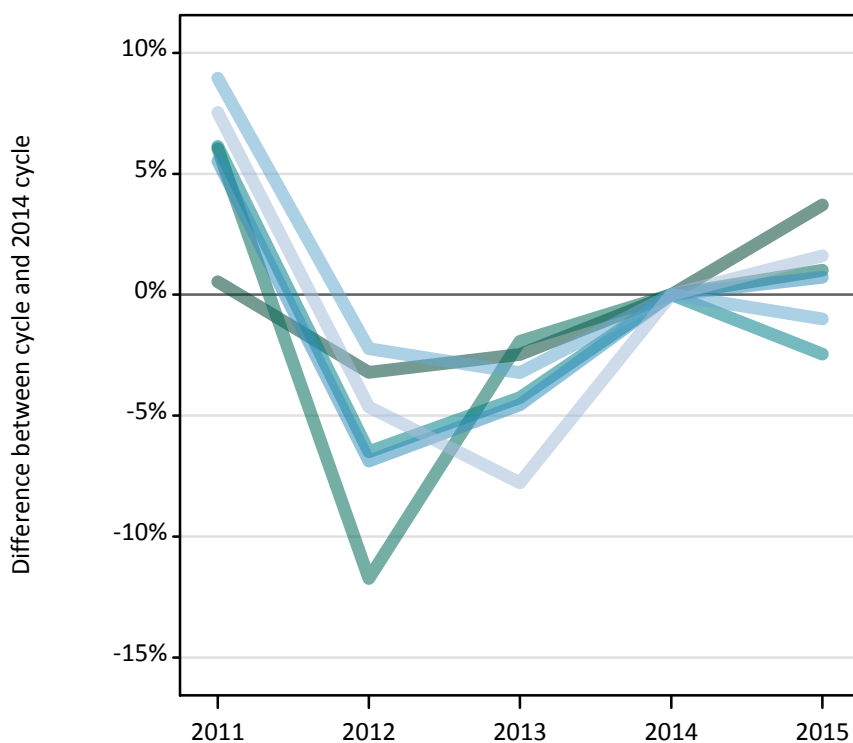
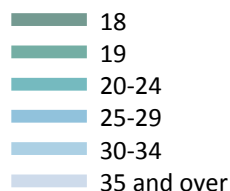
I.2.35 Applicants by domicile and age : All domiciles

Difference between cycle and 2014 cycle

Domicile and age group		2011	2012	2013	2014	2015
All domiciles	Under 18	-18%	-16%	-9%	0%	4%
	18	-2%	-5%	-3%	0%	4%
	19	3%	-11%	-3%	0%	2%
	20-24	5%	-6%	-4%	0%	-2%
	25-29	8%	-6%	-4%	0%	2%
	30-34	10%	-1%	-3%	0%	-1%
	35 and over	7%	-4%	-8%	0%	2%

I.2.36 Applicants by domicile and age : UK

Difference between cycle and 2014 cycle



I.2.37 Applicants by domicile and age : UK

Domicile and age group		2011	2012	2013	2014	2015
UK	Under 18	2,260	1,830	1,680	1,710	1,800
	18	267,390	257,420	259,390	265,960	275,850
	19	107,540	89,520	99,470	101,420	102,450
	20-24	106,830	94,130	96,370	100,660	98,180
	25-29	31,940	28,190	28,900	30,270	30,490
	30-34	18,570	16,660	16,490	17,040	16,870
	35 and over	29,590	26,230	25,370	27,510	27,950

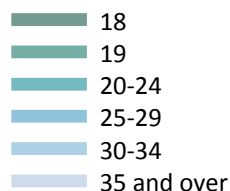
I.2.38 Applicants by domicile and age : UK

Difference between cycle and 2014 cycle

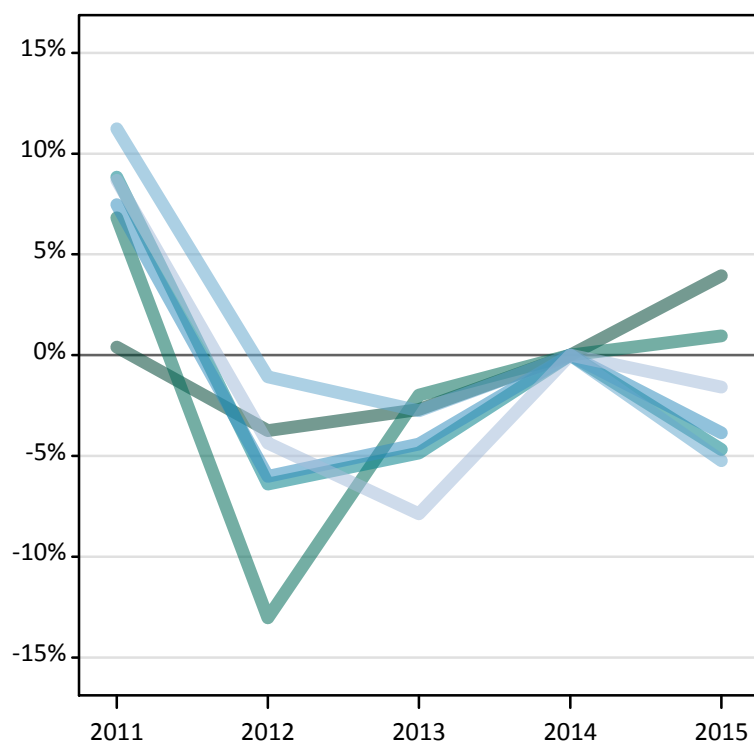
Domicile and age group		2011	2012	2013	2014	2015
UK	Under 18	32%	7%	-2%	0%	5%
	18	1%	-3%	-2%	0%	4%
	19	6%	-12%	-2%	0%	1%
	20-24	6%	-6%	-4%	0%	-2%
	25-29	6%	-7%	-5%	0%	1%
	30-34	9%	-2%	-3%	0%	-1%
	35 and over	8%	-5%	-8%	0%	2%

I.2.39 Applicants by domicile and age : England

Difference between cycle and 2014 cycle



Difference between cycle and 2014 cycle



I.2.40 Applicants by domicile and age : England

Domicile and age group		2011	2012	2013	2014	2015
England	Under 18	1,230	940	910	970	1,020
	18	224,440	215,180	217,540	223,560	232,360
	19	94,500	76,940	86,730	88,470	89,320
	20-24	88,790	76,360	77,620	81,580	77,770
	25-29	26,300	23,000	23,390	24,470	23,530
	30-34	15,760	14,020	13,780	14,170	13,430
	35 and over	25,750	22,660	21,830	23,690	23,320

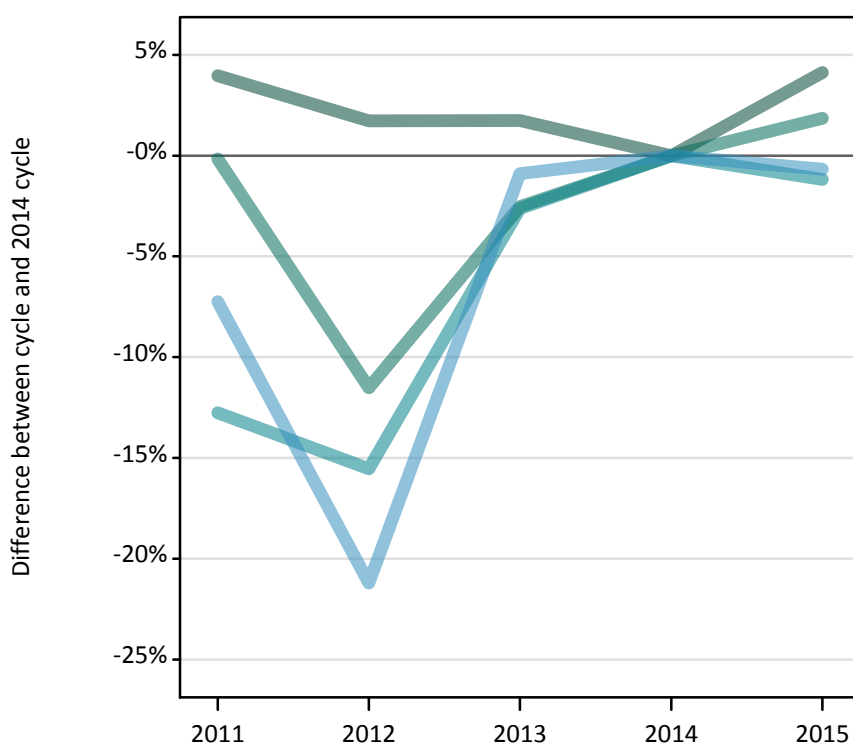
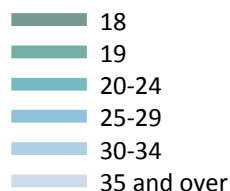
I.2.41 Applicants by domicile and age : England

Difference between cycle and 2014 cycle

Domicile and age group		2011	2012	2013	2014	2015
England	Under 18	27%	-4%	-6%	0%	5%
	18	0%	-4%	-3%	0%	4%
	19	7%	-13%	-2%	0%	1%
	20-24	9%	-6%	-5%	0%	-5%
	25-29	7%	-6%	-4%	0%	-4%
	30-34	11%	-1%	-3%	0%	-5%
	35 and over	9%	-4%	-8%	0%	-2%

I.2.42 Applicants by domicile and age : Northern Ireland

Difference between cycle and 2014 cycle



I.2.43 Applicants by domicile and age : Northern Ireland

Domicile and age group		2011	2012	2013	2014	2015
Northern Ireland	Under 18	50	50	40	30	30
	18	11,960	11,700	11,700	11,500	11,980
	19	3,110	2,760	3,040	3,120	3,170
	20-24	3,420	3,310	3,820	3,920	3,870
	25-29	830	710	890	900	890
	30-34	290	290	370	390	420
	35 and over	380	340	440	450	440

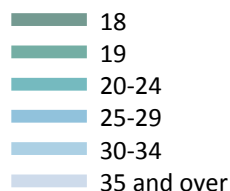
I.2.44 Applicants by domicile and age : Northern Ireland

Difference between cycle and 2014 cycle

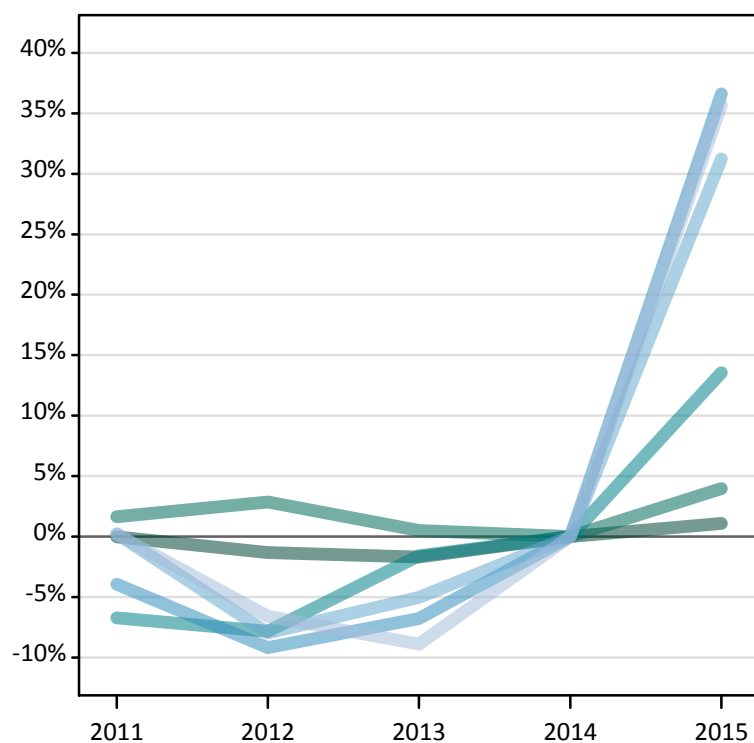
Domicile and age group		2011	2012	2013	2014	2015
Northern Ireland	Under 18	71%	79%	32%	0%	18%
	18	4%	2%	2%	0%	4%
	19	-0%	-12%	-3%	0%	2%
	20-24	-13%	-16%	-3%	0%	-1%
	25-29	-7%	-21%	-1%	0%	-1%
	30-34	-25%	-26%	-4%	0%	9%
	35 and over	-16%	-25%	-2%	0%	-2%

I.2.45 Applicants by domicile and age : Scotland

Difference between cycle and 2014 cycle



Difference between cycle and 2014 cycle



I.2.46 Applicants by domicile and age : Scotland

Domicile and age group		2011	2012	2013	2014	2015
Scotland	Under 18	930	810	690	680	730
	18	19,350	19,100	19,030	19,360	19,570
	19	5,620	5,690	5,550	5,530	5,750
	20-24	10,120	10,000	10,680	10,850	12,320
	25-29	3,290	3,110	3,200	3,430	4,680
	30-34	1,740	1,590	1,650	1,730	2,270
	35 and over	2,340	2,180	2,130	2,340	3,170

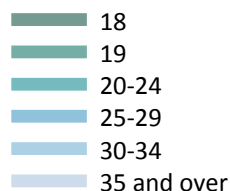
I.2.47 Applicants by domicile and age : Scotland

Difference between cycle and 2014 cycle

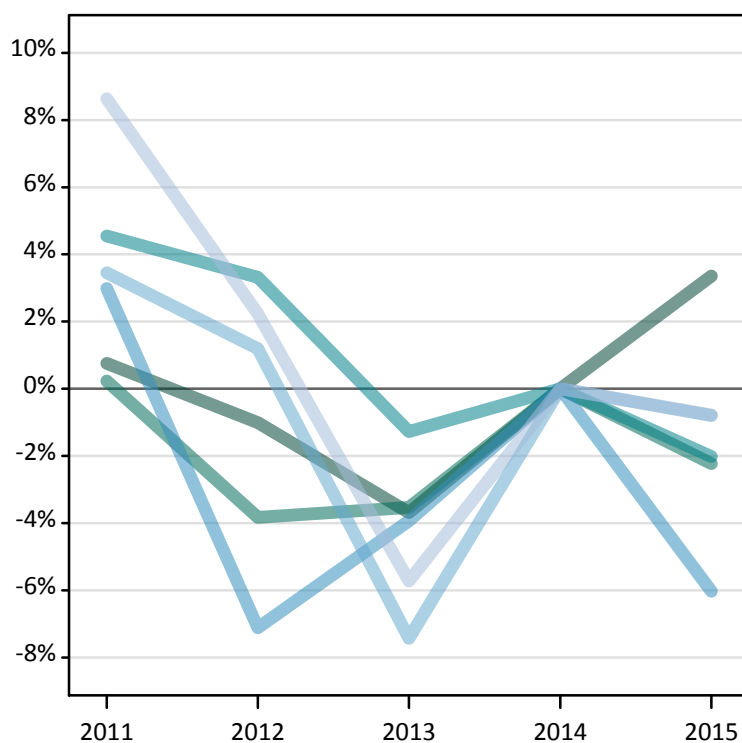
Domicile and age group		2011	2012	2013	2014	2015
Scotland	Under 18	36%	19%	1%	0%	7%
	18	-0%	-1%	-2%	0%	1%
	19	2%	3%	0%	0%	4%
	20-24	-7%	-8%	-2%	0%	14%
	25-29	-4%	-9%	-7%	0%	37%
	30-34	0%	-8%	-5%	0%	31%
	35 and over	0%	-7%	-9%	0%	36%

I.2.48 Applicants by domicile and age : Wales

Difference between cycle and 2014 cycle



Difference between cycle and 2014 cycle



I.2.49 Applicants by domicile and age : Wales

Domicile and age group		2011	2012	2013	2014	2015
Wales	Under 18	50	30	50	30	20
	18	11,630	11,430	11,120	11,540	11,930
	19	4,320	4,140	4,150	4,310	4,210
	20-24	4,510	4,460	4,260	4,310	4,230
	25-29	1,520	1,370	1,420	1,480	1,390
	30-34	780	760	700	750	750
	35 and over	1,120	1,050	970	1,030	1,020

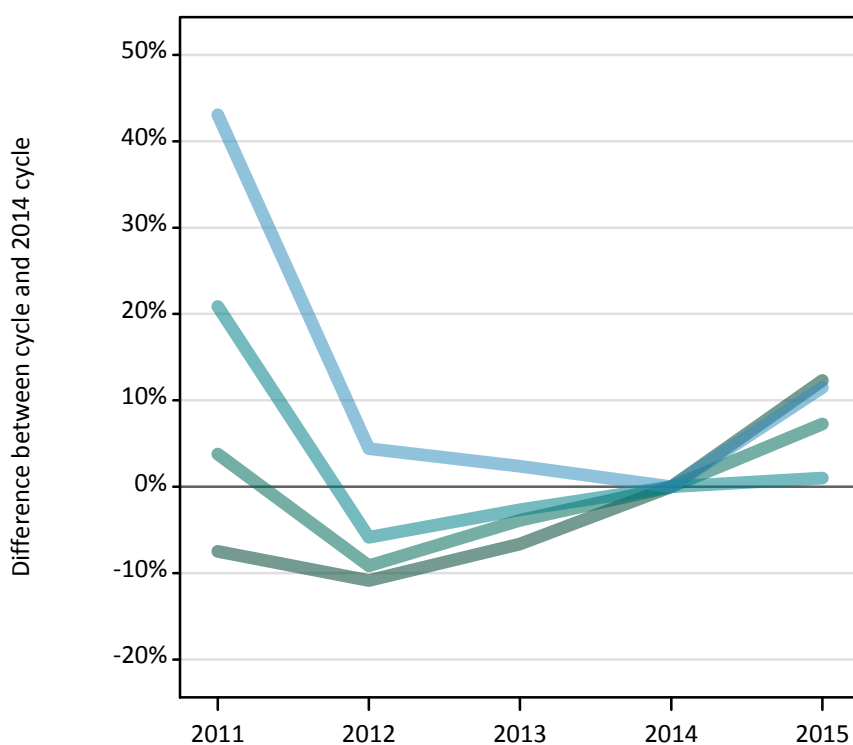
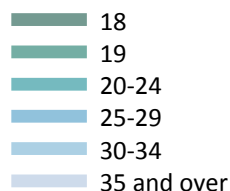
I.2.50 Applicants by domicile and age : Wales

Difference between cycle and 2014 cycle

Domicile and age group		2011	2012	2013	2014	2015
Wales	Under 18	70%	-7%	50%	0%	-20%
	18	1%	-1%	-4%	0%	3%
	19	0%	-4%	-4%	0%	-2%
	20-24	5%	3%	-1%	0%	-2%
	25-29	3%	-7%	-4%	0%	-6%
	30-34	3%	1%	-7%	0%	-1%
	35 and over	9%	2%	-6%	0%	-1%

I.2.51 Applicants by domicile and age : EU (excluding UK)

Difference between cycle and 2014 cycle



I.2.52 Applicants by domicile and age : EU (excluding UK)

Domicile and age group		2011	2012	2013	2014	2015
EU (excluding UK)	Under 18	3,080	2,950	3,120	3,460	3,920
	18	13,750	13,250	13,880	14,860	16,690
	19	13,920	12,180	12,890	13,410	14,380
	20-24	14,030	10,930	11,300	11,610	11,730
	25-29	1,980	1,450	1,420	1,390	1,550
	30-34	480	410	390	360	350
	35 and over	320	320	300	310	310

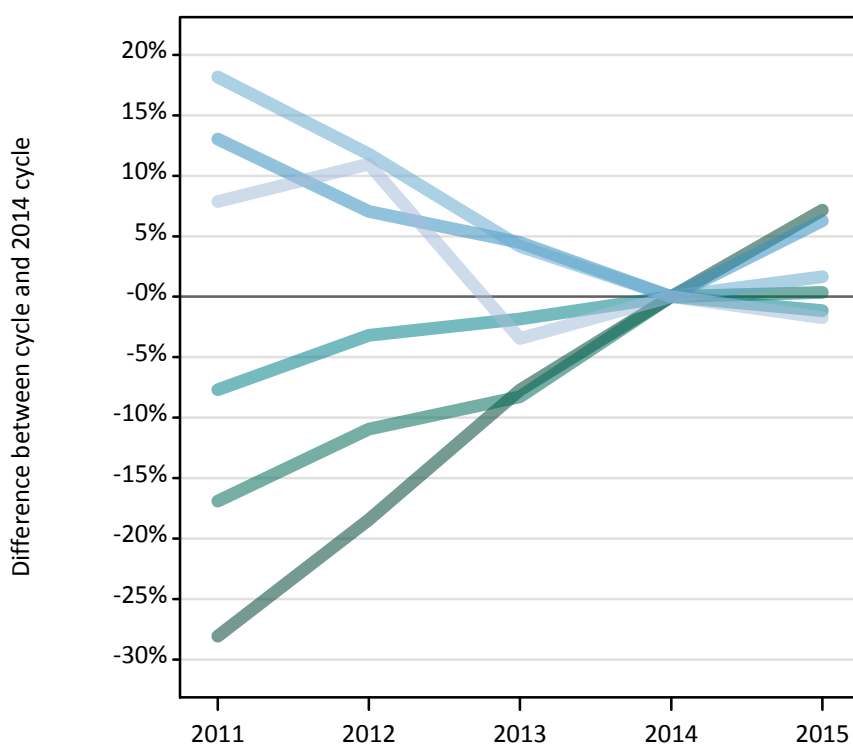
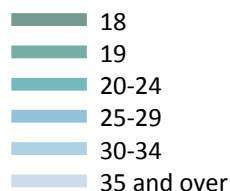
I.2.53 Applicants by domicile and age : EU (excluding UK)

Difference between cycle and 2014 cycle

Domicile and age group		2011	2012	2013	2014	2015
EU (excluding UK)	Under 18	-11%	-15%	-10%	0%	14%
	18	-7%	-11%	-7%	0%	12%
	19	4%	-9%	-4%	0%	7%
	20-24	21%	-6%	-3%	0%	1%
	25-29	43%	4%	2%	0%	11%
	30-34	36%	15%	11%	0%	-1%
	35 and over	3%	1%	-3%	0%	0%

I.2.54 Applicants by domicile and age : Not EU

Difference between cycle and 2014 cycle



I.2.55 Applicants by domicile and age : Not EU

Domicile and age group		2011	2012	2013	2014	2015
Not EU	Under 18	3,760	4,600	5,290	5,970	5,830
	18	16,430	18,630	21,090	22,850	24,490
	19	14,340	15,360	15,830	17,260	17,310
	20-24	18,030	18,910	19,170	19,530	19,310
	25-29	2,500	2,370	2,310	2,210	2,350
	30-34	850	810	750	720	730
	35 and over	560	580	500	520	510

I.2.56 Applicants by domicile and age : Not EU

Difference between cycle and 2014 cycle

Domicile and age group		2011	2012	2013	2014	2015
Not EU	Under 18	-37%	-23%	-11%	0%	-2%
	18	-28%	-18%	-8%	0%	7%
	19	-17%	-11%	-8%	0%	0%
	20-24	-8%	-3%	-2%	0%	-1%
	25-29	13%	7%	4%	0%	6%
	30-34	18%	12%	4%	0%	2%
	35 and over	8%	11%	-3%	0%	-2%

I.2.57 Technical notes and definitions

Applicants have been able to submit applications for all 2015 courses since early September.

People who submit their applications to UCAS by the January deadline are considered 'on time' applicants for the large majority of courses offered through UCAS. Some art and design courses have a later deadline of 24 March. By definition all main scheme applications have been received by the 30 June deadline.

In 2015, a set of courses relating to teacher training that historically would only have been available through UCAS Teacher Training, and therefore not previously counted in the scope of this statistical release, were brought into the undergraduate UCAS scheme. These additional courses are all offered by providers based in Scotland and are in the JACS3 detailed subject reporting grouping of 'X1 - Training Teachers'.

The large majority of applications to the additional courses are from applicants living in Scotland and the increase indicated in Scottish domiciled applicants during the 2015 cycle is substantially a result of these changes.

To help comparisons through time, additional tables are available on the UCAS website that exclude any applications made by applicants to subject group 'X1' at Scottish providers. These tables provide a better 'like for like' comparison particularly when considering Scottish domiciled applicants and Scottish providers.

Counts of the number of applicants reported have been rounded to the nearest 10 applicants, this may result in instances where totals do not equal the sum of the components. Proportional changes have been rounded to the nearest whole percentage point.

Age

This statistical release uses country-specific age definitions which align with the cut off points for school/college cohorts within the different administrations of the UK. For England and Wales ages are defined on the 31 August, for Northern Ireland on the 1 July and for Scotland on the 28 February the following year. Defining ages in this way matches the assignment of children to school cohorts. For applicants outside of the UK the cohort cut off for England and Wales has been used.

Applicant

A person who has made an application in the UCAS system during the cycle reported (including applications for deferred entry). Records of prior acceptance (RPAs) are excluded.

Application

An application to a course at a provider made by an applicant in the UCAS main scheme. Applicants may make up to five main scheme applications.

Country of provider

An applicant may be counted once for each provider country they have applied to in the main scheme. If an applicant has applied to providers in multiple countries then the applicant is counted once within each country of provider applied to.

This statistical release excludes a small number of applications to a provider based in the EU.

Domicile

Declared area of permanent residence. The Channel Islands and the Isle of Man have been assigned as 'Not EU'.

First time applicant

An applicant that did not apply to the UCAS scheme in the previous cycle.

Main scheme

The main UCAS application scheme through which up to five providers/courses can be applied to. This opens in September and closes to new applications on 30 June the following year.

Reapplicant

An applicant that applied to the UCAS scheme in the previous cycle.

I.2.58 Technical notes and definitions: continued

Subject group

The JACS3 classification used to classify courses into subject groups.

Tariff group of provider

Providers are grouped as higher, medium or lower tariff based on their average levels of attainment of their accepted applicants (summarised through UCAS Tariff points) in recent cycles. Each group of providers accounted for around a third of all UK 18 year old acceptances in recent cycles.