

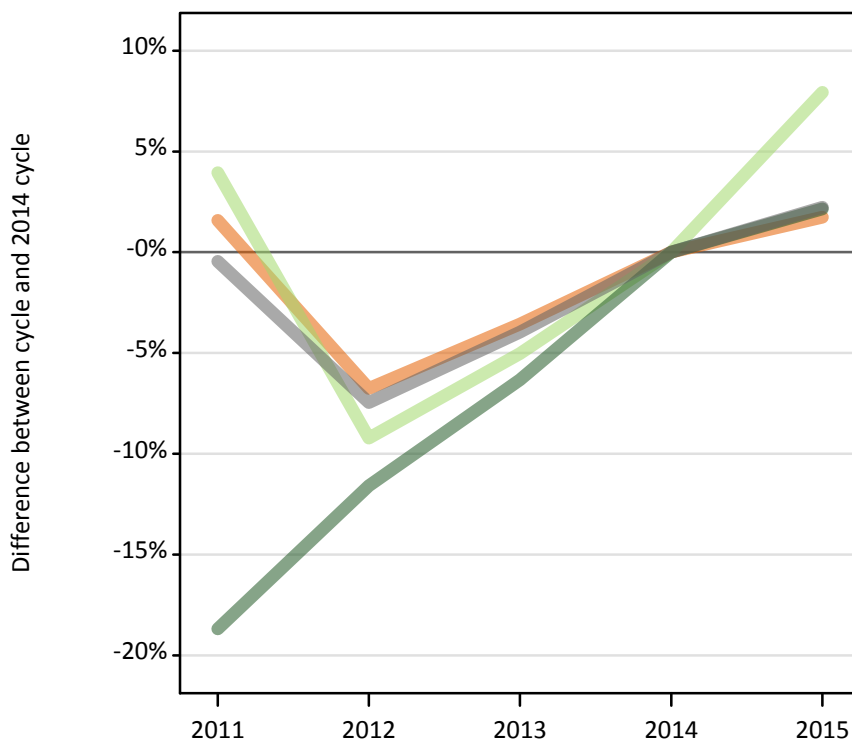
# June Deadline Analysis: Reapplicants

## Applicants by reapplication status at the 30 June deadline

### I.3.1 First-time applicants by domicile group

Difference between cycle and 2014 cycle

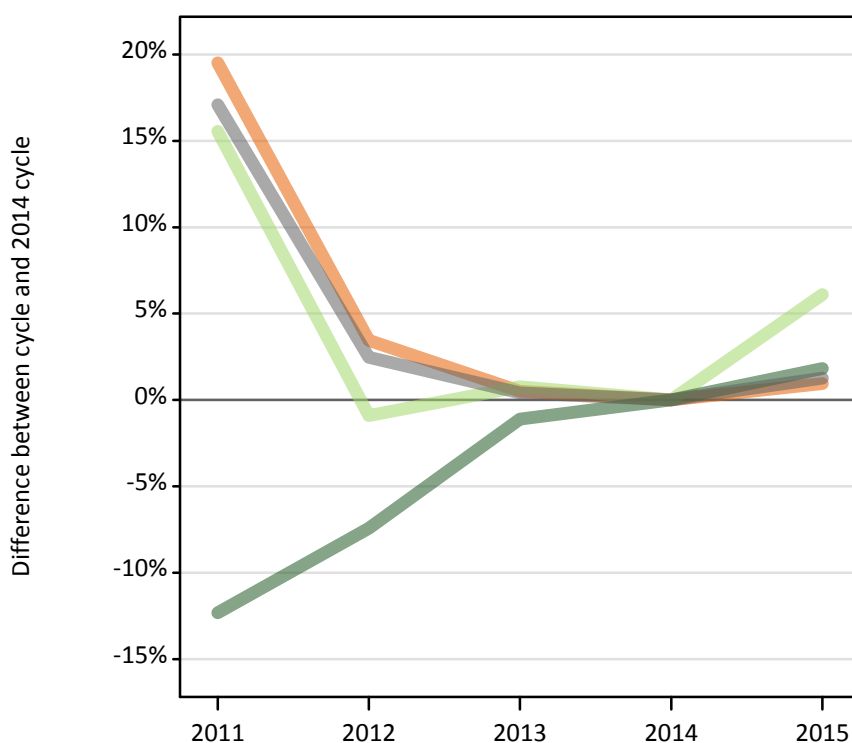
- UK
- EU (excluding UK)
- Not EU
- All domiciles



### I.3.2 Previously applied applicants by domicile group

Difference between cycle and 2014 cycle

- UK
- EU (excluding UK)
- Not EU
- All domiciles



### I.3.3 Applicants by whether previously applied and domicile group

Applicant status and domicile group		2011	2012	2013	2014	2015
First-time applicant	UK	491,260	450,910	466,400	483,620	492,040
	EU (excluding UK)	43,740	38,200	39,960	42,080	45,420
	Not EU	52,180	56,730	60,110	64,170	65,550
	All domiciles	587,180	545,840	566,470	589,870	603,010
Previously applied	UK	72,860	63,070	61,280	60,960	61,550
	EU (excluding UK)	3,820	3,280	3,330	3,310	3,510
	Not EU	4,290	4,520	4,830	4,890	4,980
	All domiciles	80,970	70,870	69,440	69,160	70,030
All	UK	564,120	513,970	527,670	544,580	553,590
	EU (excluding UK)	47,560	41,480	43,290	45,380	48,930
	Not EU	56,470	61,260	64,940	69,060	70,530
	All domiciles	668,150	616,700	635,910	659,030	673,040

### I.3.4 Applicants by whether previously applied and domicile group

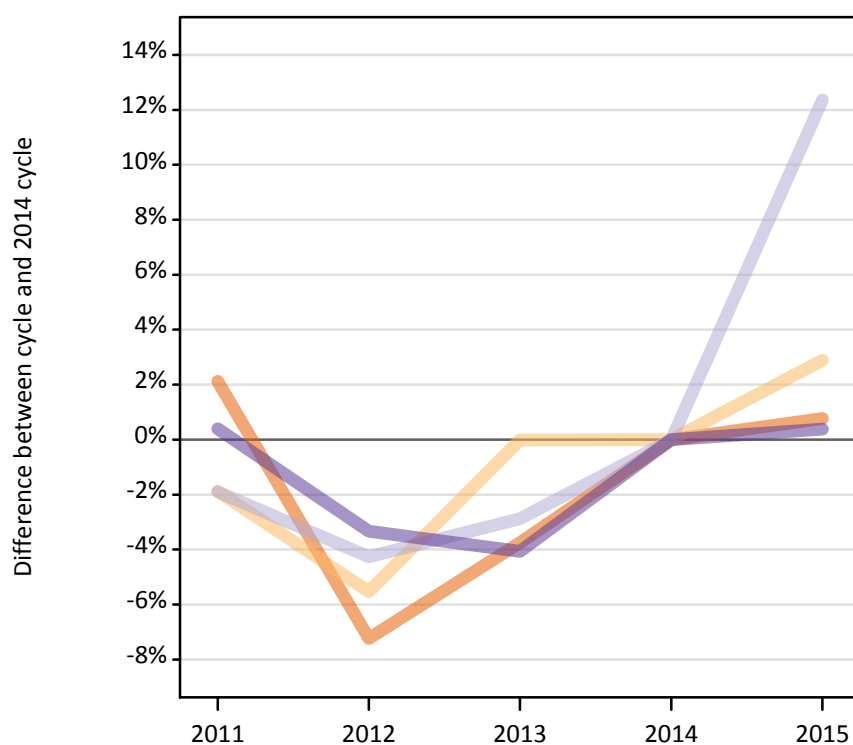
Difference between cycle and 2014 cycle

Applicant status and domicile group		2011	2012	2013	2014	2015
First-time applicant	UK	2%	-7%	-4%	0%	2%
	EU (excluding UK)	4%	-9%	-5%	0%	8%
	Not EU	-19%	-12%	-6%	0%	2%
	All domiciles	-0%	-7%	-4%	0%	2%
Previously applied	UK	20%	3%	1%	0%	1%
	EU (excluding UK)	16%	-1%	1%	0%	6%
	Not EU	-12%	-7%	-1%	0%	2%
	All domiciles	17%	2%	0%	0%	1%
All	UK	4%	-6%	-3%	0%	2%
	EU (excluding UK)	5%	-9%	-5%	0%	8%
	Not EU	-18%	-11%	-6%	0%	2%
	All domiciles	1%	-6%	-4%	0%	2%

### I.3.5 First-time applicants by UK country of domicile

Difference between cycle and 2014 cycle

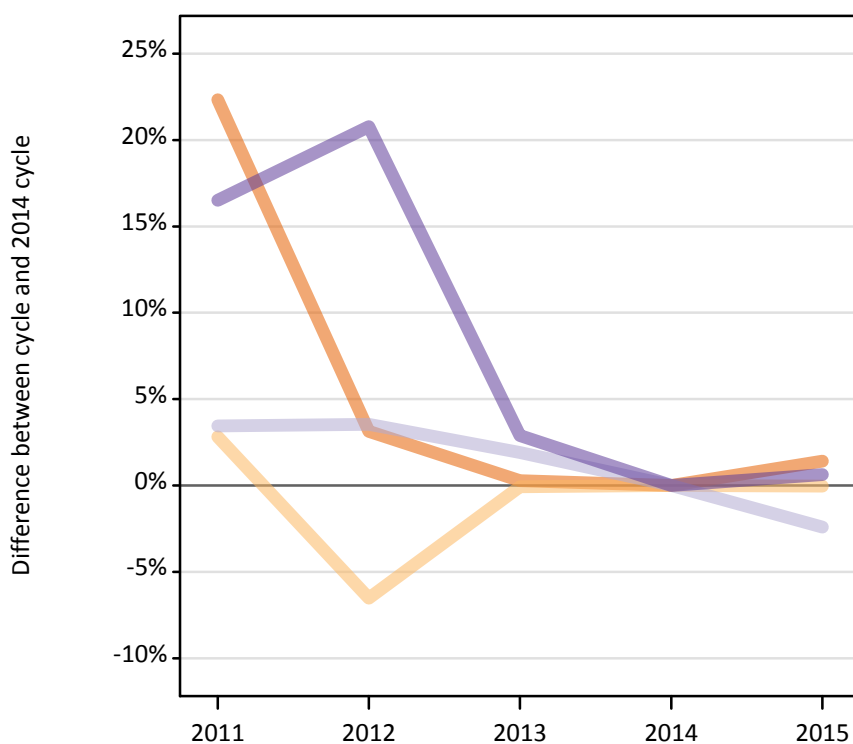
- England
- Northern Ireland
- Scotland
- Wales



### I.3.6 Previously applied applicants by UK country of domicile

Difference between cycle and 2014 cycle

- England
- Northern Ireland
- Scotland
- Wales



### I.3.7 Applicants by first-time and previously applied and UK country of domicile

Applicant status and domicile group		2011	2012	2013	2014	2015
First-time applicant	England	415,170	377,170	391,300	406,560	409,680
	Northern Ireland	17,450	16,800	17,780	17,780	18,290
	Scotland	37,460	36,550	37,080	38,180	42,900
	Wales	21,180	20,390	20,240	21,100	21,180
	UK	491,260	450,910	466,400	483,620	492,040
Previously applied	England	61,600	51,930	50,490	50,360	51,070
	Northern Ireland	2,590	2,350	2,520	2,520	2,520
	Scotland	5,930	5,940	5,840	5,730	5,600
	Wales	2,740	2,840	2,420	2,360	2,370
	UK	72,860	63,070	61,280	60,960	61,550
All	England	476,770	429,100	441,790	456,920	460,740
	Northern Ireland	20,030	19,150	20,290	20,300	20,810
	Scotland	43,390	42,490	42,930	43,910	48,490
	Wales	23,920	23,240	22,660	23,450	23,550
	UK	564,120	513,970	527,670	544,580	553,590

### I.3.8 Applicants by first-time and previously applied and UK country of domicile

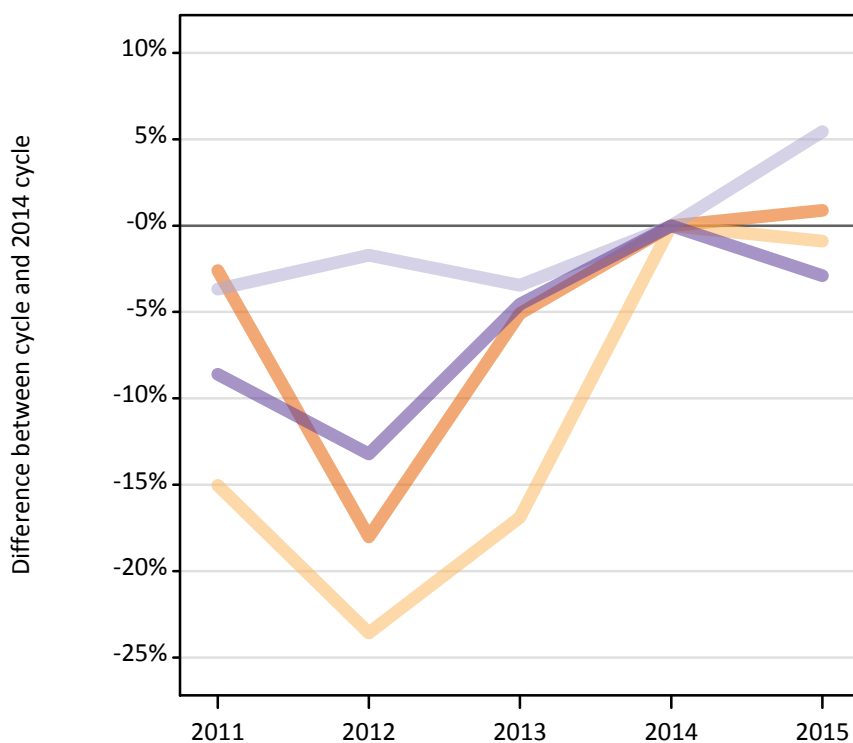
Difference between cycle and 2014 cycle

Applicant status and domicile group		2011	2012	2013	2014	2015
First-time applicant	England	2%	-7%	-4%	0%	1%
	Northern Ireland	-2%	-6%	-0%	0%	3%
	Scotland	-2%	-4%	-3%	0%	12%
	Wales	0%	-3%	-4%	0%	0%
	UK	2%	-7%	-4%	0%	2%
Previously applied	England	22%	3%	0%	0%	1%
	Northern Ireland	3%	-7%	-0%	0%	-0%
	Scotland	3%	4%	2%	0%	-2%
	Wales	17%	21%	3%	0%	1%
	UK	20%	3%	1%	0%	1%
All	England	4%	-6%	-3%	0%	1%
	Northern Ireland	-1%	-6%	-0%	0%	3%
	Scotland	-1%	-3%	-2%	0%	10%
	Wales	2%	-1%	-3%	0%	0%
	UK	4%	-6%	-3%	0%	2%

### I.3.9 19 year old first-time applicants by UK country of domicile

Difference between cycle and 2014 cycle

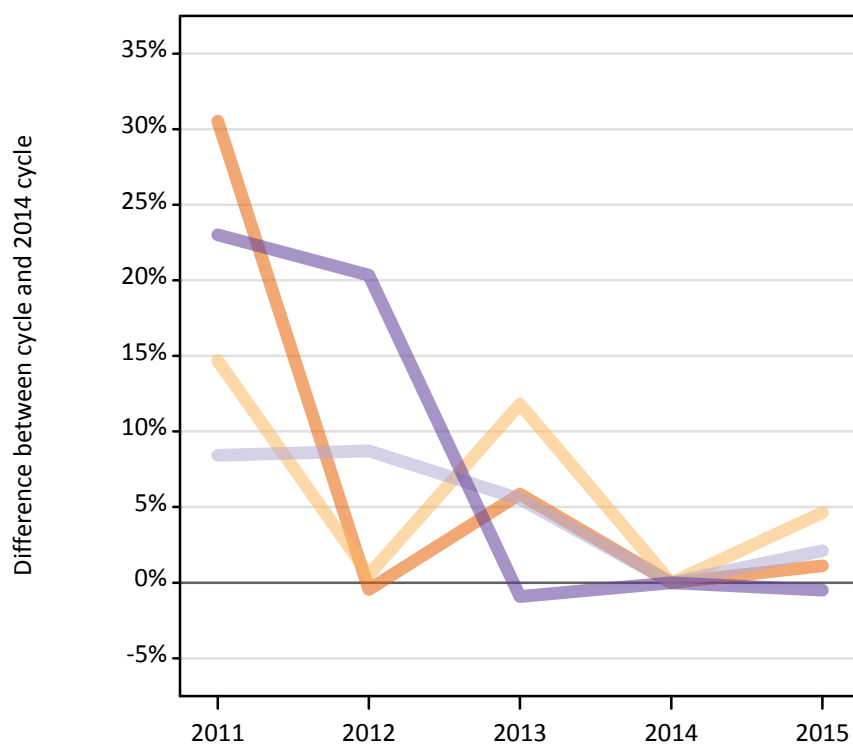
- England
- Northern Ireland
- Scotland
- Wales



### I.3.10 19 year old previously applied applicants by UK country of domicile

Difference between cycle and 2014 cycle

- England
- Northern Ireland
- Scotland
- Wales



### I.3.11 19 year old applicants by first-time and previously applied and UK country of domicile

Applicant status and domicile group		2011	2012	2013	2014	2015
First-time applicant	England	61,700	51,930	60,120	63,350	63,910
	Northern Ireland	1,320	1,190	1,290	1,560	1,540
	Scotland	2,990	3,050	3,000	3,110	3,270
	Wales	2,830	2,690	2,960	3,100	3,010
	UK	68,850	58,860	67,380	71,110	71,740
Previously applied	England	32,800	25,020	26,600	25,130	25,410
	Northern Ireland	1,790	1,570	1,740	1,560	1,630
	Scotland	2,630	2,630	2,560	2,420	2,470
	Wales	1,480	1,450	1,190	1,200	1,200
	UK	38,700	30,670	32,090	30,310	30,710
All	England	94,500	76,940	86,730	88,470	89,320
	Northern Ireland	3,110	2,760	3,040	3,120	3,170
	Scotland	5,620	5,690	5,550	5,530	5,750
	Wales	4,320	4,140	4,150	4,310	4,210
	UK	107,540	89,520	99,470	101,420	102,450

### I.3.12 19 year old applicants by first-time and previously applied and UK country of domicile

Difference between cycle and 2014 cycle

Applicant status and domicile group		2011	2012	2013	2014	2015
First-time applicant	England	-3%	-18%	-5%	0%	1%
	Northern Ireland	-15%	-24%	-17%	0%	-1%
	Scotland	-4%	-2%	-3%	0%	5%
	Wales	-9%	-13%	-5%	0%	-3%
	UK	-3%	-17%	-5%	0%	1%
Previously applied	England	31%	-0%	6%	0%	1%
	Northern Ireland	15%	1%	12%	0%	5%
	Scotland	8%	9%	6%	0%	2%
	Wales	23%	20%	-1%	0%	-0%
	UK	28%	1%	6%	0%	1%
All	England	7%	-13%	-2%	0%	1%
	Northern Ireland	-0%	-12%	-3%	0%	2%
	Scotland	2%	3%	0%	0%	4%
	Wales	0%	-4%	-4%	0%	-2%
	UK	6%	-12%	-2%	0%	1%

### I.3.13 Technical notes and definitions

Applicants have been able to submit applications for all 2015 courses since early September.

People who submit their applications to UCAS by the January deadline are considered 'on time' applicants for the large majority of courses offered through UCAS. Some art and design courses have a later deadline of 24 March. By definition all main scheme applications have been received by the 30 June deadline.

In 2015, a set of courses relating to teacher training that historically would only have been available through UCAS Teacher Training, and therefore not previously counted in the scope of this statistical release, were brought into the undergraduate UCAS scheme. These additional courses are all offered by providers based in Scotland and are in the JACS3 detailed subject reporting grouping of 'X1 - Training Teachers'.

The large majority of applications to the additional courses are from applicants living in Scotland and the increase indicated in Scottish domiciled applicants during the 2015 cycle is substantially a result of these changes.

To help comparisons through time, additional tables are available on the UCAS website that exclude any applications made by applicants to subject group 'X1' at Scottish providers. These tables provide a better 'like for like' comparison particularly when considering Scottish domiciled applicants and Scottish providers.

Counts of the number of applicants reported have been rounded to the nearest 10 applicants, this may result in instances where totals do not equal the sum of the components. Proportional changes have been rounded to the nearest whole percentage point.

#### Age

This statistical release uses country-specific age definitions which align with the cut off points for school/college cohorts within the different administrations of the UK. For England and Wales ages are defined on the 31 August, for Northern Ireland on the 1 July and for Scotland on the 28 February the following year. Defining ages in this way matches the assignment of children to school cohorts. For applicants outside of the UK the cohort cut off for England and Wales has been used.

#### Applicant

A person who has made an application in the UCAS system during the cycle reported (including applications for deferred entry). Records of prior acceptance (RPAs) are excluded.

#### Application

An application to a course at a provider made by an applicant in the UCAS main scheme. Applicants may make up to five main scheme applications.

#### Country of provider

An applicant may be counted once for each provider country they have applied to in the main scheme. If an applicant has applied to providers in multiple countries then the applicant is counted once within each country of provider applied to.

This statistical release excludes a small number of applications to a provider based in the EU.

#### Domicile

Declared area of permanent residence. The Channel Islands and the Isle of Man have been assigned as 'Not EU'.

#### First time applicant

An applicant that did not apply to the UCAS scheme in the previous cycle.

#### Main scheme

The main UCAS application scheme through which up to five providers/courses can be applied to. This opens in September and closes to new applications on 30 June the following year.

#### Reapplicant

An applicant that applied to the UCAS scheme in the previous cycle.

### **I.3.14 Technical notes and definitions: continued**

#### **Subject group**

The JACS3 classification used to classify courses into subject groups.

#### **Tariff group of provider**

Providers are grouped as higher, medium or lower tariff based on their average levels of attainment of their accepted applicants (summarised through UCAS Tariff points) in recent cycles. Each group of providers accounted for around a third of all UK 18 year old acceptances in recent cycles.