

Applicants by sex and age at the 30 June deadline (No Scot. X1)

IX.2.1 Applicants by sex : All domiciles

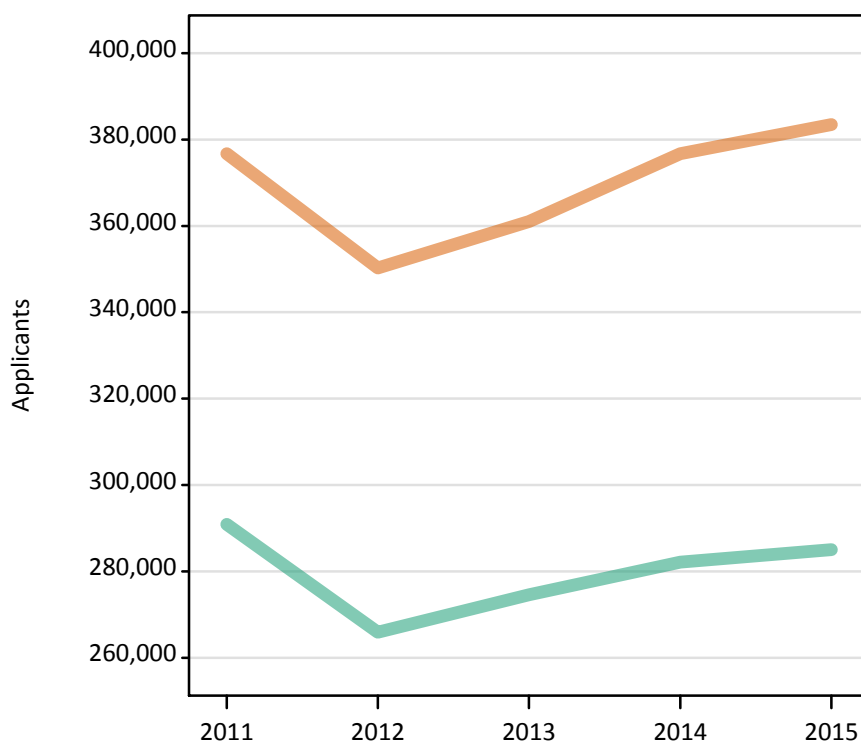
Difference between cycle and 2014 cycle

Men
Women



IX.2.2 Applicants by sex : All domiciles

Men
Women



IX.2.3 Applicants by age and sex : All domiciles

Age group and sex of applicant		2011	2012	2013	2014	2015
Under 18	Women	5,210	5,250	5,570	6,330	6,450
	Men	3,880	4,110	4,510	4,810	5,100
18	Women	165,130	161,740	164,440	169,650	179,130
	Men	132,170	127,270	129,780	133,980	137,830
19	Women	73,260	63,520	69,440	72,310	73,340
	Men	62,460	53,440	58,710	59,750	60,780
20-24	Women	75,720	68,370	70,400	74,150	71,560
	Men	63,080	55,510	56,380	57,610	55,830
25-29	Women	22,920	20,430	20,890	22,000	21,510
	Men	13,490	11,550	11,720	11,850	11,460
30-34	Women	13,170	12,100	12,090	12,500	12,150
	Men	6,720	5,770	5,550	5,620	5,320
35 and over	Women	21,350	18,830	18,210	19,800	19,330
	Men	9,100	8,290	7,950	8,540	8,690
All ages	Women	376,750	350,240	361,040	376,740	383,460
	Men	290,910	265,940	274,590	282,140	285,000

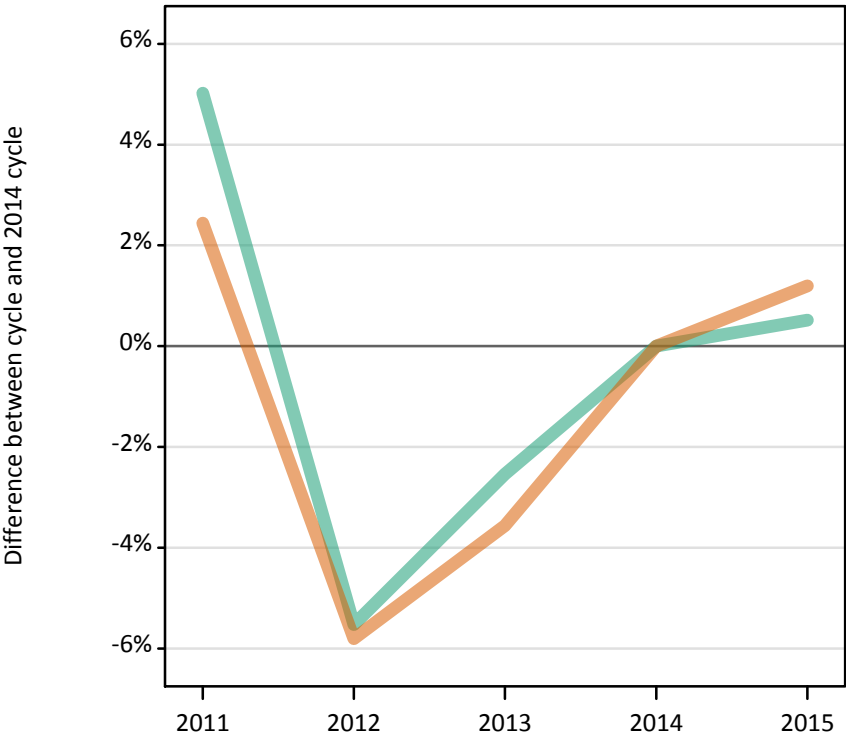
IX.2.4 Applicants by age and sex : All domiciles

Difference between cycle and 2014 cycle

Age group and sex of applicant		2011	2012	2013	2014	2015
Under 18	Women	-18%	-17%	-12%	0%	2%
	Men	-19%	-14%	-6%	0%	6%
18	Women	-3%	-5%	-3%	0%	6%
	Men	-1%	-5%	-3%	0%	3%
19	Women	1%	-12%	-4%	0%	1%
	Men	5%	-11%	-2%	0%	2%
20-24	Women	2%	-8%	-5%	0%	-3%
	Men	10%	-4%	-2%	0%	-3%
25-29	Women	4%	-7%	-5%	0%	-2%
	Men	14%	-3%	-1%	0%	-3%
30-34	Women	5%	-3%	-3%	0%	-3%
	Men	20%	3%	-1%	0%	-5%
35 and over	Women	8%	-5%	-8%	0%	-2%
	Men	7%	-3%	-7%	0%	2%
All ages	Women	0%	-7%	-4%	0%	2%
	Men	3%	-6%	-3%	0%	1%

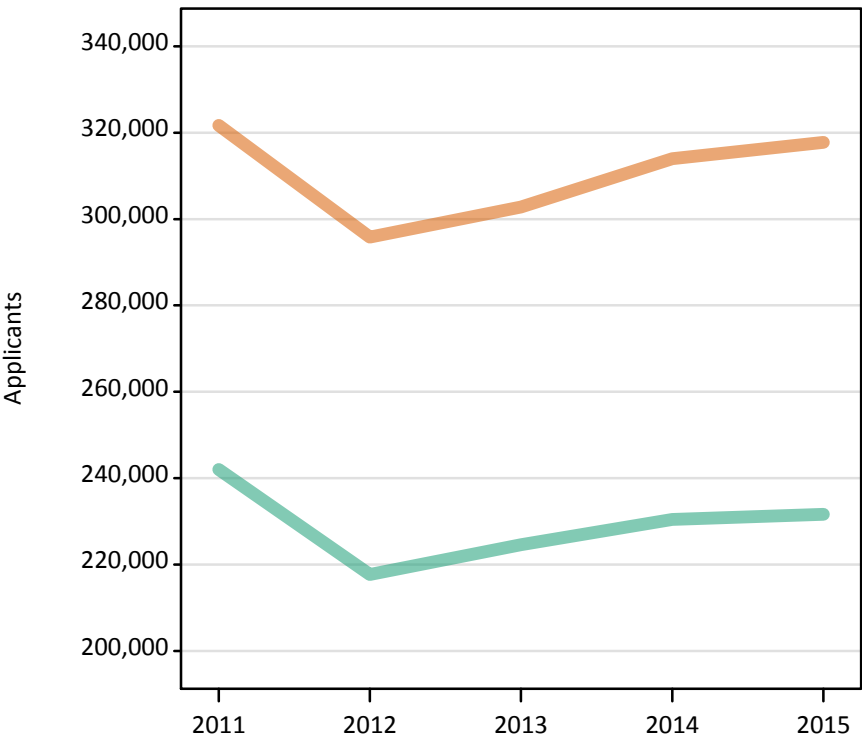
IX.2.5 Applicants by sex : UK
Difference between cycle and 2014 cycle

Men
Women



IX.2.6 Applicants by sex : UK

Men
Women



IX.2.7 Applicants by age and sex : UK

Age group and sex of applicant		2011	2012	2013	2014	2015
Under 18	Women	1,340	1,030	940	1,000	1,020
	Men	910	780	740	710	780
18	Women	148,140	144,050	144,790	148,420	155,920
	Men	119,000	113,110	114,480	117,500	119,870
19	Women	58,000	48,430	53,610	55,010	55,430
	Men	49,480	41,000	45,820	46,390	47,000
20-24	Women	59,860	53,620	54,960	58,000	55,250
	Men	46,890	40,430	41,340	42,620	41,290
25-29	Women	20,850	18,690	19,120	20,200	19,610
	Men	11,080	9,480	9,760	10,060	9,590
30-34	Women	12,560	11,560	11,560	12,000	11,630
	Men	5,990	5,090	4,930	5,040	4,780
35 and over	Women	20,920	18,410	17,840	19,380	18,890
	Men	8,650	7,810	7,520	8,130	8,320
All ages	Women	321,670	295,780	302,820	314,010	317,750
	Men	242,010	217,700	224,590	230,440	231,630

IX.2.8 Applicants by age and sex : UK

Difference between cycle and 2014 cycle

Age group and sex of applicant		2011	2012	2013	2014	2015
Under 18	Women	34%	3%	-6%	0%	2%
	Men	29%	10%	4%	0%	10%
18	Women	-0%	-3%	-2%	0%	5%
	Men	1%	-4%	-3%	0%	2%
19	Women	5%	-12%	-3%	0%	1%
	Men	7%	-12%	-1%	0%	1%
20-24	Women	3%	-8%	-5%	0%	-5%
	Men	10%	-5%	-3%	0%	-3%
25-29	Women	3%	-7%	-5%	0%	-3%
	Men	10%	-6%	-3%	0%	-5%
30-34	Women	5%	-4%	-4%	0%	-3%
	Men	19%	1%	-2%	0%	-5%
35 and over	Women	8%	-5%	-8%	0%	-3%
	Men	6%	-4%	-7%	0%	2%
All ages	Women	2%	-6%	-4%	0%	1%
	Men	5%	-6%	-3%	0%	1%

IX.2.9 Applicants by sex : England

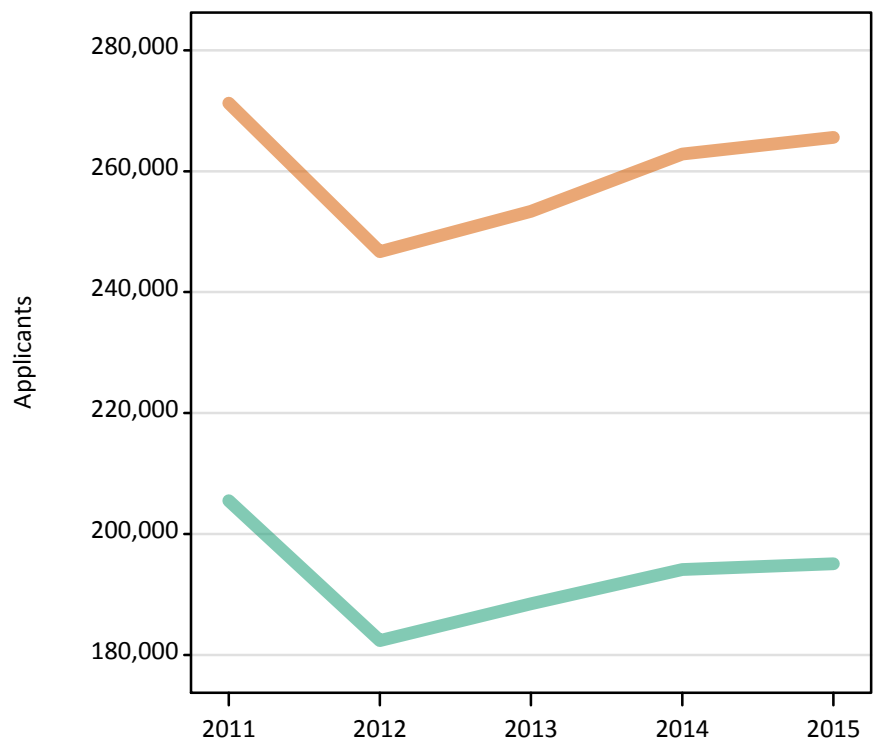
Difference between cycle and 2014 cycle

Men
Women



IX.2.10 Applicants by sex : England

Men
Women



IX.2.11 Applicants by age and sex : England

Age group and sex of applicant		2011	2012	2013	2014	2015
Under 18	Women	730	510	490	550	530
	Men	510	420	420	420	490
18	Women	124,000	119,920	121,030	124,140	130,690
	Men	100,450	95,260	96,510	99,420	101,680
19	Women	50,650	41,380	46,420	47,720	48,080
	Men	43,860	35,560	40,310	40,750	41,230
20-24	Women	49,540	43,650	44,560	47,100	44,570
	Men	39,240	32,710	33,070	34,480	33,150
25-29	Women	17,390	15,440	15,700	16,500	15,960
	Men	8,910	7,560	7,690	7,970	7,540
30-34	Women	10,730	9,870	9,770	10,080	9,570
	Men	5,030	4,150	4,010	4,090	3,850
35 and over	Women	18,240	15,940	15,390	16,740	16,180
	Men	7,510	6,720	6,440	6,960	7,130
All ages	Women	271,260	246,710	253,350	262,820	265,580
	Men	205,510	182,380	188,450	194,100	195,070

IX.2.12 Applicants by age and sex : England

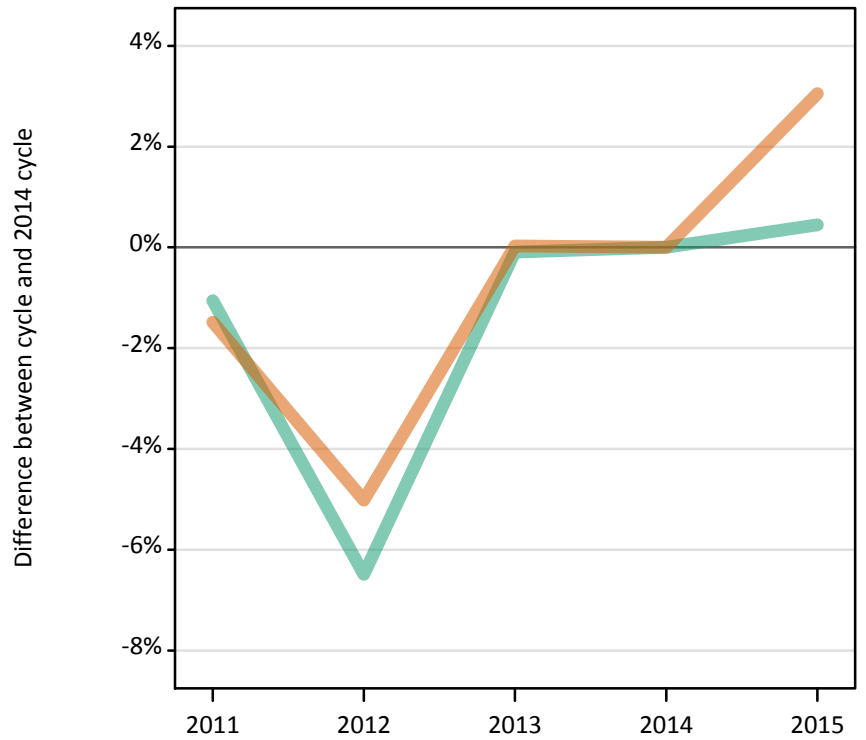
Difference between cycle and 2014 cycle

Age group and sex of applicant		2011	2012	2013	2014	2015
Under 18	Women	32%	-7%	-11%	0%	-5%
	Men	20%	1%	-0%	0%	17%
18	Women	-0%	-3%	-3%	0%	5%
	Men	1%	-4%	-3%	0%	2%
19	Women	6%	-13%	-3%	0%	1%
	Men	8%	-13%	-1%	0%	1%
20-24	Women	5%	-7%	-5%	0%	-5%
	Men	14%	-5%	-4%	0%	-4%
25-29	Women	5%	-6%	-5%	0%	-3%
	Men	12%	-5%	-4%	0%	-5%
30-34	Women	6%	-2%	-3%	0%	-5%
	Men	23%	1%	-2%	0%	-6%
35 and over	Women	9%	-5%	-8%	0%	-3%
	Men	8%	-3%	-7%	0%	2%
All ages	Women	3%	-6%	-4%	0%	1%
	Men	6%	-6%	-3%	0%	1%

IX.2.13 Applicants by sex : Northern Ireland

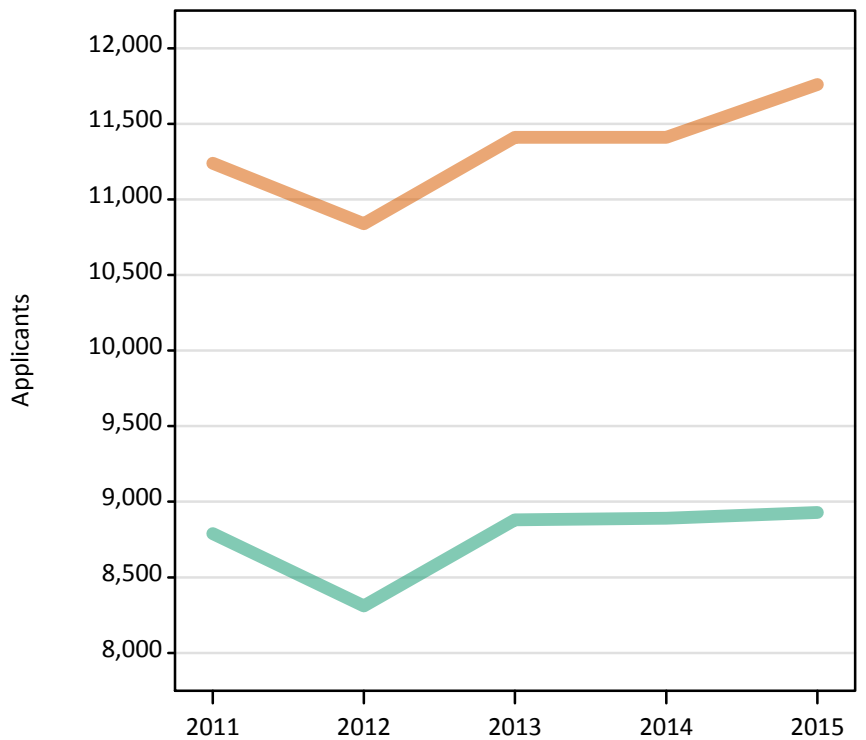
Difference between cycle and 2014 cycle

Men
Women



IX.2.14 Applicants by sex : Northern Ireland

Men
Women



IX.2.15 Applicants by age and sex : Northern Ireland

Age group and sex of applicant		2011	2012	2013	2014	2015
Under 18	Women	30	30	20	20	20
	Men	20	20	20	10	10
18	Women	6,740	6,710	6,540	6,410	6,840
	Men	5,220	5,000	5,160	5,090	5,130
19	Women	1,720	1,530	1,700	1,690	1,710
	Men	1,390	1,230	1,340	1,430	1,460
20-24	Women	1,830	1,740	2,010	2,110	2,030
	Men	1,590	1,570	1,810	1,810	1,750
25-29	Women	480	430	570	600	560
	Men	350	280	320	300	300
30-34	Women	180	180	260	270	280
	Men	110	110	110	120	140
35 and over	Women	270	220	320	320	310
	Men	110	120	130	130	120
All ages	Women	11,240	10,840	11,410	11,410	11,760
	Men	8,790	8,310	8,880	8,890	8,930

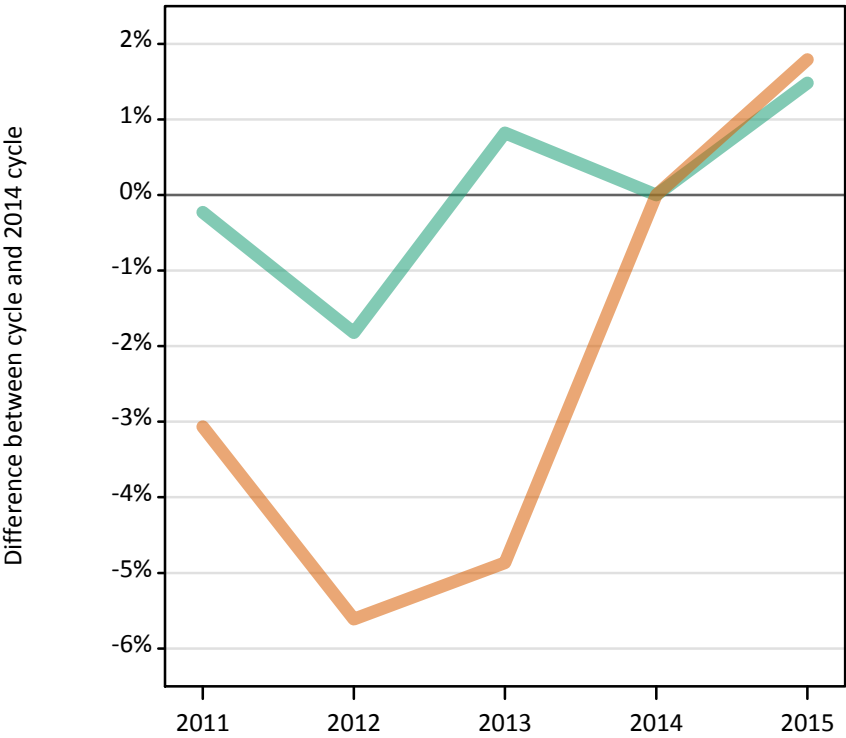
IX.2.16 Applicants by age and sex : Northern Ireland

Difference between cycle and 2014 cycle

Age group and sex of applicant		2011	2012	2013	2014	2015
Under 18	Women	53%	94%	6%	0%	24%
	Men	100%	55%	73%	0%	9%
18	Women	5%	5%	2%	0%	7%
	Men	2%	-2%	1%	0%	1%
19	Women	2%	-9%	1%	0%	1%
	Men	-2%	-14%	-6%	0%	3%
20-24	Women	-13%	-17%	-5%	0%	-4%
	Men	-12%	-13%	-0%	0%	-3%
25-29	Women	-19%	-29%	-5%	0%	-6%
	Men	16%	-6%	7%	0%	0%
30-34	Women	-33%	-33%	-2%	0%	6%
	Men	-7%	-9%	-8%	0%	18%
35 and over	Women	-17%	-31%	-1%	0%	-3%
	Men	-16%	-10%	-4%	0%	-5%
All ages	Women	-1%	-5%	0%	0%	3%
	Men	-1%	-6%	-0%	0%	0%

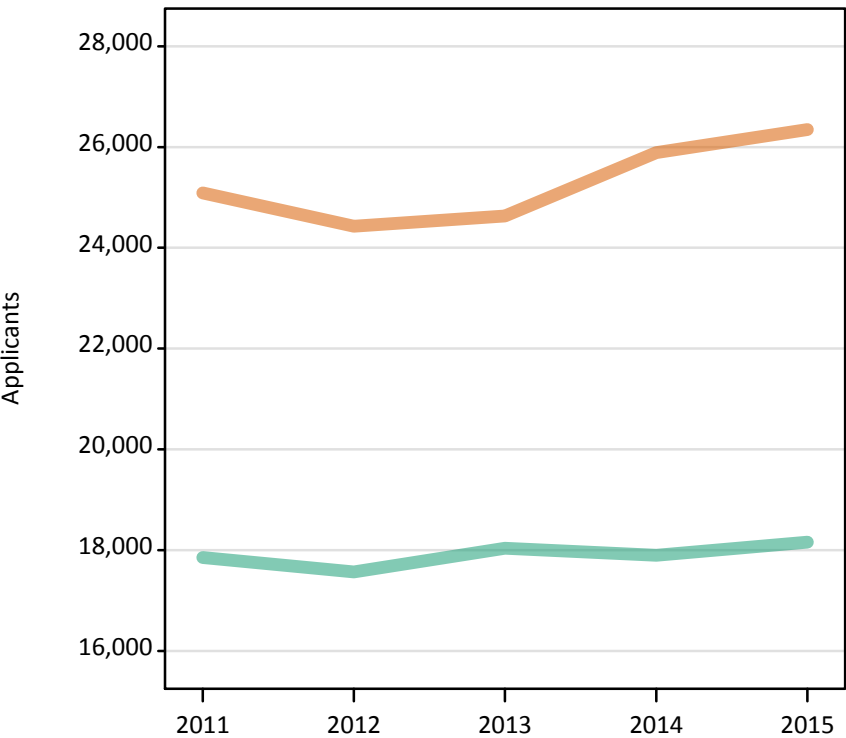
IX.2.17 Applicants by sex : Scotland
Difference between cycle and 2014 cycle

Men
Women



IX.2.18 Applicants by sex : Scotland

Men
Women



IX.2.19 Applicants by age and sex : Scotland

Age group and sex of applicant		2011	2012	2013	2014	2015
Under 18	Women	550	470	400	420	450
	Men	370	320	280	260	270
18	Women	10,790	10,810	10,810	11,280	11,420
	Men	8,320	8,040	8,100	8,040	8,100
19	Women	3,220	3,220	3,180	3,190	3,320
	Men	2,340	2,370	2,340	2,320	2,410
20-24	Women	5,850	5,610	5,910	6,240	6,160
	Men	4,180	4,310	4,700	4,560	4,650
25-29	Women	1,960	1,890	1,880	2,080	2,140
	Men	1,320	1,200	1,310	1,330	1,320
30-34	Women	1,100	980	1,020	1,100	1,210
	Men	620	610	620	630	600
35 and over	Women	1,620	1,460	1,430	1,580	1,640
	Men	710	720	690	750	810
All ages	Women	25,090	24,430	24,630	25,890	26,350
	Men	17,850	17,570	18,040	17,900	18,160

IX.2.20 Applicants by age and sex : Scotland

Difference between cycle and 2014 cycle

Age group and sex of applicant		2011	2012	2013	2014	2015
Under 18	Women	33%	14%	-3%	0%	9%
	Men	41%	23%	8%	0%	3%
18	Women	-4%	-4%	-4%	0%	1%
	Men	3%	0%	1%	0%	1%
19	Women	1%	1%	-0%	0%	4%
	Men	1%	2%	1%	0%	4%
20-24	Women	-6%	-10%	-5%	0%	-1%
	Men	-8%	-6%	3%	0%	2%
25-29	Women	-6%	-9%	-10%	0%	3%
	Men	-1%	-10%	-2%	0%	-1%
30-34	Women	0%	-11%	-7%	0%	10%
	Men	-1%	-3%	-1%	0%	-4%
35 and over	Women	3%	-8%	-9%	0%	4%
	Men	-6%	-5%	-8%	0%	7%
All ages	Women	-3%	-6%	-5%	0%	2%
	Men	-0%	-2%	1%	0%	1%

IX.2.21 Applicants by sex : Wales

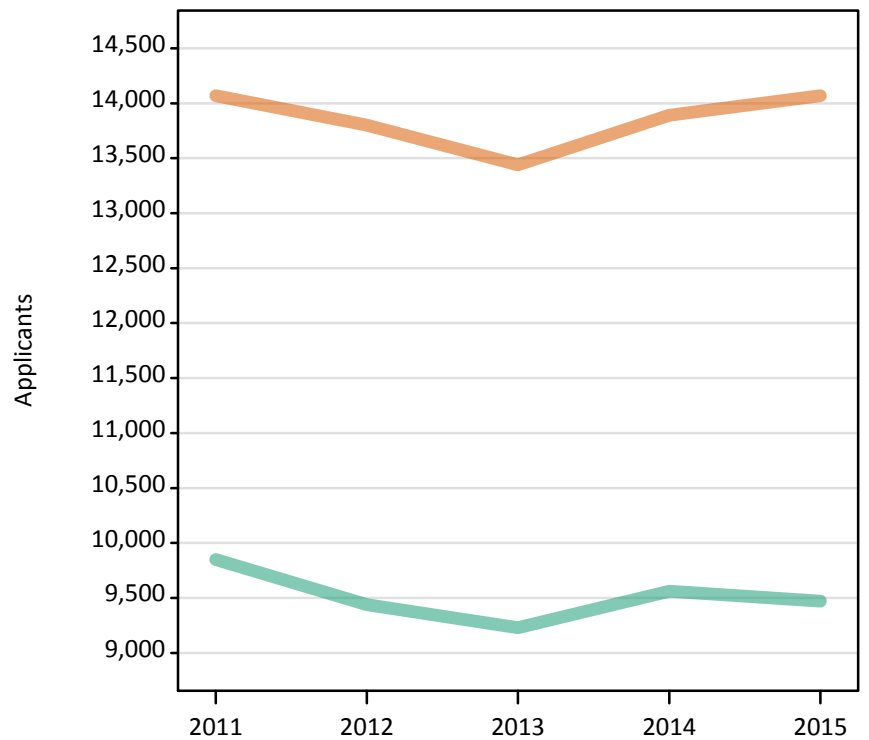
Difference between cycle and 2014 cycle

Men
Women



IX.2.22 Applicants by sex : Wales

Men
Women



IX.2.23 Applicants by age and sex : Wales

Age group and sex of applicant		2011	2012	2013	2014	2015
Under 18	Women	30	10	30	20	20
	Men	20	20	20	20	0
18	Women	6,610	6,610	6,410	6,590	6,970
	Men	5,020	4,810	4,710	4,950	4,960
19	Women	2,420	2,300	2,320	2,420	2,310
	Men	1,890	1,840	1,830	1,890	1,900
20-24	Women	2,640	2,610	2,490	2,550	2,490
	Men	1,870	1,840	1,770	1,760	1,740
25-29	Women	1,020	930	970	1,020	950
	Men	500	440	450	460	430
30-34	Women	550	540	510	550	570
	Men	230	230	190	200	180
35 and over	Women	800	790	710	740	760
	Men	320	260	260	290	260
All ages	Women	14,070	13,800	13,440	13,890	14,070
	Men	9,850	9,440	9,230	9,560	9,470

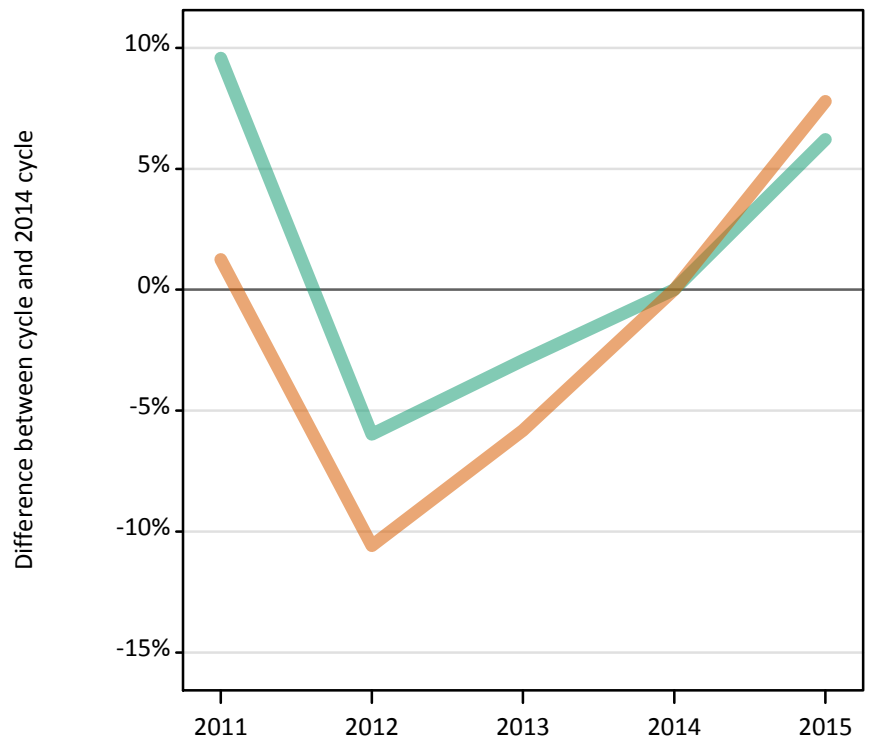
IX.2.24 Applicants by age and sex : Wales

Difference between cycle and 2014 cycle

Age group and sex of applicant		2011	2012	2013	2014	2015
Under 18	Women	120%	-13%	67%	0%	40%
	Men	20%	0%	33%	0%	-80%
18	Women	0%	0%	-3%	0%	6%
	Men	1%	-3%	-5%	0%	0%
19	Women	0%	-5%	-4%	0%	-4%
	Men	0%	-3%	-3%	0%	0%
20-24	Women	4%	2%	-3%	0%	-2%
	Men	6%	5%	1%	0%	-1%
25-29	Women	0%	-8%	-5%	0%	-6%
	Men	9%	-4%	-3%	0%	-5%
30-34	Women	-1%	-3%	-8%	0%	2%
	Men	15%	14%	-6%	0%	-9%
35 and over	Women	8%	6%	-5%	0%	3%
	Men	11%	-9%	-9%	0%	-10%
All ages	Women	1%	-1%	-3%	0%	1%
	Men	3%	-1%	-4%	0%	-1%

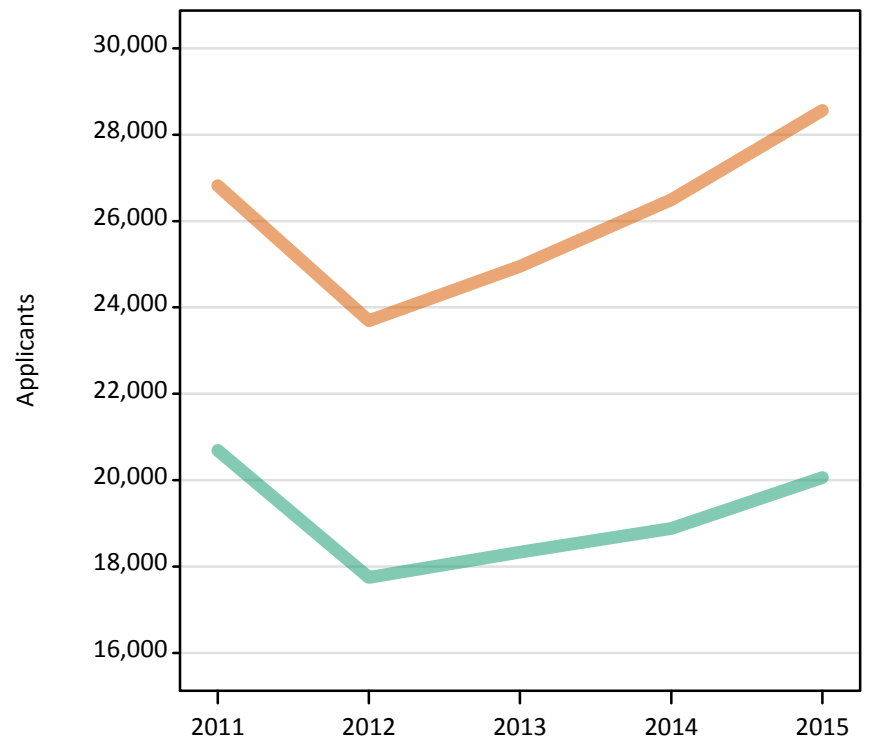
IX.2.25 Applicants by sex : EU (excluding UK)
Difference between cycle and 2014 cycle

Men
Women



IX.2.26 Applicants by sex : EU (excluding UK)

Men
Women



IX.2.27 Applicants by age and sex : EU (excluding UK)

Age group and sex of applicant		2011	2012	2013	2014	2015
Under 18	Women	1,920	1,880	1,910	2,180	2,400
	Men	1,160	1,070	1,200	1,270	1,530
18	Women	8,330	7,870	8,340	8,880	10,020
	Men	5,400	5,360	5,530	5,980	6,660
19	Women	7,750	6,950	7,390	7,920	8,490
	Men	6,150	5,220	5,500	5,490	5,890
20-24	Women	7,410	5,850	6,200	6,360	6,520
	Men	6,620	5,070	5,100	5,250	5,030
25-29	Women	1,020	770	770	790	780
	Men	970	680	650	600	670
30-34	Women	250	210	200	190	180
	Men	240	200	190	170	150
35 and over	Women	160	160	140	180	170
	Men	160	150	160	140	130
All ages	Women	26,820	23,690	24,950	26,490	28,560
	Men	20,690	17,750	18,330	18,880	20,060

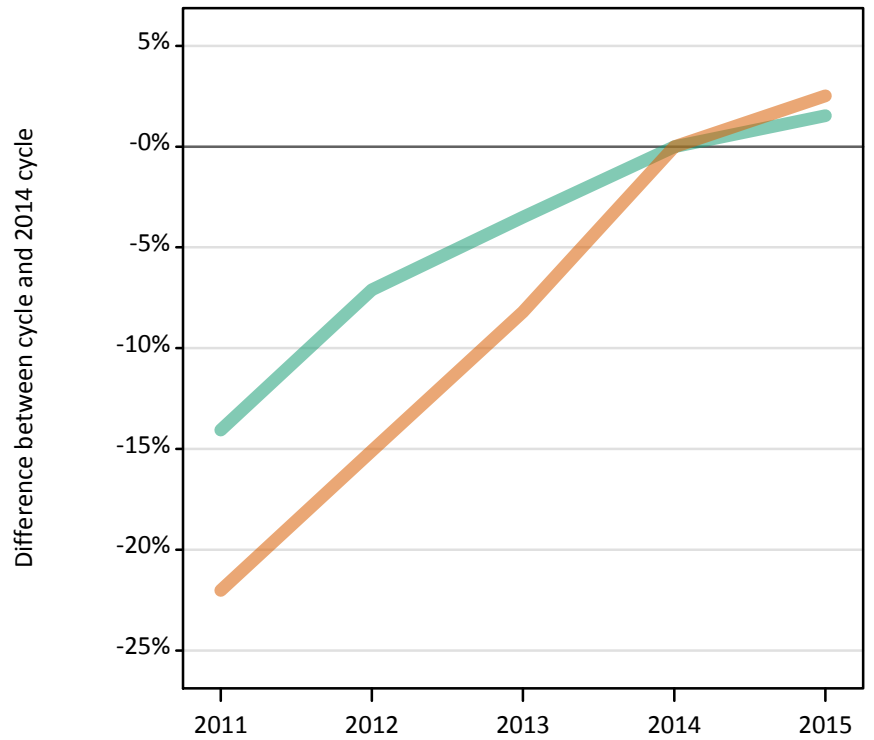
IX.2.28 Applicants by age and sex : EU (excluding UK)

Difference between cycle and 2014 cycle

Age group and sex of applicant		2011	2012	2013	2014	2015
Under 18	Women	-12%	-14%	-12%	0%	10%
	Men	-9%	-16%	-5%	0%	20%
18	Women	-6%	-11%	-6%	0%	13%
	Men	-10%	-10%	-7%	0%	11%
19	Women	-2%	-12%	-7%	0%	7%
	Men	12%	-5%	0%	0%	7%
20-24	Women	17%	-8%	-3%	0%	3%
	Men	26%	-3%	-3%	0%	-4%
25-29	Women	29%	-3%	-2%	0%	-2%
	Men	62%	14%	8%	0%	13%
30-34	Women	33%	10%	9%	0%	-2%
	Men	40%	21%	14%	0%	-11%
35 and over	Women	-8%	-7%	-20%	0%	-2%
	Men	18%	13%	18%	0%	-7%
All ages	Women	1%	-11%	-6%	0%	8%
	Men	10%	-6%	-3%	0%	6%

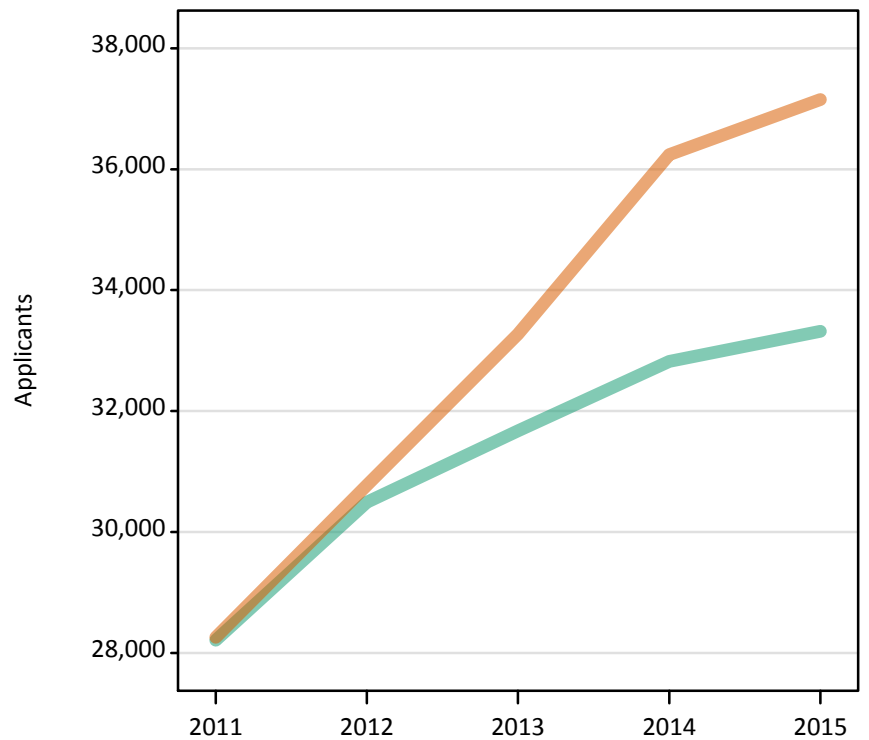
IX.2.29 Applicants by sex : Not EU
Difference between cycle and 2014 cycle

Men
Women



IX.2.30 Applicants by sex : Not EU

Men
Women



IX.2.31 Applicants by age and sex : Not EU

Age group and sex of applicant		2011	2012	2013	2014	2015
Under 18	Women	1,960	2,340	2,720	3,150	3,030
	Men	1,800	2,260	2,570	2,820	2,800
18	Women	8,670	9,830	11,320	12,350	13,190
	Men	7,770	8,810	9,770	10,500	11,290
19	Women	7,510	8,140	8,430	9,380	9,420
	Men	6,830	7,220	7,400	7,870	7,900
20-24	Women	8,450	8,900	9,240	9,790	9,790
	Men	9,580	10,010	9,930	9,740	9,500
25-29	Women	1,060	970	1,000	1,020	1,130
	Men	1,440	1,390	1,310	1,190	1,200
30-34	Women	360	340	320	310	330
	Men	490	470	430	410	400
35 and over	Women	260	250	230	240	260
	Men	300	330	270	280	240
All ages	Women	28,260	30,770	33,270	36,240	37,150
	Men	28,210	30,490	31,670	32,820	33,320

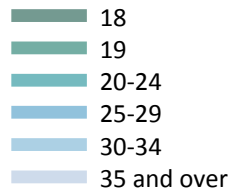
IX.2.32 Applicants by age and sex : Not EU

Difference between cycle and 2014 cycle

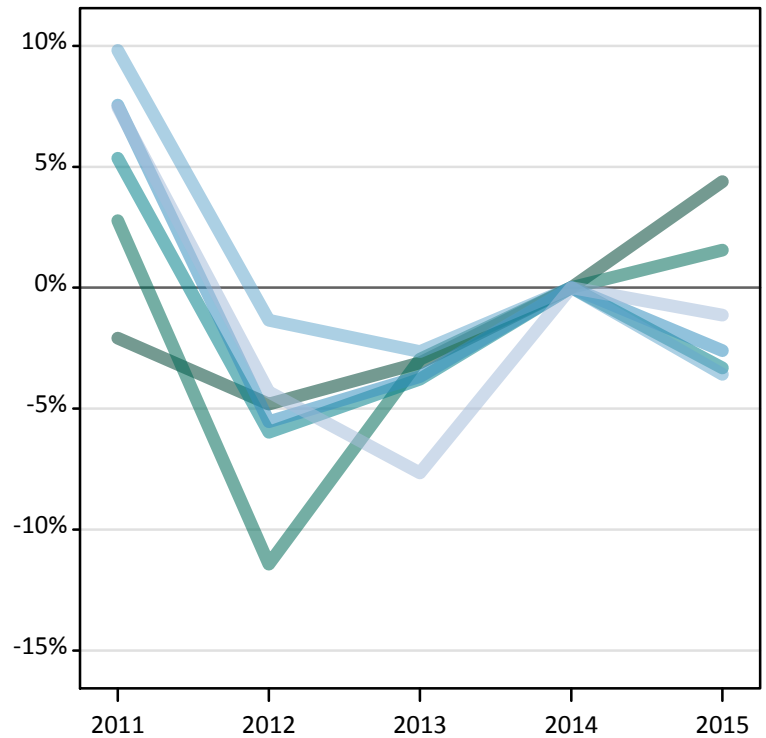
Age group and sex of applicant		2011	2012	2013	2014	2015
Under 18	Women	-38%	-26%	-14%	0%	-4%
	Men	-36%	-20%	-9%	0%	-1%
18	Women	-30%	-20%	-8%	0%	7%
	Men	-26%	-16%	-7%	0%	8%
19	Women	-20%	-13%	-10%	0%	0%
	Men	-13%	-8%	-6%	0%	0%
20-24	Women	-14%	-9%	-6%	0%	0%
	Men	-2%	3%	2%	0%	-2%
25-29	Women	4%	-4%	-2%	0%	11%
	Men	21%	17%	10%	0%	0%
30-34	Women	16%	8%	4%	0%	7%
	Men	20%	14%	4%	0%	-4%
35 and over	Women	8%	3%	-5%	0%	8%
	Men	8%	18%	-2%	0%	-12%
All ages	Women	-22%	-15%	-8%	0%	3%
	Men	-14%	-7%	-3%	0%	2%

IX.2.33 Applicants by domicile and age : All domiciles

Difference between cycle and 2014 cycle



Difference between cycle and 2014 cycle



IX.2.34 Applicants by domicile and age : All domiciles

Domicile and age group		2011	2012	2013	2014	2015
All domiciles	Under 18	9,090	9,360	10,080	11,140	11,550
	18	297,300	289,020	294,220	303,630	316,960
	19	135,720	116,960	128,150	132,060	134,120
	20-24	138,800	123,880	126,770	131,750	127,380
	25-29	36,410	31,980	32,610	33,850	32,970
	30-34	19,890	17,870	17,630	18,110	17,470
	35 and over	30,450	27,120	26,170	28,340	28,020

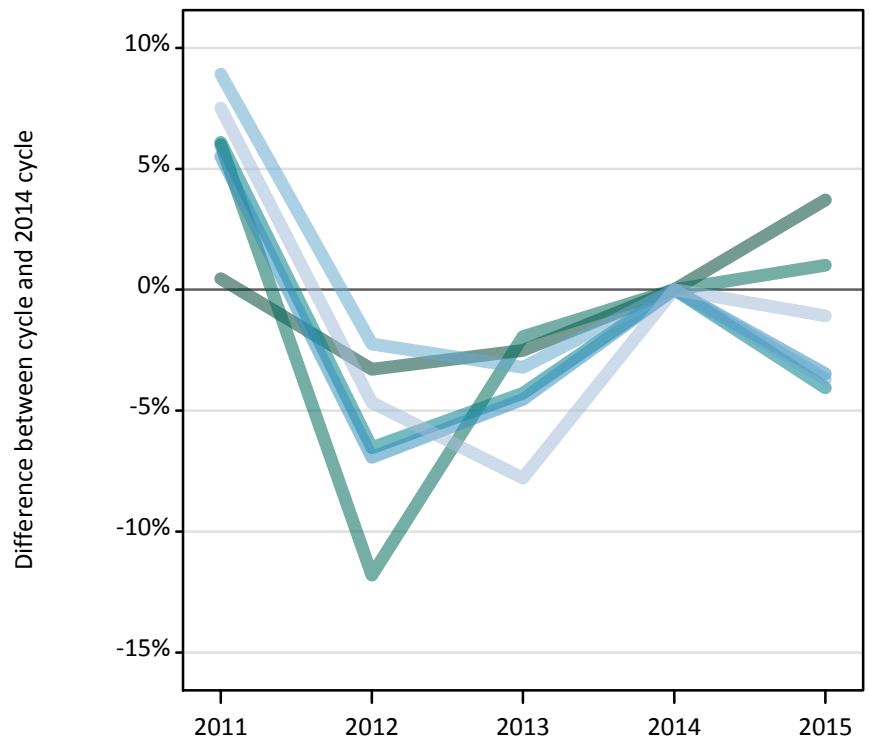
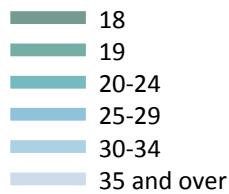
IX.2.35 Applicants by domicile and age : All domiciles

Difference between cycle and 2014 cycle

Domicile and age group		2011	2012	2013	2014	2015
All domiciles	Under 18	-18%	-16%	-9%	0%	4%
	18	-2%	-5%	-3%	0%	4%
	19	3%	-11%	-3%	0%	2%
	20-24	5%	-6%	-4%	0%	-3%
	25-29	8%	-6%	-4%	0%	-3%
	30-34	10%	-1%	-3%	0%	-4%
	35 and over	7%	-4%	-8%	0%	-1%

IX.2.36 Applicants by domicile and age : UK

Difference between cycle and 2014 cycle



IX.2.37 Applicants by domicile and age : UK

Domicile and age group		2011	2012	2013	2014	2015
UK	Under 18	2,250	1,810	1,680	1,710	1,800
	18	267,140	257,160	259,260	265,920	275,790
	19	107,490	89,430	99,430	101,400	102,430
	20-24	106,750	94,050	96,300	100,620	96,540
	25-29	31,930	28,160	28,880	30,260	29,210
	30-34	18,560	16,650	16,490	17,040	16,410
	35 and over	29,570	26,220	25,360	27,510	27,210

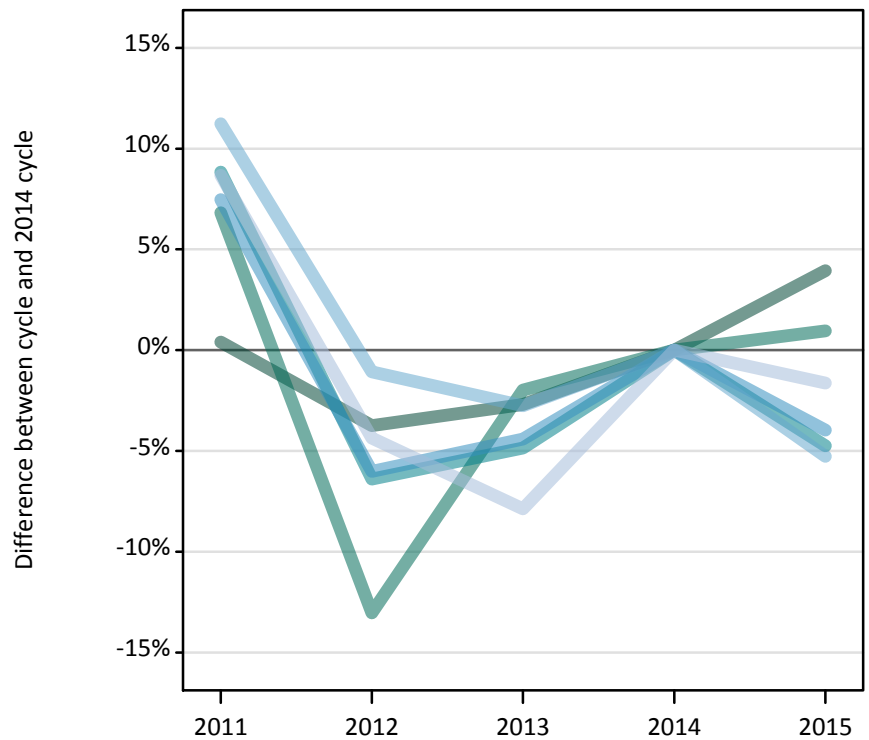
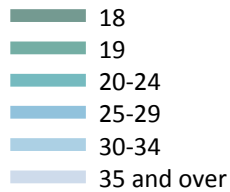
IX.2.38 Applicants by domicile and age : UK

Difference between cycle and 2014 cycle

Domicile and age group		2011	2012	2013	2014	2015
UK	Under 18	32%	6%	-2%	0%	5%
	18	0%	-3%	-3%	0%	4%
	19	6%	-12%	-2%	0%	1%
	20-24	6%	-7%	-4%	0%	-4%
	25-29	6%	-7%	-5%	0%	-3%
	30-34	9%	-2%	-3%	0%	-4%
	35 and over	8%	-5%	-8%	0%	-1%

IX.2.39 Applicants by domicile and age : England

Difference between cycle and 2014 cycle



IX.2.40 Applicants by domicile and age : England

Domicile and age group		2011	2012	2013	2014	2015
England	Under 18	1,230	940	910	970	1,020
	18	224,440	215,180	217,540	223,560	232,360
	19	94,500	76,940	86,730	88,470	89,320
	20-24	88,790	76,360	77,620	81,580	77,720
	25-29	26,300	23,000	23,390	24,470	23,500
	30-34	15,760	14,020	13,780	14,170	13,420
	35 and over	25,750	22,660	21,830	23,690	23,310

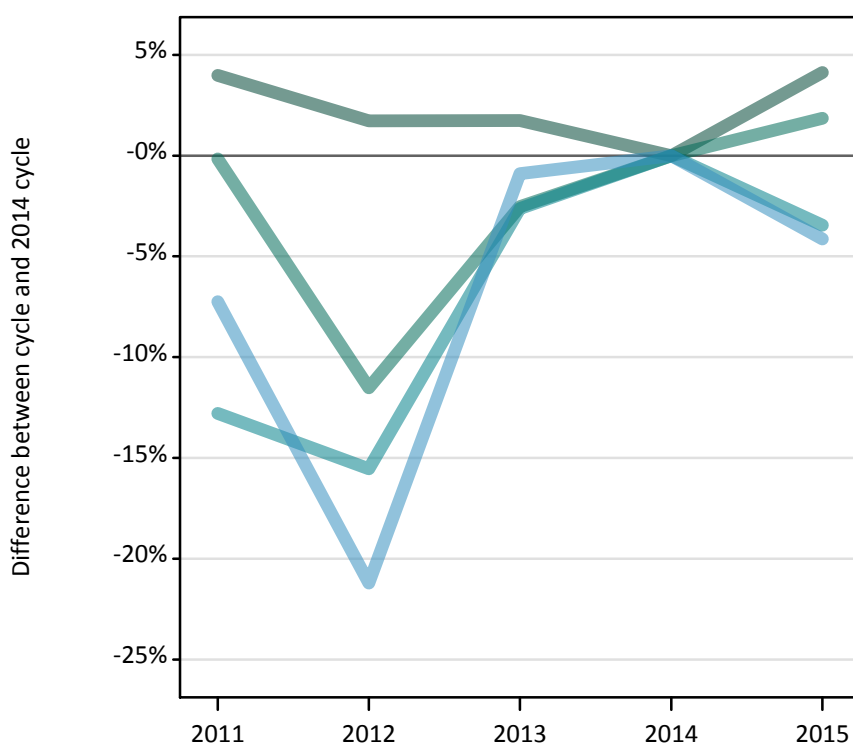
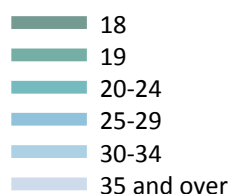
IX.2.41 Applicants by domicile and age : England

Difference between cycle and 2014 cycle

Domicile and age group		2011	2012	2013	2014	2015
England	Under 18	27%	-4%	-6%	0%	5%
	18	0%	-4%	-3%	0%	4%
	19	7%	-13%	-2%	0%	1%
	20-24	9%	-6%	-5%	0%	-5%
	25-29	7%	-6%	-4%	0%	-4%
	30-34	11%	-1%	-3%	0%	-5%
	35 and over	9%	-4%	-8%	0%	-2%

IX.2.42 Applicants by domicile and age : Northern Ireland

Difference between cycle and 2014 cycle



IX.2.43 Applicants by domicile and age : Northern Ireland

Domicile and age group		2011	2012	2013	2014	2015
Northern Ireland	Under 18	50	50	40	30	30
	18	11,960	11,700	11,700	11,500	11,980
	19	3,110	2,760	3,040	3,120	3,170
	20-24	3,420	3,310	3,820	3,920	3,780
	25-29	830	710	890	900	860
	30-34	290	290	370	390	420
	35 and over	380	340	440	450	440

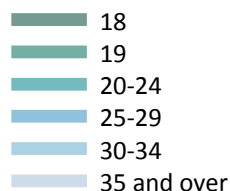
IX.2.44 Applicants by domicile and age : Northern Ireland

Difference between cycle and 2014 cycle

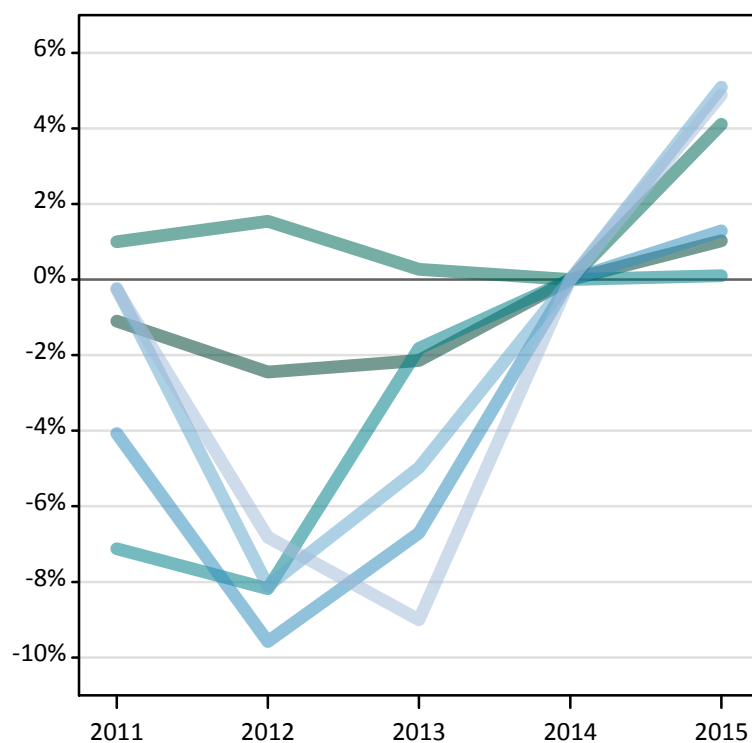
Domicile and age group		2011	2012	2013	2014	2015
Northern Ireland	Under 18	71%	79%	32%	0%	18%
	18	4%	2%	2%	0%	4%
	19	-0%	-12%	-3%	0%	2%
	20-24	-13%	-16%	-3%	0%	-3%
	25-29	-7%	-21%	-1%	0%	-4%
	30-34	-25%	-26%	-4%	0%	9%
	35 and over	-16%	-25%	-2%	0%	-3%

IX.2.45 Applicants by domicile and age : Scotland

Difference between cycle and 2014 cycle



Difference between cycle and 2014 cycle



IX.2.46 Applicants by domicile and age : Scotland

Domicile and age group		2011	2012	2013	2014	2015
Scotland	Under 18	920	800	680	680	720
	18	19,110	18,850	18,910	19,320	19,520
	19	5,560	5,590	5,520	5,500	5,730
	20-24	10,040	9,920	10,610	10,810	10,820
	25-29	3,280	3,090	3,190	3,420	3,460
	30-34	1,720	1,590	1,640	1,730	1,820
	35 and over	2,330	2,170	2,120	2,330	2,450

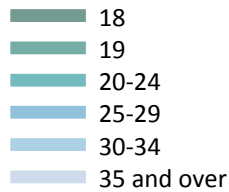
IX.2.47 Applicants by domicile and age : Scotland

Difference between cycle and 2014 cycle

Domicile and age group		2011	2012	2013	2014	2015
Scotland	Under 18	36%	17%	1%	0%	7%
	18	-1%	-2%	-2%	0%	1%
	19	1%	2%	0%	0%	4%
	20-24	-7%	-8%	-2%	0%	0%
	25-29	-4%	-10%	-7%	0%	1%
	30-34	-0%	-8%	-5%	0%	5%
	35 and over	-0%	-7%	-9%	0%	5%

IX.2.48 Applicants by domicile and age : Wales

Difference between cycle and 2014 cycle



IX.2.49 Applicants by domicile and age : Wales

Domicile and age group		2011	2012	2013	2014	2015
Wales	Under 18	50	30	50	30	20
	18	11,630	11,430	11,120	11,540	11,930
	19	4,320	4,140	4,150	4,310	4,210
	20-24	4,510	4,460	4,260	4,310	4,220
	25-29	1,520	1,370	1,420	1,480	1,390
	30-34	780	760	700	750	750
	35 and over	1,120	1,050	970	1,030	1,020

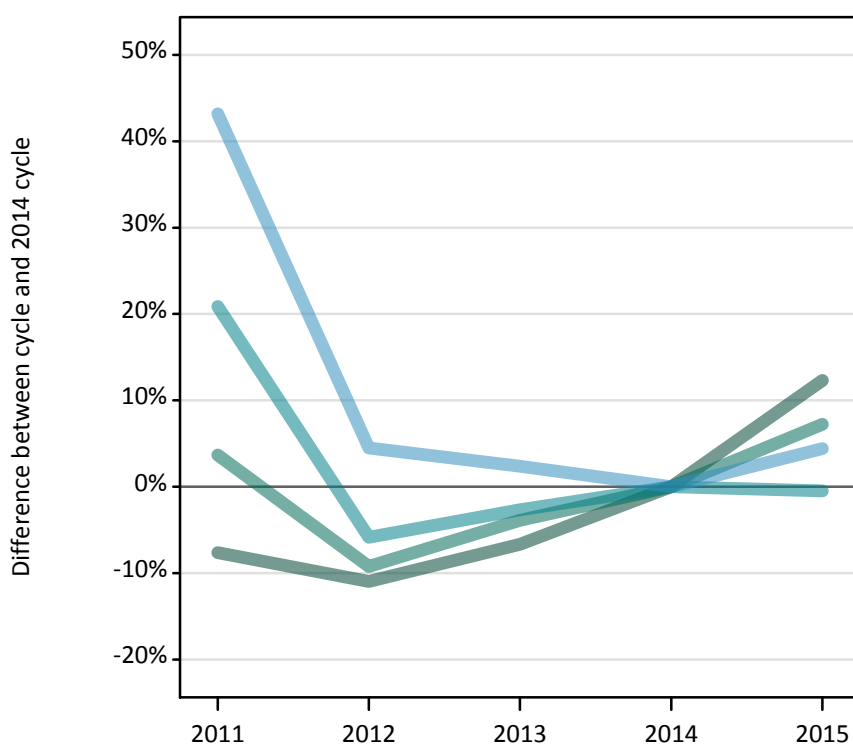
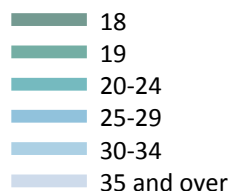
IX.2.50 Applicants by domicile and age : Wales

Difference between cycle and 2014 cycle

Domicile and age group		2011	2012	2013	2014	2015
Wales	Under 18	70%	-7%	50%	0%	-20%
	18	1%	-1%	-4%	0%	3%
	19	0%	-4%	-4%	0%	-2%
	20-24	5%	3%	-1%	0%	-2%
	25-29	3%	-7%	-4%	0%	-6%
	30-34	3%	1%	-7%	0%	-1%
	35 and over	9%	2%	-6%	0%	-1%

IX.2.51 Applicants by domicile and age : EU (excluding UK)

Difference between cycle and 2014 cycle



IX.2.52 Applicants by domicile and age : EU (excluding UK)

Domicile and age group		2011	2012	2013	2014	2015
EU (excluding UK)	Under 18	3,080	2,950	3,120	3,460	3,920
	18	13,720	13,230	13,870	14,860	16,690
	19	13,900	12,170	12,890	13,410	14,380
	20-24	14,030	10,930	11,300	11,610	11,550
	25-29	1,980	1,450	1,420	1,390	1,450
	30-34	480	410	390	360	330
	35 and over	320	320	300	310	300

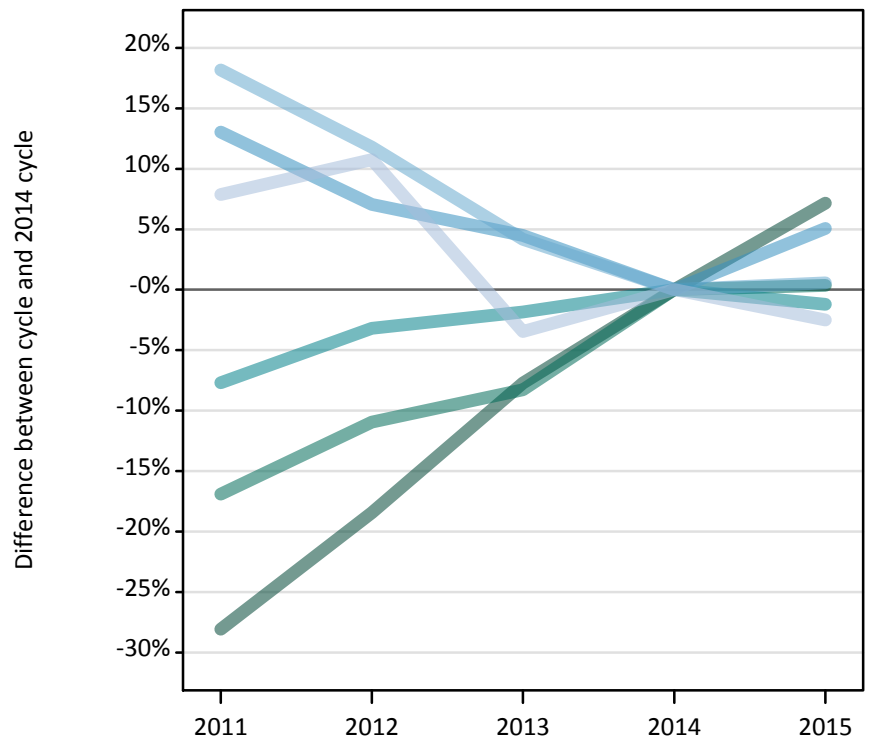
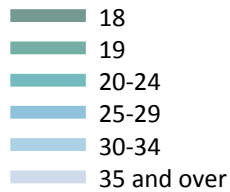
IX.2.53 Applicants by domicile and age : EU (excluding UK)

Difference between cycle and 2014 cycle

Domicile and age group		2011	2012	2013	2014	2015
EU (excluding UK)	Under 18	-11%	-15%	-10%	0%	14%
	18	-8%	-11%	-7%	0%	12%
	19	4%	-9%	-4%	0%	7%
	20-24	21%	-6%	-3%	0%	-0%
	25-29	43%	4%	2%	0%	4%
	30-34	36%	15%	11%	0%	-6%
	35 and over	3%	1%	-4%	0%	-4%

IX.2.54 Applicants by domicile and age : Not EU

Difference between cycle and 2014 cycle



IX.2.55 Applicants by domicile and age : Not EU

Domicile and age group		2011	2012	2013	2014	2015
Not EU	Under 18	3,760	4,600	5,290	5,970	5,830
	18	16,430	18,630	21,090	22,850	24,490
	19	14,340	15,360	15,830	17,260	17,310
	20-24	18,030	18,910	19,170	19,530	19,300
	25-29	2,500	2,370	2,310	2,210	2,320
	30-34	850	810	750	720	730
	35 and over	560	580	500	520	510

IX.2.56 Applicants by domicile and age : Not EU

Difference between cycle and 2014 cycle

Domicile and age group		2011	2012	2013	2014	2015
Not EU	Under 18	-37%	-23%	-11%	0%	-2%
	18	-28%	-18%	-8%	0%	7%
	19	-17%	-11%	-8%	0%	0%
	20-24	-8%	-3%	-2%	0%	-1%
	25-29	13%	7%	4%	0%	5%
	30-34	18%	12%	4%	0%	1%
	35 and over	8%	11%	-3%	0%	-3%

IX.2.57 Technical notes and definitions

These additional tables have been produced to help comparisons through time, particularly when considering Scottish domiciled applicants and Scottish providers.

In 2015, a set of courses relating to teacher training that historically would only have been available through UCAS Teacher Training, and therefore not previously counted in the scope of this statistical release, were brought into the undergraduate UCAS scheme. These courses are all offered by providers based in Scotland and are in the JACS3 detailed subject reporting grouping of 'X1'. The large majority of applications to these courses are from applicants living in Scotland.

These additional tables exclude any applications made by applicants to subject group 'X1' at Scottish providers and provide a better 'like for like' comparison particularly when considering Scottish domiciled applicants and Scottish providers. The primary deadline applicant statistics which include all applications to Scottish providers are available upon the UCAS website.

Applicants have been able to submit applications for all 2015 courses since early September. People who submit their applications to UCAS by the January deadline are considered 'on time' applicants for the large majority of courses offered through UCAS. Some art and design courses have a later deadline of 24 March. By definition all main scheme applications have been received by the 30 June deadline.

Counts of the number of applicants reported have been rounded to the nearest 10 applicants, this may result in instances where totals do not equal the sum of the components. Proportional changes have been rounded to the nearest whole percentage point.

Age

This statistical release uses country-specific age definitions which align with the cut off points for school/college cohorts within the different administrations of the UK. For England and Wales ages are defined on the 31 August, for Northern Ireland on the 1 July and for Scotland on the 28 February the following year. Defining ages in this way matches the assignment of children to school cohorts. For applicants outside of the UK the cohort cut off for England and Wales has been used.

Applicant

A person who has made an application in the UCAS system during the cycle reported (including applications for deferred entry). Records of prior acceptance (RPAs) are excluded.

Application

An application to a course at a provider made by an applicant in the UCAS main scheme. Applicants may make up to five main scheme applications.

Country of provider

An applicant may be counted once for each provider country they have applied to in the main scheme. If an applicant has applied to providers in multiple countries then the applicant is counted once within each country of provider applied to.

This statistical release excludes a small number of applications to a provider based in the EU.

Domicile

Declared area of permanent residence. The Channel Islands and the Isle of Man have been assigned as 'Not EU'.

First time applicant

An applicant that did not apply to the UCAS scheme in the previous cycle.

Main scheme

The main UCAS application scheme through which up to five providers/courses can be applied to. This opens in September and closes to new applications on 30 June the following year.

Reapplicant

An applicant that applied to the UCAS scheme in the previous cycle.

IX.2.58 Technical notes and definitions: continued

Subject group

The JACS3 classification used to classify courses into subject groups.

Tariff group of provider

Providers are grouped as higher, medium or lower tariff based on their average levels of attainment of their accepted applicants (summarised through UCAS Tariff points) in recent cycles. Each group of providers accounted for around a third of all UK 18 year old acceptances in recent cycles.