

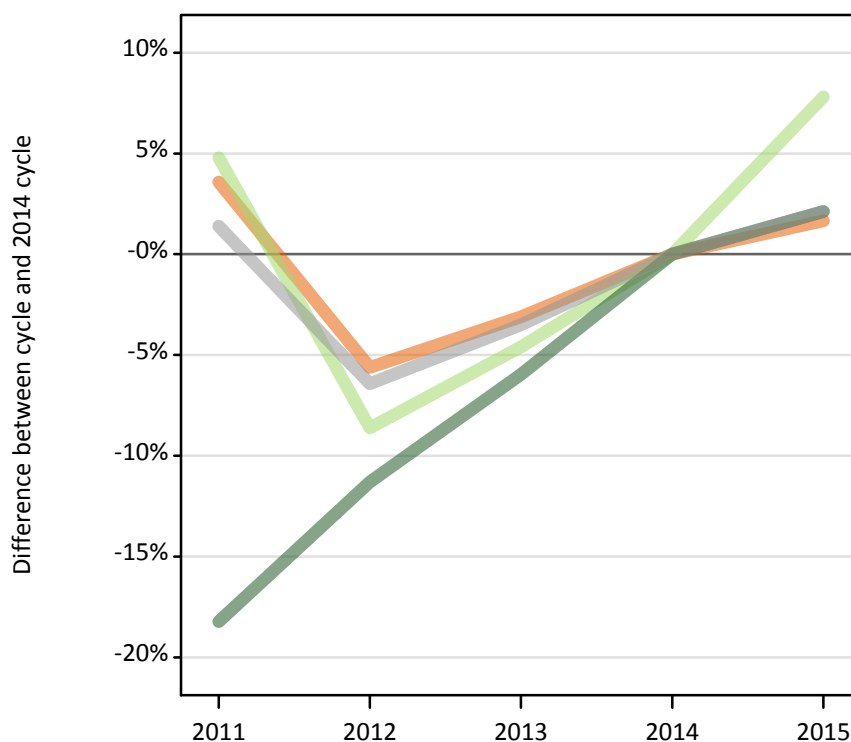
June Deadline Analysis: Domicile

Applicants by domicile at the 30 June deadline

I.1.1 Applicants by domicile group

Difference between cycle and 2014 cycle

- UK
- EU (excluding UK)
- Not EU
- All domiciles



I.1.2 Applicants by domicile group

Domicile group of applicant	2011	2012	2013	2014	2015
UK	564,120	513,970	527,670	544,580	553,590
EU (excluding UK)	47,560	41,480	43,290	45,380	48,930
Not EU	56,470	61,260	64,940	69,060	70,530
All domiciles	668,150	616,700	635,910	659,030	673,040

I.1.3 Applicants by domicile group

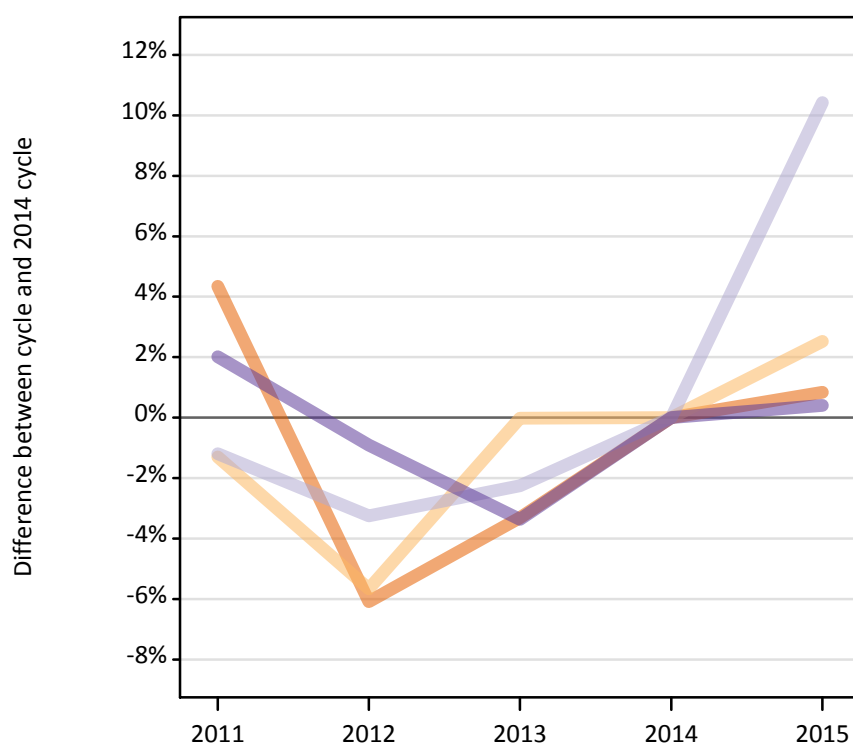
Difference between cycle and 2014 cycle

Domicile group of applicant	2011	2012	2013	2014	2015
UK	4%	-6%	-3%	0%	2%
EU (excluding UK)	5%	-9%	-5%	0%	8%
Not EU	-18%	-11%	-6%	0%	2%
All domiciles	1%	-6%	-4%	0%	2%

I.1.4 Applicants by UK country of domicile

Difference between cycle and 2014 cycle

England
Northern Ireland
Scotland
Wales



I.1.5 Applicants by UK country of domicile

Domicile group of applicant	2011	2012	2013	2014	2015
England	476,770	429,100	441,790	456,920	460,740
Northern Ireland	20,030	19,150	20,290	20,300	20,810
Scotland	43,390	42,490	42,930	43,910	48,490
Wales	23,920	23,240	22,660	23,450	23,550
UK	564,120	513,970	527,670	544,580	553,590

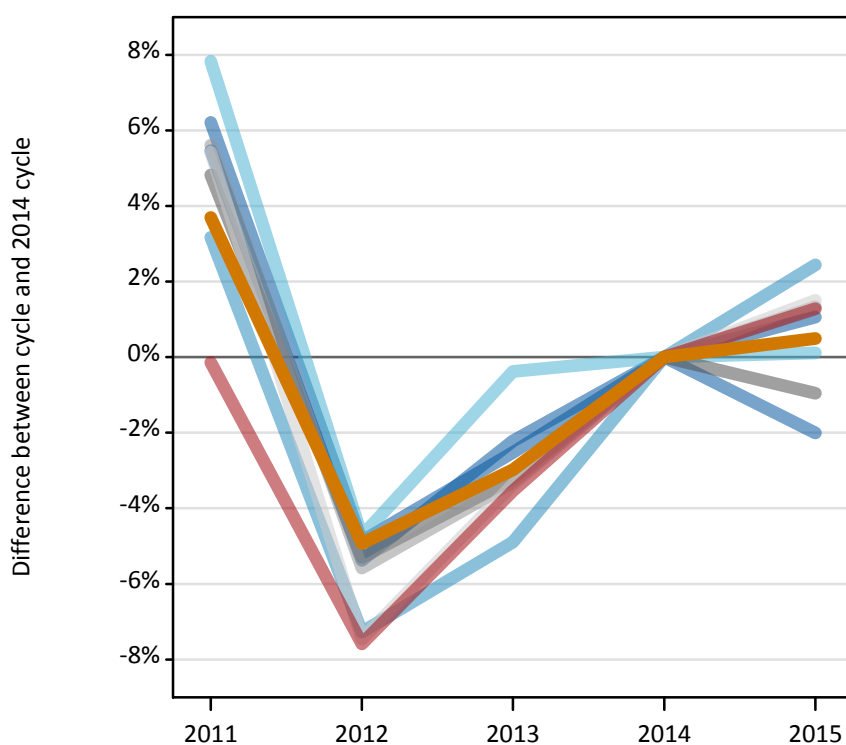
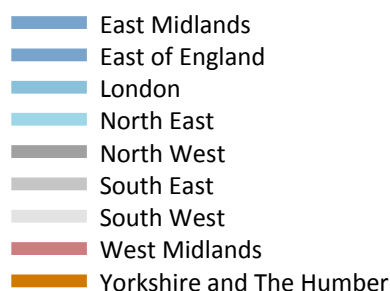
I.1.6 Applicants by UK country of domicile

Difference between cycle and 2014 cycle

Domicile group of applicant	2011	2012	2013	2014	2015
England	4%	-6%	-3%	0%	1%
Northern Ireland	-1%	-6%	-0%	0%	3%
Scotland	-1%	-3%	-2%	0%	10%
Wales	2%	-1%	-3%	0%	0%
UK	4%	-6%	-3%	0%	2%

I.1.7 Applicants by English region of domicile

Difference between cycle and 2014 cycle



I.1.8 Applicants by English region of domicile

English region	2011	2012	2013	2014	2015
North East	21,390	18,900	19,760	19,840	19,860
Yorkshire and The Humber	43,520	39,900	40,720	41,970	42,180
North West	65,420	59,110	60,410	62,420	61,820
East Midlands	36,970	33,110	33,930	34,810	34,110
West Midlands	48,490	44,880	46,840	48,560	49,180
East of England	48,620	43,620	45,070	46,100	46,580
London	92,970	83,560	85,700	90,110	92,310
South East	75,620	67,600	69,230	71,600	72,560
South West	43,780	38,430	40,130	41,530	42,150

I.1.9 Applicants by English region of domicile

Difference between cycle and 2014 cycle

English region	2011	2012	2013	2014	2015
North East	8%	-5%	-0%	0%	0%
Yorkshire and The Humber	4%	-5%	-3%	0%	0%
North West	5%	-5%	-3%	0%	-1%
East Midlands	6%	-5%	-3%	0%	-2%
West Midlands	-0%	-8%	-4%	0%	1%
East of England	5%	-5%	-2%	0%	1%
London	3%	-7%	-5%	0%	2%
South East	6%	-6%	-3%	0%	1%
South West	5%	-7%	-3%	0%	1%

I.1.10 Applicants by declared country of domicile

Selected countries

Declared country of domicile	2011	2012	2013	2014	2015
Angola	80	100	90	110	210
Australia	400	470	540	570	590
Austria	560	550	570	590	620
Azerbaijan	220	260	290	380	300
Bahrain	340	360	380	380	350
Bangladesh	380	390	290	320	340
Barbados	80	90	80	90	110
Belgium	980	860	940	1,010	1,080
Bermuda	250	210	190	200	210
Botswana	150	160	110	120	170
Brazil	150	200	230	260	290
Brunei	800	750	730	840	540
Bulgaria	2,380	2,290	2,540	2,290	2,280
Canada	2,120	2,360	2,330	2,270	2,390
Cayman Islands	100	110	110	120	100
China	9,660	10,510	10,690	10,730	11,540
Croatia	40	40	70	150	270
Cyprus (European Union)	4,060	3,280	3,300	3,280	3,220
Czech Republic	450	450	470	600	850
Denmark	460	420	460	450	480
Egypt	260	340	480	610	710
Estonia	630	550	610	520	500
Finland	900	710	820	920	1,010
France	4,220	3,780	3,850	4,370	4,910
Germany	4,120	3,360	3,150	3,150	3,300
Ghana	260	240	260	270	290
Gibraltar	300	280	310	300	290
Greece	2,760	2,370	2,420	2,360	2,320
Guernsey	320	300	300	300	320
Hong Kong	4,350	6,000	6,170	6,570	6,210
Hungary	400	570	770	770	830
India	3,090	3,380	3,790	3,990	4,130
Indonesia	280	350	480	510	570
Iran	550	460	270	260	230
Ireland	7,380	5,990	5,940	5,710	5,680
Isle of Man	550	520	490	500	460
Israel	110	110	140	110	130
Italy	2,430	2,600	3,150	3,990	4,660
Japan	430	490	490	540	490
Jersey	600	570	530	500	520
Jordan	370	350	410	410	420
Kazakhstan	450	360	360	370	360
Kenya	640	690	650	690	750
Korea (South)	1,300	1,320	1,390	1,380	1,520
Kuwait	420	460	450	480	540

Declared country of domicile	2011	2012	2013	2014	2015
Latvia	1,020	730	590	550	520
Lebanon	140	180	200	250	260
Libyan AR	90	80	90	130	110
Lithuania	3,280	2,390	2,110	1,910	1,820
Luxembourg	380	370	420	460	440
Macao	110	150	140	180	260
Malaysia	3,520	3,810	4,820	6,180	6,530
Malta	140	110	120	100	100
Mauritius	470	460	390	500	400
Mexico	140	140	160	150	170
Morocco	210	210	260	320	360
Nepal	150	160	120	100	80
Netherlands	830	740	800	820	890
New Zealand	140	140	150	170	180
Nigeria	2,220	2,100	2,280	2,150	1,990
Norway	1,880	2,030	2,150	2,180	2,080
Oman	200	220	250	330	340
Pakistan	1,950	1,830	1,760	1,750	1,810
Philippines	100	110	120	130	170
Poland	2,090	1,840	2,180	2,550	2,960
Portugal	740	690	860	930	1,200
Qatar	380	410	510	460	470
Romania	2,950	2,740	2,550	2,730	3,430
Russia	740	840	970	1,190	1,300
Saudi Arabia	990	960	1,020	980	1,060
Serbia	80	100	130	110	100
Singapore	3,270	3,800	4,090	4,290	4,130
Slovakia	480	500	500	600	590
Slovenia	110	110	130	160	160
South Africa	260	270	310	330	420
Spain	1,700	1,600	2,080	2,470	2,910
Sri Lanka	490	380	330	300	250
Sweden	1,670	1,510	1,580	1,560	1,490
Switzerland	920	980	1,120	1,130	1,280
Taiwan	300	310	310	330	370
Tanzania	180	160	190	200	170
Thailand	590	660	700	820	830
Trinidad and Tobago	170	160	170	170	200
Turkey	450	490	560	600	610
Uganda	140	180	200	140	170
Ukraine	200	240	300	320	280
United Arab Emirates	830	920	1,090	1,300	1,420
United States of America	2,900	3,120	3,450	3,770	3,800
Vietnam	690	690	660	580	470
Zambia	120	150	170	150	160
Zimbabwe	350	370	360	460	420

I.1.11 Applicants by declared country of domicile

Selected countries, difference between cycle and 2014 cycle

Declared country of domicile	2011	2012	2013	2014	2015
Angola	-28%	-6%	-15%	0%	91%
Australia	-29%	-17%	-5%	0%	4%
Austria	-5%	-6%	-4%	0%	6%
Azerbaijan	-42%	-31%	-25%	0%	-21%
Bahrain	-11%	-4%	1%	0%	-8%
Bangladesh	19%	22%	-9%	0%	4%
Barbados	-5%	9%	-8%	0%	24%
Belgium	-3%	-15%	-7%	0%	8%
Bermuda	23%	1%	-4%	0%	1%
Botswana	27%	32%	-12%	0%	39%
Brazil	-41%	-22%	-13%	0%	10%
Brunei	-5%	-11%	-14%	0%	-36%
Bulgaria	4%	0%	11%	0%	-0%
Canada	-7%	4%	2%	0%	5%
Cayman Islands	-15%	-13%	-13%	0%	-18%
China	-10%	-2%	-0%	0%	8%
Croatia	-75%	-76%	-55%	0%	75%
Cyprus (European Union)	24%	-0%	0%	0%	-2%
Czech Republic	-25%	-25%	-22%	0%	41%
Denmark	3%	-6%	2%	0%	7%
Egypt	-57%	-44%	-22%	0%	16%
Estonia	22%	6%	17%	0%	-2%
Finland	-2%	-22%	-11%	0%	10%
France	-4%	-14%	-12%	0%	12%
Germany	31%	7%	0%	0%	5%
Ghana	-5%	-11%	-5%	0%	7%
Gibraltar	2%	-6%	4%	0%	-1%
Greece	17%	0%	3%	0%	-2%
Guernsey	5%	0%	-0%	0%	6%
Hong Kong	-34%	-9%	-6%	0%	-6%
Hungary	-47%	-25%	0%	0%	9%
India	-23%	-15%	-5%	0%	3%
Indonesia	-45%	-30%	-5%	0%	13%
Iran	114%	79%	3%	0%	-11%
Ireland	29%	5%	4%	0%	-1%
Isle of Man	11%	3%	-2%	0%	-8%
Israel	1%	6%	31%	0%	18%
Italy	-39%	-35%	-21%	0%	17%
Japan	-21%	-9%	-8%	0%	-9%
Jersey	21%	14%	7%	0%	4%
Jordan	-11%	-14%	-0%	0%	1%
Kazakhstan	22%	-2%	-2%	0%	-4%
Kenya	-8%	-1%	-6%	0%	8%
Korea (South)	-5%	-4%	1%	0%	10%
Kuwait	-11%	-4%	-6%	0%	13%

Declared country of domicile	2011	2012	2013	2014	2015
Latvia	85%	33%	8%	0%	-5%
Lebanon	-43%	-30%	-20%	0%	3%
Libyan AR	-27%	-37%	-30%	0%	-16%
Lithuania	71%	25%	10%	0%	-5%
Luxembourg	-16%	-20%	-9%	0%	-5%
Macao	-38%	-15%	-22%	0%	42%
Malaysia	-43%	-38%	-22%	0%	6%
Malta	41%	6%	17%	0%	5%
Mauritius	-7%	-8%	-21%	0%	-19%
Mexico	-10%	-10%	1%	0%	11%
Morocco	-35%	-34%	-20%	0%	11%
Nepal	54%	67%	23%	0%	-21%
Netherlands	2%	-9%	-2%	0%	9%
New Zealand	-15%	-17%	-10%	0%	5%
Nigeria	3%	-2%	6%	0%	-7%
Norway	-14%	-7%	-1%	0%	-5%
Oman	-41%	-33%	-25%	0%	3%
Pakistan	12%	5%	1%	0%	4%
Philippines	-23%	-16%	-7%	0%	29%
Poland	-18%	-28%	-14%	0%	16%
Portugal	-21%	-25%	-8%	0%	30%
Qatar	-19%	-12%	9%	0%	2%
Romania	8%	0%	-7%	0%	26%
Russia	-38%	-29%	-19%	0%	8%
Saudi Arabia	1%	-2%	4%	0%	8%
Serbia	-33%	-15%	16%	0%	-16%
Singapore	-24%	-11%	-5%	0%	-4%
Slovakia	-19%	-17%	-17%	0%	-1%
Slovenia	-28%	-28%	-16%	0%	3%
South Africa	-23%	-18%	-7%	0%	26%
Spain	-31%	-35%	-16%	0%	18%
Sri Lanka	60%	25%	7%	0%	-18%
Sweden	7%	-3%	1%	0%	-5%
Switzerland	-19%	-14%	-1%	0%	13%
Taiwan	-10%	-6%	-7%	0%	11%
Tanzania	-12%	-18%	-4%	0%	-17%
Thailand	-28%	-20%	-15%	0%	1%
Trinidad and Tobago	3%	-6%	2%	0%	22%
Turkey	-26%	-20%	-7%	0%	1%
Uganda	4%	35%	46%	0%	22%
Ukraine	-39%	-27%	-8%	0%	-14%
United Arab Emirates	-36%	-29%	-16%	0%	10%
United States of America	-23%	-17%	-9%	0%	1%
Vietnam	19%	20%	14%	0%	-18%
Zambia	-16%	3%	14%	0%	8%
Zimbabwe	-23%	-20%	-22%	0%	-9%

I.1.12 Technical notes and definitions

Applicants have been able to submit applications for all 2015 courses since early September.

People who submit their applications to UCAS by the January deadline are considered 'on time' applicants for the large majority of courses offered through UCAS. Some art and design courses have a later deadline of 24 March. By definition all main scheme applications have been received by the 30 June deadline.

In 2015, a set of courses relating to teacher training that historically would only have been available through UCAS Teacher Training, and therefore not previously counted in the scope of this statistical release, were brought into the undergraduate UCAS scheme. These additional courses are all offered by providers based in Scotland and are in the JACS3 detailed subject reporting grouping of 'X1 - Training Teachers'.

The large majority of applications to the additional courses are from applicants living in Scotland and the increase indicated in Scottish domiciled applicants during the 2015 cycle is substantially a result of these changes.

To help comparisons through time, additional tables are available on the UCAS website that exclude any applications made by applicants to subject group 'X1' at Scottish providers. These tables provide a better 'like for like' comparison particularly when considering Scottish domiciled applicants and Scottish providers.

Counts of the number of applicants reported have been rounded to the nearest 10 applicants, this may result in instances where totals do not equal the sum of the components. Proportional changes have been rounded to the nearest whole percentage point.

Age

This statistical release uses country-specific age definitions which align with the cut off points for school/college cohorts within the different administrations of the UK. For England and Wales ages are defined on the 31 August, for Northern Ireland on the 1 July and for Scotland on the 28 February the following year. Defining ages in this way matches the assignment of children to school cohorts. For applicants outside of the UK the cohort cut off for England and Wales has been used.

Applicant

A person who has made an application in the UCAS system during the cycle reported (including applications for deferred entry). Records of prior acceptance (RPAs) are excluded.

Application

An application to a course at a provider made by an applicant in the UCAS main scheme. Applicants may make up to five main scheme applications.

Country of provider

An applicant may be counted once for each provider country they have applied to in the main scheme. If an applicant has applied to providers in multiple countries then the applicant is counted once within each country of provider applied to.

This statistical release excludes a small number of applications to a provider based in the EU.

Domicile

Declared area of permanent residence. The Channel Islands and the Isle of Man have been assigned as 'Not EU'.

First time applicant

An applicant that did not apply to the UCAS scheme in the previous cycle.

Main scheme

The main UCAS application scheme through which up to five providers/courses can be applied to. This opens in September and closes to new applications on 30 June the following year.

Reapplicant

An applicant that applied to the UCAS scheme in the previous cycle.

I.1.13 Technical notes and definitions: continued

Subject group

The JACS3 classification used to classify courses into subject groups.

Tariff group of provider

Providers are grouped as higher, medium or lower tariff based on their average levels of attainment of their accepted applicants (summarised through UCAS Tariff points) in recent cycles. Each group of providers accounted for around a third of all UK 18 year old acceptances in recent cycles.