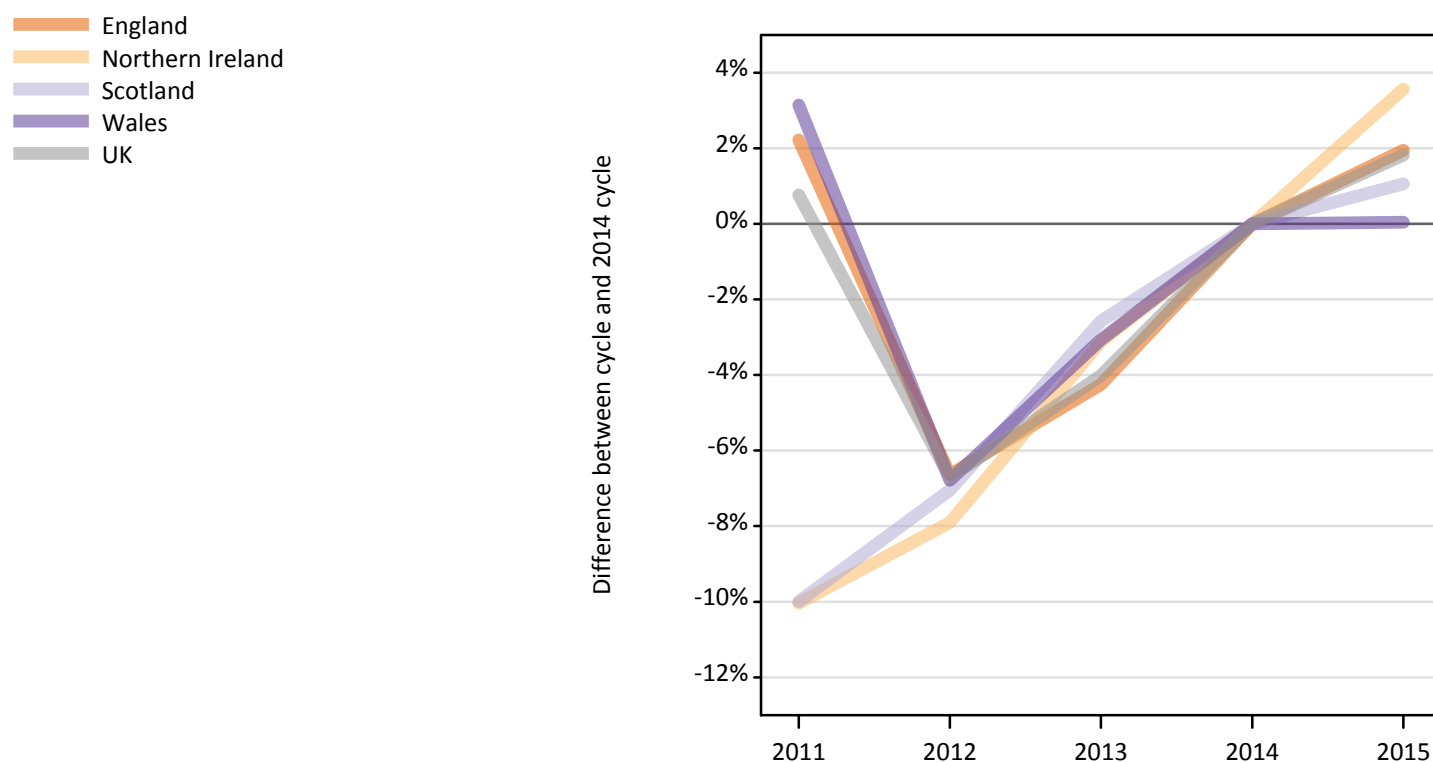


June Deadline Context: Providers

Applications by country and type of provider at the 30 June deadline (No Scot. X1)

IX.5.1 Applications by domicile and country of provider : All domiciles

Difference between cycle and 2014 cycle



IX.5.2 Applications by domicile and country of provider : All domiciles

Domicile of applicant and country of provider		2011	2012	2013	2014	2015
All domiciles	England	2,419,570	2,210,010	2,266,440	2,367,110	2,413,220
	Northern Ireland	57,210	58,570	61,610	63,590	65,860
	Scotland	251,960	260,220	272,760	279,950	282,920
	Wales	112,910	102,040	106,110	109,470	109,520
	UK	2,841,650	2,630,840	2,706,910	2,820,120	2,871,510

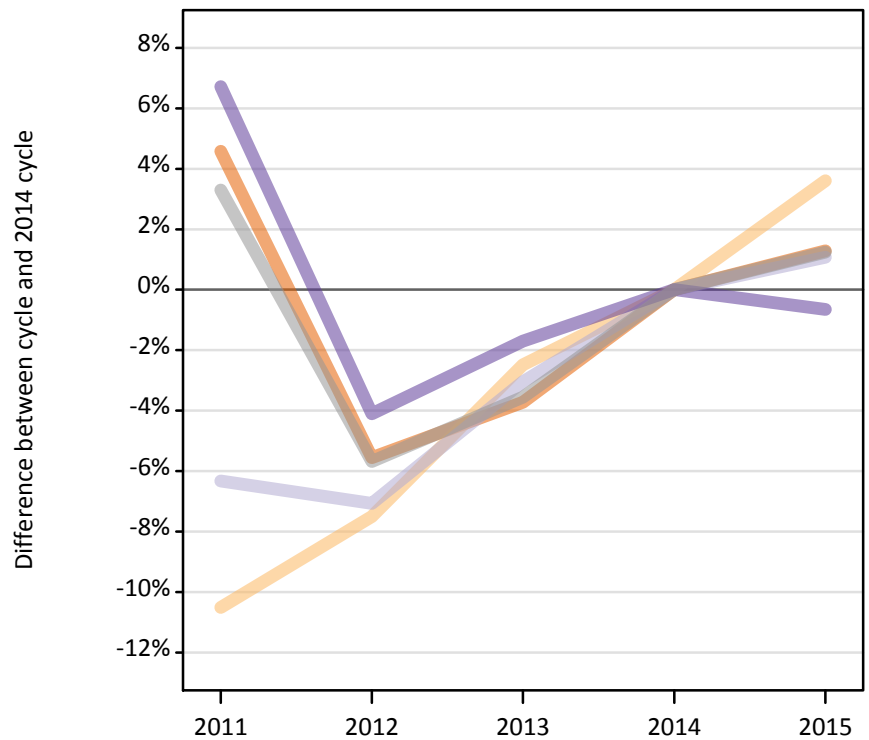
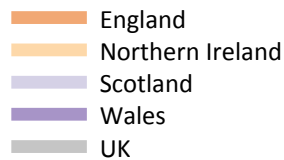
IX.5.3 Applications by domicile and country of provider : All domiciles

Difference between cycle and 2014 cycle

Domicile of applicant and country of provider		2011	2012	2013	2014	2015
All domiciles	England	2%	-7%	-4%	0%	2%
	Northern Ireland	-10%	-8%	-3%	0%	4%
	Scotland	-10%	-7%	-3%	0%	1%
	Wales	3%	-7%	-3%	0%	0%
	UK	1%	-7%	-4%	0%	2%

IX.5.4 Applications by domicile and country of provider : UK

Difference between cycle and 2014 cycle



IX.5.5 Applications by domicile and country of provider : UK

Domicile of applicant and country of provider		2011	2012	2013	2014	2015
UK	England	2,045,740	1,847,430	1,883,260	1,956,080	1,981,180
	Northern Ireland	52,190	53,940	56,870	58,320	60,420
	Scotland	198,720	197,140	205,680	212,150	214,440
	Wales	100,070	89,930	92,180	93,770	93,170
	UK	2,396,720	2,188,440	2,237,990	2,320,320	2,349,200

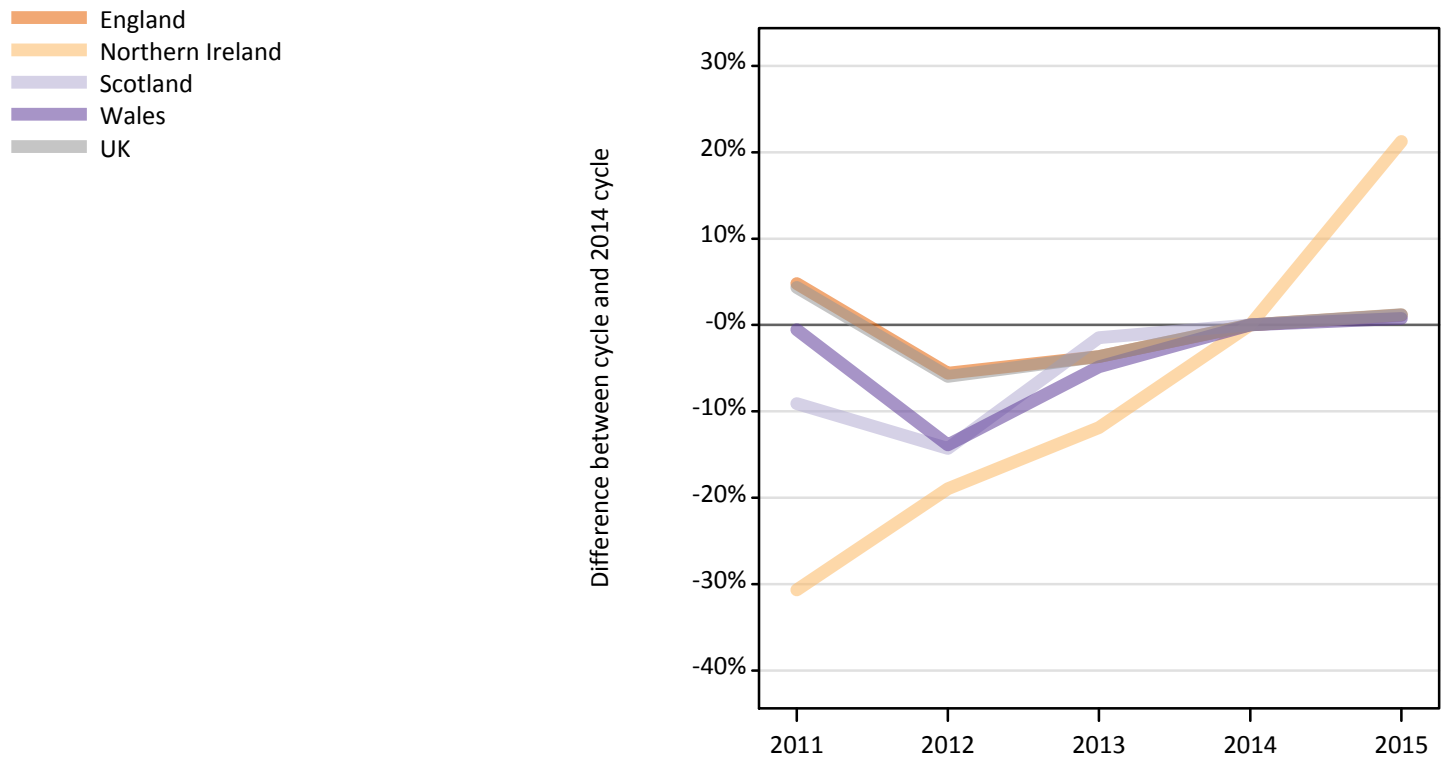
IX.5.6 Applications by domicile and country of provider : UK

Difference between cycle and 2014 cycle

Domicile of applicant and country of provider		2011	2012	2013	2014	2015
UK	England	5%	-6%	-4%	0%	1%
	Northern Ireland	-11%	-8%	-2%	0%	4%
	Scotland	-6%	-7%	-3%	0%	1%
	Wales	7%	-4%	-2%	0%	-1%
	UK	3%	-6%	-4%	0%	1%

IX.5.7 Applications by domicile and country of provider : England

Difference between cycle and 2014 cycle



IX.5.8 Applications by domicile and country of provider : England

Domicile of applicant and country of provider		2011	2012	2013	2014	2015
England	England	1,957,100	1,763,610	1,799,080	1,867,540	1,889,510
	Northern Ireland	1,930	2,260	2,460	2,790	3,380
	Scotland	33,190	31,280	35,960	36,500	36,900
	Wales	51,100	44,240	48,870	51,370	51,760
	UK	2,043,310	1,841,390	1,886,370	1,958,200	1,981,550

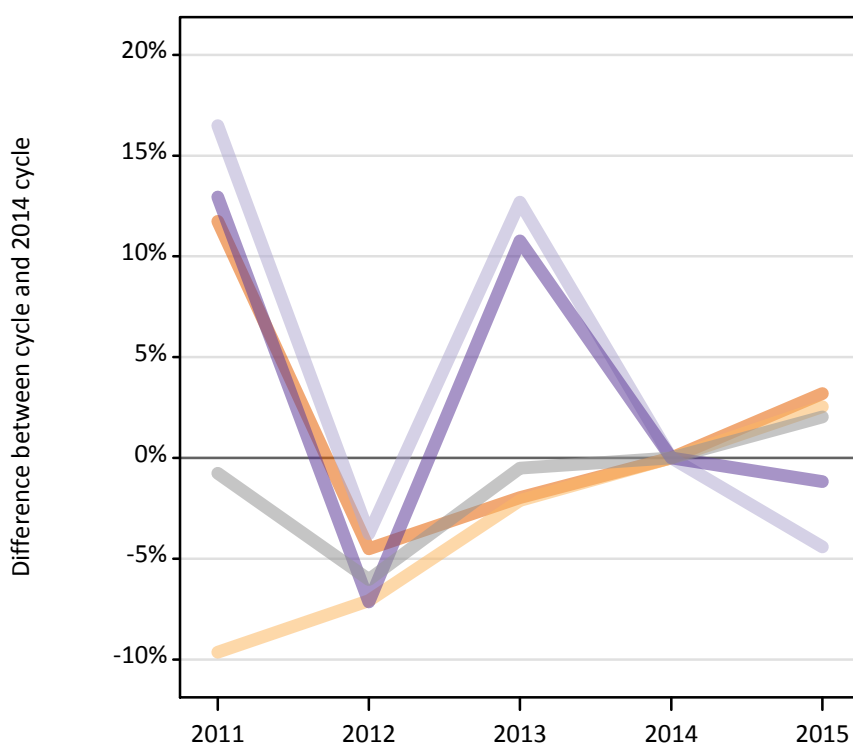
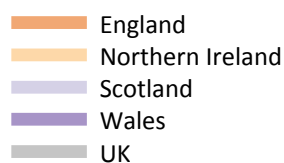
IX.5.9 Applications by domicile and country of provider : England

Difference between cycle and 2014 cycle

Domicile of applicant and country of provider		2011	2012	2013	2014	2015
England	England	5%	-6%	-4%	0%	1%
	Northern Ireland	-31%	-19%	-12%	0%	21%
	Scotland	-9%	-14%	-1%	0%	1%
	Wales	-1%	-14%	-5%	0%	1%
	UK	4%	-6%	-4%	0%	1%

IX.5.10 Applications by domicile and country of provider : Northern Ireland

Difference between cycle and 2014 cycle



IX.5.11 Applications by domicile and country of provider : Northern Ireland

Domicile of applicant and country of provider		2011	2012	2013	2014	2015
Northern Ireland	England	29,210	24,960	25,620	26,140	26,970
	Northern Ireland	49,960	51,380	54,130	55,300	56,700
	Scotland	9,980	8,250	9,660	8,570	8,190
	Wales	1,340	1,100	1,320	1,190	1,180
	UK	90,490	85,690	90,730	91,190	93,040

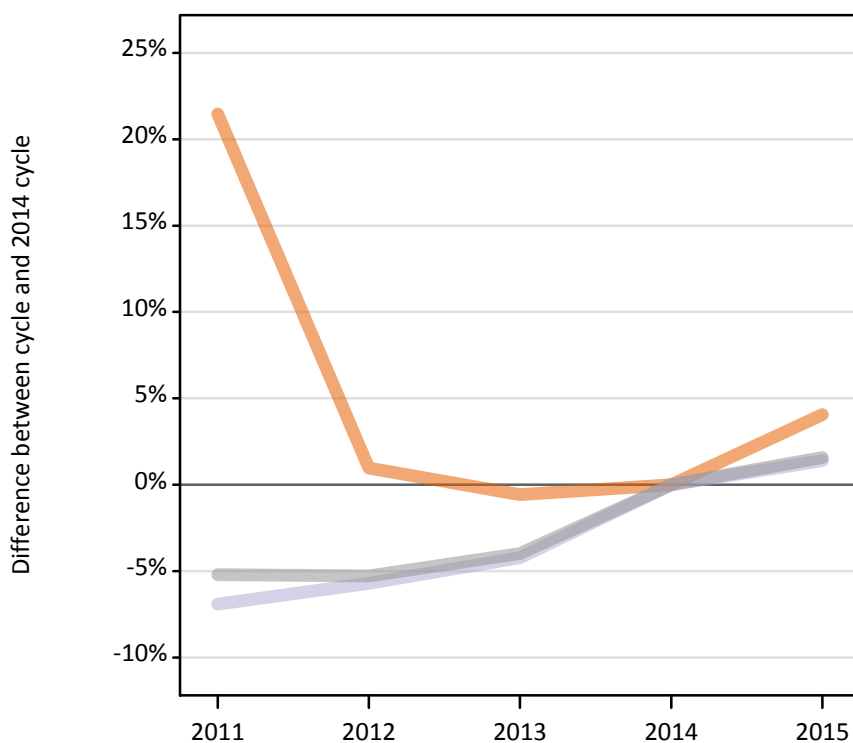
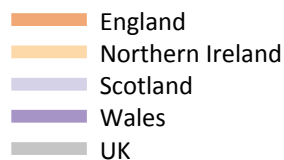
IX.5.12 Applications by domicile and country of provider : Northern Ireland

Difference between cycle and 2014 cycle

Domicile of applicant and country of provider		2011	2012	2013	2014	2015
Northern Ireland	England	12%	-5%	-2%	0%	3%
	Northern Ireland	-10%	-7%	-2%	0%	3%
	Scotland	16%	-4%	13%	0%	-4%
	Wales	13%	-7%	11%	0%	-1%
	UK	-1%	-6%	-1%	0%	2%

IX.5.13 Applications by domicile and country of provider : Scotland

Difference between cycle and 2014 cycle



IX.5.14 Applications by domicile and country of provider : Scotland

Domicile of applicant and country of provider		2011	2012	2013	2014	2015
Scotland	England	11,810	9,810	9,660	9,720	10,120
	Northern Ireland	220	210	200	140	230
	Scotland	154,530	156,530	158,990	165,990	168,290
	Wales	390	250	250	260	250
	UK	166,940	166,800	169,110	176,110	178,880

IX.5.15 Applications by domicile and country of provider : Scotland

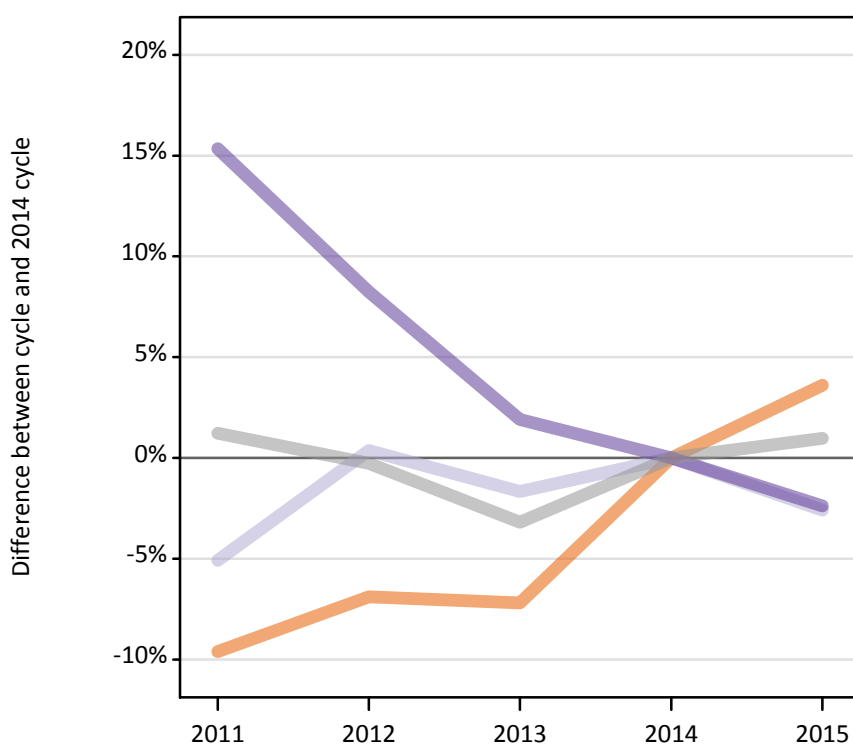
Difference between cycle and 2014 cycle

Domicile of applicant and country of provider		2011	2012	2013	2014	2015
Scotland	England	21%	1%	-1%	0%	4%
	Northern Ireland	52%	48%	41%	0%	60%
	Scotland	-7%	-6%	-4%	0%	1%
	Wales	52%	-2%	-3%	0%	-5%
	UK	-5%	-5%	-4%	0%	2%

IX.5.16 Applications by domicile and country of provider : Wales

Difference between cycle and 2014 cycle

England
 Northern Ireland
 Scotland
 Wales
 UK



IX.5.17 Applications by domicile and country of provider : Wales

Domicile of applicant and country of provider		2011	2012	2013	2014	2015
Wales	England	47,630	49,050	48,900	52,690	54,590
	Northern Ireland	80	90	90	90	110
	Scotland	1,030	1,090	1,060	1,080	1,050
	Wales	47,240	44,330	41,740	40,960	39,990
	UK	95,980	94,570	91,790	94,820	95,740

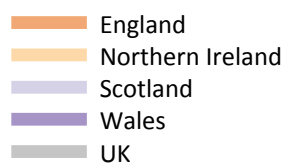
IX.5.18 Applications by domicile and country of provider : Wales

Difference between cycle and 2014 cycle

Domicile of applicant and country of provider		2011	2012	2013	2014	2015
Wales	England	-10%	-7%	-7%	0%	4%
	Northern Ireland	-14%	1%	-6%	0%	19%
	Scotland	-5%	0%	-2%	0%	-3%
	Wales	15%	8%	2%	0%	-2%
	UK	1%	-0%	-3%	0%	1%

IX.5.19 Applications by domicile and country of provider : EU (excluding UK)

Difference between cycle and 2014 cycle



IX.5.20 Applications by domicile and country of provider : EU (excluding UK)

Domicile of applicant and country of provider		2011	2012	2013	2014	2015
EU (excluding UK)	England	156,970	126,840	132,210	142,780	157,920
	Northern Ireland	4,000	3,570	3,550	3,680	3,440
	Scotland	36,440	43,210	46,030	45,530	45,460
	Wales	5,390	4,550	4,980	5,590	6,240
	UK	202,800	178,180	186,770	197,580	213,060

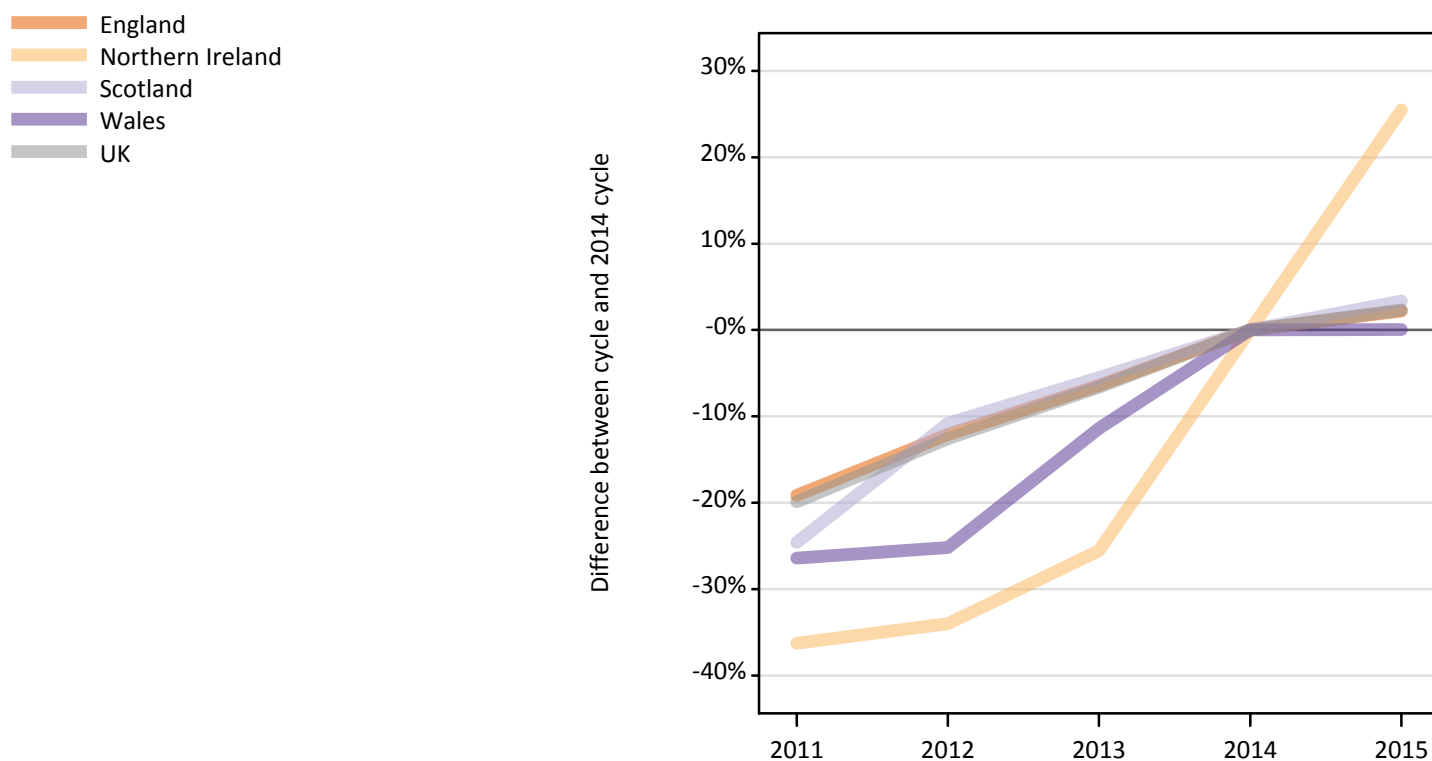
IX.5.21 Applications by domicile and country of provider : EU (excluding UK)

Difference between cycle and 2014 cycle

Domicile of applicant and country of provider		2011	2012	2013	2014	2015
EU (excluding UK)	England	10%	-11%	-7%	0%	11%
	Northern Ireland	9%	-3%	-3%	0%	-6%
	Scotland	-20%	-5%	1%	0%	-0%
	Wales	-3%	-19%	-11%	0%	12%
	UK	3%	-10%	-5%	0%	8%

IX.5.22 Applications by domicile and country of provider : Not EU

Difference between cycle and 2014 cycle



IX.5.23 Applications by domicile and country of provider : Not EU

Domicile of applicant and country of provider		2011	2012	2013	2014	2015
Not EU	England	216,870	235,730	250,970	268,250	274,120
	Northern Ireland	1,020	1,050	1,190	1,590	2,000
	Scotland	16,800	19,870	21,050	22,280	23,020
	Wales	7,440	7,560	8,950	10,110	10,110
	UK	242,120	264,220	282,160	302,220	309,250

IX.5.24 Applications by domicile and country of provider : Not EU

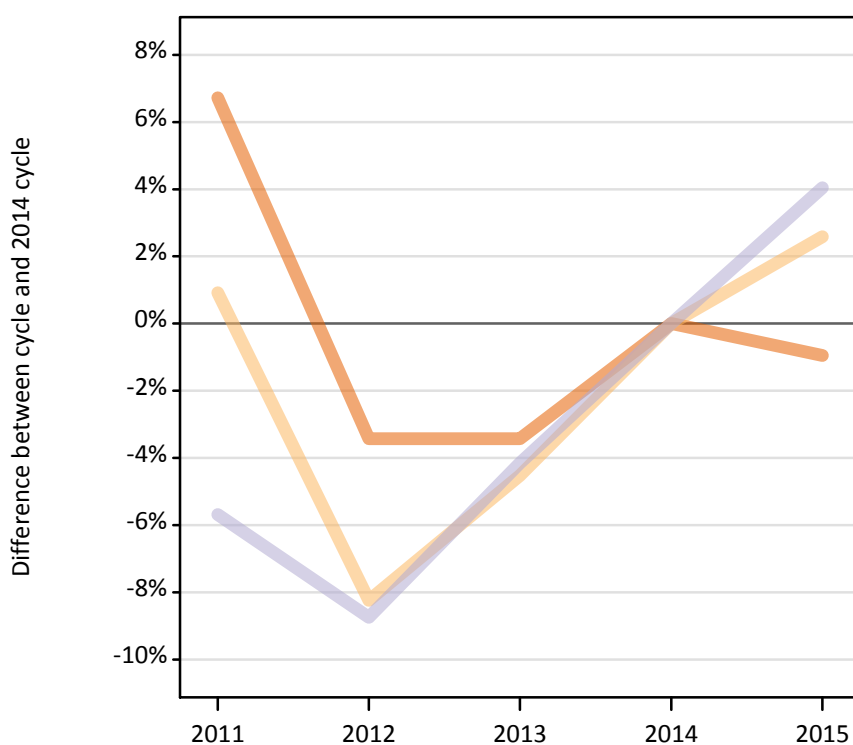
Difference between cycle and 2014 cycle

Domicile of applicant and country of provider		2011	2012	2013	2014	2015
Not EU	England	-19%	-12%	-6%	0%	2%
	Northern Ireland	-36%	-34%	-26%	0%	25%
	Scotland	-25%	-11%	-6%	0%	3%
	Wales	-26%	-25%	-11%	0%	0%
	UK	-20%	-13%	-7%	0%	2%

IX.5.25 Applications by domicile and tariff group of provider : All domiciles

Difference between cycle and 2014 cycle

- 1. Lower tariff
- 2. Medium tariff
- 3. Higher tariff



IX.5.26 Applications by domicile and tariff group of provider : All domiciles

Domicile of applicant and tariff group of provider		2011	2012	2013	2014	2015
All domiciles	1. Lower tariff	1,062,850	961,740	961,740	995,890	986,390
	2. Medium tariff	889,860	809,060	841,810	881,730	904,510
	3. Higher tariff	888,940	860,040	903,370	942,500	980,610
	All	2,841,650	2,630,840	2,706,910	2,820,120	2,871,510

IX.5.27 Applications by domicile and tariff group of provider : All domiciles

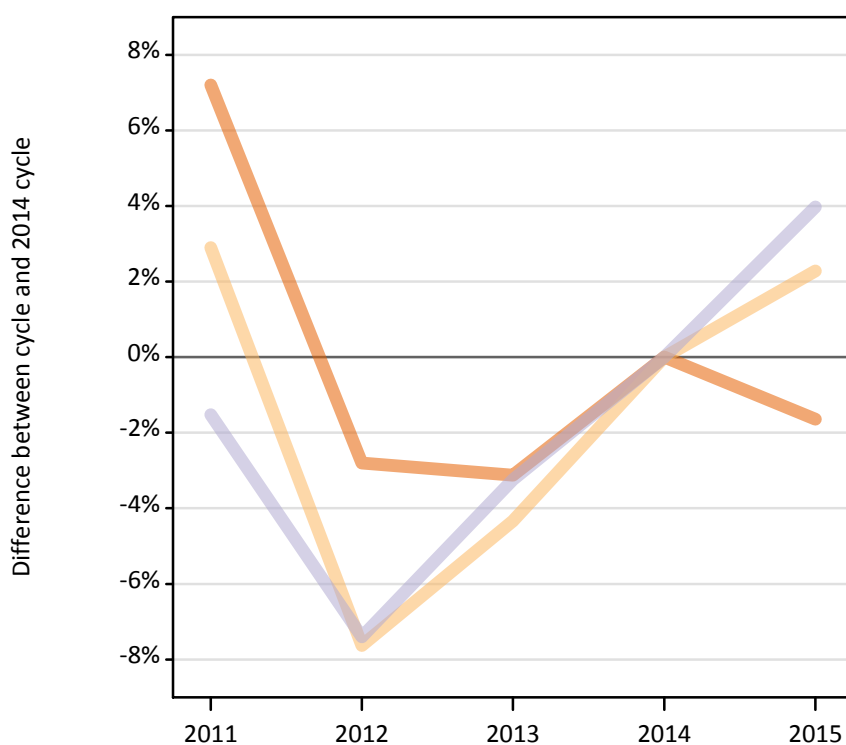
Difference between cycle and 2014 cycle

Domicile of applicant and tariff group of provider		2011	2012	2013	2014	2015
All domiciles	1. Lower tariff	7%	-3%	-3%	0%	-1%
	2. Medium tariff	1%	-8%	-5%	0%	3%
	3. Higher tariff	-6%	-9%	-4%	0%	4%
	All	1%	-7%	-4%	0%	2%

IX.5.28 Applications by domicile and tariff group of provider : UK

Difference between cycle and 2014 cycle

- 1. Lower tariff
- 2. Medium tariff
- 3. Higher tariff



IX.5.29 Applications by domicile and tariff group of provider : UK

Domicile of applicant and tariff group of provider		2011	2012	2013	2014	2015
UK	1. Lower tariff	968,840	878,410	875,470	903,720	888,890
	2. Medium tariff	764,850	686,590	711,090	743,320	760,270
	3. Higher tariff	663,030	623,440	651,430	673,280	700,040
	All	2,396,720	2,188,440	2,237,990	2,320,320	2,349,200

IX.5.30 Applications by domicile and tariff group of provider : UK

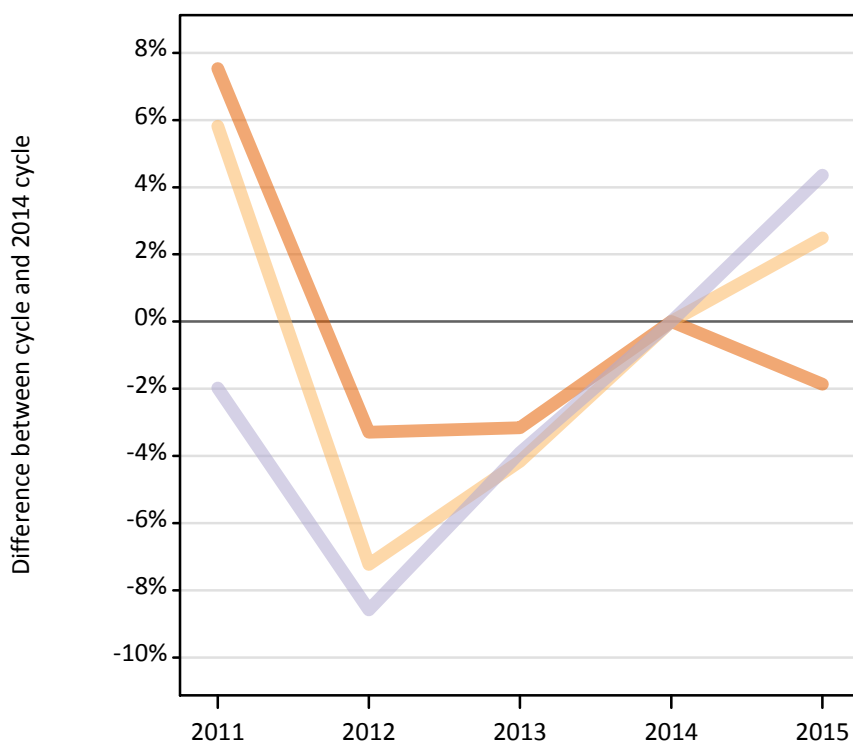
Difference between cycle and 2014 cycle

Domicile of applicant and tariff group of provider		2011	2012	2013	2014	2015
UK	1. Lower tariff	7%	-3%	-3%	0%	-2%
	2. Medium tariff	3%	-8%	-4%	0%	2%
	3. Higher tariff	-2%	-7%	-3%	0%	4%
	All	3%	-6%	-4%	0%	1%

IX.5.31 Applications by domicile and tariff group of provider : England

Difference between cycle and 2014 cycle

- 1. Lower tariff
- 2. Medium tariff
- 3. Higher tariff



IX.5.32 Applications by domicile and tariff group of provider : England

Domicile of applicant and tariff group of provider		2011	2012	2013	2014	2015
England	1. Lower tariff	879,780	791,220	792,340	818,170	802,900
	2. Medium tariff	625,610	548,480	566,640	591,240	605,940
	3. Higher tariff	537,930	501,680	527,390	548,800	572,700
	All	2,043,310	1,841,390	1,886,370	1,958,200	1,981,550

IX.5.33 Applications by domicile and tariff group of provider : England

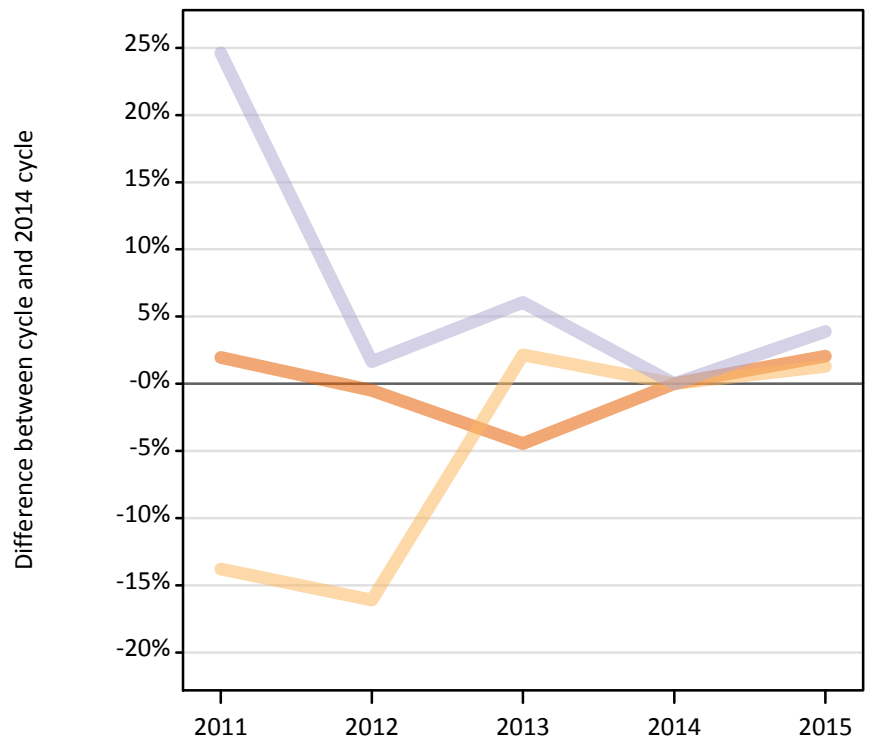
Difference between cycle and 2014 cycle

Domicile of applicant and tariff group of provider		2011	2012	2013	2014	2015
England	1. Lower tariff	8%	-3%	-3%	0%	-2%
	2. Medium tariff	6%	-7%	-4%	0%	2%
	3. Higher tariff	-2%	-9%	-4%	0%	4%
	All	4%	-6%	-4%	0%	1%

IX.5.34 Applications by domicile and tariff group of provider : Northern Ireland

Difference between cycle and 2014 cycle

- 1. Lower tariff
- 2. Medium tariff
- 3. Higher tariff



IX.5.35 Applications by domicile and tariff group of provider : Northern Ireland

Domicile of applicant and tariff group of provider		2011	2012	2013	2014	2015
Northern Ireland	1. Lower tariff	45,160	44,080	42,320	44,290	45,210
	2. Medium tariff	29,420	28,630	34,870	34,130	34,570
	3. Higher tariff	15,910	12,980	13,540	12,770	13,260
	All	90,490	85,690	90,730	91,190	93,040

IX.5.36 Applications by domicile and tariff group of provider : Northern Ireland

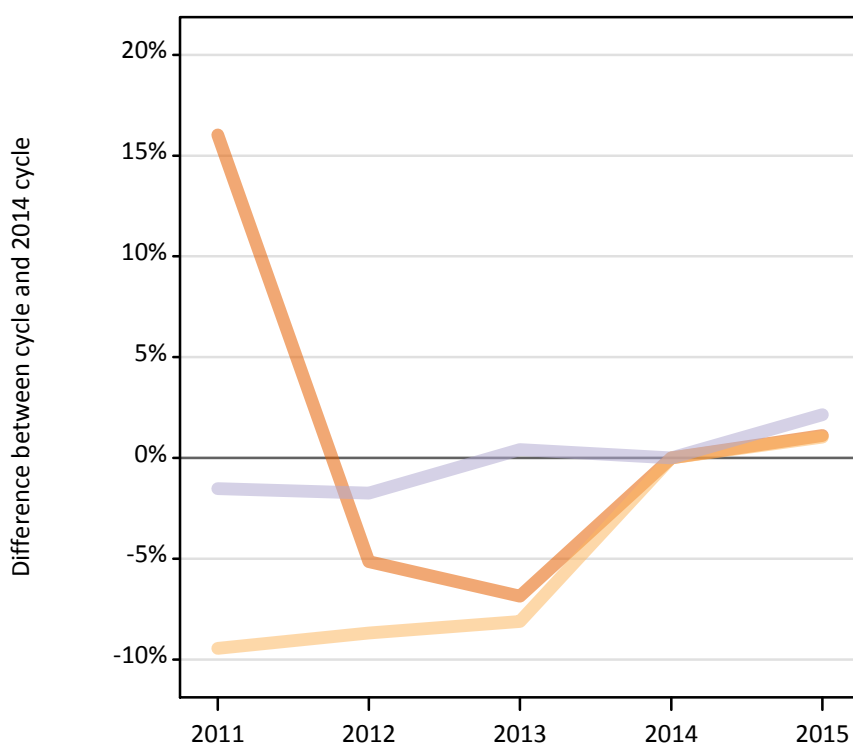
Difference between cycle and 2014 cycle

Domicile of applicant and tariff group of provider		2011	2012	2013	2014	2015
Northern Ireland	1. Lower tariff	2%	-0%	-4%	0%	2%
	2. Medium tariff	-14%	-16%	2%	0%	1%
	3. Higher tariff	25%	2%	6%	0%	4%
	All	-1%	-6%	-1%	0%	2%

IX.5.37 Applications by domicile and tariff group of provider : Scotland

Difference between cycle and 2014 cycle

- 1. Lower tariff
- 2. Medium tariff
- 3. Higher tariff



IX.5.38 Applications by domicile and tariff group of provider : Scotland

Domicile of applicant and tariff group of provider		2011	2012	2013	2014	2015
Scotland	1. Lower tariff	3,320	2,710	2,660	2,860	2,890
	2. Medium tariff	79,940	80,610	81,120	88,280	89,190
	3. Higher tariff	83,690	83,490	85,330	84,970	86,800
	All	166,940	166,800	169,110	176,110	178,880

IX.5.39 Applications by domicile and tariff group of provider : Scotland

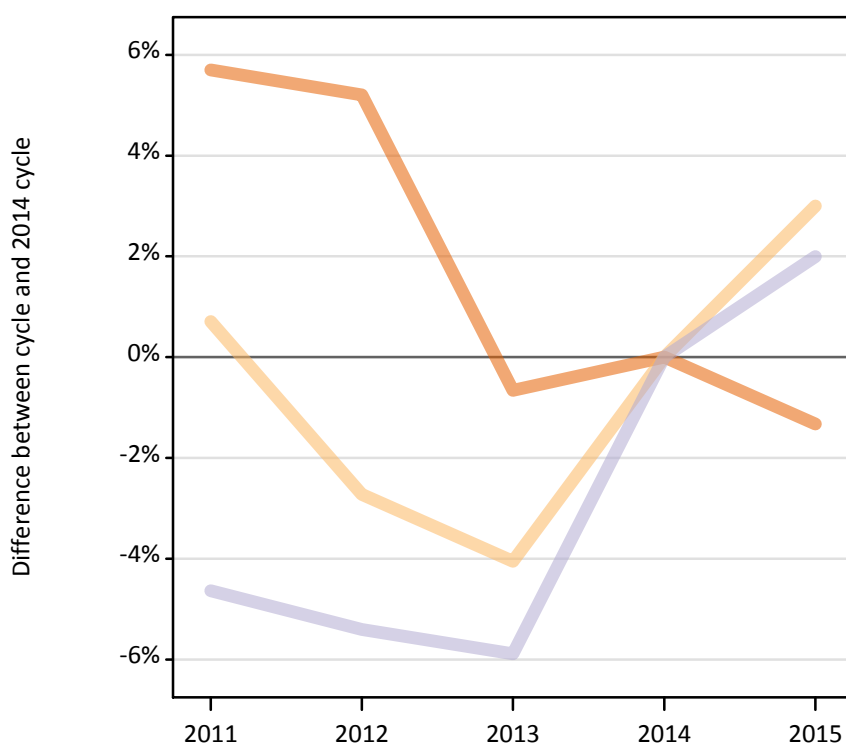
Difference between cycle and 2014 cycle

Domicile of applicant and tariff group of provider		2011	2012	2013	2014	2015
Scotland	1. Lower tariff	16%	-5%	-7%	0%	1%
	2. Medium tariff	-9%	-9%	-8%	0%	1%
	3. Higher tariff	-2%	-2%	0%	0%	2%
	All	-5%	-5%	-4%	0%	2%

IX.5.40 Applications by domicile and tariff group of provider : Wales

Difference between cycle and 2014 cycle

- 1. Lower tariff
- 2. Medium tariff
- 3. Higher tariff



IX.5.41 Applications by domicile and tariff group of provider : Wales

Domicile of applicant and tariff group of provider		2011	2012	2013	2014	2015
Wales	1. Lower tariff	40,590	40,400	38,150	38,400	37,890
	2. Medium tariff	29,880	28,860	28,470	29,670	30,560
	3. Higher tariff	25,510	25,300	25,170	26,750	27,280
	All	95,980	94,570	91,790	94,820	95,740

IX.5.42 Applications by domicile and tariff group of provider : Wales

Difference between cycle and 2014 cycle

Domicile of applicant and tariff group of provider		2011	2012	2013	2014	2015
Wales	1. Lower tariff	6%	5%	-1%	0%	-1%
	2. Medium tariff	1%	-3%	-4%	0%	3%
	3. Higher tariff	-5%	-5%	-6%	0%	2%
	All	1%	-0%	-3%	0%	1%

IX.5.43 Applications by domicile and tariff group of provider : EU (excluding UK)

Difference between cycle and 2014 cycle

- 1. Lower tariff
- 2. Medium tariff
- 3. Higher tariff



IX.5.44 Applications by domicile and tariff group of provider : EU (excluding UK)

Domicile of applicant and tariff group of provider		2011	2012	2013	2014	2015
EU (excluding UK)	1. Lower tariff	56,200	44,440	45,790	48,660	53,550
	2. Medium tariff	59,330	50,280	52,820	55,880	59,750
	3. Higher tariff	87,270	83,470	88,160	93,030	99,760
	All	202,800	178,180	186,770	197,580	213,060

IX.5.45 Applications by domicile and tariff group of provider : EU (excluding UK)

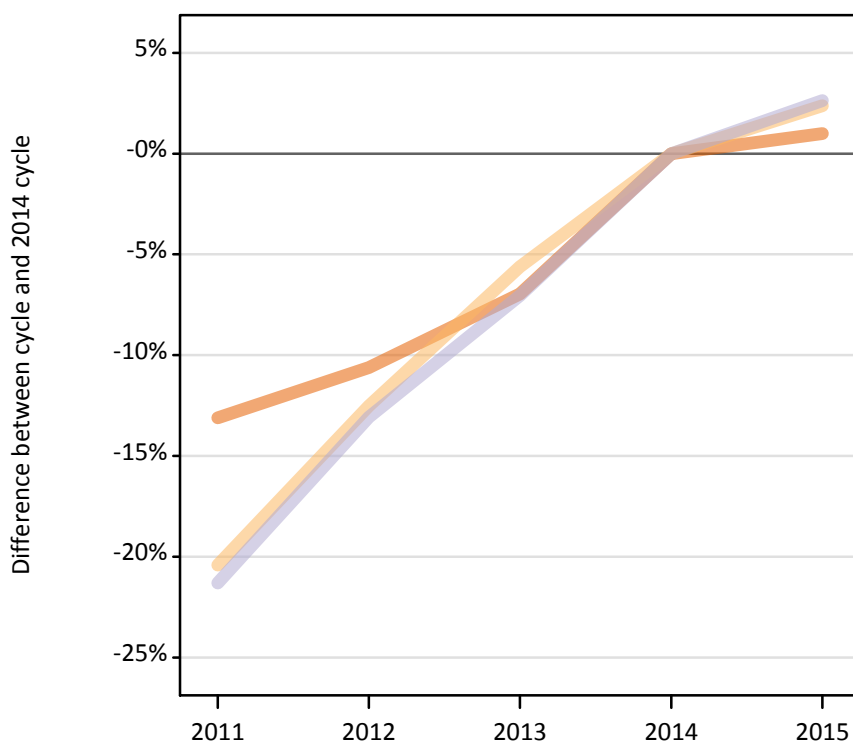
Difference between cycle and 2014 cycle

Domicile of applicant and tariff group of provider		2011	2012	2013	2014	2015
EU (excluding UK)	1. Lower tariff	15%	-9%	-6%	0%	10%
	2. Medium tariff	6%	-10%	-5%	0%	7%
	3. Higher tariff	-6%	-10%	-5%	0%	7%
	All	3%	-10%	-5%	0%	8%

IX.5.46 Applications by domicile and tariff group of provider : Not EU

Difference between cycle and 2014 cycle

- 1. Lower tariff
- 2. Medium tariff
- 3. Higher tariff



IX.5.47 Applications by domicile and tariff group of provider : Not EU

Domicile of applicant and tariff group of provider		2011	2012	2013	2014	2015
Not EU	1. Lower tariff	37,800	38,890	40,480	43,510	43,940
	2. Medium tariff	65,690	72,200	77,900	82,530	84,500
	3. Higher tariff	138,630	153,130	163,780	176,180	180,810
	All	242,120	264,220	282,160	302,220	309,250

IX.5.48 Applications by domicile and tariff group of provider : Not EU

Difference between cycle and 2014 cycle

Domicile of applicant and tariff group of provider		2011	2012	2013	2014	2015
Not EU	1. Lower tariff	-13%	-11%	-7%	0%	1%
	2. Medium tariff	-20%	-13%	-6%	0%	2%
	3. Higher tariff	-21%	-13%	-7%	0%	3%
	All	-20%	-13%	-7%	0%	2%

IX.5.49 Technical notes and definitions

These additional tables have been produced to help comparisons through time, particularly when considering Scottish domiciled applicants and Scottish providers.

In 2015, a set of courses relating to teacher training that historically would only have been available through UCAS Teacher Training, and therefore not previously counted in the scope of this statistical release, were brought into the undergraduate UCAS scheme. These courses are all offered by providers based in Scotland and are in the JACS3 detailed subject reporting grouping of 'X1'. The large majority of applications to these courses are from applicants living in Scotland.

These additional tables exclude any applications made by applicants to subject group 'X1' at Scottish providers and provide a better 'like for like' comparison particularly when considering Scottish domiciled applicants and Scottish providers. The primary deadline applicant statistics which include all applications to Scottish providers are available upon the UCAS website.

Applicants have been able to submit applications for all 2015 courses since early September. People who submit their applications to UCAS by the January deadline are considered 'on time' applicants for the large majority of courses offered through UCAS. Some art and design courses have a later deadline of 24 March. By definition all main scheme applications have been received by the 30 June deadline.

Counts of the number of applicants reported have been rounded to the nearest 10 applicants, this may result in instances where totals do not equal the sum of the components. Proportional changes have been rounded to the nearest whole percentage point.

Age

This statistical release uses country-specific age definitions which align with the cut off points for school/college cohorts within the different administrations of the UK. For England and Wales ages are defined on the 31 August, for Northern Ireland on the 1 July and for Scotland on the 28 February the following year. Defining ages in this way matches the assignment of children to school cohorts. For applicants outside of the UK the cohort cut off for England and Wales has been used.

Applicant

A person who has made an application in the UCAS system during the cycle reported (including applications for deferred entry). Records of prior acceptance (RPAs) are excluded.

Application

An application to a course at a provider made by an applicant in the UCAS main scheme. Applicants may make up to five main scheme applications.

Country of provider

An applicant may be counted once for each provider country they have applied to in the main scheme. If an applicant has applied to providers in multiple countries then the applicant is counted once within each country of provider applied to.

This statistical release excludes a small number of applications to a provider based in the EU.

Domicile

Declared area of permanent residence. The Channel Islands and the Isle of Man have been assigned as 'Not EU'.

First time applicant

An applicant that did not apply to the UCAS scheme in the previous cycle.

Main scheme

The main UCAS application scheme through which up to five providers/courses can be applied to. This opens in September and closes to new applications on 30 June the following year.

Reapplicant

An applicant that applied to the UCAS scheme in the previous cycle.

IX.5.50 Technical notes and definitions: continued

Subject group

The JACS3 classification used to classify courses into subject groups.

Tariff group of provider

Providers are grouped as higher, medium or lower tariff based on their average levels of attainment of their accepted applicants (summarised through UCAS Tariff points) in recent cycles. Each group of providers accounted for around a third of all UK 18 year old acceptances in recent cycles.