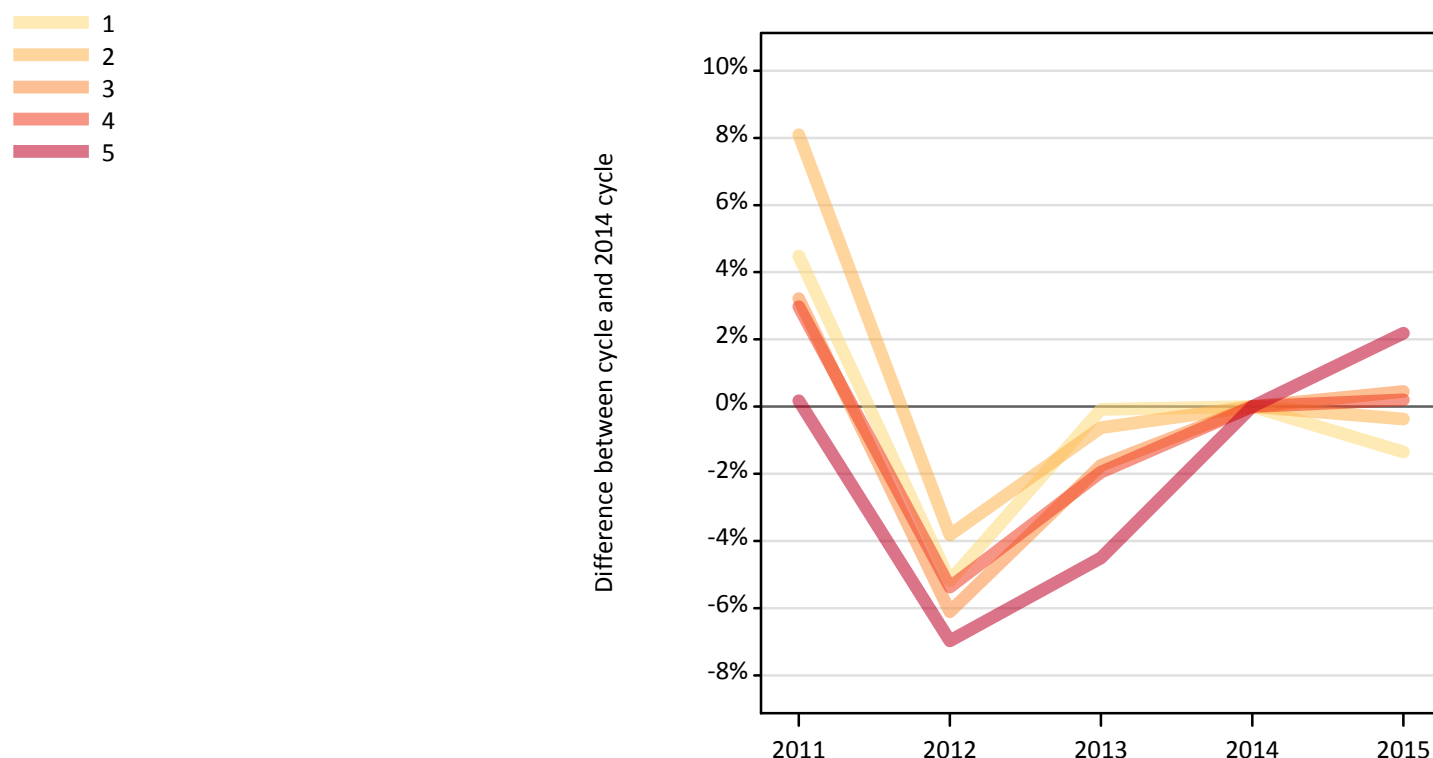


June Deadline Context: Applications

Applicants by number of applications at the 30 June deadline (No Scot. X1)

IX.4.1 Applicants by domicile and number of applications made : All domiciles

Difference between cycle and 2014 cycle



IX.4.2 Applicants by domicile and number of applications made : All domiciles

Domicile and number of applications made by applicant		2011	2012	2013	2014	2015
All domiciles	1	69,930	63,470	66,880	66,940	66,030
	2	28,590	25,440	26,280	26,450	26,350
	3	35,620	32,400	33,910	34,510	34,670
	4	59,920	55,060	57,050	58,190	58,310
	5	473,600	439,810	451,510	472,800	483,110
	All	667,660	616,180	635,630	658,880	668,460

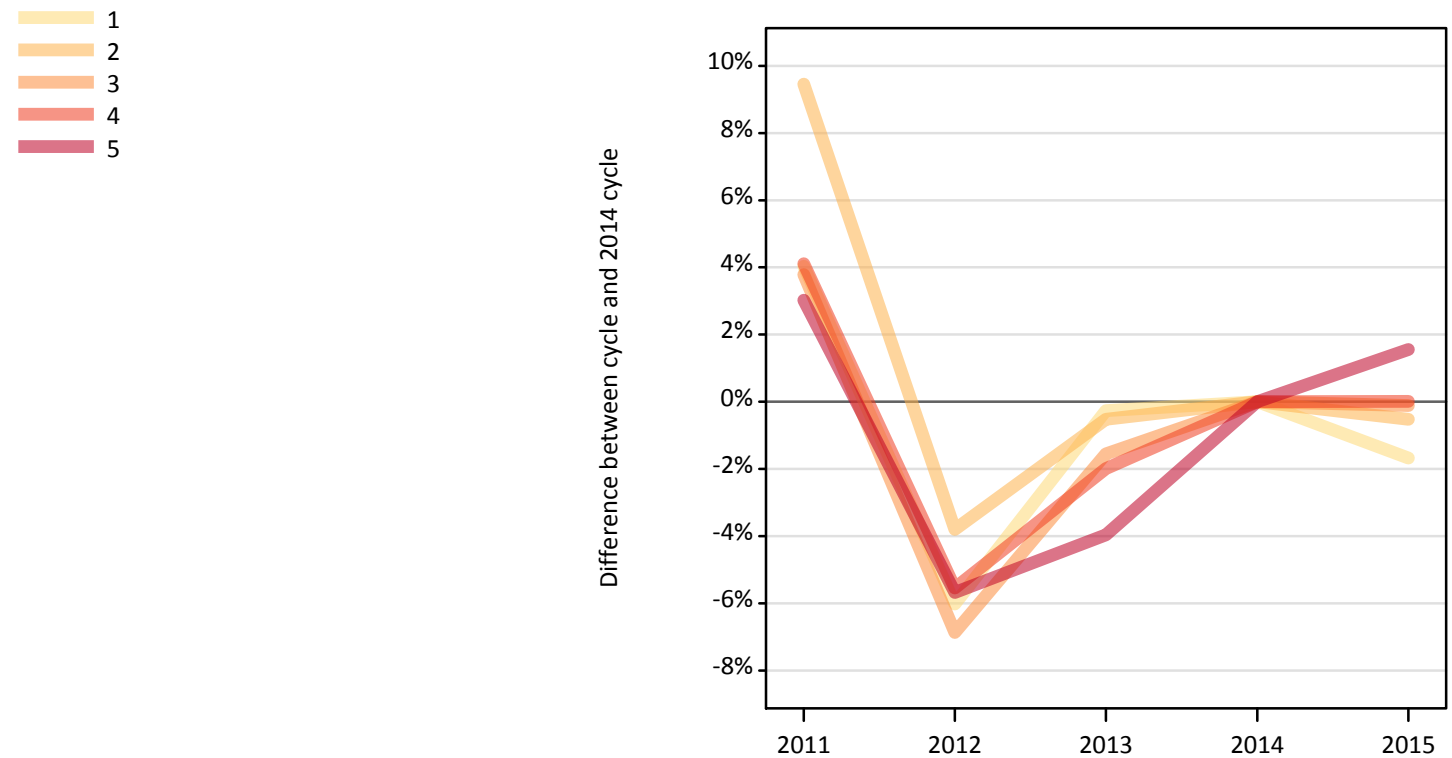
IX.4.3 Applicants by domicile and number of applications made : All domiciles

Difference between cycle and 2014 cycle

Domicile and number of applications made by applicant		2011	2012	2013	2014	2015
All domiciles	1	4%	-5%	-0%	0%	-1%
	2	8%	-4%	-1%	0%	-0%
	3	3%	-6%	-2%	0%	0%
	4	3%	-5%	-2%	0%	0%
	5	0%	-7%	-5%	0%	2%
	All	1%	-6%	-4%	0%	1%

IX.4.4 Applicants by domicile and number of applications made : UK

Difference between cycle and 2014 cycle



IX.4.5 Applicants by domicile and number of applications made : UK

Domicile and number of applications made by applicant		2011	2012	2013	2014	2015
UK	1	59,130	53,420	56,690	56,840	55,890
	2	24,590	21,620	22,350	22,470	22,350
	3	29,960	26,890	28,420	28,870	28,840
	4	51,450	46,680	48,440	49,420	49,430
	5	398,550	364,880	371,520	386,850	392,880
	All	563,680	513,480	527,410	544,450	549,380

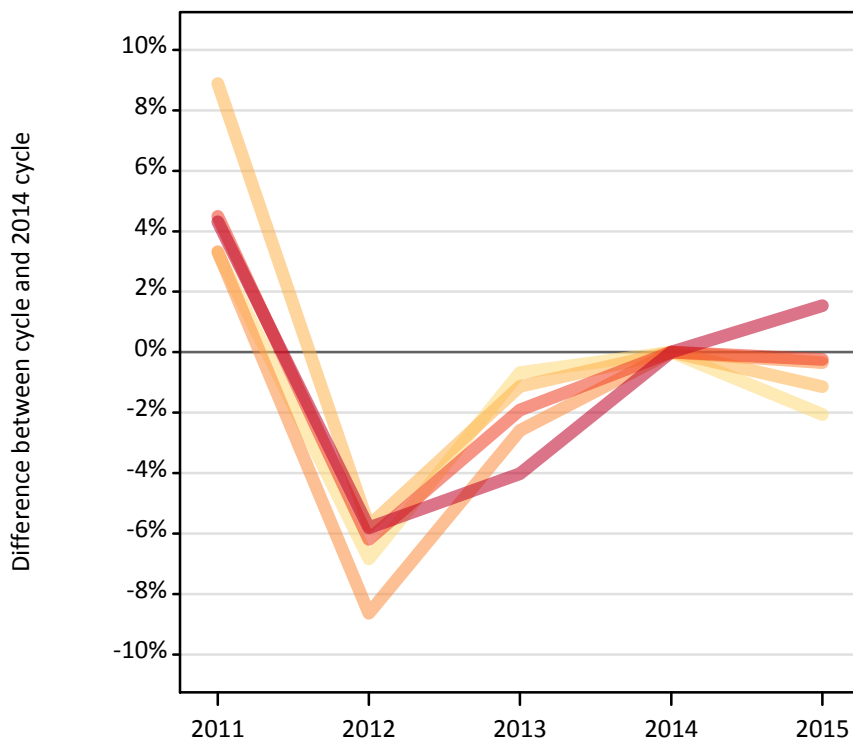
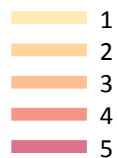
IX.4.6 Applicants by domicile and number of applications made : UK

Difference between cycle and 2014 cycle

Domicile and number of applications made by applicant		2011	2012	2013	2014	2015
UK	1	4%	-6%	-0%	0%	-2%
	2	9%	-4%	-1%	0%	-1%
	3	4%	-7%	-2%	0%	-0%
	4	4%	-6%	-2%	0%	0%
	5	3%	-6%	-4%	0%	2%
	All	4%	-6%	-3%	0%	1%

IX.4.7 Applicants by domicile and number of applications made : England

Difference between cycle and 2014 cycle



IX.4.8 Applicants by domicile and number of applications made : England

Domicile and number of applications made by applicant		2011	2012	2013	2014	2015
England	1	48,750	43,970	46,880	47,200	46,230
	2	18,970	16,420	17,230	17,420	17,230
	3	23,380	20,670	22,040	22,620	22,550
	4	41,870	37,590	39,310	40,070	39,980
	5	343,800	310,440	316,340	329,600	334,670
	All	476,770	429,100	441,790	456,920	460,640

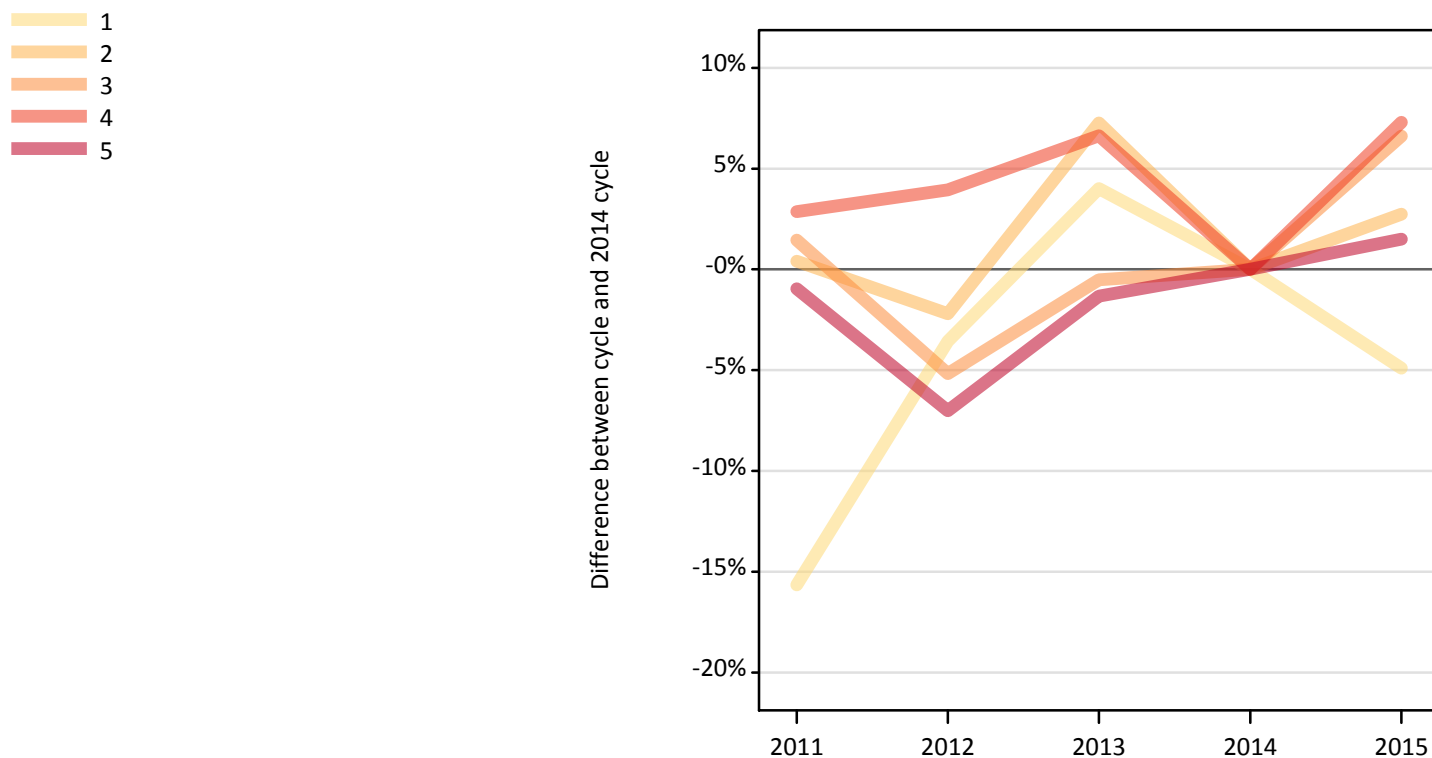
IX.4.9 Applicants by domicile and number of applications made : England

Difference between cycle and 2014 cycle

Domicile and number of applications made by applicant		2011	2012	2013	2014	2015
England	1	3%	-7%	-1%	0%	-2%
	2	9%	-6%	-1%	0%	-1%
	3	3%	-9%	-3%	0%	-0%
	4	4%	-6%	-2%	0%	-0%
	5	4%	-6%	-4%	0%	2%
	All	4%	-6%	-3%	0%	1%

IX.4.10 Applicants by domicile and number of applications made : Northern Ireland

Difference between cycle and 2014 cycle



IX.4.11 Applicants by domicile and number of applications made : Northern Ireland

Domicile and number of applications made by applicant		2011	2012	2013	2014	2015
Northern Ireland	1	950	1,080	1,170	1,120	1,070
	2	730	710	780	730	750
	3	980	920	960	970	1,030
	4	1,720	1,740	1,780	1,670	1,800
	5	15,650	14,690	15,590	15,800	16,040
	All	20,030	19,150	20,290	20,300	20,680

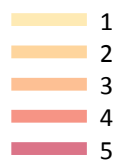
IX.4.12 Applicants by domicile and number of applications made : Northern Ireland

Difference between cycle and 2014 cycle

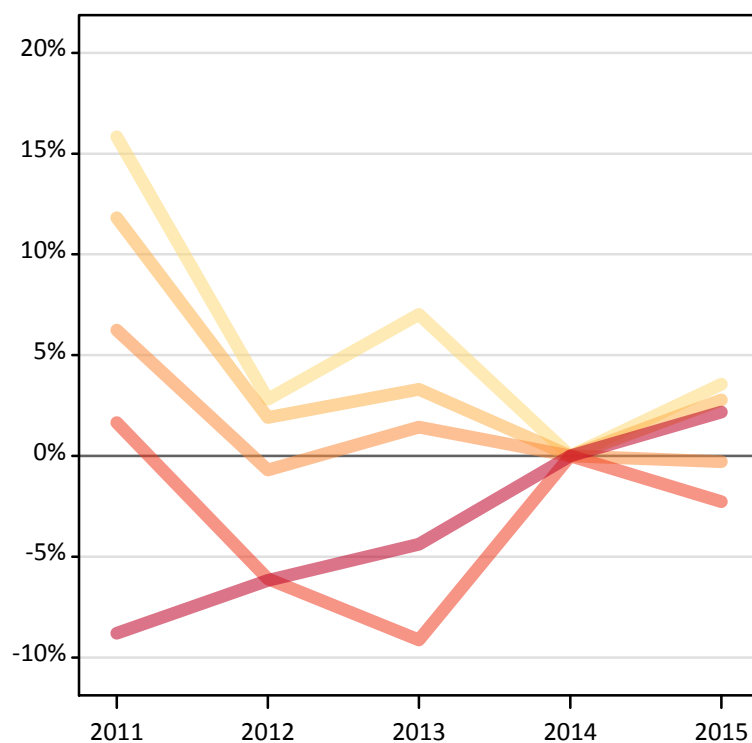
Domicile and number of applications made by applicant		2011	2012	2013	2014	2015
Northern Ireland	1	-16%	-4%	4%	0%	-5%
	2	0%	-2%	7%	0%	3%
	3	1%	-5%	-1%	0%	7%
	4	3%	4%	7%	0%	7%
	5	-1%	-7%	-1%	0%	1%
	All	-1%	-6%	-0%	0%	2%

IX.4.13 Applicants by domicile and number of applications made : Scotland

Difference between cycle and 2014 cycle



Difference between cycle and 2014 cycle



IX.4.14 Applicants by domicile and number of applications made : Scotland

Domicile and number of applications made by applicant		2011	2012	2013	2014	2015
Scotland	1	6,210	5,510	5,740	5,360	5,550
	2	3,390	3,090	3,130	3,030	3,110
	3	3,780	3,530	3,610	3,560	3,550
	4	5,220	4,830	4,670	5,140	5,020
	5	24,350	25,040	25,520	26,690	27,280
	All	42,950	42,000	42,670	43,780	44,510

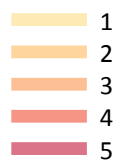
IX.4.15 Applicants by domicile and number of applications made : Scotland

Difference between cycle and 2014 cycle

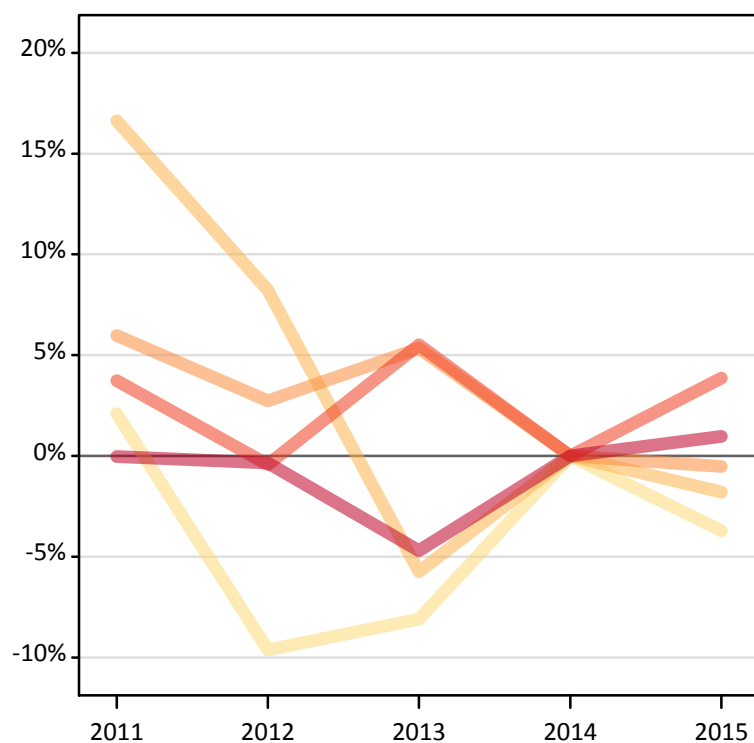
Domicile and number of applications made by applicant		2011	2012	2013	2014	2015
Scotland	1	16%	3%	7%	0%	4%
	2	12%	2%	3%	0%	3%
	3	6%	-1%	1%	0%	-0%
	4	2%	-6%	-9%	0%	-2%
	5	-9%	-6%	-4%	0%	2%
	All	-2%	-4%	-3%	0%	2%

IX.4.16 Applicants by domicile and number of applications made : Wales

Difference between cycle and 2014 cycle



Difference between cycle and 2014 cycle



IX.4.17 Applicants by domicile and number of applications made : Wales

Domicile and number of applications made by applicant		2011	2012	2013	2014	2015
Wales	1	3,210	2,840	2,890	3,150	3,030
	2	1,500	1,390	1,210	1,290	1,260
	3	1,830	1,770	1,820	1,720	1,710
	4	2,630	2,530	2,680	2,540	2,640
	5	14,750	14,700	14,060	14,760	14,900
	All	23,920	23,240	22,660	23,450	23,540

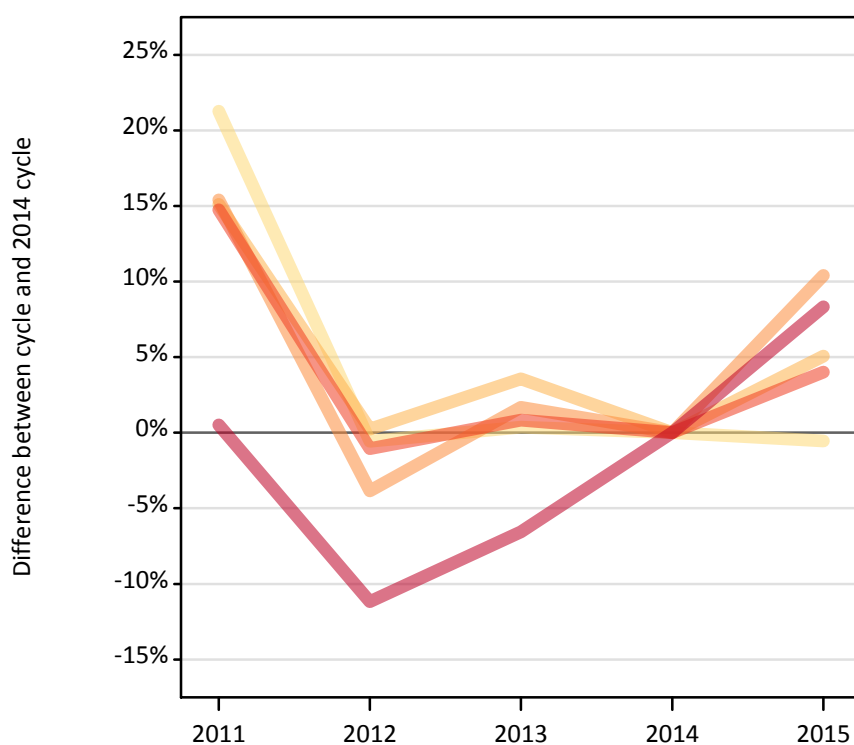
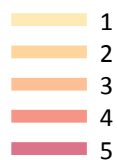
IX.4.18 Applicants by domicile and number of applications made : Wales

Difference between cycle and 2014 cycle

Domicile and number of applications made by applicant		2011	2012	2013	2014	2015
Wales	1	2%	-10%	-8%	0%	-4%
	2	17%	8%	-6%	0%	-2%
	3	6%	3%	5%	0%	-1%
	4	4%	-0%	6%	0%	4%
	5	-0%	-0%	-5%	0%	1%
	All	2%	-1%	-3%	0%	0%

IX.4.19 Applicants by domicile and number of applications made : EU (excluding UK)

Difference between cycle and 2014 cycle



IX.4.20 Applicants by domicile and number of applications made : EU (excluding UK)

Domicile and number of applications made by applicant		2011	2012	2013	2014	2015
EU (excluding UK)	1	5,160	4,230	4,270	4,260	4,230
	2	1,910	1,660	1,710	1,660	1,740
	3	2,190	1,830	1,930	1,900	2,100
	4	4,030	3,480	3,540	3,510	3,650
	5	34,230	30,250	31,820	34,050	36,890
	All	47,520	41,440	43,280	45,380	48,610

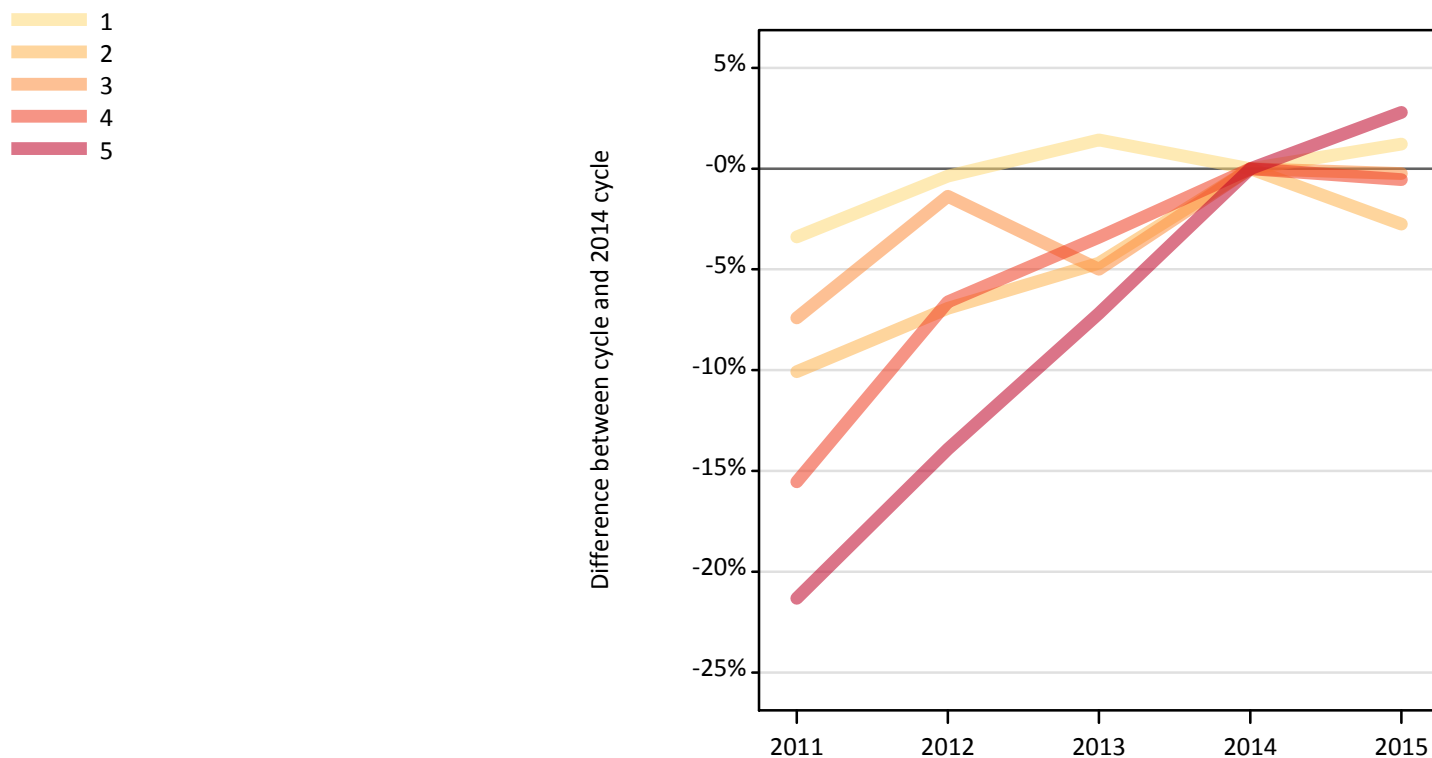
IX.4.21 Applicants by domicile and number of applications made : EU (excluding UK)

Difference between cycle and 2014 cycle

Domicile and number of applications made by applicant		2011	2012	2013	2014	2015
EU (excluding UK)	1	21%	-1%	0%	0%	-1%
	2	15%	0%	4%	0%	5%
	3	15%	-4%	2%	0%	10%
	4	15%	-1%	1%	0%	4%
	5	1%	-11%	-7%	0%	8%
	All	5%	-9%	-5%	0%	7%

IX.4.22 Applicants by domicile and number of applications made : Not EU

Difference between cycle and 2014 cycle



IX.4.23 Applicants by domicile and number of applications made : Not EU

Domicile and number of applications made by applicant		2011	2012	2013	2014	2015
Not EU	1	5,650	5,820	5,930	5,840	5,910
	2	2,090	2,160	2,220	2,320	2,260
	3	3,460	3,690	3,550	3,740	3,730
	4	4,440	4,900	5,070	5,250	5,220
	5	40,830	44,680	48,170	51,900	53,350
	All	56,470	61,250	64,940	69,060	70,470

IX.4.24 Applicants by domicile and number of applications made : Not EU

Difference between cycle and 2014 cycle

Domicile and number of applications made by applicant		2011	2012	2013	2014	2015
Not EU	1	-3%	-0%	1%	0%	1%
	2	-10%	-7%	-5%	0%	-3%
	3	-7%	-1%	-5%	0%	-0%
	4	-16%	-7%	-3%	0%	-1%
	5	-21%	-14%	-7%	0%	3%
	All	-18%	-11%	-6%	0%	2%

IX.4.25 Technical notes and definitions

These additional tables have been produced to help comparisons through time, particularly when considering Scottish domiciled applicants and Scottish providers.

In 2015, a set of courses relating to teacher training that historically would only have been available through UCAS Teacher Training, and therefore not previously counted in the scope of this statistical release, were brought into the undergraduate UCAS scheme. These courses are all offered by providers based in Scotland and are in the JACS3 detailed subject reporting grouping of 'X1'. The large majority of applications to these courses are from applicants living in Scotland.

These additional tables exclude any applications made by applicants to subject group 'X1' at Scottish providers and provide a better 'like for like' comparison particularly when considering Scottish domiciled applicants and Scottish providers. The primary deadline applicant statistics which include all applications to Scottish providers are available upon the UCAS website.

Applicants have been able to submit applications for all 2015 courses since early September. People who submit their applications to UCAS by the January deadline are considered 'on time' applicants for the large majority of courses offered through UCAS. Some art and design courses have a later deadline of 24 March. By definition all main scheme applications have been received by the 30 June deadline.

Counts of the number of applicants reported have been rounded to the nearest 10 applicants, this may result in instances where totals do not equal the sum of the components. Proportional changes have been rounded to the nearest whole percentage point.

Age

This statistical release uses country-specific age definitions which align with the cut off points for school/college cohorts within the different administrations of the UK. For England and Wales ages are defined on the 31 August, for Northern Ireland on the 1 July and for Scotland on the 28 February the following year. Defining ages in this way matches the assignment of children to school cohorts. For applicants outside of the UK the cohort cut off for England and Wales has been used.

Applicant

A person who has made an application in the UCAS system during the cycle reported (including applications for deferred entry). Records of prior acceptance (RPAs) are excluded.

Application

An application to a course at a provider made by an applicant in the UCAS main scheme. Applicants may make up to five main scheme applications.

Country of provider

An applicant may be counted once for each provider country they have applied to in the main scheme. If an applicant has applied to providers in multiple countries then the applicant is counted once within each country of provider applied to.

This statistical release excludes a small number of applications to a provider based in the EU.

Domicile

Declared area of permanent residence. The Channel Islands and the Isle of Man have been assigned as 'Not EU'.

First time applicant

An applicant that did not apply to the UCAS scheme in the previous cycle.

Main scheme

The main UCAS application scheme through which up to five providers/courses can be applied to. This opens in September and closes to new applications on 30 June the following year.

Reapplicant

An applicant that applied to the UCAS scheme in the previous cycle.

IX.4.26 Technical notes and definitions: continued

Subject group

The JACS3 classification used to classify courses into subject groups.

Tariff group of provider

Providers are grouped as higher, medium or lower tariff based on their average levels of attainment of their accepted applicants (summarised through UCAS Tariff points) in recent cycles. Each group of providers accounted for around a third of all UK 18 year old acceptances in recent cycles.