

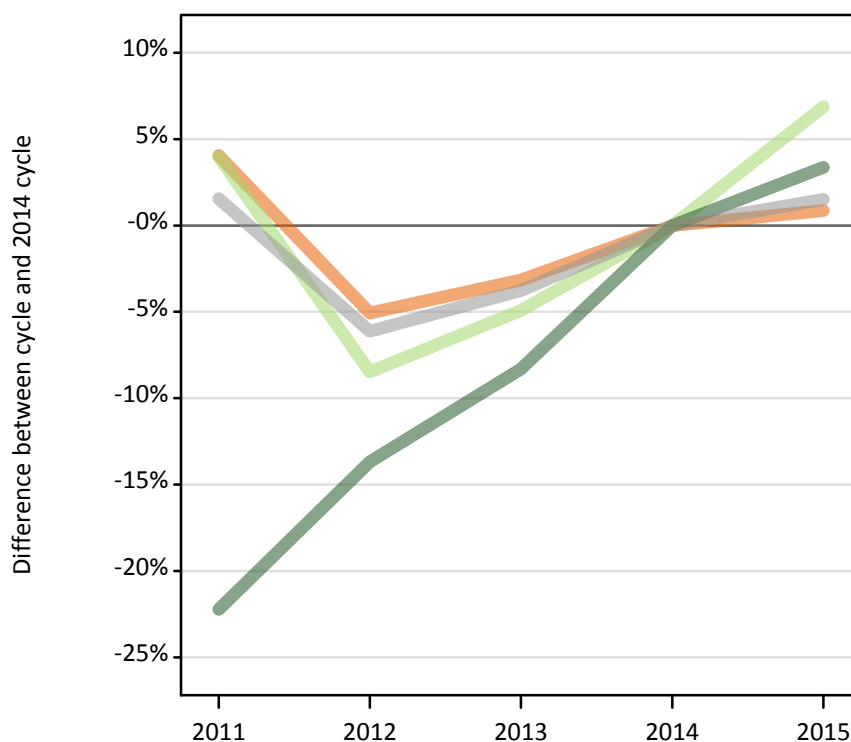
March Deadline Context: Domicile

Applicants by domicile at the 24 March deadline (No Scot. X1)

FX.1.1 Applicants by domicile group

Difference between cycle and 2014 cycle

— UK
— EU (excluding UK)
— Not EU
— All domiciles



FX.1.2 Applicants by domicile group

Domicile group of applicant	2011	2012	2013	2014	2015
UK	533,230	486,530	496,280	512,520	516,910
EU (excluding UK)	43,750	38,510	40,010	42,080	44,970
Not EU	45,100	50,060	53,170	58,000	59,950
All domiciles	622,090	575,090	589,470	612,590	621,830

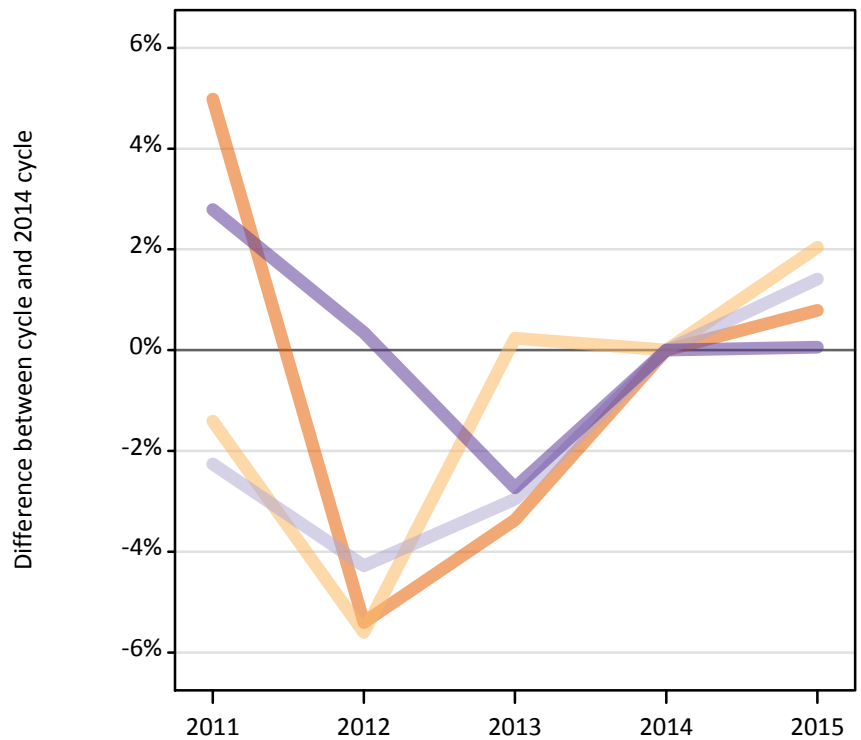
FX.1.3 Applicants by domicile group

Difference between cycle and 2014 cycle

Domicile group of applicant	2011	2012	2013	2014	2015
UK	4%	-5%	-3%	0%	1%
EU (excluding UK)	4%	-8%	-5%	0%	7%
Not EU	-22%	-14%	-8%	0%	3%
All domiciles	2%	-6%	-4%	0%	2%

FX.1.4 Applicants by UK country of domicile

Difference between cycle and 2014 cycle



FX.1.5 Applicants by UK country of domicile

Domicile group of applicant	2011	2012	2013	2014	2015
England	449,580	405,110	413,820	428,250	431,620
Northern Ireland	19,630	18,790	19,960	19,910	20,320
Scotland	41,360	40,500	41,060	42,310	42,910
Wales	22,670	22,130	21,450	22,050	22,060
UK	533,230	486,530	496,280	512,520	516,910

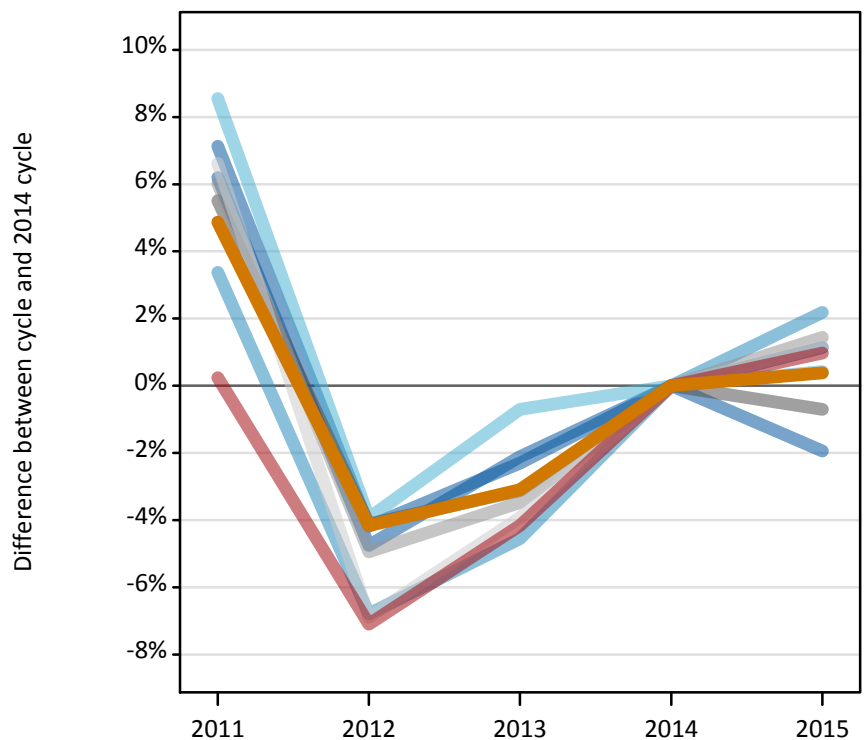
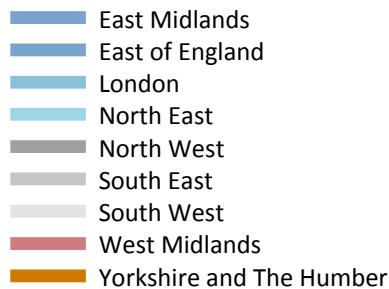
FX.1.6 Applicants by UK country of domicile

Difference between cycle and 2014 cycle

Domicile group of applicant	2011	2012	2013	2014	2015
England	5%	-5%	-3%	0%	1%
Northern Ireland	-1%	-6%	0%	0%	2%
Scotland	-2%	-4%	-3%	0%	1%
Wales	3%	0%	-3%	0%	0%
UK	4%	-5%	-3%	0%	1%

FX.1.7 Applicants by English region of domicile

Difference between cycle and 2014 cycle



FX.1.8 Applicants by English region of domicile

English region	2011	2012	2013	2014	2015
North East	20,240	17,910	18,520	18,650	18,730
Yorkshire and The Humber	41,290	37,730	38,150	39,370	39,520
North West	61,430	55,830	56,410	58,230	57,820
East Midlands	35,270	31,540	32,160	32,920	32,280
West Midlands	45,860	42,500	43,850	45,750	46,200
East of England	46,060	41,320	42,460	43,380	43,870
London	85,980	77,520	79,380	83,170	84,990
South East	72,000	64,560	65,550	67,910	68,890
South West	41,450	36,200	37,350	38,880	39,330

FX.1.9 Applicants by English region of domicile

Difference between cycle and 2014 cycle

English region	2011	2012	2013	2014	2015
North East	9%	-4%	-1%	0%	0%
Yorkshire and The Humber	5%	-4%	-3%	0%	0%
North West	6%	-4%	-3%	0%	-1%
East Midlands	7%	-4%	-2%	0%	-2%
West Midlands	0%	-7%	-4%	0%	1%
East of England	6%	-5%	-2%	0%	1%
London	3%	-7%	-5%	0%	2%
South East	6%	-5%	-3%	0%	1%
South West	7%	-7%	-4%	0%	1%

FX.1.10 Applicants by declared country of domicile

Selected countries

Declared country of domicile	2011	2012	2013	2014	2015
Angola	50	60	60	70	160
Australia	350	420	480	510	540
Austria	520	530	540	560	590
Azerbaijan	150	190	180	240	220
Bahrain	240	290	310	310	290
Bangladesh	280	300	230	250	250
Belgium	930	820	890	940	1,020
Bermuda	230	190	180	190	180
Botswana	40	140	60	100	160
Brazil	130	170	180	210	250
Brunei	680	640	620	780	450
Bulgaria	2,300	2,220	2,480	2,210	2,200
Canada	1,780	1,960	1,960	1,940	2,030
Cayman Islands	100	100	90	120	90
China	6,810	7,540	8,160	8,450	9,400
Croatia	40	40	60	130	210
Cyprus (European Union)	3,740	3,040	3,020	3,020	2,980
Czech Republic	430	420	440	540	760
Denmark	430	390	430	410	450
Egypt	210	290	420	530	610
Estonia	600	520	570	470	460
Finland	830	690	750	840	930
France	3,780	3,440	3,560	4,050	4,570
Germany	3,720	3,120	2,900	2,890	3,060
Ghana	180	190	190	230	210
Gibraltar	300	270	300	280	280
Greece	2,270	2,070	2,120	2,130	2,100
Guernsey	310	290	290	290	310
Hong Kong	3,920	5,360	5,370	5,840	5,630
Hungary	380	540	740	750	810
India	2,320	2,620	2,980	3,310	3,460
Indonesia	250	300	400	440	510
Iran	330	340	210	200	180
Ireland	7,080	5,720	5,680	5,480	5,210
Isle of Man	540	510	480	490	450
Israel	90	100	130	90	120
Italy	2,220	2,390	2,890	3,690	4,330
Japan	370	410	440	490	440
Jersey	590	560	520	490	510
Jordan	330	310	360	360	370
Kazakhstan	370	310	320	310	300
Kenya	530	560	540	560	590
Korea (South)	1,180	1,170	1,220	1,190	1,330
Kuwait	260	300	300	350	400

Declared country of domicile	2011	2012	2013	2014	2015
Latvia	950	680	520	490	470
Lebanon	120	150	180	210	230
Lithuania	3,120	2,270	1,960	1,770	1,630
Luxembourg	370	360	410	450	420
Macao	100	140	130	170	240
Malaysia	2,770	3,060	3,690	5,010	5,160
Malta	130	90	100	90	90
Mauritius	400	420	340	450	360
Mexico	110	120	130	130	160
Morocco	170	190	230	300	320
Nepal	110	120	90	80	60
Netherlands	770	680	720	760	820
New Zealand	130	130	140	160	170
Nigeria	1,490	1,490	1,560	1,520	1,540
Norway	1,270	1,390	1,510	1,540	1,510
Oman	140	130	160	200	250
Pakistan	1,600	1,550	1,510	1,520	1,570
Philippines	90	90	110	110	140
Poland	1,870	1,720	1,970	2,310	2,580
Portugal	650	590	750	780	980
Qatar	240	260	340	280	350
Romania	2,590	2,430	2,290	2,520	3,150
Russia	640	740	880	1,090	1,210
Saudi Arabia	650	690	700	710	770
Serbia	70	90	130	110	90
Singapore	2,990	3,480	3,690	3,990	3,810
Slovakia	440	450	450	560	550
Slovenia	110	100	120	150	160
South Africa	200	230	250	290	350
Spain	1,550	1,470	1,890	2,260	2,660
Sri Lanka	350	300	270	270	210
Sweden	1,570	1,450	1,450	1,460	1,390
Switzerland	860	910	1,060	1,080	1,200
Taiwan	260	280	260	300	330
Tanzania	140	130	140	160	140
Thailand	540	610	620	750	720
Trinidad and Tobago	150	140	160	150	190
Turkey	380	430	490	540	550
Uganda	90	130	140	100	110
Ukraine	180	210	280	290	250
United Arab Emirates	720	800	930	1,130	1,270
United States of America	2,550	2,780	3,100	3,400	3,480
Vietnam	570	600	550	490	420
Zambia	100	120	130	110	120
Zimbabwe	260	310	300	340	350

FX.1.11 Applicants by declared country of domicile
Selected countries, difference between cycle and 2014 cycle

Declared country of domicile	2011	2012	2013	2014	2015
Angola	-28%	-19%	-13%	0%	126%
Australia	-32%	-18%	-6%	0%	6%
Austria	-7%	-5%	-4%	0%	5%
Azerbaijan	-37%	-22%	-22%	0%	-5%
Bahrain	-22%	-6%	1%	0%	-7%
Bangladesh	12%	22%	-7%	0%	2%
Belgium	-1%	-13%	-6%	0%	8%
Bermuda	20%	-1%	-5%	0%	-5%
Botswana	-62%	41%	-36%	0%	57%
Brazil	-40%	-23%	-15%	0%	16%
Brunei	-13%	-18%	-20%	0%	-42%
Bulgaria	4%	0%	12%	0%	-1%
Canada	-8%	1%	1%	0%	5%
Cayman Islands	-17%	-15%	-21%	0%	-22%
China	-19%	-11%	-4%	0%	11%
Croatia	-71%	-72%	-51%	0%	68%
Cyprus (European Union)	24%	1%	0%	0%	-1%
Czech Republic	-20%	-24%	-20%	0%	40%
Denmark	4%	-5%	4%	0%	9%
Egypt	-60%	-45%	-20%	0%	16%
Estonia	28%	11%	23%	0%	-0%
Finland	-0%	-18%	-10%	0%	11%
France	-7%	-15%	-12%	0%	13%
Germany	29%	8%	1%	0%	6%
Ghana	-20%	-14%	-17%	0%	-5%
Gibraltar	5%	-5%	4%	0%	-2%
Greece	7%	-3%	-0%	0%	-1%
Guernsey	4%	-0%	-2%	0%	5%
Hong Kong	-33%	-8%	-8%	0%	-3%
Hungary	-49%	-29%	-1%	0%	7%
India	-30%	-21%	-10%	0%	4%
Indonesia	-44%	-32%	-10%	0%	17%
Iran	66%	68%	4%	0%	-10%
Ireland	29%	5%	4%	0%	-5%
Isle of Man	11%	4%	-2%	0%	-8%
Israel	-4%	4%	35%	0%	23%
Italy	-40%	-35%	-22%	0%	18%
Japan	-24%	-15%	-9%	0%	-10%
Jersey	22%	14%	7%	0%	4%
Jordan	-9%	-13%	1%	0%	3%
Kazakhstan	20%	-1%	3%	0%	-2%
Kenya	-6%	0%	-4%	0%	4%
Korea (South)	-1%	-2%	2%	0%	11%
Kuwait	-26%	-12%	-14%	0%	15%

Declared country of domicile	2011	2012	2013	2014	2015
Latvia	92%	38%	5%	0%	-4%
Lebanon	-42%	-29%	-17%	0%	7%
Lithuania	76%	28%	11%	0%	-8%
Luxembourg	-18%	-20%	-9%	0%	-5%
Macao	-41%	-16%	-22%	0%	46%
Malaysia	-45%	-39%	-26%	0%	3%
Malta	46%	-1%	17%	0%	6%
Mauritius	-12%	-8%	-24%	0%	-20%
Mexico	-16%	-13%	1%	0%	17%
Morocco	-43%	-36%	-22%	0%	9%
Nepal	35%	43%	8%	0%	-29%
Netherlands	1%	-10%	-5%	0%	8%
New Zealand	-19%	-20%	-13%	0%	4%
Nigeria	-1%	-2%	3%	0%	2%
Norway	-18%	-10%	-2%	0%	-2%
Oman	-31%	-34%	-20%	0%	22%
Pakistan	5%	2%	-1%	0%	3%
Philippines	-20%	-19%	-4%	0%	27%
Poland	-19%	-26%	-15%	0%	12%
Portugal	-16%	-24%	-4%	0%	26%
Qatar	-15%	-7%	22%	0%	27%
Romania	3%	-4%	-9%	0%	25%
Russia	-41%	-32%	-19%	0%	11%
Saudi Arabia	-8%	-4%	-1%	0%	8%
Serbia	-36%	-16%	19%	0%	-12%
Singapore	-25%	-13%	-8%	0%	-5%
Slovakia	-21%	-20%	-20%	0%	-1%
Slovenia	-30%	-33%	-19%	0%	3%
South Africa	-30%	-19%	-13%	0%	21%
Spain	-32%	-35%	-17%	0%	17%
Sri Lanka	31%	10%	2%	0%	-23%
Sweden	7%	-1%	-1%	0%	-5%
Switzerland	-20%	-15%	-2%	0%	11%
Taiwan	-12%	-8%	-14%	0%	11%
Tanzania	-16%	-22%	-13%	0%	-11%
Thailand	-28%	-19%	-18%	0%	-5%
Trinidad and Tobago	0%	-8%	4%	0%	25%
Turkey	-29%	-19%	-9%	0%	3%
Uganda	-10%	21%	32%	0%	5%
Ukraine	-37%	-27%	-4%	0%	-12%
United Arab Emirates	-36%	-29%	-18%	0%	12%
United States of America	-25%	-18%	-9%	0%	2%
Vietnam	16%	22%	13%	0%	-15%
Zambia	-9%	9%	19%	0%	9%
Zimbabwe	-22%	-9%	-12%	0%	6%

FX.1.12 Technical notes and definitions

These additional tables have been produced to help comparisons through time, particularly when considering Scottish domiciled applicants and Scottish providers.

In 2015, a set of courses relating to teacher training that historically would only have been available through UCAS Teacher Training, and therefore not previously counted in the scope of this statistical release, were brought into the undergraduate UCAS scheme. These courses are all offered by providers based in Scotland and are in the JACS3 detailed subject reporting grouping of 'X1'. The large majority of applications to these courses are from applicants living in Scotland.

These additional tables exclude any applications made by applicants to subject group 'X1' at Scottish providers and provide a better 'like for like' comparison particularly when considering Scottish domiciled applicants and Scottish providers. The primary deadline applicant statistics which include all applications to Scottish providers are available upon the UCAS website.

Applicants have been able to submit applications for all 2015 courses since early September.

People who submit their applications to UCAS by the January deadline are considered 'on time' applicants for the large majority of courses offered through UCAS. Some art and design courses have a later deadline of 24 March. Almost all main scheme applications have been received by the 24 March deadline.

Counts of the number of applicants reported have been rounded to the nearest 10 applicants, this may result in instances where totals do not equal the sum of the components. Proportional changes have been rounded to the nearest whole percentage point.

Age

This statistical release uses country-specific age definitions which align with the cut off points for school/college cohorts within the different administrations of the UK. For England and Wales ages are defined on the 31 August, for Northern Ireland on the 1 July and for Scotland on the 28 February the following year. Defining ages in this way matches the assignment of children to school cohorts. For applicants outside of the UK the cohort cut off for England and Wales has been used.

Applicant

A person who has made an application in the UCAS system during the cycle reported, this includes those who submit applications for deferred entry. RPAs are excluded.

Application

An application to a course at an provider made by an applicant in the UCAS main scheme. Applicants may make up to five main scheme applications.

Country of provider

An applicant may be counted once for each provider country they have applied to in the main scheme. If an applicant has applied to providers in multiple countries then the applicant is counted once within each country of provider applied to.

This statistical release excludes a small number of applications to a provider based in the EU.

Domicile

Declared area of permanent residence. The Channel Islands and the Isle of Man have been assigned as 'Not EU'.

First time applicant

An applicant that did not apply to the UCAS scheme in the previous cycle.

Main scheme

The main UCAS application scheme through which up to five providers/courses can be applied to. This opens in September and closes to new applications on 30 June the following year.

Reapplicant

An applicant that applied to the UCAS scheme in the previous cycle.

FX.1.13 Technical notes and definitions: continued

Subject group

The JACS3 classification used to classify courses into subject groups.

Tariff group of provider

Providers are grouped as higher, medium or lower tariff based on their average levels of attainment of their accepted applicants (summarised through UCAS Tariff points) in recent cycles. Each group of providers accounted for around a third of all UK 18 year old acceptances in recent cycles.