

March Deadline Analysis: Sex and age

Applicants by sex and age at the 24 March deadline

F.2.1 Applicants by sex : All domiciles

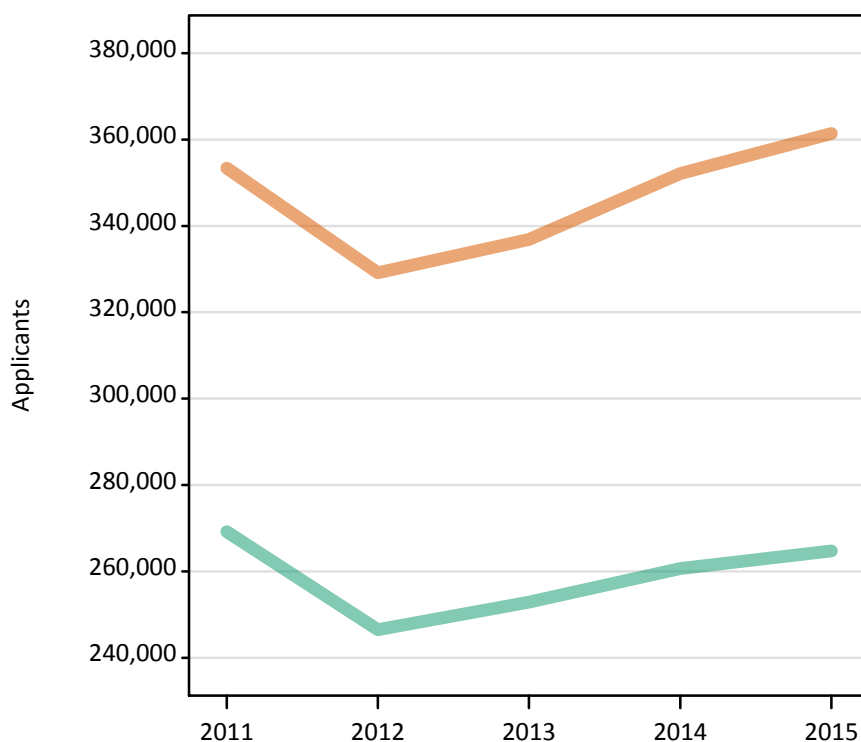
Difference between cycle and 2014 cycle

Men
Women



F.2.2 Applicants by sex : All domiciles

Men
Women



F.2.3 Applicants by age and sex : All domiciles

Age group and sex of applicant		2011	2012	2013	2014	2015
Under 18	Women	4,790	4,870	5,120	5,850	6,000
	Men	3,420	3,640	3,960	4,290	4,600
18	Women	163,120	159,800	162,050	167,340	176,690
	Men	129,880	125,100	127,160	131,380	135,260
19	Women	69,740	60,200	65,510	68,360	69,310
	Men	58,960	50,220	54,870	55,980	57,010
20-24	Women	66,580	60,130	61,100	64,810	63,560
	Men	53,330	46,930	47,120	48,450	47,310
25-29	Women	19,850	17,850	17,980	18,940	19,370
	Men	10,930	9,390	9,410	9,600	9,570
30-34	Women	11,370	10,440	10,230	10,580	10,430
	Men	5,410	4,650	4,350	4,440	4,300
35 and over	Women	17,950	15,860	14,880	16,220	16,050
	Men	7,240	6,550	6,000	6,520	6,700
All ages	Women	353,410	329,140	336,870	352,100	361,400
	Men	269,170	246,480	252,870	260,650	264,760

F.2.4 Applicants by age and sex : All domiciles

Difference between cycle and 2014 cycle

Age group and sex of applicant		2011	2012	2013	2014	2015
Under 18	Women	-18%	-17%	-13%	0%	2%
	Men	-20%	-15%	-8%	0%	7%
18	Women	-3%	-5%	-3%	0%	6%
	Men	-1%	-5%	-3%	0%	3%
19	Women	2%	-12%	-4%	0%	1%
	Men	5%	-10%	-2%	0%	2%
20-24	Women	3%	-7%	-6%	0%	-2%
	Men	10%	-3%	-3%	0%	-2%
25-29	Women	5%	-6%	-5%	0%	2%
	Men	14%	-2%	-2%	0%	-0%
30-34	Women	7%	-1%	-3%	0%	-1%
	Men	22%	5%	-2%	0%	-3%
35 and over	Women	11%	-2%	-8%	0%	-1%
	Men	11%	0%	-8%	0%	3%
All ages	Women	0%	-7%	-4%	0%	3%
	Men	3%	-5%	-3%	0%	2%

F.2.5 Applicants by sex : UK

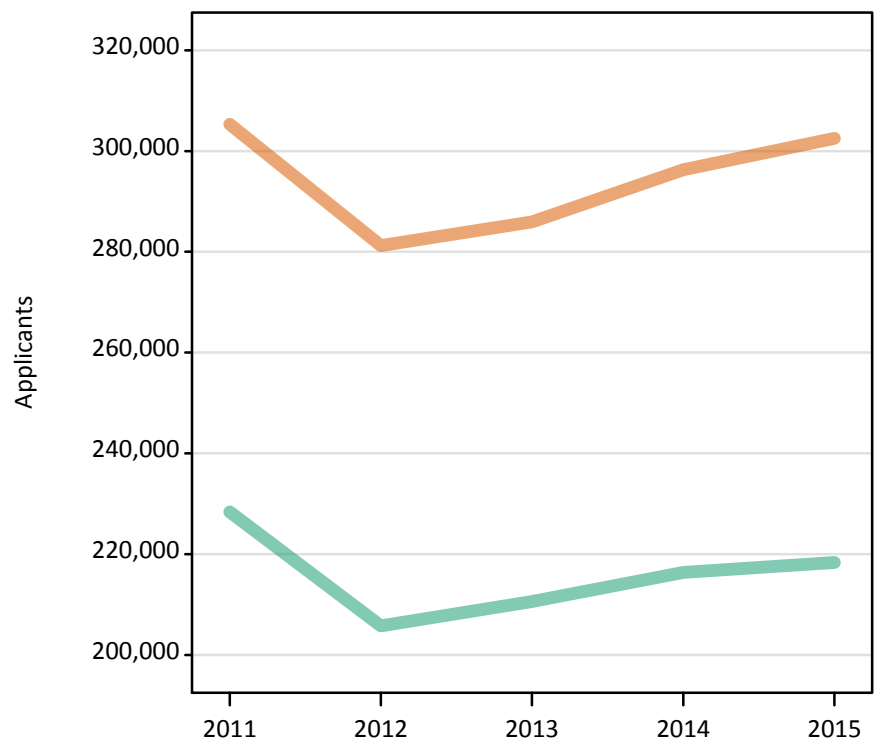
Difference between cycle and 2014 cycle

Men
Women



F.2.6 Applicants by sex : UK

Men
Women



F.2.7 Applicants by age and sex : UK

Age group and sex of applicant		2011	2012	2013	2014	2015
Under 18	Women	1,270	1,020	900	940	980
	Men	850	730	680	650	720
18	Women	147,270	143,230	143,700	147,350	154,800
	Men	117,860	112,060	113,170	116,220	118,600
19	Women	56,050	46,580	51,220	52,640	52,980
	Men	47,550	39,190	43,480	44,170	44,630
20-24	Women	53,970	48,390	49,040	51,710	50,290
	Men	41,150	35,490	35,670	36,800	35,880
25-29	Women	18,210	16,480	16,610	17,540	17,770
	Men	9,200	7,910	8,010	8,290	8,200
30-34	Women	10,900	10,010	9,850	10,200	10,030
	Men	4,870	4,190	3,910	4,020	3,890
35 and over	Women	17,640	15,540	14,610	15,900	15,700
	Men	6,910	6,200	5,680	6,220	6,420
All ages	Women	305,290	281,260	285,940	296,280	302,540
	Men	228,390	205,760	210,610	216,380	218,330

F.2.8 Applicants by age and sex : UK

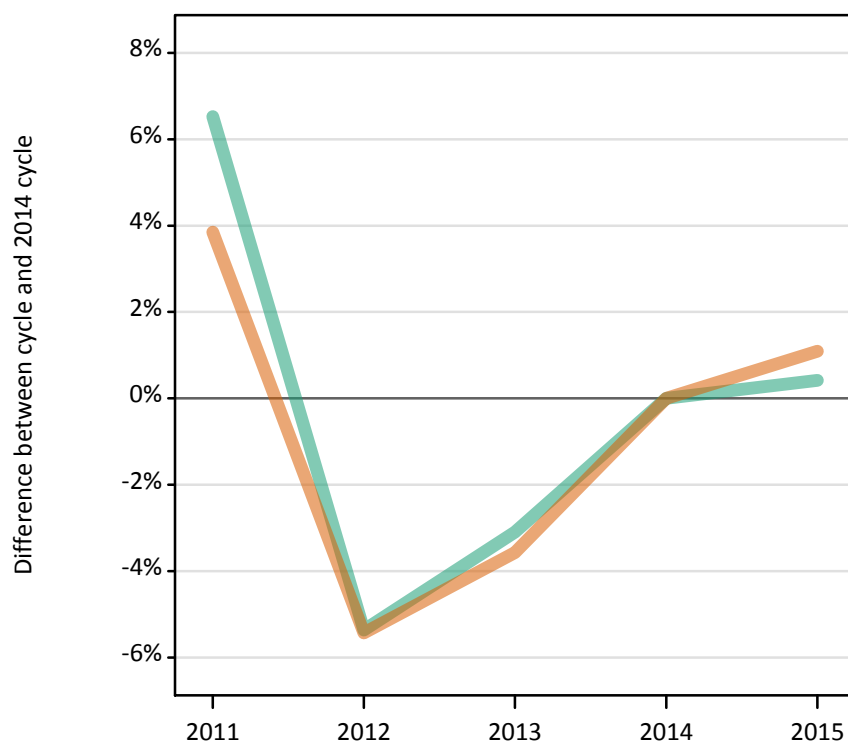
Difference between cycle and 2014 cycle

Age group and sex of applicant		2011	2012	2013	2014	2015
Under 18	Women	35%	8%	-5%	0%	4%
	Men	30%	11%	4%	0%	10%
18	Women	-0%	-3%	-2%	0%	5%
	Men	1%	-4%	-3%	0%	2%
19	Women	6%	-12%	-3%	0%	1%
	Men	8%	-11%	-2%	0%	1%
20-24	Women	4%	-6%	-5%	0%	-3%
	Men	12%	-4%	-3%	0%	-3%
25-29	Women	4%	-6%	-5%	0%	1%
	Men	11%	-5%	-3%	0%	-1%
30-34	Women	7%	-2%	-3%	0%	-2%
	Men	21%	4%	-3%	0%	-3%
35 and over	Women	11%	-2%	-8%	0%	-1%
	Men	11%	-0%	-9%	0%	3%
All ages	Women	3%	-5%	-3%	0%	2%
	Men	6%	-5%	-3%	0%	1%

F.2.9 Applicants by sex : England

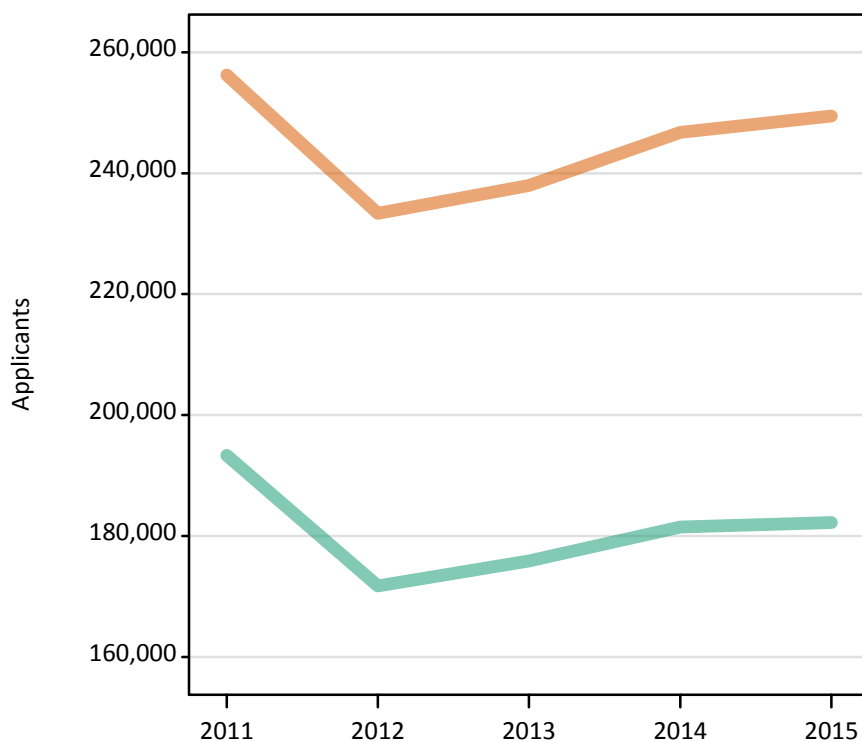
Difference between cycle and 2014 cycle

Men
Women



F.2.10 Applicants by sex : England

Men
Women



F.2.11 Applicants by age and sex : England

Age group and sex of applicant		2011	2012	2013	2014	2015
Under 18	Women	670	490	460	500	490
	Men	460	390	380	380	450
18	Women	122,990	118,960	119,910	123,130	129,640
	Men	99,390	94,270	95,270	98,240	100,520
19	Women	48,880	39,650	44,240	45,570	45,860
	Men	42,090	33,920	38,170	38,760	39,100
20-24	Women	44,250	38,990	39,200	41,440	39,110
	Men	34,140	28,370	27,990	29,260	28,020
25-29	Women	15,060	13,480	13,470	14,130	13,580
	Men	7,270	6,190	6,210	6,430	6,010
30-34	Women	9,220	8,470	8,230	8,440	7,910
	Men	4,040	3,350	3,100	3,190	2,950
35 and over	Women	15,200	13,320	12,440	13,560	12,870
	Men	5,930	5,270	4,750	5,230	5,210
All ages	Women	256,260	233,360	237,960	246,760	249,460
	Men	193,320	171,750	175,860	181,490	182,240

F.2.12 Applicants by age and sex : England

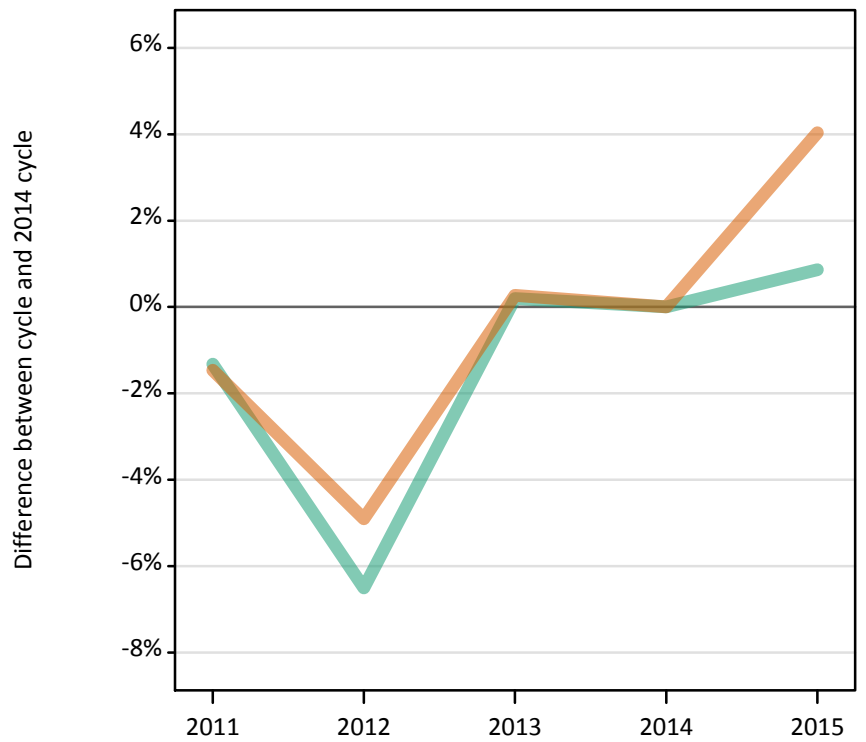
Difference between cycle and 2014 cycle

Age group and sex of applicant		2011	2012	2013	2014	2015
Under 18	Women	32%	-2%	-9%	0%	-3%
	Men	20%	3%	-1%	0%	18%
18	Women	-0%	-3%	-3%	0%	5%
	Men	1%	-4%	-3%	0%	2%
19	Women	7%	-13%	-3%	0%	1%
	Men	9%	-12%	-2%	0%	1%
20-24	Women	7%	-6%	-5%	0%	-6%
	Men	17%	-3%	-4%	0%	-4%
25-29	Women	7%	-5%	-5%	0%	-4%
	Men	13%	-4%	-3%	0%	-7%
30-34	Women	9%	0%	-2%	0%	-6%
	Men	27%	5%	-3%	0%	-8%
35 and over	Women	12%	-2%	-8%	0%	-5%
	Men	13%	1%	-9%	0%	-0%
All ages	Women	4%	-5%	-4%	0%	1%
	Men	7%	-5%	-3%	0%	0%

F.2.13 Applicants by sex : Northern Ireland

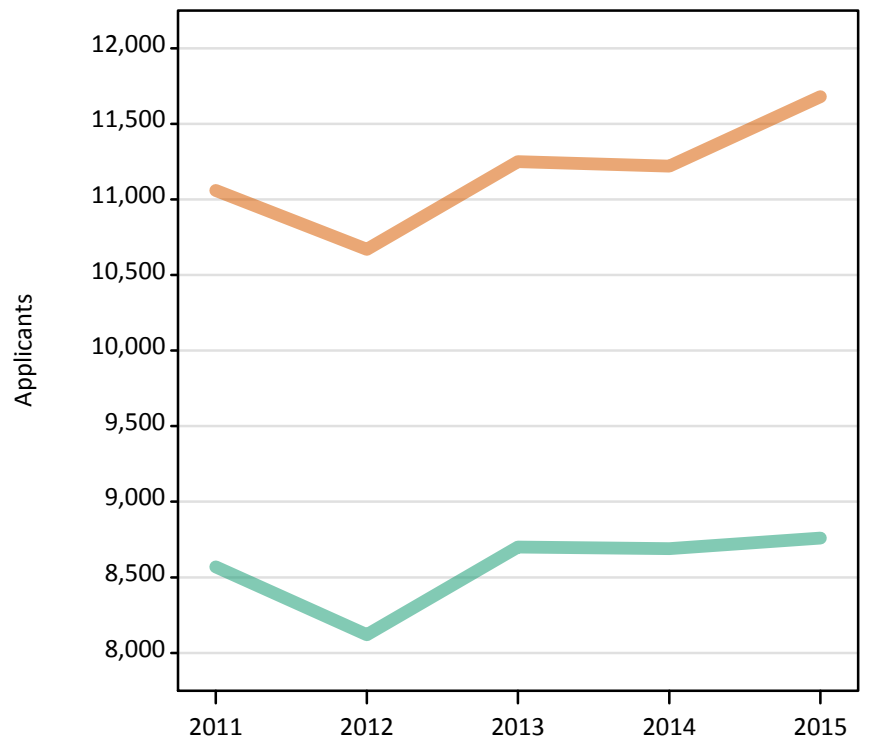
Difference between cycle and 2014 cycle

Men
Women



F.2.14 Applicants by sex : Northern Ireland

Men
Women



F.2.15 Applicants by age and sex : Northern Ireland

Age group and sex of applicant		2011	2012	2013	2014	2015
Under 18	Women	30	30	20	20	20
	Men	20	20	20	10	10
18	Women	6,740	6,700	6,530	6,400	6,830
	Men	5,200	4,990	5,160	5,080	5,130
19	Women	1,670	1,480	1,650	1,650	1,660
	Men	1,360	1,190	1,300	1,380	1,420
20-24	Women	1,740	1,660	1,950	2,030	2,030
	Men	1,480	1,460	1,710	1,720	1,660
25-29	Women	460	410	550	570	560
	Men	320	250	290	270	290
30-34	Women	180	170	260	260	270
	Men	100	100	110	110	130
35 and over	Women	260	210	300	300	300
	Men	100	110	120	120	120
All ages	Women	11,060	10,670	11,250	11,220	11,680
	Men	8,570	8,120	8,700	8,690	8,760

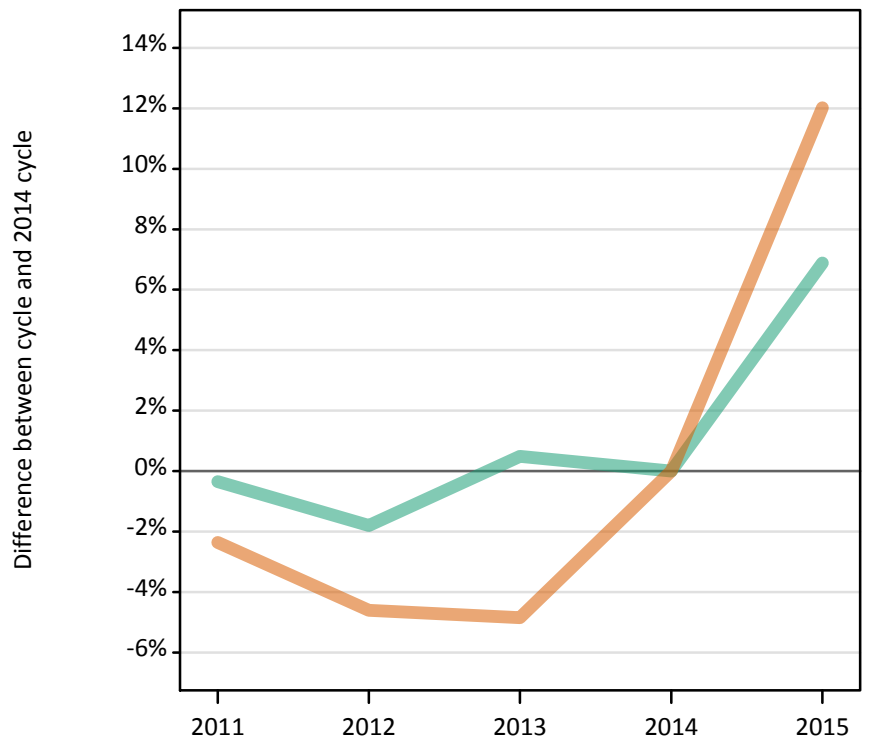
F.2.16 Applicants by age and sex : Northern Ireland

Difference between cycle and 2014 cycle

Age group and sex of applicant		2011	2012	2013	2014	2015
Under 18	Women	47%	100%	6%	0%	29%
	Men	100%	55%	55%	0%	9%
18	Women	5%	5%	2%	0%	7%
	Men	2%	-2%	1%	0%	1%
19	Women	1%	-10%	0%	0%	1%
	Men	-2%	-14%	-6%	0%	3%
20-24	Women	-14%	-18%	-4%	0%	0%
	Men	-14%	-15%	-0%	0%	-3%
25-29	Women	-19%	-28%	-4%	0%	-2%
	Men	17%	-6%	9%	0%	7%
30-34	Women	-32%	-33%	-0%	0%	5%
	Men	-10%	-3%	-2%	0%	22%
35 and over	Women	-15%	-31%	0%	0%	-0%
	Men	-10%	-5%	0%	0%	3%
All ages	Women	-1%	-5%	0%	0%	4%
	Men	-1%	-7%	0%	0%	1%

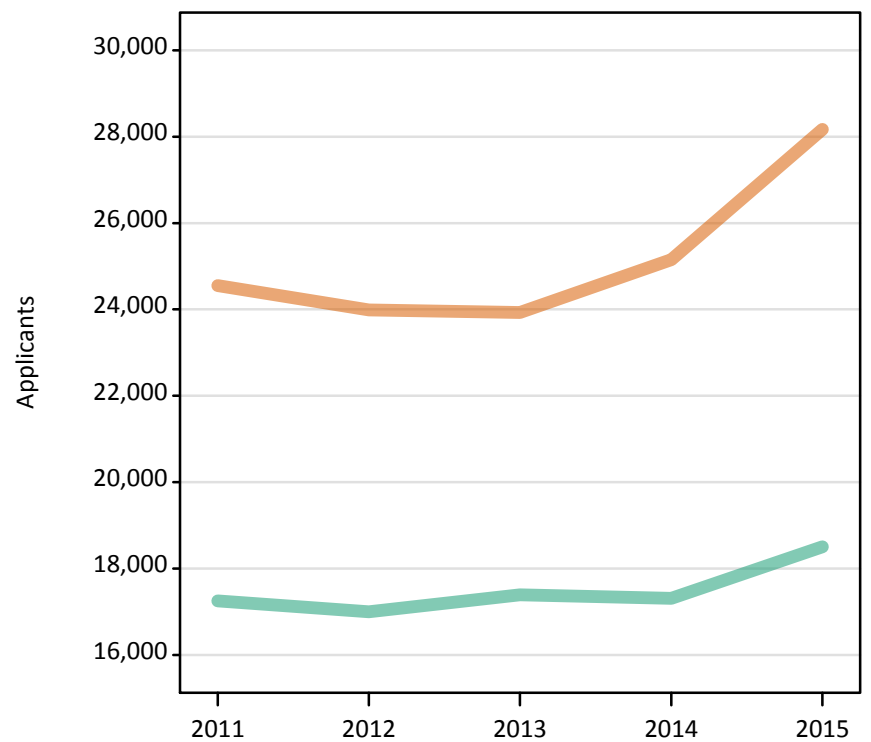
F.2.17 Applicants by sex : Scotland
Difference between cycle and 2014 cycle

Men
Women



F.2.18 Applicants by sex : Scotland

Men
Women



F.2.19 Applicants by age and sex : Scotland

Age group and sex of applicant		2011	2012	2013	2014	2015
Under 18	Women	550	480	400	410	450
	Men	360	310	270	250	260
18	Women	10,970	11,000	10,900	11,290	11,430
	Men	8,310	8,040	8,090	8,010	8,070
19	Women	3,200	3,230	3,120	3,130	3,260
	Men	2,280	2,330	2,290	2,260	2,340
20-24	Women	5,560	5,360	5,660	5,960	6,950
	Men	3,930	4,060	4,450	4,330	4,720
25-29	Women	1,790	1,730	1,700	1,920	2,780
	Men	1,200	1,100	1,140	1,220	1,550
30-34	Women	1,010	870	900	1,000	1,380
	Men	550	540	550	570	670
35 and over	Women	1,480	1,310	1,260	1,430	1,920
	Men	620	620	610	660	890
All ages	Women	24,550	23,990	23,930	25,150	28,170
	Men	17,250	17,000	17,390	17,310	18,500

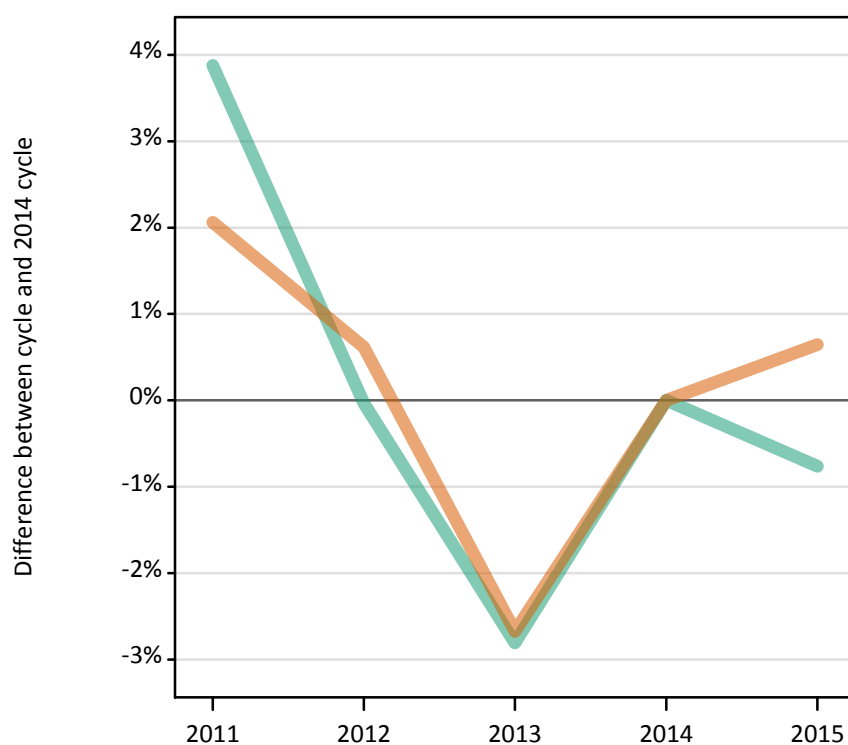
F.2.20 Applicants by age and sex : Scotland

Difference between cycle and 2014 cycle

Age group and sex of applicant		2011	2012	2013	2014	2015
Under 18	Women	35%	19%	-2%	0%	11%
	Men	41%	22%	9%	0%	3%
18	Women	-3%	-3%	-3%	0%	1%
	Men	4%	0%	1%	0%	1%
19	Women	2%	3%	-0%	0%	4%
	Men	1%	3%	1%	0%	3%
20-24	Women	-7%	-10%	-5%	0%	17%
	Men	-9%	-6%	3%	0%	9%
25-29	Women	-7%	-10%	-12%	0%	44%
	Men	-2%	-10%	-7%	0%	26%
30-34	Women	0%	-13%	-11%	0%	37%
	Men	-4%	-5%	-3%	0%	18%
35 and over	Women	4%	-8%	-12%	0%	35%
	Men	-6%	-6%	-8%	0%	35%
All ages	Women	-2%	-5%	-5%	0%	12%
	Men	-0%	-2%	0%	0%	7%

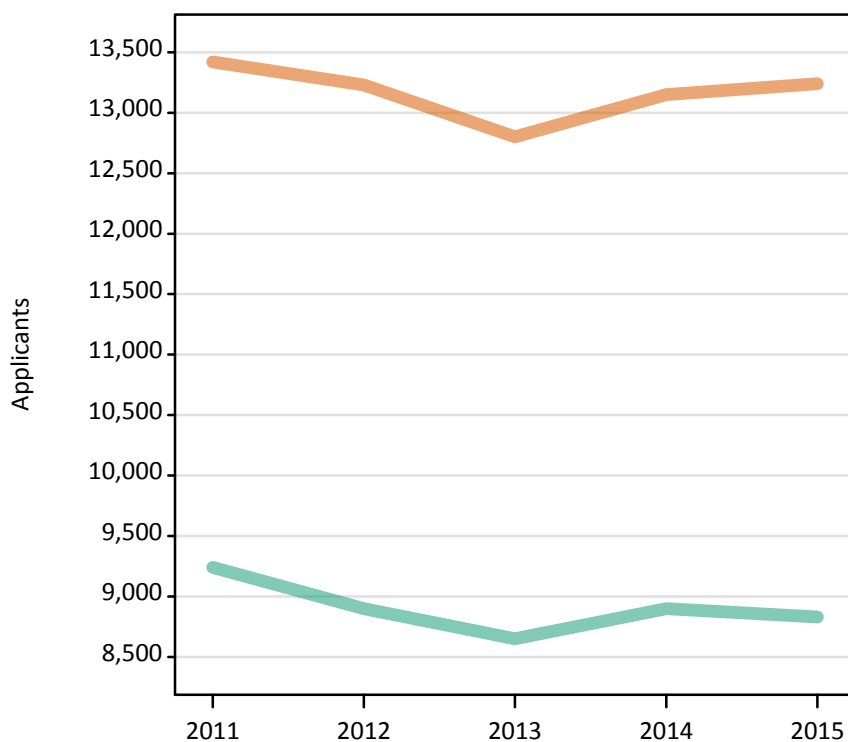
F.2.21 Applicants by sex : Wales
Difference between cycle and 2014 cycle

Men
Women



F.2.22 Applicants by sex : Wales

Men
Women



F.2.23 Applicants by age and sex : Wales

Age group and sex of applicant		2011	2012	2013	2014	2015
Under 18	Women	30	10	30	20	20
	Men	20	20	10	10	0
18	Women	6,570	6,570	6,370	6,520	6,900
	Men	4,960	4,770	4,650	4,880	4,880
19	Women	2,310	2,210	2,210	2,300	2,200
	Men	1,810	1,760	1,720	1,770	1,770
20-24	Women	2,420	2,380	2,240	2,290	2,210
	Men	1,600	1,600	1,520	1,490	1,480
25-29	Women	910	860	890	920	850
	Men	410	360	370	370	360
30-34	Women	500	490	460	500	460
	Men	190	190	150	150	130
35 and over	Women	700	700	610	610	600
	Men	260	200	210	220	200
All ages	Women	13,420	13,230	12,800	13,150	13,240
	Men	9,240	8,900	8,650	8,900	8,830

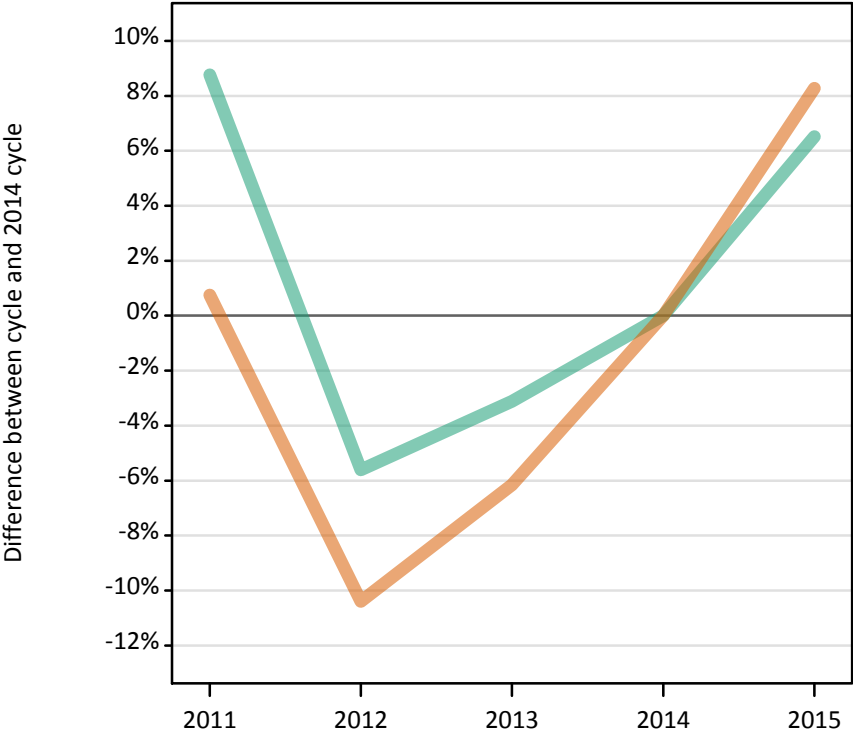
F.2.24 Applicants by age and sex : Wales

Difference between cycle and 2014 cycle

Age group and sex of applicant		2011	2012	2013	2014	2015
Under 18	Women	93%	-27%	67%	0%	20%
	Men	31%	15%	0%	0%	-85%
18	Women	1%	1%	-2%	0%	6%
	Men	2%	-2%	-5%	0%	0%
19	Women	0%	-4%	-4%	0%	-4%
	Men	2%	-1%	-3%	0%	0%
20-24	Women	6%	4%	-2%	0%	-4%
	Men	8%	7%	2%	0%	-1%
25-29	Women	-1%	-6%	-3%	0%	-7%
	Men	11%	-2%	0%	0%	-3%
30-34	Women	-0%	-1%	-7%	0%	-7%
	Men	22%	23%	1%	0%	-14%
35 and over	Women	14%	15%	0%	0%	-2%
	Men	18%	-7%	-2%	0%	-8%
All ages	Women	2%	1%	-3%	0%	1%
	Men	4%	-0%	-3%	0%	-1%

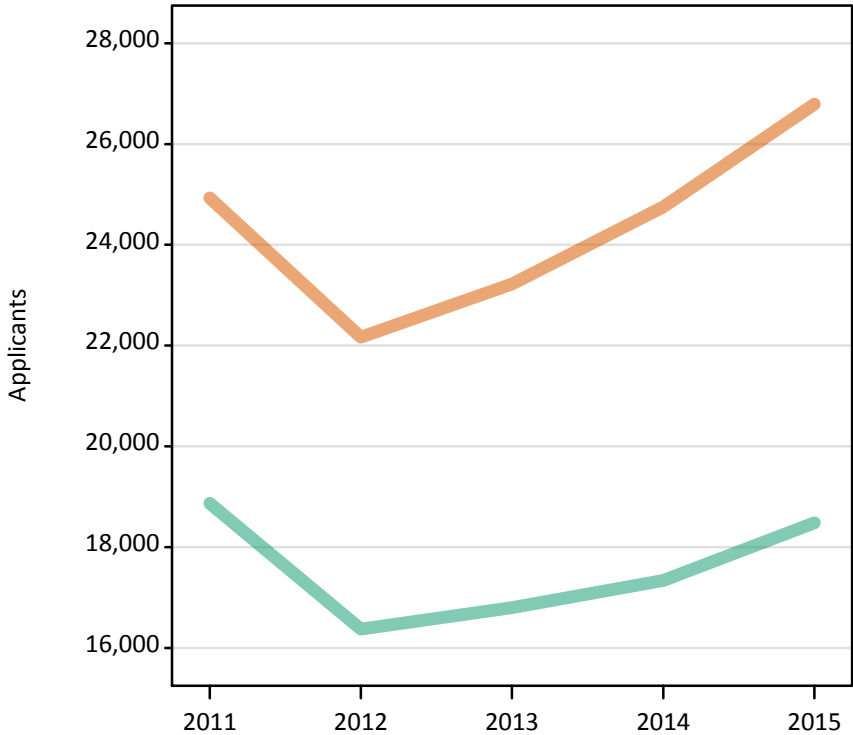
F.2.25 Applicants by sex : EU (excluding UK)
Difference between cycle and 2014 cycle

Men
Women



F.2.26 Applicants by sex : EU (excluding UK)

Men
Women



F.2.27 Applicants by age and sex : EU (excluding UK)

Age group and sex of applicant		2011	2012	2013	2014	2015
Under 18	Women	1,840	1,810	1,850	2,110	2,320
	Men	1,110	1,020	1,160	1,230	1,480
18	Women	8,050	7,650	8,040	8,620	9,650
	Men	5,170	5,180	5,320	5,760	6,390
19	Women	7,350	6,590	6,990	7,500	7,990
	Men	5,810	4,940	5,150	5,140	5,500
20-24	Women	6,510	5,160	5,420	5,570	5,790
	Men	5,670	4,400	4,370	4,490	4,330
25-29	Women	850	640	660	660	720
	Men	770	540	500	480	560
30-34	Women	210	180	160	150	160
	Men	210	170	160	130	130
35 and over	Women	130	140	120	150	150
	Men	130	130	140	110	100
All ages	Women	24,930	22,170	23,220	24,750	26,790
	Men	18,870	16,370	16,800	17,340	18,480

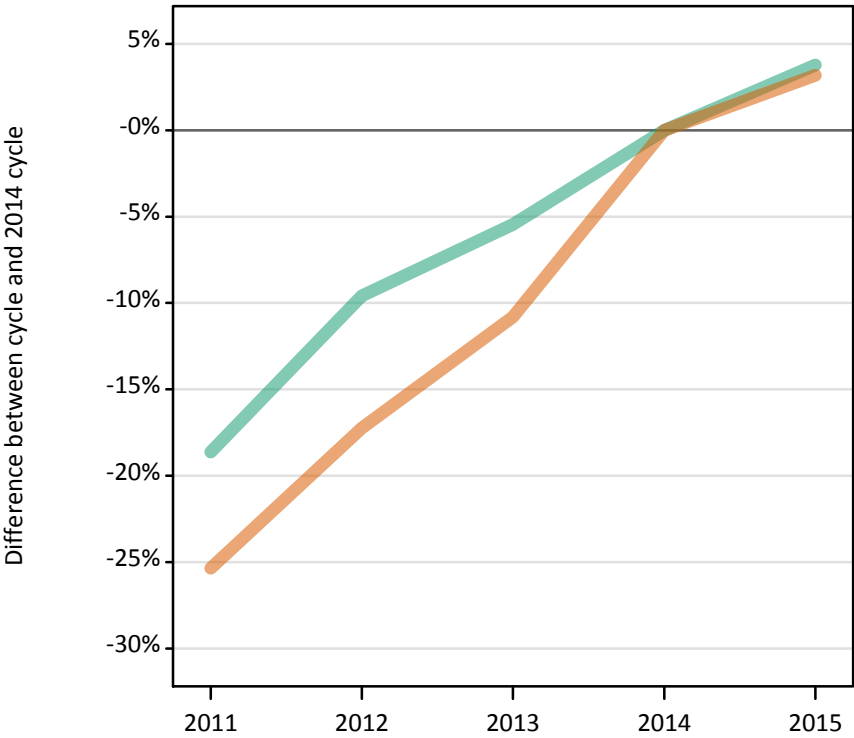
F.2.28 Applicants by age and sex : EU (excluding UK)

Difference between cycle and 2014 cycle

Age group and sex of applicant		2011	2012	2013	2014	2015
Under 18	Women	-13%	-14%	-12%	0%	10%
	Men	-10%	-17%	-6%	0%	20%
18	Women	-7%	-11%	-7%	0%	12%
	Men	-10%	-10%	-8%	0%	11%
19	Women	-2%	-12%	-7%	0%	7%
	Men	13%	-4%	0%	0%	7%
20-24	Women	17%	-7%	-3%	0%	4%
	Men	26%	-2%	-3%	0%	-4%
25-29	Women	28%	-3%	-0%	0%	9%
	Men	59%	12%	4%	0%	15%
30-34	Women	39%	19%	7%	0%	9%
	Men	62%	30%	25%	0%	-1%
35 and over	Women	-10%	-5%	-21%	0%	4%
	Men	20%	15%	23%	0%	-9%
All ages	Women	1%	-10%	-6%	0%	8%
	Men	9%	-6%	-3%	0%	7%

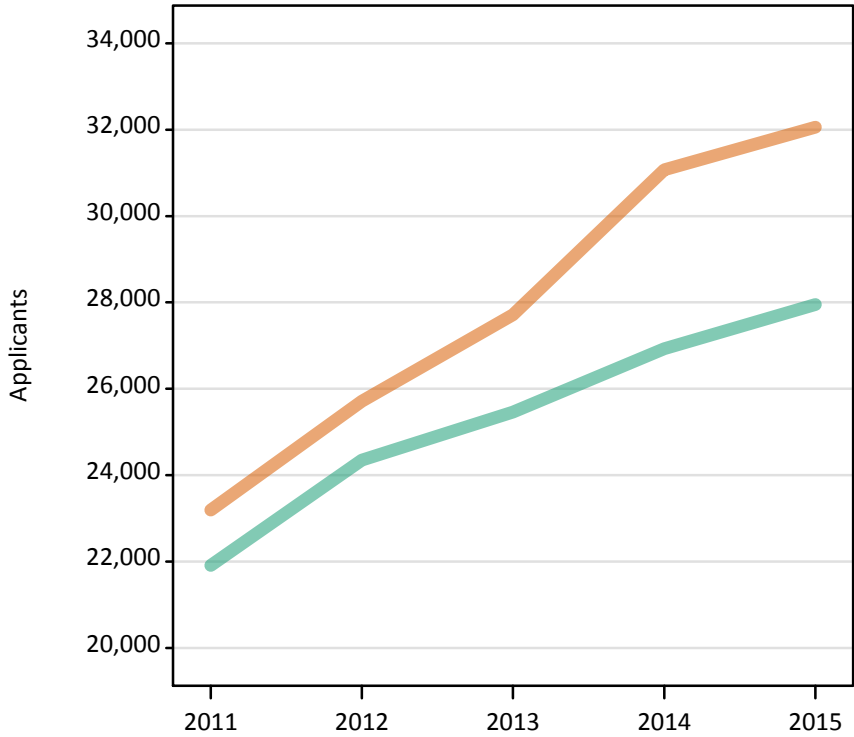
F.2.29 Applicants by sex : Not EU
Difference between cycle and 2014 cycle

Men
Women



F.2.30 Applicants by sex : Not EU

Men
Women



F.2.31 Applicants by age and sex : Not EU

Age group and sex of applicant		2011	2012	2013	2014	2015
Under 18	Women	1,680	2,040	2,370	2,810	2,700
	Men	1,460	1,880	2,120	2,400	2,410
18	Women	7,810	8,920	10,310	11,370	12,230
	Men	6,850	7,850	8,670	9,410	10,280
19	Women	6,340	7,020	7,300	8,220	8,340
	Men	5,600	6,090	6,240	6,660	6,880
20-24	Women	6,110	6,570	6,640	7,530	7,480
	Men	6,510	7,050	7,080	7,160	7,100
25-29	Women	800	730	710	740	880
	Men	970	940	900	820	810
30-34	Women	270	250	220	230	240
	Men	330	300	280	290	280
35 and over	Women	190	180	160	170	200
	Men	200	230	190	190	180
All ages	Women	23,190	25,710	27,710	31,070	32,060
	Men	21,910	24,350	25,460	26,930	27,950

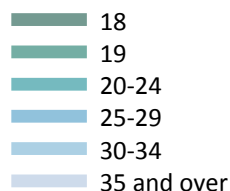
F.2.32 Applicants by age and sex : Not EU

Difference between cycle and 2014 cycle

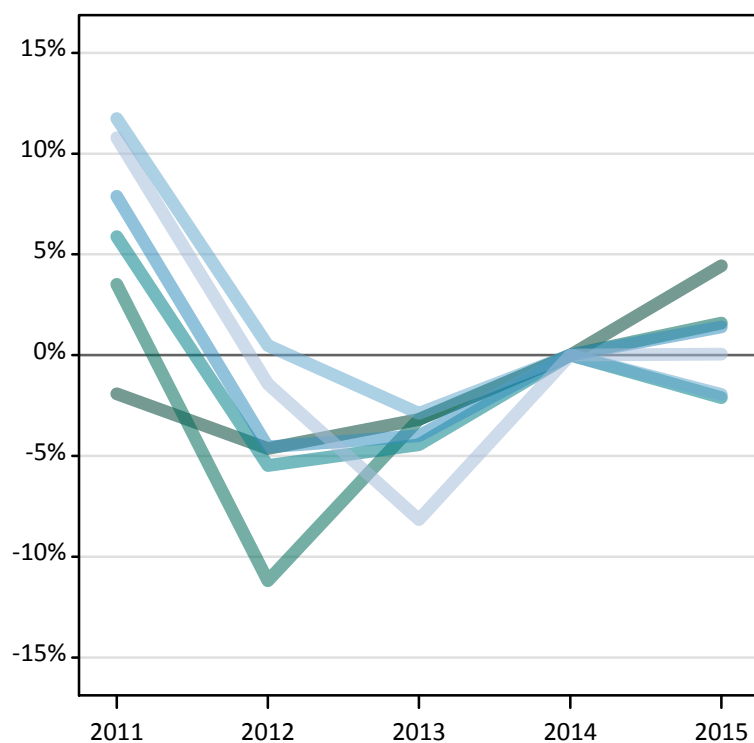
Age group and sex of applicant		2011	2012	2013	2014	2015
Under 18	Women	-40%	-27%	-15%	0%	-4%
	Men	-39%	-21%	-12%	0%	0%
18	Women	-31%	-22%	-9%	0%	8%
	Men	-27%	-17%	-8%	0%	9%
19	Women	-23%	-15%	-11%	0%	1%
	Men	-16%	-9%	-6%	0%	3%
20-24	Women	-19%	-13%	-12%	0%	-1%
	Men	-9%	-1%	-1%	0%	-1%
25-29	Women	7%	-1%	-4%	0%	18%
	Men	17%	14%	9%	0%	-1%
30-34	Women	18%	9%	-4%	0%	5%
	Men	15%	5%	-3%	0%	-2%
35 and over	Women	11%	7%	-8%	0%	20%
	Men	3%	17%	-4%	0%	-6%
All ages	Women	-25%	-17%	-11%	0%	3%
	Men	-19%	-10%	-5%	0%	4%

F.2.33 Applicants by domicile and age : All domiciles

Difference between cycle and 2014 cycle



Difference between cycle and 2014 cycle



F.2.34 Applicants by domicile and age : All domiciles

Domicile and age group		2011	2012	2013	2014	2015
All domiciles	Under 18	8,210	8,500	9,080	10,140	10,600
	18	293,000	284,900	289,210	298,720	311,950
	19	128,700	110,420	120,380	124,340	126,320
	20-24	119,910	107,060	108,220	113,260	110,870
	25-29	30,790	27,240	27,400	28,540	28,940
	30-34	16,780	15,090	14,580	15,020	14,720
	35 and over	25,190	22,410	20,880	22,740	22,750

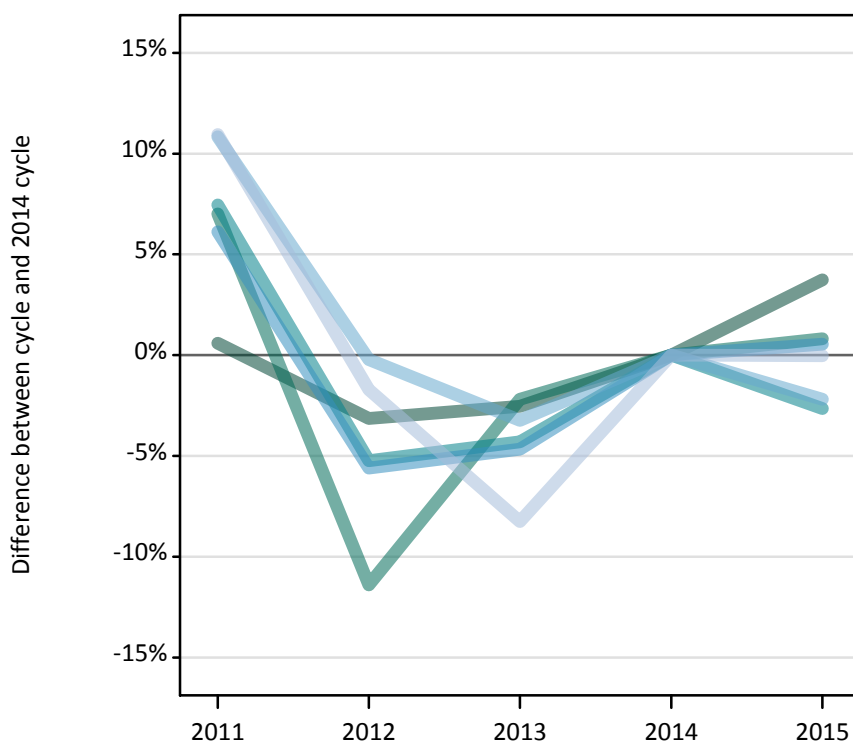
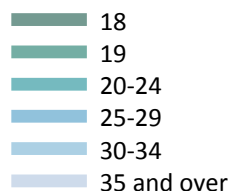
F.2.35 Applicants by domicile and age : All domiciles

Difference between cycle and 2014 cycle

Domicile and age group		2011	2012	2013	2014	2015
All domiciles	Under 18	-19%	-16%	-10%	0%	5%
	18	-2%	-5%	-3%	0%	4%
	19	4%	-11%	-3%	0%	2%
	20-24	6%	-5%	-4%	0%	-2%
	25-29	8%	-5%	-4%	0%	1%
	30-34	12%	0%	-3%	0%	-2%
	35 and over	11%	-1%	-8%	0%	0%

F.2.36 Applicants by domicile and age : UK

Difference between cycle and 2014 cycle



F.2.37 Applicants by domicile and age : UK

Domicile and age group		2011	2012	2013	2014	2015
UK	Under 18	2,120	1,750	1,580	1,590	1,700
	18	265,130	255,300	256,870	263,560	273,400
	19	103,600	85,770	94,700	96,820	97,610
	20-24	95,120	83,880	84,710	88,520	86,170
	25-29	27,410	24,390	24,630	25,830	25,970
	30-34	15,770	14,200	13,770	14,230	13,910
	35 and over	24,540	21,740	20,290	22,120	22,110

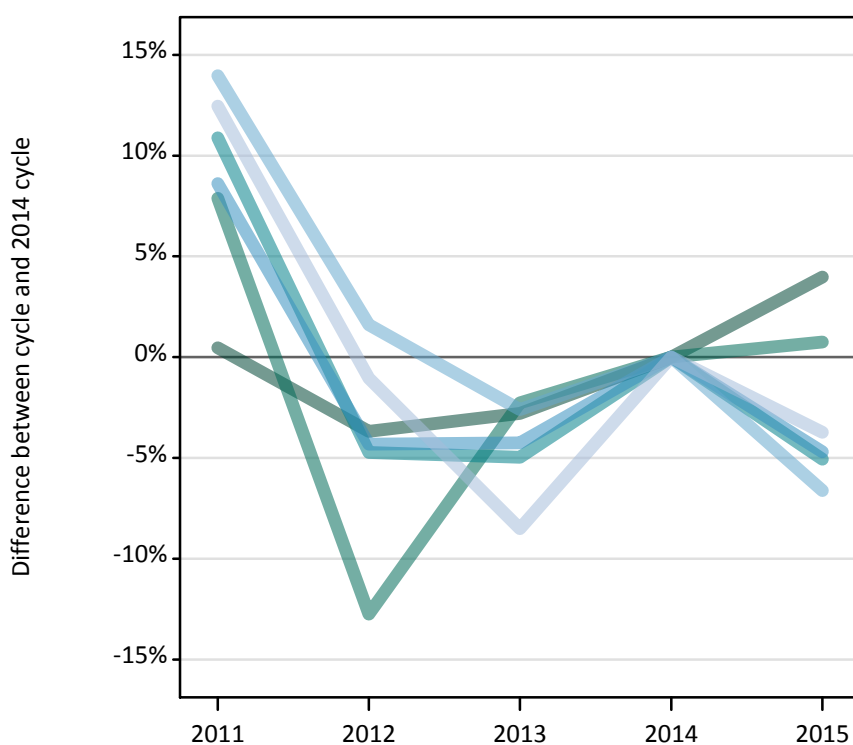
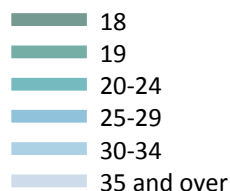
F.2.38 Applicants by domicile and age : UK

Difference between cycle and 2014 cycle

Domicile and age group		2011	2012	2013	2014	2015
UK	Under 18	33%	10%	-1%	0%	7%
	18	1%	-3%	-3%	0%	4%
	19	7%	-11%	-2%	0%	1%
	20-24	7%	-5%	-4%	0%	-3%
	25-29	6%	-6%	-5%	0%	1%
	30-34	11%	-0%	-3%	0%	-2%
	35 and over	11%	-2%	-8%	0%	-0%

F.2.39 Applicants by domicile and age : England

Difference between cycle and 2014 cycle



F.2.40 Applicants by domicile and age : England

Domicile and age group		2011	2012	2013	2014	2015
England	Under 18	1,120	880	830	880	930
	18	222,390	213,220	215,180	221,370	230,160
	19	90,970	73,570	82,410	84,320	84,950
	20-24	78,400	67,360	67,190	70,700	67,120
	25-29	22,330	19,670	19,680	20,560	19,590
	30-34	13,260	11,820	11,330	11,640	10,870
	35 and over	21,120	18,590	17,190	18,790	18,080

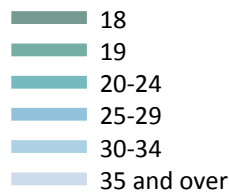
F.2.41 Applicants by domicile and age : England

Difference between cycle and 2014 cycle

Domicile and age group		2011	2012	2013	2014	2015
England	Under 18	27%	-0%	-5%	0%	6%
	18	0%	-4%	-3%	0%	4%
	19	8%	-13%	-2%	0%	1%
	20-24	11%	-5%	-5%	0%	-5%
	25-29	9%	-4%	-4%	0%	-5%
	30-34	14%	2%	-3%	0%	-7%
	35 and over	12%	-1%	-9%	0%	-4%

F.2.42 Applicants by domicile and age : Northern Ireland

Difference between cycle and 2014 cycle



F.2.43 Applicants by domicile and age : Northern Ireland

Domicile and age group		2011	2012	2013	2014	2015
Northern Ireland	Under 18	50	50	40	30	30
	18	11,940	11,690	11,690	11,490	11,960
	19	3,020	2,670	2,950	3,030	3,090
	20-24	3,220	3,120	3,660	3,750	3,690
	25-29	780	670	840	840	850
	30-34	270	280	360	370	400
	35 and over	360	320	420	420	420

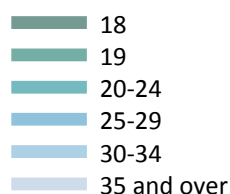
F.2.44 Applicants by domicile and age : Northern Ireland

Difference between cycle and 2014 cycle

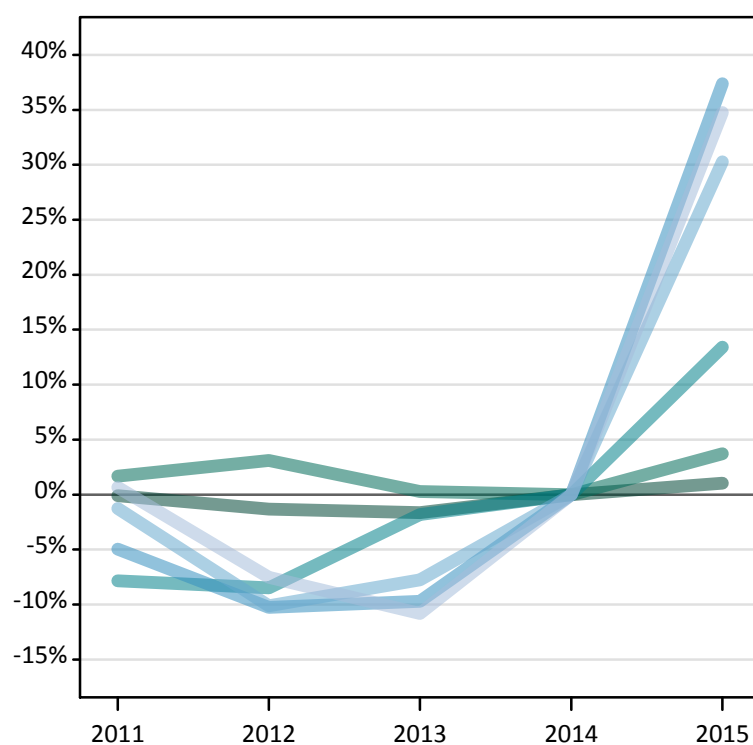
Domicile and age group		2011	2012	2013	2014	2015
Northern Ireland	Under 18	68%	82%	25%	0%	21%
	18	4%	2%	2%	0%	4%
	19	-0%	-12%	-3%	0%	2%
	20-24	-14%	-17%	-2%	0%	-2%
	25-29	-7%	-21%	0%	0%	1%
	30-34	-26%	-24%	-1%	0%	10%
	35 and over	-13%	-24%	0%	0%	1%

F.2.45 Applicants by domicile and age : Scotland

Difference between cycle and 2014 cycle



Difference between cycle and 2014 cycle



F.2.46 Applicants by domicile and age : Scotland

Domicile and age group		2011	2012	2013	2014	2015
Scotland	Under 18	900	790	670	660	710
	18	19,280	19,040	18,980	19,300	19,500
	19	5,490	5,560	5,410	5,400	5,600
	20-24	9,480	9,420	10,100	10,290	11,670
	25-29	2,990	2,830	2,840	3,150	4,330
	30-34	1,550	1,410	1,450	1,570	2,050
	35 and over	2,100	1,930	1,860	2,090	2,810

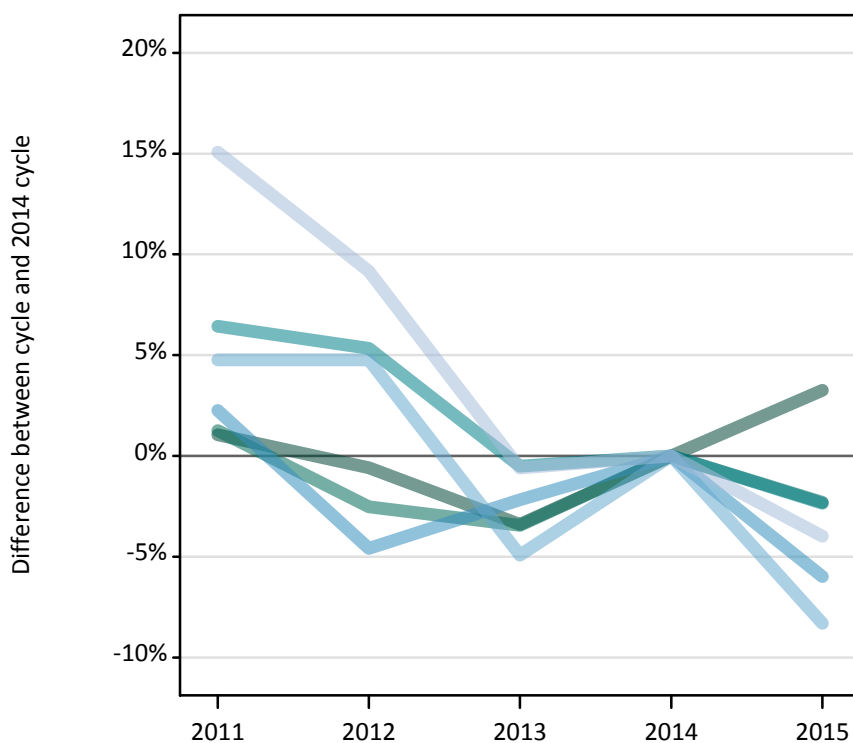
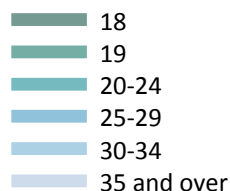
F.2.47 Applicants by domicile and age : Scotland

Difference between cycle and 2014 cycle

Domicile and age group		2011	2012	2013	2014	2015
Scotland	Under 18	37%	20%	2%	0%	8%
	18	-0%	-1%	-2%	0%	1%
	19	2%	3%	0%	0%	4%
	20-24	-8%	-8%	-2%	0%	13%
	25-29	-5%	-10%	-10%	0%	37%
	30-34	-1%	-10%	-8%	0%	30%
	35 and over	1%	-8%	-11%	0%	35%

F.2.48 Applicants by domicile and age : Wales

Difference between cycle and 2014 cycle



F.2.49 Applicants by domicile and age : Wales

Domicile and age group		2011	2012	2013	2014	2015
Wales	Under 18	50	30	40	30	20
	18	11,530	11,340	11,020	11,410	11,780
	19	4,120	3,970	3,930	4,070	3,980
	20-24	4,020	3,980	3,760	3,780	3,690
	25-29	1,320	1,230	1,260	1,290	1,210
	30-34	680	680	620	650	600
	35 and over	950	910	820	830	800

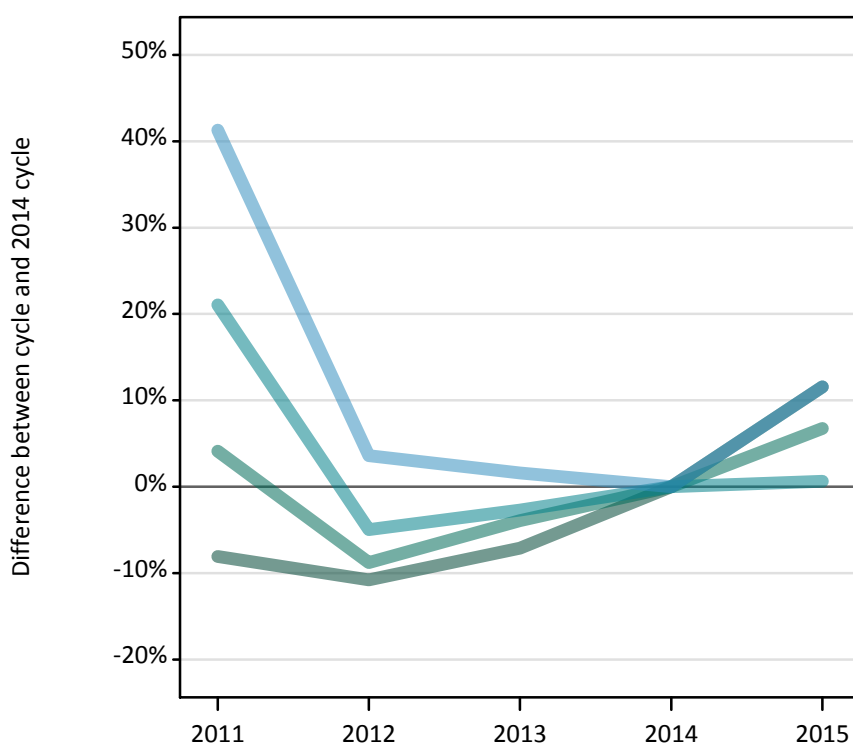
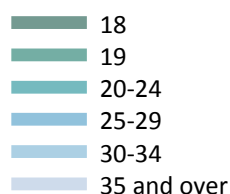
F.2.50 Applicants by domicile and age : Wales

Difference between cycle and 2014 cycle

Domicile and age group		2011	2012	2013	2014	2015
Wales	Under 18	64%	-7%	36%	0%	-29%
	18	1%	-1%	-3%	0%	3%
	19	1%	-3%	-3%	0%	-2%
	20-24	6%	5%	-1%	0%	-2%
	25-29	2%	-5%	-2%	0%	-6%
	30-34	5%	5%	-5%	0%	-8%
	35 and over	15%	9%	-1%	0%	-4%

F.2.51 Applicants by domicile and age : EU (excluding UK)

Difference between cycle and 2014 cycle



F.2.52 Applicants by domicile and age : EU (excluding UK)

Domicile and age group		2011	2012	2013	2014	2015
EU (excluding UK)	Under 18	2,950	2,840	3,010	3,340	3,800
	18	13,220	12,830	13,360	14,380	16,040
	19	13,160	11,530	12,140	12,640	13,490
	20-24	12,180	9,560	9,790	10,060	10,120
	25-29	1,610	1,180	1,160	1,140	1,270
	30-34	410	350	320	280	290
	35 and over	260	270	250	260	250

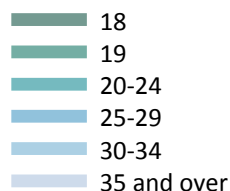
F.2.53 Applicants by domicile and age : EU (excluding UK)

Difference between cycle and 2014 cycle

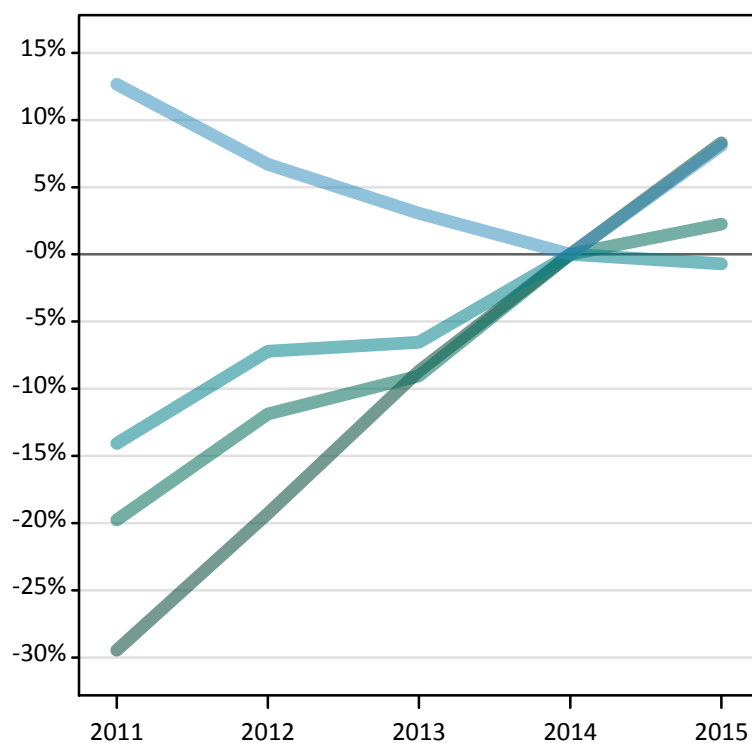
Domicile and age group		2011	2012	2013	2014	2015
EU (excluding UK)	Under 18	-12%	-15%	-10%	0%	14%
	18	-8%	-11%	-7%	0%	12%
	19	4%	-9%	-4%	0%	7%
	20-24	21%	-5%	-3%	0%	1%
	25-29	41%	4%	2%	0%	12%
	30-34	49%	25%	16%	0%	5%
	35 and over	3%	4%	-2%	0%	-2%

F.2.54 Applicants by domicile and age : Not EU

Difference between cycle and 2014 cycle



Difference between cycle and 2014 cycle



F.2.55 Applicants by domicile and age : Not EU

Domicile and age group		2011	2012	2013	2014	2015
Not EU	Under 18	3,140	3,920	4,490	5,210	5,100
	18	14,660	16,770	18,980	20,780	22,510
	19	11,940	13,120	13,540	14,880	15,220
	20-24	12,620	13,630	13,720	14,680	14,580
	25-29	1,760	1,670	1,610	1,570	1,690
	30-34	600	550	500	520	520
	35 and over	390	410	340	360	380

F.2.56 Applicants by domicile and age : Not EU

Difference between cycle and 2014 cycle

Domicile and age group		2011	2012	2013	2014	2015
Not EU	Under 18	-40%	-25%	-14%	0%	-2%
	18	-29%	-19%	-9%	0%	8%
	19	-20%	-12%	-9%	0%	2%
	20-24	-14%	-7%	-7%	0%	-1%
	25-29	13%	7%	3%	0%	8%
	30-34	16%	7%	-3%	0%	1%
	35 and over	7%	12%	-6%	0%	6%

F.2.57 Technical notes and definitions

Applicants have been able to submit applications for all 2015 courses since early September.

People who submit their applications to UCAS by the January deadline are considered 'on time' applicants for the large majority of courses offered through UCAS. Some art and design courses have a later deadline of 24 March. Almost all main scheme applications have been received by the 24 March deadline.

In 2015, a set of courses relating to teacher training that historically would only have been available through UCAS Teacher Training, and therefore not previously counted in the scope of this statistical release, were brought into the undergraduate UCAS scheme. These additional courses are all offered by providers based in Scotland and are in the JACS3 detailed subject reporting grouping of 'X1 - Training Teachers'.

The large majority of applications to the additional courses are from applicants living in Scotland and the increase indicated in Scottish domiciled applicants during the 2015 cycle is substantially a result of these changes.

To help comparisons through time, additional tables are available on the UCAS website that exclude any applications made by applicants to subject group 'X1' at Scottish providers. These tables provide a better 'like for like' comparison particularly when considering Scottish domiciled applicants and Scottish providers.

Counts of the number of applicants reported have been rounded to the nearest 10 applicants, this may result in instances where totals do not equal the sum of the components. Proportional changes have been rounded to the nearest whole percentage point.

Age

This statistical release uses country-specific age definitions which align with the cut off points for school/college cohorts within the different administrations of the UK. For England and Wales ages are defined on the 31 August, for Northern Ireland on the 1 July and for Scotland on the 28 February the following year. Defining ages in this way matches the assignment of children to school cohorts. For applicants outside of the UK the cohort cut off for England and Wales has been used.

Applicant

A person who has made an application in the UCAS system during the cycle reported, this includes those who submit applications for deferred entry. RPAs are excluded.

Application

An application to a course at an provider made by an applicant in the UCAS main scheme. Applicants may make up to five main scheme applications.

Country of provider

An applicant may be counted once for each provider country they have applied to in the main scheme. If an applicant has applied to providers in multiple countries then the applicant is counted once within each country of provider applied to.

This statistical release excludes a small number of applications to a provider based in the EU.

Domicile

Declared area of permanent residence. The Channel Islands and the Isle of Man have been assigned as 'Not EU'.

First time applicant

An applicant that did not apply to the UCAS scheme in the previous cycle.

Main scheme

The main UCAS application scheme through which up to five providers/courses can be applied to. This opens in September and closes to new applications on 30 June the following year.

Reapplicant

An applicant that applied to the UCAS scheme in the previous cycle.

F.2.58 Technical notes and definitions: continued

Subject group

The JACS3 classification used to classify courses into subject groups.

Tariff group of provider

Providers are grouped as higher, medium or lower tariff based on their average levels of attainment of their accepted applicants (summarised through UCAS Tariff points) in recent cycles. Each group of providers accounted for around a third of all UK 18 year old acceptances in recent cycles.