



WHO WILL YOU TALK TO FIRST? GET READY TO ASK YOUR QUESTIONS.

UNIVERSITIES & COLLEGES

| | |
|---------------------------------|---|
| University Of Aberdeen | B 21 |
| Abertay University | D 104 |
| Aberystwyth University | E 129 |
| ACM | C 145 |
| Arts University Bournemouth | B 29 |
| Aston University, Birmingham UK | E 121 |
| Bangor University | C 57 |
| University of Bath | A 152 |
| Bath Spa University | A 1 |
| University of Bedfordshire | D 92 |
| BIMM University | |
| BIMM UNIVERSITY | A university for the creative industries D 109 |
| Birkbeck University of London | E 135 |
| University of Birmingham | D 96 |
| University College Birmingham | E 118 |
| Birmingham City University | A 15 |
| Birmingham Newman University | A 14 |
| Boomsatsuma | D 99 |
| Bournemouth University | B 148 |
| University of Bradford | B 46 |
| University of Brighton | B 20 |
| University of Bristol | B 32 |
| Brunel University of London | C 58 |
| The University Of Buckingham | C 69 |
| Buckinghamshire New University | C 79 |
| University of Cambridge | B 43 |

| | |
|--|-------|
| Canterbury Christ Church University | B 45 |
| Cardiff University | E 117 |
| Cardiff Metropolitan University | B 24 |
| University of Chester | B 27 |
| City St George's, University of London | B 31 |
| Coventry University | D 94 |
| University for the Creative Arts | C 71 |
| University of Cumbria | C 83 |
| dBs Institute of Music | E 126 |
| De Montfort University | E 122 |
| University of Derby | D 95 |
| University of Dundee | E 125 |
| Durham University | C 146 |
| University of East Anglia (UEA) | C 70 |
| University of East London | |
|  University of East London | E 114 |
| Edge Hill University | E 130 |
| The University of Edinburgh | B 38 |
| Escape Studios - School for Animation, Games and VFX | B 52 |
| ESCP Business School Europe | C 68 |
| University of Essex | C 59 |
| University of Exeter | D 91 |
| Falmouth University | C 67 |
| Futureworks | D 105 |
| University of Glasgow | A 13 |
| University of Gloucestershire | A 9 |
| Harper Adams University | E 124 |
| Hartpury University | D 113 |
| Haybridge SCITT | C 78 |
| Hereford College of Arts | D 108 |
| Heriot-Watt University | C 65 |
| University of Hertfordshire | B 147 |
| University of Hull | B 22 |
| Imperial College London | B 23 |
| The Institute of Contemporary Music Performance (ICMP) | C 73 |
| Keele University | D 100 |
| University of Kent | D 106 |
| King's College London | A 7 |
| Kingston University London | B 55 |
| University of Lancashire | A 11 |
| Lancaster University | B 34 |
| The University of Law | E 116 |
| University of Leeds | E 119 |
| Leeds Arts University | B 40 |
| Leeds Beckett University | A 17 |
| Leeds Trinity University | B 48 |
| University Of Leicester | A 18 |
| University of Lincoln | D 140 |
| Lincoln Bishop University | B 53 |
| University of Liverpool | B 36 |
| Liverpool Hope University | A 8 |
| Liverpool John Moores University | E 120 |
| LMA | D 86 |
| University of the Arts London (UAL) | C 77 |
| London Metropolitan University | D 98 |

| | |
|---|-------|
| London South Bank University | A 6 |
| Loughborough College | E 134 |
| Loughborough University | A 151 |
| The University of Manchester | B 30 |
| University of Greater Manchester | B 26 |
| Manchester Metropolitan University | B 47 |
| UCEN Manchester | B 37 |
| Middlesex University London | A 5 |
| New Model in Technology & Engineering | E 133 |
| Newcastle University | A 12 |
| University Of Northampton | A 16 |
| The Northern School of Art | E 127 |
| Northumbria University | D 141 |
| Norwich University of the Arts | E 131 |
| University of Nottingham | E 115 |
| Nottingham Trent University | E 128 |
| University of Oxford | E 138 |
| Oxford Brookes University | B 51 |
| University of Plymouth | D 107 |
| Arts University Plymouth | C 61 |
| Plymouth Marjon University | C 74 |
| University of Portsmouth | A 10 |
| Queen Mary University of London | D 93 |
| Queen's University Belfast | E 136 |
| Ravensbourne University London | B 54 |
| University of Reading | C 75 |
| University of Roehampton | A 3 |
| Royal Academy of Dance | B 44 |
| Royal Central School of Speech and Drama | E 137 |
| Royal Holloway, University of London | E 139 |
| Royal Veterinary College | B 33 |
| SAE Creative Media Education | C 72 |
| University of Salford | B 41 |
| University of Sheffield | A 4 |
| Sheffield Hallam University | A 2 |
| SOAS University of London | C 64 |
| University Of Southampton | B 49 |
| Southampton Solent University | C 62 |
| SP Jain London School of Management | A 150 |
| Spirit Studios | C 76 |
| SRUC | A 19 |
| University of St Andrews | D 87 |
| University of Staffordshire | E 123 |
| University of Stirling | D 112 |
| Stranmillis University College, Belfast | D 103 |
| University of Strathclyde | B 28 |
| University of Suffolk | C 80 |
| University of Sunderland | B 149 |
| University of Sussex | D 97 |
| Swansea University | C 60 |
| Teesside University | B 50 |
| UCFB (University Campus of Football Business) | B 56 |
| University Academy 92 (UA92) | B 25 |
| University of South Wales | D 110 |
| University Of Wales Trinity St David | C 66 |
| University of Warwick | B 35 |
| University of West London | D 144 |
| University of the West of England (UWE Bristol) | B 39 |

| | |
|--|-------|
| University of Winchester | C 63 |
| University of Wolverhampton | |
|  UNIVERSITY OF WOLVERHAMPTON | D 90 |
| University of Worcester | B 42 |
| Wrexham University | D 142 |
| University of York | E 132 |
| York St John University | D 143 |

EMPLOYERS & APPRENTICESHIPS

| | |
|---|---|
| Accenture | A |
| The Army | B |
| Dyson Institute of Engineering & Technology | F |
| Forvis Mazars in the UK | G |
| ICAEW | D |
| Institute of Osteopathy | C |
| Royal Navy | E |

STUDENT LIFE

| | |
|--------------------|-------|
| Blackbullion | D 102 |
| Homes For Students | D 101 |
| UHomes | E 153 |
| Unibuddy | D 111 |

SUBJECT SPOTLIGHTS

| | |
|--|------|
| Engineering at Canterbury Christ Church University | C 81 |
| Coventry University - Social Sciences and Humanities | D 88 |
| Springpod | C 84 |
| The University of Law, Tech Zone | D 89 |
| University of Wolverhampton - Health and Wellbeing | C 82 |

INFORMATION & ADVICE

| | |
|------|------|
| UCAS | C 85 |
|------|------|

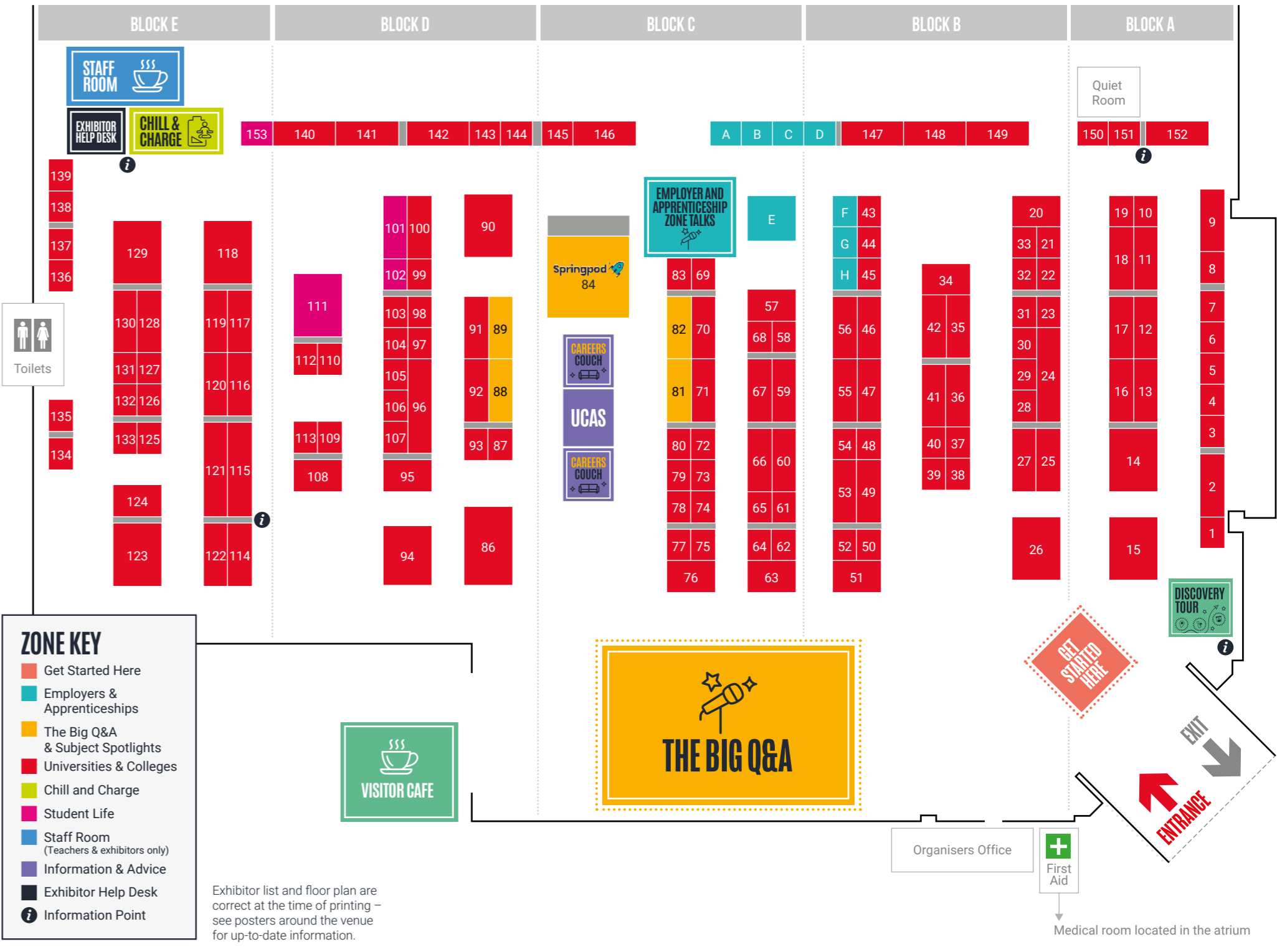
UCAS DISCOVERY UK TOUR

THE BIG Q&A



In association with:
HELŌA
BIRMINGHAM 2026
EVENT GUIDE

Notes:



BIRMINGHAM CITY University

Beyond.

Visit us at Stand 15

Open Day 26 and 27 June

www.bcu.ac.uk/open-day-ucas

THE BIG Q&A

GOT LOTS OF QUESTIONS ABOUT YOUR FUTURE? HERE ARE A FEW WAYS TO FIND THE ANSWERS YOU NEED TODAY:

1

GET STARTED HERE

Head straight to the Get Started Here zone to find out who's here, what's on offer, and for some advice on the all-important questions to ask.

2

DISCOVER THE POSSIBILITIES

Find out about all of your options after school or college. Head to the UCAS stand and The Big Q&A stage to hear from the experts and discover courses, apprenticeships, and all kinds of careers.

3

ASK QUESTIONS. GET ADVICE

Talk to different universities, colleges, conservatoires, apprenticeship providers, and employers to get the answers you need to find your path.

WHAT'S ON STAGE?

MONDAY 22 JUNE. THE BIG Q&A - LINE UP



| | |
|---------------|---|
| 09:50 - 10:00 | The Big Q&A: What's on and what to ask |
| 10:00 - 10:15 | Your options explained: How to figure out what's right for you |
| 10:20 - 10:35 | What I wish I'd known before starting University |
| 10:40 - 10:55 | How to stand out: UCAS application and personal statement tips |
| 11:00 - 11:15 | The Big Q&A: How to Ask the Questions today that Start Your Journey |
| 11:20 - 11:35 | Home from Home: Your Options |
| 11:40 - 11:55 | Your options explained: How to figure out what's right for you |
| 11:55 - 12:05 | The Big Q&A: What's on and what to ask |
| 12:10 - 12:25 | Health and Wellbeing |
| 12:30 - 12:45 | How to stand out: UCAS application and personal statement tips |
| 12:50 - 13:00 | The Big Q&A: What's on and what to ask |
| 13:10 - 13:25 | Your options explained: How to figure out what's right for you |
| 13:30 - 13:45 | Creative Careers |
| 13:50 - 14:05 | The Big Q&A: How to Ask the Questions today that Start Your Journey |
| 14:10 - 14:25 | How to stand out: UCAS application and personal statement tips |
| 14:30 - 14:45 | Your options explained: How to figure out what's right for you |

TUESDAY 23 JUNE. THE BIG Q&A - LINE UP

| | |
|---------------|---|
| 09:50 - 10:00 | The Big Q&A: What's on and what to ask |
| 10:00 - 10:15 | Your options explained: How to figure out what's right for you |
| 10:20 - 10:35 | What I wish I'd known before starting University |
| 10:40 - 10:55 | How to stand out: UCAS application and personal statement tips |
| 11:00 - 11:15 | The Big Q&A: How to Ask the Questions today that Start Your Journey |
| 11:20 - 11:35 | Student Finance |
| 11:40 - 11:55 | Your options explained: How to figure out what's right for you |
| 11:55 - 12:05 | The Big Q&A: What's on and what to ask |
| 12:10 - 12:25 | Health and Wellbeing |
| 12:30 - 12:45 | How to stand out: UCAS application and personal statement tips |
| 12:50 - 13:00 | The Big Q&A: What's on and what to ask |
| 13:10 - 13:25 | Your options explained: How to figure out what's right for you |
| 13:30 - 13:45 | Creative Careers |
| 13:50 - 14:05 | The Big Q&A: How to Ask the Questions today that Start Your Journey |
| 14:10 - 14:25 | How to stand out: UCAS application and personal statement tips |
| 14:30 - 14:45 | Your options explained: How to figure out what's right for you |



STUDENT ACCOMMODATION SPECIALISTS
WHY GO ANYWHERE ELSE?

55 CITIES

200+ PROPERTIES
55,000+ ROOMS



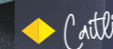
BEGIN YOUR UNIVERSITY JOURNEY WITH CONFIDENCE!
WEAREHOMESFORSTUDENTS.COM



EVERY STORY HAS A START

Visit the University of Wolverhampton stand.

Come and chat to our friendly team and discover the perfect course for you.



START YOUR CAREER NOW



Discover all you need to know about degree apprenticeships. Get expert advice, and search and apply for current opportunities at:
UCAS.com/Apprenticeships

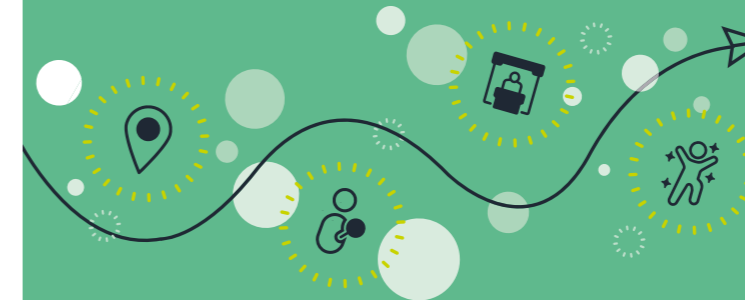
EMPLOYER & APPRENTICESHIP ZONE TALKS



MON 22 & TUE 23 JUNE

| | |
|---------------|---|
| 10:15 - 10:30 | Pathways into Engineering |
| 10:45 - 11:00 | What is an apprenticeship and is it right for me? |
| 11:15 - 11:30 | Careers in Accountancy: ICAEW & the ACA Pathway |
| 12:00 - 12:15 | What is an apprenticeship and is it right for me? |
| 12:45 - 13:00 | Becoming an Osteopath: What You Need to Know |
| 13:30 - 13:45 | What is an apprenticeship and is it right for me? |

DISCOVERY TOUR GUIDE



READY TO EXPLORE?

Join a Discovery Tour every 15 minutes from 9:45am – our Tour Guides will help you find your way around the event.
Meet at the Get Started Here area

Please note: If a tour reaches capacity, you may be offered an alternative time slot (subject to availability)

CAREERS COUCH

GOT QUESTIONS ABOUT YOUR NEXT STEPS?

Drop by the Careers Couch on the UCAS stand for expert guidance from a careers adviser