

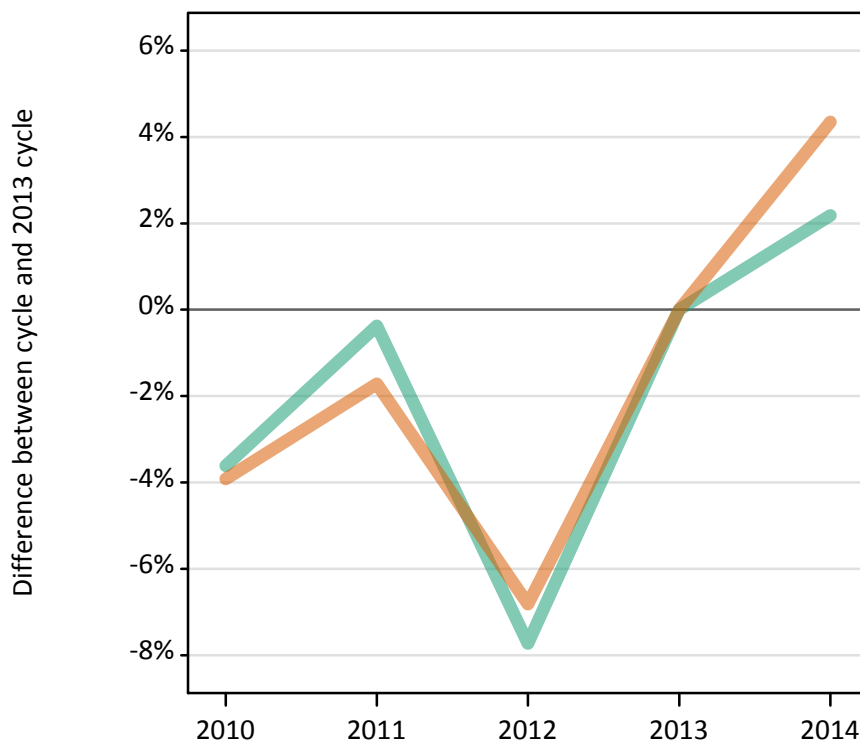
# Daily Clearing Analysis: Sex

**Analysis at 00:05 on Monday 18 August 2014 (4 days after A level results day)**

## S.1 Placed applicants from all domiciles by sex: 4 days after A level results day

Placed applicants: change relative to 2013 cycle totals

Men  
Women



## S.2 Placed applicants from all domiciles by sex: 4 days after A level results day

Applicant Status	Sex	2010	2011	2012	2013	2014
Placed	Men	182,580	188,730	174,800	189,440	193,580
	Women	227,030	232,220	220,190	236,290	246,550
	All	409,610	420,950	394,980	425,720	440,130

## S.3 Placed applicants from all domiciles by sex: 4 days after A level results day

Placed applicants: change relative to 2013 cycle totals

Applicant Status	Sex	2010	2011	2012	2013	2014
Placed	Men	-4%	-0%	-8%	0%	2%
	Women	-4%	-2%	-7%	0%	4%
	All	-4%	-1%	-7%	0%	3%

## S.4 Placed applicants from all domiciles by sex: 4 days after A level results day

Placed applicants: absolute change relative to 2013 cycle totals

Applicant Status	Sex	2010	2011	2012	2013	2014
Placed	Men	-6,850	-710	-14,640	0	4,140
	Women	-9,260	-4,060	-16,100	0	10,270
	All	-16,110	-4,770	-30,740	0	14,410

### S.5 Placed applicants from the UK by sex: 4 days after A level results day

Placed applicants: change relative to 2013 cycle totals

Men  
Women



### S.6 Placed applicants from the UK by sex: 4 days after A level results day

Applicant Status	Sex	2010	2011	2012	2013	2014
Placed	Men	160,400	166,170	153,520	166,680	169,900
	Women	202,620	206,330	195,110	209,360	217,300
	All	363,020	372,500	348,630	376,040	387,200

### S.7 Placed applicants from the UK by sex: 4 days after A level results day

Placed applicants: change relative to 2013 cycle totals

Applicant Status	Sex	2010	2011	2012	2013	2014
Placed	Men	-4%	-0%	-8%	0%	2%
	Women	-3%	-1%	-7%	0%	4%
	All	-3%	-1%	-7%	0%	3%

### S.8 Placed applicants from the UK by sex: 4 days after A level results day

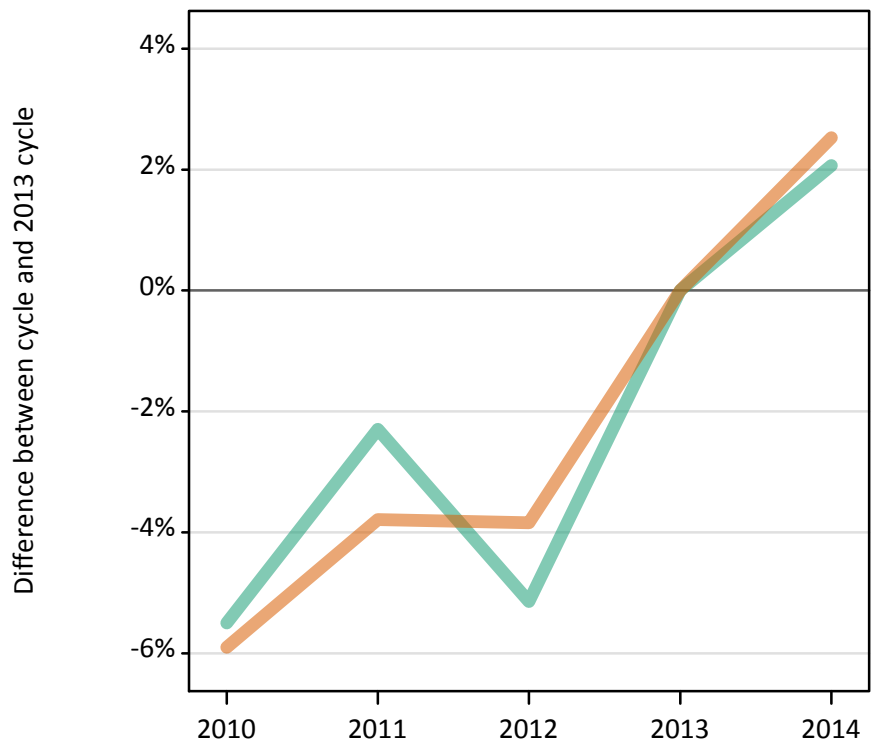
Placed applicants: absolute change relative to 2013 cycle totals

Applicant Status	Sex	2010	2011	2012	2013	2014
Placed	Men	-6,280	-510	-13,150	0	3,230
	Women	-6,740	-3,030	-14,250	0	7,940
	All	-13,020	-3,540	-27,410	0	11,170

### S.9 Placed 18 year old applicants from the UK by sex: 4 days after A level results day

Placed 18 year old applicants: change relative to 2013 cycle totals

Men  
Women



### S.10 Placed 18 year old applicants from the UK by sex: 4 days after A level results day

Applicant Status	Sex	2010	2011	2012	2013	2014
Placed	Men	87,330	90,290	87,660	92,420	94,330
	Women	108,950	111,400	111,340	115,790	118,710
	All	196,290	201,690	199,010	208,210	213,040

### S.11 Placed 18 year old applicants from the UK by sex: 4 days after A level results day

Placed 18 year old applicants: change relative to 2013 cycle totals

Applicant Status	Sex	2010	2011	2012	2013	2014
Placed	Men	-6%	-2%	-5%	0%	2%
	Women	-6%	-4%	-4%	0%	3%
	All	-6%	-3%	-4%	0%	2%

### S.12 Placed 18 year old applicants from the UK by sex: 4 days after A level results day

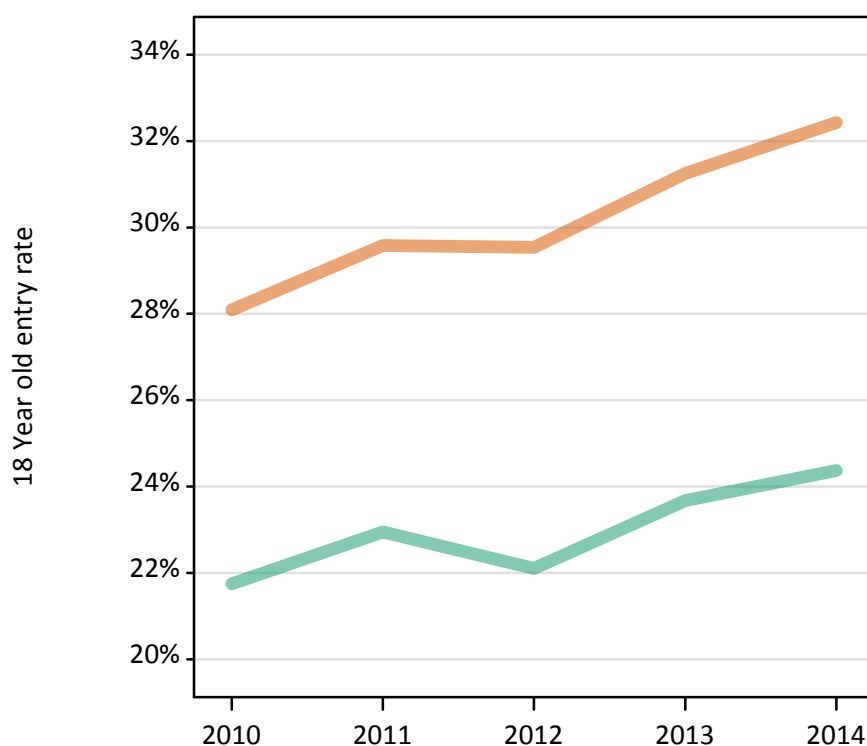
Placed 18 year old applicants: absolute change relative to 2013 cycle totals

Applicant Status	Sex	2010	2011	2012	2013	2014
Placed	Men	-5,080	-2,120	-4,750	0	1,910
	Women	-6,830	-4,390	-4,450	0	2,930
	All	-11,920	-6,510	-9,200	0	4,840

### S.13 Placed 18 year old applicants from the UK by sex: 4 days after A level results day

Placed 18 year old applicants: entry rate

Men  
Women



### S.14 Placed 18 year old applicants from the UK by sex: 4 days after A level results day

Placed 18 year old applicants: entry rate

Applicant Status	Sex	2010	2011	2012	2013	2014
Placed	Men	21.7%	22.9%	22.1%	23.7%	24.4%
	Women	28.1%	29.6%	29.5%	31.2%	32.4%
	All	24.9%	26.2%	25.7%	27.4%	28.3%

### S.15 Placed 18 year old applicants from the UK by sex: 4 days after A level results day

Placed 18 year old applicants: entry rate (indexed to 100 = Men)

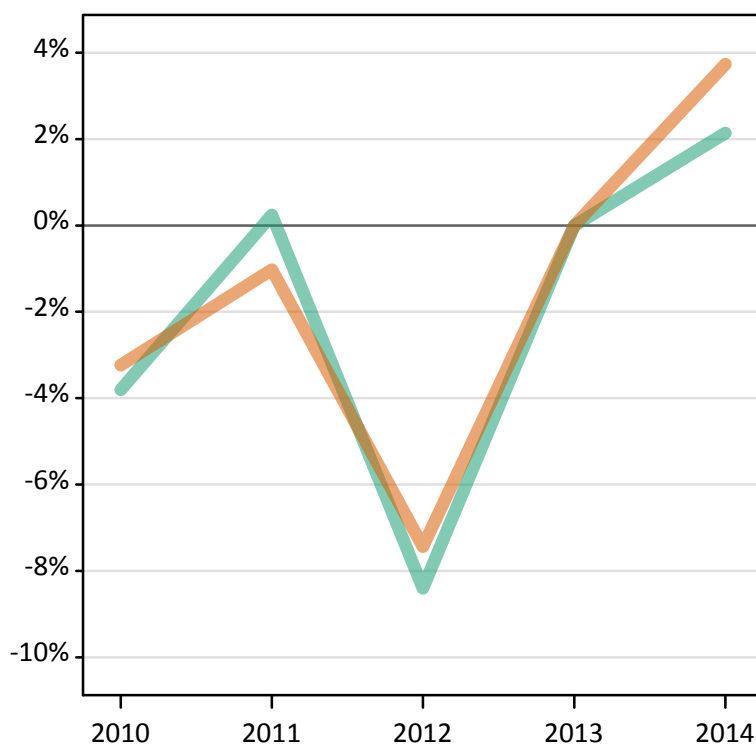
Applicant Status	Sex	2010	2011	2012	2013	2014
Placed	Men	100	100	100	100	100
	Women	129	129	134	132	133

### S.16 Placed applicants from England by sex: 4 days after A level results day

Placed applicants: change relative to 2013 cycle totals

Men  
Women

Difference between cycle and 2013 cycle



### S.17 Placed applicants from England by sex: 4 days after A level results day

Applicant Status	Sex	2010	2011	2012	2013	2014
Placed	Men	136,640	142,380	130,100	142,040	145,080
	Women	171,230	175,140	163,790	176,950	183,560
	All	307,870	317,520	293,890	319,000	328,640

### S.18 Placed applicants from England by sex: 4 days after A level results day

Placed applicants: change relative to 2013 cycle totals

Applicant Status	Sex	2010	2011	2012	2013	2014
Placed	Men	-4%	0%	-8%	0%	2%
	Women	-3%	-1%	-7%	0%	4%
	All	-3%	-0%	-8%	0%	3%

### S.19 Placed applicants from England by sex: 4 days after A level results day

Placed applicants: absolute change relative to 2013 cycle totals

Applicant Status	Sex	2010	2011	2012	2013	2014
Placed	Men	-5,410	340	-11,940	0	3,040
	Women	-5,720	-1,820	-13,160	0	6,610
	All	-11,130	-1,480	-25,100	0	9,650

### S.20 Placed 18 year old applicants from England by sex: 4 days after A level results day

Placed 18 year old applicants: change relative to 2013 cycle totals

Men  
Women



### S.21 Placed 18 year old applicants from England by sex: 4 days after A level results day

Applicant Status	Sex	2010	2011	2012	2013	2014
Placed	Men	73,880	77,110	74,830	79,040	80,940
	Women	91,050	94,280	93,770	98,020	100,630
	All	164,930	171,390	168,600	177,060	181,560

### S.22 Placed 18 year old applicants from England by sex: 4 days after A level results day

Placed 18 year old applicants: change relative to 2013 cycle totals

Applicant Status	Sex	2010	2011	2012	2013	2014
Placed	Men	-7%	-2%	-5%	0%	2%
	Women	-7%	-4%	-4%	0%	3%
	All	-7%	-3%	-5%	0%	3%

### S.23 Placed 18 year old applicants from England by sex: 4 days after A level results day

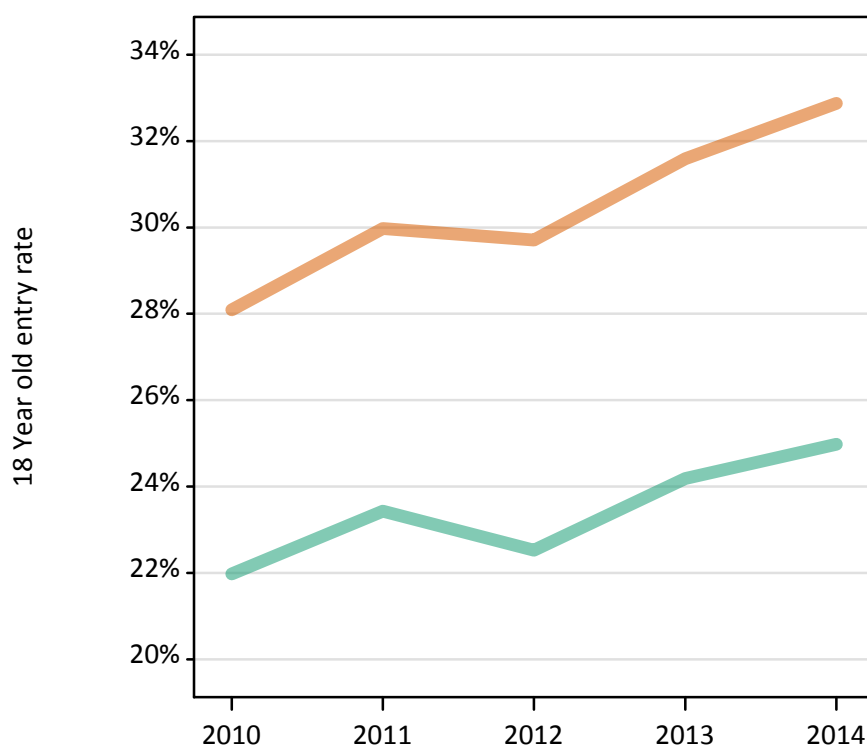
Placed 18 year old applicants: absolute change relative to 2013 cycle totals

Applicant Status	Sex	2010	2011	2012	2013	2014
Placed	Men	-5,160	-1,930	-4,210	0	1,900
	Women	-6,980	-3,740	-4,250	0	2,600
	All	-12,140	-5,670	-8,460	0	4,500

### S.24 Placed 18 year old applicants from England by sex: 4 days after A level results day

Placed 18 year old applicants: entry rate

Men  
Women



### S.25 Placed 18 year old applicants from England by sex: 4 days after A level results day

Placed 18 year old applicants: entry rate

Applicant Status	Sex	2010	2011	2012	2013	2014
Placed	Men	22.0%	23.4%	22.5%	24.2%	25.0%
	Women	28.1%	30.0%	29.7%	31.6%	32.9%
	All	25.0%	26.6%	26.0%	27.8%	28.8%

### S.26 Placed 18 year old applicants from England by sex: 4 days after A level results day

Placed 18 year old applicants: entry rate (indexed to 100 = Men)

Applicant Status	Sex	2010	2011	2012	2013	2014
Placed	Men	100	100	100	100	100
	Women	128	128	132	131	132

### S.27 Placed applicants from Northern Ireland by sex: 4 days after A level results day

Placed applicants: change relative to 2013 cycle totals

Men  
Women



### S.28 Placed applicants from Northern Ireland by sex: 4 days after A level results day

Applicant Status	Sex	2010	2011	2012	2013	2014
Placed	Men	5,200	5,470	4,900	5,590	5,610
	Women	6,710	6,710	6,400	7,040	7,000
	All	11,910	12,180	11,300	12,630	12,610

### S.29 Placed applicants from Northern Ireland by sex: 4 days after A level results day

Placed applicants: change relative to 2013 cycle totals

Applicant Status	Sex	2010	2011	2012	2013	2014
Placed	Men	-7%	-2%	-12%	0%	0%
	Women	-5%	-5%	-9%	0%	-1%
	All	-6%	-4%	-11%	0%	-0%

### S.30 Placed applicants from Northern Ireland by sex: 4 days after A level results day

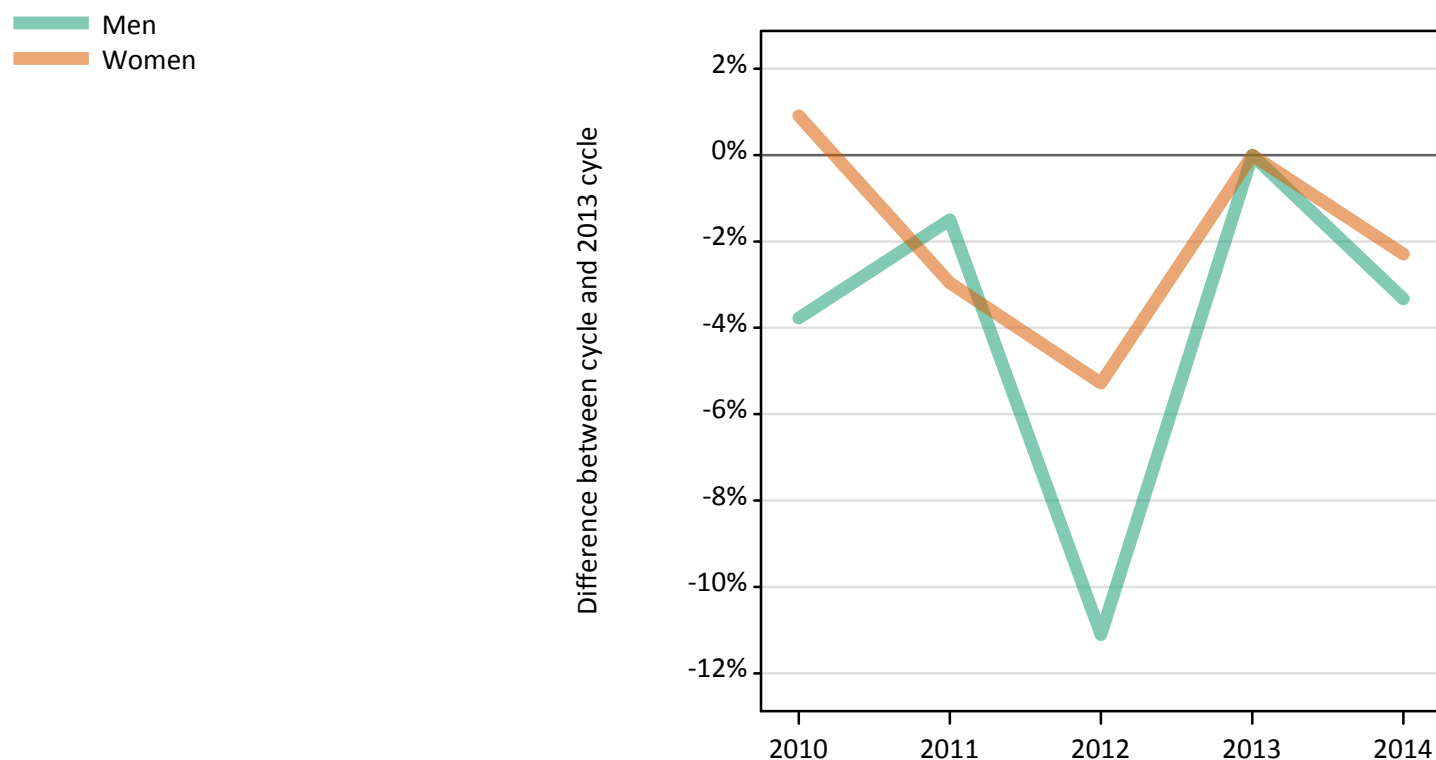
Placed applicants: absolute change relative to 2013 cycle totals

Applicant Status	Sex	2010	2011	2012	2013	2014
Placed	Men	-390	-120	-680	0	30
	Women	-330	-340	-650	0	-40
	All	-720	-450	-1,330	0	-20



### S.31 Placed 18 year old applicants from Northern Ireland by sex: 4 days after A level results day

Placed 18 year old applicants: change relative to 2013 cycle totals



### S.32 Placed 18 year old applicants from Northern Ireland by sex: 4 days after A level results day

Applicant Status	Sex	2010	2011	2012	2013	2014
Placed	Men	3,270	3,340	3,020	3,390	3,280
	Women	4,530	4,360	4,250	4,490	4,390
	All	7,800	7,700	7,270	7,880	7,670

### S.33 Placed 18 year old applicants from Northern Ireland by sex: 4 days after A level results day

Placed 18 year old applicants: change relative to 2013 cycle totals

Applicant Status	Sex	2010	2011	2012	2013	2014
Placed	Men	-4%	-2%	-11%	0%	-3%
	Women	1%	-3%	-5%	0%	-2%
	All	-1%	-2%	-8%	0%	-3%

### S.34 Placed 18 year old applicants from Northern Ireland by sex: 4 days after A level results day

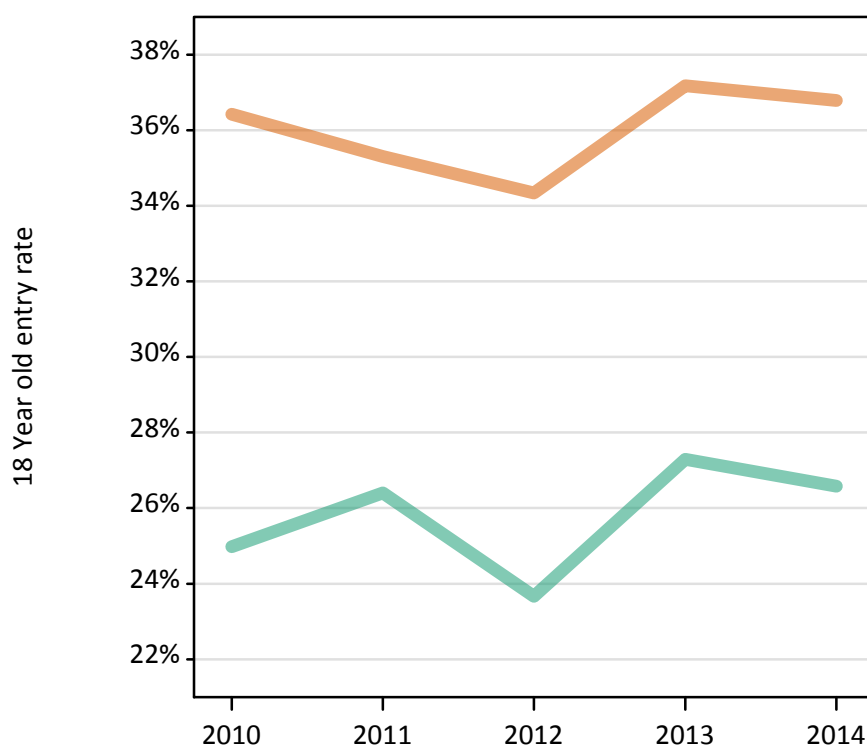
Placed 18 year old applicants: absolute change relative to 2013 cycle totals

Applicant Status	Sex	2010	2011	2012	2013	2014
Placed	Men	-130	-50	-380	0	-110
	Women	40	-130	-240	0	-100
	All	-90	-180	-610	0	-220

### S.35 Placed 18 year old applicants from Northern Ireland by sex: 4 days after A level results day

Placed 18 year old applicants: entry rate

Men  
Women



### S.36 Placed 18 year old applicants from Northern Ireland by sex: 4 days after A level results day

Placed 18 year old applicants: entry rate

Applicant Status	Sex	2010	2011	2012	2013	2014
Placed	Men	25.0%	26.4%	23.7%	27.3%	26.6%
	Women	36.4%	35.3%	34.3%	37.2%	36.8%
	All	30.6%	30.8%	28.9%	32.2%	31.6%

### S.37 Placed 18 year old applicants from Northern Ireland by sex: 4 days after A level results day

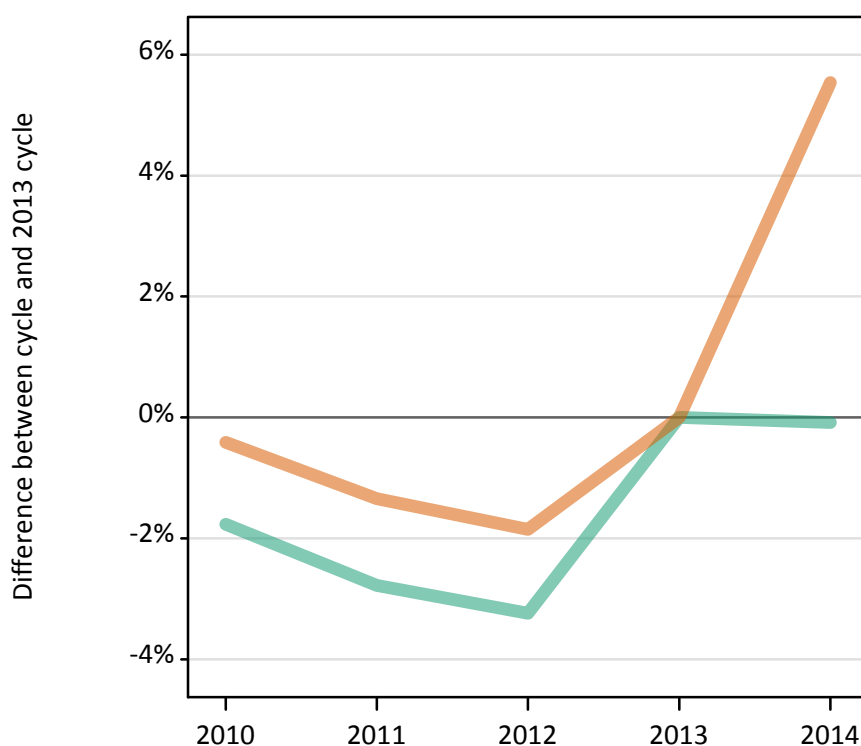
Placed 18 year old applicants: entry rate (indexed to 100 = Men)

Applicant Status	Sex	2010	2011	2012	2013	2014
Placed	Men	100	100	100	100	100
	Women	146	134	145	136	138

### S.38 Placed applicants from Scotland by sex: 4 days after A level results day

Placed applicants: change relative to 2013 cycle totals

Men  
Women



### S.39 Placed applicants from Scotland by sex: 4 days after A level results day

Applicant Status	Sex	2010	2011	2012	2013	2014
Placed	Men	11,560	11,440	11,380	11,760	11,750
	Women	15,650	15,500	15,420	15,710	16,580
	All	27,200	26,940	26,810	27,480	28,340

### S.40 Placed applicants from Scotland by sex: 4 days after A level results day

Placed applicants: change relative to 2013 cycle totals

Applicant Status	Sex	2010	2011	2012	2013	2014
Placed	Men	-2%	-3%	-3%	0%	-0%
	Women	-0%	-1%	-2%	0%	6%
	All	-1%	-2%	-2%	0%	3%

### S.41 Placed applicants from Scotland by sex: 4 days after A level results day

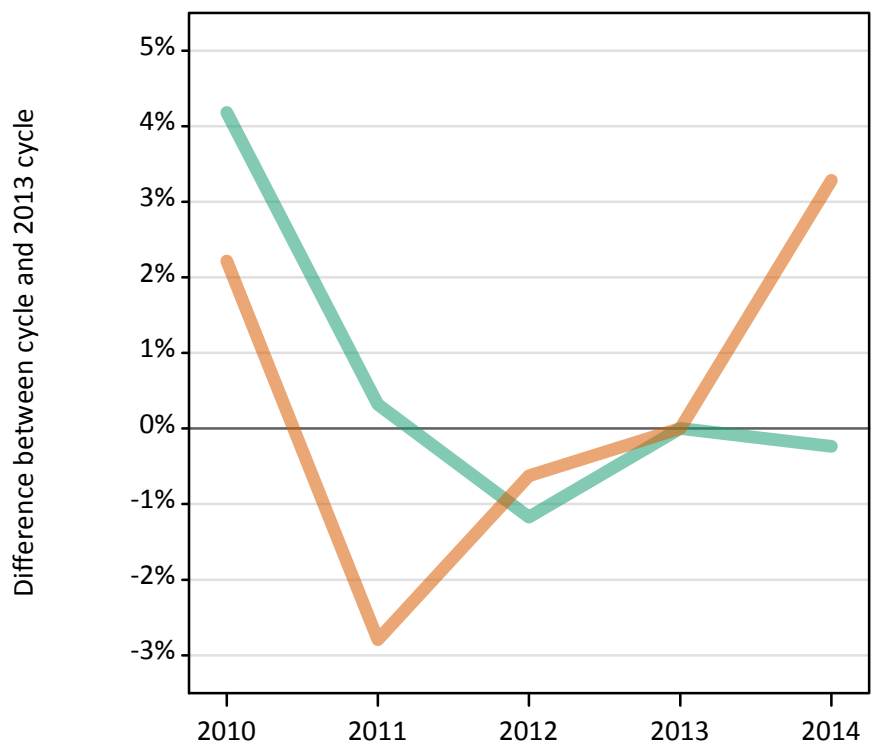
Placed applicants: absolute change relative to 2013 cycle totals

Applicant Status	Sex	2010	2011	2012	2013	2014
Placed	Men	-210	-330	-380	0	-10
	Women	-70	-210	-290	0	870
	All	-270	-540	-670	0	860

#### S.42 Placed 18 year old applicants from Scotland by sex: 4 days after A level results day

Placed 18 year old applicants: change relative to 2013 cycle totals

Men  
Women



#### S.43 Placed 18 year old applicants from Scotland by sex: 4 days after A level results day

Applicant Status	Sex	2010	2011	2012	2013	2014
Placed	Men	6,230	6,000	5,910	5,980	5,960
	Women	8,160	7,760	7,930	7,980	8,240
	All	14,390	13,750	13,840	13,960	14,210

#### S.44 Placed 18 year old applicants from Scotland by sex: 4 days after A level results day

Placed 18 year old applicants: change relative to 2013 cycle totals

Applicant Status	Sex	2010	2011	2012	2013	2014
Placed	Men	4%	0%	-1%	0%	-0%
	Women	2%	-3%	-1%	0%	3%
	All	3%	-1%	-1%	0%	2%

#### S.45 Placed 18 year old applicants from Scotland by sex: 4 days after A level results day

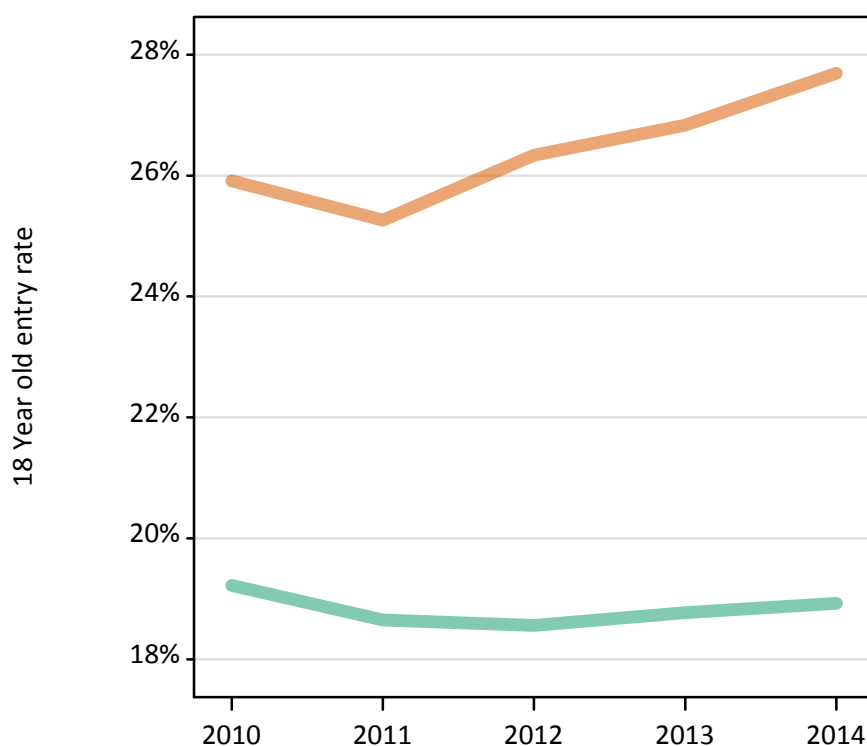
Placed 18 year old applicants: absolute change relative to 2013 cycle totals

Applicant Status	Sex	2010	2011	2012	2013	2014
Placed	Men	250	20	-70	0	-10
	Women	180	-220	-50	0	260
	All	430	-200	-120	0	250

#### S.46 Placed 18 year old applicants from Scotland by sex: 4 days after A level results day

Placed 18 year old applicants: entry rate

Men  
Women



#### S.47 Placed 18 year old applicants from Scotland by sex: 4 days after A level results day

Placed 18 year old applicants: entry rate

Applicant Status	Sex	2010	2011	2012	2013	2014
Placed	Men	19.2%	18.7%	18.6%	18.8%	18.9%
	Women	25.9%	25.3%	26.3%	26.8%	27.7%
	All	22.5%	21.9%	22.3%	22.7%	23.2%

#### S.48 Placed 18 year old applicants from Scotland by sex: 4 days after A level results day

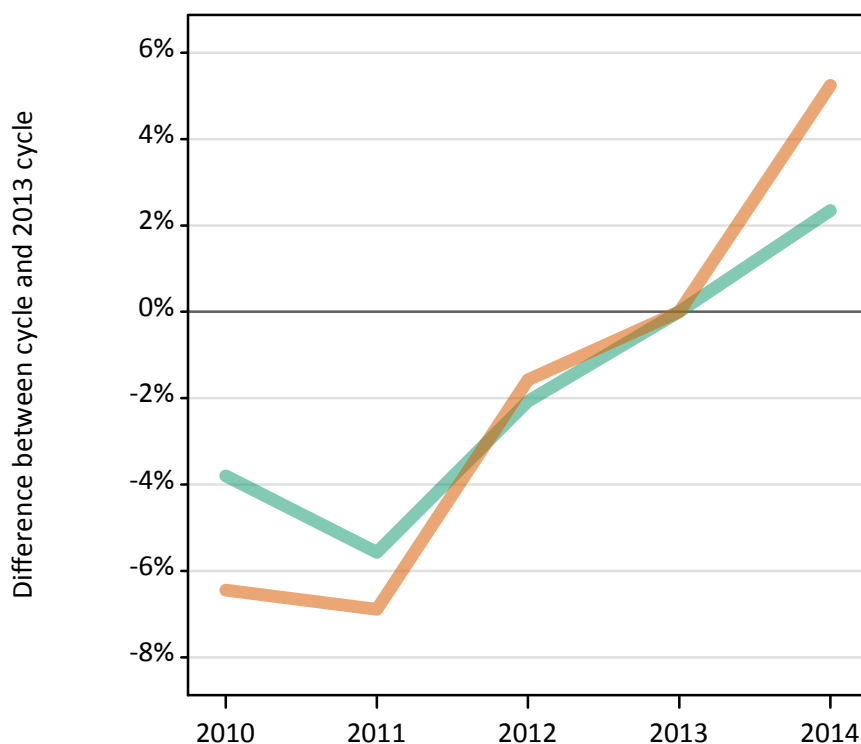
Placed 18 year old applicants: entry rate (indexed to 100 = Men)

Applicant Status	Sex	2010	2011	2012	2013	2014
Placed	Men	100	100	100	100	100
	Women	135	135	142	143	146

#### S.49 Placed applicants from Wales by sex: 4 days after A level results day

Placed applicants: change relative to 2013 cycle totals

Men  
Women



#### S.50 Placed applicants from Wales by sex: 4 days after A level results day

Applicant Status	Sex	2010	2011	2012	2013	2014
Placed	Men	7,010	6,880	7,130	7,290	7,460
	Women	9,030	8,980	9,500	9,650	10,160
	All	16,040	15,860	16,630	16,930	17,610

#### S.51 Placed applicants from Wales by sex: 4 days after A level results day

Placed applicants: change relative to 2013 cycle totals

Applicant Status	Sex	2010	2011	2012	2013	2014
Placed	Men	-4%	-6%	-2%	0%	2%
	Women	-6%	-7%	-2%	0%	5%
	All	-5%	-6%	-2%	0%	4%

#### S.52 Placed applicants from Wales by sex: 4 days after A level results day

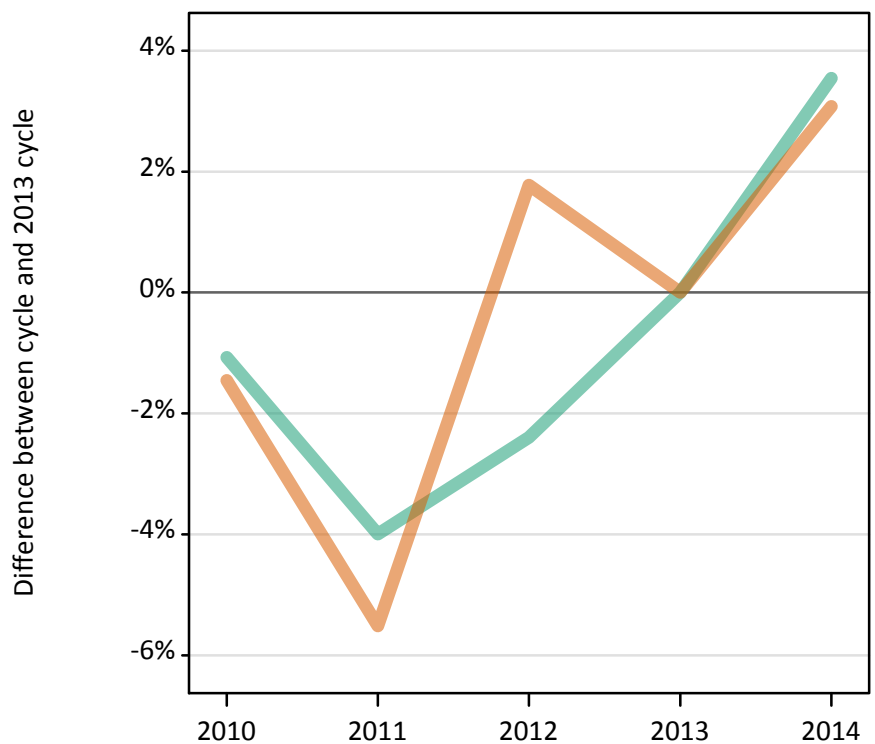
Placed applicants: absolute change relative to 2013 cycle totals

Applicant Status	Sex	2010	2011	2012	2013	2014
Placed	Men	-280	-410	-150	0	170
	Women	-620	-670	-150	0	510
	All	-900	-1,070	-300	0	680

### S.53 Placed 18 year old applicants from Wales by sex: 4 days after A level results day

Placed 18 year old applicants: change relative to 2013 cycle totals

Men  
Women



### S.54 Placed 18 year old applicants from Wales by sex: 4 days after A level results day

Applicant Status	Sex	2010	2011	2012	2013	2014
Placed	Men	3,960	3,850	3,910	4,010	4,150
	Women	5,220	5,000	5,390	5,290	5,460
	All	9,180	8,850	9,300	9,300	9,610

### S.55 Placed 18 year old applicants from Wales by sex: 4 days after A level results day

Placed 18 year old applicants: change relative to 2013 cycle totals

Applicant Status	Sex	2010	2011	2012	2013	2014
Placed	Men	-1%	-4%	-2%	0%	4%
	Women	-1%	-6%	2%	0%	3%
	All	-1%	-5%	-0%	0%	3%

### S.56 Placed 18 year old applicants from Wales by sex: 4 days after A level results day

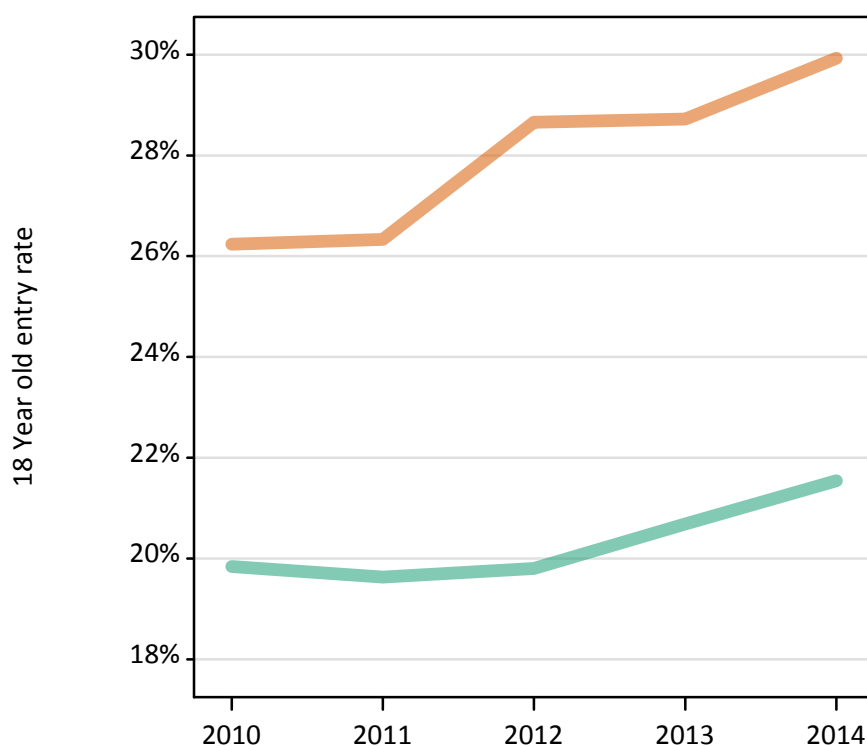
Placed 18 year old applicants: absolute change relative to 2013 cycle totals

Applicant Status	Sex	2010	2011	2012	2013	2014
Placed	Men	-40	-160	-100	0	140
	Women	-80	-290	90	0	160
	All	-120	-450	0	0	310

### S.57 Placed 18 year old applicants from Wales by sex: 4 days after A level results day

Placed 18 year old applicants: entry rate

Men  
Women



### S.58 Placed 18 year old applicants from Wales by sex: 4 days after A level results day

Placed 18 year old applicants: entry rate

Applicant Status	Sex	2010	2011	2012	2013	2014
Placed	Men	19.8%	19.6%	19.8%	20.7%	21.5%
	Women	26.2%	26.3%	28.7%	28.7%	29.9%
	All	23.0%	22.9%	24.1%	24.6%	25.6%

### S.59 Placed 18 year old applicants from Wales by sex: 4 days after A level results day

Placed 18 year old applicants: entry rate (indexed to 100 = Men)

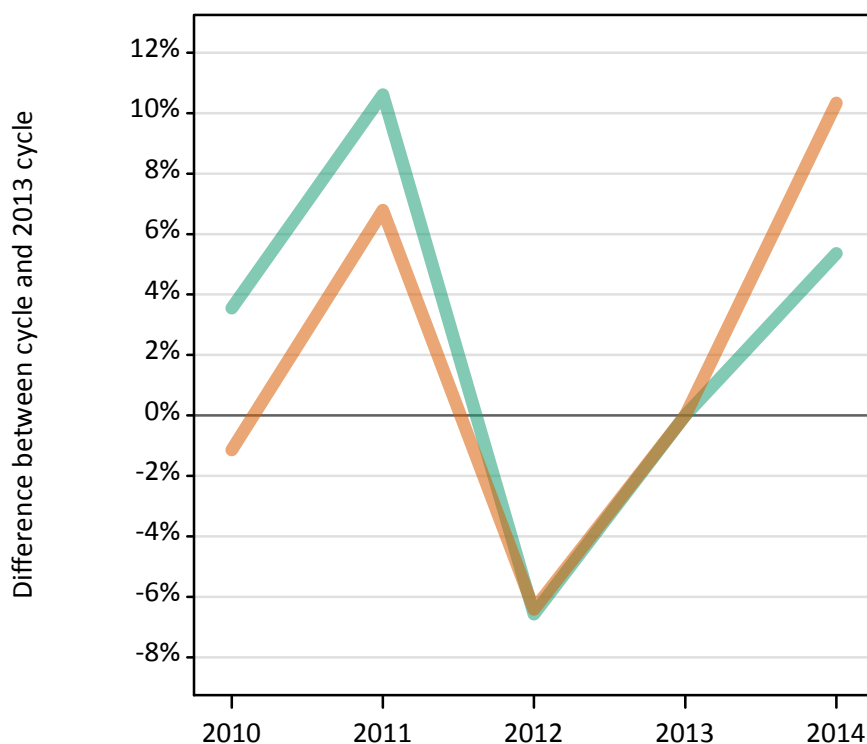
Applicant Status	Sex	2010	2011	2012	2013	2014
Placed	Men	100	100	100	100	100
	Women	132	134	145	139	139



### S.60 Placed applicants from the EU (excluding the UK) by sex: 4 days after A level results day

Placed applicants: change relative to 2013 cycle totals

Men  
Women



### S.61 Placed applicants from the EU (excluding the UK) by sex: 4 days after A level results day

Applicant Status	Sex	2010	2011	2012	2013	2014
Placed	Men	9,720	10,380	8,770	9,390	9,890
	Women	11,820	12,770	11,190	11,960	13,190
	All	21,540	23,150	19,960	21,340	23,080

### S.62 Placed applicants from the EU (excluding the UK) by sex: 4 days after A level results day

Placed applicants: change relative to 2013 cycle totals

Applicant Status	Sex	2010	2011	2012	2013	2014
Placed	Men	4%	11%	-7%	0%	5%
	Women	-1%	7%	-6%	0%	10%
	All	1%	8%	-6%	0%	8%

### S.63 Placed applicants from the EU (excluding the UK) by sex: 4 days after A level results day

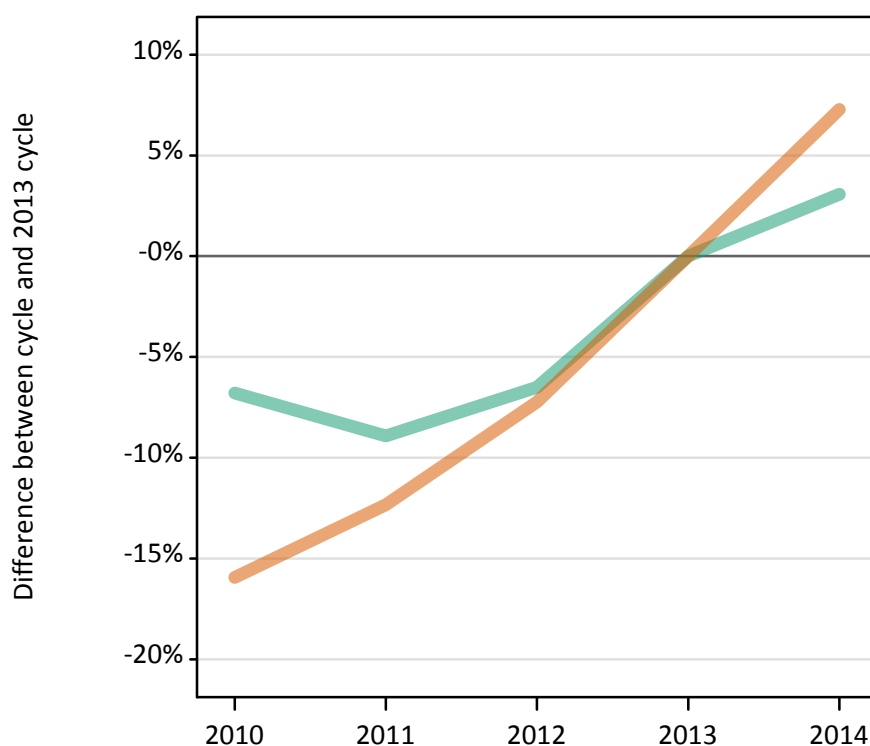
Placed applicants: absolute change relative to 2013 cycle totals

Applicant Status	Sex	2010	2011	2012	2013	2014
Placed	Men	330	1,000	-620	0	500
	Women	-140	810	-770	0	1,240
	All	200	1,810	-1,380	0	1,740

### S.64 Placed applicants from overseas (not EU) by sex: 4 days after A level results day

Placed applicants: change relative to 2013 cycle totals

Men  
Women



### S.65 Placed applicants from overseas (not EU) by sex: 4 days after A level results day

Applicant Status	Sex	2010	2011	2012	2013	2014
Placed	Men	12,470	12,180	12,500	13,380	13,790
	Women	12,590	13,130	13,890	14,970	16,060
	All	25,050	25,310	26,390	28,350	29,850

### S.66 Placed applicants from overseas (not EU) by sex: 4 days after A level results day

Placed applicants: change relative to 2013 cycle totals

Applicant Status	Sex	2010	2011	2012	2013	2014
Placed	Men	-7%	-9%	-7%	0%	3%
	Women	-16%	-12%	-7%	0%	7%
	All	-12%	-11%	-7%	0%	5%

### S.67 Placed applicants from overseas (not EU) by sex: 4 days after A level results day

Placed applicants: absolute change relative to 2013 cycle totals

Applicant Status	Sex	2010	2011	2012	2013	2014
Placed	Men	-910	-1,190	-870	0	410
	Women	-2,390	-1,850	-1,080	0	1,090
	All	-3,300	-3,040	-1,950	0	1,500