

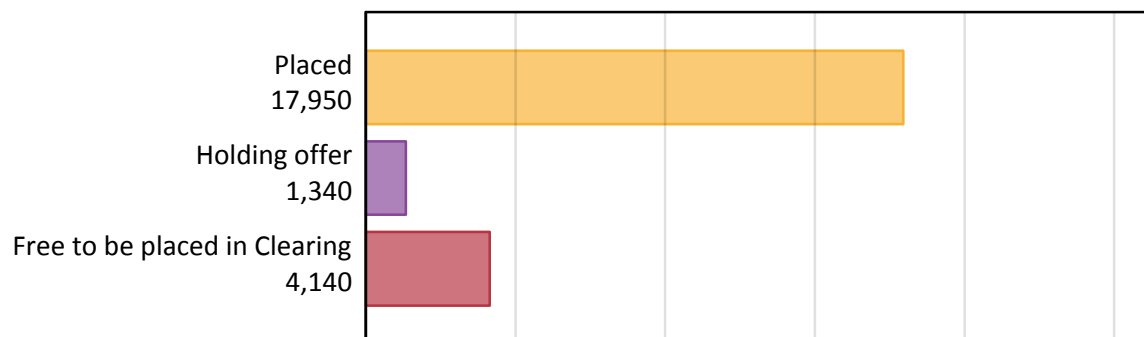
# Daily Clearing Analysis: Overview

Analysis at 00:05 on Tuesday 19 August 2014 (5 days after A level results day)

## A.1 Applicants by type and status from Wales, 2014 cycle

Applicant type	Status	2014
Main scheme	Placed (Clearing)	920
	Placed (Adjustment)	30
	Placed (Firm)	15,370
	Placed (Insurance)	970
	Placed (Other)	460
	Holding offer	1,340
	Free to be placed in Clearing	4,140
Direct to Clearing	Placed (Direct to Clearing)	200
	Other (Direct to Clearing)	290
All applicants	Placed	17,950

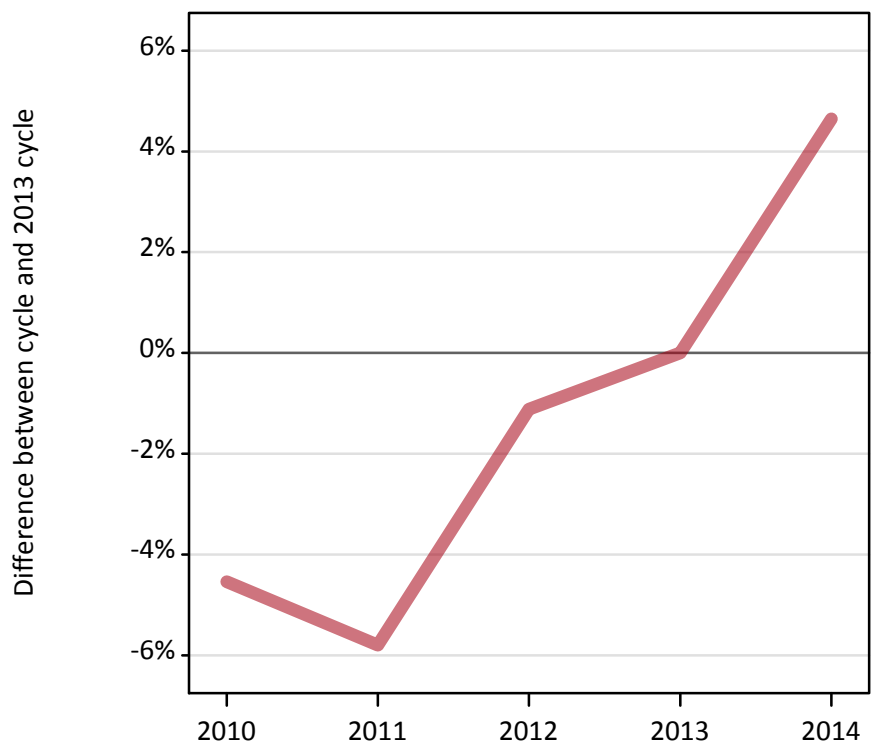
## A.2 Summary of applicants who are placed, holding offers or free to be placed in Clearing ( Wales )



### A.3 All placed applicants from Wales: 5 days after A level results day

All placed applicants: difference between cycle and 2013 cycle

Placed



### A.4 All placed applicants from Wales: 5 days after A level results day

All placed applicants: applicants at 5 days after A level results day

Applicant type	Status	2010	2011	2012	2013	2014
All applicants	Placed	16,370	16,160	16,960	17,150	17,950

### A.5 All placed applicants from Wales: 5 days after A level results day

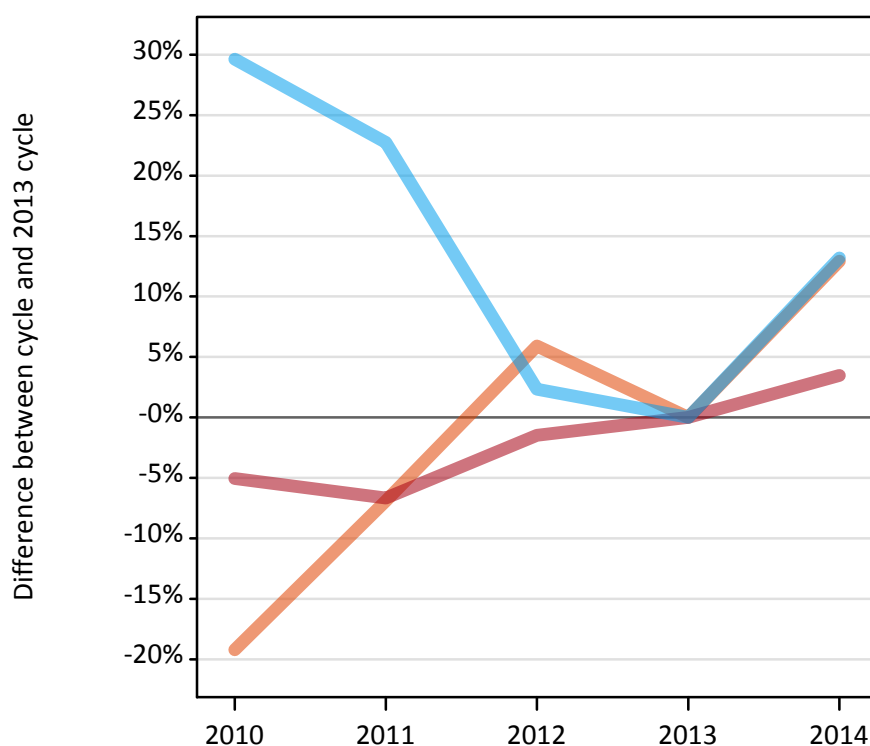
All placed applicants: difference between cycle and 2013 cycle

Applicant type	Status	2010	2011	2012	2013	2014
All applicants	Placed	-5%	-6%	-1%	0%	5%

## A.6 Placed main scheme applicants from Wales: 5 days after A level results day

Selected placed routes: difference between cycle and 2013 cycle

Placed (Clearing)  
Placed (Firm)  
Placed (Insurance)



## A.7 Placed main scheme applicants from Wales: 5 days after A level results day

All Main scheme placed routes (excluding Adjustment): applicants at 5 days after A level results day

Applicant type	Status	2010	2011	2012	2013	2014
Main scheme	Placed (Clearing)	660	760	860	810	920
	Placed (Firm)	14,110	13,870	14,640	14,860	15,370
	Placed (Insurance)	1,110	1,050	880	860	970
	Placed (Other)	370	370	360	400	460

## A.8 Placed main scheme applicants from Wales: 5 days after A level results day

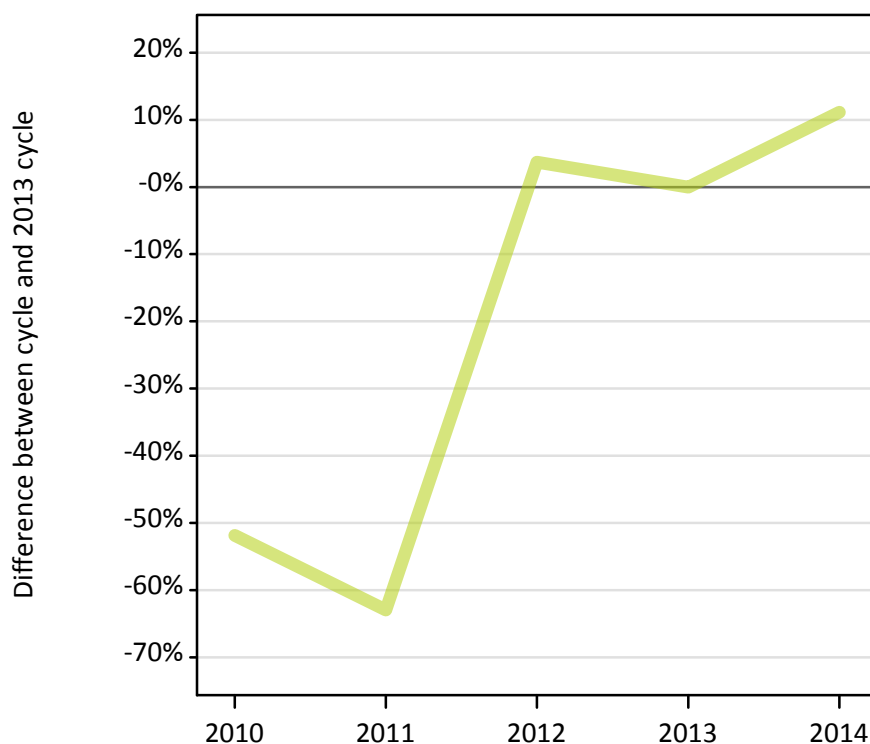
Selected placed routes: difference between cycle and 2013 cycle

Applicant type	Status	2010	2011	2012	2013	2014
Main scheme	Placed (Clearing)	-19%	-7%	6%	0%	13%
	Placed (Firm)	-5%	-7%	-1%	0%	3%
	Placed (Insurance)	30%	23%	2%	0%	13%

### A.9 Main scheme applicants placed through adjustment: 5 days after A level results day

Placed through adjustment: difference between cycle and 2013 cycle

Placed (Adjustment)



### A.10 Main scheme applicants placed through adjustment: 5 days after A level results day

Placed through adjustment: applicants at 5 days after A level results day

Applicant type	Status	2010	2011	2012	2013	2014
Main scheme	Placed (Adjustment)	10	10	30	30	30

### A.11 Main scheme applicants placed through adjustment: 5 days after A level results day

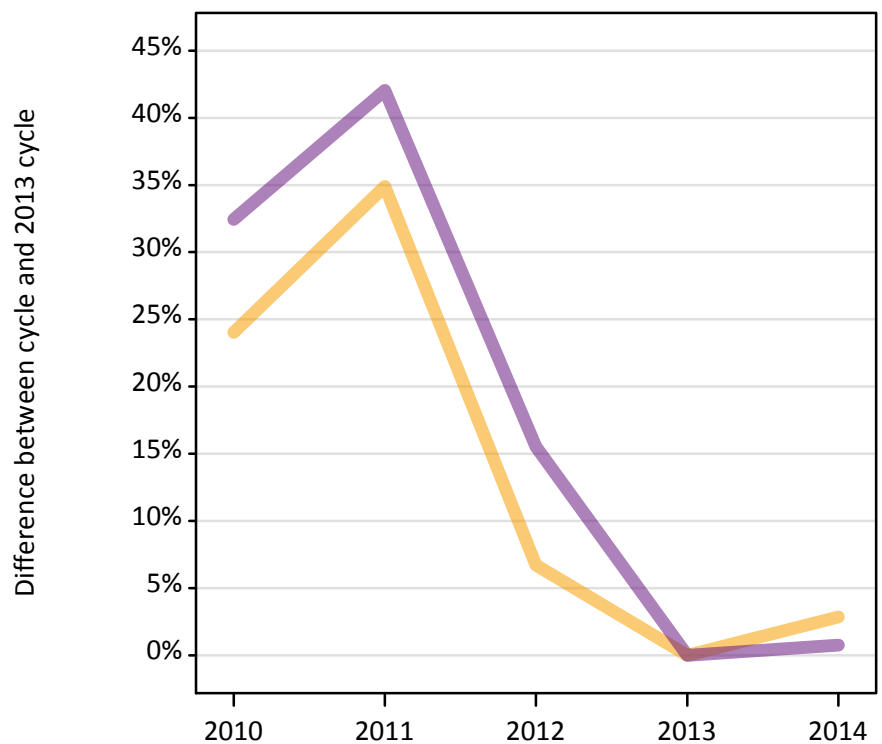
Placed through adjustment: difference between cycle and 2013 cycle

Applicant type	Status	2010	2011	2012	2013	2014
Main scheme	Placed (Adjustment)	-52%	-63%	4%	0%	11%

### A.12 Main scheme applicants not currently placed from Wales: 5 days after A level results day

Applicants in unplaced states: difference between cycle and 2013 cycle

— Holding offer  
— Free to be placed in Clearing



### A.13 Main scheme applicants not currently placed from Wales: 5 days after A level results day

Applicants in unplaced states: applicants at 5 days after A level results day

Applicant type	Status	2010	2011	2012	2013	2014
Main scheme	Holding offer	1,610	1,750	1,390	1,300	1,340
	Free to be placed in Clearing	5,440	5,840	4,750	4,110	4,140

### A.14 Main scheme applicants not currently placed from Wales: 5 days after A level results day

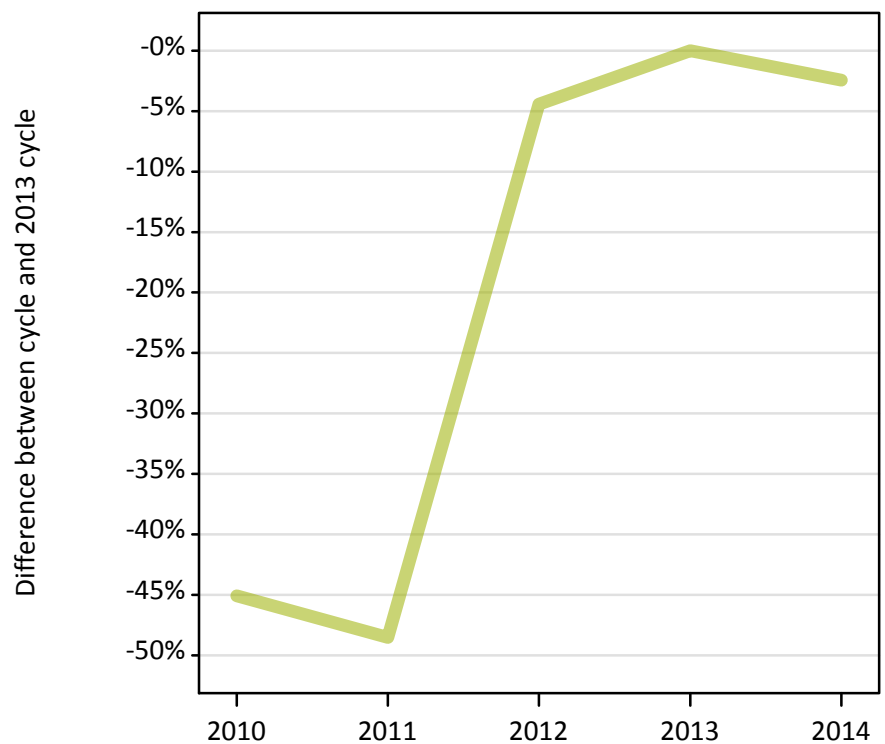
Applicants in unplaced states: difference between cycle and 2013 cycle

Applicant type	Status	2010	2011	2012	2013	2014
Main scheme	Holding offer	24%	35%	7%	0%	3%
	Free to be placed in Clearing	32%	42%	16%	0%	1%

### A.15 Direct to Clearing applicants from Wales: 5 days after A level results day

Placed (Direct to Clearing): difference between cycle and 2013 cycle

Placed (Direct to Clearing)



### A.16 Direct to Clearing applicants from Wales: 5 days after A level results day

Direct to Clearing 5 days after A level results day

Applicant type	Status	2010	2011	2012	2013	2014
Direct to Clearing	Placed (Direct to Clearing)	110	110	200	200	200
	Other (Direct to Clearing)	270	250	260	260	290

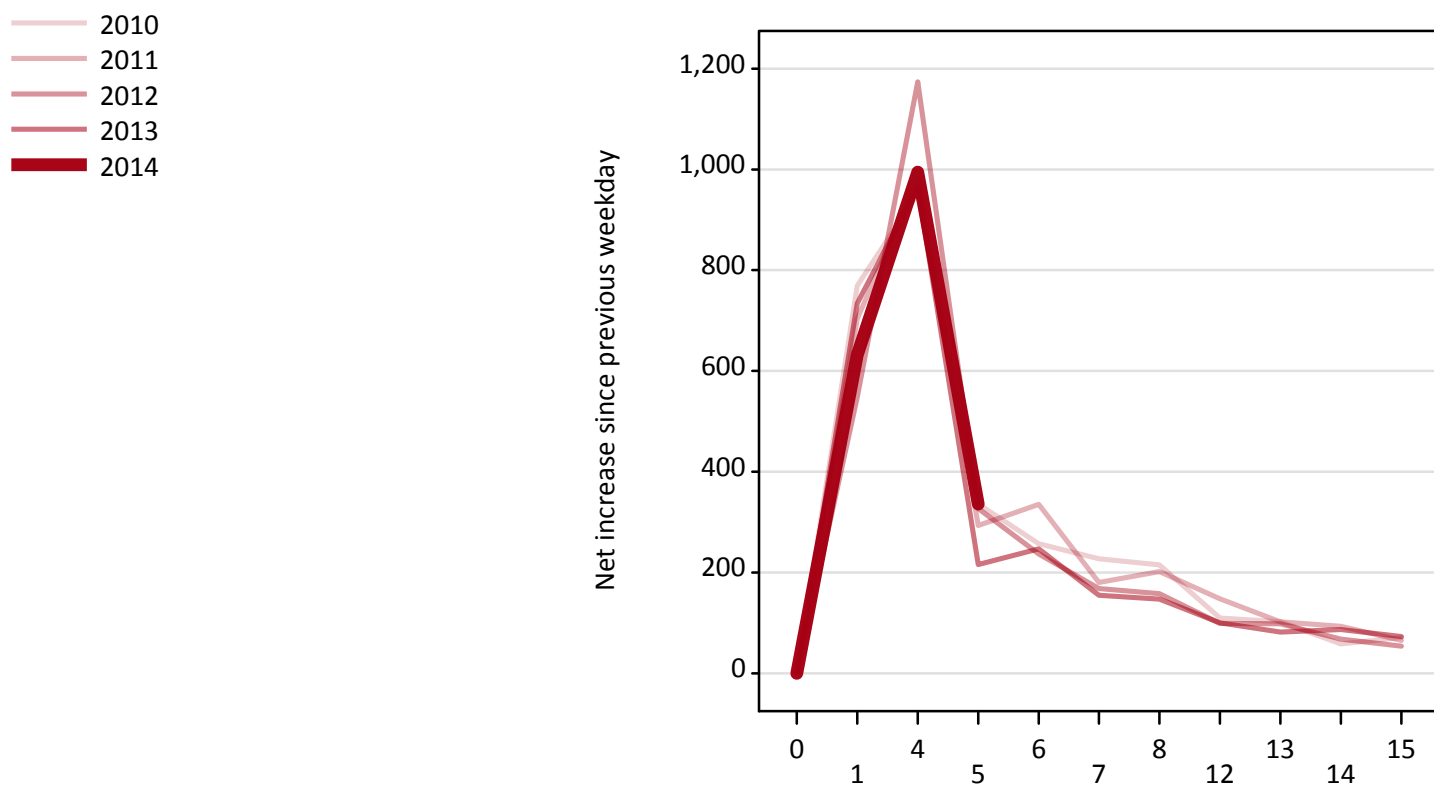
### A.17 Direct to Clearing applicants from Wales: 5 days after A level results day

Placed (Direct to Clearing): difference between cycle and 2013 cycle

Applicant type	Status	2010	2011	2012	2013	2014
Direct to Clearing	Placed (Direct to Clearing)	-45%	-49%	-4%	0%	-2%

### A.18 All Placed: Daily net change (from Wales)

Net increase since previous weekday (2014 cycle up to 5 days after A level results day)



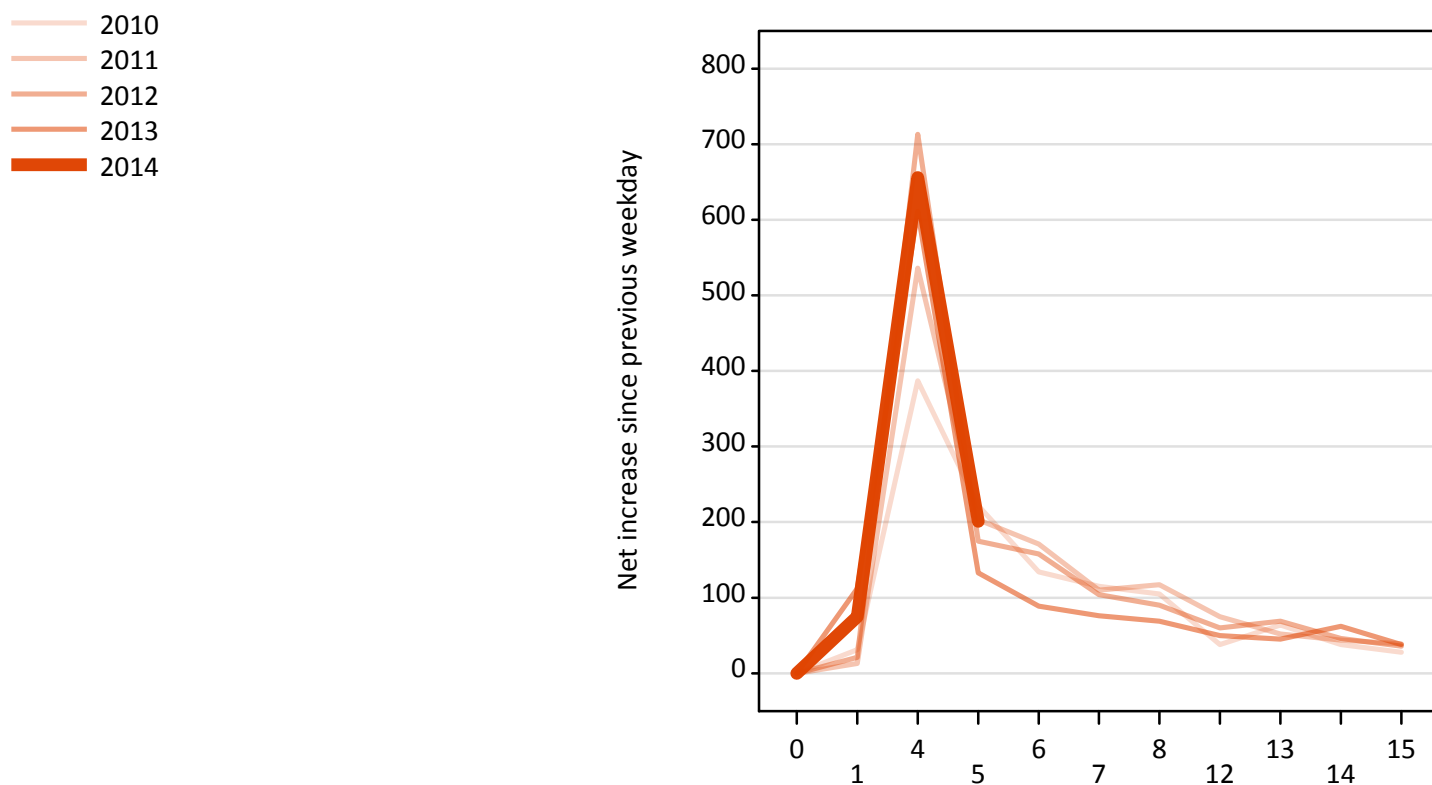
### A.19 All Placed: Daily net change (from Wales)

Net increase since previous weekday (2014 cycle up to 5 days after A level results day)

Applicant status, days since A level results day		2010	2011	2012	2013	2014
All Placed	0	0	0	0	0	0
	1	770	700	550	730	630
	4	950	980	1,170	970	1,000
	5	340	290	330	220	340
	6	260	340	240	250	
	7	230	180	170	160	
	8	220	200	160	150	
	12	110	150	100	100	
	13	100	100	100	80	
	14	60	90	70	90	
	15	70	70	50	70	

### A.20 Placed through Clearing only: Daily net change (from Wales)

Net increase since previous weekday (2014 cycle up to 5 days after A level results day)



### A.21 Placed through Clearing only: Daily net change (from Wales)

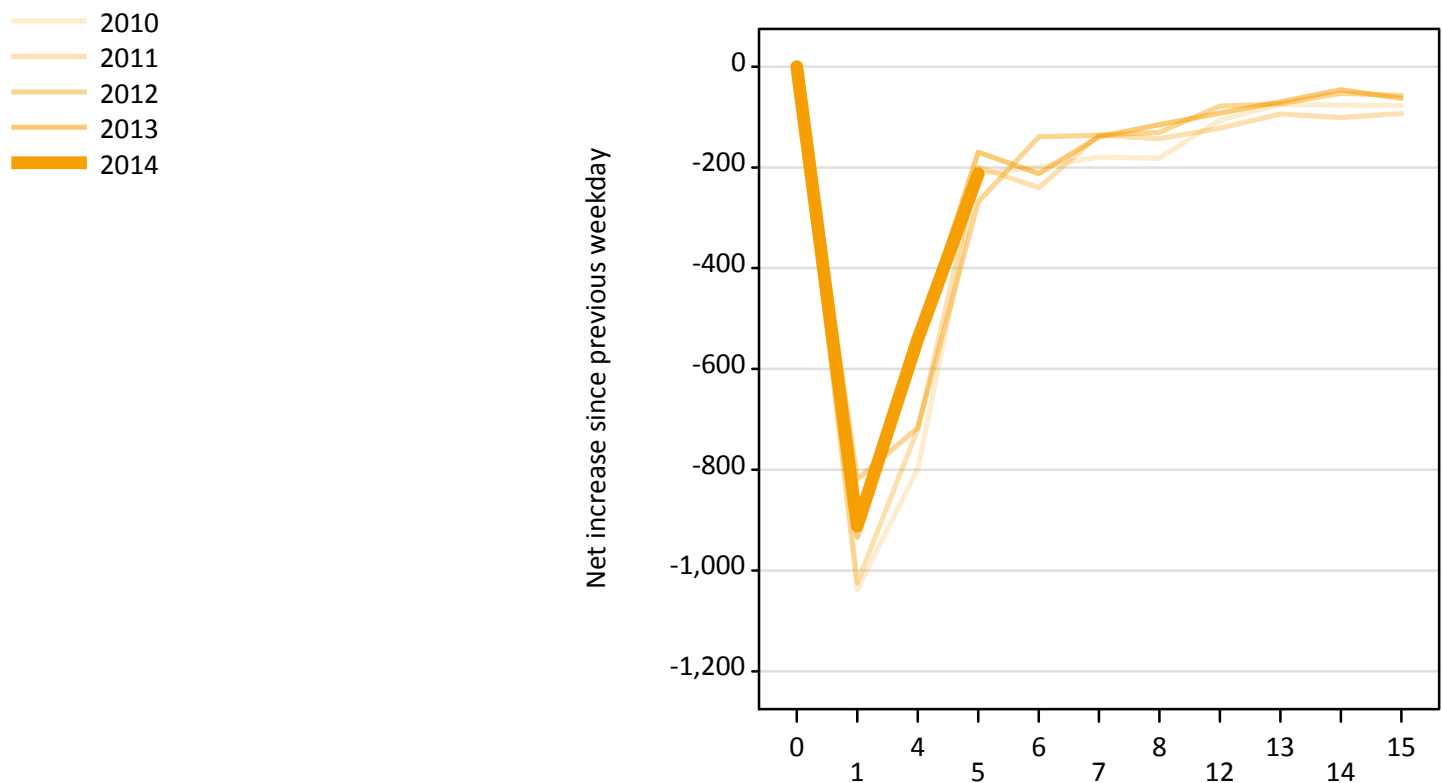
Net increase since previous weekday (2014 cycle up to 5 days after A level results day)

Applicant status, days since A level results day		2010	2011	2012	2013	2014
Placed through Clearing only	0	0	0	0	0	0
	1	30	10	20	110	80
	4	390	540	710	610	660
	5	220	200	180	130	200
	6	130	170	160	90	
	7	120	110	100	80	
	8	110	120	90	70	
	12	40	80	60	50	
	13	60	50	70	50	
	14	40	40	50	60	
	15	30	40	40	40	



### A.22 Holding Offer: Daily net change (from Wales)

Net increase since previous weekday (2014 cycle up to 5 days after A level results day)



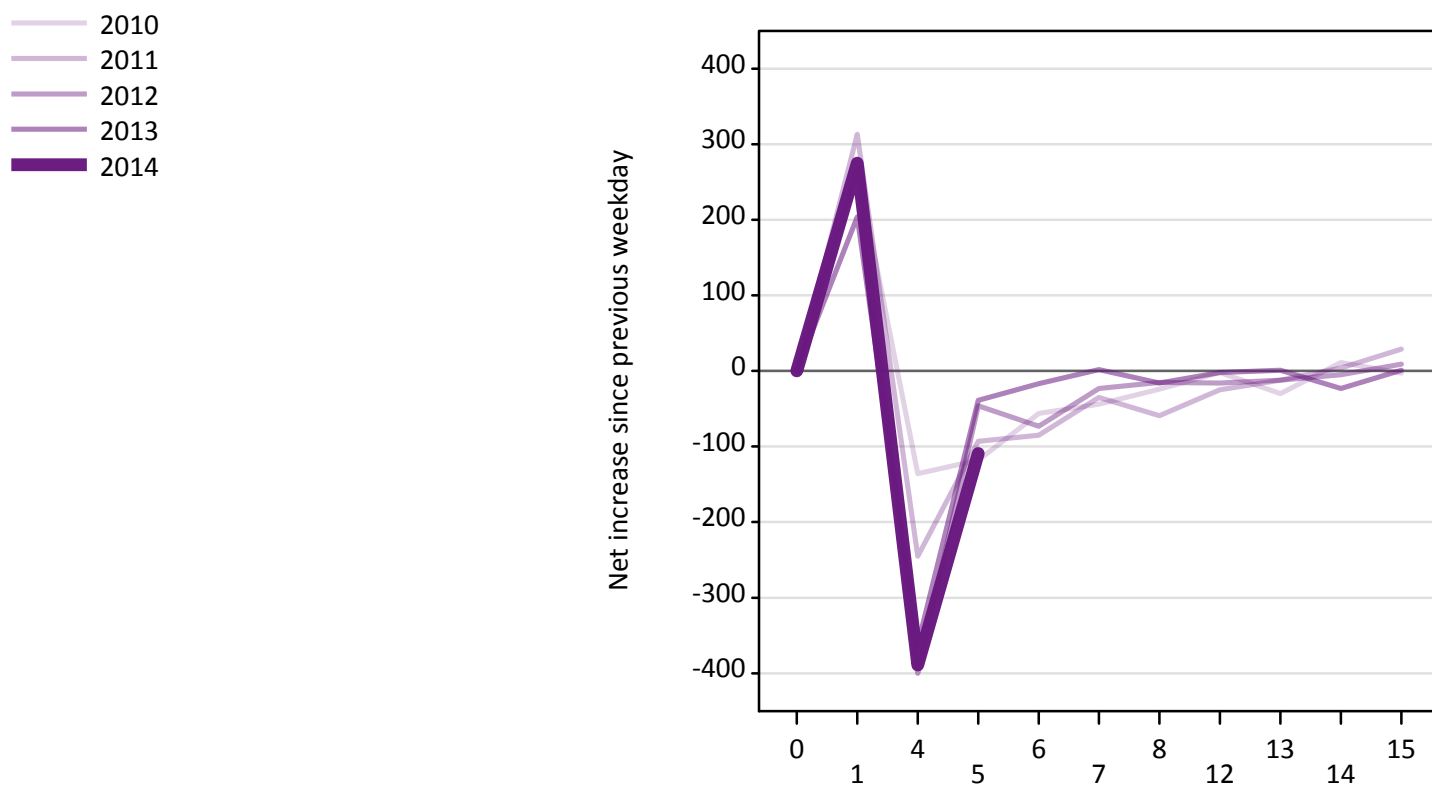
### A.23 Holding Offer: Daily net change (from Wales)

Net increase since previous weekday (2014 cycle up to 5 days after A level results day)

Applicant status, days since A level results day		2010	2011	2012	2013	2014
Holding Offer	0	0	0	0	0	0
	1	-1,040	-1,020	-820	-930	-910
	4	-800	-720	-720	-540	-540
	5	-210	-200	-270	-170	-210
	6	-200	-240	-140	-210	
	7	-180	-140	-140	-140	
	8	-180	-140	-130	-120	
	12	-110	-120	-80	-90	
	13	-80	-90	-70	-70	
	14	-80	-100	-50	-50	
	15	-80	-90	-60	-60	

#### A.24 Free to be placed in Clearing: Daily net change (from Wales)

Net increase since previous weekday (2014 cycle up to 5 days after A level results day)



#### A.25 Free to be placed in Clearing: Daily net change (from Wales)

Net increase since previous weekday (2014 cycle up to 5 days after A level results day)

Applicant status, days since A level results day		2010	2011	2012	2013	2014
Free to be placed in Clearing	0	0	0	0	0	0
	1	270	310	270	200	280
	4	-140	-250	-400	-360	-390
	5	-120	-90	-50	-40	-110
	6	-60	-90	-70	-20	
	7	-40	-40	-20	0	
	8	-20	-60	-20	-20	
	12	0	-30	-20	0	
	13	-30	-10	-10	0	
	14	10	0	-10	-20	
	15	0	30	10	0	