

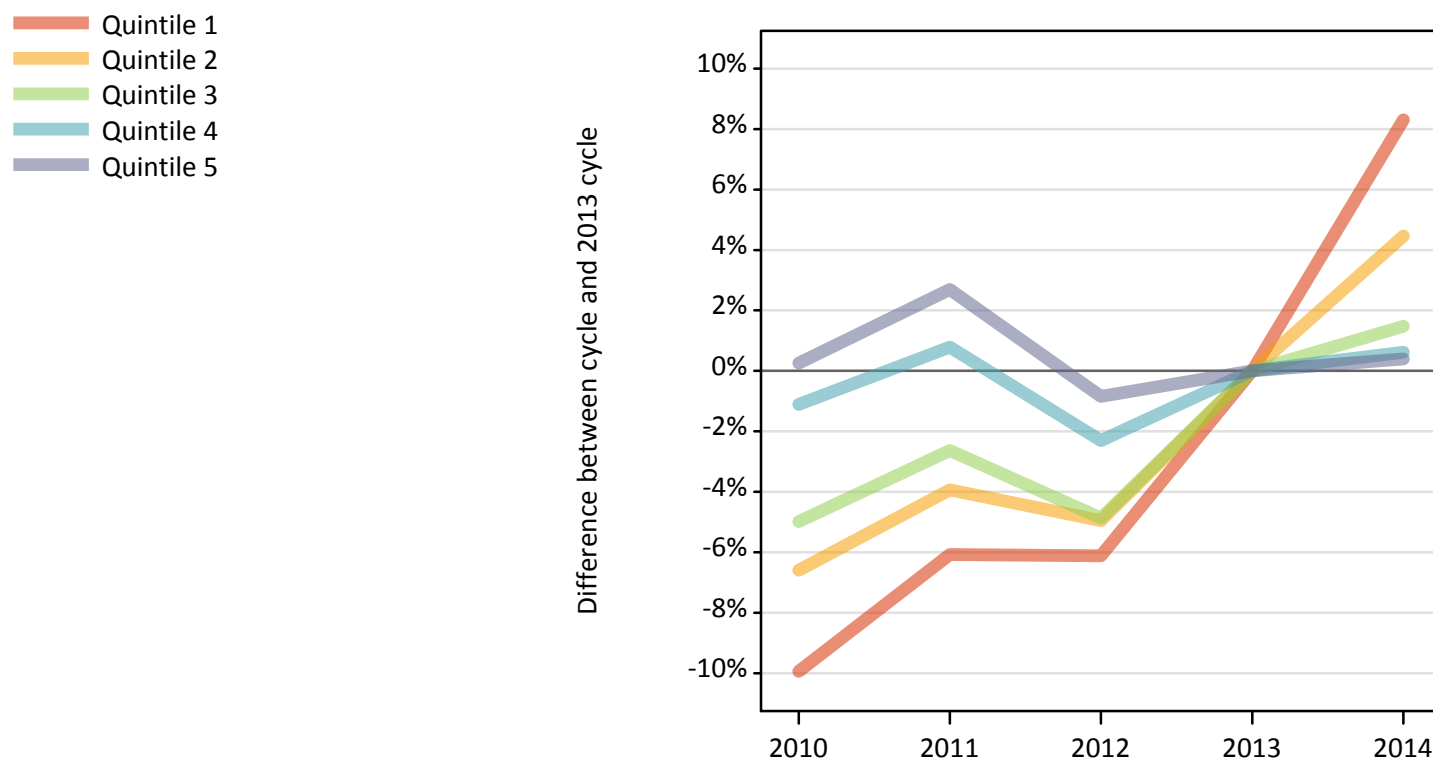
Daily Clearing Analysis: POLAR2

UCAS

Analysis at 00:05 on Tuesday 19 August 2014 (5 days after A level results day)

P.1 Placed 18 year old applicants from England by POLAR2 quintile: 5 days after A level results day

Placed 18 year old applicants: change relative to 2013 cycle totals



P.2 Placed 18 year old applicants from England by POLAR2 quintile: 5 days after A level results day

Applicant Status	POLAR2	2010	2011	2012	2013	2014
Placed	Quintile 1	17,530	18,280	18,270	19,460	21,080
	Quintile 2	25,650	26,380	26,100	27,460	28,680
	Quintile 3	32,070	32,860	32,110	33,750	34,250
	Quintile 4	40,840	41,620	40,350	41,300	41,550
	Quintile 5	51,420	52,670	50,850	51,280	51,490

P.3 Placed 18 year old applicants from England by POLAR2 quintile: 5 days after A level results day

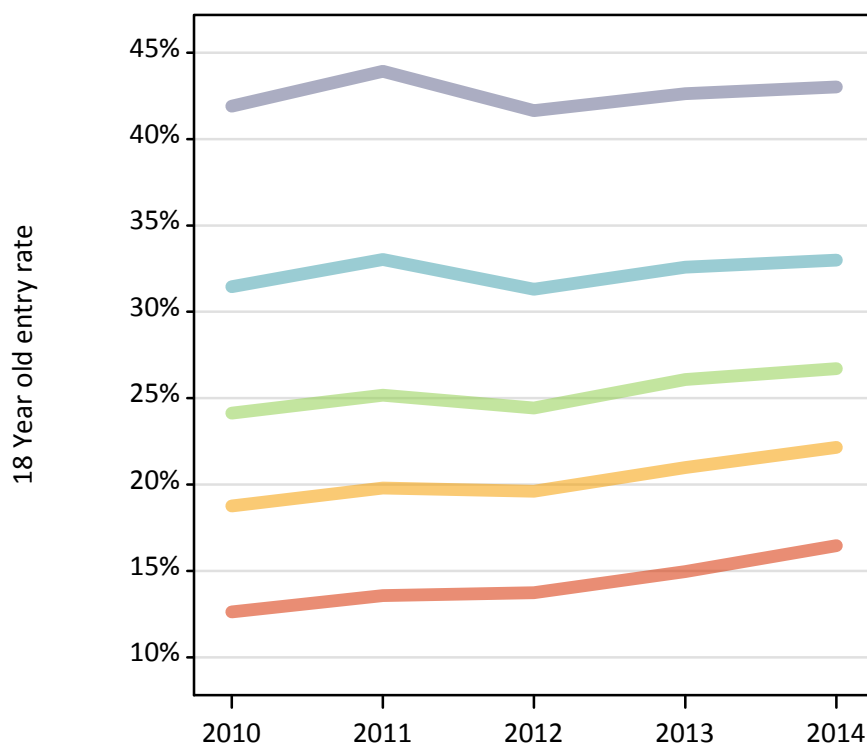
Placed 18 year old applicants: change relative to 2013 cycle totals

Applicant Status	POLAR2	2010	2011	2012	2013	2014
Placed	Quintile 1	-10%	-6%	-6%	0%	8%
	Quintile 2	-7%	-4%	-5%	0%	4%
	Quintile 3	-5%	-3%	-5%	0%	1%
	Quintile 4	-1%	1%	-2%	0%	1%
	Quintile 5	0%	3%	-1%	0%	0%

P.4 Placed 18 year old applicants from England by POLAR2 quintile: 5 days after A level results day

Placed 18 year old applicants: entry rate

— Quintile 1
— Quintile 2
— Quintile 3
— Quintile 4
— Quintile 5



P.5 Placed 18 year old applicants from England by POLAR2 quintile: 5 days after A level results day

Placed 18 year old applicants: entry rate

Applicant Status		POLAR2	2010	2011	2012	2013	2014
Placed	Quintile 1		12.6%	13.6%	13.7%	15.0%	16.5%
	Quintile 2		18.8%	19.8%	19.6%	21.0%	22.1%
	Quintile 3		24.1%	25.2%	24.4%	26.1%	26.7%
	Quintile 4		31.5%	33.0%	31.3%	32.6%	33.0%
	Quintile 5		41.9%	43.9%	41.6%	42.6%	43.0%

P.6 Placed 18 year old applicants from England by POLAR2 quintile: 5 days after A level results day

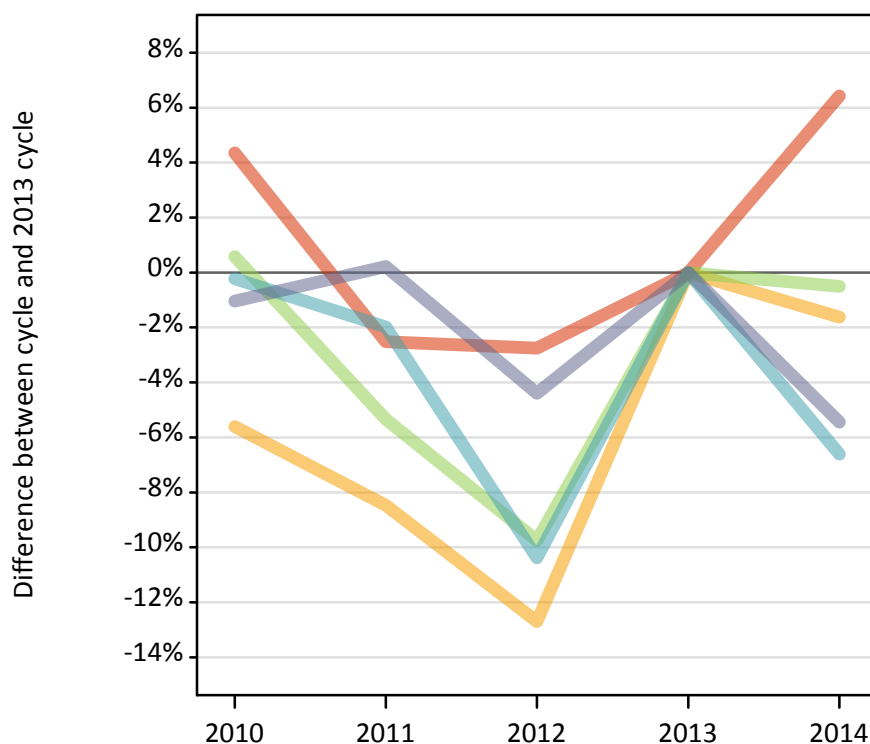
Placed 18 year old applicants: entry rate (indexed to 100 = Quintile 1)

Applicant Status		POLAR2	2010	2011	2012	2013	2014
Placed	Quintile 1		100	100	100	100	100
	Quintile 2		149	146	143	140	135
	Quintile 3		191	185	178	174	162
	Quintile 4		249	243	228	218	200
	Quintile 5		332	324	303	285	261

P.7 Placed 18 year old applicants from Northern Ireland by POLAR2 quintile: 5 days after A level results day

Placed 18 year old applicants: change relative to 2013 cycle totals

Quintile 1
 Quintile 2
 Quintile 3
 Quintile 4
 Quintile 5



P.8 Placed 18 year old applicants from Northern Ireland by POLAR2 quintile: 5 days after A level results day

Applicant Status	POLAR2	2010	2011	2012	2013	2014
Placed	Quintile 1	460	430	420	440	460
	Quintile 2	760	740	700	800	790
	Quintile 3	1,390	1,310	1,250	1,390	1,380
	Quintile 4	2,720	2,670	2,440	2,730	2,550
	Quintile 5	2,660	2,690	2,570	2,690	2,540

P.9 Placed 18 year old applicants from Northern Ireland by POLAR2 quintile: 5 days after A level results day

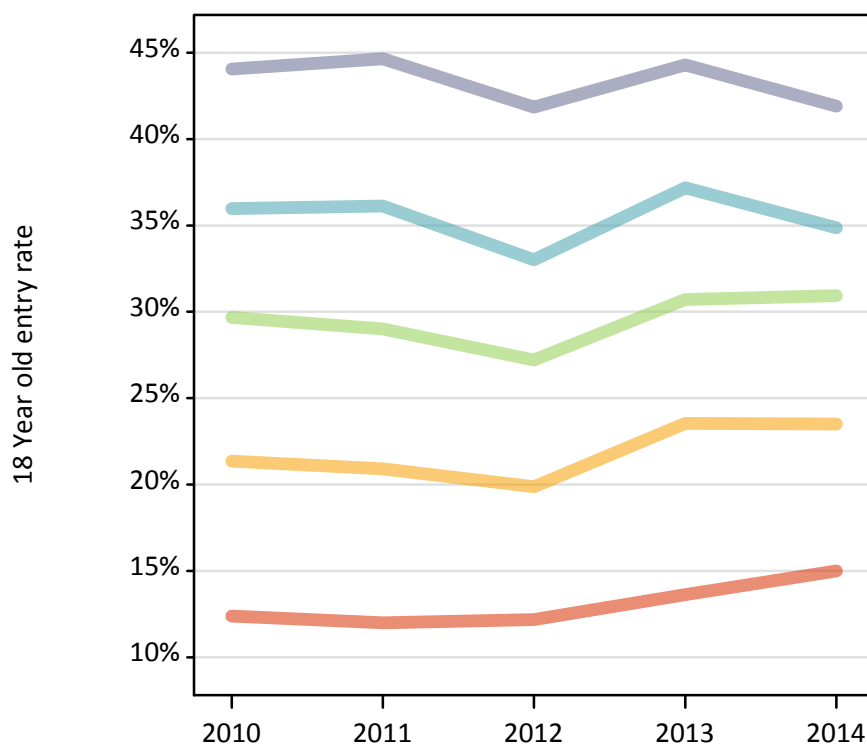
Placed 18 year old applicants: change relative to 2013 cycle totals

Applicant Status	POLAR2	2010	2011	2012	2013	2014
Placed	Quintile 1	4%	-3%	-3%	0%	6%
	Quintile 2	-6%	-8%	-13%	0%	-2%
	Quintile 3	1%	-5%	-10%	0%	-1%
	Quintile 4	-0%	-2%	-10%	0%	-7%
	Quintile 5	-1%	0%	-4%	0%	-5%

P.10 Placed 18 year old applicants from Northern Ireland by POLAR2 quintile: 5 days after A level results day

Placed 18 year old applicants: entry rate

Quintile 1
 Quintile 2
 Quintile 3
 Quintile 4
 Quintile 5



P.11 Placed 18 year old applicants from Northern Ireland by POLAR2 quintile: 5 days after A level results day

Placed 18 year old applicants: entry rate

Applicant Status	POLAR2	2010	2011	2012	2013	2014
Placed	Quintile 1	12.4%	12.0%	12.2%	13.6%	15.0%
	Quintile 2	21.4%	20.9%	19.9%	23.5%	23.5%
	Quintile 3	29.7%	29.0%	27.2%	30.7%	30.9%
	Quintile 4	36.0%	36.1%	33.0%	37.2%	34.9%
	Quintile 5	44.0%	44.6%	41.8%	44.3%	41.9%

P.12 Placed 18 year old applicants from Northern Ireland by POLAR2 quintile: 5 days after A level results day

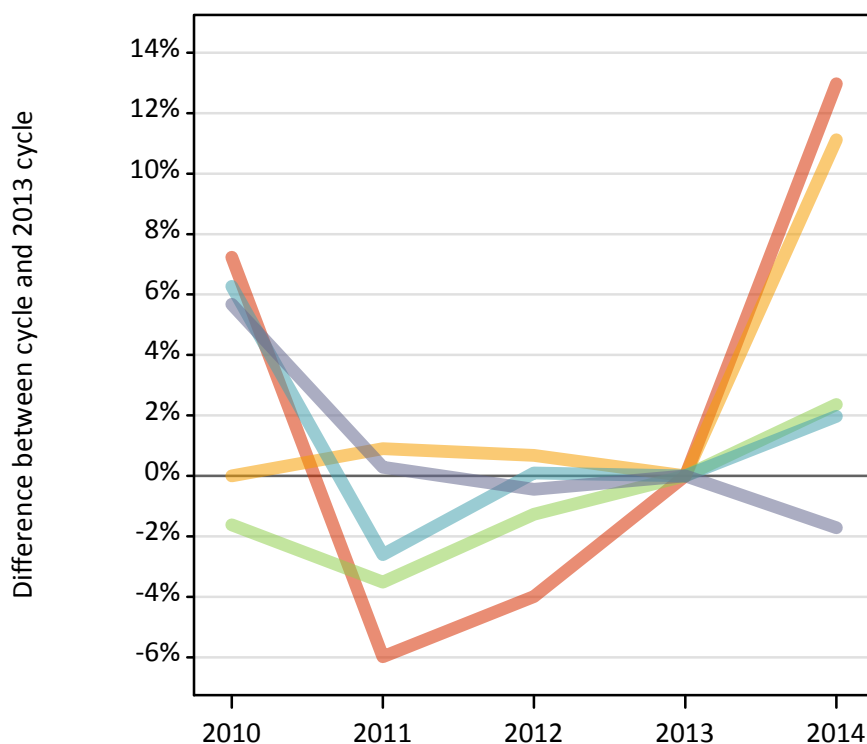
Placed 18 year old applicants: entry rate (indexed to 100 = Quintile 1)

Applicant Status	POLAR2	2010	2011	2012	2013	2014
Placed	Quintile 1	100	100	100	100	100
	Quintile 2	173	174	163	173	157
	Quintile 3	240	242	223	225	206
	Quintile 4	291	301	271	273	232
	Quintile 5	356	372	343	325	279

P.13 Placed 18 year old applicants from Scotland by POLAR2 quintile: 5 days after A level results day

Placed 18 year old applicants: change relative to 2013 cycle totals

Quintile 1
 Quintile 2
 Quintile 3
 Quintile 4
 Quintile 5



P.14 Placed 18 year old applicants from Scotland by POLAR2 quintile: 5 days after A level results day

Applicant Status	POLAR2	2010	2011	2012	2013	2014
Placed	Quintile 1	430	380	390	400	450
	Quintile 2	890	900	900	890	990
	Quintile 3	1,710	1,670	1,710	1,730	1,770
	Quintile 4	3,340	3,060	3,150	3,140	3,210
	Quintile 5	7,990	7,590	7,530	7,570	7,440

P.15 Placed 18 year old applicants from Scotland by POLAR2 quintile: 5 days after A level results day

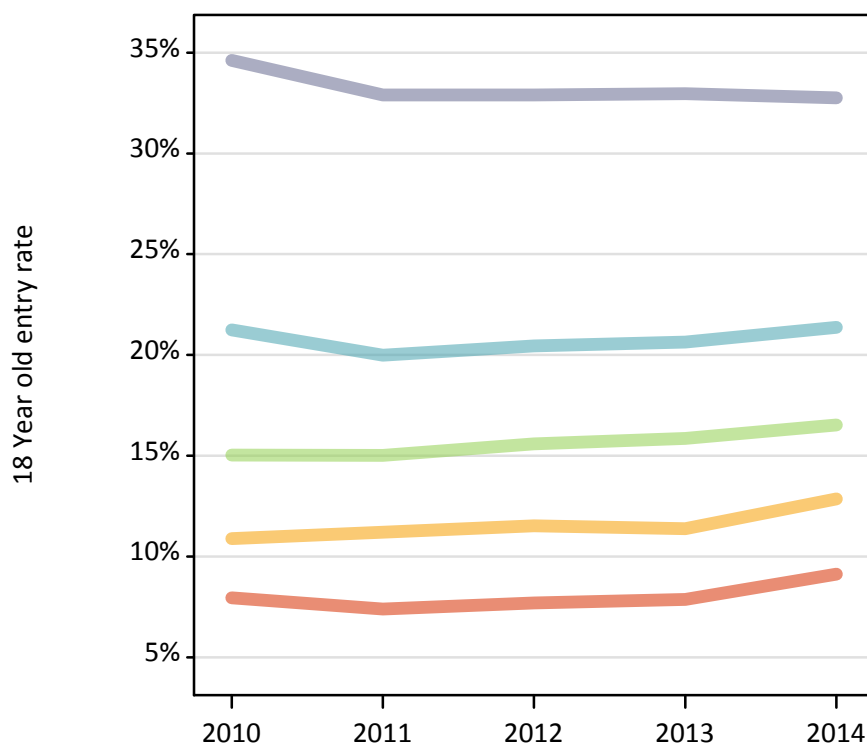
Placed 18 year old applicants: change relative to 2013 cycle totals

Applicant Status	POLAR2	2010	2011	2012	2013	2014
Placed	Quintile 1	7%	-6%	-4%	0%	13%
	Quintile 2	0%	1%	1%	0%	11%
	Quintile 3	-2%	-4%	-1%	0%	2%
	Quintile 4	6%	-3%	0%	0%	2%
	Quintile 5	6%	0%	-0%	0%	-2%

P.16 Placed 18 year old applicants from Scotland by POLAR2 quintile: 5 days after A level results day

Placed 18 year old applicants: entry rate

— Quintile 1
— Quintile 2
— Quintile 3
— Quintile 4
— Quintile 5



P.17 Placed 18 year old applicants from Scotland by POLAR2 quintile: 5 days after A level results day

Placed 18 year old applicants: entry rate

Applicant Status	POLAR2	2010	2011	2012	2013	2014
Placed	Quintile 1	7.9%	7.4%	7.7%	7.9%	9.1%
	Quintile 2	10.9%	11.2%	11.5%	11.4%	12.9%
	Quintile 3	15.0%	15.0%	15.6%	15.9%	16.5%
	Quintile 4	21.2%	20.0%	20.4%	20.6%	21.4%
	Quintile 5	34.6%	32.9%	32.9%	33.0%	32.8%

P.18 Placed 18 year old applicants from Scotland by POLAR2 quintile: 5 days after A level results day

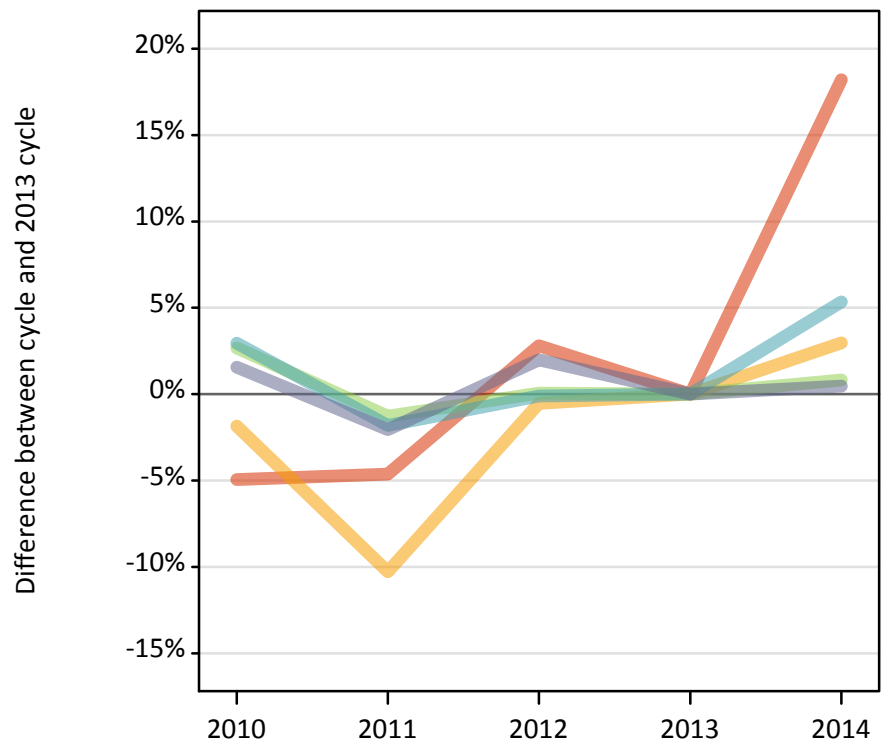
Placed 18 year old applicants: entry rate (indexed to 100 = Quintile 1)

Applicant Status	POLAR2	2010	2011	2012	2013	2014
Placed	Quintile 1	100	100	100	100	100
	Quintile 2	137	151	150	144	141
	Quintile 3	189	203	203	201	181
	Quintile 4	267	270	266	262	234
	Quintile 5	435	445	428	419	359

P.19 Placed 18 year old applicants from Wales by POLAR2 quintile: 5 days after A level results day

Placed 18 year old applicants: change relative to 2013 cycle totals

Quintile 1
 Quintile 2
 Quintile 3
 Quintile 4
 Quintile 5



P.20 Placed 18 year old applicants from Wales by POLAR2 quintile: 5 days after A level results day

Applicant Status	POLAR2	2010	2011	2012	2013	2014
Placed	Quintile 1	880	890	960	930	1,100
	Quintile 2	1,650	1,510	1,670	1,680	1,730
	Quintile 3	1,760	1,700	1,720	1,720	1,730
	Quintile 4	1,990	1,900	1,930	1,930	2,030
	Quintile 5	3,060	2,950	3,070	3,010	3,020

P.21 Placed 18 year old applicants from Wales by POLAR2 quintile: 5 days after A level results day

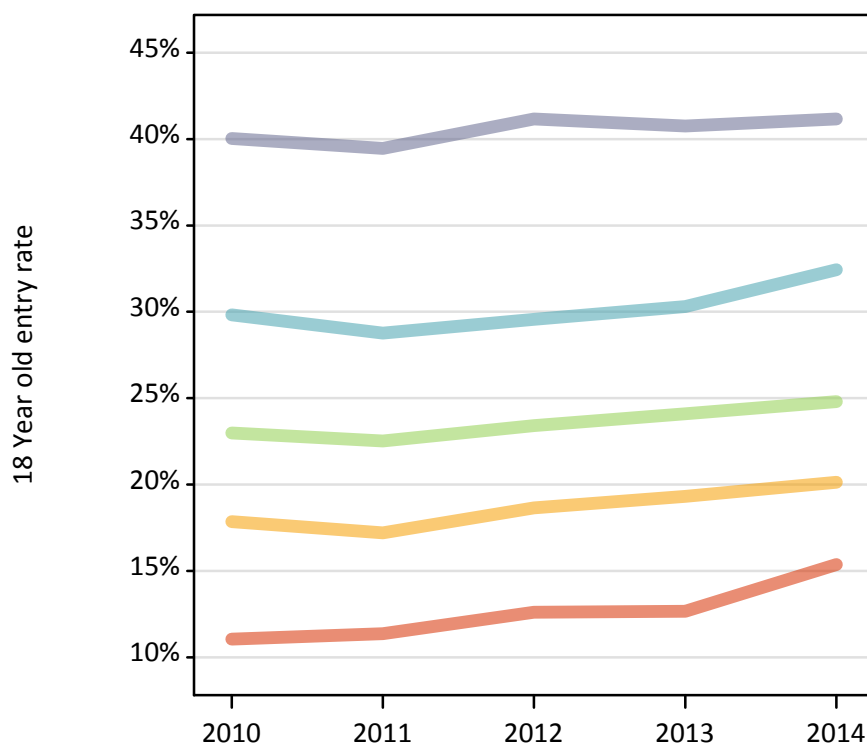
Placed 18 year old applicants: change relative to 2013 cycle totals

Applicant Status	POLAR2	2010	2011	2012	2013	2014
Placed	Quintile 1	-5%	-5%	3%	0%	18%
	Quintile 2	-2%	-10%	-1%	0%	3%
	Quintile 3	3%	-1%	0%	0%	1%
	Quintile 4	3%	-2%	-0%	0%	5%
	Quintile 5	2%	-2%	2%	0%	0%

P.22 Placed 18 year old applicants from Wales by POLAR2 quintile: 5 days after A level results day

Placed 18 year old applicants: entry rate

Quintile 1
 Quintile 2
 Quintile 3
 Quintile 4
 Quintile 5



P.23 Placed 18 year old applicants from Wales by POLAR2 quintile: 5 days after A level results day

Placed 18 year old applicants: entry rate

Applicant Status	POLAR2	2010	2011	2012	2013	2014
Placed	Quintile 1	11.0%	11.4%	12.6%	12.7%	15.4%
	Quintile 2	17.9%	17.2%	18.6%	19.3%	20.1%
	Quintile 3	23.0%	22.5%	23.4%	24.1%	24.8%
	Quintile 4	29.8%	28.8%	29.6%	30.3%	32.4%
	Quintile 5	40.0%	39.5%	41.2%	40.7%	41.2%

P.24 Placed 18 year old applicants from Wales by POLAR2 quintile: 5 days after A level results day

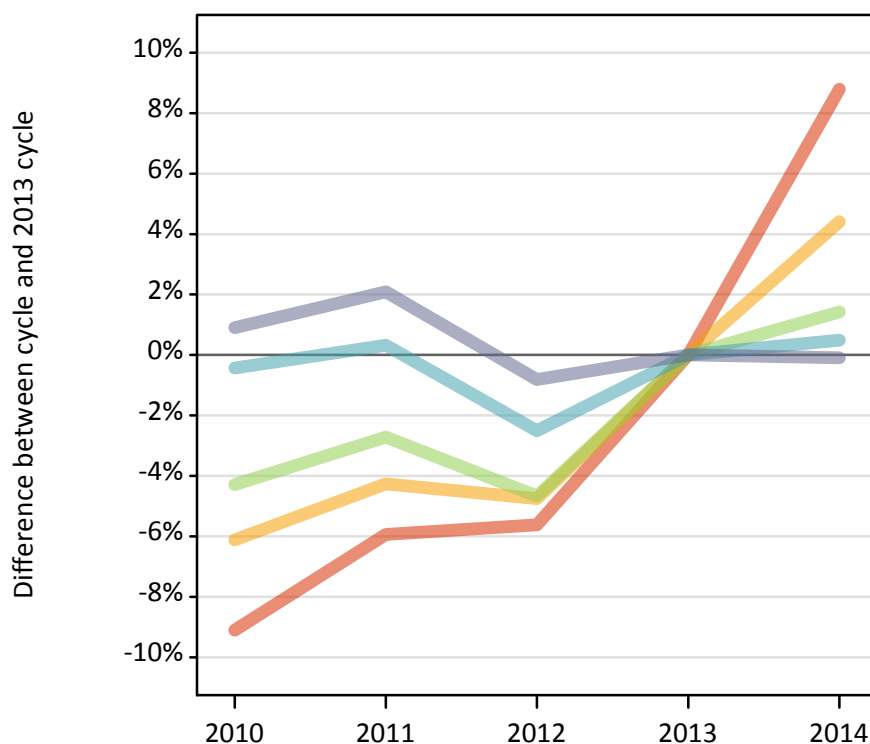
Placed 18 year old applicants: entry rate (indexed to 100 = Quintile 1)

Applicant Status	POLAR2	2010	2011	2012	2013	2014
Placed	Quintile 1	100	100	100	100	100
	Quintile 2	162	151	148	152	131
	Quintile 3	208	198	186	190	161
	Quintile 4	270	253	235	239	211
	Quintile 5	363	347	326	322	268

P.25 Placed 18 year old applicants from the UK by POLAR2 quintile: 5 days after A level results day

Placed 18 year old applicants: change relative to 2013 cycle totals

Quintile 1
 Quintile 2
 Quintile 3
 Quintile 4
 Quintile 5



P.26 Placed 18 year old applicants from the UK by POLAR2 quintile: 5 days after A level results day

Applicant Status	POLAR2	2010	2011	2012	2013	2014
Placed	Quintile 1	19,300	19,970	20,040	21,230	23,090
	Quintile 2	28,950	29,520	29,370	30,830	32,190
	Quintile 3	36,930	37,540	36,790	38,590	39,130
	Quintile 4	48,890	49,250	47,870	49,100	49,340
	Quintile 5	65,120	65,890	64,020	64,540	64,480

P.27 Placed 18 year old applicants from the UK by POLAR2 quintile: 5 days after A level results day

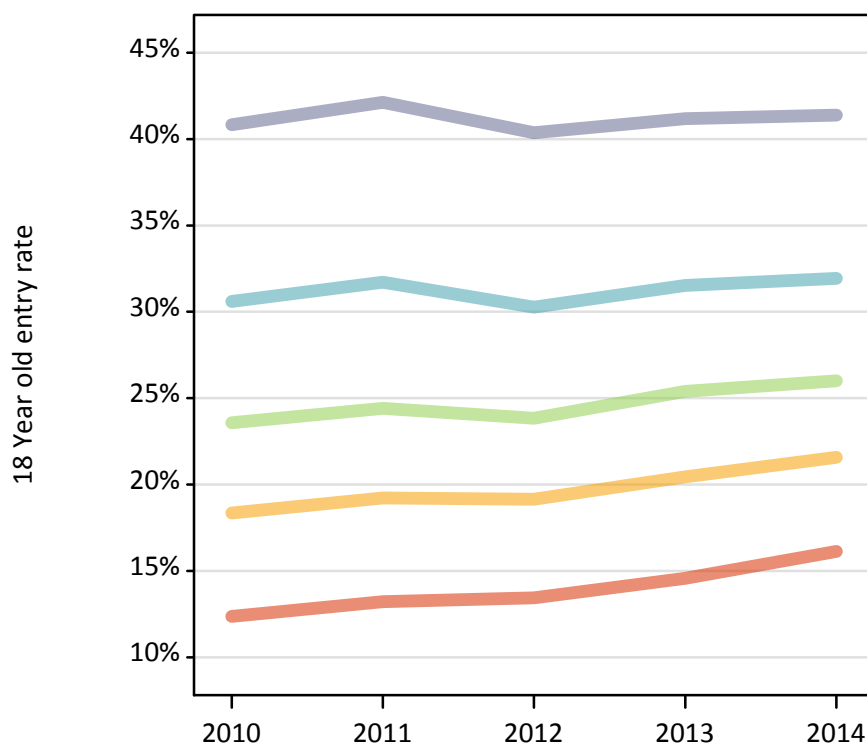
Placed 18 year old applicants: change relative to 2013 cycle totals

Applicant Status	POLAR2	2010	2011	2012	2013	2014
Placed	Quintile 1	-9%	-6%	-6%	0%	9%
	Quintile 2	-6%	-4%	-5%	0%	4%
	Quintile 3	-4%	-3%	-5%	0%	1%
	Quintile 4	-0%	0%	-3%	0%	0%
	Quintile 5	1%	2%	-1%	0%	-0%

P.28 Placed 18 year old applicants from the UK by POLAR2 quintile: 5 days after A level results day

Placed 18 year old applicants: entry rate

— Quintile 1
— Quintile 2
— Quintile 3
— Quintile 4
— Quintile 5



P.29 Placed 18 year old applicants from the UK by POLAR2 quintile: 5 days after A level results day

Placed 18 year old applicants: entry rate

Applicant Status	POLAR2	2010	2011	2012	2013	2014
Placed	Quintile 1	12.4%	13.2%	13.4%	14.6%	16.1%
	Quintile 2	18.4%	19.2%	19.1%	20.4%	21.6%
	Quintile 3	23.6%	24.4%	23.8%	25.4%	26.0%
	Quintile 4	30.6%	31.7%	30.3%	31.5%	31.9%
	Quintile 5	40.8%	42.1%	40.4%	41.2%	41.4%

P.30 Placed 18 year old applicants from the UK by POLAR2 quintile: 5 days after A level results day

Placed 18 year old applicants: entry rate (indexed to 100 = Quintile 1)

Applicant Status	POLAR2	2010	2011	2012	2013	2014
Placed	Quintile 1	100	100	100	100	100
	Quintile 2	148	145	142	140	134
	Quintile 3	191	185	177	174	161
	Quintile 4	247	240	225	216	198
	Quintile 5	330	319	300	283	257