

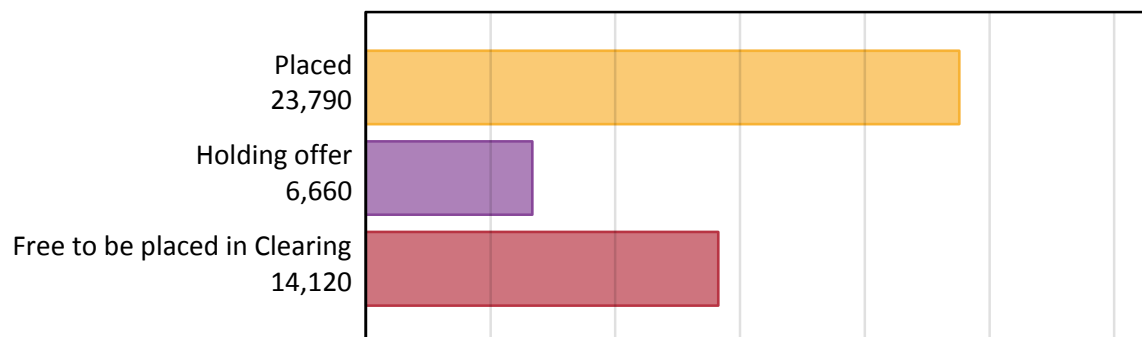
Daily Clearing Analysis: Overview

Analysis at 00:05 on Wednesday 20 August 2014 (6 days after A level results day)

A.1 Applicants by type and status from the EU - excluding UK, 2014 cycle

Applicant type	Status	2014
Main scheme	Placed (Clearing)	830
	Placed (Adjustment)	40
	Placed (Firm)	20,080
	Placed (Insurance)	1,700
	Placed (Other)	950
	Holding offer	6,660
	Free to be placed in Clearing	14,120
Direct to Clearing	Placed (Direct to Clearing)	190
	Other (Direct to Clearing)	370
All applicants	Placed	23,790

A.2 Summary of applicants who are placed, holding offers or free to be placed in Clearing (the EU - excluding UK)



A.3 All placed applicants from the EU - excluding UK: 6 days after A level results day

All placed applicants: difference between cycle and 2013 cycle

Placed



A.4 All placed applicants from the EU - excluding UK: 6 days after A level results day

All placed applicants: applicants at 6 days after A level results day

Applicant type	Status	2010	2011	2012	2013	2014
All applicants	Placed	22,350	23,980	20,670	21,960	23,790

A.5 All placed applicants from the EU - excluding UK: 6 days after A level results day

All placed applicants: difference between cycle and 2013 cycle

Applicant type	Status	2010	2011	2012	2013	2014
All applicants	Placed	2%	9%	-6%	0%	8%

A.6 Placed main scheme applicants from the EU - excluding UK: 6 days after A level results day

Selected placed routes: difference between cycle and 2013 cycle

Placed (Clearing)
Placed (Firm)
Placed (Insurance)



A.7 Placed main scheme applicants from the EU - excluding UK: 6 days after A level results day

All Main scheme placed routes (excluding Adjustment): applicants at 6 days after A level results day

Applicant type	Status	2010	2011	2012	2013	2014
Main scheme	Placed (Clearing)	610	620	750	700	830
	Placed (Firm)	18,920	20,340	17,470	18,520	20,080
	Placed (Insurance)	1,500	1,710	1,360	1,520	1,700
	Placed (Other)	1,160	1,170	870	970	950

A.8 Placed main scheme applicants from the EU - excluding UK: 6 days after A level results day

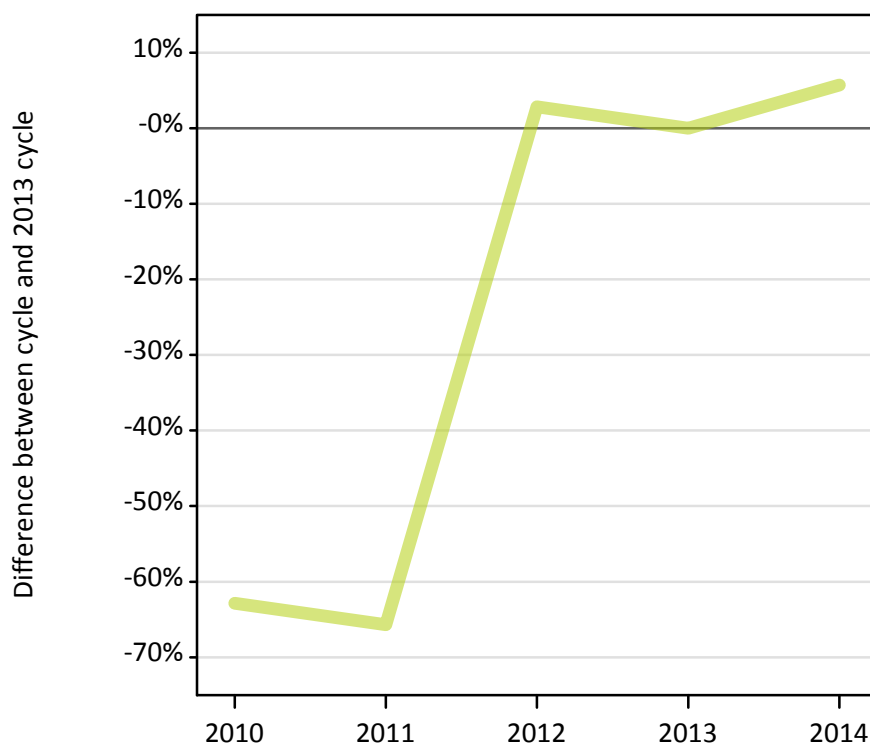
Selected placed routes: difference between cycle and 2013 cycle

Applicant type	Status	2010	2011	2012	2013	2014
Main scheme	Placed (Clearing)	-13%	-12%	7%	0%	19%
	Placed (Firm)	2%	10%	-6%	0%	8%
	Placed (Insurance)	-1%	13%	-10%	0%	12%

A.9 Main scheme applicants placed through adjustment: 6 days after A level results day

Placed through adjustment: difference between cycle and 2013 cycle

Placed (Adjustment)



A.10 Main scheme applicants placed through adjustment: 6 days after A level results day

Placed through adjustment: applicants at 6 days after A level results day

Applicant type	Status	2010	2011	2012	2013	2014
Main scheme	Placed (Adjustment)	10	10	40	40	40

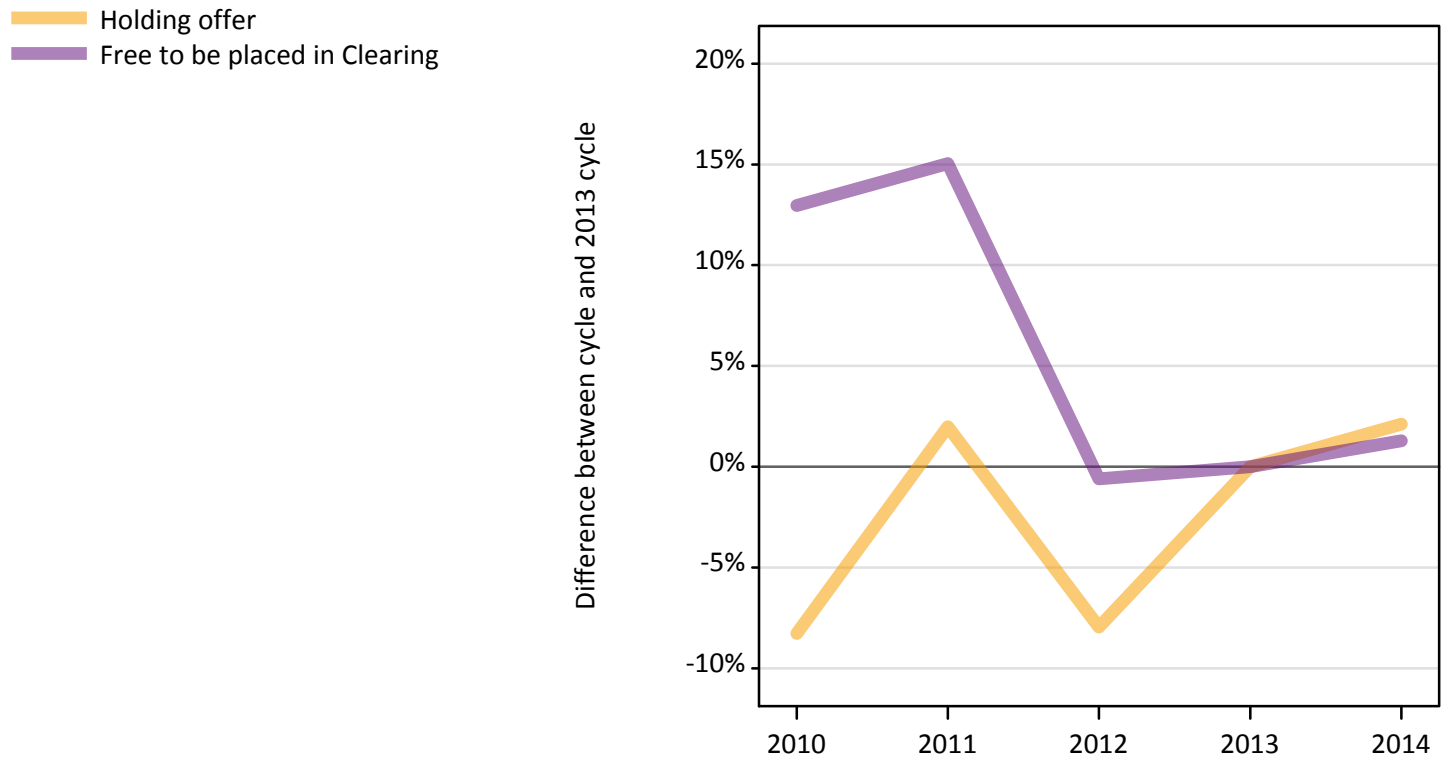
A.11 Main scheme applicants placed through adjustment: 6 days after A level results day

Placed through adjustment: difference between cycle and 2013 cycle

Applicant type	Status	2010	2011	2012	2013	2014
Main scheme	Placed (Adjustment)	-63%	-66%	3%	0%	6%

A.12 Main scheme applicants not currently placed from the EU - excluding UK: 6 days after A level results day

Applicants in unplaced states: difference between cycle and 2013 cycle



A.13 Main scheme applicants not currently placed from the EU - excluding UK: 6 days after A level results day

Applicants in unplaced states: applicants at 6 days after A level results day

Applicant type	Status	2010	2011	2012	2013	2014
Main scheme	Holding offer	5,990	6,660	6,010	6,530	6,660
	Free to be placed in Clearing	15,750	16,040	13,860	13,940	14,120

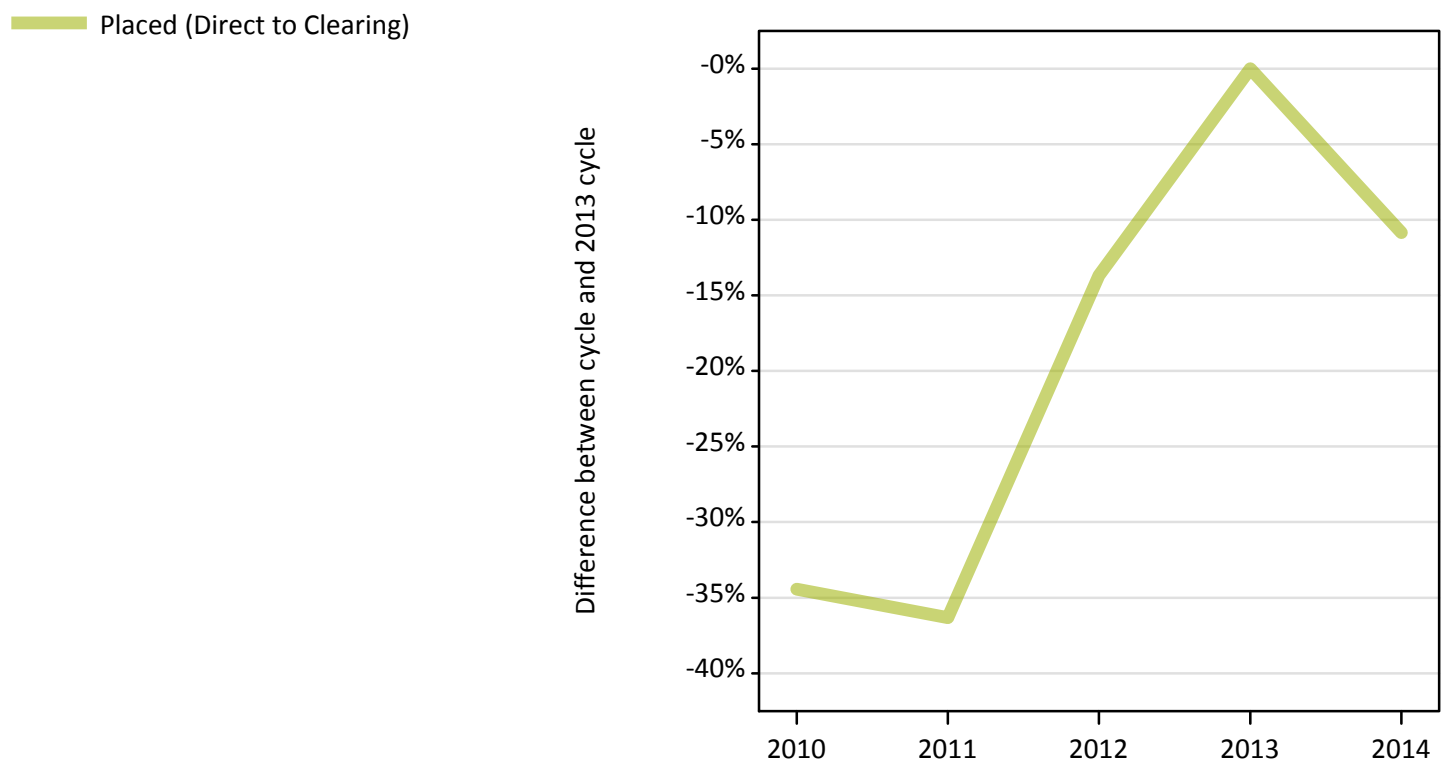
A.14 Main scheme applicants not currently placed from the EU - excluding UK: 6 days after A level results day

Applicants in unplaced states: difference between cycle and 2013 cycle

Applicant type	Status	2010	2011	2012	2013	2014
Main scheme	Holding offer	-8%	2%	-8%	0%	2%
	Free to be placed in Clearing	13%	15%	-1%	0%	1%

A.15 Direct to Clearing applicants from the EU - excluding UK: 6 days after A level results day

Placed (Direct to Clearing): difference between cycle and 2013 cycle



A.16 Direct to Clearing applicants from the EU - excluding UK: 6 days after A level results day

Direct to Clearing 6 days after A level results day

Applicant type	Status	2010	2011	2012	2013	2014
Direct to Clearing	Placed (Direct to Clearing)	140	140	180	210	190
	Other (Direct to Clearing)	540	510	380	370	370

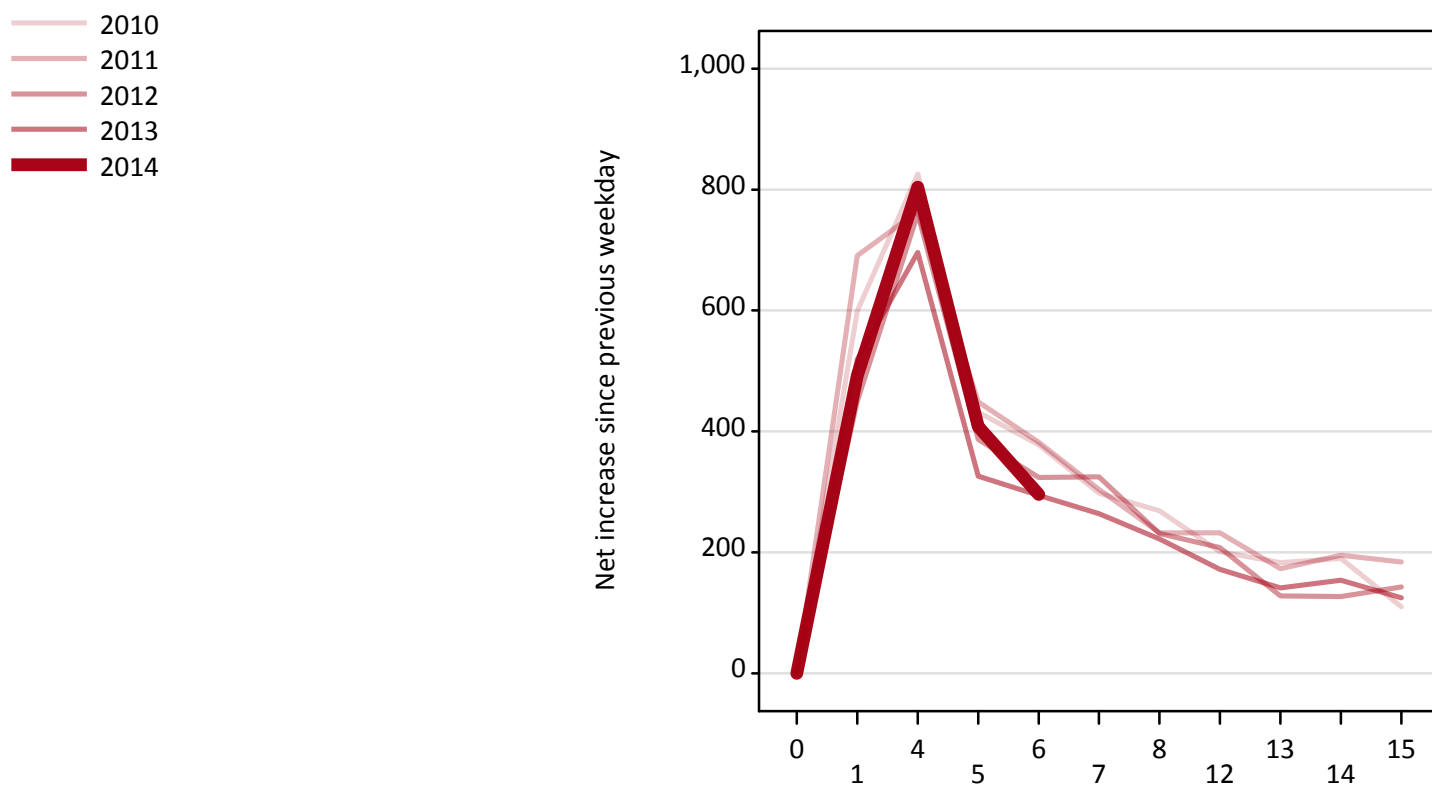
A.17 Direct to Clearing applicants from the EU - excluding UK: 6 days after A level results day

Placed (Direct to Clearing): difference between cycle and 2013 cycle

Applicant type	Status	2010	2011	2012	2013	2014
Direct to Clearing	Placed (Direct to Clearing)	-34%	-36%	-14%	0%	-11%

A.18 All Placed: Daily net change (from the EU - excluding UK)

Net increase since previous weekday (2014 cycle up to 6 days after A level results day)



A.19 All Placed: Daily net change (from the EU - excluding UK)

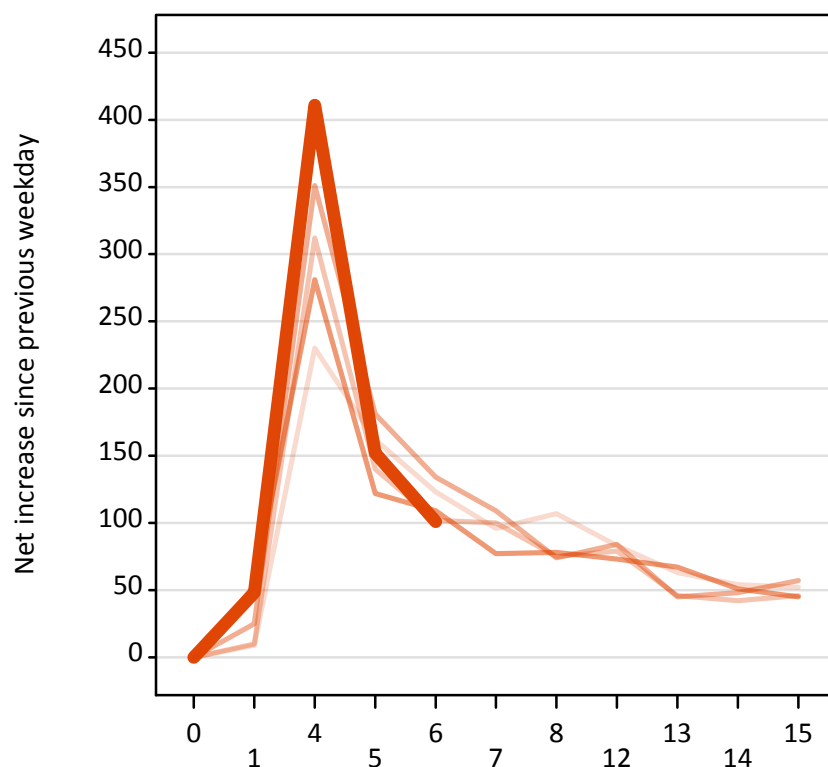
Net increase since previous weekday (2014 cycle up to 6 days after A level results day)

Applicant status, days since A level results day		2010	2011	2012	2013	2014
All Placed	0	0	0	0	0	0
	1	600	690	450	520	490
	4	830	760	760	700	800
	5	430	450	390	330	410
	6	380	380	320	290	300
	7	300	300	330	260	
	8	270	230	230	220	
	12	200	230	210	170	
	13	180	170	130	140	
	14	190	200	130	150	
	15	110	180	140	130	

A.20 Placed through Clearing only: Daily net change (from the EU - excluding UK)

Net increase since previous weekday (2014 cycle up to 6 days after A level results day)

2010
2011
2012
2013
2014



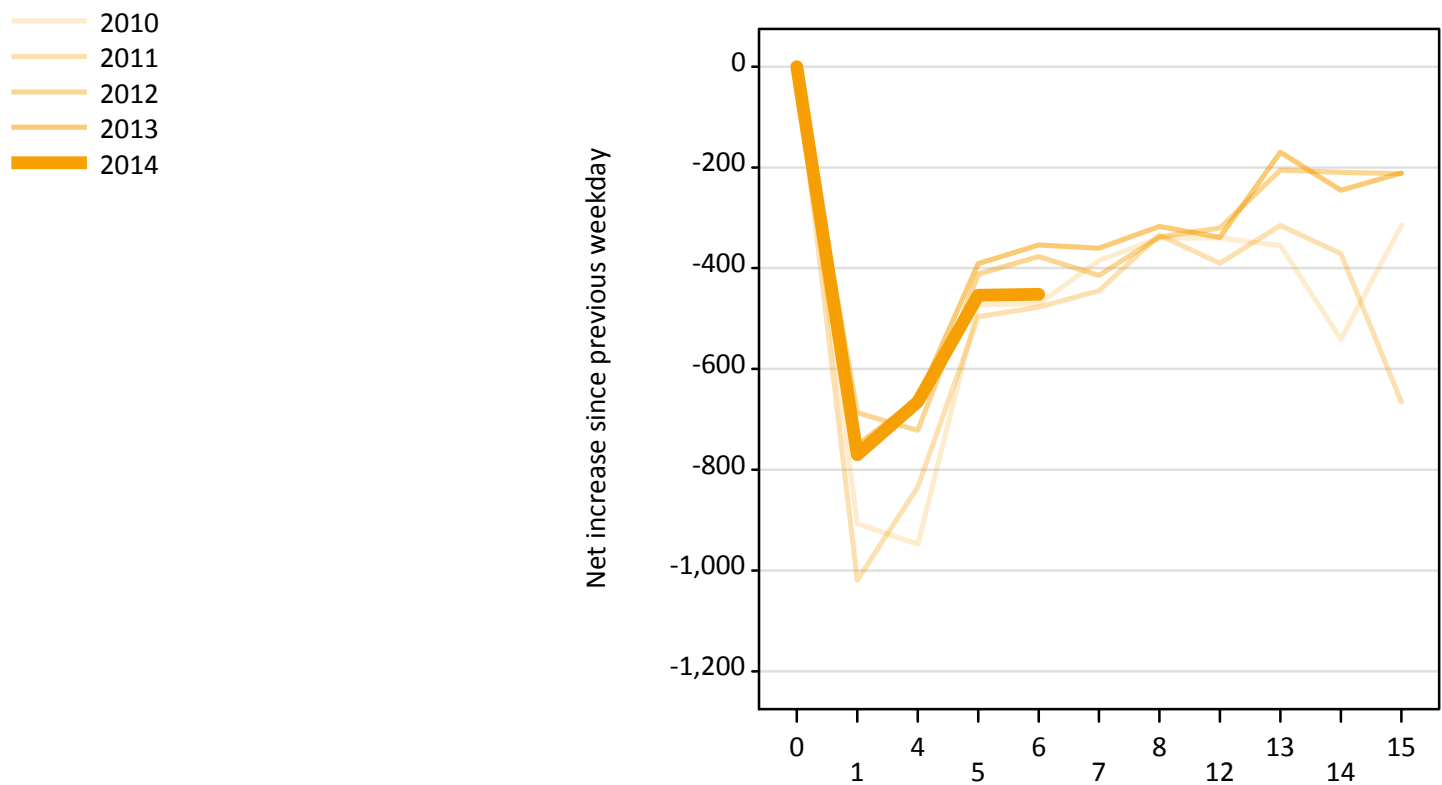
A.21 Placed through Clearing only: Daily net change (from the EU - excluding UK)

Net increase since previous weekday (2014 cycle up to 6 days after A level results day)

Applicant status, days since A level results day		2010	2011	2012	2013	2014
Placed through Clearing only	0	0	0	0	0	0
	1	10	10	30	50	50
	4	230	310	350	280	410
	5	160	140	180	120	150
	6	120	100	130	110	100
	7	100	100	110	80	
	8	110	80	70	80	
	12	80	80	80	70	
	13	60	50	50	70	
	14	50	40	50	50	
	15	50	50	60	50	

A.22 Holding Offer: Daily net change (from the EU - excluding UK)

Net increase since previous weekday (2014 cycle up to 6 days after A level results day)



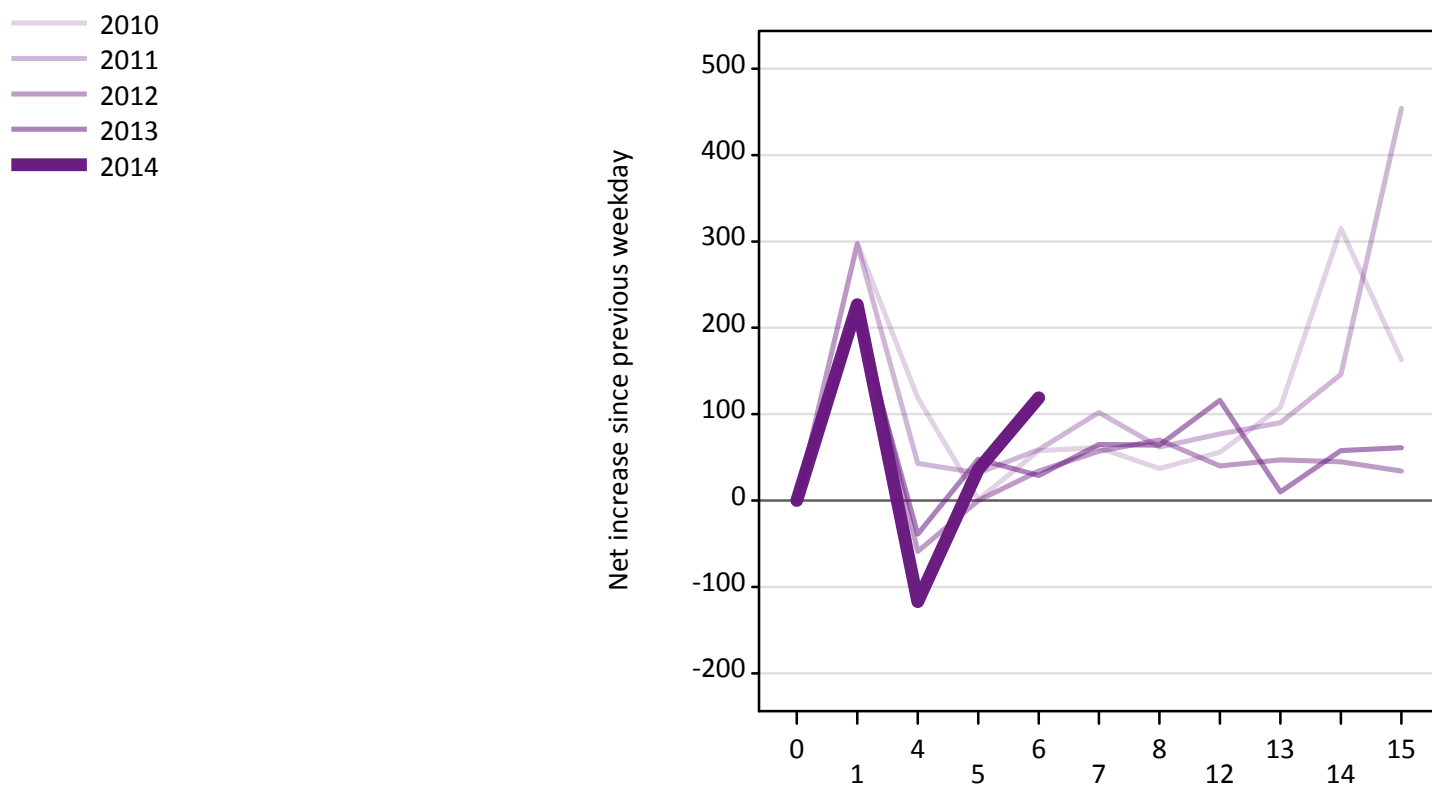
A.23 Holding Offer: Daily net change (from the EU - excluding UK)

Net increase since previous weekday (2014 cycle up to 6 days after A level results day)

Applicant status, days since A level results day		2010	2011	2012	2013	2014
Holding Offer	0	0	0	0	0	0
	1	-910	-1,020	-690	-750	-770
	4	-950	-830	-720	-660	-670
	5	-470	-500	-410	-390	-450
	6	-470	-480	-380	-350	-450
	7	-390	-450	-410	-360	
	8	-340	-330	-340	-320	
	12	-340	-390	-320	-340	
	13	-360	-320	-210	-170	
	14	-540	-370	-210	-250	
	15	-320	-670	-210	-210	

A.24 Free to be placed in Clearing: Daily net change (from the EU - excluding UK)

Net increase since previous weekday (2014 cycle up to 6 days after A level results day)



A.25 Free to be placed in Clearing: Daily net change (from the EU - excluding UK)

Net increase since previous weekday (2014 cycle up to 6 days after A level results day)

Applicant status, days since A level results day		2010	2011	2012	2013	2014
Free to be placed in Clearing	0	0	0	0	0	0
	1	300	300	230	210	230
	4	120	40	-60	-40	-120
	5	0	30	0	50	40
	6	60	60	30	30	120
	7	60	100	60	70	
	8	40	60	70	60	
	12	60	80	40	120	
	13	110	90	50	10	
	14	320	150	50	60	
	15	160	450	30	60	