

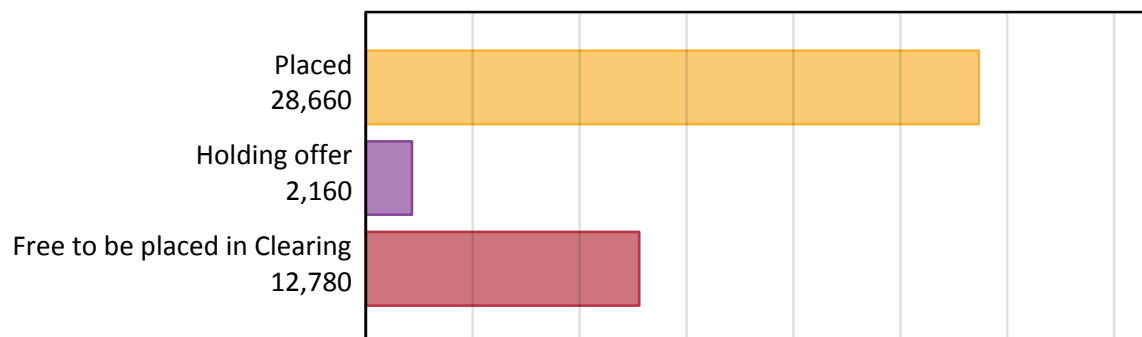
Daily Clearing Analysis: Overview

Analysis at 00:05 on Wednesday 20 August 2014 (6 days after A level results day)

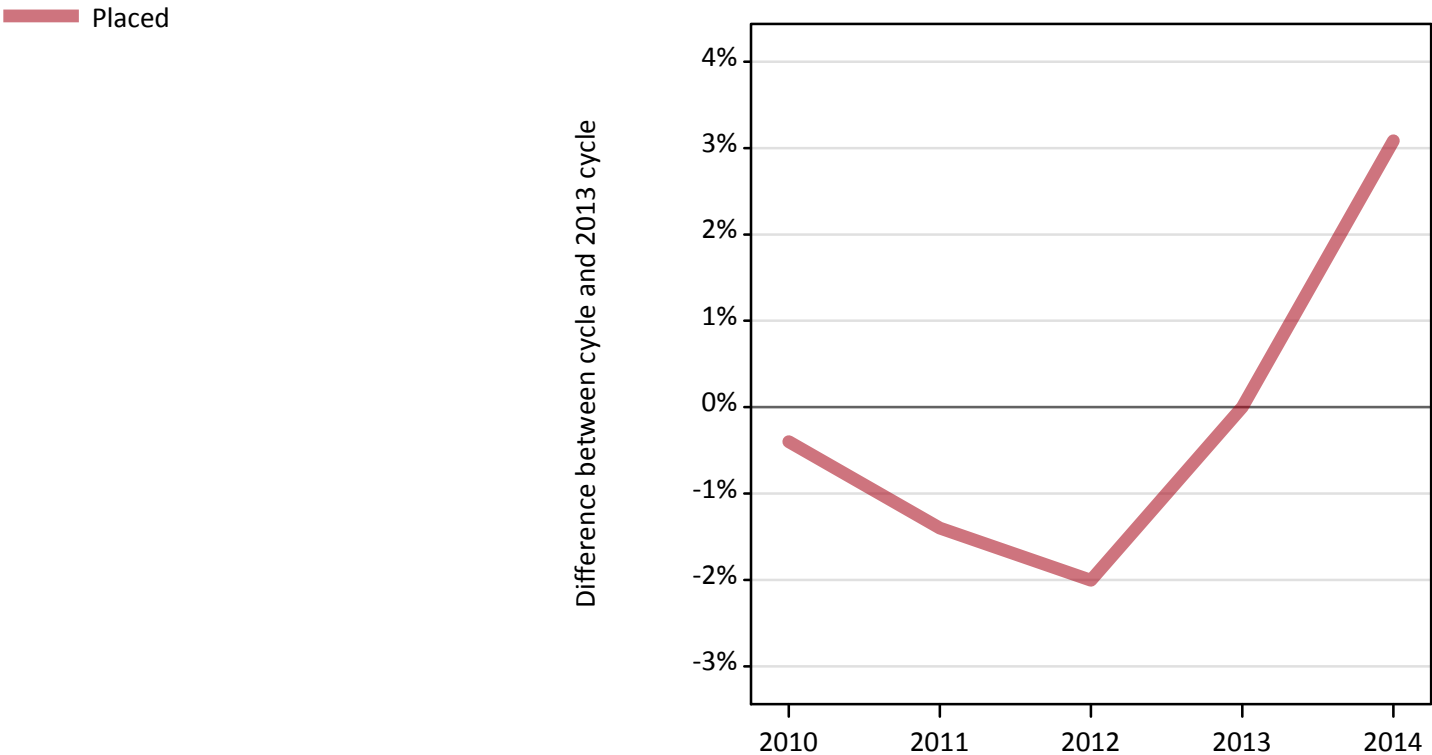
A.1 Applicants by type and status from Scotland, 2014 cycle

Applicant type	Status	2014
Main scheme	Placed (Clearing)	750
	Placed (Adjustment)	10
	Placed (Firm)	25,910
	Placed (Insurance)	1,410
	Placed (Other)	490
	Holding offer	2,160
	Free to be placed in Clearing	12,780
Direct to Clearing	Placed (Direct to Clearing)	90
	Other (Direct to Clearing)	250
All applicants	Placed	28,660

A.2 Summary of applicants who are placed, holding offers or free to be placed in Clearing (Scotland)



A.3 All placed applicants from Scotland: 6 days after A level results day
 All placed applicants: difference between cycle and 2013 cycle



A.4 All placed applicants from Scotland: 6 days after A level results day
 All placed applicants: applicants at 6 days after A level results day

Applicant type	Status	2010	2011	2012	2013	2014
All applicants	Placed	27,690	27,410	27,250	27,800	28,660

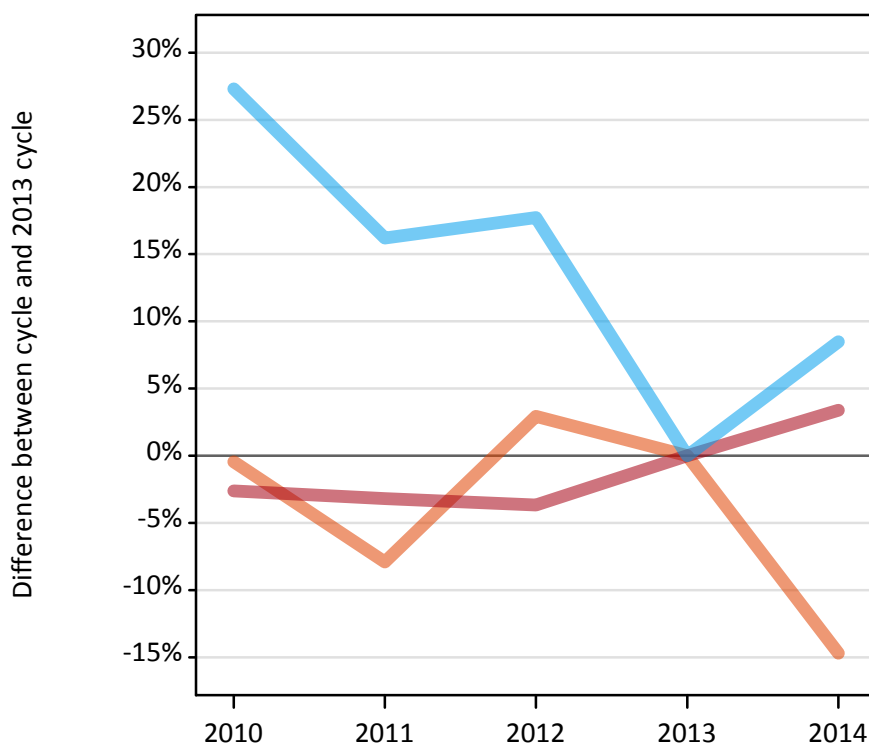
A.5 All placed applicants from Scotland: 6 days after A level results day
 All placed applicants: difference between cycle and 2013 cycle

Applicant type	Status	2010	2011	2012	2013	2014
All applicants	Placed	-0%	-1%	-2%	0%	3%

A.6 Placed main scheme applicants from Scotland: 6 days after A level results day

Selected placed routes: difference between cycle and 2013 cycle

Placed (Clearing)
Placed (Firm)
Placed (Insurance)



A.7 Placed main scheme applicants from Scotland: 6 days after A level results day

All Main scheme placed routes (excluding Adjustment): applicants at 6 days after A level results day

Applicant type	Status	2010	2011	2012	2013	2014
Main scheme	Placed (Clearing)	880	810	910	880	750
	Placed (Firm)	24,400	24,260	24,140	25,060	25,910
	Placed (Insurance)	1,650	1,510	1,530	1,300	1,410
	Placed (Other)	670	740	550	460	490

A.8 Placed main scheme applicants from Scotland: 6 days after A level results day

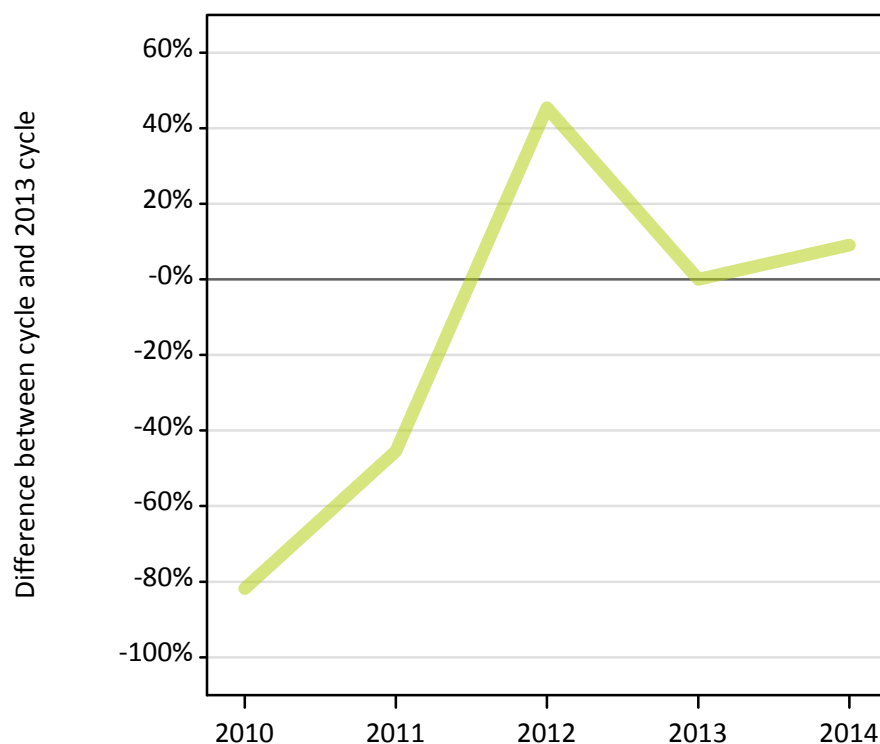
Selected placed routes: difference between cycle and 2013 cycle

Applicant type	Status	2010	2011	2012	2013	2014
Main scheme	Placed (Clearing)	-0%	-8%	3%	0%	-15%
	Placed (Firm)	-3%	-3%	-4%	0%	3%
	Placed (Insurance)	27%	16%	18%	0%	8%

A.9 Main scheme applicants placed through adjustment: 6 days after A level results day

Placed through adjustment: difference between cycle and 2013 cycle

Placed (Adjustment)



A.10 Main scheme applicants placed through adjustment: 6 days after A level results day

Placed through adjustment: applicants at 6 days after A level results day

Applicant type	Status	2010	2011	2012	2013	2014
Main scheme	Placed (Adjustment)	0	10	20	10	10

A.11 Main scheme applicants placed through adjustment: 6 days after A level results day

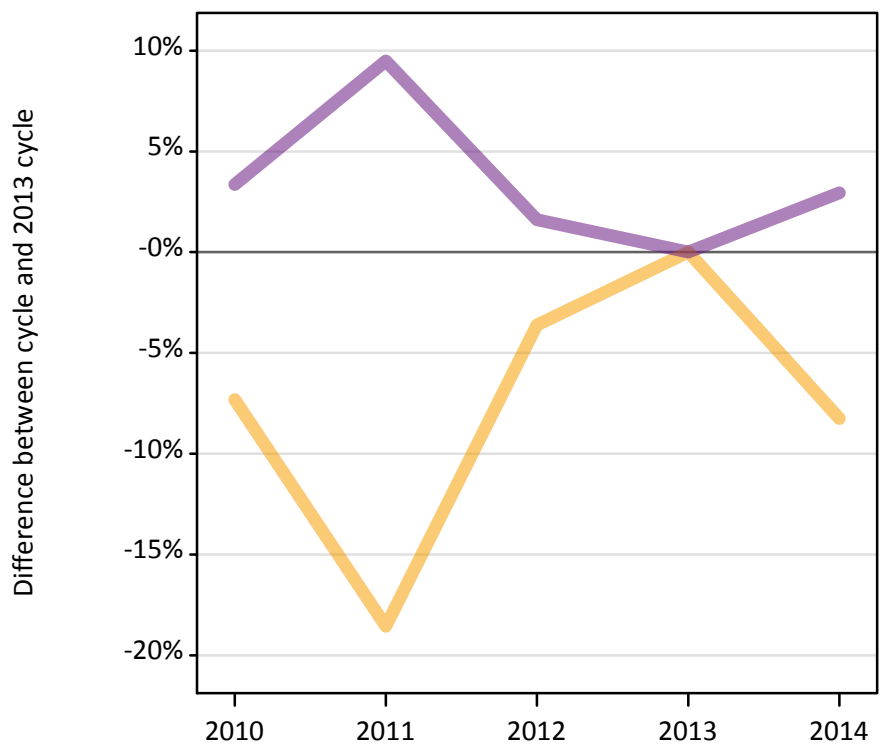
Placed through adjustment: difference between cycle and 2013 cycle

Applicant type	Status	2010	2011	2012	2013	2014
Main scheme	Placed (Adjustment)	-82%	-45%	45%	0%	9%

A.12 Main scheme applicants not currently placed from Scotland: 6 days after A level results day

Applicants in unplaced states: difference between cycle and 2013 cycle

— Holding offer
— Free to be placed in Clearing



A.13 Main scheme applicants not currently placed from Scotland: 6 days after A level results day

Applicants in unplaced states: applicants at 6 days after A level results day

Applicant type	Status	2010	2011	2012	2013	2014
Main scheme	Holding offer	2,180	1,910	2,260	2,350	2,160
	Free to be placed in Clearing	12,840	13,600	12,620	12,420	12,780

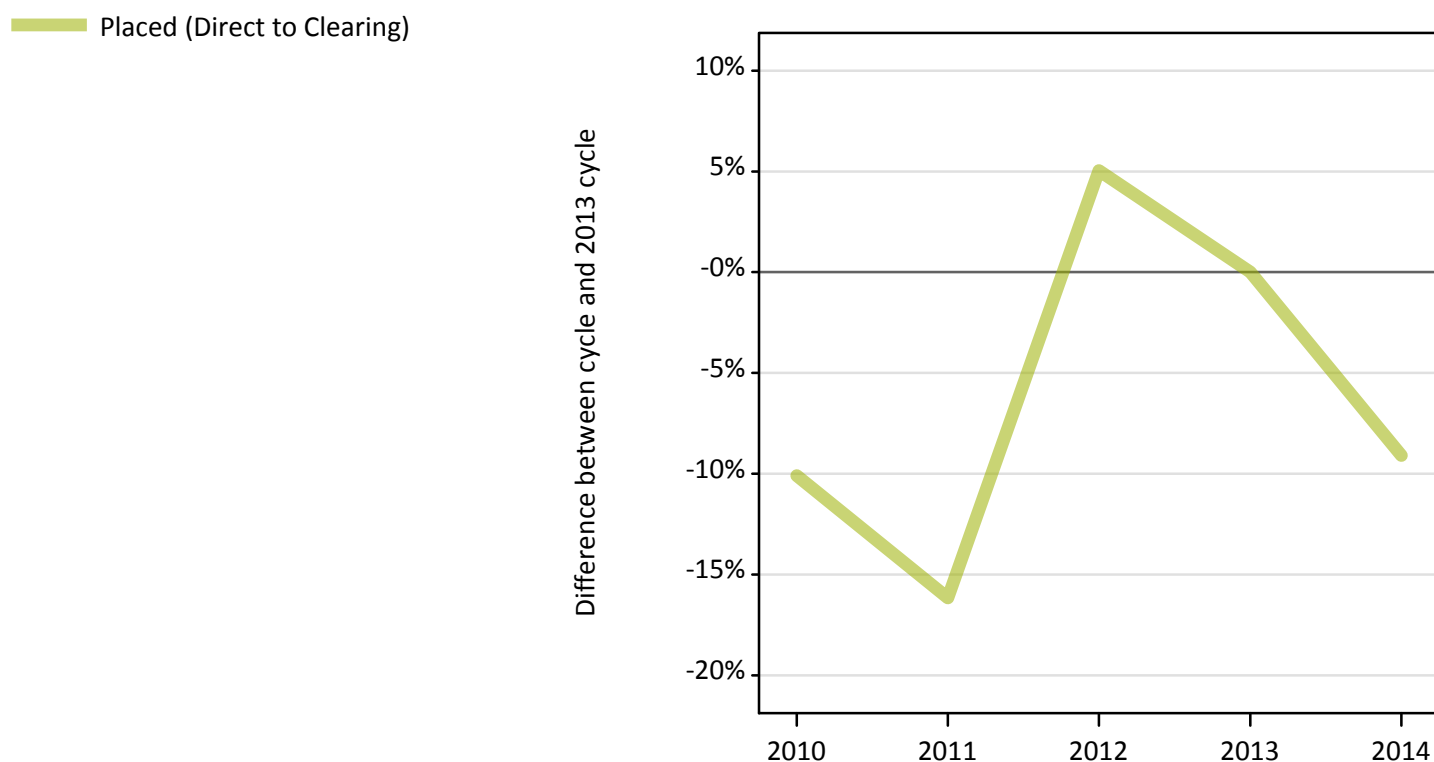
A.14 Main scheme applicants not currently placed from Scotland: 6 days after A level results day

Applicants in unplaced states: difference between cycle and 2013 cycle

Applicant type	Status	2010	2011	2012	2013	2014
Main scheme	Holding offer	-7%	-19%	-4%	0%	-8%
	Free to be placed in Clearing	3%	9%	2%	0%	3%

A.15 Direct to Clearing applicants from Scotland: 6 days after A level results day

Placed (Direct to Clearing): difference between cycle and 2013 cycle



A.16 Direct to Clearing applicants from Scotland: 6 days after A level results day

Direct to Clearing 6 days after A level results day

Applicant type	Status	2010	2011	2012	2013	2014
Direct to Clearing	Placed (Direct to Clearing)	90	80	100	100	90
	Other (Direct to Clearing)	360	270	280	290	250

A.17 Direct to Clearing applicants from Scotland: 6 days after A level results day

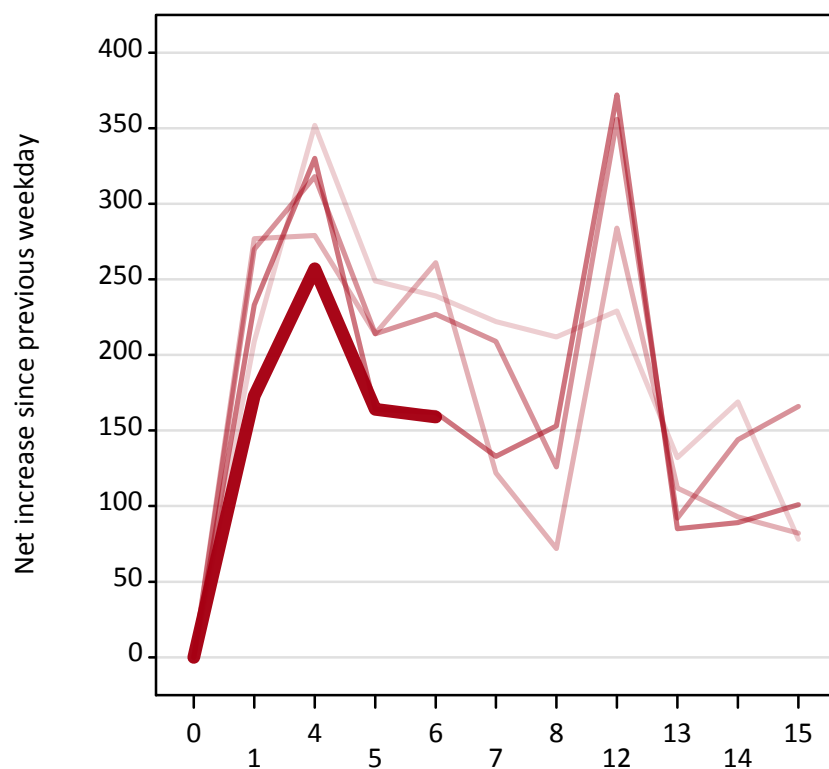
Placed (Direct to Clearing): difference between cycle and 2013 cycle

Applicant type	Status	2010	2011	2012	2013	2014
Direct to Clearing	Placed (Direct to Clearing)	-10%	-16%	5%	0%	-9%

A.18 All Placed: Daily net change (from Scotland)

Net increase since previous weekday (2014 cycle up to 6 days after A level results day)

— 2010
— 2011
— 2012
— 2013
— 2014



A.19 All Placed: Daily net change (from Scotland)

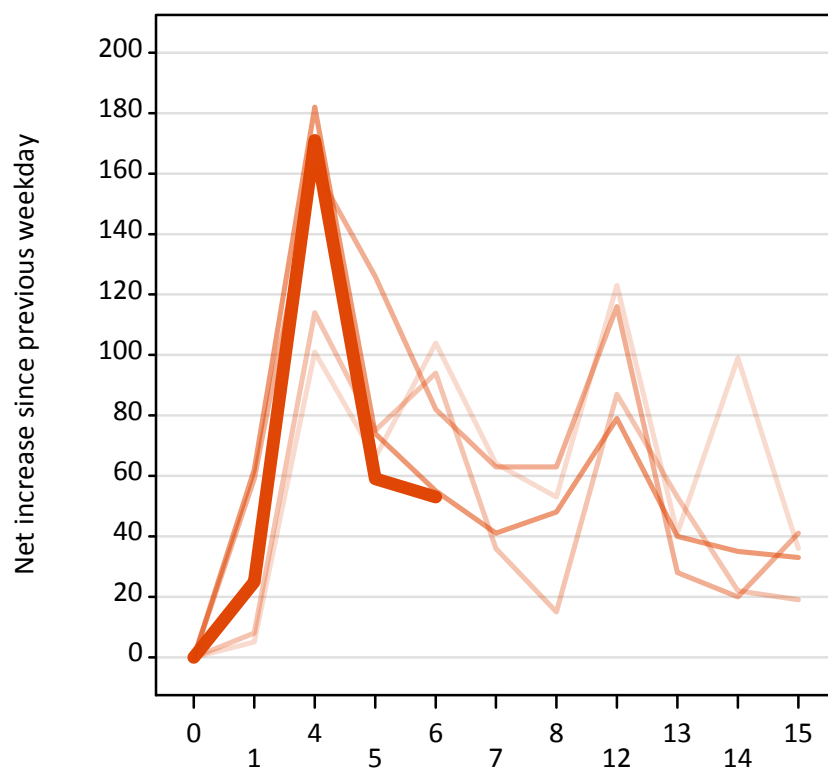
Net increase since previous weekday (2014 cycle up to 6 days after A level results day)

Applicant status, days since A level results day		2010	2011	2012	2013	2014
All Placed	0	0	0	0	0	0
	1	210	280	270	230	170
	4	350	280	320	330	260
	5	250	210	210	160	160
	6	240	260	230	160	160
	7	220	120	210	130	
	8	210	70	130	150	
	12	230	280	360	370	
	13	130	110	90	90	
	14	170	90	140	90	
	15	80	80	170	100	

A.20 Placed through Clearing only: Daily net change (from Scotland)

Net increase since previous weekday (2014 cycle up to 6 days after A level results day)

— 2010
— 2011
— 2012
— 2013
— 2014

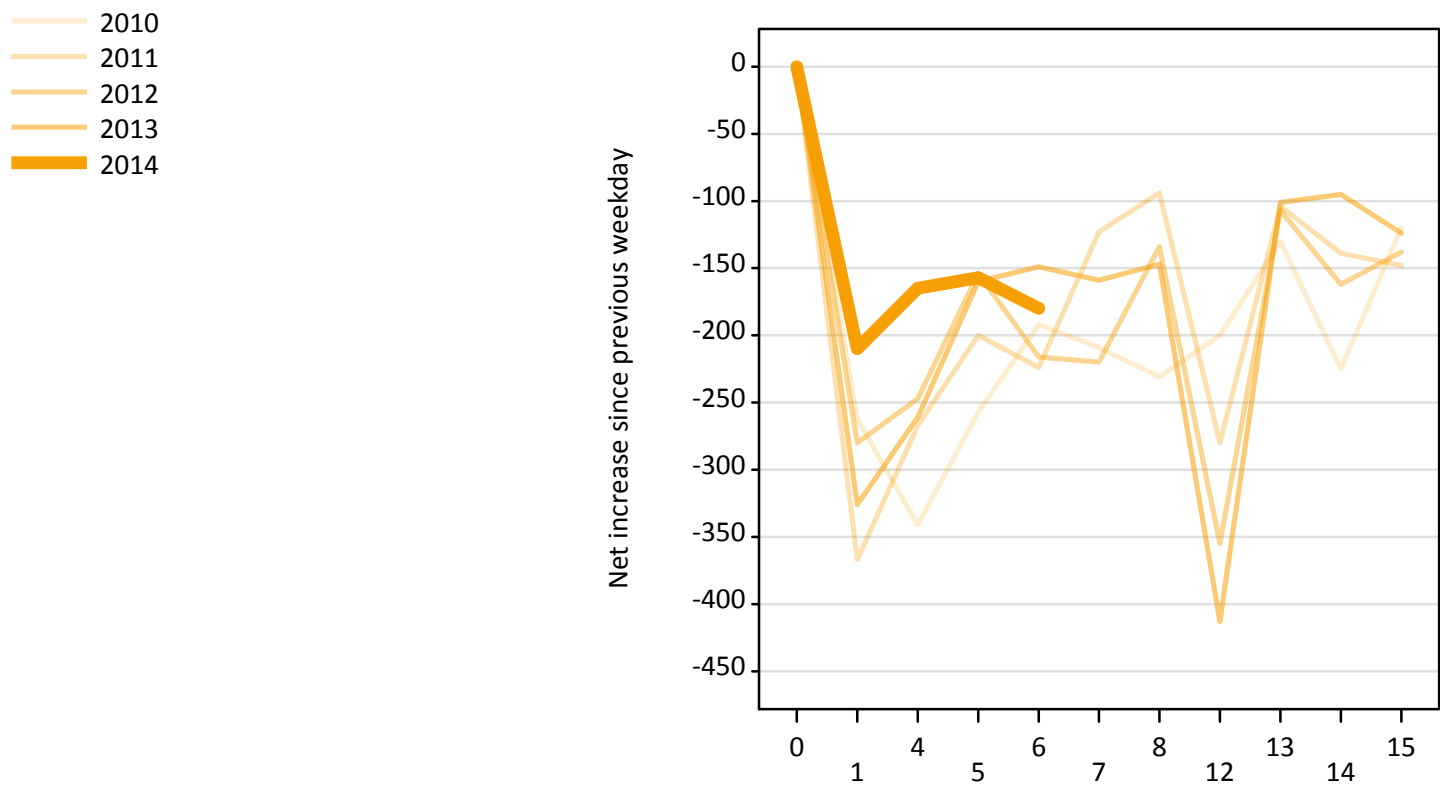


A.21 Placed through Clearing only: Daily net change (from Scotland)

Net increase since previous weekday (2014 cycle up to 6 days after A level results day)

Applicant status, days since A level results day		2010	2011	2012	2013	2014
Placed through Clearing only	0	0	0	0	0	0
	1	10	10	60	60	30
	4	100	110	160	180	170
	5	70	80	130	70	60
	6	100	90	80	60	50
	7	60	40	60	40	
	8	50	20	60	50	
	12	120	90	120	80	
	13	40	50	30	40	
	14	100	20	20	40	
	15	40	20	40	30	

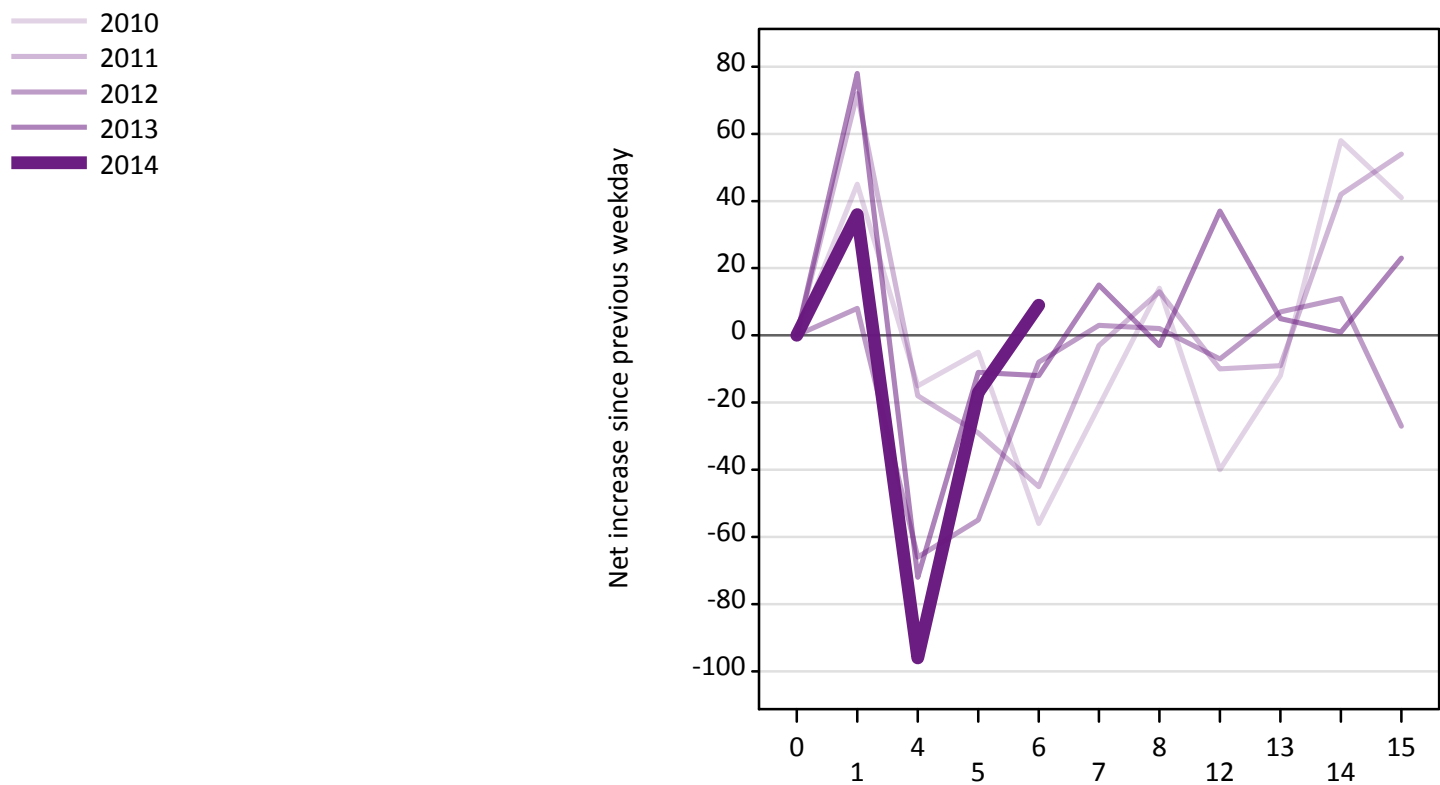
A.22 Holding Offer: Daily net change (from Scotland)
 Net increase since previous weekday (2014 cycle up to 6 days after A level results day)



A.23 Holding Offer: Daily net change (from Scotland)
 Net increase since previous weekday (2014 cycle up to 6 days after A level results day)

Applicant status, days since A level results day		2010	2011	2012	2013	2014
Holding Offer	0	0	0	0	0	0
	1	-260	-370	-280	-330	-210
	4	-340	-270	-250	-260	-170
	5	-260	-200	-150	-160	-160
	6	-190	-220	-220	-150	-180
	7	-210	-120	-220	-160	
	8	-230	-90	-130	-150	
	12	-200	-280	-360	-410	
	13	-130	-100	-110	-100	
	14	-230	-140	-160	-100	
	15	-120	-150	-140	-120	

A.24 Free to be placed in Clearing: Daily net change (from Scotland)
 Net increase since previous weekday (2014 cycle up to 6 days after A level results day)



A.25 Free to be placed in Clearing: Daily net change (from Scotland)
 Net increase since previous weekday (2014 cycle up to 6 days after A level results day)

Applicant status, days since A level results day		2010	2011	2012	2013	2014
Free to be placed in Clearing	0	0	0	0	0	0
	1	50	70	10	80	40
	4	-20	-20	-70	-70	-100
	5	-10	-30	-60	-10	-20
	6	-60	-50	-10	-10	10
	7	-20	0	0	20	
	8	10	10	0	0	
	12	-40	-10	-10	40	
	13	-10	-10	10	10	
	14	60	40	10	0	
	15	40	50	-30	20	