

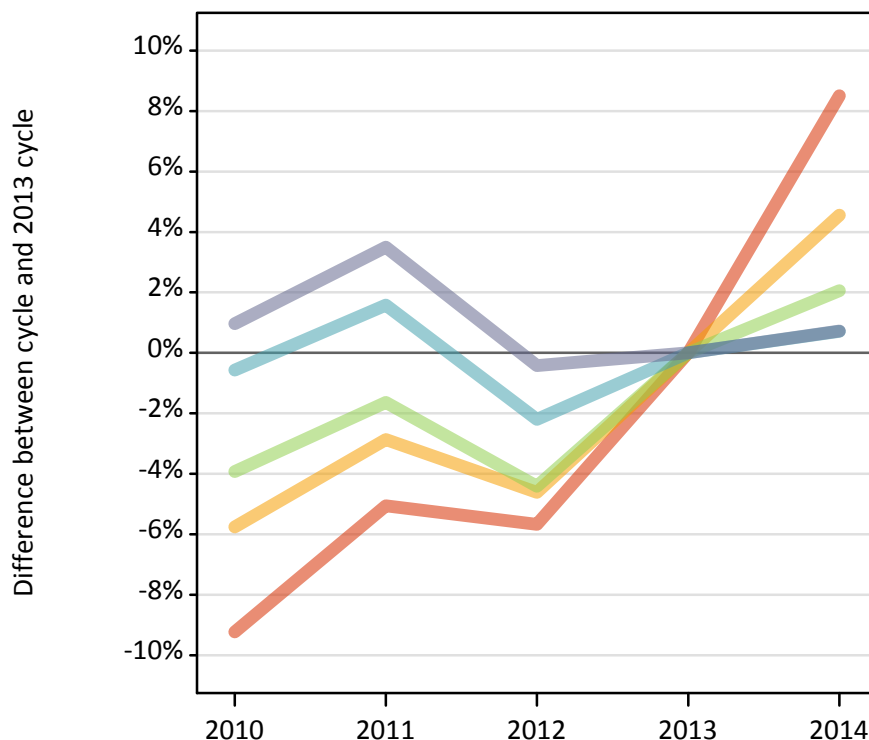
Daily Clearing Analysis: POLAR2

Analysis at 00:05 on Wednesday 20 August 2014 (6 days after A level results day)

P.1 Placed 18 year old applicants from England by POLAR2 quintile: 6 days after A level results day

Placed 18 year old applicants: change relative to 2013 cycle totals

■ Quintile 1
■ Quintile 2
■ Quintile 3
■ Quintile 4
■ Quintile 5



P.2 Placed 18 year old applicants from England by POLAR2 quintile: 6 days after A level results day

Applicant Status		POLAR2	2010	2011	2012	2013	2014
Placed	Quintile 1		17,830	18,650	18,530	19,650	21,320
	Quintile 2		26,130	26,930	26,450	27,720	28,990
	Quintile 3		32,670	33,440	32,500	34,000	34,700
	Quintile 4		41,420	42,310	40,740	41,650	41,950
	Quintile 5		52,150	53,450	51,430	51,650	52,020

P.3 Placed 18 year old applicants from England by POLAR2 quintile: 6 days after A level results day

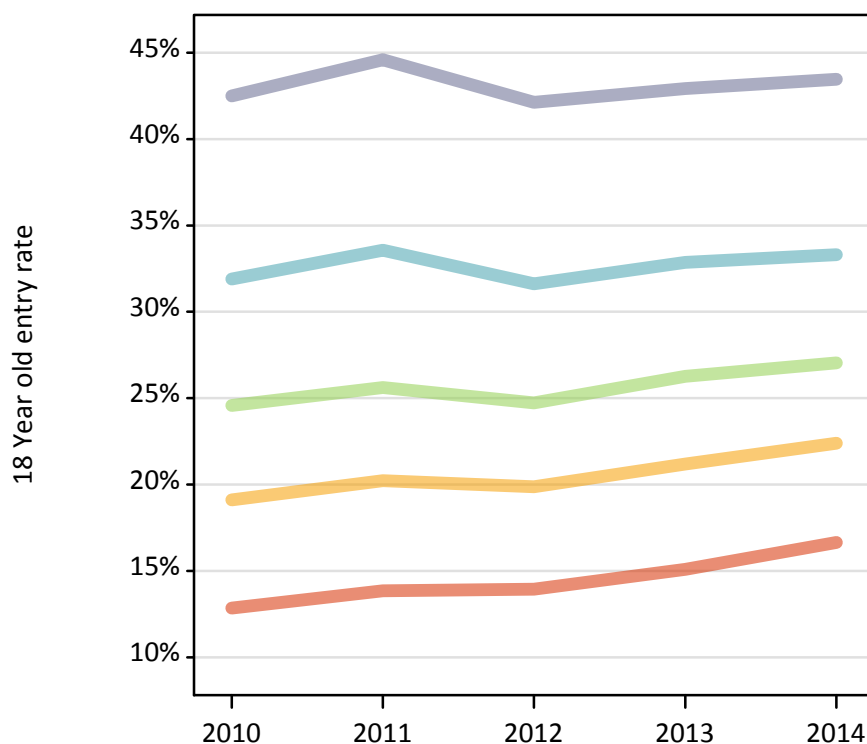
Placed 18 year old applicants: change relative to 2013 cycle totals

Applicant Status		POLAR2	2010	2011	2012	2013	2014
Placed	Quintile 1		-9%	-5%	-6%	0%	9%
	Quintile 2		-6%	-3%	-5%	0%	5%
	Quintile 3		-4%	-2%	-4%	0%	2%
	Quintile 4		-1%	2%	-2%	0%	1%
	Quintile 5		1%	3%	-0%	0%	1%

P.4 Placed 18 year old applicants from England by POLAR2 quintile: 6 days after A level results day

Placed 18 year old applicants: entry rate

Quintile 1
 Quintile 2
 Quintile 3
 Quintile 4
 Quintile 5



P.5 Placed 18 year old applicants from England by POLAR2 quintile: 6 days after A level results day

Placed 18 year old applicants: entry rate

Applicant Status	POLAR2	2010	2011	2012	2013	2014
Placed	Quintile 1	12.8%	13.9%	13.9%	15.1%	16.6%
	Quintile 2	19.1%	20.2%	19.9%	21.2%	22.4%
	Quintile 3	24.6%	25.6%	24.7%	26.3%	27.1%
	Quintile 4	31.9%	33.6%	31.6%	32.9%	33.3%
	Quintile 5	42.5%	44.6%	42.1%	42.9%	43.5%

P.6 Placed 18 year old applicants from England by POLAR2 quintile: 6 days after A level results day

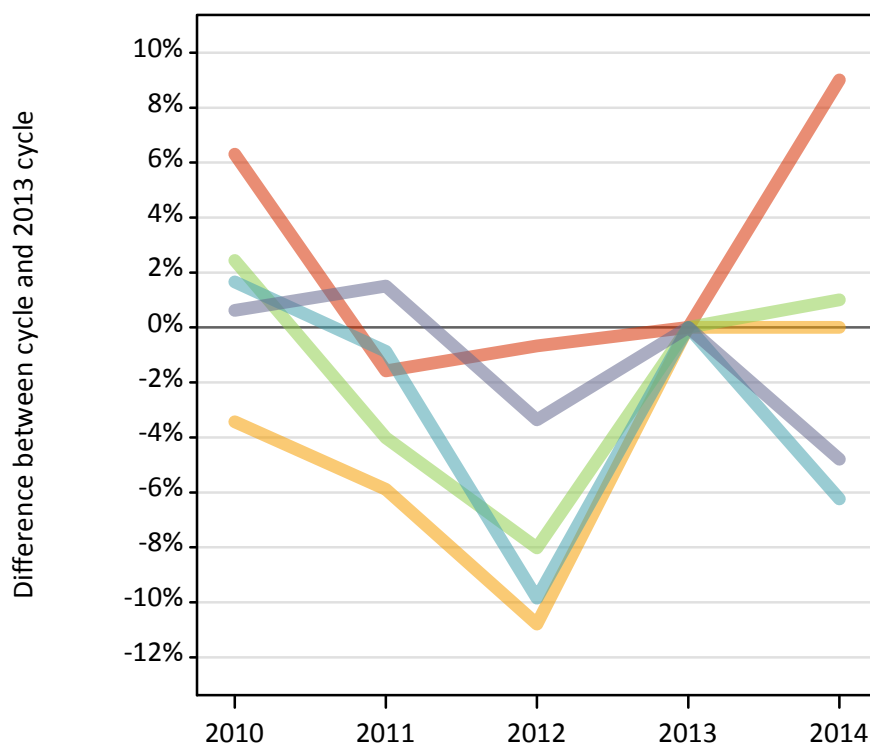
Placed 18 year old applicants: entry rate (indexed to 100 = Quintile 1)

Applicant Status	POLAR2	2010	2011	2012	2013	2014
Placed	Quintile 1	100	100	100	100	100
	Quintile 2	149	146	143	140	134
	Quintile 3	191	185	178	174	162
	Quintile 4	248	242	227	218	200
	Quintile 5	331	322	302	284	261

P.7 Placed 18 year old applicants from Northern Ireland by POLAR2 quintile: 6 days after A level results day

Placed 18 year old applicants: change relative to 2013 cycle totals

Quintile 1
 Quintile 2
 Quintile 3
 Quintile 4
 Quintile 5



P.8 Placed 18 year old applicants from Northern Ireland by POLAR2 quintile: 6 days after A level results day

Applicant Status	POLAR2	2010	2011	2012	2013	2014
Placed	Quintile 1	470	440	440	440	480
	Quintile 2	790	770	730	820	820
	Quintile 3	1,430	1,340	1,280	1,400	1,410
	Quintile 4	2,820	2,750	2,500	2,770	2,600
	Quintile 5	2,730	2,750	2,620	2,710	2,580

P.9 Placed 18 year old applicants from Northern Ireland by POLAR2 quintile: 6 days after A level results day

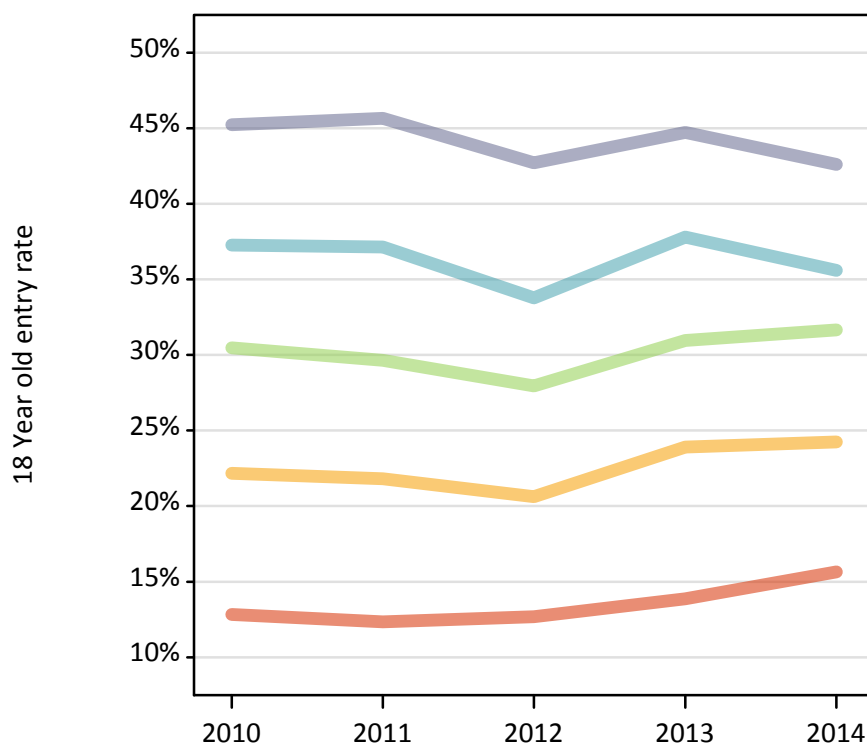
Placed 18 year old applicants: change relative to 2013 cycle totals

Applicant Status	POLAR2	2010	2011	2012	2013	2014
Placed	Quintile 1	6%	-2%	-1%	0%	9%
	Quintile 2	-3%	-6%	-11%	0%	0%
	Quintile 3	2%	-4%	-8%	0%	1%
	Quintile 4	2%	-1%	-10%	0%	-6%
	Quintile 5	1%	2%	-3%	0%	-5%

P.10 Placed 18 year old applicants from Northern Ireland by POLAR2 quintile: 6 days after A level results day

Placed 18 year old applicants: entry rate

— Quintile 1
— Quintile 2
— Quintile 3
— Quintile 4
— Quintile 5



P.11 Placed 18 year old applicants from Northern Ireland by POLAR2 quintile: 6 days after A level results day

Placed 18 year old applicants: entry rate

Applicant Status	POLAR2	2010	2011	2012	2013	2014
Placed	Quintile 1	12.8%	12.3%	12.7%	13.9%	15.6%
	Quintile 2	22.2%	21.8%	20.6%	23.9%	24.2%
	Quintile 3	30.5%	29.7%	27.9%	31.0%	31.7%
	Quintile 4	37.3%	37.1%	33.8%	37.8%	35.6%
	Quintile 5	45.2%	45.7%	42.7%	44.7%	42.6%

P.12 Placed 18 year old applicants from Northern Ireland by POLAR2 quintile: 6 days after A level results day

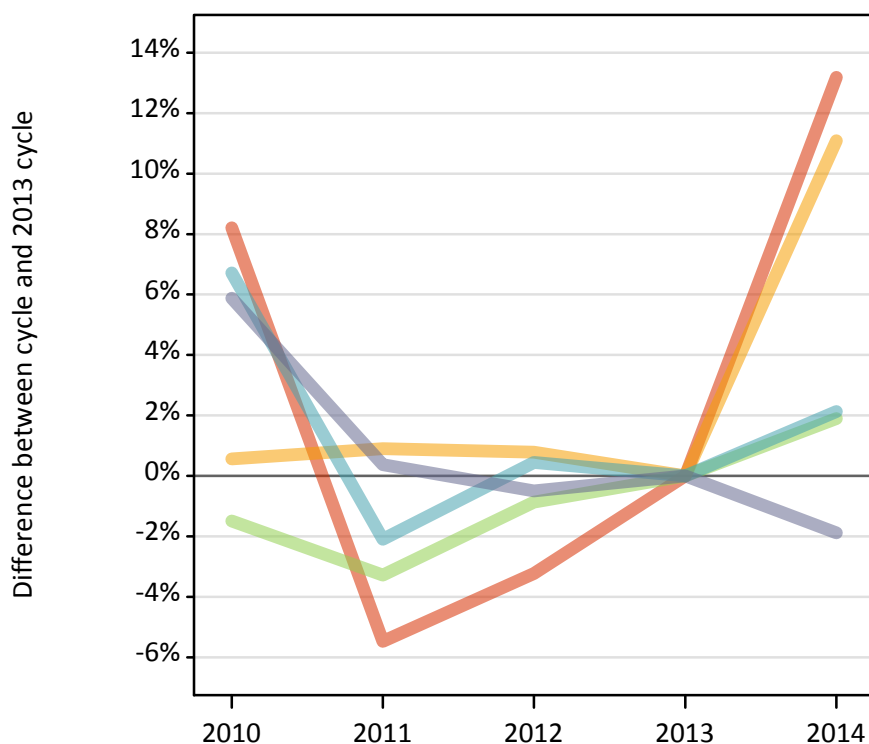
Placed 18 year old applicants: entry rate (indexed to 100 = Quintile 1)

Applicant Status	POLAR2	2010	2011	2012	2013	2014
Placed	Quintile 1	100	100	100	100	100
	Quintile 2	173	177	163	172	155
	Quintile 3	237	240	220	223	202
	Quintile 4	290	301	266	272	227
	Quintile 5	352	370	337	322	272

P.13 Placed 18 year old applicants from Scotland by POLAR2 quintile: 6 days after A level results day

Placed 18 year old applicants: change relative to 2013 cycle totals

Quintile 1
 Quintile 2
 Quintile 3
 Quintile 4
 Quintile 5



P.14 Placed 18 year old applicants from Scotland by POLAR2 quintile: 6 days after A level results day

Applicant Status	POLAR2	2010	2011	2012	2013	2014
Placed	Quintile 1	440	380	390	400	460
	Quintile 2	900	900	900	890	990
	Quintile 3	1,710	1,680	1,720	1,740	1,770
	Quintile 4	3,350	3,080	3,160	3,140	3,210
	Quintile 5	8,030	7,620	7,550	7,590	7,450

P.15 Placed 18 year old applicants from Scotland by POLAR2 quintile: 6 days after A level results day

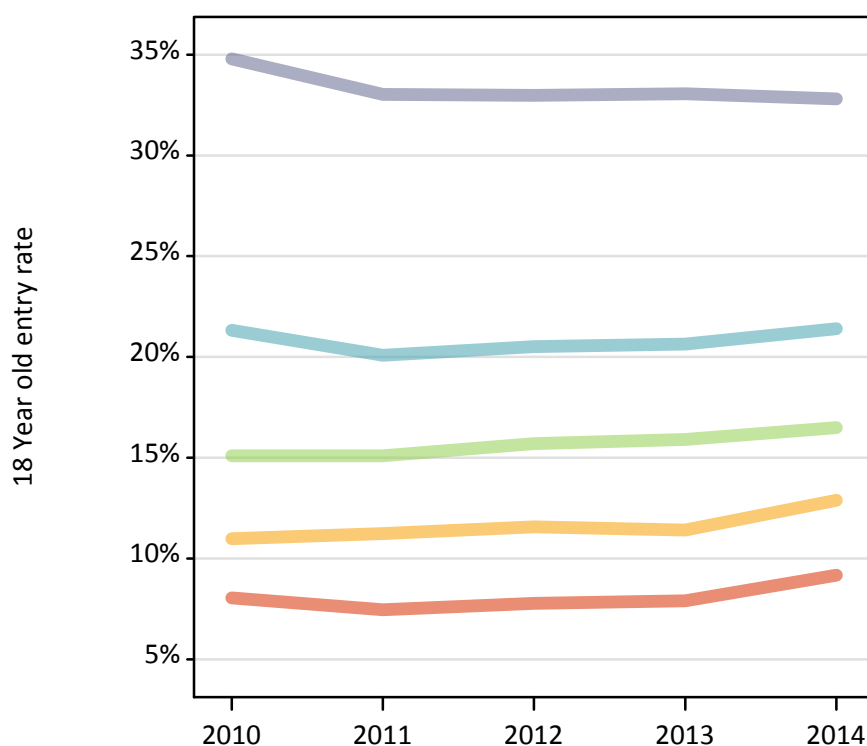
Placed 18 year old applicants: change relative to 2013 cycle totals

Applicant Status	POLAR2	2010	2011	2012	2013	2014
Placed	Quintile 1	8%	-5%	-3%	0%	13%
	Quintile 2	1%	1%	1%	0%	11%
	Quintile 3	-1%	-3%	-1%	0%	2%
	Quintile 4	7%	-2%	0%	0%	2%
	Quintile 5	6%	0%	-1%	0%	-2%

P.16 Placed 18 year old applicants from Scotland by POLAR2 quintile: 6 days after A level results day

Placed 18 year old applicants: entry rate

— Quintile 1
— Quintile 2
— Quintile 3
— Quintile 4
— Quintile 5



P.17 Placed 18 year old applicants from Scotland by POLAR2 quintile: 6 days after A level results day

Placed 18 year old applicants: entry rate

Applicant Status	POLAR2	2010	2011	2012	2013	2014
Placed	Quintile 1	8.0%	7.5%	7.8%	7.9%	9.2%
	Quintile 2	11.0%	11.2%	11.6%	11.4%	12.9%
	Quintile 3	15.1%	15.1%	15.7%	15.9%	16.5%
	Quintile 4	21.3%	20.1%	20.5%	20.6%	21.4%
	Quintile 5	34.8%	33.0%	33.0%	33.1%	32.8%

P.18 Placed 18 year old applicants from Scotland by POLAR2 quintile: 6 days after A level results day

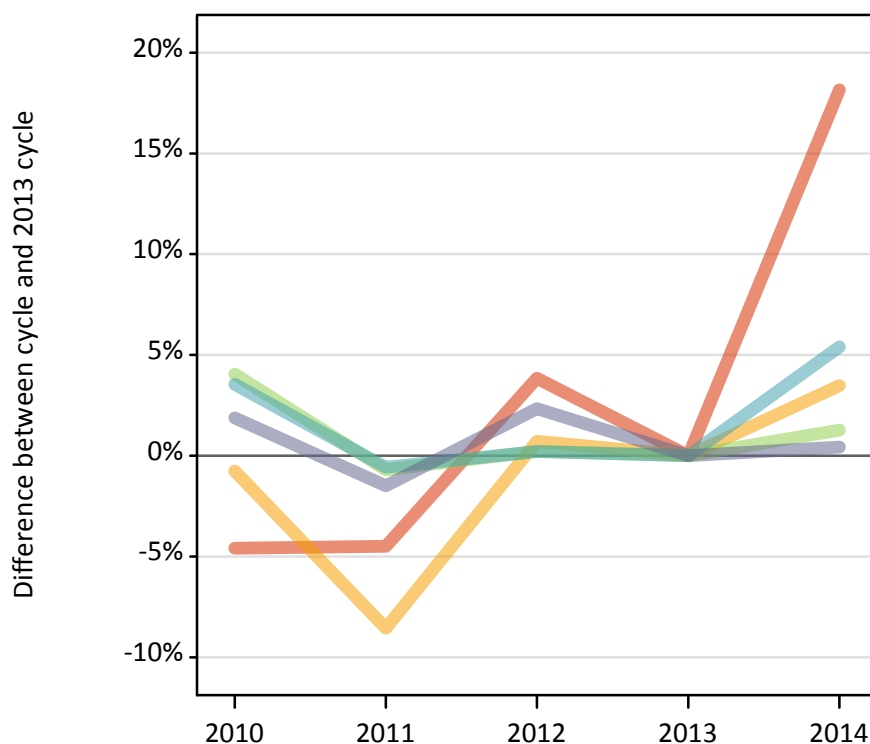
Placed 18 year old applicants: entry rate (indexed to 100 = Quintile 1)

Applicant Status	POLAR2	2010	2011	2012	2013	2014
Placed	Quintile 1	100	100	100	100	100
	Quintile 2	137	151	149	145	141
	Quintile 3	188	203	202	201	180
	Quintile 4	265	269	264	261	233
	Quintile 5	433	443	425	419	358

P.19 Placed 18 year old applicants from Wales by POLAR2 quintile: 6 days after A level results day

Placed 18 year old applicants: change relative to 2013 cycle totals

Quintile 1
 Quintile 2
 Quintile 3
 Quintile 4
 Quintile 5



P.20 Placed 18 year old applicants from Wales by POLAR2 quintile: 6 days after A level results day

Applicant Status	POLAR2	2010	2011	2012	2013	2014
Placed	Quintile 1	890	890	970	940	1,110
	Quintile 2	1,680	1,550	1,710	1,690	1,750
	Quintile 3	1,800	1,720	1,730	1,730	1,750
	Quintile 4	2,010	1,930	1,950	1,940	2,050
	Quintile 5	3,090	2,990	3,100	3,030	3,040

P.21 Placed 18 year old applicants from Wales by POLAR2 quintile: 6 days after A level results day

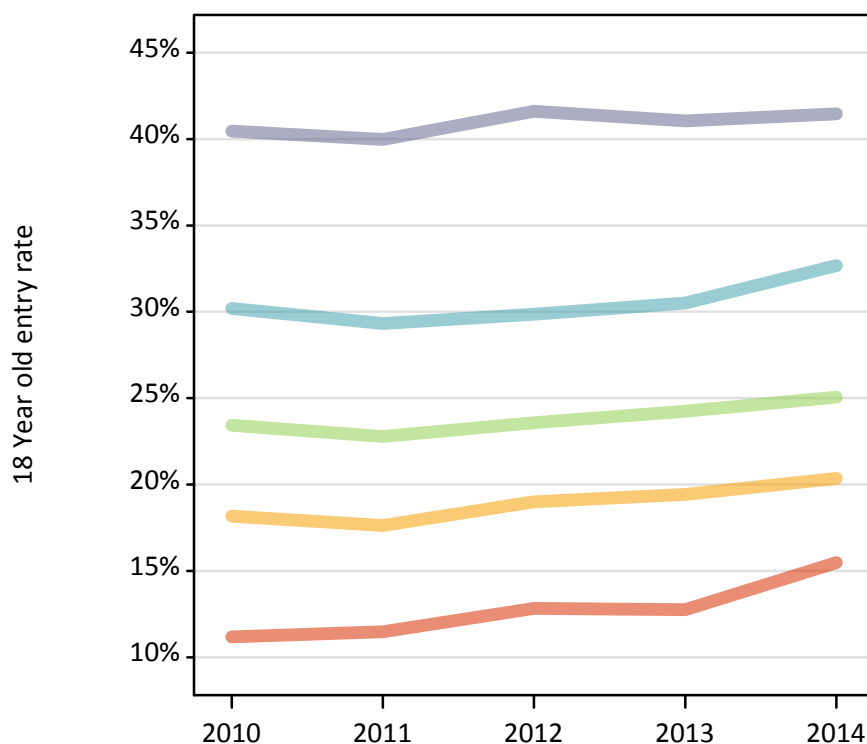
Placed 18 year old applicants: change relative to 2013 cycle totals

Applicant Status	POLAR2	2010	2011	2012	2013	2014
Placed	Quintile 1	-5%	-4%	4%	0%	18%
	Quintile 2	-1%	-9%	1%	0%	3%
	Quintile 3	4%	-1%	0%	0%	1%
	Quintile 4	4%	-1%	0%	0%	5%
	Quintile 5	2%	-1%	2%	0%	0%

P.22 Placed 18 year old applicants from Wales by POLAR2 quintile: 6 days after A level results day

Placed 18 year old applicants: entry rate

Quintile 1
 Quintile 2
 Quintile 3
 Quintile 4
 Quintile 5



P.23 Placed 18 year old applicants from Wales by POLAR2 quintile: 6 days after A level results day

Placed 18 year old applicants: entry rate

Applicant Status	POLAR2	2010	2011	2012	2013	2014
Placed	Quintile 1	11.2%	11.5%	12.8%	12.8%	15.5%
	Quintile 2	18.2%	17.6%	19.0%	19.4%	20.4%
	Quintile 3	23.4%	22.8%	23.6%	24.2%	25.1%
	Quintile 4	30.2%	29.3%	29.9%	30.5%	32.7%
	Quintile 5	40.5%	40.0%	41.6%	41.0%	41.5%

P.24 Placed 18 year old applicants from Wales by POLAR2 quintile: 6 days after A level results day

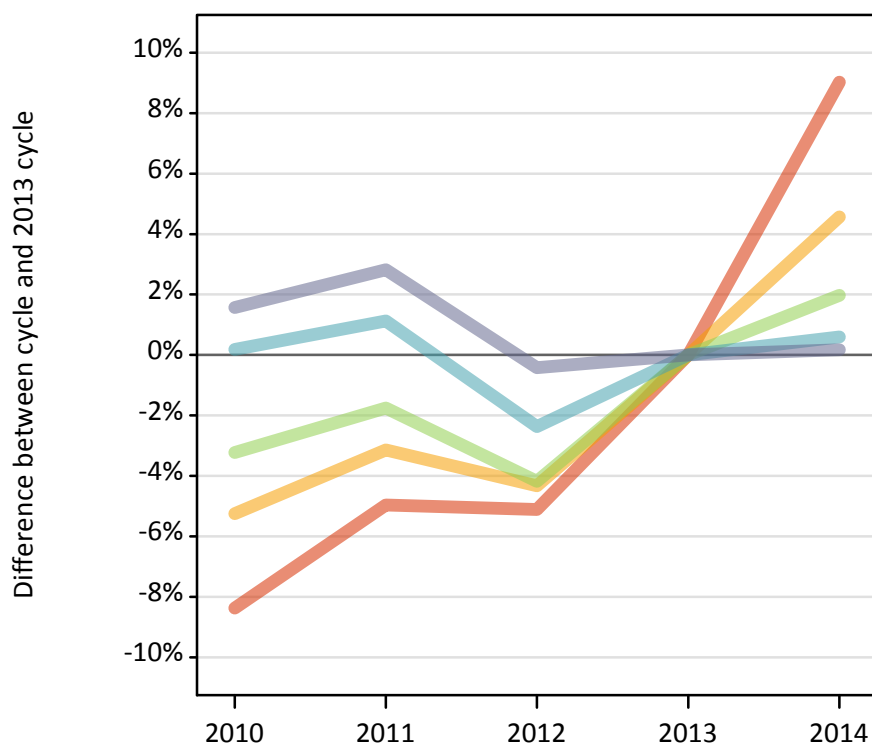
Placed 18 year old applicants: entry rate (indexed to 100 = Quintile 1)

Applicant Status	POLAR2	2010	2011	2012	2013	2014
Placed	Quintile 1	100	100	100	100	100
	Quintile 2	163	154	148	152	131
	Quintile 3	210	199	184	190	162
	Quintile 4	270	256	233	239	211
	Quintile 5	362	348	324	322	268

P.25 Placed 18 year old applicants from the UK by POLAR2 quintile: 6 days after A level results day

Placed 18 year old applicants: change relative to 2013 cycle totals

Quintile 1
 Quintile 2
 Quintile 3
 Quintile 4
 Quintile 5



P.26 Placed 18 year old applicants from the UK by POLAR2 quintile: 6 days after A level results day

Applicant Status	POLAR2	2010	2011	2012	2013	2014
Placed	Quintile 1	19,630	20,360	20,330	21,430	23,360
	Quintile 2	29,490	30,150	29,780	31,130	32,550
	Quintile 3	37,610	38,180	37,240	38,860	39,630
	Quintile 4	49,600	50,070	48,340	49,510	49,810
	Quintile 5	66,000	66,810	64,700	64,980	65,090

P.27 Placed 18 year old applicants from the UK by POLAR2 quintile: 6 days after A level results day

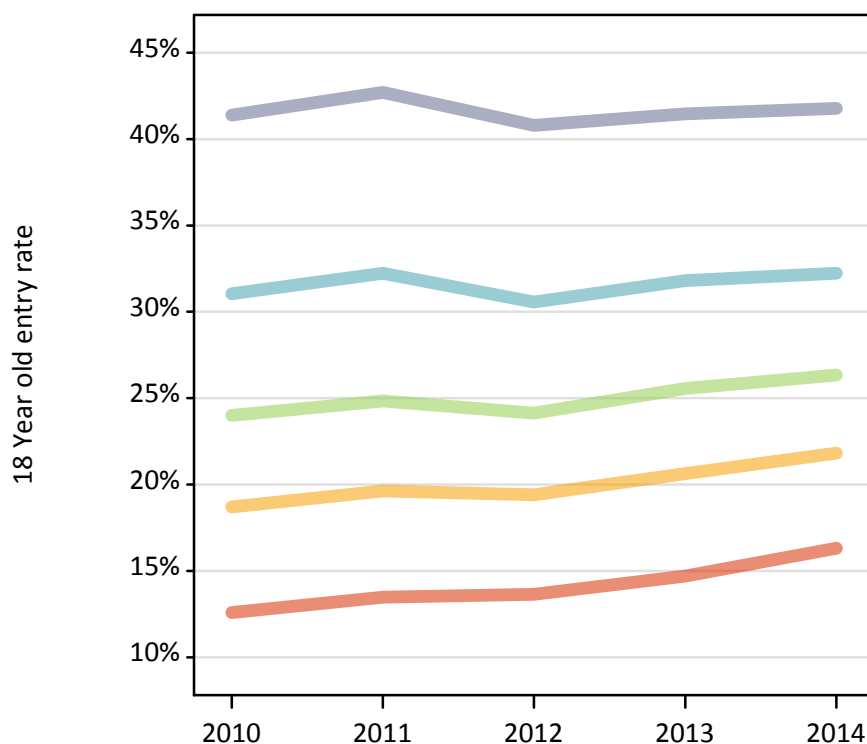
Placed 18 year old applicants: change relative to 2013 cycle totals

Applicant Status	POLAR2	2010	2011	2012	2013	2014
Placed	Quintile 1	-8%	-5%	-5%	0%	9%
	Quintile 2	-5%	-3%	-4%	0%	5%
	Quintile 3	-3%	-2%	-4%	0%	2%
	Quintile 4	0%	1%	-2%	0%	1%
	Quintile 5	2%	3%	-0%	0%	0%

P.28 Placed 18 year old applicants from the UK by POLAR2 quintile: 6 days after A level results day

Placed 18 year old applicants: entry rate

■ Quintile 1
■ Quintile 2
■ Quintile 3
■ Quintile 4
■ Quintile 5



P.29 Placed 18 year old applicants from the UK by POLAR2 quintile: 6 days after A level results day

Placed 18 year old applicants: entry rate

Applicant Status	POLAR2	2010	2011	2012	2013	2014
Placed	Quintile 1	12.6%	13.5%	13.6%	14.7%	16.3%
	Quintile 2	18.7%	19.6%	19.4%	20.6%	21.8%
	Quintile 3	24.0%	24.8%	24.1%	25.6%	26.3%
	Quintile 4	31.0%	32.2%	30.6%	31.8%	32.2%
	Quintile 5	41.4%	42.7%	40.8%	41.5%	41.8%

P.30 Placed 18 year old applicants from the UK by POLAR2 quintile: 6 days after A level results day

Placed 18 year old applicants: entry rate (indexed to 100 = Quintile 1)

Applicant Status	POLAR2	2010	2011	2012	2013	2014
Placed	Quintile 1	100	100	100	100	100
	Quintile 2	149	146	142	140	134
	Quintile 3	191	184	177	174	162
	Quintile 4	247	239	224	216	198
	Quintile 5	329	317	299	282	256