

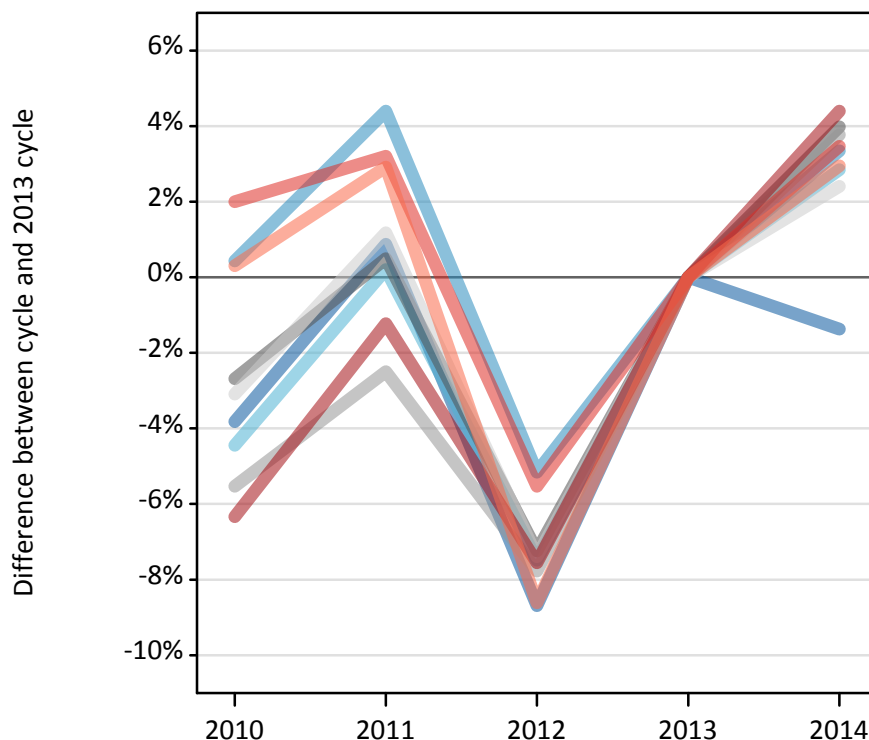
# Daily Clearing Analysis: Region

Analysis at 00:05 on Wednesday 20 August 2014 (6 days after A level results day)

R.1 Placed applicants by region of domicile: 6 days after A level results day

Placed applicants: change relative to 2013 cycle totals

- North East
- North West
- Yorkshire and The Humber
- East Midlands
- West Midlands
- East of England
- London
- South East
- South West



R.2 Placed applicants by region of domicile: 6 days after A level results day

| Applicant Status | Domicile                 | 2010    | 2011    | 2012    | 2013    | 2014    |
|------------------|--------------------------|---------|---------|---------|---------|---------|
| Placed           | North East               | 14,310  | 15,000  | 13,580  | 14,870  | 14,670  |
|                  | North West               | 44,870  | 46,650  | 42,370  | 44,680  | 46,170  |
|                  | Yorkshire and The Humber | 29,380  | 30,810  | 28,440  | 30,740  | 31,620  |
|                  | East Midlands            | 25,190  | 26,010  | 24,010  | 25,880  | 26,910  |
|                  | West Midlands            | 33,240  | 34,310  | 32,450  | 35,190  | 36,520  |
|                  | East of England          | 33,510  | 34,990  | 32,030  | 34,580  | 35,420  |
|                  | London                   | 55,340  | 58,360  | 54,620  | 59,090  | 61,690  |
|                  | South East               | 54,350  | 54,990  | 50,330  | 53,280  | 55,120  |
|                  | South West               | 30,770  | 31,570  | 28,030  | 30,670  | 31,580  |
|                  | (England total)          | 320,950 | 332,680 | 305,870 | 328,990 | 339,690 |
|                  | Scotland                 | 27,690  | 27,410  | 27,250  | 27,800  | 28,660  |
|                  | Northern Ireland         | 12,560  | 12,810  | 11,860  | 13,210  | 13,200  |
|                  | Wales                    | 16,630  | 16,490  | 17,200  | 17,400  | 18,150  |
|                  | UK                       | 377,830 | 389,400 | 362,170 | 387,400 | 399,700 |



### R.3 Placed applicants by region of domicile: 6 days after A level results day

Placed applicants: change relative to 2013 cycle totals

| Applicant Status | Domicile                 | 2010 | 2011 | 2012 | 2013 | 2014 |
|------------------|--------------------------|------|------|------|------|------|
| Placed           | North East               | -4%  | 1%   | -9%  | 0%   | -1%  |
|                  | North West               | 0%   | 4%   | -5%  | 0%   | 3%   |
|                  | Yorkshire and The Humber | -4%  | 0%   | -7%  | 0%   | 3%   |
|                  | East Midlands            | -3%  | 0%   | -7%  | 0%   | 4%   |
|                  | West Midlands            | -6%  | -3%  | -8%  | 0%   | 4%   |
|                  | East of England          | -3%  | 1%   | -7%  | 0%   | 2%   |
|                  | London                   | -6%  | -1%  | -8%  | 0%   | 4%   |
|                  | South East               | 2%   | 3%   | -6%  | 0%   | 3%   |
|                  | South West               | 0%   | 3%   | -9%  | 0%   | 3%   |
|                  | (England total)          | -2%  | 1%   | -7%  | 0%   | 3%   |
|                  | Scotland                 | -0%  | -1%  | -2%  | 0%   | 3%   |
|                  | Northern Ireland         | -5%  | -3%  | -10% | 0%   | -0%  |
|                  | Wales                    | -4%  | -5%  | -1%  | 0%   | 4%   |
|                  | UK                       | -2%  | 1%   | -7%  | 0%   | 3%   |

### R.4 Placed applicants by region of domicile: 6 days after A level results day

Placed applicants: absolute change relative to 2013 cycle totals

| Applicant Status | Domicile                 | 2010   | 2011  | 2012    | 2013 | 2014   |
|------------------|--------------------------|--------|-------|---------|------|--------|
| Placed           | North East               | -570   | 130   | -1,290  | 0    | -200   |
|                  | North West               | 190    | 1,970 | -2,310  | 0    | 1,490  |
|                  | Yorkshire and The Humber | -1,370 | 60    | -2,300  | 0    | 880    |
|                  | East Midlands            | -700   | 130   | -1,880  | 0    | 1,030  |
|                  | West Midlands            | -1,950 | -880  | -2,740  | 0    | 1,330  |
|                  | East of England          | -1,070 | 410   | -2,560  | 0    | 830    |
|                  | London                   | -3,740 | -730  | -4,460  | 0    | 2,600  |
|                  | South East               | 1,070  | 1,710 | -2,950  | 0    | 1,850  |
|                  | South West               | 90     | 900   | -2,640  | 0    | 910    |
|                  | (England total)          | -8,040 | 3,690 | -23,120 | 0    | 10,710 |
|                  | Scotland                 | -110   | -390  | -560    | 0    | 860    |
|                  | Northern Ireland         | -660   | -400  | -1,360  | 0    | -20    |
|                  | Wales                    | -770   | -910  | -200    | 0    | 750    |
|                  | UK                       | -9,570 | 1,990 | -25,230 | 0    | 12,300 |



## R.5 Placed 18 year old applicants by region of domicile: 6 days after A level results day

Placed 18 year old applicants: change relative to 2013 cycle totals



## R.6 Placed 18 year old applicants by region of domicile: 6 days after A level results day

| Applicant Status | Domicile                 | 2010    | 2011    | 2012    | 2013    | 2014    |
|------------------|--------------------------|---------|---------|---------|---------|---------|
| Placed           | North East               | 7,810   | 7,940   | 7,430   | 7,930   | 7,750   |
|                  | North West               | 25,010  | 25,830  | 24,670  | 24,930  | 25,750  |
|                  | Yorkshire and The Humber | 15,940  | 16,650  | 16,220  | 17,010  | 17,750  |
|                  | East Midlands            | 14,110  | 14,390  | 14,000  | 14,650  | 14,880  |
|                  | West Midlands            | 17,650  | 18,420  | 18,230  | 19,140  | 19,940  |
|                  | East of England          | 19,450  | 20,450  | 19,730  | 20,620  | 21,160  |
|                  | London                   | 26,480  | 28,610  | 28,350  | 30,440  | 31,620  |
|                  | South East               | 29,990  | 30,540  | 30,230  | 30,860  | 31,690  |
|                  | South West               | 15,360  | 16,180  | 15,210  | 15,720  | 16,030  |
|                  | (England total)          | 171,800 | 179,000 | 174,060 | 181,290 | 186,570 |
|                  | Scotland                 | 14,520  | 13,870  | 13,950  | 14,040  | 14,260  |
|                  | Northern Ireland         | 8,270   | 8,130   | 7,650   | 8,250   | 8,020   |
|                  | Wales                    | 9,520   | 9,150   | 9,560   | 9,480   | 9,840   |
|                  | UK                       | 204,110 | 210,150 | 205,210 | 213,060 | 218,680 |



## R.7 Placed 18 year old applicants by region of domicile: 6 days after A level results day

Placed 18 year old applicants: change relative to 2013 cycle totals

| Applicant Status | Domicile                 | 2010 | 2011 | 2012 | 2013 | 2014 |
|------------------|--------------------------|------|------|------|------|------|
| Placed           | North East               | -2%  | 0%   | -6%  | 0%   | -2%  |
|                  | North West               | 0%   | 4%   | -1%  | 0%   | 3%   |
|                  | Yorkshire and The Humber | -6%  | -2%  | -5%  | 0%   | 4%   |
|                  | East Midlands            | -4%  | -2%  | -4%  | 0%   | 2%   |
|                  | West Midlands            | -8%  | -4%  | -5%  | 0%   | 4%   |
|                  | East of England          | -6%  | -1%  | -4%  | 0%   | 3%   |
|                  | London                   | -13% | -6%  | -7%  | 0%   | 4%   |
|                  | South East               | -3%  | -1%  | -2%  | 0%   | 3%   |
|                  | South West               | -2%  | 3%   | -3%  | 0%   | 2%   |
|                  | (England total)          | -5%  | -1%  | -4%  | 0%   | 3%   |
|                  | Scotland                 | 3%   | -1%  | -1%  | 0%   | 2%   |
|                  | Northern Ireland         | 0%   | -1%  | -7%  | 0%   | -3%  |
|                  | Wales                    | 0%   | -3%  | 1%   | 0%   | 4%   |
|                  | UK                       | -4%  | -1%  | -4%  | 0%   | 3%   |

## R.8 Placed 18 year old applicants by region of domicile: 6 days after A level results day

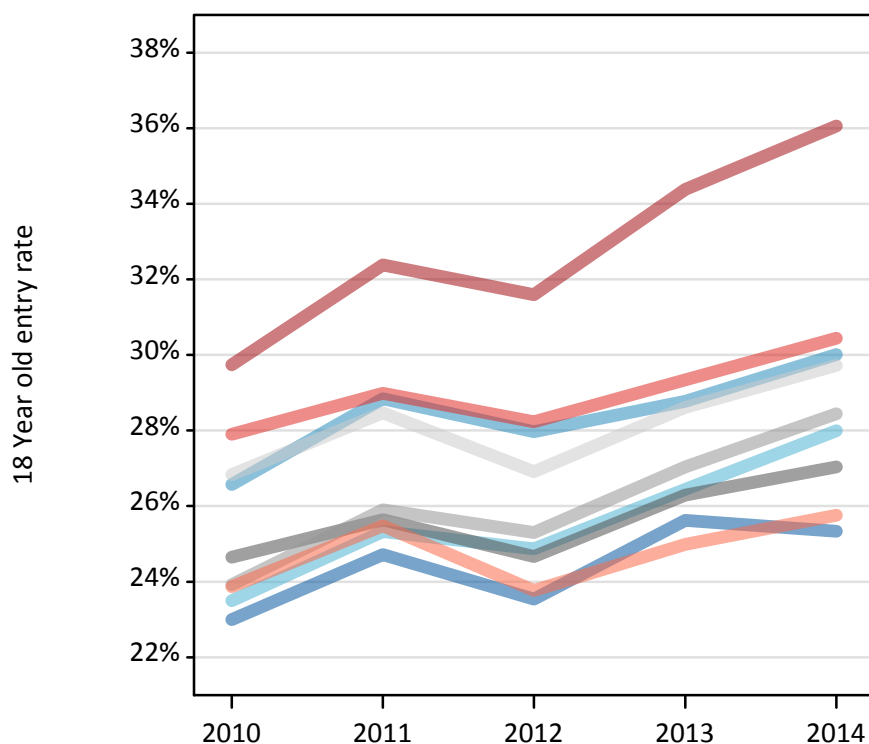
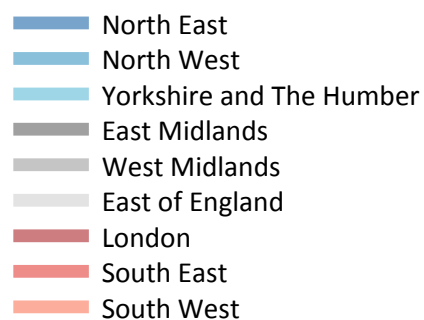
Placed 18 year old applicants: absolute change relative to 2013 cycle totals

| Applicant Status | Domicile                 | 2010   | 2011   | 2012   | 2013 | 2014  |
|------------------|--------------------------|--------|--------|--------|------|-------|
| Placed           | North East               | -130   | 0      | -510   | 0    | -180  |
|                  | North West               | 70     | 890    | -260   | 0    | 820   |
|                  | Yorkshire and The Humber | -1,070 | -360   | -800   | 0    | 730   |
|                  | East Midlands            | -540   | -260   | -650   | 0    | 230   |
|                  | West Midlands            | -1,490 | -720   | -910   | 0    | 800   |
|                  | East of England          | -1,160 | -170   | -890   | 0    | 540   |
|                  | London                   | -3,960 | -1,830 | -2,080 | 0    | 1,180 |
|                  | South East               | -870   | -320   | -630   | 0    | 830   |
|                  | South West               | -360   | 460    | -510   | 0    | 320   |
|                  | (England total)          | -9,500 | -2,290 | -7,230 | 0    | 5,270 |
|                  | Scotland                 | 480    | -170   | -90    | 0    | 220   |
|                  | Northern Ireland         | 30     | -120   | -600   | 0    | -220  |
|                  | Wales                    | 50     | -330   | 80     | 0    | 360   |
|                  | UK                       | -8,940 | -2,910 | -7,850 | 0    | 5,630 |



### R.9 Placed 18 year old applicants by region of domicile: 6 days after A level results day

Placed 18 year old applicants: entry rate



### R.10 Placed 18 year old applicants by region of domicile: 6 days after A level results day

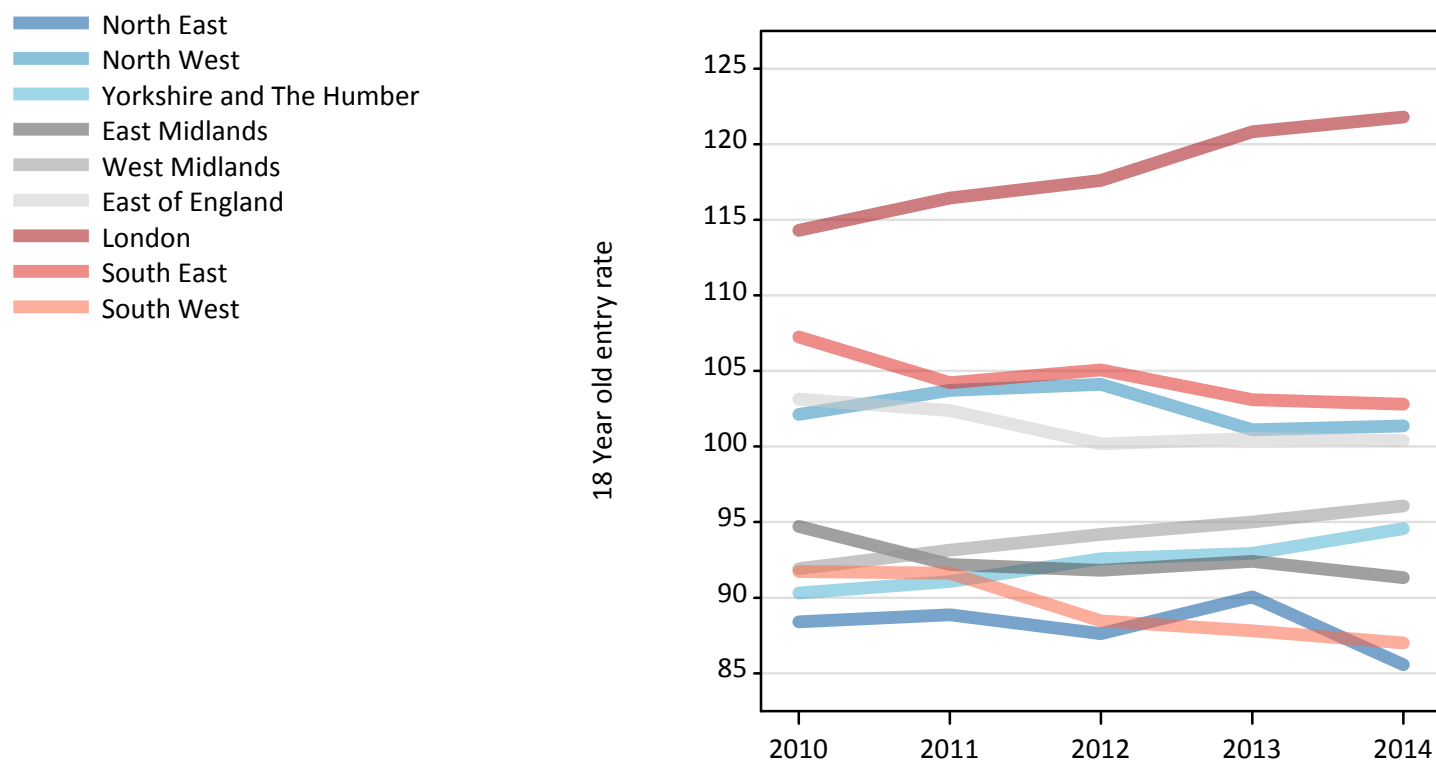
Placed 18 year old applicants: entry rate

| Applicant Status | Domicile                 | 2010  | 2011  | 2012  | 2013  | 2014  |
|------------------|--------------------------|-------|-------|-------|-------|-------|
| Placed           | North East               | 23.0% | 24.7% | 23.5% | 25.6% | 25.3% |
|                  | North West               | 26.6% | 28.8% | 28.0% | 28.8% | 30.0% |
|                  | Yorkshire and The Humber | 23.5% | 25.3% | 24.9% | 26.4% | 28.0% |
|                  | East Midlands            | 24.6% | 25.6% | 24.7% | 26.3% | 27.0% |
|                  | West Midlands            | 23.9% | 25.9% | 25.3% | 27.0% | 28.4% |
|                  | East of England          | 26.8% | 28.5% | 26.9% | 28.6% | 29.7% |
|                  | London                   | 29.7% | 32.4% | 31.6% | 34.4% | 36.1% |
|                  | South East               | 27.9% | 29.0% | 28.2% | 29.3% | 30.4% |
|                  | South West               | 23.9% | 25.5% | 23.8% | 25.0% | 25.8% |
|                  | (England total)          | 26.0% | 27.8% | 26.9% | 28.5% | 29.6% |
|                  | Scotland                 | 22.7% | 22.1% | 22.5% | 22.8% | 23.3% |
|                  | Northern Ireland         | 32.4% | 32.5% | 30.4% | 33.6% | 33.1% |
|                  | Wales                    | 23.9% | 23.7% | 24.8% | 25.1% | 26.2% |
|                  | UK                       | 25.9% | 27.3% | 26.5% | 28.0% | 29.0% |



### R.11 Placed 18 year old applicants by region of domicile: 6 days after A level results day

Placed 18 year old applicants: entry rates (indexed to 100 = England)



### R.12 Placed 18 year old applicants by region of domicile: 6 days after A level results day

Placed 18 year old applicants: entry rate (indexed to 100 = England)

| Applicant Status | Domicile                 | 2010 | 2011 | 2012 | 2013 | 2014 |
|------------------|--------------------------|------|------|------|------|------|
| Placed           | North East               | 88   | 89   | 88   | 90   | 86   |
|                  | North West               | 102  | 104  | 104  | 101  | 101  |
|                  | Yorkshire and The Humber | 90   | 91   | 93   | 93   | 95   |
|                  | East Midlands            | 95   | 92   | 92   | 92   | 91   |
|                  | West Midlands            | 92   | 93   | 94   | 95   | 96   |
|                  | East of England          | 103  | 102  | 100  | 101  | 100  |
|                  | London                   | 114  | 116  | 118  | 121  | 122  |
|                  | South East               | 107  | 104  | 105  | 103  | 103  |
|                  | South West               | 92   | 92   | 88   | 88   | 87   |
|                  | (England total)          | 100  | 100  | 100  | 100  | 100  |