

Daily Clearing Analysis: Sex

Analysis at 00:05 on Wednesday 20 August 2014 (6 days after A level results day)

S.1 Placed applicants from all domiciles by sex: 6 days after A level results day

Placed applicants: change relative to 2013 cycle totals

Men
Women



S.2 Placed applicants from all domiciles by sex: 6 days after A level results day

| Applicant Status | Sex | 2010 | 2011 | 2012 | 2013 | 2014 |
|------------------|-------|---------|---------|---------|---------|---------|
| Placed | Men | 190,630 | 197,650 | 182,280 | 195,860 | 200,630 |
| | Women | 235,740 | 242,190 | 228,280 | 243,080 | 254,090 |
| | All | 426,380 | 439,840 | 410,560 | 438,940 | 454,720 |

S.3 Placed applicants from all domiciles by sex: 6 days after A level results day

Placed applicants: change relative to 2013 cycle totals

| Applicant Status | Sex | 2010 | 2011 | 2012 | 2013 | 2014 |
|------------------|-------|------|------|------|------|------|
| Placed | Men | -3% | 1% | -7% | 0% | 2% |
| | Women | -3% | -0% | -6% | 0% | 5% |
| | All | -3% | 0% | -6% | 0% | 4% |

S.4 Placed applicants from all domiciles by sex: 6 days after A level results day

Placed applicants: absolute change relative to 2013 cycle totals

| Applicant Status | Sex | 2010 | 2011 | 2012 | 2013 | 2014 |
|------------------|-------|---------|-------|---------|------|--------|
| Placed | Men | -5,230 | 1,780 | -13,580 | 0 | 4,770 |
| | Women | -7,340 | -890 | -14,800 | 0 | 11,010 |
| | All | -12,570 | 900 | -28,380 | 0 | 15,780 |

S.5 Placed applicants from the UK by sex: 6 days after A level results day

Placed applicants: change relative to 2013 cycle totals

Men
Women



S.6 Placed applicants from the UK by sex: 6 days after A level results day

| Applicant Status | Sex | 2010 | 2011 | 2012 | 2013 | 2014 |
|------------------|-------|---------|---------|---------|---------|---------|
| Placed | Men | 167,440 | 174,100 | 159,970 | 172,170 | 175,920 |
| | Women | 210,390 | 215,290 | 202,200 | 215,240 | 223,780 |
| | All | 377,830 | 389,400 | 362,170 | 387,400 | 399,700 |

S.7 Placed applicants from the UK by sex: 6 days after A level results day

Placed applicants: change relative to 2013 cycle totals

| Applicant Status | Sex | 2010 | 2011 | 2012 | 2013 | 2014 |
|------------------|-------|------|------|------|------|------|
| Placed | Men | -3% | 1% | -7% | 0% | 2% |
| | Women | -2% | 0% | -6% | 0% | 4% |
| | All | -2% | 1% | -7% | 0% | 3% |

S.8 Placed applicants from the UK by sex: 6 days after A level results day

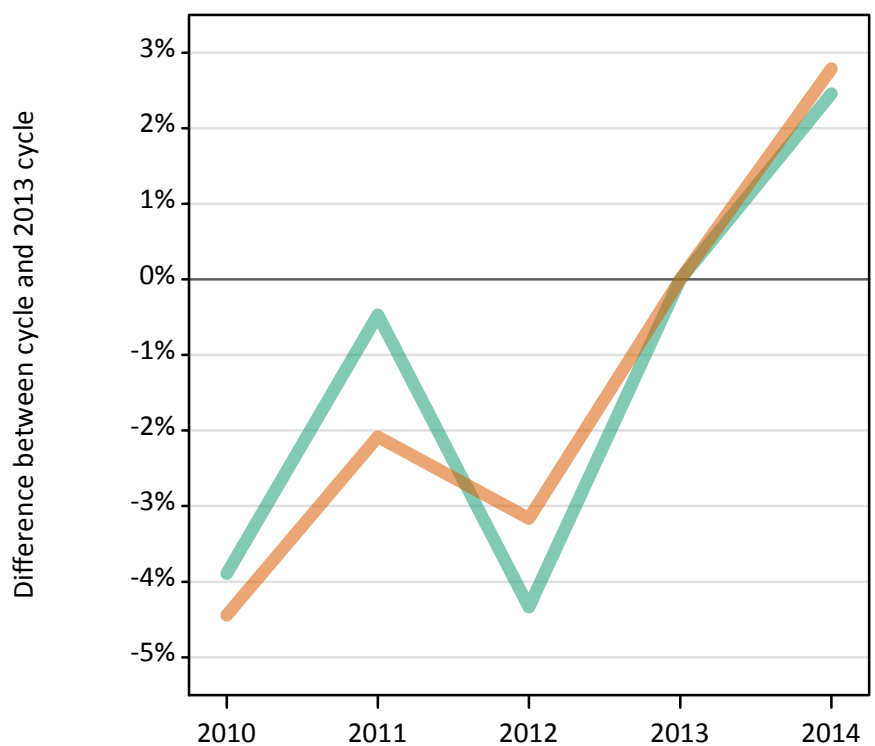
Placed applicants: absolute change relative to 2013 cycle totals

| Applicant Status | Sex | 2010 | 2011 | 2012 | 2013 | 2014 |
|------------------|-------|--------|-------|---------|------|--------|
| Placed | Men | -4,730 | 1,940 | -12,190 | 0 | 3,750 |
| | Women | -4,850 | 60 | -13,040 | 0 | 8,550 |
| | All | -9,570 | 1,990 | -25,230 | 0 | 12,300 |

S.9 Placed 18 year old applicants from the UK by sex: 6 days after A level results day

Placed 18 year old applicants: change relative to 2013 cycle totals

Men
Women



S.10 Placed 18 year old applicants from the UK by sex: 6 days after A level results day

| Applicant Status | Sex | 2010 | 2011 | 2012 | 2013 | 2014 |
|------------------|-------|---------|---------|---------|---------|---------|
| Placed | Men | 91,100 | 94,340 | 90,680 | 94,790 | 97,120 |
| | Women | 113,020 | 115,810 | 114,530 | 118,270 | 121,570 |
| | All | 204,110 | 210,150 | 205,210 | 213,060 | 218,680 |

S.11 Placed 18 year old applicants from the UK by sex: 6 days after A level results day

Placed 18 year old applicants: change relative to 2013 cycle totals

| Applicant Status | Sex | 2010 | 2011 | 2012 | 2013 | 2014 |
|------------------|-------|------|------|------|------|------|
| Placed | Men | -4% | -0% | -4% | 0% | 2% |
| | Women | -4% | -2% | -3% | 0% | 3% |
| | All | -4% | -1% | -4% | 0% | 3% |

S.12 Placed 18 year old applicants from the UK by sex: 6 days after A level results day

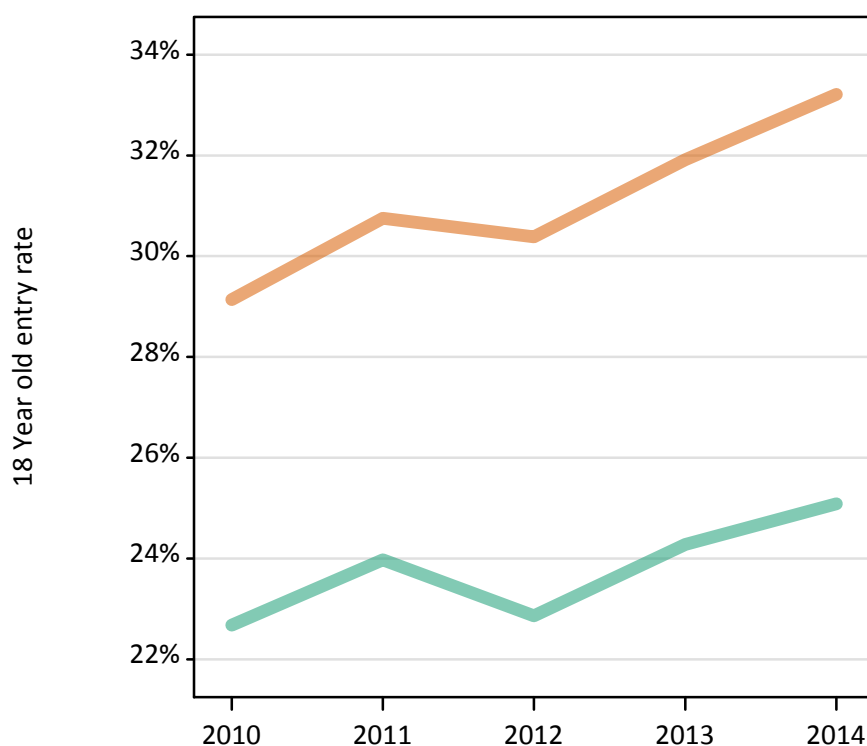
Placed 18 year old applicants: absolute change relative to 2013 cycle totals

| Applicant Status | Sex | 2010 | 2011 | 2012 | 2013 | 2014 |
|------------------|-------|--------|--------|--------|------|-------|
| Placed | Men | -3,690 | -440 | -4,110 | 0 | 2,330 |
| | Women | -5,260 | -2,460 | -3,740 | 0 | 3,300 |
| | All | -8,940 | -2,910 | -7,850 | 0 | 5,630 |

S.13 Placed 18 year old applicants from the UK by sex: 6 days after A level results day

Placed 18 year old applicants: entry rate

Men
Women



S.14 Placed 18 year old applicants from the UK by sex: 6 days after A level results day

Placed 18 year old applicants: entry rate

| Applicant Status | Sex | 2010 | 2011 | 2012 | 2013 | 2014 |
|------------------|-------|-------|-------|-------|-------|-------|
| Placed | Men | 22.7% | 24.0% | 22.9% | 24.3% | 25.1% |
| | Women | 29.1% | 30.8% | 30.4% | 31.9% | 33.2% |
| | All | 25.9% | 27.3% | 26.5% | 28.0% | 29.0% |

S.15 Placed 18 year old applicants from the UK by sex: 6 days after A level results day

Placed 18 year old applicants: entry rate (indexed to 100 = Men)

| Applicant Status | Sex | 2010 | 2011 | 2012 | 2013 | 2014 |
|------------------|-------|------|------|------|------|------|
| Placed | Men | 100 | 100 | 100 | 100 | 100 |
| | Women | 128 | 128 | 133 | 131 | 132 |

S.16 Placed applicants from England by sex: 6 days after A level results day

Placed applicants: change relative to 2013 cycle totals

Men
Women



S.17 Placed applicants from England by sex: 6 days after A level results day

| Applicant Status | Sex | 2010 | 2011 | 2012 | 2013 | 2014 |
|------------------|-------|---------|---------|---------|---------|---------|
| Placed | Men | 142,890 | 149,570 | 135,790 | 146,900 | 150,420 |
| | Women | 178,060 | 183,110 | 170,080 | 182,090 | 189,280 |
| | All | 320,950 | 332,680 | 305,870 | 328,990 | 339,690 |

S.18 Placed applicants from England by sex: 6 days after A level results day

Placed applicants: change relative to 2013 cycle totals

| Applicant Status | Sex | 2010 | 2011 | 2012 | 2013 | 2014 |
|------------------|-------|------|------|------|------|------|
| Placed | Men | -3% | 2% | -8% | 0% | 2% |
| | Women | -2% | 1% | -7% | 0% | 4% |
| | All | -2% | 1% | -7% | 0% | 3% |

S.19 Placed applicants from England by sex: 6 days after A level results day

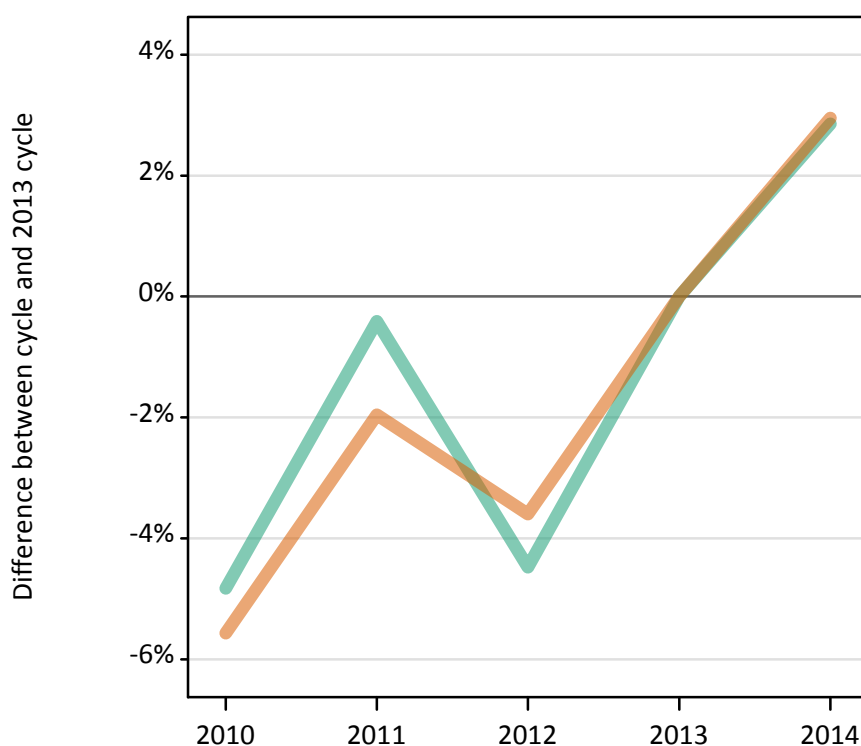
Placed applicants: absolute change relative to 2013 cycle totals

| Applicant Status | Sex | 2010 | 2011 | 2012 | 2013 | 2014 |
|------------------|-------|--------|-------|---------|------|--------|
| Placed | Men | -4,010 | 2,670 | -11,110 | 0 | 3,520 |
| | Women | -4,030 | 1,020 | -12,010 | 0 | 7,180 |
| | All | -8,040 | 3,690 | -23,120 | 0 | 10,710 |

S.20 Placed 18 year old applicants from England by sex: 6 days after A level results day

Placed 18 year old applicants: change relative to 2013 cycle totals

Men
Women



S.21 Placed 18 year old applicants from England by sex: 6 days after A level results day

| Applicant Status | Sex | 2010 | 2011 | 2012 | 2013 | 2014 |
|------------------|-------|---------|---------|---------|---------|---------|
| Placed | Men | 77,170 | 80,750 | 77,450 | 81,080 | 83,400 |
| | Women | 94,630 | 98,250 | 96,610 | 100,210 | 103,170 |
| | All | 171,800 | 179,000 | 174,060 | 181,290 | 186,570 |

S.22 Placed 18 year old applicants from England by sex: 6 days after A level results day

Placed 18 year old applicants: change relative to 2013 cycle totals

| Applicant Status | Sex | 2010 | 2011 | 2012 | 2013 | 2014 |
|------------------|-------|------|------|------|------|------|
| Placed | Men | -5% | -0% | -4% | 0% | 3% |
| | Women | -6% | -2% | -4% | 0% | 3% |
| | All | -5% | -1% | -4% | 0% | 3% |

S.23 Placed 18 year old applicants from England by sex: 6 days after A level results day

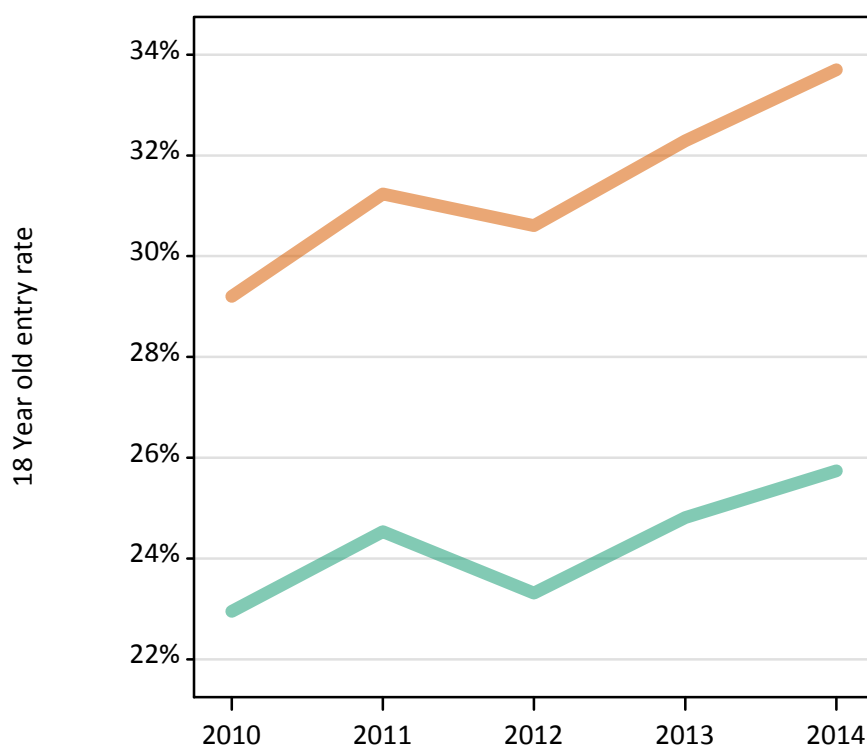
Placed 18 year old applicants: absolute change relative to 2013 cycle totals

| Applicant Status | Sex | 2010 | 2011 | 2012 | 2013 | 2014 |
|------------------|-------|--------|--------|--------|------|-------|
| Placed | Men | -3,910 | -330 | -3,630 | 0 | 2,320 |
| | Women | -5,580 | -1,960 | -3,610 | 0 | 2,960 |
| | All | -9,500 | -2,290 | -7,230 | 0 | 5,270 |

S.24 Placed 18 year old applicants from England by sex: 6 days after A level results day

Placed 18 year old applicants: entry rate

Men
Women



S.25 Placed 18 year old applicants from England by sex: 6 days after A level results day

Placed 18 year old applicants: entry rate

| Applicant Status | Sex | 2010 | 2011 | 2012 | 2013 | 2014 |
|------------------|-------|-------|-------|-------|-------|-------|
| Placed | Men | 23.0% | 24.5% | 23.3% | 24.8% | 25.7% |
| | Women | 29.2% | 31.2% | 30.6% | 32.3% | 33.7% |
| | All | 26.0% | 27.8% | 26.9% | 28.5% | 29.6% |

S.26 Placed 18 year old applicants from England by sex: 6 days after A level results day

Placed 18 year old applicants: entry rate (indexed to 100 = Men)

| Applicant Status | Sex | 2010 | 2011 | 2012 | 2013 | 2014 |
|------------------|-------|------|------|------|------|------|
| Placed | Men | 100 | 100 | 100 | 100 | 100 |
| | Women | 127 | 127 | 131 | 130 | 131 |

S.27 Placed applicants from Northern Ireland by sex: 6 days after A level results day

Placed applicants: change relative to 2013 cycle totals

Men
Women



S.28 Placed applicants from Northern Ireland by sex: 6 days after A level results day

| Applicant Status | Sex | 2010 | 2011 | 2012 | 2013 | 2014 |
|------------------|-------|--------|--------|--------|--------|--------|
| Placed | Men | 5,540 | 5,790 | 5,230 | 5,910 | 5,920 |
| | Women | 7,020 | 7,020 | 6,630 | 7,300 | 7,270 |
| | All | 12,560 | 12,810 | 11,860 | 13,210 | 13,200 |

S.29 Placed applicants from Northern Ireland by sex: 6 days after A level results day

Placed applicants: change relative to 2013 cycle totals

| Applicant Status | Sex | 2010 | 2011 | 2012 | 2013 | 2014 |
|------------------|-------|------|------|------|------|------|
| Placed | Men | -6% | -2% | -12% | 0% | 0% |
| | Women | -4% | -4% | -9% | 0% | -0% |
| | All | -5% | -3% | -10% | 0% | -0% |

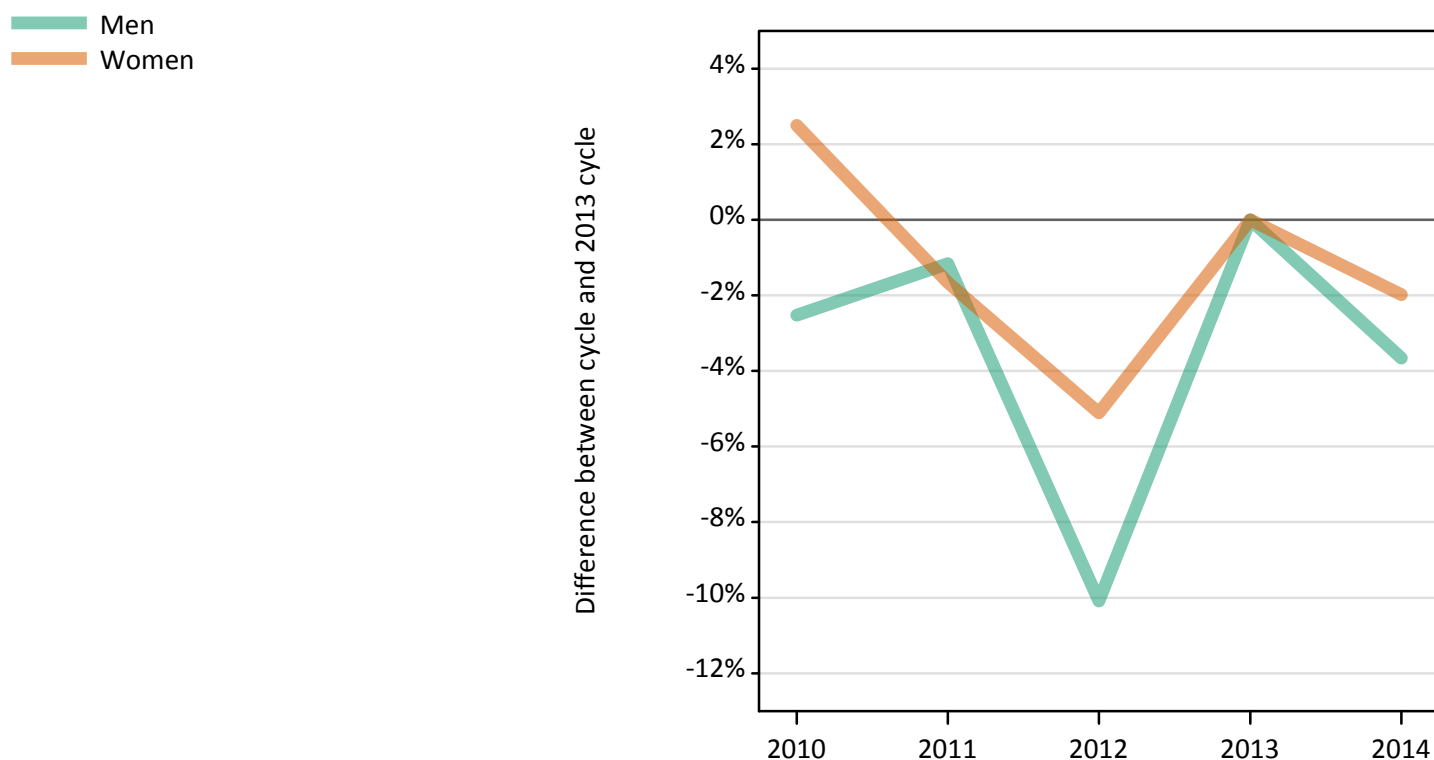
S.30 Placed applicants from Northern Ireland by sex: 6 days after A level results day

Placed applicants: absolute change relative to 2013 cycle totals

| Applicant Status | Sex | 2010 | 2011 | 2012 | 2013 | 2014 |
|------------------|-------|------|------|--------|------|------|
| Placed | Men | -370 | -120 | -680 | 0 | 10 |
| | Women | -280 | -280 | -670 | 0 | -30 |
| | All | -660 | -400 | -1,360 | 0 | -20 |

S.31 Placed 18 year old applicants from Northern Ireland by sex: 6 days after A level results day

Placed 18 year old applicants: change relative to 2013 cycle totals



S.32 Placed 18 year old applicants from Northern Ireland by sex: 6 days after A level results day

| Applicant Status | Sex | 2010 | 2011 | 2012 | 2013 | 2014 |
|------------------|-------|-------|-------|-------|-------|-------|
| Placed | Men | 3,520 | 3,570 | 3,250 | 3,610 | 3,480 |
| | Women | 4,750 | 4,560 | 4,400 | 4,640 | 4,550 |
| | All | 8,270 | 8,130 | 7,650 | 8,250 | 8,020 |

S.33 Placed 18 year old applicants from Northern Ireland by sex: 6 days after A level results day

Placed 18 year old applicants: change relative to 2013 cycle totals

| Applicant Status | Sex | 2010 | 2011 | 2012 | 2013 | 2014 |
|------------------|-------|------|------|------|------|------|
| Placed | Men | -3% | -1% | -10% | 0% | -4% |
| | Women | 3% | -2% | -5% | 0% | -2% |
| | All | 0% | -1% | -7% | 0% | -3% |

S.34 Placed 18 year old applicants from Northern Ireland by sex: 6 days after A level results day

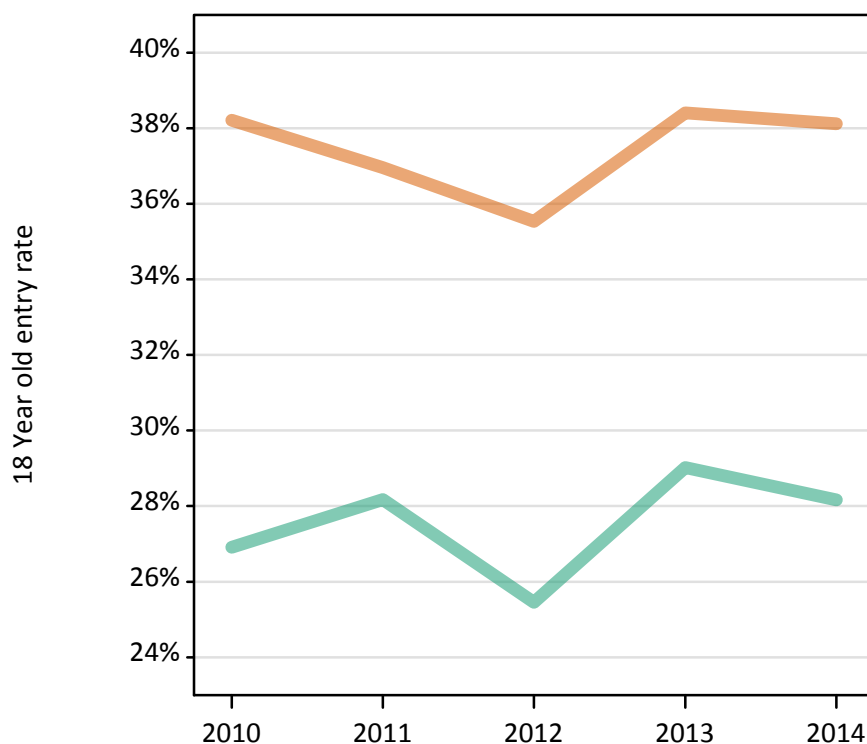
Placed 18 year old applicants: absolute change relative to 2013 cycle totals

| Applicant Status | Sex | 2010 | 2011 | 2012 | 2013 | 2014 |
|------------------|-------|------|------|------|------|------|
| Placed | Men | -90 | -40 | -360 | 0 | -130 |
| | Women | 120 | -80 | -240 | 0 | -90 |
| | All | 30 | -120 | -600 | 0 | -220 |

S.35 Placed 18 year old applicants from Northern Ireland by sex: 6 days after A level results day

Placed 18 year old applicants: entry rate

Men
Women



S.36 Placed 18 year old applicants from Northern Ireland by sex: 6 days after A level results day

Placed 18 year old applicants: entry rate

| Applicant Status | Sex | 2010 | 2011 | 2012 | 2013 | 2014 |
|------------------|-------|-------|-------|-------|-------|-------|
| Placed | Men | 26.9% | 28.2% | 25.5% | 29.0% | 28.2% |
| | Women | 38.2% | 37.0% | 35.5% | 38.4% | 38.1% |
| | All | 32.4% | 32.5% | 30.4% | 33.6% | 33.1% |

S.37 Placed 18 year old applicants from Northern Ireland by sex: 6 days after A level results day

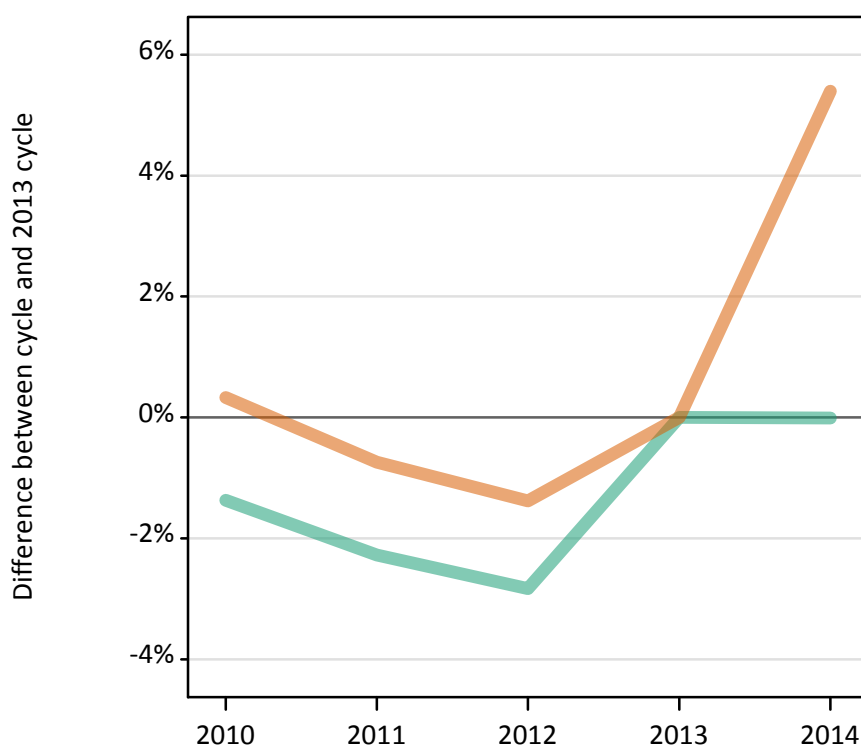
Placed 18 year old applicants: entry rate (indexed to 100 = Men)

| Applicant Status | Sex | 2010 | 2011 | 2012 | 2013 | 2014 |
|------------------|-------|------|------|------|------|------|
| Placed | Men | 100 | 100 | 100 | 100 | 100 |
| | Women | 142 | 131 | 140 | 132 | 135 |

S.38 Placed applicants from Scotland by sex: 6 days after A level results day

Placed applicants: change relative to 2013 cycle totals

Men
Women



S.39 Placed applicants from Scotland by sex: 6 days after A level results day

| Applicant Status | Sex | 2010 | 2011 | 2012 | 2013 | 2014 |
|------------------|-------|--------|--------|--------|--------|--------|
| Placed | Men | 11,730 | 11,630 | 11,560 | 11,900 | 11,900 |
| | Women | 15,960 | 15,790 | 15,690 | 15,910 | 16,770 |
| | All | 27,690 | 27,410 | 27,250 | 27,800 | 28,660 |

S.40 Placed applicants from Scotland by sex: 6 days after A level results day

Placed applicants: change relative to 2013 cycle totals

| Applicant Status | Sex | 2010 | 2011 | 2012 | 2013 | 2014 |
|------------------|-------|------|------|------|------|------|
| Placed | Men | -1% | -2% | -3% | 0% | -0% |
| | Women | 0% | -1% | -1% | 0% | 5% |
| | All | -0% | -1% | -2% | 0% | 3% |

S.41 Placed applicants from Scotland by sex: 6 days after A level results day

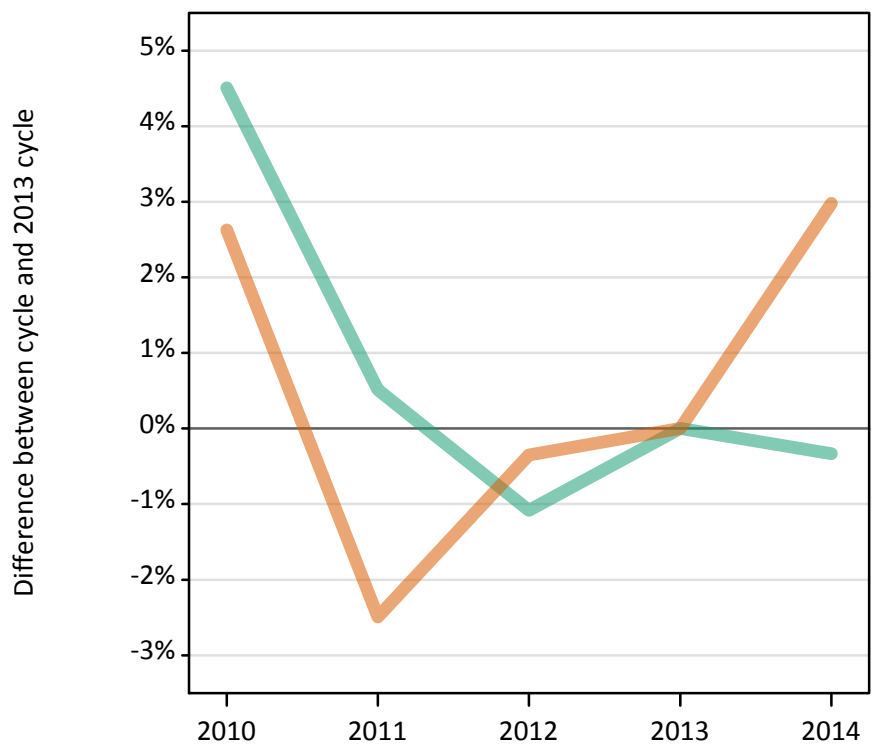
Placed applicants: absolute change relative to 2013 cycle totals

| Applicant Status | Sex | 2010 | 2011 | 2012 | 2013 | 2014 |
|------------------|-------|------|------|------|------|------|
| Placed | Men | -160 | -270 | -340 | 0 | 0 |
| | Women | 50 | -120 | -220 | 0 | 860 |
| | All | -110 | -390 | -560 | 0 | 860 |

S.42 Placed 18 year old applicants from Scotland by sex: 6 days after A level results day

Placed 18 year old applicants: change relative to 2013 cycle totals

Men
Women



S.43 Placed 18 year old applicants from Scotland by sex: 6 days after A level results day

| Applicant Status | Sex | 2010 | 2011 | 2012 | 2013 | 2014 |
|------------------|-------|--------|--------|--------|--------|--------|
| Placed | Men | 6,280 | 6,040 | 5,950 | 6,010 | 5,990 |
| | Women | 8,240 | 7,830 | 8,000 | 8,030 | 8,260 |
| | All | 14,520 | 13,870 | 13,950 | 14,040 | 14,260 |

S.44 Placed 18 year old applicants from Scotland by sex: 6 days after A level results day

Placed 18 year old applicants: change relative to 2013 cycle totals

| Applicant Status | Sex | 2010 | 2011 | 2012 | 2013 | 2014 |
|------------------|-------|------|------|------|------|------|
| Placed | Men | 5% | 1% | -1% | 0% | -0% |
| | Women | 3% | -2% | -0% | 0% | 3% |
| | All | 3% | -1% | -1% | 0% | 2% |

S.45 Placed 18 year old applicants from Scotland by sex: 6 days after A level results day

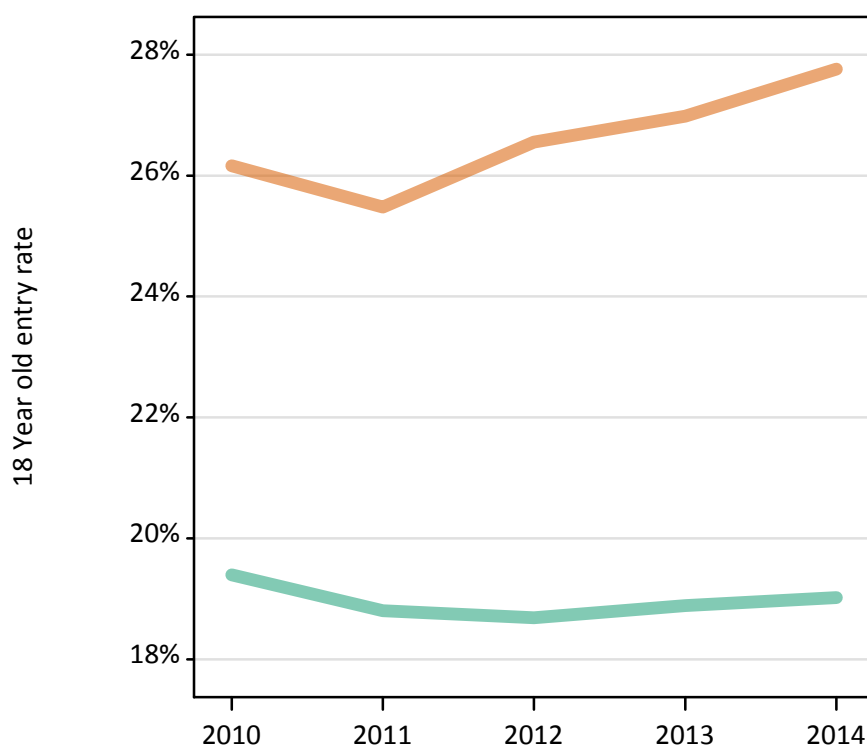
Placed 18 year old applicants: absolute change relative to 2013 cycle totals

| Applicant Status | Sex | 2010 | 2011 | 2012 | 2013 | 2014 |
|------------------|-------|------|------|------|------|------|
| Placed | Men | 270 | 30 | -70 | 0 | -20 |
| | Women | 210 | -200 | -30 | 0 | 240 |
| | All | 480 | -170 | -90 | 0 | 220 |

S.46 Placed 18 year old applicants from Scotland by sex: 6 days after A level results day

Placed 18 year old applicants: entry rate

Men
Women



S.47 Placed 18 year old applicants from Scotland by sex: 6 days after A level results day

Placed 18 year old applicants: entry rate

| Applicant Status | Sex | 2010 | 2011 | 2012 | 2013 | 2014 |
|------------------|-------|-------|-------|-------|-------|-------|
| Placed | Men | 19.4% | 18.8% | 18.7% | 18.9% | 19.0% |
| | Women | 26.2% | 25.5% | 26.6% | 27.0% | 27.8% |
| | All | 22.7% | 22.1% | 22.5% | 22.8% | 23.3% |

S.48 Placed 18 year old applicants from Scotland by sex: 6 days after A level results day

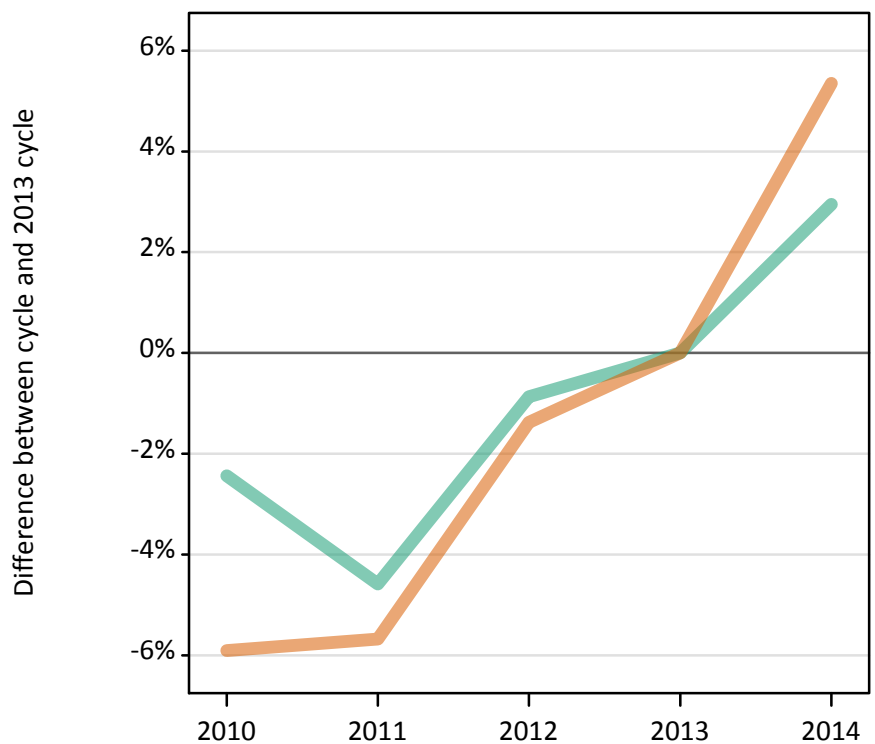
Placed 18 year old applicants: entry rate (indexed to 100 = Men)

| Applicant Status | Sex | 2010 | 2011 | 2012 | 2013 | 2014 |
|------------------|-------|------|------|------|------|------|
| Placed | Men | 100 | 100 | 100 | 100 | 100 |
| | Women | 135 | 136 | 142 | 143 | 146 |

S.49 Placed applicants from Wales by sex: 6 days after A level results day

Placed applicants: change relative to 2013 cycle totals

Men
Women



S.50 Placed applicants from Wales by sex: 6 days after A level results day

| Applicant Status | Sex | 2010 | 2011 | 2012 | 2013 | 2014 |
|------------------|-------|--------|--------|--------|--------|--------|
| Placed | Men | 7,280 | 7,120 | 7,400 | 7,460 | 7,680 |
| | Women | 9,350 | 9,370 | 9,800 | 9,940 | 10,470 |
| | All | 16,630 | 16,490 | 17,200 | 17,400 | 18,150 |

S.51 Placed applicants from Wales by sex: 6 days after A level results day

Placed applicants: change relative to 2013 cycle totals

| Applicant Status | Sex | 2010 | 2011 | 2012 | 2013 | 2014 |
|------------------|-------|------|------|------|------|------|
| Placed | Men | -2% | -5% | -1% | 0% | 3% |
| | Women | -6% | -6% | -1% | 0% | 5% |
| | All | -4% | -5% | -1% | 0% | 4% |

S.52 Placed applicants from Wales by sex: 6 days after A level results day

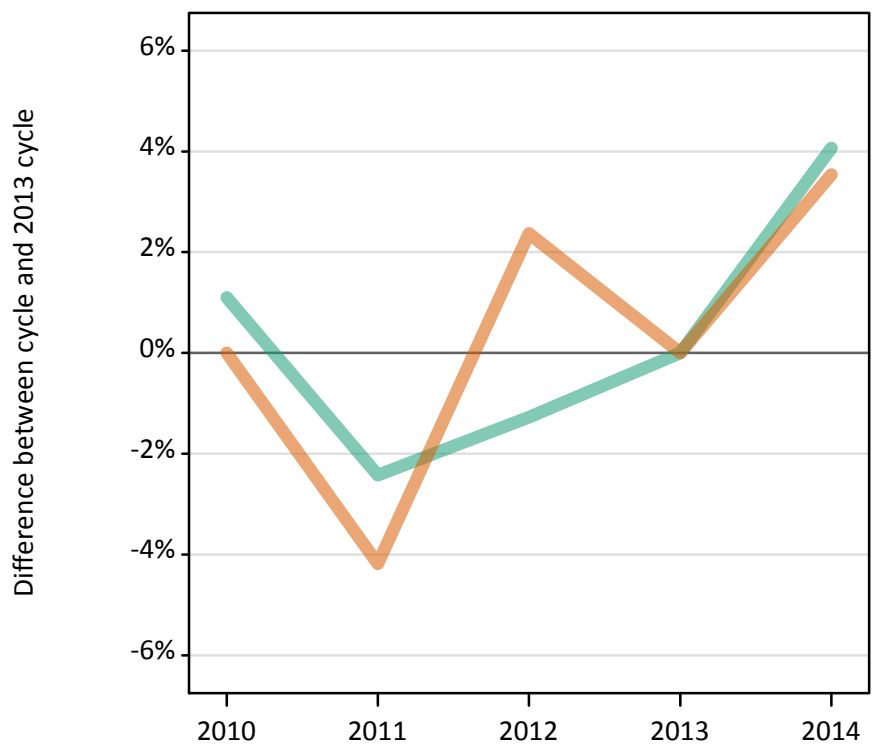
Placed applicants: absolute change relative to 2013 cycle totals

| Applicant Status | Sex | 2010 | 2011 | 2012 | 2013 | 2014 |
|------------------|-------|------|------|------|------|------|
| Placed | Men | -180 | -340 | -70 | 0 | 220 |
| | Women | -590 | -560 | -140 | 0 | 530 |
| | All | -770 | -910 | -200 | 0 | 750 |

S.53 Placed 18 year old applicants from Wales by sex: 6 days after A level results day

Placed 18 year old applicants: change relative to 2013 cycle totals

Men
Women



S.54 Placed 18 year old applicants from Wales by sex: 6 days after A level results day

| Applicant Status | Sex | 2010 | 2011 | 2012 | 2013 | 2014 |
|------------------|-------|-------|-------|-------|-------|-------|
| Placed | Men | 4,130 | 3,980 | 4,030 | 4,080 | 4,250 |
| | Women | 5,400 | 5,170 | 5,530 | 5,400 | 5,590 |
| | All | 9,520 | 9,150 | 9,560 | 9,480 | 9,840 |

S.55 Placed 18 year old applicants from Wales by sex: 6 days after A level results day

Placed 18 year old applicants: change relative to 2013 cycle totals

| Applicant Status | Sex | 2010 | 2011 | 2012 | 2013 | 2014 |
|------------------|-------|------|------|------|------|------|
| Placed | Men | 1% | -2% | -1% | 0% | 4% |
| | Women | 0% | -4% | 2% | 0% | 4% |
| | All | 0% | -3% | 1% | 0% | 4% |

S.56 Placed 18 year old applicants from Wales by sex: 6 days after A level results day

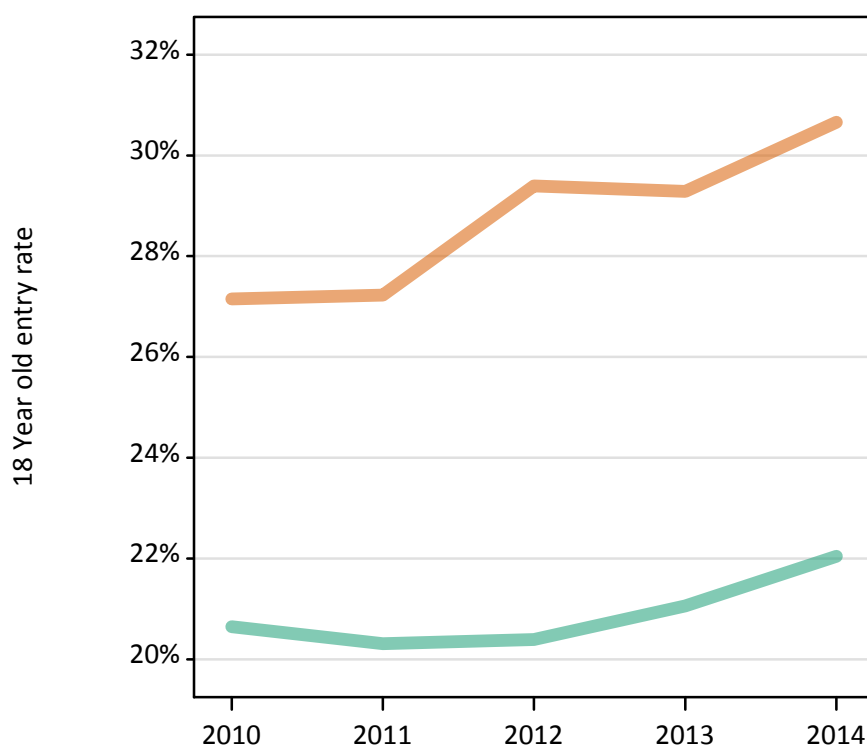
Placed 18 year old applicants: absolute change relative to 2013 cycle totals

| Applicant Status | Sex | 2010 | 2011 | 2012 | 2013 | 2014 |
|------------------|-------|------|------|------|------|------|
| Placed | Men | 50 | -100 | -50 | 0 | 170 |
| | Women | 0 | -230 | 130 | 0 | 190 |
| | All | 50 | -330 | 80 | 0 | 360 |

S.57 Placed 18 year old applicants from Wales by sex: 6 days after A level results day

Placed 18 year old applicants: entry rate

Men
Women



S.58 Placed 18 year old applicants from Wales by sex: 6 days after A level results day

Placed 18 year old applicants: entry rate

| Applicant Status | Sex | 2010 | 2011 | 2012 | 2013 | 2014 |
|------------------|-------|-------|-------|-------|-------|-------|
| Placed | Men | 20.6% | 20.3% | 20.4% | 21.1% | 22.0% |
| | Women | 27.2% | 27.2% | 29.4% | 29.3% | 30.7% |
| | All | 23.9% | 23.7% | 24.8% | 25.1% | 26.2% |

S.59 Placed 18 year old applicants from Wales by sex: 6 days after A level results day

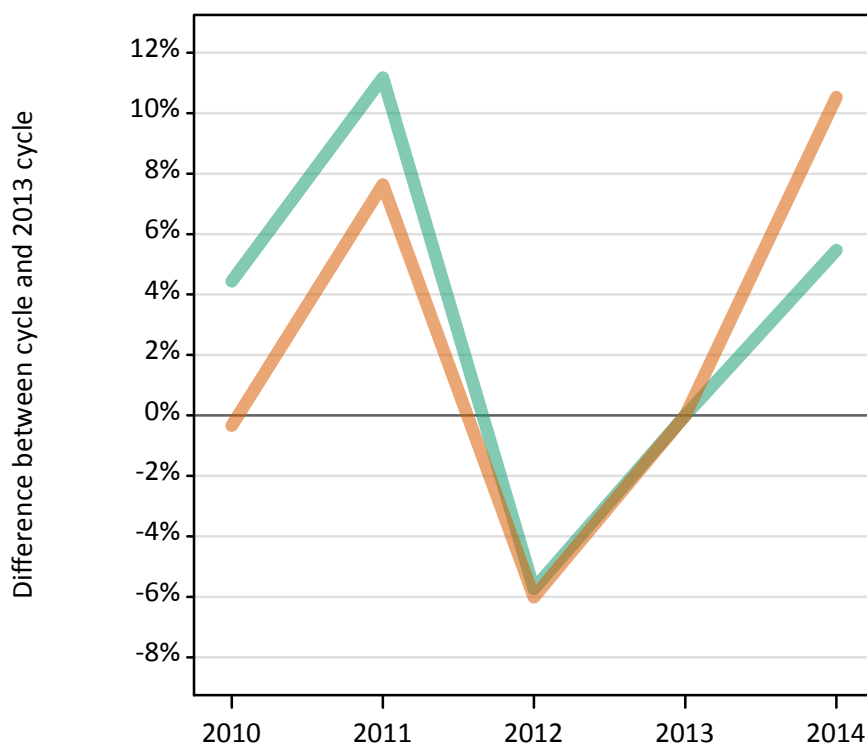
Placed 18 year old applicants: entry rate (indexed to 100 = Men)

| Applicant Status | Sex | 2010 | 2011 | 2012 | 2013 | 2014 |
|------------------|-------|------|------|------|------|------|
| Placed | Men | 100 | 100 | 100 | 100 | 100 |
| | Women | 132 | 134 | 144 | 139 | 139 |

S.60 Placed applicants from the EU (excluding the UK) by sex: 6 days after A level results day

Placed applicants: change relative to 2013 cycle totals

Men
Women



S.61 Placed applicants from the EU (excluding the UK) by sex: 6 days after A level results day

| Applicant Status | Sex | 2010 | 2011 | 2012 | 2013 | 2014 |
|------------------|-------|--------|--------|--------|--------|--------|
| Placed | Men | 10,090 | 10,740 | 9,110 | 9,660 | 10,190 |
| | Women | 12,260 | 13,240 | 11,560 | 12,300 | 13,590 |
| | All | 22,350 | 23,980 | 20,670 | 21,960 | 23,790 |

S.62 Placed applicants from the EU (excluding the UK) by sex: 6 days after A level results day

Placed applicants: change relative to 2013 cycle totals

| Applicant Status | Sex | 2010 | 2011 | 2012 | 2013 | 2014 |
|------------------|-------|------|------|------|------|------|
| Placed | Men | 4% | 11% | -6% | 0% | 5% |
| | Women | -0% | 8% | -6% | 0% | 11% |
| | All | 2% | 9% | -6% | 0% | 8% |

S.63 Placed applicants from the EU (excluding the UK) by sex: 6 days after A level results day

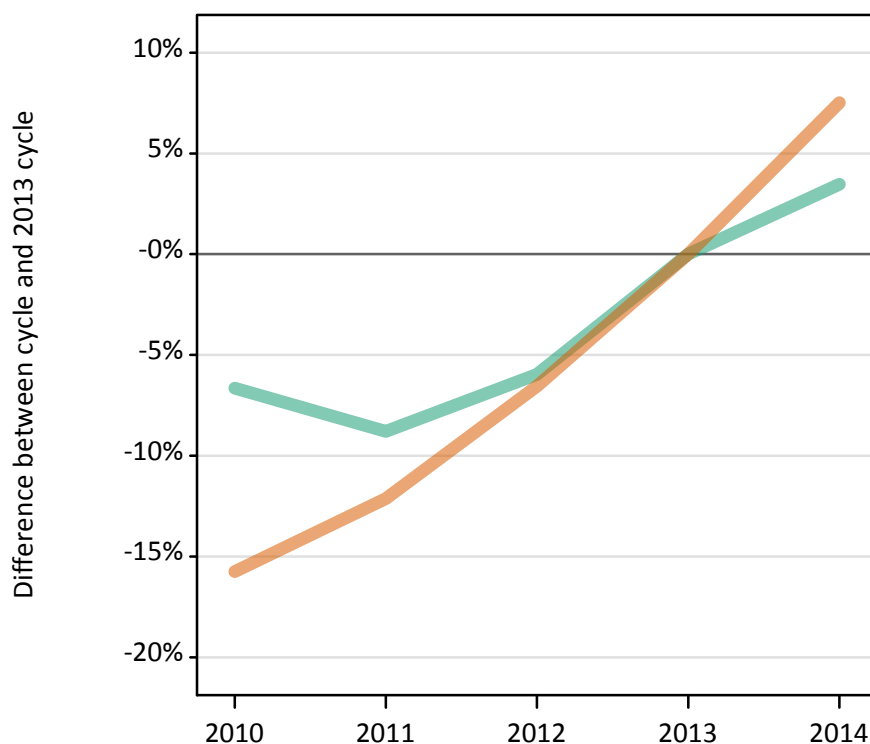
Placed applicants: absolute change relative to 2013 cycle totals

| Applicant Status | Sex | 2010 | 2011 | 2012 | 2013 | 2014 |
|------------------|-------|------|-------|--------|------|-------|
| Placed | Men | 430 | 1,080 | -550 | 0 | 530 |
| | Women | -40 | 940 | -740 | 0 | 1,300 |
| | All | 390 | 2,020 | -1,290 | 0 | 1,820 |

S.64 Placed applicants from overseas (not EU) by sex: 6 days after A level results day

Placed applicants: change relative to 2013 cycle totals

Men
Women



S.65 Placed applicants from overseas (not EU) by sex: 6 days after A level results day

| Applicant Status | Sex | 2010 | 2011 | 2012 | 2013 | 2014 |
|------------------|-------|--------|--------|--------|--------|--------|
| Placed | Men | 13,100 | 12,800 | 13,200 | 14,040 | 14,520 |
| | Women | 13,100 | 13,660 | 14,530 | 15,550 | 16,710 |
| | All | 26,200 | 26,460 | 27,730 | 29,580 | 31,240 |

S.66 Placed applicants from overseas (not EU) by sex: 6 days after A level results day

Placed applicants: change relative to 2013 cycle totals

| Applicant Status | Sex | 2010 | 2011 | 2012 | 2013 | 2014 |
|------------------|-------|------|------|------|------|------|
| Placed | Men | -7% | -9% | -6% | 0% | 3% |
| | Women | -16% | -12% | -7% | 0% | 8% |
| | All | -11% | -11% | -6% | 0% | 6% |

S.67 Placed applicants from overseas (not EU) by sex: 6 days after A level results day

Placed applicants: absolute change relative to 2013 cycle totals

| Applicant Status | Sex | 2010 | 2011 | 2012 | 2013 | 2014 |
|------------------|-------|--------|--------|--------|------|-------|
| Placed | Men | -930 | -1,230 | -840 | 0 | 490 |
| | Women | -2,450 | -1,890 | -1,020 | 0 | 1,170 |
| | All | -3,380 | -3,120 | -1,850 | 0 | 1,660 |