

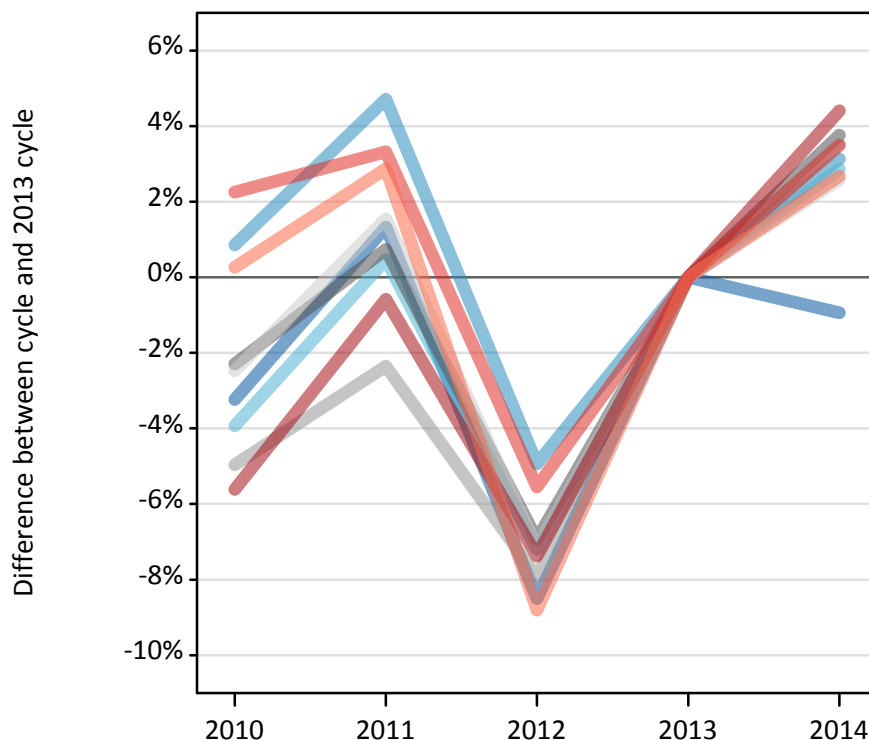
Daily Clearing Analysis: Region

Analysis at 00:05 on Thursday 21 August 2014 (7 days after A level results day)

R.1 Placed applicants by region of domicile: 7 days after A level results day

Placed applicants: change relative to 2013 cycle totals

- North East
- North West
- Yorkshire and The Humber
- East Midlands
- West Midlands
- East of England
- London
- South East
- South West



R.2 Placed applicants by region of domicile: 7 days after A level results day

Applicant Status	Domicile	2010	2011	2012	2013	2014
Placed	North East	14,470	15,150	13,680	14,950	14,810
	North West	45,550	47,280	42,930	45,160	46,580
	Yorkshire and The Humber	29,770	31,140	28,760	30,990	31,880
	East Midlands	25,510	26,300	24,300	26,110	27,090
	West Midlands	33,840	34,770	32,790	35,610	36,870
	East of England	33,970	35,370	32,330	34,830	35,720
	London	56,750	59,780	55,690	60,130	62,780
	South East	54,920	55,490	50,730	53,710	55,580
	South West	31,060	31,870	28,250	30,980	31,810
	(England total)	325,830	337,140	309,450	332,450	343,110
	Scotland	27,910	27,540	27,460	27,940	28,810
	Northern Ireland	12,810	13,030	12,140	13,440	13,470
	Wales	16,860	16,670	17,360	17,550	18,290
	UK	383,410	394,380	366,410	391,380	403,690

R.3 Placed applicants by region of domicile: 7 days after A level results day

Placed applicants: change relative to 2013 cycle totals

Applicant Status	Domicile	2010	2011	2012	2013	2014
Placed	North East	-3%	1%	-9%	0%	-1%
	North West	1%	5%	-5%	0%	3%
	Yorkshire and The Humber	-4%	0%	-7%	0%	3%
	East Midlands	-2%	1%	-7%	0%	4%
	West Midlands	-5%	-2%	-8%	0%	4%
	East of England	-2%	2%	-7%	0%	3%
	London	-6%	-1%	-7%	0%	4%
	South East	2%	3%	-6%	0%	3%
	South West	0%	3%	-9%	0%	3%
	(England total)	-2%	1%	-7%	0%	3%
	Scotland	-0%	-1%	-2%	0%	3%
	Northern Ireland	-5%	-3%	-10%	0%	0%
	Wales	-4%	-5%	-1%	0%	4%
	UK	-2%	1%	-6%	0%	3%

R.4 Placed applicants by region of domicile: 7 days after A level results day

Placed applicants: absolute change relative to 2013 cycle totals

Applicant Status	Domicile	2010	2011	2012	2013	2014
Placed	North East	-480	200	-1,270	0	-140
	North West	390	2,130	-2,230	0	1,420
	Yorkshire and The Humber	-1,220	150	-2,230	0	890
	East Midlands	-600	190	-1,810	0	980
	West Midlands	-1,770	-840	-2,820	0	1,260
	East of England	-860	540	-2,500	0	900
	London	-3,380	-350	-4,430	0	2,650
	South East	1,210	1,790	-2,980	0	1,870
	South West	80	890	-2,730	0	830
	(England total)	-6,620	4,690	-23,000	0	10,660
	Scotland	-20	-400	-480	0	880
	Northern Ireland	-630	-410	-1,300	0	30
	Wales	-700	-880	-190	0	740
	UK	-7,970	3,000	-24,970	0	12,310

R.5 Placed 18 year old applicants by region of domicile: 7 days after A level results day

Placed 18 year old applicants: change relative to 2013 cycle totals



R.6 Placed 18 year old applicants by region of domicile: 7 days after A level results day

Applicant Status	Domicile	2010	2011	2012	2013	2014
Placed	North East	7,870	8,000	7,470	7,960	7,810
	North West	25,290	26,100	24,860	25,100	25,890
	Yorkshire and The Humber	16,100	16,780	16,320	17,090	17,850
	East Midlands	14,250	14,520	14,090	14,740	14,930
	West Midlands	17,900	18,620	18,320	19,260	20,040
	East of England	19,660	20,620	19,850	20,710	21,270
	London	27,010	29,140	28,700	30,770	31,980
	South East	30,200	30,780	30,400	30,990	31,850
	South West	15,470	16,290	15,280	15,810	16,100
	(England total)	173,750	180,850	175,270	182,420	187,710
	Scotland	14,560	13,890	13,980	14,060	14,270
	Northern Ireland	8,450	8,290	7,860	8,370	8,190
	Wales	9,620	9,230	9,600	9,530	9,900
	UK	206,380	212,260	206,710	214,380	220,070

R.7 Placed 18 year old applicants by region of domicile: 7 days after A level results day

Placed 18 year old applicants: change relative to 2013 cycle totals

Applicant Status	Domicile	2010	2011	2012	2013	2014
Placed	North East	-1%	1%	-6%	0%	-2%
	North West	1%	4%	-1%	0%	3%
	Yorkshire and The Humber	-6%	-2%	-5%	0%	4%
	East Midlands	-3%	-1%	-4%	0%	1%
	West Midlands	-7%	-3%	-5%	0%	4%
	East of England	-5%	-0%	-4%	0%	3%
	London	-12%	-5%	-7%	0%	4%
	South East	-3%	-1%	-2%	0%	3%
	South West	-2%	3%	-3%	0%	2%
	(England total)	-5%	-1%	-4%	0%	3%
	Scotland	4%	-1%	-1%	0%	2%
	Northern Ireland	1%	-1%	-6%	0%	-2%
	Wales	1%	-3%	1%	0%	4%
	UK	-4%	-1%	-4%	0%	3%

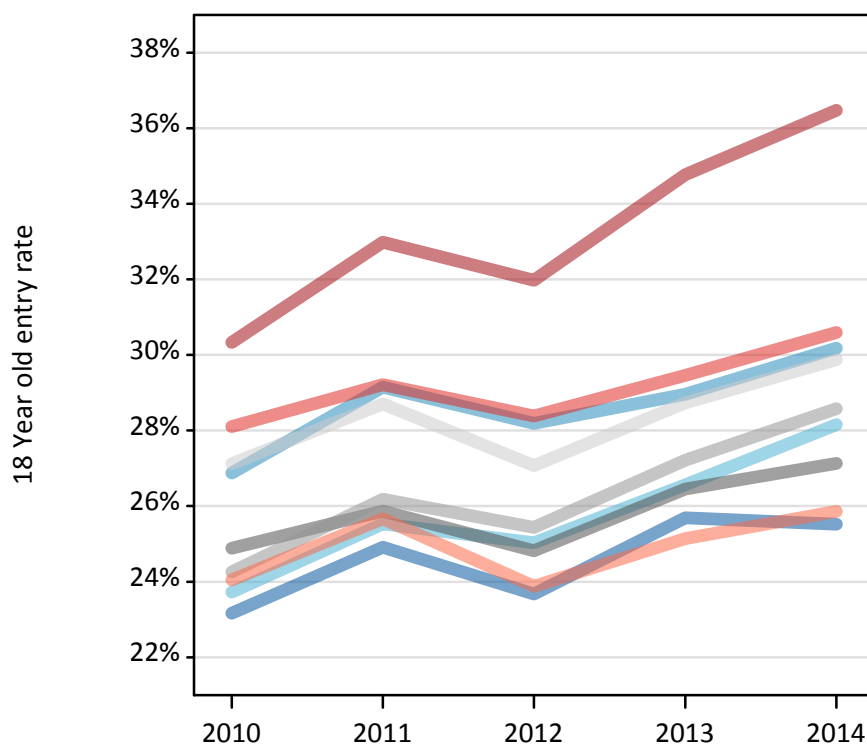
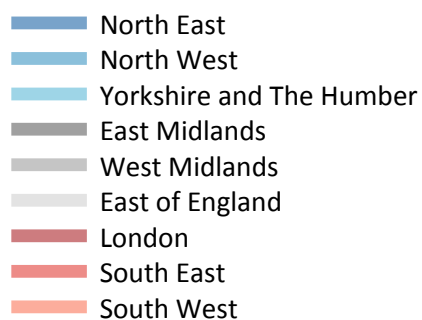
R.8 Placed 18 year old applicants by region of domicile: 7 days after A level results day

Placed 18 year old applicants: absolute change relative to 2013 cycle totals

Applicant Status	Domicile	2010	2011	2012	2013	2014
Placed	North East	-90	40	-480	0	-150
	North West	200	1,000	-240	0	800
	Yorkshire and The Humber	-990	-310	-770	0	760
	East Midlands	-490	-210	-650	0	200
	West Midlands	-1,360	-650	-940	0	780
	East of England	-1,050	-90	-860	0	560
	London	-3,770	-1,630	-2,080	0	1,200
	South East	-790	-210	-590	0	860
	South West	-340	480	-530	0	280
	(England total)	-8,670	-1,570	-7,150	0	5,290
	Scotland	500	-170	-80	0	210
	Northern Ireland	70	-80	-520	0	-190
	Wales	90	-300	80	0	370
	UK	-8,010	-2,120	-7,670	0	5,690

R.9 Placed 18 year old applicants by region of domicile: 7 days after A level results day

Placed 18 year old applicants: entry rate



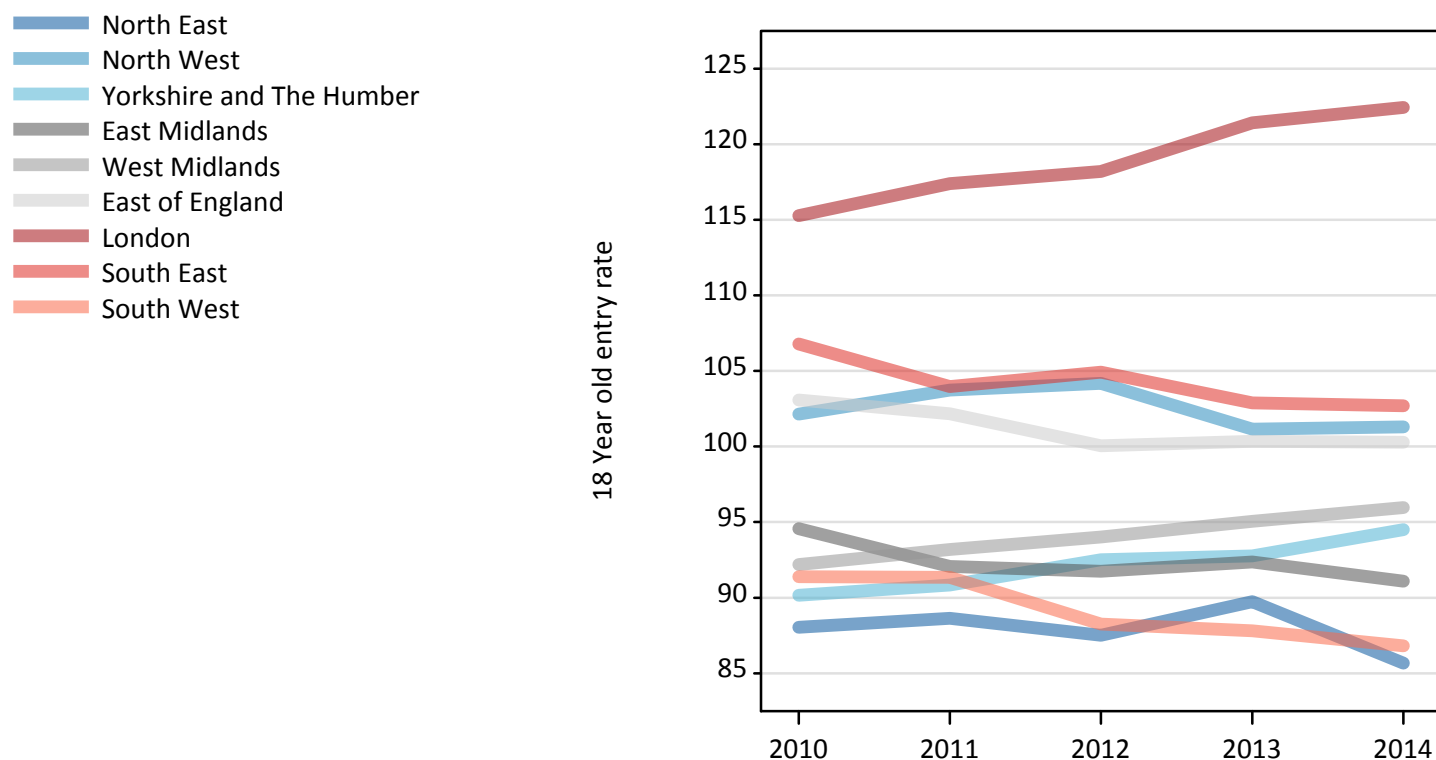
R.10 Placed 18 year old applicants by region of domicile: 7 days after A level results day

Placed 18 year old applicants: entry rate

Applicant Status	Domicile	2010	2011	2012	2013	2014
Placed	North East	23.2%	24.9%	23.7%	25.7%	25.5%
	North West	26.9%	29.2%	28.2%	29.0%	30.2%
	Yorkshire and The Humber	23.7%	25.5%	25.0%	26.6%	28.2%
	East Midlands	24.9%	25.9%	24.8%	26.4%	27.1%
	West Midlands	24.3%	26.2%	25.4%	27.2%	28.6%
	East of England	27.1%	28.7%	27.1%	28.7%	29.9%
	London	30.3%	33.0%	32.0%	34.8%	36.5%
	South East	28.1%	29.2%	28.4%	29.5%	30.6%
	South West	24.0%	25.7%	23.9%	25.1%	25.9%
	(England total)	26.3%	28.1%	27.1%	28.6%	29.8%
	Scotland	22.8%	22.1%	22.6%	22.8%	23.3%
	Northern Ireland	33.1%	33.2%	31.3%	34.2%	33.7%
	Wales	24.1%	23.9%	24.9%	25.2%	26.4%
	UK	26.1%	27.6%	26.7%	28.2%	29.2%

R.11 Placed 18 year old applicants by region of domicile: 7 days after A level results day

Placed 18 year old applicants: entry rates (indexed to 100 = England)



R.12 Placed 18 year old applicants by region of domicile: 7 days after A level results day

Placed 18 year old applicants: entry rate (indexed to 100 = England)

Applicant Status	Domicile	2010	2011	2012	2013	2014
Placed	North East	88	89	88	90	86
	North West	102	104	104	101	101
	Yorkshire and The Humber	90	91	93	93	95
	East Midlands	95	92	92	92	91
	West Midlands	92	93	94	95	96
	East of England	103	102	100	100	100
	London	115	117	118	121	122
	South East	107	104	105	103	103
	South West	91	91	88	88	87
	(England total)	100	100	100	100	100