

# Daily Clearing Analysis: Sex

Analysis at 00:05 on Thursday 21 August 2014 (7 days after A level results day)

## S.1 Placed applicants from all domiciles by sex: 7 days after A level results day

Placed applicants: change relative to 2013 cycle totals

Men  
Women



## S.2 Placed applicants from all domiciles by sex: 7 days after A level results day

Applicant Status	Sex	2010	2011	2012	2013	2014
Placed	Men	193,680	200,320	184,700	198,060	202,910
	Women	239,040	245,190	230,950	245,580	256,640
	All	432,720	445,510	415,650	443,640	459,550

## S.3 Placed applicants from all domiciles by sex: 7 days after A level results day

Placed applicants: change relative to 2013 cycle totals

Applicant Status	Sex	2010	2011	2012	2013	2014
Placed	Men	-2%	1%	-7%	0%	2%
	Women	-3%	-0%	-6%	0%	5%
	All	-2%	0%	-6%	0%	4%

## S.4 Placed applicants from all domiciles by sex: 7 days after A level results day

Placed applicants: absolute change relative to 2013 cycle totals

Applicant Status	Sex	2010	2011	2012	2013	2014
Placed	Men	-4,380	2,270	-13,360	0	4,850
	Women	-6,540	-400	-14,630	0	11,060
	All	-10,920	1,870	-27,990	0	15,910

### S.5 Placed applicants from the UK by sex: 7 days after A level results day

Placed applicants: change relative to 2013 cycle totals

Men  
Women



### S.6 Placed applicants from the UK by sex: 7 days after A level results day

Applicant Status	Sex	2010	2011	2012	2013	2014
Placed	Men	170,100	176,420	161,900	174,000	177,790
	Women	213,310	217,960	204,510	217,380	225,900
	All	383,410	394,380	366,410	391,380	403,690

### S.7 Placed applicants from the UK by sex: 7 days after A level results day

Placed applicants: change relative to 2013 cycle totals

Applicant Status	Sex	2010	2011	2012	2013	2014
Placed	Men	-2%	1%	-7%	0%	2%
	Women	-2%	0%	-6%	0%	4%
	All	-2%	1%	-6%	0%	3%

### S.8 Placed applicants from the UK by sex: 7 days after A level results day

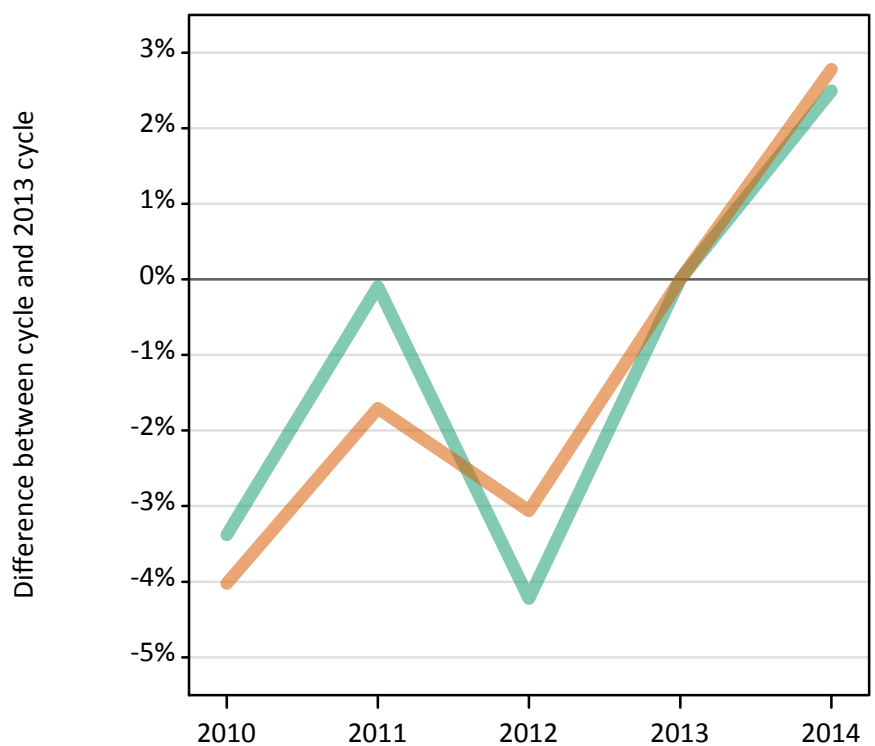
Placed applicants: absolute change relative to 2013 cycle totals

Applicant Status	Sex	2010	2011	2012	2013	2014
Placed	Men	-3,900	2,420	-12,100	0	3,790
	Women	-4,070	580	-12,870	0	8,520
	All	-7,970	3,000	-24,970	0	12,310

### S.9 Placed 18 year old applicants from the UK by sex: 7 days after A level results day

Placed 18 year old applicants: change relative to 2013 cycle totals

Men  
Women



### S.10 Placed 18 year old applicants from the UK by sex: 7 days after A level results day

Applicant Status	Sex	2010	2011	2012	2013	2014
Placed	Men	92,190	95,330	91,390	95,420	97,800
	Women	114,180	116,930	115,320	118,970	122,270
	All	206,380	212,260	206,710	214,380	220,070

### S.11 Placed 18 year old applicants from the UK by sex: 7 days after A level results day

Placed 18 year old applicants: change relative to 2013 cycle totals

Applicant Status	Sex	2010	2011	2012	2013	2014
Placed	Men	-3%	-0%	-4%	0%	2%
	Women	-4%	-2%	-3%	0%	3%
	All	-4%	-1%	-4%	0%	3%

### S.12 Placed 18 year old applicants from the UK by sex: 7 days after A level results day

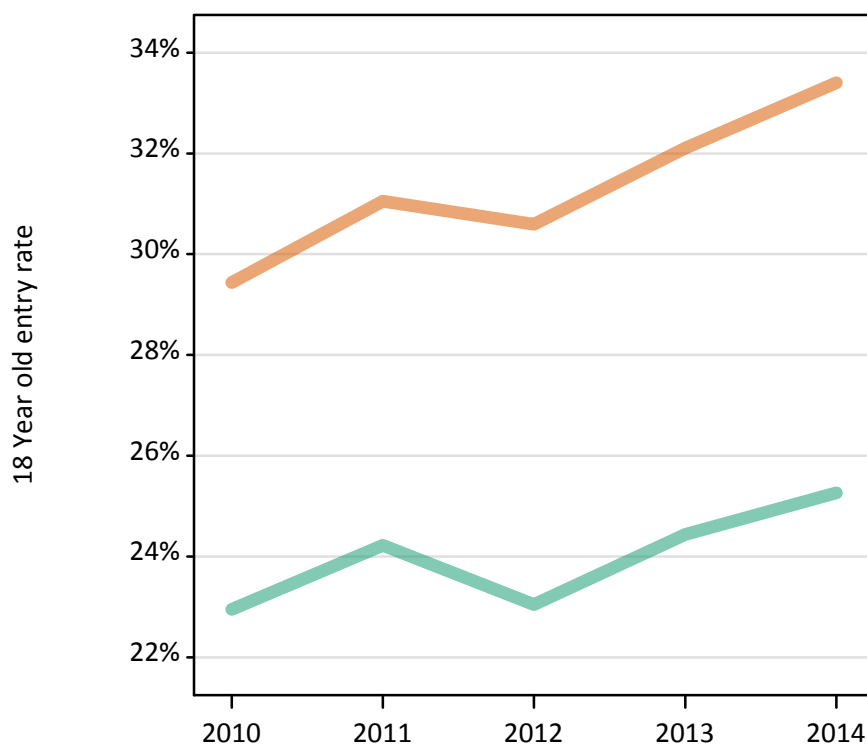
Placed 18 year old applicants: absolute change relative to 2013 cycle totals

Applicant Status	Sex	2010	2011	2012	2013	2014
Placed	Men	-3,230	-90	-4,030	0	2,380
	Women	-4,780	-2,030	-3,640	0	3,310
	All	-8,010	-2,120	-7,670	0	5,690

### S.13 Placed 18 year old applicants from the UK by sex: 7 days after A level results day

Placed 18 year old applicants: entry rate

Men  
Women



### S.14 Placed 18 year old applicants from the UK by sex: 7 days after A level results day

Placed 18 year old applicants: entry rate

Applicant Status	Sex	2010	2011	2012	2013	2014
Placed	Men	23.0%	24.2%	23.0%	24.4%	25.3%
	Women	29.4%	31.1%	30.6%	32.1%	33.4%
	All	26.1%	27.6%	26.7%	28.2%	29.2%

### S.15 Placed 18 year old applicants from the UK by sex: 7 days after A level results day

Placed 18 year old applicants: entry rate (indexed to 100 = Men)

Applicant Status	Sex	2010	2011	2012	2013	2014
Placed	Men	100	100	100	100	100
	Women	128	128	133	131	132

### S.16 Placed applicants from England by sex: 7 days after A level results day

Placed applicants: change relative to 2013 cycle totals

Men  
Women



### S.17 Placed applicants from England by sex: 7 days after A level results day

Applicant Status	Sex	2010	2011	2012	2013	2014
Placed	Men	145,210	151,650	137,360	148,460	152,000
	Women	180,630	185,490	172,090	184,000	191,110
	All	325,830	337,140	309,450	332,450	343,110

### S.18 Placed applicants from England by sex: 7 days after A level results day

Placed applicants: change relative to 2013 cycle totals

Applicant Status	Sex	2010	2011	2012	2013	2014
Placed	Men	-2%	2%	-7%	0%	2%
	Women	-2%	1%	-6%	0%	4%
	All	-2%	1%	-7%	0%	3%

### S.19 Placed applicants from England by sex: 7 days after A level results day

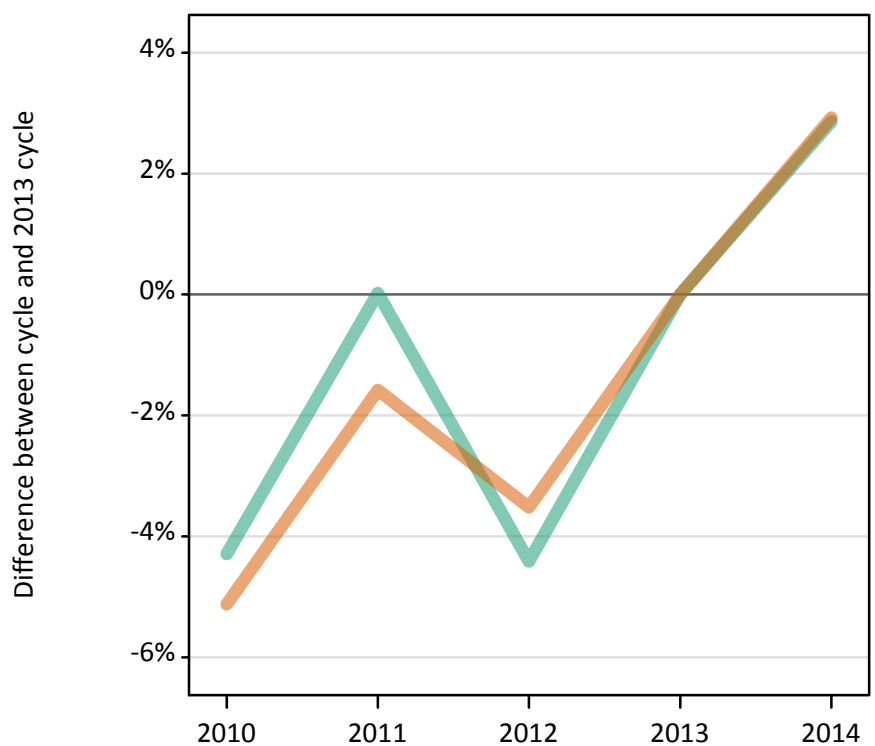
Placed applicants: absolute change relative to 2013 cycle totals

Applicant Status	Sex	2010	2011	2012	2013	2014
Placed	Men	-3,250	3,190	-11,090	0	3,540
	Women	-3,370	1,500	-11,910	0	7,120
	All	-6,620	4,690	-23,000	0	10,660

### S.20 Placed 18 year old applicants from England by sex: 7 days after A level results day

Placed 18 year old applicants: change relative to 2013 cycle totals

Men  
Women



### S.21 Placed 18 year old applicants from England by sex: 7 days after A level results day

Applicant Status	Sex	2010	2011	2012	2013	2014
Placed	Men	78,100	81,630	78,000	81,610	83,940
	Women	95,650	99,220	97,270	100,820	103,760
	All	173,750	180,850	175,270	182,420	187,710

### S.22 Placed 18 year old applicants from England by sex: 7 days after A level results day

Placed 18 year old applicants: change relative to 2013 cycle totals

Applicant Status	Sex	2010	2011	2012	2013	2014
Placed	Men	-4%	0%	-4%	0%	3%
	Women	-5%	-2%	-4%	0%	3%
	All	-5%	-1%	-4%	0%	3%

### S.23 Placed 18 year old applicants from England by sex: 7 days after A level results day

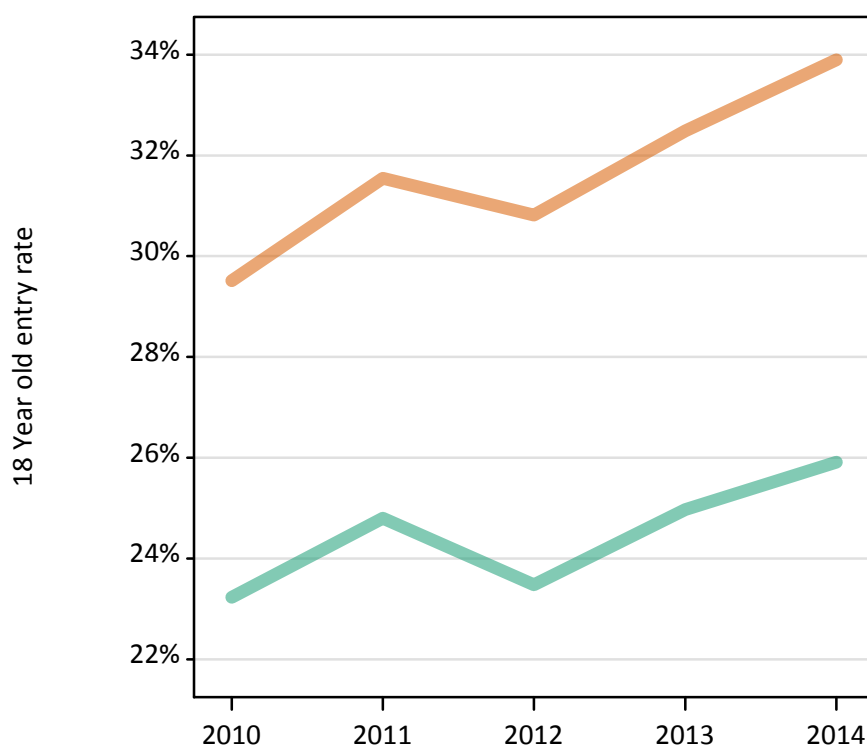
Placed 18 year old applicants: absolute change relative to 2013 cycle totals

Applicant Status	Sex	2010	2011	2012	2013	2014
Placed	Men	-3,500	20	-3,600	0	2,340
	Women	-5,170	-1,590	-3,550	0	2,950
	All	-8,670	-1,570	-7,150	0	5,290

### S.24 Placed 18 year old applicants from England by sex: 7 days after A level results day

Placed 18 year old applicants: entry rate

Men  
Women



### S.25 Placed 18 year old applicants from England by sex: 7 days after A level results day

Placed 18 year old applicants: entry rate

Applicant Status	Sex	2010	2011	2012	2013	2014
Placed	Men	23.2%	24.8%	23.5%	25.0%	25.9%
	Women	29.5%	31.5%	30.8%	32.5%	33.9%
	All	26.3%	28.1%	27.1%	28.6%	29.8%

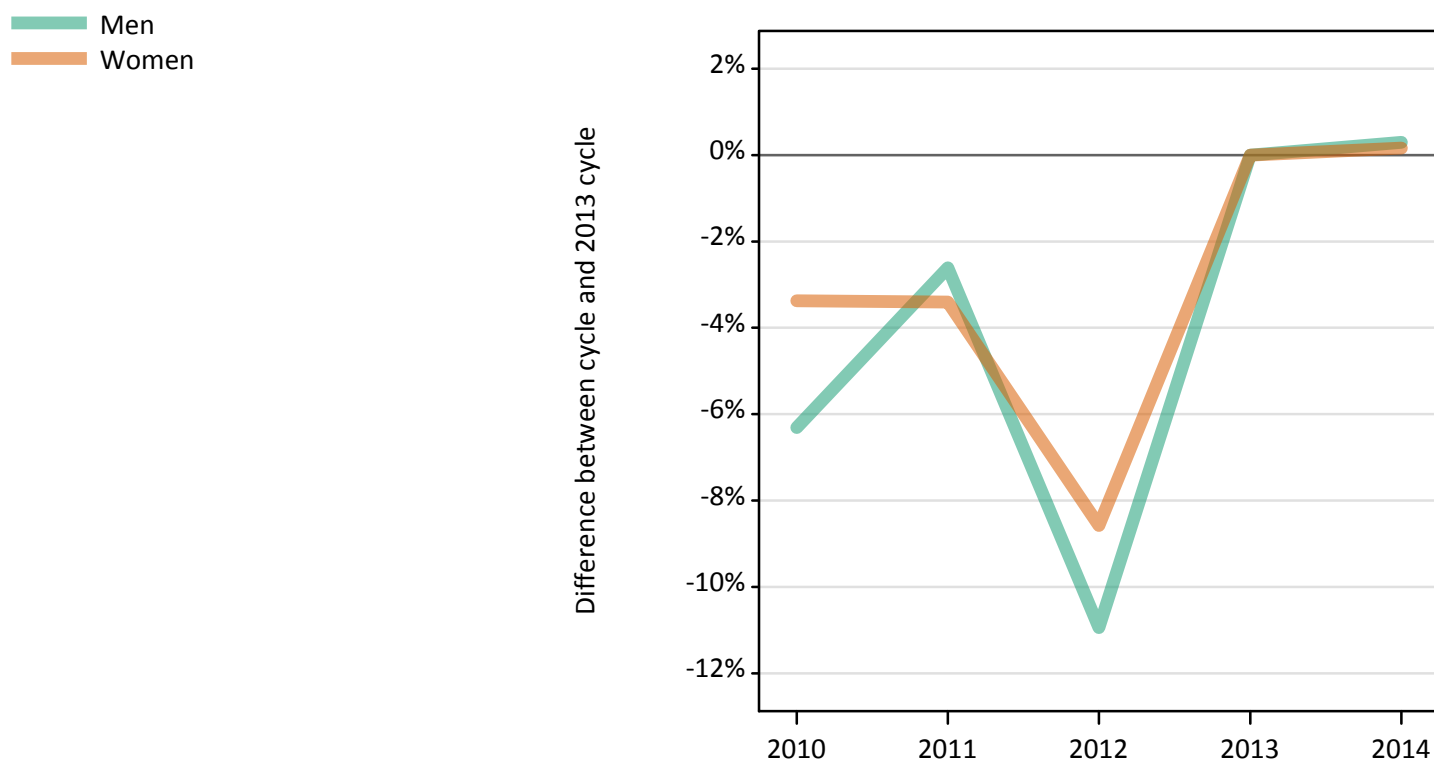
### S.26 Placed 18 year old applicants from England by sex: 7 days after A level results day

Placed 18 year old applicants: entry rate (indexed to 100 = Men)

Applicant Status	Sex	2010	2011	2012	2013	2014
Placed	Men	100	100	100	100	100
	Women	127	127	131	130	131

### S.27 Placed applicants from Northern Ireland by sex: 7 days after A level results day

Placed applicants: change relative to 2013 cycle totals



### S.28 Placed applicants from Northern Ireland by sex: 7 days after A level results day

Applicant Status	Sex	2010	2011	2012	2013	2014
Placed	Men	5,680	5,900	5,390	6,060	6,080
	Women	7,130	7,130	6,750	7,380	7,390
	All	12,810	13,030	12,140	13,440	13,470

### S.29 Placed applicants from Northern Ireland by sex: 7 days after A level results day

Placed applicants: change relative to 2013 cycle totals

Applicant Status	Sex	2010	2011	2012	2013	2014
Placed	Men	-6%	-3%	-11%	0%	0%
	Women	-3%	-3%	-9%	0%	0%
	All	-5%	-3%	-10%	0%	0%

### S.30 Placed applicants from Northern Ireland by sex: 7 days after A level results day

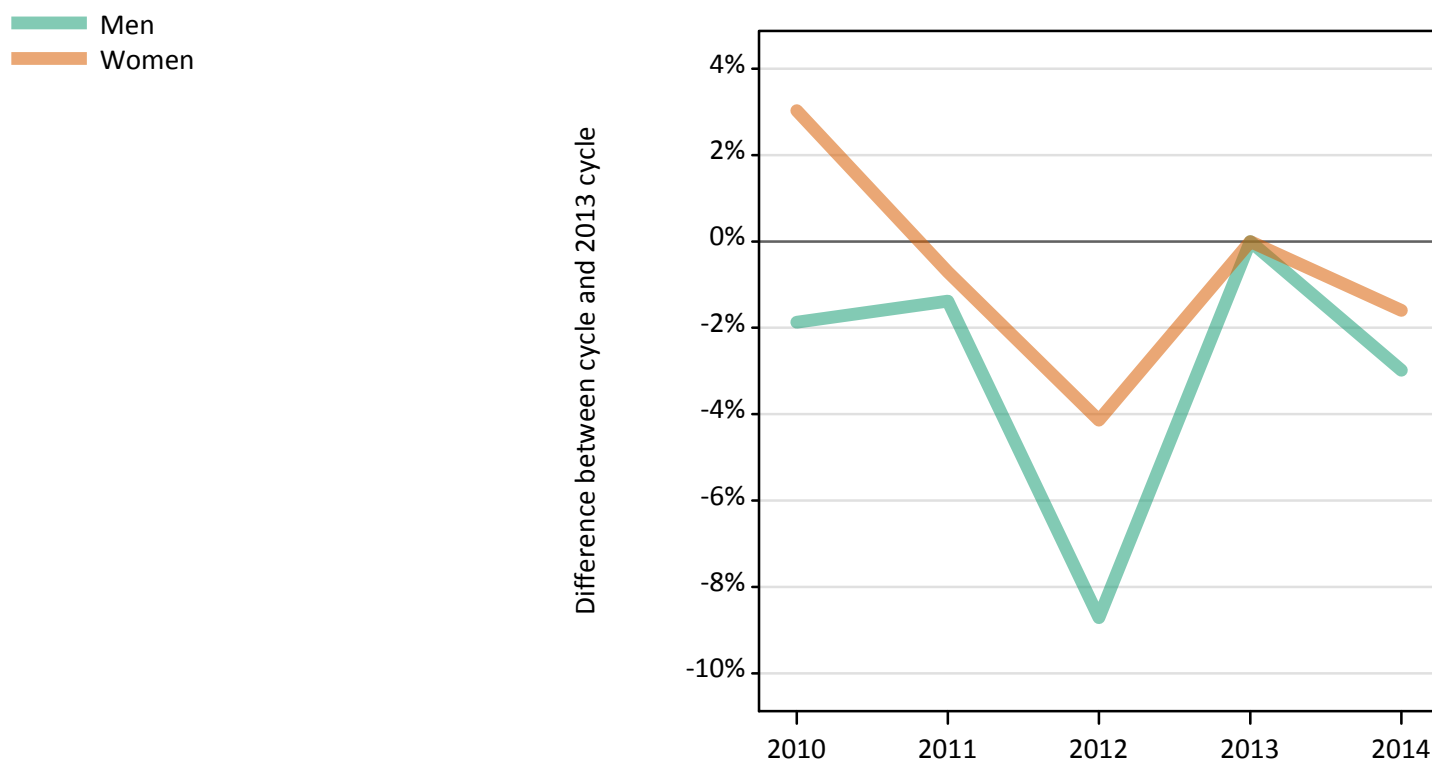
Placed applicants: absolute change relative to 2013 cycle totals

Applicant Status	Sex	2010	2011	2012	2013	2014
Placed	Men	-380	-160	-660	0	20
	Women	-250	-250	-630	0	10
	All	-630	-410	-1,300	0	30



### S.31 Placed 18 year old applicants from Northern Ireland by sex: 7 days after A level results day

Placed 18 year old applicants: change relative to 2013 cycle totals



### S.32 Placed 18 year old applicants from Northern Ireland by sex: 7 days after A level results day

Applicant Status	Sex	2010	2011	2012	2013	2014
Placed	Men	3,620	3,630	3,360	3,680	3,570
	Women	4,830	4,660	4,500	4,690	4,610
	All	8,450	8,290	7,860	8,370	8,190

### S.33 Placed 18 year old applicants from Northern Ireland by sex: 7 days after A level results day

Placed 18 year old applicants: change relative to 2013 cycle totals

Applicant Status	Sex	2010	2011	2012	2013	2014
Placed	Men	-2%	-1%	-9%	0%	-3%
	Women	3%	-1%	-4%	0%	-2%
	All	1%	-1%	-6%	0%	-2%

### S.34 Placed 18 year old applicants from Northern Ireland by sex: 7 days after A level results day

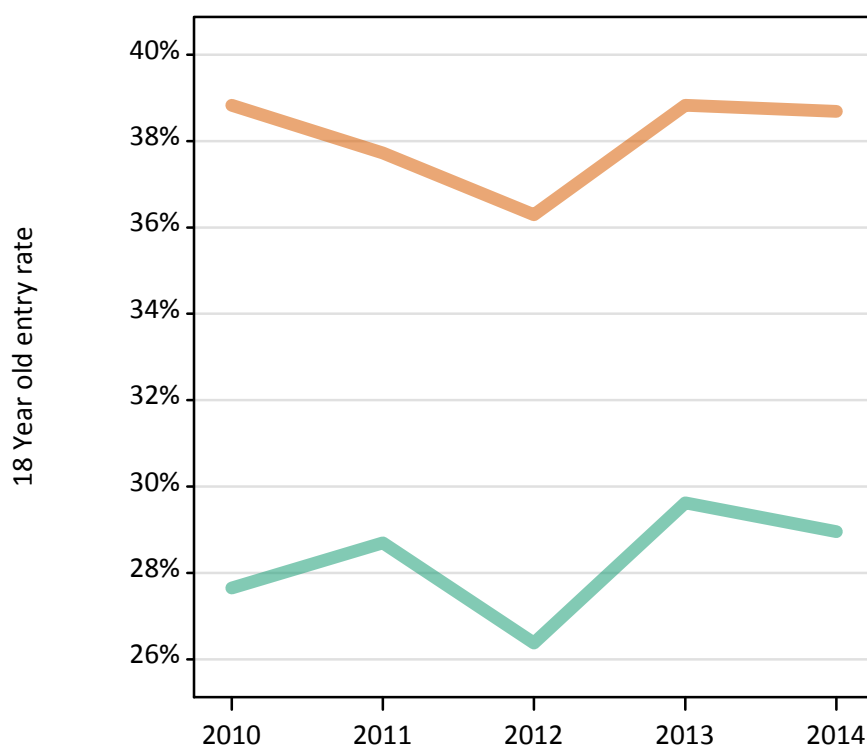
Placed 18 year old applicants: absolute change relative to 2013 cycle totals

Applicant Status	Sex	2010	2011	2012	2013	2014
Placed	Men	-70	-50	-320	0	-110
	Women	140	-30	-190	0	-80
	All	70	-80	-520	0	-190

### S.35 Placed 18 year old applicants from Northern Ireland by sex: 7 days after A level results day

Placed 18 year old applicants: entry rate

Men  
Women



### S.36 Placed 18 year old applicants from Northern Ireland by sex: 7 days after A level results day

Placed 18 year old applicants: entry rate

Applicant Status	Sex	2010	2011	2012	2013	2014
Placed	Men	27.7%	28.7%	26.4%	29.6%	29.0%
	Women	38.8%	37.7%	36.3%	38.8%	38.7%
	All	33.1%	33.2%	31.3%	34.2%	33.7%

### S.37 Placed 18 year old applicants from Northern Ireland by sex: 7 days after A level results day

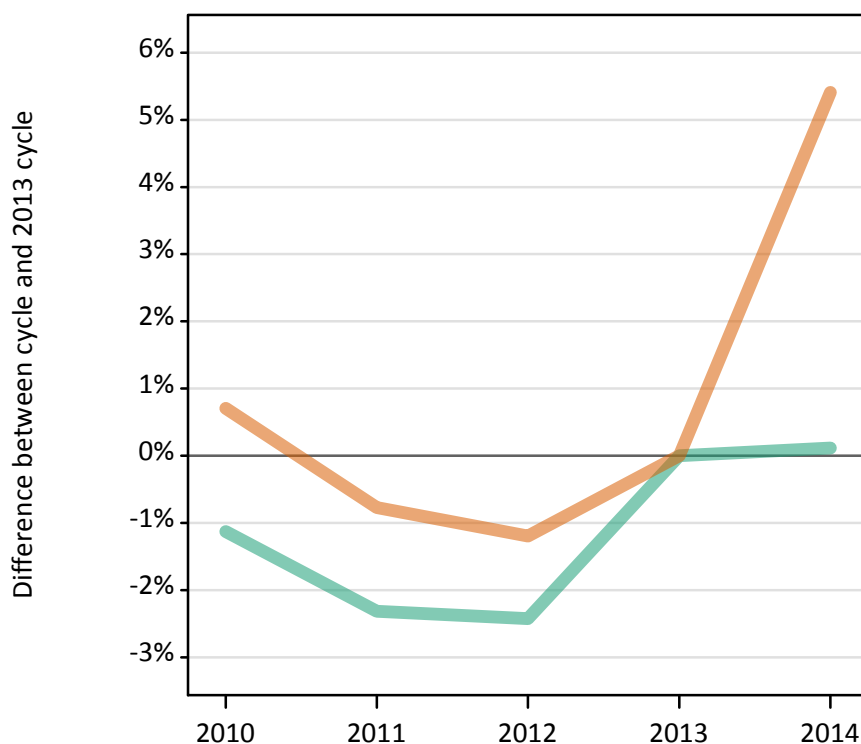
Placed 18 year old applicants: entry rate (indexed to 100 = Men)

Applicant Status	Sex	2010	2011	2012	2013	2014
Placed	Men	100	100	100	100	100
	Women	140	131	138	131	134

### S.38 Placed applicants from Scotland by sex: 7 days after A level results day

Placed applicants: change relative to 2013 cycle totals

Men  
Women



### S.39 Placed applicants from Scotland by sex: 7 days after A level results day

Applicant Status	Sex	2010	2011	2012	2013	2014
Placed	Men	11,820	11,680	11,670	11,960	11,970
	Women	16,090	15,860	15,790	15,980	16,840
	All	27,910	27,540	27,460	27,940	28,810

### S.40 Placed applicants from Scotland by sex: 7 days after A level results day

Placed applicants: change relative to 2013 cycle totals

Applicant Status	Sex	2010	2011	2012	2013	2014
Placed	Men	-1%	-2%	-2%	0%	0%
	Women	1%	-1%	-1%	0%	5%
	All	-0%	-1%	-2%	0%	3%

### S.41 Placed applicants from Scotland by sex: 7 days after A level results day

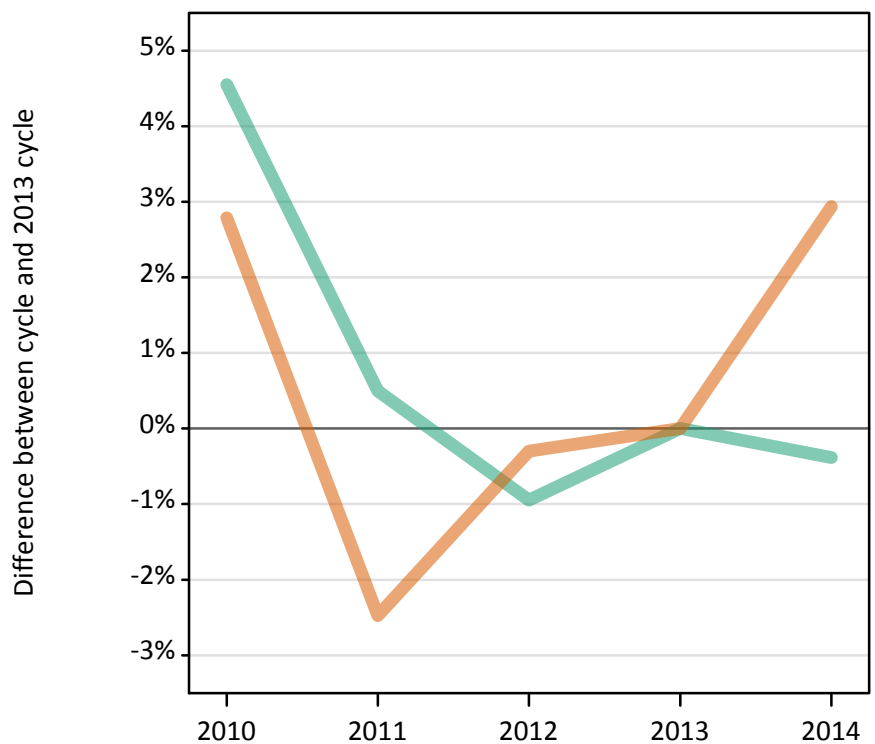
Placed applicants: absolute change relative to 2013 cycle totals

Applicant Status	Sex	2010	2011	2012	2013	2014
Placed	Men	-140	-280	-290	0	10
	Women	110	-120	-190	0	860
	All	-20	-400	-480	0	880

#### S.42 Placed 18 year old applicants from Scotland by sex: 7 days after A level results day

Placed 18 year old applicants: change relative to 2013 cycle totals

Men  
Women



#### S.43 Placed 18 year old applicants from Scotland by sex: 7 days after A level results day

Applicant Status	Sex	2010	2011	2012	2013	2014
Placed	Men	6,300	6,050	5,970	6,020	6,000
	Women	8,260	7,840	8,010	8,040	8,270
	All	14,560	13,890	13,980	14,060	14,270

#### S.44 Placed 18 year old applicants from Scotland by sex: 7 days after A level results day

Placed 18 year old applicants: change relative to 2013 cycle totals

Applicant Status	Sex	2010	2011	2012	2013	2014
Placed	Men	5%	0%	-1%	0%	-0%
	Women	3%	-2%	-0%	0%	3%
	All	4%	-1%	-1%	0%	2%

#### S.45 Placed 18 year old applicants from Scotland by sex: 7 days after A level results day

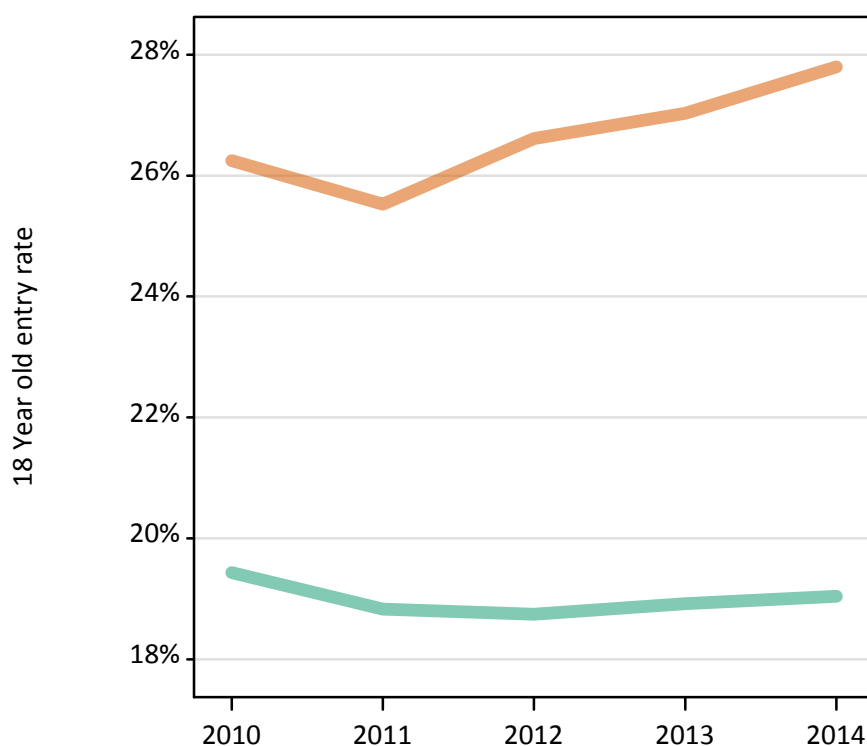
Placed 18 year old applicants: absolute change relative to 2013 cycle totals

Applicant Status	Sex	2010	2011	2012	2013	2014
Placed	Men	270	30	-60	0	-20
	Women	220	-200	-20	0	240
	All	500	-170	-80	0	210

#### S.46 Placed 18 year old applicants from Scotland by sex: 7 days after A level results day

Placed 18 year old applicants: entry rate

Men  
Women



#### S.47 Placed 18 year old applicants from Scotland by sex: 7 days after A level results day

Placed 18 year old applicants: entry rate

Applicant Status	Sex	2010	2011	2012	2013	2014
Placed	Men	19.4%	18.8%	18.7%	18.9%	19.0%
	Women	26.2%	25.5%	26.6%	27.0%	27.8%
	All	22.8%	22.1%	22.6%	22.8%	23.3%

#### S.48 Placed 18 year old applicants from Scotland by sex: 7 days after A level results day

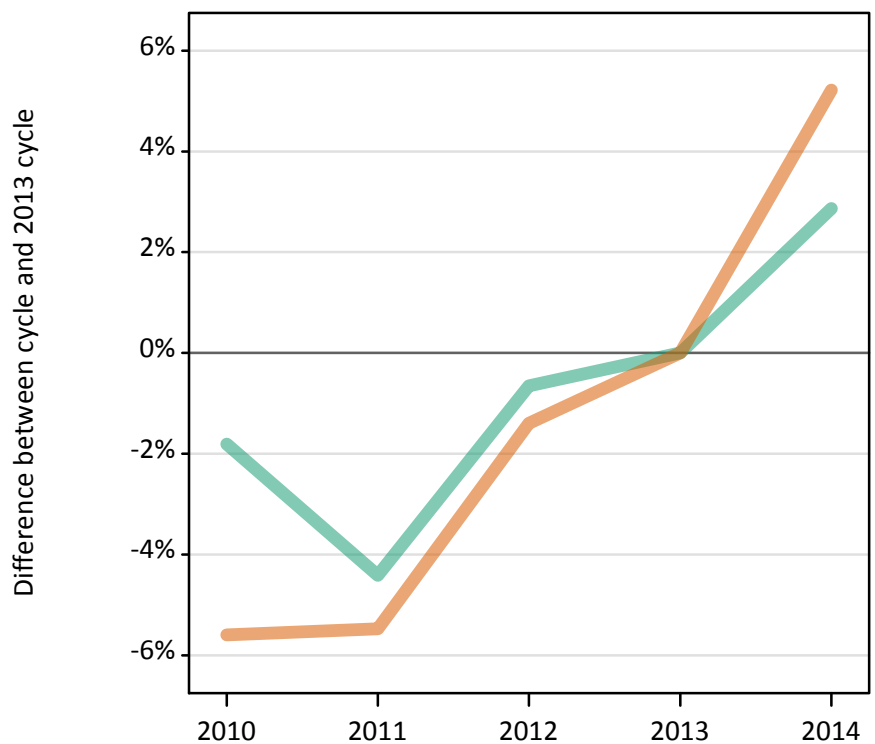
Placed 18 year old applicants: entry rate (indexed to 100 = Men)

Applicant Status	Sex	2010	2011	2012	2013	2014
Placed	Men	100	100	100	100	100
	Women	135	136	142	143	146

#### S.49 Placed applicants from Wales by sex: 7 days after A level results day

Placed applicants: change relative to 2013 cycle totals

Men  
Women



#### S.50 Placed applicants from Wales by sex: 7 days after A level results day

Applicant Status	Sex	2010	2011	2012	2013	2014
Placed	Men	7,390	7,200	7,480	7,530	7,740
	Women	9,460	9,480	9,890	10,030	10,550
	All	16,860	16,670	17,360	17,550	18,290

#### S.51 Placed applicants from Wales by sex: 7 days after A level results day

Placed applicants: change relative to 2013 cycle totals

Applicant Status	Sex	2010	2011	2012	2013	2014
Placed	Men	-2%	-4%	-1%	0%	3%
	Women	-6%	-5%	-1%	0%	5%
	All	-4%	-5%	-1%	0%	4%

#### S.52 Placed applicants from Wales by sex: 7 days after A level results day

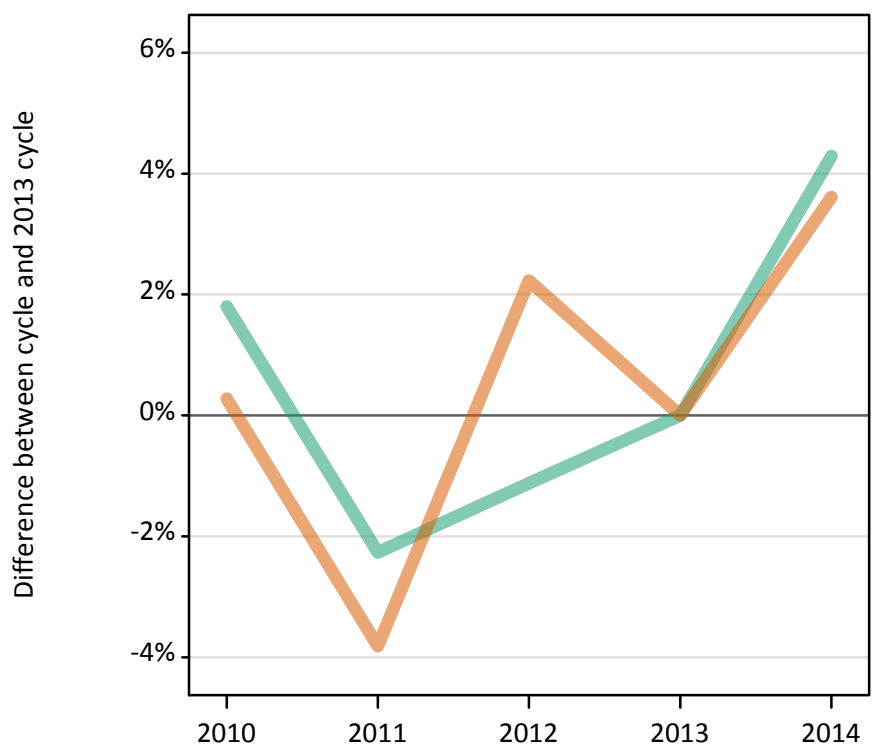
Placed applicants: absolute change relative to 2013 cycle totals

Applicant Status	Sex	2010	2011	2012	2013	2014
Placed	Men	-140	-330	-50	0	220
	Women	-560	-550	-140	0	520
	All	-700	-880	-190	0	740

### S.53 Placed 18 year old applicants from Wales by sex: 7 days after A level results day

Placed 18 year old applicants: change relative to 2013 cycle totals

Men  
Women



### S.54 Placed 18 year old applicants from Wales by sex: 7 days after A level results day

Applicant Status	Sex	2010	2011	2012	2013	2014
Placed	Men	4,180	4,010	4,060	4,110	4,280
	Women	5,440	5,220	5,540	5,420	5,620
	All	9,620	9,230	9,600	9,530	9,900

### S.55 Placed 18 year old applicants from Wales by sex: 7 days after A level results day

Placed 18 year old applicants: change relative to 2013 cycle totals

Applicant Status	Sex	2010	2011	2012	2013	2014
Placed	Men	2%	-2%	-1%	0%	4%
	Women	0%	-4%	2%	0%	4%
	All	1%	-3%	1%	0%	4%

### S.56 Placed 18 year old applicants from Wales by sex: 7 days after A level results day

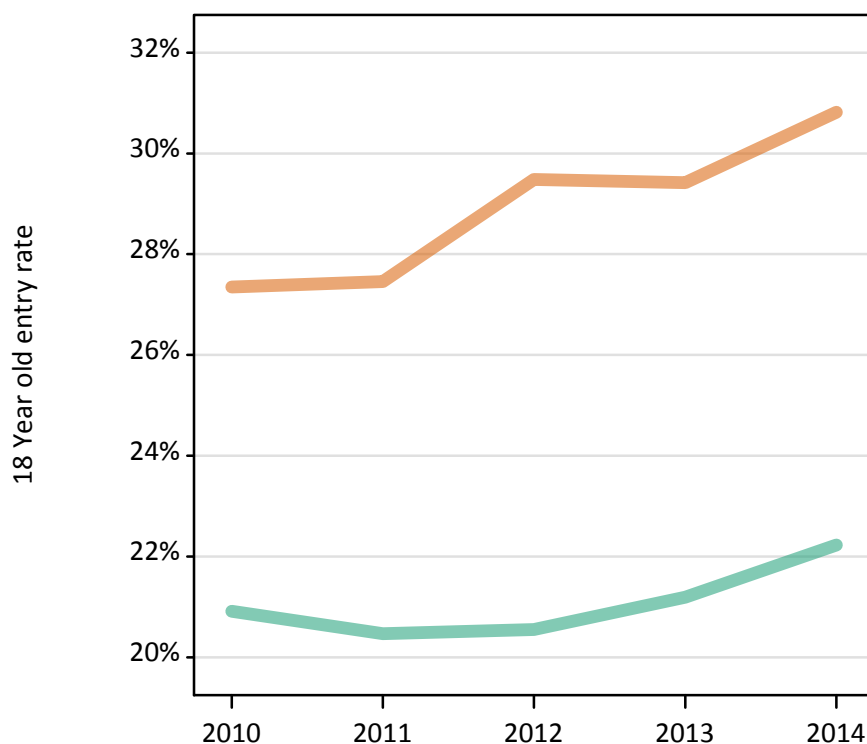
Placed 18 year old applicants: absolute change relative to 2013 cycle totals

Applicant Status	Sex	2010	2011	2012	2013	2014
Placed	Men	70	-90	-50	0	180
	Women	20	-210	120	0	200
	All	90	-300	80	0	370

### S.57 Placed 18 year old applicants from Wales by sex: 7 days after A level results day

Placed 18 year old applicants: entry rate

Men  
Women



### S.58 Placed 18 year old applicants from Wales by sex: 7 days after A level results day

Placed 18 year old applicants: entry rate

Applicant Status	Sex	2010	2011	2012	2013	2014
Placed	Men	20.9%	20.5%	20.5%	21.2%	22.2%
	Women	27.3%	27.5%	29.5%	29.4%	30.8%
	All	24.1%	23.9%	24.9%	25.2%	26.4%

### S.59 Placed 18 year old applicants from Wales by sex: 7 days after A level results day

Placed 18 year old applicants: entry rate (indexed to 100 = Men)

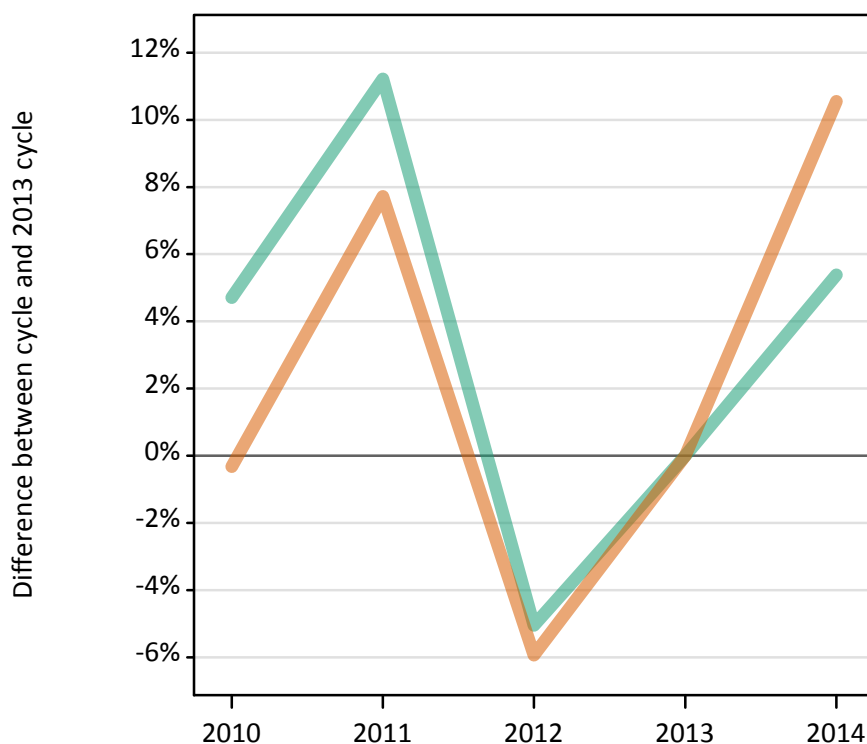
Applicant Status	Sex	2010	2011	2012	2013	2014
Placed	Men	100	100	100	100	100
	Women	131	134	143	139	139



### S.60 Placed applicants from the EU (excluding the UK) by sex: 7 days after A level results day

Placed applicants: change relative to 2013 cycle totals

Men  
Women



### S.61 Placed applicants from the EU (excluding the UK) by sex: 7 days after A level results day

Applicant Status	Sex	2010	2011	2012	2013	2014
Placed	Men	10,250	10,880	9,290	9,790	10,310
	Women	12,400	13,400	11,700	12,440	13,750
	All	22,650	24,290	20,990	22,230	24,070

### S.62 Placed applicants from the EU (excluding the UK) by sex: 7 days after A level results day

Placed applicants: change relative to 2013 cycle totals

Applicant Status	Sex	2010	2011	2012	2013	2014
Placed	Men	5%	11%	-5%	0%	5%
	Women	-0%	8%	-6%	0%	11%
	All	2%	9%	-6%	0%	8%

### S.63 Placed applicants from the EU (excluding the UK) by sex: 7 days after A level results day

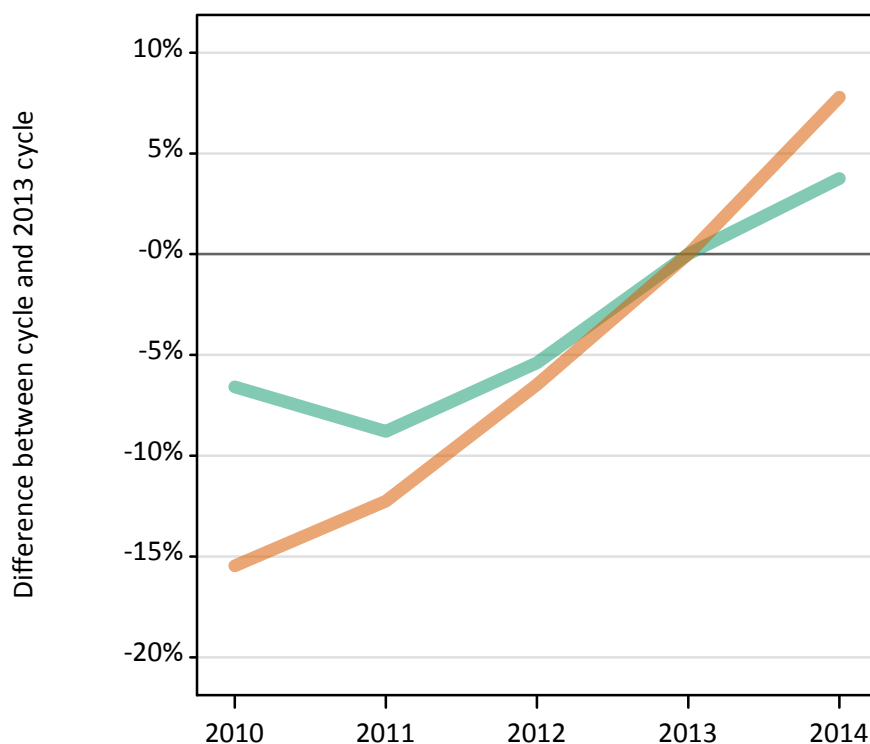
Placed applicants: absolute change relative to 2013 cycle totals

Applicant Status	Sex	2010	2011	2012	2013	2014
Placed	Men	460	1,100	-490	0	530
	Women	-40	960	-740	0	1,310
	All	420	2,060	-1,230	0	1,840

### S.64 Placed applicants from overseas (not EU) by sex: 7 days after A level results day

Placed applicants: change relative to 2013 cycle totals

Men  
Women



### S.65 Placed applicants from overseas (not EU) by sex: 7 days after A level results day

Applicant Status	Sex	2010	2011	2012	2013	2014
Placed	Men	13,330	13,020	13,500	14,270	14,810
	Women	13,330	13,830	14,740	15,760	16,990
	All	26,660	26,850	28,240	30,030	31,800

### S.66 Placed applicants from overseas (not EU) by sex: 7 days after A level results day

Placed applicants: change relative to 2013 cycle totals

Applicant Status	Sex	2010	2011	2012	2013	2014
Placed	Men	-7%	-9%	-5%	0%	4%
	Women	-15%	-12%	-6%	0%	8%
	All	-11%	-11%	-6%	0%	6%

### S.67 Placed applicants from overseas (not EU) by sex: 7 days after A level results day

Placed applicants: absolute change relative to 2013 cycle totals

Applicant Status	Sex	2010	2011	2012	2013	2014
Placed	Men	-940	-1,250	-770	0	540
	Women	-2,440	-1,930	-1,020	0	1,230
	All	-3,380	-3,190	-1,790	0	1,760