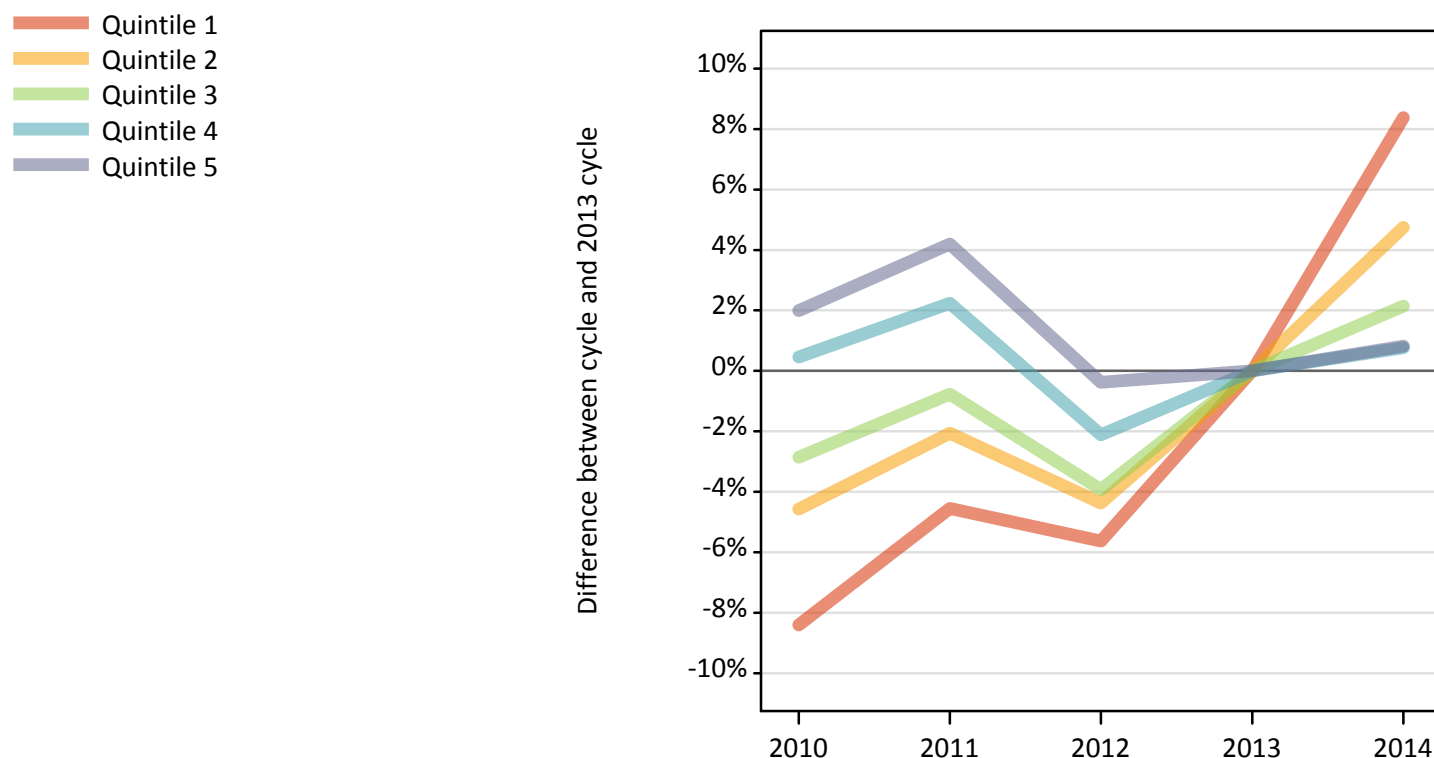


# Daily Clearing Analysis: POLAR2

**Analysis at 00:05 on Friday 22 August 2014 (8 days after A level results day)**

**P.1 Placed 18 year old applicants from England by POLAR2 quintile: 8 days after A level results day**

Placed 18 year old applicants: change relative to 2013 cycle totals



**P.2 Placed 18 year old applicants from England by POLAR2 quintile: 8 days after A level results day**

Applicant Status	POLAR2	2010	2011	2012	2013	2014
Placed	Quintile 1	18,290	19,060	18,840	19,960	21,640
	Quintile 2	26,790	27,500	26,850	28,080	29,410
	Quintile 3	33,410	34,130	33,050	34,400	35,130
	Quintile 4	42,230	42,980	41,150	42,040	42,360
	Quintile 5	53,040	54,190	51,810	52,010	52,430

**P.3 Placed 18 year old applicants from England by POLAR2 quintile: 8 days after A level results day**

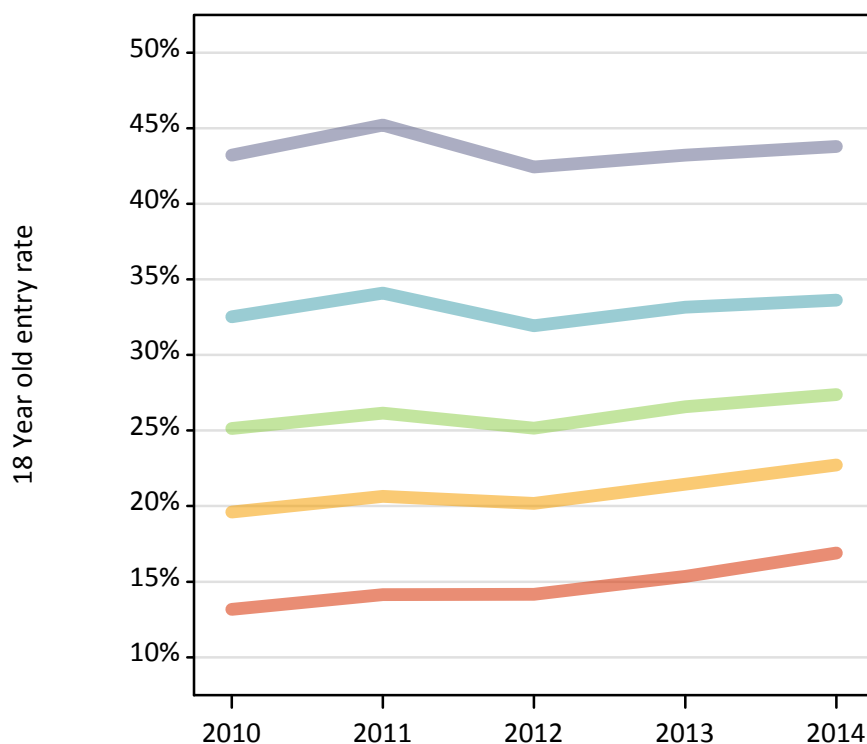
Placed 18 year old applicants: change relative to 2013 cycle totals

Applicant Status	POLAR2	2010	2011	2012	2013	2014
Placed	Quintile 1	-8%	-5%	-6%	0%	8%
	Quintile 2	-5%	-2%	-4%	0%	5%
	Quintile 3	-3%	-1%	-4%	0%	2%
	Quintile 4	0%	2%	-2%	0%	1%
	Quintile 5	2%	4%	-0%	0%	1%

#### P.4 Placed 18 year old applicants from England by POLAR2 quintile: 8 days after A level results day

Placed 18 year old applicants: entry rate

Quintile 1  
 Quintile 2  
 Quintile 3  
 Quintile 4  
 Quintile 5



#### P.5 Placed 18 year old applicants from England by POLAR2 quintile: 8 days after A level results day

Placed 18 year old applicants: entry rate

Applicant Status	POLAR2	2010	2011	2012	2013	2014
Placed	Quintile 1	13.2%	14.2%	14.2%	15.3%	16.9%
	Quintile 2	19.6%	20.6%	20.2%	21.5%	22.7%
	Quintile 3	25.1%	26.1%	25.1%	26.6%	27.4%
	Quintile 4	32.5%	34.1%	31.9%	33.2%	33.6%
	Quintile 5	43.2%	45.2%	42.4%	43.2%	43.8%

#### P.6 Placed 18 year old applicants from England by POLAR2 quintile: 8 days after A level results day

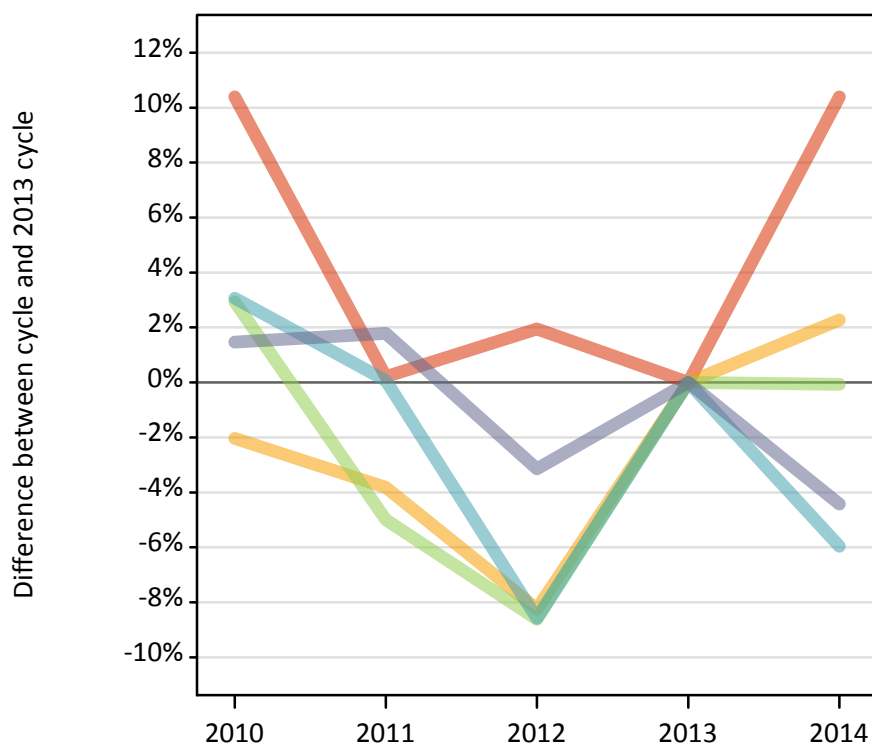
Placed 18 year old applicants: entry rate (indexed to 100 = Quintile 1)

Applicant Status	POLAR2	2010	2011	2012	2013	2014
Placed	Quintile 1	100	100	100	100	100
	Quintile 2	149	146	142	140	134
	Quintile 3	191	185	178	173	162
	Quintile 4	247	241	225	216	199
	Quintile 5	328	319	300	282	259

### P.7 Placed 18 year old applicants from Northern Ireland by POLAR2 quintile: 8 days after A level results day

Placed 18 year old applicants: change relative to 2013 cycle totals

Quintile 1  
 Quintile 2  
 Quintile 3  
 Quintile 4  
 Quintile 5



### P.8 Placed 18 year old applicants from Northern Ireland by POLAR2 quintile: 8 days after A level results day

Applicant Status	POLAR2	2010	2011	2012	2013	2014
Placed	Quintile 1	510	460	470	460	510
	Quintile 2	820	810	770	840	860
	Quintile 3	1,510	1,390	1,340	1,460	1,460
	Quintile 4	2,960	2,870	2,620	2,870	2,700
	Quintile 5	2,840	2,850	2,710	2,800	2,680

### P.9 Placed 18 year old applicants from Northern Ireland by POLAR2 quintile: 8 days after A level results day

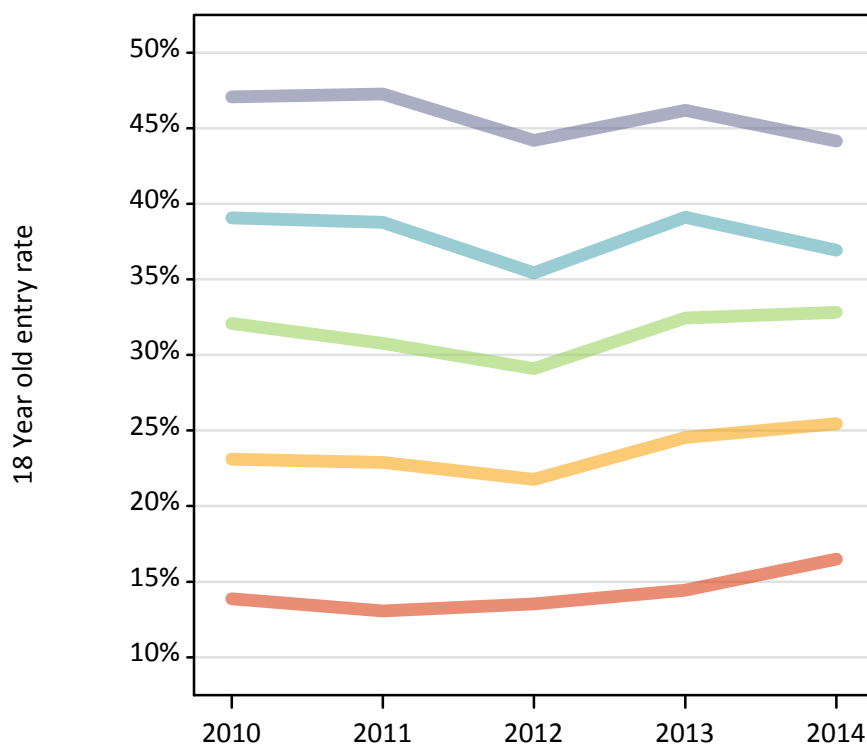
Placed 18 year old applicants: change relative to 2013 cycle totals

Applicant Status	POLAR2	2010	2011	2012	2013	2014
Placed	Quintile 1	10%	0%	2%	0%	10%
	Quintile 2	-2%	-4%	-8%	0%	2%
	Quintile 3	3%	-5%	-9%	0%	-0%
	Quintile 4	3%	0%	-9%	0%	-6%
	Quintile 5	1%	2%	-3%	0%	-4%

### P.10 Placed 18 year old applicants from Northern Ireland by POLAR2 quintile: 8 days after A level results day

Placed 18 year old applicants: entry rate

■ Quintile 1  
■ Quintile 2  
■ Quintile 3  
■ Quintile 4  
■ Quintile 5



### P.11 Placed 18 year old applicants from Northern Ireland by POLAR2 quintile: 8 days after A level results day

Placed 18 year old applicants: entry rate

Applicant Status	POLAR2	2010	2011	2012	2013	2014
Placed	Quintile 1	13.9%	13.1%	13.5%	14.4%	16.5%
	Quintile 2	23.1%	22.9%	21.8%	24.5%	25.5%
	Quintile 3	32.1%	30.8%	29.1%	32.4%	32.8%
	Quintile 4	39.1%	38.8%	35.4%	39.1%	36.9%
	Quintile 5	47.1%	47.3%	44.2%	46.2%	44.2%

### P.12 Placed 18 year old applicants from Northern Ireland by POLAR2 quintile: 8 days after A level results day

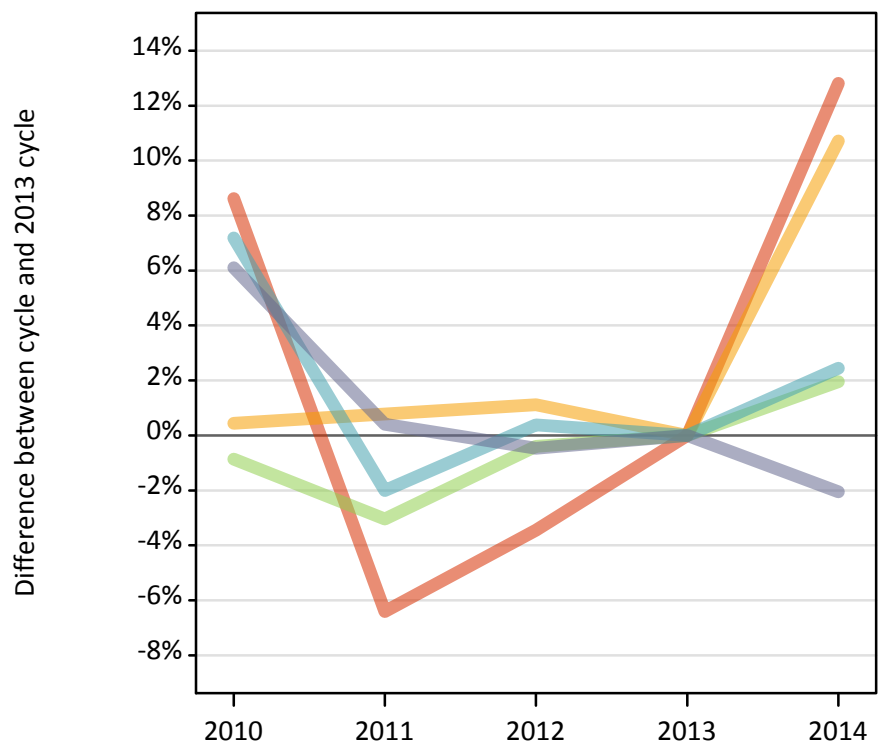
Placed 18 year old applicants: entry rate (indexed to 100 = Quintile 1)

Applicant Status	POLAR2	2010	2011	2012	2013	2014
Placed	Quintile 1	100	100	100	100	100
	Quintile 2	166	175	161	170	154
	Quintile 3	231	235	215	225	199
	Quintile 4	282	297	262	271	224
	Quintile 5	339	362	327	320	268

### P.13 Placed 18 year old applicants from Scotland by POLAR2 quintile: 8 days after A level results day

Placed 18 year old applicants: change relative to 2013 cycle totals

Quintile 1  
 Quintile 2  
 Quintile 3  
 Quintile 4  
 Quintile 5



### P.14 Placed 18 year old applicants from Scotland by POLAR2 quintile: 8 days after A level results day

Applicant Status	POLAR2	2010	2011	2012	2013	2014
Placed	Quintile 1	440	380	390	410	460
	Quintile 2	900	900	910	900	990
	Quintile 3	1,730	1,690	1,730	1,740	1,780
	Quintile 4	3,370	3,080	3,160	3,150	3,220
	Quintile 5	8,070	7,640	7,570	7,610	7,450

### P.15 Placed 18 year old applicants from Scotland by POLAR2 quintile: 8 days after A level results day

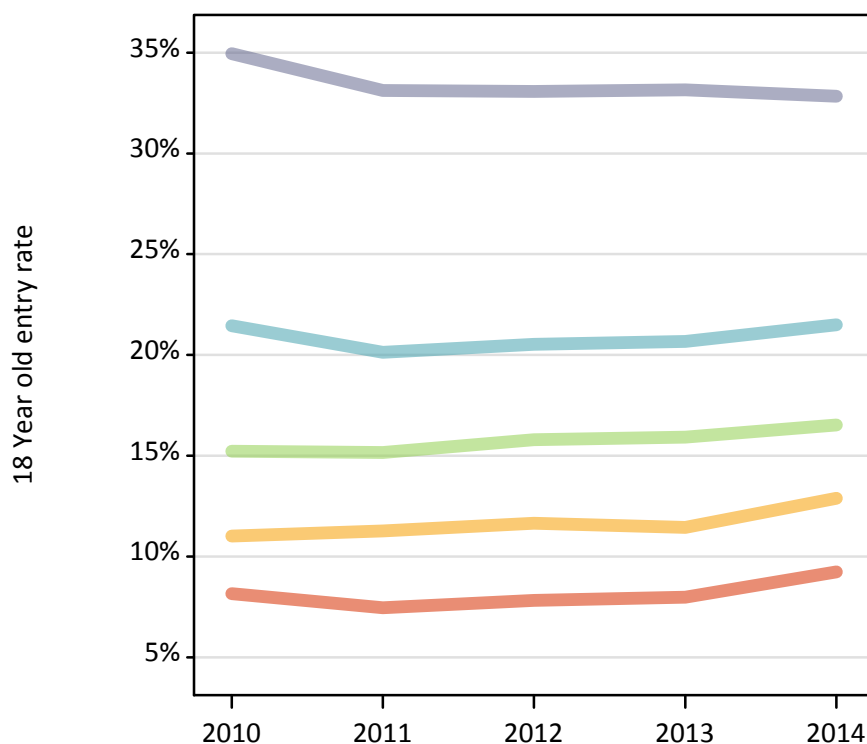
Placed 18 year old applicants: change relative to 2013 cycle totals

Applicant Status	POLAR2	2010	2011	2012	2013	2014
Placed	Quintile 1	9%	-6%	-3%	0%	13%
	Quintile 2	0%	1%	1%	0%	11%
	Quintile 3	-1%	-3%	-0%	0%	2%
	Quintile 4	7%	-2%	0%	0%	2%
	Quintile 5	6%	0%	-0%	0%	-2%

### P.16 Placed 18 year old applicants from Scotland by POLAR2 quintile: 8 days after A level results day

Placed 18 year old applicants: entry rate

— Quintile 1  
— Quintile 2  
— Quintile 3  
— Quintile 4  
— Quintile 5



### P.17 Placed 18 year old applicants from Scotland by POLAR2 quintile: 8 days after A level results day

Placed 18 year old applicants: entry rate

Applicant Status	POLAR2	2010	2011	2012	2013	2014
Placed	Quintile 1	8.2%	7.5%	7.8%	8.0%	9.2%
	Quintile 2	11.0%	11.3%	11.6%	11.5%	12.9%
	Quintile 3	15.2%	15.2%	15.8%	15.9%	16.5%
	Quintile 4	21.5%	20.1%	20.5%	20.7%	21.5%
	Quintile 5	34.9%	33.1%	33.1%	33.2%	32.8%

### P.18 Placed 18 year old applicants from Scotland by POLAR2 quintile: 8 days after A level results day

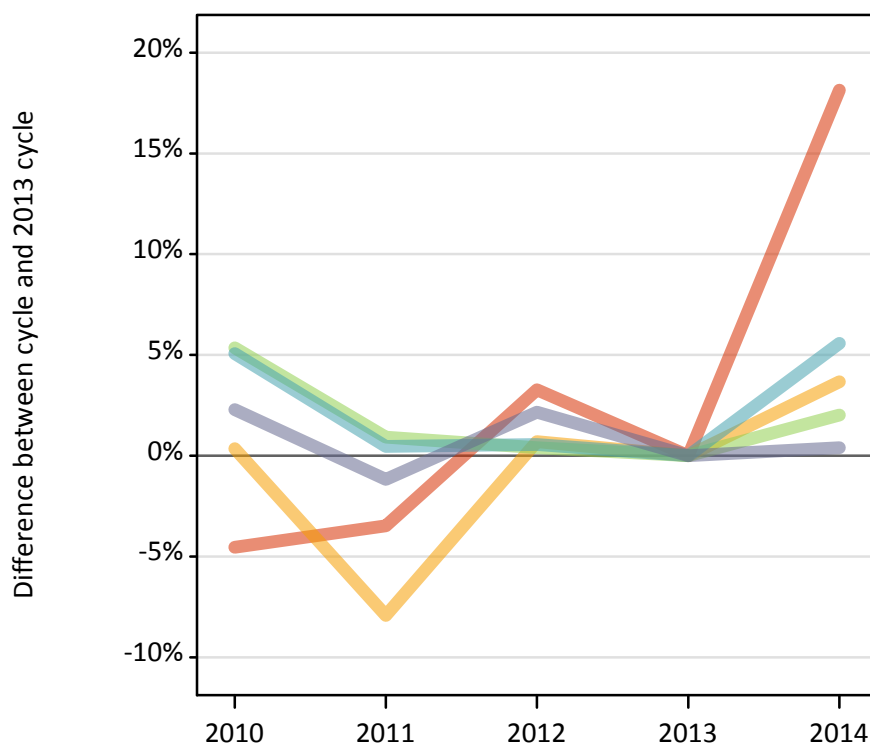
Placed 18 year old applicants: entry rate (indexed to 100 = Quintile 1)

Applicant Status	POLAR2	2010	2011	2012	2013	2014
Placed	Quintile 1	100	100	100	100	100
	Quintile 2	135	151	149	144	140
	Quintile 3	187	203	202	200	179
	Quintile 4	263	270	262	259	233
	Quintile 5	429	444	423	416	356

### P.19 Placed 18 year old applicants from Wales by POLAR2 quintile: 8 days after A level results day

Placed 18 year old applicants: change relative to 2013 cycle totals

Quintile 1  
 Quintile 2  
 Quintile 3  
 Quintile 4  
 Quintile 5



### P.20 Placed 18 year old applicants from Wales by POLAR2 quintile: 8 days after A level results day

Applicant Status	POLAR2	2010	2011	2012	2013	2014
Placed	Quintile 1	910	920	980	950	1,120
	Quintile 2	1,720	1,580	1,730	1,720	1,780
	Quintile 3	1,830	1,760	1,750	1,740	1,770
	Quintile 4	2,060	1,970	1,970	1,960	2,070
	Quintile 5	3,130	3,020	3,130	3,060	3,070

### P.21 Placed 18 year old applicants from Wales by POLAR2 quintile: 8 days after A level results day

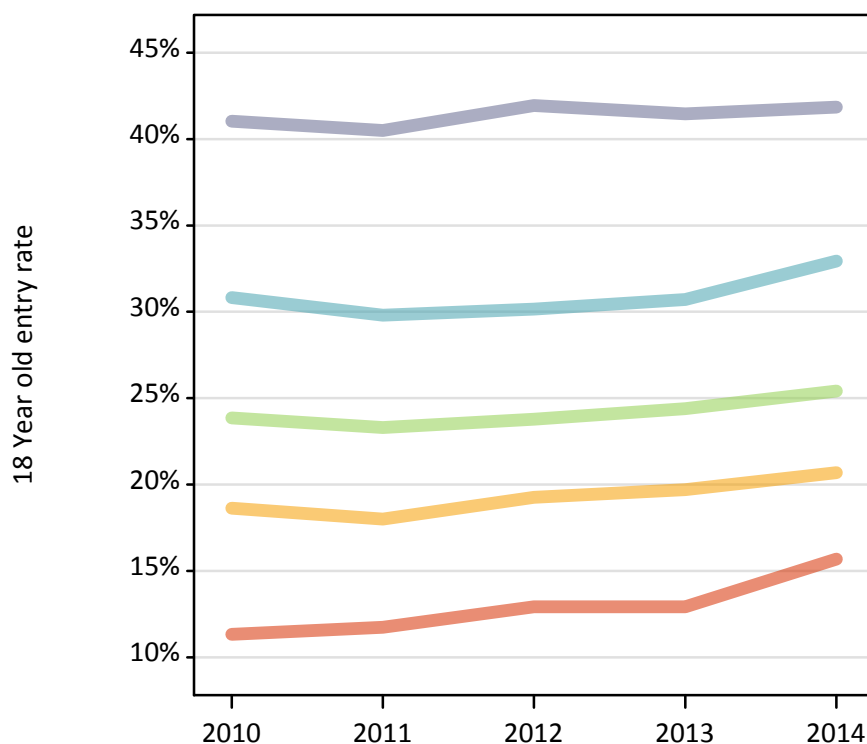
Placed 18 year old applicants: change relative to 2013 cycle totals

Applicant Status	POLAR2	2010	2011	2012	2013	2014
Placed	Quintile 1	-5%	-3%	3%	0%	18%
	Quintile 2	0%	-8%	1%	0%	4%
	Quintile 3	5%	1%	0%	0%	2%
	Quintile 4	5%	0%	1%	0%	6%
	Quintile 5	2%	-1%	2%	0%	0%

## P.22 Placed 18 year old applicants from Wales by POLAR2 quintile: 8 days after A level results day

Placed 18 year old applicants: entry rate

■ Quintile 1  
■ Quintile 2  
■ Quintile 3  
■ Quintile 4  
■ Quintile 5



## P.23 Placed 18 year old applicants from Wales by POLAR2 quintile: 8 days after A level results day

Placed 18 year old applicants: entry rate

Applicant Status	POLAR2	2010	2011	2012	2013	2014
Placed	Quintile 1	11.3%	11.7%	12.9%	12.9%	15.7%
	Quintile 2	18.6%	18.0%	19.3%	19.7%	20.7%
	Quintile 3	23.9%	23.3%	23.8%	24.4%	25.4%
	Quintile 4	30.8%	29.8%	30.2%	30.7%	32.9%
	Quintile 5	41.0%	40.5%	41.9%	41.5%	41.9%

## P.24 Placed 18 year old applicants from Wales by POLAR2 quintile: 8 days after A level results day

Placed 18 year old applicants: entry rate (indexed to 100 = Quintile 1)

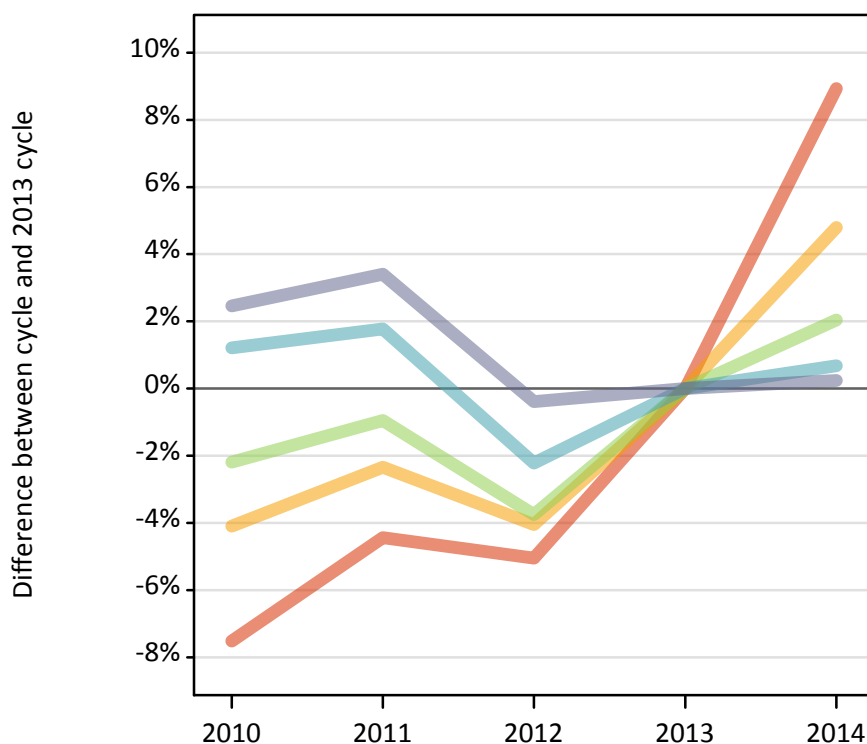
Applicant Status	POLAR2	2010	2011	2012	2013	2014
Placed	Quintile 1	100	100	100	100	100
	Quintile 2	165	153	149	152	132
	Quintile 3	211	198	184	189	162
	Quintile 4	272	254	233	238	210
	Quintile 5	362	345	324	321	267



### P.25 Placed 18 year old applicants from the UK by POLAR2 quintile: 8 days after A level results day

Placed 18 year old applicants: change relative to 2013 cycle totals

— Quintile 1  
— Quintile 2  
— Quintile 3  
— Quintile 4  
— Quintile 5



### P.26 Placed 18 year old applicants from the UK by POLAR2 quintile: 8 days after A level results day

Applicant Status	POLAR2	2010	2011	2012	2013	2014
Placed	Quintile 1	20,140	20,810	20,680	21,780	23,720
	Quintile 2	30,240	30,790	30,250	31,530	33,040
	Quintile 3	38,480	38,970	37,860	39,340	40,140
	Quintile 4	50,610	50,900	48,900	50,010	50,350
	Quintile 5	67,080	67,700	65,220	65,470	65,630

### P.27 Placed 18 year old applicants from the UK by POLAR2 quintile: 8 days after A level results day

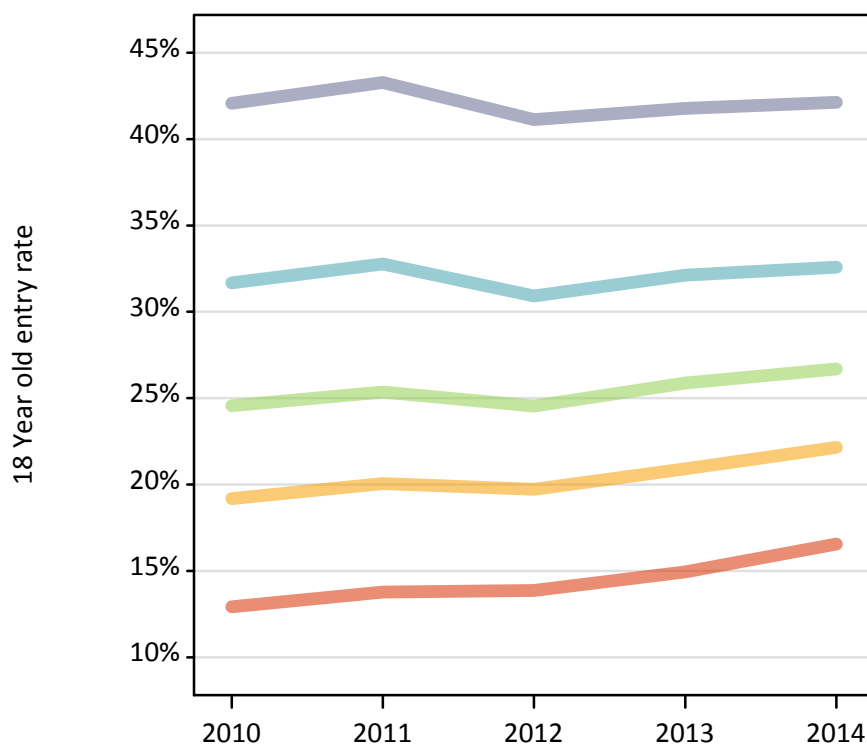
Placed 18 year old applicants: change relative to 2013 cycle totals

Applicant Status	POLAR2	2010	2011	2012	2013	2014
Placed	Quintile 1	-8%	-4%	-5%	0%	9%
	Quintile 2	-4%	-2%	-4%	0%	5%
	Quintile 3	-2%	-1%	-4%	0%	2%
	Quintile 4	1%	2%	-2%	0%	1%
	Quintile 5	2%	3%	-0%	0%	0%

### P.28 Placed 18 year old applicants from the UK by POLAR2 quintile: 8 days after A level results day

Placed 18 year old applicants: entry rate

Quintile 1  
 Quintile 2  
 Quintile 3  
 Quintile 4  
 Quintile 5



### P.29 Placed 18 year old applicants from the UK by POLAR2 quintile: 8 days after A level results day

Placed 18 year old applicants: entry rate

Applicant Status	POLAR2	2010	2011	2012	2013	2014
Placed	Quintile 1	12.9%	13.8%	13.9%	14.9%	16.6%
	Quintile 2	19.2%	20.1%	19.7%	20.9%	22.1%
	Quintile 3	24.6%	25.3%	24.5%	25.9%	26.7%
	Quintile 4	31.7%	32.8%	30.9%	32.1%	32.6%
	Quintile 5	42.1%	43.3%	41.1%	41.8%	42.1%

### P.30 Placed 18 year old applicants from the UK by POLAR2 quintile: 8 days after A level results day

Placed 18 year old applicants: entry rate (indexed to 100 = Quintile 1)

Applicant Status	POLAR2	2010	2011	2012	2013	2014
Placed	Quintile 1	100	100	100	100	100
	Quintile 2	148	146	142	140	134
	Quintile 3	190	184	177	173	161
	Quintile 4	245	238	223	215	197
	Quintile 5	326	314	296	280	254