

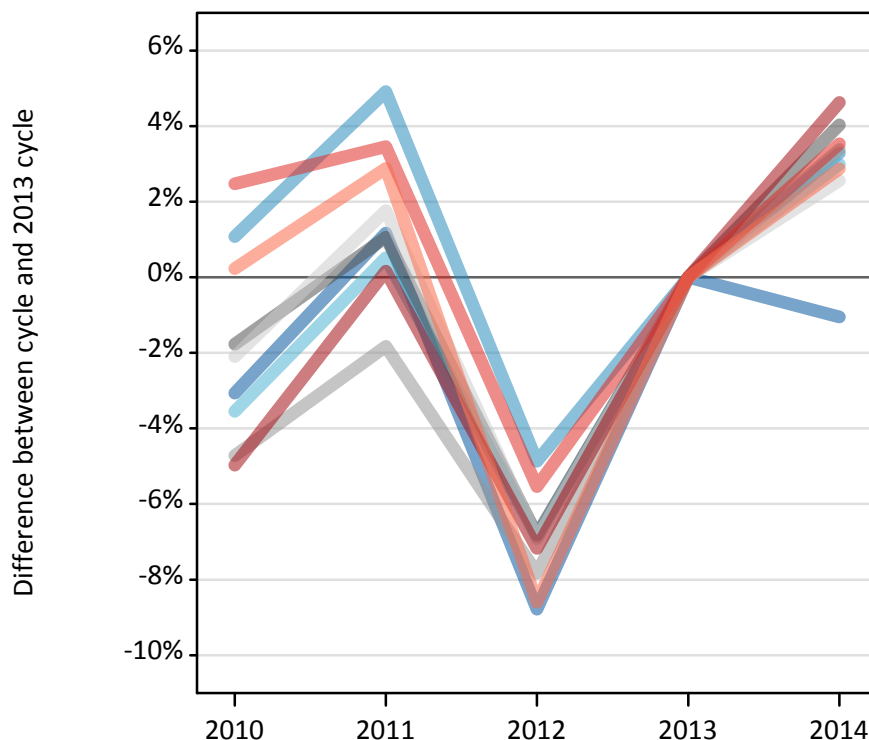
Daily Clearing Analysis: Region

Analysis at 00:05 on Friday 22 August 2014 (8 days after A level results day)

R.1 Placed applicants by region of domicile: 8 days after A level results day

Placed applicants: change relative to 2013 cycle totals

North East
 North West
 Yorkshire and The Humber
 East Midlands
 West Midlands
 East of England
 London
 South East
 South West



R.2 Placed applicants by region of domicile: 8 days after A level results day

Applicant Status	Domicile	2010	2011	2012	2013	2014
Placed	North East	14,660	15,300	13,800	15,130	14,970
	North West	46,100	47,850	43,390	45,610	47,110
	Yorkshire and The Humber	30,170	31,440	29,140	31,280	32,210
	East Midlands	25,830	26,580	24,510	26,300	27,360
	West Midlands	34,260	35,300	33,140	35,950	37,170
	East of England	34,390	35,750	32,700	35,130	36,030
	London	58,040	61,180	56,700	61,080	63,900
	South East	55,510	56,040	51,170	54,170	56,080
	South West	31,290	32,110	28,530	31,220	32,110
	(England total)	330,250	341,550	313,060	335,850	346,940
	Scotland	28,130	27,610	27,580	28,090	28,910
	Northern Ireland	13,110	13,300	12,350	13,700	13,750
	Wales	17,070	16,870	17,520	17,700	18,440
	UK	388,560	399,320	370,520	395,350	408,040

R.3 Placed applicants by region of domicile: 8 days after A level results day

Placed applicants: change relative to 2013 cycle totals

Applicant Status	Domicile	2010	2011	2012	2013	2014
Placed	North East	-3%	1%	-9%	0%	-1%
	North West	1%	5%	-5%	0%	3%
	Yorkshire and The Humber	-4%	1%	-7%	0%	3%
	East Midlands	-2%	1%	-7%	0%	4%
	West Midlands	-5%	-2%	-8%	0%	3%
	East of England	-2%	2%	-7%	0%	3%
	London	-5%	0%	-7%	0%	5%
	South East	2%	3%	-6%	0%	4%
	South West	0%	3%	-9%	0%	3%
	(England total)	-2%	2%	-7%	0%	3%
	Scotland	0%	-2%	-2%	0%	3%
	Northern Ireland	-4%	-3%	-10%	0%	0%
	Wales	-4%	-5%	-1%	0%	4%
	UK	-2%	1%	-6%	0%	3%

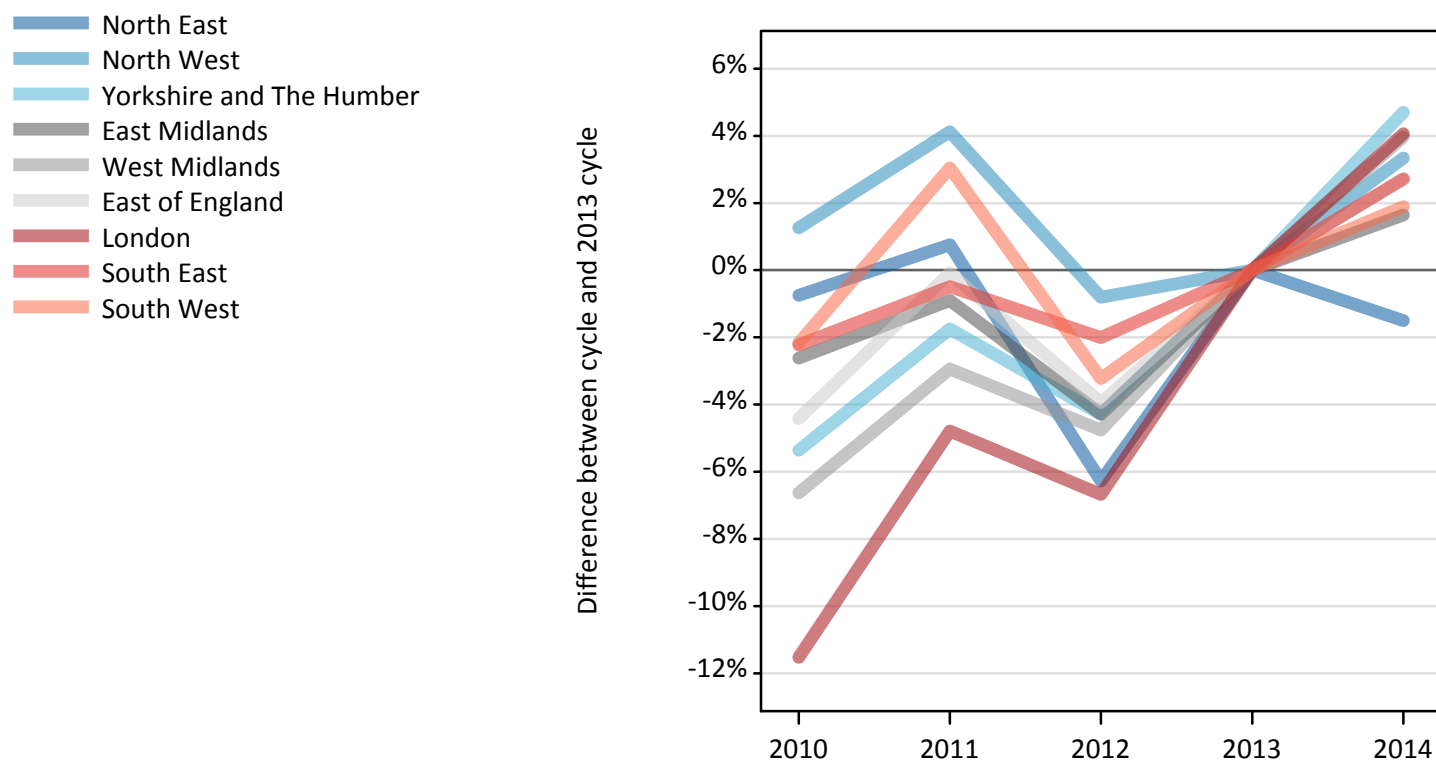
R.4 Placed applicants by region of domicile: 8 days after A level results day

Placed applicants: absolute change relative to 2013 cycle totals

Applicant Status	Domicile	2010	2011	2012	2013	2014
Placed	North East	-460	180	-1,330	0	-160
	North West	490	2,240	-2,220	0	1,500
	Yorkshire and The Humber	-1,110	160	-2,140	0	940
	East Midlands	-470	280	-1,790	0	1,060
	West Midlands	-1,700	-660	-2,810	0	1,220
	East of England	-740	620	-2,430	0	900
	London	-3,040	100	-4,380	0	2,820
	South East	1,340	1,870	-3,000	0	1,920
	South West	70	900	-2,680	0	900
	(England total)	-5,610	5,690	-22,790	0	11,090
	Scotland	40	-480	-510	0	820
	Northern Ireland	-590	-410	-1,350	0	50
	Wales	-630	-830	-180	0	740
	UK	-6,790	3,980	-24,830	0	12,690

R.5 Placed 18 year old applicants by region of domicile: 8 days after A level results day

Placed 18 year old applicants: change relative to 2013 cycle totals



R.6 Placed 18 year old applicants by region of domicile: 8 days after A level results day

Applicant Status	Domicile	2010	2011	2012	2013	2014
Placed	North East	7,940	8,060	7,500	8,000	7,880
	North West	25,530	26,250	25,010	25,210	26,050
	Yorkshire and The Humber	16,230	16,850	16,420	17,150	17,960
	East Midlands	14,380	14,630	14,130	14,760	15,000
	West Midlands	18,080	18,790	18,440	19,360	20,130
	East of England	19,860	20,770	19,960	20,780	21,350
	London	27,470	29,560	28,970	31,040	32,310
	South East	30,430	30,970	30,500	31,120	31,970
	South West	15,540	16,360	15,370	15,880	16,180
	(England total)	175,450	182,240	176,290	183,310	188,830
	Scotland	14,600	13,910	14,000	14,080	14,290
	Northern Ireland	8,670	8,470	7,990	8,540	8,340
	Wales	9,700	9,320	9,650	9,570	9,950
	UK	208,420	213,930	207,930	215,510	221,410

R.7 Placed 18 year old applicants by region of domicile: 8 days after A level results day

Placed 18 year old applicants: change relative to 2013 cycle totals

Applicant Status	Domicile	2010	2011	2012	2013	2014
Placed	North East	-1%	1%	-6%	0%	-1%
	North West	1%	4%	-1%	0%	3%
	Yorkshire and The Humber	-5%	-2%	-4%	0%	5%
	East Midlands	-3%	-1%	-4%	0%	2%
	West Midlands	-7%	-3%	-5%	0%	4%
	East of England	-4%	-0%	-4%	0%	3%
	London	-12%	-5%	-7%	0%	4%
	South East	-2%	-0%	-2%	0%	3%
	South West	-2%	3%	-3%	0%	2%
	(England total)	-4%	-1%	-4%	0%	3%
	Scotland	4%	-1%	-1%	0%	1%
	Northern Ireland	1%	-1%	-6%	0%	-2%
	Wales	1%	-3%	1%	0%	4%
	UK	-3%	-1%	-4%	0%	3%

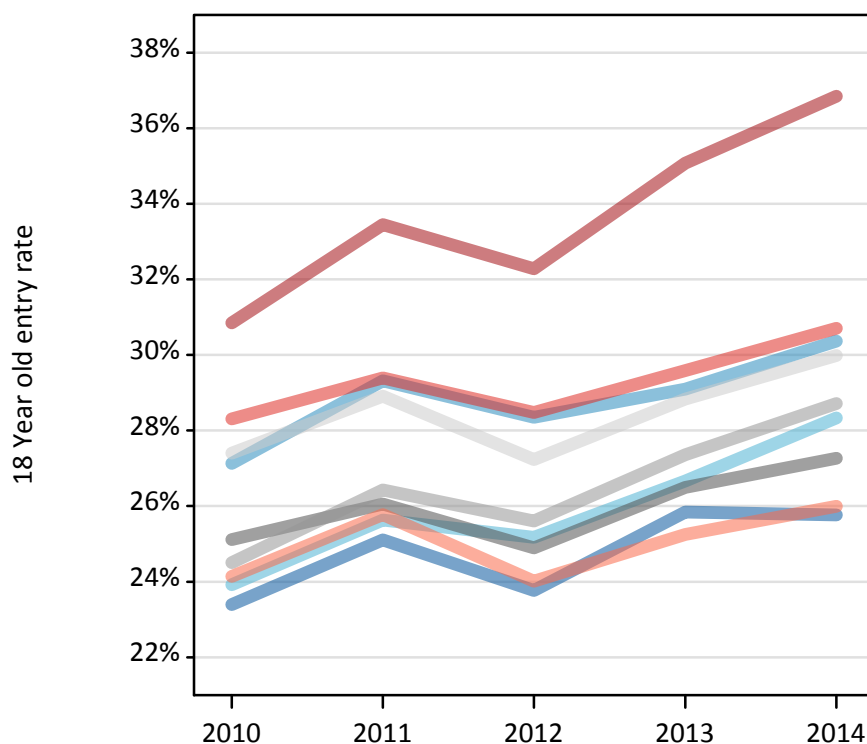
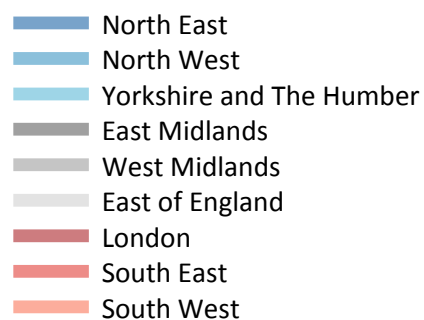
R.8 Placed 18 year old applicants by region of domicile: 8 days after A level results day

Placed 18 year old applicants: absolute change relative to 2013 cycle totals

Applicant Status	Domicile	2010	2011	2012	2013	2014
Placed	North East	-60	60	-500	0	-120
	North West	320	1,040	-200	0	840
	Yorkshire and The Humber	-920	-300	-740	0	810
	East Midlands	-390	-130	-630	0	240
	West Midlands	-1,280	-570	-920	0	770
	East of England	-920	-20	-820	0	560
	London	-3,580	-1,490	-2,070	0	1,260
	South East	-690	-150	-620	0	850
	South West	-340	480	-510	0	300
	(England total)	-7,860	-1,080	-7,020	0	5,520
	Scotland	520	-180	-80	0	210
	Northern Ireland	130	-80	-550	0	-200
	Wales	130	-250	80	0	380
	UK	-7,090	-1,580	-7,580	0	5,900

R.9 Placed 18 year old applicants by region of domicile: 8 days after A level results day

Placed 18 year old applicants: entry rate



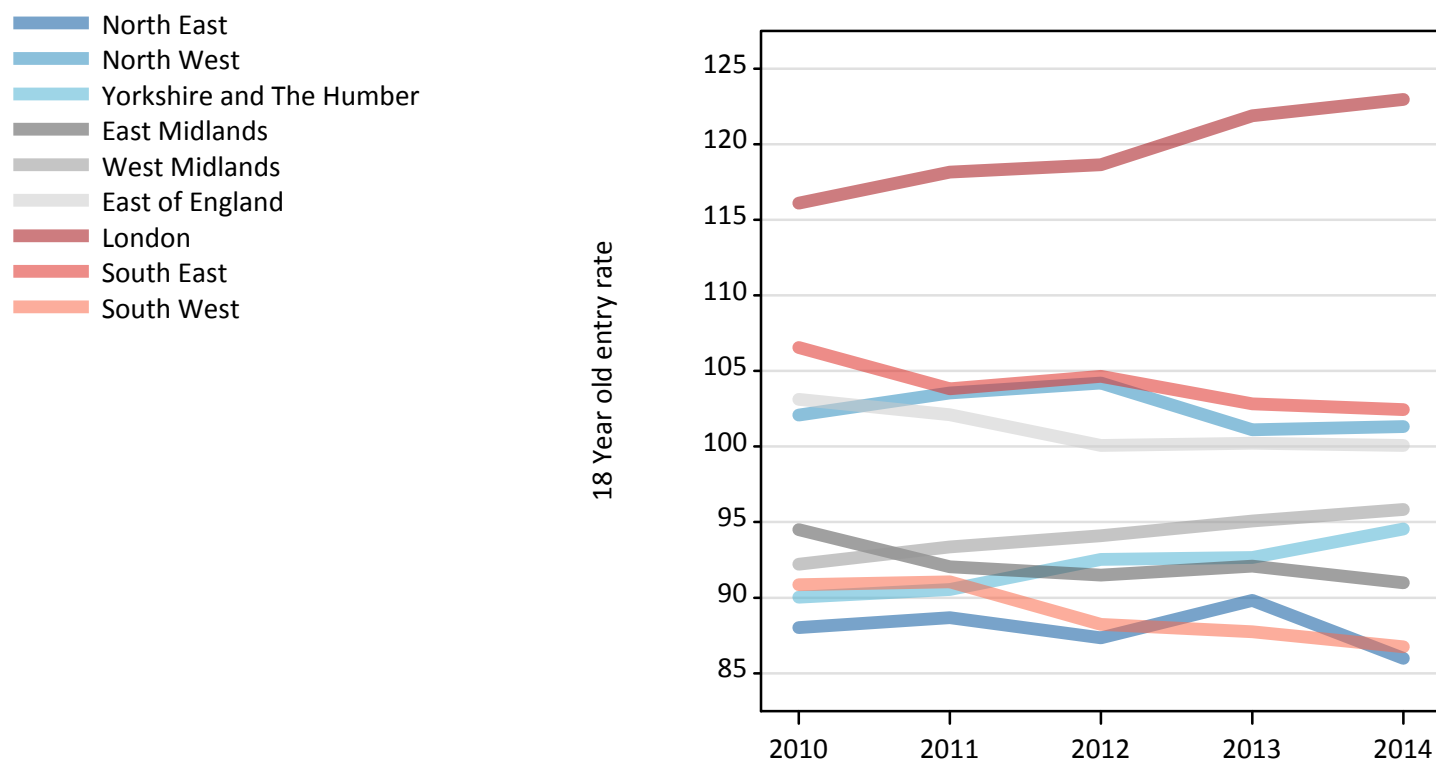
R.10 Placed 18 year old applicants by region of domicile: 8 days after A level results day

Placed 18 year old applicants: entry rate

Applicant Status	Domicile	2010	2011	2012	2013	2014
Placed	North East	23.4%	25.1%	23.8%	25.8%	25.8%
	North West	27.1%	29.3%	28.4%	29.1%	30.4%
	Yorkshire and The Humber	23.9%	25.6%	25.2%	26.7%	28.3%
	East Midlands	25.1%	26.1%	24.9%	26.5%	27.3%
	West Midlands	24.5%	26.4%	25.6%	27.4%	28.7%
	East of England	27.4%	28.9%	27.2%	28.8%	30.0%
	London	30.9%	33.5%	32.3%	35.1%	36.8%
	South East	28.3%	29.4%	28.5%	29.6%	30.7%
	South West	24.1%	25.8%	24.0%	25.2%	26.0%
	(England total)	26.6%	28.3%	27.2%	28.8%	30.0%
	Scotland	22.9%	22.1%	22.6%	22.9%	23.3%
	Northern Ireland	34.0%	33.9%	31.8%	34.8%	34.4%
	Wales	24.3%	24.2%	25.0%	25.3%	26.5%
	UK	26.4%	27.8%	26.9%	28.3%	29.4%

R.11 Placed 18 year old applicants by region of domicile: 8 days after A level results day

Placed 18 year old applicants: entry rates (indexed to 100 = England)



R.12 Placed 18 year old applicants by region of domicile: 8 days after A level results day

Placed 18 year old applicants: entry rate (indexed to 100 = England)

Applicant Status	Domicile	2010	2011	2012	2013	2014
Placed	North East	88	89	87	90	86
	North West	102	104	104	101	101
	Yorkshire and The Humber	90	91	93	93	95
	East Midlands	94	92	91	92	91
	West Midlands	92	93	94	95	96
	East of England	103	102	100	100	100
	London	116	118	119	122	123
	South East	107	104	105	103	102
	South West	91	91	88	88	87
	(England total)	100	100	100	100	100